

Draft EIS/EIR Public Hearing

Newhall Ranch Resource Management & Development Plan and Spineflower Conservation Plan

June 11, 2009



Project Background

- ◆ **Newhall Ranch Specific Plan approved by Los Angeles County in 2003**
- ◆ **Conditions of approval and mitigation program required Newhall Land & Farming (Applicant) to obtain certain federal and State permits for jurisdictional resources**
- ◆ **Applicant submitted applications for federal (Corps) and State (CDFG) jurisdictional permits**
- ◆ **Decision made by the Corps of Engineers and CDFG to prepare a joint EIS/EIR**



Major Project Milestones

Milestone	Date
LA County certifies additional CEQA analysis and approves NRSP	May 27, 2003
Revised Notice of Preparation released (Original NOP in Jan. 2000)	Feb. 2, 2004
Second revised Notice of Preparation released	July 25, 2005
Draft EIS/EIR released for public review	April 27, 2009
Draft EIS/EIR Public Hearing	June 11, 2009
Close of Draft EIS/EIR public review period	June 26, 2009



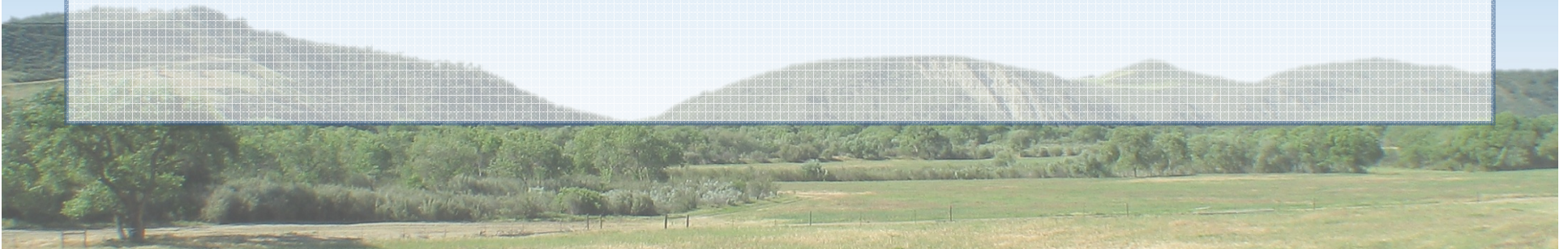
Overview of the Newhall Ranch Specific Plan

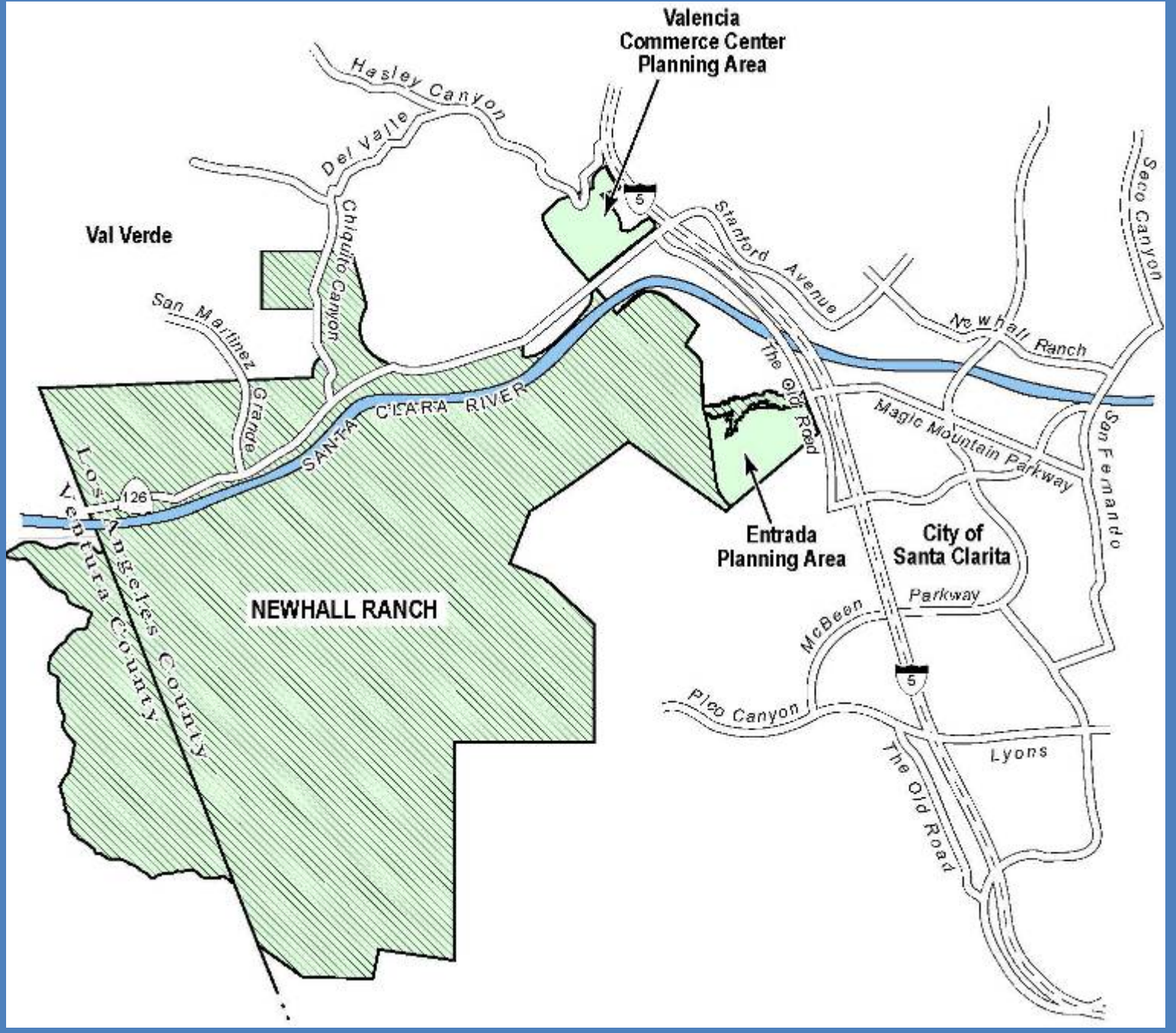
- ◆ **The Newhall Ranch Specific Plan encompasses about 12,000 acres along the Santa Clara River from I-5 to the Los Angeles and Ventura County border**
- ◆ **Master-planned community with residential, mixed-use, & non-residential land uses developed within village areas**
 - 20,885 dwelling units
 - 629 acres of mixed-use development
 - 67 acres of commercial uses
 - 249 acres of business park land uses
 - 37 acres of visitor-serving uses
 - 1,010 acres of parks and natural open space
 - 5,160 acres of special management areas



Primary Project Components

- ◆ **Two primary conservation planning documents prepared by the Applicant to facilitate agency review and permit issuance**
 - Proposed Resource Management and Development Plan (RMDP)
 - Proposed Spineflower Conservation Plan (SCP)
- ◆ **These documents are the primary focus of analysis in the EIS/EIR**





Resource Management and Development Plan

- ◆ **The RMDP is a conservation, mitigation, and permitting plan to manage sensitive biological resources within the Specific Plan area**
- ◆ **The RMDP includes development-related infrastructure in the Santa Clara River and tributary drainages**
- ◆ **Other elements of the RMDP include:**
 - Maintenance Activities
 - Environmental Protection Design Features
 - Design Considerations and Resource Protection Methods
 - Mitigation and Management Activities; and
 - Monitoring and Adaptive Management



Proposed RMDP Infrastructure

- **Bridges and Road Crossing Culverts**
- **Bank Stabilization**
- **Drainage Facilities**
- **Water Quality Control Facilities**
- **Utility Corridor and Crossings**
- **Temporary Haul Routes**
- **Recreation Facilities and Trails**
- **Tributary Drainages**
 - Stabilized Channels
 - Re-graded Channels
 - Preserved Drainages
 - Buried Storm Drains
- **WRP Outfall Construction**
- **Roadway Improvements to SR-126**
- **Maintenance Activities**
- **Geotechnical Investigation Activities**

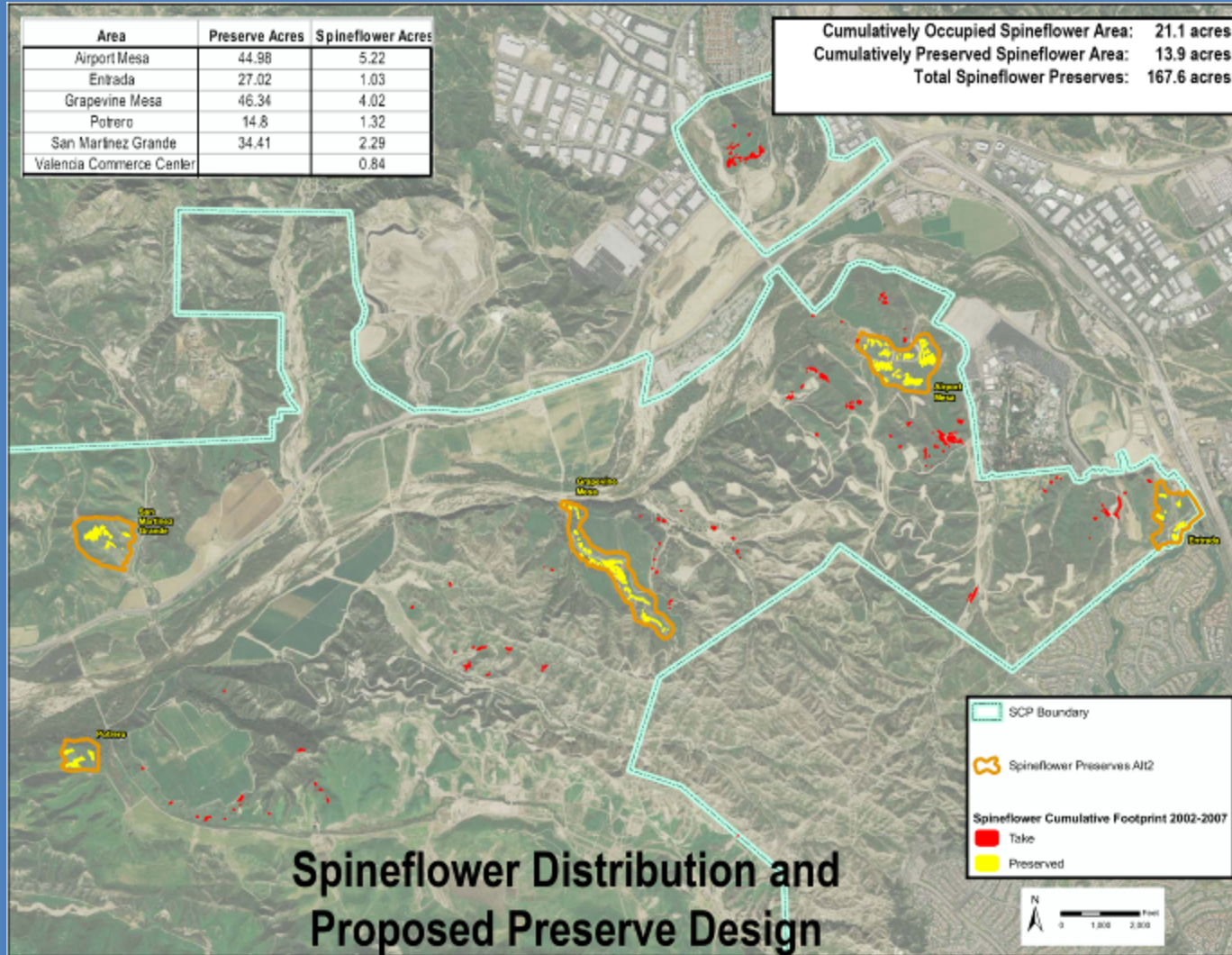


Spineflower Conservation Plan

- ◆ A plan for conservation and management of the San Fernando Valley spineflower on the Applicant's landholdings
- ◆ Establishes a system of spineflower preserves on the Applicant's landholdings
- ◆ Sets forth preserve management activities, an adaptive management program, monitoring activities, and provisions for seed bank conservation, seed collection, and preserve enhancement
- ◆ The SCP planning area includes Newhall Ranch and adjacent areas in portions of the Valencia Commerce Center (VCC) and Entrada

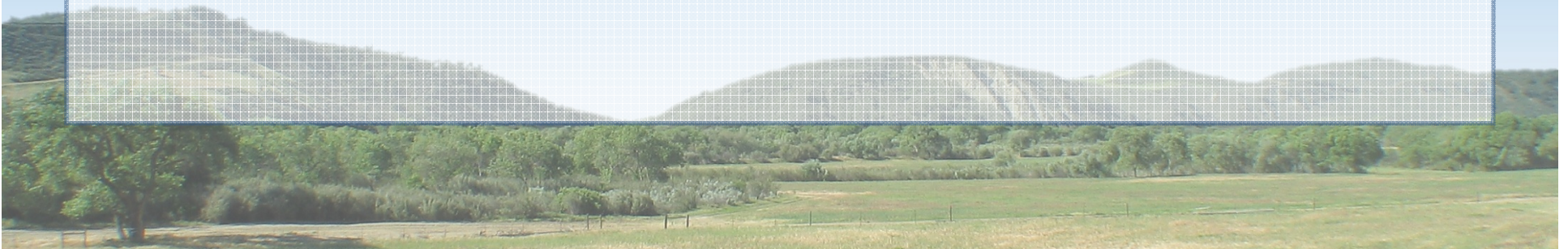


Applicant's Proposed Spineflower Preserves (Alt. 2)



Entrada and Valencia Commerce Center

- ◆ These areas are located outside the Newhall Ranch Specific Plan boundaries
- ◆ They are included in the planning area for the SCP – They are not part of the RMDP planning area
- ◆ Entrada is a proposed residential and commercial development south of Magic Mountain Parkway. Tentative tract maps have been filed with LA County but no land use approval has been granted
- ◆ Valencia Commerce Center is an approved (1990) business park project that is already largely developed



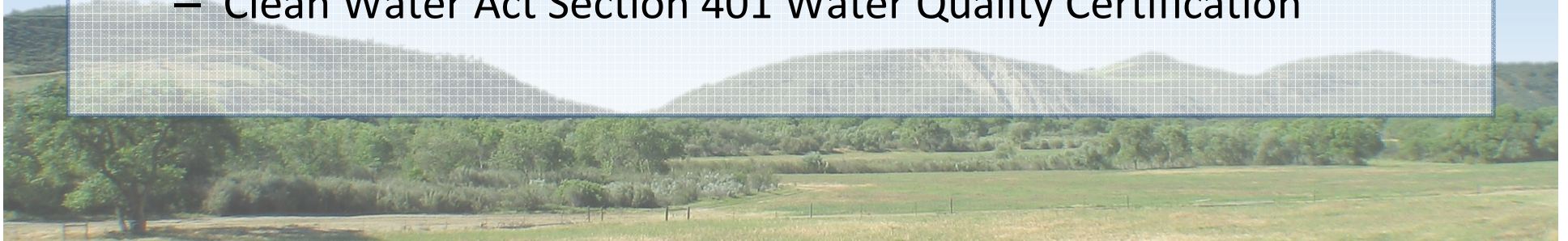
Project Objectives

- ◆ **Implement the approved Newhall Ranch Specific Plan, including development of needed infrastructure**
- ◆ **Provide long-term management of sensitive biological resources within the Specific Plan area**
- ◆ **Implement a plan to protect and manage a system of preserves to maximize the long-term persistence of spineflower on the Applicant's lands**



Requested Approvals

- ◆ **US Army Corps of Engineers**
 - Clean Water Act Section 404 Permit
- ◆ **California Department of Fish and Game**
 - Master Streambed Alteration Agreement
 - Section 2081(b) Incidental Take Permits pursuant to the California Endangered Species Act
- ◆ **US Fish and Wildlife Service**
 - Candidate Conservation Agreement
 - Incidental Take Statement pursuant to Section 7 of the federal Endangered Species Act
- ◆ **State Water Resources Control Board**
 - Clean Water Act Section 401 Water Quality Certification

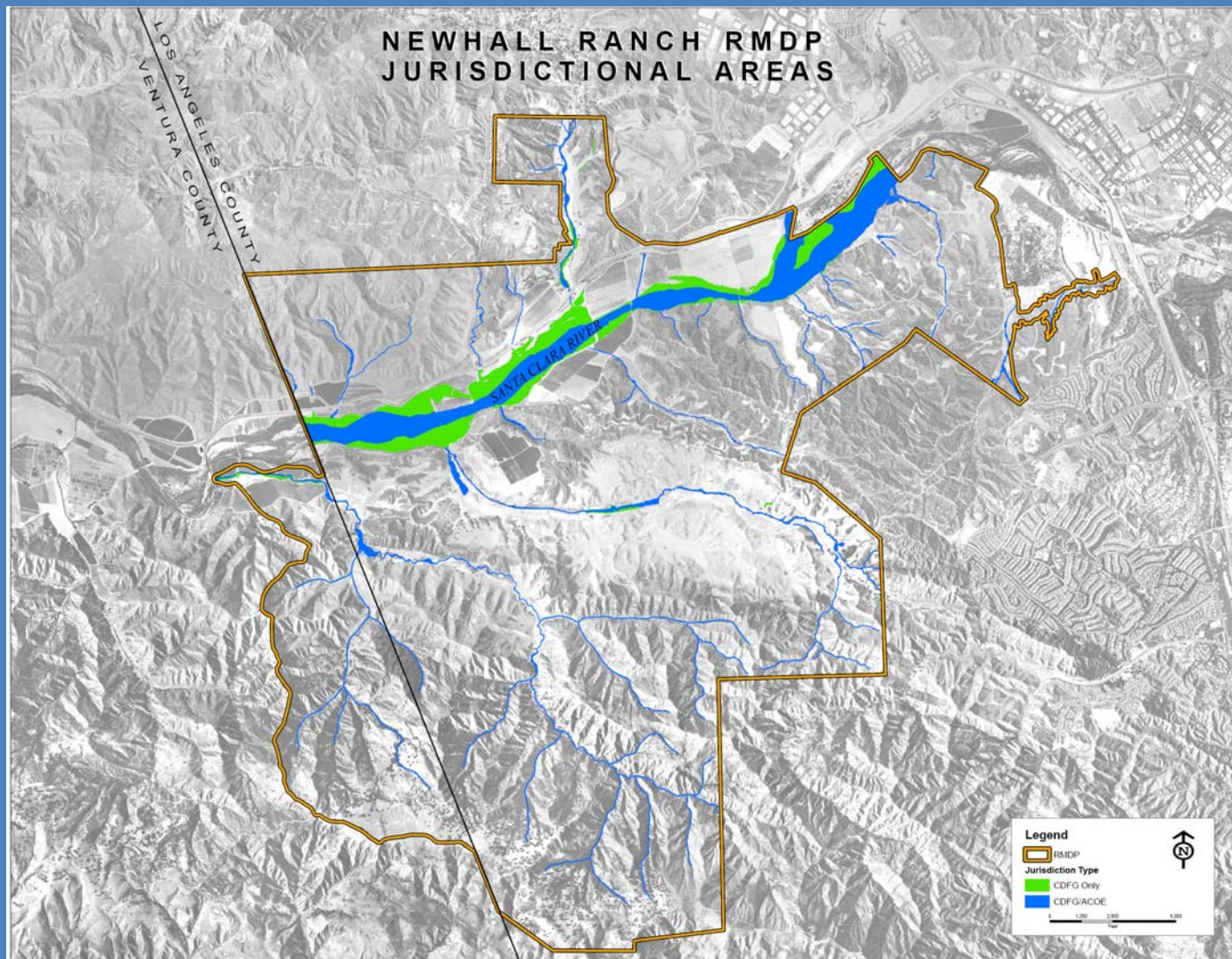


Jurisdictional Waters of the US (Corps) and State (CDFG)

	US Army Corps of Engineers	Department of Fish and Game
Santa Clara River	452 acres	758 acres
Tributaries	185 acres	202 acres
Total RMDP Jurisdictional Area	636 acres	960 acres



Corps & CDFG Jurisdictional Areas



EIS/EIR Alternatives Considered

- ◆ A wide range of alternatives were initially considered, including alternative sites
- ◆ Seven alternatives were carried forward for detailed analysis in the EIS/EIR, including the No Action/Project alternative (Alternative 1)
- ◆ The alternatives primarily represent a range of effects on jurisdictional areas and spineflower populations
- ◆ The alternatives bracket a broad range of actions, ranging from maximum development (as approved by LA County) to substantially reduced development and greater conservation of open space



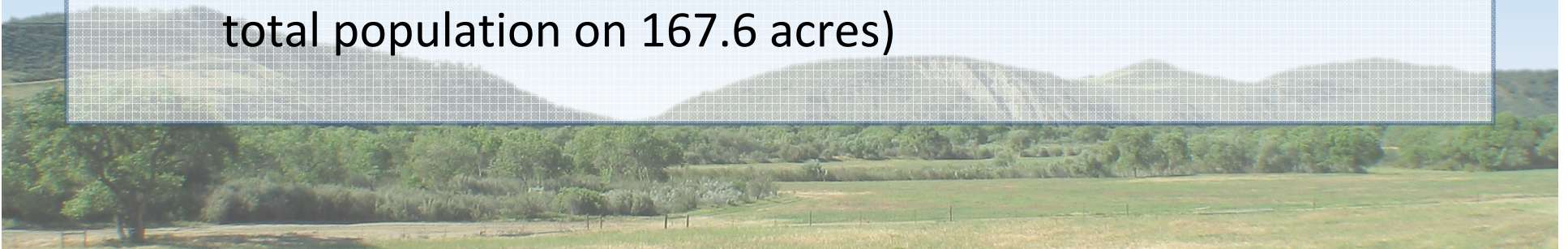
Alternative 1 – No Action/Project

- ◆ **No development of the Newhall Ranch Specific Plan area. Existing uses would continue, including grazing, agriculture, and oil/gas operations.**
- ◆ **Future development in VCC and Entrada would be reduced without a take permit for spineflower**
- ◆ **No establishment of spineflower preserves**
- ◆ **No new impacts on jurisdictional waters and streams**

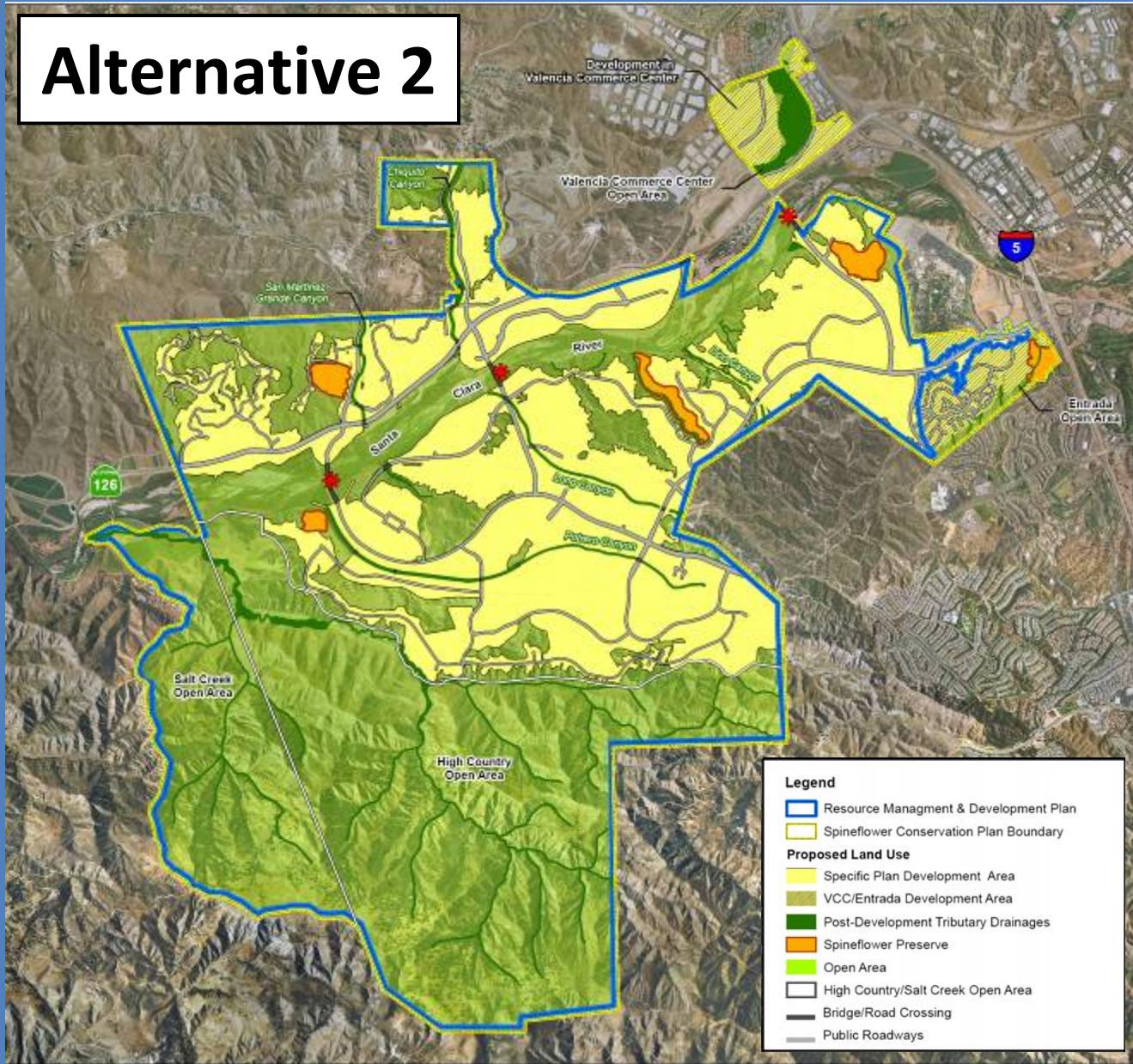


Alternative 2

- ◆ **Applicant's Proposed Project (i.e. implementation of approved Newhall Ranch Specific Plan)**
 - Three bridges over the Santa Clara River
 - Bank stabilization along the Santa Clara River and major tributaries
 - Realignment of tributaries on the Project site
 - Impacts to 43% of tributary and 5% of river riparian areas (199 of 960 acres of total riparian jurisdiction)
 - Establishment of five spineflower preserve areas (68.6% of total population on 167.6 acres)



Alternative 2



Legend

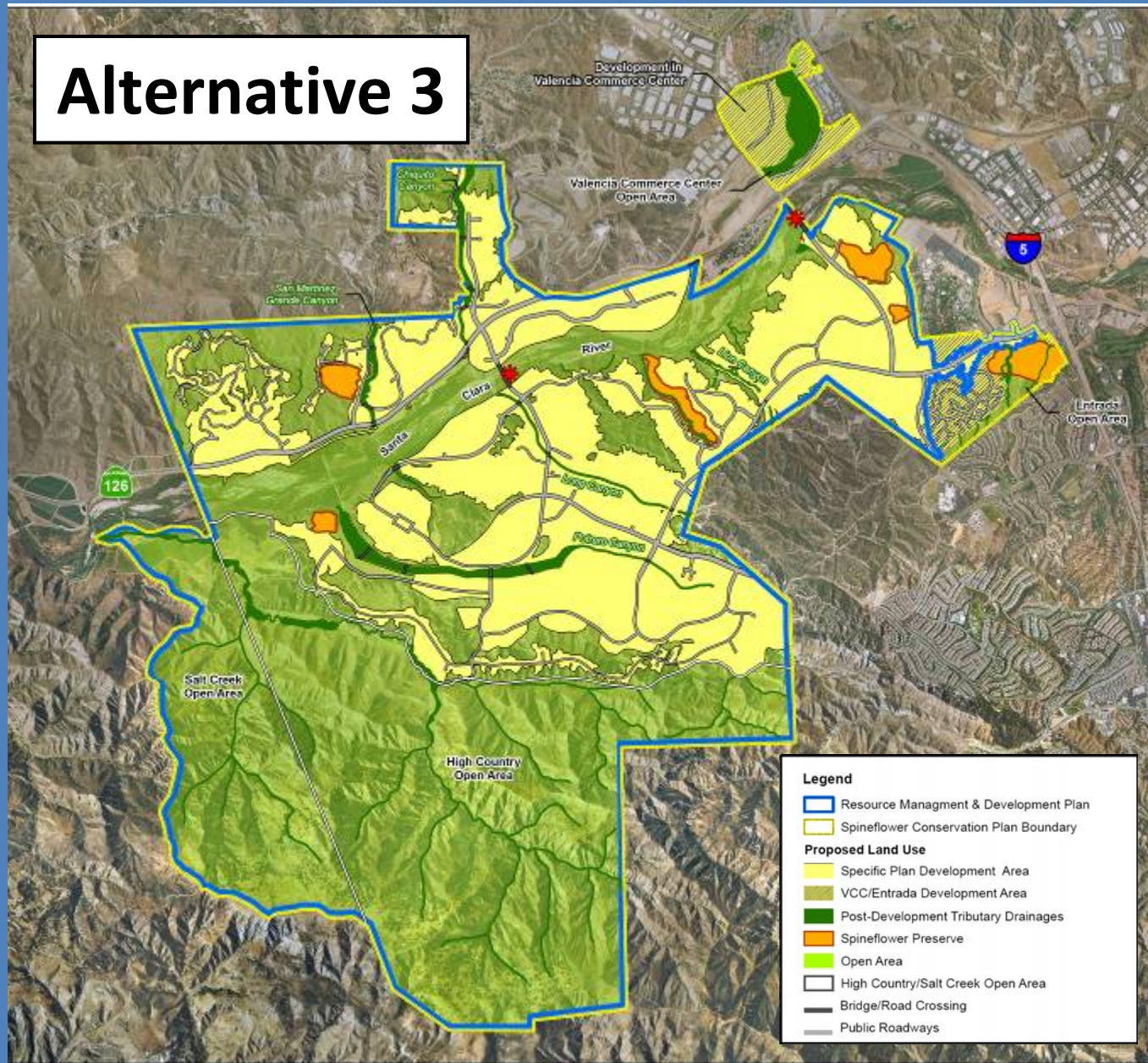
- Resource Management & Development Plan
- Spineflower Conservation Plan Boundary
- Proposed Land Use**
- Specific Plan Development Area
- VCC/Entrada Development Area
- Post-Development Tributary Drainages
- Spineflower Preserve
- Open Area
- High Country/Salt Creek Open Area
- Bridge/Road Crossing
- Public Roadways

Alternative 3

- ◆ **Eliminates Potrero bridge**
- ◆ **Additional reduction of riparian area impacts: 39% tributary, 3% river (combined total 17.6%)**
- ◆ **Increased spineflower protection and larger preserve area (77.5% of total population on 221.8 acres)**
- ◆ **Reduces residential development on the project site by 4.7% (commercial by roughly 1%)**



Alternative 3

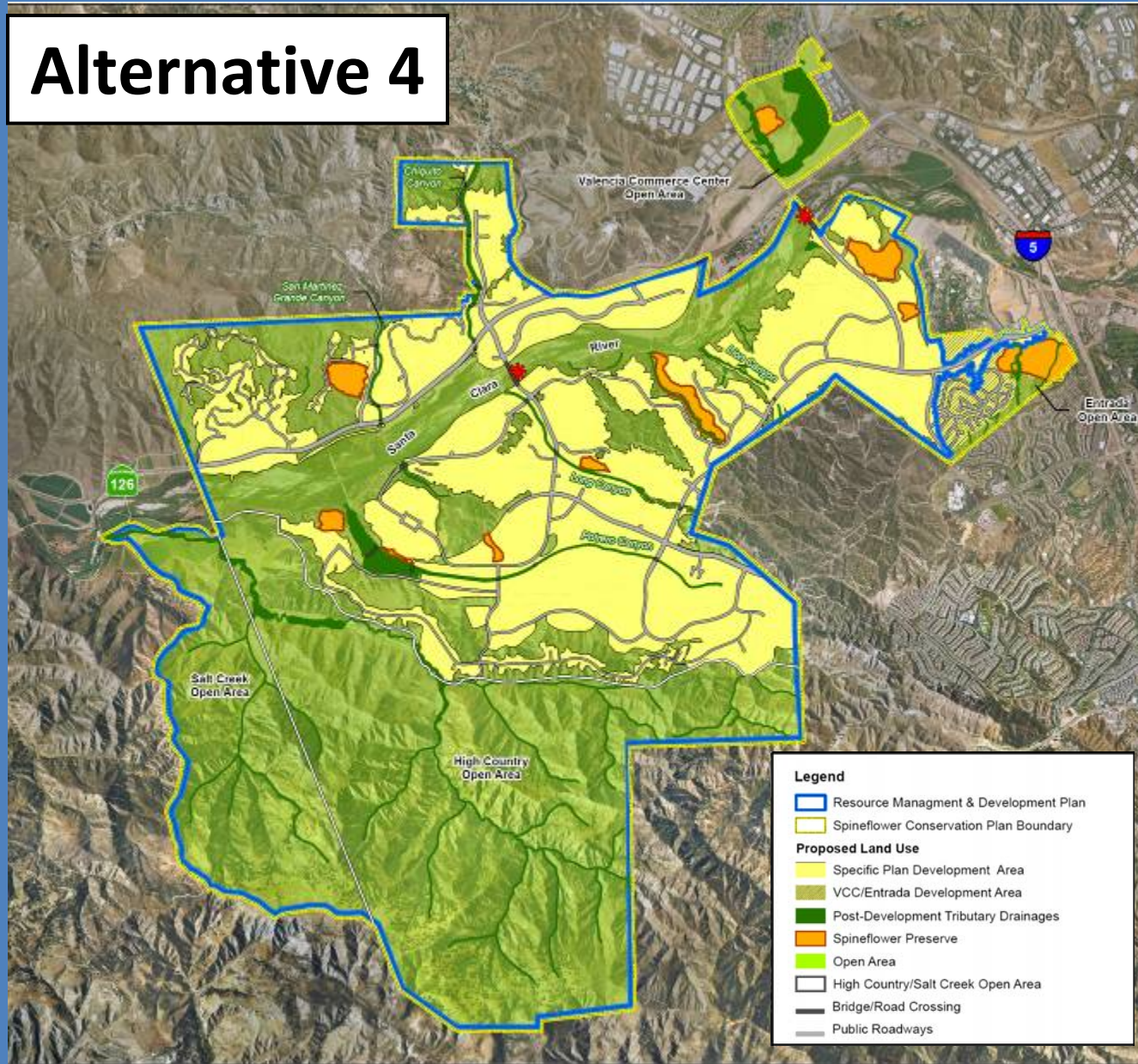


Alternative 4

- ◆ Eliminates Potrero bridge
- ◆ Additional reduction of riparian area impacts: 41% tributary, 3% river (combined total 17.5%)
- ◆ Additional increases in spineflower protection and preserve area (82.5% of total population on 259.9 acres)
- ◆ Reduces residential development on the project site by 3.4% (commercial by 37%)
- ◆ Establishes a spineflower preserve in the VCC area; no new development would occur in VCC



Alternative 4



Legend

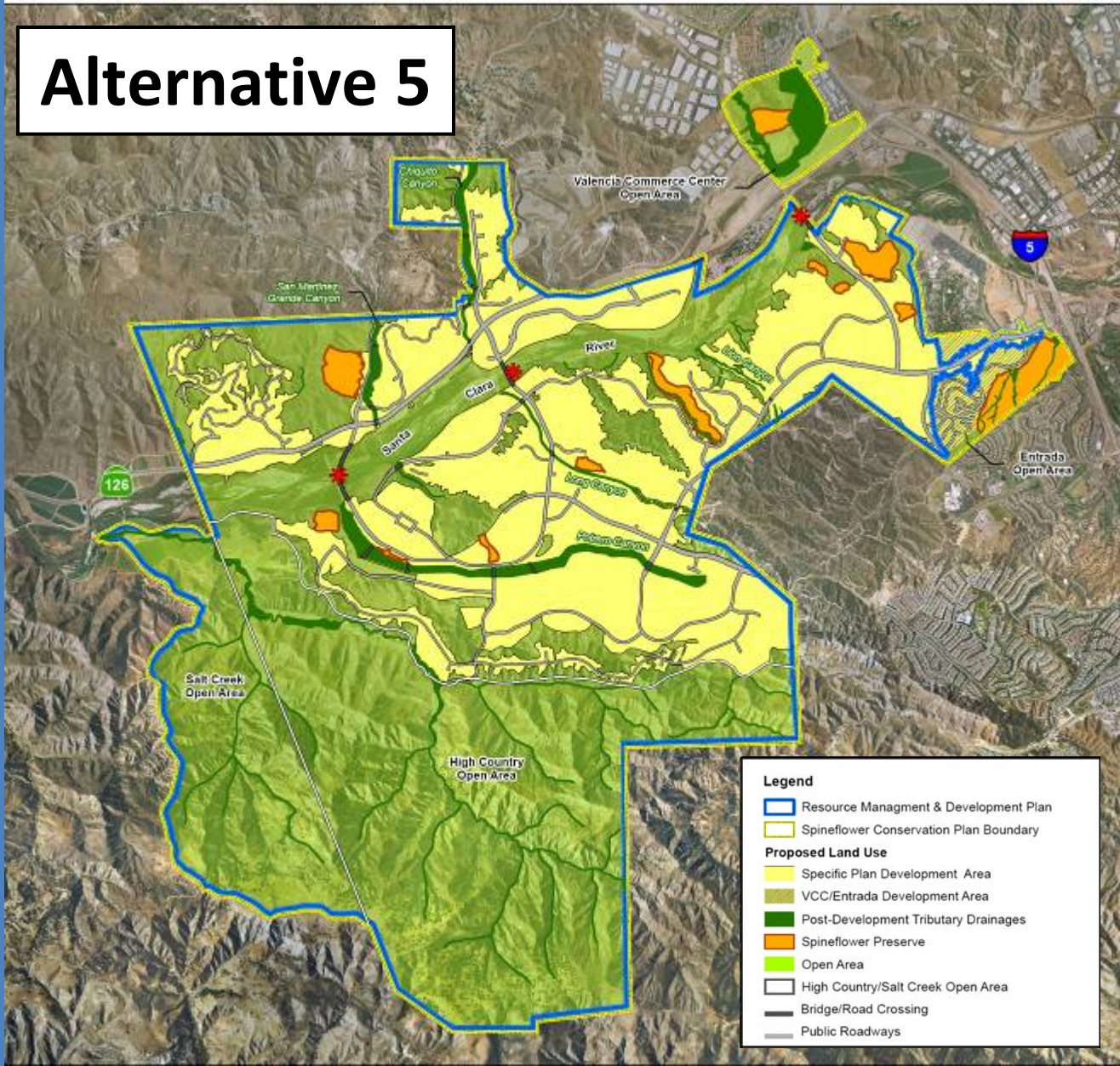
- Resource Management & Development Plan
- Spineflower Conservation Plan Boundary
- Proposed Land Use**
 - Specific Plan Development Area
 - VCC/Entrada Development Area
 - Post-Development Tributary Drainages
 - Spineflower Preserve
 - Open Area
 - High Country/Salt Creek Open Area
- Bridge/Road Crossing
- Public Roadways

Alternative 5

- ◆ Reduces impacts to major tributary channels via widening
- ◆ Includes three bridges over the Santa Clara River
- ◆ Additional reduction of riparian area impacts: 37% tributary, 4% river (combined total 18.6%)
- ◆ Further increases in spineflower protection and preserve area (84.2% of total population on 338.6 acres)
- ◆ Reduces residential development on the project site by 6.5% (commercial by 38.5%)
- ◆ Establishes a spineflower preserve in the VCC area; no new development would occur in VCC



Alternative 5

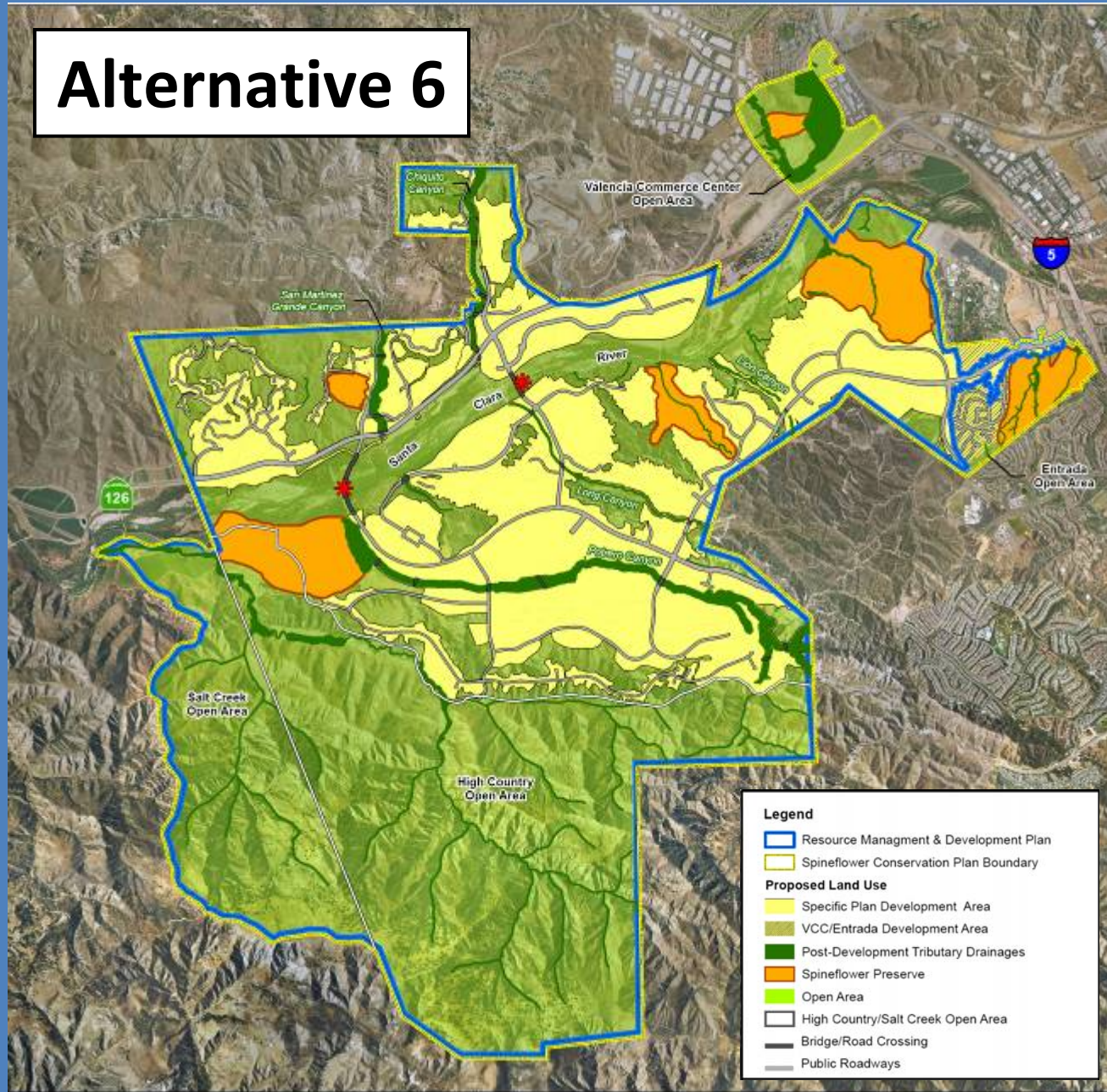


Alternative 6

- ◆ **Additional reductions in impacts to the major tributary channels**
- ◆ **Includes two bridges over the Santa Clara River**
- ◆ **Additional reduction of riparian area impacts: 35% tributary, 2% river (combined total 16.4%)**
- ◆ **Further increases in spineflower protection and preserve area (88.5% of total population on 891.2 ac.)**
- ◆ **Reduces residential development on the project site by 11.4% (commercial by 38.5%)**
- ◆ **Establishes a spineflower preserve in the VCC area; no new development would occur in VCC**

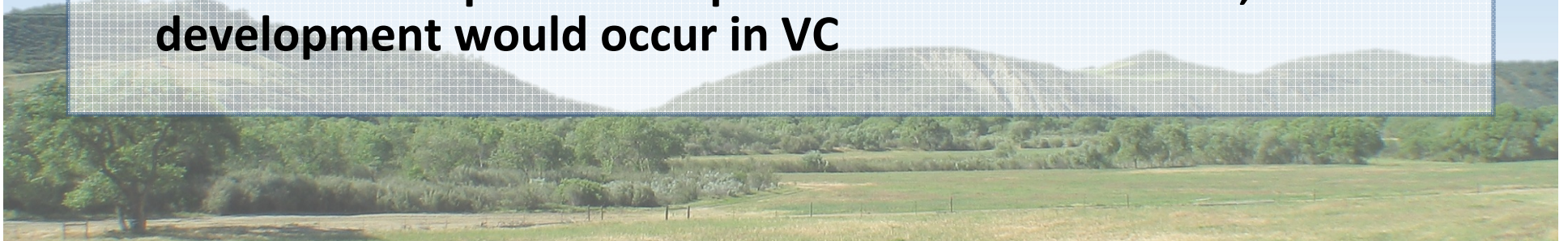


Alternative 6

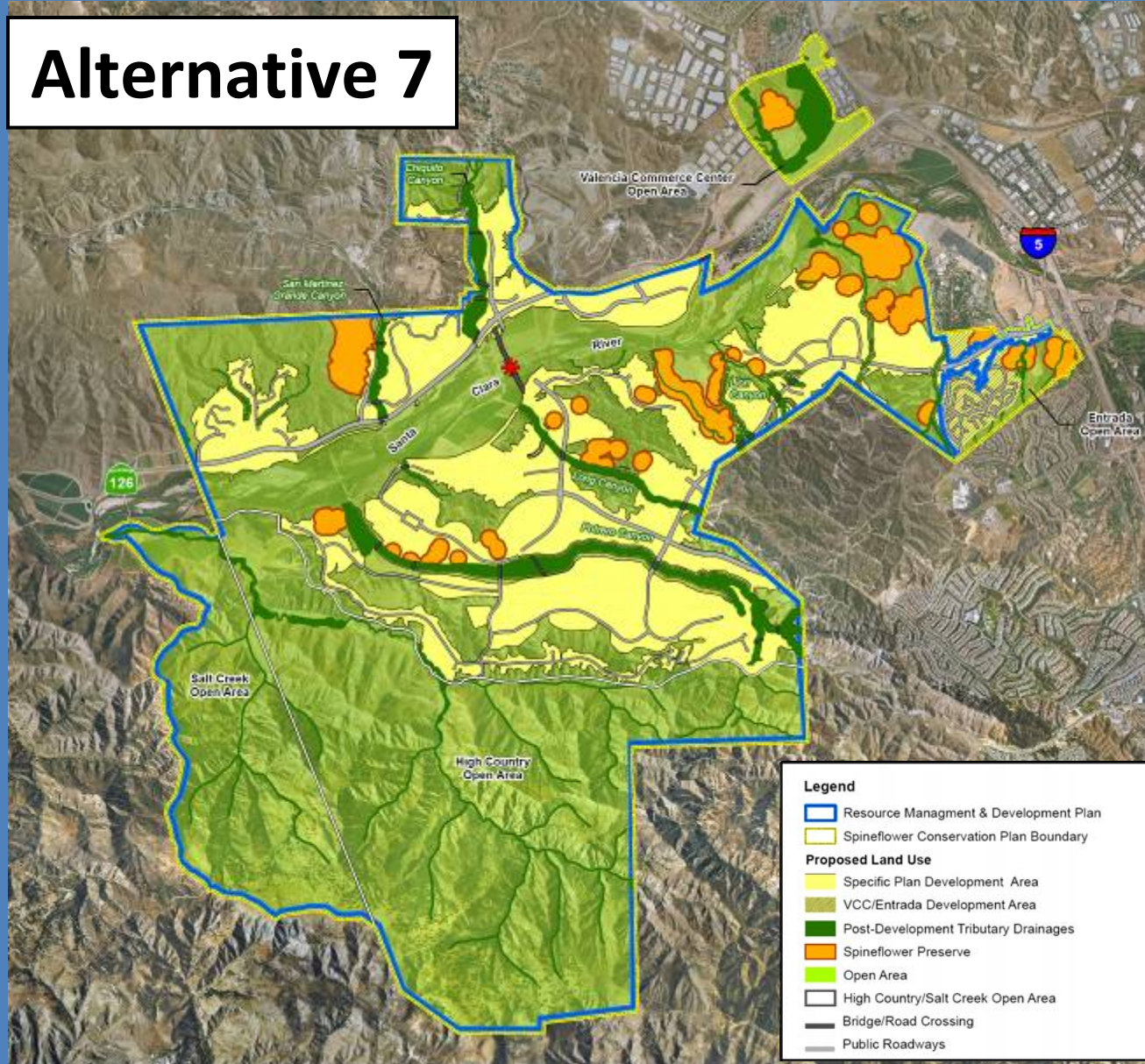


Alternative 7

- ◆ Avoids 100-year flood plains & most spineflower areas
- ◆ Major tributary channels not realigned (bank stabilization used)
- ◆ Includes one bridge over the Santa Clara River
- ◆ Additional reduction of riparian area impacts: 6% tributary, 1% river (combined total 2%)
- ◆ Less spineflower preserve acreage than Alt 6, but results in almost no take (98.2% population on 660.5 ac.)
- ◆ Reduces residential development on the project site by 23.4% (commercial by 59.4%)
- ◆ Establishes a spineflower preserve in the VCC area; no new development would occur in VC



Alternative 7



Alternatives Summary of Resource Conservation & Future Development

◆ Resources protected and development facilitated across the range of alternatives*:

– Riparian Area Impacted:	57 – 199 ac.
– Spineflower Population Protected:	13.9 – 19.7 ac.
– Spineflower Preserve Areas:	167.6 – 891.2 ac.
– Total Developed Area**:	2,079 – 3,815 ac.

* With the No Action Alternative, no resource protection or new development would occur.

** Represents the combined RMDP and SCP planning areas



Resource/Issue Areas Analyzed

- **Surface Water Hydrology & Flood Control**
- **Geomorphology & Riparian Resources**
- **Water Resources**
- **Water Quality**
- **Biological Resources**
- **Jurisdictional Waters & Streams**
- **Air Quality**
- **Traffic**
- **Noise**
- **Cultural Resources**
- **Paleontological Resources**
- **Agricultural Resources**
- **Geology & Geologic Hazards**
- **Land Use**
- **Visual Resources**
- **Parks, Recreation, & Trails**
- **Hazards, Hazardous Materials, & Public Safety**
- **Public Services**
- **Socioeconomics & Environmental Justice**
- **Solid Waste**

Summary of Significant Impacts

- **Geomorphology & Riparian Resources**
- **Water Quality**
- **Biological Resources**
- **Jurisdictional Waters & Streams**
- **Air Quality**
- **Traffic**
- **Noise**
- **Cultural Resources**
- **Paleontological Resources**
- **Agricultural Resources**
- **Geology and Geologic Hazards**
- **Land Use**
- **Visual Resources**
- **Hazards, Haz. Materials, & Public Safety**
- **Solid Waste Services**



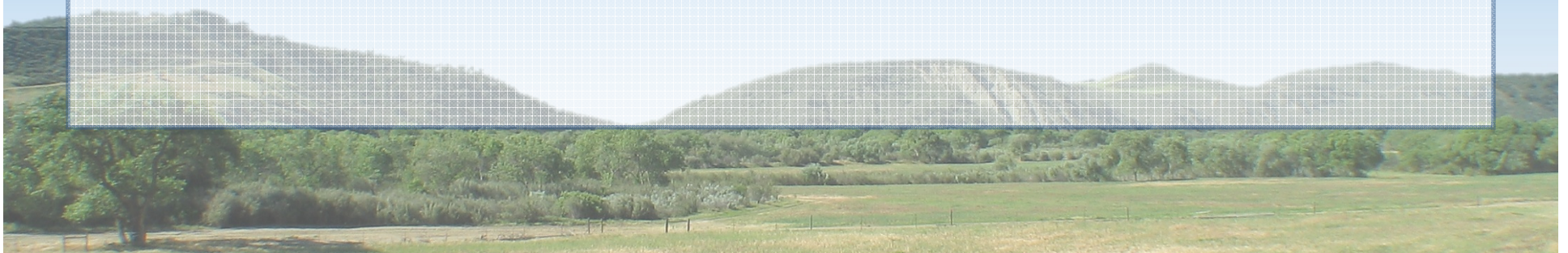
Significant Unavoidable Impacts

- ◆ **The EIS/EIR identifies 21 significant and unavoidable impacts for Alternative 2:**
 - Biological Resources
 - Air Quality
 - Noise
 - Agricultural Resources
 - Land Use
 - Visual Resources
 - Hazards, Hazardous Materials, & Public Safety
 - Solid Waste Services
- ◆ **Alternatives 3 through 7 would result in fewer significant unavoidable impacts, ranging from 14 (Alt. 6) to 18 (Alt. 3)**



Mitigation for Impacts

- ◆ **274 mitigation measures were adopted as conditions of approval by LA County for the Newhall Ranch Specific Plan**
- ◆ **186 additional mitigation measures are recommended in the this Draft EIS/EIR**
 - 103 additional mitigation measures are recommended for effects on biological, riparian, and wetland resources



EIS/EIR Public Review

◆ **The Draft EIS/EIR is available for review at the following locations:**

- Valencia Library, 23743 West Valencia Blvd., Santa Clarita
- Sylmar Library, 14561 Polk Street, Sylmar
- Ventura H.P. Wright Library, 57 Day Road, Ventura
- Castaic Library, 27971 Sloan Canyon Road, Castaic
- CDFG Los Alamitos Office, 4665 Lampson Ave., Los Alamitos

◆ **The Draft EIS/EIR can access online at:**

[*www.dfg.ca.gov/regions/5/newhall*](http://www.dfg.ca.gov/regions/5/newhall)

◆ **Comments must be received by June 26, 2009**

