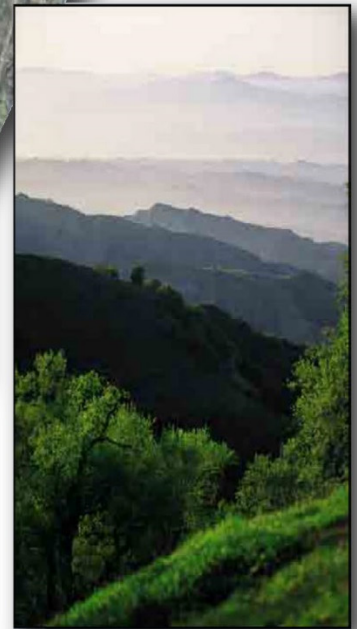
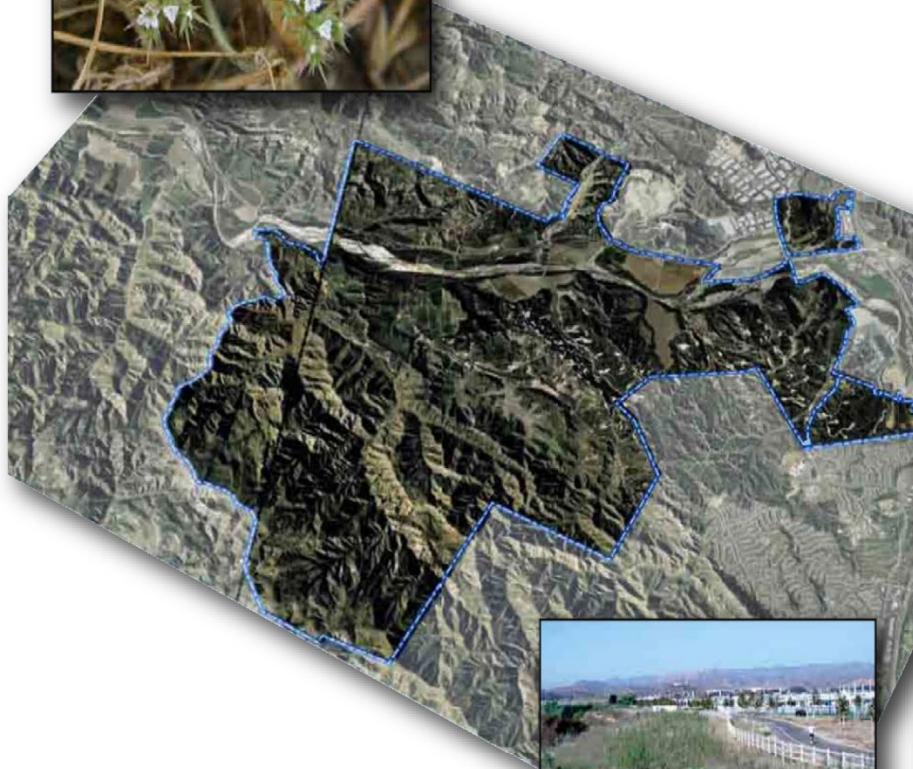


Newhall Ranch Resource Management and Development Plan and Spineflower Conservation Plan

Final Additional Environmental Analysis

California Department of Fish and Wildlife
SCH No. 2000011025

June 12, 2017



Newhall Ranch
Resource Management and Development Plan
and Spineflower Conservation Plan

Final
Additional Environmental Analysis

PREPARED BY:

California Department of Fish and Wildlife
1416 Ninth Street
Sacramento, CA 95818

WITH ASSISTANCE FROM:

Ascent Environmental, Inc.
455 Capitol Mall, Suite 300
Sacramento, CA 95814

AND CONSULTATION WITH:

California Air Resources Board
1001 I Street
Sacramento, CA 95812

June 12, 2017