

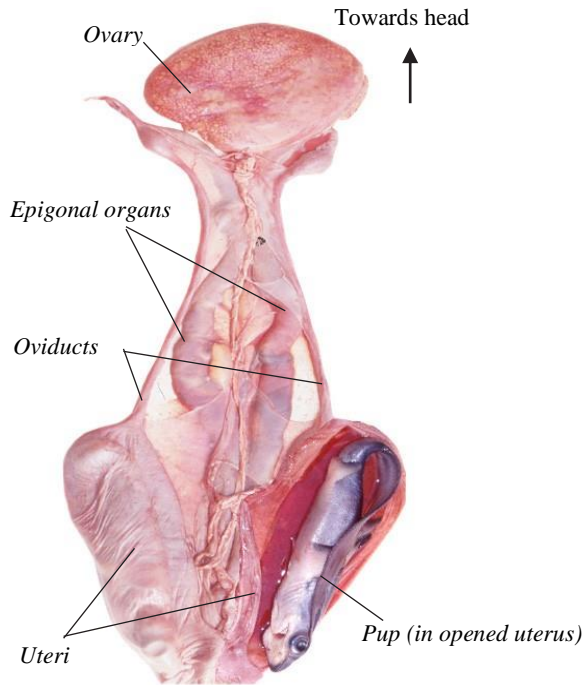
- THRESHER SHARKS NEEDED -

REPRODUCTIVE TRACTS AND PREGNANT FEMALES

Southern California is a known pupping ground for the common thresher shark (*Alopias vulpinus*) and large pregnant threshers are sometimes caught by recreational anglers. The Southwest Fisheries Science Center conducts research on the reproductive biology of common thresher sharks and is looking for samples from **females 140 cm (4.6 feet) fork length or larger, preferably pregnant**. If you happen to keep a female common thresher shark, please provide a section of the backbone, the reproductive system as shown in the figures below, and the whole head if possible. If you are not sure what to remove, just include all the guts. Please keep thresher samples on ice or as cold as possible. **Do not kill threshers for the sole intent to donate samples.**

- **Entire female reproductive tract:**

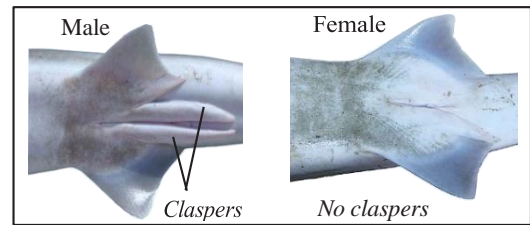
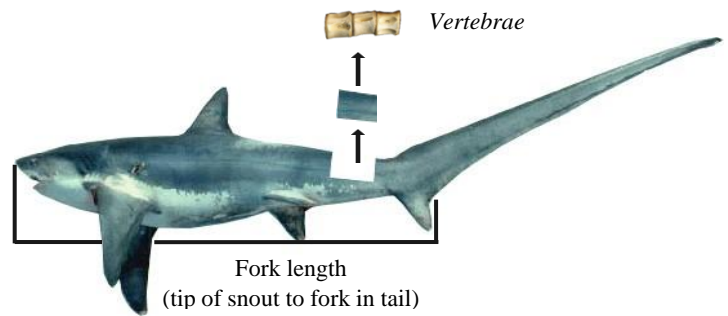
- Ovary
- Oviduct
- Epigonal organs
- Uteri
- Pups



- **Whole Head**

- **Vertebrae:**

- 3 or 4 contiguous pieces of vertebrae removed from the dorsal base of tail (no need to remove flesh)



To donate thresher shark biological samples or to arrange for a pickup, please contact:

Antonella.preti@noaa.gov

858-342-6372

858-546-5640

This research is a collaboration between NOAA Fisheries and the California Dept. of Fish and Wildlife



NOAA FISHERIES
NATIONAL OCEANIC AND ATMOSPHERIC ADMINISTRATION