





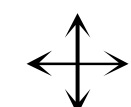
Alameda County

Number of unique trout planting locations within the county:
7

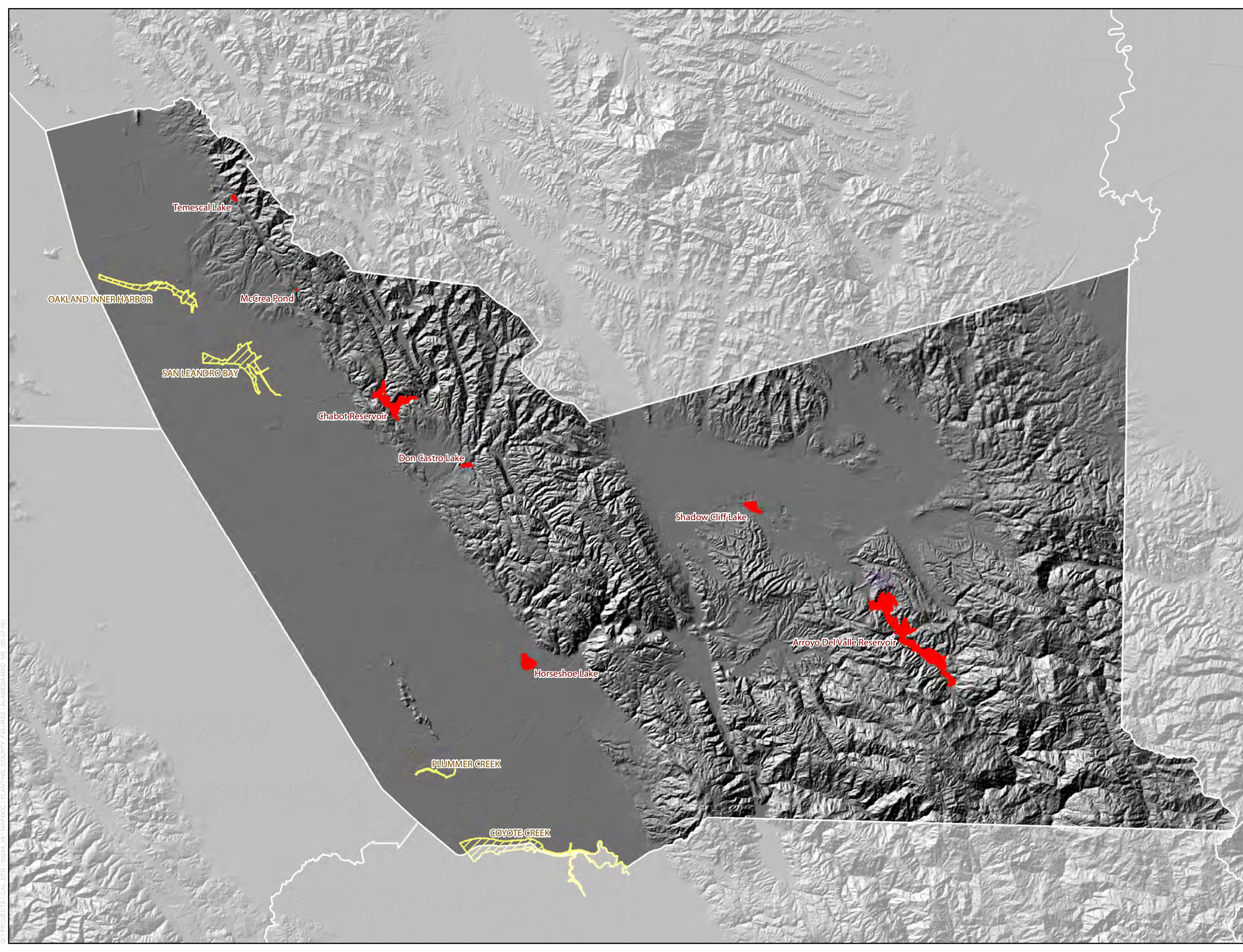
Number of unique anadromous planting locations within the County:
4

Legend

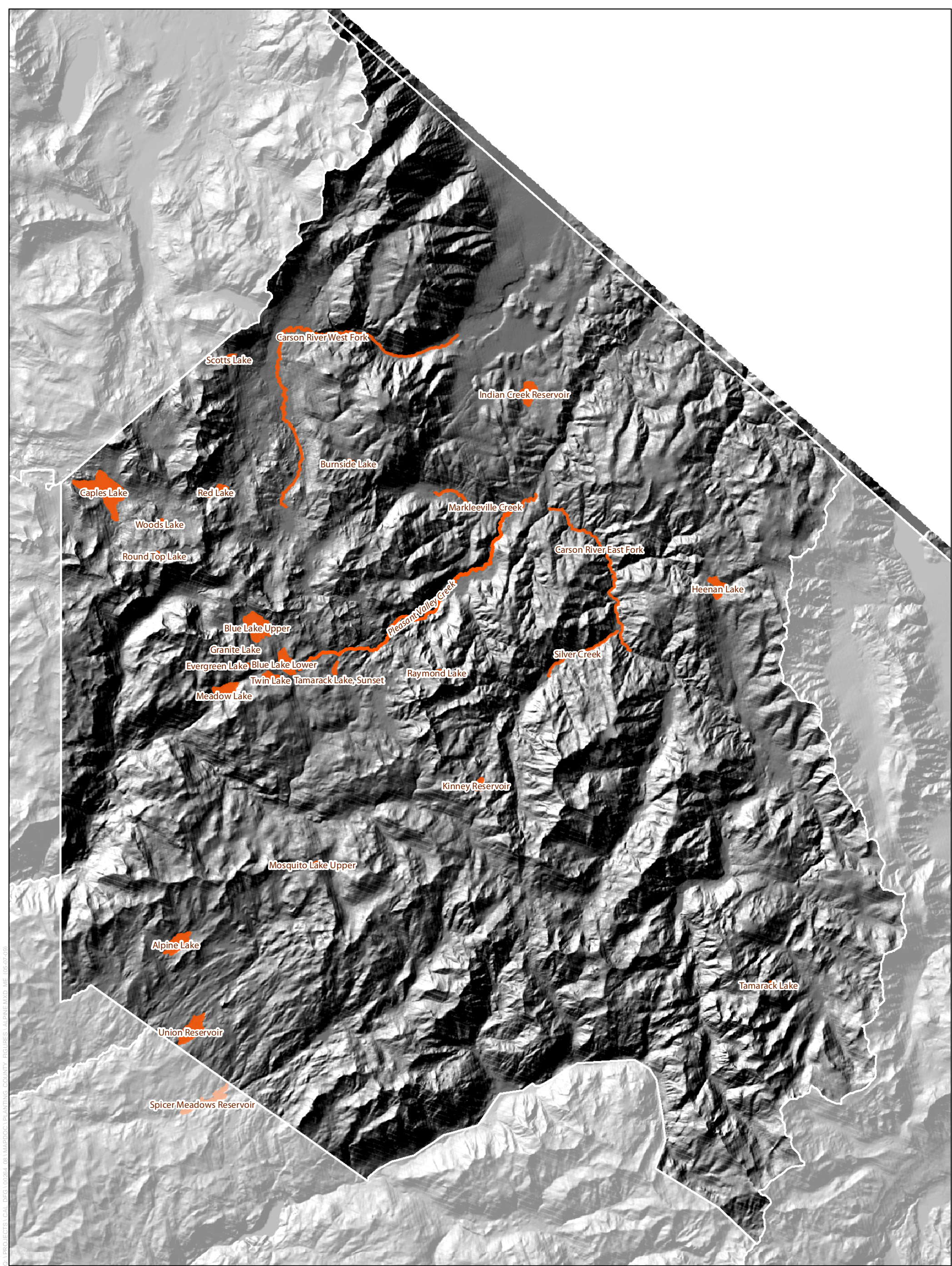
-  Hatchery
-  Anadromous Release Waters
-  Anadromous Release Waters
-  Inland Release Waters



0 2 4 Miles



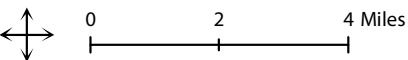
C:\PROJECTS\CAL_DFG\10264_08\MAPDOC\PLANTING_COUNTY_FIGURES\ALAMEDA.MXD, ME (05-07-09)



C:\PROJECTS\CAL_DFG\00284_08\MAPDOC\PLANTING_COUNTY_FIGURES\ALPINE.MXD - 05-07-09

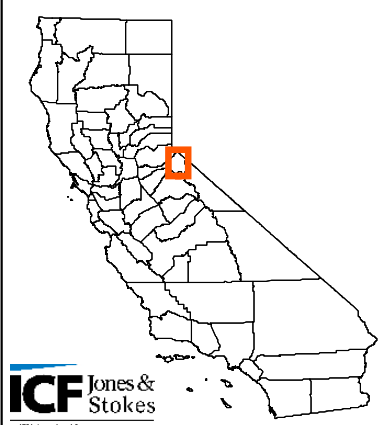
Alpine County

-  Hatchery
-  Inland Release Waters
-  Inland Release Waters



Number of unique trout planting locations within the county:
28

Number of unique anadromous planting locations within the County:
0






ICF Jones & Stokes
A 100% Employee Owned Company

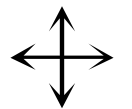
Amador County

Number of unique trout planting locations within the county:
6

Number of unique anadromous planting locations within the County:
1

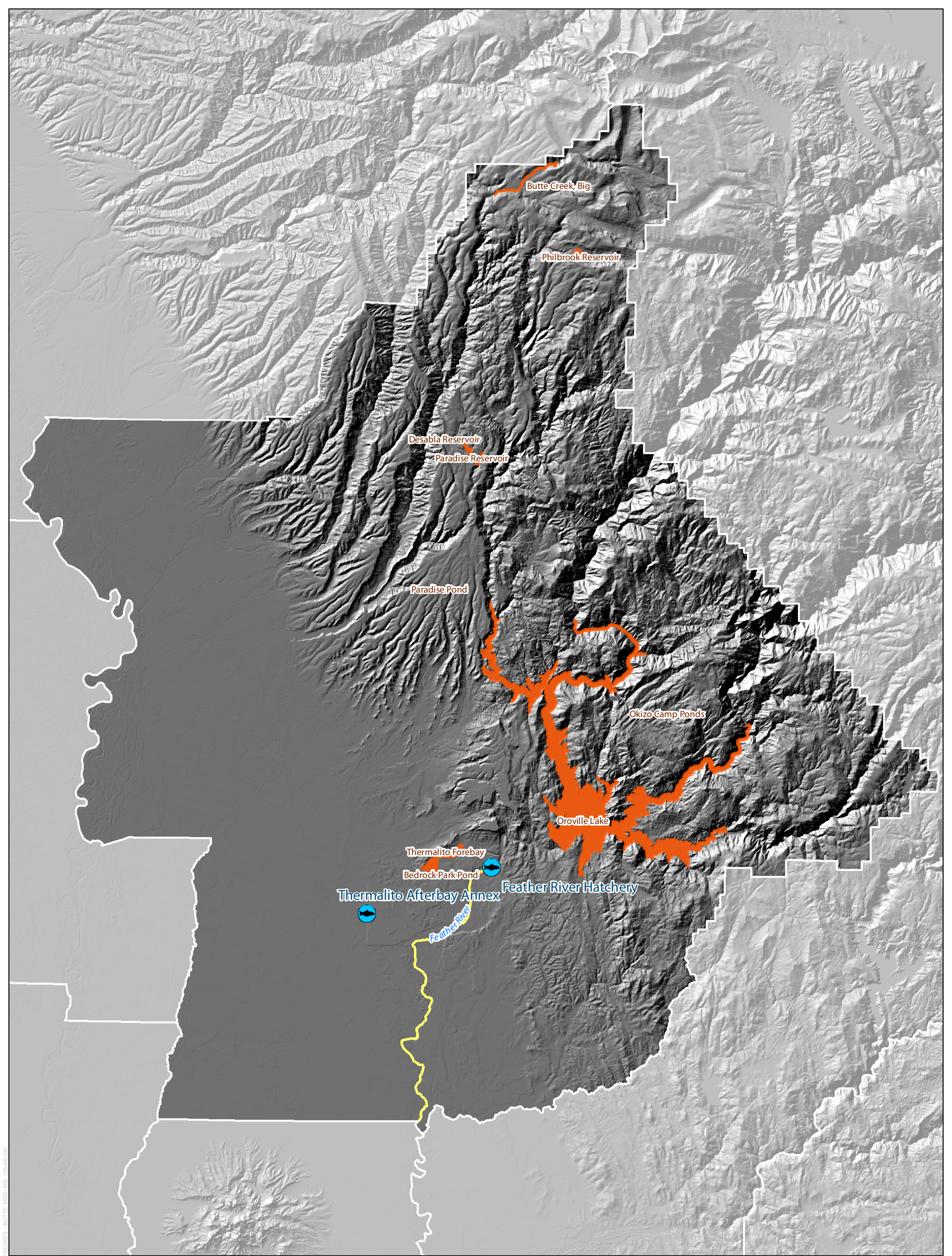
Legend

-  Hatchery
-  Anadromous Release Waters
-  Inland






0 2 4 Miles



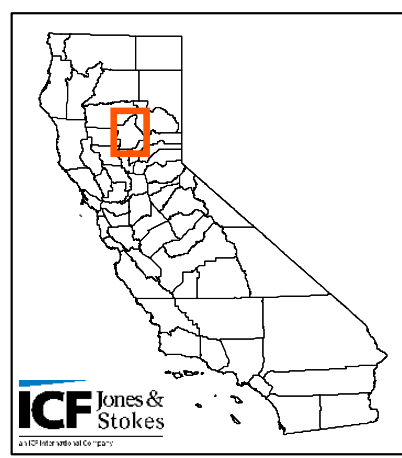


Butte County

-  Hatchery
 -  Anadromous Release Waters
 -  Inland Release Waters
- 0 4 8 Miles

Number of unique trout planting locations within the county:
9

Number of unique anadromous planting locations within the County:
1



Q:\PROJECTS\CAL_DFG\00284_081\MAPDOC\PLANTING_COUNTY_FIGURES\BUTTE.MXD ME (05-06-09)

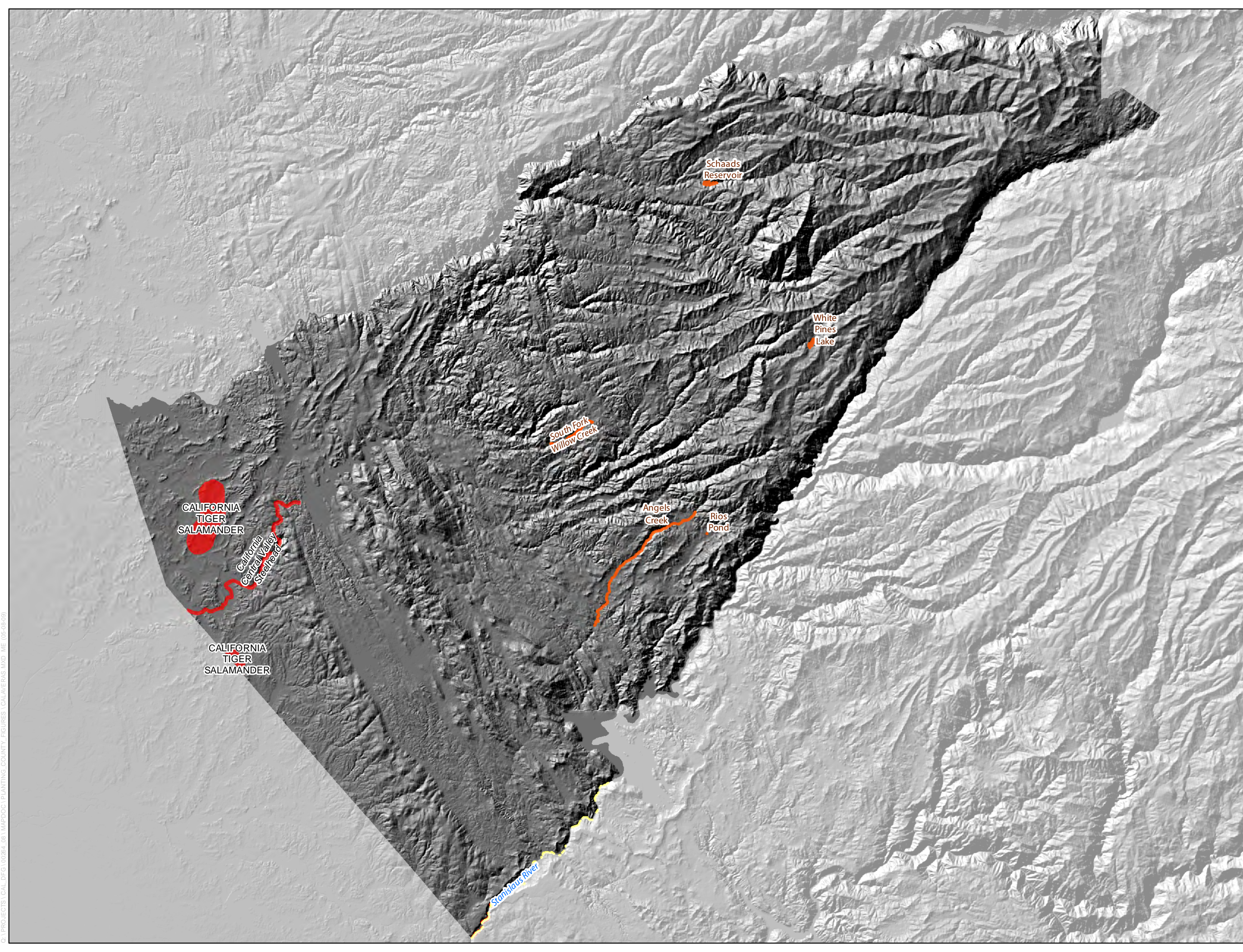
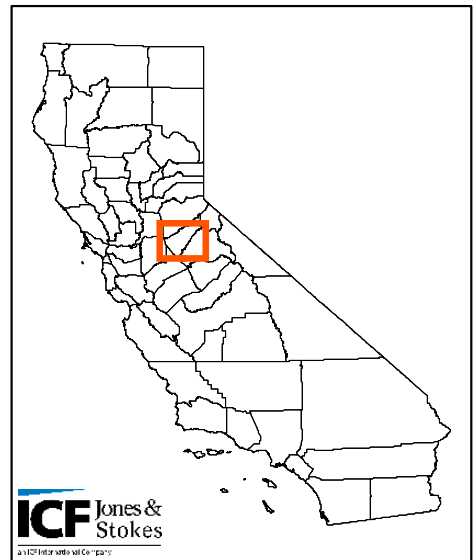
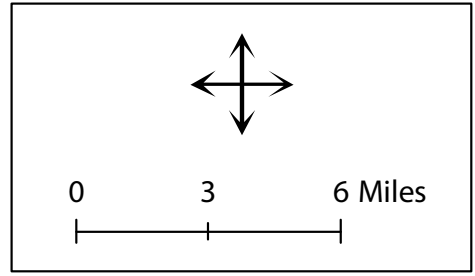
Calaveras County

Number of unique trout planting locations within the county:
5

Number of unique anadromous planting locations within the County:
1

Legend

-  Hatchery
-  Anadromous Release Waters
-  Inland Release Waters
-  Inland Release Waters
-  USFWS Critical Habitat
-  USFWS Critical Habitat



Q:\PROJECTS\CAL_DFG\00284_08\MAPDOC\PLANTING_COUNTY_FIGURES\CALAVERAS.MXD ME (05-08-09)

Colusa County





Number of unique trout planting locations within the county:

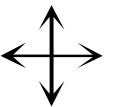
1

Number of unique anadromous planting locations within the County:

0

Legend

-  Hatchery
-  Anadromous Release Waters
-  Anadromous Release Waters
-  Inland Release Waters



0 3 6 Miles







C:\PROJECTS\CAL_DFG\10264_08\MAPDOC\PLANTING_COUNTY_FIGURES\COLUSA_MXD_ME (05-06-09)

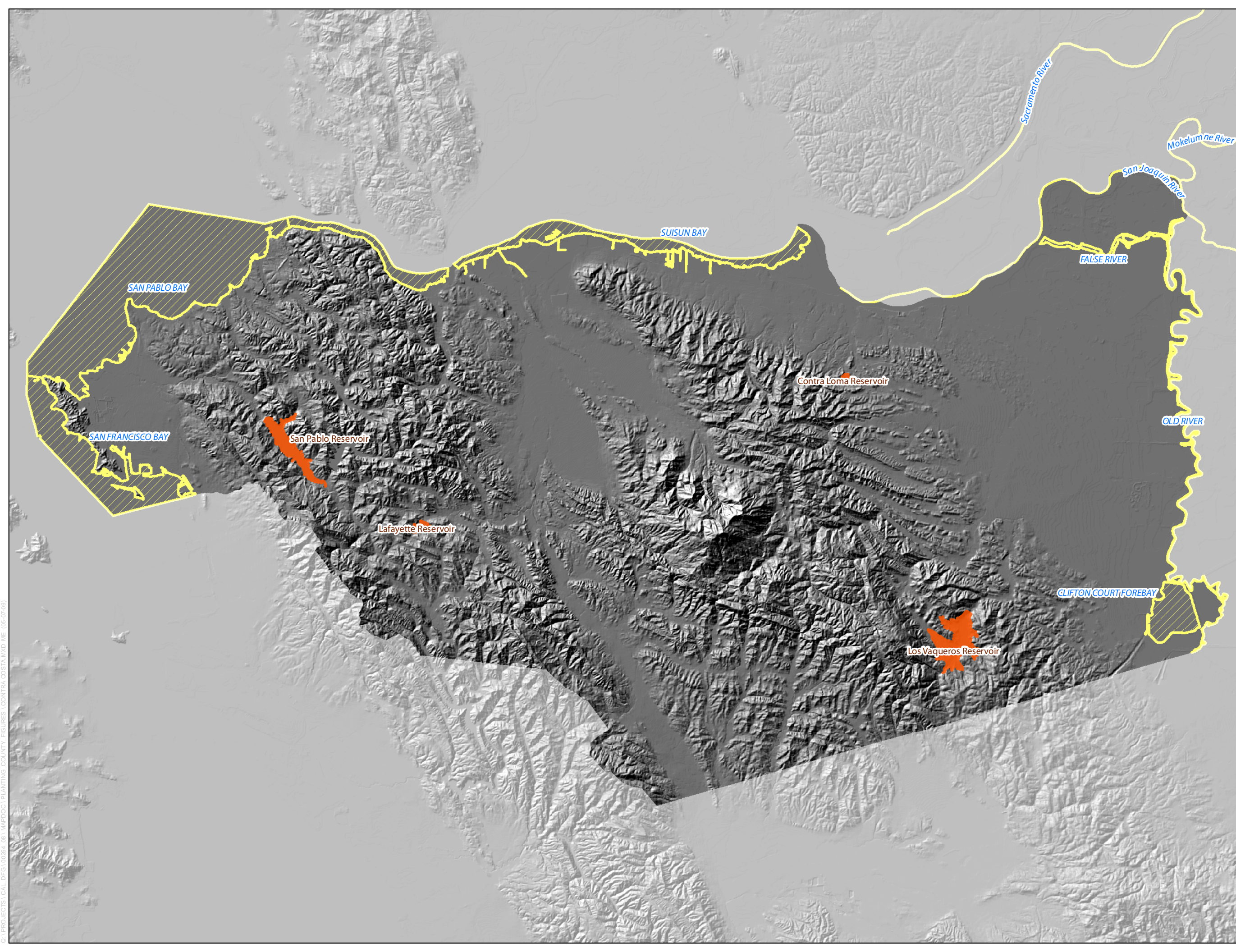
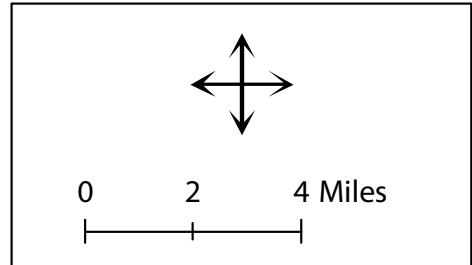
Contra Costa County

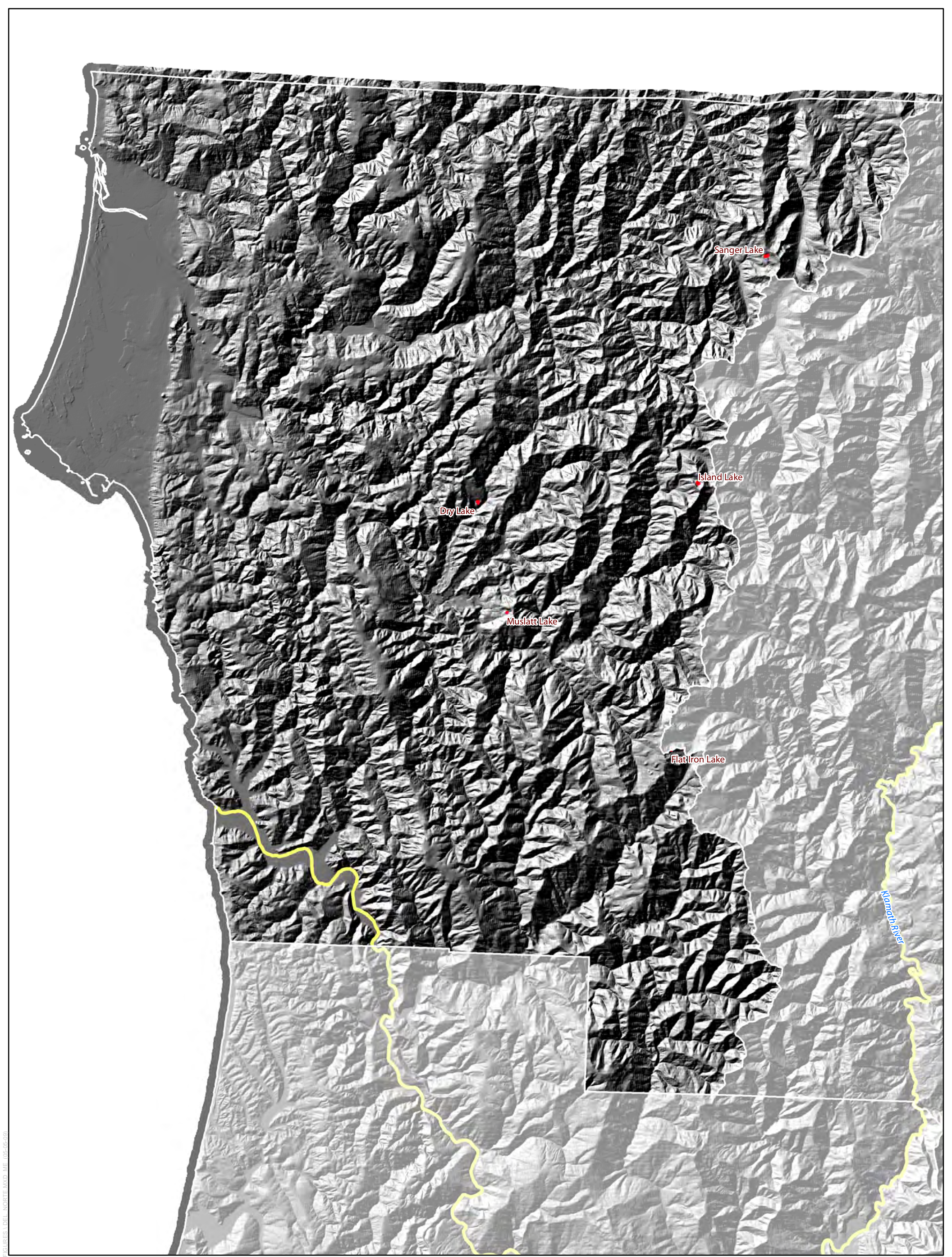
Number of unique trout planting locations within the county:
4

Number of unique anadromous planting locations within the County:
7





Legend

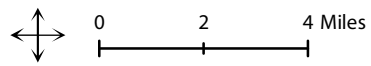
-  Hatchery
-  Anadromous Release Waters
-  Anadromous Release Waters
-  Inland Release Waters





Del Norte County

-  Hatchery
-  Anadromous Release Waters
-  Anadromous Release Waters
-  Inland Release Waters



Number of unique trout planting locations within the county:
5

Number of unique anadromous planting locations within the County:
1







Q:\PROJECTS\CAL_DFG\02264_081\MAPDOC\PLANTING_COUNTY_FIGURES_1.DEL_NORTE.MXD_ME (05-05-09)

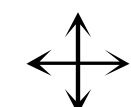
El Dorado County

Number of unique trout planting locations within the county:
33

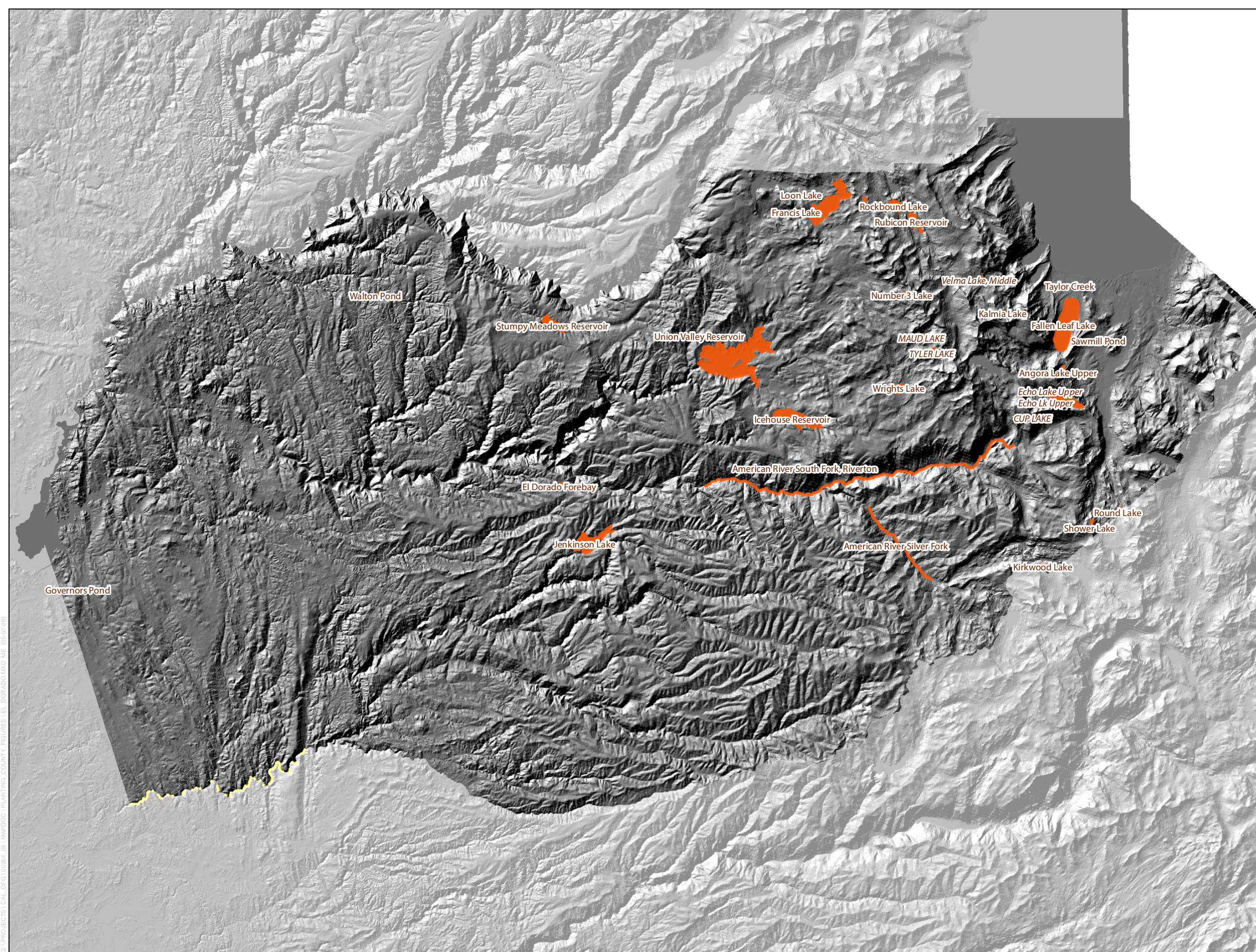
Number of unique anadromous planting locations within the County:
1

Legend

-  Hatchery
-  Anadromous Release Waters
-  Inland Release Waters
-  Inland Release Waters



0 3 6 Miles






Q:\PROJECTS\CAL_DFG\00284_08\MAPDOC\PLANTING_COUNTY_FIGURES\EL_DORADO.MXD (05-07-09)

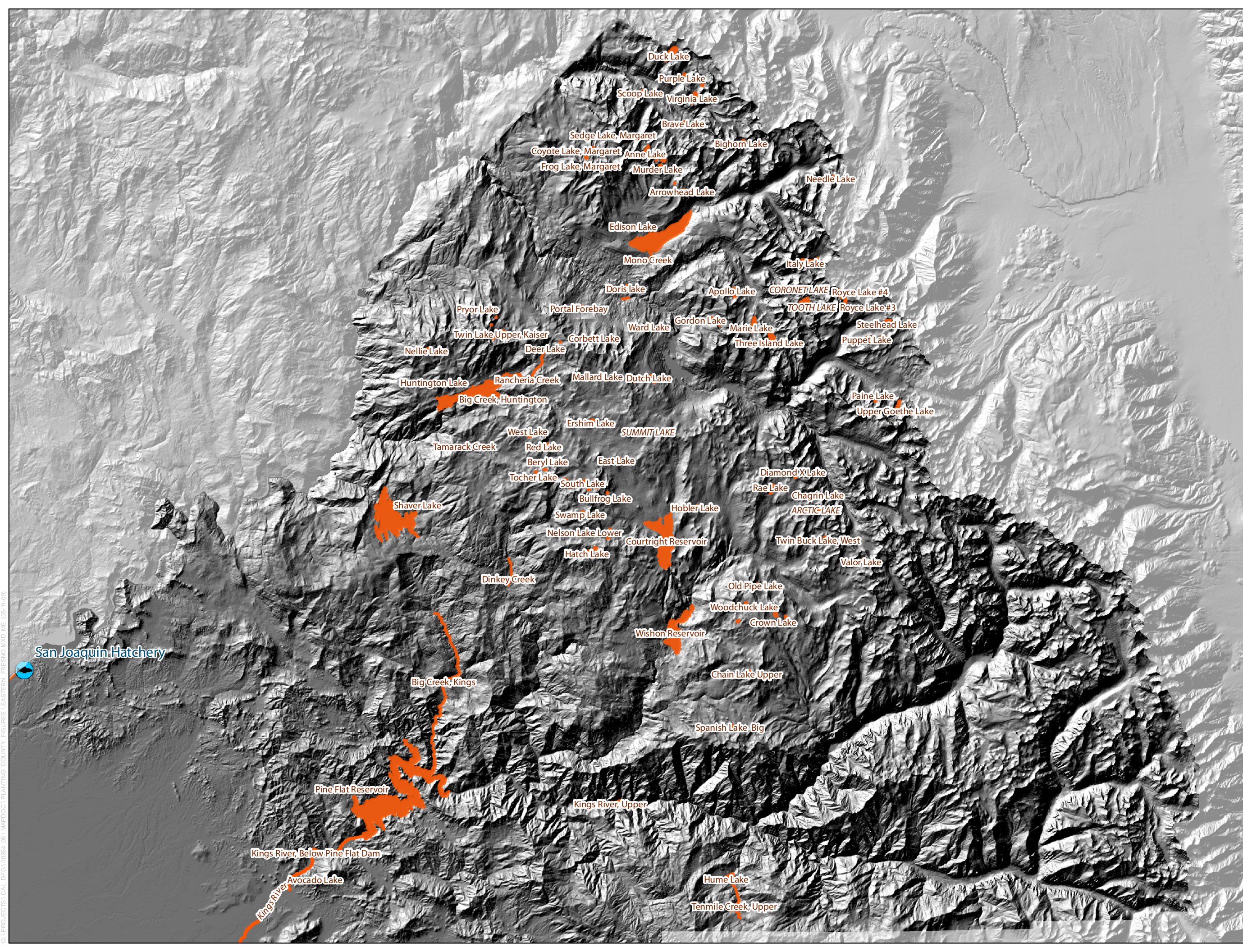
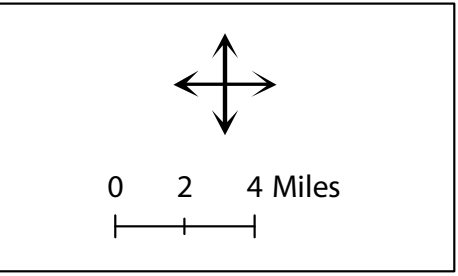
Eastern Fresno County

Number of unique trout planting locations within the county:
119

Number of unique anadromous planting locations within the County:
0

Legend

-  Hatchery
-  Inland Release Waters
-  Inland Release Waters



C:\PROJECTS\CAL_DFG\00284_08\MAPDOC\PLANTING_COUNTY_FIGURES\EASTERN_FRESNO.MXD ME (05-11-09)