




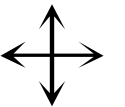
Western Fresno County

Number of unique trout planting locations
119

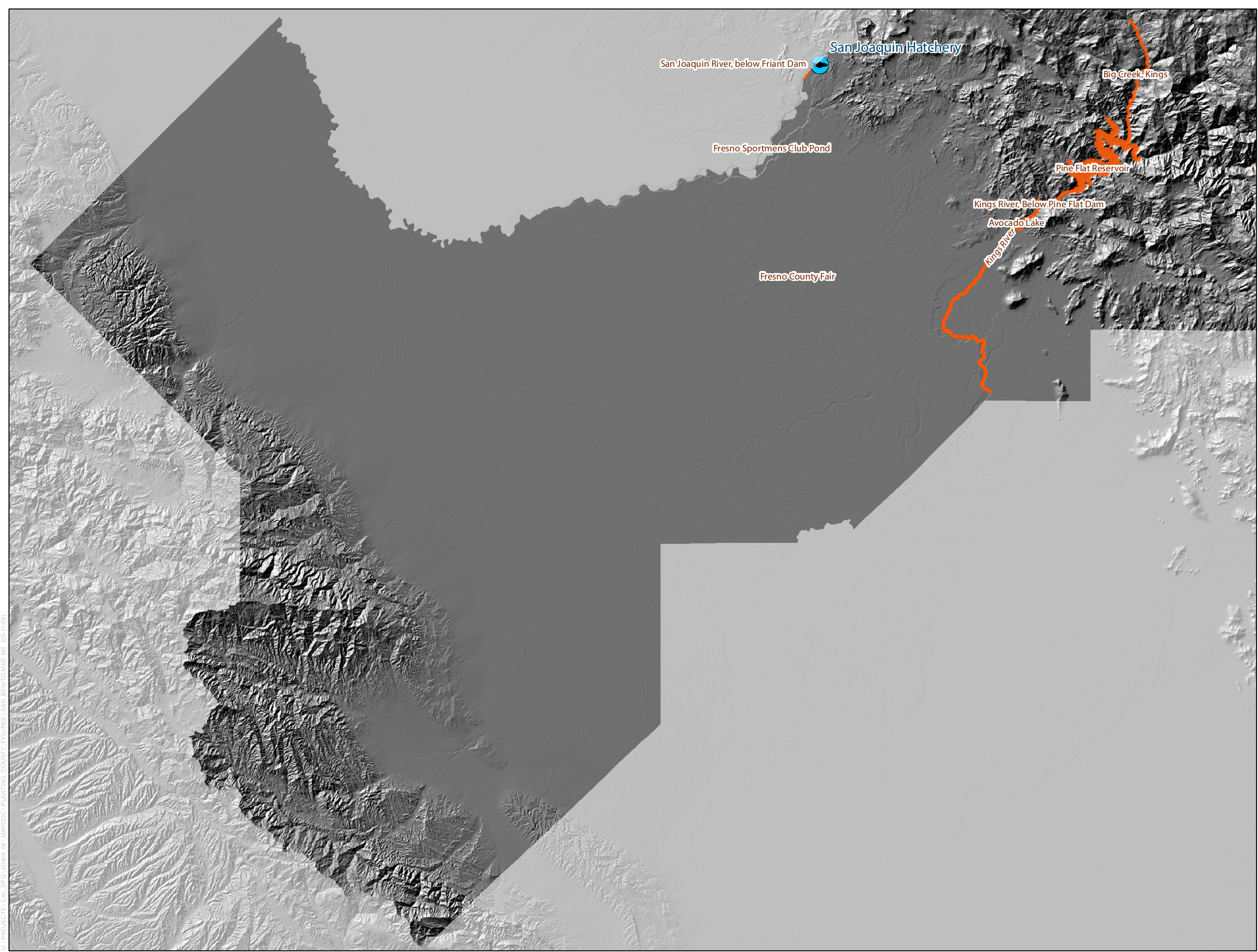
Number of unique anadromous planting locations within the County:
0

Legend

-  Hatchery
-  Inland Release Waters
-  Inland Release Waters



0 3 6 Miles







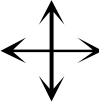
Glenn County

Number of unique trout planting locations within the county:
2

Number of unique anadromous planting locations within the County:
0

Legend

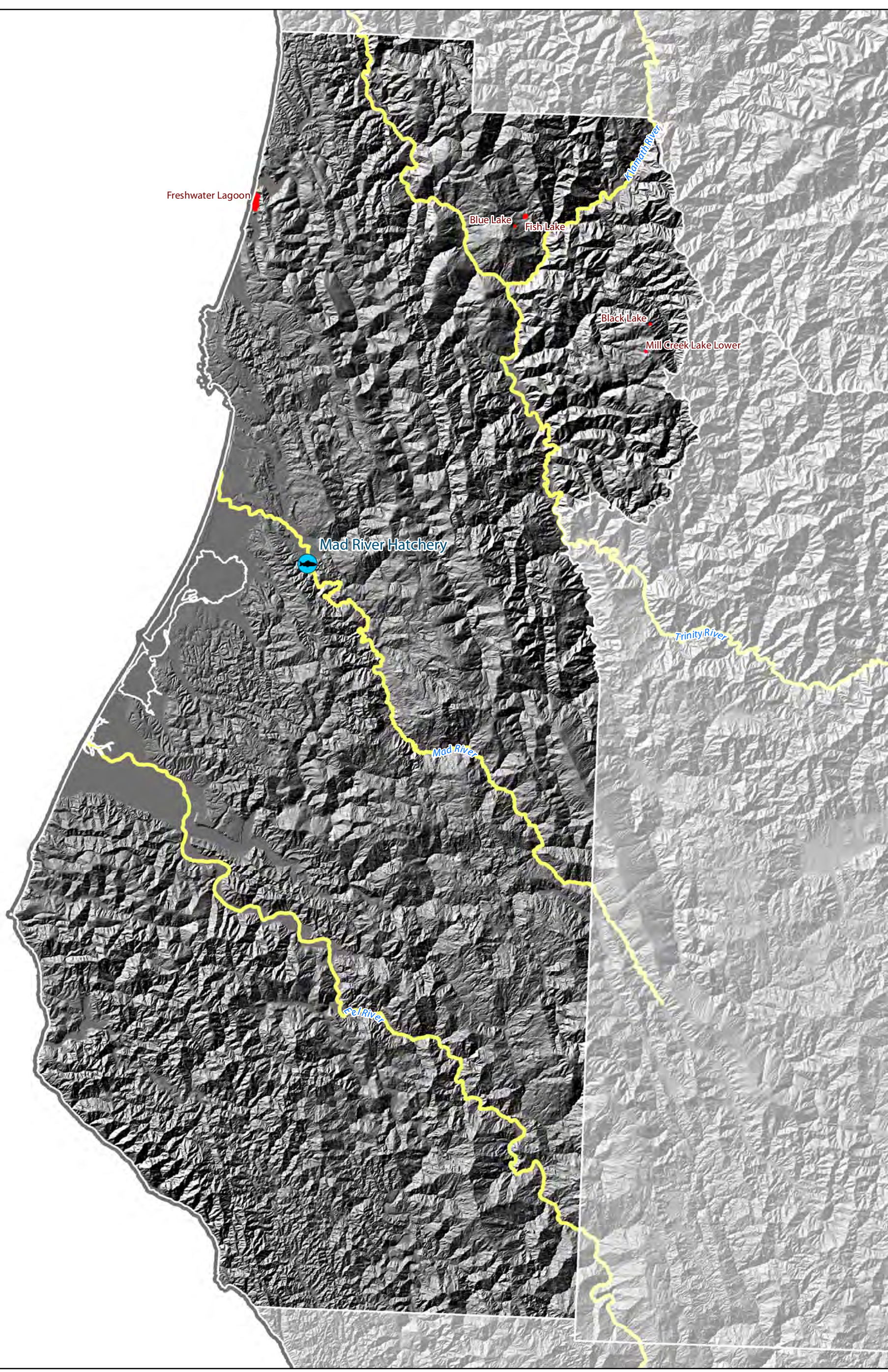
-  Hatchery
-  Anadromous Release Waters
-  Anadromous Release Waters
-  Inland Release Waters







0 3 6 Miles

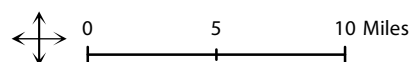


G:\PROJECTS\CAL_DFG\00264_08\MAPDOC\PLANTING_COUNTY_FIGURES\HUMBOLDT.MXD ME (05-05-09)



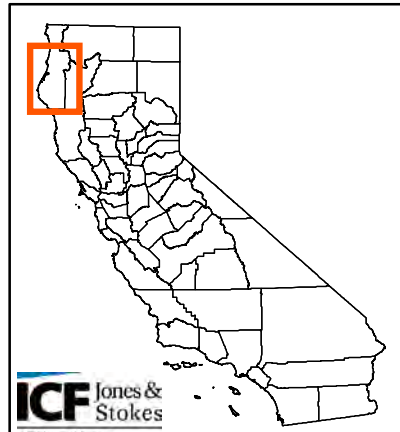
Humboldt County

-  Hatchery
-  Anadromous Release Waters
-  Anadromous Release Waters
-  Inland Release Waters



Number of unique trout planting locations within the county:
5

Number of unique anadromous planting locations within the County:
4







ICF Jones & Stokes
an international company

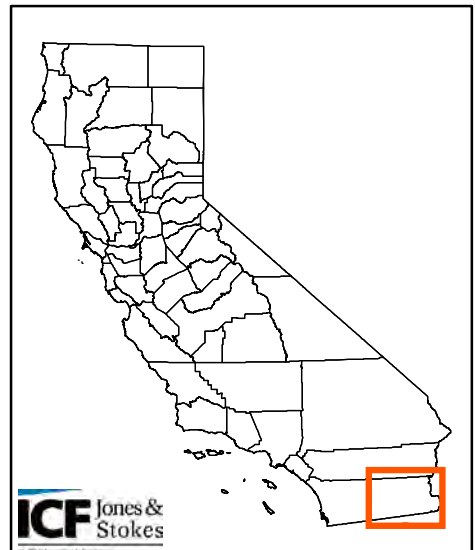
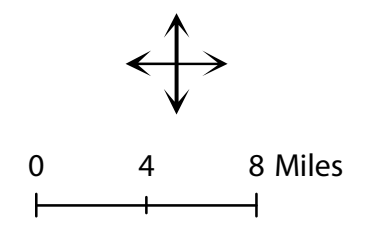
Imperial County

Number of unique trout planting locations within the county:
2

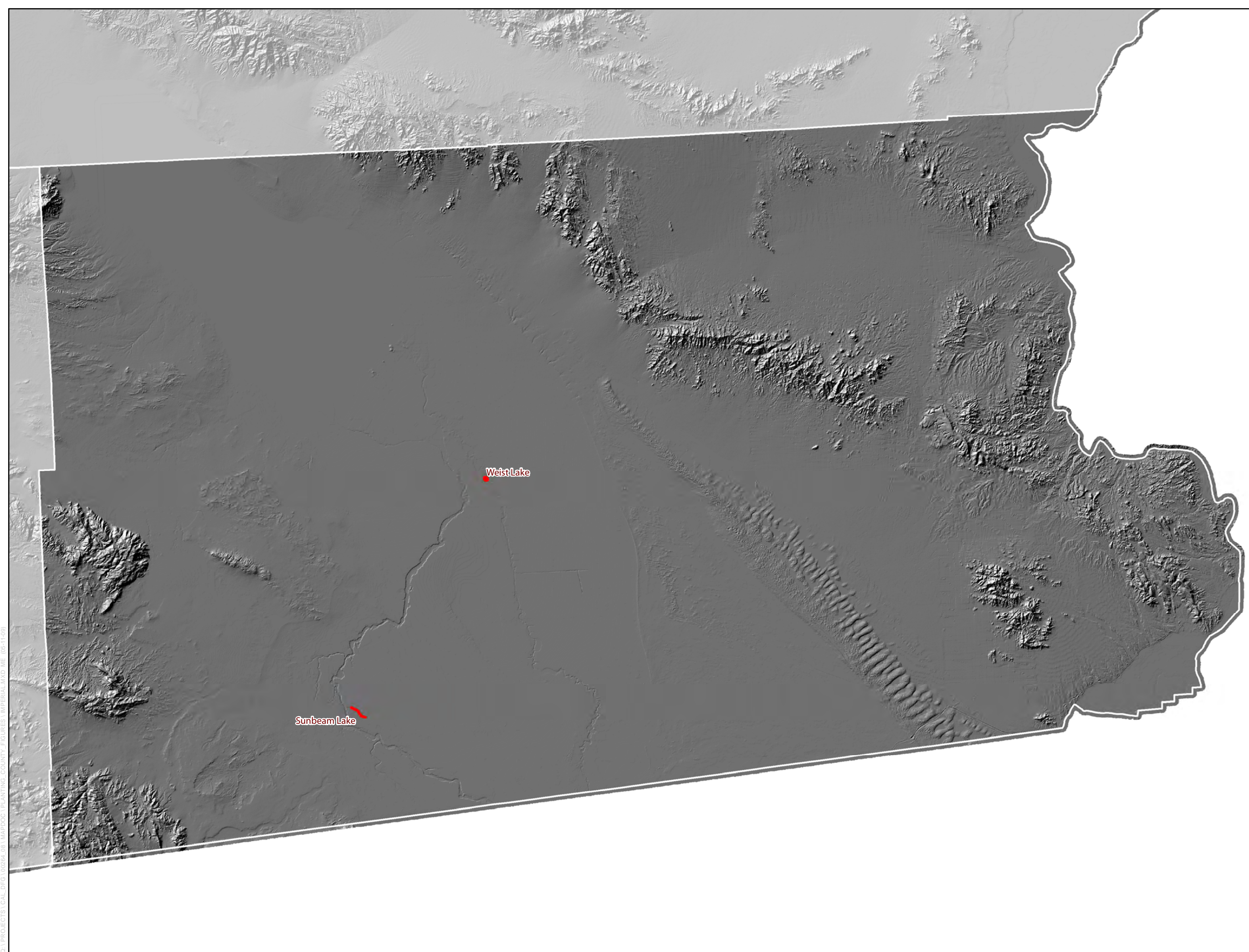
Number of unique anadromous planting locations within the County:
0

Legend

-  Hatchery
-  Anadromous Release Waters
-  Anadromous Release Waters
-  Inland Release Waters



Q:\PROJECTS\CAL_DFG\02264_08\MAPDOC\PLANTING_COUNTY_FIGURES\IMPERIAL.MXD ME (05-11-09)







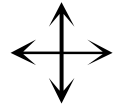
Northern Inyo County

Number of unique trout planting locations within the county:
45

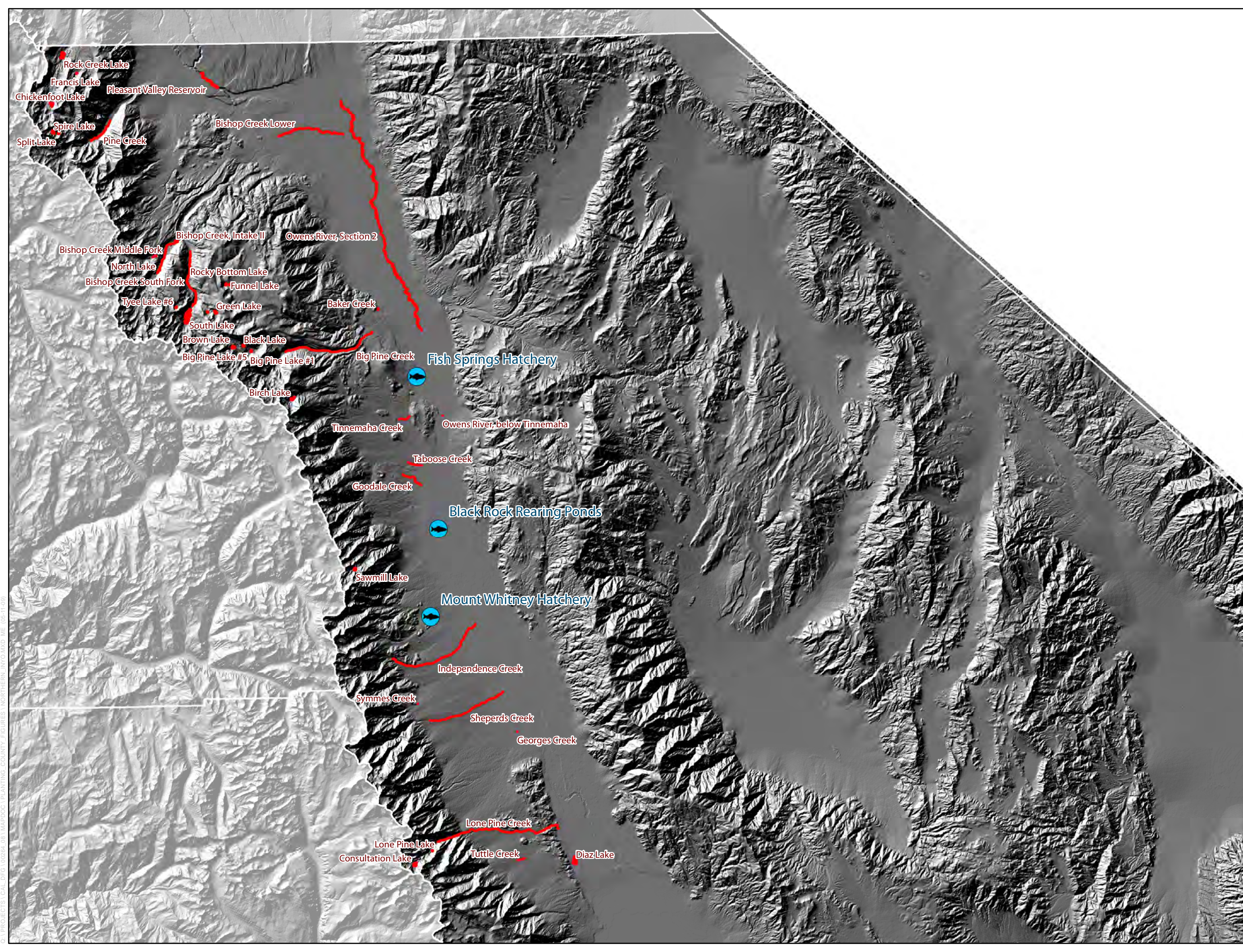
Number of unique anadromous planting locations within the County:
0

Legend

-  Hatchery
-  Anadromous Release Waters
-  Anadromous Release Waters
-  Inland Release Waters



0 4 8 Miles







C:\PROJECTS\1_CAL_DFG\10264_08_MAPDOC\PLANTING_COUNTY_FIGURES\NORTHERN_INYO.MXD (05-11-09)

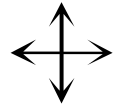
Southern Inyo County

Number of unique trout planting locations within the county:
45

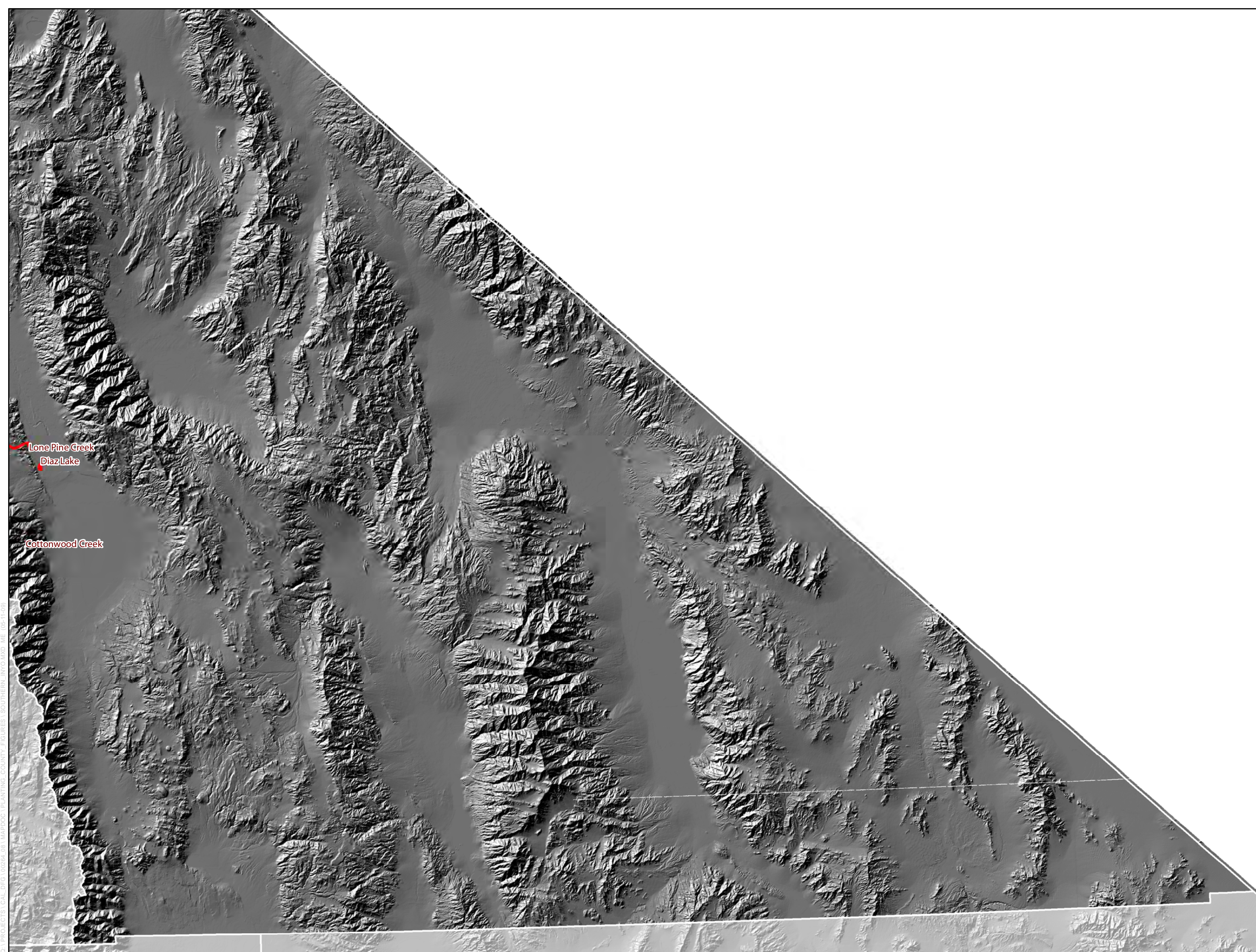
Number of unique anadromous planting locations within the County:
0

Legend

-  Hatchery
-  Anadromous Release Waters
-  Anadromous Release Waters
-  Inland Release Waters



0 5 10 Miles





C:\PROJECTS\CAL_DFG\10264_08\MAPDOC\PLANTING_COUNTY_FIGURES\SOUTHERN_INYO.MXD (05-11-09)

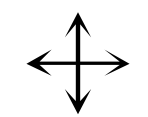
Kern County

Number of unique trout planting locations within the county:
13

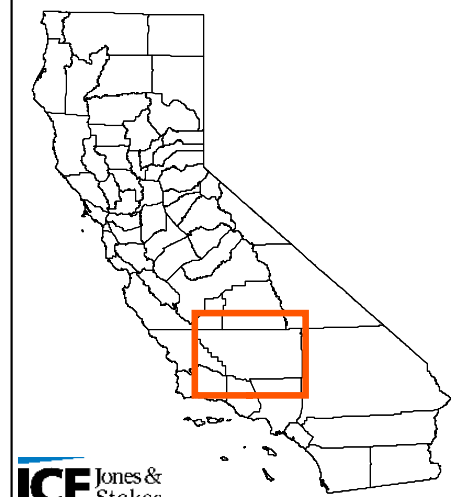
Number of unique anadromous planting locations within the County:
0

Legend

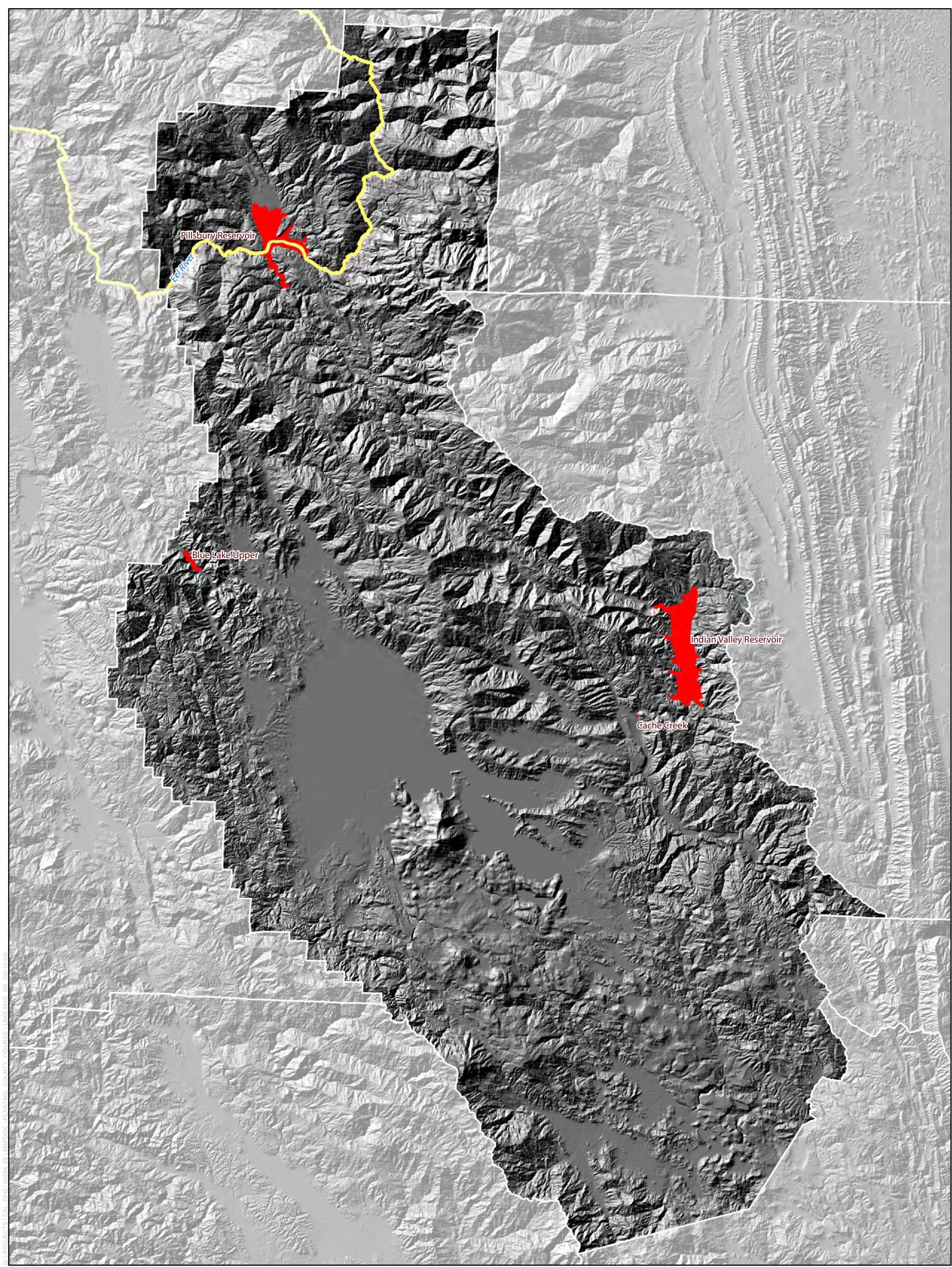
-  Hatchery
-  Inland Release Waters



0 5 10 Miles







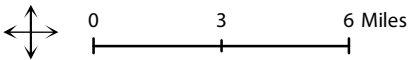
Q:\PROJECTS\CAL_DFG\00284_08\MAPDOC\PLANTING_COUNTY_FIGURES\KERN.MXD ME 05-11-09



G:\PROJECTS\CAL_DFG\100264_08_1\MAPDOC\PLANTING_COUNTY_FIGURES\LAKE.MXD, ME 05-11-09

Lake County

-  Hatchery
-  Anadromous Release Waters
-  Anadromous Release Waters
-  Inland Release Waters

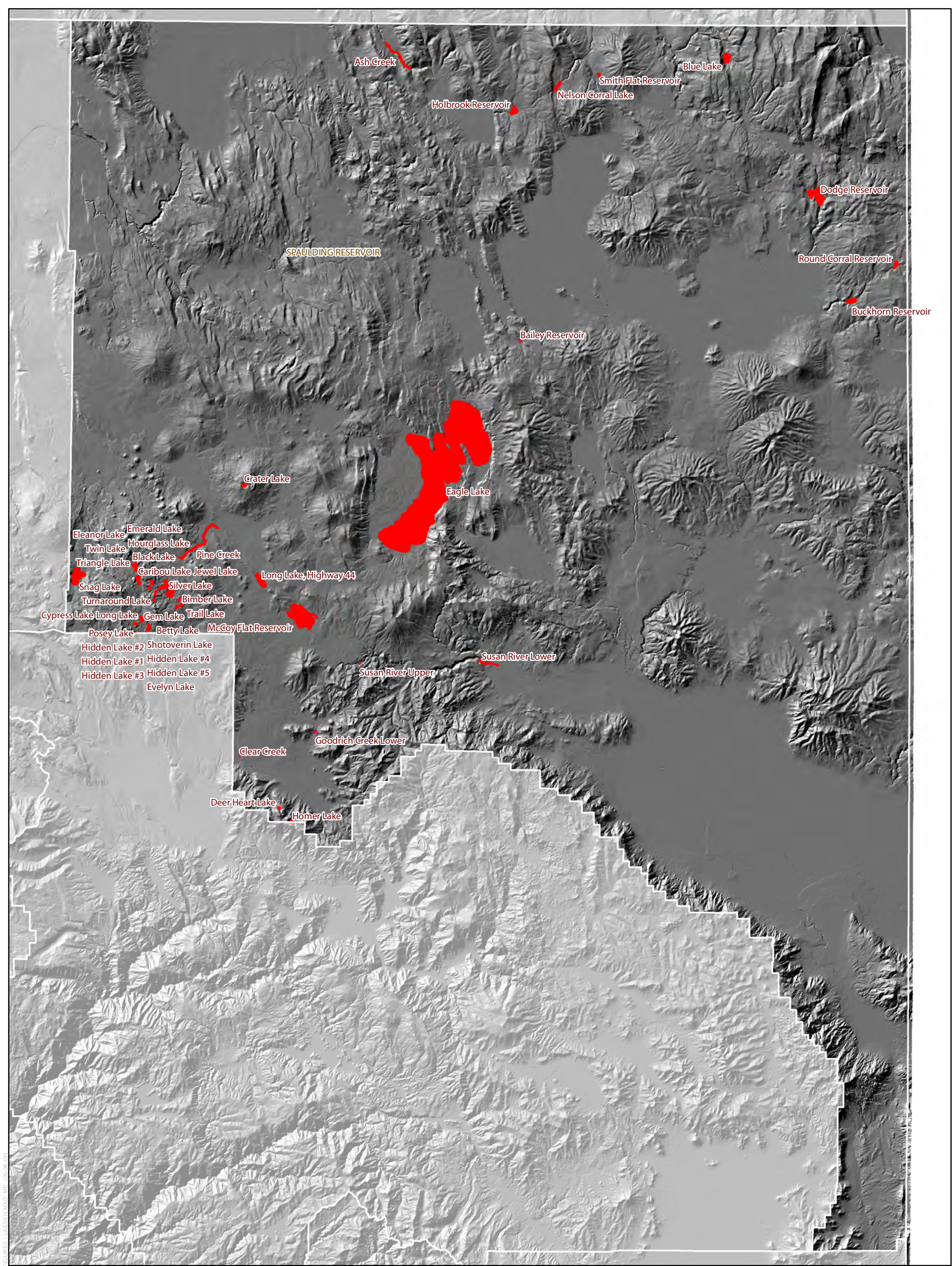


Number of unique trout planting locations within the county:
4





Number of unique anadromous planting locations within the County:
1



ICF Jones & Stokes
an environmental company

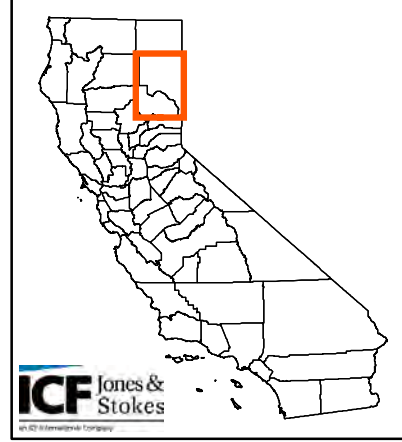
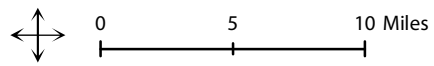


Lassen County

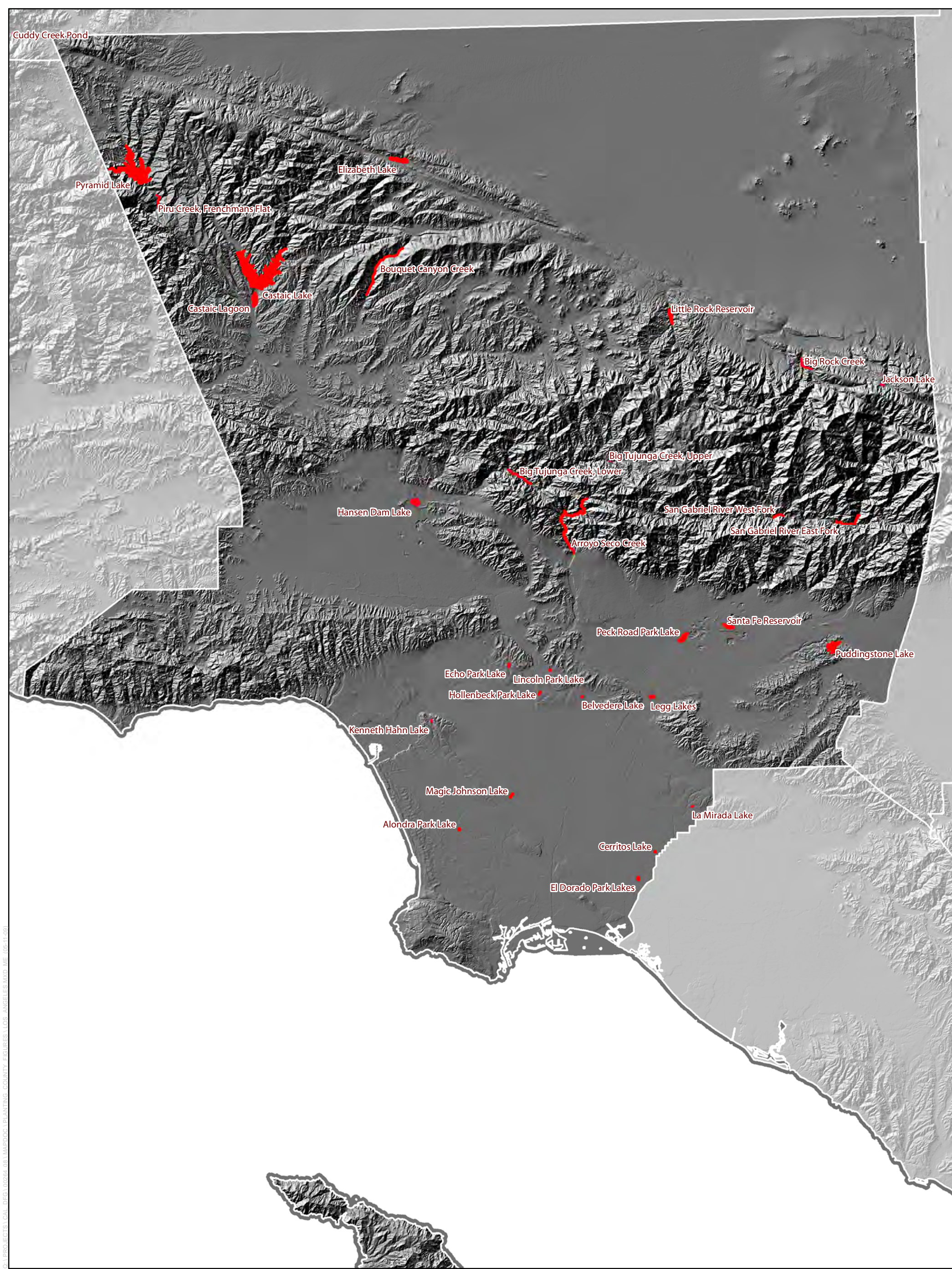
-  Hatchery
-  Anadromous Release Waters
-  Anadromous Release Waters
-  Inland Release Waters

Number of unique trout planting locations within the county:
47

Number of unique anadromous planting locations within the County:
0







Q:\PROJECTS\CAL_DFG\02264_081\MAPDOC\PLANTING_COUNTY FIGURES\LASSEN.MXD_ME (05-06-09)



G:\PROJECTS\CAL_DFG\00264_08\1_MAPDOC\PLANTING_COUNTY_FIGURES\LOS_ANGELES.MXD_ME_05-11-09

Los Angeles County

-  Hatchery
-  Anadromous Release Waters
-  Anadromous Release Waters
-  Inland Release Waters



0 5 10 Miles

Number of unique trout planting locations within the county:
33

Number of unique anadromous planting locations within the County:
0



ICF Jones & Stokes
© 2009 International Company