

BURKE RANCH CONSERVATION BANK **SERVICE AREAS**

The Bank has three service areas, independently defined for vernal wetlands preservation, California tiger salamander, and avian species:

Vernal Wetlands

The vernal pool service area is the Solano-Colusa Vernal Pool Region as defined in the California Department of Fish and Game California Vernal Pool Assessment Preliminary Report (Exhibit C.1). This vernal pool service area is consistent with the service area approved for the Elsie-Gridley Conservation Bank (USFWS 2007), which occurs within a mile of the Bank.

California Tiger Salamander

The CTS service area (Exhibit C.2) is a subsection of the population range of CTS as defined by the genetic and phylogeny study conducted by Shaffer et al (2004). The service area is roughly the northern half of the Central Valley Unit, and is consistent with the service area approved for the Elsie-Gridley Conservation Bank (USFWS 2007), which occurs within a mile of the Bank.

Avian Species

The service area for avian species is the boundary of the Solano Draft Habitat Conservation Plan. This boundary generally corresponds to the Solano County boundary, with a minor inclusion of Yolo County in the northeast. The Swainson's hawk service area is Valley Floor Grassland areas (Exhibit C.3) as described in the Final Administrative Draft Solano HCP (dated June 15, 2009):

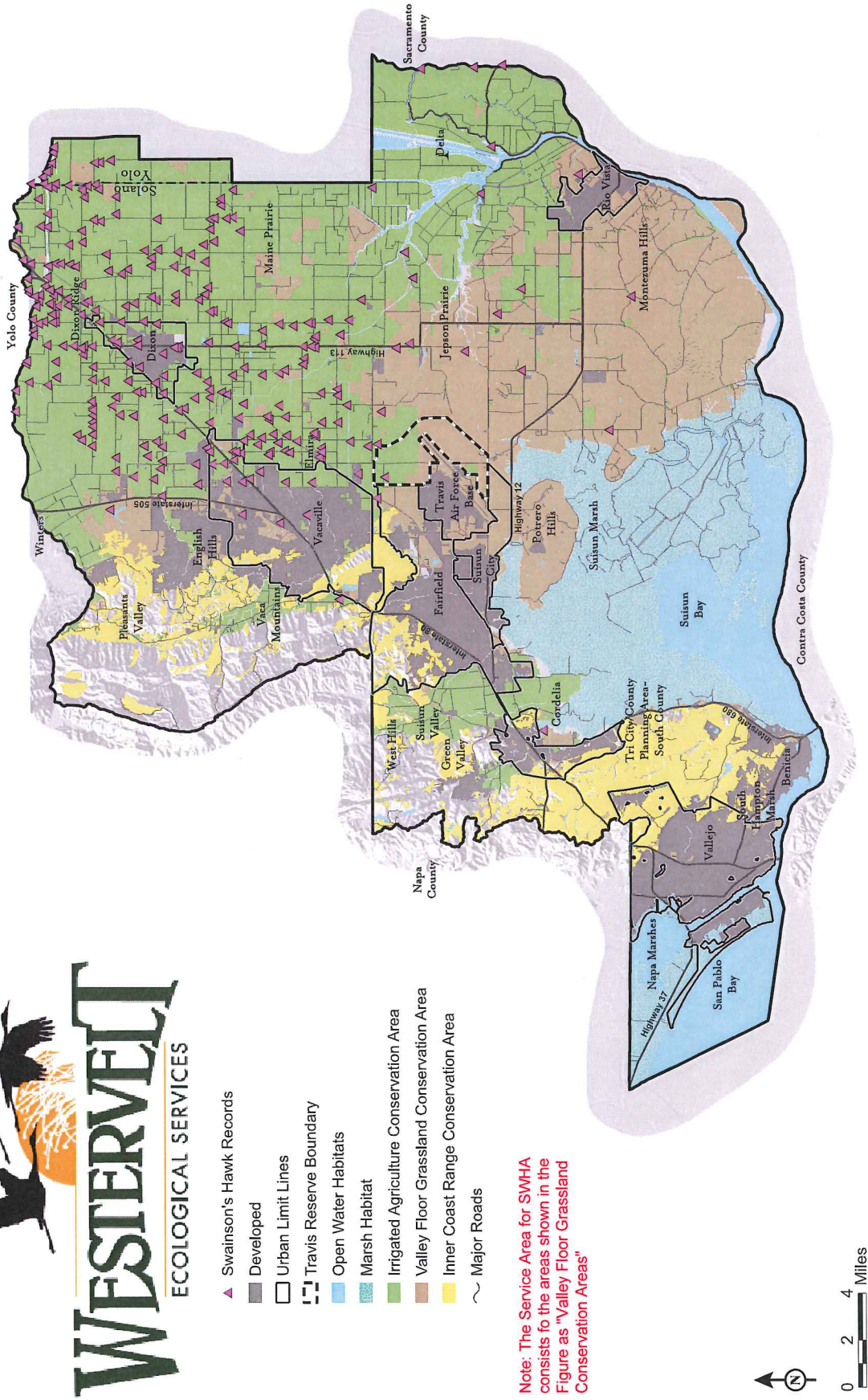
The Valley Floor Grasslands are dominated by two, typically intermixed associations: vernal pool grasslands and grasslands associated with the low hills (Montezuma Hills and Potrero Hills) and upper terraces along the valley floor.

Exhibit C.3 - Burke Ranch Conservation Bank Swainson's Hawk Service Area



- ▲ Swainson's Hawk Records
- Developed
- Urban Limit Lines
- ⋯ Travis Reserve Boundary
- Open Water Habitats
- Marsh Habitat
- Irrigated Agriculture Conservation Area
- Valley Floor Grassland Conservation Area
- Inner Coast Range Conservation Area
- ~ Major Roads

Note: The Service Area for SMHA consists to the areas shown in the Figure as "Valley Floor Grassland Conservation Areas"



Source: Draft Solano Multispecies Habitat Conservation Plan, Version 2.2, Dated June 15, 2009