

# 2010 Volunteer Mohave Ground Squirrel Studies Summary for the MGS TAG Meeting

September 2010



**ECORP Consulting, Inc.**  
ENVIRONMENTAL CONSULTANTS

# Volunteer MGS Studies

---

Where did the idea come from?



## Purpose and Need

- ◆ With Exception of DOD Studies Virtually all MGS Presence/Absence Data are based on Surveys for Development Projects leaving much of the Species' Range Unsurveyed
- ◆ Take Advantage of June Gap in the Survey Protocol to gather Additional Data in Reproductive Years

# Ad-Hoc Volunteer Coordinating Committee

- ◆ Don Mitchell, ECORP Consulting, Inc.
- ◆ Russell Scofield, BLM
- ◆ Scott Osborn, CDFG
- ◆ Bronwyn Hogan, CDFG
- ◆ Phil Leitner, ESRP
- ◆ Larry LaPre, BLM

## Survey Types

- ◆ Trapping (with tissue sampling where appropriate)
- ◆ Motion-Triggered Camera Stations
- ◆ Visual/Auditory Transects

# Targeted Trapping Locations for 2010

- ◆ Hinkley to Kramer Junction (MGS/RTGS Contact Zone)
- ◆ Kramer to Mojave
- ◆ Boron (North of EAFB but South of Hwy 58)
- ◆ South of EAFB
- ◆ North of Searles
- ◆ Near Weldon

# Trapping Site Selection

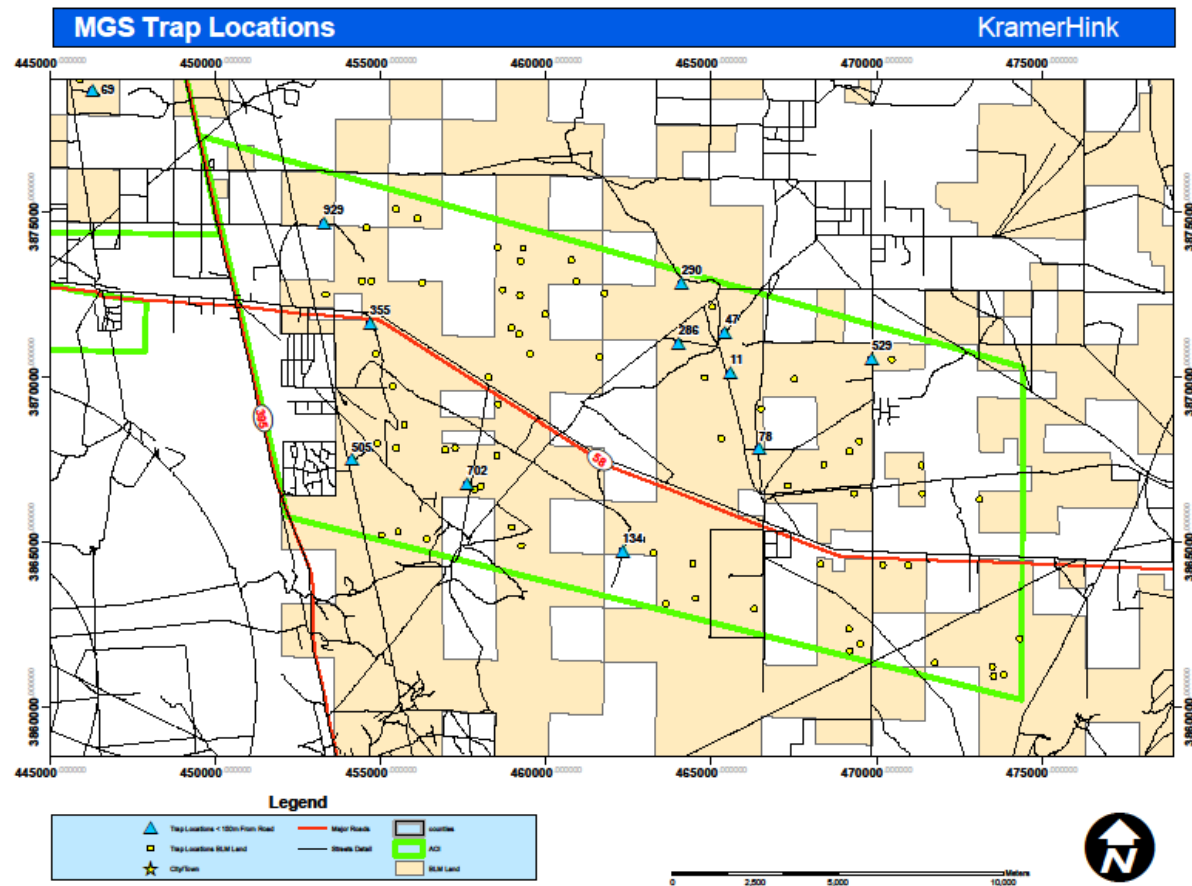
- ◆ All sites on BLM Land
- ◆ 1,000 Random Points Generated
- ◆ Filter Applied for Accessibility (within 150m of Passable Paved or Dirt Roads)
- ◆ Boron and North of Searles (special cases)
  - Only one small parcel of BLM land in this area
  - North of Searles sites placed at locations of 1990s records in order to obtain tissue samples
- ◆ Surveyor Choice



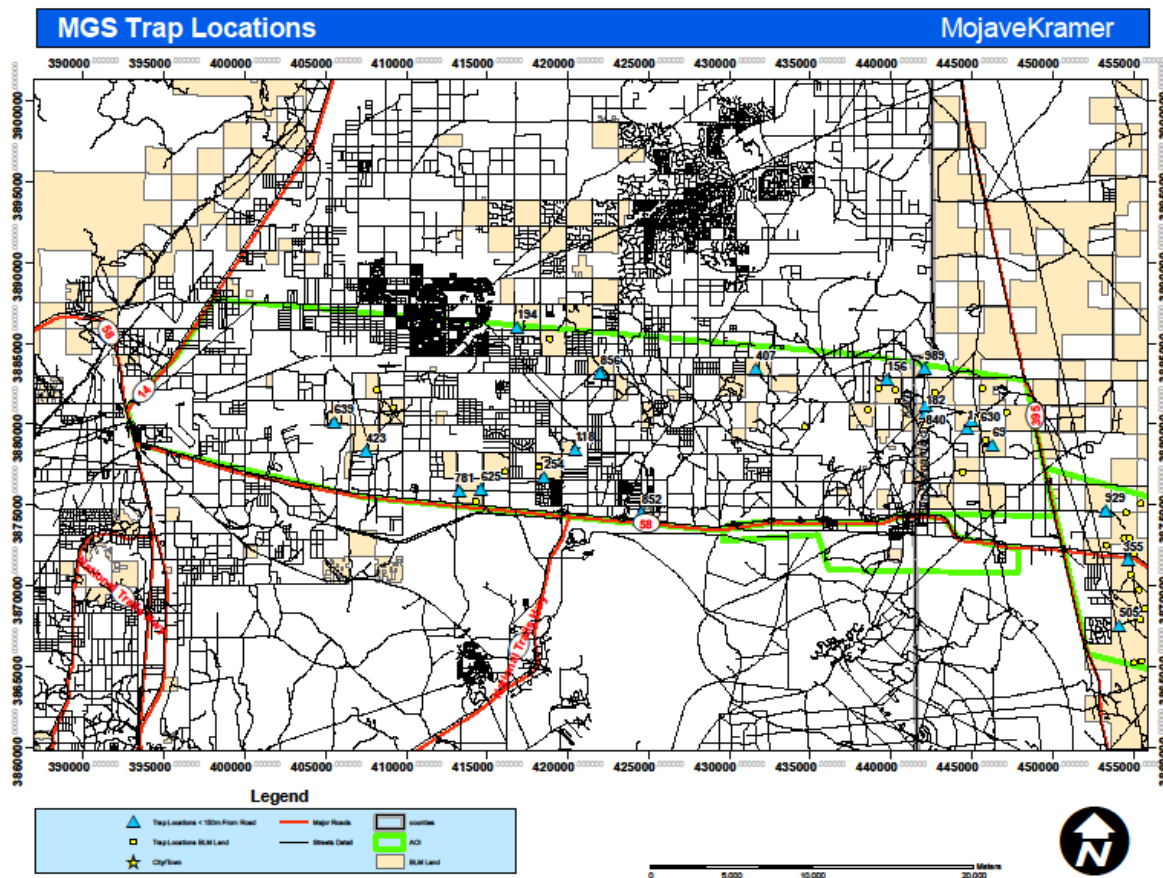
# Trapping Site Selection

- ◆ Grid points in each survey area were divided by the number of trappers assigned to each survey area and surveyors given their choice of 2-6 grid locations based on their preliminary field visits.

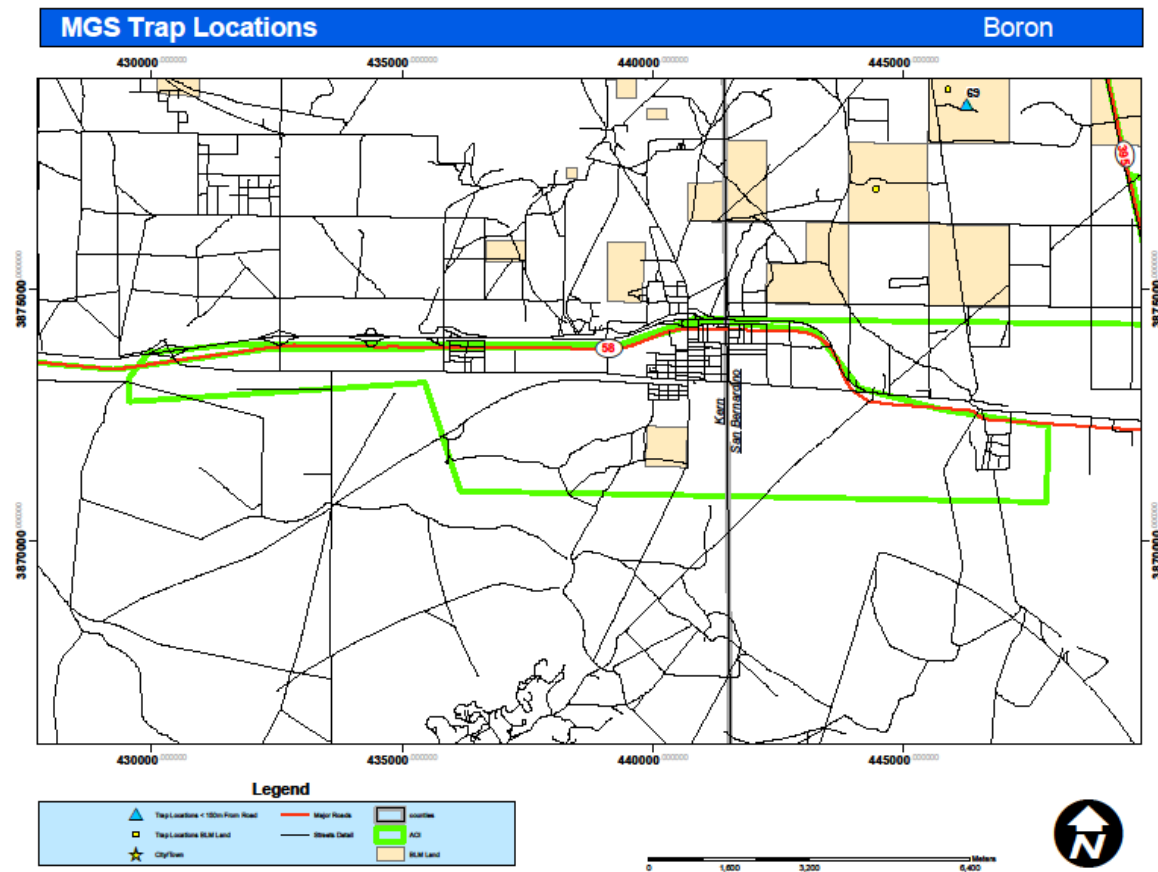
# Hinkley to Kramer Junction



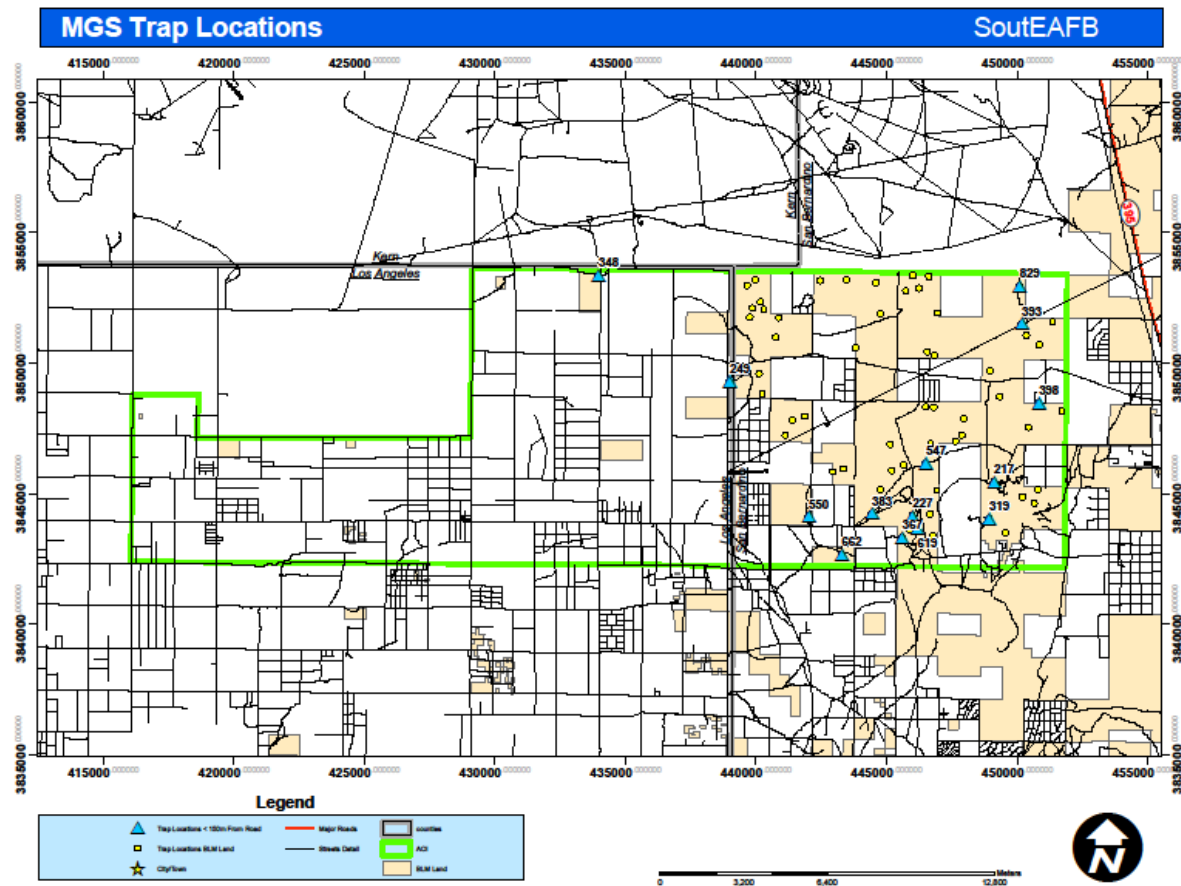
# Kramer to Mojave



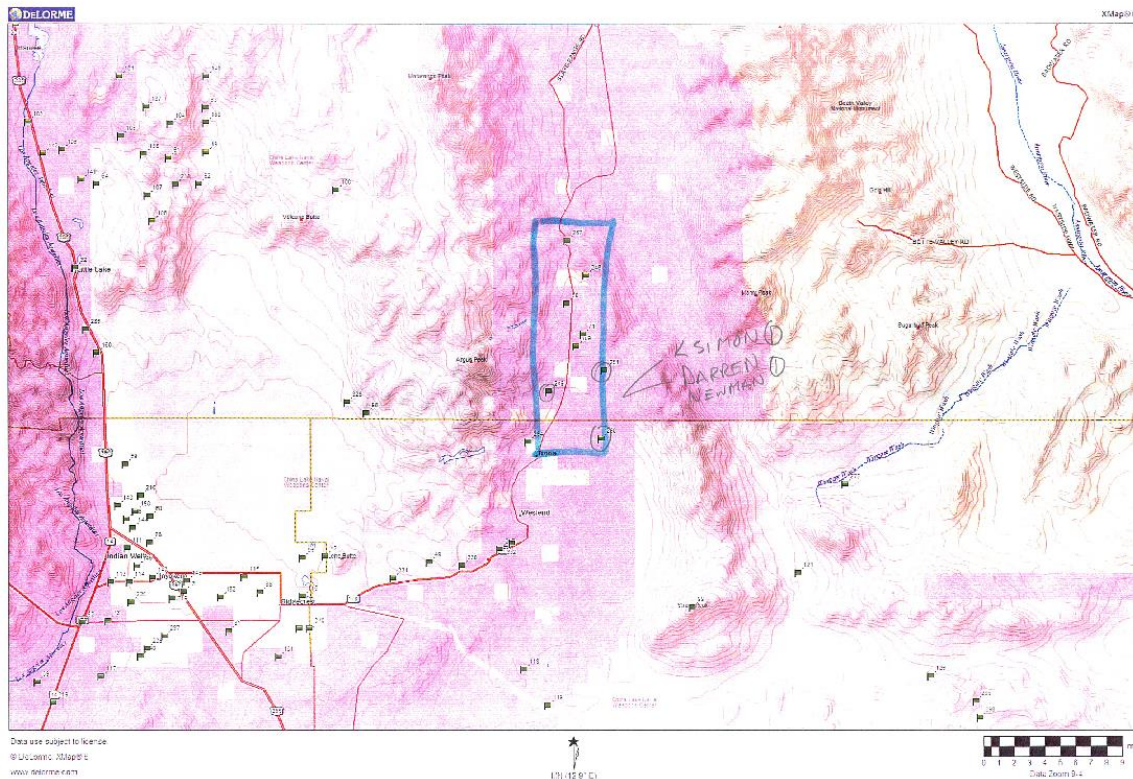
# Boron



# South of EAFB



# North of Searles Lake



# Preliminary Results

- ◆ 7 grids trapped for five days
  - 5 in Hinkley to Kramer Area
  - 1 in Kramer to Mojave Area
  - 1 in North of Searles Area
- ◆ 7 Motion-Triggered Camera Stations run for 3-5 days (all in Hinkley to Kramer Area)

# Preliminary Results

- ◆ Trapping Conducted From Mid May To Early July
- ◆ Vegetation Data Collected at Each Grid
- ◆ All Grids Trapped were in Suitable Habitat
- ◆ MGS Captured only at North of Searles Grid
- ◆ No Round Tailed GS Captures
- ◆ No MGS or RTGS Detected By Cameras



# Preliminary Results

## North of Searles Grid

- ◆ Choosing the site
- ◆ Catching MGS??
- ◆ Check this out . . .

# Preliminary Results North of Searles Grid



# Preliminary Results North of Searles Grid





# Preliminary Results North of Searles Grid



# Preliminary Results North of Searles Grid



# Preliminary Results North of Searles Grid



# Still to Come

---

- ◆ Data to CDFG & GIS Staff at MDEIP
- ◆ Results of Genetic Analysis From North of Searles Samples
- ◆ 2011 & Beyond?

# Thanks!

## ◆ Surveyors

- Kathy Simon
- Leo Simone
- Mark Allaback
- Steve Montgomery
- Phil Brylski
- Caleb Murphy
- Brad Haley
- Kristen Mobraaten
- Don Mitchell

## GIS

- Fon Duke
- Ryan Schulz

## Assistants

- Lee Ripma
- Cara Snellen
- Rachel Woodard

- ◆ Thanks also to all the others who tried to help but couldn't due to other commitments or our logistical difficulties.



# Questions??

