

MGS Projects

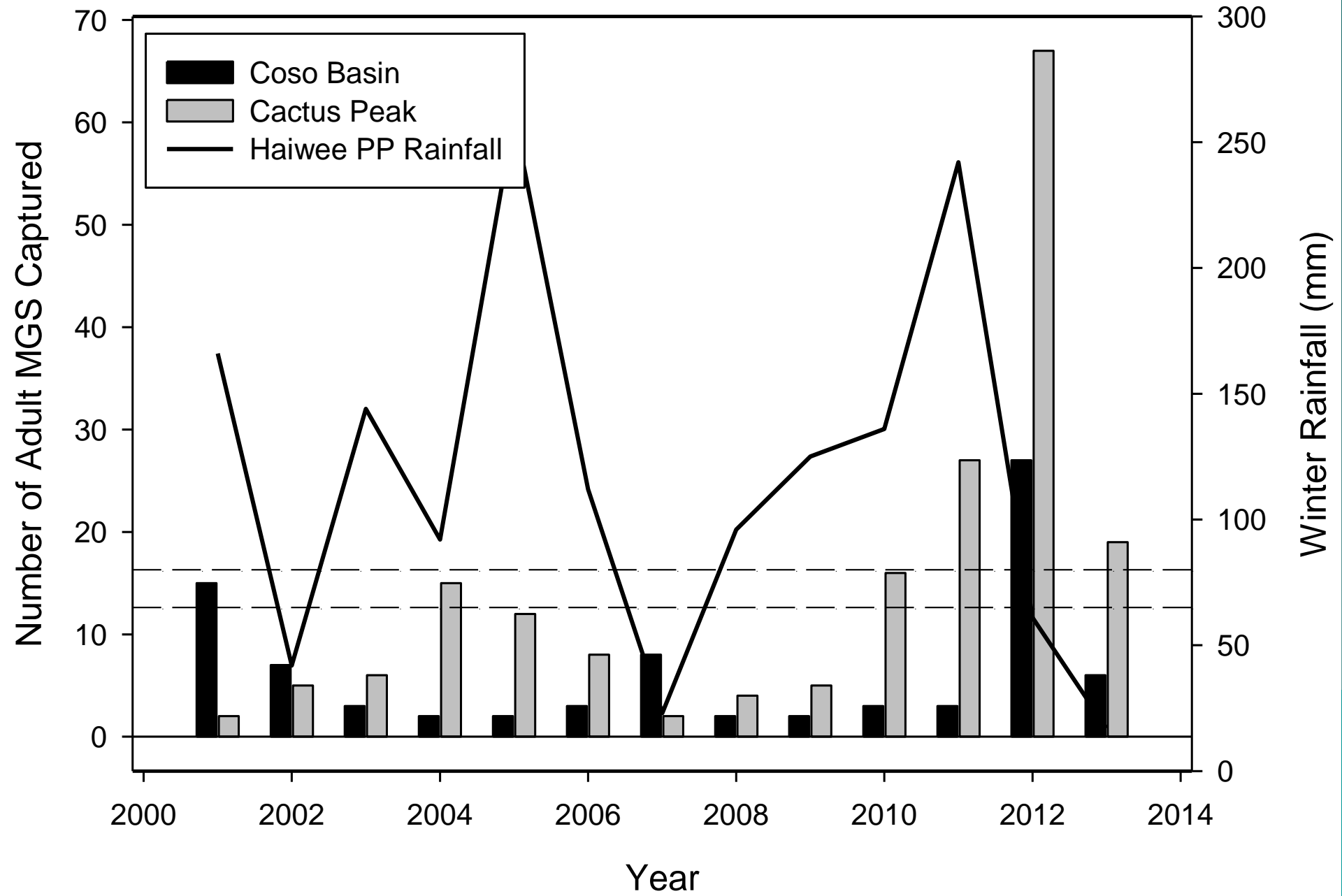
2014

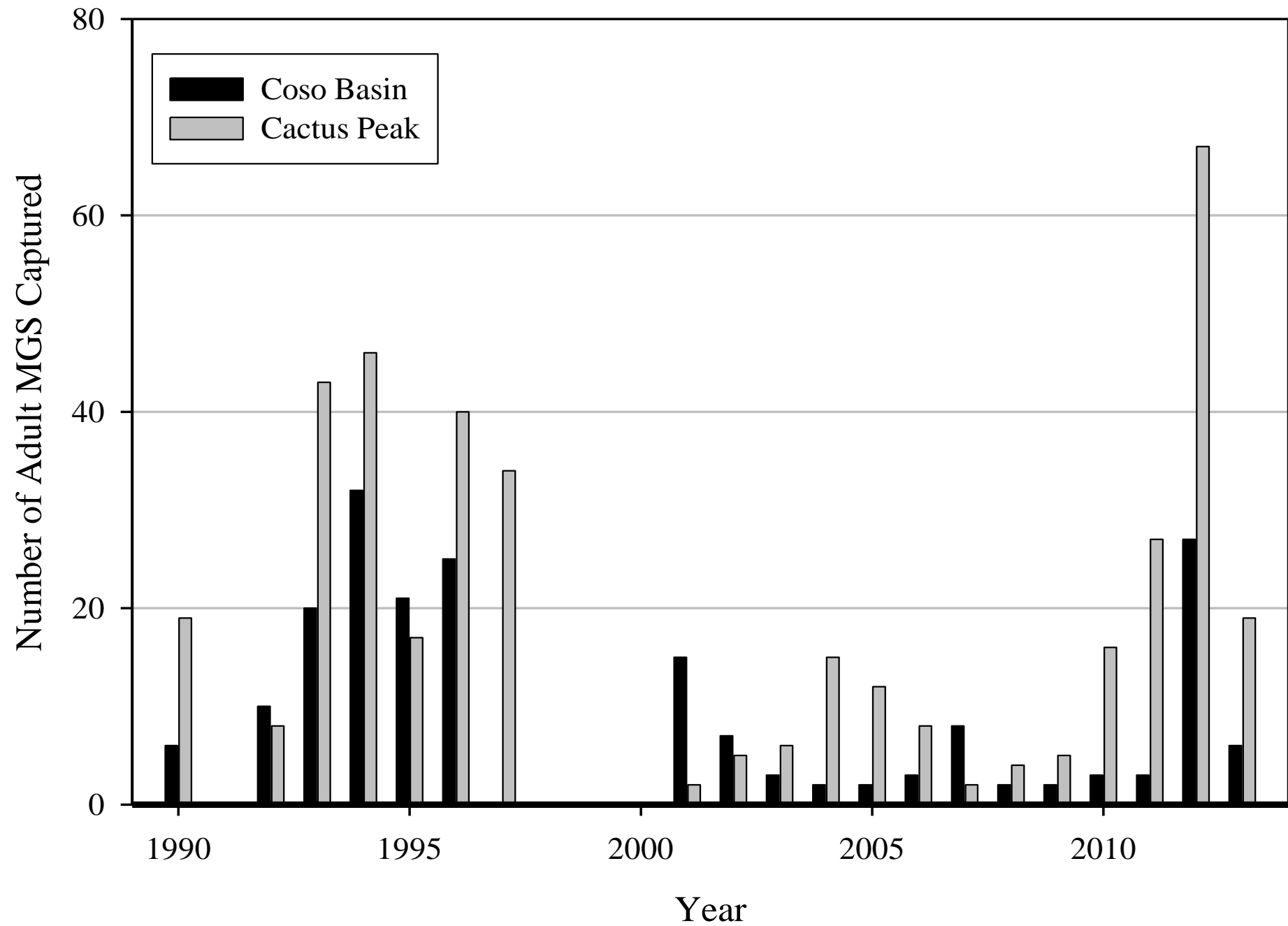
A stylized silhouette of a mountain range in a darker shade of teal, located in the bottom right corner of the slide.

COSO MONITORING

2014

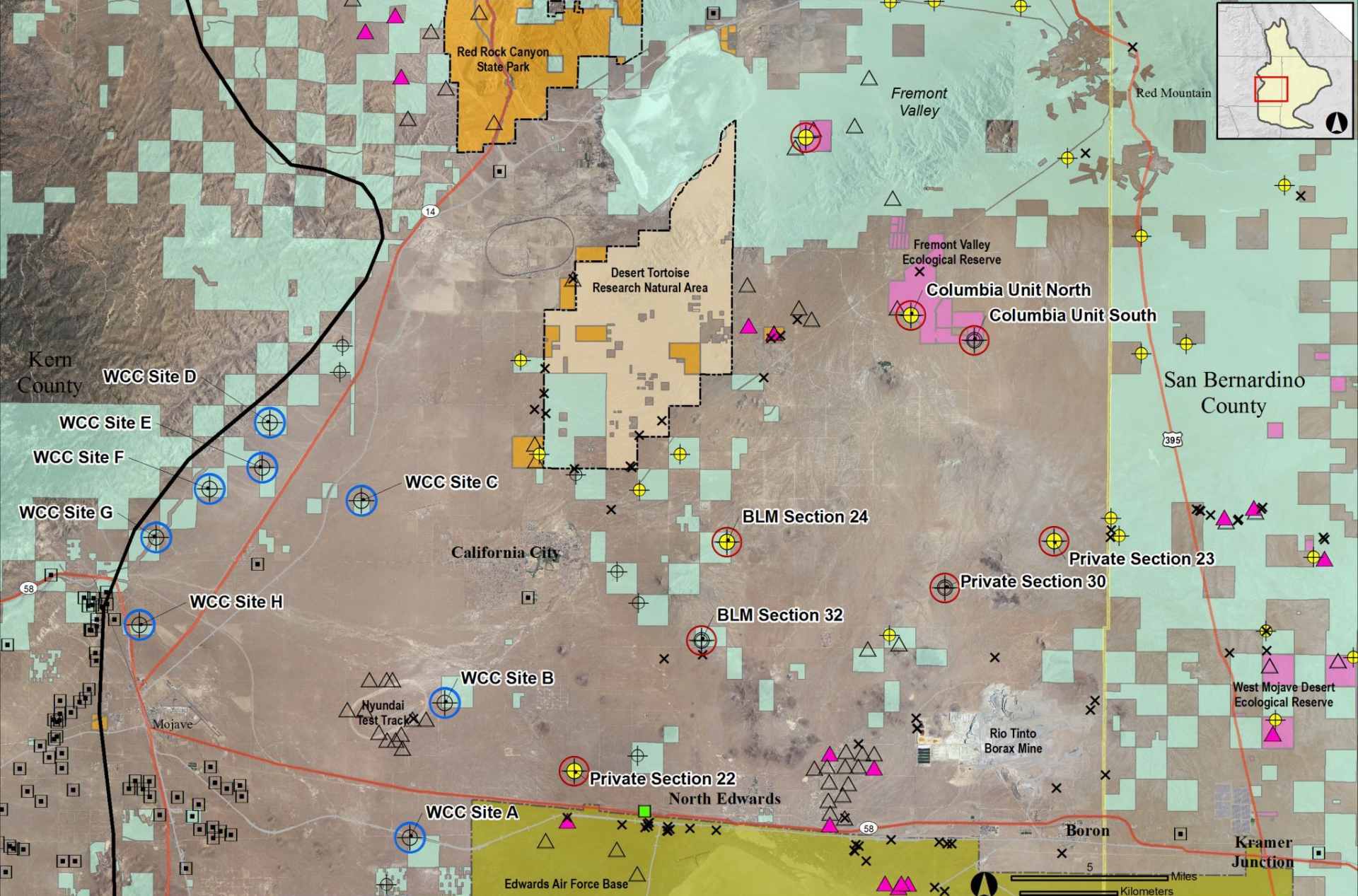
A stylized silhouette of a mountain range in a darker shade of teal, located in the bottom right corner of the slide.





CAMERA TRAPPING

- ◆ Last year, 7 sites sampled east and south of California City
- ◆ This year, camera study planned west of Cal City toward Mojave
- ◆ Total of 8 sites on scattered BLM parcels
- ◆ Question: is this area suitable for renewable energy development?



MGS Studies California City Region 2001-2014

MGS Range Boundary (thick black line)

Incidental observations	Regional surveys	Protocol grids	2011 Camera study	2013 Camera Study	2014 Camera Study
△ Not detected	□ Not detected	⊕ Not detected	⊕ Not detected	⊕ Not detected	⊕ Camera station
× Present	▲ Present	■ Present	⊕ Present	⊕ Present	

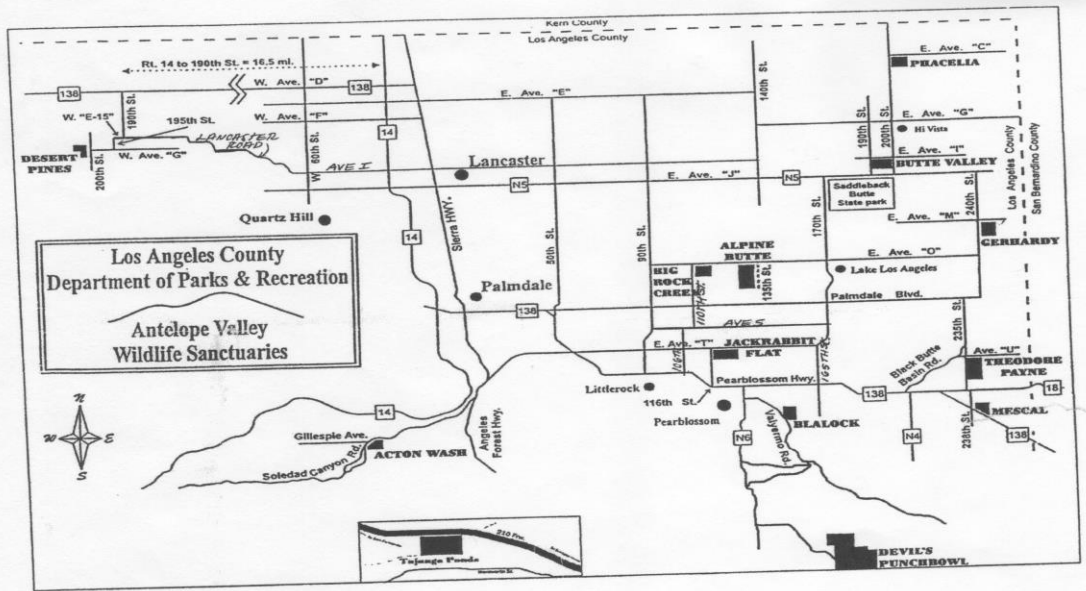
Light blue	Bureau of Land Management Public Land (BLM)
Orange	National Conservation Area (BLM)
Pink	CDFW Ecological Reserve
Yellow	Other State of California lands
Green	Military

Scale: 5 Miles / 5 Kilometers

VOLUNTEER TRAPPING

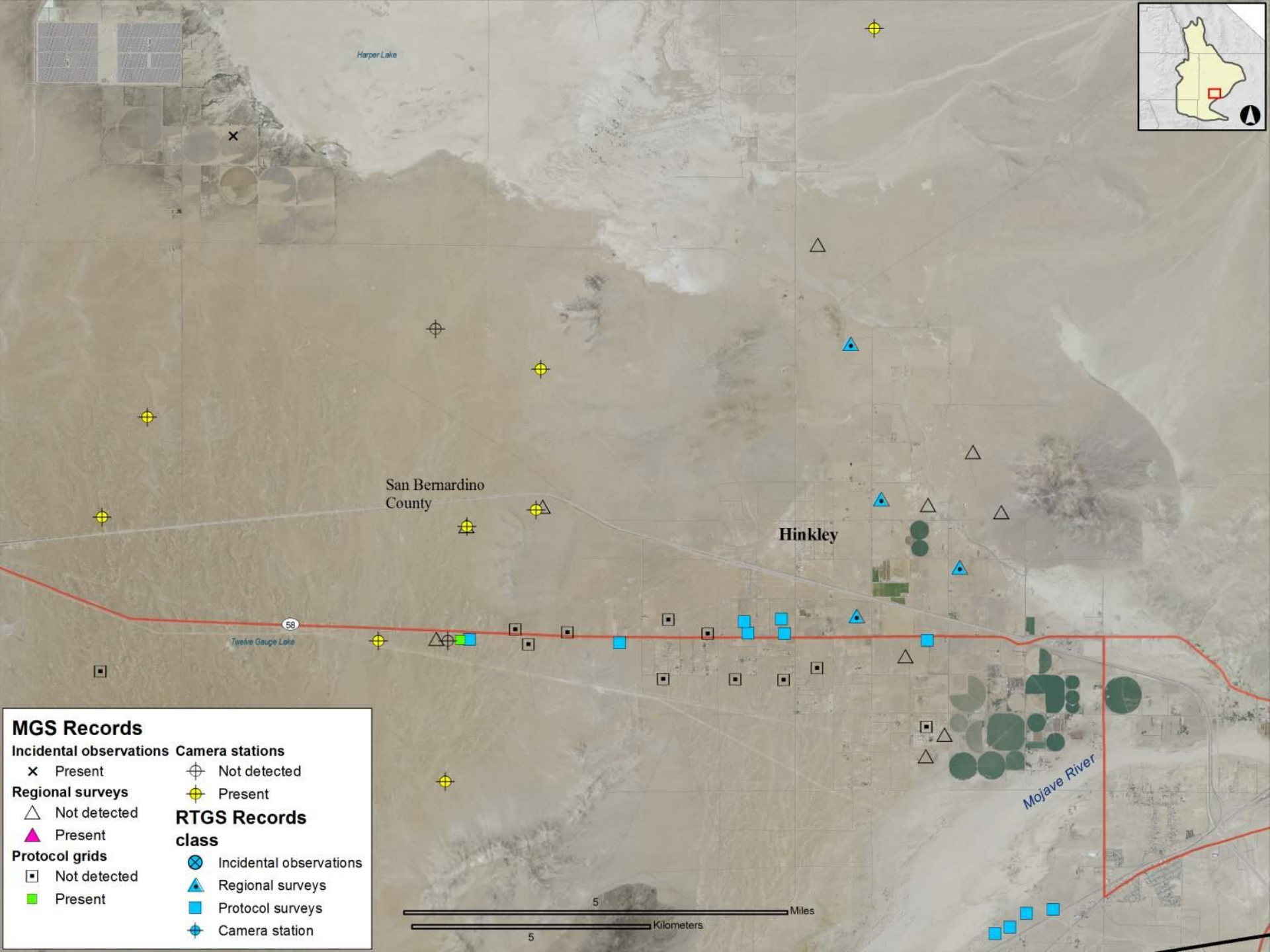
- ◆ Desert portion of LA County is another blank spot on MGS map
- ◆ No MGS records since 1991 (x-EAFB)
- ◆ Mostly private land but state and county parklands could be surveyed
- ◆ Ed LaRue has obtained permits to trap 6 LA County parks
- ◆ BUT is 2014 a good year to survey?

661-803-1546



ANOTHER VOLUNTEER POSSIBILITY

- ◆ Careful checking of photos from 2012 camera study came up with a surprise
- ◆ Camera site about 8 mi E of Kramer Junction had both MGS and RTGS
- ◆ This was 7.5 mi W of previous RTGS record in 2007
- ◆ Are RTGS moving west at the expense of MGS?



MGS Records

Incidental observations

- × Present

Regional surveys

- △ Not detected
- ▲ Present

Protocol grids

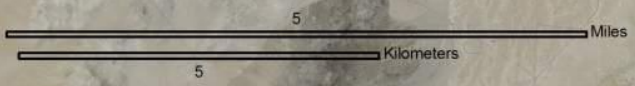
- ◻ Not detected
- Present

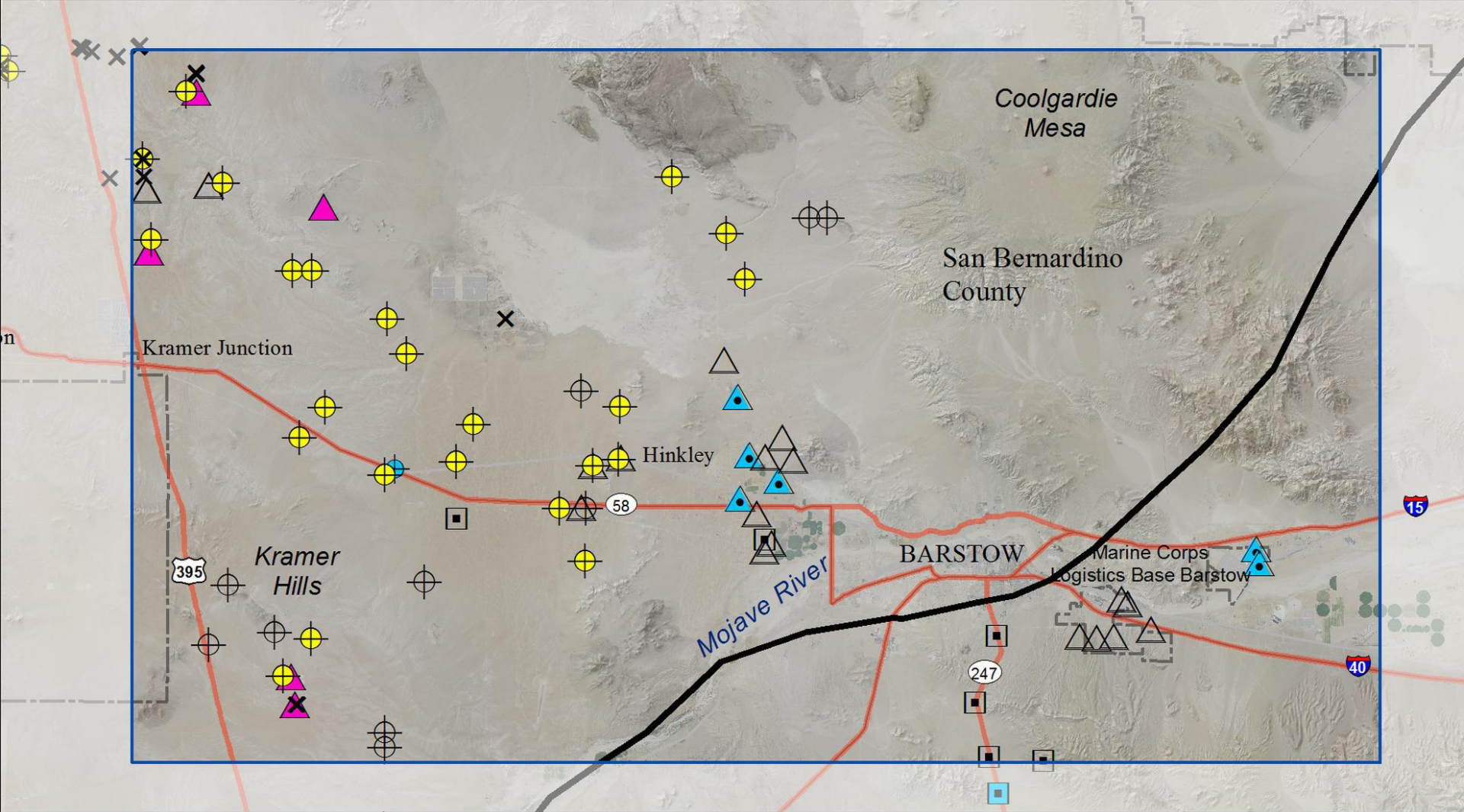
Camera stations

- ⊕ Not detected
- ⊕ Present




RTGS Records class

- ⊗ Incidental observations
- ▲ Regional surveys
- Protocol surveys
- ⊕ Camera station





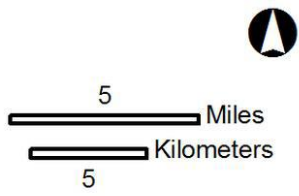


MGS Records

-  MGS Range
-  Incidental observations
-  Not detected
-  Present
-  Not detected
-  Present
-  Not detected
-  Present

RTGS Records

-  Incidental observations
-  Regional surveys
-  Protocol surveys
-  Camera station



2012-04-27 1:07:46 PM M 4/5

90°F



PC800 HYPERFIRE PRO



2012-04-27 11:27:06 AM M 2/5

91°F



HC500 HYPERFIRE



2012-04-25 10:36:58 AM M 5/5

95°F



PC800 HYPERFIRE PRO



2012-04-25 11:22:00 AM M 1/5

86°F



PC800 HYPERFIRE PRO

