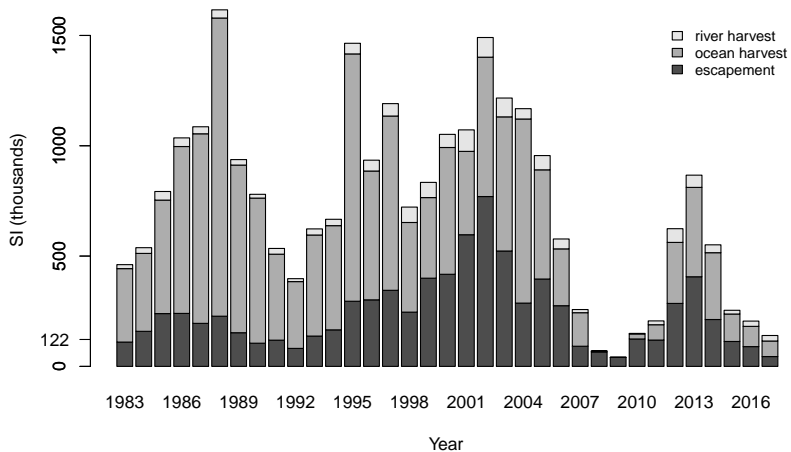
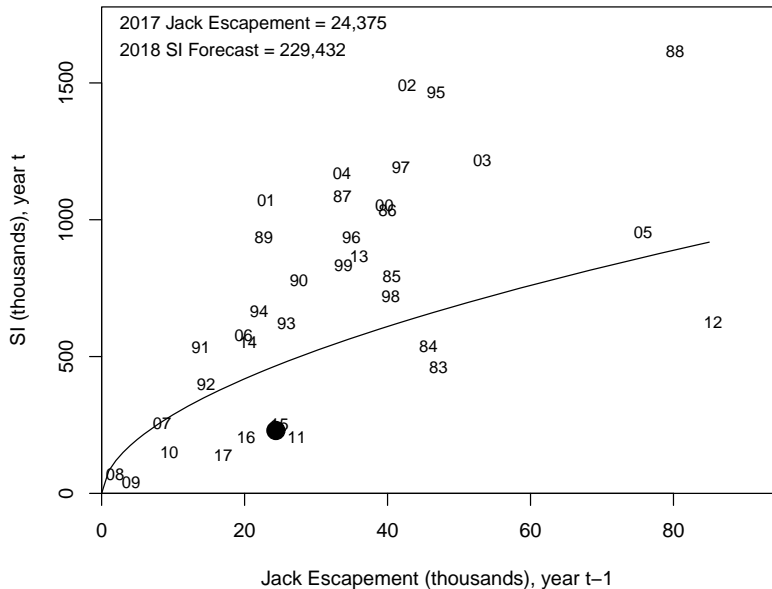


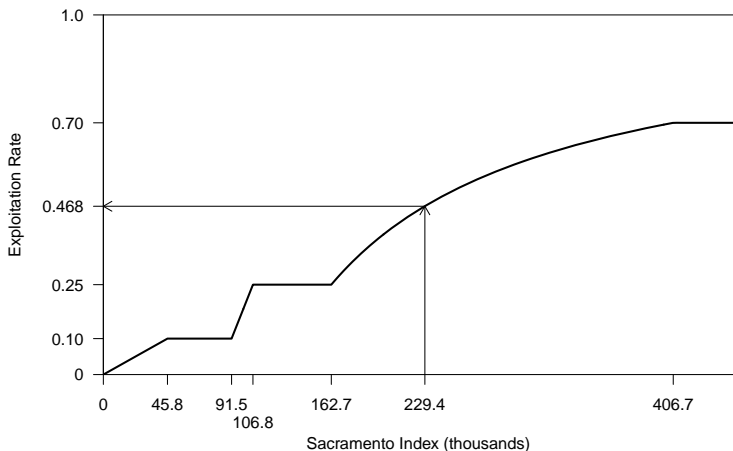
# 2017 Sacramento Index (SI): 139,997



# 2018 SI forecast: 229,432

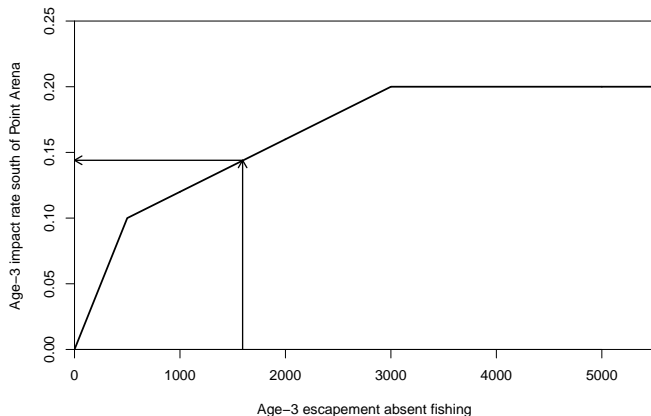


## 2018 management



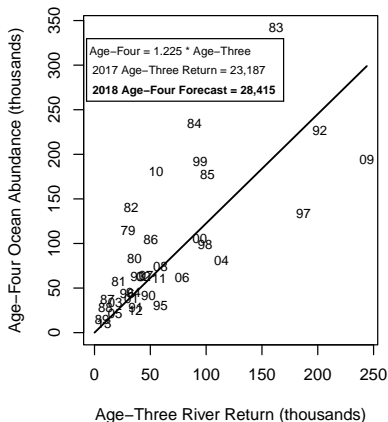
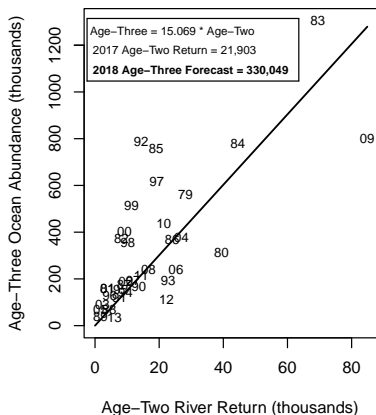
- ▶ 2018 forecast nearly equal to 2017 forecast
- ▶ Must target an escapement of at least 122,000 (46.8% exploitation rate)
- ▶ 2017 regs: preliminary escapement prediction of 134,900
- ▶ Likely to constrain 2018 fisheries

# 2018 winter Chinook management



- ▶ New control rule for 2018
- ▶ Abundance forecast: 1,594
- ▶ Maximum allowable age-3 impact rate: 14.4%
- ▶ 2017 regs: preliminary prediction of 12.6%
- ▶ Likely to constrain 2018 fisheries south of Point Arena

# 2018 Klamath abundance forecast

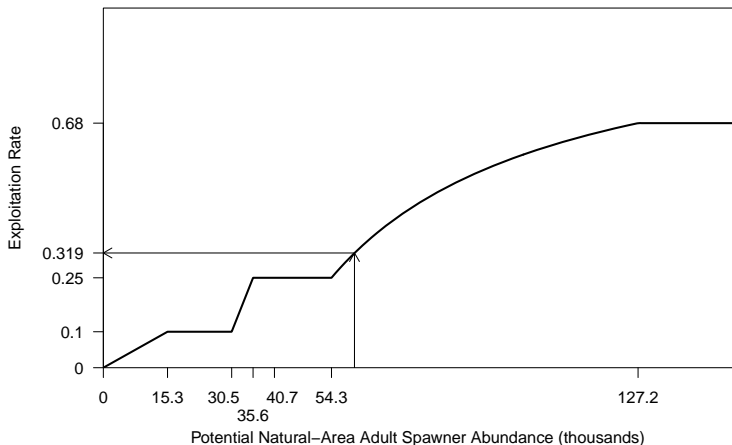


age-3: 330,049

age-4: 28,415

age-5: 767

## 2018 management



- ▶ Potential spawner abundance forecast: 59,733
- ▶ Must target an escapement of at least 40,700 (31.9% exploitation rate)

## 2018 management, contd.

- ▶ 2017 regs:
  - ▶ Tribal allocation: 50% of total harvest
  - ▶ River recreational allocation: 15.9% of non-tribal harvest
  - ▶ Natural-area adult spawners prediction: 56,500
  - ▶ Exploitation Rate: 5.4%
  
- ▶ Could constrain 2018 fisheries south of Cape Falcon, OR

## 2018 California Coastal Chinook

- ▶ Max allowable KRFC age-4 ocean harvest rate of 16%
- ▶ 2017 fisheries: preliminary prediction of 2.4%
- ▶ Could constrain 2018 fisheries