

Field Note:

Date of Survey: February 15, 2018

Written By: Scott Monday

Stream Name: Dinner Creek

LLID #: 1239262401049

Watershed: South Fork Eel River

County: Humboldt

Quad Name: Briceland

Survey Location Lat/Long: **Upstream** 40.09187/-123.93733

Downstream 40.09153/-123.93717

Method: Bank Observation and underwater camera

Surveyors: Scott Monday (CDFW ES), John Casali (landowner)

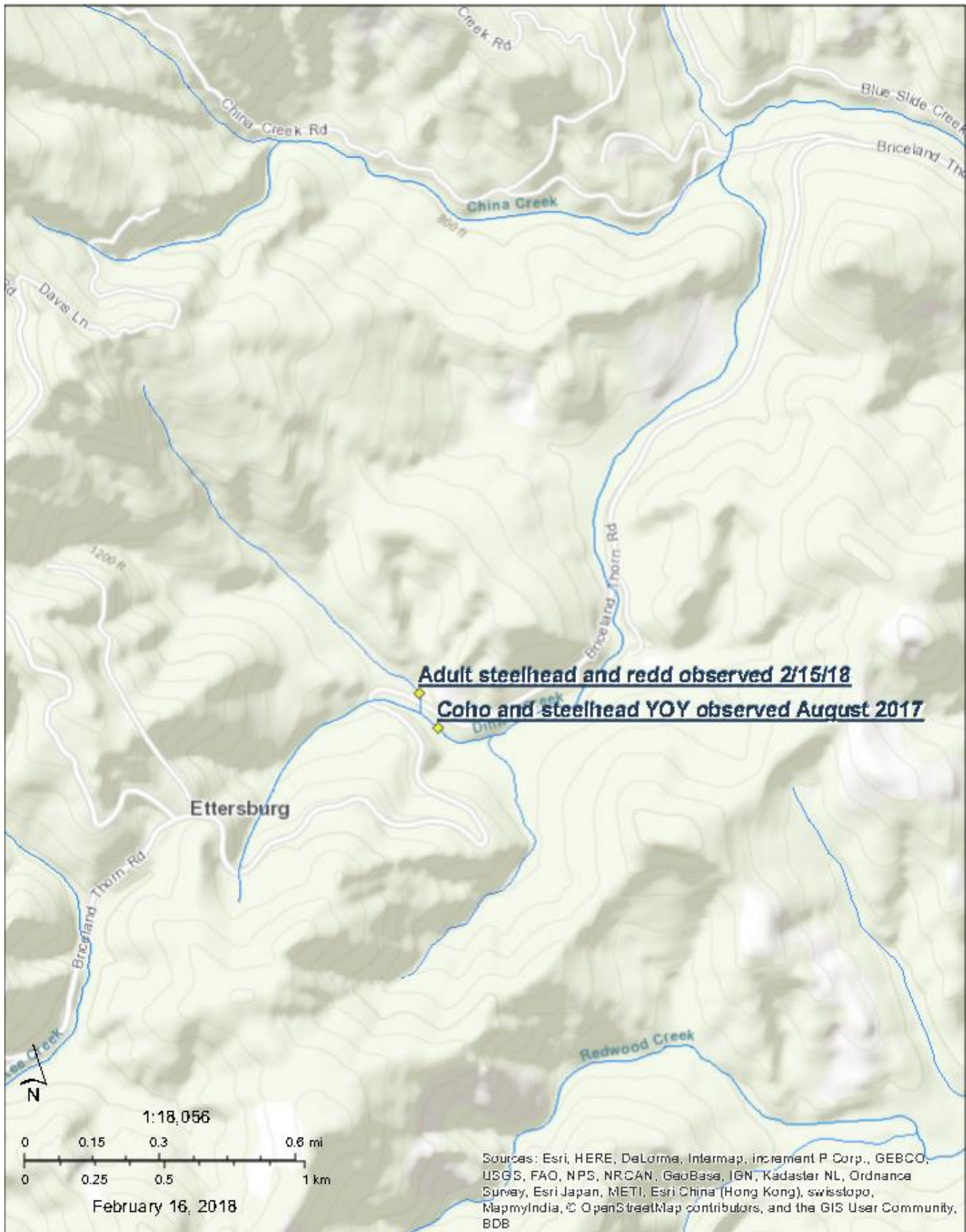
Purpose: The purpose of this survey was to document winter steelhead upstream of the Briceland-Thorn Road crossing on Dinner Creek, PAD ID 713215 (Picture 1). The crossing was replaced in winter 2016 due to a blowout during a storm. The landowner upstream of the crossing had seen two or three adult steelhead in a pool upstream of the crossing during the week of 2/12/2018. Steelhead-trout had not been previously documented above the Briceland Thorn Road crossing.

Observations: I met with the landowner on 2/15/2018 to locate the pool with steelhead. The pool is located approximately 75' upstream of the Briceland Thorn Road crossing and approximately 25' below a private crossing (Picture 2). Two adult steelhead were observed from streambanks. With the aid of an underwater camera, three adult steelhead were detected hiding at the upper end of the pool, under a bubble curtain and undercut bank (Picture 3). The fish are partially observed in an attached picture. Underwater visibility was ~2ft. The weather was sunny and cold. Air and water temperatures were not taken. The previous significant rainfall happened January 24 through January 25, 2018 in the amount of 0.41 inches.

Species (common)	YOY	1+	2+	Adult	Coordinates Lat/Long (NAD83)	Notes
Steelhead Trout	0	0	0	3	40.0917/-123.9371	~75' upstream of Briceland Rd crossing, below private crossing

Notes: Approximately two feet of streambed material had been evacuated between Briceland Road and the private crossing following the upgrade of the Briceland Rd culvert in winter 2016/17. Landowners at the site said the pool where the steelhead are located was not there prior to the culvert upgrade.

Recommendations: It is recommended that these adult steelhead be observed through February and into March due to the low forecasted rainfall amounts. Large wood should be installed to slow the headcut upstream of Briceland Rd crossing. Bank armoring may be necessary to reduce bank scour between the private crossing and Briceland Rd crossing.



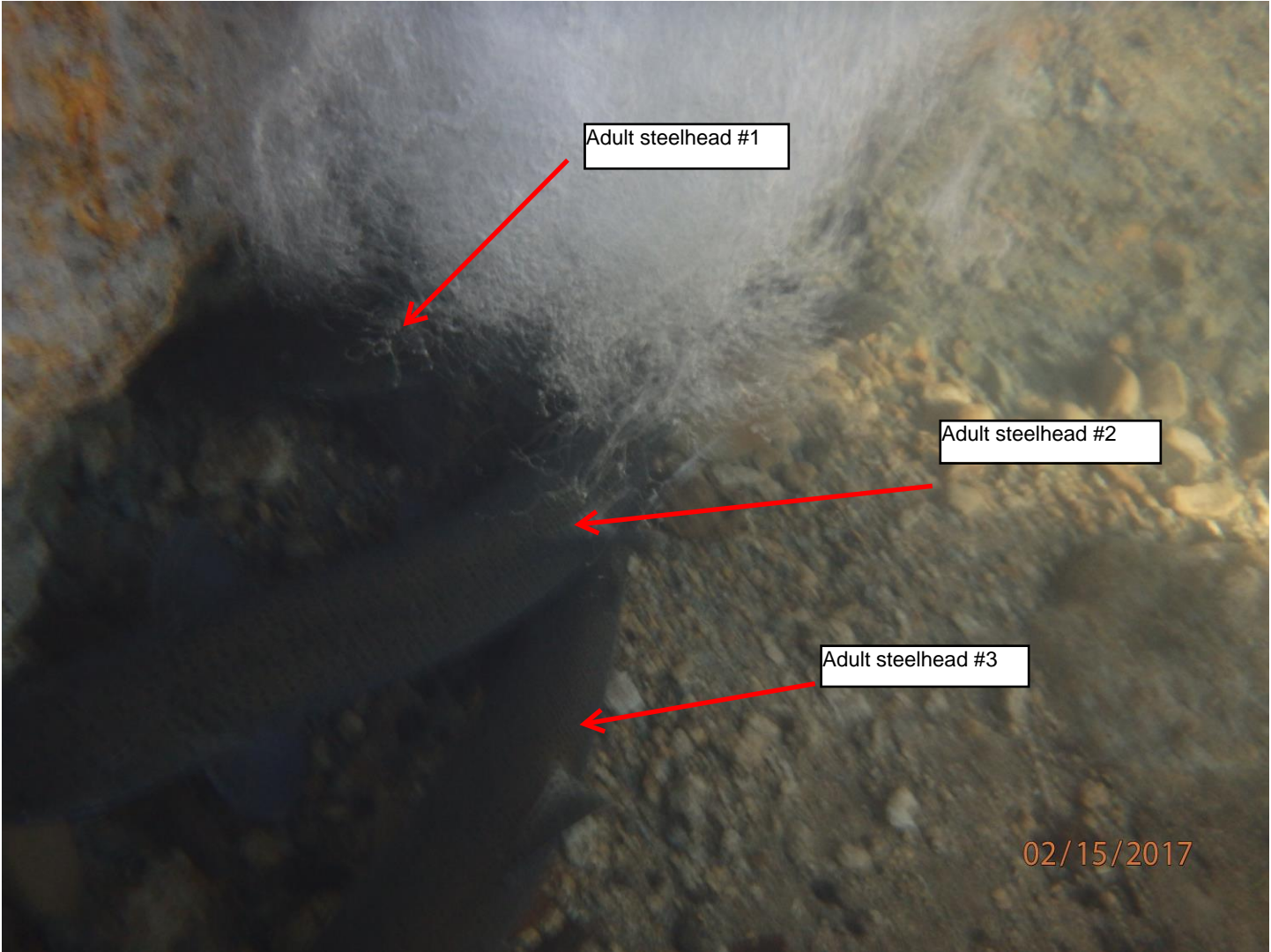
Map 1. Location of adult steelhead observed on February 15, 2018. Coho and steelhead young-of-the-year were observed on August 24, 2017 downstream of the crossing on Briceland Thorn Road.



Picture 1. Looking upstream at Briceland Thorn Road crossing replaced during winter 2016/2017. PAD ID 713215.



Picture 2. Looking upstream at pool with adult steelhead, bank erosion, and upstream private crossing. Steelhead redd is located between pool and crossing, near alders on right bank. The redd was observed on 2/1/18.



Picture 3. Three adult steelhead with heads pointing upstream. The head, eyes and pectoral fins of a smaller steelhead can be seen to left of bubble curtain.