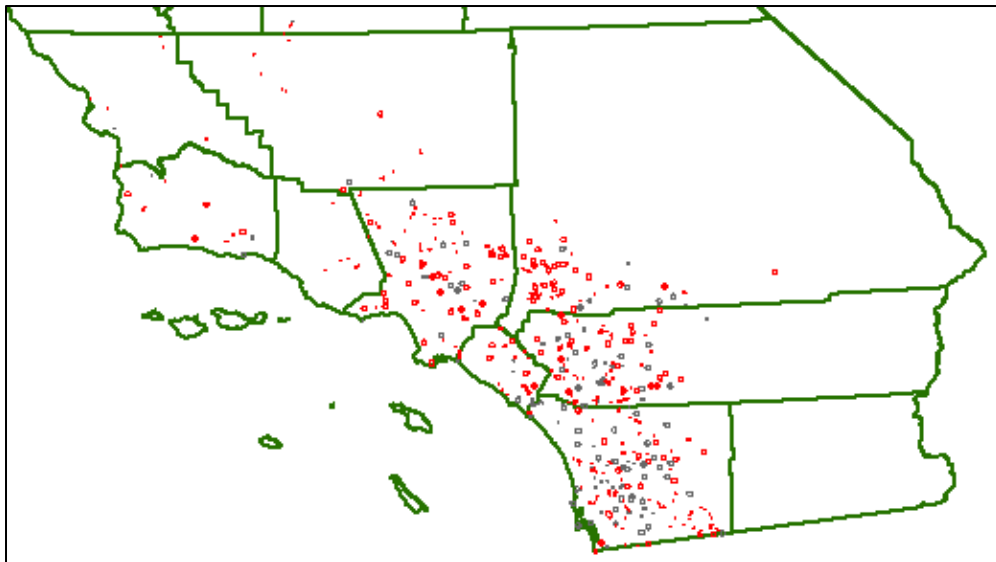




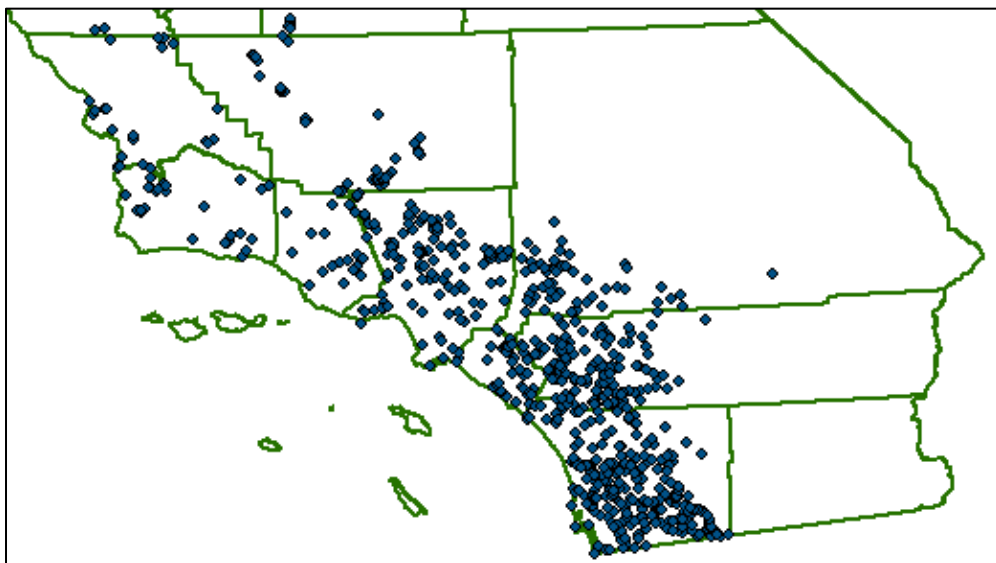
Creating Point Features from the CNDDDB Spatial Data

The CNDDDB GIS data contains Element Occurrence (EO) features. Each feature consists of one or more polygons. The different sizes and numbers of polygons indicate the level of location detail provided in the source document(s) for the Element Occurrences. It is important to note that the center of the Element Occurrence does not denote an observation site for the Element.

When creating maps, there are sometimes situations where the scale is so small that not all of the polygon features can be distinguished. For example, consider the following map of coast horned lizard EOs in southern California. At this scale, not all of the Element Occurrences are discernible.



The following map shows those same EOs represented as points, which more clearly depicts the distribution of the Element Occurrences at this scale.



Point representations of the CNDDDB spatial data should only be used for small scale maps, and should not be used for analyses. When used for analyses, the point representations will most likely provide erroneous results. For example, consider the following map of a tidewater goby EO, which has been mapped along San Luis Obispo Creek, and its point representation. The point representation is not even within the creek.



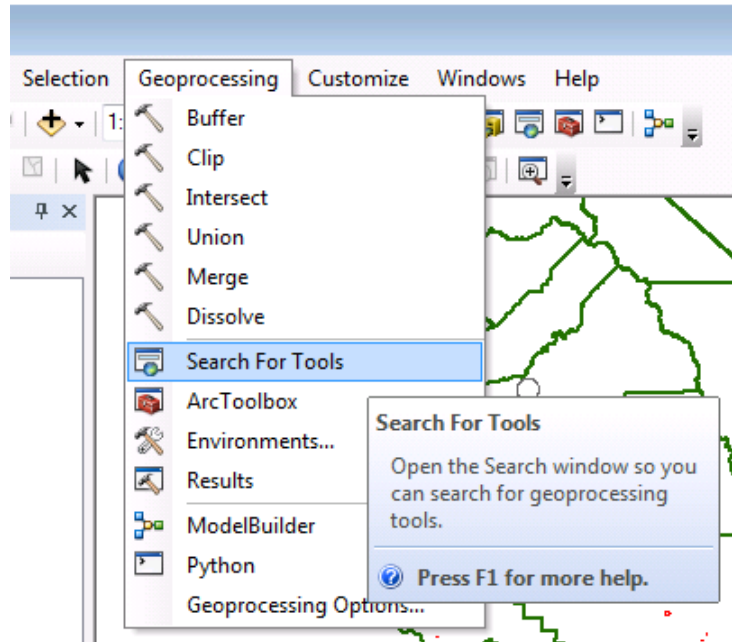
A similar issue occurs when Element Occurrences are near county lines, quad borders, or project area boundaries. The location of the point representations can make it appear that an Element does not occur within a county, quad, or project area, when it actually does.


Basic Steps for Converting Features to Points:

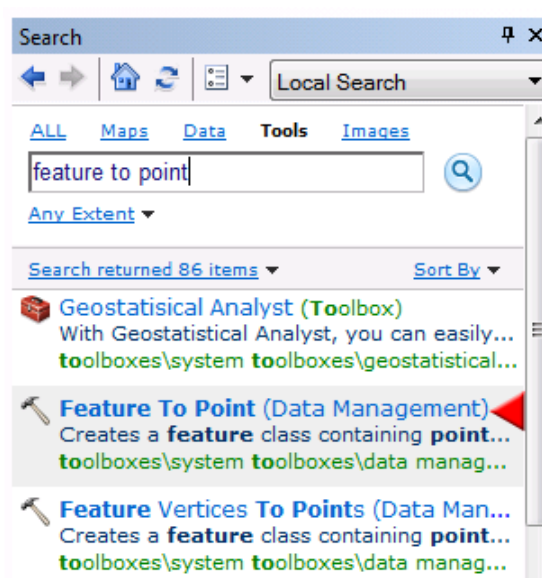
1. In ArcMap, select "Search For Tools" from the Geoprocessing menu.
2. In the Search panel, enter "feature to point," and press Enter or click the Search icon.
3. In the results list, click on the "Feature To Point (Data Management)".
4. In the Feature To Point dialog, specify the input features by either selecting the CNDDDB layer in your ArcMap project or browsing to the CNDDDB shapefile.
5. In the Feature To Point dialog, specify the name and location for the Output Feature Class.
6. Click OK. The point data will be generated and can be added to your ArcMap project.

Detailed Instructions:

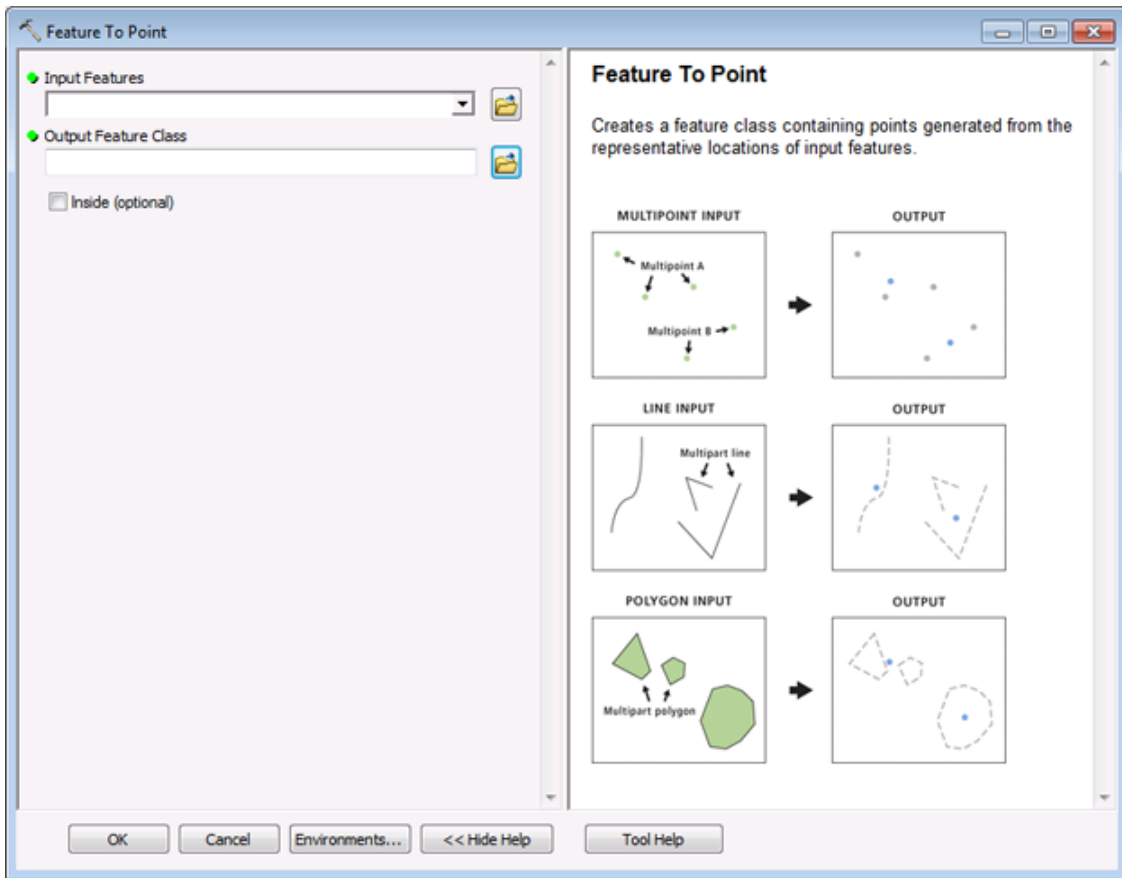
To generate point features from polygon features, you can use an ArcToolbox geoprocessing tool. The "Feature To Point" tool is in the **Features** category of the **Data Management Tools** toolbox. To access this tool in ArcMap, select "Search For Tools" from the Geoprocessing menu.



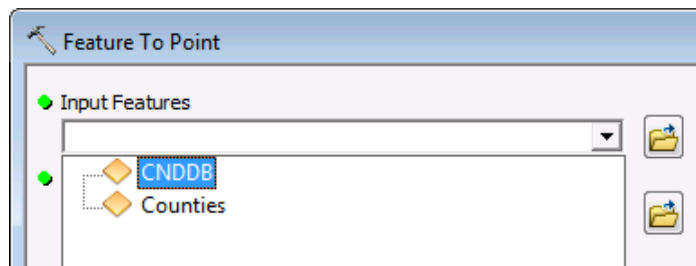
In the Search panel, you want to find a tool that will convert a feature to a point. Enter the text "feature to point", and then press the Enter key or click the Search icon . This should generate a list of search results.



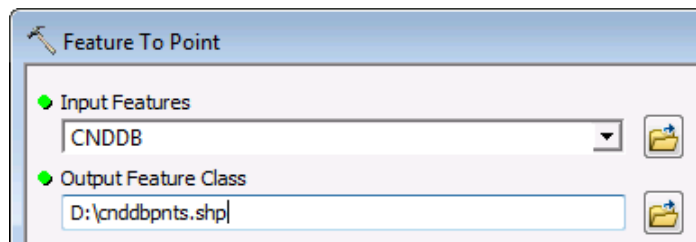
In the results list, click on the "Feature To Point (Data Management)" result. This will open the Feature To Point geoprocessing tool.



In the **Feature To Point** tool's dialog, specify the input features by either selecting the CNDDDB layer in your ArcMap project or browsing to the CNDDDB shapefile by clicking the open folder icon 📁.



In the tool's dialog, also specify the name and location for the Output Feature Class by either typing it in or browsing to a location.



Finally, click OK. The point data will be generated and can be added to your ArcMap project. (It might be automatically added to your project, depending upon your configuration.)