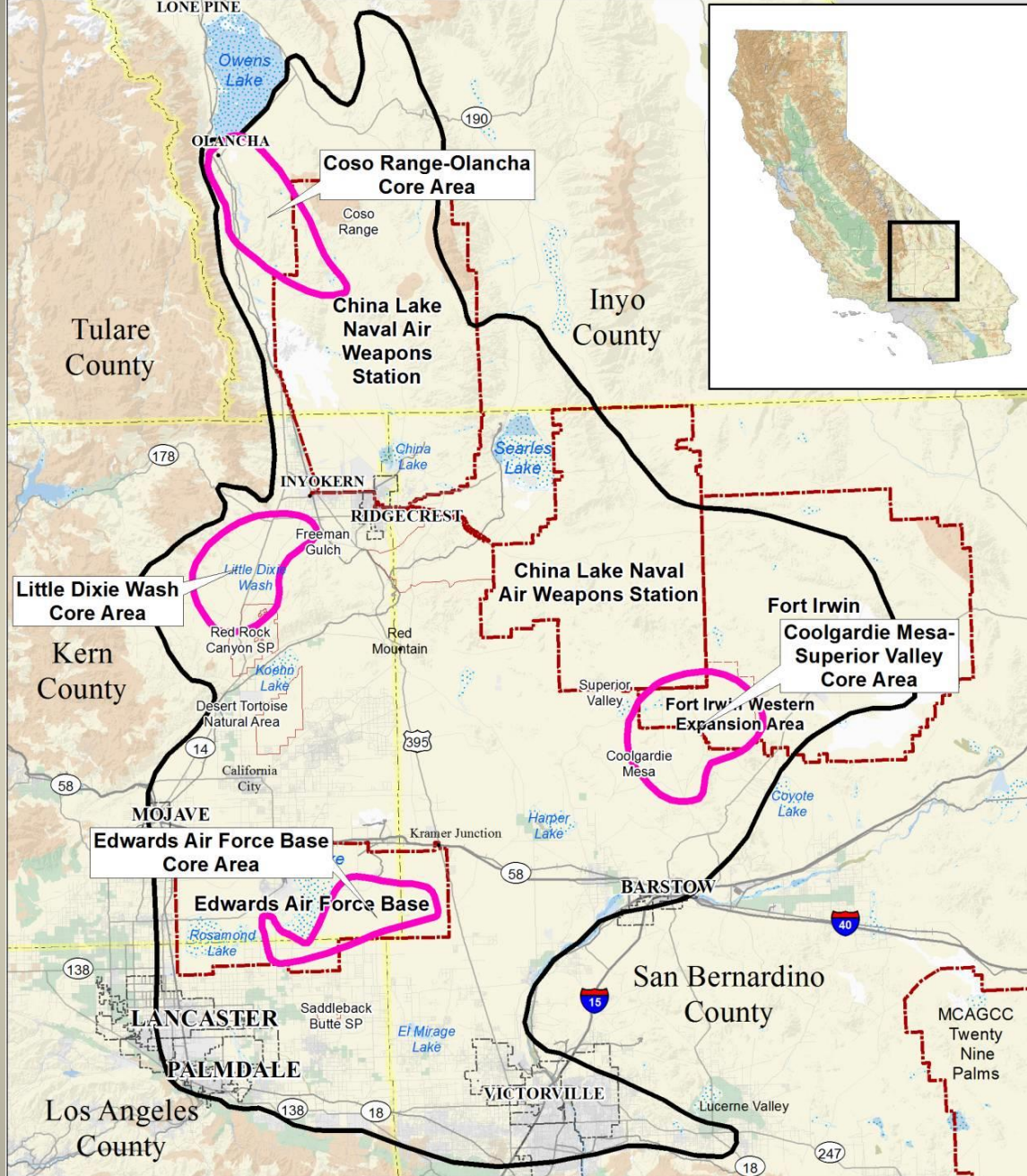




MGS Projects 2018

A Lot Going On This Year!



 Boundary of Mohave ground squirrel range
 Identified core area

0 5 10 20 30 40 Miles
0 10 20 40 60 Kilometers



SURVEYS IN CORE AREAS

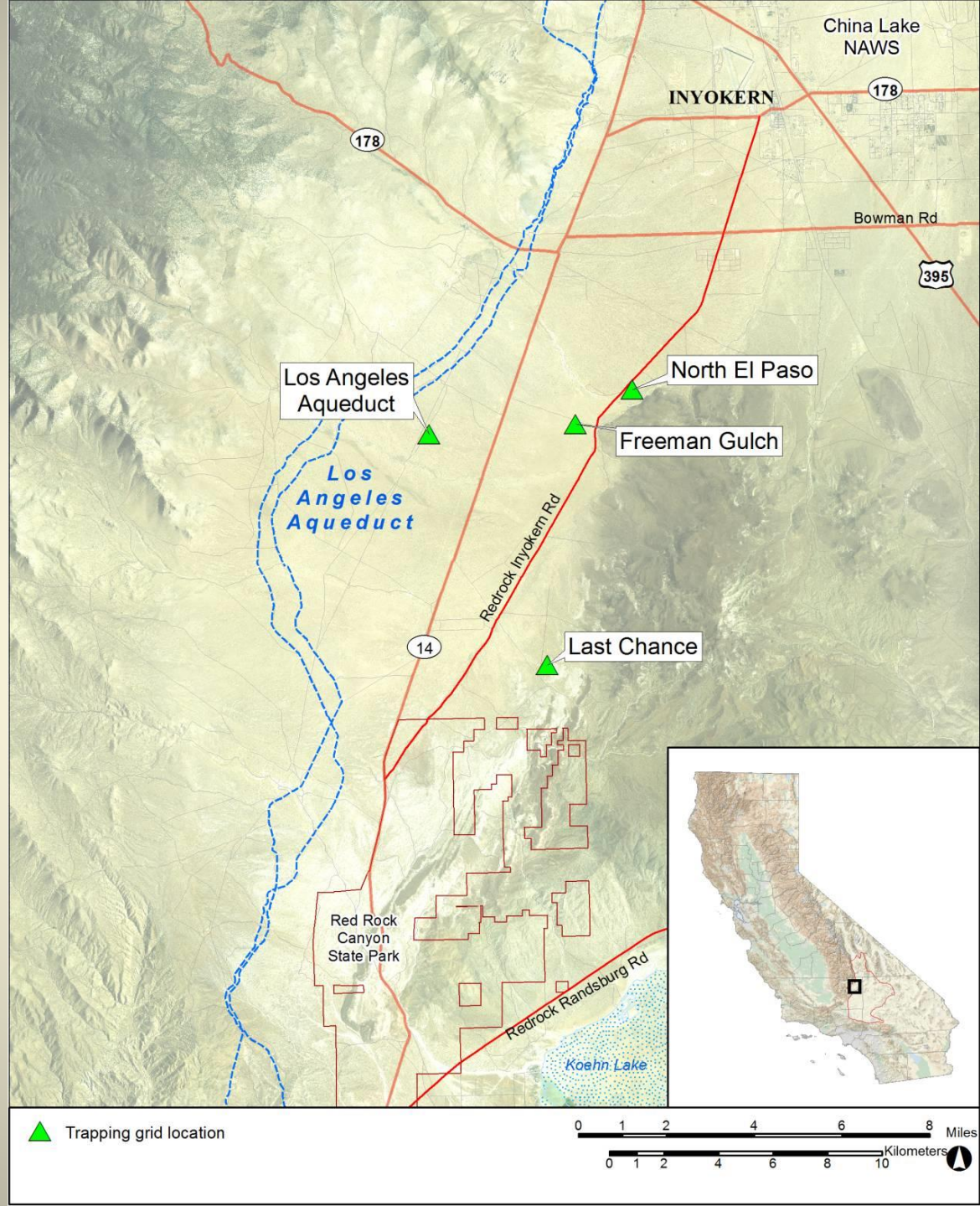
- Coso Range – 2 grids trapped in March
- Little Dixie Wash – 4 grids trapped in April
- Coolgardie Mesa – 3 grids trapped in April
- Edwards AFB – Camera trapping at sites with previous MGS detections
- All core areas will be surveyed this year

LITTLE DIXIE WASH CORE AREA

2016 – ONE GRID TRAPPED

2017 – FOUR GRIDS TRAPPED

2018 – FOUR GRIDS TRAPPED

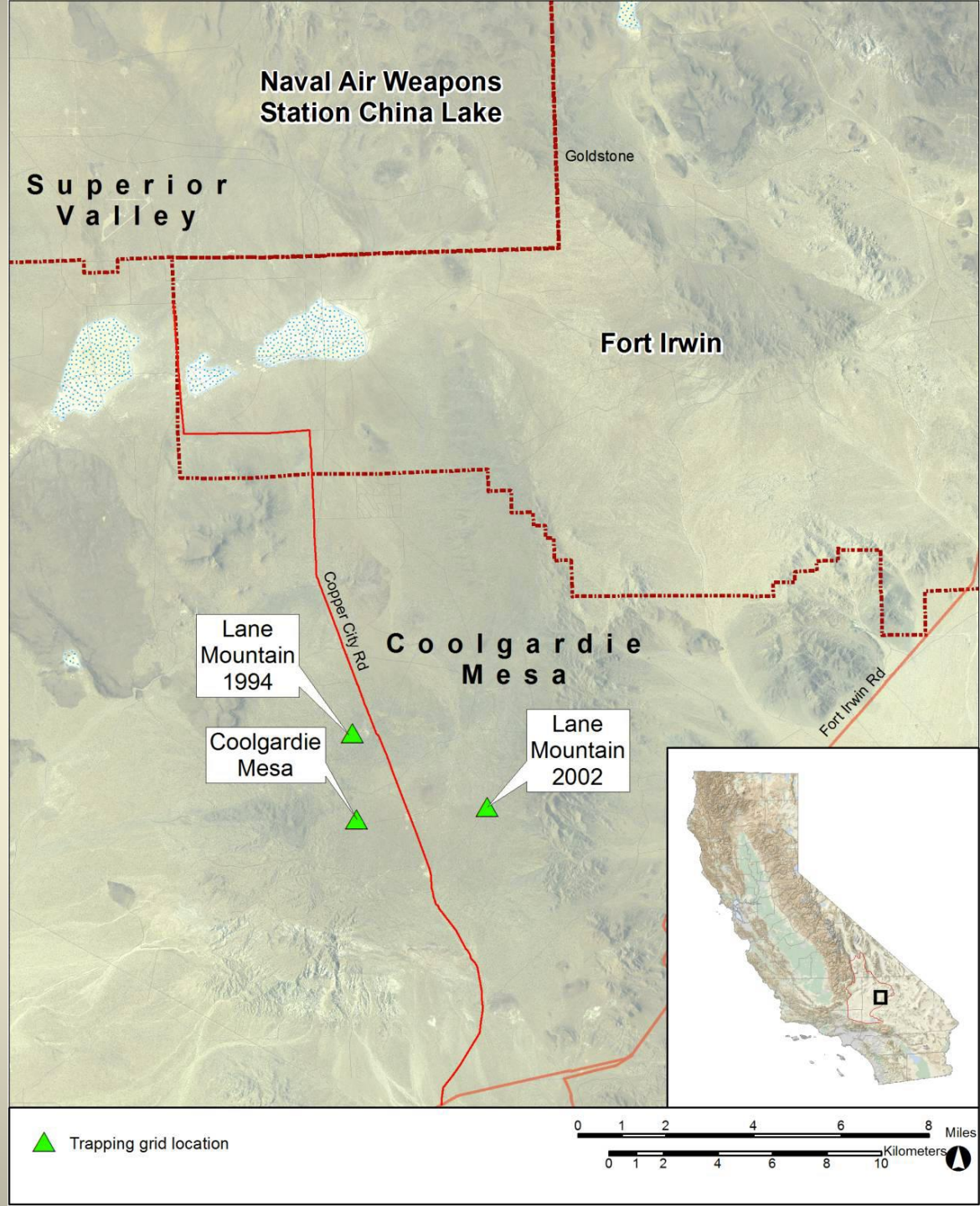


COOLGARDIE MESA CORE AREA

2016 – ONE GRID TRAPPED

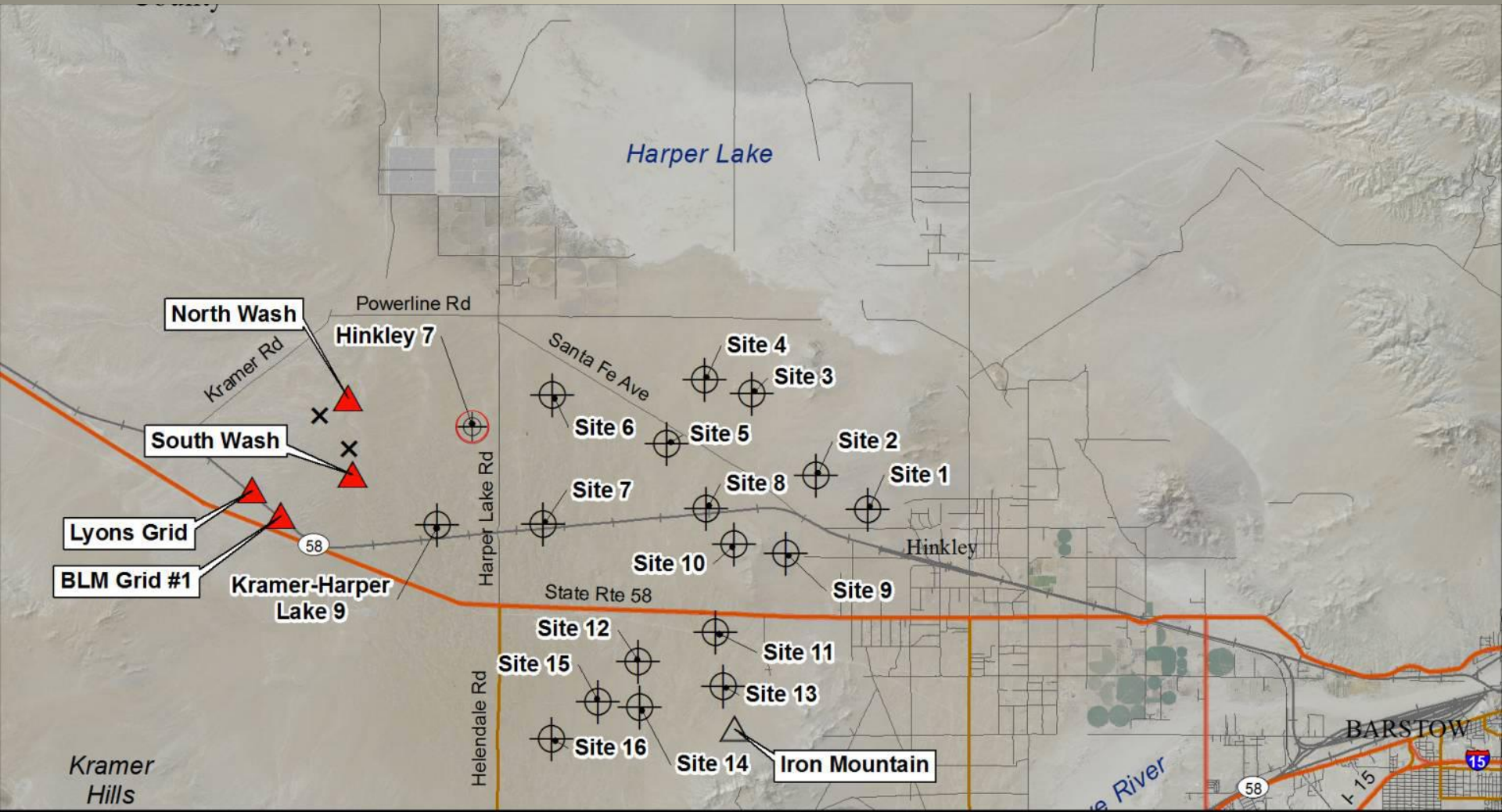
2017 – THREE GRIDS TRAPPED

2018 – THREE GRIDS TRAPPED



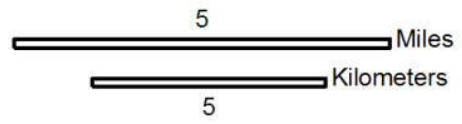
CONTACT ZONE

CAMERA AND LIVE TRAPPING



2017 MGS results

- ▲ MGS detected
- △ MGS not detected
- × MGS visual detection
- ⊗ Camera MGS detected
- ⊕ Camera MGS not detected

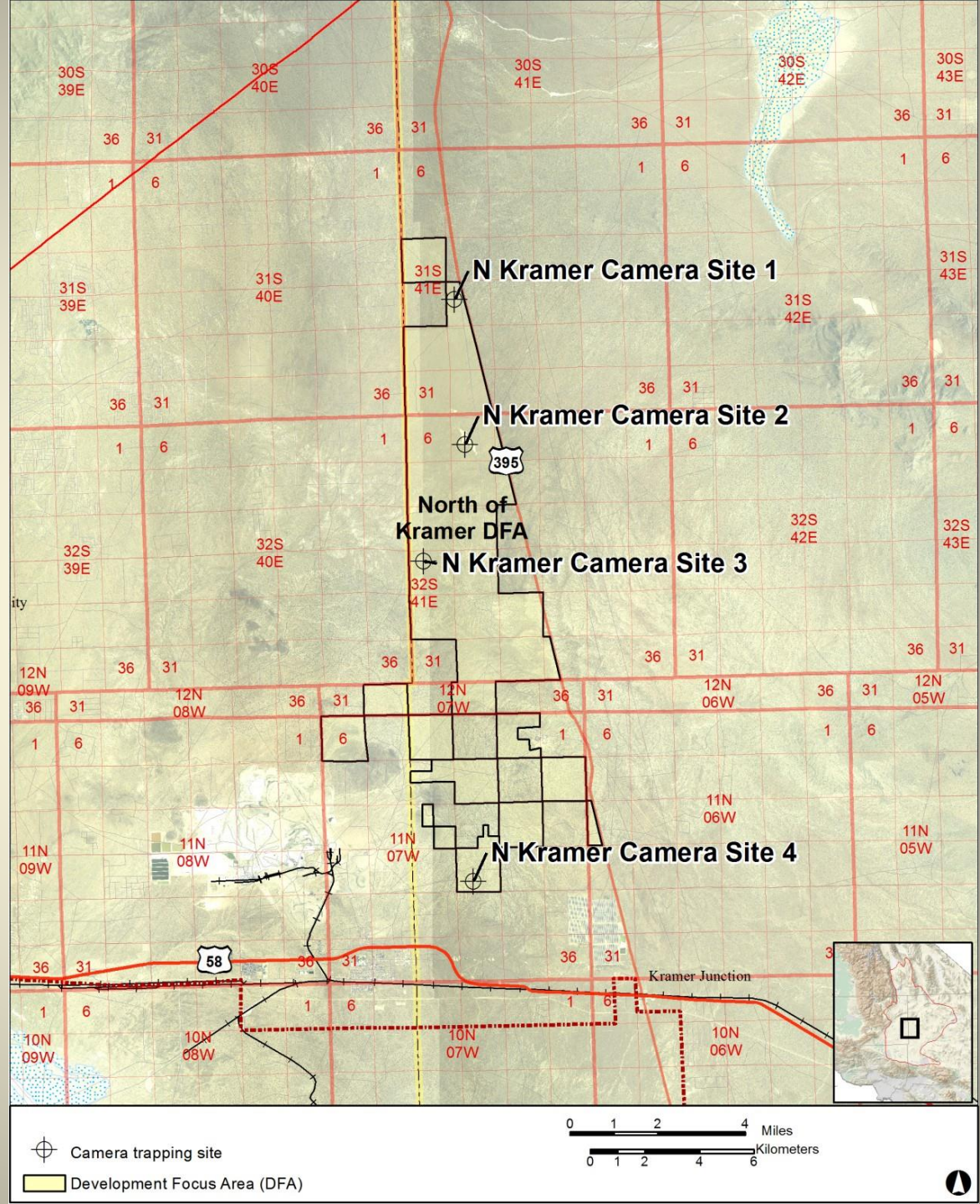


New Surveys at BLM DFAs

- 4 Development Focus Areas within the MGS range were designated in the DRECP
- 3 will be surveyed this spring:
 - North of Kramer aka Bowling Alley
 - Searles Lake
 - Haiwee (Rose Valley)
- Several survey techniques:
 - Living trapping
 - Camera trapping
 - Shrub sampling

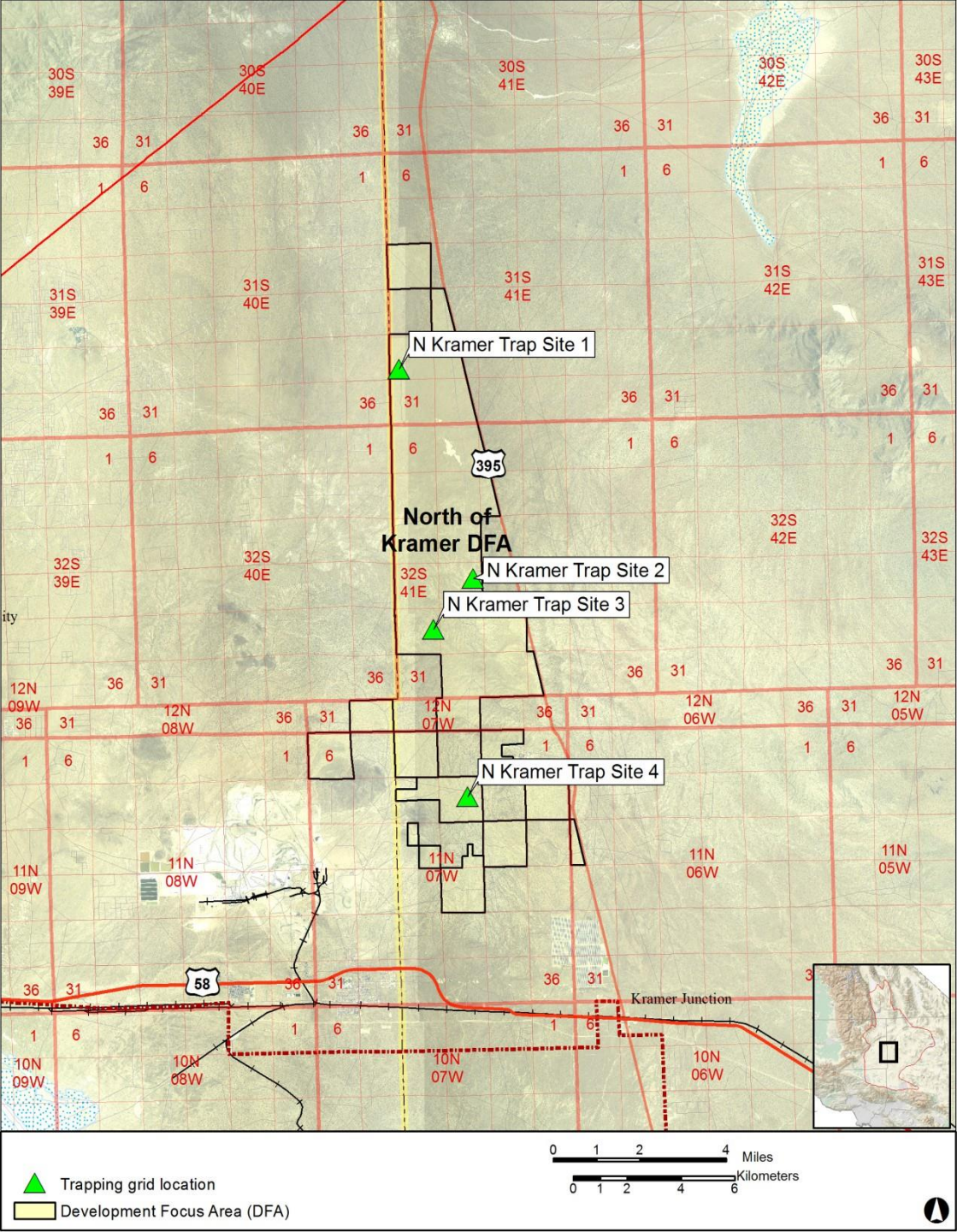
NORTH OF KRAMER DFA

4 CAMERA SITES SELECTED



NORTH OF KRAMER DFA

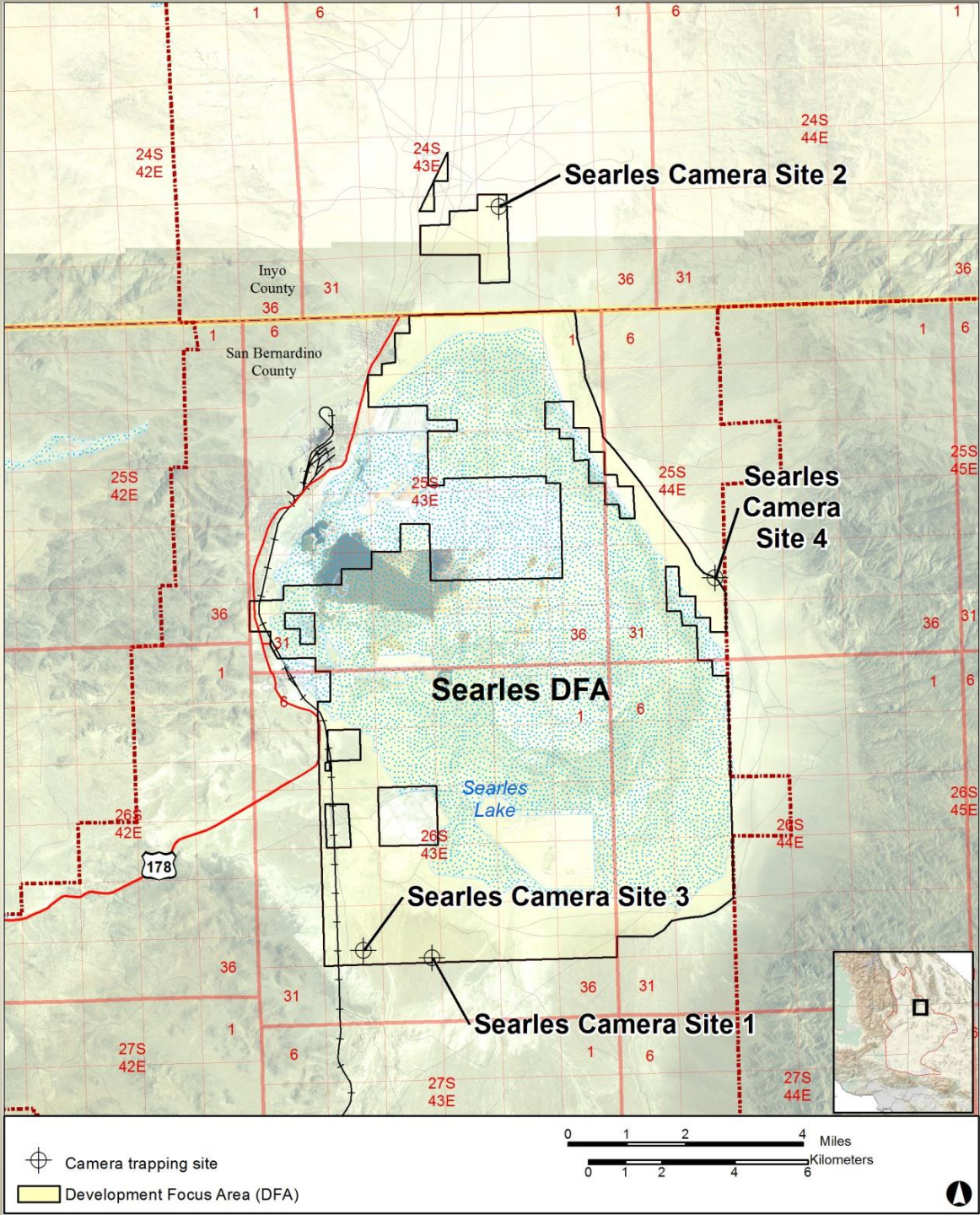
4 TRAPPING SITES SELECTED



SEARLES DFA

SOME SUITABLE HABITAT AROUND
EDGES OF PLAYA

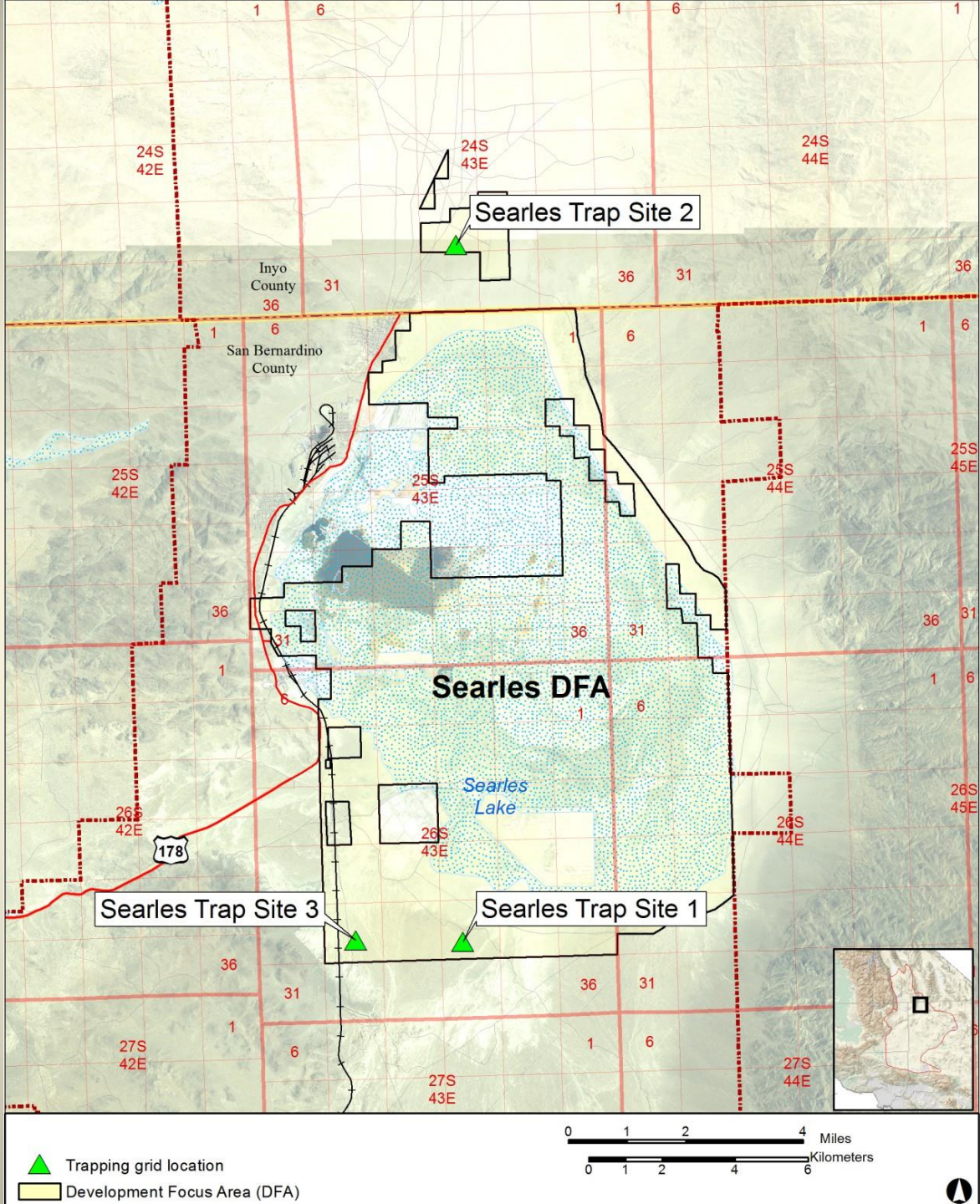
4 CAMERA SITES SELECTED



SEARLES DFA

SOME SUITABLE HABITAT AROUND
EDGES OF PLAYA

4 TRAPPING SITES SELECTED

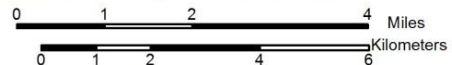
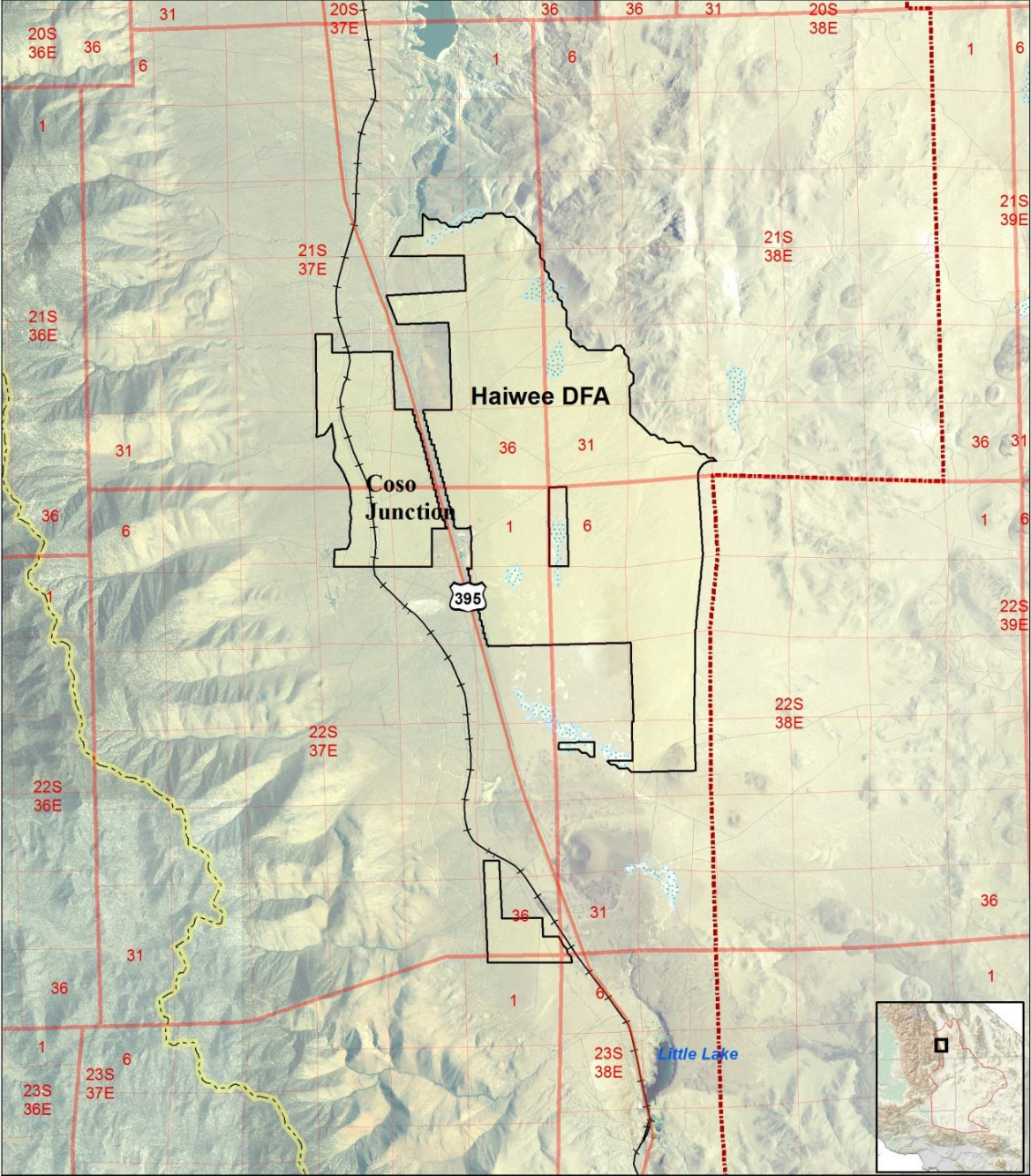


HAIWEE DFA

**POTENTIAL GEOTHERMAL
DEVELOPMENT**

1 CAMERA SITE TO BE SELECTED

1 TRAPPING SITE TO BE SELECTED



Habitat Suitability Modeling

- Collaboration with USGS – Todd Esque and Rich Inman
- Use Coso data (1988-1996) to look at fine scale patterns
 - Compare MGS capture locations with data on shrub and herbaceous resources
 - Four study sites as replicates
- Expand to large scale with CDFW vegetation mapping and remote sensing

MONITORING IN CORE AREAS AND CONTACT ZONE 2016-2017

- BLM-sponsored surveys in Little Dixie Wash and Coolgardie Mesa – 9 grids, 1 MGS
- Coso sites
 - 8 MGS/2 sites in 2016
 - 0 MGS/1 site in 2017
- Contact Zone
 - 1 ad, 3 juv MGS at 2/7 sites in 2016
 - 2 ad, 25 juv MGS at 4/5 grids in 2017

CDFW

Terrestrial Species Stressor Monitoring

- Major wildlife monitoring project in San Joaquin and Mojave deserts – 2016-17
- Hundreds of monitoring sites with cameras
- 4 ground squirrel species detected in Mojave Desert:
 - White-tailed antelope squirrel
 - California ground squirrel
 - Rock squirrel
 - Round-tailed ground squirrel

WITHIN MGS RANGE:

~72 STATIONS

~28 WITH AGS

0 with MGS

COMPLETELY INDEPENDENT EVIDENCE!

