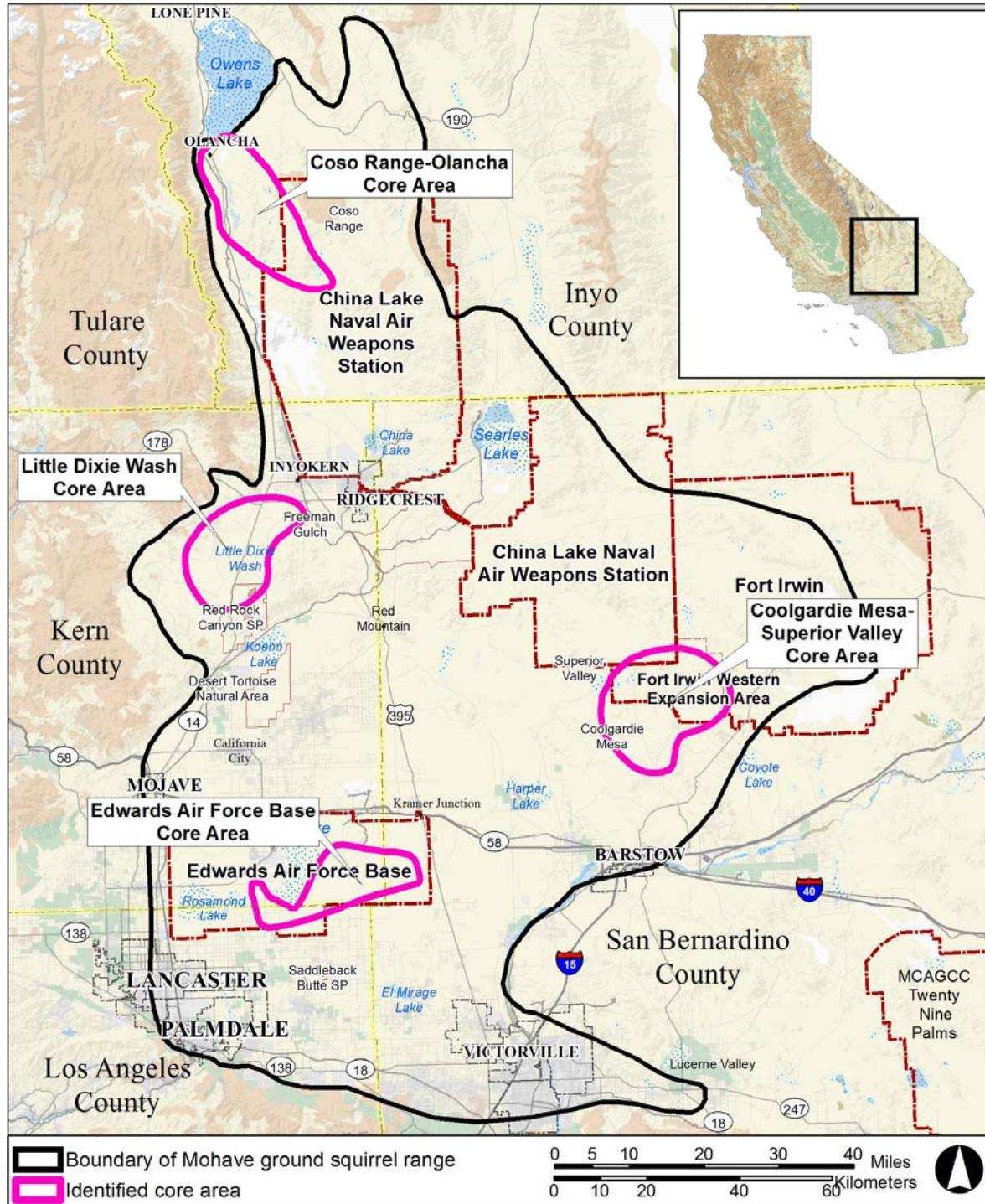


MGS PROJECTS 2018

Coso and BLM projects



Coso Trapping 2018

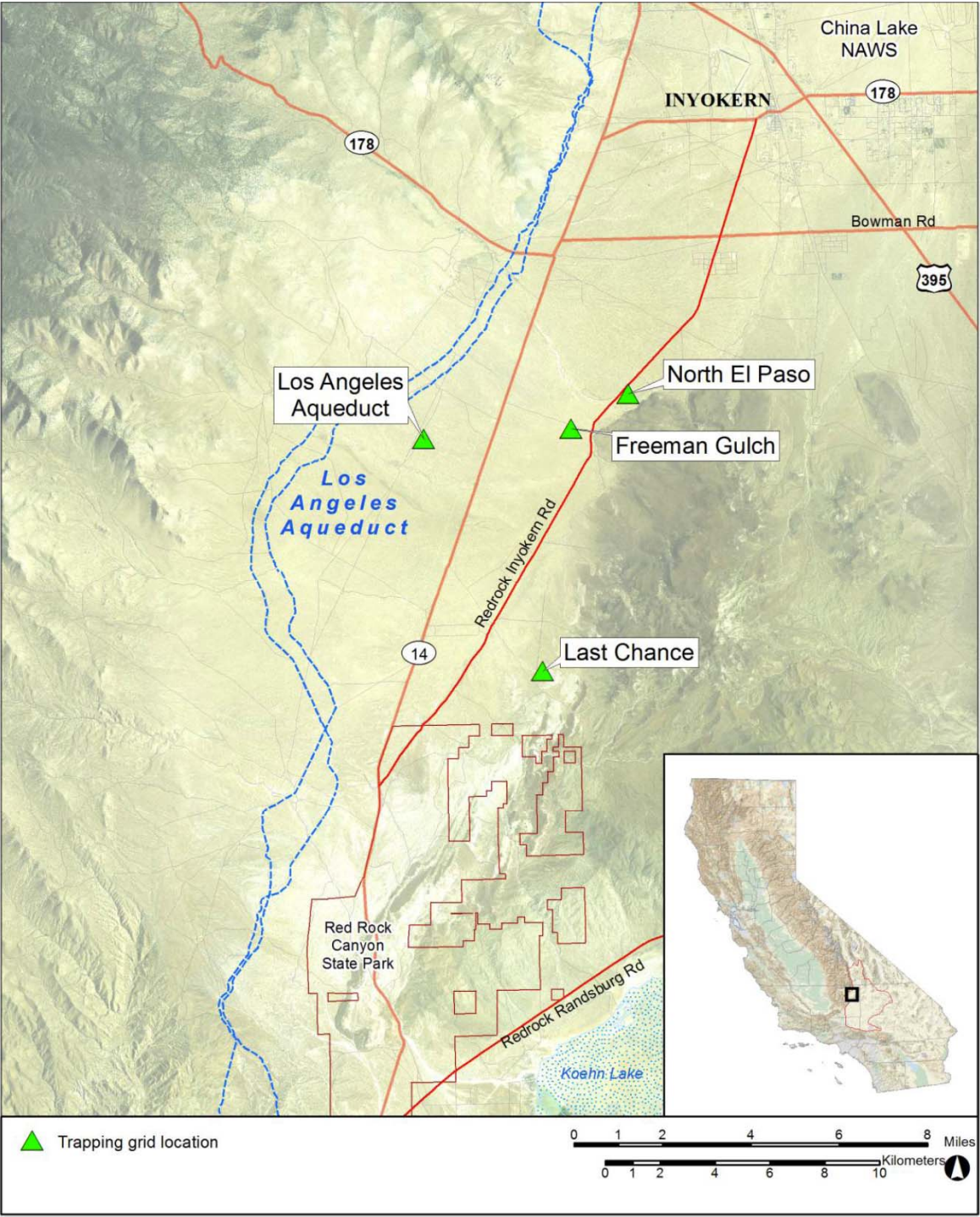


- Intrepid band of volunteers trapped Coso Basin and Cactus Peak grids in late March
- Good results – 7 MGS at Coso Basin and 5 at Cactus Peak
- And females were pregnant!
- 2016-17 winter rainfall was adequate for reproduction, so that's probably why numbers were up

Monitoring on BLM Lands



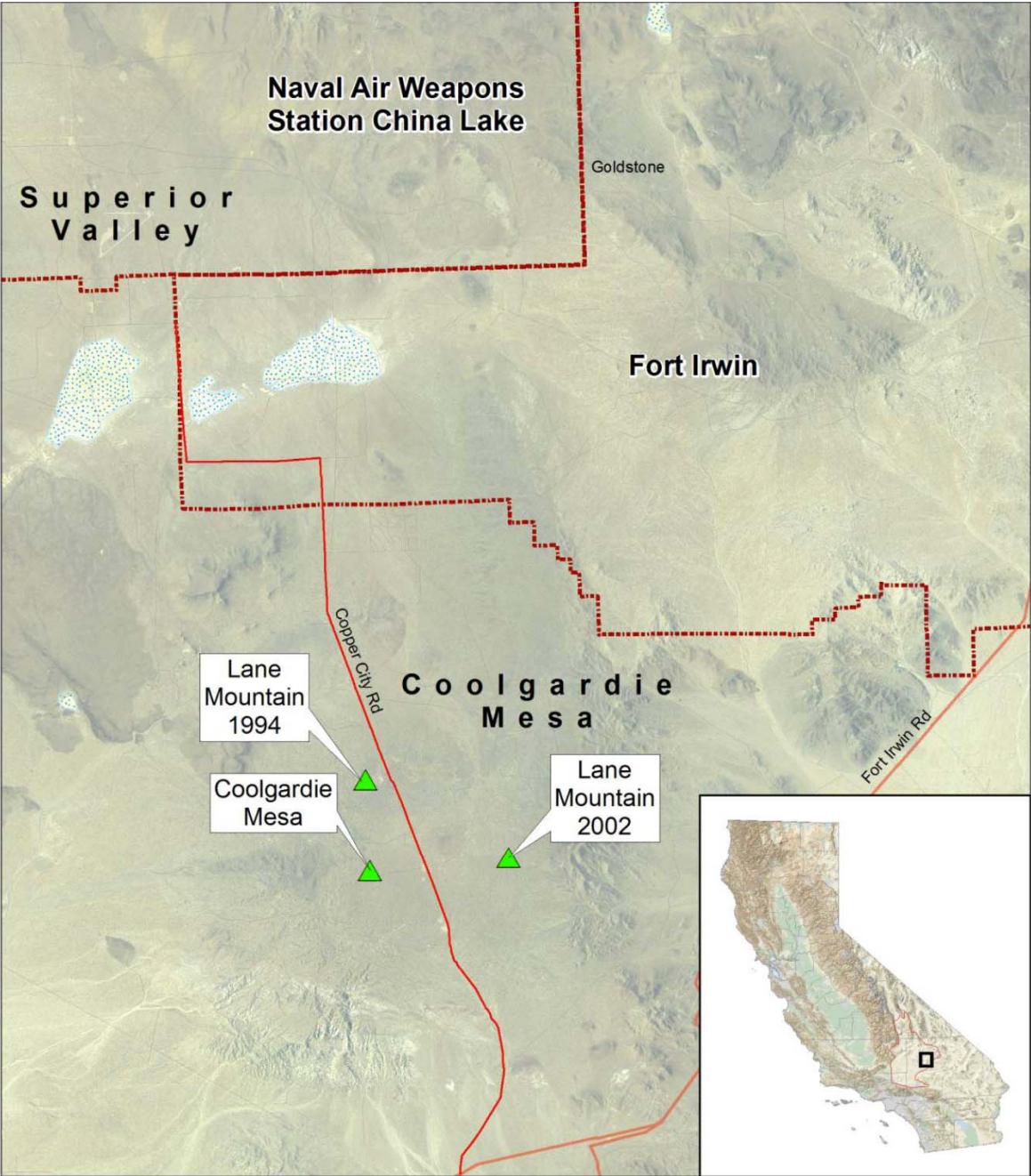
- 4 grids trapped in Little Dixie Wash core area
- 3 grids trapped in Coolgardie Mesa core area
- MGS-RTGS contact zone W of Hinkley
 - ▣ Camera trapping at 16 sites – same as 2017
 - ▣ Live trapping at 4 sites
- Development Focus Areas – new project
 - ▣ 3 DFAs – North of Kramer, Searles, Haiwee
 - ▣ Live trapping and camera trapping



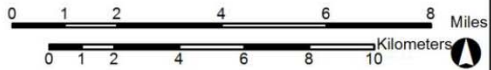
Little Dixie Wash



- Same 4 locations as 2017
 - ▣ In 2018 MGS caught at North El Paso (4) and Last Chance grids (1)
 - ▣ In 2017 no MGS captures but camera detections near Freeman Gulch and Last Chance
- Conclusions
 - ▣ Good winter rain throughout MGS range in 2017
 - ▣ MGS still sparsely distributed in LDW core area, but numbers increasing somewhat



▲ Trapping grid location



Coolgardie Mesa



- Same 3 locations as 2017
 - ▣ In 2018 MGS caught at Coolgardie Mesa grid (5) but no sign of reproduction
 - ▣ In 2017 no MGS captures, but 1 apparent juvenile visual detection
- Conclusions
 - ▣ Reproduction in CM core area in 2017
 - ▣ 2018 result – MGS present at 1 of 3 sites but no juveniles produced here

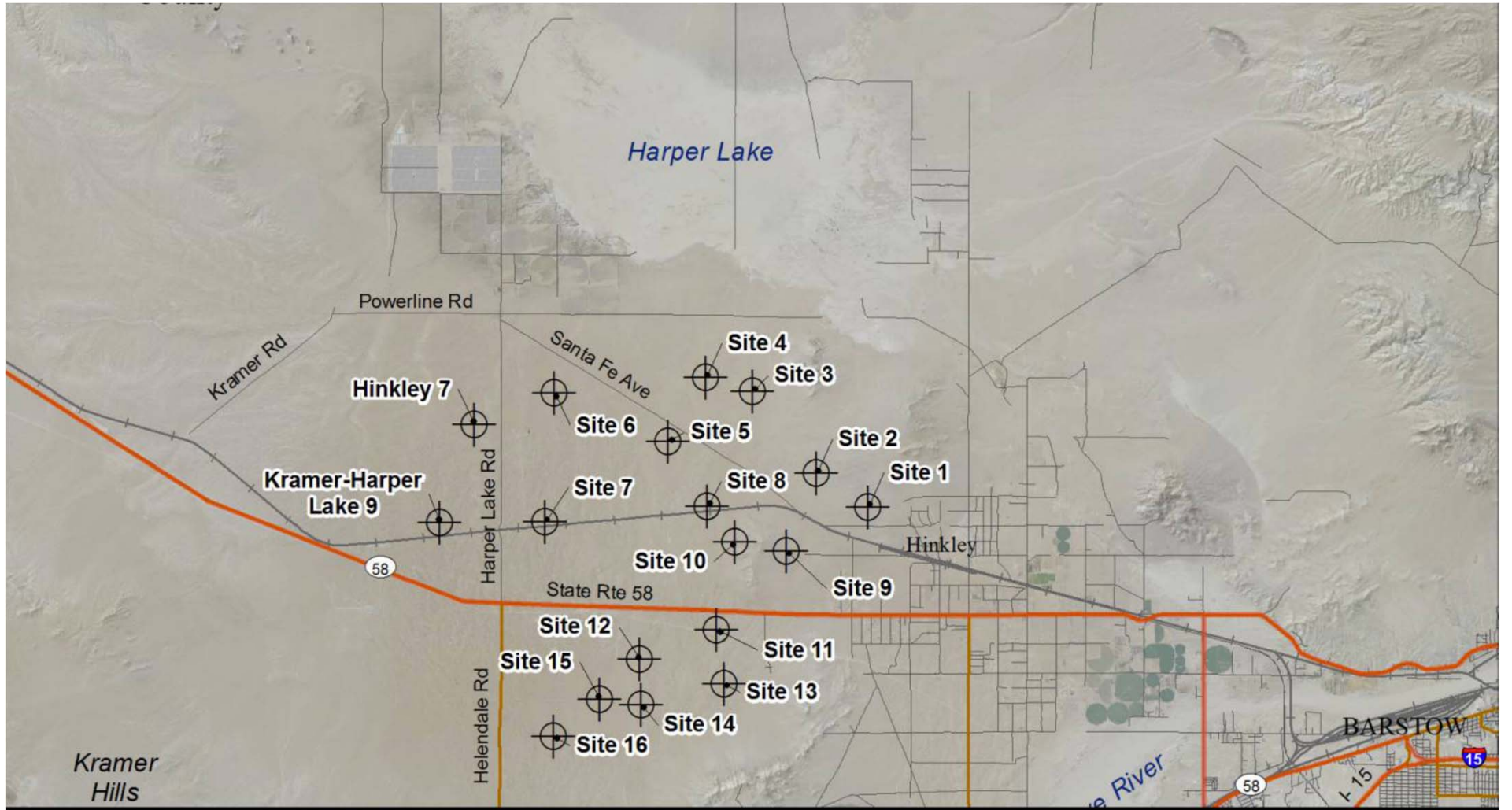
Core Area Conclusions




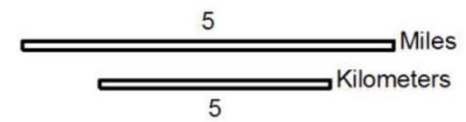
- All 7 grids have been trapped in previous years
- MGS adults have been captured at all these sites dating back to 2002, 1994, and even 1980
- MGS still present in both core areas and numbers up a bit due to reproduction in 2017
- But distribution very sparse and numbers low

West of Hinkley

- As in 2017 – surveys at same 16 camera sites E of Harper Lake Rd/Helendale Rd
 - ▣ Unlike 2017 MGS were detected at 4 camera sites
 - ▣ So MGS moved eastward toward Hinkley about 4 mi
 - ▣ No RTGS detections (apparently)
- Live-trapping was planned for late May /early June
 - ▣ Only trapped in late May / concern that MGS would estivate early
 - ▣ Adults were caught at 4 different locations
 - ▣ No sign of reproduction

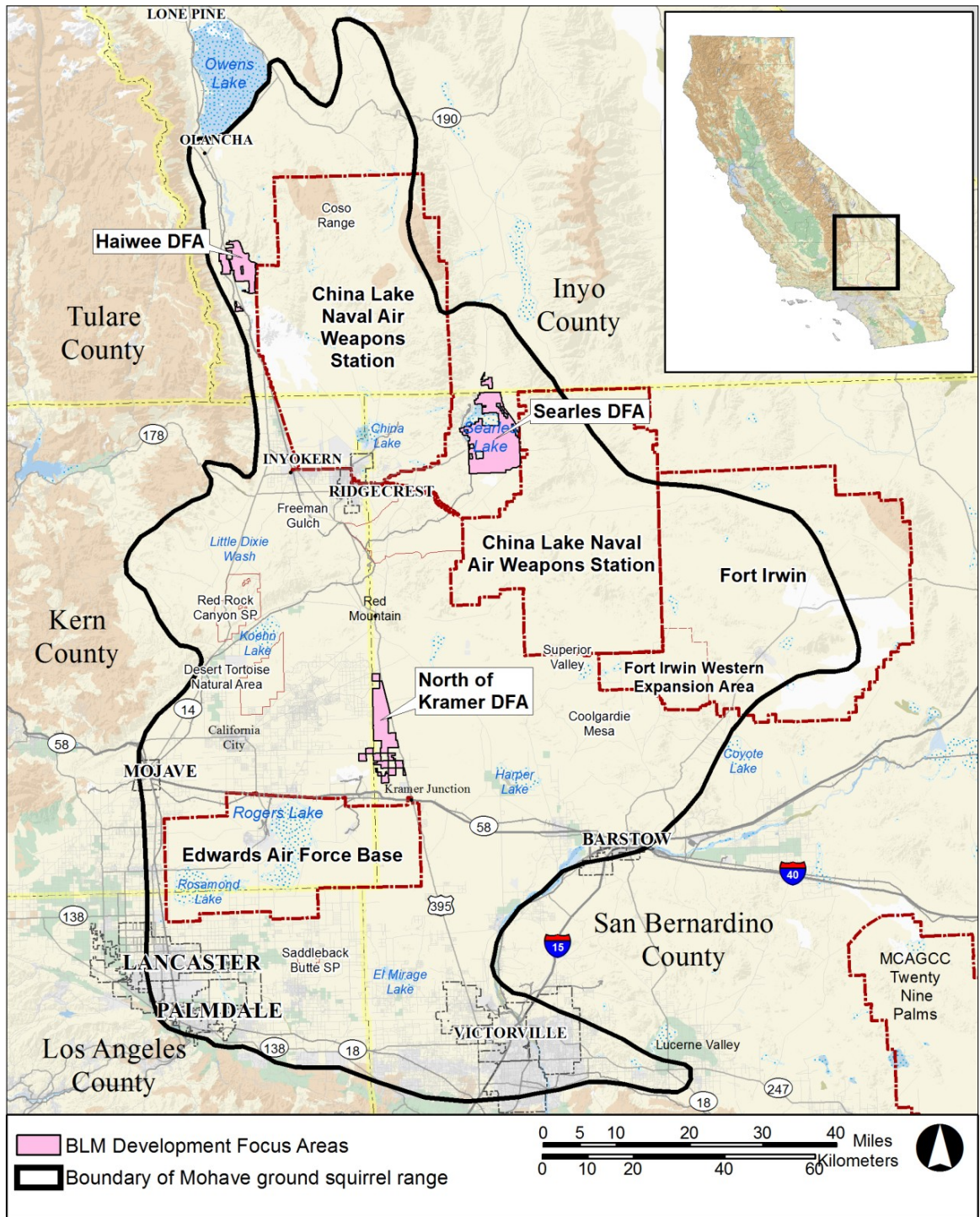


 Camera trapping site



Surveys at 3 DFAs

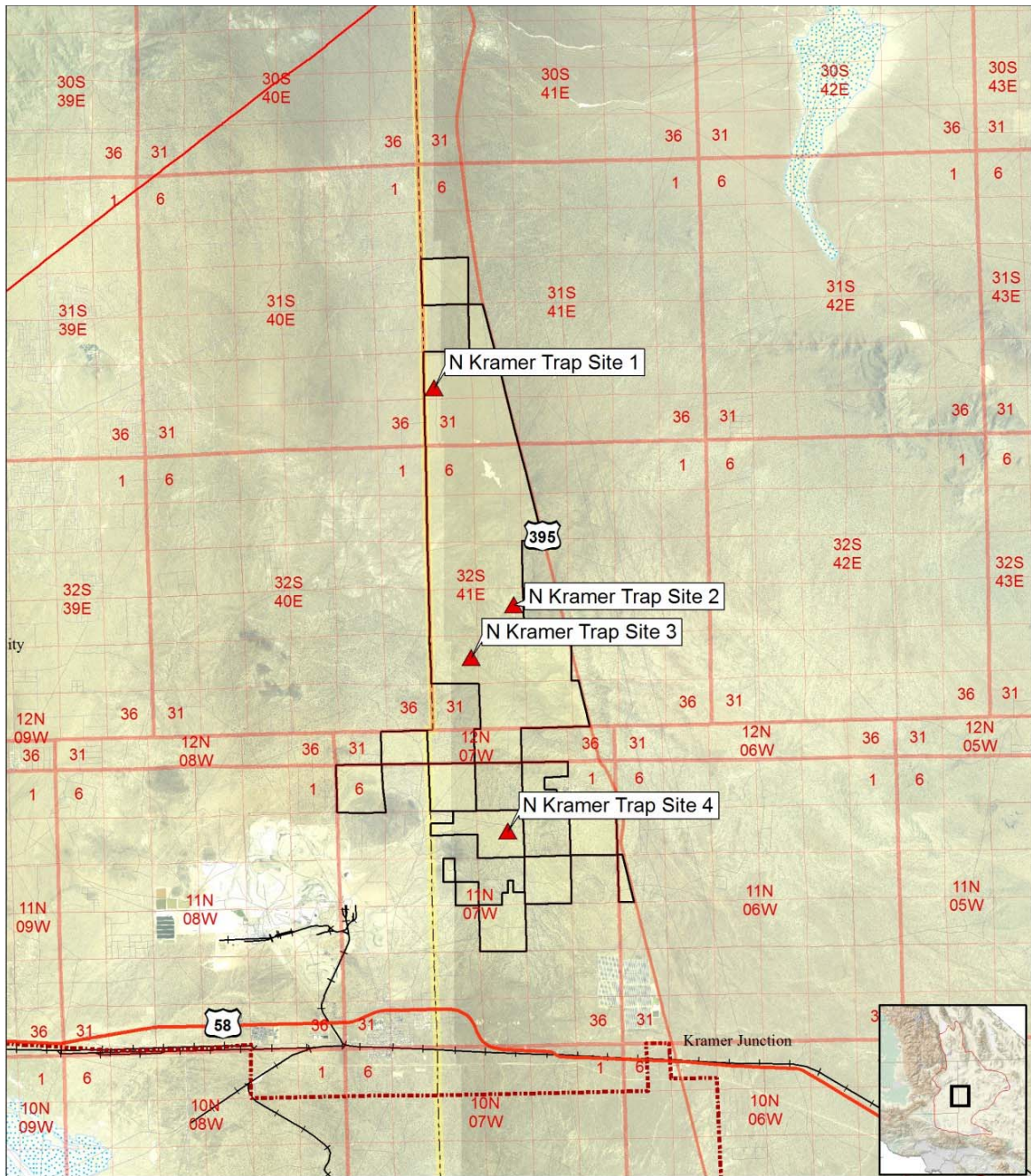
- First year to monitor MGS occurrence
 - North of Kramer (Bowling Alley)
 - Searles Lake
 - Haiwee (Rose Valley)
- Both live-trapping and trail cameras
 - NOK 4 camera sites, 4 trapping grids
 - SL 4 camera sites
 - HA 1 camera site, 1 trapping grid



BLM Development Focus Areas
 Boundary of Mohave ground squirrel range

0 5 10 20 30 40 Miles
 0 10 20 40 60 Kilometers

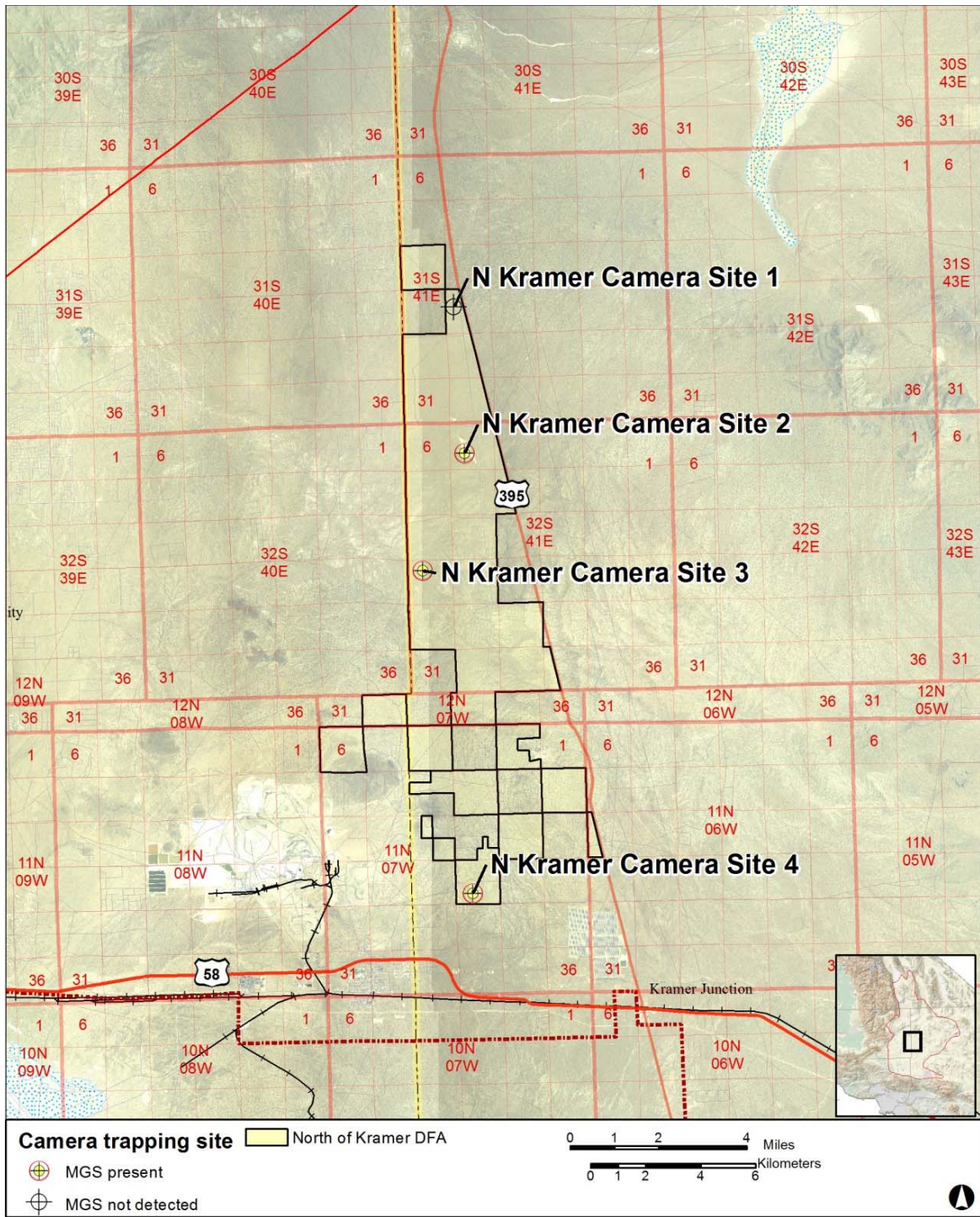




Trapping grid location North of Kramer DFA

- ▲ MGS present
- △ MGS not detected



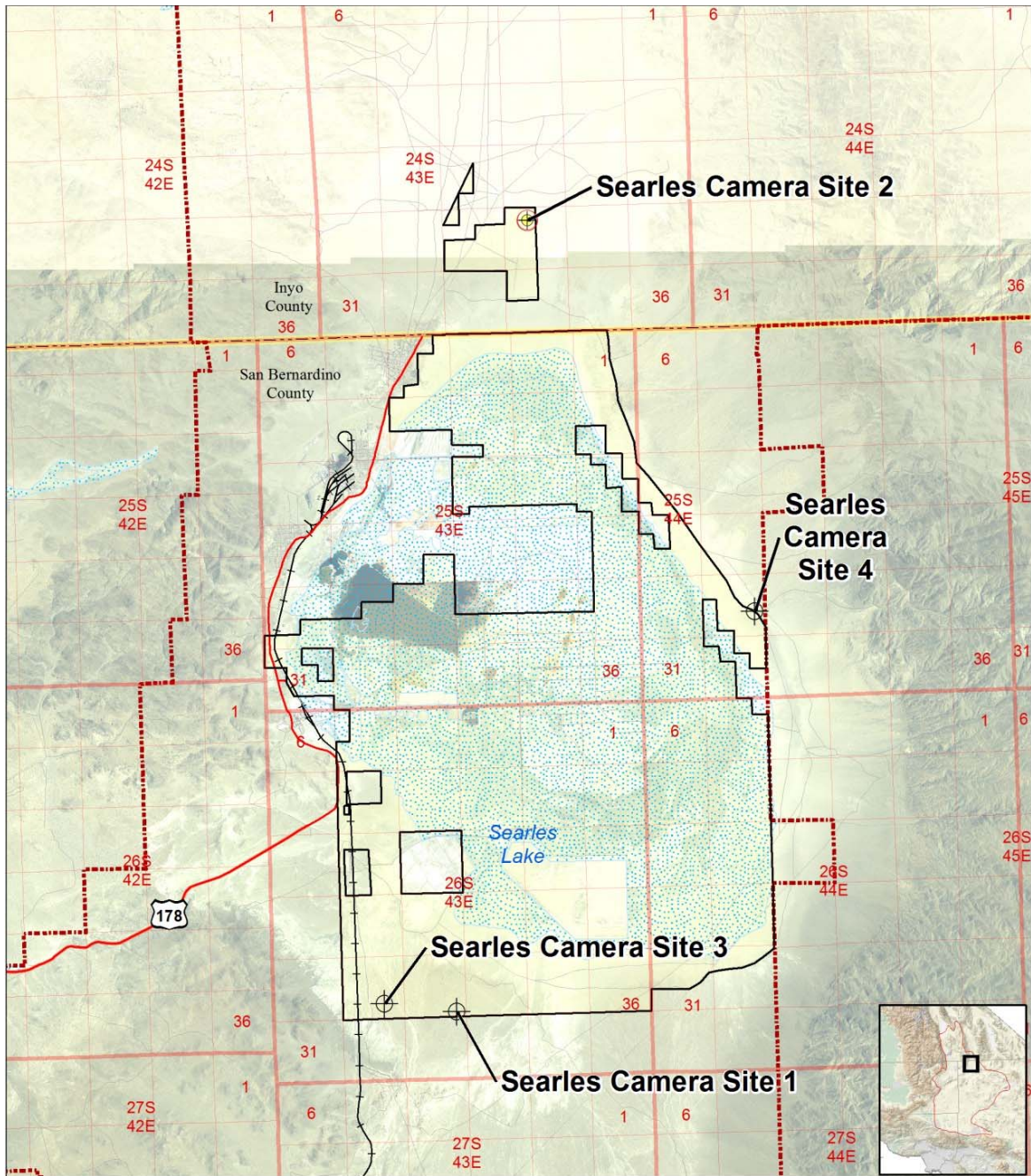


Camera trapping site North of Kramer DFA

MGS present

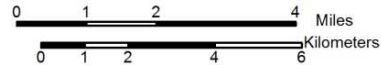
MGS not detected





Camera trapping site Searles DFA

- + MGS present
- MGS not detected



DFA Results



- Haiwee DFA – MGS at both camera and live-trapping sites (young detected)
- North of Kramer
 - ▣ MGS at 4 of 4 live-trapping grids (no young)
 - ▣ MGS at 3 of 4 camera sites
- Searles Lake
 - ▣ No live-trapping in 2018
 - ▣ MGS only at Camera Site 2 / north end of lake (no young)

Thanks to All the Field Crew



- Steven Chen
- Bruce Garlinger
- Patrick Kelly
- David Laabs
- Ed LaRue
- Chad Steiner
- Kyle Tabor
- Bill Vanherweg
- Erin Whitfield
- Rachel Woodard
- and more!!