

Figure 1: GRA 4 Environmental Sensitive Sites + Operational Divisions Overview

ACP 1 – Mendocino County

9812 Mendocino County (GRA 4).....	3
9812.1 Geographic Response Strategies for Environmental Sensitive Sites.....	4
9812.1.1 GRA 4 Site Index	4
9812.2 Response Summary Tables	111
9812.3 Lists of Economic Resources Susceptible to Oiling	116

Figure 1: GRA 4 Environmental Sensitive Sites + Operational Divisions Overview 1

9812 Mendocino County (GRA 4)

Mendocino County GRA 4 extends from the Humboldt County border approximately three miles south of Shelter Cove for 90 miles to the Sonoma County border at the Gualala River. There are 33 Environmental Sensitive Sites in Mendocino County. The Mendocino County shoreline is variable including a mix of nearshore and offshore rocks, exposed rocky shore and headlands, wave-cut platforms, fine to medium-grained sand beaches, coarse-grained sand beaches, mixed sand and gravel beaches, and gravel beaches and much of it is rugged and inaccessible. There are also several large coastal estuaries with salt- and brackish-water marshes and vegetated low banks including the Big, Navarro and Noyo River estuaries. Fort Bragg's Noyo Harbor has been modified and includes riprap and sheltered, solid man-made structures. Many sites in GRA 2 are very remote and have no onsite response strategies but this does not preclude their environmental sensitivity and inclusion in ACP 1

9812.1 Geographic Response Strategies for Environmental Sensitive Sites

9812.1.1 GRA 4 Site Index

Site #	Site Name	Page #
1-400	Morgan Rock	5
1-402	Seal Rocks	8
1-404	Jackass Creek	11
1-406	Little Jackass Creek	14
1-408	Usal Creek	17
1-410	Shoreline Rock	20
1-412	Soldier Frank Point	23
1-414	Rockport Bay and Cottaneva Creek	26
1-416	Hardy Creek	29
1-430	Ten Mile River	32
1-432	Inglenook Creek and Sandhill Lake Creek	35
1-440	Pudding Creek	38
1-442	Soldier Point	41
1-444	Noyo Harbor Entrance and Dolphin Cove	44
1-448	South Fort Bragg	47
1-452	Caspar Point	50
1-454	Caspar Creek and Doyle Creek	53
1-456	Pt Cabrillo to Russian Gulch	58
1-458	Mendocino Headlands State Park	61
1-460	Big River	64
1-462	Mendocino Bay	67
1-464	Van Damme State Park and Little River	70
1-466	Dark Gulch	74
1-468	Albion River	77
1-470	Salmon Point and Big Salmon Creek	81
1-472	Navarro River State Park	84
1-474	Greenwood Creek to Cuffey's Cove	87
1-476	Bonee Gulch	90
1-478	Elk Creek	93
1-480	Irish Gulch	97
1-482	Alder Creek	100
1-484	Garcia River and Manchester State Beach	103
1-486	Point Arena	108

1-400-C Site Summary - Morgan Rock**1-400-C****County:** Mendocino **ACP Division/Segment:** MN - A - S01**NOAA Chart:** 18620**Map Book:** CA Road Atlas**Decimal Degrees:** 39.91697 -123.94754**Site Description:**

These remote offshore rocks are managed by the BLM as part of the California Coastal National Monument. The shoreline is within Sinkyone Wilderness State Park. Offshore rock. Lies about 500 feet offshore.

Seabirds, marine mammals including Pacific harbor seal haul-out areas (01-12), groundfish (EFH).

Resources at Risk:*ESI and Habitat:* 1A Exposed Rocky Shore**List of Resources at Risk:**

	Resource Name	Status	Presence	Sensitivity
Birds	black oystercatcher	FP	Year-round	Mar-Sep
Birds	marbled murrelet	FT, SE	Year-round	
Birds	pigeon guillemot	FP	Year-round	Mar-Sep
Birds	pelagic cormorant	FP	Year-round	Mar-Sep
Mammals	harbor seal	FP	Year-round	
Mammals	California sea lion	FP	Year-round	

FT-Federally Threatened, FE-Federally Endangered, FP-Federally Protected, SE-State Endangered, ST-State Threatened, SP -State Protected, SR-State Rare, SSC-Species of Special Concern, BGEPA-Bald and Golden Eagle Protection Act, SSSP-State Special Status Species

List of Key Contacts:

Type	Name/Title	Organization	Phone
C	/Coordinator	Native American Heritage Commission	(916) 373-3710
C	/Coordinator	Northwest Information Center	(707) 588-8455
O	/24hr	CalFire Howard Forest Emergency Command	(707) 459-5336
O	/	Mendocino County Sheriff's Department	(707) 463-4086
O	/Supervisor Ranger (24hr)	NORCOM State Parks Dispatch	(916) 358-1300
O	/	Sinkyone Intertribal Wilderness Council	(707) 468-9500
T	/	Bureau of Land Management	(707) 825-2300
T	/	California State Parks North Coast District	(707) 445-6547
T	/	NOAA National Marine Fisheries Service-Arcata	(707) 822-7201

C – Cultural, Historic, Archaeological; E – Entry/Owner/Access; O – Other; S – Safety; T – Trustee; X – Exclusion or Security

Additional Site Summary Comments:

Breeding seabirds will use these rocks for nesting in the spring. Offshore rocks provide roosting and nesting habitat for birds and haulout locations for marine mammals. Care should be taken so that response activities do not flush wildlife from these areas. The rocks are sensitive to human intrusion year round, especially during nesting season (03-09) when the adults are on eggs and until the young have fledged from the nest. The offshore rocks have cultural significance for local tribes.

For further information about coastal access in this area, please refer to the California Coastal Commission's California Coastal Access Guide. For photos of the coastline in this area, please refer to the California Coastal Records Project (www.californiacoastline.org).

Cultural, Historical, and Archeological sites are known to exist in the area, however, the exact locations of these sites must be ascertained by contacting the Native American Heritage Commission at (916) 373-3710, the State Office of Historical Preservation (916) 445-7000, and/or the Northwest Information Center (707) 588-8455.

Concerns and Advice to Responders:

The rugged coastline will prevent on shore response over most of this area. Off site measures including dispersants should be considered when a spill threatens to impact this area. Overflights should be careful to maintain flight path and altitude clearance distances that are large enough to prevent the flushing of birds and marine mammals from their nests, roosts, and haulouts on the offshore rocks in this area.

Hazard and Restrictions:

Extreme current, high energy shoreline, offshore rocks

Site Strategies:**Site Validation Level: II**

Strategy: 1-400.1 Objective: No Onsite Options: Consider Offshore Containment/Recovery/ART

Strategy: This site is best protected by preventing the oil from arriving here, when possible. Off-site response options including dispersants should be considered.

Table of Response Resources

Last Page Update**Logistics:**

Directions: Inaccessible from land, visible from Sinkyone Trail near Bear Harbor. From Eureka, go south on Hwy 101. Take Redway Exit 639B at M.P. 11.653 and follow Redwood Dr into to Redway, turn right on Shelter Cove-Briceland Road. Continue on this road to Thorn Junction at large fork in the road, turn left on Briceland Rd and follow through Whitethorn toward Bear Harbor and State Parks Needle Rock Visitor Center.

Land Access: N/A

On-Water Limitations: Nearest launch is Shelter Cove

Facilities, Staging Areas, Command Posts, Available Equipment: N/A

Communications Problems: Remote, limited communications



Imagery: NAIP 2010 (Summer) 4-Band

1-402-B Site Summary - Seal Rocks**1-402-B****County:** Mendocino **ACP Division/Segment:** MN - A - S02**NOAA Chart:** 18620**Map Book:** CA Road Atlas**Decimal Degrees:** 39.90207 -123.92694**Site Description:**

These remote offshore rocks are managed by the BLM as part of the California Coastal National Monument. The shoreline is within Sinkyone Wilderness State Park. Offshore rocks, shoreline is mixed sand and gravel beaches and wavecut platforms.

Seabirds, marine mammals, Pacific harbor seal haul out areas (01-12), groundfish (EFH).

Resources at Risk:

ESI and Habitat: 1A Exposed Rocky Shore

List of Resources at Risk:

	Resource Name	Status	Presence	Sensitivity
Birds	bird rookeries		Year-round	Mar-Sep
Birds	marbled murrelet	FT, SE	Year-round	
Mammals	harbor seal	FP	Year-round	
Mammals	California sea lion	FP	Year-round	

FT-Federally Threatened, FE-Federally Endangered, FP-Federally Protected, SE-State Endangered, ST-State Threatened, SP -State Protected, SR-State Rare, SSC-Species of Special Concern, BGEPA-Bald and Golden Eagle Protection Act, SSSP-State Special Status Species

List of Key Contacts:

Type	Name/Title	Organization	Phone
C	/Coordinator	Native American Heritage Commission	(916) 373-3710
C	/Coordinator	Northwest Information Center	(707) 588-8455
O	/24hr	CalFire Howard Forest Emergency Command	(707) 459-5336
O	/	Mendocino County Sheriff's Department	(707) 463-4086
O	/Supervisor Ranger (24hr)	NORCOM State Parks Dispatch	(916) 358-1300
O	/	Sinkyone Intertribal Wilderness Council	(707) 468-9500
T	/	Bureau of Land Management	(707) 825-2300
T	/	California State Parks North Coast District	(707) 445-6547
T	/	NOAA National Marine Fisheries Service-Arcata	(707) 822-7201
T	/	US Fish and Wildlife Service-Arcata Field Office	(707) 822-7201

C – Cultural, Historic, Archaeological; E – Entry/Owner/Access; O – Other; S – Safety; T – Trustee; X – Exclusion or Security

Additional Site Summary Comments:

Breeding seabirds will use these rocks for nesting in the spring. Offshore rocks provide roosting and nesting habitat for birds and haulout locations for marine mammals. Care should be taken so that response activities do not flush wildlife from these areas. The rocks are sensitive to human intrusion year round, especially during nesting season (03-09) when the adults are on eggs and until the young have fledged from the nest. The offshore rocks have cultural significance for local tribes.

For further information about coastal access in this area, please refer to the California Coastal Commission's California Coastal Access Guide. For photos of the coastline in this area, please refer to the California Coastal Records Project (www.californiacoastline.org).

Cultural, Historical, and Archeological sites are known to exist in the area, however, the exact locations of these sites must be ascertained by contacting the Native American Heritage Commission at (916) 373-3710, the State Office of Historical Preservation (916) 445-7000, and/or the Northwest Information Center (707) 588-8455.

Concerns and Advice to Responders:

The rugged coastline will prevent onshore response over most of this area. Off-site measures including dispersants should be considered when a spill threatens to impact this area. Overflights should be careful to maintain flight path and altitude clearance distances that are large enough to prevent the flushing of birds and marine mammals from their nests, roosts, and haulouts on the offshore rocks in this area.

Hazard and Restrictions:

Extreme current, high energy shoreline, offshore rocks.

Site Strategies:

Site Validation Level: II

Strategy: 1-402.1 Objective: No Onsite Options: Consider Offshore Containment/Recovery/ART

Strategy: This site is best protected by preventing the oil from arriving here, when possible. Off-site response options including dispersants should be considered.

Table of Response Resources

Last Page Update

Logistics:

Directions: Inaccessible from land.

Land Access: N/A

On-Water Limitations: Nearest launch is Shelter Cove

Facilities, Staging Areas, Command Posts, Available Equipment: N/A

Communications Problems: Remote, limited communications



1-404-A Site Summary - Jackass Creek**1-404-A****County:** Mendocino **ACP Division/Segment:** MN - A - S02**NOAA Chart:** 18620**Map Book:** CA Road Atlas**Decimal Degrees:** 39.88077 -123.91574**Site Description:**

Jackass Creek is a remote location with a very small tidal inlet within Sinkyone Wilderness State Park near the historic logging camp of Wheeler. Site is also associated with BLM's California Coastal National Monument resources. Any response is limited to offshore access or by foot traffic only. Small tidal estuary within the Sinkyone Wilderness. Trustees recommend against on-site response. Habitat damage could result from intrusive response. The inlet shoreline consists of coarse-grained sand and granules. Sensitive habitats, oiling of estuary is primary concern (01-12). Offshore rocks in area.

Shorebirds and seabirds abundant (01-12), peregrine falcon (01-12), Pacific harbor seals abundant in area, anadromous salmonids include coho (FE/SE) and chinook (FT) salmon, steelhead trout (FT): all life stages, estuary use year round, leafy reed grass (SR) and Oregon coast paintbrush (CNPS List 2B.2)(01-12).

Resources at Risk:

ESI and Habitat: 4 Coarse-grained sand beaches
1A Exposed Rocky Shore

List of Resources at Risk:

	Resource Name	Status	Presence	Sensitivity
Fish	coho salmon - south of Punta Gorda	FE, SE	Year-round	Nov-Apr
Fish	steelhead - Central/Northern California	FT	Year-round	Nov-Apr
Fish	chinook salmon - Winter-run	FE, SE	Year-round	Oct-May
Mammals	harbor seal	FP	Year-round	
Plants	leafy reed grass	SR	Year-round	May-Sep

FT-Federally Threatened, FE-Federally Endangered, FP-Federally Protected, SE-State Endangered, ST-State Threatened, SP -State Protected, SR-State Rare, SSC-Species of Special Concern, BGEPA-Bald and Golden Eagle Protection Act, SSSP-State Special Status Species

List of Key Contacts:

Type	Name/Title	Organization	Phone
C	/Coordinator	Native American Heritage Commission	(916) 373-3710
C	/Coordinator	Northwest Information Center	(707) 588-8455
O	/24hr	CalFire Howard Forest Emergency Command	(707) 459-5336
O	/	Mendocino County Sheriff's Department	(707) 463-4086
O	/Supervisor Ranger (24hr)	NORCOM State Parks Dispatch	(916) 358-1300
O	/	Sinkyone Intertribal Wilderness Council	(707) 468-9500
T	/	California State Parks North Coast District	(707) 445-6547
T	/	NOAA National Marine Fisheries Service-Arcata	(707) 822-7201
T	/	US Fish and Wildlife Service-Arcata Field Office	(707) 822-7201

C – Cultural, Historic, Archaeological; E – Entry/Owner/Access; O – Other; S – Safety; T – Trustee; X – Exclusion or Security

Additional Site Summary Comments:

Breeding seabirds will use these rocks for nesting in the spring. Offshore rocks provide roosting and nesting habitat for birds and haulout locations for marine mammals. Care should be taken so that response activities do not flush wildlife from these areas. The rocks are sensitive to human intrusion year round, especially during nesting season (03-09) when the adults are on eggs and until the young have fledged from the nest. The offshore rocks have cultural significance for local tribes.

For further information about coastal access in this area, please refer to the California Coastal Commission's California Coastal Access Guide. For photos of the coastline in this area, please refer to the California Coastal Records Project (www.californiacoastline.org).

Cultural, Historical, and Archeological sites are known to exist in the area, however, the exact locations of these sites must be ascertained by contacting the Native American Heritage Commission at (916) 373-3710, the State Office of Historical Preservation (916) 445-7000, and/or the Northwest Information Center (707) 588-8455.

Concerns and Advice to Responders:

Trustees advise against on-site response. Habitat damage could result from intrusive response.

Hazard and Restrictions:**Site Strategies:****Site Validation Level: II**

Strategy: 1-404.1 Objective: No Onsite Options: Consider Offshore Containment/Recovery/ART

Strategy: This site is best protected by preventing the oil from arriving here, when possible. Off-site response options including dispersants should be considered.

Table of Response Resources

Last Page Update**Logistics:**

Directions: Take Hwy 101 to Hwy 1 at Leggett, go south on Hwy for 14.6 miles 1 to M.P. 90.91. Take Usal Road (4WD may be required at times) north 9.5 miles to Usal Beach Campground and the southern Sinkyone trailhead. Access to Jackass Creek is limited to foot traffic only from either here or the Bear Harbor trailhead (see site 1-400) in the north. Maintenance of roads to Jackass Creek ceased when the area became a State Park Wilderness. Contact Sinkyone State Park to discuss access.

Land Access: Very limited, foot access only

On-Water Limitations: Bear Harbor is not improved. Shallow draft vessels only. Nearest launch is Shelter Cove or Noyo Harbor.

Facilities, Staging Areas, Command Posts, Available Equipment: Small unimproved State Parks campground at Usal Creek.

Communications Problems: Remote, limited communications

Additional Operational Comments: Usal Rd is poorly marked at Hwy 1. Site is within designated Wilderness. Response and access is limited.



1-406-B Site Summary - Little Jackass Creek**1-406-B****County:** Mendocino **ACP Division/Segment:** MN - A - S02**NOAA Chart:** 18620**Map Book:** CA Road Atlas**Decimal Degrees:** 39.86047 -123.90173**Site Description:**

Little Jackass Creek is a remote location with a very small tidal inlet within Sinkyone Wilderness State Park. Site is associated with BLM's California Coastal National Monument resources. Any response is limited to offshore access or by foot traffic only. Small tidal inlet within the Sinkyone Wilderness. Trustees recommend against on-site response. Habitat damage could result from intrusive response. Sensitive habitats. Oiling of estuary is primary concern (01-12). Mixed sand and gravel beaches and exposed rocky shoreline.

Seabirds, shorebirds, marine mammals, California sea lion haul out (largest mainland haul out in California: 05-08), Pacific harbor seal haul out, 900+ animals observed. Anadromous salmonids: coho (FE/SE) and chinook salmon (FT), steelhead trout (FT): all life stages, estuary use year round.

Resources at Risk:*ESI and Habitat:* 5 Mixed sand and gravel beaches

1A Exposed Rocky Shore

6A Gravel Beach

List of Resources at Risk:

	Resource Name	Status	Presence	Sensitivity
Birds	marbled murrelet	FT, SE	Year-round	
Fish	coho salmon - south of Punta Gorda	FE, SE	Year-round	Nov-Apr
Fish	steelhead - Central/Northern California	FT	Year-round	Nov-Apr
Fish	Pacific lamprey	SSC	Year-round	
Fish	chinook salmon - Winter-run	FE, SE	Year-round	Oct-May
Mammals	harbor seal	FP	Year-round	
Mammals	California sea lion	FP	Year-round	

FT-Federally Threatened, FE-Federally Endangered, FP-Federally Protected, SE-State Endangered, ST-State Threatened, SP -State Protected, SR-State Rare, SSC-Species of Special Concern, BGEPA-Bald and Golden Eagle Protection Act, SSSP-State Special Status Species

List of Key Contacts:

Type	Name/Title	Organization	Phone
C	/Coordinator	Native American Heritage Commission	(916) 373-3710
C	/Coordinator	Northwest Information Center	(707) 588-8455
O	/24hr	CalFire Howard Forest Emergency Command	(707) 459-5336
O	/	Mendocino County Sheriff's Department	(707) 463-4086
O	/Supervisor Ranger (24hr)	NORCOM State Parks Dispatch	(916) 358-1300
O	/	Sinkyone Intertribal Wilderness Council	(707) 468-9500
T	/	California State Parks North Coast District	(707) 445-6547
T	/	NOAA National Marine Fisheries Service-Arcata	(707) 822-7201
T	/	US Fish and Wildlife Service-Arcata Field Office	(707) 822-7201

C – Cultural, Historic, Archaeological; E – Entry/Owner/Access; O – Other; S – Safety; T – Trustee; X – Exclusion or Security

Additional Site Summary Comments:

Breeding seabirds will use these rocks for nesting in the spring. Offshore rocks provide roosting and nesting habitat for birds and haulout locations for marine mammals. Care should be taken so that response activities do not flush wildlife from these areas. The rocks are sensitive to human intrusion year round, especially during nesting season (03-09) when the adults are on eggs and until the young have fledged from the nest. The offshore rocks have cultural significance for local tribes.

For further information about coastal access in this area, please refer to the California Coastal Commission's California Coastal Access Guide. For photos of the coastline in this area, please refer to the California Coastal Records Project (www.californiacoastline.org).

Cultural, Historical, and Archeological sites are known to exist in the area, however, the exact locations of these sites must be ascertained by contacting the Native American Heritage Commission at (916) 373-3710, the State Office of Historical Preservation (916) 445-7000, and/or the Northwest Information Center (707) 588-8455.

Concerns and Advice to Responders:

Sensitive habitats, oiling of estuary is primary concern (01-12). Trustees recommend against on-site response. Habitat damage could result from intrusive response.

Hazard and Restrictions:**Site Strategies:****Site Validation Level: II**

Strategy: 1-406.1 Objective: No Onsite Options: Consider Offshore Containment/Recovery/ART
Strategy: This site is best protected by preventing the oil from arriving here, when possible. Off-site response options including dispersants should be considered.

Table of Response Resources

Last Page Update**Logistics:**

Directions: Take Hwy 101 to Hwy 1 at Leggett, go south on Hwy 1 for 14.6 miles to M.P. 90.91. Take Usal Road (4WD may be required at times) north 9.5 miles to Usal Beach Campground and the southern Sinkyone trailhead. Access to Little Jackass Creek is limited to foot traffic only from either here or the Bear Harbor trailhead (see site 1-400) in the north. Maintenance of roads to Little Jackass Creek ceased when the area became a State Park Wilderness. Contact Sinkyone State Park to discuss access.

Land Access: Very limited. Foot traffic only.

On-Water Limitations: Nearest launch is Shelter Cove or Noyo Harbor

Facilities, Staging Areas, Command Posts, Available Equipment: Small unimproved campground at Usal Creek.

Communications Problems: Remote, limited communications

Additional Operational Comments: Usal Rd is poorly marked at Hwy 1. Site is within designated Wilderness. Response is limited.



Imagery: NAIP 2010 (Summer) 4-Band

1-408-A Site Summary - Usal Creek**1-408-A****County:** Mendocino **ACP Division/Segment:** MN - A - S02 MN - A - S03**NOAA Chart:** 18620 **Map Book:** CA Road Atlas **Decimal Degrees:** 39.83047 -123.85073**Site Description:**

This site is a small remote tidal inlet and estuary within the Sinkyone Wilderness State Park. Trustees recommend no response within the State Park. Beach consists of coarse grained sand and pebbles. The creek mouth will frequently close from the ocean during seasons of low rainfall. The creek terminates on a high energy sandy beach with rocky cliff beaches to the north and south of this area. Oiling of estuary is primary concern (01-12).

Seabirds, shorebirds, raptors, Pacific harbor seals common throughout area. Anadromous salmonids: coho salmon (FE/SE) and chinook salmon (FT), steelhead trout (FT): all life stages, estuary use year round. Tidewater goby (FE, SSC)(01-12) in estuary, foothill yellow-legged and northern red-legged frogs (both SSC) further upstream in riparian. Night smelt and surf smelt spawn on the beach near entrance to Usal Creek south to Shoreline Rock (04-08), surfperch spawn in area, Mendocino Coast paintbrush (CNPS 1B.2).

Resources at Risk:*ESI and Habitat:* 4 Coarse-grained sand beaches

5 Mixed sand and gravel beaches

List of Resources at Risk:

	Resource Name	Status	Presence	Sensitivity
Amphibians	Northern red-legged frog	SSC	Year-round	
Birds	marbled murrelet	FT, SE	Year-round	
Birds	peregrine falcon	FP, SP	Year-round	
Fish	coho salmon - south of Punta Gorda	FE, SE	Year-round	
Fish	steelhead - Central/Northern California	FT	Year-round	
Mammals	pinnipeds	FP	Year-round	
Plants	Mendocino coast paintbrush		Year-round	

FT-Federally Threatened, FE-Federally Endangered, FP-Federally Protected, SE-State Endangered, ST-State Threatened, SP -State Protected, SR-State Rare, SSC-Species of Special Concern, BGEPA-Bald and Golden Eagle Protection Act, SSSP-State Special Status Species

List of Key Contacts:

Type	Name/Title	Organization	Phone
C	/Coordinator	Native American Heritage Commission	(916) 373-3710
C	/Coordinator	Northwest Information Center	(707) 588-8455
O	/24hr	CalFire Howard Forest Emergency Command	(707) 459-5336
O	/	Mendocino County Sheriff's Department	(707) 463-4086
O	/Supervisor Ranger (24hr)	NORCOM State Parks Dispatch	(916) 358-1300
O	/	Sinkyone Intertribal Wilderness Council	(707) 468-9500
T	/	California Dept of Fish and Wildlife, Fort Bragg	(707) 964-9078
T	/	California State Parks North Coast District	(707) 445-6547
T	/	NOAA National Marine Fisheries Service-Arcata	(707) 822-7201
T	/	US Fish and Wildlife Service-Arcata Field Office	(707) 822-7201

C – Cultural, Historic, Archaeological; E – Entry/Owner/Access; O – Other; S – Safety; T – Trustee; X – Exclusion or Security

Additional Site Summary Comments:

For further information about coastal access in this area, please refer to the California Coastal Commission's California Coastal Access Guide. For photos of the coastline in this area, please refer to the California Coastal Records Project (www.californiacoastline.org).

Cultural, Historical, and Archeological sites are known to exist in the area, however, the exact locations of these sites must be ascertained by contacting the Native American Heritage Commission at (916) 373-3710, the State Office of Historical Preservation (916) 445-7000, and/or the Northwest Information Center (707) 588-8455.

Concerns and Advice to Responders:

Oiling of estuary is the primary concern throughout the year. The rugged coastline will prevent onshore response over most of this area. Off-site measures including dispersants should be considered when a spill threatens to impact this area. Overflights should be careful to maintain flight path and altitude clearance distances that are large enough to prevent the flushing of birds and marine mammals from their nests, roosts, and haulouts on the offshore rocks in this area.

Hazard and Restrictions:

Extreme currents, high energy shoreline, access road narrow and steep, very remote location with limited amenities.

Site Strategies:

Site Validation Level: II

Strategy: 1-408.1 Objective: Assess on-site conditions before responding to this remote location.

Strategy: Perform an overflight or send in a Shoreline Clean-up Assessment Team (SCAT team) to assess Usal Road access, the prevailing site conditions, and if equipment deployment or precleaning activities would be effective. This site is best protected by preventing the oil from arriving here, when possible. Off-site response options including dispersants should be considered.

Table of Response Resources

Equipment	Sub-Type	Size	Unit	QTY	Unit	Last Page Update
helicopter				1		
Staff				2		

Logistics:

Directions: Take Hwy 101 to Hwy 1 at Leggett, go south on Hwy 1 for 14.6miles to M.P. 90.91. Take Usal Road (4WD may be required at times) north 9.5 miles to Usal Beach Campground. This is also the location of the southern Sinkyone trailhead.

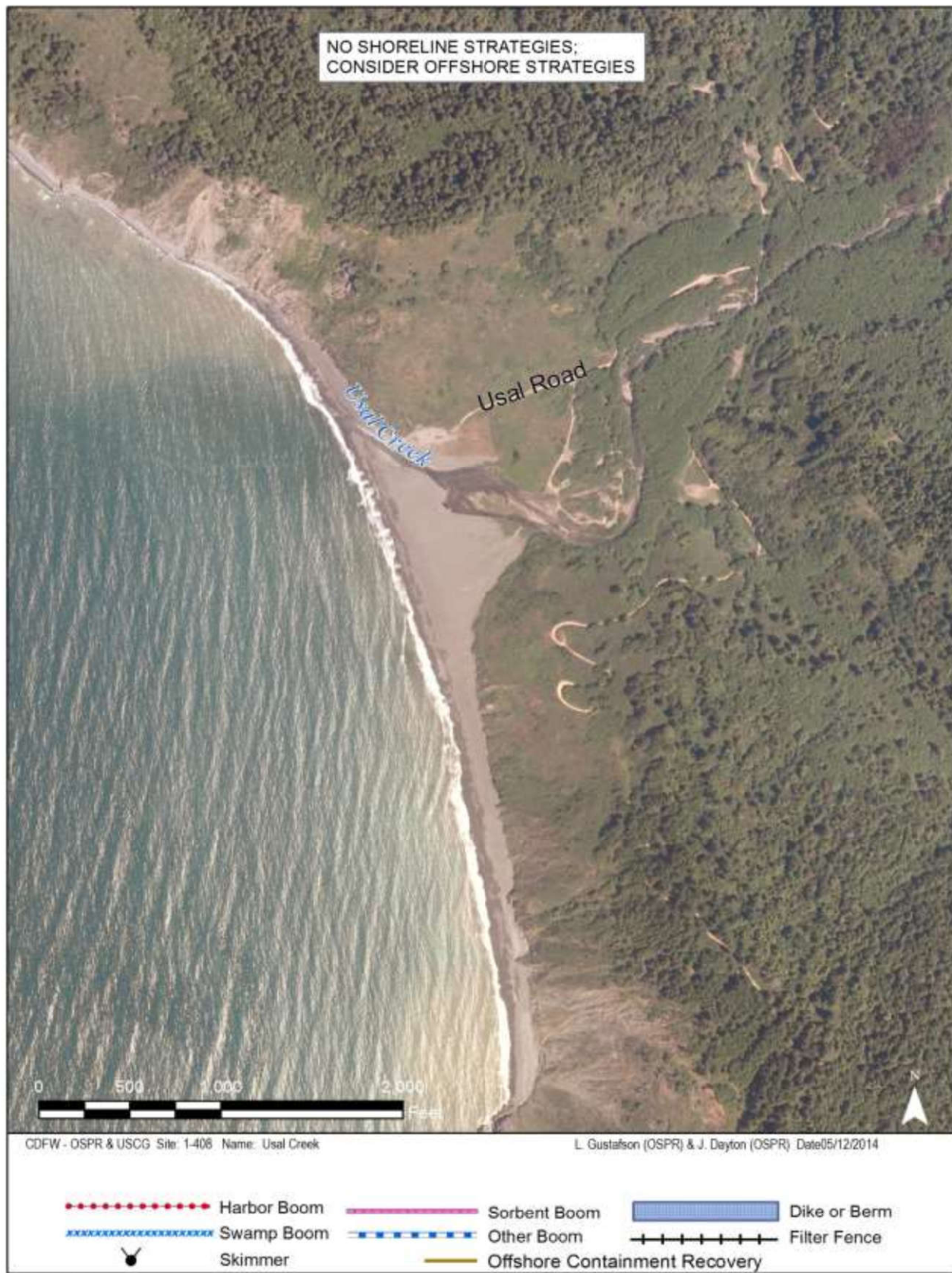
Land Access: Medium truck & 4WD access on dirt roads.

On-Water Limitations: No launch facilities are available at this site. Closest launch in Shelter Cove or Noyo Harbor.

Facilities, Staging Areas, Command Posts, Available Equipment: This site is suitable for staging local response equipment only. Consider helicopter lifts for response equipment. An unimproved campground and pit toilets are the only facilities in this remote location.

Communications Problems: Remote, limited communications

Additional Operational Comments: Usal Rd is poorly marked at Hwy 1.



1-410-A Site Summary - Shoreline Rock**1-410-A****County:** Mendocino **ACP Division/Segment:** MN - A - S03**NOAA Chart:** 18620**Map Book:** CA Road Atlas**Decimal Degrees:** 39.82067 -123.84893**Site Description:**

This remote site includes nearshore and offshore rocks managed by the BLM as part of the California Coastal National Monument and is less than a mile south of Usal Beach. Nearshore and offshore rocks, shoreline is exposed, rocky shores and wave-cut platforms, the beach to the north consists of coarse sediments.

Seabird rookeries (03-09): pelagic cormorant, pigeon guillemot, western gull; marine mammals, red abalone, groundfish (EFH).

Resources at Risk:*ESI and Habitat:* 1A Exposed Rocky Shore

6A Gravel Beach

2A Exposed wave-cut platforms in bedrock, mud, or clay

List of Resources at Risk:

	Resource Name	Status	Presence	Sensitivity
Birds	peregrine falcon	FP, SP	Year-round	
Birds	pelagic cormorant	FP	Year-round	Mar-Sep
Birds	pigeon guillemot	FP	Year-round	Mar-Sep
Birds	western gull	FP	Year-round	Mar-Sep
Birds	marbled murrelet	FT, SE	Year-round	
Mammals	harbor seal	FP	Year-round	
Mammals	California sea lion	FP	Year-round	

FT-Federally Threatened, FE-Federally Endangered, FP-Federally Protected, SE-State Endangered, ST-State Threatened, SP -State Protected, SR-State Rare, SSC-Species of Special Concern, BGEPA-Bald and Golden Eagle Protection Act, SSSP-State Special Status Species

List of Key Contacts:

Type	Name/Title	Organization	Phone
C	/Coordinator	Native American Heritage Commission	(916) 373-3710
C	/Coordinator	Northwest Information Center	(707) 588-8455
O	/24hr	CalFire Howard Forest Emergency Command	(707) 459-5336
O	/	Mendocino County Sheriff's Department	(707) 463-4086
T	/	California State Parks North Coast District	(707) 445-6547
T	/	NOAA National Marine Fisheries Service-Arcata	(707) 822-7201
T	/	US Fish and Wildlife Service-Arcata Field Office	(707) 822-7201

C – Cultural, Historic, Archaeological; E – Entry/Owner/Access; O – Other; S – Safety; T – Trustee; X – Exclusion or Security

Additional Site Summary Comments:

Breeding seabirds will use these rocks for nesting in the spring. Offshore rocks provide roosting and nesting habitat for birds and haulout locations for marine mammals. Care should be taken so that response activities do not flush wildlife from these areas. The rocks are sensitive to human intrusion year round, especially during nesting season (03-09) when the adults are on eggs and until the young have fledged from the nest. The offshore rocks have cultural significance for local tribes.

For further information about coastal access in this area, please refer to the California Coastal Commission's California Coastal Access Guide. For photos of the coastline in this area, please refer to the California Coastal Records Project (www.californiacoastline.org).

Cultural, Historical, and Archeological sites are known to exist in the area, however, the exact locations of these sites must be ascertained by contacting the Native American Heritage Commission at (916) 373-3710, the State Office of Historical Preservation (916) 445-7000, and/or the Northwest Information Center (707) 588-8455.

Concerns and Advice to Responders:

The rugged coastline will prevent on shore response over most of this area. Off-site measures including dispersants should be considered when a spill threatens to impact this area. Overflights should be careful to maintain flight path and altitude clearance distances that are large enough to prevent the flushing of birds and marine mammals from their nests, roosts, and haulouts on the offshore rocks in this area.

Hazard and Restrictions:

Extreme currents, high energy shoreline, offshore rocks

Site Strategies:

Site Validation Level: II

Strategy: 1-410.1 Objective: No Onsite Options: Consider Offshore Containment/Recovery/ART

Strategy: This site is best protected by preventing the oil from arriving here, when possible. Off-site response options including dispersants should be considered.

Table of Response Resources

Last Page Update

Logistics:

Directions: Take Hwy 101 to Hwy 1 at Leggett, go south on Hwy 1 for 14.6 miles to M.P. 90.91. Take Usal Road (4WD may be required at times) north 9.5 miles to Usal Beach Campground. Shoreline Rock is offshore about .6 miles south of the mouth of Usal Creek. Contact Sinkyone Wilderness State Park.

Land Access: Narrow dirt road may require 4WD in wet season

On-Water Limitations: Offshore rocks, limited access, no launch facilities

Facilities, Staging Areas, Command Posts, Available Equipment: Small unimproved campground at Usal Creek.

Communications Problems: Remote, limited communications



Imagery: NAIP 2010 (Summer) 4-Band

1-412-A Site Summary - Soldier Frank Point**1-412-A****County:** Mendocino **ACP Division/Segment:** MN - B - S01**NOAA Chart:** 18620**Map Book:** CA Road Atlas**Decimal Degrees:** 39.75708 -123.83803**Site Description:**

This site is a rocky point on the map that has very limited on scene response options. The site is owned by Mendocino Redwood company. Offshore rocks in the area are managed by BLM as part of the California Coastal National Monument. Site is within the following State Marine Protected Area: Double Cone Rock SMCA. The site is comprised of exposed rock cliffs, wavecut platforms and exposed vertical seawalls. Strong currents and large waves will preclude on scene response under typical sea conditions.

Seabird rookeries (03-09): pelagic cormorant, pigeon guillemot, marine mammals including Steller sea lions, red abalone, groundfish (EFH).

Resources at Risk:*ESI and Habitat:* 1A Exposed Rocky Shore

2A Exposed wave-cut platforms in bedrock, mud, or clay

5 Mixed sand and gravel beaches

List of Resources at Risk:

	Resource Name	Status	Presence	Sensitivity
Birds	black oystercatcher	FP	Year-round	Mar-Sep
Birds	Brandt's cormorant	FP	Year-round	Mar-Sep
Birds	pelagic cormorant	FP	Year-round	Mar-Sep
Birds	pigeon guillemot	FP	Year-round	Mar-Sep
Birds	western gull	FP	Year-round	Mar-Sep
Birds	marbled murrelet	FT, SE	Year-round	
Mammals	pinnipeds	FP	Year-round	
Mammals	Steller sea lion	FP		

FT-Federally Threatened, FE-Federally Endangered, FP-Federally Protected, SE-State Endangered, ST-State Threatened, SP -State Protected, SR-State Rare, SSC-Species of Special Concern, BGEPA-Bald and Golden Eagle Protection Act, SSSP-State Special Status Species

List of Key Contacts:

Type	Name/Title	Organization	Phone
C	/Coordinator	Native American Heritage Commission	(916) 373-3710
C	/Coordinator	Northwest Information Center	(707) 588-8455
E	/	Mendocino Redwood Company	(707) 463-5111
O	/24hr	CalFire Howard Forest Emergency Command	(707) 459-5336
O	/	Mendocino County Sheriff's Department	(707) 463-4086
T	/	NOAA National Marine Fisheries Service-Arcata	(707) 822-7201
T	/	US Fish and Wildlife Service-Arcata Field Office	(707) 822-7201

C – Cultural, Historic, Archaeological; E – Entry/Owner/Access; O – Other; S – Safety; T – Trustee; X – Exclusion or Security

Additional Site Summary Comments:

Breeding seabirds will use these rocks for nesting in the spring. Offshore rocks provide roosting and nesting habitat for birds and haulout locations for marine mammals. Care should be taken so that response activities do not flush wildlife from these areas. The rocks are sensitive to human intrusion year round, especially during nesting season (03-09) when the adults are on eggs and until the young have fledged from the nest. The offshore rocks have cultural significance for local tribes.

For further information about coastal access in this area, please refer to the California Coastal Commission's California Coastal Access Guide. For photos of the coastline in this area, please refer to the California Coastal Records Project (www.californiacoastline.org).

Cultural, Historical, and Archeological sites are known to exist in the area, however, the exact locations of these sites must be ascertained by contacting the Native American Heritage Commission at (916) 373-3710, the State Office of Historical Preservation (916) 445-7000, and/or the Northwest Information Center (707) 588-8455.

Concerns and Advice to Responders:

The rugged coastline will prevent onshore response over most of this area. Off-site measures including dispersants should be considered when a spill threatens to impact this area. Overflights should be careful to maintain flight path and altitude clearance distances that are large enough to prevent the flushing of birds and marine mammals from their nests, roosts, and haulouts on the offshore rocks in this area.

Hazard and Restrictions:

Extreme current, high energy shoreline, offshore rocks. Private property, locked gate access.

Site Strategies:**Site Validation Level: II**

Strategy: 1-412.1 Objective: No Onsite Options: Consider Offshore Containment/Recovery/ART

Strategy: This site is best protected by preventing the oil from arriving here, when possible. Off-site response options including dispersants should be considered.

Table of Response Resources

Last Page Update**Logistics:**

Directions: Inaccessible rocky headland lying about 2 miles north of Cape Vizcaino. Nearest road is Usal Road. Take Hwy 101 to Hwy 1 at Leggett, go south on Hwy 1 to 14.9 miles, turn west on unmarked dirt road (4WD required at times) just south of Usal Rd.

Land Access: Locked gates. Contact Mendocino Redwood Company. No direct access to site.

On-Water Limitations: Nearest launch and facilities in Fort Bragg

Facilities, Staging Areas, Command Posts, Available Equipment: none

Communications Problems: Remote, limited communications



1-414-A Site Summary - Rockport Bay and Cottaneva Creek**1-414-A****County:** Mendocino **ACP Division/Segment:** MN - B - S01 MN - B - S02**NOAA Chart:** 18620**Map Book:** CA Road Atlas**Decimal Degrees:** 39.73408 -123.82863**Site Description:**

This site includes the tidal estuary at the mouth of Cottaneva Creek. The site is owned by Mendocino Redwood Company. Most offshore rocks in the area are managed by BLM as part of the California Coastal National Monument but some are owned by the same timber company. Site is associated with the following State Marine Protected Area(s): Vizcaino Rock Special Closure. Mixed sand and gravel beach. Minor wetland. Minor freshwater marsh at creek outlet.

Common murre (2004 estimates: ~2200 Rockport Rocks, ~9700 Cape Vizcaino), Brandt's cormorant (~2500, 2002), California brown pelicans (04-11). Seabirds, shorebirds, waterfowl, marine mammals, anadromous salmonids including coho salmon (FE/SE), steelhead trout (FT), chinook salmon (FT): all life stages, estuary use year round. Groundfish (EFH), surfsmelt and night-smelt spawning area (04-08), red abalone, southern torrent salamander upstream nearby in riparian habitat, sensitive vegetation on and near beach including pink sand-verbena, Point Reyes horkelia and Whitney's farewell-to-spring (all CNPS 1B).

Resources at Risk:*ESI and Habitat:* 4 Coarse-grained sand beaches

5 Mixed sand and gravel beaches

1A Exposed Rocky Shore

List of Resources at Risk:

	Resource Name	Status	Presence	Sensitivity
Amphibians	Southern torrent salamander	SSC	Year-round	
Birds	marbled murrelet	FT, SE	Year-round	
Birds	common murre	FP	Year-round	Mar-Sep
Birds	Brandt's cormorant	FP	Year-round	Mar-Sep
Birds	California brown pelican	FP, SP	Year-round	Mar-Sep
Fish	steelhead - Central/Northern California	FT	Year-round	
Plants	sensitive plant community		Year-round	

FT-Federally Threatened, FE-Federally Endangered, FP-Federally Protected, SE-State Endangered, ST-State Threatened, SP -State Protected, SR-State Rare, SSC-Species of Special Concern, BGEPA-Bald and Golden Eagle Protection Act, SSSP-State Special Status Species

List of Key Contacts:

Type	Name/Title	Organization	Phone
C	/Coordinator	Native American Heritage Commission	(916) 373-3710
C	/Coordinator	Northwest Information Center	(707) 588-8455
E	/	Mendocino Redwood Company	(707) 463-5111
O	/24hr	CalFire Howard Forest Emergency Command	(707) 459-5336
O	/	Mendocino County Sheriff's Department	(707) 463-4086
T	/	NOAA National Marine Fisheries Service-Arcata	(707) 822-7201
T	/	US Fish and Wildlife Service-Arcata Field Office	(707) 822-7201

C – Cultural, Historic, Archaeological; E – Entry/Owner/Access; O – Other; S – Safety; T – Trustee; X – Exclusion or Security

Additional Site Summary Comments:

Breeding seabirds will use these rocks for nesting in the spring. Offshore rocks provide roosting and nesting habitat for birds and haulout locations for marine mammals. Care should be taken so that response activities do not flush wildlife from these areas. The rocks are sensitive to human intrusion year round, especially during nesting season (03-09) when the adults are on eggs and until the young have fledged from the nest. The offshore rocks have cultural significance for local tribes.

For further information about coastal access in this area, please refer to the California Coastal Commission's California Coastal Access Guide. For photos of the coastline in this area, please refer to the California Coastal Records Project (www.californiacoastline.org).

Cultural, Historical, and Archeological sites are known to exist in the area, however, the exact locations of these sites must be ascertained by contacting the Native American Heritage Commission at (916) 373-3710, the State Office of Historical Preservation (916) 445-7000, and/or the Northwest Information Center (707) 588-8455.

Concerns and Advice to Responders:

The rugged coastline will prevent onshore response over most of this area. Off-site measures including dispersants should be considered when a spill threatens to impact this area. Overflights should be careful to maintain flight path and altitude clearance distances that are large enough to prevent the flushing of birds and marine mammals from their nests, roosts, and haulouts on the offshore rocks in this area.

Hazard and Restrictions:

Private property, locked gate access.

Site Strategies:**Site Validation Level: II**

Strategy: 1-414.1 Objective: No Onsite Options: Consider Offshore Containment/Recovery/ART

Strategy: This site is best protected by preventing the oil from arriving here, when possible. Off-site response options including dispersants should be considered.

Table of Response Resources

Last Page Update**Logistics:**

Directions: From Hwy 101 in Leggett, take Hwy 1 south toward Fort Bragg. Follow 17.7 miles to private road on right at Rockport (M.P. 87.82). Site is through a locked gate and appx. 0.6 miles down a dirt road. Follow road to left to grassy field (100 yards by 150 yards). This area is accessible to large equipment.

Land Access: Private property. Locked Gates. Contact Mendocino Redwood Company.

On-Water Limitations: No launching facilities, nearest launch in Fort Bragg.

Facilities, Staging Areas, Command Posts, Available Equipment: Grassy field (100 x 150 yds.) on property suitable for local response staging only. No utilities or facilities.

Communications Problems: Remote, limited communications



Imagery: NAIP 2010 (Summer) 4-Band

1-416-A Site Summary - Hardy Creek**1-416-A****County:** Mendocino **ACP Division/Segment:** MN - C - S01**NOAA Chart:** 18620**Map Book:** CA Road Atlas**Decimal Degrees:** 39.71068 -123.80753**Site Description:**

This site is a small tidal inlet at the mouth of Hardy Creek. The site is private property. Offshore rocks in the area are managed by BLM as part of the California Coastal National Monument. Small stream incises a sand and gravel beach and abuts a bedrock bluff on the north side of the valley. The narrow beach has a well developed storm berm. During severe storm conditions the entire beach is overwashed, as evidenced by the presence of large logs up in the marsh on the south side of valley. Any response at this location would occur when oil threatens to enter the marsh by overwashing the berm or when the inlet mouth is open. Marsh system behind beach forms small wetland.

Waterbirds, shorebirds and waterfowl utilize estuary and marsh habitat behind beach. Anadromous salmonids include chinook salmon (FT), coho salmon (FE/SE), steelhead trout (FT): all life stages, estuary use year round. Red abalone. Sensitive plants include bluff wallflower (CNPS 1B.2) and leafy reed grass (SR).

Resources at Risk:*ESI and Habitat:* 5 Mixed sand and gravel beaches

10A Salt - and brackish-water marshes

6B Riprap

List of Resources at Risk:

	Resource Name	Status	Presence	Sensitivity
Birds	marbled murrelet	FT, SE	Year-round	
Birds	shorebirds		JUL-APR	
Birds	waterfowl		OCT-APR	
Fish	steelhead - Central/Northern California	FT	Year-round	
Fish	chinook salmon - Winter-run	FE, SE	Year-round	Oct-May
Plants	bluff wallflower		Year-round	
Plants	leafy reed grass	SR	Year-round	May-Sep

FT-Federally Threatened, FE-Federally Endangered, FP-Federally Protected, SE-State Endangered, ST-State Threatened, SP -State Protected, SR-State Rare, SSC-Species of Special Concern, BGEPA-Bald and Golden Eagle Protection Act, SSSP-State Special Status Species

List of Key Contacts:

Type	Name/Title	Organization	Phone
C	/Coordinator	Native American Heritage Commission	(916) 373-3710
C	/Coordinator	Northwest Information Center	(707) 588-8455
O	/24hr	CalFire Howard Forest Emergency Command	(707) 459-5336
O	/	Mendocino County Sheriff's Department	(707) 463-4086
T	/	California Dept of Fish and Wildlife, Fort Bragg	(707) 964-9078
T	/	NOAA National Marine Fisheries Service-Arcata	(707) 822-7201
T	/	US Fish and Wildlife Service-Arcata Field Office	(707) 822-7201

C – Cultural, Historic, Archaeological; E – Entry/Owner/Access; O – Other; S – Safety; T – Trustee; X – Exclusion or Security

Additional Site Summary Comments:

Breeding seabirds will use these rocks for nesting in the spring. Offshore rocks provide roosting and nesting habitat for birds and haulout locations for marine mammals. Care should be taken so that response activities do not flush wildlife from these areas. The rocks are sensitive to human intrusion year round, especially during nesting season (03-09) when the adults are on eggs and until the young have fledged from the nest. The offshore rocks have cultural significance for local tribes.

For further information about coastal access in this area, please refer to the California Coastal Commission's California Coastal Access Guide. For photos of the coastline in this area, please refer to the California Coastal Records Project (www.californiacoastline.org).

Cultural, Historical, and Archeological sites are known to exist in the area, however, the exact locations of these sites must be ascertained by contacting the Native American Heritage Commission at (916) 373-3710, the State Office of Historical Preservation (916) 445-7000, and/or the Northwest Information Center (707) 588-8455.

Concerns and Advice to Responders:

The rugged coastline will prevent onshore response over most of this area. Off-site measures including dispersants should be considered when a spill threatens to impact this area. Overflights should be careful to maintain flight path and altitude clearance distances that are large enough to prevent the flushing of birds and marine mammals from their nests, roosts, and haulouts on the offshore rocks in this area.

Hazard and Restrictions:

Private property

Site Strategies:**Site Validation Level: II**

Strategy: 1-416.1 Objective: Fly over or visit site to determine if any response is needed

Strategy: This site will probably not benefit from on-site deployment of protection equipment. Site response will likely be limited to oil removal from off the beach.

Table of Response Resources

Equipment	Sub-Type	Size	Unit	QTY	Unit	Last Page Update
helicopter				1		

Logistics:

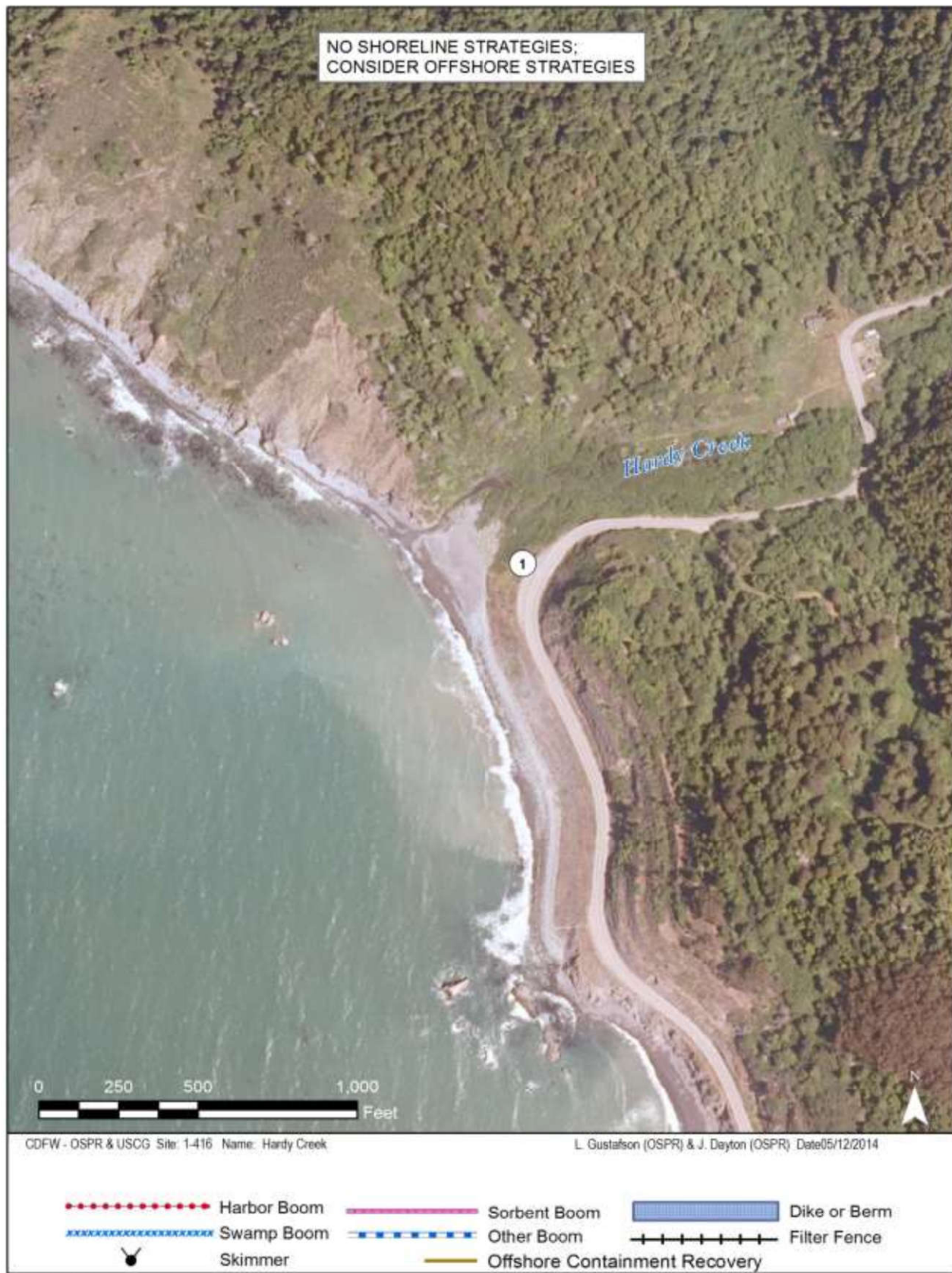
Directions: From Hwy 101 in Leggett, head south on Hwy 1 towards Fort Bragg for 21.6 miles to private road at M.P. 83.78 at Hardy Creek. Follow this access road towards the beach until it terminates at the head of the marsh/wetland. Road ends here, it does not access the beach. Proceed by foot. There is also beach access from a steep foot path from Hwy 1 at M.P. 83.53.

Land Access: Private property. Foot access only.

On-Water Limitations: Closest launch is in Fort Bragg.

Facilities, Staging Areas, Command Posts, Available Equipment: Very small roadside turnout for staging limited local response equipment. No utilities or facilities.

Communications Problems: Remote, limited communications.



1-430-A Site Summary - Ten Mile River**1-430-A****County:** Mendocino **ACP Division/Segment:** MN - D - S01**NOAA Chart:** 18626**Map Book:** CA Road Atlas**Decimal Degrees:** 39.55408 -123.76783**Site Description:**

This site is at the north end of MacKerricher State Park and includes the tidally influenced estuary at the mouth of Ten Mile River. Ownership includes State Parks (south side of river, west of Highway 1 bridge), Caltrans right-of-way, and private property. Site is associated with the following State Marine Protected Area(s): Ten Mile Estuary SMCA, Ten Mile SMR, Ten Mile Beach SMCA. Tidally influenced river mouth crossing a wide sandy beach. Channel fixed alongside bedrock scarp on the north side of valley. A very well developed marsh system exists landward of Hwy 1 bridge (about .33 mile upriver of mouth).

The marsh provides habitat for many kinds of waterfowl and shorebirds that forage there year-round. Salmonid migrations through the estuary occur mostly during high water flow events during winter and spring. Eelgrass and associated communities in estuary, western snowy plover (FT)(01-12): FWS Critical Habitat, nesting period (March 15-Sept 15). Nests directly in sand above high tide line-may include open beach, foredunes, dunes, gravel bars and river mouths. Raptors include osprey and peregrine falcon (01-12); burrowing owls and northern harrier in back dunes. Brant, California brown pelican, harbor seals, river otters, globose dune beetle. Tidewater goby (FE,SSC)(01-12) in estuary, FWS Critical Habitat. Anadromous salmoids include chinook (FT) and coho salmon (FE,SE), and steelhead (FT): spawning runs (09-06), smolts/juveniles (02-08). Surf smelt and night smelt spawning (04-08), surfperch spawn (04-08), juvenile Dungeness crab nursery area (07-10). Sensitive plants include Menzies' wallflower (SE,FE), leafy reed grass (CNPS List 4.2, CA Rare), Mendocino coast paintbrush (CNPS List 1B.2), Howell's spineflower (FE,ST), pink sand-verbena (CNPS 1B.1), Wolf's evening-primrose (CNPS 1B.2).

Resources at Risk:*ESI and Habitat:* 10A Salt - and brackish-water marshes

3A Fine- to medium-grained sand beaches

8A Sheltered scarps in bedrock, mud, or clay

List of Resources at Risk:

	Resource Name	Status	Presence	Sensitivity
Amphibians	foothill yellow-legged frog	SE, SSC	Year-round	Mar-Aug
Birds	Western snowy plover	FT, SSC	Year-round	Mar-Sep
Fish	coho salmon - south of Punta Gorda	FE, SE	Year-round	Nov-Apr
Fish	tidewater goby	FE, SSC	Year-round	
Fish	steelhead - Central/Northern California	FT	Year-round	Nov-Apr
Plants	sensitive plant community		Year-round	
Plants	Menzies' wallflower	FE, SE	Year-round	
Plants	Howell's spineflower	FE, ST	Year-round	

FT-Federally Threatened, FE-Federally Endangered, FP-Federally Protected, SE-State Endangered, ST-State Threatened, SP -State Protected, SR-State Rare, SSC-Species of Special Concern, BGEPA-Bald and Golden Eagle Protection Act, SSSP-State Special Status Species

List of Key Contacts:

Type	Name/Title	Organization	Phone
C	/Coordinator	Native American Heritage Commission	(916) 373-3710
C	/Coordinator	Northwest Information Center	(707) 588-8455
O	/24hr	CalFire Howard Forest Emergency Command	(707) 459-5336
O	/	Mendocino County Sheriff's Department	(707) 463-4086
O	/Supervisor Ranger (24hr)	NORCOM State Parks Dispatch	(916) 358-1300
T	/	California Dept of Fish and Wildlife, Fort Bragg	(707) 964-9078
T	/Sector Superintendent	California State Parks, Mendocino District	(707) 937-5804
T	/	NOAA National Marine Fisheries Service-Arcata	(707) 822-7201
T	/	US Fish and Wildlife Service-Arcata Field Office	(707) 822-7201

C – Cultural, Historic, Archaeological; E – Entry/Owner/Access; O – Other; S – Safety; T – Trustee; X – Exclusion or Security

Additional Site Summary Comments:

For further information about coastal access in this area, please refer to the California Coastal Commission’s California Coastal Access Guide. For photos of the coastline in this area, please refer to the California Coastal Records Project (www.californiacoastline.org).

Cultural, Historical, and Archeological sites are known to exist in the area, however, the exact locations of these sites must be ascertained by contacting the Native American Heritage Commission at (916) 373-3710, the State Office of Historical Preservation (916) 445-7000, and/or the Northwest Information Center (707) 588-8455.

Concerns and Advice to Responders:

Contact State Parks if response here is necessary. Western snowy plover critical habitat present on beach; may require biological monitors to avoid disturbance.

Hazard and Restrictions:

Private property north of the river. Locked gates.

Site Strategies:

Site Validation Level: II

Strategy: 1-430.1 Objective: Boom oil to prevent spread on an incoming tide, and strand oil for easy collection on the south side of the estuary.

Strategy: Boom from the rocky cliff face on the north and strand oil on the sand near the mouth of the river on the southern shore. Note: this is potential western snowy plover habitat.

Table of Response Resources

Equipment	Sub-Type	Size	Unit	QTY	Unit	Last Page Update
Boom	Harbor	600 feet				
Boom	Sorbent	600 feet				
Anchor	Danforth	25 lb		6		
boat	Skiff			2		
Staff	Staff to Deploy			10		
Staff	Staff to Tend			2		

Strategy: 1-430.2 Objective: Shoreline Pre-Clean: Resource Specialist Supervision Required

Strategy: Pre-clean the beach by moving debris above the incoming high tide height using hand crews. Restrict beach access points and keep traffic below the high tide line as this beach may have western snowy plover nests on it.

Table of Response Resources

Equipment	Sub-Type	Size	Unit	QTY	Unit	Last Page Update
Staff	Staff to Deploy			1		

Logistics:

Directions: From Fort Bragg turn north on Hwy 1 and follow for 9.8 miles to Ten Mile River. Exit right onto dirt road at M.P. 69.22. Follow <0.10 Mile. Turn west (left) on small road (locked gate: get access from Caltrans) before main road makes sharp turn to right and descends to base of hill. Follow dirt road for 0.5 miles under Hwy 1 Ten Mile River Bridge to State Park boundary. No vehicle access beyond Natural Preserve sign at Park boundary without authorization. In the event of emergency, all-terrain vehicles would provide the only possible vehicle access. Biological monitoring to avoid disturbance

Land Access: Locked gate access, contact Caltrans or Mendocino Sheriff

On-Water Limitations: Limited small punt hand launch only

Facilities, Staging Areas, Command Posts, Available Equipment: none

Communications Problems: Remote, limited communications



Imagery: NAIP 2010 (Summer) 4-Band

1-432-B Site Summary - Inglebrook Creek and Sandhill Lake Creek**1-432-B****County:** Mendocino **ACP Division/Segment:** MN - D - S01**NOAA Chart:** 18626**Map Book:** CA Road Atlas**Decimal Degrees:** 39.52499 -123.77683**Site Description:**

This site is within MacKerricher State Park managed by State Parks. This site is bounded roughly between the mouths of the two creeks that flow across the wide sandy beaches that are backed by vegetated dunes. Inglebrook Creek and Sandhill Lake Creek (also known as Fen Creek in most State Parks documents) are seasonal creeks that flow across the beach. The presence of woody debris well back into the streams where they cross the dunes indicates considerable tidal and winter storm influence. These seasonal creeks may provide salmonid habitat during high flow regimes. Oil spill response at the mouths of these creeks is not likely to occur under these high flow conditions.

Sensitive resources include marsh habitats within stream mouths and dune vegetation. Western snowy plover (FT)(01-12), FWS Critical Habitat, nesting period (March 15-Sept 15). Nests directly on sand within dunes. Anadromous salmonids: chinook (FT) and coho salmon (FE/SE), steelhead trout (FT): all life stages, estuary use year round. Tidewater goby (FE,SSC) may be present, northern red-legged and foothill yellow-legged frogs (both SSC) in creeks, globose dune beetle (01-12) found within area of two creeks. Sensitive plants including Howell's spineflower (FE,ST), Menzies' wallflower (SE, FE), leafy reed grass (SR), and pink sand-verbena (CNPS 1B.1) are found near the two creeks.

Resources at Risk:

ESI and Habitat: 3A Fine- to medium-grained sand beaches
10A Salt - and brackish-water marshes

List of Resources at Risk:

	Resource Name	Status	Presence	Sensitivity
Amphibians	foothill yellow-legged frog	SE, SSC	Year-round	Mar-Aug
Birds	Western snowy plover	FT, SSC	Year-round	Mar-Oct
Fish	tidewater goby	FE, SSC	Year-round	
Fish	coho salmon - north of Punta Gorda	FT, ST	Year-round	Nov-Apr
Fish	steelhead - Central/Northern California	FT	Year-round	Nov-Apr
Fish	chinook salmon - Winter-run	FE, SE	Year-round	Oct-May
Plants	Howell's spineflower	FE, ST	Year-round	
Plants	Menzies' wallflower	FE, SE	Year-round	

FT-Federally Threatened, FE-Federally Endangered, FP-Federally Protected, SE-State Endangered, ST-State Threatened, SP -State Protected, SR-State Rare, SSC-Species of Special Concern, BGEPA-Bald and Golden Eagle Protection Act, SSSP-State Special Status Species

List of Key Contacts:

Type	Name/Title	Organization	Phone
C	/Coordinator	Native American Heritage Commission	(916) 373-3710
C	/Coordinator	Northwest Information Center	(707) 588-8455
O	/24hr	CalFire Howard Forest Emergency Command	(707) 459-5336
O	/	Mendocino County Sheriff's Department	(707) 463-4086
O	/Supervisor Ranger (24hr)	NORCOM State Parks Dispatch	(916) 358-1300
T	/	California Dept of Fish and Wildlife, Fort Bragg	(707) 964-9078
T	/Sector Superintendent	California State Parks, Mendocino District	(707) 937-5804
T	/	NOAA National Marine Fisheries Service-Arcata	(707) 822-7201
T	/	US Fish and Wildlife Service-Arcata Field Office	(707) 822-7201

C – Cultural, Historic, Archaeological; E – Entry/Owner/Access; O – Other; S – Safety; T – Trustee; X – Exclusion or Security

Additional Site Summary Comments:

For further information about coastal access in this area, please refer to the California Coastal Commission's California Coastal Access Guide. For photos of the coastline in this area, please refer to the California Coastal Records Project (www.californiacoastline.org).

Cultural, Historical, and Archeological sites are known to exist in the area, however, the exact locations of these sites must be ascertained by contacting the Native American Heritage Commission at (916) 373-3710, the State Office of Historical Preservation (916) 445-7000, and/or the Northwest Information Center (707) 588-8455.

Concerns and Advice to Responders:

Clean up at this site would probably be a part of a larger effort to clean the entire beach from Pudding Creek to 10 Mile River. Getting access and controlling public use on this popular recreational bike and jogging path between Pudding Creek and Ward Avenue will require coordination with the local agencies and State Parks.

Hazard and Restrictions:

The site is remote and can only be accessed by foot or from all-terrain vehicles after authorization by State Parks. No access from old Haul Road.

Site Strategies:**Site Validation Level: II**

Strategy: 1-432.1 Objective: General response: clean up after the beach has been oiled.

Strategy: When personnel are sent to this site, they should be prepared to create authorized access corridors across any dunes to the wet sand zone on the beach with State Parks. Workers should generally stay away from the upper intertidal sandy beach habitat where western snowy plover may be nesting. Peak nesting period occurs from March 15-Sept 15.

Table of Response Resources

Last Page Update**Logistics:**

Directions: From Fort Bragg turn north on Hwy 1 and go north about 10 miles to Ten Mile River. Same access as for Ten Mile River (1-430-A) into the general area of the two creeks. Inglenook Creek is about 2 miles south of the mouth of Ten Mile River and is only accessible by foot or all-terrain vehicles after authorization from State Parks. Sandhill Lake Creek (aka Fen Creek) is south of Inglenook Creek by about .4 mile and has similar access restrictions. The access gate near Ten Mile River is locked, but keys can be obtained from Caltrans. Note: no access from old Haul Road but access from south may be authorized from Ward Avenue.

Land Access: Foot or all-terrain vehicles. Locked gates.

On-Water Limitations: Water access is probably not an option at this site.

Facilities, Staging Areas, Command Posts, Available Equipment: None

Communications Problems: Remote, limited communications

Additional Operational Comments: The beach is designated by FWS as western snowy plover Critical Habitat. Contact State Parks prior to initiating any response here for access authorization. These shorebirds lay eggs in small cryptic nests at the upper tidal edge. Responders must keep their activity on paths below this area when working on the beach. Coordinate designated access paths with State Parks to and from the beach to minimize potential impacts from response traffic when working in this area. Authorization and biological monitoring required.



1-440-B Site Summary - Pudding Creek**1-440-B****County:** Mendocino **ACP Division/Segment:** MN - D - S03 MN - E - S01**NOAA Chart:** 18620 **Map Book:** CA Road Atlas **Decimal Degrees:** 39.45909 -123.80863**Site Description:**

This site is located just north of Fort Bragg along Hwy 1. This site is at the southern end of MacKerricher State Park below an old railway bridge that now supports the busy Haul Road Coastal Trail. This site is within the following State Marine Protected Area: MacKerricher SMCA. Site is associated with BLM's California Coastal National Monument resources. Seasonal tidal inlet across wide sandy beach. Intertidal and nearshore seawalls south of the creek entrance, and wave-cut platforms to the north. Some fringing marsh exists about .3 mile upstream. A wooden trestle crosses the creek near the mouth.

The marsh provides habitat for many waterfowl and shorebird species that forage there year-round. Salmonid migrations through the estuary would occur mostly during high water flow events during winter and spring. Sensitive Marsh. Seabirds, shorebirds including black oystercatcher, osprey (01-12), wading and waterbirds. Anadromous salmonids include chinook (FT) and coho salmon (FE,SE), steelhead trout (FT): all life stages, estuary use year round. Tidewater goby (FE,SSC)(01-12), FWS Critical Habitat. Marine resources include barnacles, mussels, associated invertebrates. Numerous sensitive plants near response site including dark-eyed gilia, Mendocino Coast paintbrush, perennial goldfields, round-headed Chinese-houses (all CNPS 1B.2), Menzies' wallflower (FE,SE).

Resources at Risk:

- ESI and Habitat:* 3A Fine- to medium-grained sand beaches
 8A Sheltered scarps in bedrock, mud, or clay
 10A Salt - and brackish-water marshes

List of Resources at Risk:

	Resource Name	Status	Presence	Sensitivity
Fish	tidewater goby	FE, SSC	Year-round	
Fish	coho salmon - north of Punta Gorda	FT, ST	Year-round	Nov-Apr
Fish	steelhead - Central/Northern California	FT	Year-round	Nov-Apr
Fish	chinook salmon - Winter-run	FE, SE	Year-round	Oct-May
Plants	Point Reyes blennosperma	SR	Year-round	
Plants	Menzies' wallflower	FE, SE	Year-round	

FT-Federally Threatened, FE-Federally Endangered, FP-Federally Protected, SE-State Endangered, ST-State Threatened, SP -State Protected, SR-State Rare, SSC-Species of Special Concern, BGEPA-Bald and Golden Eagle Protection Act, SSSP-State Special Status Species

List of Key Contacts:

Type	Name/Title	Organization	Phone
C	/Coordinator	Native American Heritage Commission	(916) 373-3710
C	/Coordinator	Northwest Information Center	(707) 588-8455
O	/24hr	CalFire Howard Forest Emergency Command	(707) 459-5336
O	/	Ft. Bragg Police Department	(707) 964-0200
O	/	Mendocino County Sheriff's Department	(707) 463-4086
O	/Supervisor Ranger (24hr)	NORCOM State Parks Dispatch	(916) 358-1300
T	/	California Dept of Fish and Wildlife, Fort Bragg	(707) 964-9078
T	/Sector Superintendent	California State Parks, Mendocino District	(707) 937-5804
T	/	NOAA National Marine Fisheries Service-Arcata	(707) 822-7201
T	/	US Fish and Wildlife Service-Arcata Field Office	(707) 822-7201

C – Cultural, Historic, Archaeological; E – Entry/Owner/Access; O – Other; S – Safety; T – Trustee; X – Exclusion or Security

Additional Site Summary Comments:

For further information about coastal access in this area, please refer to the California Coastal Commission’s California Coastal Access Guide. For photos of the coastline in this area, please refer to the California Coastal Records Project (www.californiacoastline.org).

Cultural, Historical, and Archeological sites are known to exist in the area, however, the exact locations of these sites must be ascertained by contacting the Native American Heritage Commission at (916) 373-3710, the State Office of Historical Preservation (916) 445-7000, and/or the Northwest Information Center (707) 588-8455.

Concerns and Advice to Responders:

Contact State Parks for authorization prior to initiating any response here.

Hazard and Restrictions:

Site Strategies:

Site Validation Level: II

Strategy: 1-440.1 Objective: Boom and strand oil for collection near the parking lot and access road
Strategy: Place boom behind the trestle to strand oil on the beach for easy pick up and removal.

Table of Response Resources

Equipment	Sub-Type	Size	Unit	QTY	Unit	Last Page Update
Boom	Harbor	300 ft				
Anchor	Danforth	25 lb		3		
boat	Skiff			1		
Staff	Staff to Deploy			5		

Logistics:

Directions: Take Hwy 101 to Willits. Go west on Hwy 20 to Hwy 1 at Fort Bragg. Go north on Hwy 1 about 2.6 miles to Pudding Creek bridge at the north end of Fort Bragg. Take Pudding Creek access road to parking lot on the west side of Hwy 1 near mouth of Pudding Creek. Heavy equipment access to the beach is possible at this point.

Land Access: Heavy equipment accessible. Contact State Parks.

On-Water Limitations: No boat launching facilities. Closest launch is Noyo Harbor.

Facilities, Staging Areas, Command Posts, Available Equipment: Local equipment staging only.

Communications Problems:



1-442-A Site Summary - Soldier Point**1-442-A****County:** Mendocino **ACP Division/Segment:** MN - E - S01**NOAA Chart:** 18620**Map Book:** CA Road Atlas**Decimal Degrees:** 39.43929 -123.81943**Site Description:**

This rocky point is west of the community of Fort Bragg and just north of the Noyo River mouth near a former lumber mill. Offshore rocks in the area are managed by BLM as part of the California Coastal National Monument. Rocky coastal headland consisting of wave-cut platforms, bedrock outcroppings, and seastacks are about 85% of the shoreline here. About 15% of shoreline lies within pocket coves consisting of coarse grain sand and pebbles. Short section (200 feet) riprap near former mill outfall. Moderate debris consisting of algae and light woody debris found on most beaches. Area is fully exposed to wave energy.

Seabird colonies, haulouts for harbor seals. Marine resources include epibiotic communities: mytilus, barnacles, urchins, red abalone. Algal communities consisting primarily of Nereocystus, Postelsia, various laminaria, and encrusting corraline algae. Phyllospadix (surfgrass), groundfish (EFH). Numerous sensitive plants on bluff include bluff wallflower, Mendocino Coast paintbrush, Pacific gilia, short-leaved-evax (all CNPS 1B.2).

Resources at Risk:*ESI and Habitat:* 1A Exposed Rocky Shore

5 Mixed sand and gravel beaches

2A Exposed wave-cut platforms in bedrock, mud, or clay

List of Resources at Risk:

Resource Name		Status	Presence	Sensitivity
Birds	seabirds		Year-round	
Mammals	marine mammals	FP	Year-round	
Mammals	harbor seal	FP	Year-round	

FT-Federally Threatened, FE-Federally Endangered, FP-Federally Protected, SE-State Endangered, ST-State Threatened, SP -State Protected, SR-State Rare, SSC-Species of Special Concern, BGEPA-Bald and Golden Eagle Protection Act, SSSP-State Special Status Species

List of Key Contacts:

Type	Name/Title	Organization	Phone
C	/Coordinator	Native American Heritage Commission	(916) 373-3710
C	/Coordinator	Northwest Information Center	(707) 588-8455
O	/24hr	CalFire Howard Forest Emergency Command	(707) 459-5336
O	/	Ft. Bragg Police Department	(707) 964-0200
O	/	Mendocino County Sheriff's Department	(707) 463-4086
T	/	NOAA National Marine Fisheries Service-Arcata	(707) 822-7201
T	/	US Fish and Wildlife Service-Arcata Field Office	(707) 822-7201

C – Cultural, Historic, Archaeological; E – Entry/Owner/Access; O – Other; S – Safety; T – Trustee; X – Exclusion or Security

Additional Site Summary Comments:

Breeding seabirds will use these rocks for nesting in the spring. Offshore rocks provide roosting and nesting habitat for birds and haulout locations for marine mammals. Care should be taken so that response activities do not flush wildlife from these areas. The rocks are sensitive to human intrusion year round, especially during nesting season (03-09) when the adults are on eggs and until the young have fledged from the nest. The offshore rocks have cultural significance for local tribes.

For further information about coastal access in this area, please refer to the California Coastal Commission's California Coastal Access Guide. For photos of the coastline in this area, please refer to the California Coastal Records Project (www.californiacoastline.org).

Cultural, Historical, and Archeological sites are known to exist in the area, however, the exact locations of these sites must be ascertained by contacting the Native American Heritage Commission at (916) 373-3710, the State Office of Historical Preservation (916) 445-7000, and/or the Northwest Information Center (707) 588-8455.

Concerns and Advice to Responders:

The rugged coastline will prevent onshore response over most of this area. Off-site measures including dispersants should be considered when a spill threatens to impact this area. Overflights should be careful to maintain flight path and altitude clearance distances that are large enough to prevent the flushing of birds and marine mammals from their nests, roosts, and haulouts on the offshore rocks in this area.

Hazard and Restrictions:

Extreme current, high energy shoreline, offshore rocks

Site Strategies:**Site Validation Level: II**

Strategy: 1-442.1 Objective: No Onsite Options: Consider Offshore Containment/Recovery/ART
Strategy: Conventional on-scene response is not possible at this site. Protect with off-site response measures only.

Table of Response Resources

Last Page Update**Logistics:**

Directions: Take Hwy 101 to Willits. Go west on Hwy 20 to Hwy 1 at Fort Bragg. Go north on Hwy 1 for 1.1 miles, turn west onto W. Cypress Street in Fort Bragg and follow road into former Georgia Pacific Corporation Mill site past Noyo Headlands Park to Soldier Point.

Land Access: Bluff is accessible to vehicles. Popular trail system overlooks site.

On-Water Limitations: Nearest launch is Noyo Harbor

Facilities, Staging Areas, Command Posts, Available Equipment: No facilities on site but Noyo Headlands Park could serve as small staging area.

Communications Problems:



1-444-A Site Summary - Noyo Harbor Entrance and Dolphin Cove**1-444-A****County:** Mendocino**ACP Division/Segment:** MN - E - S02**NOAA Chart:** 18626**Map Book:** CA Road Atlas**Decimal Degrees:** 39.42739 -123.81393**Site Description:**

This site includes the mouth of Noyo River in Fort Bragg and the tidally influenced estuary upstream approximately two miles to Dolphin Cove marina. Site is associated with BLM's California Coastal National Monument resources. Permanently stabilized inlet subject to large waves, strong tidal currents, and strong river outflow. A fine/medium grained sand beach lies just north of the jetty. The entire shoreline between jetties and Hwy 1 bridge is gravel or riprap. Both sides of the river channel for about .75 mile upriver is highly developed with piers on pilings. Two marinas exist in the river. A large marina managed by the Noyo Harbor District for commercial and recreational boats is located about .75 mile upriver in Noyo Basin. A smaller marina named Dolphin Cove is located about 2 miles upriver. This is a busy recreational and commercial harbor year-round.

Marsh and estuary habitat. Coastal seabirds, shorebirds, waterfowl, osprey (01-12). California sea lions, harbor seals and river otters. Anadromous salmonids include chinook (FT) and coho salmon (FE,SE), and steelhead (FT): spawning runs (09-06), juveniles/smolt (02-08). Surfperch and surf smelt spawn on the outer beaches, groundfish (EFH).

Resources at Risk:*ESI and Habitat:* 6B Riprap

8B Sheltered solid man-made structures

10A Salt - and brackish-water marshes

6A Gravel Beach

List of Resources at Risk:

	Resource Name	Status	Presence	Sensitivity
Birds	seabirds		Year-round	
Birds	shorebirds		Year-round	
Birds	waterfowl		Year-round	
Fish	coho salmon - south of Punta Gorda	FE, SE	Year-round	Nov-Apr
Fish	chinook salmon - California coastal	FT	Year-round	Oct-May
Fish	steelhead - Central/Northern California	FT	Year-round	Nov-Apr
Mammals	harbor seal	FP	Year-round	
Mammals	sea lion	FP	Year-round	

FT-Federally Threatened, FE-Federally Endangered, FP-Federally Protected, SE-State Endangered, ST-State Threatened, SP -State Protected, SR-State Rare, SSC-Species of Special Concern, BGEPA-Bald and Golden Eagle Protection Act, SSSP-State Special Status Species

List of Key Contacts:

Type	Name/Title	Organization	Phone
C	/Coordinator	Native American Heritage Commission	(916) 373-3710
C	/Coordinator	Northwest Information Center	(707) 588-8455
E	/	Dolphin Cove Marina	(707) 964-4113
O	/24hr	CalFire Howard Forest Emergency Command	(707) 459-5336
O	/	Ft. Bragg Police Department	(707) 964-0200
O	/	Mendocino County Sheriff's Department	(707) 463-4086
T	/	California Dept of Fish and Wildlife, Fort Bragg	(707) 964-9078
T	/	NOAA National Marine Fisheries Service-Arcata	(707) 822-7201
T	/	Noyo Harbor District	(707) 964-4719
T	/	US Fish and Wildlife Service-Arcata Field Office	(707) 822-7201

C – Cultural, Historic, Archaeological; E – Entry/Owner/Access; O – Other; S – Safety; T – Trustee; X – Exclusion or Security

Additional Site Summary Comments:

For further information about coastal access in this area, please refer to the California Coastal Commission’s California Coastal Access Guide. For photos of the coastline in this area, please refer to the California Coastal Records Project (www.californiacoastline.org).

Cultural, Historical, and Archeological sites are known to exist in the area, however, the exact locations of these sites must be ascertained by contacting the Native American Heritage Commission at (916) 373-3710, the State Office of Historical Preservation (916) 445-7000, and/or the Northwest Information Center (707) 588-8455.

Concerns and Advice to Responders:

Busy harbor, may need to accommodate vessel traffic.

Hazard and Restrictions:

The mouth of the harbor has severe tidal currents that will make any booming efforts difficult if not impossible to do safely.

Site Strategies:

Site Validation Level: II

Strategy: 1-444.1 Objective: Collect oil on an incoming tide to prevent spread into the inner harbor

Strategy: Place boom in the channel to passively move oil to a skimming system.

Table of Response Resources

Equipment	Sub-Type	Size	Unit	QTY	Unit	Last Page Update
Boom	Harbor	1200 feet				
Boom	Sorbent	1200 feet				
Anchor	Danforth	25 lb		12		
boat	Skiff			1		
skimmer	SPS/SFS			1		
Crane	For deploying skimmer or barge			1		
Staff	Staff to Deploy			10		
Staff	Staff to Tend			4		

Logistics:

Directions: For Noyo Harbor entrance: from Hwy 101 at Willits, take Hwy 20 to Hwy 1 at Fort Bragg, turn north on Hwy 1 and continue to north side of the Noyo River bridge. Turn east on N. Harbor Drive and continue downhill to harbor (about 1 mile). For Noyo Basin and Dolphin Cove: from Hwy 20, .25 mile east of Hwy 1, turn north on South Harbor Drive. Go .25 mile to base of grade and turn right on Basin Street. Follow Basin Street upstream past USCG station and Noyo Harbor office to its end at Dolphin Cove (1.5 miles).

Land Access: Site is accessible for large truck traffic.

On-Water Limitations: Boat ramps available at this site. Follow directions to Dolphin Cove.

Facilities, Staging Areas, Command Posts, Available Equipment: This site can serve as a large equipment staging area for large regional area response purposes. Fuel, lodging, food, water, phones, and restroom facilities are all locally available for response needs.

Communications Problems:

Additional Operational Comments: For Noyo River flow gauge information see: <https://waterdata.usgs.gov/monitoring-location/11468500/#parameterCode=00065&period=P7D>



1-448-B Site Summary - South Fort Bragg**1-448-B****County:** Mendocino **ACP Division/Segment:** MN - E - S002 MN - E - S003**NOAA Chart:** 18626 **Map Book:** CA Road Atlas **Decimal Degrees:** 39.40819 -123.82613**Site Description:**

These sites include the mouths of four streams south of the town of Fort Bragg. Jug Handle Creek and beach are part of the Jug Handle State Natural Reserve owned and managed by State Parks. Jug Handle Cove at the mouth of the creek is designated as a State Area of Biological Significance protecting water quality and prohibiting stormwater and waste discharge. Offshore rocks in the area are managed by BLM as part of the California Coastal National Monument. Numerous private properties and parcels surround the other outlets. Four seasonal tidal inlets (Hare, Digger, Mitchell, and Jug Handle creeks) excising coastal bluffs and flowing across medium grained sandy beaches are found within this site. Small lagoons occasionally form within each creek, but because of their ephemeral nature, wetlands (marshes) have not formed. High tides probably overwash into the lagoons. These beaches provide public recreational opportunities and wildlife habitat.

Sensitive resources include migrating salmonids in the small creeks, shorebirds and seabirds including black oystercatcher. Red abalone, anadromous salmonids include chinook (FT) and coho salmon (FE,SE), steelhead (FT): all life stages, estuary use year round, groundfish (EFH). Lotis blue butterfly (FE) habitat.

Resources at Risk:*ESI and Habitat:* 2A Exposed wave-cut platforms in bedrock, mud, or clay

5 Mixed sand and gravel beaches

3A Fine- to medium-grained sand beaches

List of Resources at Risk:

	Resource Name	Status	Presence	Sensitivity
Amphibians	foothill yellow-legged frog	SE, SSC	Year-round	Mar-Aug
Birds	shorebirds		Year-round	
Birds	seabirds		Year-round	
Fish	chinook salmon - Winter-run	FE, SE	Year-round	Oct-May
Fish	coho salmon - south of Punta Gorda	FE, SE	Year-round	Nov-Apr
Fish	steelhead - Central/Northern California	FT	Year-round	Nov-Apr
Insects	Lotis blue butterfly	FE	Year-round	
Plants	Howell's spineflower	FE, ST	Year-round	

FT-Federally Threatened, FE-Federally Endangered, FP-Federally Protected, SE-State Endangered, ST-State Threatened, SP -State Protected, SR-State Rare, SSC-Species of Special Concern, BGEPA-Bald and Golden Eagle Protection Act, SSSP-State Special Status Species

List of Key Contacts:

Type	Name/Title	Organization	Phone
C	/Coordinator	Native American Heritage Commission	(916) 373-3710
C	/Coordinator	Northwest Information Center	(707) 588-8455
O	/24hr	CalFire Howard Forest Emergency Command	(707) 459-5336
O	/	Ft. Bragg Police Department	(707) 964-0200
O	/	Mendocino County Sheriff's Department	(707) 463-4086
O	/Supervisor Ranger (24hr)	NORCOM State Parks Dispatch	(916) 358-1300
T	/	Bureau of Land Management	(707) 825-2300
T	/Sector Superintendent	California State Parks, Mendocino District	(707) 937-5804
T	/	NOAA National Marine Fisheries Service-Arcata	(707) 822-7201
T	/	US Fish and Wildlife Service-Arcata Field Office	(707) 822-7201

C – Cultural, Historic, Archaeological; E – Entry/Owner/Access; O – Other; S – Safety; T – Trustee; X – Exclusion or Security

Additional Site Summary Comments:

For further information about coastal access in this area, please refer to the California Coastal Commission's California Coastal Access Guide. For photos of the coastline in this area, please refer to the California Coastal Records Project (www.californiacoastline.org).

Cultural, Historical, and Archeological sites are known to exist in the area, however, the exact locations of these sites must be ascertained by contacting the Native American Heritage Commission at (916) 373-3710, the State Office of Historical Preservation (916) 445-7000, and/or the Northwest Information Center (707) 588-8455.

Concerns and Advice to Responders:

This is a highly populated area with many environmentally conscious neighbors who use these beaches for recreation. Environmentally friendly response efforts must be delivered quickly to prevent the local community from attempting to initiate their own clean-up efforts. Pre-cleaning and manual oil collection efforts should commence ASAP to minimize injury to the public. Contact State Parks for authorization prior to initiating any response in Jug Handle State Natural Reserve.

Hazard and Restrictions:

The nearshore waters around this area tend to be rocky reef habitat with many submerged rocks. High surf conditions are also common.

Site Strategies:**Site Validation Level: II**

Strategy: 1-448.1 Objective: No Onsite Options: Consider Offshore Containment/Recovery/ART
Strategy: Conventional on-scene response is not possible at this site. Protect with off-site response measures only. Response at these beaches will likely be limited to picking up oil that is stranded along the shoreline or pre-cleaning the swash line to minimize oiling of drift and debris.

Table of Response Resources

Last Page Update**Logistics:**

Directions: Take Hwy 101 to Willits, go west on Hwy 20 to Hwy 1 at Fort Bragg, turn south on Hwy 1. Hare Creek: from Hwy 1, just south of the Hare Creek bridge, turn southwest on Old Coast Road at M.P. 59.60. After .2 mile turn west on Cypress Road. Follow to 18700 Cypress Road. A small, steep foot trail leads to the creek. Equipment access on the north side of the creek. Turn west at signal light leading to College of the Redwoods and follow road to its end. Access will be difficult because of private property along river bank. Contact property owners. Some damage might occur to lawns and fences. Otherwise the slope to the river appears low enough to permit equipment access. Digger Creek may be accessed by foot or by car through the Mendocino Coast Botanical Gardens at 18050 Ocean Drive, just south of Hare Creek. The garden's phone number is (707) 964-4352 ext. 16. Additional light equipment access from the north side of Digger Creek can be made by first contacting Holly's Ocean Meadow, a private rental off Johnson Ln (707.972.6443). Mitchell Creek: from Hwy 1 south of Fort Bragg, turn west on Ocean Drive at M.P. 57.50, follow Ocean Drive .3 mile to Pine Beach Inn parking lot. Jug Handle Creek and beach: access by foot only from northwest side of Jug Handle SNR parking lot on west side of Hwy 1, south of Fort Bragg, at M.P. 56.00. May need to cross creek to access beach, depending on channel movement.

Land Access: Foot access. Multiple private properties-contact owner for permission to access.

On-Water Limitations: None. Closest launch is Noyo Harbor.

Facilities, Staging Areas, Command Posts, Available Equipment: No staging at these sites.

Communications Problems:



1-452-B Site Summary - Caspar Point**1-452-B****County:** Mendocino **ACP Division/Segment:** MN - E - S03**NOAA Chart:** 18626**Map Book:** CA Road Atlas**Decimal Degrees:** 39.36959 -123.82553**Site Description:**

This rocky headland is northwest of the community of Caspar and mostly in private ownership. Caspar Headlands State Reserve, owned and managed by State Parks, encompasses the southeastern area below Caspar Point. Offshore rocks in the area are managed by BLM as part of the California Coastal National Monument. Steep rocky headlands and offshore rocks.

Seabird colonies include pelagic cormorants, pigeon guillemot, western gull. Marine mammals, red abalone, groundfish (EFH). Sensitive plants on headlands including Howell's spineflower, Mendocino Coast paintbrush, perennial goldfields (all CNPS 1B.2), Lotis blue butterfly (FE) habitat.

Resources at Risk:*ESI and Habitat:* 2A Exposed wave-cut platforms in bedrock, mud, or clay

5 Mixed sand and gravel beaches

List of Resources at Risk:

	Resource Name	Status	Presence	Sensitivity
Amphibians	foothill yellow-legged frog	SE, SSC	Year-round	Mar-Aug
Birds	seabirds		Year-round	
Insects	Lotis blue butterfly	FE	Year-round	
Mammals	marine mammals	FP	Year-round	
Plants	Howell's spineflower	FE, ST	Year-round	

FT-Federally Threatened, FE-Federally Endangered, FP-Federally Protected, SE-State Endangered, ST-State Threatened, SP -State Protected, SR-State Rare, SSC-Species of Special Concern, BGEPA-Bald and Golden Eagle Protection Act, SSSP-State Special Status Species

List of Key Contacts:

Type	Name/Title	Organization	Phone
C	/Coordinator	Native American Heritage Commission	(916) 373-3710
C	/Coordinator	Northwest Information Center	(707) 588-8455
O	/24hr	CalFire Howard Forest Emergency Command	(707) 459-5336
O	/	Mendocino County Sheriff's Department	(707) 463-4086
O	/Supervisor Ranger (24hr)	NORCOM State Parks Dispatch	(916) 358-1300
T	/	Bureau of Land Management	(707) 825-2300
T	/Sector Superintendent	California State Parks, Mendocino District	(707) 937-5804
T	/	NOAA National Marine Fisheries Service-Arcata	(707) 822-7201
T	/	US Fish and Wildlife Service-Arcata Field Office	(707) 822-7201

C – Cultural, Historic, Archaeological; E – Entry/Owner/Access; O – Other; S – Safety; T – Trustee; X – Exclusion or Security

Additional Site Summary Comments:

Breeding seabirds will use these rocks for nesting in the spring. Offshore rocks provide roosting and nesting habitat for birds and haulout locations for marine mammals. Care should be taken so that response activities do not flush wildlife from these areas. The rocks are sensitive to human intrusion year round, especially during nesting season (03-09) when the adults are on eggs and until the young have fledged from the nest. The offshore rocks have cultural significance for local tribes.

For further information about coastal access in this area, please refer to the California Coastal Commission's California Coastal Access Guide. For photos of the coastline in this area, please refer to the California Coastal Records Project (www.californiacoastline.org).

Cultural, Historical, and Archeological sites are known to exist in the area, however, the exact locations of these sites must be ascertained by contacting the Native American Heritage Commission at (916) 373-3710, the State Office of Historical Preservation (916) 445-7000, and/or the Northwest Information Center (707) 588-8455.

Concerns and Advice to Responders:

The rugged coastline will prevent onshore response over most of this area. Off-site measures including dispersants should be considered when a spill threatens to impact this area. Overflights should be careful to maintain flight path and altitude clearance distances that are large enough to prevent the flushing of birds and marine mammals from their nests, roosts, and haulouts on the offshore rocks in this area.

Hazard and Restrictions:

Extreme current, high energy shoreline, offshore rocks

Site Strategies:

Site Validation Level: II

Strategy: 1-452.1 Objective: No Onsite Options: Consider Offshore Containment/Recovery/ART

Strategy: Conventional on-scene response is not possible at this site. Protect with off-site response measures only.

Table of Response Resources

Last Page Update

Logistics:

Directions: Take Hwy 101 to Willits, go west on Hwy 20 to Hwy 1 at Fort Bragg, turn south on Hwy 1. Continue until town of Caspar is reached. Exit right on Caspar Rd, follow road into Caspar. The town is located southeast of Caspar Point, accessible from Pacifica Ave and Seadrift Ln. Contact State Parks for additional access/information (707.937.5804).

Land Access: Private Properties. Foot access to headlands. Shoreline access limited by cliffs.

On-Water Limitations: Small craft hand launch possible at Caspar Beach, south of Caspar. Use Point Cabrillo Drive to access beach. Nearest large launch is Noyo Harbor.

Facilities, Staging Areas, Command Posts, Available Equipment: None

Communications Problems:



1-454-A Site Summary - Caspar Creek and Doyle Creek**1-454-A****County:** Mendocino **ACP Division/Segment:** MN - E - S03 MN - E - S04**NOAA Chart:** 18626 **Map Book:** CA Road Atlas **Decimal Degrees:** 39.36119 -123.81783**Site Description:**

This site is at the mouth of two creeks that enter the ocean within a cove just south of the community of Caspar. There is a small beach between the two creeks. The south end of the beach is owned and managed by State Parks as Caspar Headlands State Beach. The area north of Caspar Creek and the headlands to the northwest are owned and managed by State Parks as Caspar Headlands State Reserve. Mendocino Land Trust owns the remainder of the beach between the creeks. Offshore rocks in the area are managed by BLM as part of the California Coastal National Monument. Creeks flow alongside bedrock bluffs; Caspar Creek lies along north bluff and Doyle Creek along south bluff and across medium grained sandy beaches. Caspar Creek has a small lagoon with a fringing marsh on its east side. Some wetland areas also exist along Doyle Creek. Riprap fronts the access road at the back of the beach and could be oiled under storm conditions.

The marsh provides habitat for many species of waterfowl and shorebirds that forage there year round. Salmonid migrations through the estuary would occur mostly during high water flow events during winter and spring. Freshwater and saltwater marshes in both creeks. Foraging seabirds and shorebirds nearby, waterfowl resting, feeding, nesting habitat in the small Caspar Creek lagoon, osprey foraging and nesting habitat nearby. Red abalone, anadromous salmonids include chinook (FT) and coho salmon (FE/SE), steelhead trout (FT): all life stages, estuary use year round, juveniles may be present nearshore moving between the two creeks. Sensitive plants here include pink sand-verbena (CNPS 1B.1) and Mendocino Coast paintbrush (CNPS 1B.2).

Resources at Risk:*ESI and Habitat:* 3A Fine- to medium-grained sand beaches

10A Salt - and brackish-water marshes

6A Gravel Beach

List of Resources at Risk:

	Resource Name	Status	Presence	Sensitivity
Amphibians	Southern torrent salamander	SSC	Year-round	
Birds	waterfowl		Year-round	
Birds	shorebirds		Year-round	
Fish	coho salmon - south of Punta Gorda	FE, SE	Year-round	Nov-Apr
Fish	steelhead - Central/Northern California	FT	Year-round	Nov-Apr
Fish	chinook salmon - California coastal	FT	Year-round	Oct-May

FT-Federally Threatened, FE-Federally Endangered, FP-Federally Protected, SE-State Endangered, ST-State Threatened, SP -State Protected, SR-State Rare, SSC-Species of Special Concern, BGEPA-Bald and Golden Eagle Protection Act, SSSP-State Special Status Species

List of Key Contacts:

Type	Name/Title	Organization	Phone
C	/Coordinator	Native American Heritage Commission	(916) 373-3710
C	/Coordinator	Northwest Information Center	(707) 588-8455
E	/	Mendocino Land Trust	(707) 962-0470
O	/24hr	CalFire Howard Forest Emergency Command	(707) 459-5336
O	/	Mendocino County Sheriff's Department	(707) 463-4086
O	/Supervisor Ranger (24hr)	NORCOM State Parks Dispatch	(916) 358-1300
T	/	California Dept of Fish and Wildlife, Fort Bragg	(707) 964-9078
T	/Sector Superintendent	California State Parks, Mendocino District	(707) 937-5804
T	/	NOAA National Marine Fisheries Service-Arcata	(707) 822-7201
T	/	US Fish and Wildlife Service-Arcata Field Office	(707) 822-7201

C – Cultural, Historic, Archaeological; E – Entry/Owner/Access; O – Other; S – Safety; T – Trustee; X – Exclusion or Security

Additional Site Summary Comments:

For further information about coastal access in this area, please refer to the California Coastal Commission's California Coastal Access Guide. For photos of the coastline in this area, please refer to the California Coastal Records Project (www.californiacoastline.org).

Cultural, Historical, and Archeological sites are known to exist in the area, however, the exact locations of these sites must be ascertained by contacting the Native American Heritage Commission at (916) 373-3710, the State Office of Historical Preservation (916) 445-7000, and/or the Northwest Information Center (707) 588-8455.

Concerns and Advice to Responders:

Contact State Parks for authorization prior to initiating any response on State Parks lands.

Hazard and Restrictions:

Site Strategies:

Site Validation Level: II

Strategy: 1-454.1 Objective: Exclusion boom Caspar Creek to prevent oil from moving upstream on an incoming tide.

Strategy: Exclusion boom the mouth of Caspar Creek

Table of Response Resources

Equipment	Sub-Type	Size	Unit	QTY	Unit	Last Page Update
Boom	Harbor	300 feet				
Anchor	Danforth	25 lb		6		
Staff	Staff to Deploy			8		

Strategy: 1-454.2 Objective: Exclusion boom Doyle Creek to prevent oil from moving upstream on an incoming tide.

Strategy: Exclusion boom the mouth of Doyle Creek

Table of Response Resources

Equipment	Sub-Type	Size	Unit	QTY	Unit	Last Page Update
Boom	Harbor	200 feet				
Anchor	Danforth	25 lb		4		
Staff	Staff to Deploy			8		

Strategy: 1-454.3 Objective: Install a filter fence in Doyle Creek to prevent oil from moving upstream on an incoming tide.

Strategy: Install a filter fence using pom poms, stakes, & line

Table of Response Resources

Equipment	Sub-Type	Size	Unit	QTY	Unit	Last Page Update
Other Boom	Pom-pom	200 feet				
Line & Stakes						
Staff	Staff to Deploy			8		
Staff	Staff to Tend			2		

Strategy: 1-454.4 Objective: Dam Doyle Creek to prevent oil from moving upstream on an incoming tide.

Strategy: Construct an underflow dam using either heavy equipment or sandbags & hand crew

Table of Response Resources

Equipment	Sub-Type	Size	Unit	QTY	Unit	Last Page Update
Heavy Equipment	Front Loader			1		
Sandbags						
staff	Staff to Deploy			8		
Staff	Staff to Tend			2		

Logistics:

Directions: Take Hwy 101 to Willits, go west on Hwy 20 to Hwy 1 at Fort Bragg, turn south on Hwy 1 for 5 miles, take Point Cabrillo Drive (M.P. 54.66) west on the south side of Caspar Creek bridge, follow for .5 mile to pull out on Caspar Creek beach. Access for beach is near Caspar Beach RV Park. Easiest access to beach is near Doyle Creek.

Land Access: Drive on vehicle access. Contact State Parks and Mendocino Land Trust.

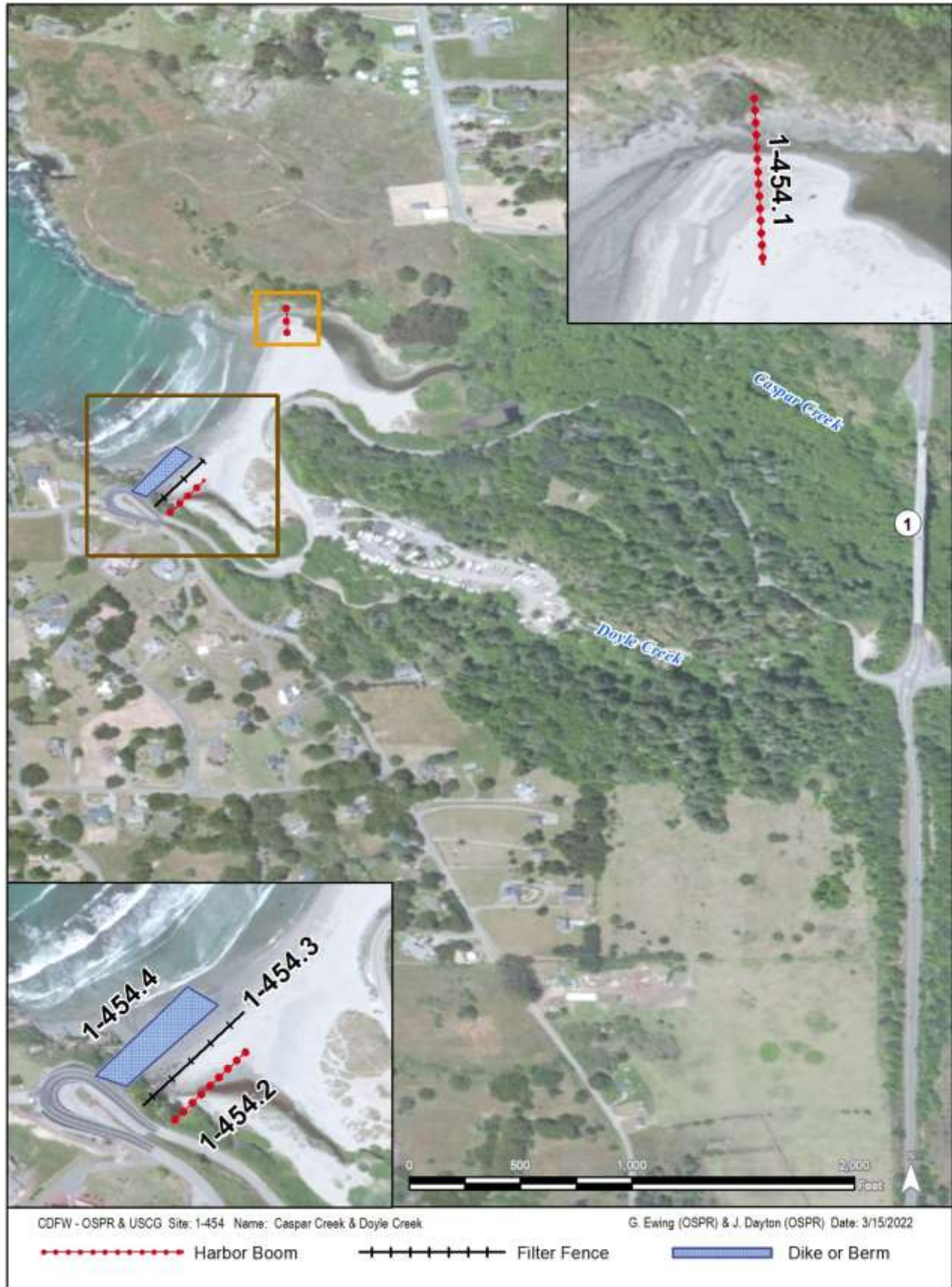
1-454-A Site Strategy - Caspar Creek and Doyle Creek

1-454-A

On-Water Limitations: Small craft hand launch is possible at Caspar Beach. Nearest large launch is Noyo Harbor

Facilities, Staging Areas, Command Posts, Available Equipment: Staging at this site is adequate for immediate site needs only. The site is close to Fort Bragg and does not have on site facilities.

Communications Problems:



1-456-A Site Summary - Pt Cabrillo to Russian Gulch**1-456-A****County:** Mendocino **ACP Division/Segment:** MN - F - S01**NOAA Chart:** 18626**Map Book:** CA Road Atlas**Decimal Degrees:** 39.34159 -123.82613**Site Description:**

This site includes the coastline between Pt Cabrillo and Russian Gulch State Park. The lighthouse property at Pt Cabrillo is owned by State Parks. Offshore rocks in the area are managed by BLM as part of the California Coastal National Monument. Site is within with the following State Marine Protected Areas: Pt. Cabrillo SMR, Russian Gulch SMCA. CDFW Marine Reserves. Fully exposed bedrock outcroppings and wave-cut platforms. Surge channels and pocket coves with sheer bedrock walls. Some channels and pocket coves have gravel beaches at their inland end. Algal debris abundant in some protected channels and coves. No facilities. Access to beach limited by steep rock walls. Jack Peters Creek excises a deep gulch and flows across a medium-grained sand beach. No lagoon or wetlands present. Nearshore and offshore rocks throughout coastline.

Tidepool habitats along this shore are highly vulnerable to oiling. Seabirds include black oystercatchers, pelagic cormorants, pigeon guillemots, western gull (nesting 04-08). Osprey foraging and nesting habitat (01-12). Lotis blue butterfly (FE)(01-12) in sphagnum bogs within stands of pine near the point. Harbor seal haulouts and pupping areas. Chinook (FT) and coho salmon (FE,SE), steelhead (FT): spawning run (10-06), juveniles/smolt (02-08); groundfish (EFH). Red abalone, mussels, urchins, goose-neck barnacles, Postelsia, Nereocystis, Egregia.

Resources at Risk:*ESI and Habitat:* 2A Exposed wave-cut platforms in bedrock, mud, or clay

3A Fine- to medium-grained sand beaches

5 Mixed sand and gravel beaches

List of Resources at Risk:

	Resource Name	Status	Presence	Sensitivity
Amphibians	Northern red-legged frog	SSC	Year-round	
Birds	seabirds		Year-round	
Fish	coho salmon - south of Punta Gorda	FE, SE	Year-round	Nov-Apr
Fish	steelhead - Central/Northern California	FT	Year-round	Nov-Apr
Insects	Lotis blue butterfly	FE	Year-round	
Mammals	marine mammals	FP	Year-round	
Mammals	harbor seal	FP	Year-round	

FT-Federally Threatened, FE-Federally Endangered, FP-Federally Protected, SE-State Endangered, ST-State Threatened, SP -State Protected, SR-State Rare, SSC-Species of Special Concern, BGEPA-Bald and Golden Eagle Protection Act, SSSP-State Special Status Species

List of Key Contacts:

Type	Name/Title	Organization	Phone
C	/Coordinator	Native American Heritage Commission	(916) 373-3710
C	/Coordinator	Northwest Information Center	(707) 588-8455
E	/President	Point Cabrillo Lightkeepers Association	(707) 937-6123
O	/24hr	CalFire Howard Forest Emergency Command	(707) 459-5336
O	/	Mendocino County Sheriff's Department	(707) 463-4086
O	/Supervisor Ranger (24hr)	NORCOM State Parks Dispatch	(916) 358-1300
T	/	Bureau of Land Management	(707) 825-2300
T	/Sector Superintendent	California State Parks, Mendocino District	(707) 937-5804
T	/	NOAA National Marine Fisheries Service-Arcata	(707) 822-7201
T	/	US Fish and Wildlife Service-Arcata Field Office	(707) 822-7201

C – Cultural, Historic, Archaeological; E – Entry/Owner/Access; O – Other; S – Safety; T – Trustee; X – Exclusion or Security

Additional Site Summary Comments:

Breeding seabirds will use these rocks for nesting in the spring. Offshore rocks provide roosting and nesting habitat for birds and haulout locations for marine mammals. Care should be taken so that response activities do not flush wildlife from these areas. The rocks are sensitive to human intrusion year round, especially during nesting season (03-09) when the adults are on eggs and until the young have fledged from the nest. The offshore rocks have cultural significance for local tribes.

For further information about coastal access in this area, please refer to the California Coastal Commission’s California Coastal Access Guide. For photos of the coastline in this area, please refer to the California Coastal Records Project (www.californiacoastline.org).

Cultural, Historical, and Archeological sites are known to exist in the area, however, the exact locations of these sites must be ascertained by contacting the Native American Heritage Commission at (916) 373-3710, the State Office of Historical Preservation (916) 445-7000, and/or the Northwest Information Center (707) 588-8455.

Concerns and Advice to Responders:

The rugged coastline will prevent onshore response over most of this area. Off-site measures including dispersants should be considered when a spill threatens to impact this area. Overflights should be careful to maintain flight path and altitude clearance distances that are large enough to prevent the flushing of birds and marine mammals from their nests, roosts, and haulouts on the offshore rocks in this area.

Hazard and Restrictions:

Steep pocket beaches, rock walls, no shoreline access over most of area

Site Strategies:

Site Validation Level: II

Strategy: 1-456.1 Objective: Minimize oiling of Russian Gulch's tidal area

Strategy: Construct a double layered filter fence to exclude oil from the upper tidal area. Total length of fence would be about 450 feet.

Table of Response Resources

Equipment	Sub-Type	Size	Unit	QTY	Unit	Last Page Update
Other Boom	Pom-pom	450 feet				
Stakes & Line						
Staff	Staff to Deploy			5		

Logistics:

Directions: From Hwy 101 at Willits, take Hwy 20 west toward Fort Bragg, go south on Hwy 1 to M.P. 54.66, turn west on Point Cabrillo Drive, continue 1.2 miles to Lighthouse Road. Turn west on Lighthouse Road to unlocked gate. There is no beach access at lighthouse (cliffs and steep rock walls). For Russian Gulch: Exit west from Hwy 1 at south exit to Pt Cabrillo Drive (M.P. 52.97). Immediately turn left into Russian Gulch State Park entrance. Continue on main road down hill, behind Hwy 1 bridge. Turn right at bottom of hill to Beach parking lot. Recreation Hall is located at road junction.

Land Access: Access restricted to medium sized utility trucks.

On-Water Limitations: Small punt hand launch possible at Russian Gulch Beach. Closest large launch is Noyo Harbor

Facilities, Staging Areas, Command Posts, Available Equipment: The recreation hall in the Russian Gulch State Park could be used as an Incident Command Post if outside comms were brought in.

Communications Problems:



1-458-B Site Summary - Mendocino Headlands State Park**1-458-B****County:** Mendocino **ACP Division/Segment:** MN - F - S02**NOAA Chart:** 18626**Map Book:** CA Road Atlas**Decimal Degrees:** 39.3051 -123.80913**Site Description:**

This site is composed of the rocky shoreline adjacent to the community of Mendocino and is managed by State Parks. Offshore rocks in the area are managed by BLM as part of the California Coastal National Monument. Rocky bluffs, surge channels, seawalls and offshore rocks. Fully exposed wave energy. This site is popular and can be busy seasonally with many tourists and locals hiking the trails on the scenic bluffs.

Seabird colonies include pelagic cormorant, pigeon guillemot, tufted puffin (SSC), western gull, black oystercatcher; marine mammals, red abalone, groundfish (EFH). Sensitive plants on bluff include bluff wallflower, perennial goldfields, Mendocino Coast paintbrush (all CNPS 1B.2).

Resources at Risk:*ESI and Habitat:* 2A Exposed wave-cut platforms in bedrock, mud, or clay

5 Mixed sand and gravel beaches

List of Resources at Risk:

	Resource Name	Status	Presence	Sensitivity
Birds	tufted puffin	FP, SSC		Mar-Aug
Birds	seabirds		Year-round	
Mammals	marine mammals	FP	Year-round	

FT-Federally Threatened, FE-Federally Endangered, FP-Federally Protected, SE-State Endangered, ST-State Threatened, SP -State Protected, SR-State Rare, SSC-Species of Special Concern, BGEPA-Bald and Golden Eagle Protection Act, SSSP-State Special Status Species

List of Key Contacts:

Type	Name/Title	Organization	Phone
C	/Coordinator	Native American Heritage Commission	(916) 373-3710
C	/Coordinator	Northwest Information Center	(707) 588-8455
O	/24hr	CalFire Howard Forest Emergency Command	(707) 459-5336
O	/	Mendocino County Sheriff's Department	(707) 463-4086
O	/Supervisor Ranger (24hr)	NORCOM State Parks Dispatch	(916) 358-1300
T	/	Bureau of Land Management	(707) 825-2300
T	/Sector Superintendent	California State Parks, Mendocino District	(707) 937-5804
T	/	NOAA National Marine Fisheries Service-Arcata	(707) 822-7201
T	/	US Fish and Wildlife Service-Arcata Field Office	(707) 822-7201

C – Cultural, Historic, Archaeological; E – Entry/Owner/Access; O – Other; S – Safety; T – Trustee; X – Exclusion or Security

Additional Site Summary Comments:

Breeding seabirds will use these rocks for nesting in the spring. Offshore rocks provide roosting and nesting habitat for birds and haulout locations for marine mammals. Care should be taken so that response activities do not flush wildlife from these areas. The rocks are sensitive to human intrusion year round, especially during nesting season (03-09) when the adults are on eggs and until the young have fledged from the nest. The offshore rocks have cultural significance for local tribes.

For further information about coastal access in this area, please refer to the California Coastal Commission's California Coastal Access Guide. For photos of the coastline in this area, please refer to the California Coastal Records Project (www.californiacoastline.org).

Cultural, Historical, and Archeological sites are known to exist in the area, however, the exact locations of these sites must be ascertained by contacting the Native American Heritage Commission at (916) 373-3710, the State Office of Historical Preservation (916) 445-7000, and/or the Northwest Information Center (707) 588-8455.

Concerns and Advice to Responders:

The rugged coastline will prevent onshore response over most of this area. Off-site measures including dispersants should be considered when a spill threatens to impact this area. Overflights should be careful to maintain flight path and altitude clearance distances that are large enough to prevent the flushing of birds and marine mammals from their nests, roosts, and haulouts on the offshore rocks in this area.

Hazard and Restrictions:

Extreme current, high energy shoreline, offshore rocks

Site Strategies:

Site Validation Level: II

Strategy: 1-458.1 Objective: No Onsite Options: Consider Offshore Containment/Recovery/ART

Strategy: Conventional on-scene response is not possible at this site. Protect with off-site response measures only.

Table of Response Resources

Last Page Update

Logistics:

Directions: From Hwy 101 at Willits, take Hwy 20 west to Hwy 1 at Fort Bragg, go south on Hwy 1 to the Mendocino exit onto Lansing Street, turn west on Heeser Drive to the end at the headlands.

Land Access: Shoreline access is limited to foot traffic.

On-Water Limitations: No launching facilities are available at this site.

Facilities, Staging Areas, Command Posts, Available Equipment: Staging for local response equipment is available in the parking lots above the beaches in the general area. These parking lots are unpaved and have no utilities. Food service and phones are the only resources generally available for response in the immediate area.

Communications Problems:



1-460-A Site Summary - Big River**1-460-A****County:** Mendocino **ACP Division/Segment:** MN - F - S02 MN - F - S03**NOAA Chart:** 18626**Map Book:** CA Road Atlas**Decimal Degrees:** 39.3021 -123.79473**Site Description:**

This site includes the tidal estuary where Big River enters Mendocino Bay and Big River Beach. The north shoreline and beach west of the State Hwy 1 bridge lie within Mendocino Headlands State Park. Most of the estuary and shoreline east of the bridge, as well as the surrounding forestland, are part of the Big River Unit of the park. Caltrans owns a right-of-way near the bridge and Campbell Hawthorn owns a small parcel near the beach parking lot. Site is within the following State Marine Protected Area: Big River Estuary SMCA. Site is associated with BLM's California Coastal National Monument resources. Wide, sandy tidal inlet with well developed marsh complex upstream along channel margins. Strong tidal currents.

The estuary provides habitat for many species of waterfowl, waterbirds, and shorebirds that forage there year-round. Salmonid migrations through the estuary would occur mostly during high water flow events during winter and spring. Osprey (01-12), marsh birds and wading birds (herons and egrets), double-crested cormorants nest in river corridor, purple martin (SSC). Marine mammals including harbor seals, river otters. Anadromous salmonids include chinook (FT) and coho salmon (FE,SE), and steelhead (FT): spawning runs (09-06), juveniles/smolts (02-08). Tidewater goby (FE), groundfish (EFH), herring spawn on eelgrass, eelgrass present in estuary. River estuary serves as Dungeness crab nursery. Sensitive plants on beach and nearby include pink sand-verbena (CNPS 1B.1), bluff walflower, dark-eyed gilia, Humboldt Bay owl's-clover, and Mendocino Coast paintbrush (all CNPS 1B.2).

Resources at Risk:*ESI and Habitat:* 10A Salt - and brackish-water marshes

8A Sheltered scarps in bedrock, mud, or clay

7 Exposed tidal flat

3A Fine- to medium-grained sand beaches

List of Resources at Risk:

	Resource Name	Status	Presence	Sensitivity
Birds	osprey	FP	Year-round	
Birds	double-crested cormorant	FP	Year-round	
Fish	coho salmon - south of Punta Gorda	FE, SE	Year-round	Nov-Apr
Fish	steelhead - Central/Northern California	FT	Year-round	Nov-Apr
Fish	chinook salmon - Winter-run	FE, SE	Year-round	Oct-May
Fish	tidewater goby	FE, SSC	Year-round	
Mammals	harbor seal	FP	Year-round	Mar-Jun

FT-Federally Threatened, FE-Federally Endangered, FP-Federally Protected, SE-State Endangered, ST-State Threatened, SP -State Protected, SR-State Rare, SSC-Species of Special Concern, BGEPA-Bald and Golden Eagle Protection Act, SSSP-State Special Status Species

List of Key Contacts:

Type	Name/Title	Organization	Phone
C	/Coordinator	Native American Heritage Commission	(916) 373-3710
C	/Coordinator	Northwest Information Center	(707) 588-8455
O	/24hr	CalFire Howard Forest Emergency Command	(707) 459-5336
O	/	Mendocino County Sheriff's Department	(707) 463-4086
O	/Supervisor Ranger (24hr)	NORCOM State Parks Dispatch	(916) 358-1300
T	/	California Dept of Fish and Wildlife, Fort Bragg	(707) 964-9078
T	/Sector Superintendent	California State Parks, Mendocino District	(707) 937-5804
T	/	NOAA National Marine Fisheries Service-Arcata	(707) 822-7201
T	/	US Fish and Wildlife Service-Arcata Field Office	(707) 822-7201

C – Cultural, Historic, Archaeological; E – Entry/Owner/Access; O – Other; S – Safety; T – Trustee; X – Exclusion or Security

Additional Site Summary Comments:

Breeding seabirds will use these rocks for nesting in the spring. Offshore rocks provide roosting and nesting habitat for birds and haulout locations for marine mammals. Care should be taken so that response activities do not flush wildlife from these areas. The rocks are sensitive to human intrusion year round, especially during nesting season (03-09) when the adults are on eggs and until the young have fledged from the nest. The offshore rocks have cultural significance for local tribes.

For further information about coastal access in this area, please refer to the California Coastal Commission’s California Coastal Access Guide. For photos of the coastline in this area, please refer to the California Coastal Records Project (www.californiacoastline.org).

Cultural, Historical, and Archeological sites are known to exist in the area, however, the exact locations of these sites must be ascertained by contacting the Native American Heritage Commission at (916) 373-3710, the State Office of Historical Preservation (916) 445-7000, and/or the Northwest Information Center (707) 588-8455.

Concerns and Advice to Responders:

Contact State Parks if response is necessary here due to possible presence of endangered tidewater goby and other sensitive resources in area.

Hazard and Restrictions:

Strong tidal currents in river.

Site Strategies:

Site Validation Level: II

Strategy: 1-460.1 Objective: Divert incoming oil to the north shore for collection when oil present
Strategy: Exclusion/diversion booming to land oil on the sand near the parking lot.

Table of Response Resources

Equipment	Sub-Type	Size	Unit	QTY	Unit	Last Page Update
Boom	Harbor	1000	feet			
Boom	Sorbent	2000	feet			
Anchor	Danforth	25	lb	10		
boat	Skiff			2		
Staff	Staff to Deploy			10		

Logistics:

Directions: From Hwy 101 at Willits, take state Hwy 20 west to Hwy 1 at Fort Bragg and go south through Mendocino. Turn left before crossing the bridge over Big River onto North Big River Road, follow road downhill .2 mile to parking lot. At low tide, vehicles could access mouth of river by proceeding along beach appx. .5 mile. At higher tides, no access to mouth is possible by vehicle.

Land Access: Large vehicle can access this site. Contact State Parks first.

On-Water Limitations: Small boat launch ramp on site.

Facilities, Staging Areas, Command Posts, Available Equipment: The parking lot could be used to stage enough equipment to supply the needs of other response sites in the area. The small boat launch ramp is suitable for small motorized craft only, and probably not good to launch ocean response vessels. The site does not have lodging, fuel, water, or electricity (all available nearby in Mendocino).

Communications Problems:



1-462-B Site Summary - Mendocino Bay**1-462-B****County:** Mendocino **ACP Division/Segment:** MN - F - S02 MN - F - S03**NOAA Chart:** 18626**Map Book:** CA Road Atlas**Decimal Degrees:** 39.296 -123.80193**Site Description:**

This site is comprised of the small bay south of the headlands and community of Mendocino. The north shoreline of the bay is included in Mendocino Headlands State Park. The estuary and beach parking area are also a part of the State Park (east side of Hwy 1 bridge). Offshore rocks in the area are managed by BLM as part of the California Coastal National Monument. Large crescent shaped bay opening to the west. Big River enters the ocean at this point. Offshore rocks, wave-cut platforms, fine- to medium-grained sand beaches.

Seabird rookeries (03-09) include Brandt's and pelagic cormorants, black oystercatcher, western gull, pigeon guillemot, tufted puffin (SSC), roosts (01-12). Marine mammals use area for haulouts. Red abalone, groundfish (EFH), kelp. Sensitive plant communities on the bluffs and shoreline nearby include bluff wallflower, coastal bluff morning glory, Mendocino Coast paintbrush, perennial goldfields (all CNPS 1B.2).

Resources at Risk:*ESI and Habitat:* 2A Exposed wave-cut platforms in bedrock, mud, or clay

3A Fine- to medium-grained sand beaches

List of Resources at Risk:

	Resource Name	Status	Presence	Sensitivity
Birds	seabirds		Year-round	
Birds	tufted puffin	FP, SSC		Mar-Aug
Mammals	marine mammals	FP	Year-round	

FT-Federally Threatened, FE-Federally Endangered, FP-Federally Protected, SE-State Endangered, ST-State Threatened, SP -State Protected, SR-State Rare, SSC-Species of Special Concern, BGEPA-Bald and Golden Eagle Protection Act, SSSP-State Special Status Species

List of Key Contacts:

Type	Name/Title	Organization	Phone
C	/Coordinator	Native American Heritage Commission	(916) 373-3710
C	/Coordinator	Northwest Information Center	(707) 588-8455
O	/24hr	CalFire Howard Forest Emergency Command	(707) 459-5336
O	/	Mendocino County Sheriff's Department	(707) 463-4086
O	/Supervisor Ranger (24hr)	NORCOM State Parks Dispatch	(916) 358-1300
T	/	Bureau of Land Management	(707) 825-2300
T	/Sector Superintendent	California State Parks, Mendocino District	(707) 937-5804
T	/	NOAA National Marine Fisheries Service-Arcata	(707) 822-7201
T	/	US Fish and Wildlife Service-Arcata Field Office	(707) 822-7201

C – Cultural, Historic, Archaeological; E – Entry/Owner/Access; O – Other; S – Safety; T – Trustee; X – Exclusion or Security

Additional Site Summary Comments:

Breeding seabirds will use these rocks for nesting in the spring. Offshore rocks provide roosting and nesting habitat for birds and haulout locations for marine mammals. Care should be taken so that response activities do not flush wildlife from these areas. The rocks are sensitive to human intrusion year round, especially during nesting season (03-09) when the adults are on eggs and until the young have fledged from the nest. The offshore rocks have cultural significance for local tribes.

For further information about coastal access in this area, please refer to the California Coastal Commission's California Coastal Access Guide. For photos of the coastline in this area, please refer to the California Coastal Records Project (www.californiacoastline.org).

Cultural, Historical, and Archeological sites are known to exist in the area, however, the exact locations of these sites must be ascertained by contacting the Native American Heritage Commission at (916) 373-3710, the State Office of Historical Preservation (916) 445-7000, and/or the Northwest Information Center (707) 588-8455.

Concerns and Advice to Responders:

The rugged coastline will prevent onshore response over most of this area. Off-site measures including dispersants should be considered when a spill threatens to impact this area. Overflights should be careful to maintain flight path and altitude clearance distances that are large enough to prevent the flushing of birds and marine mammals from their nests, roosts, and haulouts on the offshore rocks in this area.

Hazard and Restrictions:

Extreme current, high energy shoreline, offshore rocks

Site Strategies:**Site Validation Level: II**

Strategy: 1-462.1 Objective: No Onsite Options: Consider Offshore Containment/Recovery/ART

Strategy: Off-site dispersion may be the only option. Response in this area would be difficult under typical sea conditions. Apply dispersants to off-site oil before it arrives at this sensitive site.

Table of Response Resources

Last Page Update**Logistics:**

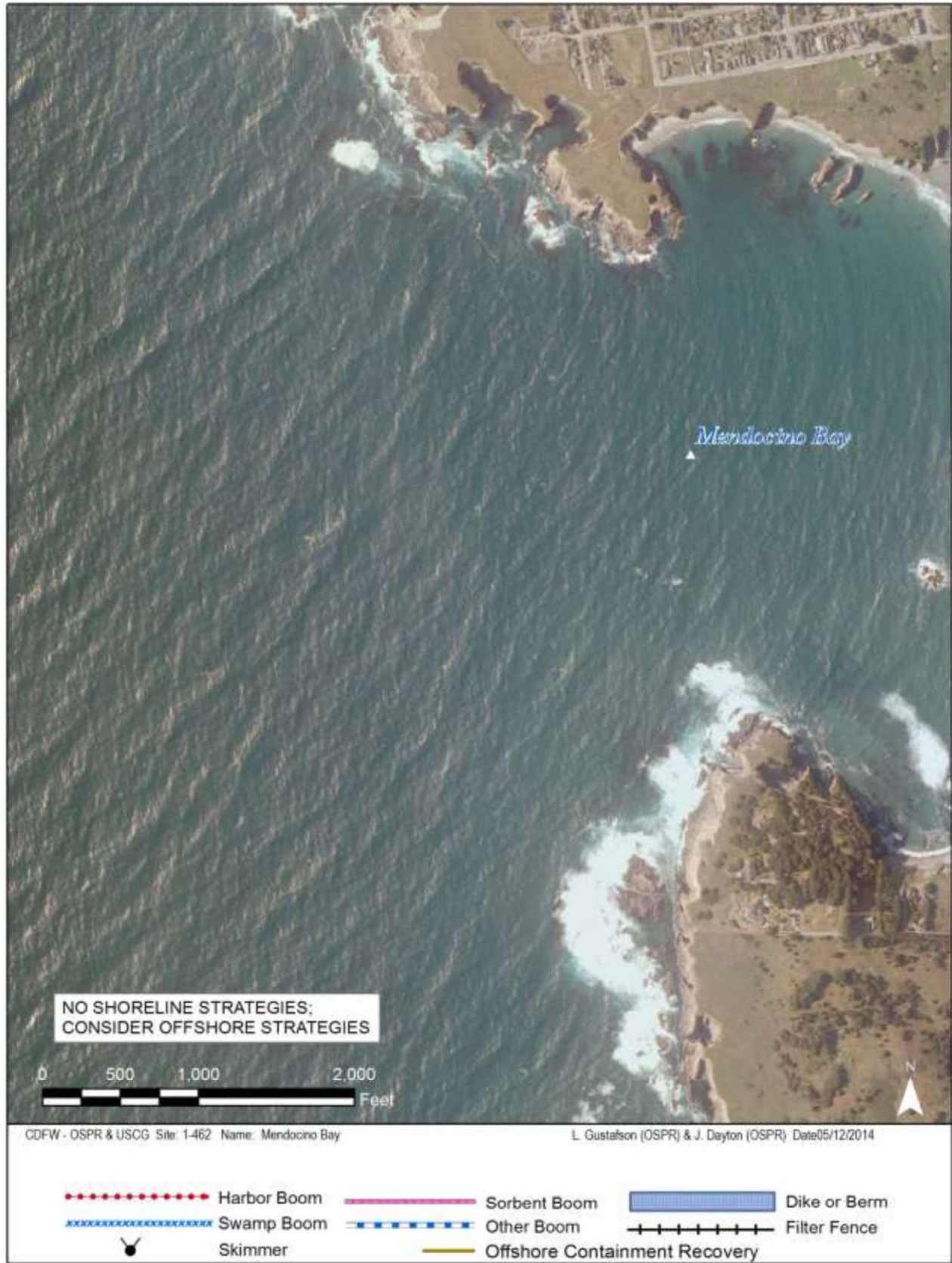
Directions: From Hwy 101 at Willits, take state Hwy 20 west to Hwy 1 at Fort Bragg and go south through Mendocino. Turn left before crossing the bridge over Big River onto North Big River Road, follow road downhill .2 mile to parking lot. At low tide, vehicles could access mouth of river by proceeding along beach appx. .5 mile. At higher tides, no access to mouth is possible by vehicle.

Land Access: Most of Mendocino Bay's shoreline is inaccessible due to steep bluffs and private property. Shoreline is most accessible from Big River Beach.

On-Water Limitations: Small boat launch at Big River

Facilities, Staging Areas, Command Posts, Available Equipment: Limited

Communications Problems:



Imagery: NAIP 2010 (Summer) 4-Band

1-464-A Site Summary - Van Damme State Park and Little River**1-464-A****County:** Mendocino **ACP Division/Segment:** MN - F - S03 MN - F - S04**NOAA Chart:** 18626**Map Book:** CA Road Atlas**Decimal Degrees:** 39.27307 -123.79143**Site Description:**

This site includes the mouth of Little River and nearby shoreline of Van Damme State Beach. This site is within Van Damme State Park but headlands are mostly privately owned. Offshore rocks in the area are managed by BLM as part of the California Coastal National Monument. Site is within the following State Marine Protected Area: Van Damme SMCA. Little River crosses a medium- to coarse- grained sandy beach (Van Damme State Beach) to reach a small crescent shaped bay. Gradient is steep. No wetlands or marsh areas likely to be impacted under most conditions but outlet is open during wet seasons. Offshore rocks, mixed sand and gravel beaches.

Shorebirds forage along Van Damme State Park beach. Seabird rookeries (03-09) nearby include ashy storm-petrel (SSC), pelagic cormorant, pigeon guillemot, western gull, tufted puffin (SSC), roosts (01-12); black oystercatchers nest on offshore rocks and cliffs, osprey (01-12) forage and nest nearby. Harbor seal haulouts. Anadromous salmonids include coho salmon (FE,SE) and steelhead (FT): spawning runs (09-06), juveniles/smolt (02-08), groundfish (EFH), red abalone, kelp beds offshore of beach, algal communities on offshore rocks. Sensitive plant communities nearby include Baker's goldfields, Mendocino Coast paintbrush, supple daisy (all CNPS 1B.2). Western bumblebee.

Resources at Risk:*ESI and Habitat:* 5 Mixed sand and gravel beaches

1A Exposed Rocky Shore

2A Exposed wave-cut platforms in bedrock, mud, or clay

List of Resources at Risk:

	Resource Name	Status	Presence	Sensitivity
Amphibians	foothill yellow-legged frog	SE, SSC	Year-round	Mar-Aug
Birds	shorebirds		Year-round	
Birds	seabirds		Year-round	
Birds	tufted puffin	FP, SSC		Mar-Aug
Birds	Ashy storm petrel	SSC	Year-round	Mar-Oct
Fish	coho salmon - south of Punta Gorda	FE, SE	Year-round	Nov-Apr
Fish	steelhead - Central/Northern California	FT	Year-round	Nov-Apr
Mammals	harbor seal	FP	Year-round	Mar-Jun

FT-Federally Threatened, FE-Federally Endangered, FP-Federally Protected, SE-State Endangered, ST-State Threatened, SP -State Protected, SR-State Rare, SSC-Species of Special Concern, BGEPA-Bald and Golden Eagle Protection Act, SSSP-State Special Status Species

List of Key Contacts:

Type	Name/Title	Organization	Phone
C	/Coordinator	Native American Heritage Commission	(916) 373-3710
C	/Coordinator	Northwest Information Center	(707) 588-8455
O	/24hr	CalFire Howard Forest Emergency Command	(707) 459-5336
O	/	Mendocino County Sheriff's Department	(707) 463-4086
O	/Supervisor Ranger (24hr)	NORCOM State Parks Dispatch	(916) 358-1300
T	/	Bureau of Land Management	(707) 825-2300
T	/	California Dept of Fish and Wildlife, Fort Bragg	(707) 964-9078
T	/Sector Superintendent	California State Parks, Mendocino District	(707) 937-5804
T	/	NOAA National Marine Fisheries Service-Arcata	(707) 822-7201
T	/	US Fish and Wildlife Service-Arcata Field Office	(707) 822-7201

C – Cultural, Historic, Archaeological; E – Entry/Owner/Access; O – Other; S – Safety; T – Trustee; X – Exclusion or Security

Additional Site Summary Comments:

Breeding seabirds will use these rocks for nesting in the spring. Offshore rocks provide roosting and nesting habitat for birds and haulout locations for marine mammals. Care should be taken so that response activities do not flush wildlife from these areas. The rocks are sensitive to human intrusion year round, especially during nesting season (03-09) when the adults are on eggs and until the young have fledged from the nest. The offshore rocks have cultural significance for local tribes.

For further information about coastal access in this area, please refer to the California Coastal Commission's California Coastal Access Guide. For photos of the coastline in this area, please refer to the California Coastal Records Project (www.californiacoastline.org).

Cultural, Historical, and Archeological sites are known to exist in the area, however, the exact locations of these sites must be ascertained by contacting the Native American Heritage Commission at (916) 373-3710, the State Office of Historical Preservation (916) 445-7000, and/or the Northwest Information Center (707) 588-8455.

Concerns and Advice to Responders:

The rugged coastline will prevent onshore response over most of this area. Off-site measures including dispersants should be considered when a spill threatens to impact this area. Overflights should be careful to maintain flight path and altitude clearance distances that are large enough to prevent the flushing of birds and marine mammals from their nests, roosts, and haulouts on the offshore rocks in this area.

Hazard and Restrictions:

Extreme currents, offshore rocks, high energy shoreline, short steep beaches in some areas.

Site Strategies:

Site Validation Level: II

Strategy: 1-464.1 Objective: Minimize impacts to shoreline in impractical response locations.

Strategy: No strategy will be successful under prevailing conditions. Offshore dispersants and/or off-site skimming should be considered. Off-site dispersion may be the only option.

Table of Response Resources

Last Page Update

Strategy: 1-464.2 Objective: Low freshwater flow exclusion strategy.

Strategy: Divert or exclude oil from Little River's tidal area and sensitive habitat during low flows. Hard boom lined with sorbents or pom-poms could be used.

Table of Response Resources

Equipment	Sub-Type	Size	Unit	QTY	Unit	Last Page Update
Boom	Harbor	100 feet				
Other Boom	Oil Snare (pom-pom)	100 feet				
Anchor	Danforth	25 lb		4		
Staff	Staff to Deploy			3		

Logistics:

Directions: From Hwy 101 at Willits, take Hwy 20 west to Hwy 1 at Fort Bragg, go south for 11 miles on Hwy 1 to M.P. 48.03. Van Damme State Park and Little River are directly accessible from Hwy 1. Little River crosses the beach at this point.

Land Access: Shoreline is accessible at beach parking lot, most of surrounding shoreline is inaccessible due to steep bluffs.

On-Water Limitations: Hand launch possible at Van Damme State Beach. Abalone divers frequently launch zodiac-type boats here.

Facilities, Staging Areas, Command Posts, Available Equipment: The parking lot at Little River Beach is adequate for staging local response equipment. The beach has restrooms, but lacks other utilities. Fuel, lodging, supplies are available north on Hwy 1 in Fort Bragg, Mendocino, and Little River.

Communications Problems:

Additional Operational Comments: The cove at Van Damme beach provides some protection for small watercraft.



Imagery: NAIP 2010 (Summer) 4-Band

1-466-B Site Summary - Dark Gulch**1-466-B****County:** Mendocino **ACP Division/Segment:** MN - F - S04**NOAA Chart:** 18626**Map Book:** CA Road Atlas**Decimal Degrees:** 39.24004 -123.77496**Site Description:**

This site includes the mouth of Dark Gulch and shoreline in the vicinity. The shoreline and bluffs are in private ownership. Offshore rocks in the area are managed by BLM as part of the California Coastal National Monument. Steep gradient coastal stream. Cobbled beach with kelp debris. Bedrock headlands. Offshore rocks and seastacks.

Salmonid migrations would occur mostly during high water flow events during winter and spring. Oiling of the stream mouth could cause long lasting damage. Seabird rookeries (03-09) on rocky headlands, offshore rocks, and seastacks include ashy storm-petrel (SSC), pelagic cormorant, pigeon guillemot, western gull, black oystercatcher, marine mammals. Anadromous salmonids include coho salmon (FE, SE), steelhead (FT): spawning runs (09-06), juveniles/smolts (02-08); groundfish (EFH), red abalone, kelp, algal communities. Sensitive plant communities include Mendocino Coast paintbrush and Point Reyes checkerbloom (both CNPS 1B.2).

Resources at Risk:*ESI and Habitat:* 5 Mixed sand and gravel beaches

2A Exposed wave-cut platforms in bedrock, mud, or clay

1A Exposed Rocky Shore

List of Resources at Risk:

	Resource Name	Status	Presence	Sensitivity
Amphibians	Northern red-legged frog	SSC	Year-round	
Birds	seabirds		Year-round	
Fish	coho salmon - south of Punta Gorda	FE, SE	Year-round	Nov-Apr
Fish	steelhead - Central/Northern California	FT	Year-round	Nov-Apr
Mammals	marine mammals	FP	Year-round	
Mammals	Sonoma tree vole	SSC	Year-round	

FT-Federally Threatened, FE-Federally Endangered, FP-Federally Protected, SE-State Endangered, ST-State Threatened, SP -State Protected, SR-State Rare, SSC-Species of Special Concern, BGEPA-Bald and Golden Eagle Protection Act, SSSP-State Special Status Species

List of Key Contacts:

Type	Name/Title	Organization	Phone
C	/Coordinator	Native American Heritage Commission	(916) 373-3710
C	/Coordinator	Northwest Information Center	(707) 588-8455
O	/24hr	CalFire Howard Forest Emergency Command	(707) 459-5336
O	/	Mendocino County Sheriff's Department	(707) 463-4086
T	/	Bureau of Land Management	(707) 825-2300
T	/	NOAA National Marine Fisheries Service-Arcata	(707) 822-7201
T	/	US Fish and Wildlife Service-Arcata Field Office	(707) 822-7201

C – Cultural, Historic, Archaeological; E – Entry/Owner/Access; O – Other; S – Safety; T – Trustee; X – Exclusion or Security

Additional Site Summary Comments:

Breeding seabirds will use these rocks for nesting in the spring. Offshore rocks provide roosting and nesting habitat for birds and haulout locations for marine mammals. Care should be taken so that response activities do not flush wildlife from these areas. The rocks are sensitive to human intrusion year round, especially during nesting season (03-09) when the adults are on eggs and until the young have fledged from the nest. The offshore rocks have cultural significance for local tribes.

For further information about coastal access in this area, please refer to the California Coastal Commission's California Coastal Access Guide. For photos of the coastline in this area, please refer to the California Coastal Records Project (www.californiacoastline.org).

Cultural, Historical, and Archeological sites are known to exist in the area, however, the exact locations of these sites must be ascertained by contacting the Native American Heritage Commission at (916) 373-3710, the State Office of Historical Preservation (916) 445-7000, and/or the Northwest Information Center (707) 588-8455.

Concerns and Advice to Responders:

The rugged coastline will prevent onshore response over most of this area. Off-site measures including dispersants should be considered when a spill threatens to impact this area. Overflights should be careful to maintain flight path and altitude clearance distances that are large enough to prevent the flushing of birds and marine mammals from their nests, roosts, and haulouts on the offshore rocks in this area.

Hazard and Restrictions:

Extreme currents, offshore rocks, high energy shoreline

Site Strategies:**Site Validation Level: II**

Strategy: 1-466.1 Objective: No Onsite Options: Consider Offshore Containment/Recovery/ART

Strategy: This site is best protected by preventing the oil from arriving here, when possible. Off-site response options including dispersants should be considered. Conventional on-scene response is not possible at this site. Protect with off-site response measures only.

Table of Response Resources

Last Page Update**Logistics:**

Directions: From Hwy 101 at Cloverdale, take Hwy 128 to Hwy 1 at the mouth of the Navarro River, go north on Hwy 1 for 5.2 miles to Heritage House Inn (M.P. 45.47). Beach accessible here by foot only. A crane could access bluffs (80 feet above beach). Limited access by boats because of depth limitations.

Land Access: Foot access from Heritage House Inn and other private properties nearby.

On-Water Limitations: None

Facilities, Staging Areas, Command Posts, Available Equipment: None

Communications Problems: Remote, limited communications



1-468-A Site Summary - Albion River**1-468-A****County:** Mendocino **ACP Division/Segment:** MN - F - S04 MN - F - S05**NOAA Chart:** 18626**Map Book:** CA Road Atlas**Decimal Degrees:** 39.2271 -123.77033**Site Description:**

The site to protect is from the mouth of the Albion River upstream to the upper extent of tidal influence. The outer coast has a small semiprotected harbor that is open to navigation to shallow draft vessels. There are offshore rocks and an extensive submerged reef in the nearshore area around the mouth. The shoreline north and south of the mouth is characterized by vertical seawalls and steep rocky bluffs. Offshore rocks near Albion Cove are managed by BLM as part of the California Coastal National Monument but the shoreline is privately owned with a popular campground near the river mouth.

The site has a sensitive tidal marsh upstream and is a popular tourist attraction and should be protected from oiling. The river has a viable population of salmonids. Seabird rookeries (03-09) on rocky headlands, offshore rocks, and seastacks include pelagic cormorant, pigeon guillemot; osprey (01-12); anadromous salmonids include chinook (FT) and coho salmon (FE,SE), steelhead (FT): spawning runs (09-06), juveniles/smolts (02-08); tidewater goby (FE), groundfish (EFH), striped surfperch nursery; red abalone; red-bellied newt (SSC) upstream; eelgrass and associated communities in estuary, extensive areas of surfgrass along vertical seawalls on northern side of entrance bay, fringing marsh within estuary. Sensitive plant communities nearby include Mendocino Coast paintbrush (CNPS 1B.2).

Resources at Risk:*ESI and Habitat:* 8B Sheltered solid man-made structures

3A Fine- to medium-grained sand beaches

2A Exposed wave-cut platforms in bedrock, mud, or clay

List of Resources at Risk:

	Resource Name	Status	Presence	Sensitivity
Birds	seabirds		Year-round	
Fish	coho salmon - south of Punta Gorda	FE, SE	Year-round	Nov-Apr
Fish	chinook salmon - Winter-run	FE, SE	Year-round	Oct-May
Fish	steelhead - Central/Northern California	FT	Year-round	Nov-Apr
Fish	tidewater goby	FE, SSC	Year-round	

FT-Federally Threatened, FE-Federally Endangered, FP-Federally Protected, SE-State Endangered, ST-State Threatened, SP -State Protected, SR-State Rare, SSC-Species of Special Concern, BGEPA-Bald and Golden Eagle Protection Act, SSSP-State Special Status Species

List of Key Contacts:

Type	Name/Title	Organization	Phone
C	/Coordinator	Native American Heritage Commission	(916) 373-3710
C	/Coordinator	Northwest Information Center	(707) 588-8455
E	/	Albion River Campground	(707) 937-0606
O	/24hr	CalFire Howard Forest Emergency Command	(707) 459-5336
O	/	Mendocino County Sheriff's Department	(707) 463-4086
T	/	California Dept of Fish and Wildlife, Fort Bragg	(707) 964-9078
T	/	NOAA National Marine Fisheries Service-Arcata	(707) 822-7201

C – Cultural, Historic, Archaeological; E – Entry/Owner/Access; O – Other; S – Safety; T – Trustee; X – Exclusion or Security

Additional Site Summary Comments:

Breeding seabirds will use these rocks for nesting in the spring. Offshore rocks provide roosting and nesting habitat for birds and haulout locations for marine mammals. Care should be taken so that response activities do not flush wildlife from these areas. The rocks are sensitive to human intrusion year round, especially during nesting season (03-09) when the adults are on eggs and until the young have fledged from the nest. The offshore rocks have cultural significance for local tribes.

For further information about coastal access in this area, please refer to the California Coastal Commission's California Coastal Access Guide. For photos of the coastline in this area, please refer to the California Coastal Records Project (www.californiacoastline.org).

Cultural, Historical, and Archeological sites are known to exist in the area, however, the exact locations of these sites must be ascertained by contacting the Native American Heritage Commission at (916) 373-3710, the State Office of Historical Preservation (916) 445-7000, and/or the Northwest Information Center (707) 588-8455.

Concerns and Advice to Responders:

Excluding oil from impacting this estuary and popular boating and fishing port is a primary concern of this strategy.

Hazard and Restrictions:

Water in the river is shallow at the boat ramp.

Site Strategies:

Site Validation Level: II

Strategy: 1-468.1 Objective: Diversionary boom. Deflect oil away from sensitive habitat.

Strategy: Diversionary boom could be used to deflect oil out of the current and onto the shore or to a suitable collection point where a skimmer can be operated. Place sorbent boom or pompoms upstream of the oil to limit spread on incoming tides.

Table of Response Resources

Equipment	Sub-Type	Size	Unit	QTY	Unit	Last Page Update
Boom	Harbor	300 feet				
Boom	Sorbent	300 feet				
Anchor	Danforth	25 lb		12		
boat	Skiff			1		
Staff	Staff to Deploy			5		

Strategy: 1-468.2 Objective: Minimize impacts to shoreline in impractical response locations, or when site conditions preclude mechanical recovery.

Strategy: Minimize impacts to shoreline in impractical response locations, or when site conditions preclude mechanical recovery. No strategy will be successful under prevailing conditions. Offshore dispersants should be considered.

Table of Response Resources

Last Page Update

Logistics:

Directions: From Hwy 101 at Cloverdale, take Hwy 128 west to Hwy 1 at the mouth of the Navarro River, go north 3.6 miles on Hwy 1 to M.P. 45.47 at north end of the Albion River bridge, turn east on Albion River North Side Road here and follow road downhill to Albion River Campground.

Land Access: Large truck access is possible but access is narrow and winding. Beach shoreline accessible from campground.

On-Water Limitations: The site has a boat ramp for shallow draft vessels.

Facilities, Staging Areas, Command Posts, Available Equipment: The harbor area has adequate staging to provide for local area response needs including a rugged small boat ramp. Public phones are available, but lodging, food and other utilities are very limited on site. For these missing items, please note that it is only a short drive to Ft. Bragg.

Communications Problems: Remote, limited communications



Imagery: NAIP 2010 (Summer) 4-Band

1-470-A Site Summary - Salmon Point and Big Salmon Creek**1-470-A****County:** Mendocino **ACP Division/Segment:** MN - F - S05**NOAA Chart:** 18626**Map Book:** CA Road Atlas**Decimal Degrees:** 39.2138 -123.77583**Site Description:**

This site includes the mouth of Big Salmon Creek and nearby shoreline of Whitesboro Cove and Salmon Point. Offshore rocks in the area are managed by BLM as part of the California Coastal National Monument. Rocky bluffs, offshore rocks, and tidal inlet to Big Salmon Creek. Fine- to medium-grained sandy beach on the northside of the creek. Fringing marsh within Big Salmon Creek.

Limited area of habitat impact on extreme high tides where oiling, and the resulting need for cleaning, could be minimized especially when dealing with persistent products. Seabirds, shorebirds, waterfowl, raptors. Nesting seabird colonies include pelagic cormorant, pigeon guillemot, black oystercatcher, western gull (03-09). The small marsh is visited by foraging grebes, shorebirds and waterfowl including mergansers. California brown pelican (04-11), osprey (01-12), Canada geese. Anadromous salmonids include chinook (FT) and coho salmon (FE,SE), steelhead (FT): spawning runs (09-06), juveniles/smolts (02-08); groundfish (EFH), red abalone. Sensitive plant communities include coastal bluff morning-glory, Mendocino coast paintbrush and perennial goldfields (all CNPS 1B.2).

Resources at Risk:*ESI and Habitat:* 2A Exposed wave-cut platforms in bedrock, mud, or clay

10A Salt - and brackish-water marshes

5 Mixed sand and gravel beaches

List of Resources at Risk:

	Resource Name	Status	Presence	Sensitivity
Birds	seabirds		Year-round	
Birds	shorebirds		Year-round	
Birds	waterfowl		Year-round	
Birds	raptors		Year-round	
Fish	chinook salmon - Winter-run	FE, SE	Year-round	Oct-May
Fish	coho salmon - south of Punta Gorda	FE, SE	Year-round	Nov-Apr
Fish	steelhead - Central/Northern California	FT	Year-round	Nov-Apr

FT-Federally Threatened, FE-Federally Endangered, FP-Federally Protected, SE-State Endangered, ST-State Threatened, SP -State Protected, SR-State Rare, SSC-Species of Special Concern, BGEPA-Bald and Golden Eagle Protection Act, SSSP-State Special Status Species

List of Key Contacts:

Type	Name/Title	Organization	Phone
C	/Coordinator	Native American Heritage Commission	(916) 373-3710
C	/Coordinator	Northwest Information Center	(707) 588-8455
O	/24hr	CalFire Howard Forest Emergency Command	(707) 459-5336
O	/	Mendocino County Sheriff's Department	(707) 463-4086
T	/	Bureau of Land Management, Coastal Natl. Monum	(831) 582-2200
T	/	California Dept of Fish and Wildlife, Fort Bragg	(707) 964-9078
T	/	NOAA National Marine Fisheries Service-Arcata	(707) 822-7201
T	/	US Fish and Wildlife Service-Arcata Field Office	(707) 822-7201

C – Cultural, Historic, Archaeological; E – Entry/Owner/Access; O – Other; S – Safety; T – Trustee; X – Exclusion or Security

Additional Site Summary Comments:

Breeding seabirds will use these rocks for nesting in the spring. Offshore rocks provide roosting and nesting habitat for birds and haulout locations for marine mammals. Care should be taken so that response activities do not flush wildlife from these areas. The rocks are sensitive to human intrusion year round, especially during nesting season (03-09) when the adults are on eggs and until the young have fledged from the nest. The offshore rocks have cultural significance for local tribes.

For further information about coastal access in this area, please refer to the California Coastal Commission’s California Coastal Access Guide. For photos of the coastline in this area, please refer to the California Coastal Records Project (www.californiacoastline.org).

Cultural, Historical, and Archeological sites are known to exist in the area, however, the exact locations of these sites must be ascertained by contacting the Native American Heritage Commission at (916) 373-3710, the State Office of Historical Preservation (916) 445-7000, and/or the Northwest Information Center (707) 588-8455.

Concerns and Advice to Responders:

The rugged coastline will prevent onshore response over most of this area. Off-site measures including dispersants should be considered when a spill threatens to impact this area. Overflights should be careful to maintain flight path and altitude clearance distances that are large enough to prevent the flushing of birds and marine mammals from their nests, roosts, and haulouts on the offshore rocks in this area.

Hazard and Restrictions:

Extreme currents, offshore rocks, high energy shoreline

Site Strategies:

Site Validation Level: II

Strategy: 1-470.1 Objective: Erect Filter Fence

Strategy: Movement of oil upstream could be minimized by the installation of filter fence.

Table of Response Resources

Equipment	Sub-Type	Size	Unit	QTY	Unit	Last Page Update
Other Boom	Pom-pom	200 feet				
skimmer				1		
fence material						
Staff				3		

Logistics:

Directions: From Hwy 101 at Cloverdale, take Hwy 128 to Hwy 1 at the mouth of the Navarro River. Go north on Hwy 1 to M.P. 43.50 at the north end of Salmon Creek bridge and turn west on Spring Grove Road (county route 401). Proceed downhill on private drive to residences along creek mouth. Salmon Point is accessible from private residences at the end of Pacific Reefs Rd south of the Salmon Ck bridge.

Land Access: Foot access only.

On-Water Limitations:

Facilities, Staging Areas, Command Posts, Available Equipment: No staging in this area

Communications Problems: Remote, limited communications.



1-472-A Site Summary - Navarro River State Park**1-472-A****County:** Mendocino **ACP Division/Segment:** MN - G - S01**NOAA Chart:** 18626**Map Book:** CA Road Atlas**Decimal Degrees:** 39.1921 -123.76113**Site Description:**

This site includes the mouth of the Navarro River and associated tidal estuary. The site is within Navarro River State Park and the following State Marine Protected Area: Navarro River Estuary SMCA. Tidal inlet with a well developed marsh system in the estuary. The site extends from the beach at the mouth of the river to just up river of the Highway 1 bridge.

The marsh provides habitat for many kinds of waterfowl, waterbirds, and shorebirds that forage there year-round. Salmonid migrations would occur mostly during high water flow events during winter and spring. Oiling of the stream mouth and estuary could cause long lasting damage to the fish and wildlife living in this watershed. Shorebirds, seabirds, wading birds, waterfowl, raptors. Osprey (01-12), California brown pelican (04-11); anadromous salmonids include chinook (FT) and coho salmon (FE,SE), steelhead (FT): spawning runs (9-06), juveniles/smolts (02-08); groundfish (EFH). Northern red-legged frog (SSC) upstream in estuary. Sensitive plant communities include Baker's goldfields, Mendocino Coast paintbrush, Siskiyou checkerbloom (all CNPS 1B.2).

Resources at Risk:*ESI and Habitat:* 10A Salt - and brackish-water marshes

8A Sheltered scarps in bedrock, mud, or clay

7 Exposed tidal flat

List of Resources at Risk:

	Resource Name	Status	Presence	Sensitivity
Birds	waterfowl		Year-round	
Birds	shorebirds		Year-round	
Birds	seabirds		Year-round	
Birds	wading birds		Year-round	
Birds	raptors		Year-round	
Fish	chinook salmon - Winter-run	FE, SE	Year-round	Oct-May
Fish	coho salmon - south of Punta Gorda	FE, SE	Year-round	Nov-Apr
Fish	steelhead - Central/Northern California	FT	Year-round	Nov-Apr

FT-Federally Threatened, FE-Federally Endangered, FP-Federally Protected, SE-State Endangered, ST-State Threatened, SP -State Protected, SR-State Rare, SSC-Species of Special Concern, BGEPA-Bald and Golden Eagle Protection Act, SSSP-State Special Status Species

List of Key Contacts:

Type	Name/Title	Organization	Phone
C	/Coordinator	Native American Heritage Commission	(916) 373-3710
C	/Coordinator	Northwest Information Center	(707) 588-8455
O	/24hr	CalFire Howard Forest Emergency Command	(707) 459-5336
O	/	Mendocino County Sheriff's Department	(707) 463-4086
O	/Supervisor Ranger (24hr)	NORCOM State Parks Dispatch	(916) 358-1300
T	/	Bureau of Land Management	(707) 825-2300
T	/	California Dept of Fish and Wildlife, Fort Bragg	(707) 964-9078
T	/Sector Superintendent	California State Parks, Mendocino District	(707) 937-5804
T	/	NOAA National Marine Fisheries Service-Arcata	(707) 822-7201
T	/	US Fish and Wildlife Service-Arcata Field Office	(707) 822-7201

C – Cultural, Historic, Archaeological; E – Entry/Owner/Access; O – Other; S – Safety; T – Trustee; X – Exclusion or Security

Additional Site Summary Comments:

For further information about coastal access in this area, please refer to the California Coastal Commission’s California Coastal Access Guide. For photos of the coastline in this area, please refer to the California Coastal Records Project (www.californiacoastline.org).

Cultural, Historical, and Archeological sites are known to exist in the area, however, the exact locations of these sites must be ascertained by contacting the Native American Heritage Commission at (916) 373-3710, the State Office of Historical Preservation (916) 445-7000, and/or the Northwest Information Center (707) 588-8455.

Concerns and Advice to Responders:

Contact State Parks prior to initiating response at this site.

Hazard and Restrictions:

This river swells in the wet season. Response options will be limited by river flow from rainfall.

Site Strategies:

Site Validation Level: II

Strategy: 1-472.1 Objective: Shoreline Pre-Clean: Resource Specialist Supervision Required

Strategy: Pre-clean debris before oil arrives. Debris loads are highly variable from season to season, so this option will need to be assessed at the time of response.

Table of Response Resources

Last Page Update

Strategy: 1-472.2 Objective: Boom Navarro River estuary to exclude oil spread on incoming tides

Strategy: Boom from the rocky northern shore back to the sandy southern shore to prevent oil spread upstream.

Table of Response Resources

Equipment	Sub-Type	Size	Unit	QTY	Unit	Last Page Update
Boom	Harbor	1000 feet				
Anchor	Danforth	25 lb		12		
boat	Skiff			2		
Staff	Staff to Deploy			8		

Logistics:

Directions: Take Hwy 101 to Hwy 128 north of Cloverdale, follow Hwy 128 west to Hwy 1. Turn south on Hwy 1 at the bridge and cross then turn west on Navarro Beach Rd and follow to end.

Land Access: Drive on access for large vehicles, contact State Parks first.

On-Water Limitations: Hand launching for small skiffs only.

Facilities, Staging Areas, Command Posts, Available Equipment: This site has adequate space for staging moderate amounts of equipment, but lacks utilities and facilities to support long term response needs.

Communications Problems: Remote, limited communications

Additional Operational Comments: For Navarro River flow gauge information see:

<https://waterdata.usgs.gov/monitoring-location/11468000/#parameterCode=00065&period=P7D>



1-474-A Site Summary - Greenwood Creek to Cuffey's Cove**1-474-A****County:** Mendocino **ACP Division/Segment:** MN - G - S002**NOAA Chart:** 18626**Map Book:** CA Road Atlas**Decimal Degrees:** 39.1357 -123.72873**Site Description:**

This site includes the coastline between Cuffey's Cove and Greenwood Creek near the community of Elk. Greenwood Creek State Beach is managed by State Parks. Offshore rocks in the area are managed by BLM as part of the California Coastal National Monument. Rocky headlands, offshore rocks, and seasonal inlet to Greenwood Creek with small pockets of fringing marsh behind the coarse-grained sand beach.

The marsh provides habitat for many kinds of waterfowl, waterbirds, and shorebirds that forage there year-round. Salmonid migrations through the estuary would occur mostly during high water flow events during winter and spring. Seabird nesting (03-09) nearby include pelagic cormorant, pigeon guillemot, ash storm-petrel (SSC), and shorebirds including black oystercatcher. Pacific harbor seal haulout area, river otters; anadromous salmonids include chinook (FT) and coho salmon (FE,SE), steelhead (FT): spawning runs (09-06), juveniles/smolts (02-08); groundfish (EFH), red abalone. Sensitive plant communities nearby include deceiving sedge, Mendocino Coast paintbrush, Point Reyes checkerbloom, short-leaved evax (all CNPS 1B.2).

Resources at Risk:*ESI and Habitat:* 2A Exposed wave-cut platforms in bedrock, mud, or clay

1A Exposed Rocky Shore

6A Gravel Beach

List of Resources at Risk:

	Resource Name	Status	Presence	Sensitivity
Amphibians	Northern red-legged frog	SSC	Year-round	
Birds	waterfowl		Year-round	
Birds	shorebirds		Year-round	
Birds	seabirds		Year-round	
Fish	chinook salmon - Winter-run	FE, SE	Year-round	Oct-May
Fish	coho salmon - south of Punta Gorda	FE, SE	Year-round	Nov-Apr
Fish	steelhead - Central/Northern California	FT	Year-round	Nov-Apr
Mammals	harbor seal	FP	Year-round	Mar-Jun

FT-Federally Threatened, FE-Federally Endangered, FP-Federally Protected, SE-State Endangered, ST-State Threatened, SP -State Protected, SR-State Rare, SSC-Species of Special Concern, BGEPA-Bald and Golden Eagle Protection Act, SSSP-State Special Status Species

List of Key Contacts:

Type	Name/Title	Organization	Phone
C	/Coordinator	Native American Heritage Commission	(916) 373-3710
C	/Coordinator	Northwest Information Center	(707) 588-8455
O	/24hr	CalFire Howard Forest Emergency Command	(707) 459-5336
O	/	Mendocino County Sheriff's Department	(707) 463-4086
O	/Supervisor Ranger (24hr)	NORCOM State Parks Dispatch	(916) 358-1300
T	/	Bureau of Land Management	(707) 825-2300
T	/	California Dept of Fish and Wildlife, Fort Bragg	(707) 964-9078
T	/Sector Superintendent	California State Parks, Mendocino District	(707) 937-5804
T	/	NOAA National Marine Fisheries Service-Arcata	(707) 822-7201
T	/	US Fish and Wildlife Service-Arcata Field Office	(707) 822-7201

C – Cultural, Historic, Archaeological; E – Entry/Owner/Access; O – Other; S – Safety; T – Trustee; X – Exclusion or Security

Additional Site Summary Comments:

Breeding seabirds will use these rocks for nesting in the spring. Offshore rocks provide roosting and nesting habitat for birds and haulout locations for marine mammals. Care should be taken so that response activities do not flush wildlife from these areas. The rocks are sensitive to human intrusion year round, especially during nesting season (03-09) when the adults are on eggs and until the young have fledged from the nest. The offshore rocks have cultural significance for local tribes.

For further information about coastal access in this area, please refer to the California Coastal Commission's California Coastal Access Guide. For photos of the coastline in this area, please refer to the California Coastal Records Project (www.californiacoastline.org).

Cultural, Historical, and Archeological sites are known to exist in the area, however, the exact locations of these sites must be ascertained by contacting the Native American Heritage Commission at (916) 373-3710, the State Office of Historical Preservation (916) 445-7000, and/or the Northwest Information Center (707) 588-8455.

Concerns and Advice to Responders:

The rugged coastline will prevent onshore response over most of this area. Off-site measures including dispersants should be considered when a spill threatens to impact this area. Overflights should be careful to maintain flight path and altitude clearance distances that are large enough to prevent the flushing of birds and marine mammals from their nests, roosts, and haulouts on the offshore rocks in this area.

Hazard and Restrictions:

Extreme currents, offshore rocks, high energy shoreline, short steep beaches in some areas

Site Strategies:**Site Validation Level: II**

Strategy: 1-474.1 Objective: Shoreline Pre-Clean: Resource Specialist Supervision Required

Strategy: Pre-clean debris before oil arrives. This site needs to be assessed for pre-cleaning (equipment) requirements. (See strategy #2)

Table of Response Resources

Last Page Update

Strategy: 1-474.2 Objective: Assess site conditions for response needs.

Strategy: Complete an overflight or send personnel to the site to assess the prevailing conditions and appropriate response, if any.

Table of Response Resources

Last Page Update**Logistics:**

Directions: Take Hwy 101 to Hwy 128 just north of Cloverdale, follow Hwy 128 west to Hwy 1, turn south on Hwy 1 until town of Elk is reached. Access to Greenwood Beach and the mouth of Greenwood Creek is by trail from the parking lot across from the Elk General Store. The trail has been accessed by heavy machinery and could be quickly improved to allow access by heavy machinery equipment again. Foot access by St Anthony's Beach and Harbor House Inn Beach by private foot trail.

Land Access: Locked gate access, OK for heavy machinery. Contact State Parks first.

On-Water Limitations:

Facilities, Staging Areas, Command Posts, Available Equipment: The parking lot in Elk has a moderate amount of space, but lacks restrooms (vault toilet in parking lot). Phones, fuel, food, and supplies may be available in the area, lodging is limited to small inns and B&B's.

Communications Problems: Remote, limited communications

Additional Operational Comments:



1-476-B Site Summary - Bonee Gulch**1-476-B****County:** Mendocino **ACP Division/Segment:** MN - G - S002 MN - G - S003**NOAA Chart:** 18620,18626 **Map Book:** CA Road Atlas **Decimal Degrees:** 39.1137 -123.71573**Site Description:**

This site is south of and immediately adjacent to the Cuffey's Creek to Greenwood Creek site (ACP site 1-475-A). Bonee Gulch drains into Greenwood Creek. Offshore rocks in the area are managed by BLM as part of the California Coastal National Monument. Rocky bluffs and offshore rocks.

Seabird colonies primarily Brandt's and pelagic cormorants: > 100 pairs of nesting birds; ashy storm-petrel (SSC); marine mammals; anadromous salmonids include chinook (FT) and coho salmon (FE/SE), steelhead trout (FT): all life stages, estuary use year round; red abalone, kelp; sensitive plant communities nearby include deceiving sedge, Mendocino Coast paintbrush, short-leaved evax (all CNPS 1B.2).

Resources at Risk:*ESI and Habitat:* 1A Exposed Rocky Shore

5 Mixed sand and gravel beaches

4 Coarse-grained sand beaches

List of Resources at Risk:

	Resource Name	Status	Presence	Sensitivity
Amphibians	foothill yellow-legged frog	SE, SSC	Year-round	Mar-Aug
Birds	Brandt's cormorant	FP	Year-round	
Birds	pelagic cormorant	FP	Year-round	
Fish	coho salmon - south of Punta Gorda	FE, SE	Year-round	Nov-Apr
Fish	steelhead - Central/Northern California	FT	Year-round	Nov-Apr
Fish	chinook salmon - Winter-run	FE, SE	Year-round	Oct-May

FT-Federally Threatened, FE-Federally Endangered, FP-Federally Protected, SE-State Endangered, ST-State Threatened, SP -State Protected, SR-State Rare, SSC-Species of Special Concern, BGEPA-Bald and Golden Eagle Protection Act, SSSP-State Special Status Species

List of Key Contacts:

Type	Name/Title	Organization	Phone
C	/Coordinator	Native American Heritage Commission	(916) 373-3710
C	/Coordinator	Northwest Information Center	(707) 588-8455
O	/24hr	CalFire Howard Forest Emergency Command	(707) 459-5336
O	/	Mendocino County Sheriff's Department	(707) 463-4086
T	/	Bureau of Land Management	(707) 825-2300
T	/Sector Superintendent	California State Parks, Mendocino District	(707) 937-5804
T	/	NOAA National Marine Fisheries Service-Arcata	(707) 822-7201
T	/	US Fish and Wildlife Service-Arcata Field Office	(707) 822-7201

C – Cultural, Historic, Archaeological; E – Entry/Owner/Access; O – Other; S – Safety; T – Trustee; X – Exclusion or Security

Additional Site Summary Comments:

Breeding seabirds will use these rocks for nesting in the spring. Offshore rocks provide roosting and nesting habitat for birds and haulout locations for marine mammals. Care should be taken so that response activities do not flush wildlife from these areas. The rocks are sensitive to human intrusion year round, especially during nesting season (03-09) when the adults are on eggs and until the young have fledged from the nest. The offshore rocks have cultural significance for local tribes.

For further information about coastal access in this area, please refer to the California Coastal Commission’s California Coastal Access Guide. For photos of the coastline in this area, please refer to the California Coastal Records Project (www.californiacoastline.org).

Cultural, Historical, and Archeological sites are known to exist in the area, however, the exact locations of these sites must be ascertained by contacting the Native American Heritage Commission at (916) 373-3710, the State Office of Historical Preservation (916) 445-7000, and/or the Northwest Information Center (707) 588-8455.

Concerns and Advice to Responders:

The rugged coastline will prevent onshore response over most of this area. Off-site measures including dispersants should be considered when a spill threatens to impact this area. Overflights should be careful to maintain flight path and altitude clearance distances that are large enough to prevent the flushing of birds and marine mammals from their nests, roosts, and haulouts on the offshore rocks in this area. Response efforts that cause any disturbance to marine mammals or nesting seabirds should be avoided whenever possible.

Hazard and Restrictions:

Extreme currents, high energy shoreline, offshore rocks

Site Strategies:

Site Validation Level: II

Strategy: 1-476.1 Objective: No Onsite Options: Consider Offshore Containment/Recovery/ART
Strategy: This site is best protected by preventing the oil from arriving here, when possible. Off-site response options including dispersants should be considered. Apply dispersants to off-site oil before it arrives at this sensitive site.

Table of Response Resources

Last Page Update

Logistics:

Directions: Take Hwy 101 to Hwy 128 just north of Cloverdale, follow Hwy 128 west to Hwy 1. Bonee Gulch is south of Greenwood Creek/Cuffey's Cove area just off Hwy 1, just south of the community of Elk. This site has no access.

Land Access:

On-Water Limitations:

Facilities, Staging Areas, Command Posts, Available Equipment: none

Communications Problems: Remote, limited communications



1-478-A Site Summary - Elk Creek**1-478-A****County:** Mendocino **ACP Division/Segment:** MN - G - S003 MN - H - S01**NOAA Chart:** 18620**Map Book:** CA Road Atlas**Decimal Degrees:** 39.0999 -123.70943**Site Description:**

This site includes the tidal estuary at the mouth of Elk Creek. Offshore rocks in the area are managed by BLM as part of the California Coastal National Monument. Inlet to Elk Creek with a marsh system along margins of the channel.

The marsh provides habitat for many kinds of waterfowl, waterbirds, and shorebirds that forage there year-round. Salmonid migrations through the estuary would occur mostly during high water flow events during winter and spring. Seabird nesting (03-09) nearby include pelagic cormorant, pigeon guillemot, and shorebirds including black oystercatcher. Harbor seal haulout area, river otters; anadromous salmonids include chinook (FT) and coho salmon (FE,SE), steelhead (FT): spawning runs (09-06), juveniles/smolts (02-08); groundfish (EFH); northern red-legged frog (SSC) in marsh; red abalone; kelp.

Resources at Risk:*ESI and Habitat:* 2A Exposed wave-cut platforms in bedrock, mud, or clay

4 Coarse-grained sand beaches

List of Resources at Risk:

	Resource Name	Status	Presence	Sensitivity
Amphibians	Northern red-legged frog	SSC	Year-round	
Birds	waterfowl		Year-round	
Birds	shorebirds		Year-round	
Birds	seabirds		Year-round	
Fish	coho salmon - south of Punta Gorda	FE, SE	Year-round	Nov-Apr
Fish	steelhead - Central/Northern California	FT	Year-round	Nov-Apr

FT-Federally Threatened, FE-Federally Endangered, FP-Federally Protected, SE-State Endangered, ST-State Threatened, SP -State Protected, SR-State Rare, SSC-Species of Special Concern, BGEP-A-Bald and Golden Eagle Protection Act, SSSP-State Special Status Species

List of Key Contacts:

Type	Name/Title	Organization	Phone
C	/Coordinator	Native American Heritage Commission	(916) 373-3710
C	/Coordinator	Northwest Information Center	(707) 588-8455
O	/24hr	CalFire Howard Forest Emergency Command	(707) 459-5336
O	/	Mendocino County Sheriff's Department	(707) 463-4086
T	/	Bureau of Land Management	(707) 825-2300
T	/	California Dept of Fish and Wildlife, Fort Bragg	(707) 964-9078
T	/	NOAA National Marine Fisheries Service-Arcata	(707) 822-7201
T	/	US Fish and Wildlife Service-Arcata Field Office	(707) 822-7201

C – Cultural, Historic, Archaeological; E – Entry/Owner/Access; O – Other; S – Safety; T – Trustee; X – Exclusion or Security

Additional Site Summary Comments:

Breeding seabirds will use these rocks for nesting in the spring. Offshore rocks provide roosting and nesting habitat for birds and haulout locations for marine mammals. Care should be taken so that response activities do not flush wildlife from these areas. The rocks are sensitive to human intrusion year round, especially during nesting season (03-09) when the adults are on eggs and until the young have fledged from the nest. The offshore rocks have cultural significance for local tribes.

For further information about coastal access in this area, please refer to the California Coastal Commission's California Coastal Access Guide. For photos of the coastline in this area, please refer to the California Coastal Records Project (www.californiacoastline.org).

Cultural, Historical, and Archeological sites are known to exist in the area, however, the exact locations of these sites must be ascertained by contacting the Native American Heritage Commission at (916) 373-3710, the State Office of Historical Preservation (916) 445-7000, and/or the Northwest Information Center (707) 588-8455.

Concerns and Advice to Responders:

The local marsh would be very difficult to clean once it becomes oiled. Excluding oil from reaching this area would minimize damage to the environment.

Hazard and Restrictions:

Private property. Owner extremely private & protective, send law enforcement to make initial contact.

Site Strategies:

Site Validation Level: II

Strategy: 1-478.1 Objective: No Onsite Options: Consider Offshore Containment/Recovery/ART

Strategy: On-site response options are limited to collection of oil or oily debris removal only during high creek flows. Protect with off-site response efforts.

Table of Response Resources

Last Page Update

Strategy: 1-478.2 Objective: Shoreline Pre-Clean: Resource Specialist Supervision Required

Strategy: This beach can collect large amounts of large woody debris, which could require heavy equipment to move, preferably before it becomes oiled. A SCAT team should evaluate this response option before oil arrives.

Table of Response Resources

Last Page Update

Strategy: 1-478.3 Objective: Low freshwater flow strategy for Elk Creek protection when the estuary mouth is open.

Strategy: Berm, dam or dike with underflow dam during low flow conditions and when the time is available to mobilize the equipment and personnel needed to construct a protective berm.

Table of Response Resources

Equipment	Sub-Type	Size	Unit	QTY	Unit	Last Page Update
Bulldozer or Loader						
Stakes, shovels, haybales						
Staff	Staff to Deploy			8		
Staff	Staff to Tend			2		

Logistics:

Directions: Take Hwy 1 to Hwy 128 just north of Cloverdale, follow Hwy 128 west to Hwy 1, go south on Hwy 1 to M.P. 31.55. Permission for access through locked gate must be obtained from property owner. Owner extremely private & protective, send law enforcement to make initial contact.

Land Access: Private, locked gate access. Contact owner with Mendocino Sheriff assistance.

On-Water Limitations:

Facilities, Staging Areas, Command Posts, Available Equipment: None available.

Communications Problems: Remote, limited communications



1-480-C Site Summary - Irish Gulch**1-480-C****County:** Mendocino **ACP Division/Segment:** MN - H - S02 MN - H - S03**NOAA Chart:** 18620**Map Book:** CA Road Atlas**Decimal Degrees:** 39.02021 -123.69113**Site Description:**

Irish Gulch is a small stream with a small tidal estuary and beach backed with large amounts of woody debris. Private access to beach owned/managed by Irish Beach Rental Agency. Seasonal inlet to Irish Gulch. Access is restricted by locked gates and separate one way roads up and down to the beach.

The small estuary and marsh provides habitat for many kinds of waterfowl, waterbirds, and shorebirds that forage there year-round. Salmonid migrations through the estuary would occur mostly during high water flow events during winter and spring. Shorebirds, seabirds, raptors; Point Arena mountain beaver (FE) habitat nearby; Anadromous salmonids include chinook (FT) and coho salmon (FE,SE), steelhead (FT): spawning runs (09-06), juveniles/smolt (02-08); groundfish (EFH), southern torrent salamander (SSC) upstream in marsh. Sensitive plant communities including Mendocino Coast paintbrush, perennial goldfields (both CNPS 1B.2).

Resources at Risk:*ESI and Habitat:* 3A Fine- to medium-grained sand beaches

2A Exposed wave-cut platforms in bedrock, mud, or clay

6A Gravel Beach

List of Resources at Risk:

	Resource Name	Status	Presence	Sensitivity
Amphibians	Southern torrent salamander	SSC	Year-round	
Birds	shorebirds		Year-round	
Birds	seabirds		Year-round	
Birds	raptors		Year-round	
Fish	coho salmon - south of Punta Gorda	FE, SE	Year-round	Nov-Apr
Fish	chinook salmon - Winter-run	FE, SE	Year-round	Oct-May
Fish	steelhead - Central/Northern California	FT	Year-round	Nov-May
Mammals	Pt. Arena mountain beaver	FE	Year-round	

FT-Federally Threatened, FE-Federally Endangered, FP-Federally Protected, SE-State Endangered, ST-State Threatened, SP -State Protected, SR-State Rare, SSC-Species of Special Concern, BGEPA-Bald and Golden Eagle Protection Act, SSSP-State Special Status Species

List of Key Contacts:

Type	Name/Title	Organization	Phone
C	/Coordinator	Native American Heritage Commission	(916) 373-3710
C	/Coordinator	Northwest Information Center	(707) 588-8455
E	/	Irish Beach Rental Agency	(707) 882-2467
O	/24hr	CalFire Howard Forest Emergency Command	(707) 459-5336
O	/	Mendocino County Sheriff's Department	(707) 463-4086
T	/	NOAA National Marine Fisheries Service-Arcata	(707) 822-7201
T	/	US Fish and Wildlife Service-Arcata Field Office	(707) 822-7201

C – Cultural, Historic, Archaeological; E – Entry/Owner/Access; O – Other; S – Safety; T – Trustee; X – Exclusion or Security

Additional Site Summary Comments:

For further information about coastal access in this area, please refer to the California Coastal Commission's California Coastal Access Guide. For photos of the coastline in this area, please refer to the California Coastal Records Project (www.californiacoastline.org).

Cultural, Historical, and Archeological sites are known to exist in the area, however, the exact locations of these sites must be ascertained by contacting the Native American Heritage Commission at (916) 373-3710, the State Office of Historical Preservation (916) 445-7000, and/or the Northwest Information Center (707) 588-8455.

Concerns and Advice to Responders:

Irish Beach is a natural collection point for large woody debris. This material can become a long term source for re-oiling once oiled which can greatly increase the long term damage to the environment unless it is prevented from becoming oiled, or removed and disposed of once it is oiled.

Hazard and Restrictions:

One way roads to beach with controlled access: contact Irish Beach Rental Agency.

Site Strategies:

Site Validation Level: II

Strategy: 1-480.1 Objective: Shoreline Pre-Clean: Resource Specialist Supervision Required

Strategy: Pre-clean the beach of heavy woody debris before oil arrives. Using heavy equipment, move large woody debris above the swash line. UC should pre-evaluate the execution of this activity since the site is large, remote, and the debris load extremely heavy.

Table of Response Resources

Last Page Update

Logistics:

Directions: Take Hwy 101 north to Hwy 128 just north of Cloverdale, follow Hwy 128 to Hwy 1, go south on Hwy 1, exit west onto Irish Beach Dr at M.P. 25.37, turn left and downhill onto a very narrow single lane road with sharp switchbacks. Exit the beach (road is marked) along a similar road that tends to have fewer turns. The exit is at M.P. 25.57. The exit road would serve as an access road for a front end loader or bulldozer. The access road is gated and a key must be obtained from Irish Beach Rental Agency at about M.P. 25.37.

Land Access: Locked gate access. Contact Irish Beach Rental Agency first. 707-882-2467.

On-Water Limitations: none

Facilities, Staging Areas, Command Posts, Available Equipment: none

Communications Problems: Remote, limited communications

Additional Operational Comments: Precleaning at this site may save a lot of disposal or clean up costs if black oil threatens this beach. Large amounts of heavy woody debris often collect on this beach. Moving this material above the high tide line before oil arrives should be considered when and if response time allows.



1-482-B Site Summary - Alder Creek**1-482-B****County:** Mendocino **ACP Division/Segment:** MN - H - S03 MN - H - S04**NOAA Chart:** 18640 **Map Book:** CA Road Atlas **Decimal Degrees:** 39.00821 -123.70113**Site Description:**

This site includes a small tidal estuary formed at the mouth of Alder Creek south of Irish Beach. This site is at the north end of Manchester State Park. Seasonal inlet to Alder Creek with a small marsh along creek and fine- to medium-grained sands on the beach. San Andreas Fault is on this area and runs into the ocean near this site.

Point Arena mountain beaver live in burrows and are present around this site. Western snowy plover are present on the beach. Do not drive response vehicles off road in the brush or on beach without State Parks authorization.

The small estuary and marsh provides habitat for many kinds of waterfowl, waterbirds, and shorebirds that forage there year-round. Salmonid migrations through the estuary would occur mostly during high water flow events during winter and spring. Shorebirds, seabirds, raptors, waterfowl, wading birds, juvenile gulls, Caspian tern, western snowy plover (FT)(01-12): FWS Critical Habitat, nesting 03-08; Point Arena mountain beaver (FE,SSC) habitat nearby; anadromous salmonids include chinook (FT) and coho salmon (FE,SE), steelhead (FT): spawning runs (09-06), juveniles/smolts (02-08); groundfish (EFH), foothill yellow-legged frogs (FE,SSC) upstream in marsh. Sensitive plant communities including Baker's goldfields, coastal bluff morning-glory, Mendocino Coast paintbrush, perennial goldfields (all CNPS 1B.2). There are wetlands at the bottom of the access road.

Resources at Risk:

ESI and Habitat: 5 Mixed sand and gravel beaches
10A Salt - and brackish-water marshes

List of Resources at Risk:

	Resource Name	Status	Presence	Sensitivity
Amphibians	foothill yellow-legged frog	SE, SSC	Year-round	Mar-Aug
Amphibians	California red-legged frog	FT, SSC	Year-round	Nov-Apr
Birds	Western snowy plover	FT, SSC	Year-round	Mar-Oct
Birds	Caspian tern	FP		Mar-Jun
Fish	coho salmon - south of Punta Gorda	FE, SE	Year-round	Nov-Apr
Fish	steelhead - Central/Northern California	FT	Year-round	Nov-Apr
Mammals	Pt. Arena mountain beaver	FE	Year-round	

FT-Federally Threatened, FE-Federally Endangered, FP-Federally Protected, SE-State Endangered, ST-State Threatened, SP -State Protected, SR-State Rare, SSC-Species of Special Concern, BGEPA-Bald and Golden Eagle Protection Act, SSSP-State Special Status Species

List of Key Contacts:

Type	Name/Title	Organization	Phone
C	/Coordinator	Native American Heritage Commission	(916) 373-3710
C	/Coordinator	Northwest Information Center	(707) 588-8455
O	/24hr	CalFire Howard Forest Emergency Command	(707) 459-5336
O	/	Mendocino County Sheriff's Department	(707) 463-4086
O	/Supervisor Ranger (24hr)	NORCOM State Parks Dispatch	(916) 358-1300
T	/	California Dept of Fish and Wildlife, Fort Bragg	(707) 964-9078
T	/Sector Superintendent	California State Parks, Mendocino District	(707) 937-5804
T	/	NOAA National Marine Fisheries Service-Arcata	(707) 822-7201
T	/	US Fish and Wildlife Service-Arcata Field Office	(707) 822-7201

C – Cultural, Historic, Archaeological; E – Entry/Owner/Access; O – Other; S – Safety; T – Trustee; X – Exclusion or Security

Additional Site Summary Comments:

For further information about coastal access in this area, please refer to the California Coastal Commission’s California Coastal Access Guide. For photos of the coastline in this area, please refer to the California Coastal Records Project (www.californiacoastline.org).

Cultural, Historical, and Archeological sites are known to exist in the area, however, the exact locations of these sites must be ascertained by contacting the Native American Heritage Commission at (916) 373-3710, the State Office of Historical Preservation (916) 445-7000, and/or the Northwest Information Center (707) 588-8455.

Concerns and Advice to Responders:

Try to minimize oil spread into the back part of the small estuary where clean up would be difficult. Contact State Parks prior to initiating response here due to presence of endangered Point Arena mountain beaver and threatened western snowy plover.

Hazard and Restrictions:

The county road leading to the site is closed to vehicles due to a major slump and road failure. Road is currently blocked by cement barriers. All-terrain vehicles may be able to gain access. Adjacent private property owner may be able to provide alternate access through pastures west of the county road.

Site Strategies:

Site Validation Level: II

Strategy: 1-482.1 Objective: Shoreline Pre-Clean: Resource Specialist Supervision Required

Strategy: Pre-clean debris before oil arrives.

Table of Response Resources

Last Page Update

Strategy: 1-482.2 Objective: Boom across the mouth of the Alder Creek to prevent oil from spreading into the small estuary

Strategy: On low flows, stretch a boom across the mouth to exclude oil and protect vegetation from oiling.

Table of Response Resources

Equipment	Sub-Type	Size	Unit	QTY	Unit	Last Page Update
Boom	Swamp	300 feet				
Staff	Staff to Deploy			5		

Logistics:

Directions: Take Hwy 101 north to Hwy 128 just north of Cloverdale, follow Hwy 128 west to Hwy 1, go south on Hwy 1 and turn west on first road south of Alder Creek bridge (Between M.P. 22.50 and M.P.22.48). Follow road about 1 mile to creek mouth. Either side of creek easily accessible by heavy machinery. Heavy equipment would need to cross the wetland/drainage area before reaching the creek. Depending on season and flow rates, the north side of creek may not be accessible by equipment or foot.

Land Access: ATV access across a washed out dirt road. Contact State Parks first. It may be possible to access from Irish Beach in the north with 4WD or all-terrain vehicles.

On-Water Limitations: none

Facilities, Staging Areas, Command Posts, Available Equipment: none

Communications Problems: Remote, limited communications.

Additional Operational Comments: The site will only need protection if the surf is high enough to bring oil over the berm and into the estuary.



1-484-A Site Summary - Garcia River and Manchester State Beach**1-484-A****County:** Mendocino **ACP Division/Segment:** MN - I - S01 MN - I - S02**NOAA Chart:** 18640**Map Book:** CA Road Atlas**Decimal Degrees:** 38.95431 -123.73363**Site Description:**

This site includes the tidal estuaries of the Garcia River and several smaller seasonal streams. The site includes BLM's California Coastal National Monument Point Arena-Stornetta Unit near the river and the adjacent Manchester State Park to the north. Tidal inlet to the Garcia River and seasonal tidal inlets to Brush Creek, Lagoon Lake (also known as Hunter's Lagoon), and Davis Lake. Approximately 4 miles of sandy beach ranging from fine- to coarse-grained between Garcia River and Alder Creek. First response will probably be limited to the booming of the Garcia River if conditions safely allow that response activity.

Point Arena mountain beaver live in burrows and are present around this site. Stay on roads to avoid burrow destruction. Western snowy plover are present on the beach. Do not drive response vehicles off road in the brush or on beach without State Parks authorization. California red-legged frogs and western pond turtles present upstream in marsh habitat.

The estuary and marsh provides habitat for many kinds of waterfowl, waterbirds, and shorebirds that forage there year-round. Salmonid migrations through the estuary would occur mostly during high water flow events during winter and spring. Shorebirds, seabirds, raptors, waterfowl, wading birds, juvenile gulls, black oystercatcher, Caspian tern, pigeon gillnet, western snowy plover (FT)(01-12): FWS Critical Habitat, nesting 03-08; Point Arena mountain beaver (FE,SSC) habitat nearby; anadromous salmonids include chinook (FT) and coho salmon (FE,SE), steelhead (FT): spawning runs (09-06), juveniles/smolt (02-08); tidewater goby (FE)(01-12) have been observed in Lagoon Lake; California red-legged frogs (FT,SSC) in marsh, western pond turtles upstream in river estuary. Sensitive plant communities including pink sand-verbena (CNPS 1B.1), Baker's goldfields, coastal bluff morning-glory, Mendocino Coast paintbrush, Pacific gilia, perennial goldfields, pygmy cypress, supple daisy (all CNPS 1B.2); saltmarsh habitat upstream in river estuary; Behren's silverspot butterfly (FE), Lotis blue butterfly (FE) historical location.

Resources at Risk:*ESI and Habitat:* 3A Fine- to medium-grained sand beaches

7 Exposed tidal flat

10A Salt - and brackish-water marshes

8A Sheltered scarps in bedrock, mud, or clay

List of Resources at Risk:

	Resource Name	Status	Presence	Sensitivity
Amphibians	California red-legged frog	FT, SSC	Year-round	
Birds	Western snowy plover	FT, SSC	Year-round	Mar-Oct
Fish	steelhead - Central/Northern California	FT	Year-round	Nov-Apr
Fish	tidewater goby	FE, SSC	Year-round	
Fish	salmonids		Year-round	
Insects	Behren's silverspot butterfly	FE	Year-round	
Insects	Lotis blue butterfly	FE	Year-round	
Mammals	Pt. Arena mountain beaver	FE	Year-round	

FT-Federally Threatened, FE-Federally Endangered, FP-Federally Protected, SE-State Endangered, ST-State Threatened, SP -State Protected, SR-State Rare, SSC-Species of Special Concern, BGEPA-Bald and Golden Eagle Protection Act, SSSP-State Special Status Species

List of Key Contacts:

Type	Name/Title	Organization	Phone
C	/Coordinator	Native American Heritage Commission	(916) 373-3710
C	/Coordinator	Northwest Information Center	(707) 588-8455
E	/	Point Arena Light Station	(707) 882-2777
O	/24hr	CalFire Howard Forest Emergency Command	(707) 459-5336
O	/	Mendocino County Sheriff's Department	(707) 463-4086
O	/Supervisor Ranger (24hr)	NORCOM State Parks Dispatch	(916) 358-1300
T	/	Bureau of Land Management	(707) 825-2300
T	/	Bureau of Land Management, Ukiah Field Office	(707) 468-4000
T	/	California Dept of Fish and Wildlife, Fort Bragg	(707) 964-9078
T	/Sector Superintendent	California State Parks, Mendocino District	(707) 937-5804
T	/Resource Protection Specialist (24hr)	Greater Farallones National Marine Sanctuary	(650) 479-5311
T	/	NOAA National Marine Fisheries Service-Arcata	(707) 822-7201
T	/	US Fish and Wildlife Service-Arcata Field Office	(707) 822-7201

C – Cultural, Historic, Archaeological; E – Entry/Owner/Access; O – Other; S – Safety; T – Trustee; X – Exclusion or Security

Additional Site Summary Comments:

For further information about coastal access in this area, please refer to the California Coastal Commission's California Coastal Access Guide. For photos of the coastline in this area, please refer to the California Coastal Records Project (www.californiacoastline.org).

Cultural, Historical, and Archeological sites are known to exist in the area, however, the exact locations of these sites must be ascertained by contacting the Native American Heritage Commission at (916) 373-3710, the State Office of Historical Preservation (916) 445-7000, and/or the Northwest Information Center (707) 588-8455.

Concerns and Advice to Responders:

The estuary upstream of the river mouth attracts lots of waterbirds. The marsh would be difficult to clean if it becomes oiled. Contact State Parks prior to initiating response due to presence of endangered Point Arena mountain beaver and threatened western snowy plover in area.

Hazard and Restrictions:

The area just south of this site is a high energy shoreline that is typically not safe for on-water response in the nearshore where submerged rocky reef is the dominant habitat feature. There is no vehicle access to the north; limited access by all-terrain vehicles may be possible at Stoneboro Rd. Contact State Parks for authorization.

Site Strategies:**Site Validation Level: II**

Strategy: 1-484.1 Objective: Shoreline Pre-Clean: Resource Specialist Supervision Required

Strategy: Pre-clean debris before oil arrives.

Table of Response Resources

Equipment	Sub-Type	Size	Unit	QTY	Unit	Last Page Update
trash bags & rakes				100		
Staff	Staff to Deploy					

Strategy: 1-484.2 Objective: Prevent oiling of Davis Lake, Brush Creek and Lagoon Lake wetlands when high surf could push oil over the beachface.

Strategy: Visually check by overflight or on-site observations to ensure that oil is not being washed over the foredunes. On-site prevention response should be coordinated with State Parks personnel.

Table of Response Resources

Last Page Update

Strategy: 1-484.3 Objective: Boom from the rock face to beach oil on the back side of the sand spit. Deployment may be possible during medium freshwater outflows when ocean wave action is low or moderate.

Strategy: Diversionary boom could be used to divert oil out of the current and onto the shore or to a suitable collection point where a skimmer can be operated. Place sorbent boom or pompoms upstream of the oil to limit spread on incoming tides.

Table of Response Resources

Equipment	Sub-Type	Size	Unit	QTY	Unit	Last Page Update
Boom	Harbor	600 feet				
Anchor	Danforth	25 lb		3		
boat	Skiff			1		
Staff	Staff to Deploy			5		
staff	Staff to Tend			5		

Strategy: 1-484.4 Objective: Suck oil off the beach when large enough quantities are available for recovery using a vacuum truck.

Strategy: A vacuum truck can access the parking lot at the end of Kinney Road. Oil that has been collected off the beach can be sucked into a truck by stretching a large hose (400'+) from the parking lot to the beach. This minimizes the amount of traffic traveling through endangered Point Arena mountain beaver habitat in the dune areas.

Table of Response Resources

Equipment	Sub-Type	Size	Unit	QTY	Unit	Last Page Update
Vac truck				1		
Hose		400+ feet				
Staff	Staff to Deploy			2		

Logistics:

Directions: From Hwy 101, go north to Hwy 128 just north of Cloverdale, follow Hwy 128 west to Hwy 1, go south on Hwy 1 to Stoneboro Road (note Coastal Access sign at intersection) and turn west. Continue to parking lot. Continue on foot across dunes to beach. Walk south on the beach appx. 1 mile to the mouth of the Garcia River. Lagoon Lake (aka Hunter's Lagoon): walk north on the beach for about 1 mile from the parking lot on Stoneboro Road. Brush Creek: take Kinney Rd (appx .5 mile N of the town of Manchester) west from Hwy 1 to the end near the beach. Walk across the dunes to the creek. The inlet may be located south of Kinney Rd access. Davis Lake: all-terrain vehicle access may be possible seasonally from gated/locked access road, appx 0.2 mi S of Alder Creek Rd. Contact State Parks for directions, authorization and key.

Land Access: ATV on trails. Some areas w/ seasonal locked gates. Contact State Park for access.

On-Water Limitations:

Facilities, Staging Areas, Command Posts, Available Equipment: Local staging with moderate amounts of space can be found at the end of Stoneboro Road and also at the end of Kinney Road. Kinney Road has pit toilets and non-potable water, with good access for vac truck response. KOA camping, lodging, and fuel can be found in Point Arena. Supplies may also be found at the hardware store in town.

Communications Problems: Remote, limited communications.

Additional Operational Comments: For Garcia River flow gauge information see: <https://waterdata.usgs.gov/monitoring-location/11467590/#parameterCode=00065&period=P7D>



1-486-B Site Summary - Point Arena**1-486-B****County:** Mendocino **ACP Division/Segment:** MN - I - S01 MN - I - S02**NOAA Chart:** 18640 **Map Book:** CA Road Atlas **Decimal Degrees:** 38.95571 -123.74143**Site Description:**

This site includes the rugged coastline between Point Arena and Arena Cove including the port and pier near the town of Point Arena. Most of the shoreline and offshore rocks in the area are managed by BLM as part of the California Coastal National Monument and Point Arena-Stornetta Unit. This site includes the Point Arena State Marine Reserve, Point Arena State Marine Conservation Area, and Sea Lion Cove SMCA. Rocky headlands and offshore rocks.

Point Arena mountain beaver live in burrows and are present around this site. Stay on roads to avoid burrow destruction. Do not drive response vehicles off road in the brush.

Resources found near the site include seabird colonies, primarily pigeon guillemots and pelagic cormorants, Laysan albatross seasonally, raptors, juvenile gulls, black oystercatcher. Marine mammals including Steller sea lions; Point Arena mountain beaver (FE,SSC) habitat nearby. Red abalone, groundfish (EFH). Sensitive plant communities include Northern Coastal Bluff Scrub, vegetation nearby includes coast lily (CNPS 1B.1), Baker's goldfields, coastal bluff morning-glory, deceiving sedge, Humboldt Bay owl's clover, marsh microseris, Mendocino Coast paintbrush, Mendocino dodder, perennial goldfields, short-leaved evax, supple daisy (all CNPS 1B.2); Behren's silverspot butterfly (FE), Lotis blue butterfly (FE) historical location, western bumble bee.

Resources at Risk:*ESI and Habitat:* 2A Exposed wave-cut platforms in bedrock, mud, or clay

1A Exposed Rocky Shore

6A Gravel Beach

List of Resources at Risk:

	Resource Name	Status	Presence	Sensitivity
Birds	seabirds		Year-round	
Birds	Laysan albatross	FP		Jul-Nov
Insects	Behren's silverspot butterfly	FE	Year-round	
Insects	Lotis blue butterfly	FE	Year-round	
Mammals	Pt. Arena mountain beaver	FE	Year-round	
Mammals	Steller sea lion	FP	Year-round	Aug-Apr

FT-Federally Threatened, FE-Federally Endangered, FP-Federally Protected, SE-State Endangered, ST-State Threatened, SP -State Protected, SR-State Rare, SSC-Species of Special Concern, BGEPA-Bald and Golden Eagle Protection Act, SSSP-State Special Status Species

List of Key Contacts:

Type	Name/Title	Organization	Phone
C	/Coordinator	Native American Heritage Commission	(916) 373-3710
C	/Coordinator	Northwest Information Center	(707) 588-8455
E	/	Point Arena Light Station	(707) 882-2777
O	/24hr	CalFire Howard Forest Emergency Command	(707) 459-5336
O	/	Mendocino County Sheriff's Department	(707) 463-4086
O	/Supervisor Ranger (24hr)	NORCOM State Parks Dispatch	(916) 358-1300
O	/	Point Arena Pier	(707) 882-2583
O	/	Wharfmaster's	(707) 882-3171
T	/	Bureau of Land Management	(707) 825-2300
T	/Sector Superintendent	California State Parks, Mendocino District	(707) 937-5804
T	/Resource Protection Specialist (24hr)	Greater Farallones National Marine Sanctuary	(650) 479-5311
T	/	NOAA National Marine Fisheries Service-Arcata	(707) 822-7201
T	/	US Fish and Wildlife Service-Arcata Field Office	(707) 822-7201

C – Cultural, Historic, Archaeological; E – Entry/Owner/Access; O – Other; S – Safety; T – Trustee; X – Exclusion or Security

Additional Site Summary Comments:

Breeding seabirds will use these rocks for nesting in the spring. Offshore rocks provide roosting and nesting habitat for birds and haulout locations for marine mammals. Care should be taken so that response activities do not flush wildlife from these areas. The rocks are sensitive to human intrusion year round, especially during nesting season (03-09) when the adults are on eggs and until the young have fledged from the nest. The offshore rocks have cultural significance for local tribes.

For further information about coastal access in this area, please refer to the California Coastal Commission's California Coastal Access Guide. For photos of the coastline in this area, please refer to the California Coastal Records Project (www.californiacoastline.org).

Cultural, Historical, and Archeological sites are known to exist in the area, however, the exact locations of these sites must be ascertained by contacting the Native American Heritage Commission at (916) 373-3710, the State Office of Historical Preservation (916) 445-7000, and/or the Northwest Information Center (707) 588-8455.

Concerns and Advice to Responders:

The rugged coastline will prevent onshore response over most of this area. Off-site measures including dispersants should be considered when a spill threatens to impact this area. Overflights should be careful to maintain flight path and altitude clearance distances that are large enough to prevent the flushing of birds and marine mammals from their nests, roosts, and haulouts on the offshore rocks in this area.

Hazard and Restrictions:

Extreme currents, offshore rocks, high energy shoreline, short steep beaches in some areas.

Site Strategies:**Site Validation Level: II**

Strategy: 1-486.1 Objective: No Onsite Options: Consider Offshore Containment/Recovery/ART
Strategy: Minimize shoreline impacts by offshore response. Open coastal rocky shore conditions will usually preclude on-site response here. Off-site alternative response strategies should be considered when applicable. Dispersion may be the only viable response option.

Table of Response Resources

Last Page Update**Logistics:**

Directions: Take Hwy 101 north to Hwy 128 just north of Cloverdale, follow Hwy 128 west to Hwy 1, go south on Hwy 1. To reach the point and lighthouse, turn west onto Lighthouse Road. This road runs along the bluffs near the ocean. Beach access is not possible. The Lighthouse grounds area is open from 10:00 AM to 3:30 PM. Check the Coastal Resource Guide for contacts to access grounds at other times. To reach the port and Arena Cove, turn west on Port Rd in town of Point Arena and follow to end of road.

Land Access: Foot access only down steep cliffs

On-Water Limitations: Rocky coast with dangerous nearshore conditions. Boat launch by 10,000 lb. davit hoist at Arena Cove Pier.

Facilities, Staging Areas, Command Posts, Available Equipment: Staging is available at Arena Cove which is South on Hwy 1 in the town of Pt. Arena. The pier is found off Hwy 1 by turning onto Iversen Avenue and going east one mile. There is lodging, a coffee shop, restaurant, in the area. A marine hoist for launching boats on the pier, rest rooms and phones are also near by.

Communications Problems: Remote, limited communications



9812.2 Response Summary Tables

A summary of the response resources is listed by site and sub-strategy next.

Summary of ACP 1 GRA 4 Response Resources by Site and Sub-Strategy

Site	Site Name	Equipment	Sub-Type	Size/Unit	QTY/Unit
Sub-Strategy	PREVENTION OBJECTIVE OR CONDITION FOR DEPLOYMENT				
1-400	Morgan Rock				
.1	No Onsite Options: Consider Offshore Containment/Recovery/ART				
1-402	Seal Rocks				
.1	No Onsite Options: Consider Offshore Containment/Recovery/ART				
1-404	Jackass Creek				
.1	No Onsite Options: Consider Offshore Containment/Recovery/ART				
1-406	Little Jackass Creek				
.1	No Onsite Options: Consider Offshore Containment/Recovery/ART				
1-408	Usal Creek				
.1	Assess on-site conditions before responding to this remote location.				
	Staff				2
	helicopter				1
1-410	Shoreline Rock				
.1	No Onsite Options: Consider Offshore Containment/Recovery/ART				
1-412	Soldier Frank Point				
.1	No Onsite Options: Consider Offshore Containment/Recovery/ART				
1-414	Rockport Bay and Cottaneva Creek				
.1	No Onsite Options: Consider Offshore Containment/Recovery/ART				
1-416	Hardy Creek				
.1	Fly over or visit site to determine if any response is needed				
	helicopter				1
1-430	Ten Mile River				
.1	Boom oil to prevent spread on an incoming tide, and strand oil for easy collection on the south side of the estuary.				
	Boom	Harbor		600 feet	
	boat	Skiff			2
	Staff	Staff to Deploy			10
	Staff	Staff to Tend			2
	Boom	Sorbent		600 feet	
	Anchor	Danforth		25 lb	6
.2	Shoreline Pre-Clean: Resource Specialist Supervision Required				
	Staff	Staff to Deploy			1
1-432	Inglenook Creek and Sandhill Lake Creek				
.1	General response: clean up after the beach has been oiled.				
1-440	Pudding Creek				
.1	Boom and strand oil for collection near the parking lot and access road				
	boat	Skiff			1
	Anchor	Danforth		25 lb	3
	Boom	Harbor		300 ft	
	Staff	Staff to Deploy			5
1-442	Soldier Point				
.1	No Onsite Options: Consider Offshore Containment/Recovery/ART				

Site Site Name**Sub-Strategy PREVENTION OBJECTIVE OR CONDITION FOR DEPLOYMENT**

Equipment	Sub-Type	Size/Unit	QTY/Unit
1-444 Noyo Harbor Entrance and Dolphin Cove			
.1 - Collect oil on an incoming tide to prevent spread into the inner harbor			
Boom	Sorbent	1200 feet	
Boom	Harbor	1200 feet	
Anchor	Danforth	25 lb	12
boat	Skiff		1
Crane	For deploying skimmer or barge		1
Staff	Staff to Deploy		10
Staff	Staff to Tend		4
skimmer	SPS/SFS		1
1-448 South Fort Bragg			
.1 - No Onsite Options: Consider Offshore Containment/Recovery/ART			
1-452 Caspar Point			
.1 - No Onsite Options: Consider Offshore Containment/Recovery/ART			
1-454 Caspar Creek and Doyle Creek			
.1 - Exclusion boom Caspar Creek to prevent oil from moving upstream on an incoming tide.			
Staff	Staff to Deploy		8
Anchor	Danforth	25 lb	6
Boom	Harbor	300 feet	
.2 - Exclusion boom Doyle Creek to prevent oil from moving upstream on an incoming tide.			
Boom	Harbor	200 feet	
Anchor	Danforth	25 lb	4
Staff	Staff to Deploy		8
.3 - Install a filter fence in Doyle Creek to prevent oil from moving upstream on an incoming tide.			
Staff	Staff to Tend		2
Staff	Staff to Deploy		8
Line & Stakes			
Other Boom	Pom-pom	200 feet	
.4 - Dam Doyle Creek to prevent oil from moving upstream on an incoming tide.			
staff	Staff to Deploy		8
Sandbags			
Heavy Equipment	Front Loader		1
Staff	Staff to Tend		2
1-456 Pt Cabrillo to Russian Gulch			
.1 - Minimize oiling of Russian Gulch's tidal area			
Other Boom	Pom-pom	450 feet	
Staff	Staff to Deploy		5
Stakes & Line			
1-458 Mendocino Headlands State Park			
.1 - No Onsite Options: Consider Offshore Containment/Recovery/ART			
1-460 Big River			
.1 - Divert incoming oil to the north shore for collection when oil present			
Staff	Staff to Deploy		10
boat	Skiff		2
Anchor	Danforth	25 lb	10
Boom	Sorbent	2000 feet	
Boom	Harbor	1000 feet	
1-462 Mendocino Bay			
.1 - No Onsite Options: Consider Offshore Containment/Recovery/ART			

Site Site Name**Sub-Strategy PREVENTION OBJECTIVE OR CONDITION FOR DEPLOYMENT**

Equipment	Sub-Type	Size/Unit	QTY/Unit
1-464 Van Damme State Park and Little River			
.1 - Minimize impacts to shoreline in impractical response locations.			
.2 - Low freshwater flow exclusion strategy.			
Staff	Staff to Deploy		3
Other Boom	Oil Snare (pom-pom)	100 feet	
Boom	Harbor	100 feet	
Anchor	Danforth	25 lb	4

1-466 Dark Gulch

.1 - No Onsite Options: Consider Offshore Containment/Recovery/ART

1-468 Albion River

.1 - Diversions boom. Deflect oil away from sensitive habitat.

Anchor	Danforth	25 lb	12
Boom	Harbor	300 feet	
Boom	Sorbent	300 feet	
boat	Skiff		1
Staff	Staff to Deploy		5

.2 - Minimize impacts to shoreline in impractical response locations, or when site conditions preclude mechanical recovery.

1-470 Salmon Point and Big Salmon Creek

.1 - Erect Filter Fence

Other Boom	Pom-pom	200 feet	
skimmer			1
fence material			
Staff			3

1-472 Navarro River State Park

.1 - Shoreline Pre-Clean: Resource Specialist Supervision Required

.2 - Boom Navarro River estuary to exclude oil spread on incoming tides

Boom	Harbor	1000 feet	
Anchor	Danforth	25 lb	12
boat	Skiff		2
Staff	Staff to Deploy		8

1-474 Greenwood Creek to Cuffey's Cove

.1 - Shoreline Pre-Clean: Resource Specialist Supervision Required

.2 - Assess site conditions for response needs.

1-476 Bonee Gulch

.1 - No Onsite Options: Consider Offshore Containment/Recovery/ART

1-478 Elk Creek

.1 - No Onsite Options: Consider Offshore Containment/Recovery/ART

.2 - Shoreline Pre-Clean: Resource Specialist Supervision Required

.3 - Low freshwater flow strategy for Elk Creek protection when the estuary mouth is open.

Stakes, shovels, haybales			
Staff	Staff to Deploy		8
Staff	Staff to Tend		2
Bulldozer or Loader			

1-480 Irish Gulch

.1 - Shoreline Pre-Clean: Resource Specialist Supervision Required

Sub-Strategy **PREVENTION OBJECTIVE OR CONDITION FOR DEPLOYMENT**

Equipment	Sub-Type	Size/Unit	QTY/Unit
1-482 Alder Creek			
.1 - Shoreline Pre-Clean: Resource Specialist Supervision Required			
.2 - Boom across the mouth of the Alder Creek to prevent oil from spreading into the small estuary			
Boom	Swamp	300 feet	
Staff	Staff to Deploy		5
1-484 Garcia River and Manchester State Beach			
.1 - Pre-clean debris before oil arrives.			
Staff	Staff to Deploy		
trash bags & rakes			100
.2 - Prevent oiling of Davis Lake, Brush Creek and Lagoon Lake wetlands when high surf could push oil over the beachface.			
.3 - Boom from the rock face to beach oil on the back side of the sand spit. Deployment may be possible during medium freshwater outflows when ocean wave action is low or moderate.			
boat	Skiff		1
staff	Staff to Tend		5
Staff	Staff to Deploy		5
Anchor	Danforth	25 lb	3
Boom	Harbor	600 feet	
.4 - Suck oil off the beach when large enough quantities are available for recovery using a vacuum truck.			
Vac truck			1
Hose		400+ feet	
Staff	Staff to Deploy		2

1-486 Point Arena

.1 - No Onsite Options: Consider Offshore Containment/Recovery/ART

9812.3 Lists of Economic Resources Susceptible to Oiling

A summary of Human Health and Safety Sites and Economic Resources is listed by GRA. Refer to Section 9804 for more information.

Economic Sites - Mendocino County

Site Information	Site Number & Location	Lat/Long & Priority
Westport- Union Landing State Beach 25000 Hillshore Dr Westport CA 95488 Phone: 707-937-5804	Site Number: 1-4-MN-100-D Operational Division:	Water Intakes [Non-Human Health and Safety Lat/Long: 39.68 -123.79
Site Description: State park with water treatment plant; public water treatment up creek; Alt phone: 707-964-4406		
Wages Creek Beach 377000 CA-1 Westport CA 95488 Phone: (707)964-2964	Site Number: 1-4-MN-105-D Operational Division:	Parks, Beaches, Recreational Areas D Lat/Long: 39.6513 -123.785
Site Description: Public water treatment plant just up creek		
Cape Vizcaino Westport CA 95488 Phone:	Site Number: 1-4-MN-110-D Operational Division:	Parks, Beaches, Recreational Areas D Lat/Long: 39.727099 -123.831964
Site Description: Od-growth redwoods		
Seaside Creek Beach CA 95437 Phone:	Site Number: 1-4-MN-115-D Operational Division:	Parks, Beaches, Recreational Areas D Lat/Long: 39.559051 -123.766405
Site Description:		
Mackerricher State Park 24100 Mackerricher Rd Fort Bragg CA 95437 Phone: (707)937-2032	Site Number: 1-4-MN-120-D Operational Division:	Parks, Beaches, Recreational Areas D Lat/Long: 39.49 -123.79
Site Description: State park with water treatment plant (source= Lake Cleone)		
Noyo River Phone: (707)-964-4719	Site Number: 1-4-MN-125-HHS Operational Division:	First Responders' On Water Facilities HHS Lat/Long: 39.43 -123.81
Site Description: two marinas; USCG station, public water treatment plant up river 5 miles		
Point Cabrillo State Park 45300 Lighthouse Rd Mendocino CA 95460 Phone: (707)-937-2032	Site Number: 1-4-MN-130-HHS Operational Division:	Human Health and Safety or Critical Infrastructure Lat/Long: 39.35 -123.83
Site Description: State park with water treatment (source= spring)		
Russian Gulch State Beach 12301 N Highway 1 Mendocino CA 95460 Phone: (707)937-2032	Site Number: 1-4-MN-135-HHS Operational Division:	Human Health and Safety or Critical Infrastructure Lat/Long: 39.33 -123.81
Site Description: State park with water treatment plant (source= creek)		
Van Damme State Beach 8001 N Highway 1 Little River CA 95456 Phone: (707)937-2032	Site Number: 1-4-MN-140-HHS Operational Division:	Human Health and Safety or Critical Infrastructure Lat/Long: 39.27 -123.79
Site Description: State Park with water treatment plant (source = creek)		