


ACP 2 - GRA 10 Environ Site Overview

- Environmental Sensitive Sites
- Operational Division Lines
- ACP_Division_Names
- California Counties



Calif. Dept. of Fish and Wildlife
 Office of Spill Prevention and Response
 Data Source: OSPR GIS
 Requestor: C. Shinn
 Author: G. Ewing
 Date Created: 3/25/2022
 NAD_1983_California_Teale_Albers

ACP 2 - GRA 10 Environmental Site Overview

Contra Costa, San Joaquin Counties

0 0.75 1.5 3 Miles

0 0.75 1.5 3 Kilometers



ACP 2 – East Delta

9823 East Delta (GRA 10)	3
9823.1 Geographic Response Strategies for Environmental Sensitive Sites.....	3
9823.1.1 GRA 10 Site Index	3
9823.2 Response Summary Tables	55
9823.3 Lists of Economic Resources Susceptible to Oiling	61
Figure 1: Environmental Sensitive Sites + Operational Divisions Overview	1

9823 East Delta (GRA 10)

9823.1 Geographic Response Strategies for Environmental Sensitive Sites

9823.1.1 GRA 10 Site Index

Site #	Site Name	Page #
2-010	San Joaquin River, Port of Stockton	4
2-015	Calaveras River Mouth at San Joaquin River	8
2-018	Burns Cutoff at Rough and Ready Island	11
2-020	San Joaquin River, Stockton to Lathrop Reach	14
2-021	French Camp Slough	18
2-030	San Joaquin River, Roberts Island Reach	22
2-033	Fourteenmile Slough	26
2-040	San Joaquin River, Hog Island Cut Complex	29
2-045	Disappointment Slough	33
2-050	San Joaquin River, Ward Cut Islands Complex	37
2-060	San Joaquin River, Mandeville/Venice Tips Complex	41
2-065	Little Potato Slough	44
2-070	Potato Slough	48
2-080	White's Slough	51

County: San Joaquin **ACP Division/Segment:****NOAA Chart:** 18661 SACRAMENTO / **Map Book:** SF Bay and Delta **Decimal Degrees:** 37.951486 -121.335827
SAN JOAQUIN RIVER**Site Description:**

Site is from intersection of San Joaquin River and Deep Water Channel at the Port of Stockton (R 48) to terminus of harbor east of I-5. This deepwater port is heavily developed with commercial wharves and facilities. The margins are either heavily rip-rapped or have seawalls and piers. Some mature trees line the edges. This is an area with high likelihood of originating spills due to frequency of vessel transfers.

Resources at Risk:*ESI and Habitat:* 8C Sheltered riprap

8B Sheltered solid man-made structures

9B Vegetated low banks

List of Resources at Risk:

	Resource Name	Status	Presence	Sensitivity
Birds	tri-colored blackbirds	FP, SSC		Mar-Apr
Birds	Swainson's hawk	FP, ST		Mar-Sep
Birds	burrowing owl	SSC		Mar-Apr
Fish	steelhead - Central/Northern California	FT		Nov-Apr
Fish	delta smelt	FT, SE		Mar-May
Reptiles	giant garter snake	FT, ST		Jul-Oct

FT-Federally Threatened, FE-Federally Endangered, FP-Federally Protected, SE-State Endangered, ST-State Threatened, SP -State Protected, SR-State Rare, SSC-Species of Special Concern, BGEPA-Bald and Golden Eagle Protection Act, SSSP-State Special Status Species

List of Key Contacts:

Type	Name/Title	Organization	Phone
C	/Coordinator	Native American Heritage Commission	(916) 373-3710
C	/Coordinator	Northwest Information Center	(707) 588-8455
E	/Dispatch, 24-hr	Alameda County Sheriffs Department	(510) 667-7721
E	/Manager	Central Delta Water Agency	(209) 969-7755
E	/Security	Stockton Marina	(209) 332-9450
O	/Dispatch, 24-hr	California Department of Water Resources	(916) 574-2714
S	/Emergency Contact (24hr)	Port of Stockton	(209) 946-0245
S	/Dispatch, 24-hr	San Joaquin Office of Emergency Services	(209) 953-6200
T	/Environmental Program Manager	CA Dept. of Fish & Wildlife, Bay Delta Region	(707) 576-2837
T	/Restoration Ecologist	US Department of Agriculture	(530) 304-2304
T	/Spill Response Coordinator	USFWS, SF Bay-Delta Office	(916) 799-0588

C – Cultural, Historic, Archaeological; E – Entry/Owner/Access; O – Other; S – Safety; T – Trustee; X – Exclusion or Security

Additional Site Summary Comments:

Swainson's Hawk and burrowing owl nest and forage north of and along the harbor.

Concerns and Advice to Responders:

This site has a relatively high probability of spills occurring due to proximity of tank farms, vessels, and industrial petroleum supplies. Although there are ecological concerns here, the objective is to confine oil to this site and prevent it from moving to other sites, particularly to upstream. Oil issues within the site are penetration into riprap, oiling of pilings and collection behind seawalls and under wharves.

Hazard and Restrictions:

Beware of ship traffic and wharf equipment operations. Aerial traffic beware of powerlines. Note pipeline crossings under SJR just upstream from Harbor.

Site Strategies:**Site Validation Level: II**

Strategy: 2-010.1 Objective: Exclusion/Containment/Collection booming at Port mouth

Strategy: a. Set 1300' 9x9+ Hboom across Port mouth at a diagonal. Anchor/attach one boom end to wharf #9 seawall and angle across channel to fend oil to North shore. Leave a trailing boom length to maintain seal during tidal changes. Wind wash can be a problem here. Use 50ft Oil Snare (OS), 100ft sorbent boom to collect oil that may accumulate. Contact IC if oil accumulates in skimmable quantities.

b. Close off passages under south side wharf. Oil can travel through the open spaces under Wharf #9. Lay boom under east end of Wharf #9 and also across openings at west end. Leave trailing ends to keep seal during tidal flux.

Table of Response Resources

Equipment	Sub-Type	Size	Unit	QTY	Unit	Last Page Update
Boom	Harbor	9x9 inch		2000	feet	
Boom	Oil Snare (pom-pom)			50	feet	
Boom	Sorbent			2100	feet	
Anchor	Danforth	25 lb		8		
Vessel	Boom Boat			1		
Vessel	Skiff or Punt			1		
Staff	Staff to Deploy			5		

Strategy: 2-010.2 Objective: Exclusion/Collection/Containment boom at San Joaquin River mouth at Port junction. See San Joaquin R, Stockton to Lathrop Reach.

Strategy: If needed, deploy 2-020 San Joaquin River, Stockton to Lathrop Reach: Set 6X6 Sboom from dolphin southwest of Wharf #9 diagonally across river mouth to channel side of Rough and Ready Island. Anchor to keep a long diagonal downstream. Skim oil in San Joaquin from eddy at tip of Rough & Ready Island and oil from harbor from east side land sites near dolphin.

Table of Response Resources

Equipment	Sub-Type	Size	Unit	QTY	Unit	Last Page Update
Boom	Swamp	6x6 inch		1500	feet	
Boom	Sorbent			1000	feet	
Anchor	Danforth	22 lb		4		
Vessel	Skiff or Punt			1		
Staff	Staff to Deploy			3		

Strategy: 2-010.3 Objective: Oil Recovery with shoreside skimming

Strategy: Deploy skimmers when oil accumulates in skimmable quantities. Skim at north bank attachment (strategy .1A). Consult with IC prior to the initiation of this strategy.

Table of Response Resources

Equipment	Sub-Type	Size	Unit	QTY	Unit	Last Page Update
skimmer	self propelled			1		
Staff	Staff to Deploy			3		

Logistics:

Directions: Key access to site is by boat from marinas within and just downstream from Stockton Harbor. Levee road to north and wharves on south side are accessible via surface streets off of I-5 exits north and south of harbor.

Land Access: Access from levees.

On-Water Limitations: Deep draft, shallower in SJR. Stockton harbor area marina facilities.

Facilities, Staging Areas, Command Posts, Available Equipment: South wharves (or north levee road) (place on DIAGRAM) is a ready deployment site with good access. Otherwise transport material by skiff.

Communications Problems: Good cell reception.



County: San Joaquin **ACP Division/Segment:****NOAA Chart:** 18661 SACRAMENTO / **Map Book:** SF Bay and Delta **Decimal Degrees:** 37.96658 -121.36769
SAN JOAQUIN RIVER**Site Description:**

Site extends from mouth on Stockton Deep Water Channel (at G 41 opposite Burns Cutoff river mouth), approx 3 miles up river to I-5 overpass. Though urbanized, this is a biologically rich and diverse site. This seasonal river is wide and deep at mouth but narrows and shallows rapidly upstream, with margins varying from heavily rip-rapped, revegetated levees to backyard piers to pockets of emergent freshwater marsh vegetation, berm islands and mature trees. Snags and shallows are common in this moderate energy environment.

Resources at Risk:*ESI and Habitat:* 8C Sheltered riprap

9B Vegetated low banks

8B Sheltered solid man-made structures

List of Resources at Risk:

	Resource Name	Status	Presence	Sensitivity
Birds	tri-colored blackbirds	FP, SSC		Mar-Apr
Birds	Swainson's hawk	FP, ST		Mar-Sep
Fish	delta smelt	FT, SE		Mar-May
Fish	longfin smelt	ST		Nov-May
Fish	steelhead - Central/Northern California	FT		Nov-Apr
Fish	chinook salmon - Winter-run	FE, SE		Oct-May
Reptiles	giant garter snake	FT, ST		Jul-Oct

FT-Federally Threatened, FE-Federally Endangered, FP-Federally Protected, SE-State Endangered, ST-State Threatened, SP -State Protected, SR-State Rare, SSC-Species of Special Concern, BGEPA-Bald and Golden Eagle Protection Act, SSSP-State Special Status Species

List of Key Contacts:

Type	Name/Title	Organization	Phone
C	/Coordinator	Native American Heritage Commission	(916) 373-3710
C	/Coordinator	Northwest Information Center	(707) 588-8455
E	/Manager	Central Delta Water Agency	(209) 969-7755
O	/Dispatch, 24-hr	California Department of Water Resources	(916) 574-2714
S	/Dispatch, 24-hr	San Joaquin Office of Emergency Services	(209) 953-6200
T	/Environmental Program Manager	CA Dept. of Fish & Wildlife, Bay Delta Region	(707) 576-2837
T	/Restoration Ecologist	US Department of Agriculture	(530) 304-2304
T	/Spill Response Coordinator	USFWS, SF Bay-Delta Office	(916) 799-0588

C – Cultural, Historic, Archaeological; E – Entry/Owner/Access; O – Other; S – Safety; T – Trustee; X – Exclusion or Security

Additional Site Summary Comments:

Beware of submerged obstacles.

Concerns and Advice to Responders:

Concern is to close river mouth to exclude oil from entering the river and affecting upstream areas, or, if oil originates up river, keep it confined and prevent it from oiling other sites. Penetration into marsh areas, riprap, and animal and burrows in levees, islands and uplands. Emergent freshwater marsh vegetation cleaning issues.

Hazard and Restrictions:

Aerial traffic beware of powerlines. Regarding boat handling, beware of shallows, snags and mud bars. Beware of Poison Oak.

Site Strategies:

Site Validation Level: II

Strategy: 2-015.1 Objective: Exclude/Contain boom at the Calaveras River mouth on San Joaquin River

Strategy: Set boom across River mouth. Anchor one boom end near downstream riprap bank. Anchor upstream boom end upriver near docks, leaving a trailing boom length to maintain seal during tidal vacillations. Skim riprap closure if spill is in river. Back with sorbent. Wind fetch can be a problem here. Possible Shore Side Skimmer collection site.

Table of Response Resources

Equipment	Sub-Type	Size	Unit	QTY	Unit	Last Page Update
Boom	Harbor	9x9 inch		500	feet	
Boom	Sorbent			500	feet	
Anchor	Danforth	25 lb		4		
Vessel	Skiff or Punt			1		
Staff	Staff to Deploy			3		

Logistics:

Directions: Key access to site is by boat accessible from Stockton Deep Water Channel at marker G 41. Levee road are accessible on east and west from surface streets off of I-5. (March Ln exit, south to Brookside to levee access.)

Land Access: Access site from levee roads. Contact DWR of RD for any gate access issues.

On-Water Limitations: Shallow and shallower, snags. Boat launch, fuel, and other marina facilities are available at Stockton Port and other marinas up and down channel.

Facilities, Staging Areas, Command Posts, Available Equipment: Northwest levee road is a ready deployment site with good access. South levee area may work well too after gaining cooperation of homeowners. Otherwise transport material by skiff. Support facilities are widely available in Stockton area. There is a nearby waterfront park.

Communications Problems: Good cell reception.



County: San Joaquin ACP Division/Segment:

NOAA Chart: 18661 SACRAMENTO / Map Book: SF Bay and Delta Decimal Degrees: 37.962469 -121.374053
 SAN JOAQUIN RIVER

Site Description:

From mouth on Stockton Deep Water Channel (at R 42 opposite Calaveras River mouth), encompassing Rough and Ready Island, approx 5 linear river miles to mouth on San Joaquin River about 1 mile south of Port of Stockton. It is bordered by Rough & Ready Island on its NE shoreline. A narrow, shallow water slough with margin varying from heavily rip-rapped, revegetated levees to emergent freshwater marsh vegetation and mature trees. Snags and shallows are common this medium energy slough. Several small marshes have developed in the slow bends of the slough in the westerly half.

Resources at Risk:

- ESI and Habitat: 8C Sheltered riprap
- 8B Sheltered solid man-made structures
- 9B Vegetated low banks

List of Resources at Risk:

	Resource Name	Status	Presence	Sensitivity
Birds	tri-colored blackbirds	FP, SSC		Mar-Apr
Fish	delta smelt	FT, SE		Mar-May
Fish	chinook salmon - Winter-run	FE, SE		Oct-May
Fish	longfin smelt	ST		Nov-May
Fish	steelhead - Central/Northern California	FT		Nov-Apr
Plants	Delta tule pea	SSSP		May-Jul
Reptiles	giant garter snake	FT, ST		Jul-Oct

FT-Federally Threatened, FE-Federally Endangered, FP-Federally Protected, SE-State Endangered, ST-State Threatened, SP -State Protected, SR-State Rare, SSC-Species of Special Concern, BGEPA-Bald and Golden Eagle Protection Act, SSSP-State Special Status Species

List of Key Contacts:

Type	Name/Title	Organization	Phone
C	/Coordinator	Native American Heritage Commission	(916) 373-3710
C	/Coordinator	Northwest Information Center	(707) 588-8455
E	/Manager	Central Delta Water Agency	(209) 969-7755
E	/Engineer	Terminus Tract Reclamation District	(209) 649-4555
E	/Engineer	Terminus Tract Reclamation District	(209) 465-5883
O	/Dispatch, 24-hr	California Department of Water Resources	(916) 574-2714
S	/Dispatch, 24-hr	San Joaquin Office of Emergency Services	(209) 953-6200
T	/Environmental Program Manager	CA Dept. of Fish & Wildlife, Bay Delta Region	(707) 576-2837
T	/Restoration Ecologist	US Department of Agriculture	(530) 304-2304
T	/Spill Response Coordinator	USFWS, SF Bay-Delta Office	(916) 799-0588

C – Cultural, Historic, Archaeological; E – Entry/Owner/Access; O – Other; S – Safety; T – Trustee; X – Exclusion or Security

Additional Site Summary Comments:

Do not anchor boom to trees on the levees.

Concerns and Advice to Responders:

Concern is to exclude oil from entering this channel and contaminating additional habitat. Within the site the concerns are penetration into marsh areas, riprap, and animal and invertebrate burrows in levees, islands and uplands.

Hazard and Restrictions:

Aerial traffic beware of powerlines. Regarding boat handling, beware of underground pipe crossing, shallows, snags and mud bars.

Site Strategies:**Site Validation Level: II**

Strategy: 2-018.1 Objective: Exclude/Contain boom at San Joaquin River (upstream) east end.

Strategy: Set boom across slough mouth. Anchor one boom end near downstream riprap bank. Anchor upstream boom end upriver past forested tip and to shore across mud shallows, leaving a trailing boom length to maintain seal during tidal vacillations. If spill is in slough, skim at riprap closure. Back with sorbent. Land-based deployment.

Table of Response Resources

Equipment	Sub-Type	Size	Unit	QTY	Unit	Last Page Update
Boom	Swamp	6x6 inch		200	feet	
Boom	Sorbent			200	feet	
Anchor	Danforth	22 lb		3		
Vessel	Skiff or Punt			1		
Staff	Staff to Deploy			3		

Strategy: 2-018.2 Objective: Exclude/Contain boom at mouth on Deep Water Channel (downstream/east end)

Strategy: Anchor boom across from just inside of mouth on Rough and Ready across to opposite shore (Roberts Island). Leave trailing boom ends to promote sealing during tidal flux. Back with sorbent boom. Skimming collection on west side.

Table of Response Resources

Equipment	Sub-Type	Size	Unit	QTY	Unit	Last Page Update
Boom	Swamp	6x6 inch		100	feet	
Boom	Sorbent			100	feet	
Anchor	Danforth	22 lb		2		
Vessel	Skiff or Punt			1		
Staff	Staff to Deploy			3		

Logistics:

Directions: Key access to site is from southerly side via I-5 to Hwy 4 to Private levee roads (from Hwy 4 and Roberts Island Road. Also access via Navy property (USN ROUGH & READY ISLAND). I-5 to Charter Way to Rough & Ready Naval Station (Rough & Ready Island access only by approval of USN). By boat accessible from SJ Deep Water Channel to south from marker R42 or from S J R end 1 mile S of Port.

Land Access: Access from levees when dry, stay when levees saturated.

On-Water Limitations: Stockton harbor area marina facilities have all services.

Facilities, Staging Areas, Command Posts, Available Equipment: With Navy approval Rough and Ready Island is a secure deployment site. Adjacent levees should be adequate as long as roads are passable. Otherwise transport material by skiff.

Communications Problems: Good cell reception.



County: San Joaquin ACP Division/Segment:

NOAA Chart: 18661 SACRAMENTO / Map Book: SF Bay and Delta Decimal Degrees: 37.948892 -121.336364
 SAN JOAQUIN RIVER

Site Description:

Site is from intersection of San Joaquin River and Deep Water Channel at the Port of Stockton (R 48) up river 17 miles to I-5 at Mossdale. This channel is relatively narrow and occasionally winding. It is bordered with heavily rip-rapped levees, but there are occasional pockets of natural mature riparian vegetation and occasional freshwater marshes.

Resources at Risk:

- ESI and Habitat: 8C Sheltered riprap
- 8B Sheltered solid man-made structures
- 9B Vegetated low banks

List of Resources at Risk:

	Resource Name	Status	Presence	Sensitivity
Birds	tri-colored blackbirds	FP, SSC		Mar-Apr
Birds	Swainson's hawk	FP, ST		Mar-Sep
Fish	delta smelt	FT, SE		Mar-May
Fish	steelhead - Central/Northern California	FT		Nov-Apr
Reptiles	giant garter snake	FT, ST		Jul-Oct

FT-Federally Threatened, FE-Federally Endangered, FP-Federally Protected, SE-State Endangered, ST-State Threatened, SP -State Protected, SR-State Rare, SSC-Species of Special Concern, BGEPA-Bald and Golden Eagle Protection Act, SSSP-State Special Status Species

List of Key Contacts:

Type	Name/Title	Organization	Phone
C	/Coordinator	Native American Heritage Commission	(916) 373-3710
C	/Coordinator	Northwest Information Center	(707) 588-8455
E	/Manager	Central Delta Water Agency	(209) 969-7755
E	/Office	South Delta Water Agency	(209) 224-5854
E	/Engineer	Terminus Tract Reclamation District	(209) 649-4555
E	/Engineer	Terminus Tract Reclamation District	(209) 465-5883
O	/Dispatch, 24-hr	California Department of Water Resources	(916) 574-2714
S	/Dispatch, 24-hr	San Joaquin Office of Emergency Services	(209) 953-6200
T	/Environmental Program Manager	CA Dept. of Fish & Wildlife, Bay Delta Region	(707) 576-2837
T	/Restoration Ecologist	US Department of Agriculture	(530) 304-2304
T	/Spill Response Coordinator	USFWS, SF Bay-Delta Office	(916) 799-0588

C – Cultural, Historic, Archaeological; E – Entry/Owner/Access; O – Other; S – Safety; T – Trustee; X – Exclusion or Security

Additional Site Summary Comments:

Concerns and Advice to Responders:

Prime concern is to prevent oil from entering the river from the shipping channel. Once oil is in this long river reach, there is concern for toxicity to fish in the river and oiling of shrub and marsh growths and, secondarily, oil getting into riprap and animal burrows. If oil originates in the reach, try to confine it to the main channel and collect it with shore side collection and skimming.

Hazard and Restrictions:

Beware of ship traffic and wharf equipment operations at mouth. Aerial traffic beware of power wires. Note pipeline crossings under SJR just upstream from Harbor. River has many shallows, snags and pilings.

Site Strategies:**Site Validation Level: II**

Strategy: 2-020.1 Objective: Divert/Exclude/Contain/Collect boom at mouth of San Joaquin at Stockton Harbor entrance (SAME AS 2-010.2 Stockton Harbor).

Strategy: Set 6X6+ Swamp boom from dolphin southwest of Wharf 9 diagonally across river mouth to channel side of Rough and Ready Island. Anchor to keep a long diagonal downstream. Collect oil in San Joaquin from eddy at tip of Rough and Ready Island and oil from harbor from east side land sites near dolphin. (This is the same as 2-010.2 Stockton Harbor.). Use 50ft of Oil Snare (OS), 100ft of sorbent boom to collect oil that may accumulate. Contact IC if oil accumulates in skimmable quantities.

Table of Response Resources

Equipment	Sub-Type	Size	Unit	QTY	Unit	Last Page Update
Boom	Swamp	6x6 feet		400		
Boom	Oil Snare (pom-pom)		feet	50		
Boom	Sorbent		feet	700		
Anchor	Danforth		22 lb	5		
Vessel	Skiff			1		
Staff	Staff to Deploy			5		

Strategy: 2-020.2 Objective: diversion to shore collection and protective boom for marshy/riparian exposures.

Strategy: As opportunity permits, set 6X6 Sboom across river at a diagonal to drive oil to shore for collection. Protect marsh and emergent vegetation with sorbent boom as necessary. Use 50ft of Oil Snare (OS), 100ft of sorbent boom to collect oil that may accumulate. Contact IC if oil accumulates in skimmable quantities.

Table of Response Resources

Equipment	Sub-Type	Size	Unit	QTY	Unit	Last Page Update
Boom	Swamp	6x6 inch		400	feet	
Boom	Oil Snare (pom-pom)			50	feet	
Boom	Sorbent			700	feet	
Anchor	Danforth		22 lb	5		
Vessel	Skiff or Punt			1		
Staff	Staff to Deploy			3		

Strategy: 2-020.3 Objective: Oil Recovery by skimming

Strategy: Deploy skimmers when oil accumulates in skimmable quantities. Consult with IC prior to the initiation of this strategy.

Table of Response Resources

Equipment	Sub-Type	Size	Unit	QTY	Unit	Last Page Update
skimmer	self propelled			1		
Staff	Staff to Deploy			3		

Logistics:

Directions: Key access to site is by boat accessible from marinas within and just downstream from Stockton Harbor. Levee and wharves at mouth are accessible via surface streets off of I-5 exits north and south of harbor. Along the remainder of the site are levee roads accessible from Roberts Island via Hwy 4.

Land Access: Access good from levees. Stay off levees when saturated.

On-Water Limitations: Stockton harbor area marina facilities.

Facilities, Staging Areas, Command Posts, Available Equipment: South wharves (or north levee road) is a ready deployment site with good access at mouth. Otherwise few facilities once you leave the Port area: unload from levee and/or transport material by skiff.

Communications Problems: Good cell reception.



2-021-A Site Summary - French Camp Slough**2-021-A****County:** San Joaquin **ACP Division/Segment:****NOAA Chart:** 18661 SACRAMENTO / **Map Book:** SF Bay and Delta **Decimal Degrees:** 37.920155 -121.318609
SAN JOAQUIN RIVER**Site Description:**

A six mile+ dead-end slough extending from the mouth on the San Joaquin River easterly with main stem and branch, Walker Slough, to I-5. Both branches extend well east of I-5. Habitat varies from rip-rapped shorelines and revegetated levees to pockets of mature riparian growth and occasional berm islands. Snags, marsh/riparian margins and shallows are common in this low energy slough. It has a 2 mile branch, Walker Slough. Approx 3 of the 6+ slough miles are west of I-5.

Resources at Risk:

ESI and Habitat: 8C Sheltered riprap
9B Vegetated low banks
8B Sheltered solid man-made structures

List of Resources at Risk:

	Resource Name	Status	Presence	Sensitivity
Birds	Swainson's hawk	FP, ST		Mar-Sep
Birds	tri-colored blackbirds	FP, SSC		Mar-Apr
Fish	delta smelt	FT, SE		Mar-May
Fish	steelhead - Central/Northern California	FT		Nov-Apr
Reptiles	giant garter snake	FT, ST		Jul-Oct

FT-Federally Threatened, FE-Federally Endangered, FP-Federally Protected, SE-State Endangered, ST-State Threatened, SP -State Protected, SR-State Rare, SSC-Species of Special Concern, BGEPA-Bald and Golden Eagle Protection Act, SSSP-State Special Status Species

List of Key Contacts:

Type	Name/Title	Organization	Phone
C	/Coordinator	Native American Heritage Commission	(916) 373-3710
C	/Coordinator	Northwest Information Center	(707) 588-8455
E	/Manager	Central Delta Water Agency	(209) 969-7755
E	/Office	South Delta Water Agency	(209) 224-5854
E	/Engineer	Terminus Tract Reclamation District	(209) 649-4555
E	/Engineer	Terminus Tract Reclamation District	(209) 465-5883
O	/Dispatch, 24-hr	California Department of Water Resources	(916) 574-2714
S	/Dispatch, 24-hr	San Joaquin Office of Emergency Services	(209) 953-6200
T	/Environmental Program Manager	CA Dept. of Fish & Wildlife, Bay Delta Region	(707) 576-2837
T	/Restoration Ecologist	US Department of Agriculture	(530) 304-2304
T	/Spill Response Coordinator	USFWS, SF Bay-Delta Office	(916) 799-0588

C – Cultural, Historic, Archaeological; E – Entry/Owner/Access; O – Other; S – Safety; T – Trustee; X – Exclusion or Security

Additional Site Summary Comments:

Beware of submerged obstacles and snags.

Concerns and Advice to Responders:

Penetration into marsh, riprap, and animal and invertebrate burrows in levees, islands and uplands. Vegetation cleaning problems.

Hazard and Restrictions:

Slips, trips and falls on riprap and steep levees. Regarding boat handling, beware of shallows, snags and mud bars. Poison Oak.

Site Strategies:**Site Validation Level: II**

Strategy: 2-021.1 Objective: Exclusion/Containment booming at mouth to prevent entering or leaving the slough mouth: Stop oil entry on incoming tide or oil escapement if originating within slough.

Strategy: Set 500' of swamp boom across slough mouth. Anchor one boom end near downstream riprap bank. Anchor upstream boom end to forested tip, leaving a trailing boom length to maintain seal during tidal vacillations. Skim at riprap closure if spill is in slough.

Table of Response Resources

Equipment	Sub-Type	Size	Unit	QTY	Unit	Last Page Update
Boom	Swamp	6x6 inch		500	feet	
Boom	Sorbent			500	feet	
Anchor	Danforth	25 lb		5		
Vessel	Skiff or Punt			1		
Staff	Staff to Deploy			3		

Strategy: 2-021.2 Objective: Deflection to collection away from slough to opposite side of San Joaquin River when oil is coming down-river from upstream.

Strategy: Anchor 300' Sboom diagonally upstream 100'+ from mouth diagonally downstream and across the San Joaquin River to west side riprap levee (shallows). Skimming (Shore-Side Skimming) collection on west side. Be prepared to close mouth with additional boom if oil escapes. A backup deployment with equal equipment may be necessary. Use 50ft of Oil Snare (OS), 100ft of sorbent boom to collect any oil that may accumulate. Contact IC if oil accumulates in skimmable quantities.

Table of Response Resources

Equipment	Sub-Type	Size	Unit	QTY	Unit	Last Page Update
Boom	Swamp	6x6 inch		300	feet	
Boom	Oil Snare (pom-pom)			50	feet	
Boom	Sorbent			300	feet	
Anchor	Danforth	25 lb		5		
Vessel	Skiff or Punt			1		
Staff	Staff to Deploy			3		

Strategy: 2-021.3 Objective: Oil Recovery by skimming

Strategy: Deploy skimmer if oil accumulates in skimmable quantities. Consult with IC prior to initiating this strategy.

Table of Response Resources

Equipment	Sub-Type	Size	Unit	QTY	Unit	Last Page Update
skimmer	shoreside			1		
Staff	Staff to Deploy			3		

Logistics:

Directions: Levee roads border this site on north south and west. North & east levees can be reached via I-5 to Charter Way/Hwy 4 to levee via water 2 miles south of Stockton Port on the San Joaquin River.

Land Access: Good access from levees. Stay off levees when saturated unless paved.

On-Water Limitations: Shallow and shallower, submerged snags. Stockton harbor area marina facilities.

2-021-A Site Strategy - French Camp Slough

2-021-A

Facilities, Staging Areas, Command Posts, Available Equipment: Adjacent levees should be adequate as long as roads are passable. Otherwise transport material by skiff (2 miles).

Communications Problems: Good cell reception in area.



County: San Joaquin **ACP Division/Segment:****NOAA Chart:** 18661 SACRAMENTO / **Map Book:** SF Bay and Delta **Decimal Degrees:** 37.995357 -121.421398
SAN JOAQUIN RIVER**Site Description:**

Site is from intersection of San Joaquin River and Deep Water Channel at the Port of Stockton (R 48) to Turner Cut at Aker Island, and includes Walters Island. Adjacent sites are Calaveras River, Burns cutoff, and Fourteenmile Slough. This section of the Stockton Deep Water Channel is heavily rip-rapped and modified. Some mature trees and pockets of emergent vegetation line the edges. Walters Island remains in a more natural condition with emergent marsh and riparian shrub scrub.

Resources at Risk:*ESI and Habitat:* 8C Sheltered riprap

9B Vegetated low banks

8B Sheltered solid man-made structures

List of Resources at Risk:

	Resource Name	Status	Presence	Sensitivity
Birds	Swainson's hawk	FP, ST		Mar-Sep
Birds	burrowing owl	SSC		Mar-Apr
Fish	delta smelt	FT, SE		Mar-May
Fish	longfin smelt	ST		Nov-May
Fish	steelhead - Central/Northern California	FT		Nov-Apr
Plants	Mason's lilaeopsis	SR		Apr-Nov
Reptiles	giant garter snake	FT, ST		Jul-Oct

FT-Federally Threatened, FE-Federally Endangered, FP-Federally Protected, SE-State Endangered, ST-State Threatened, SP -State Protected, SR-State Rare, SSC-Species of Special Concern, BGEPA-Bald and Golden Eagle Protection Act, SSSP-State Special Status Species

List of Key Contacts:

Type	Name/Title	Organization	Phone
C	/Coordinator	Native American Heritage Commission	(916) 373-3710
C	/Coordinator	Northwest Information Center	(707) 588-8455
E	/Manager	Central Delta Water Agency	(209) 969-7755
E	/Office	Mandeville Island Reclamation District	(209) 946-0268
E	/Engineer	Terminus Tract Reclamation District	(209) 649-4555
E	/Engineer	Terminus Tract Reclamation District	(209) 465-5883
E	/Office	Webb Tract Reclamation District	(209) 943-5551
O	/Dispatch, 24-hr	California Department of Water Resources	(916) 574-2714
S	/Dispatch, 24-hr	San Joaquin Office of Emergency Services	(209) 953-6200
T	/Environmental Program Manager	CA Dept. of Fish & Wildlife, Bay Delta Region	(707) 576-2837
T	/Restoration Ecologist	US Department of Agriculture	(530) 304-2304
T	/Spill Response Coordinator	USFWS, SF Bay-Delta Office	(916) 799-0588

C – Cultural, Historic, Archaeological; E – Entry/Owner/Access; O – Other; S – Safety; T – Trustee; X – Exclusion or Security

Additional Site Summary Comments:

Beware of submerged obstacles such as old pier pilings and snags.

Concerns and Advice to Responders:

Oil issues are penetration and cleanup of marsh vegetation, riprap, pilings and collection behind seawalls and under wharves.

Hazard and Restrictions:

Waters are deep draft except in margins and side channels of SJ River. Aerial traffic beware of powerlines.

Site Strategies:**Site Validation Level: II**

Strategy: 2-030.1 Objective: Diversion/Collection/exclusion/containment boom to halt oil movement in Stockton Channel

Strategy: Set 1200' 9x9+ Hboom in a long diagonal boom across the Stockton Deep Water Channel from light G27 to natural collection point on Roberts Island (best access). Depending on prevailing conditions and oil movement Rindge Tract may be alternate collection site. Use 50ft of Oil Snare (OS), 100 ft of sorbent boom to collect any oil that may accumulate.

Table of Response Resources

Equipment	Sub-Type	Size	Unit	QTY	Unit	Last Page Update
Boom	Harbor	9x9 inch		1200	feet	
Boom	Oil Snare (pom-pom)			50	feet	
Boom	Sorbent			100	feet	
Anchor	Danforth	25 lb		6		
Vessel	Boom Boat			1		
Vessel	Skiff or Punt			1		

Strategy: 2-030.2 Objective: Exclusion/protection booming of openings and marshy margins Walters Island to keeping oil from backside channel and cover Deep Water frontage with sorbent.

Strategy: Set two exclusion booms. One at each end of Island. 800 ft at east end and 1200 at west across backside slough opening. Anchor near riprap levee and with long Island overlap on Channel side. Leave a trailing boom length to maintain seal during tidal vacillations. Put sorbent across remainder of exposed channel side. Wind wash/fetch can be a problem here.

Table of Response Resources

Equipment	Sub-Type	Size	Unit	QTY	Unit	Last Page Update
Boom	Harbor	9x9 inch		2000	feet	
Boom	Sorbent			3000	feet	
Anchor	Danforth	25 lb		7		
Vessel	Boom Boat			1		
Vessel	Skiff or Punt			1		
Staff	Staff to Deploy			5		

Strategy: 2-030.3 Objective: Oil Recovery by skimming

Strategy: Deploy skimmer if oil accumulates in skimmable quantities. Consult with IC prior to initiating this strategy.

Table of Response Resources

Equipment	Sub-Type	Size	Unit	QTY	Unit	Last Page Update
skimmer	shoreside			1		
Staff	Staff to Deploy			3		

Logistics:

Directions: Key access to site by boat accessible is from Windmill Cove Marina and marinas at Stockton Harbor. Excellent access from Roberts Island (to south) from Hwy 4. Also access from private levee roads on Rindge Tract and Wright Tract from I-5 via 8-mile Road and March Lane.

Land Access: Access from levees when dry, stay off levees when saturated.

2-030-A Site Strategy - San Joaquin River, Roberts Island Reach

2-030-A

On-Water Limitations: A full range of marine facilities are at Stockton harbor. Windmill Cove Resort on Roberts Island on south side of site has fuel, launch and docks.

Facilities, Staging Areas, Command Posts, Available Equipment: Good major deployment site on Roberts Island at light R 32 (mouth of Turner Cut): Dock and crane available. Deployment from near side Rindge Tract levee is also possible.

Communications Problems: Good cell reception.



County: San Joaquin **ACP Division/Segment:****NOAA Chart:** 18661 SACRAMENTO / **Map Book:** SF Bay and Delta **Decimal Degrees:** 37.995234 -121.410839
SAN JOAQUIN RIVER**Site Description:**

From Morrison Island (at G 31 & 33) on the Stockton Deep Water Channel, the site extends 4 miles northeasterly to a split. One channel continues east and south 6 miles to I-5, the other northerly 6 miles to junction with Disappointment Slough. The Slough is laced with channels between natural marsh berms and channel islands including Morrison Island at the mouth. Levee banks are rip-rapped and pocketed with emergent freshwater marsh and riparian growth.

Resources at Risk:

ESI and Habitat: 8C Sheltered riprap
9B Vegetated low banks
8C Sheltered riprap

List of Resources at Risk:

	Resource Name	Status	Presence	Sensitivity
Birds	California black rail	FP, ST		Mar-Aug
Fish	steelhead - Central/Northern California	FT		Nov-Apr
Fish	delta smelt	FT, SE		Mar-May
Plants	Mason's lilaeopsis	SR		Apr-Nov
Reptiles	qiant qarter snake	FT, ST		Jul-Oct

FT-Federally Threatened, FE-Federally Endangered, FP-Federally Protected, SE-State Endangered, ST-State Threatened, SP -State Protected, SR-State Rare, SSC-Species of Special Concern, BGEPA-Bald and Golden Eagle Protection Act, SSSP-State Special Status Species

List of Key Contacts:

Type	Name/Title	Organization	Phone
C	/Coordinator	Native American Heritage Commission	(916) 373-3710
C	/Coordinator	Northwest Information Center	(707) 588-8455
E	/Manager	Central Delta Water Agency	(209) 969-7755
E	/Office	Mandeville Island Reclamation District	(209) 946-0268
E	/Office	Webb Tract Reclamation District	(209) 943-5551
O	/Dispatch, 24-hr	California Department of Water Resources	(916) 574-2714
S	/Dispatch, 24-hr	San Joaquin Office of Emergency Services	(209) 953-6200
T	/Environmental Program Manager	CA Dept. of Fish & Wildlife, Bay Delta Region	(707) 576-2837
T	/Office	US Bureau of Land Management	(916) 683-1740
T	/Restoration Ecologist	US Department of Agriculture	(530) 304-2304
T	/Spill Response Coordinator	USFWS, SF Bay-Delta Office	(916) 799-0588

C – Cultural, Historic, Archaeological; E – Entry/Owner/Access; O – Other; S – Safety; T – Trustee; X – Exclusion or Security

Additional Site Summary Comments:

Several sensitive plant species occur in the area.

Concerns and Advice to Responders:

Concern is to stop oil from moving from the channels to the many freshwater marsh islands in Fourteenmile Slough, because this would permit oil penetration into marsh areas, woody cover, riprap, and animal and invertebrate burrows in levees, islands and uplands. Cleanup will be very difficult with severe impacts.

Hazard and Restrictions:

Aerial traffic beware of powerlines. Dense Poison Oak. Slips trips and falls on levee riprap.

Site Strategies:**Site Validation Level: II**

Strategy: 2-033.1 Objective: Exclusion/containment boom of mouth at each end of Morrison Island (at lights G33 & G31)

Strategy: At EAST END of Morrison Island, set boom across east slough mouth. Anchor one boom end near upstream riprap levee. Anchor other end to Morrison Island near channel marker G 33. Back with sorbent, leaving a trailing boom length for a tidal seal. Wind wash can be a problem here. At WEST END of Morrison Island, anchor one end of 9x9+ Hboom at Rindge Tract levee and other lapping well onto Stockton Channel face well up from Morrison Island tip. Leave trailing boom ends for tidal seal.

Table of Response Resources

Equipment	Sub-Type	Size	Unit	QTY	Unit	Last Page Update
Boom	Harbor	9x9 inch		1100	feet	
Boom	Sorbent			500	feet	
Anchor	Danforth	22 lb		5		
Vessel	Boom Boat			1		
Vessel	Skiff or Punt			1		
Staff	Staff to Deploy			5		

Strategy: 2-033.2 Objective: Protection boom and sorbants of emergent vegetation on Morrison Island.

Strategy: Place sorbent boom around patches of emergent vegetation along the sandy beaches on the channel side of Morrison Island.

Table of Response Resources

Equipment	Sub-Type	Size	Unit	QTY	Unit	Last Page Update
Boom	Sorbent			500	feet	
Anchor	Stakes			11		
Vessel	Skiff or Punt			1		
Staff	Staff to Deploy			2		

Logistics:

Directions: Key access to site is by boat accessible from Stockton Deep Water Channel at markers G 31 and 33. Private levee roads are accessible on west (Rindge tract) via I-5 to 8-mile Road to Rio Blanco Rd and east from surface streets off of I-5 (March Lane exit, SW to Brookside to levee).

Land Access: Access from levees when dry, avoid driving on levees when saturated.

On-Water Limitations: Boat launch and rental boats just across channel at Windmill Cove Resort. Stockton harbor has all manner of marina facilities.

Facilities, Staging Areas, Command Posts, Available Equipment: Deployment possible from nearby levees. Also from Windmill Cove Resort. Consider using the tip of Roberts Island at Turner Cut/Acker Island as a major deployment site for this section of the Channel. Stockton Port has all manner of support facilities.

Communications Problems: Cell reception good in area.



County: San Joaquin **ACP Division/Segment:****NOAA Chart:** 18661 SACRAMENTO / **Map Book:** SF Bay and Delta **Decimal Degrees:** 38.004958 -121.452289
SAN JOAQUIN RIVER**Site Description:**

Site is an island complex along the Deep Water Channel from light R18 to light R24. These islands include Hog, Spud, Acker and many small channel and berm Islands. Though some parts of the islands are partially developed, most are in very natural states varying from freshwater marsh to shrub scrub to riparian. The channels bordering agricultural islands have heavily rip-rapped levees.

Resources at Risk:

ESI and Habitat: 8C Sheltered riprap
9B Vegetated low banks

List of Resources at Risk:

	Resource Name	Status	Presence	Sensitivity
Fish	delta smelt	FT, SE		Mar-May
Fish	longfin smelt	ST		Nov-May
Fish	steelhead - Central/Northern California	FT		Nov-Apr
Reptiles	giant garter snake	FT, ST		Mar-Sep

FT-Federally Threatened, FE-Federally Endangered, FP-Federally Protected, SE-State Endangered, ST-State Threatened, SP -State Protected, SR-State Rare, SSC-Species of Special Concern, BGEPA-Bald and Golden Eagle Protection Act, SSSP-State Special Status Species

List of Key Contacts:

Type	Name/Title	Organization	Phone
C	/Coordinator	Native American Heritage Commission	(916) 373-3710
C	/Coordinator	Northwest Information Center	(707) 588-8455
E	/Manager	Central Delta Water Agency	(209) 969-7755
E	/Engineer	Lower Roberts Island Reclamation District	(209) 649-4555
E	/Office	McDonald Island Reclamation District	(209) 956-9940
E	/Office	Rindge Tract Reclamation District	(209) 403-4018
E	/Office	Rindge Tract Reclamation District	(209) 956-8800
E	/Engineer	Terminus Tract Reclamation District	(209) 649-4555
E	/Engineer	Terminus Tract Reclamation District	(209) 465-5883
E	/Office	Webb Tract Reclamation District	(209) 943-5551
O	/Dispatch, 24-hr	California Department of Water Resources	(916) 574-2714
S	/Dispatch, 24-hr	San Joaquin Office of Emergency Services	(209) 953-6200
T	/Environmental Program Manager	CA Dept. of Fish & Wildlife, Bay Delta Region	(707) 576-2837
T	/Restoration Ecologist	US Department of Agriculture	(530) 304-2304
T	/Spill Response Coordinator	USFWS, SF Bay-Delta Office	(916) 799-0588

C – Cultural, Historic, Archaeological; E – Entry/Owner/Access; O – Other; S – Safety; T – Trustee; X – Exclusion or Security

Additional Site Summary Comments:

Several sensitive plant species occur in the area. Beware of submerged snags.

Concerns and Advice to Responders:

The major Concern here is to prevent/minimize oiling of marshes and vegetation of the many small islands here. The strategies are designed to close side channels, block oil movement, and direct oil to collection. and penetration into burrows and riprap. Responders should try to minimize trampling vegetation and trampling oil into sediments.

Hazard and Restrictions:

Waters are deep draft except in channel on backside of Hog Island. Aerial traffic beware of power wires.

Site Strategies:

Site Validation Level: II

Strategy: 2-040.1 Objective: NORTH SIDE: Exclude oil from backside of north Hog Island setting boom at each end of backside channel.

Strategy: Set two exclusion booms. One at each end of Island. 200 ft at east end and 600 at west across backside slough opening. 1000 ft from Hog to island to west and a second 1200 stretch from there to Rindge Tract levee. Sorbent or swamp boom west marsh of westerly island. Anchor near riprap levee leaving a trailing boom length to maintain seal during tidal vacillations. Possible skim at east end.

Table of Response Resources

Equipment	Sub-Type	Size	Unit	QTY	Unit	Last Page Update
Boom	Harbor	9x9 inch		3300	feet	
Boom	Sorbent			3000	feet	
Anchor	Danforth	25 lb		10		
Vessel	Boom Boat			1		
Vessel	Skiff or Punt			1		
Staff	Staff to Deploy			5		

Strategy: 2-040.2 Objective: SOUTH: Exclude oil from 21 Mile Slough (south margin of Spud Island) by booming each end.

Strategy: Set 600 ft of Hboom from Spud Island to Lost Island Resort. Set 1000 ft of boom from McDonald Island levee to west tip of Spud Island. Leave trailing ends to keep seal during tidal seal. Sorbent boom blocks across small channels admitting to interior marsh of Spud Island. Also execute Strategy (2-963) to exclude oil from Turner Cut.

Table of Response Resources

Equipment	Sub-Type	Size	Unit	QTY	Unit	Last Page Update
Boom	Harbor	9x9 inch		1600	feet	
Boom	Sorbent			200	feet	
Anchor	Danforth	25 lb		6		
Vessel	Boom Boat			1		
Vessel	Skiff or Punt			1		
Staff	Staff to Deploy			5		

Strategy: 2-040.3 Objective: WEST: Exclude/Divert/Collect boom, divert oil to levee bank for collection as wind and currents permit.

Strategy: Set 2000 ft of Hboom across channel at a long diagonal from opposite and upstream of light 18 to pocket eddy on south side of Channel. Set up collection at levee offering collection (typically the McDonald Island levee). Use 50ft of Oil Snare (OS), 100ft of sorbent boom to collect oil that may accumulate. Wind wave wash is a problem here.

Table of Response Resources

Equipment	Sub-Type	Size	Unit	QTY	Unit	Last Page Update
Boom	Harbor	9x9 inch		2000	feet	
Boom	Oil Snare (pom-pom)			50	feet	
Boom	Sorbent			100	feet	
Anchor	Danforth	40 lb		8		
Vessel	Boom Boat			1		
Vessel	Skiff or Punt			1		
Staff	Staff to Deploy			5		

Strategy: 2-040.4 Objective: Oil Recovery by skimming

Strategy: Deploy skimmer if oil accumulates in skimmable quantities. Get authorization from IC prior to the initiation of this strategy.

Table of Response Resources

Equipment	Sub-Type	Size	Unit	QTY	Unit	Last Page Update
skimmer	shoreside			1		
Staff	Staff to Deploy			3		

Logistics:

Directions: Key access to site (lights R18- R24) is by boat accessible from Windmill Cove Marina and or other central & east delta marinas. Vehicle access from Roberts Island (to south) from Hwy 4. Also access from private levee roads on Rindge Tract from I-5 via 8-mile Road.

Land Access: Avoid levees when saturated unless they are paved.

On-Water Limitations: Windmill Cove Resort on Roberts Island on south side of site. Stockton harbor area marina facilities.

Facilities, Staging Areas, Command Posts, Available Equipment: Good staging site on Roberts Island to southeast at light R 32. Deployment from near side Rindge Tract and McDonald Island levees is also possible.

Communications Problems: Cell reception varies.



2-045-A Site Summary - Disappointment Slough**2-045-A****County:** San Joaquin **ACP Division/Segment:****NOAA Chart:** 18661 SACRAMENTO / **Map Book:** SF Bay and Delta **Decimal Degrees:** 38.039418 -121.48128
SAN JOAQUIN RIVER**Site Description:**

This site extends about 7 miles from its mouth behind north Fern Island (north of Ward Cut) easterly to I-5, and includes the side channels Honker and Bishop Cuts. Throughout its length, it is laced with cross channels between its many marsh berm and channel islands. These islands are ecologically rich and covered with shrub-scrub and emergent vegetation. At the upper end near I-5 are several acres of mature riparian growth. Levee banks are rip-rapped with pockets of emergent freshwater marsh & riparian growth.

Resources at Risk:*ESI and Habitat:* 6B Riprap

9B Vegetated low banks

List of Resources at Risk:

	Resource Name	Status	Presence	Sensitivity
Birds	Swainson's hawk	FP, ST		Mar-Sep
Birds	California black rail	FP, ST		Mar-Aug
Fish	chinook salmon - Winter-run	FE, SE		Oct-May
Fish	steelhead - Central/Northern California	FT		Nov-Apr
Fish	delta smelt	FT, SE		Mar-May
Plants	Mason's lilaeopsis	SR		Apr-Nov
Reptiles	giant garter snake	FT, ST		Jul-Oct

FT-Federally Threatened, FE-Federally Endangered, FP-Federally Protected, SE-State Endangered, ST-State Threatened, SP -State Protected, SR-State Rare, SSC-Species of Special Concern, BGEPA-Bald and Golden Eagle Protection Act, SSSP-State Special Status Species

List of Key Contacts:

Type	Name/Title	Organization	Phone
C	/Coordinator	Native American Heritage Commission	(916) 373-3710
C	/Coordinator	Northwest Information Center	(707) 588-8455
E	/Manager	Central Delta Water Agency	(209) 969-7755
O	/Dispatch, 24-hr	California Department of Water Resources	(916) 574-2714
S	/Dispatch, 24-hr	San Joaquin Office of Emergency Services	(209) 953-6200
T	/Environmental Program Manager	CA Dept. of Fish & Wildlife, Bay Delta Region	(707) 576-2837
T	/Restoration Ecologist	US Department of Agriculture	(530) 304-2304
T	/Spill Response Coordinator	USFWS, SF Bay-Delta Office	(916) 799-0588

C – Cultural, Historic, Archaeological; E – Entry/Owner/Access; O – Other; S – Safety; T – Trustee; X – Exclusion or Security

Additional Site Summary Comments:

Several sensitive plant species occur in the area.

Concerns and Advice to Responders:

Concern here is the protecting the many marsh channel islands and sensitive plants found there from oiling. The strategies are designed to keep oil from entering this channel by exclusion/collection booming. Responders should beware that sensitive plants are common here, and should avoid trampling vegetation. Also avoid trampling oil into sediments.

Hazard and Restrictions:

Aerial traffic beware of powerlines. Dense Poison Oak. Slips trips and falls on levee riprap. Beware of shallows and snags in side channels.

Site Strategies:**Site Validation Level: III**

Strategy: 2-045.1 Objective: Exclude/Contain booming the slough mouth near the Ship Channel at west end

Strategy: Set harbor boom across channels at slough mouth. Anchor one boom end near west side riprap levee (Empire Tract) 800 ft across the slough on an upstream diagonal to the tip of Fern Island. Anchor a second boom length from Fern Island to mid-channel berm island and then on to the tip of Rindge Tract (500ft). Leave trailing boom lengths for a tidal seal. Back with sorbent boom.

Table of Response Resources

Equipment	Sub-Type	Size	Unit	QTY	Unit	Last Page Update
Boom	Harbor	9x9 inch		1300	feet	<i>Strategy Updated: 4/20/2017</i>
Boom	Sorbent			1500	feet	<i>Last Test: 4/20/2017</i>
Anchor	Danforth	25 lb		5		
Vessel	Boom Boat			1		
Vessel	Skiff or Punt			1		
Staff	Staff to Deploy			5		

Strategy: 2-045.2 Objective: Exclude/Contain booming at Honker Cut and Bishop Cut.

Strategy: Honker Cut: At the intersection of Honker Cut and Disappointment Slough anchor one end of 6X6+ swamp boom (200') at King Island levee and the other at Empire Tract, leaving trailing boom ends for tidal seal. This strategy can be deployed near 8 Mile Road if circumstances are favorable. Site may be appropriate for Shore-Side Skimming.

Bishop Cut: At the intersection of Bishop Cut and Disappointment Slough anchor one end of 4X4 boom (200) at Bishop Tract levee and the other at King Island leaving trailing boom ends for tidal seal. This strategy can be deployed nearer 8 Mile Road if circumstances are favorable. Site may be appropriate for Shore-Side Skimming.

Table of Response Resources

Equipment	Sub-Type	Size	Unit	QTY	Unit	Last Page Update
Boom	Swamp	6x6 inch		400	feet	
Anchor	Danforth	22 lb		3		
Vessel	Skiff or Punt			1		
Staff	Staff to Deploy			3		

Logistics:

Directions: Key access to deployment is by boat. Site is water accessible from Stockton Deep Water Channel north at G 14 and from marinas on adjacent islands. Key land access is from private levee roads Rindge and Empire Tracts via 8-mile Rd from I-5.

Land Access: Levee roads good unless saturated.

On-Water Limitations: Depth problems only near shore. Marina service and boat launch are available at Herman & Helen's at end of 8-mile Rd, Paradise Point Marina at Bishop Cut, and also at Honker Cut.

Facilities, Staging Areas, Command Posts, Available Equipment: Deployment possible from nearby levees. Also from nearby marinas consider using the end of 8-mile Rd as a major deployment site for this section of the Delta. Rental

2-045-A Site Strategy - Disappointment Slough

2-045-A

boats, restaurants, water, power, gas, marine repair and some camping is available at nearby marina/resorts.

Communications Problems: Cell reception varies.



County: San Joaquin **ACP Division/Segment:****NOAA Chart:** 18661 SACRAMENTO / **Map Book:** SF Bay and Delta **Decimal Degrees:** 38.027221 -121.472215
SAN JOAQUIN RIVER**Site Description:**

Site is an island complex along the Deep Water Channel from light R8 to light R16. These islands include Tinsley, Ward, Headreach, Fern, Little Venice Islands and many small unnamed channel and berm islands. Though some parts of the islands are partially developed, most are in very natural states varying from freshwater marsh to shrub scrub to riparian. The channels bordering agricultural islands have heavily riprapped levees.

Resources at Risk:*ESI and Habitat:* 6B Riprap

9B Vegetated low banks

10B Freshwater marshes

List of Resources at Risk:

	Resource Name	Status	Presence	Sensitivity
Birds	Swainson's hawk	FP, ST		Mar-Sep
Birds	California black rail	FP, ST		Mar-Aug
Fish	longfin smelt	ST		Nov-May
Fish	steelhead - Central/Northern California	FT		Nov-Apr
Fish	delta smelt	FT, SE		Mar-May
Plants	Mason's lilaeopsis	SR		Apr-Nov
Reptiles	giant garter snake	FT, ST		Jul-Oct

FT-Federally Threatened, FE-Federally Endangered, FP-Federally Protected, SE-State Endangered, ST-State Threatened, SP -State Protected, SR-State Rare, SSC-Species of Special Concern, BGEPA-Bald and Golden Eagle Protection Act, SSSP-State Special Status Species

List of Key Contacts:

Type	Name/Title	Organization	Phone
C	/Coordinator	Native American Heritage Commission	(916) 373-3710
C	/Coordinator	Northwest Information Center	(707) 588-8455
E	/Manager	Central Delta Water Agency	(209) 969-7755
E	/Office	Mandeville Island Reclamation District	(209) 946-0268
E	/Office	Rindge Tract Reclamation District	(209) 403-4018
E	/Office	Rindge Tract Reclamation District	(209) 956-8800
E	/Engineer	Terminus Tract Reclamation District	(209) 649-4555
E	/Engineer	Terminus Tract Reclamation District	(209) 465-5883
E	/Office	Tinsley Island Reclamation District	(209) 351-2222
E	/Office	Webb Tract Reclamation District	(209) 943-5551
O	/Dispatch, 24-hr	California Department of Water Resources	(916) 574-2714
S	/Dispatch, 24-hr	San Joaquin Office of Emergency Services	(209) 953-6200
T	/Environmental Program Manager	CA Dept. of Fish & Wildlife, Bay Delta Region	(707) 576-2837
T	/Spill Response Coordinator	USFWS, SF Bay-Delta Office	(916) 799-0588

C – Cultural, Historic, Archaeological; E – Entry/Owner/Access; O – Other; S – Safety; T – Trustee; X – Exclusion or Security

Additional Site Summary Comments:

Valley elderberry longhorn beetle habitat. Several sensitive plant species reside in the area.

Concerns and Advice to Responders:

The major oil issues here are oiling of vegetation and marshes and penetration into burrows and riprap.

Hazard and Restrictions:

Waters are deep draft except in narrow channels between islands, beware of snags and pilings in the shallows. Aerial traffic beware of power wires. Slips, trips and falls.

Site Strategies:

Site Validation Level: II

Strategy: 2-050.1 Objective: EAST End: Exclude/Divert/Collect boom (at light R16) and divert oil to shore for collection.

Strategy: Set 1300 ft of 9X9+ exclusion/diversion booms across the main channel at a diagonal. Deploy to favor collection of oil on the Rindge Tract shore if possible. Be prepared to execute secondary booming on the three channels at the east end if the primary boom is not adequate: 500' of 9x9+ boom from Rindge Tract levee to opposite isle tip on north side. Set a second 550' boom from McDonald Isle to Tule Isle. Anchor near shore leaving a trailing boom length to maintain seal during tidal changes. Back with sorbent. Shoreside skimming from Rindge Tract (or McDonald Isl). Use 50ft of Oil Snare (OS), 100ft of sorbent boom to collect oil that may accumulate. Contact IC if oil accumulates in skimmable quantities.

Table of Response Resources

Equipment	Sub-Type	Size	Unit	QTY	Unit	Last Page Update
Boom	Harbor	9x9 inch		2350	feet	
Boom	Oil Snare (pom-pom)			50	feet	
Boom	Sorbent			2100	feet	
Anchor	Danforth	25 lb		8		
Vessel	Boom Boat			1		
Vessel	Skiff or Punt			1		
Staff	Staff to Deploy			5		

Strategy: 2-050.2 Objective: WEST END: Exclude/Divert/Collect boom. Wind waves are typically a problem here.

Strategy: At R6 set 1200 ft of 9X9+ Hboom in a long diagonal to divert oil to shore for land-side collection. Favor land-based skim/collect oil at the Venice Isl levee if wind and oil movement permit. Anchor near shore leaving a trailing length for shore seal. Back with sorbent.

Table of Response Resources

Equipment	Sub-Type	Size	Unit	QTY	Unit	Last Page Update
Boom	Harbor	9x9 inch		1200	feet	
Boom	Sorbent			1200	feet	
Anchor	Danforth	25 lb		5		
Vessel	Boom Boat			1		
Vessel	Skiff or Punt			1		
Staff	Staff to Deploy			5		

Strategy: 2-050.3 Objective: Sorbent and exclusion boom included islands as necessary.

Strategy: Boom various sites, small sloughs, and marsh fronts as indicated in the strategy diagrams. Execute adjacent site strategies.

Table of Response Resources

Equipment	Sub-Type	Size	Unit	QTY	Unit	Last Page Update
Boom	Swamp	6x6 inch		4000	feet	
Boom	Sorbent			4000	feet	
Anchor	Danforth	25 lb		14		
Vessel	Boom Boat			1		
Vessel	Skiff or Punt			1		
Staff	Staff to Deploy			5		

Strategy: 2-050.4 Objective: Oil Recovery by skimming

Strategy: Deploy skimmer from Rindge Tract (or McDonald Isle) when oil accumulates in skimmable quantities. Get authorization from IC prior to the initiation of this strategy.

Table of Response Resources

Equipment	Sub-Type	Size	Unit	QTY	Unit	Last Page Update
skimmer	shoreside			1		
Staff	Staff to Deploy			3		

Logistics:

Directions: Key access to site (lights R8- R16) is by boat accessible from Herman & Helen's Marina or other central & east delta marinas. Vehicle access is from bordering levees: only Empire Tract is easily accessible via 8-mile Road from I-5.

Land Access: ROADS SEASONAL

On-Water Limitations: deep draft, except near shore. Nearest marine facilities, fuel and launch are at Herman & Hellens at the end of 8-mile Rd.

Facilities, Staging Areas, Command Posts, Available Equipment: Good deployment staging site at tip of Empire Tract on San Joaquin R. Facilities on Empire Tract include rental boats and houseboats, fuel, moorage, restaurant, electricity and water, marine supply and repair and some camping.

Communications Problems:



County: San Joaquin **ACP Division/Segment:****NOAA Chart:** 18661 SACRAMENTO / **Map Book:** SF Bay and Delta **Decimal Degrees:** 38.055945 -121.533675
SAN JOAQUIN RIVER**Site Description:**

Site is island tips separated from main islands by construction of the Deep Water Channel from light R6 to light R58. These include Mandeville Tip and Venice Tip and the many small unnamed channel and berm islands and surrounding channels. In addition to the very rich natural habitat varying from marsh to shrub scrub to riparian, there is a heron rookery here. These triangular shaped tips were once part of adjacent islands but are now flooded to varying degrees and partially enclosed with historic levees. Each have marshy margins both inside and out and small associated islands. The portions facing the channel are not leveed. The neighboring agricultural islands have heavily rip-rapped levees.

Resources at Risk:*ESI and Habitat:* 6B Riprap

9B Vegetated low banks

List of Resources at Risk:

	Resource Name	Status	Presence	Sensitivity
Birds	California black rail	FP, ST		Mar-Aug
Birds	Swainson's hawk	FP, ST		Mar-Sep
Birds	great blue heron	FP		Nov-Apr
Fish	delta smelt	FT, SE		Mar-May
Fish	steelhead - Central/Northern California	FT		Nov-Apr
Fish	longfin smelt	ST		Nov-May
Plants	Mason's lilaeopsis	SR		Apr-Nov
Reptiles	giant garter snake	FT, ST		Jul-Oct

FT-Federally Threatened, FE-Federally Endangered, FP-Federally Protected, SE-State Endangered, ST-State Threatened, SP -State Protected, SR-State Rare, SSC-Species of Special Concern, BGEPA-Bald and Golden Eagle Protection Act, SSSP-State Special Status Species

List of Key Contacts:

Type	Name/Title	Organization	Phone
C	/Coordinator	Native American Heritage Commission	(916) 373-3710
C	/Coordinator	Northwest Information Center	(707) 588-8455
E	/Manager	Central Delta Water Agency	(209) 969-7755
E	/Office	Mandeville Island Reclamation District	(209) 946-0268
O	/Dispatch, 24-hr	California Department of Water Resources	(916) 574-2714
S	/Dispatch, 24-hr	San Joaquin Office of Emergency Services	(209) 953-6200
T	/Environmental Program Manager	CA Dept. of Fish & Wildlife, Bay Delta Region	(707) 576-2837
T	/Restoration Ecologist	US Department of Agriculture	(530) 304-2304
T	/Spill Response Coordinator	USFWS, SF Bay-Delta Office	(916) 799-0588

C – Cultural, Historic, Archaeological; E – Entry/Owner/Access; O – Other; S – Safety; T – Trustee; X – Exclusion or Security

Additional Site Summary Comments:

This is a known great blue heron rookery. There are several sensitive plant species in the area also.

Concerns and Advice to Responders:

The major oil issues here are oiling of vegetation and marshes and penetration into burrows and riprap. Contain the released oil before spreading throughout waterways.

Hazard and Restrictions:

Waters are deep draft except in narrow channels between islands, beware of snags and pilings in the shallows. Aerial traffic beware of powerlines. Slips, trips and falls on riprap shoreline.

Site Strategies:**Site Validation Level: III**

Strategy: 2-060.1 Objective: WEST END: Exclude/Divert/Collect booming (at R58)

Strategy: During a flood tide, set 1700 ft of 9X9 Hboom in a "J" configuration along the west side of the Venice Island Peninsula forming a collection pocket in the back eddy. Northern tip of boom should be pointed towards cluster of trees in the distance. Land based skim/collect oil from the Venice Levee road.

Table of Response Resources

Equipment	Sub-Type	Size	Unit	QTY	Unit	Last Page Update
Boom	Harbor	9x9 inch		1700	feet	<i>Strategy Updated:</i> 11/22/2016
Boom	Sorbent			1700	feet	<i>Last Test:</i> 11/22/2016
Anchor	Danforth	25 lb		8		
Vessel	Boom Boat			1		
Vessel	Skiff or Punt			1		
Staff	Staff to Deploy			5		

Strategy: 2-060.2 Objective: Exclude oil from main marsh exposure to channel and smaller channel openings from ship channel and river.

Strategy: Deploy 6X6 Sboom across each SJR Channel face: 4000' at Venice tip and 2500' at Mandeville . Back with sorbent. Block small sloughs, and perimeter marsh edges with 6X6 and sorbents.

Table of Response Resources

Equipment	Sub-Type	Size	Unit	QTY	Unit	Last Page Update
Boom	Swamp	6x6 inch		8000	feet	
Boom	Sorbent			8000	feet	
Anchor	Danforth	22 lb		17		
Vessel	Boom Boat			4		
Vessel	Skiff or Punt			1		
Staff	Staff to Deploy			12		

Strategy: 2-060.3 Objective: EAST END: Exclude/Contain boom (ar R6), execute Ward Cut and Middle River Strategies

Strategy: Execute adjacent site strategies: See strategy for Ward Cut Complex (2-050.2) and strategy for Middle River Mouth - (2-950.1)

Table of Response Resources

Last Page Update**Logistics:**

Directions: Key access to site is from the Ship Channel (lights R58- R6) is by boat from Herman & Helen's or Korth's Marina or other central delta marinas. Vehicle access is from bordering levees: only Empire Tract and Venice Island is easily accessible via 8-mile Road from I-5.

Land Access: Access from levees unless they are saturated.

On-Water Limitations: Nearest marine facilities, fuel and launch are at Herman & Hellens at the end of 8-mile Rd and the mouth of Mokelumne to west.

Facilities, Staging Areas, Command Posts, Available Equipment: Good deployment staging site at tip of Empire Tract on San Joaquin R. Also levees of Venice Island. Facilities on Empire Tract include rental boats and houseboats, fuel, moorage, restaurant, electricity and water, marine supply and repair and some camping.

Communications Problems: Good cell reception in area.



County: San Joaquin **ACP Division/Segment:****NOAA Chart:** 18661 SACRAMENTO / **Map Book:** SF Bay and Delta **Decimal Degrees:** 38.053523 -121.500419
SAN JOAQUIN RIVER**Site Description:**

This site extends about 4 miles from its mouth at the Stockton Deep Water Channel at G 11 northerly to its junction with the South Mokelumne River at Hwy 12. White and Potato Slough intersect this reach. Several Special Status Species occur here, and there are several sizable channel islands and some berm islands. At the San Joaquin River end of the channel is an ecologically rich area, Little Venice Island, which is a shallow flooded island surrounded by eroding levees and natural vegetation. This lower area is very vulnerable and difficult to remediate. This water way is also an important path for south delta water export.

Resources at Risk:*ESI and Habitat:* 6B Riprap

9B Vegetated low banks

8B Sheltered solid man-made structures

List of Resources at Risk:

	Resource Name	Status	Presence	Sensitivity
Birds	California black rail	FP, ST		Mar-Aug
Birds	Swainson's hawk	FP, ST		Mar-Sep
Fish	delta smelt	FT, SE		Mar-May
Fish	longfin smelt	ST		Nov-May
Fish	steelhead - Central/Northern California	FT		Nov-Apr
Plants	Mason's lilaeopsis	SR		Apr-Nov
Reptiles	giant garter snake	FT, ST		Jul-Oct
Reptiles	Western pond turtle	SSC		

FT-Federally Threatened, FE-Federally Endangered, FP-Federally Protected, SE-State Endangered, ST-State Threatened, SP -State Protected, SR-State Rare, SSC-Species of Special Concern, BGEPA-Bald and Golden Eagle Protection Act, SSSP-State Special Status Species

List of Key Contacts:

Type	Name/Title	Organization	Phone
C	/Coordinator	Native American Heritage Commission	(916) 373-3710
C	/Coordinator	Northwest Information Center	(707) 588-8455
E	/Manager	Central Delta Water Agency	(209) 969-7755
E	/Office	Mandeville Island Reclamation District	(209) 946-0268
E	/Engineer	Terminus Tract Reclamation District	(209) 649-4555
E	/Engineer	Terminus Tract Reclamation District	(209) 465-5883
E	/Office	Webb Tract Reclamation District	(209) 943-5551
O	/Dispatch, 24-hr	California Department of Water Resources	(916) 574-2714
S	/Dispatch, 24-hr	San Joaquin Office of Emergency Services	(209) 953-6200
T	/Environmental Program Manager	CA Dept. of Fish & Wildlife, Bay Delta Region	(707) 576-2837
T	/Restoration Ecologist	US Department of Agriculture	(530) 304-2304
T	/Spill Response Coordinator	USFWS, SF Bay-Delta Office	(916) 799-0588

C – Cultural, Historic, Archaeological; E – Entry/Owner/Access; O – Other; S – Safety; T – Trustee; X – Exclusion or Security

Additional Site Summary Comments:

Several sensitive plant species occur in this area. Beware of submerged hazards.

Concerns and Advice to Responders:

Penetration into marsh, riprap, and animal and invertebrate burrows in levees, islands and uplands. Emergent freshwater marsh vegetation cleaning issues. Contain the released oil before spreading throughout waterways.

Hazard and Restrictions:

Aerial traffic beware of powerlines. Dense Poison Oak. Slips trips and falls on levee riprap. Beware of shallows and snags in side channels.

Site Strategies:**Site Validation Level: II**

Strategy: 2-065.1 Objective: SOUTH END: Exclusion/Containment at the Slough mouth (near Ship Channel); Site subject to strong wind/currents.

Strategy: Set booms across slough mouth between Venice Island and Empire Tract. Anchor one boom end from near west side levee on corner of Venice Isl and the other end near east side riprap levee (Empire Tract) 1000 ft across the slough on a diagonal appropriate to divert oil to Empire shore for collection. Leave trailing boom lengths for a tidal seal. Back with sorbent boom.

Table of Response Resources

Equipment	Sub-Type	Size	Unit	QTY	Unit	Last Page Update
Boom	Harbor	9x9 inch		1000	feet	
Boom	Sorbent			1000	feet	
Anchor	Danforth	25 lb		5		
Vessel	Boom Boat			1		
Vessel	Skiff or Punt			1		
Staff	Staff to Deploy			5		

Strategy: 2-065.2 Objective: NORTH END: Exclusion/Containment of Slough at South Mokelumne River junction.

Strategy: Anchor one end of 6X6 Sboom at the west base of old bridge abutment and anchor the other end downstream at a diagonal toward Terminous shore, leaving trailing boom ends for tidal seal. Use Terminous shore as possible skim/collection site. Back with sorbent.

Table of Response Resources

Equipment	Sub-Type	Size	Unit	QTY	Unit	Last Page Update
Boom	Swamp	6x6 inch		300	feet	
Boom	Sorbent			300	feet	
Anchor	Danforth	25 lb		3		
Vessel	Skiff or Punt			1		
Staff	Staff to Deploy			3		

Strategy: 2-065.3 Objective: Exclusion (at Ship Channel) of LITTLE VENICE ISLAND and side Sloughs.

Strategy: Execute strategies for Whites Slough (2-070) and Potato Slough (2-080). For Little Venice Island block openings from San Joaquin with 500' 6X6+ exclusion boom; and also for opening from Little Connection Slough use 3000' 6X6+ exclusion boom. Back with sorbents.

Table of Response Resources

Equipment	Sub-Type	Size	Unit	QTY	Unit	Last Page Update
Boom	Swamp	6x6 inch		3500	feet	
Boom	Sorbent			3500	feet	
Anchor	Danforth	22 lb		10		
Vessel	Skiff or Punt			1		
Staff	Staff to Deploy			3		

Logistics:

Directions: Key access to deployment is by boat. Site is water accessible from Stockton Deep Water Channel north at G 14 and from marina on adjacent islands. Land access is from private levee roads Bouldin Isl. via Hwy 12 and Empire Tract via 8-mile Rd from I-5.

Land Access: Access from levees only when dry. Stay off when saturated.

On-Water Limitations: Marina service and boat launch are available at Herman & Helen's at end of 8-mile Rd and at Terminous on Hwy 12.

Facilities, Staging Areas, Command Posts, Available Equipment: Deployment possible from nearby levees. Also from nearby marinas Consider using the end of 8-mile Rd as a major deployment site for this section of the Delta. Rental boats, restaurants, water, power, fuel, marine repair and some camping is available at nearby marina/resorts.

Communications Problems: Cell reception may vary on your location.



County: San Joaquin **ACP Division/Segment:****NOAA Chart:** 18661 SACRAMENTO / **Map Book:** SF Bay and Delta **Decimal Degrees:** 38.089645 -121.528948
SAN JOAQUIN RIVER**Site Description:**

This site begins at its mouth on Little Potato Slough two miles south of Terminous to its junction with the San Joaquin River six miles westerly. It is bordered by Bouldin Island on the north and Venice Island to the south. The slough has many freshwater marsh berms and channel islands in natural condition; some are larger than an acre. Levee banks are rip-rapped with pockets of emergent marsh/riparian growth.

Resources at Risk:*ESI and Habitat:* 6B Riprap

9B Vegetated low banks

10B Freshwater marshes

List of Resources at Risk:

	Resource Name	Status	Presence	Sensitivity
Birds	Swainson's hawk	FP, ST		Mar-Sep
Fish	longfin smelt	ST		Nov-May
Fish	steelhead - Central/Northern California	FT		Nov-Apr
Fish	delta smelt	FT, SE		Mar-May
Reptiles	giant garter snake	FT, ST		Jul-Oct

FT-Federally Threatened, FE-Federally Endangered, FP-Federally Protected, SE-State Endangered, ST-State Threatened, SP -State Protected, SR-State Rare, SSC-Species of Special Concern, BGEPA-Bald and Golden Eagle Protection Act, SSSP-State Special Status Species

List of Key Contacts:

Type	Name/Title	Organization	Phone
C	/Coordinator	Native American Heritage Commission	(916) 373-3710
C	/Coordinator	Northwest Information Center	(707) 588-8455
E	/Manager	Central Delta Water Agency	(209) 969-7755
E	/Office	Mandeville Island Reclamation District	(209) 946-0268
E	/Office	Webb Tract Reclamation District	(209) 943-5551
O	/Dispatch, 24-hr	California Department of Water Resources	(916) 574-2714
S	/Dispatch, 24-hr	San Joaquin Office of Emergency Services	(209) 953-6200
T	/Environmental Program Manager	CA Dept. of Fish & Wildlife, Bay Delta Region	(707) 576-2837
T	/Restoration Ecologist	US Department of Agriculture	(530) 304-2304
T	/Spill Response Coordinator	USFWS, SF Bay-Delta Office	(916) 799-0588

C – Cultural, Historic, Archaeological; E – Entry/Owner/Access; O – Other; S – Safety; T – Trustee; X – Exclusion or Security

Additional Site Summary Comments:

Several sensitive plant species occur in this area.

Concerns and Advice to Responders:

Emergent and marsh vegetation damage and cleaning are the largest issues. Oil will penetrate into freshwater marsh areas, riprap, and animal and invertebrate burrows in levees, islands and uplands.

Hazard and Restrictions:

Aerial traffic beware of powerlines. Dense Poison Oak. Slips trips and falls on levee riprap.

Site Strategies:**Site Validation Level: II**

Strategy: 2-070.1 Objective: Exclude/Contain boom at east Slough mouth on Little Potato Slough.

Strategy: Set boom across the slough mouth. Anchor each boom end near adjacent riprap levees, leaving a trailing boom length for a tidal seal. Back with sorbent boom.

Table of Response Resources

Equipment	Sub-Type	Size	Unit	QTY	Unit	Last Page Update
Boom	Swamp	6x6 inch		400	feet	
Boom	Sorbent			400	feet	
Anchor	Danforth	22 lb		5		
Vessel	Skiff or Punt			1		
Staff	Staff to Deploy			3		

Strategy: 2-070.2 Objective: Exclude/Contain boom mouth at San Joaquin River.

Strategy: The slough is wide and exposed to wave wash and strong currents so that boom must be placed upstream and diagonal away from the River. At a bend of the west side (Bouldin Island) levee about 100 yards upstream from mouth (at PG&E transformer), anchor one end of 9X9 Hboom and run 1200 ft of boom upstream to anchor other end near Venice Isl levee (east side). Leave trailing boom ends for tidal seal. The pocket at the Venice shore has natural collection eddies and may be suitable for collection/skim site.

Table of Response Resources

Equipment	Sub-Type	Size	Unit	QTY	Unit	Last Page Update
Boom	Harbor	9x9 inch		1200	feet	
Anchor	Danforth	25 lb		5		
Vessel	Boom Boat			1		
Vessel	Skiff or Punt			1		
Staff	Staff to Deploy			5		

Logistics:

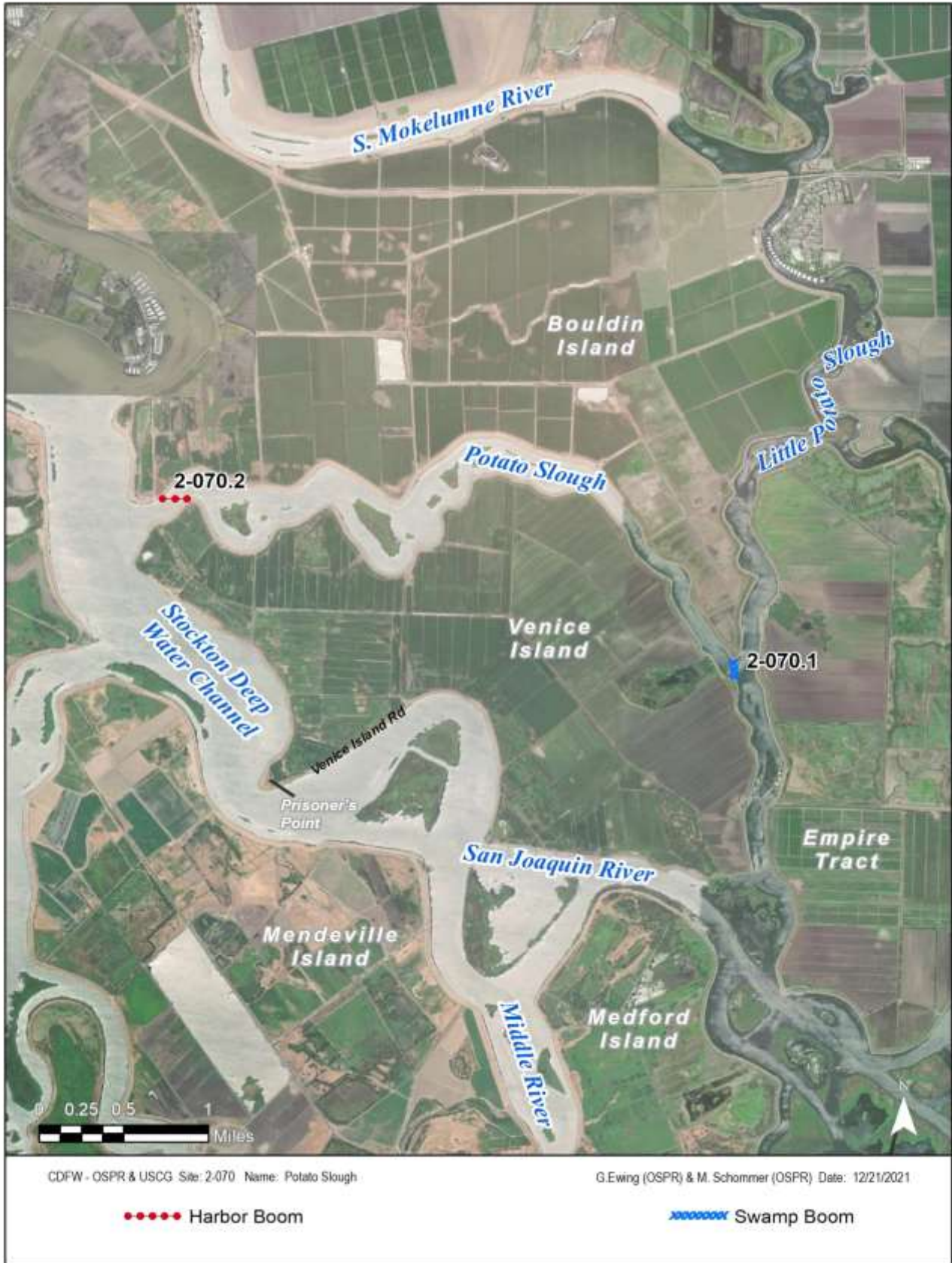
Directions: Key access to site by boat accessible from Stockton Deep Water Channel to the west mouth at G51 and to the east mouth up (north) Little Potato Slough at marker G11. Private levee road are accessible on north (Bouldin Isl.) from Hwy 12 and on the south (Venice Isl.) from I-5, via 8-mile Rd.

Land Access: Access from adjacent levees unless saturated, stay off to avoid damage and getting stuck.

On-Water Limitations: Marina service is available at terminus, end of 8-mile Rd, Also at tip of Andrus Island - Korth's Marina at Mokelumne half mile from west end.

Facilities, Staging Areas, Command Posts, Available Equipment: Deployment and support possible from nearby levees of Bouldin and Venice Isls during dry weather. Also from nearby marinas. Consider using the end of 8-mile Rd or terminus or mouth of Mokelumne as a major deployment site for this section of the Delta.

Communications Problems: Cell reception varies on your location.



County: San Joaquin **ACP Division/Segment:****NOAA Chart:** 18661 SACRAMENTO / **Map Book:** SF Bay and Delta **Decimal Degrees:** 38.081064 -121.469912
SAN JOAQUIN RIVER**Site Description:**

This site extends from its junction with Little Potato Slough two miles south of Terminous, six miles easterly to its end, and includes the side channels Telephone, Honker and Bishop Cuts. The Slough is laced with channels among its many berm and channel islands which remain in natural marsh/shrub -scrub condition. Levee banks are generally rip-rapped but with pockets of emergent freshwater marsh habitat.

Resources at Risk:*ESI and Habitat:* 6B Riprap

9B Vegetated low banks

10B Freshwater marshes

List of Resources at Risk:

	Resource Name	Status	Presence	Sensitivity
Birds	California black rail	FP, ST		Mar-Aug
Birds	Swainson's hawk	FP, ST		Mar-Sep
Fish	delta smelt	FT, SE		Mar-May
Fish	longfin smelt	ST		Nov-May
Fish	steelhead - Central/Northern California	FT		Nov-Apr
Plants	Mason's lilaeopsis	SR		Apr-Nov
Reptiles	giant garter snake	FT, ST		Jul-Oct
Reptiles	Western pond turtle	SSC		

FT-Federally Threatened, FE-Federally Endangered, FP-Federally Protected, SE-State Endangered, ST-State Threatened, SP -State Protected, SR-State Rare, SSC-Species of Special Concern, BGEPA-Bald and Golden Eagle Protection Act, SSSP-State Special Status Species

List of Key Contacts:

Type	Name/Title	Organization	Phone
C	/Coordinator	Native American Heritage Commission	(916) 373-3710
C	/Coordinator	Northwest Information Center	(707) 588-8455
E	/Manager	Central Delta Water Agency	(209) 969-7755
E	/Engineer	Terminous Tract Reclamation District	(209) 649-4555
E	/Engineer	Terminous Tract Reclamation District	(209) 465-5883
E	/Office	Webb Tract Reclamation District	(209) 943-5551
O	/Dispatch, 24-hr	California Department of Water Resources	(916) 574-2714
S	/Dispatch, 24-hr	San Joaquin Office of Emergency Services	(209) 953-6200
T	/Environmental Program Manager	CA Dept. of Fish & Wildlife, Bay Delta Region	(707) 576-2837
T	/Restoration Ecologist	US Department of Agriculture	(530) 304-2304
T	/Spill Response Coordinator	USFWS, SF Bay-Delta Office	(916) 799-0588

C – Cultural, Historic, Archaeological; E – Entry/Owner/Access; O – Other; S – Safety; T – Trustee; X – Exclusion or Security

Additional Site Summary Comments:

Several sensitive plant species occur in this area.

Concerns and Advice to Responders:

Penetration into marsh areas, riprap, and animal and invertebrate burrows in levees, islands and uplands. Emergent freshwater marsh & vegetation cleaning issues. Contain the released oil before spreading throughout waterways.

Hazard and Restrictions:

Aerial traffic beware of high wires. Boats beware of shallows and snags at margins and terminal ends. Poison Oak. Slips trips and falls.

Site Strategies:**Site Validation Level: II**

Strategy: 2-080.1 Objective: Exclude/Contain boom at the junction with Little Potato Slough on each side of Devil's Isle.

Strategy: Set booms across both channels of slough mouth. Anchor one boom end near adjacent riprap levees. Anchor other end near Devil's Isle, the channel island in the mouth, leaving a trailing boom length for a tidal seal. (See impact note) Back with sorbent boom.

Table of Response Resources

Equipment	Sub-Type	Size	Unit	QTY	Unit	Last Page Update
Boom	Swamp	6x6 inch		400	feet	
Boom	Sorbent			400	feet	
Anchor	Danforth	25 lb		5		
Vessel	Skiff or Punt			1		
Staff	Staff to Deploy			3		

Strategy: 2-080.2 Objective: Exclude/contain booming at Honker Cut.

Strategy: At the intersection of Honker cut and White Slough anchor one end of 6X6 swamp boom at King Island levee and the other at Empire Tract, leaving trailing boom ends for tidal seal. This strategy can be deployed nearer 8 Mile Road if circumstances are favorable.

Table of Response Resources

Equipment	Sub-Type	Size	Unit	QTY	Unit	Last Page Update
Boom	Swamp	6x6 inch		200	feet	
Anchor	Danforth	25 lb		2		
Vessel	Skiff or Punt			1		
Staff	Staff to Deploy			2		

Strategy: 2-080.3 Objective: Exclude/contain booming at Bishop Cut.

Strategy: At the intersection of Bishop Cut and White Slough anchor one end of 6X6 Swamp boom at Rio Blanco levee and the other at King Island, leaving trailing boom ends for tidal seal. This strategy can be deployed nearer 8 Mile Road if circumstances are favorable.

Table of Response Resources

Equipment	Sub-Type	Size	Unit	QTY	Unit	Last Page Update
Boom	Swamp	6x6 inch		200	feet	
Anchor	Danforth	25 lb		2		
Vessel	Skiff or Punt			1		
Staff	Staff to Deploy			2		

Logistics:

Directions: Key access to site by boat accessible is from Stockton Deep Water Channel at marker G11 or from end of 8-mile road, north up Little Potato Slough or down same from Terminous. Private levee roads are accessible on north from Hwy 12 via Correia Rd or on south from I-5, via 8-mile Rd to Correia Rd, Rio Blanco Rd, and King Isl. and Empire Tract levees.

Land Access: Levee roads are good unless wet, stay off unless dry.

2-080-A Site Strategy - White's Slough

2-080-A

On-Water Limitations: Marina service is available at Terminous, end of 8-mile Rd, and Disappointment Slough ends of Bishop and Empire Cuts.

Facilities, Staging Areas, Command Posts, Available Equipment: Deployment is possible from nearby levees. Also from nearby marinas. Consider using the end of 8-mile Rd or Terminus as a major deployment site for this section of the delta.

Communications Problems: Cell reception varies upon your location.



9823.2 Response Summary Tables

A summary of the response resources is listed by site and sub-strategy next.

Summary of ACP 2 GRA 10 Response Resources by Site and Sub-Strategy

Site	Site Name	PREVENTION OBJECTIVE OR CONDITION FOR DEPLOYMENT		
Sub-Strategy	Equipment	Sub-Type	Size/Unit	QTY/Unit
2-010	San Joaquin River, Port of Stockton			
.1 - Exclusion/Containment/Collection booming at Port mouth				
	Anchor	Danforth	25 lb	8
	Staff	Staff to Deploy		5
	Vessel	Boom Boat		1
	Boom	Sorbent		2100 feet
	Boom	Oil Snare (pom-pom)		50 feet
	Boom	Harbor	9x9 inch	2000 feet
	Vessel	Skiff or Punt		1
.2 - Exclusion/Collection/Containment boom at San Joaquin River mouth at Port junction. See San Joaquin R, Stockton to Lathrop Reach.				
	Vessel	Skiff or Punt		1
	Staff	Staff to Deploy		3
	Boom	Sorbent		1000 feet
	Anchor	Danforth	22 lb	4
	Boom	Swamp	6x6 inch	1500 feet
.3 - Oil Recovery with shoreside skimming				
	Staff	Staff to Deploy		3
	skimmer	self propelled		1
2-015	Calaveras River Mouth at San Joaquin River			
.1 - Exclude/Contain boom at the Calaveras River mouth on San Joaquin River				
	Boom	Sorbent		500 feet
	Anchor	Danforth	25 lb	4
	Vessel	Skiff or Punt		1
	Boom	Harbor	9x9 inch	500 feet
	Staff	Staff to Deploy		3
2-018	Burns Cutoff at Rough and Ready Island			
.1 - Exclude/Contain boom at San Joaquin River (upstream) east end.				
	Staff	Staff to Deploy		3
	Boom	Swamp	6x6 inch	200 feet
	Boom	Sorbent		200 feet
	Anchor	Danforth	22 lb	3
	Vessel	Skiff or Punt		1
.2 - Exclude/Contain boom at mouth on Deep Water Channel (downstream/east end)				
	Anchor	Danforth	22 lb	2
	Boom	Sorbent		100 feet
	Vessel	Skiff or Punt		1
	Staff	Staff to Deploy		3
	Boom	Swamp	6x6 inch	100 feet
2-020	San Joaquin River, Stockton to Lathrop Reach			
.1 - Divert/Exclude/Contain/Collect boom at mouth of San Joaquin at Stockton Harbor entrance (SAME AS 2-010.2 Stockton Harbor).				
	Boom	Swamp	6x6 feet	400
	Staff	Staff to Deploy		5
	Vessel	Skiff		1
	Anchor	Danforth	22 lb	5
	Boom	Sorbent	feet	700
	Boom	Oil Snare (pom-pom)	feet	50
.2 - diversion to shore collection and protective boom for marshy/riparian exposures.				
	Boom	Sorbent		700 feet
	Boom	Swamp	6x6 inch	400 feet
	Anchor	Danforth	22 lb	5
	Vessel	Skiff or Punt		1
	Staff	Staff to Deploy		3
	Boom	Oil Snare (pom-pom)		50 feet
.3 - Oil Recovery by skimming				
	skimmer	self propelled		1
	Staff	Staff to Deploy		3

Sub-Strategy **PREVENTION OBJECTIVE OR CONDITION FOR DEPLOYMENT**

Equipment	Sub-Type	Size/Unit	QTY/Unit
2-021 French Camp Slough			
.1 - Exclusion/Containment booming at mouth to prevent entering or leaving the slough mouth: Stop oil entry on incoming tide or oil escapement if originating within slough.			
Boom	Swamp	6x6 inch	500 feet
Boom	Sorbent		500 feet
Anchor	Danforth	25 lb	5
Vessel	Skiff or Punt		1
Staff	Staff to Deploy		3
.2 - Deflection to collection away from slough to opposite side of San Joaquin River when oil is coming down-river from upstream.			
Boom	Oil Snare (pom-pom)		50 feet
Staff	Staff to Deploy		3
Vessel	Skiff or Punt		1
Boom	Sorbent		300 feet
Boom	Swamp	6x6 inch	300 feet
Anchor	Danforth	25 lb	5
.3 - Oil Recovery by skimming			
skimmer	shoreside		1
Staff	Staff to Deploy		3
2-030 San Joaquin River, Roberts Island Reach			
.1 - Diversion/Collection/exclusion/containment boom to halt oil movement in Stockton Channel			
Boom	Harbor	9x9 inch	1200 feet
Boom	Oil Snare (pom-pom)		50 feet
Boom	Sorbent		100 feet
Anchor	Danforth	25 lb	6
Vessel	Boom Boat		1
Vessel	Skiff or Punt		1
.2 - Exclusion/protection booming of openings and marshy margins Walters Island to keeping oil from backside channel and cover Deep Water frontage with sorbent.			
Vessel	Boom Boat		1
Vessel	Skiff or Punt		1
Staff	Staff to Deploy		5
Boom	Harbor	9x9 inch	2000 feet
Boom	Sorbent		3000 feet
Anchor	Danforth	25 lb	7
.3 - Oil Recovery by skimming			
skimmer	shoreside		1
Staff	Staff to Deploy		3
2-033 Fourteenmile Slough			
.1 - Exclusion/containment boom of mouth at each end of Morrison Island (at lights G33 & G31)			
Anchor	Danforth	22 lb	5
Boom	Harbor	9x9 inch	1100 feet
Boom	Sorbent		500 feet
Vessel	Boom Boat		1
Vessel	Skiff or Punt		1
Staff	Staff to Deploy		5
.2 - Protection boom and sorbants of emergent vegetation on Morrison Island.			
Anchor	Stakes		11
Vessel	Skiff or Punt		1
Staff	Staff to Deploy		2
Boom	Sorbent		500 feet

Sub-Strategy **PREVENTION OBJECTIVE OR CONDITION FOR DEPLOYMENT**

Equipment	Sub-Type	Size/Unit	QTY/Unit
2-040 San Joaquin River, Hog Island Cut Complex			
.1 - NORTH SIDE: Exclude oil from backside of north Hog Island setting boom at each end of backside channel.			
Vessel	Skiff or Punt		1
Boom	Harbor	9x9 inch	3300 feet
Vessel	Boom Boat		1
Anchor	Danforth	25 lb	10
Staff	Staff to Deploy		5
Boom	Sorbent		3000 feet
.2 - SOUTH: Exclude oil from 21 Mile Slough (south margin of Spud Island) by booming each end.			
Anchor	Danforth	25 lb	6
Boom	Sorbent		200 feet
Vessel	Boom Boat		1
Vessel	Skiff or Punt		1
Staff	Staff to Deploy		5
Boom	Harbor	9x9 inch	1600 feet
.3 - WEST: Exclude/Divert/Collect boom, divert oil to levee bank for collection as wind and currents permit.			
Boom	Sorbent		100 feet
Vessel	Boom Boat		1
Vessel	Skiff or Punt		1
Anchor	Danforth	40 lb	8
Boom	Harbor	9x9 inch	2000 feet
Boom	Oil Snare (pom-pom)		50 feet
Staff	Staff to Deploy		5
.4 - Oil Recovery by skimming			
Staff	Staff to Deploy		3
skimmer	shoreside		1
2-045 Disappointment Slough			
.1 - Exclude/Contain booming the slough mouth near the Ship Channel at west end			
Vessel	Boom Boat		1
Vessel	Skiff or Punt		1
Staff	Staff to Deploy		5
Anchor	Danforth	25 lb	5
Boom	Harbor	9x9 inch	1300 feet
Boom	Sorbent		1500 feet
.2 - Exclude/Contain booming at Honker Cut and Bishop Cut.			
Boom	Swamp	6x6 inch	400 feet
Anchor	Danforth	22 lb	3
Vessel	Skiff or Punt		1
Staff	Staff to Deploy		3

Sub-Strategy **PREVENTION OBJECTIVE OR CONDITION FOR DEPLOYMENT**

Equipment	Sub-Type	Size/Unit	QTY/Unit
2-050 San Joaquin River, Ward Cut Islands Complex			
.1 - EAST End: Exclude/Divert/Collect boom (at light R16) and divert oil to shore for collection.			
Boom	Sorbent		2100 feet
Boom	Oil Snare (pom-pom)		50 feet
Anchor	Danforth	25 lb	8
Vessel	Boom Boat		1
Vessel	Skiff or Punt		1
Staff	Staff to Deploy		5
Boom	Harbor	9x9 inch	2350 feet
.2 - WEST END: Exclude/Divert/Collect boom. Wind waves are typically a problem here.			
Boom	Harbor	9x9 inch	1200 feet
Boom	Sorbent		1200 feet
Vessel	Boom Boat		1
Staff	Staff to Deploy		5
Vessel	Skiff or Punt		1
Anchor	Danforth	25 lb	5
.3 - Sorbent and exclusion boom included islands as necessary.			
Vessel	Boom Boat		1
Boom	Swamp	6x6 inch	4000 feet
Anchor	Danforth	25 lb	14
Vessel	Skiff or Punt		1
Staff	Staff to Deploy		5
Boom	Sorbent		4000 feet
.4 - Oil Recovery by skimming			
skimmer	shoreside		1
Staff	Staff to Deploy		3
2-060 San Joaquin River, Mandeville/Venice Tips Complex			
.1 - WEST END: Exclude/Divert/Collect booming (at R58)			
Staff	Staff to Deploy		5
Vessel	Skiff or Punt		1
Anchor	Danforth	25 lb	8
Boom	Harbor	9x9 inch	1700 feet
Vessel	Boom Boat		1
Boom	Sorbent		1700 feet
.2 - Exclude oil from main marsh exposure to channel and smaller channel openings from ship channel and river.			
Vessel	Skiff or Punt		1
Boom	Swamp	6x6 inch	8000 feet
Boom	Sorbent		8000 feet
Vessel	Boom Boat		4
Staff	Staff to Deploy		12
Anchor	Danforth	22 lb	17
.3 - EAST END: Exclude/Contain boom (ar R6), excute Ward Cut and Middle River Strategies			

Sub-Strategy **PREVENTION OBJECTIVE OR CONDITION FOR DEPLOYMENT**

Equipment	Sub-Type	Size/Unit	QTY/Unit
2-065 Little Potato Slough			
.1 - SOUTH END: Exclusion/Containment at the Slough mouth (near Ship Channel); Site subject to strong wind/currents.			
Boom	Harbor	9x9 inch	1000 feet
Boom	Sorbent		1000 feet
Anchor	Danforth	25 lb	5
Vessel	Boom Boat		1
Vessel	Skiff or Punt		1
Staff	Staff to Deploy		5
.2 - NORTH END: Exclusion/Containment of Slough at South Mokelumne River junction.			
Staff	Staff to Deploy		3
Boom	Swamp	6x6 inch	300 feet
Boom	Sorbent		300 feet
Vessel	Skiff or Punt		1
Anchor	Danforth	25 lb	3
.3 - Exclusion (at Ship Channel) of LITTLE VENICE ISLAND and side Sloughs.			
Boom	Swamp	6x6 inch	3500 feet
Boom	Sorbent		3500 feet
Anchor	Danforth	22 lb	10
Vessel	Skiff or Punt		1
Staff	Staff to Deploy		3
2-070 Potato Slough			
.1 - Exclude/Contain boom at east Slough mouth on Little Potato Slough.			
Staff	Staff to Deploy		3
Boom	Swamp	6x6 inch	400 feet
Boom	Sorbent		400 feet
Anchor	Danforth	22 lb	5
Vessel	Skiff or Punt		1
.2 - Exclude/Contain boom mouth at San Joaquin River.			
Vessel	Skiff or Punt		1
Vessel	Boom Boat		1
Boom	Harbor	9x9 inch	1200 feet
Staff	Staff to Deploy		5
Anchor	Danforth	25 lb	5
2-080 White's Slough			
.1 - Exclude/Contain boom at the junction with Little Potato Slough on each side of Devil's Isle.			
Boom	Swamp	6x6 inch	400 feet
Boom	Sorbent		400 feet
Anchor	Danforth	25 lb	5
Vessel	Skiff or Punt		1
Staff	Staff to Deploy		3
.2 - Exclude/contain booming at Honker Cut.			
Boom	Swamp	6x6 inch	200 feet
Anchor	Danforth	25 lb	2
Vessel	Skiff or Punt		1
Staff	Staff to Deploy		2
.3 - Exclude/contain booming at Bishop Cut.			
Anchor	Danforth	25 lb	2
Vessel	Skiff or Punt		1
Staff	Staff to Deploy		2
Boom	Swamp	6x6 inch	200 feet

9823.3 Lists of Economic Resources Susceptible to Oiling

A summary of Human Health and Safety Sites and Economic Resources is listed by GRA next. Refer to Section 9804 for more information.

Economic Sites - GRA 10

Site Information	Site Number & Location	Lat/Long & Priority
<p>Five Star Marina 345 N Yosemite St Stockton ca 95203 Phone: 209-471-0534 Site Description:</p>	<p>Site Number: 2-0-SJ-100-D Operational Division:</p>	<p>Public Marinas and Harbors D Lat/Long: 37.95 -121.31</p>
<p>Herman and Helen's 15135 W Eight Mile Rd Stockton CA 95219 Phone: 209-477-5364 Site Description:</p>	<p>Site Number: 2-0-SJ-105-D Operational Division:</p>	<p>Public Marinas and Harbors D Lat/Long: 38.06 -121.49</p>
<p>King Island Resort 11530 W Eight Mile Rd Stockton CA 95219 Phone: 209-477-5364 Site Description:</p>	<p>Site Number: 2-0-SJ-110-D Operational Division:</p>	<p>Public Marinas and Harbors D Lat/Long: 38.06 -121.46</p>
<p>Ladds Marina & Boat Repair 4911 Buckley Cove Way Stockton CA 95219 Phone: 209-477-9521 Site Description:</p>	<p>Site Number: 2-0-SJ-115-D Operational Division:</p>	<p>Public Marinas and Harbors D Lat/Long: 37.98 -121.37</p>
<p>River Point Landing 4950 Buckley Cove Way Stockton CA 95219 Phone: 209-951-4144 Site Description:</p>	<p>Site Number: 2-0-SJ-120-D Operational Division:</p>	<p>Public Marinas and Harbors D Lat/Long: 37.98 -121.38</p>
<p>Village West Marina & Resort 6649 Embarcadero Dr Stockton CA 95219 Phone: 209-951-1551 Site Description:</p>	<p>Site Number: 2-0-SJ-125-D Operational Division:</p>	<p>Public Marinas and Harbors D Lat/Long: 37.99 -121.37</p>
<p>Windmill Cove 7600 Windmill Cove Rd Stockton CA 95206 Phone: 209-469-9300 Site Description:</p>	<p>Site Number: 2-0-SJ-130-D Operational Division:</p>	<p>Public Marinas and Harbors D Lat/Long: 37.99 -121.41</p>