



Chapter 2

Data Warehouse Login

The following steps will allow you to login and access the Department's Data Warehouse Application:

Step 1

From the Department's Intranet Home Page, there are many ways to reach the "DFG Data Warehouse Main Menu." One way is to hover your mouse over the "Information Technology" tab and click on the "Automated Systems" link. From there, click on the "DFG Data Warehouse" link. You can also find links to the "DFG Data Warehouse Main Menu" on the Business Services, Accounting, Budgets and Procurements pages in the "Additional Links" sections. (To access the Department's Intranet Home Page from the Internet refer to Appendix A: Access the DFG Intranet from the Internet)



Step 2

Following the selection of the "DFG Data Warehouse" link, on the Automated Systems page, next click on the "DFG Data Warehouse" link on the Data Warehouse Main Menu page (second from the top). You will then see the Connect to Oracle BI Discoverer page displayed ("BI" stands for "Business Intelligence"). If there is a connection named under the Connection label skip to Step 4. If the page shows a blank area under the Connection label, you will need to create a connection. This will occur only the first time you access the Data Warehouse from a particular computer, or if you have deleted cookies from your browser, since the connection information is stored in a cookie on your C: drive.

Though this page permits you to connect on a one-time-only basis by filling out the "Connect Directly" information, there is no point in doing so, since you'll have to fill it out again completely each and every time you connect. It's better to follow the steps below to create a "permanent" connection.



Click on the **Create Connection** button to begin to create a connection.

ORACLE Discoverer Plus Business Intelligence

[Connect Directly](#)

Connect to OracleBI Discoverer
To connect to OracleBI Discoverer, click on a connection name or enter your connection details directly.

[Choose Connection](#)

Details	Connection	Description	Update	Delete

[Create Connection](#)

Connect Directly [Return to Top](#)

Enter your connection details below to connect directly to OracleBI Discoverer.

* Indicates required field.

Connect To: OracleBI Discoverer

* User Name:

* Password:

* Database:

End User Layer:

Locale: Locale retrieved from browser

[Go](#)

Copyright (c)2000, 2005 Oracle Corporation. All rights reserved.
[About OracleBI Discoverer Version 10.1.2.55.26](#)
[Oracle Technology Network](#)

[Help](#)

Once you have clicked on the **Create Connection** button, the Create Connection: Connection Details page will be displayed.

Step 3

On this page you will need to enter the detail information for your connection. This information consists of the Connection Name and Description and the Database Account Details.



Connection Name and Description

Connection Name

Enter in any connection name that you want. This is a mandatory entry and should be something meaningful to you which will allow you to easily identify what you are accessing. (Ex: “DFG Data Warehouse”)

Connection Description

No need to fill anything in here.

Locale

The value for this entry defaults to “Locale set in user’s browser”. Do not change this unless specifically instructed by the Warehouse Administrator.

Database Account Details

User Name

Your User Name will be provided to you by the Warehouse Administrator at the time your account has been established. This is usually, but not always, your Novell User



ID, (i.e.; first initial, last name). When you create a connection to the Data Warehouse it is unique to a single User Name.

Password

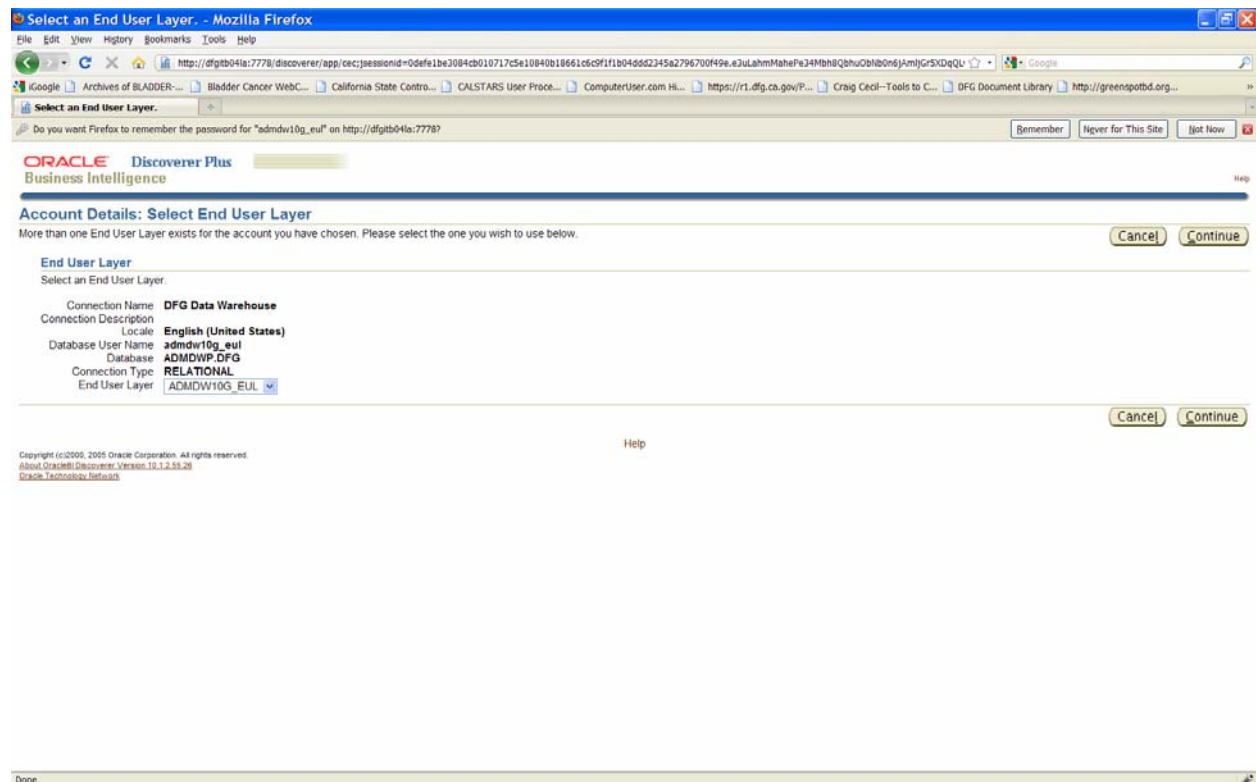
Your Password will be provided to you by the Warehouse Administrator at the same time you are given your User Name. Both your User Name and Password will initially be the same. You may change this password as often as you wish. (See Appendix B - Changing your password)

Database

Unless specifically told differently by the Warehouse Administrator, the database name will always be “ADMDWP”

Once you have entered your information for the Connection Name and Description and Database Account Details you will click on one of the **Apply and Connect** buttons which are located on the right hand side of the page either on the first line below the Create Connection: Connection Details page title or on the first line below the Database name field.

Once you have clicked on the **Apply and Connect** button the Select End User Layer page will be displayed with your connection information.





Be sure that ADMDW10G_EUL is the End User Layer selected. If not, select it, then press either of the two **Continue** buttons!

Step 4

You will now be connected to the Data Warehouse. Next time you open the “Connect to OracleBI Discoverer” page, you will see your new connection displayed.

The screenshot shows the Oracle Discoverer Plus Business Intelligence interface. At the top, there is a navigation bar with the Oracle logo and the text "Discoverer Plus Business Intelligence". Below this, there is a "Connect Directly" link. The main heading is "Connect to OracleBI Discoverer", followed by the instruction: "To connect to OracleBI Discoverer, click on a connection name or enter your connection details directly." There are two main sections: "Choose Connection" and "Connect Directly".

Choose Connection

Details	Connection	Description	Update	Delete
	Show DFG Data Warehouse			

Connect Directly

Enter your connection details below to connect directly to OracleBI Discoverer.

* Indicates required field.

Connect To: OracleBI Discoverer

* User Name:

* Password:

* Database:

End User Layer:

Locale: Locale retrieved from browser

Gg

Copyright (c)2000, 2008 Oracle Corporation. All rights reserved.
About OracleBI Discoverer: Version 10.1.2.55.20
Oracle Technology Network

[Exit](#) | [Help](#)

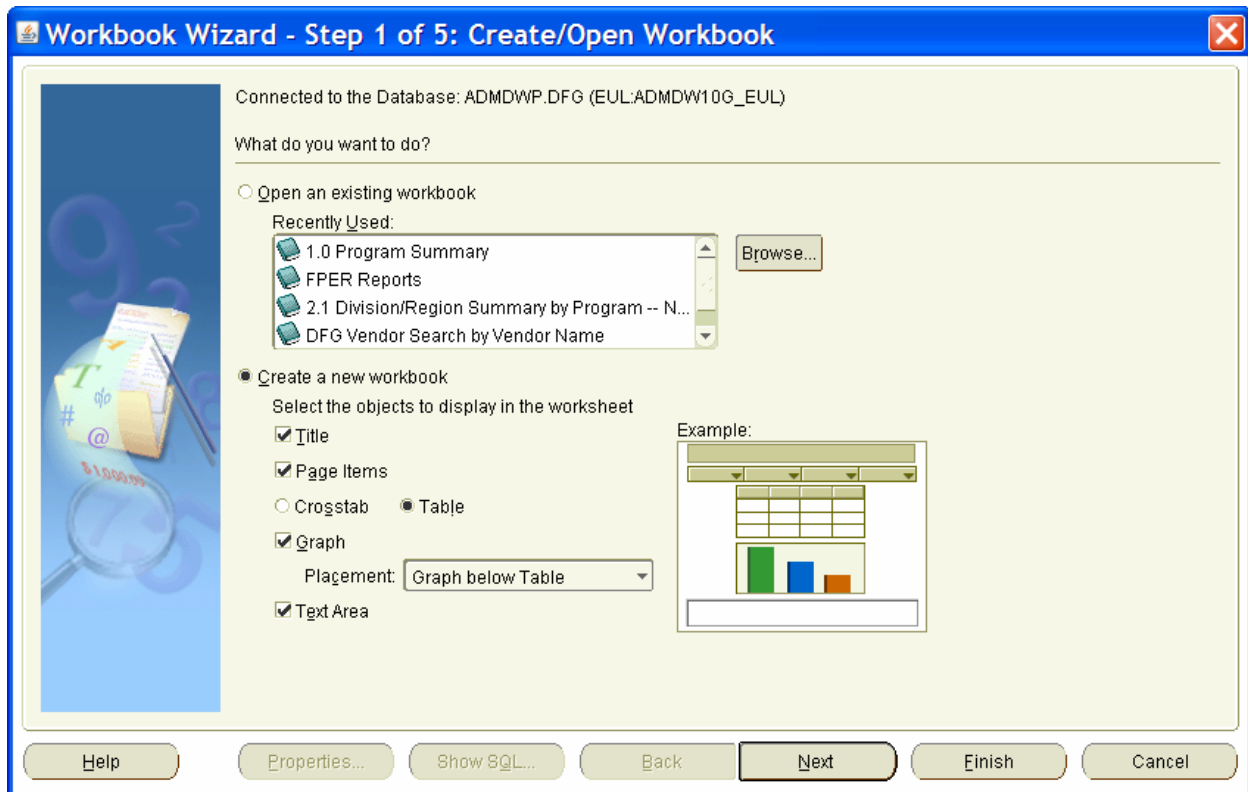


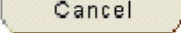

Setting Up Options

The first time you establish your Data Warehouse connection, you will need to set up several options which are available in Oracle Discoverer. The following section will step you through this process and identify those settings which need to be set for the Department's Data Warehouse application.

Step 1

Once you have successfully logged on to the Data Warehouse the initial page will be displayed with a pop-up window for the Workbook Wizard.

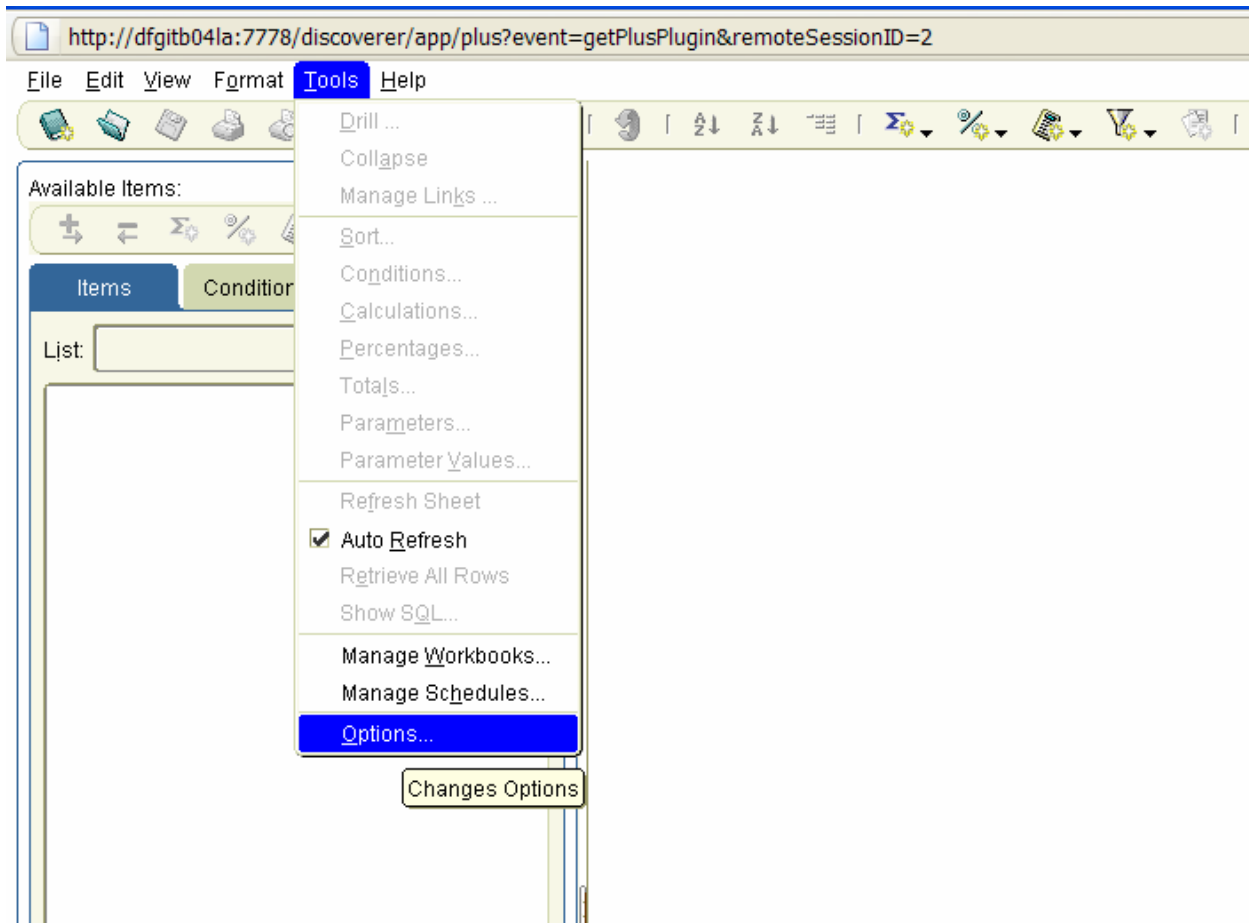


Close the Workbook Wizard pop-up window by clicking on the  button in the lower right hand corner. (You can also close this window by clicking on the  in the upper right hand corner.)



Step 2

From the “menu bar” select Tools / Options.

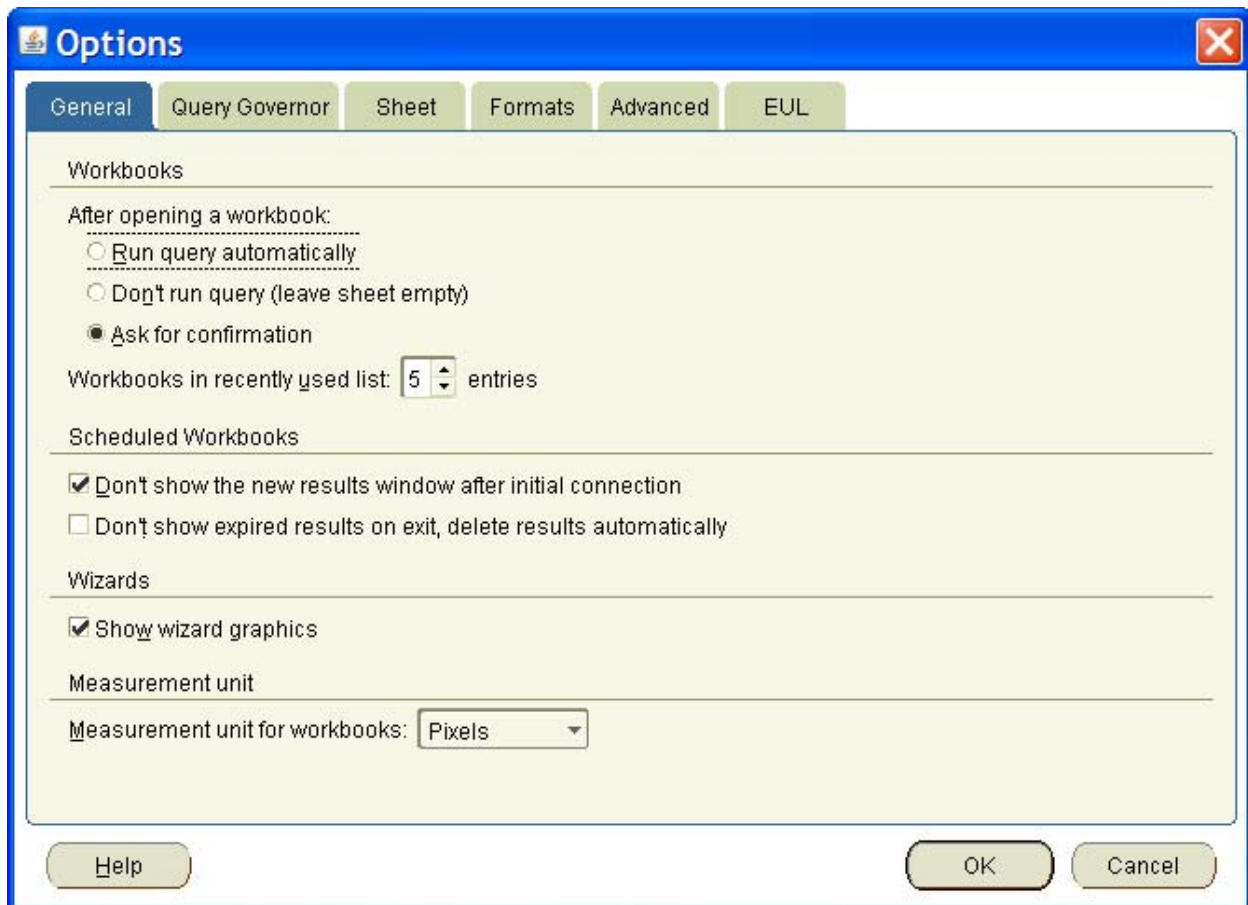


The following examples show the option values as they should be set. If your settings differ, you should change them to reflect the settings in the examples. If you are unsure, it is recommended that you contact the Warehouse Administrator for assistance.



Step 3

Under the “General” tab
in the “Workbooks” section
select the option: “Ask for confirmation”





Step 4

Under the “Query Governor” tab
in the “Summary Data” section
select the option: “Never”;
in the “Query Governor” section
uncheck the option: “Limit retrieved query data to:”; and
set the value for “Retrieve data incrementally in groups of:” to 10000

Options

General | **Query Governor** | Sheet | Formats | Advanced | EUL

Summary Data

Summary data can be set up by your Discoverer manager to improve performance.
When do you want to use summary data?

Always, when available

Only when summary data is not out of date (stale)

Never

Query Governor

Warn me if predicted query time exceeds: 5:00 mins:secs

Prevent queries from running longer than: 30:00 mins:secs

Limit retrieved query data to: 10000 rows

Retrieve data incrementally in groups of: 9999 rows

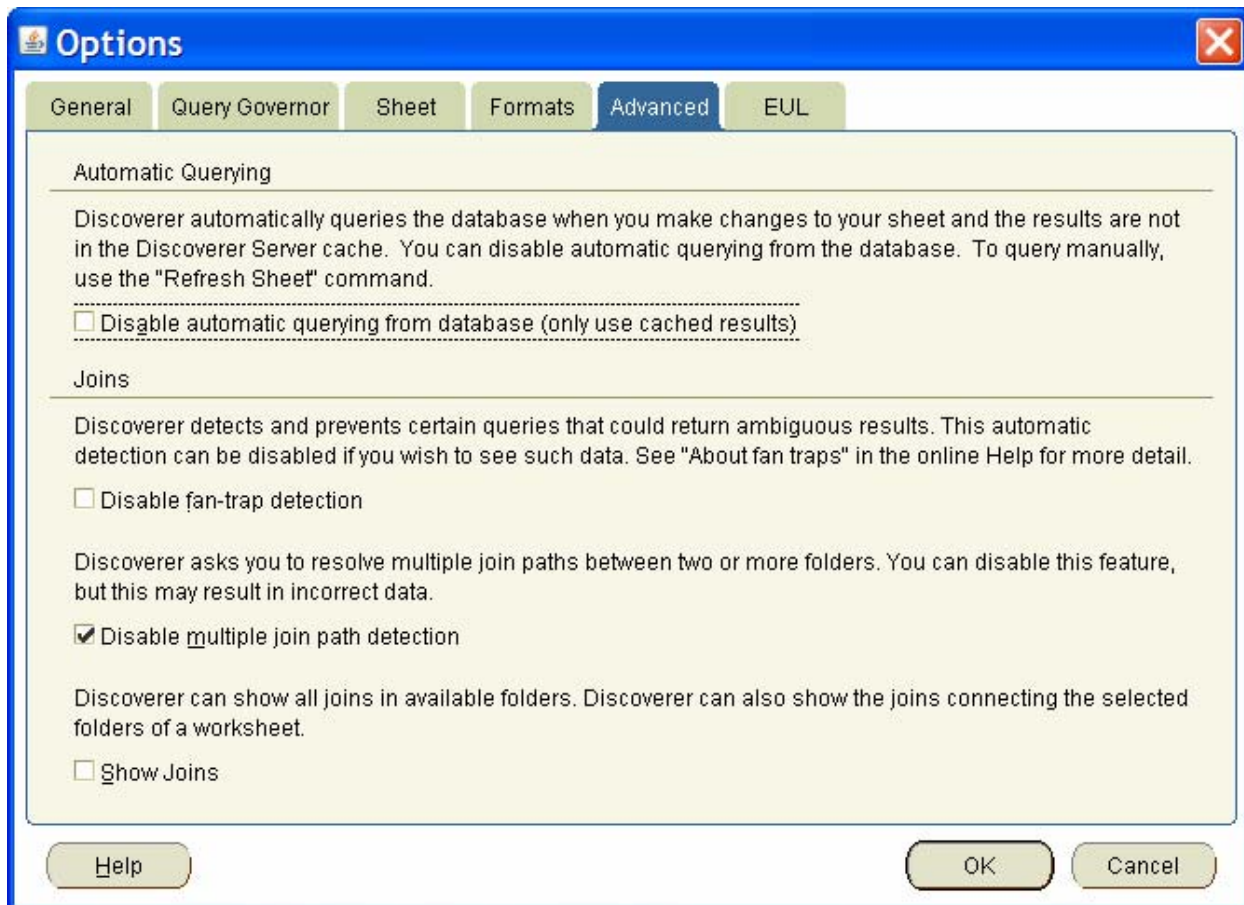
Cancel list-of-values retrieval after: 0:15 mins:secs

Help OK Cancel



Step 5

Under the “Advanced” tab
in the “Multiple Join Path Detection” section
select the option: “Disable multiple join path detection”





Change Password

You have the ability to change your password whenever you want to. The frequency you do this is up to you as there is no forced reset interval in the Data Warehouse Application.

In order to change your password you will need to follow these steps:

Step 1

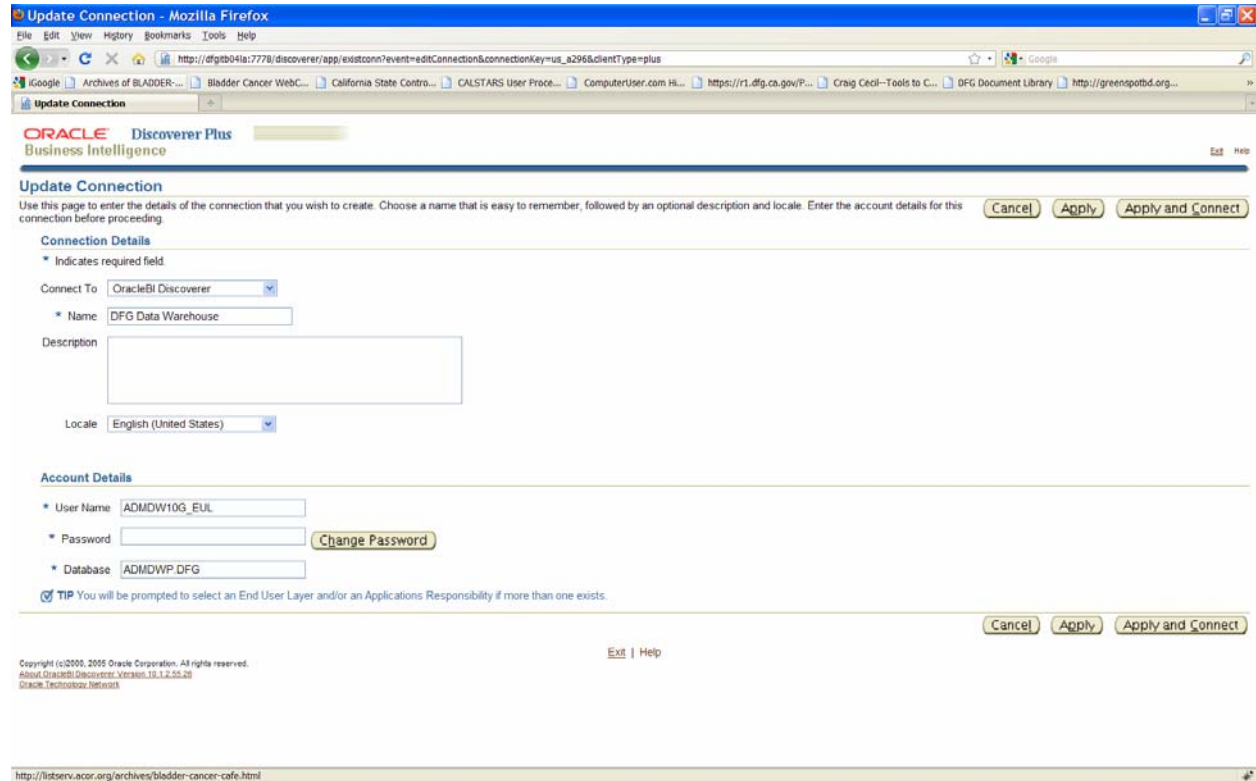
From the Connect to OracleBI Discoverer page you will click on the “Update” link located on the right hand side of the connection line as shown below.





Step 2

This will display the Update Connection page. From this page click on the **Change Password** button located on the right side of the Account Details section.





Step 3

From the Change Database Password page you will enter your current password in the “Old Password” field, your new password in the New Password field, and then again in the Verify New Password field. You will then click on one of the **Apply** buttons located on the right hand side of the page.

Your password change will be processed and you will be returned to the Update Connection page.