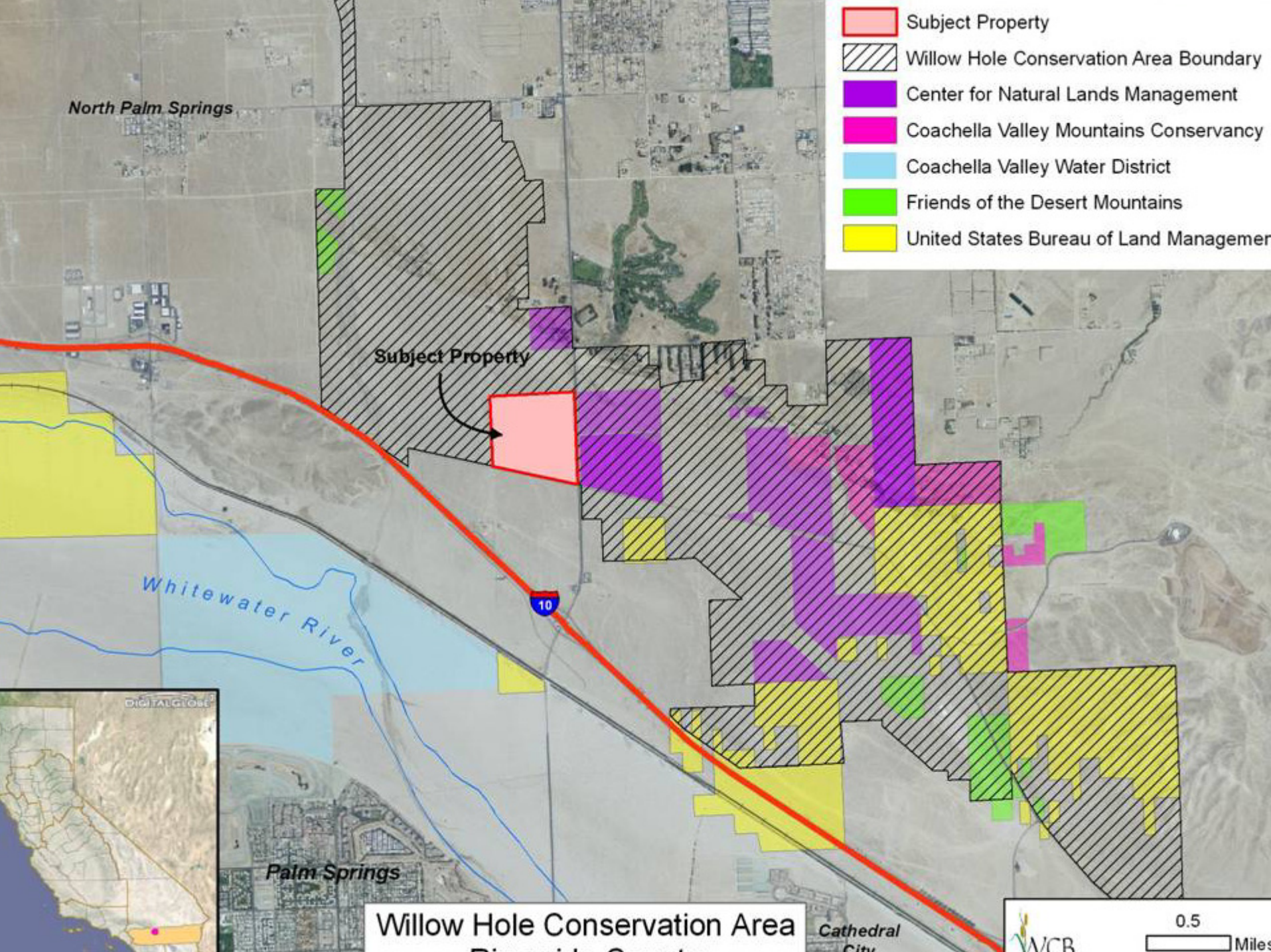


November 17, 2009 WCB Board Meeting
10:00 a.m., State Capitol, Room 112
Sacramento, California 95814



**Jenner Headlands,
Sonoma County**



6 Willow Hole Conservation Area Riverside County



Looking North on the Kading Parcel along Palm Drive.

6 Willow Hole Conservation Area Riverside County



View of wind turbines looking north on the Kading parcel.

6 Willow Hole Conservation Area Riverside County

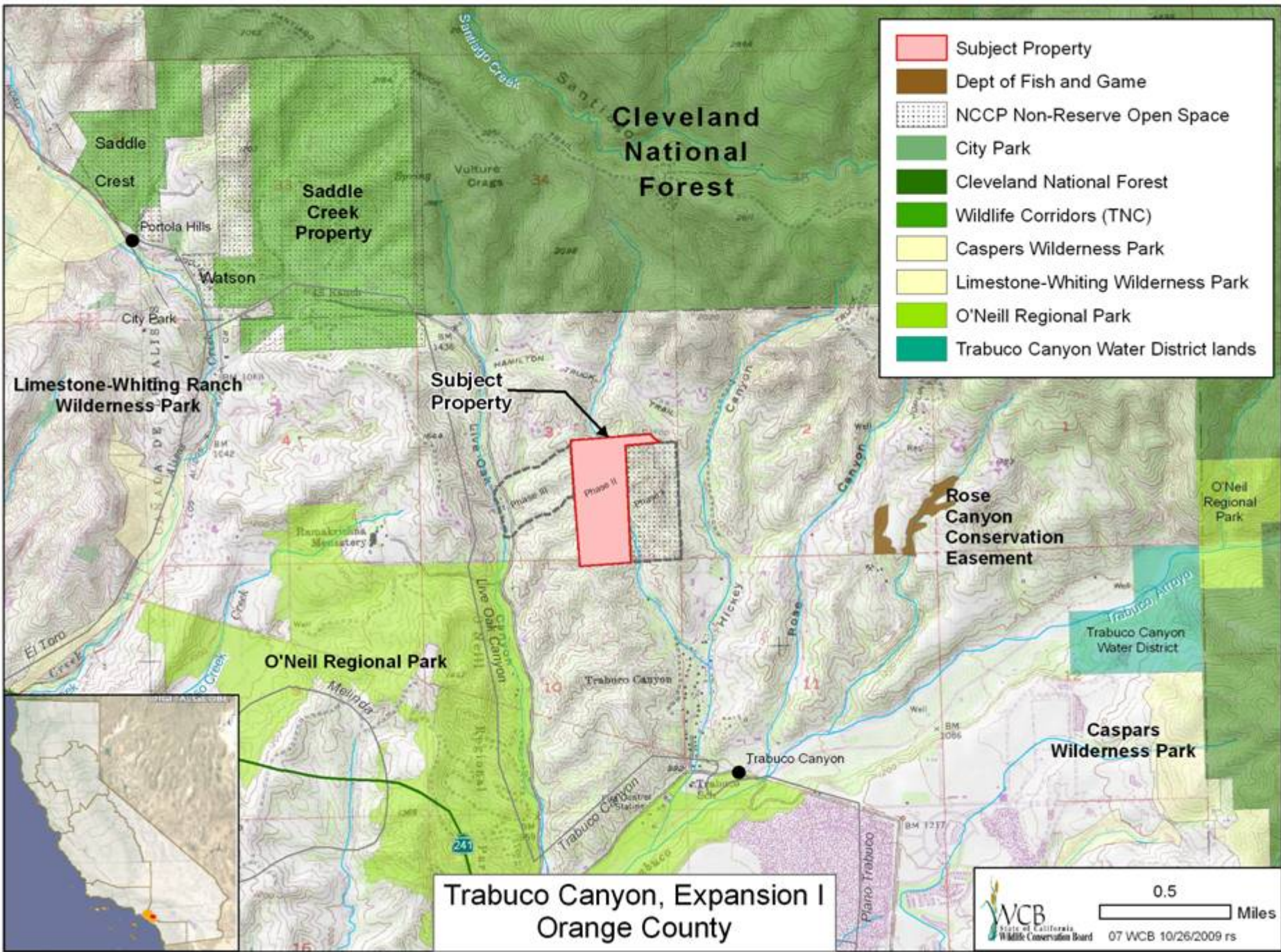


View for the northeast on Ballinger's parcels.

6 Willow Hole Conservation Area Riverside County



View looking north on the Ballinger's parcel with wind turbines in the distance.



- Subject Property
- Dept of Fish and Game
- NCCP Non-Reserve Open Space
- City Park
- Cleveland National Forest
- Wildlife Corridors (TNC)
- Caspers Wilderness Park
- Limestone-Whiting Wilderness Park
- O'Neil Regional Park
- Trabuco Canyon Water District lands

**Trabuco Canyon, Expansion I
Orange County**

0.5 Miles

7 Trabuco Canyon, Expansion 1 Orange County



Ridgeline of Property

7 Trabuco Canyon, Expansion 1 Orange County



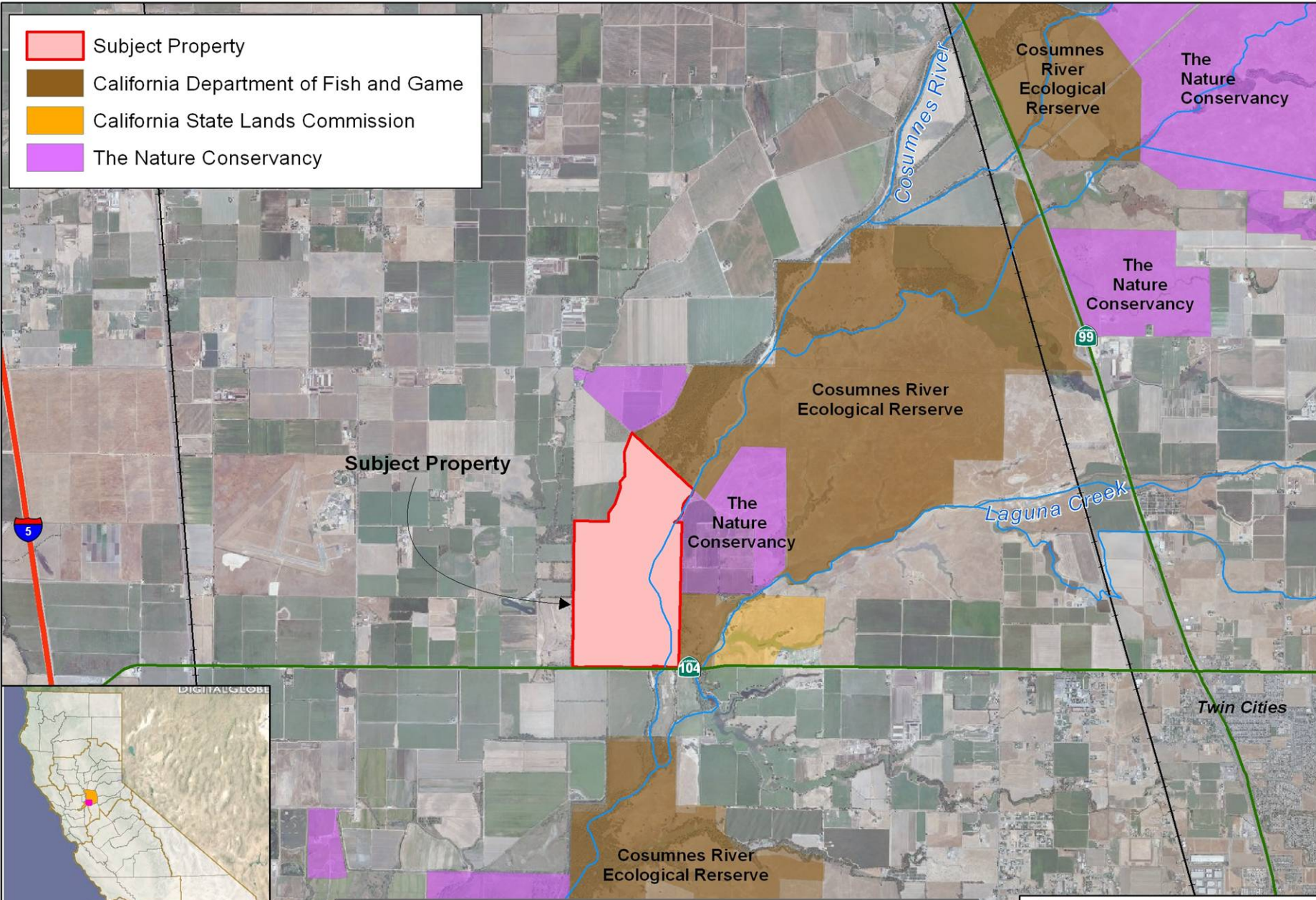
Typical vegetation found on property

7 Trabuco Canyon, Expansion 1 Orange County



California Gnatcatcher

- Subject Property
- California Department of Fish and Game
- California State Lands Commission
- The Nature Conservancy



Cosumnes River Wildlife Area - Oneto/Denier Property
Sacramento County

0.5
Miles

08 WCB 10/26/2009 rs

8 Cosumnes River Wildlife Area – Oneto/Denier Property Sacramento County



Representative Valley Oak

8 Cosumnes River Wildlife Area – Oneto/Denier Property Sacramento County



Cosumnes River Riparian Habitat

8 Cosumnes River Wildlife Area – Oneto/Denier Property Sacramento County



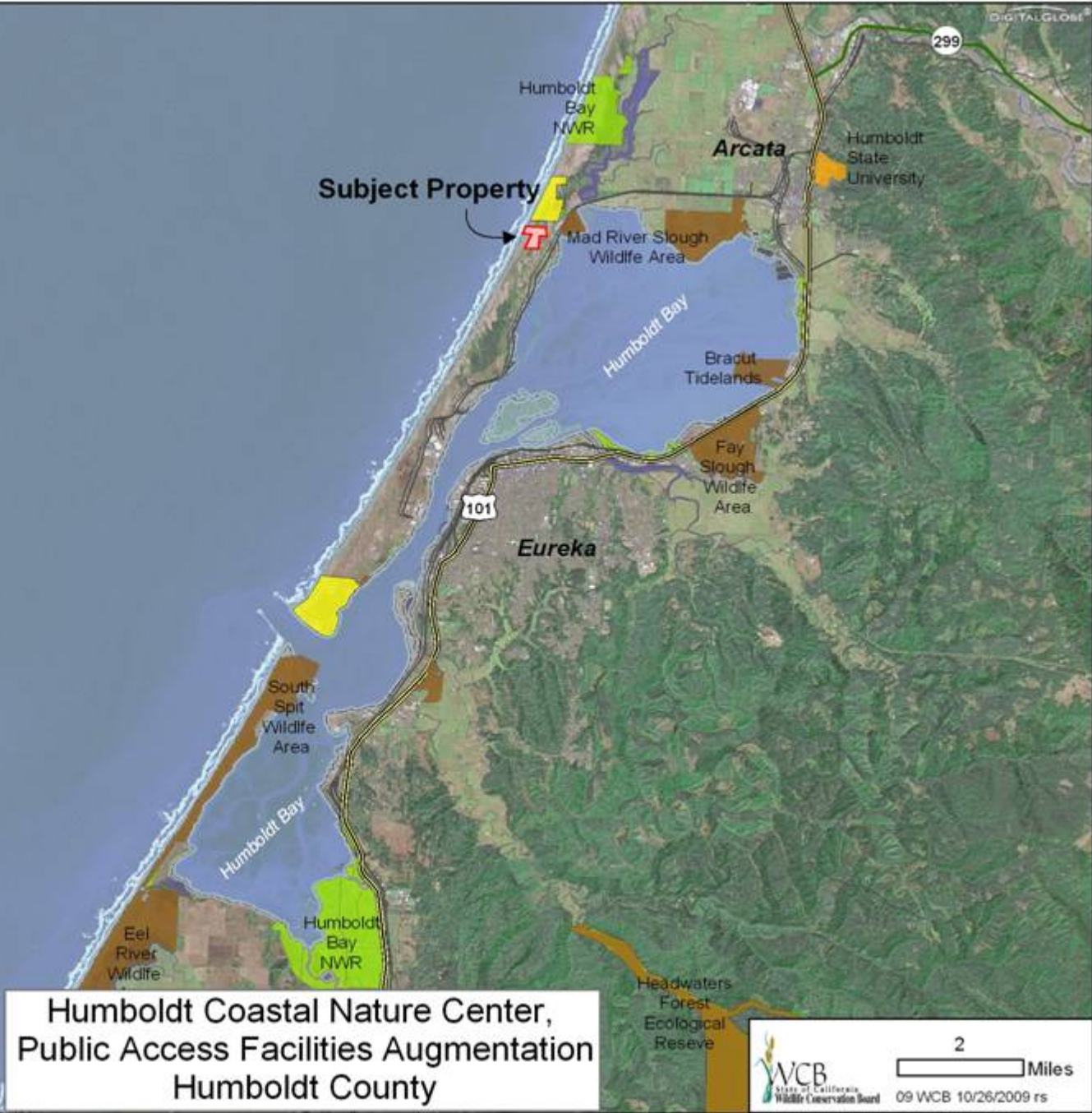
Aerial of Cosumnes River Preserve

8 Cosumnes River Wildlife Area – Oneto/Denier Property Sacramento County



Close up of Denier and Oneto II properties in April of 2006 showing levee breach

- Subject Property
- Dept. of Fish and Game
- Bureau of Land Management
- CA State Academic Institution
- US Fish and Wildlife Service



**Humboldt Coastal Nature Center,
Public Access Facilities Augmentation
Humboldt County**

9 Humboldt Coastal Nature Center, Public Access Facilities Augmentation Humboldt County



Humboldt Coastal Nature Center, current conditions.

Roofline will be extended to the south (left) to accommodate public restrooms.

9 Humboldt Coastal Nature Center, Public Access Facilities Augmentation Humboldt County



Rearview of Nature Center.

Restrooms will be located in hillside adjacent to current facility.

9 Humboldt Coastal Nature Center, Public Access Facilities Augmentation Humboldt County

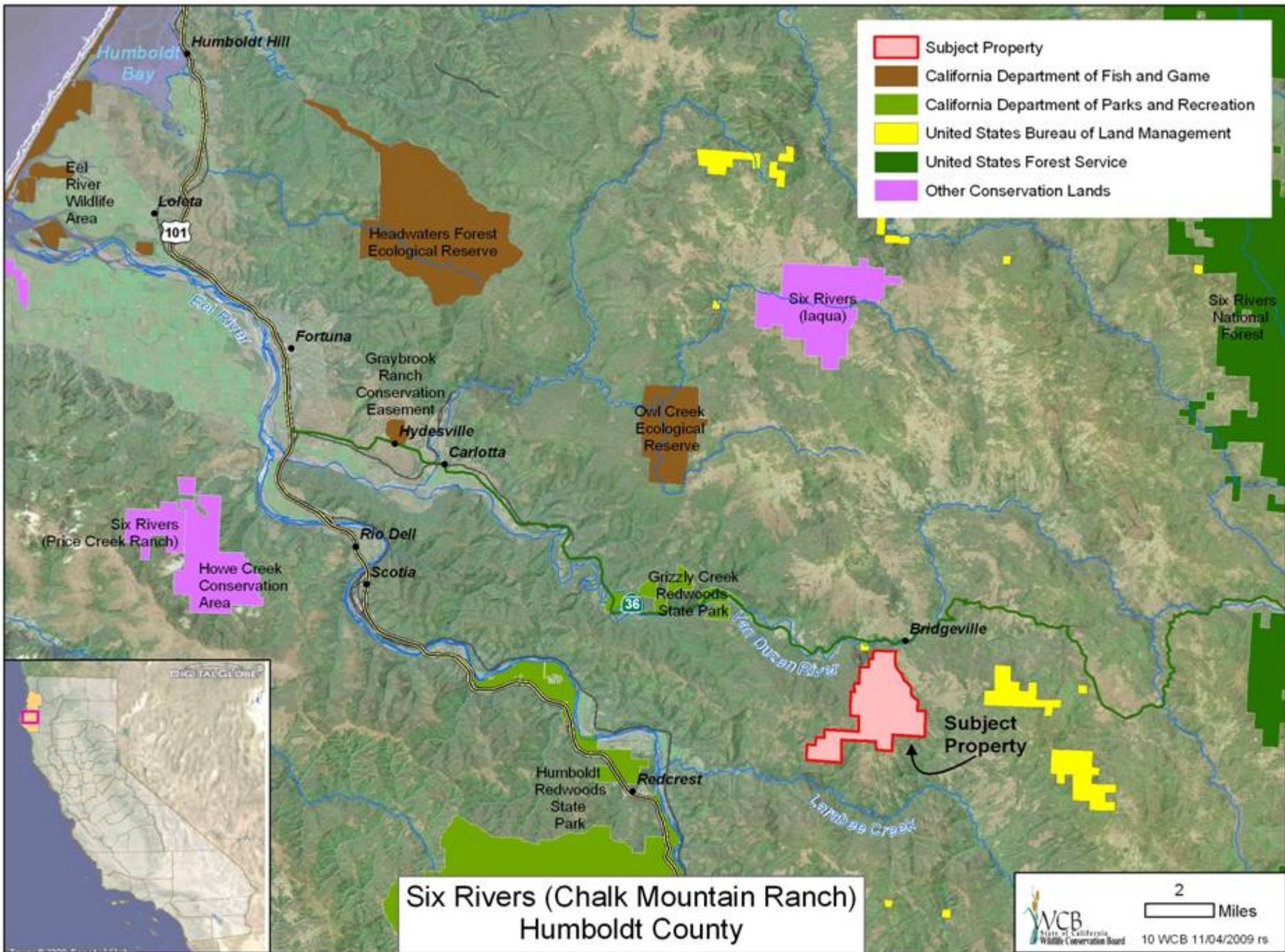


View from cupola on top of Nature Center overlooking where restrooms will be added (lower portion of picture) and where parking lot improvements will be made for staff.

9 Humboldt Coastal Nature Center, Public Access Facilities Augmentation Humboldt County



Downhill view from Nature Center where a public parking area will be located (flat area to right of current sign).



Six Rivers (Chalk Mountain Ranch)
Humboldt County

10 Six Rivers (Chalk Mountain Ranch) Humboldt County



*“Grandpa’s Grove”, commercial timber stand
in central region of property.*

10 Six Rivers (Chalk Mountain Ranch) Humboldt County

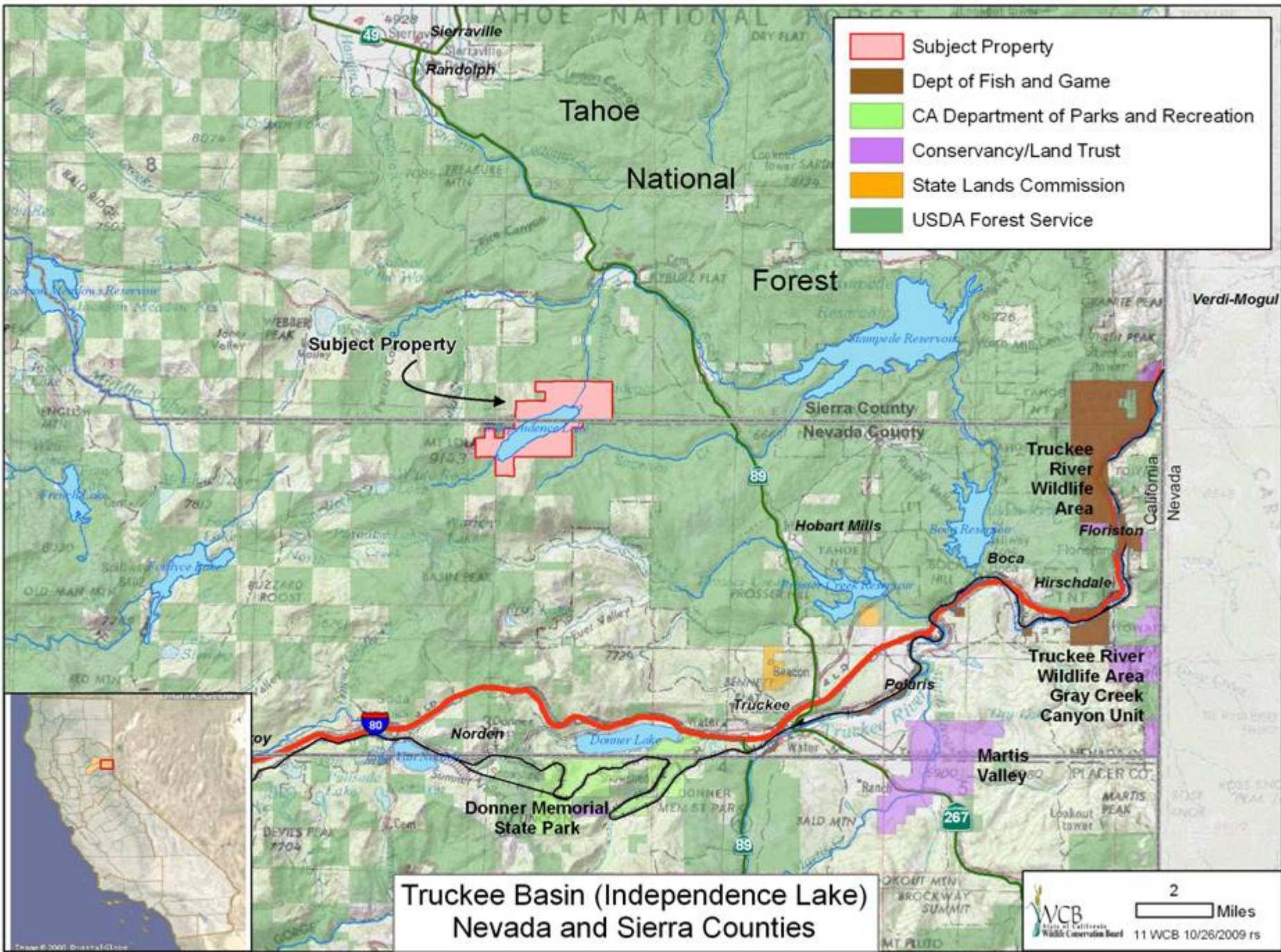


Forest and rangeland, view to north.

10 Six Rivers (Chalk Mountain Ranch) Humboldt County



Blacktail doe on southern portion of property.



11 Truckee Basin (Independence Lake) Nevada and Sierra Counties



Representative Meadow

11 Truckee Basin (Independence Lake) Nevada and Sierra Counties



Representative View - Lake and Forest

11 Truckee Basin (Independence Lake) Nevada and Sierra Counties



Toward Mount Lola

11 Truckee Basin (Independence Lake) Nevada and Sierra Counties

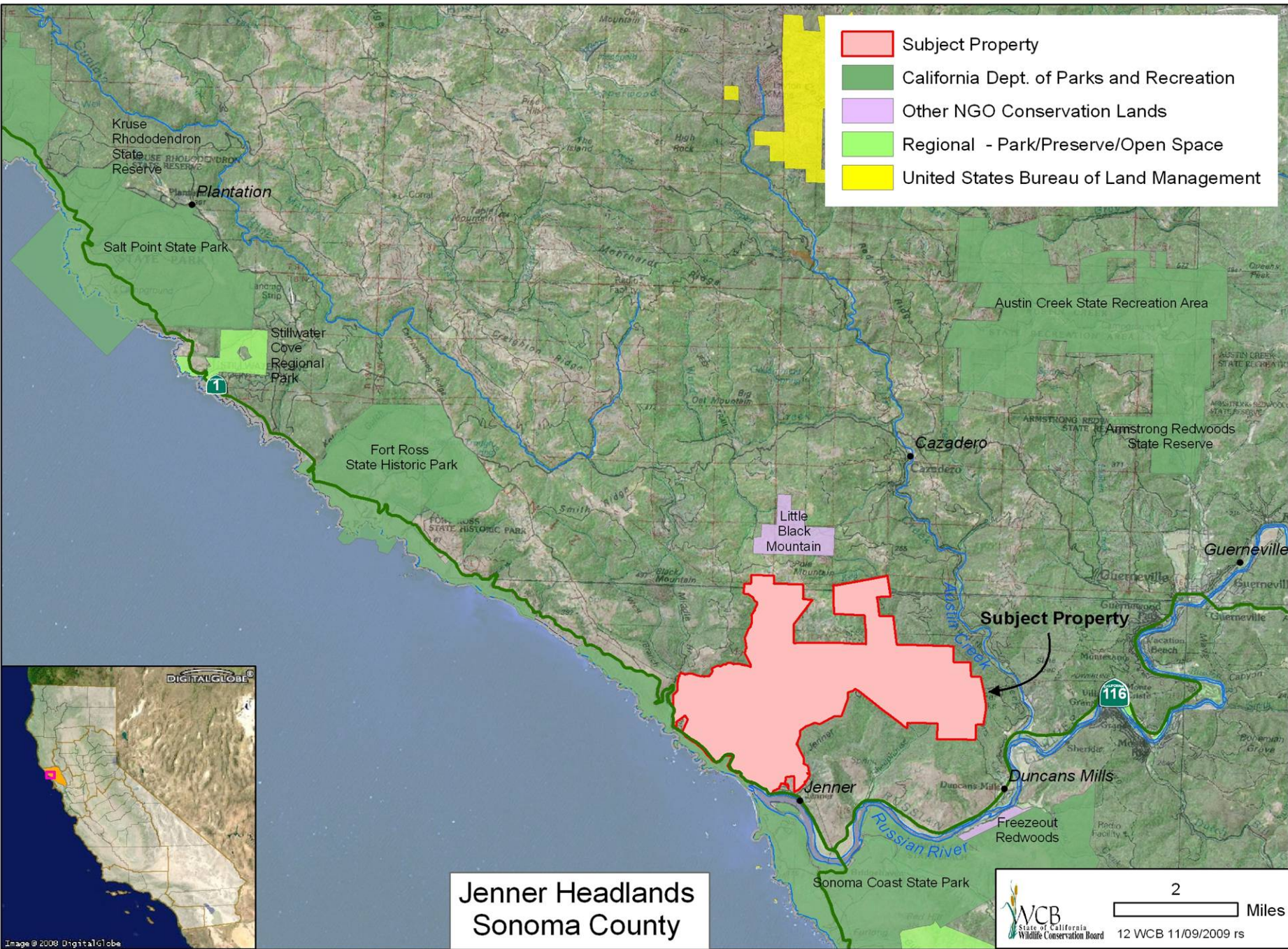


Original Lodge – c. 1910

11 Truckee Basin (Independence Lake) Nevada and Sierra Counties



Cabin



12 Jenner Headlands Sonoma County



View to the south toward Sonoma Coast State Beach,
Bodega Head and Point Reyes National Seashore.

12 Jenner Headlands Sonoma County



Forests on the property include coastal redwood and Douglas fir mixed forestland.

12 Jenner Headlands Sonoma County



Sheephouse Creek on the property is one of three reintroduction creeks in Sonoma County for DFG's captive Coho salmon broodstock program.

12 Jenner Headlands Sonoma County



Russian Gulch is another of three anadromous fish-bearing streams on the Property.

12 Jenner Headlands Sonoma County

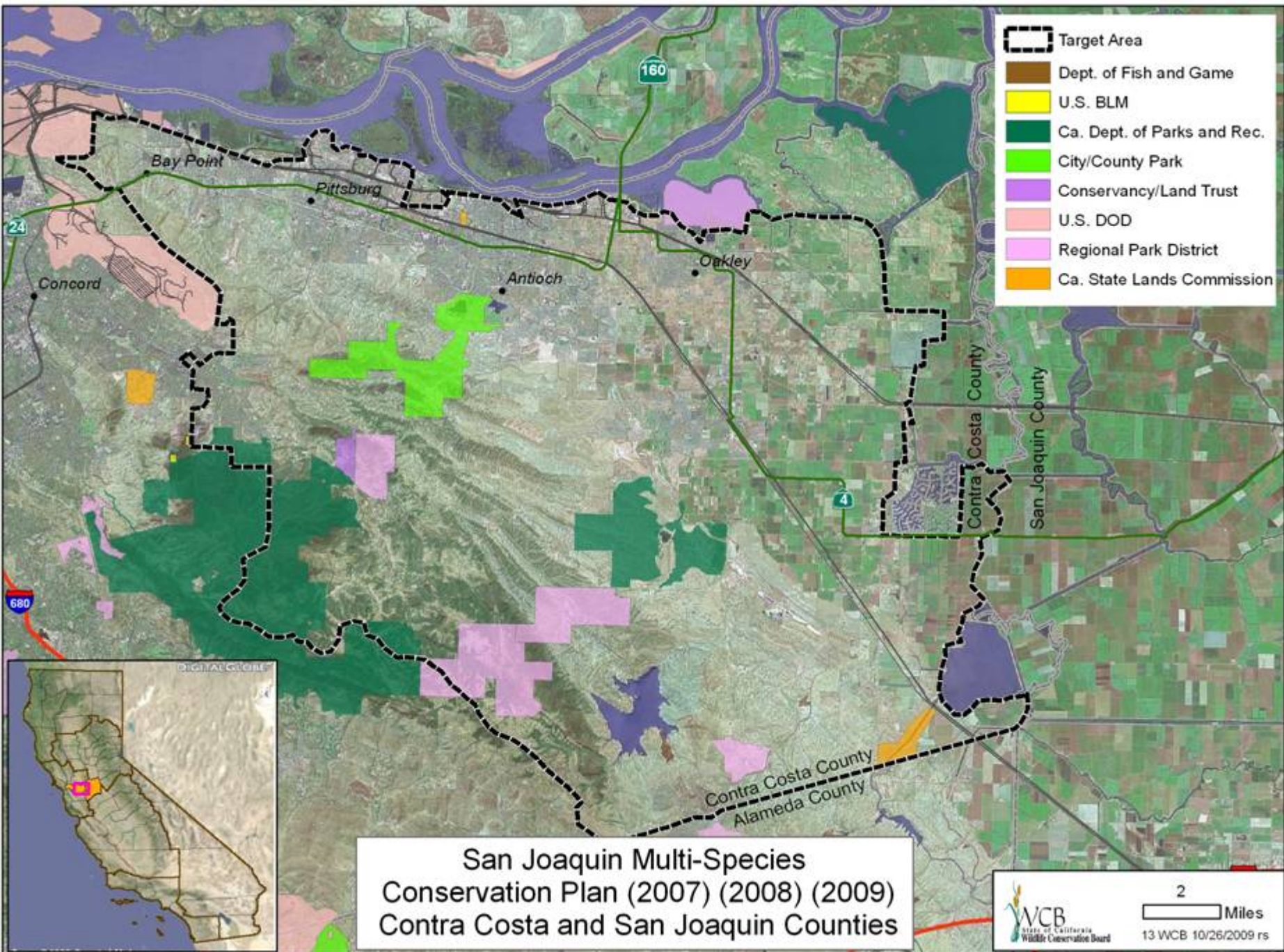


The grassland portion of the property borders Sonoma Coast State Park.

12 Jenner Headlands Sonoma County



View southwest toward Goat Rock.



San Joaquin Multi-Species
 Conservation Plan (2007) (2008) (2009)
 Contra Costa and San Joaquin Counties

13 San Joaquin Multi-Species Conservation Plan (2007), (2008), (2009) San Joaquin and Contra Costa Counties



Pond and alkali wetland found on target properties.

13 San Joaquin Multi-Species Conservation Plan (2007), (2008), (2009) San Joaquin and Contra Costa Counties



Aerial view of target area.

13 San Joaquin Multi-Species Conservation Plan
(2007), (2008), (2009)
San Joaquin and Contra Costa Counties

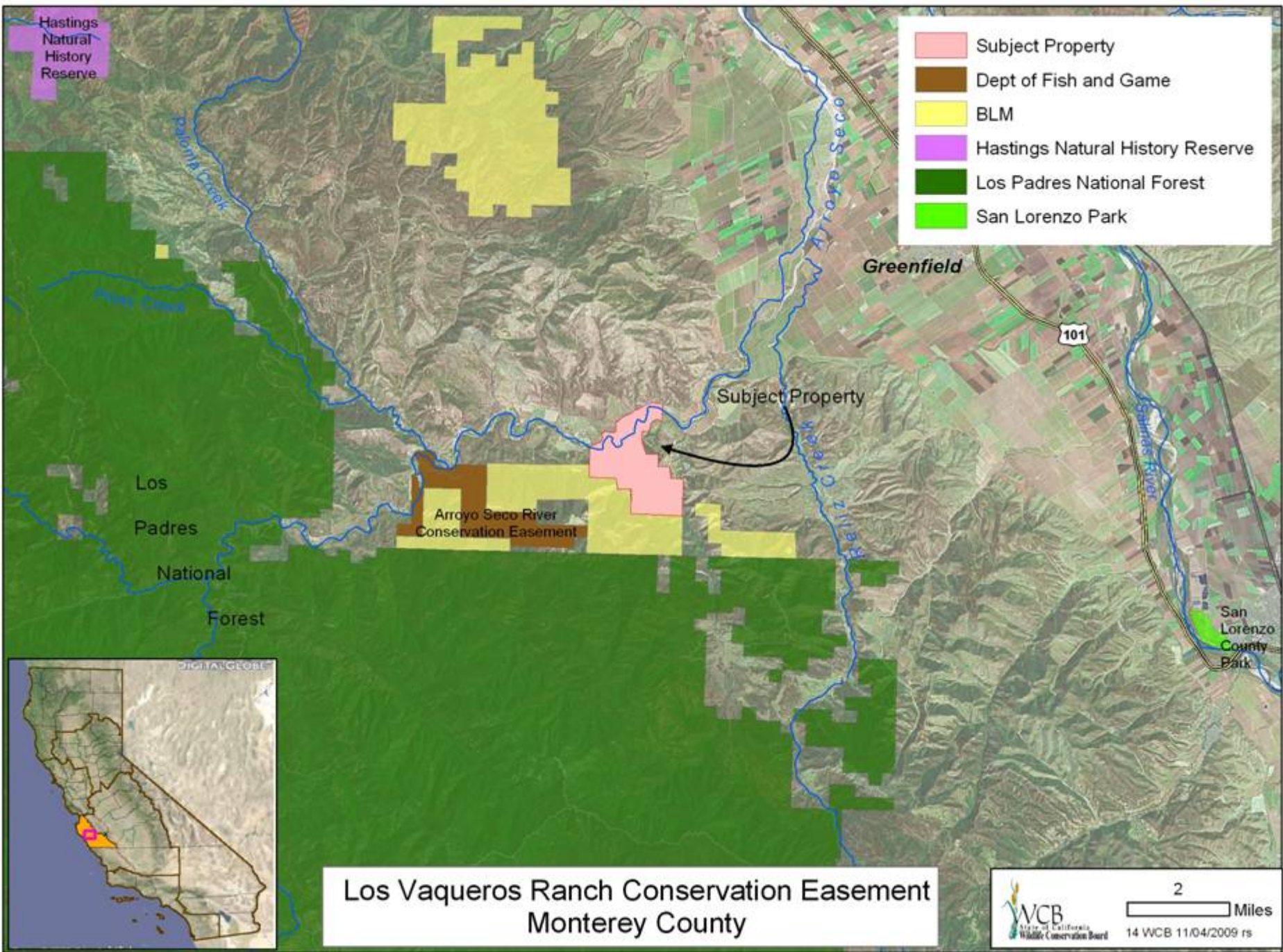


Burrowing Owl.

13 San Joaquin Multi-Species Conservation Plan (2007), (2008), (2009) San Joaquin and Contra Costa Counties



Example of topography found on property.



Hastings
Natural
History
Reserve

- Subject Property
- Dept of Fish and Game
- BLM
- Hastings Natural History Reserve
- Los Padres National Forest
- San Lorenzo Park

Greenfield

101

Subject Property

Los
Padres
National
Forest

Arroyo Seco River
Conservation Easement

San
Lorenzo
County
Park



**Los Vaqueros Ranch Conservation Easement
Monterey County**



2 Miles
14 WCB 11/04/2009 rs

14 Los Vaqueros Ranch Conservation Easement Monterey County



14 Los Vaqueros Ranch Conservation Easement Monterey County



14 Los Vaqueros Ranch Conservation Easement Monterey County



14 Los Vaqueros Ranch Conservation Easement Monterey County

