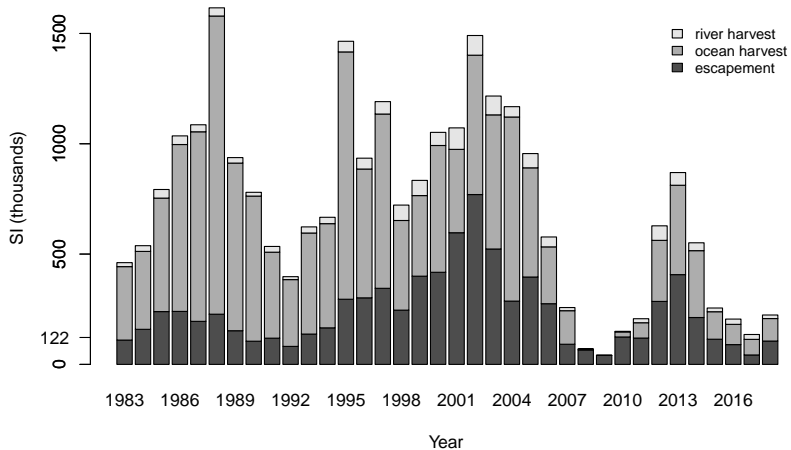
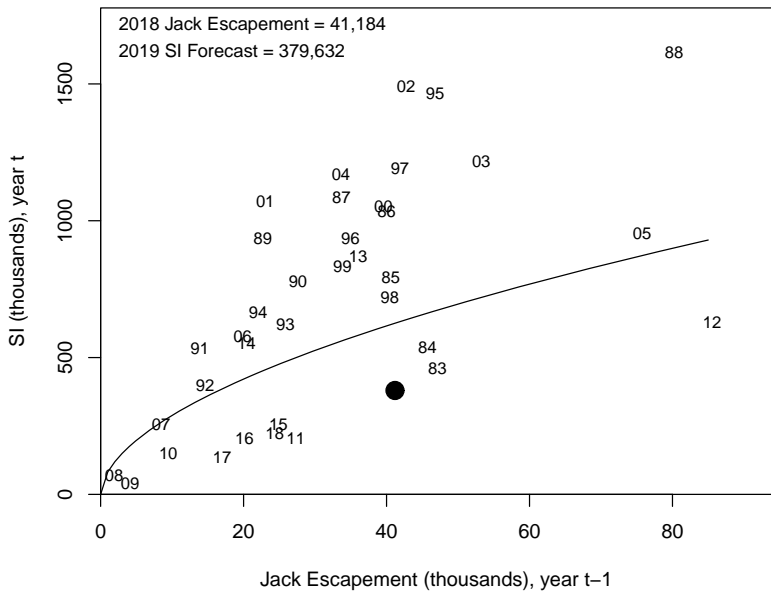


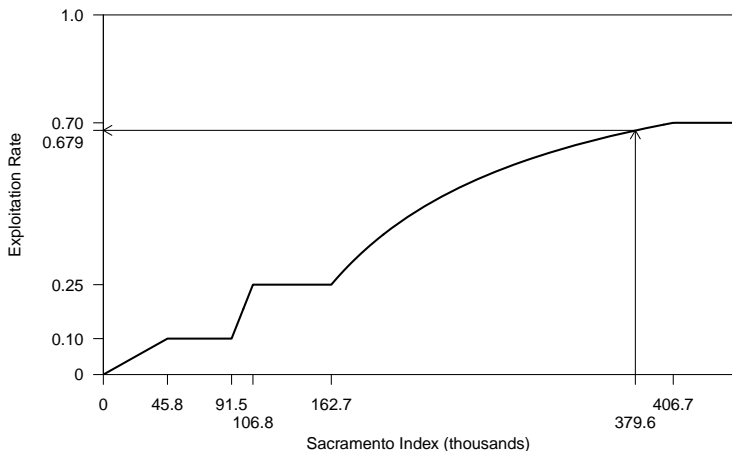
2018 Sacramento Index (SI): 223,854



2019 SI forecast: 379,632

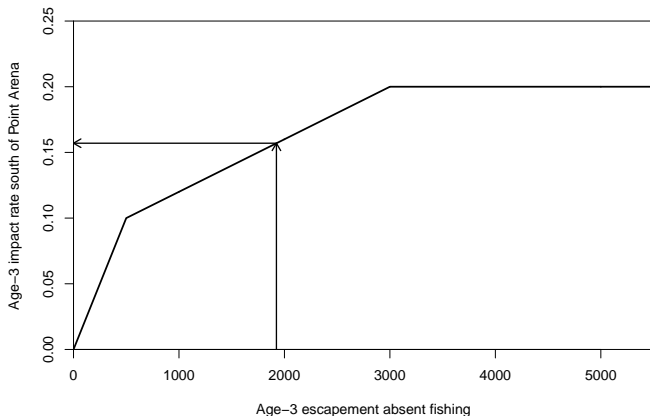


2019 SRFC management



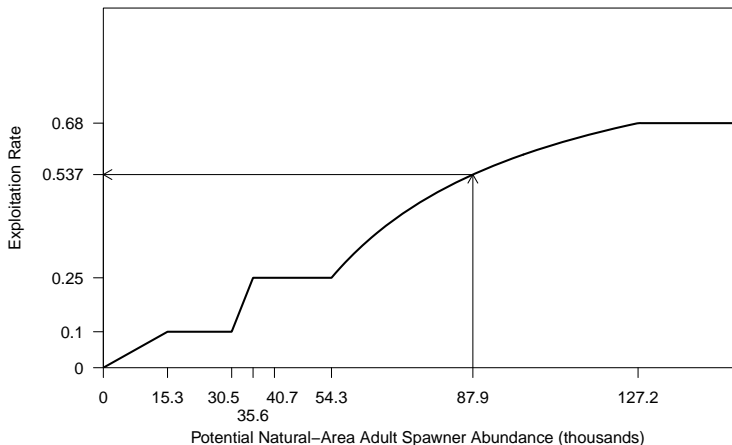
- ▶ 2019 forecast higher than 2018 forecast
- ▶ Must target an escapement of at least 122,000 (67.9% exploitation rate)
- ▶ 2018 regs: preliminary escapement prediction of 230,500
- ▶ May constrain 2019 fisheries

2019 winter Chinook management



- ▶ New control rule first used in 2018
- ▶ Abundance forecast: 1,924 (larger than 2018)
- ▶ Maximum allowable age-3 impact rate: 15.7%
- ▶ 2018 regs: preliminary prediction of 9.1%
- ▶ Likely to constrain 2019 fisheries south of Point Arena

2019 KRFC management



- ▶ Potential spawner abundance forecast: 87,893
- ▶ Must target an escapement of at least 40,700 (53.7% exploitation rate)

2019 KRFC management, contd.

- ▶ 2018 regs:
 - ▶ Tribal allocation: 50% of total harvest
 - ▶ River recreational allocation: 19.3% of non-tribal harvest
 - ▶ Natural-area adult spawners prediction: 58,700
 - ▶ Exploitation Rate: 33.2%

- ▶ Could constrain 2019 fisheries south of Cape Falcon, OR

2019 California Coastal Chinook

- ▶ Max allowable KRFC age-4 ocean harvest rate of 16%
- ▶ 2018 fisheries: preliminary prediction of 10.2%
- ▶ Could constrain 2019 fisheries