

# Precipitation Data from PRISM climate models

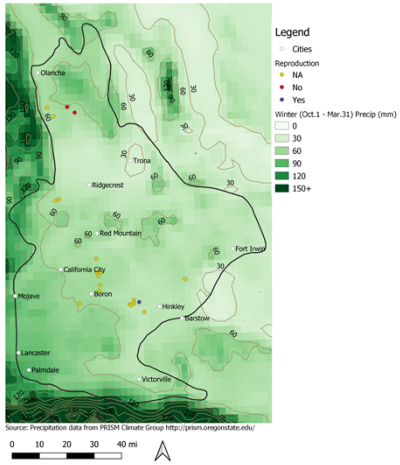


# What is PRISM?

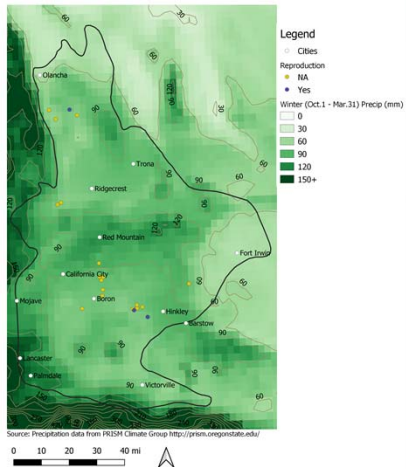
- Climate models developed & hosted by Oregon State University
- Produces spatial maps and data of climate data in the U.S. including:
  - 30-year averages of precipitation and temperature (800 m resolution)
  - Daily and monthly values for precipitation and temperature for dates 6+months old (4 km resolution)
  - Preliminary data for most recent 6 months (4 km resolution)
  - Comparisons of long-term conditions
  - Some data goes as far back as 1895 (but complete set is for as far back as 1981)

# PRISM and MGS

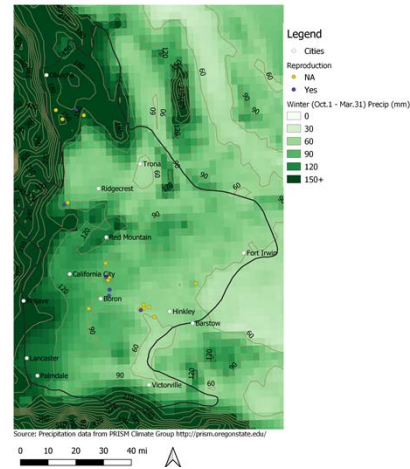
MGS 2014 Reproduction



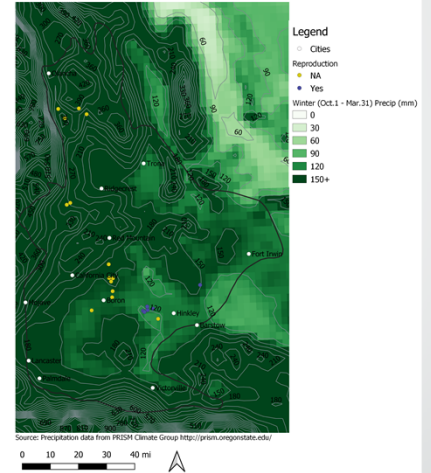
MGS 2015 Reproduction



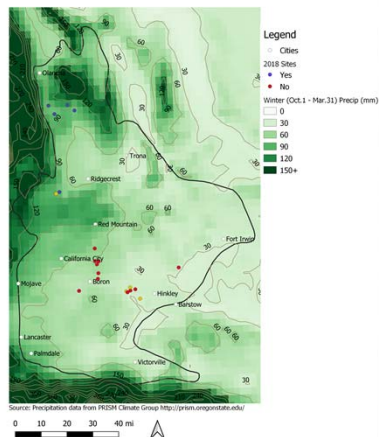
MGS 2016 Reproduction



MGS 2017 Reproduction

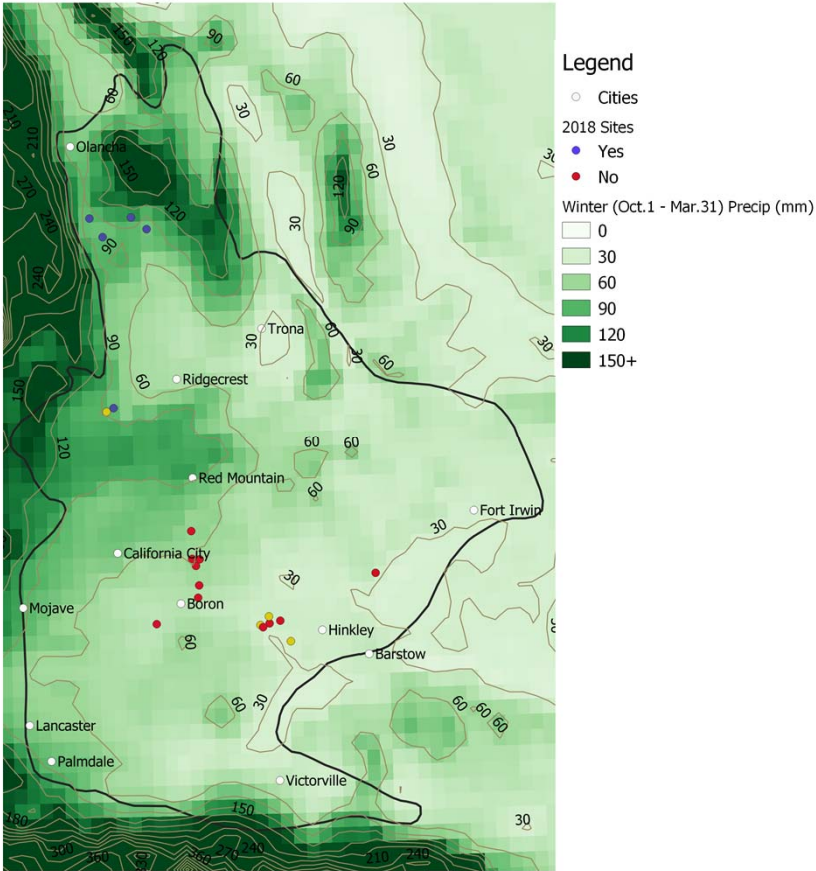


MGS 2018 Reproduction

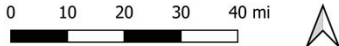


# Close-Up

MGS 2018 Reproduction



Source: Precipitation data from PRISM Climate Group <http://prism.oregonstate.edu/>



# PRISM Web Tool

**Location**

State & County: California Inyo

Coordinates: Latitude: 36.073938 Longitude: -117.8019828 Elevation: 1491m (4892ft) [Zoom to location](#)

**Data Settings**

30-year normals, 1981-2010 (monthly and annual)  
Resolution:  4km  800m

Annual values  
start: 2008 end: 2017

Single month values  
start: 2010 end: 2019  
January

Monthly values  
start: October 2017  
end: March 2018

Daily values  
start: 22 July 2017  
end: 22 July 2018

Data Stability: **stable (unlikely to change)**

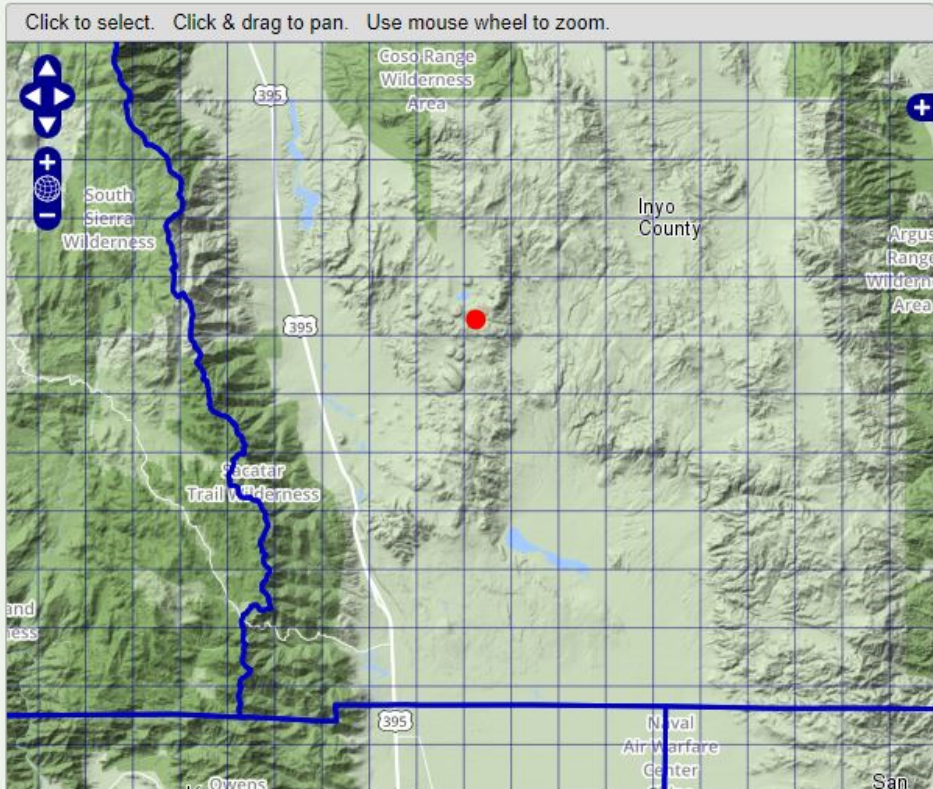
Units:  English  SI (metric)

Interpolate grid cell values (see text)

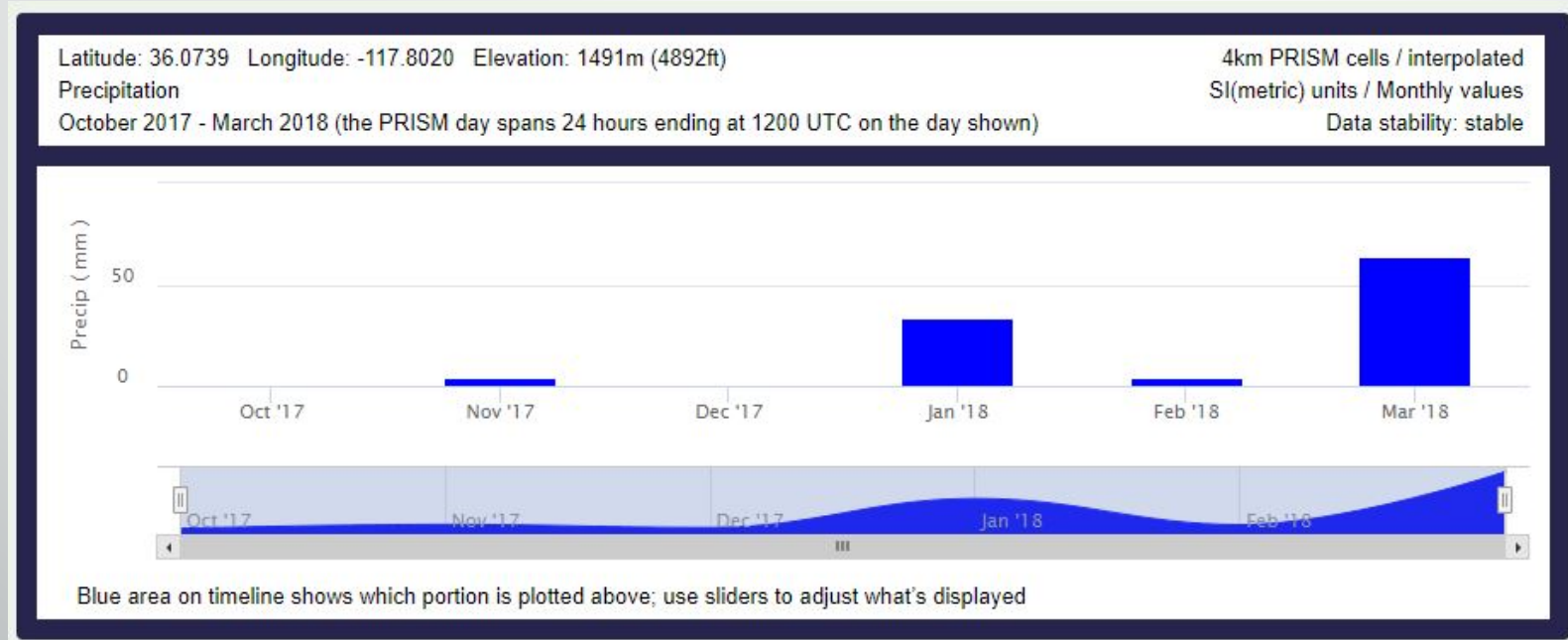
**Climate Variable**

<input checked="" type="checkbox"/> Precipitation	<input type="checkbox"/> Mean dewpoint temp
<input type="checkbox"/> Minimum temp	<input type="checkbox"/> Minimum VPD
<input type="checkbox"/> Mean temp	<input type="checkbox"/> Maximum VPD
<input type="checkbox"/> Maximum temp	

Click to select. Click & drag to pan. Use mouse wheel to zoom.



# Results on Webtool



# Thoughts on Field Checking?

- PRISM is well accepted in the research/modeling community
- HOWEVER, field checking can't hurt. Thoughts?

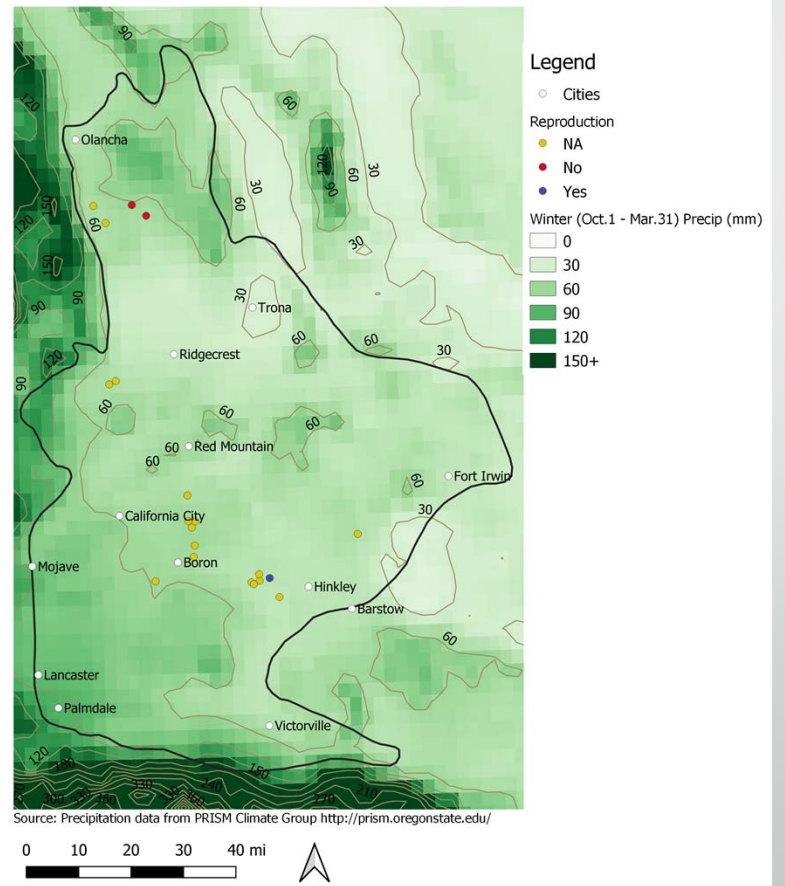
# Website

- <http://prism.oregonstate.edu/explorer/>



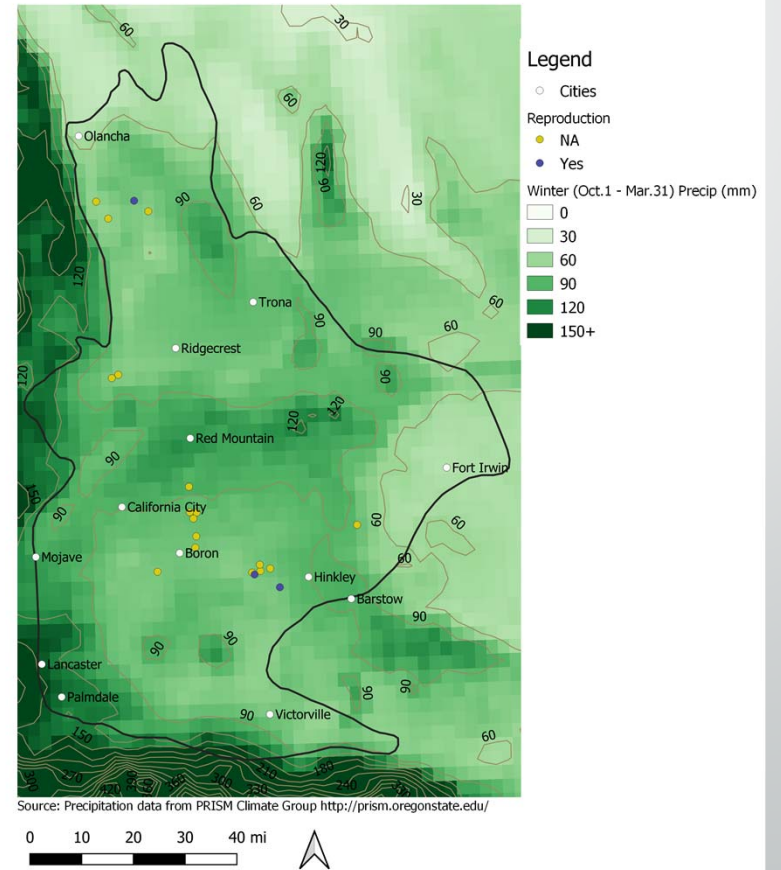
2014

### MGS 2014 Reproduction



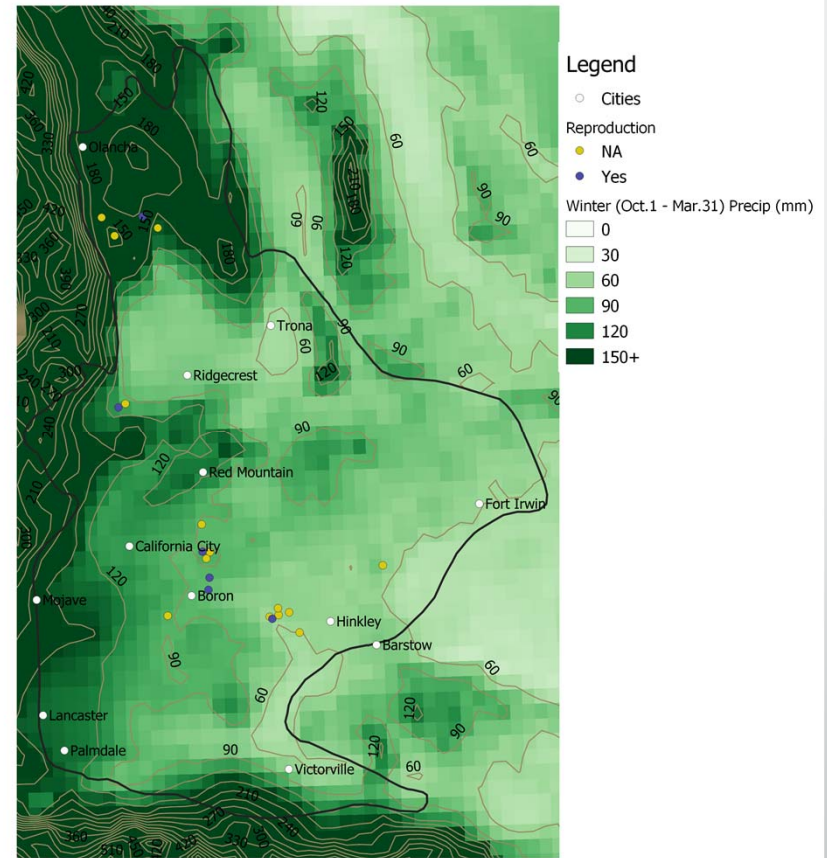
2015

MGS 2015 Reproduction

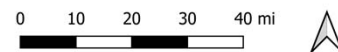


2016

### MGS 2016 Reproduction



Source: Precipitation data from PRISM Climate Group <http://prism.oregonstate.edu/>



2017

MGS 2017 Reproduction

