

Memorandum

Date: 12/21/2017

To: Sarah Mussulman
Senior Environmental Scientist
Department of Fish and Wildlife
North Central Region

From: Mitch Lockhart
Environmental Scientist
Department of Fish and Wildlife
North Central Region

Subject: Electrofishing Sample at Deer Creek at Ryan's Ranch Rd., El Dorado County, June 26th 2017

In May of 2017, CDFW received a tip from a concerned El Dorado County Fish and Game Commission member (FGC) that juvenile chinook salmon (*Oncorhynchus tshawytscha*) were present in Deer Creek, El Dorado County, a tributary to the Cosumnes River. The concern was that juvenile salmon might become stranded if flows dropped quickly.

On June 26, 2017, CDFW Environmental Scientist, Mitch Lockhart and two Scientific Aides sampled Deer Creek at Ryan's Ranch Road Crossing (Figure 1) using two Smith-Root backpack electrofishers.

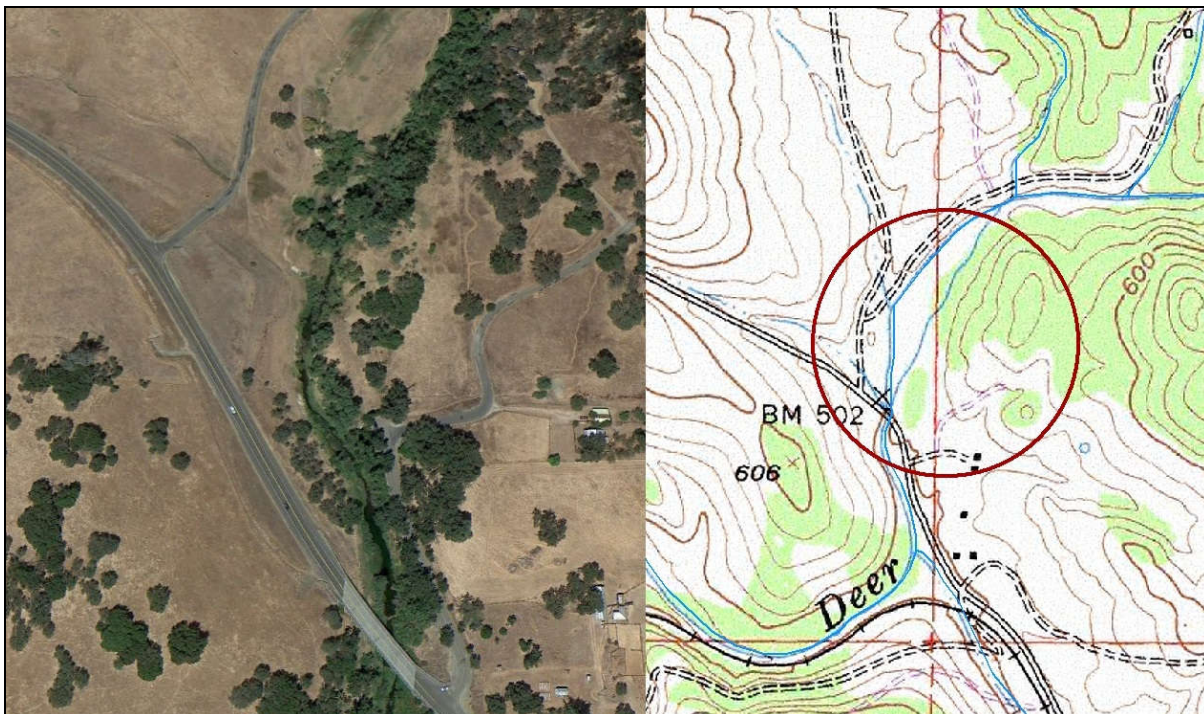


Figure 1: Deer Creek at Ryan's Ranch Road, El Dorado County (Google Map, retrieved December 2017)

All fish captured were identified, measured, and released at the point of capture. The following species were captured: Sacramento pikeminnow (*Ptychocheilus grandis*); Sacramento sucker (*Catostomus occidentalis*); sculpin (*Cottus spp.*); speckled dace (*Rhinichthys osculus*); and non-native sunfish (*Lepomis spp.*). The sampling data are summarized in Table 1.

No salmon were captured or observed during the survey. After reviewing capture data with the FGC member, it was determined that Sacramento pikeminnow were mistaken for juvenile chinook salmon.

Table 1: Fish data from Deer Creek at Ryan's Ranch Road Crossing, 26 June 2017.

Species	Total Length (mm)	Total Length (inch)
Sunfish spp	111	4.4
Sunfish spp	78	3.1
Pike Minnow	119	4.7
Pike Minnow	133	5.2
Pike Minnow	137	5.4
Pike Minnow	44	1.7
Pike Minnow	208	8.2
Pike Minnow	145	5.7
Pike Minnow	113	4.4
Pike Minnow	132	5.2
Sculpin spp	108	4.3
Sculpin spp	98	3.9
Speckled Dace	59	2.3
Speckled Dace	74	2.9
Speckled Dace	52	2.0
Sacramento Sucker	169	6.7
Sacramento Sucker	55	2.2
Sacramento Sucker	64	2.5