

Section 9814 – Northern Channel Islands

9814 Northern Channel Islands (GRA 8).....	544
9814.1 Response Summary Tables.....	549
9814.2 Geographic Response Strategies for Environmental Sensitive Sites.....	552
9814.2.1 GRA 8 Site Index.....	553
9814.3 Economic Sensitive Sites.....	614
9814.4 Shoreline Operational Divisions.....	615

9814 Northern Channel Islands (GRA 8)

The five northern Channel Islands (Anacapa, Santa Cruz, Santa Rosa, San Miguel and Santa Barbara) and the associated waters surrounding the islands pose significant challenges to spill response. This section will cover some of the general islands-wide issues that must be taken into consideration before any response operations are conducted on the islands. Due to the geographic proximity of Santa Barbara Island to Los Angeles and the corresponding proximity to Los Angeles County response resources, Santa Barbara Island has been included in ACP 5 – Section 9841. However, any response upon Santa Barbara Island must also take into consideration the following issues. The Santa Barbara Island sensitive site pages reference this document accordingly.

Description

The Channel Islands described here, and the surrounding one nautical miles of water are all part of the Channel Islands National Park (CINP) while the surrounding 6 nautical miles of water are part of the Channel Islands National Marine Sanctuary (CINMS). The State of California has jurisdiction over the living marine resources within 3 miles of the islands. CINP consists of 390 m² (half of which is under water) while the CINMS consists of a total of a 1,252-square-nautical-mile area of ocean surrounding the islands. Roughly 75% of Santa Cruz Island is owned and managed by the Nature Conservancy, a private, non-profit organization. The islands and the surrounding waters hold significant biological, archeological, and cultural resources that are at risk from oil spills. These resources include but are not limited to: federal and state listed endangered species, large sea bird and marine mammal populations, Native American archeological sites, and shipwrecks.

Logistics

The only way to gain access to the Channel Islands is by boat or aircraft. The nearest harbors are in the cities of Santa Barbara and Ventura; except for Santa Barbara Island (which is further south and is better accessed from Los Angeles/Long Beach Harbors). Conditions in the Santa Barbara Channel and around the islands are variable and the ocean is unforgiving. Only experienced skippers with vessels capable of withstanding severe weather are advised to make the cross-channel passage. Major shipping lanes lie between the islands and the mainland. Aircraft usage within or above the CINP is difficult due to complex take-off and landing conditions as well as biological restrictions (see Response Limitations and Bio-Security below for more information). Channel Islands Aviation, based out of the Camarillo Airport, is well equipped and experienced with flying and landing within the CINP. Aspen Helicopter is also familiar with the islands.

There are very few locations upon the islands that can serve as staging areas and even fewer opportunities for housing response personnel. If it is necessary to set up equipment staging or to house response personnel on the islands, it is essential that the incident command work closely with CINP representatives to establish appropriate locations.

Communications

Each island is equipped with at least 1 base station radio for communication with park headquarters and a marine band radio. Channel 16 on marine VHF is normally monitored during working and later hours. Each island ranger is equipped with a hand-held radio.

Response Limitations and Bio-security

Due to the special biological and cultural significance of the Channel Islands, mounting any response actions within the CINP and the CINMS presents unusual difficulties.

Each island presents its own limitations which can change based upon weather or time of the year. The specifics of these are listed below in the Island Specific Logistics section but there are some general restrictions and limitations that are island wide and always in force. Any variation from these restrictions must be done with express permission of CINP representative.

- Bio-security: the prevention of the introduction of non-native and/or invasive species onto the islands is of paramount importance. All response activities within the CINP must comply with the limitations and requirements of the Bio-security Protocols listed in the following section.
- Private aircraft may not land within park boundaries. All aircraft must maintain a minimum 1000-foot altitude above land and sea surfaces within the park.
- Fires and smoking are not permitted except in designated areas.
- Landing is not permitted on offshore rocks and islets.
- Collecting of plants, rocks, animals and artifacts is prohibited without a permit from the CINP.

Contacts

Each site summary lists the key contacts for response within the CINP and CINMS. Since the contact list for each site is the same, the list is reprinted here for easy access.

Channel Islands National Parks Contacts

Channel Islands National Park Office (8:30 am to 5 pm; 7 days a week)	805-658-5730
805-642-3862	
Dispatch	559-565-4221

Channel Islands National Marine Sanctuary Contacts

Channel Islands National Marine Sanctuary 24 Hour Emergency Cell	805-729-1271
Emergency Operations Manager Sean Hastings	805-705-1790
Sanctuary Superintendent Chris Mobley	805-259-6540
Sanctuary Deputy Superintendent of Programs Mike Murray	805-448-9971
Deputy Superintendent of Operations Todd Jacobs	805-689-8920
General Office	805-893-6437

Island Specific Logistics

Anacapa:

Aircraft Runways: None

Vessel Landing Areas: Landing Cove (north face of island on the east end). Caution-monitor sea conditions and depth before attempting approach.

Anchorage: Frenchy’s Cove (north face of island near West and Middle Anacapa isthmus).

Landing Cove (north face of island on the east end). East Fish Camp (south face of island on east end of Middle Anacapa).

Staging Areas: None

Personnel Lodging: Campground on East Anacapa

Roads & Vehicles: None

San Miguel:

Aircraft Runways: Primitive airstrip near ranger station at Lester Ranch.

Vessel Landing Areas: None

Anchorage: Cuyler Cove (north-center of island). Tyler Bight (southwest side island near Pt Bennett)

site boundary).
Staging Areas: None
Personnel Lodging: None
Roads & Vehicles: None

Santa Cruz:

Aircraft Runways: Several primitive airstrips around island (consult CIMP).
Vessel Landing Areas: Prisoners Harbor (Northeast face of center of island). Scorpion Harbor (Northeast end of island). Caution: monitor sea conditions and depth before attempting approach.
Anchorage: At least 2 dozen possible anchorages around the island. Most on the eastern half.
Staging Areas: Several possible staging areas (consult CIMP)
Personnel Lodging: Several campgrounds (consult CIMP)
Roads & Vehicles: Passenger vehicles, bulldozer, and tractor(s). Note: many roads impassable in wet conditions.

Santa Rosa:

Aircraft Runways: Primitive airstrip near ranger station near Water Canyon.
Vessel Landing Areas: Bechers Bay landing dock is on the northeast side of island near the ranger station. Caution: monitor sea conditions and depth before attempting approach.
Anchorage: Several possible anchorages around island (consult CIMP)
Staging Areas: Several possible staging areas (consult CIMP)
Personnel Lodging: Campground near runway.
Roads & Vehicles: Passenger vehicles and a tractor. Note many roads impassable in wet conditions.

Santa Barbara:

Aircraft Runways: None
Vessel Landing Areas: Landing Cove (northwest face of island) Caution: monitor sea conditions and depth before attempting approach.
Anchorage: Landing Cove (northwest face of island).
Staging Areas: None
Personnel Lodging: None
Roads & Vehicles: None

Biosecurity Protocols - Preventing the Introduction of Non-native Species

Background and Rationale

The Channel Islands National Park was established to conserve the rich biological ecosystems of five islands and nearby rocks and islets. The naturally small populations found on islands can be easily driven to extinction by new introductions and, therefore, islands are unusually vulnerable to the impacts of new invaders.

It is much more cost effective to prevent the arrival of introduced species than to attempt to eradicate after arrival. In many cases, it may be impossible to eliminate a pest once it has arrived.

Protocols:

Personal Gear -

- Maximum use of hard sided boxes. Any cargo packaged and stored overnight must be stored in a hard-sided box. Food may only be stored in containers that are totally sealed (i.e. hard-sided box with a tight-fitting top and no holes). The park has purchased several plastic boxes with lids that can be used by anybody traveling on park boats or flights.
- Minimize use of megabags. Megabags need to be shaken out prior to each loading. They

need to be clean. Megabags should never be loaded except immediately prior to being slung onto a boat. No supplies left in a megabag overnight will be loaded onto a boat without first unloading and inspecting all of the gear.

- No corrugated cardboard boxes may be used to transport food. No corrugated cardboard boxes that are second-hand use (i.e. banana boxes) may be used for any reason.
- All other corrugated cardboard is discouraged. However, items (not food) in original cardboard packing (preferably sealed) may be used. The park will assess the level of risk that is posed by new boxes.
- Personal gear should be stored in clean, pest-free conditions at home. Gear should be cleaned and packed. Boots, sleeping bags, tents, nets should be cleaned prior to packing.
- All footwear, clothing, and gear (especially Velcro, shoelaces, cuffs, and boot lugs) should be clean and inspected for seeds and soil before departing for the islands, when boarding boats, and when moving between islands.

Equipment and Supplies -

- Equipment (large and small) should be stored and transported in a manner which prevents the attraction or transport of seeds, invertebrates, vertebrates and pathogens. Wherever possible, gear should be loaded into, stored and transported in containers with tight fitting lids that can prevent access by mobile species such as invertebrates and vertebrates (such as rodents). Corrugated cardboard boxes should be avoided to transport equipment and gear as the corrugations provide hiding places for invertebrates.
- Gear and equipment should NOT be left or stored where it is at risk for attracting and harboring potential non-native species prior to departing. For example, leaving large equipment in the open is a dangerous practice; it provides cover and food for rodents and insects. Gear that is left out in the open may also be exposed to potential weed seeds blown around or carried by other species. Types of safe storage units include containers with tight fitting lids, conex boxes, inside park buildings, or freezer storage.
- During the loading and unloading process all containers used in transport (e.g. dumpsters) should be cleaned of any item that may have spilled, especially foodstuffs, plant materials and soil. This practice will reduce the risk of attracting insects, rodents or other pest species.

Lumber and Wood Products -

- Lumber should only be used if it is clean, new, processed lumber from California. CAUTION: California Pine could contain blister rust or pitch canker and California Oaks could have the pathogen that causes Sudden Oak Death. All lumber must be certified pest and pathogen-free by either the distributor or the Park before use on the islands.
- Bundled lumber should be taken apart, inspected thoroughly, and restacked before leaving the mainland as it could harbor animals and/or seeds. The only exception is if a wholesale supplier has certified lumber pest and pathogen-free and it is tightly bundled and closely packed. Ideally, lumber should be inspected and cleaned before bundling.
- Under no circumstances should firewood or any unprocessed lumber with bark be allowed on the Channel Islands. Bark can provide habitat to many invertebrates and could carry pathogens such as pine blister rust, pitch pine canker, and Sudden Oak Death.
- All wood products should be processed and ideally treated, with no traces of bark or soil.

Waste -

- The buildup and disposal of waste is a significant issue on the Channel Islands. A waste management and disposal plan should be designed with CINP input and buyoff as early as possible in the response.

Dumpsters -

- Dumpsters are a large risk for transport of non-native animals. Whenever possible, dumpsters should not be used for personal food wastes. These should be taken off by the individual generating the waste.
- Dumpsters may only be used for construction and/or spill clean-up projects and will be in

a manner that they will not be used for food materials.

- Under no circumstances should dumpsters go to the islands with any garbage. The inside and outside, including the wheels, of the dumpsters should be pressure washed and treated with a disinfectant solution before leaving the mainland.
- Dumpsters must be inspected, emptied, and cleaned before departing the mainland for the islands.
- Under no circumstances should dumpsters move between islands.

Ground Vehicles -

- All vehicles should be washed and inspected prior to departure, especially earth moving and heavy equipment such as vehicles, tractors, shovels, and associated construction equipment. Equipment should be cleaned of soil and vegetative matter before being leaving their departure point, be this mainland or island.
- Heavy equipment (especially construction and earth moving equipment) should not be allowed to move between islands without: 1) being transported first to the mainland and cleaned; or 2) being cleaned on island prior to moving. In some situations, it may be necessary to clean equipment while at sea, but this should not be routine. Not only is this difficult and dangerous, the boat itself could become a vector for removed contaminants.
- All vehicles should be washed and inspected to ensure no transport of soil or vegetative matter. Using a hoist for washing is ideal; special attention should be paid to the undersides and insides of vehicles.

Vessels –

- Every boat shall have armed bait boxes that are checked monthly. Also, sticky traps should be deployed on every boat and changed monthly.
- Boat decks should be washed clean between cargo runs. No soil or other debris should remain on a boat.
- Any sign of rodents on a boat should be reported to the Superintendent.
- Any landing craft should be trapped intensively using a combination of bait boxes, snap traps, and sticky traps when a load is placed on the boat.
- No scrubbing of boat bottoms at the islands. Vessels should be cleaned in the harbor or offshore.

Planes -

- Planes should follow the same rules for containers and food storage as do boats.
- Planes should be maintained in a clean manner and routinely be swept out.
- The presence of yellow star-thistle at the landing strip at Santa Cruz Island poses a risk to the other islands. If a flight is to visit multiple islands, Santa Cruz should be the last island visited. An aircraft should never go from Santa Cruz Island to another park island.
- Planes and helicopter shall have their landing gear and passenger compartments of their aircraft cleaned and inspected prior to leaving the mainland.

Soil & Gravel -

- The transportation of soil and gravel from the mainland to islands is discouraged. If material is to be transferred, it must be freshly dug and transported to an island as soon as possible. Material that is held on the mainland must be tarped to protect from non-native seeds. The site where soil or gravel is deposited on an island will be mapped and provided to the Chief of Natural Resource for monitoring.

Education -

- Education is the best defense against the introduction of non-native plants and animals to the islands. Prior to responders departing for the islands, CINP personnel shall give an overview of the dangers and precautions necessary to mitigate those dangers to response personnel.

9814.1 Response Summary Tables

A summary of the response resources is listed by site and sub-strategy next.

Summary of ACP 4 GRA 8 Response Resources by Site and Sub-Strategy

Site	Site Name	Equipment	Sub-Type	Size/Unit	QTY/Unit
Sub-Strategy	PREVENTION OBJECTIVE OR CONDITION FOR DEPLOYMENT				
4-800	San Miguel Island: Point Bennett Area				
.1 -	No Onsite Options: Consider Offshore Containment/Recovery/ART				
4-806	San Miguel Island: East Simonton Cove				
.1 -	No Onsite Options: Consider Offshore Containment/Recovery/ART				
4-812	San Miguel Island: Cuyler Harbor				
.1 -	No Onsite Options: Consider Offshore Containment/Recovery/ART				
4-813	San Miguel Island: Prince Island				
.1 -	No Onsite Options: Consider Offshore Containment/Recovery/ART				
4-815	San Miguel Island: Bay Point				
.1 -	No Onsite Options: Consider Offshore Containment/Recovery/ART				
4-818	San Miguel Island: South Side				
.1 -	No Onsite Options: Consider Offshore Containment/Recovery/ART				
4-820	Santa Rosa Island: South West Beaches				
.1 -	No Onsite Options: Consider Offshore Containment/Recovery/ART				
4-824	Santa Rosa Island: North Area				
.1 -	Shoreline Pre-Clean: Resource Specialist Supervision Required				
	Staff				5
4-826	Santa Rosa Island: Arlington Canyon Lagoon				
.1 -	No Onsite Options: Consider Offshore Containment/Recovery/ART				
4-829	Santa Rosa Island: Skunk Point Area				
.1 -	No Onsite Options: Consider Offshore Containment/Recovery/ART				
4-834	Santa Rosa Island: Lagoon (East Side)				
.1 -	Exclude Oil				
	stakes				24
	Staff				5
	Boom	Sorbent Boom			240 feet
	Boom	Swamp Boom			240 feet
4-844	Santa Rosa Island: South East Beaches				
.1 -	No Onsite Options: Consider Offshore Containment/Recovery/ART				
4-850	Santa Cruz Island: Posa Anchorage Lagoon				
.1 -	Shoreline Pre-Clean: Resource Specialist Supervision Required				
	Staff				5
.2 -	Build Berm				
	Plastic sheeting	visqueen			1 Rolls
	Boom	Sorbent Boom			240 feet
	Sandbags				200
	Piping	6"			3
4-852	Santa Cruz Island: Christi Beach				
.1 -	Build Berm				
	Plastic sheeting	visqueen			1 Rolls
	Piping	6"			3
	Sandbags				200
	Boom	Sorbent Boom			240 feet
	Staff				5

<i>Site</i>	<i>Site Name</i>	PREVENTION OBJECTIVE OR CONDITION FOR DEPLOYMENT		
Sub-Strategy	Equipment	Sub-Type	Size/Unit	QTY/Unit
4-855	<i>Santa Cruz Island: Forney Cove</i>			
.1 -	Shoreline Pre-Clean: Resource Specialist Supervision Required			
	Staff			5
4-858	<i>Santa Cruz Island: Prisoners Harbor</i>			
.1 -	Shoreline Pre-Clean: Resource Specialist Supervision Required			
	Staff			5
4-864	<i>Santa Cruz Island: Scorpion Harbor Area</i>			
.1 -	Shoreline Pre-Clean: Resource Specialist Supervision Required			
	Staff			5
4-867	<i>Santa Cruz Island: Smuggler's Cove</i>			
.1 -	Shoreline Pre-Clean: Resource Specialist Supervision Required			
	Staff			5
4-878	<i>Santa Cruz Island: Punta Arena to Near Point</i>			
.1 -	Shoreline Pre-Clean: Resource Specialist Supervision Required			
	Staff			5
4-880	<i>Anacapa Island</i>			
.1 -	No Onsite Options: Consider Offshore Containment/Recovery/ART			

9814.2 Geographic Response Strategies for Environmental Sensitive Sites



Index Map – GRA 8, Channel Islands Environmental Sensitive Sites

9814.2.1 GRA 8 Site Index

Site #	Site Name	Page #
4-800-A	San Miguel Island: Point Bennett Area	554
4-806-A	San Miguel Island: East Simonton Cove	557
4-812-A	San Miguel Island: Cuyler Harbor	560
4-813-A	San Miguel Island: Prince Island	563
4-815-A	San Miguel Island: Bay Point	566
4-818-A	San Miguel Island: South Side	569
4-820-A	Santa Rosa Island: South West Beaches	572
4-824-A	Santa Rosa Island: North Area	575
4-826-A	Santa Rosa Island: Arlington Canyon Lagoon	578
4-829-A	Santa Rosa Island: Skunk Point Area	581
4-834-A	Santa Rosa Island: Lagoon (East Side)	584
4-844-A	Santa Rosa Island: South East Beaches	587
4-850-A	Santa Cruz Island: Posa Anchorage Lagoon	590
4-852-A	Santa Cruz Island: Christi Beach	593
4-855-A	Santa Cruz Island: Forney Cove	596
4-858-A	Santa Cruz Island: Prisoners Harbor	599
4-864-B	Santa Cruz Island: Scorpions Harbor Area	602
4-867-B	Santa Cruz Island: Smuggler's Cover	605
4-878-A	Santa Cruz Island: Punta Arena to Near Point	608
4-880-A	Anacapa Island	611

4-800-A Site Summary - San Miguel Island: Point Bennett Area**4-800-A****County :** Santa Barbara **ACP Division/Segment :** CI - A - S000**NOAA Chart :** 18720**Map Book :** NA**Decimal Degrees** 34.03 -120.45111**Site Description:**

This site extends from Tyler Bight to Otter Harbor Point. The Point Bennett area has vertical rock cliffs, exposed wave-cut platforms, and medium to coarse-grained sand beaches. This is a prime pinniped haul out, pupping and breeding area. This is also one of the largest seabird nesting areas in southern California. Castle Rock Island is a large exposed vertical rocks pinnacle offshore with many nesting seabirds. San Miguel Island Special Closure exists from Judith to Castle Rock. Judith Rock State Marine Reserve is located on the south side of this site. Richardson Rock State and Federal Marine Reserves are located farther to the northwest.

Nesting birds include western snowy plover (Mar-Sep), Brandt's cormorant (Feb-Aug), western gull (Mar-Sep), ashy storm petrel (Feb-Nov), pigeon guillemot (Mar-Aug), cassin's auklet (Mar-Sep), black oystercatcher (Mar-Sep), peregrine falcon, rhinoceros auklet (May-Sep), tufted puffin (Apr-Nov), pelagic cormorant (Mar-Sep), double-crested cormorant (Mar-Aug) and leach's storm-petrel (Feb-Oct). Marine mammals include harbor seal, northern fur seal, guadalupe fur seal, California and stellar sea lion, and southern sea otter.

Resources at Risk:*ESI and Habitat:* 5 Mixed sand and gravel beaches

3A Fine- to medium-grained sand beaches

2A Exposed wave-cut platforms in bedrock, mud, or clay

1A Exposed Rocky Shore

List of Resources at Risk:

	Resource Name	Status	Presence
Birds	Western snowy plover	FT	Year-round
Birds	seabirds		Year-round
Invertebrates	black abalone	FE	Year-round
Mammals	Southern sea otter	FT, SP	Year-round
Mammals	San Miguel Island fox	FE, SE	Year-round
Mammals	marine mammals		Year-round

FT-Federally Threatened, FE-Federally Endangered, FP-Federally Protected, SE-State Endangered, ST-State Threatened, SP -State Protected, SR-State Rare, SSC-Species of Special Concern, BGEPA-Bald and Golden Eagle Protection Act, SSSP-State Special Status Species

List of Key Contacts:

Type	Name/Title	Organization	Phone
C	/	Central Coast Archeological Information Center	(805) 893-2474
C	/	Native American Heritage Commission	(916) 373-3710
T	Becky Ota/Marine Conservation Manager	California Department of Fish & Wildlife, MPAs	(650) 631-6789
T	Steve Wertz/Senior Environmental Scientist	California Department of Fish and Wildlife, Marine	(562) 343-3808
T	/24hr	Channel Islands National Marine Sanctuary	(805) 729-1271
T	/Deputy Superintendent	Channel Islands National Marine Sanctuary	(805) 448-9971
T	/Sanctuary Superintendent	Channel Islands National Marine Sanctuary	(805) 259-6540
T	Operations Manager/Emergency	Channel Islands National Marine Sanctuary	(805) 705-1790
T	Superintendent of Operations/Deputy	Channel Islands National Marine Sanctuary	(805) 689-8920
T	/Dispatch	Channel Islands National Park	(559) 565-4221
T	/	US Fish and Wildlife Service, Federal T&E Species	(805) 644-1766

C – Cultural, Historic, Archaeological; E – Entry/Owner/Access; O – Other; S – Safety; T – Trustee; X – Exclusion or Security

Additional Site Summary Comments:

Western snowy plovers nest from Mar-Sep.

Concerns and Advice to Responders:

San Miguel Island is the northernmost and farthest west of the Channel Islands, lying 55 miles northwest of Ventura. More than 100,000 seals and sea lions breed, pup, and haul out on the island's 27 miles of isolated coastline. Large numbers of sea birds nest on San Miguel and on nearby Prince Island. Trustee agencies may not sanction onshore response activities. Refer to and comply with introductory section of 9814 before initiating any response activities.

Hazard and Restrictions:

Conditions in the Santa Barbara Channel and around the islands are variable and the ocean is unforgiving. Only experienced skippers with vessels capable of withstanding severe weather are advised to make the cross-channel passage. Major shipping lanes lie between the islands and the mainland.

Site Strategies:

Strategy: 4-800.1 Objective: No Onsite Options: Consider Offshore Containment/Recovery/ART

Strategy: There are no feasible onshore protection strategies for this area. Attempt to collect and/or disperse oil in offshore locations before it reaches the shoreline. Before initiating any response activities within the Channel Islands National Marine Sanctuary or the Channel Islands National Park, refer to and comply with the Channel Islands Introductory section 9814. Protect the Marine Protected Area (MPA) boundaries.

Table of Response Resources

Last Page Update

Logistics:

Directions: Only by boat (access by boat generally not practical) or aircraft. Closest harbors are Santa Barbara and Ventura. Channel Islands Aviation is located at Camarillo Airport and is able to fly and land on the islands. All access to the Channel Islands must be coordinated with National Parks and must follow biosecurity protocols. Refer to introductory section of 9814 for more information.

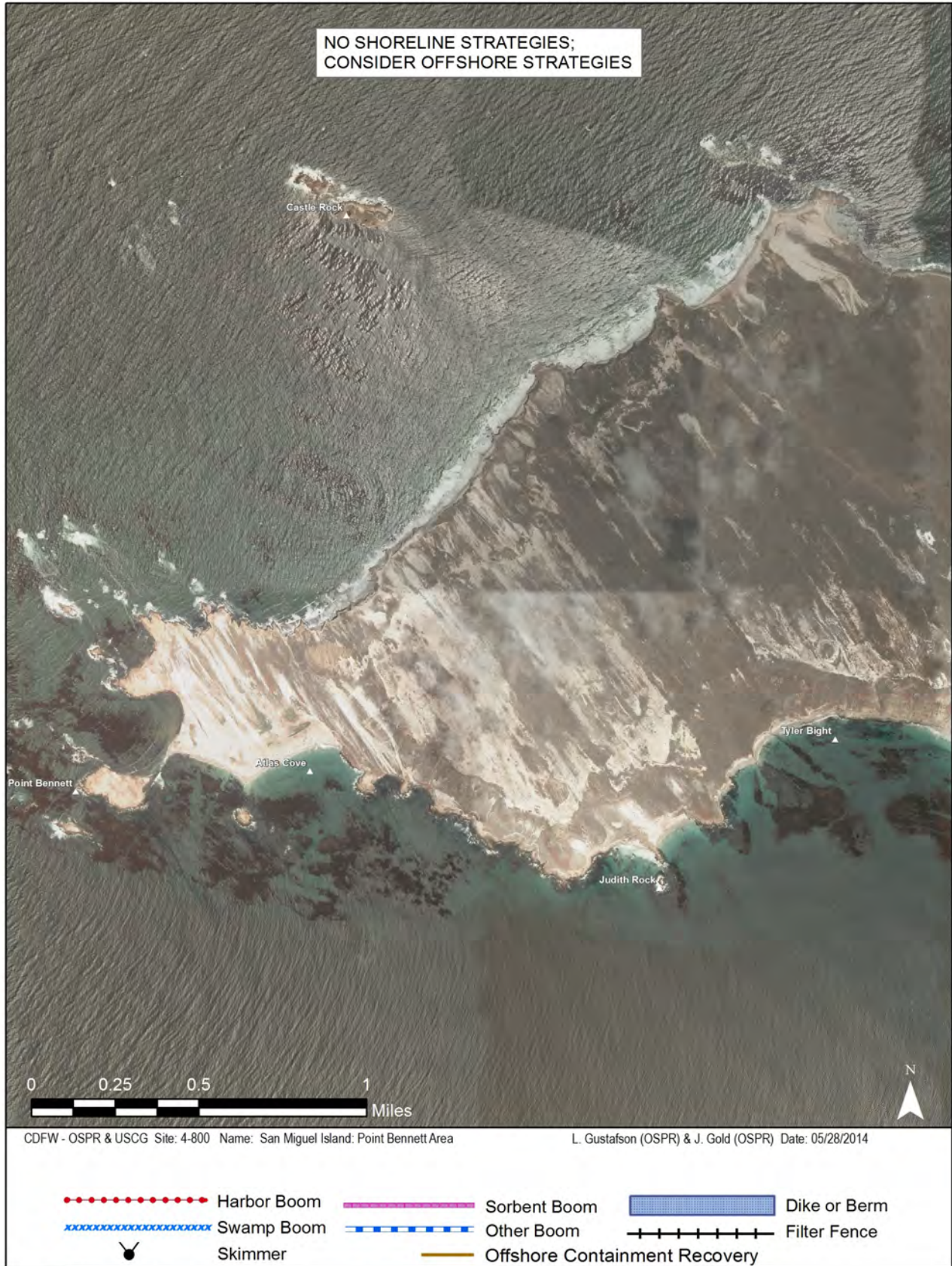
Land Access: No road or vehicle access.

On-Water Limitations: High energy shoreline. Access by sea not practical.

Facilities, Staging Areas, Command Posts, Available Equipment: None.

Communications Problems: Cell phone reception is unreliable. Marine VHF or satellite phone are the best options.

Additional Operational Comments: Each island is equipped with at least 1 base station radio for communication with park headquarters and a marine band radio.



Imagery: NAIP 2010 (Summer) 4-Band

4-806-A Site Summary - San Miguel Island: East Simonton Cove**4-806-A****County :** Santa Barbara **ACP Division/Segment :** CI - A - S000**NOAA Chart :** 18720**Map Book :** NA**Decimal Degrees** 34.055 -120.39**Site Description:**

Northwest central part of Island in between Otter Harbor to Harris point. East Simonton Cove area is primarily exposed wave-cut rock platforms. Nesting birds include Brandt's and pelagic cormorant, black oystercatcher, snowy plover, peregrine falcon and western gull. Marine mammals include harbor seals, northern elephant seals and California sea lions. Important intertidal resources include black abalone. The areas offshore of this site are included in the Harris Point State and Federal Marine Reserves. Richarson Rock State and Federal Marine Reserves are located farther to the northwest. Richarson Rock which is about 8.5 miles northwest and Wilson Rock which is about 3.5 miles north of Simonton Cove are associated with the BLM California Coastal National Monument.

Resources at Risk:*ESI and Habitat:* 2A Exposed wave-cut platforms in bedrock, mud, or clay**List of Resources at Risk:**

	Resource Name	Status	Presence
Birds	Western snowy plover	FT	Year-round
Birds	seabirds		Year-round
Invertebrates	black abalone	FE	Year-round
Invertebrates	rocky intertidal resources		Year-round
Mammals	San Miguel Island fox	FE, SE	Year-round
Mammals	marine mammals		Year-round

FT-Federally Threatened, FE-Federally Endangered, FP-Federally Protected, SE-State Endangered, ST-State Threatened, SP -State Protected, SR-State Rare, SSC-Species of Special Concern, BGEPA-Bald and Golden Eagle Protection Act, SSSP-State Special Status Species

List of Key Contacts:

Type	Name/Title	Organization	Phone
C	/	Central Coast Archeological Information Center	(805) 893-2474
C	/	Native American Heritage Commission	(916) 373-3710
E	John Hodge/Associate Field Manager	Bureau of Land Management, Coastal Natl. Monu	(661) 301-1659
T	Becky Ota/Marine Conservation Manager	California Department of Fish & Wildlife, MPAs	(650) 631-6789
T	Steve Wertz/Senior Environmental Scientist	California Department of Fish and Wildlife, Marine	(562) 343-3808
T	/24hr	Channel Islands National Marine Sanctuary	(805) 729-1271
T	/Deputy Superintendent	Channel Islands National Marine Sanctuary	(805) 448-9971
T	/Sanctuary Superintendent	Channel Islands National Marine Sanctuary	(805) 259-6540
T	Operations Manager/Emergency	Channel Islands National Marine Sanctuary	(805) 705-1790
T	Superintendent of Operations/Deputy	Channel Islands National Marine Sanctuary	(805) 689-8920
T	/Dispatch	Channel Islands National Park	(559) 565-4221
T	/	US Fish and Wildlife Service, Federal T&E Species	(805) 644-1766

C – Cultural, Historic, Archaeological; E – Entry/Owner/Access; O – Other; S – Safety; T – Trustee; X – Exclusion or Security

Additional Site Summary Comments:

Western snowy plovers nest from Mar-Sep. Seabirds nest from Mar-Nov and marine mammals pup and breed from Dec-Aug.

Concerns and Advice to Responders:

San Miguel Island is the northernmost and farthest west of the Channel Islands, lying 55 miles northwest of Ventura. More than 100,000 seals and sea lions breed, pup, and haul out on the island's 27 miles of isolated coastline. Large numbers of sea birds nest on San Miguel and on nearby Prince Island. Trustee agencies may not sanction onshore response activities. Refer to and comply with introductory section of 9814 before initiating any response activities.

Hazard and Restrictions:

Conditions in the Santa Barbara Channel and around the islands are variable and the ocean is unforgiving. Only experienced skippers with vessels capable of withstanding severe weather are advised to make the cross-channel passage. Major shipping lanes lie between the islands and the mainland.

Site Strategies:

Strategy: 4-806.1 Objective: No Onsite Options: Consider Offshore Containment/Recovery/ART

Strategy: Onshore protection strategies for this area are extremely limited. Attempt to collect and/or disperse oil in offshore locations before it reaches the shoreline. Before initiating any response activities within the Channel Islands National Marine Sanctuary or the Channel Islands National Park, refer to and comply with the Channel Islands Introductory section 9814. Protect the Marine Protected Area (MPA) boundaries.

Table of Response Resources

Last Page Update

Logistics:

Directions: Only by boat (access by boat generally not practical) or aircraft. Closest harbors are Santa Barbara and Ventura. Channel Islands Aviation is located at Camarillo Airport and is able to fly and land on the islands. All access to the Channel Islands must be coordinated with National Parks and must follow biosecurity protocols. Refer to introductory section of 9814 for more information.

Land Access: No road or vehicle access.

On-Water Limitations: High energy shoreline. Access by sea not practical.

Facilities, Staging Areas, Command Posts, Available Equipment: None.

Communications Problems: Cell phone reception is unreliable. Marine VHF or satellite phones are the best options.

Additional Operational Comments: Each island is equipped with at least 1 base station radio for communication with park headquarters and a marine band radio.



Imagery: NAIP 2010 (Summer) 4-Band

4-812-A Site Summary - San Miguel Island: Cuyler Harbor**4-812-A****County :** Santa Barbara **ACP Division/Segment :** CI - A - S000**NOAA Chart :** 18720**Map Book :** NA**Decimal Degrees** 34.05083 -120.35194**Site Description:**

This harbor is located on the northeast central part of the island. The east side of Cuyler Harbor is primarily medium to coarse-grained sand beach. Western snowy plovers nest from Mar-Sep and harbor seals pup and bred from Dec-May. Giant kelp is found offshore. Some of the areas offshore of this site are included in the Harris Point State and Federal Marine Reserves.

Resources at Risk:*ESI and Habitat:* 3A Fine- to medium-grained sand beaches**List of Resources at Risk:**

	Resource Name	Status	Presence
Birds	Western snowy plover	FT	Year-round
Invertebrates	kelp forests		Year-round
Mammals	San Miguel Island fox	FE, SE	Year-round
Mammals	marine mammals		Year-round

FT-Federally Threatened, FE-Federally Endangered, FP-Federally Protected, SE-State Endangered, ST-State Threatened, SP -State Protected, SR-State Rare, SSC-Species of Special Concern, BGEPA-Bald and Golden Eagle Protection Act, SSSP-State Special Status Species

List of Key Contacts:

Type	Name/Title	Organization	Phone
C	/	Central Coast Archeological Information Center	(805) 893-2474
C	/	Native American Heritage Commission	(916) 373-3710
T	Becky Ota/Marine Conservation Manager	California Department of Fish & Wildlife, MPAs	(650) 631-6789
T	Steve Wertz/Senior Environmental Scientist	California Department of Fish and Wildlife, Marine	(562) 343-3808
T	/24hr	Channel Islands National Marine Sanctuary	(805) 729-1271
T	/Deputy Superintendent	Channel Islands National Marine Sanctuary	(805) 448-9971
T	/Sanctuary Superintendent	Channel Islands National Marine Sanctuary	(805) 259-6540
T	Operations Manager/Emergency	Channel Islands National Marine Sanctuary	(805) 705-1790
T	Superintendent of Operations/Deputy	Channel Islands National Marine Sanctuary	(805) 689-8920
T	/Dispatch	Channel Islands National Park	(559) 565-4221
T	/	US Fish and Wildlife Service, Federal T&E Species	(805) 644-1766

C – Cultural, Historic, Archaeological; E – Entry/Owner/Access; O – Other; S – Safety; T – Trustee; X – Exclusion or Security

Additional Site Summary Comments:

Western snowy plovers nest from Mar-Sep.

Concerns and Advice to Responders:

San Miguel Island is the northernmost and farthest west of the Channel Islands, lying 55 miles northwest of Ventura. More than 100,000 seals and sea lions breed, pup, and haul out on the island's 27 miles of isolated coastline. Large numbers of sea birds nest on San Miguel and on nearby Prince Island. Trustee agencies may not sanction onshore response activities. Refer to and comply with introductory section of 9814 before initiating any response activities.

Hazard and Restrictions:

Conditions in the Santa Barbara Channel and around the islands are variable and the ocean is unforgiving. Only experienced skippers with vessels capable of withstanding severe weather are advised to make the cross-channel passage. Major shipping lanes lie between the islands and the mainland.

Site Strategies:

Strategy: 4-812.1 Objective: No Onsite Options: Consider Offshore Containment/Recovery/ART

Strategy: Onshore protection strategies for this area are very limited. Attempt to collect and/or disperse oil in offshore locations before it reaches the shoreline. Before initiating any response activities within the Channel Islands National Marine Sanctuary or the Channel Islands National Park, refer to and comply with the Channel Islands Introductory section 9814. Protect the Marine Protected Area (MPA) boundaries.

Table of Response Resources

Last Page Update

Logistics:

Directions: Only by boat (access by boat generally not practicle) or aircraft. Closest harbors are Santa Barbara and Ventura. Channel Islands Aviation is located at Camarillo Airport and is able to fly and land on the islands. All access to the Channel Islands must be coordinated with National Parks and must follow biosecurity protocols. Refer to introductory section of 9814 for more information.

Land Access: No road or vehicle access.

On-Water Limitations: High energy shoreline. Access by sea not practical.

Facilities, Staging Areas, Command Posts, Available Equipment: None.

Communications Problems: Cell phone reception is unreliable. Marine VHF or Satellite phones are the best options.

Additional Operational Comments: Each island is equipped with at least 1 base station radio for communication with park headquarters and a marine band radio.



4-813-A Site Summary - San Miguel Island: Prince Island**4-813-A****County :** Santa Barbara **ACP Division/Segment :** CI - A - S000**NOAA Chart :** 18720**Map Book :** NA**Decimal Degrees** 34.05806 -120.3325**Site Description:**

Prince Island is a large, steep sided rock pinnacle off the north-east corner of San Miguel island. It has large populations of nesting seabirds (Mar-Nov). Nesting birds include ash storm-petrel (Feb-Nov), Cassin's auklet (Mar-Sep), pigeon guillemot (Mar-Aug), western gull (Mar-Sep), black oystercatcher (Mar-Sep), peregrine falcon, rhinoceros auklet (May-Sep), tufted puffin (Apr-Nov), pelagic cormorant (Mar-Sep), double crested cormorant (Mar-Aug), Leach's storm-petral (Feb-Oct). The areas offshore of this site are included in the Harris Point State and Federal Marine Reserves.

Resources at Risk:

ESI and Habitat: 2A Exposed wave-cut platforms in bedrock, mud, or clay
 1A Exposed Rocky Shore

List of Resources at Risk:

	Resource Name	Status	Presence
Birds	seabirds		Year-round
Invertebrates	black abalone	FE	Year-round
Mammals	San Miguel Island fox	FE, SE	Year-round

FT-Federally Threatened, FE-Federally Endangered, FP-Federally Protected, SE-State Endangered, ST-State Threatened, SP -State Protected, SR-State Rare, SSC-Species of Special Concern, BGEPA-Bald and Golden Eagle Protection Act, SSSP-State Special Status Species

List of Key Contacts:

Type	Name/Title	Organization	Phone
C	/	Central Coast Archeological Information Center	(805) 893-2474
C	/	Native American Heritage Commission	(916) 373-3710
T	Becky Ota/Marine Conservation Manager	California Department of Fish & Wildlife, MPAs	(650) 631-6789
T	Steve Wertz/Senior Environmental Scientist	California Department of Fish and Wildlife, Marine	(562) 343-3808
T	/24hr	Channel Islands National Marine Sanctuary	(805) 729-1271
T	/Deputy Superintendent	Channel Islands National Marine Sanctuary	(805) 448-9971
T	/Sanctuary Superintendent	Channel Islands National Marine Sanctuary	(805) 259-6540
T	Operations Manager/Emergency	Channel Islands National Marine Sanctuary	(805) 705-1790
T	Superintendent of Operations/Deputy	Channel Islands National Marine Sanctuary	(805) 689-8920
T	/Dispatch	Channel Islands National Park	(559) 565-4221
T	/	US Fish and Wildlife Service, Federal T&E Species	(805) 644-1766

C – Cultural, Historic, Archaeological; E – Entry/Owner/Access; O – Other; S – Safety; T – Trustee; X – Exclusion or Security

Additional Site Summary Comments:

Concerns and Advice to Responders:

San Miguel Island is the northernmost and farthest west of the Channel Islands, lying 55 miles northwest of Ventura. More than 100,000 seals and sea lions breed, pup, and haul out on the island's 27 miles of isolated coastline. Large numbers of sea birds nest on San Miguel and on nearby Prince Island. Trustee agencies may not sanction onshore response activities. Refer to and comply with introductory section of 9814 before initiating any response activities.

Hazard and Restrictions:

Conditions in the Santa Barbara Channel and around the islands are variable and the ocean is unforgiving. Only experienced skippers with vessels capable of withstanding severe weather are advised to make the cross-channel passage. Major shipping lanes lie between the islands and the mainland.

Site Strategies:

Strategy: 4-813.1 Objective: No Onsite Options: Consider Offshore Containment/Recovery/ART

Strategy: Onshore protection strategies for this area are very limited. Attempt to collect and/or disperse oil in offshore locations before it reaches the shoreline. Before initiating any response activities within the Channel Islands National Marine Sanctuary or Channel Islands National Park, refer to and comply with the Channel Islands Introductory section of 9814. Protect the Marine Protected Area (MPA) boundaries.

Table of Response Resources

Last Page Update

Logistics:

Directions: Only by boat (access by boat generally not practical) or aircraft. Closest harbors are Santa Barbara and Ventura. Channel Islands Aviation is located at Camarillo Airport and is able to fly and land on the islands. All access to the Channel Islands must be coordinated with National Parks and must follow biosecurity protocols. Refer to introductory section of 9814 for more information.

Land Access: No road or vehicle access.

On-Water Limitations: High energy shoreline. Access by sea not practical.

Facilities, Staging Areas, Command Posts, Available Equipment: None.

Communications Problems: Cell phone reception is unreliable. Marine VHF or Satellite phones are the best options.

Additional Operational Comments: Each island is equipped with at least 1 base station radio for communication with park headquarters and a marine band radio.



4-815-A Site Summary - San Miguel Island: Bay Point**4-815-A****County :** Santa Barbara **ACP Division/Segment :** CI - A - S000**NOAA Chart :** 18720**Map Book :** NA**Decimal Degrees** 34.04194 -120.31778**Site Description:**

This site is on the northeast side of the island. The Bay Point area is primarily wave-cut rock platforms. Nesting seabirds include Brandt's cormorant (Feb-Aug), pigeon guillemot (Mar-Aug), western gull (Mar-Sep), black oystercatcher (Mar-Sep), pelagic cormorant (Mar-Sep). Harbor seals pupping and breeding (Dec-May) also occurs at this site. The areas offshore of this site are included in the Harris Point State and Federal Marine Reserves.

Resources at Risk:*ESI and Habitat:* 2A Exposed wave-cut platforms in bedrock, mud, or clay**List of Resources at Risk:**

	Resource Name	Status	Presence
Birds	seabirds		Year-round
Invertebrates	black abalone	FE	Year-round
Mammals	San Miguel Island fox	FE, SE	Year-round
Mammals	marine mammals		Year-round

FT-Federally Threatened, FE-Federally Endangered, FP-Federally Protected, SE-State Endangered, ST-State Threatened, SP -State Protected, SR-State Rare, SSC-Species of Special Concern, BGEPA-Bald and Golden Eagle Protection Act, SSSP-State Special Status Species

List of Key Contacts:

Type	Name/Title	Organization	Phone
C	/	Central Coast Archeological Information Center	(805) 893-2474
C	/	Native American Heritage Commission	(916) 373-3710
T	Becky Ota/Marine Conservation Manager	California Department of Fish & Wildlife, MPAs	(650) 631-6789
T	Steve Wertz/Senior Environmental Scientist	California Department of Fish and Wildlife, Marine	(562) 343-3808
T	/24hr	Channel Islands National Marine Sanctuary	(805) 729-1271
T	/Deputy Superintendent	Channel Islands National Marine Sanctuary	(805) 448-9971
T	/Sanctuary Superintendent	Channel Islands National Marine Sanctuary	(805) 259-6540
T	Operations Manager/Emergency	Channel Islands National Marine Sanctuary	(805) 705-1790
T	Superintendent of Operations/Deputy	Channel Islands National Marine Sanctuary	(805) 689-8920
T	/Dispatch	Channel Islands National Park	(559) 565-4221
T	/	US Fish and Wildlife Service, Federal T&E Species	(805) 644-1766

C – Cultural, Historic, Archaeological; E – Entry/Owner/Access; O – Other; S – Safety; T – Trustee; X – Exclusion or Security

Additional Site Summary Comments:

Concerns and Advice to Responders:

San Miguel Island is the northernmost and farthest west of the Channel Islands, lying 55 miles northwest of Ventura. More than 100,000 seals and sea lions breed, pup, and haul out on the island's 27 miles of isolated coastline. Large numbers of sea birds nest on San Miguel and on nearby Prince Island. Trustee agencies may not sanction onshore response activities. Refer to and comply with introductory section of 9814 before initiating any response activities.

Hazard and Restrictions:

Conditions in the Santa Barbara Channel and around the islands are variable and the ocean is unforgiving. Only experienced skippers with vessels capable of withstanding severe weather are advised to make the cross-channel passage. Major shipping lanes lie between the islands and the mainland.

Site Strategies:

Strategy: 4-815.1 Objective: No Onsite Options: Consider Offshore Containment/Recovery/ART

Strategy: There are no feasible onshore protection strategies for this area. Attempt to collect and/or disperse oil in offshore locations before it reaches the shoreline. Before initiating any response activities within the Channel Islands National Marine Sanctuary or the Channel Islands National Park, refer to and comply with the Channel Islands Introductory section 9814. Protect the Marine Protected Area (MPA) boundaries.

Table of Response Resources

Last Page Update

Logistics:

Directions: Only by boat (access by boat generally not practical) or aircraft. Closest harbors are Santa Barbara and Ventura. Channel Islands Aviation is located at Camarillo Airport and is able to fly and land on the islands. All access to the Channel Islands must be coordinated with National Parks and must follow biosecurity protocols. Refer to introductory section of 9814 for more information.

Land Access: No road or vehicle access.

On-Water Limitations: High energy shoreline. Access by sea not practical.

Facilities, Staging Areas, Command Posts, Available Equipment: None.

Communications Problems: Cell phone reception is unreliable. Marine VHF and satellite phones are the best options.

Additional Operational Comments: Each island is equipped with at least 1 base station radio for communication with park headquarters and a marine band radio.



4-818-A Site Summary - San Miguel Island: South Side**4-818-A****County :** Santa Barbara **ACP Division/Segment :** CI - A - S000**NOAA Chart :** 18720**Map Book :** NA**Decimal Degrees** 34.0167 -120.371**Site Description:**

This site is located on the front side of San Miguel Island, from Tyler Bight to Cardwell Point which is primarily wave-cut rock platforms and medium to coarse-grained sand beaches. Nesting seabirds include ashy storm-petrel (Feb-Nov), pelagic cormorant (Mar-Sep) and western gull (Mar-Sep). Important intertidal resources are at this site including black abalone. Marine mammals include common dolphins, harbor seals (Dec-May) and northern elephant seals (Dec-July). Giant kelp is present offshore. The areas offshore of this site are included in the Judith Rock State Marine Reserve.

Resources at Risk:*ESI and Habitat:* 4 Coarse-grained sand beaches

2A Exposed wave-cut platforms in bedrock, mud, or clay

List of Resources at Risk:

	Resource Name	Status	Presence
Birds	Western snowy plover	FT	Year-round
Birds	seabirds		Year-round
Invertebrates	black abalone	FE	Year-round
Invertebrates	rocky intertidal resources		Year-round
Mammals	San Miguel Island fox	FE, SE	Year-round
Mammals	marine mammals		Year-round

FT-Federally Threatened, FE-Federally Endangered, FP-Federally Protected, SE-State Endangered, ST-State Threatened, SP -State Protected, SR-State Rare, SSC-Species of Special Concern, BGEPA-Bald and Golden Eagle Protection Act, SSSP-State Special Status Species

List of Key Contacts:

Type	Name/Title	Organization	Phone
C	/	Central Coast Archeological Information Center	(805) 893-2474
C	/	Native American Heritage Commission	(916) 373-3710
T	Becky Ota/Marine Conservation Manager	California Department of Fish & Wildlife, MPAs	(650) 631-6789
T	Steve Wertz/Senior Environmental Scientist	California Department of Fish and Wildlife, Marine	(562) 343-3808
T	/24hr	Channel Islands National Marine Sanctuary	(805) 729-1271
T	/Deputy Superintendent	Channel Islands National Marine Sanctuary	(805) 448-9971
T	/Sanctuary Superintendent	Channel Islands National Marine Sanctuary	(805) 259-6540
T	Operations Manager/Emergency	Channel Islands National Marine Sanctuary	(805) 705-1790
T	Superintendent of Operations/Deputy	Channel Islands National Marine Sanctuary	(805) 689-8920
T	/Dispatch	Channel Islands National Park	(559) 565-4221
T	/	US Fish and Wildlife Service, Federal T&E Species	(805) 644-1766

C – Cultural, Historic, Archaeological; E – Entry/Owner/Access; O – Other; S – Safety; T – Trustee; X – Exclusion or Security

Additional Site Summary Comments:

Western snowy plovers nest from Mar-Sep.

Concerns and Advice to Responders:

San Miguel Island is the northernmost and farthest west of the Channel Islands, lying 55 miles northwest of Ventura. More than 100,000 seals and sea lions breed, pup, and haul out on the island's 27 miles of isolated coastline. Large numbers of sea birds nest on San Miguel and on nearby Prince Island. Trustee agencies may not sanction onshore response activities. Refer to and comply with introductory section of 9814 before initiating any response activities.

Hazard and Restrictions:

Conditions in the Santa Barbara Channel and around the islands are variable and the ocean is unforgiving. Only experienced skippers with vessels capable of withstanding severe weather are advised to make the cross-channel passage. Major shipping lanes lie between the islands and the mainland.

Site Strategies:

Strategy: 4-818.1 Objective: No Onsite Options: Consider Offshore Containment/Recovery/ART

Strategy: Onshore protection strategies for this area are very limited. Attempt to collect and/or disperse oil in offshore locations before it reaches the shoreline. Before initiating any response activities within the Channel Islands National Marine Sanctuary or the Channel Islands National Park, refer to and comply with the Channel Islands Introductory section 9814. Protect the Marine Protected Area (MPA) boundaries.

Table of Response Resources

Last Page Update

Logistics:

Directions: Only by boat (access by boat generally not practical) or aircraft. Closest harbors are Santa Barbara and Ventura. Channel Islands Aviation is located at Camarillo Airport and is able to fly and land on the islands. All access to the Channel Islands must be coordinated with National Parks and must follow biosecurity protocols. Refer to introductory section of 9814 for more information.

Land Access: No road or vehicle access.

On-Water Limitations: High energy shoreline. Access by sea not practical.

Facilities, Staging Areas, Command Posts, Available Equipment: None.

Communications Problems: Cell phone reception is unreliable. Marine VHF or satellite phones are the best options.

Additional Operational Comments: Each island is equipped with at least 1 base station radio for communication with park headquarters and a marine band radio.



County : Santa Barbara ACP Division/Segment : CI - B - S000

NOAA Chart : 18720

Map Book : NA

Decimal Degrees 33.925 -120.18

Site Description:

This site is located on the west end of Santa Rosa Island, from Sandy Point to Cluster Point with primarily exposed wave-cut rock platforms and medium to coarse-grained sand beaches with offshore rock pinnacles. There is an abundance of intertidal resources including black abalone. Nesting birds including surf scoter, black oystercatcher (Mar-Sep), Brandt's cormorant (Feb-Aug), pelagic cormorant (Mar-Sep), western gull (Mar-Sep) and western snowy plover (Mar-Sep). Western snowy plovers also winter along this beach. Marine mammals include harbor seals (Dec-May), northern elephant seals (Dec-July) and common dolphins. Giant kelp is found offshore. South Point State and Federal Marine Reserves are located east of this site.

Resources at Risk:

ESI and Habitat: 4 Coarse-grained sand beaches

2A Exposed wave-cut platforms in bedrock, mud, or clay

1A Exposed Rocky Shore

List of Resources at Risk:

	Resource Name	Status	Presence
Birds	Western snowy plover	FT	Year-round
Birds	seabirds		Year-round
Invertebrates	black abalone	FE	Year-round
Invertebrates	rocky intertidal resources		Year-round
Mammals	Santa Rosa Island fox	FE, SE	Year-round
Mammals	marine mammals		Year-round

FT-Federally Threatened, FE-Federally Endangered, FP-Federally Protected, SE-State Endangered, ST-State Threatened, SP -State Protected, SR-State Rare, SSC-Species of Special Concern, BGEPA-Bald and Golden Eagle Protection Act, SSSP-State Special Status Species

List of Key Contacts:

Type	Name/Title	Organization	Phone
C	/	Central Coast Archeological Information Center	(805) 893-2474
C	/	Native American Heritage Commission	(916) 373-3710
T	Becky Ota/	California Department of Fish & Wildlife, MPAs	(650) 631-6789
T	Steve Wertz/Senior Environmental Scientist	California Department of Fish and Wildlife, Marine	(562) 343-3808
T	/24hr	Channel Islands National Marine Sanctuary	(805) 729-1271
T	/Deputy Superintendent	Channel Islands National Marine Sanctuary	(805) 448-9971
T	/Sanctuary Superintendent	Channel Islands National Marine Sanctuary	(805) 259-6540
T	Operations Manager/Emergency	Channel Islands National Marine Sanctuary	(805) 705-1790
T	Operations Manager/Emergency	Channel Islands National Marine Sanctuary	(805) 705-1790
T	/Dispatch	Channel Islands National Park	(559) 565-4221
T	/	US Fish and Wildlife Service, Federal T&E Species	(805) 644-1766

C – Cultural, Historic, Archaeological; E – Entry/Owner/Access; O – Other; S – Safety; T – Trustee; X – Exclusion or Security

Additional Site Summary Comments:

Western snowy plovers nest from Mar-Sep.

Concerns and Advice to Responders:

Santa Rosa Island is located 40 miles west of Ventura and is home to large numbers of seals and sea lions as well as colonies of seabirds. This site has seasonal marine mammal pupping and breeding from December through August and nesting seabirds from March through November. Trustee agencies may not sanction onshore response activities. Refer to and comply with introductory section of 9814 before initiating any response activities.

Hazard and Restrictions:

Conditions in the Santa Barbara Channel and around the islands are variable and the ocean is unforgiving. Only experienced skippers with vessels capable of withstanding severe weather are advised to make the cross-channel passage. Major shipping lanes lie between the islands and the mainland.

Site Strategies:

Strategy: 4-820.1 Objective: No Onsite Options: Consider Offshore Containment/Recovery/ART

Strategy: Onshore protection strategies for this area are very limited. Attempt to collect and/or disperse oil in offshore locations before it reaches the shoreline. Before initiating any response activities within the Channel Islands National Marine Sanctuary or the Channel Islands National Park, refer to and comply with the Channel Islands Introductory section 9814. Protect the Marine Protected Area (MPA) boundaries.

Table of Response Resources

Last Page Update

Logistics:

Directions: Only by boat or aircraft. Closest harbors are Santa Barbara and Ventura. Channel Islands Aviation is located at Camarillo Airport and is able to fly and land on the islands. All access to the Channel Islands must be coordinated with National Parks and must follow biosecurity protocols. Refer to introductory section of 9814 for more information.

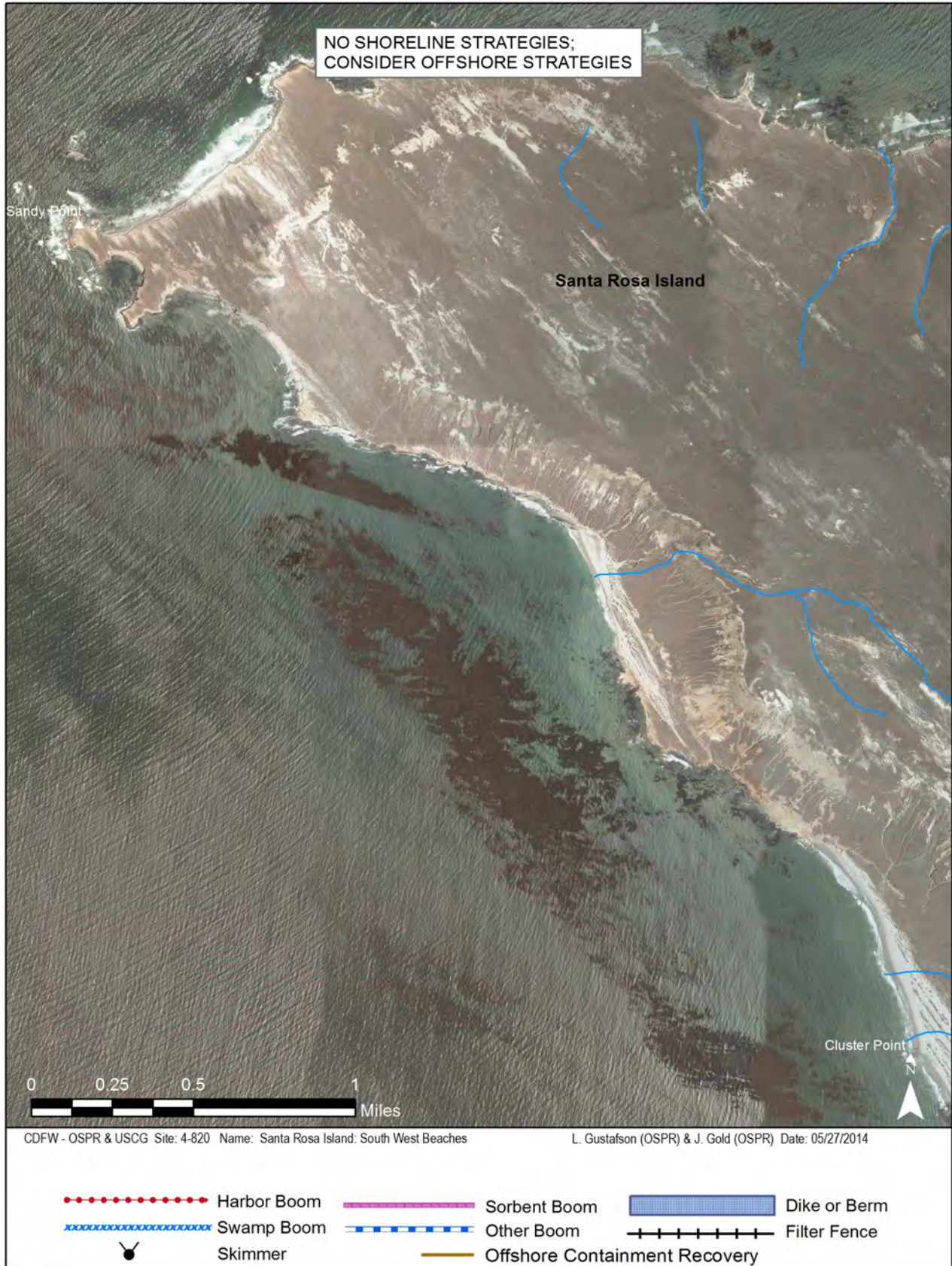
Land Access:

On-Water Limitations: Access to the island by water is available at the pier in Bechers Bay.

Facilities, Staging Areas, Command Posts, Available Equipment:

Communications Problems: Cell phone reception is unreliable. Marine VHF or satellite phones are the best options.

Additional Operational Comments: Each island is equipped with at least 1 base station radio for communication with park headquarters and a marine band radio.



Imagery: NAIP 2010 (Summer) 4-Band

4-824-A Site Summary - Santa Rosa Island: North Area**4-824-A****County :** Santa Barbara **ACP Division/Segment :** CI - B - S000**NOAA Chart :** 18720**Map Book :** NA**Decimal Degrees** 34.0214 -120.096**Site Description:**

This site is at the northern part of Santa Rosa Island from the east end of Sandy Point Beach to Carrington Point. The habitat is primarily exposed wave-cut rock platforms, vertical rock cliffs and a few pocket sand beaches. Nesting seabirds include black oystercatcher (Mar-Sep), Brandt's cormorant (Feb-Aug), pelagic cormorant (Mar-Sep), pigeon guillemot (Mar-Aug), western gull (Mar-Sep) and peregrin falcon. Puffling and breeding marine mammals include harbor seals (Dec-May), California sea lions (May-Aug) and northern elephant seals (Dec-July). A high abundance of surfgrass beds and giant kelp forest are offshore. The areas offshore of this site are included in the Carrington Point Marine Reserve. California sea lions and breeding pelagic cormorants can be found at Carrington Point.

Resources at Risk:*ESI and Habitat:* 4 Coarse-grained sand beaches

2A Exposed wave-cut platforms in bedrock, mud, or clay

1A Exposed Rocky Shore

List of Resources at Risk:

	Resource Name	Status	Presence
Birds	seabirds		Year-round
Invertebrates	black abalone	FE	Year-round
Invertebrates	rocky intertidal resources		Year-round
Mammals	Santa Rosa Island fox	FE, SE	Year-round
Mammals	marine mammals		Year-round

FT-Federally Threatened, FE-Federally Endangered, FP-Federally Protected, SE-State Endangered, ST-State Threatened, SP -State Protected, SR-State Rare, SSC-Species of Special Concern, BGEPA-Bald and Golden Eagle Protection Act, SSSP-State Special Status Species

List of Key Contacts:

Type	Name/Title	Organization	Phone
C	/	Central Coast Archeological Information Center	(805) 893-2474
C	/	Native American Heritage Commission	(916) 373-3710
T	Becky Ota/Marine Conservation Manager	California Department of Fish & Wildlife, MPAs	(650) 631-6789
T	Steve Wertz/Senior Environmental Scientist	California Department of Fish and Wildlife, Marine	(562) 343-3808
T	/24hr	Channel Islands National Marine Sanctuary	(805) 729-1271
T	/Deputy Superintendent	Channel Islands National Marine Sanctuary	(805) 448-9971
T	/Sanctuary Superintendent	Channel Islands National Marine Sanctuary	(805) 259-6540
T	Operations Manager/Emergency	Channel Islands National Marine Sanctuary	(805) 705-1790
T	Superintendent of Operations/Deputy	Channel Islands National Marine Sanctuary	(805) 689-8920
T	/Dispatch	Channel Islands National Park	(559) 565-4221
T	/	US Fish and Wildlife Service, Federal T&E Species	(805) 644-1766

C – Cultural, Historic, Archaeological; E – Entry/Owner/Access; O – Other; S – Safety; T – Trustee; X – Exclusion or Security

Additional Site Summary Comments:

Concerns and Advice to Responders:

Santa Rosa Island is located 40 miles west of Ventura and is home to large numbers of seals and sea lions as well as colonies of seabirds. This site has seasonal marine mammal pupping and breeding from December through August and nesting seabirds from March through November. Trustee agencies may not sanction onshore response activities. Refer to and comply with introductory section of 9814 before initiating any response activities.

Hazard and Restrictions:

Conditions in the Santa Barbara Channel and around the islands are variable and the ocean is unforgiving. Only experienced skippers with vessels capable of withstanding severe weather are advised to make the cross-channel passage. Major shipping lanes lie between the islands and the mainland.

Site Strategies:

Strategy: 4-824.1 Objective: Shoreline Pre-Clean: Resource Specialist Supervision Required

Strategy: Refer to Channel Islands Introduction Section of 9814 (especially Biosecurity) before conducting any shoreline pre-cleaning. A natural resource trustee and/or an archaeologist (usually a CINP employee) may need to be on-site during work to ensure compliance with Channel Island response restrictions. Small hand crews of no more than 10 persons remove and store kelp, driftwood, vegetative debris, trash, and other materials which could become oiled and create environmental hazards and disposal problems. Segregate and dispose trash. Replace unoiled debris in its former location once the threat of oiling is past.

Table of Response Resources

Equipment	Sub-Type	Size	Unit	QTY	Unit	Last Page Update
Staff				5		

Logistics:

Directions: Only by boat or aircraft. Closest harbors are Santa Barbara and Ventura. Channel Islands Aviation is located at Camarillo Airport and is able to fly and land on the islands. All access to the Channel Islands must be coordinated with National Parks and must follow biosecurity protocols. Refer to introductory section of 9814 for more information.

Land Access:

On-Water Limitations: Access to the island by water is available at the pier in Bechers Bay.

Facilities, Staging Areas, Command Posts, Available Equipment:

Communications Problems: Cell phone reception is unreliable. Marine VHF or satellite phones are the best options.

Additional Operational Comments: Each island is equipped with at least 1 base station radio for communication with park headquarters and a marine band radio.



Imagery: NAIP 2012 (Summer) 4-Band

4-826-A Site Summary - Santa Rosa Island: Arlington Canyon Lagoon**4-826-A****County :** Santa Barbara **ACP Division/Segment :** CI - B - S000**NOAA Chart :** 18720**Map Book :** NA**Decimal Degrees** 34.005386 -120.177446**Site Description:**

This site is located on the northwest side of island. There can be a lot of kelp debris onshore. Wetland habitat with tree frogs are present. There was historic western snowy plover nesting (Mar-Sep) before the elephant seal population increased (Dec-July).

Resources at Risk:*ESI and Habitat:* 10B Freshwater marshes

9B Vegetated low banks

4 Coarse-grained sand beaches

2A Exposed wave-cut platforms in bedrock, mud, or clay

List of Resources at Risk:

	Resource Name	Status	Presence
Birds	Western snowy plover	FT	Year-round
Mammals	Northern elephant seal	FP	Year-round

FT-Federally Threatened, FE-Federally Endangered, FP-Federally Protected, SE-State Endangered, ST-State Threatened, SP -State Protected, SR-State Rare, SSC-Species of Special Concern, BGEPA-Bald and Golden Eagle Protection Act, SSSP-State Special Status Species

List of Key Contacts:

Type	Name/Title	Organization	Phone
C	/	Central Coast Archeological Information Center	(805) 893-2474
C	/	Native American Heritage Commission	(916) 373-3710
T	/24hr	Channel Islands National Marine Sanctuary	(805) 729-1271
T	/Deputy Superintendent	Channel Islands National Marine Sanctuary	(805) 448-9971
T	/Sanctuary Superintendent	Channel Islands National Marine Sanctuary	(805) 259-6540
T	Operations Manager/Emergency	Channel Islands National Marine Sanctuary	(805) 705-1790
T	Superintendent of Operations/Deputy	Channel Islands National Marine Sanctuary	(805) 689-8920
T	/Dispatch	Channel Islands National Park	(559) 565-4221
T	/	US Fish and Wildlife Service, Federal T&E Species	(805) 644-1766

C – Cultural, Historic, Archaeological; E – Entry/Owner/Access; O – Other; S – Safety; T – Trustee; X – Exclusion or Security

Additional Site Summary Comments:

Concerns and Advice to Responders:

Santa Rosa Island is located 40 miles west of Ventura and is home to large numbers of seals and sea lions as well as colonies of seabirds. This site has seasonal marine mammal pupping and breeding from December through August and nesting seabirds from March through November. Trustee agencies may not sanction onshore response activities. Refer to and comply with introductory section of 9814 before initiating any response activities.

Hazard and Restrictions:

Conditions in the Santa Barbara Channel and around the islands are variable and the ocean is unforgiving. Only experienced skippers with vessels capable of withstanding severe weather are advised to make the cross-channel passage. Major shipping lanes lie between the islands and the mainland.

Site Strategies:

Strategy: 4-826.1 Objective: No Onsite Options: Consider Offshore Containment/Recovery/ART

Strategy: There are no feasible onshore protection strategies for this area. Attempt to collect and/or disperse oil in offshore locations before it reaches the shoreline. Before initiating any response activities within the Channel Islands National Marine Sanctuary or the Channel Islands National Park, refer to and comply with the Channel Islands Introductory section 9814.

Table of Response Resources

Last Page Update

Logistics:

Directions: Only by boat or aircraft. Closest harbors are Santa Barbara and Ventura. Channel Islands Aviation is located at Camarillo Airport and is able to fly and land on the islands. All access to the Channel Islands must be coordinated with National Parks and must follow biosecurity protocols. Refer to introductory section of 9814 for more information.

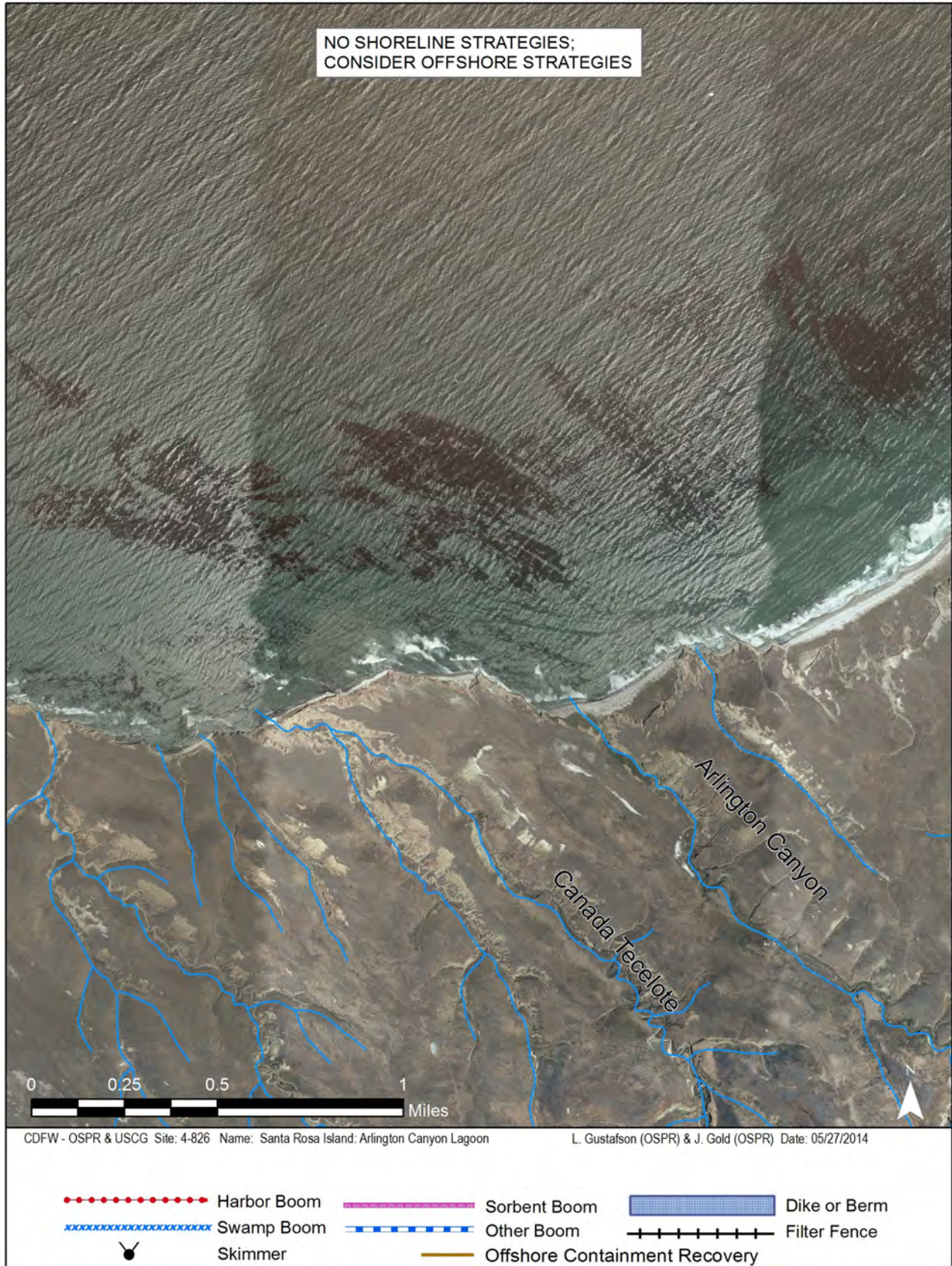
Land Access:

On-Water Limitations: Access to the island by water is available at the pier in Bechers Bay.

Facilities, Staging Areas, Command Posts, Available Equipment:

Communications Problems: Cell phone reception is unreliable. Marine VHF or Satellite phones are the best options.

Additional Operational Comments: Each island is equipped with at least 1 base station radio for communication with park headquarters and a marine band radio.



Imagery: NAIP 2010 (Summer) 4-Band

4-829-A Site Summary - Santa Rosa Island: Skunk Point Area**4-829-A****County :** Santa Barbara **ACP Division/Segment :** CI - B - S000**NOAA Chart :** 18720**Map Book :** NA**Decimal Degrees** 33.986667 -120.025**Site Description:**

This site is located on the northeastern side of Santa Rosa Island from the "Southeast Anchorage" area to East Point with primarily medium to coarse-grained sand beaches and wave-cut rock platforms. All year for high concentrations of marine mammals, seabirds and rocky intertidal resources. Nesting seabirds include black oystercatcher (Mar-Sep), Brandt's cormorant (Feb-Aug), pelagic cormorant (Mar-Sep), pigeon guillemot (Mar-Aug), western gull (Mar-Sep) and western snowy plover (Mar-Sept). Puffling and breeding marine mammals include harbor seals (Dec-May), California sea lion (May-Aug) and elephant seals (Dec-July). There are intermittent coastal wetlands and extensive surf grass, giant kelp and eelgrass beds offshore. Two rare and endangered plants (*Dudleya blochmaniae* ssp. *insularis* and *Dudleya gnoma*) exist near the coastline. Some areas offshore of this site are included in the Skunk Point Marine Reserve.

Resources at Risk:*ESI and Habitat:* 4 Coarse-grained sand beaches

2A Exposed wave-cut platforms in bedrock, mud, or clay

List of Resources at Risk:

	Resource Name	Status	Presence
Birds	Western snowy plover	FT	Year-round
Birds	seabirds		Year-round
Invertebrates	rocky intertidal resources		Year-round
Mammals	Santa Rosa Island fox	FE, SE	Year-round
Mammals	Northern elephant seal	FP	Year-round
Mammals	marine mammals		Year-round

FT-Federally Threatened, FE-Federally Endangered, FP-Federally Protected, SE-State Endangered, ST-State Threatened, SP -State Protected, SR-State Rare, SSC-Species of Special Concern, BGEPA-Bald and Golden Eagle Protection Act, SSSP-State Special Status Species

List of Key Contacts:

Type	Name/Title	Organization	Phone
C	/	Central Coast Archeological Information Center	(805) 893-2474
C	/	Native American Heritage Commission	(916) 373-3710
T	Becky Ota/Marine Conservation Manager	California Department of Fish & Wildlife, MPAs	(650) 631-6789
T	Steve Wertz/Senior Environmental Scientist	California Department of Fish and Wildlife, Marine	(562) 343-3808
T	/24hr	Channel Islands National Marine Sanctuary	(805) 729-1271
T	/Deputy Superintendent	Channel Islands National Marine Sanctuary	(805) 448-9971
T	/Sanctuary Superintendent	Channel Islands National Marine Sanctuary	(805) 259-6540
T	Operations Manager/Emergency	Channel Islands National Marine Sanctuary	(805) 705-1790
T	Superintendent of Operations/Deputy	Channel Islands National Marine Sanctuary	(805) 689-8920
T	/Dispatch	Channel Islands National Park	(559) 565-4221
T	/	US Fish and Wildlife Service, Federal T&E Species	(805) 644-1766

C – Cultural, Historic, Archaeological; E – Entry/Owner/Access; O – Other; S – Safety; T – Trustee; X – Exclusion or Security

Additional Site Summary Comments:

Concerns and Advice to Responders:

Santa Rosa Island is located 40 miles west of Ventura and is home to large numbers of seals and sea lions as well as colonies of seabirds. This site has seasonal marine mammal pupping and breeding from December through August and nesting seabirds from March through November. Trustee agencies may not sanction onshore response activities. Refer to and comply with introductory section of 9814 before initiating any response activities.

Hazard and Restrictions:

Conditions in the Santa Barbara Channel and around the islands are variable and the ocean is unforgiving. Only experienced skippers with vessels capable of withstanding severe weather are advised to make the cross-channel passage. Major shipping lanes lie between the islands and the mainland.

Site Strategies:

Strategy: 4-829.1 Objective: No Onsite Options: Consider Offshore Containment/Recovery/ART

Strategy: There are no feasible onshore protection strategies for this area. Attempt to collect and/or disperse oil in offshore locations before it reaches the shoreline. Before initiating any response activities within the Channel Islands National Marine Sanctuary or the Channel Islands National Park, refer to and comply with the Channel Islands Introductory section 9814. Protect the Marine Protected Area (MPA) boundaries.

Table of Response Resources

Last Page Update

Logistics:

Directions: Only by boat or aircraft. Closest harbors are Santa Barbara and Ventura. Channel Islands Aviation is located at Camarillo Airport and is able to fly and land on the islands. All access to the Channel Islands must be coordinated with National Parks and must follow biosecurity protocols. Refer to introductory section of 9814 for more information.

Land Access:

On-Water Limitations: Access to the island by water is available at the pier in Bechers Bay.

Facilities, Staging Areas, Command Posts, Available Equipment:

Communications Problems: Cell phone reception is unreliable. Marine VHF or Satellite phones are the best options.

Additional Operational Comments: Each island is equipped with at least 1 base station radio for communication with park headquarters and a marine band radio.



4-834-A Site Summary - Santa Rosa Island: Lagoon (East Side)**4-834-A****County :** Santa Barbara **ACP Division/Segment :** CI - B - S000**NOAA Chart :** 18720**Map Book :** NA**Decimal Degrees** 33.9575 -119.9774**Site Description:**

This site is located on the East side of Santa Rosa Island between Skunk Point and East Point. There are two small lagoons, old ranch canyon and old ranch house canyon. Wetlands are especially scarce on the Channel Islands. Some of the areas offshore of this site are included in the Skunk Point Marine Reserve. Nesting birds include black oystercatcher (Mar-Sep), Brandt's cormorant (Feb-Aug), pelagic cormorants (Mar-Sep), pigeon guillemot (Mar-Aug), western gull (Mar-Sep) and peregrine falcon. Western snowy plovers winter and bred (Mar-Sept) along the sandy beach. Marine mammals include California sea lions (May-Aug), common dolphins, harbor seals (Dec-May) and elephant seals (Dec-July) near east point. Offshore there are extensive giant kelp, eelgrass and seagrass beds.

Resources at Risk:*ESI and Habitat:* 10A Salt - and brackish-water marshes

9B Vegetated low banks

List of Resources at Risk:

	Resource Name	Status	Presence
Birds	Western snowy plover	FT	Year-round
Birds	seabirds		Year-round
Invertebrates	rocky intertidal resources		Year-round
Mammals	Santa Rosa Island fox	FE, SE	Year-round
Mammals	marine mammals		Year-round

FT-Federally Threatened, FE-Federally Endangered, FP-Federally Protected, SE-State Endangered, ST-State Threatened, SP -State Protected, SR-State Rare, SSC-Species of Special Concern, BGEPA-Bald and Golden Eagle Protection Act, SSSP-State Special Status Species

List of Key Contacts:

Type	Name/Title	Organization	Phone
C	/	Central Coast Archeological Information Center	(805) 893-2474
C	/	Native American Heritage Commission	(916) 373-3710
T	Becky Ota/Marine Conservation Manager	California Department of Fish & Wildlife, MPAs	(650) 631-6789
T	Steve Wertz/Senior Environmental Scientist	California Department of Fish and Wildlife, Marine	(562) 343-3808
T	/24hr	Channel Islands National Marine Sanctuary	(805) 729-1271
T	/Deputy Superintendent	Channel Islands National Marine Sanctuary	(805) 448-9971
T	/Sanctuary Superintendent	Channel Islands National Marine Sanctuary	(805) 259-6540
T	Operations Manager/Emergency	Channel Islands National Marine Sanctuary	(805) 705-1790
T	Superintendent of Operations/Deputy	Channel Islands National Marine Sanctuary	(805) 689-8920
T	/Dispatch	Channel Islands National Park	(559) 565-4221
T	/	US Fish and Wildlife Service, Federal T&E Species	(805) 644-1766

C – Cultural, Historic, Archaeological; E – Entry/Owner/Access; O – Other; S – Safety; T – Trustee; X – Exclusion or Security

Additional Site Summary Comments:

Western snowy plovers nest from Mar-Sep.

Concerns and Advice to Responders:

Santa Rosa Island is located 40 miles west of Ventura and is home to large numbers of seals and sea lions as well as colonies of seabirds. This site has seasonal marine mammal pupping and breeding from December through August and nesting seabirds from March through November. Trustee agencies may not sanction onshore response activities. Refer to and comply with introductory section of 9814 before initiating any response activities.

Hazard and Restrictions:

Conditions in the Santa Barbara Channel and around the islands are variable and the ocean is unforgiving. Only experienced skippers with vessels capable of withstanding severe weather are advised to make the cross-channel passage. Major shipping lanes lie between the islands and the mainland.

Site Strategies:

Strategy: 4-834.1 Objective: Exclude Oil

Strategy: Deploy exclusion booms across the inlet to minimize the likelihood of oiling the estuary. Place the booms in a configuration that forms an adjustable oil collection pocket that can accommodate changes in flow direction. Back exclusion booms with sorbent booms to minimize leakage. Line the shorelines and any side channels within the inlet to prevent collateral oiling. If there is recoverable oil on-water, deploy sorbents and contact the IC immediately regarding the use of skimmers. Monitor, adjust, and replace booms as needed to maintain effectiveness.

Table of Response Resources

Equipment	Sub-Type	Size	Unit	QTY	Unit	Last Page Update
Boom	Swamp Boom			240	feet	
Boom	Sorbent Boom			240	feet	
Staff				5		
stakes				24		

Logistics:

Directions: Only by boat or aircraft. Closest harbors are Santa Barbara and Ventura. Channel Islands Aviation is located at Camarillo Airport and is able to fly and land on the islands. All access to the Channel Islands must be coordinated with National Parks and must follow biosecurity protocols. Refer to introductory section of 9814 for more information.

Land Access:

On-Water Limitations: Access to the island by water is available at the pier in Bechers Bay.

Facilities, Staging Areas, Command Posts, Available Equipment:

Communications Problems: Cell phone reception is unreliable. Marine VHF or Satellite phones are the best options.

Additional Operational Comments: Each island is equipped with at least 1 base station radio for communication with park headquarters and a marine band radio.



Imagery: NAIP 2016

4-844-A Site Summary - Santa Rosa Island: South East Beaches**4-844-A****County :** Santa Barbara **ACP Division/Segment :** CI - B - S000**NOAA Chart :** 18720**Map Book :** NA**Decimal Degrees** 33.91528 -120.04806**Site Description:**

This site is on the south side of Santa Rosa Island from East Point to South Point with primarily vertical rock cliff habitat with a few pocket sand beaches and wave-cut rock platforms. South Point State and Federal Marine Reserves are located west of this site. Nesting seabirds include pelagic cormorant (Mar-Sep) and black oystercatcher (Mar-Sep). Puffling and breeding marine mammals include California sea lions (May-Aug), elephant seals (Dec-July) and harbor seals (Dec-May) primarily at Ford Point. Extensive important intertidal resources are present including black abalone. Giant kelp beds are found offshore.

Resources at Risk:*ESI and Habitat:* 3A Fine- to medium-grained sand beaches

2A Exposed wave-cut platforms in bedrock, mud, or clay

1A Exposed Rocky Shore

List of Resources at Risk:

	Resource Name	Status	Presence
Birds	Western snowy plover	FT	Year-round
Birds	seabirds		Year-round
Invertebrates	black abalone	FE	Year-round
Invertebrates	rocky intertidal resources		Year-round
Mammals	Santa Rosa Island fox	FE, SE	Year-round
Mammals	marine mammals		Year-round

FT-Federally Threatened, FE-Federally Endangered, FP-Federally Protected, SE-State Endangered, ST-State Threatened, SP -State Protected, SR-State Rare, SSC-Species of Special Concern, BGEPA-Bald and Golden Eagle Protection Act, SSSP-State Special Status Species

List of Key Contacts:

Type	Name/Title	Organization	Phone
C	/	Central Coast Archeological Information Center	(805) 893-2474
T	Becky Ota/Marine Conservation Manager	California Department of Fish & Wildlife, MPAs	(650) 631-6789
T	Steve Wertz/Senior Environmental Scientist	California Department of Fish and Wildlife, Marine	(562) 343-3808
T	/24hr	Channel Islands National Marine Sanctuary	(805) 729-1271
T	/Deputy Superintendent	Channel Islands National Marine Sanctuary	(805) 448-9971
T	/Sanctuary Superintendent	Channel Islands National Marine Sanctuary	(805) 259-6540
T	Operations Manager/Emergency	Channel Islands National Marine Sanctuary	(805) 705-1790
T	Superintendent of Operations/Deputy	Channel Islands National Marine Sanctuary	(805) 689-8920
T	/Dispatch	Channel Islands National Park	(559) 565-4221
T	/	US Fish and Wildlife Service, Federal T&E Species	(805) 644-1766

C – Cultural, Historic, Archaeological; E – Entry/Owner/Access; O – Other; S – Safety; T – Trustee; X – Exclusion or Security

Additional Site Summary Comments:

Western snowy plovers nest from Mar-Sep.

Concerns and Advice to Responders:

Santa Rosa Island is located 40 miles west of Ventura and is home to large numbers of seals and sea lions as well as colonies of seabirds. This site has seasonal marine mammal pupping and breeding from December through August and nesting seabirds from March through November. Trustee agencies may not sanction onshore response activities. Refer to and comply with introductory section of 9814 before initiating any response activities.

Hazard and Restrictions:

Conditions in the Santa Barbara Channel and around the islands are variable and the ocean is unforgiving. Only experienced skippers with vessels capable of withstanding severe weather are advised to make the cross-channel passage. Major shipping lanes lie between the islands and the mainland.

Site Strategies:

Strategy: 4-844.1 Objective: No Onsite Options: Consider Offshore Containment/Recovery/ART

Strategy: Onshore protection strategies for this area are very limited. Attempt to collect and/or disperse oil in offshore locations before it reaches the shoreline. Before initiating any response activities within the Channel Islands National Marine Sanctuary or the Channel Islands National Park, refer to and comply with the Channel Islands Introductory section 9814. Protect the Marine Protected Area (MPA) boundaries.

Table of Response Resources

Last Page Update

Logistics:

Directions: Only by boat or aircraft. Closest harbors are Santa Barbara and Ventura. Channel Islands Aviation is located at Camarillo Airport and is able to fly and land on the islands. All access to the Channel Islands must be coordinated with National Parks and must follow biosecurity protocols. Refer to introductory section of 9814 for more information.

Land Access:

On-Water Limitations: Access to the island by water is available at the pier in Bechers Bay.

Facilities, Staging Areas, Command Posts, Available Equipment:

Communications Problems: Cell phone reception is unreliable. Marine VHF or Satellite phones are the best options.

Additional Operational Comments: Each island is equipped with at least 1 base station radio for communication with park headquarters and a marine band radio.



Imagery: NAIP 2012 (Summer) 4-Band

4-850-A Site Summary - Santa Cruz Island: Posa Anchorage Lagoon**4-850-A****County :** Santa Barbara **ACP Division/Segment :** CI - C - S000**NOAA Chart :** 18720**Map Book :** NA**Decimal Degrees** 33.97972 -119.86806**Site Description:**

This site occurs on the south-west side of Santa Cruz Island. Posa Anchorage has a moderate sized wetland (about 75 m inland of the ocean) with a well defined channel running through willows and scrub vegetation. This is an intermittent stream. The surrounding fine to medium-grained beach is approximately 50 m wide and two miles long, backed by bluffs in the area of the wetland, with rocky headlands further to the NW and SE. The site faces SW and is subject to strong winds and surf. There is a possibility that the lagoon will be open to the ocean during periods of high rainfall or with extreme high tides.

Resources at Risk:*ESI and Habitat:* 10A Salt - and brackish-water marshes

9B Vegetated low banks

3A Fine- to medium-grained sand beaches

1C Exposed rocky cliffs with boulder talus base

List of Resources at Risk:

	Resource Name	Status	Presence
Birds	Western snowy plover	FT	Year-round
Birds	brown pelican		Year-round
Birds	shorebirds		Year-round
Mammals	sea lion		Year-round
Mammals	harbor seal	FP	Year-round

FT-Federally Threatened, FE-Federally Endangered, FP-Federally Protected, SE-State Endangered, ST-State Threatened, SP -State Protected, SR-State Rare, SSC-Species of Special Concern, BGEPA-Bald and Golden Eagle Protection Act, SSSP-State Special Status Species

List of Key Contacts:

Type	Name/Title	Organization	Phone
C	/	Central Coast Archeological Information Center	(805) 893-2474
C	/	Native American Heritage Commission	(916) 373-3710
T	/24hr	Channel Islands National Marine Sanctuary	(805) 729-1271
T	/Deputy Superintendent	Channel Islands National Marine Sanctuary	(805) 448-9971
T	/Sanctuary Superintendent	Channel Islands National Marine Sanctuary	(805) 259-6540
T	Operations Manager/Emergency	Channel Islands National Marine Sanctuary	(805) 705-1790
T	Superintendent of Operations/Deputy	Channel Islands National Marine Sanctuary	(805) 689-8920
T	/Dispatch	Channel Islands National Park	(559) 565-4221
T	/	US Fish and Wildlife Service, Federal T&E Species	(805) 644-1766

C – Cultural, Historic, Archaeological; E – Entry/Owner/Access; O – Other; S – Safety; T – Trustee; X – Exclusion or Security

Additional Site Summary Comments:

The Nature Conservancy owns approximately 75% of Santa Cruz Island as a preservation area. The other 25% is owned by the National Park Service.

Western snowy plovers nest from Mar-Sep. California brown pelicans will roost in this area. Occasional California sea lions and harbor seals can be found offshore.

Concerns and Advice to Responders:

Santa Cruz Island is located 20 miles from the mainland and is home to large numbers of seals and sea lions as well as colonies of seabirds. At over 96 square miles, Santa Cruz Island is California's largest island and has 77 miles of craggy coastline cliffs, giant sea caves, pristine tidepools, and expansive beaches. Trustee agencies may not sanction onshore response activities. Refer to and comply with introductory section of 9814 before initiating any response activities.

Hazard and Restrictions:

Conditions in the Santa Barbara Channel and around the islands are variable and the ocean is unforgiving. Only experienced skippers with vessels capable of withstanding severe weather are advised to make the cross-channel passage. Major shipping lanes lie between the islands and the mainland.

Site Strategies:

Strategy: 4-850.1 Objective: Shoreline Pre-Clean: Resource Specialist Supervision Required

Strategy: Refer to Channel Islands Introduction Section of 9814 (especially Biosecurity) before conducting any shoreline precleaning. A natural resource trustee and/or an archaeologist (usually a CINP employee) may need to be on-site during work to ensure compliance with Channel Island response restrictions. Small hand crews of no more than 10 persons remove and store kelp, driftwood, vegetative debris, trash, and other materials which could become oiled and create environmental hazards and disposal problems. Segregate and dispose trash. Replace unoiled debris in its former location once the threat of oiling is past.

Table of Response Resources

Equipment	Sub-Type	Size	Unit	QTY	Unit	Last Page Update
Staff				5		

Strategy: 4-850.2 Objective: Build Berm

Strategy: Berming - Build an earthen berm across the mouth of the inlet using onsite materials obtained from unvegetated areas below the high tide line to minimize damage to wildlife and habitat. Install under flow pipes in the berm to allow through flows and/or a spillway with a filter barrier to accommodate flow increases as weather conditions dictate. Cover the berm with sheet plastic to minimize erosion. Second, back the berm with swamp and sorbent booms to prevent contamination from entrainment, leakage and or washover. Monitor berm and associated features to maintain their integrity and effectiveness.

Table of Response Resources

Equipment	Sub-Type	Size	Unit	QTY	Unit	Last Page Update
Boom	Sorbent Boom			240	feet	
Sandbags				200		
Plastic sheeting	visqueen			1	Rolls	
Piping	6"			3		

Logistics:

Directions: Only by boat or aircraft. Closest harbors are Santa Barbara and Ventura. Channel Islands Aviation is located at Camarillo Airport and is able to fly and land on the islands. All access to the Channel Islands must be coordinated with National Parks and must follow biosecurity protocols. Refer to introductory section of 9814 for more information.

Land Access:

On-Water Limitations: Vessel landing available at Prisoners Harbor (Northeast face of center of island) and Scorpion Harbor (Northeast end of island). Caution: monitor sea conditions and depth before attempting approach.

Facilities, Staging Areas, Command Posts, Available Equipment:

Communications Problems: Cell phone reception unreliable. Marine VHF or satellite phone best options.

Additional Operational Comments: Each island is equipped with at least 1 base station radio for communication with park headquarters and a marine band radio.



Imagery: NAIP 2010 (Summer) 4-Band

4-852-A Site Summary - Santa Cruz Island: Christi Beach**4-852-A****County :** Santa Barbara **ACP Division/Segment :** CI - C - S000**NOAA Chart :** 18720**Map Book :** NA**Decimal Degrees** 34.02194 -119.87**Site Description:**

This site is on the West side of Santa Cruz Island. The Christi Ranch area is primarily mixed sand, gravel, cobble, and boulder beach. There is a large California sea lion and harbor seal haulout area near Kinton Point. Pupping and breeding marine mammals are present for California sea lions (May-Aug), harbor seals (Dec-May) and elephant seals (Dec-July). Dolphins can be present. Seabirds nest from Mar-Nov. California brown pelicans roost in this area. Giant kelp beds can be found offshore.

Resources at Risk:*ESI and Habitat:* 6A Gravel Beach

5 Mixed sand and gravel beaches

3A Fine- to medium-grained sand beaches

1C Exposed rocky cliffs with boulder talus base

List of Resources at Risk:

	Resource Name	Status	Presence
Birds	Western snowy plover	FT	Year-round
Birds	seabirds		Year-round
Birds	shorebirds		Year-round
Invertebrates	rocky intertidal resources		Year-round
Mammals	California sea lion	FP	Year-round
Mammals	harbor seal	FP	Year-round

FT-Federally Threatened, FE-Federally Endangered, FP-Federally Protected, SE-State Endangered, ST-State Threatened, SP -State Protected, SR-State Rare, SSC-Species of Special Concern, BGEPA-Bald and Golden Eagle Protection Act, SSSP-State Special Status Species

List of Key Contacts:

Type	Name/Title	Organization	Phone
C	/	Central Coast Archeological Information Center	(805) 893-2474
C	/	Native American Heritage Commission	(916) 373-3710
T	/24hr	Channel Islands National Marine Sanctuary	(805) 729-1271
T	/Deputy Superintendent	Channel Islands National Marine Sanctuary	(805) 448-9971
T	/Sanctuary Superintendent	Channel Islands National Marine Sanctuary	(805) 259-6540
T	Operations Manager/Emergency	Channel Islands National Marine Sanctuary	(805) 705-1790
T	Superintendent of Operations/Deputy	Channel Islands National Marine Sanctuary	(805) 689-8920
T	/Dispatch	Channel Islands National Park	(559) 565-4221
T	/	US Fish & Wildlife Service	(805) 644-1766

C – Cultural, Historic, Archaeological; E – Entry/Owner/Access; O – Other; S – Safety; T – Trustee; X – Exclusion or Security

Additional Site Summary Comments:

The Nature Conservancy owns approximately 75% of Santa Cruz Island as a preservation area. The other 25% is owned by the National Park Service.

Western snowy plovers nest from Mar-Sep.

Concerns and Advice to Responders:

Santa Cruz Island is located 20 miles from the mainland and is home to large numbers of seals and sea lions as well as colonies of seabirds. At over 96 square miles, Santa Cruz Island is California's largest island and has 77 miles of craggy coastline cliffs, giant sea caves, pristine tidepools, and expansive beaches. Trustee agencies may not sanction onshore response activities. Refer to and comply with introductory section of 9814 before initiating any response activities.

Hazard and Restrictions:

Conditions in the Santa Barbara Channel and around the islands are variable and the ocean is unforgiving. Only experienced skippers with vessels capable of withstanding severe weather are advised to make the cross-channel passage. Major shipping lanes lie between the islands and the mainland.

Site Strategies:

Strategy: 4-852.1 Objective: Build Berm

Strategy: Build an earthen berm across the mouth of the inlet using onsite materials obtained from unvegetated areas below the high tide line to minimize damage to wildlife and habitat. Install under flow pipes in the berm to allow through flows and/or a spillway with a filter barrier to accommodate flow increases as weather conditions dictate. Cover the berm with sheet plastic to minimize erosion. Second, back the berm with swamp and sorbent booms to prevent contamination from entrainment, leakage and or washover. Monitor berm and associated features to maintain their integrity and effectiveness.

Table of Response Resources

Equipment	Sub-Type	Size	Unit	QTY	Unit	Last Page Update
Boom	Sorbent Boom			240	feet	
Sandbags				200		
Plastic sheeting	visqueen			1	Rolls	
Piping	6"			3		
Staff				5		

Logistics:

Directions: Only by boat or aircraft. Closest harbors are Santa Barbara and Ventura. Channel Islands Aviation is located at Camarillo Airport and is able to fly and land on the islands. All access to the Channel Islands must be coordinated with National Parks and must follow biosecurity protocols. Refer to introductory section of 9814 for more information.

Land Access:

On-Water Limitations: Vessel landing available at Prisoners Harbor (Northeast face of center of island) and Scorpion Harbor (Northeast end of island). Caution: monitor sea conditions and depth before attempting approach.

Facilities, Staging Areas, Command Posts, Available Equipment:

Communications Problems: Cell phone reception unreliable. Marine VHF or satellite phone best options.

Additional Operational Comments: Each island is equipped with at least 1 base station radio for communication with park headquarters and a marine band radio.



Imagery: NAIP 2016

4-855-A Site Summary - Santa Cruz Island: Forney Cove**4-855-A****County :** Santa Barbara **ACP Division/Segment :** CI - C - S000**NOAA Chart :** 18720**Map Book :** NA**Decimal Degrees** 34.048333 -119.888333**Site Description:**

This site extends from Forney Cove to Black Point. This area includes vertical rock cliffs, wave-cut platforms and sand or gravel beaches. Some of the offshore areas of this site are included in the Painted Cave State Marine Conservation Area. Harbor seals pup and bred from Dec-May. Birds nest from Mar-Nov including California brown pelican, pigeon guillemot, ash storm petrel, Cassin's auklet, black oystercatcher, Brandt's and pelagic cormorant. Shorebirds are present. Rocky intertidal resources are present offshore including black abalone.

Resources at Risk:*ESI and Habitat:* 5 Mixed sand and gravel beaches

2A Exposed wave-cut platforms in bedrock, mud, or clay

1A Exposed Rocky Shore

List of Resources at Risk:

	Resource Name	Status	Presence
Birds	Western snowy plover	FT	Year-round
Birds	seabirds		Year-round
Birds	shorebirds		Year-round
Invertebrates	black abalone	FE	Year-round
Invertebrates	rocky intertidal resources		Year-round
Mammals	marine mammals		Year-round

FT-Federally Threatened, FE-Federally Endangered, FP-Federally Protected, SE-State Endangered, ST-State Threatened, SP -State Protected, SR-State Rare, SSC-Species of Special Concern, BGEPA-Bald and Golden Eagle Protection Act, SSSP-State Special Status Species

List of Key Contacts:

Type	Name/Title	Organization	Phone
C	/	Central Coast Archeological Information Center	(805) 893-2474
C	/	Native American Heritage Commission	(916) 373-3710
T	Becky Ota/Marine Conservation Manager	California Department of Fish & Wildlife, MPAs	(650) 631-6789
T	/24hr	Channel Islands National Marine Sanctuary	(805) 729-1271
T	/Deputy Superintendent	Channel Islands National Marine Sanctuary	(805) 448-9971
T	/Sanctuary Superintendent	Channel Islands National Marine Sanctuary	(805) 259-6540
T	Operations Manager/Emergency	Channel Islands National Marine Sanctuary	(805) 705-1790
T	Superintendent of Operations/Deputy	Channel Islands National Marine Sanctuary	(805) 689-8920
T	/Dispatch	Channel Islands National Park	(559) 565-4221
T	/	US Fish & Wildlife Service	(805) 644-1766

C – Cultural, Historic, Archaeological; E – Entry/Owner/Access; O – Other; S – Safety; T – Trustee; X – Exclusion or Security

Additional Site Summary Comments:

The Nature Conservancy owns approximately 75% of Santa Cruz Island as a preservation area. The other 25% is owned by the National Park Service.

Western snowy plovers nest from Mar-Sep.

Concerns and Advice to Responders:

Santa Cruz Island is located 20 miles from the mainland and is home to large numbers of seals and sea lions as well as colonies of seabirds. At over 96 square miles, Santa Cruz Island is California's largest island and has 77 miles of craggy coastline cliffs, giant sea caves, pristine tidepools, and expansive beaches. Trustee agencies may not sanction onshore response activities. Refer to and comply with introductory section of 9814 before initiating any response activities.

Hazard and Restrictions:

Conditions in the Santa Barbara Channel and around the islands are variable and the ocean is unforgiving. Only experienced skippers with vessels capable of withstanding severe weather are advised to make the cross-channel passage. Major shipping lanes lie between the islands and the mainland.

Site Strategies:

Strategy: 4-855.1 Objective: Shoreline Pre-Clean: Resource Specialist Supervision Required

Strategy: Refer to Channel Islands Introduction Section of 9814 (especially Biosecurity) before conducting any shoreline precleaning. A natural resource trustee and/or an archaeologist (usually a CINP employee) may need to be on-site during work to ensure compliance with Channel Island response restrictions. Small hand crews of no more than 10 persons remove and store kelp, driftwood, vegetative debris, trash, and other materials which could become oiled and create environmental hazards and disposal problems. Segregate and dispose trash. Replace unoiled debris in its former location once the threat of oiling is past.

Table of Response Resources

Equipment	Sub-Type	Size	Unit	QTY	Unit	Last Page Update
Staff				5		

Logistics:

Directions: Only by boat or aircraft. Closest harbors are Santa Barbara and Ventura. Channel Islands Aviation is located at Camarillo Airport and is able to fly and land on the islands. All access to the Channel Islands must be coordinated with National Parks and must follow biosecurity protocols. Refer to introductory section of 9814 for more information.

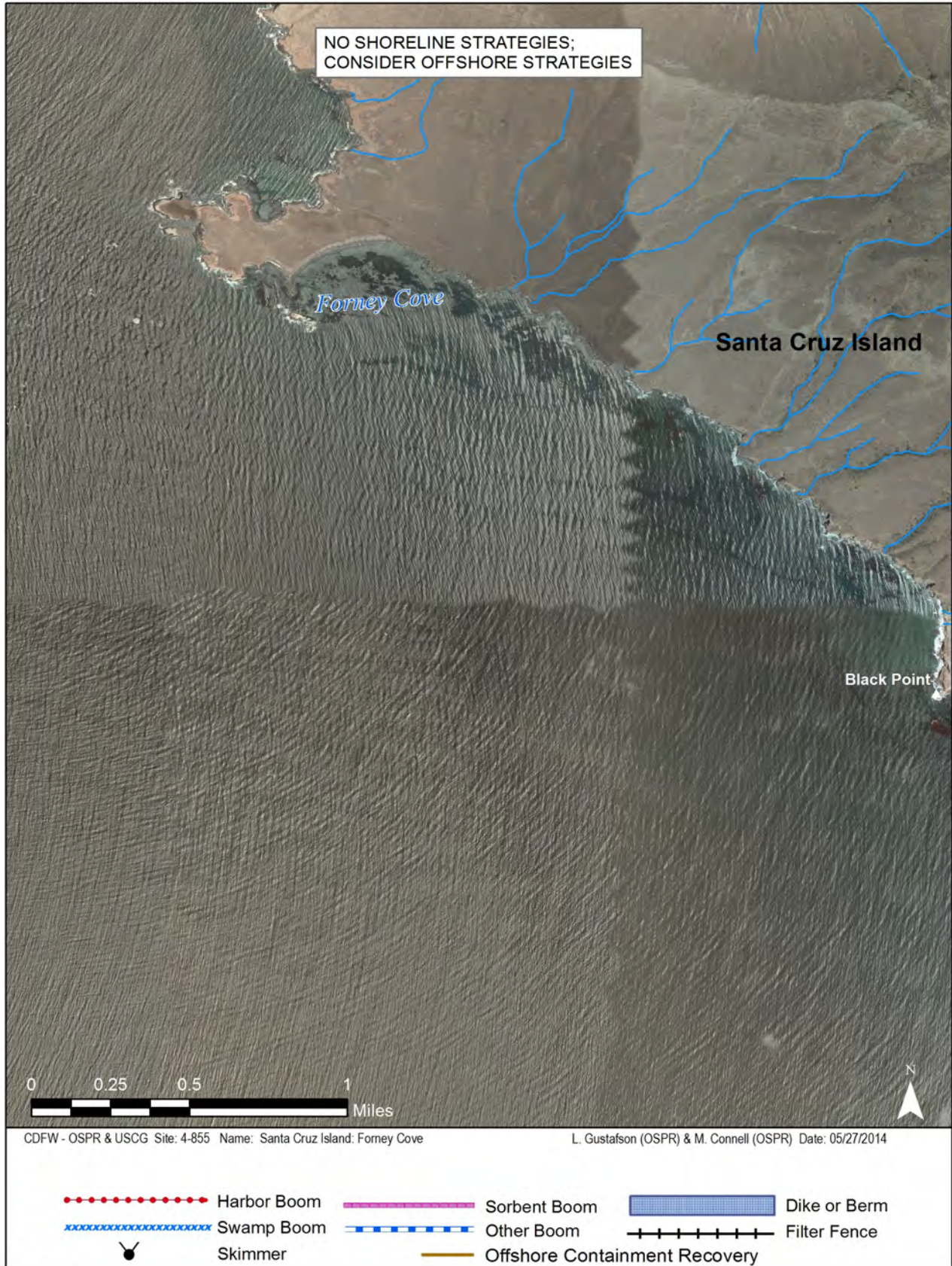
Land Access:

On-Water Limitations: Vessel landing available at Prisoners Harbor (Northeast face of center of island) and Scorpion Harbor (Northeast end of island). Caution: monitor sea conditions and depth before attempting approach.

Facilities, Staging Areas, Command Posts, Available Equipment:

Communications Problems: Cell phone reception unreliable. Marine VHF or satellite phone best options.

Additional Operational Comments: Each island is equipped with at least 1 base station radio for communication with park headquarters and a marine band radio.



Imagery: NAIP 2010 (Summer) 4-Band

4-858-A Site Summary - Santa Cruz Island: Prisoners Harbor**4-858-A****County :** Santa Barbara **ACP Division/Segment :** CI - C - S000**NOAA Chart :** 18720**Map Book :** NA**Decimal Degrees** 34.02139 -119.68389**Site Description:**

This site is on the north central side of Santa Cruz island. Prisoners harbor has mixed sand and gravel beaches and a small creek and wetland. Nearby Chinese harbor is primarily mixed sand and gravel beach. Seabirds and shorebirds are present including pelagic cormorant, ash storm petrel, Cassin's auklet and black oystercatcher. Harbor seals and the occasional California sea lion may be present. Black abalone and extensive eelgrass and surfgrass beds are present.

Resources at Risk:*ESI and Habitat:* 10A Salt - and brackish-water marshes

9B Vegetated low banks

5 Mixed sand and gravel beaches

List of Resources at Risk:

	Resource Name	Status	Presence
Birds	seabirds		Year-round
Birds	shorebirds		Year-round
Invertebrates	black abalone	FE	Year-round
Mammals	California sea lion	FP	Year-round
Mammals	harbor seal	FP	Year-round
Mammals	marine mammals		Year-round
Plants	eelgrass		Year-round
Plants	surfgrass		Year-round

FT-Federally Threatened, FE-Federally Endangered, FP-Federally Protected, SE-State Endangered, ST-State Threatened, SP -State Protected, SR-State Rare, SSC-Species of Special Concern, BGEPA-Bald and Golden Eagle Protection Act, SSSP-State Special Status Species

List of Key Contacts:

Type	Name/Title	Organization	Phone
C	/	Central Coast Archeological Information Center	(805) 893-2474
C	/	Native American Heritage Commission	(916) 373-3710
T	/24hr	Channel Islands National Marine Sanctuary	(805) 729-1271
T	/Deputy Superintendent	Channel Islands National Marine Sanctuary	(805) 448-9971
T	/Sanctuary Superintendent	Channel Islands National Marine Sanctuary	(805) 259-6540
T	Operations Manager/Emergency	Channel Islands National Marine Sanctuary	(805) 705-1790
T	Superintendent of Operations/Deputy	Channel Islands National Marine Sanctuary	(805) 689-8920
T	/Dispatch	Channel Islands National Park	(559) 565-4221
T	/	US Fish & Wildlife Service	(805) 644-1766

C – Cultural, Historic, Archaeological; E – Entry/Owner/Access; O – Other; S – Safety; T – Trustee; X – Exclusion or Security

Additional Site Summary Comments:

The Nature Conservancy owns approximately 75% of Santa Cruz Island as a preservation area. The other 25% is owned by the National Park Service.

December through August for marine mammal pupping and breeding. March through November for nesting seabirds. All year for important intertidal resources.

Concerns and Advice to Responders:

Santa Cruz Island is located 20 miles from the mainland and is home to large numbers of seals and sea lions as well as colonies of seabirds. At over 96 square miles, Santa Cruz Island is California's largest island and has 77 miles of craggy coastline cliffs, giant sea caves, pristine tidepools, and expansive beaches. Trustee agencies may not sanction onshore response activities. Refer to and comply with introductory section of 9814 before initiating any response activities.

Hazard and Restrictions:

Conditions in the Santa Barbara Channel and around the islands are variable and the ocean is unforgiving. Only experienced skippers with vessels capable of withstanding severe weather are advised to make the cross-channel passage. Major shipping lanes lie between the islands and the mainland.

Site Strategies:

Strategy: 4-858.1 Objective: Shoreline Pre-Clean: Resource Specialist Supervision Required

Strategy: Refer to Channel Islands Introduction Section of 9814 (especially Biosecurity) before conducting any shoreline precleaning. A natural resource trustee and/or an archaeologist (usually a CINP employee) may need to be on-site during work to ensure compliance with Channel Island response restrictions. Small hand crews of no more than 10 persons remove and store kelp, driftwood, vegetative debris, trash, and other materials which could become oiled and create environmental hazards and disposal problems. Segregate and dispose trash. Replace unoiled debris in its former location once the threat of oiling is past.

Table of Response Resources

Equipment	Sub-Type	Size	Unit	QTY	Unit	Last Page Update
Staff				5		

Logistics:

Directions: Only by boat or aircraft. Closest harbors are Santa Barbara and Ventura. Channel Islands Aviation is located at Camarillo Airport and is able to fly and land on the islands. All access to the Channel Islands must be coordinated with National Parks and must follow biosecurity protocols. Refer to introductory section of 9814 for more information.

Land Access:

On-Water Limitations: Vessel landing available at Prisoners Harbor (Northeast face of center of island) and Scorpion Harbor (Northeast end of island). Caution: monitor sea conditions and depth before attempting approach.

Facilities, Staging Areas, Command Posts, Available Equipment:

Communications Problems: Cell phone reception is unreliable. Marine VHF or satellite phone are best options.

Additional Operational Comments: Each island is equipped with at least 1 base station radio for communication with park headquarters and a marine band radio.



Imagery: NAIP 2010 (Summer) 4-Band

4-864-B Site Summary - Santa Cruz Island: Scorpion Harbor Area**4-864-B****County :** Santa Barbara **ACP Division/Segment :** CI - C - S000**NOAA Chart :** 18720**Map Book :** NA**Decimal Degrees** 34.016667 -119.62**Site Description:**

This site extends from Scorpion Anchorage to Pedro Point. Primarily exposed rock cliffs with a few pocket sand beaches. Some of the offshore areas of this site are included in the Scorpion State Marine Reserve. Seabirds and shorebirds present include California brown pelican, pigeon guillemot, ashy storm petrel, Cassin's auklet, Brandt's and pelagic cormorant, black oystercatcher, bald eagle and peregrine falcon. Scorpion rock is of particular importance to roosting and nesting seabirds. Black abalone and extensive kelp and eelgrass beds are present offshore.

Resources at Risk:

ESI and Habitat: 3A Fine- to medium-grained sand beaches
1A Exposed Rocky Shore

List of Resources at Risk:

	Resource Name	Status	Presence
Birds	seabirds		Year-round
Birds	shorebirds		Year-round
Invertebrates	black abalone	FE	Year-round
Invertebrates	rocky intertidal resources		Year-round
Mammals	California sea lion	FP	Year-round
Mammals	harbor seal	FP	Year-round

FT-Federally Threatened, FE-Federally Endangered, FP-Federally Protected, SE-State Endangered, ST-State Threatened, SP -State Protected, SR-State Rare, SSC-Species of Special Concern, BGEPA-Bald and Golden Eagle Protection Act, SSSP-State Special Status Species

List of Key Contacts:

Type	Name/Title	Organization	Phone
C	/	Central Coast Archeological Information Center	(805) 893-2474
C	/	Native American Heritage Commission	(916) 373-3710
T	Becky Ota/Marine Conservation Manager	California Department of Fish & Wildlife, MPAs	(650) 631-6789
T	/24hr	Channel Islands National Marine Sanctuary	(805) 729-1271
T	/Deputy Superintendent	Channel Islands National Marine Sanctuary	(805) 448-9971
T	/Sanctuary Superintendent	Channel Islands National Marine Sanctuary	(805) 259-6540
T	Operations Manager/Emergency	Channel Islands National Marine Sanctuary	(805) 705-1790
T	Superintendent of Operations/Deputy	Channel Islands National Marine Sanctuary	(805) 689-8920
T	/Dispatch	Channel Islands National Park	(559) 565-4221
T	/	US Fish & Wildlife Service	(805) 644-1766

C – Cultural, Historic, Archaeological; E – Entry/Owner/Access; O – Other; S – Safety; T – Trustee; X – Exclusion or Security

Additional Site Summary Comments:

The Nature Conservancy owns approximately 75% of Santa Cruz Island as a preservation area. The other 25% is owned by the National Park Service.

December through August for marine mammal pupping and breeding. March through November for nesting seabirds. All year for important intertidal resources.

Concerns and Advice to Responders:

Santa Cruz Island is located 20 miles from the mainland and is home to large numbers of seals and sea lions as well as colonies of seabirds. At over 96 square miles, Santa Cruz Island is California's largest island and has 77 miles of craggy coastline cliffs, giant sea caves, pristine tidepools, and expansive beaches. Trustee agencies may not sanction onshore response activities. Refer to and comply with introductory section of 9814 before initiating any response activities.

Hazard and Restrictions:

Conditions in the Santa Barbara Channel and around the islands are variable and the ocean is unforgiving. Only experienced skippers with vessels capable of withstanding severe weather are advised to make the cross-channel passage. Major shipping lanes lie between the islands and the mainland.

Site Strategies:

Strategy: 4-864.1 Objective: Shoreline Pre-Clean: Resource Specialist Supervision Required

Strategy: Refer to Channel Islands Introduction Section of 9814 (especially Biosecurity) before conducting any shoreline precleaning. A natural resource trustee and/or an archaeologist (usually a CINP employee) may need to be on-site during work to ensure compliance with Channel Island response restrictions. Small hand crews of no more than 10 persons remove and store kelp, driftwood, vegetative debris, trash, and other materials which could become oiled and create environmental hazards and disposal problems. Segregate and dispose trash. Replace unoiled debris in its former location once the threat of oiling is past.

Table of Response Resources

Equipment	Sub-Type	Size	Unit	QTY	Unit	Last Page Update
Staff				5		

Logistics:

Directions: Only by boat or aircraft. Closest harbors are Santa Barbara and Ventura. Channel Islands Aviation is located at Camarillo Airport and is able to fly and land on the islands. All access to the Channel Islands must be coordinated with National Parks and must follow biosecurity protocols. Refer to introductory section of 9814 for more information.

Land Access:

On-Water Limitations: Vessel landing available at Prisoners Harbor (Northeast face of center of island) and Scorpion Harbor (Northeast end of island). Caution: monitor sea conditions and depth before attempting approach.

Facilities, Staging Areas, Command Posts, Available Equipment:

Communications Problems: Cell phone reception is unreliable. Marine VHF or satellite phone are best options.

Additional Operational Comments: Each island is equipped with at least 1 base station radio for communication with park headquarters and a marine band radio.



Imagery: NAIP 2010 (Summer) 4-Band

4-867-B Site Summary - Santa Cruz Island: Smuggler's Cove**4-867-B****County :** Santa Barbara **ACP Division/Segment :** CI - C - S000**NOAA Chart :** 18720**Map Book :** NA**Decimal Degrees** 34.021889 -119.542**Site Description:**

This site extends from Pedro Point to Middle Anchorage. Primarily vertical cliffs, coarse grained sand and cobble beaches. Cormorants, brown pelicans and surf scoters may be present. Black abalone and extensive eelgrass and surfgrass beds are present offshore.

Resources at Risk:*ESI and Habitat:* 4 Coarse-grained sand beaches

1C Exposed rocky cliffs with boulder talus base

List of Resources at Risk:

	Resource Name	Status	Presence
Birds	seabirds		Year-round
Invertebrates	black abalone	FE	Year-round
Invertebrates	rocky intertidal resources		Year-round

FT-Federally Threatened, FE-Federally Endangered, FP-Federally Protected, SE-State Endangered, ST-State Threatened, SP -State Protected, SR-State Rare, SSC-Species of Special Concern, BGEPA-Bald and Golden Eagle Protection Act, SSSP-State Special Status Species

List of Key Contacts:

Type	Name/Title	Organization	Phone
C	/	Central Coast Archeological Information Center	(805) 893-2474
C	/	Native American Heritage Commission	(916) 373-3710
T	/24hr	Channel Islands National Marine Sanctuary	(805) 729-1271
T	/Deputy Superintendent	Channel Islands National Marine Sanctuary	(805) 448-9971
T	/Sanctuary Superintendent	Channel Islands National Marine Sanctuary	(805) 259-6540
T	Operations Manager/Emergency	Channel Islands National Marine Sanctuary	(805) 705-1790
T	Superintendent of Operations/Deputy	Channel Islands National Marine Sanctuary	(805) 689-8920
T	/Dispatch	Channel Islands National Park	(559) 565-4221
T	/	US Fish & Wildlife Service	(805) 644-1766

C – Cultural, Historic, Archaeological; E – Entry/Owner/Access; O – Other; S – Safety; T – Trustee; X – Exclusion or Security

Additional Site Summary Comments:

The Nature Conservancy owns approximately 75% of Santa Cruz Island as a preservation area. The other 25% is owned by the National Park Service.

Concerns and Advice to Responders:

Santa Cruz Island is located 20 miles from the mainland and is home to large numbers of seals and sea lions as well as colonies of seabirds. At over 96 square miles, Santa Cruz Island is California's largest island and has 77 miles of craggy coastline cliffs, giant sea caves, pristine tidepools, and expansive beaches. Trustee agencies may not sanction onshore response activities. Refer to and comply with introductory section of 9814 before initiating any response activities.

Hazard and Restrictions:

Conditions in the Santa Barbara Channel and around the islands are variable and the ocean is unforgiving. Only experienced skippers with vessels capable of withstanding severe weather are advised to make the cross-channel passage. Major shipping lanes lie between the islands and the mainland.

Site Strategies:

Strategy: 4-867.1 Objective: Shoreline Pre-Clean: Resource Specialist Supervision Required

Strategy: Refer to Channel Islands Introduction Section of 9814 (especially Biosecurity) before conducting any shoreline precleaning. A natural resource trustee and/or an archaeologist (usually a CINP employee) may need to be on-site during work to ensure compliance with Channel Island response restrictions. Small hand crews of no more than 10 persons remove and store kelp, driftwood, vegetative debris, trash, and other materials which could become oiled and create environmental hazards and disposal problems. Segregate and dispose trash. Replace unoiled debris in its former location once the threat of oiling is past.

Table of Response Resources

Equipment	Sub-Type	Size	Unit	QTY	Unit	Last Page Update
Staff				5		

Logistics:

Directions: Only by boat or aircraft. Closest harbors are Santa Barbara and Ventura. Channel Islands Aviation is located at Camarillo Airport and is able to fly and land on the islands. All access to the Channel Islands must be coordinated with National Parks and must follow biosecurity protocols. Refer to introductory section of 9814 for more information.

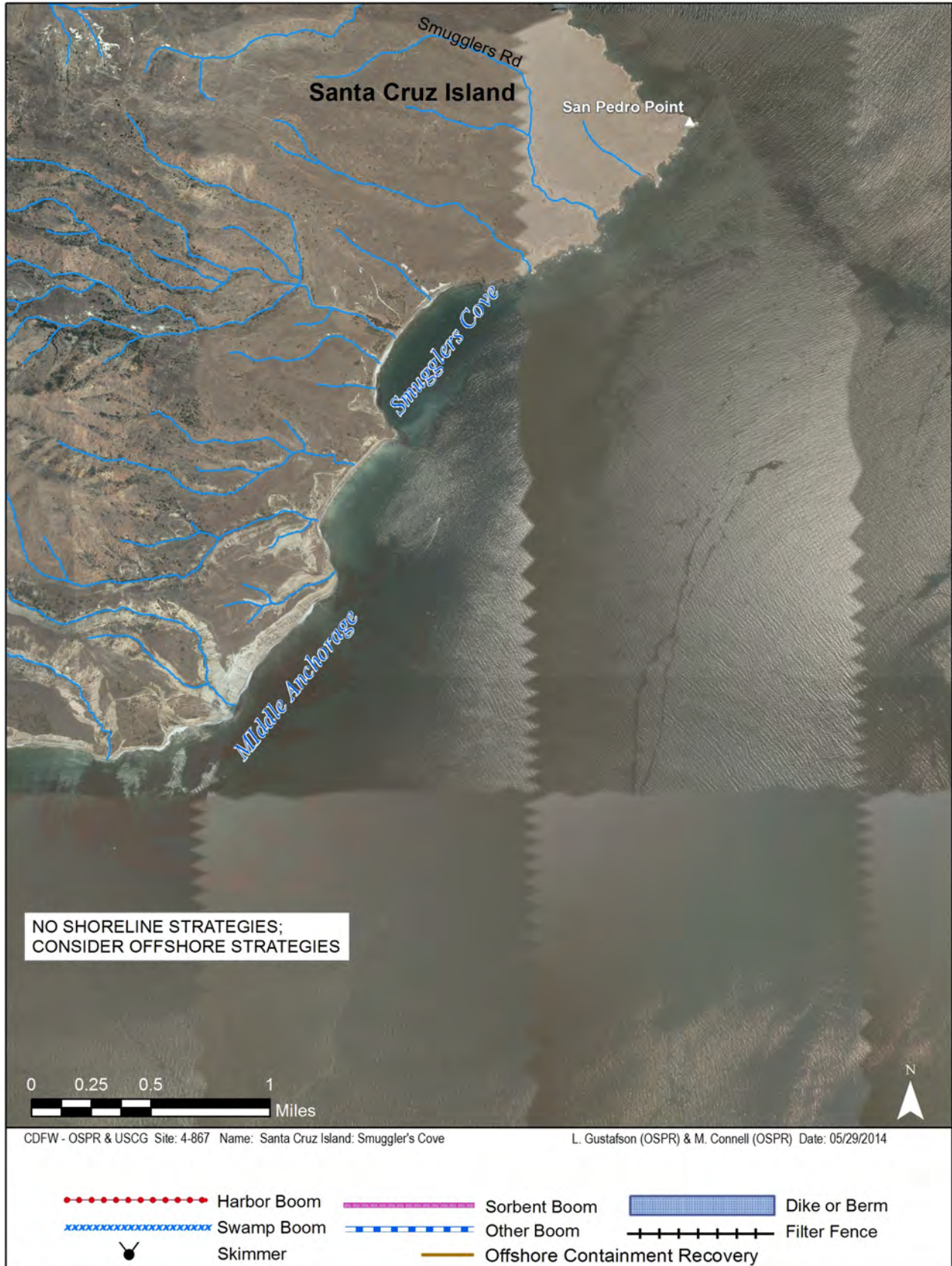
Land Access:

On-Water Limitations: Vessel landing available at Prisoners Harbor (Northeast face of center of island) and Scorpion Harbor (Northeast end of island). Caution: monitor sea conditions and depth before attempting approach.

Facilities, Staging Areas, Command Posts, Available Equipment:

Communications Problems: Cell phone reception is unreliable. Marine VHF or satellite phone are best options.

Additional Operational Comments: Each island is equipped with at least 1 base station radio for communication with park headquarters and a marine band radio.



Imagery: NAIP 2010 (Summer) 4-Band

4-878-A Site Summary - Santa Cruz Island: Punta Arena to Near Point**4-878-A****County :** Santa Barbara **ACP Division/Segment :** CI - C - S000**NOAA Chart :** 18720**Map Book :** NA**Decimal Degrees** 33.95056 -119.82444**Site Description:**

This site extends from Punta Arena to Near Point on the south-west corner of Santa Cruz Island. The Punta Arena area is primarily wave-cut platforms and medium to coarse-grained sand beaches. Gull Island is an offshore large exposed vertical pinnacle rock. Some offshore areas of this site are included in the Gull Island State Marine Reserve. California brown pelicans roost year-round. Nesting seabirds include Brandt's and pelagic cormorants, Cassin's auklet and western gull. Rocky intertidal habitat can be found offshore including black abalone.

Resources at Risk:*ESI and Habitat:* 4 Coarse-grained sand beaches

2A Exposed wave-cut platforms in bedrock, mud, or clay

1A Exposed Rocky Shore

List of Resources at Risk:

	Resource Name	Status	Presence
Birds	seabirds		Year-round
Invertebrates	black abalone	FE	Year-round
Mammals	California sea lion	FP	Year-round
Mammals	harbor seal	FP	Year-round

FT-Federally Threatened, FE-Federally Endangered, FP-Federally Protected, SE-State Endangered, ST-State Threatened, SP -State Protected, SR-State Rare, SSC-Species of Special Concern, BGEPA-Bald and Golden Eagle Protection Act, SSSP-State Special Status Species

List of Key Contacts:

Type	Name/Title	Organization	Phone
C	/	Central Coast Archeological Information Center	(805) 893-2474
C	/	Native American Heritage Commission	(916) 373-3710
T	Becky Ota/Marine Conservation Manager	California Department of Fish & Wildlife, MPAs	(650) 631-6789
T	/24hr	Channel Islands National Marine Sanctuary	(805) 729-1271
T	/Deputy Superintendent	Channel Islands National Marine Sanctuary	(805) 448-9971
T	/Sanctuary Superintendent	Channel Islands National Marine Sanctuary	(805) 259-6540
T	Operations Manager/Emergency	Channel Islands National Marine Sanctuary	(805) 705-1790
T	Superintendent of Operations/Deputy	Channel Islands National Marine Sanctuary	(805) 689-8920
T	/Dispatch	Channel Islands National Park	(559) 565-4221
T	/	US Fish & Wildlife Service	(805) 644-1766

C – Cultural, Historic, Archaeological; E – Entry/Owner/Access; O – Other; S – Safety; T – Trustee; X – Exclusion or Security

Additional Site Summary Comments:

The Nature Conservancy owns approximately 75% of Santa Cruz Island as a preservation area. The other 25% is owned by the National Park Service.

December through May for harbor seals pupping and breeding. March through November for nesting seabirds. All year as haul out site for harbor seals and California sea lions and for high concentrations of seabirds.

Concerns and Advice to Responders:

Santa Cruz Island is located 20 miles from the mainland and is home to large numbers of seals and sea lions as well as colonies of seabirds. At over 96 square miles, Santa Cruz Island is California's largest island and has 77 miles of craggy coastline cliffs, giant sea caves, pristine tidepools, and expansive beaches. Trustee agencies may not sanction onshore response activities. Refer to and comply with introductory section of 9814 before initiating any response activities.

Hazard and Restrictions:

Conditions in the Santa Barbara Channel and around the islands are variable and the ocean is unforgiving. Only experienced skippers with vessels capable of withstanding severe weather are advised to make the cross-channel passage. Major shipping lanes lie between the islands and the mainland.

Site Strategies:

Strategy: 4-878.1 Objective: Shoreline Pre-Clean: Resource Specialist Supervision Required

Strategy: Refer to Channel Islands Introduction Section of 9814 (especially Biosecurity) before conducting any shoreline precleaning. A natural resource trustee and/or an archaeologist (usually a CINP employee) may need to be on-site during work to ensure compliance with Channel Island response restrictions. Small hand crews of no more than 10 persons remove and store kelp, driftwood, vegetative debris, trash, and other materials which could become oiled and create environmental hazards and disposal problems. Segregate and dispose trash. Replace unoiled debris in its former location once the threat of oiling is past.

Table of Response Resources

Equipment	Sub-Type	Size	Unit	QTY	Unit	Last Page Update
Staff				5		

Logistics:

Directions: Only by boat or aircraft. Closest harbors are Santa Barbara and Ventura. Channel Islands Aviation is located at Camarillo Airport and is able to fly and land on the islands. All access to the Channel Islands must be coordinated with National Parks and must follow biosecurity protocols. Refer to introductory section of 9814 for more information.

Land Access:

On-Water Limitations: Vessel landing available at Prisoners Harbor (Northeast face of center of island) and Scorpion Harbor (Northeast end of island). Caution: monitor sea conditions and depth before attempting approach.

Facilities, Staging Areas, Command Posts, Available Equipment:

Communications Problems: Cell phone reception is unreliable. Marine VHF or satellite phone are best options.

Additional Operational Comments: Each island is equipped with at least 1 base station radio for communication with park headquarters and a marine band radio.



Imagery: NAIP 2010 (Summer) 4-Band

4-880-A Site Summary - Anacapa Island**4-880-A****County :** Ventura **ACP Division/Segment :** CI - D - S000**NOAA Chart :** 18720**Map Book :** NA**Decimal Degrees** 34.00444 -119.39861**Site Description:**

The three islets (west, middle, and east) that make up Anacapa Island are oriented in an east-west direction, making it very long and narrow. The north side is primarily exposed vertical rock cliffs, with a few pocket beaches, while the south side is a combination of wave-cut rock platforms, vertical cliffs, and pocket beaches. Much of the northern offshore area of Anacapa Island is included in either the Anacapa Island State and Federal Marine Reserves or the Marine Conservation Areas. A special closure also exist for Anacapa Island. Footprint State and Federal Marine Reserves is located southwest of this site. California brown pelican, Cassin's auklet, Scripps's murrelet, double-crested, Brandt's and pelagic cormorant, black oystercatcher, pigeon guillemot and western gull nest on this island. There is a rich and diverse rocky intertidal habitat including surf grass and eelgrass beds and black abalone.

Resources at Risk:*ESI and Habitat:* 4 Coarse-grained sand beaches

2A Exposed wave-cut platforms in bedrock, mud, or clay

1C Exposed rocky cliffs with boulder talus base

List of Resources at Risk:

	Resource Name	Status	Presence
Birds	seabirds		Year-round
Invertebrates	black abalone	FE	Year-round
Invertebrates	rocky intertidal resources		Year-round
Mammals	California sea lion	FP	Year-round
Mammals	harbor seal	FP	Year-round
Plants	eelgrass		Year-round

FT-Federally Threatened, FE-Federally Endangered, FP-Federally Protected, SE-State Endangered, ST-State Threatened, SP -State Protected, SR-State Rare, SSC-Species of Special Concern, BGEPA-Bald and Golden Eagle Protection Act, SSSP-State Special Status Species

List of Key Contacts:

Type	Name/Title	Organization	Phone
C	/	Central Coast Archeological Information Center	(805) 893-2474
C	/	Native American Heritage Commission	(916) 373-3710
T	Becky Ota/Marine Conservation Manager	California Department of Fish & Wildlife, MPAs	(650) 631-6789
T	/24hr	Channel Islands National Marine Sanctuary	(805) 729-1271
T	/Deputy Superintendent	Channel Islands National Marine Sanctuary	(805) 448-9971
T	/Sanctuary Superintendent	Channel Islands National Marine Sanctuary	(805) 259-6540
T	Operations Manager/Emergency	Channel Islands National Marine Sanctuary	(805) 705-1790
T	Superintendent of Operations/Deputy	Channel Islands National Marine Sanctuary	(805) 689-8920
T	/Dispatch	Channel Islands National Park	(559) 565-4221
T	/	US Fish & Wildlife Service	(805) 644-1766

C – Cultural, Historic, Archaeological; E – Entry/Owner/Access; O – Other; S – Safety; T – Trustee; X – Exclusion or Security

Additional Site Summary Comments:

March through November for nesting seabirds. All year as haul out site for harbor seals and California sea lions and for high concentrations of seabirds.

Concerns and Advice to Responders:

Anacapa Island is located 11 miles from the mainland and is home to large numbers of seals and sea lions as well as colonies of seabirds. The three islets (west, middle, and east) that make up Anacapa Island are oriented in an east-west direction and a boat is required to travel from one islet to another. Trustee agencies may not sanction onshore response activities. Refer to and comply with introductory section of 9814 before initiating any response activities.

Hazard and Restrictions:

Conditions in the Santa Barbara Channel and around the islands are variable and the ocean is unforgiving. Only experienced skippers with vessels capable of withstanding severe weather are advised to make the cross-channel passage. Major shipping lanes lie between the islands and the mainland.

Site Strategies:

Strategy: 4-880.1 Objective: No Onsite Options: Consider Offshore Containment/Recovery/ART

Strategy: There are no practicable onshore response strategies for protecting onshore and nearshore resources in this area. Attempt to collect and/or disperse oil in offshore locations before it reaches inshore areas or the shoreline. Before initiating any response activities within the Channel Islands National Marine Sanctuary or Channel Islands National Park, refer to and comply with the Channel Islands Introductory section of 9814.

Table of Response Resources

Last Page Update

Logistics:

Directions: Only by boat. Closest harbors are Santa Barbara and Ventura. All access to the Channel Islands must be coordinated with National Parks and must follow biosecurity protocols. Refer to introductory section of 9814 for more information. The three islets (west, middle, and east) that make up Anacapa Island are oriented in an east-west direction, making it very long and narrow.

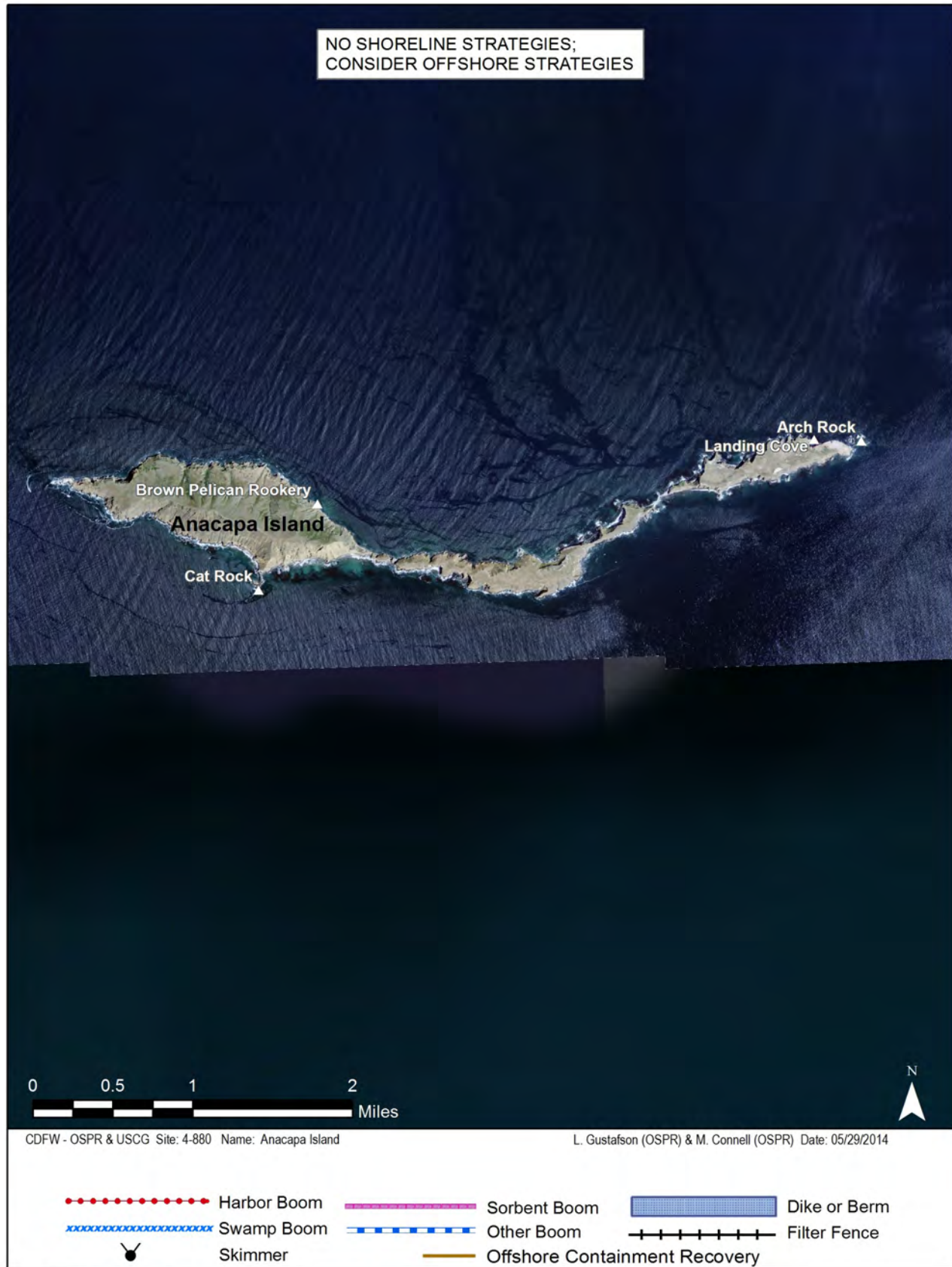
Land Access: No road or vehicle access.

On-Water Limitations: Vessel landing available at Landing Cove (north face of island on the east end). Caution-monitor sea conditions and depth before attempting approach.

Facilities, Staging Areas, Command Posts, Available Equipment:

Communications Problems: Cell phone reception unreliable. Marine VHF or satellite phone best options.

Additional Operational Comments: Each island is equipped with at least 1 base station radio for communication with park headquarters and a marine band radio.



Imagery: NAIP 2012 (Summer) 4-Band

9814.3 Economic Sensitive Sites

Refer to Section 9805 for more information.

The Channel Islands region is home to many environmentally, biologically, and culturally significant sites. The area is used for several recreational and commercial activities including but not limited to scuba diving, hiking, fishing, research, marine resource enhancement, habitat restoration, sailing, boating, and kayaking. Due to this combination of resources and varied resource uses, the Channel Islands region of this Area Contingency Plan shall be considered an important economic site in its entirety with a significance ranking of D. This ranking is in addition to any environmental ranking provided in Section 9814.2.

9814.4 Shoreline Operational Divisions

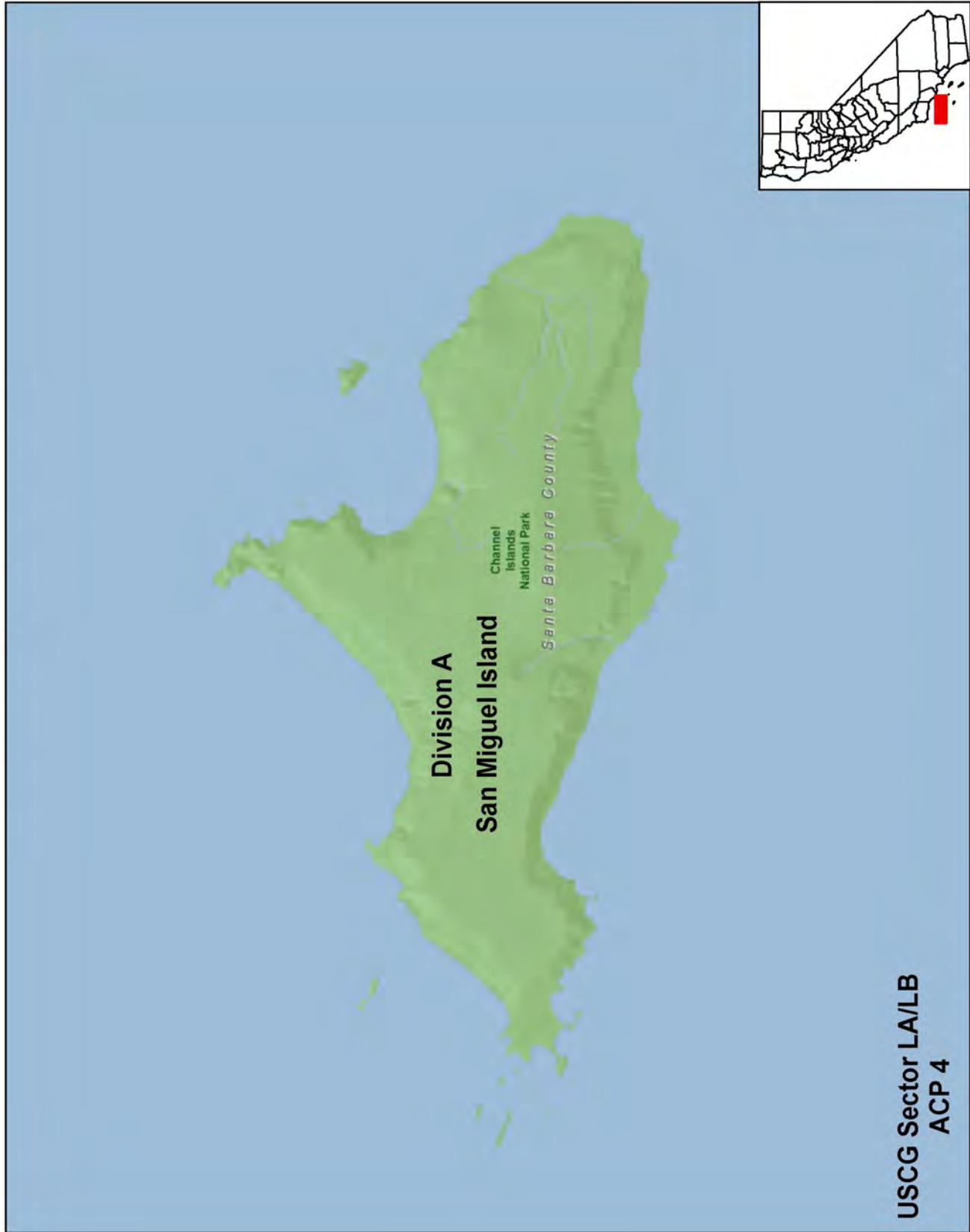
Refer to Section 9806 for more details.

Channel Islands Operational Divisions



Source: Mike Connell, Jennifer Gold, Lora Konde - 2011

Channel Islands Operational Divisions



Source: Mike Connell, Jennifer Gold, Lora Konde - 2011

Channel Islands Operational Divisions



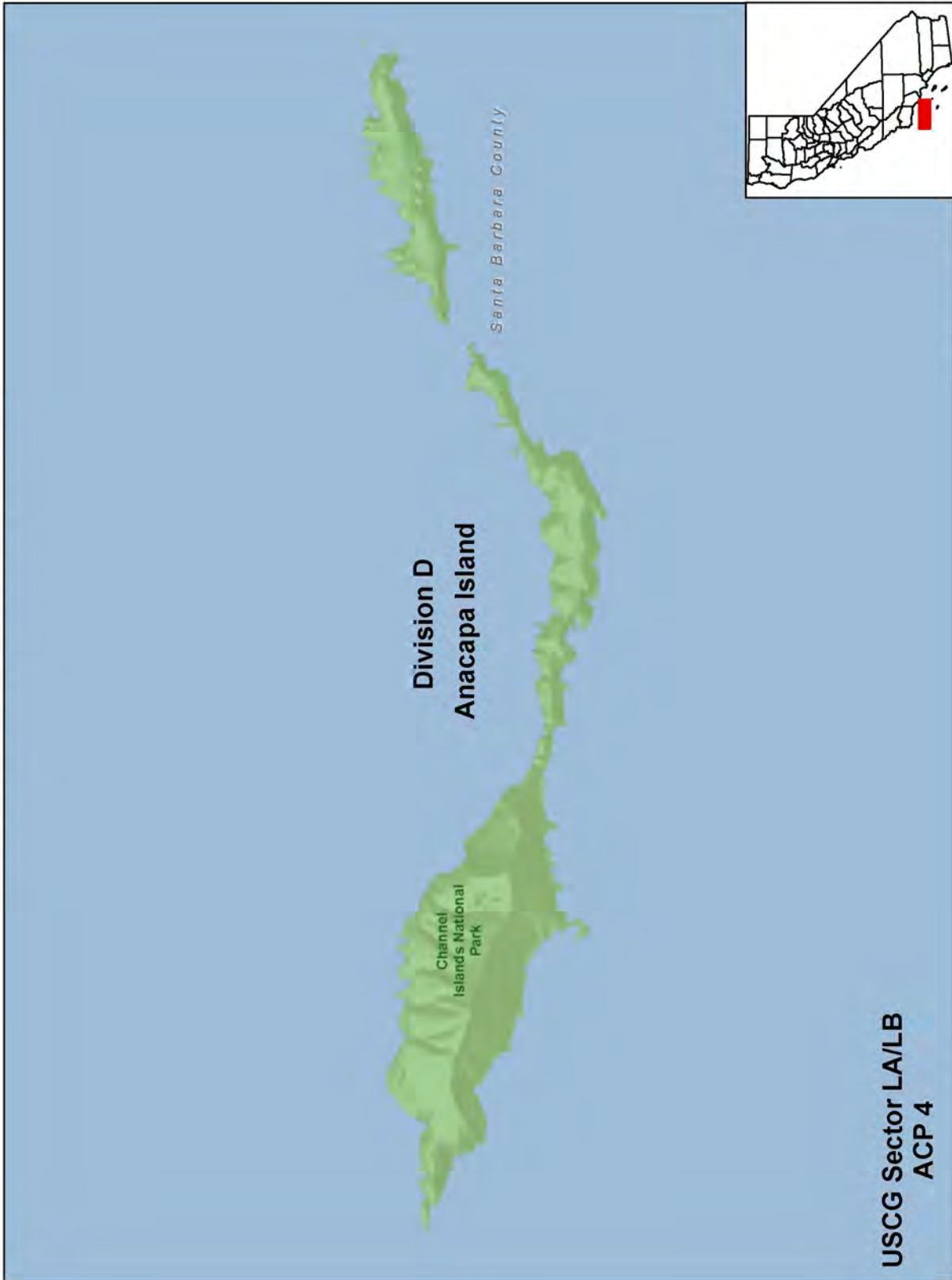
Source: Mike Connell, Jennifer Gold, Lora Konde - 2011

Channel Islands Operational Divisions



Source: Mike Connell, Jennifer Gold, Lora Konde - 2011

Channel Islands Operational Divisions



Source: Mike Connell, Jennifer Gold, Lora Konde - 2011