

## Section 9817- Orange County

9817 Orange County (GRA 3).....	<a href="#">737</a>
9817.1 Response Summary Table.....	<a href="#">738</a>
9817.2 Geographic Response Strategies for Environmental Sensitive Sites.....	<a href="#">741</a>
9817.2.1 GRA 3 Site Index.....	<a href="#">742</a>
9817.3 Economic Sensitive Sites.....	<a href="#">782</a>
9817.4 Shoreline Operational Divisions.....	<a href="#">793</a>

**9817 Orange County (GRA 3)**

Orange County GRA 3 begins at the border between Los Angeles and Orange Counties and extends south approximately 40 miles to the San Diego County line. Most of the shoreline in this GRA is fine grain sandy beach habitat. Western snowy plovers and California least terns use these beaches for wading, foraging, and nesting activities. Information on beach nesting bird concerns can be found in the site 5-000 ACP 5 Sandy Beaches.

Access to GRA 3 is available from State, County, and City beaches along Pacific Coast Highway. The Navy may impose security restrictions in Anaheim Bay (Seal Beach National Wildlife Refuge). Primary boom placement is under the control of the Seal Beach Naval Weapons Station Commanding Officer.

### **9817.1 Response Summary Table**

The Geographic Response Strategies for Environmental Sensitive Sites in GRA 3 consist mainly of utilizing boom to exclude oil entry into wetlands and prevent upstream migration of oil.

A summary of the response resources is listed by site and sub-strategy next.

## Summary of ACP 5 GRA 3 Response Resources by Site and Sub-Strategy

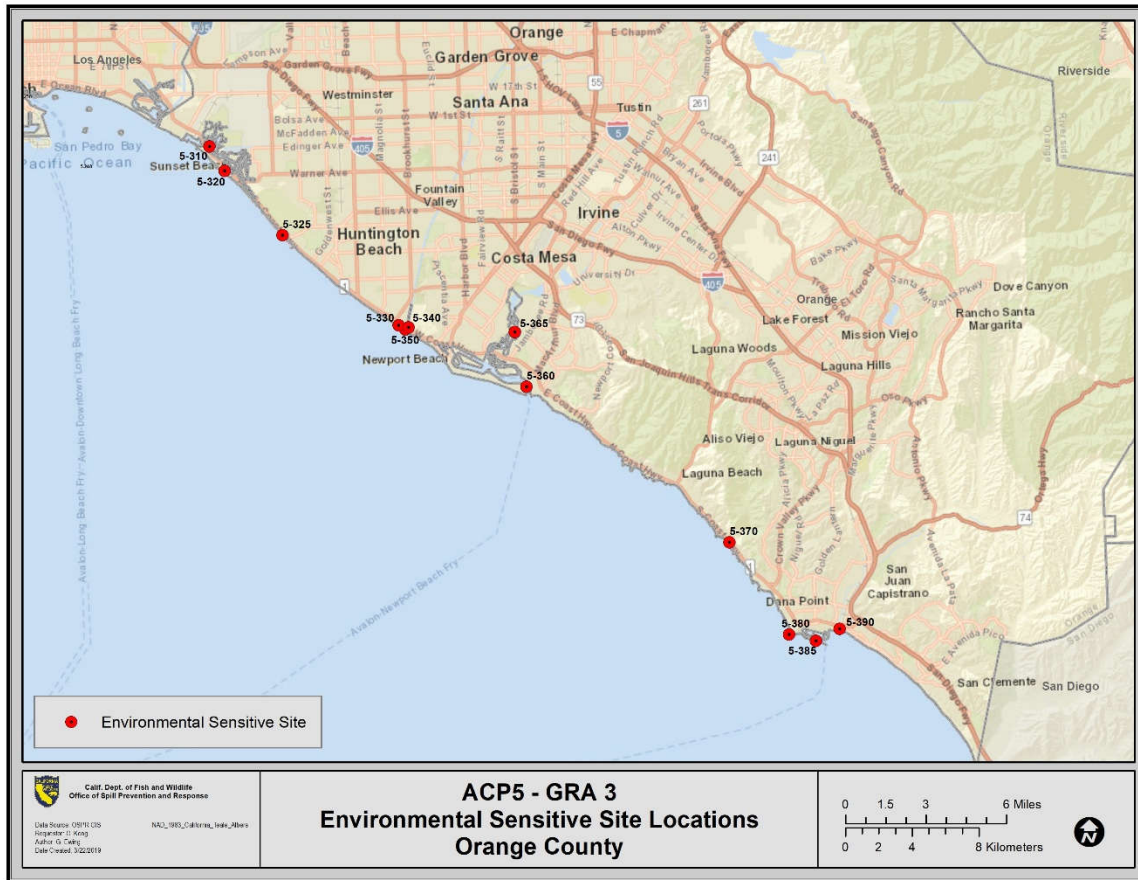
Site	Site Name	PREVENTION OBJECTIVE OR CONDITION FOR DEPLOYMENT		
Sub-Strategy	Equipment	Sub-Type	Size/Unit	QTY/Unit
<b>5-310</b>	<b>Anaheim Bay (Seal Beach National Wildlife Refuge)</b>			
<b>.1 - Exclude Oil</b>				
	Boom	Harbor Boom	18 or 24 inch	1500 feet
	Staff	Staff to Deploy		4
	Vessel	Boom Boat		1
	Anchor	Danforth	40 lbs	4
<b>.2 - Exclude Oil</b>				
	Staff	Staff to Deploy		4
	Vessel	Boom Boat		1
	Anchor	Danforth	40 lbs	5
	Boom	Harbor Boom	18 or 24 inch	2200 feet
<b>.3 - Exclude Oil</b>				
	Staff	Staff to Deploy		4
	Vessel	Boom Boat		1
	Boom	Harbor Boom	18 or 24 inch	750 feet
<b>.4 - Exclude Oil</b>				
	Vessel	Boom Boat		4
	Boom	Ocean Boom	42 inch	1500 feet
	Staff	Staff to Deploy		4
<b>.5 - Exclude Oil</b>				
	Vessel	Boom Boat		2
	Stakes			8
	Staff	Staff to Deploy		4
	Boom	Swamp Boom		1500 feet
	Vessel	Skiff or Punt		2
	Anchor	Danforth	40 lbs	4
<b>5-320</b>	<b>Inner Bolsa Chica</b>			
<b>.1 - Exclude Oil</b>				
	Anchor	Danforth	40 lbs	4
	Boom	Harbor Boom	18 or 24 inch	1500 feet
	Staff	Staff to Deploy		4
	Vessel	Boom Boat		1
<b>.2 - Exclude Oil</b>				
	Boom	Harbor Boom	18 or 24 inch	300 feet
	Staff	Staff to Deploy		4
	Vessel	Boom Boat		1
<b>5-325</b>	<b>Bolsa Chica - Restored Wetlands</b>			
<b>.1 - No Onsite Options: Consider Offshore Containment/Recovery/ART</b>				
<b>.2 - Divert Oil</b>				
	Other Boom		18 inch	2400 feet
	Vessel	Skiff or Punt		1
	Staff	Staff to Deploy		4
	Stakes			2
	Anchor	Danforth	40 lbs	4
<b>.3 - Divert Oil</b>				
	Vessel	Skiff or Punt		1
	Staff	Staff to Deploy		4
	Other Boom		18 inch	1700 feet
	Anchor	Danforth	40 lbs	3
	Stakes			2

**Site      Site Name**

**Sub-Strategy      PREVENTION OBJECTIVE OR CONDITION FOR DEPLOYMENT**

Equipment	Sub-Type	Size/Unit	QTY/Unit
<b>5-330      Talbert Marsh</b>			
<b>.1 - Exclude Oil</b>			
Staff			2
Bulldozer			1
<b>.2 - Exclude Oil</b>			
Staff	Staff to Deploy		4
Stakes			2
Vessel	Skiff or Punt		1
Boom	Harbor Boom	18 or 24 inch	600 feet
<b>5-340      Newport Slough Wetland</b>			
<b>.1 - Exclude Oil</b>			
Staff	Staff to Deploy		2
<b>5-350      Santa Ana River</b>			
<b>.1 - Exclude Oil</b>			
Bulldozer			1
Staff	Staff to Deploy		2
<b>.2 - Exclude Oil</b>			
Anchor	Danforth	40 lbs	1
Vessel	Skiff or Punt		1
Stakes			2
Staff	Staff to Deploy		4
Boom	Harbor Boom	18 or 24 feet	600 feet
<b>5-360      Lower Newport Bay</b>			
<b>.1 - Exclude Oil</b>			
Boom	Harbor Boom	18 or 24 inch	1600 feet
Vessel	Boom Boat		1
Staff	Staff to Deploy		4
<b>5-365      Upper Newport Bay</b>			
<b>.1 - Exclude Oil</b>			
Boom	Harbor Boom	18 or 24 inch	1000 feet
Vessel	Boom Boat		1
Staff	Staff to Deploy		4
<b>5-370      Aliso Creek</b>			
<b>.1 - Exclude Oil</b>			
Skiploader			
Boom	Harbor Boom	18 or 24 inch	200 feet
Staff	Staff to Deploy		2
Vessel	Skiff or Punt		1
<b>5-380      Dana Point</b>			
<b>.1 - No Onsite Options: Consider Offshore Containment/Recovery/ART</b>			
<b>5-385      Dana Point Breakwater</b>			
<b>.1 - No Onsite Options: Consider Offshore Containment/Recovery/ART</b>			
<b>5-390      San Juan Creek</b>			
<b>.1 - Exclude Oil</b>			
Staff	Staff to Deploy		2
Bulldozer			1
<b>.2 - Exclude Oil</b>			
Stakes			
	Fencing		1000 feet
Staff	Staff to Deploy		10
Staff	Staff to Tend		2

# 9817.2 Geographic Response Strategies for Environmental Sensitive Sites



Index Map – GRA 3, Orange County Environmental Sensitive Sites

### 9817.2.1 GRA 3 Site Index

<b>Site #</b>	<b>Site Name</b>	<b>Page #</b>
5-000-A	ACP 5 Sandy Beaches	<a href="#">743</a>
5-310-A	Anaheim Bay (Seal Beach National Wildlife Refuge)	<a href="#">745</a>
5-320-A	Bolsa Chica	<a href="#">748</a>
5-325-A	Bolsa Chica - Restored Wetlands	<a href="#">752</a>
5-330-A	Talbert Marsh	<a href="#">756</a>
5-340-A	Newport Slough Wetland	<a href="#">759</a>
5-350-A	Santa Ana River	<a href="#">762</a>
5-360-A	Lower Newport Bay	<a href="#">765</a>
5-365-A	Upper Newport Bay	<a href="#">768</a>
5-370-A	Aliso Creek	<a href="#">771</a>
5-380-B	Dana Point	<a href="#">774</a>
5-385-A/C	Dana Point Breakwater	<a href="#">777</a>
5-390-A	San Juan Creek	<a href="#">779</a>

**County:** Orange**ACP Division/Segment:****NOAA Chart :** 18740**Map Book :****Decimal Degrees :****Site Description:**

Western snowy plover and California least tern nesting sites are seasonally occupied at various coastal beach sites. Western snowy plovers also maintain a year round presence with nesting from March to September. Beach nesting birds may have active nests, or chicks may be actively moving about the described area. All responders should be careful to minimize disturbance and to avoid causing injury to nests and chicks. Response activities must be planned and monitored to prevent injury to both birds and habitat.

**Resources at Risk:**

*ESI and Habitat:* 3A Fine- to medium-grained sand beaches

**List of Resources at Risk:**

	Resource Name	Status	Presence
Birds	California least tern	FE, SE	Apr-Sep
Birds	Western snowy plover	FT	Year-round

FT-Federally Threatened, FE-Federally Endangered, FP-Federally Protected, SE-State Endangered, ST-State Threatened, SP -State Protected, SR-State Rare, SSC-Species of Special Concern, BG EPA-Bald and Golden Eagle Protection Act, SSSP-State Special Status Species

**List of Key Contacts:**

Type	Name/Title	Organization	Phone
C	/	Office of Historic Preservation	(916) 445-7000
C	/	South Central Coastal Information Center	(657) 278-5395
O	/	Los Angeles County Fire Department	(323) 881-2455
O	/	Los Angeles County Lifeguard, Big Rock to Ball	(310) 394-3261
O	/	Los Angeles County Lifeguard, Redondo Beach	(310) 372-2162
O	/	Los Angeles County Lifeguard, Zuma/Malibu	(310) 457-2525
T	Hans Sin/California least tern Coordinator	California Department of Fish and Wildlife	(858) 539-9022
T	/Angeles District Office	California State Parks	(818) 880-0363
T	/Orange Coast District	California State Parks	(949) 492-0802
T	/Office	California State Parks, Malibu Sector	(310) 457-8143
T	Joe Dillon/	NOAA National Marine Fisheries Service	(707) 575-6093
T	/Spill Coordinator (24hr)	US Fish and Wildlife Service	(760) 607-9768

C – Cultural, Historic, Archaeological; E – Entry/Owner/Access; O – Other; S – Safety; T – Trustee; X – Exclusion or Security

**Additional Site Summary Comments:**

Western snowy plovers are small, sparrow-sized white and tan colored shorebirds. California least terns are small, gull-like, gray, white and black colored diving birds. Western snowy plovers conceal their nests in the upper rack line above the high tide line while California least terns generally nest on open beaches and/or along estuary shorelines. Nests are usually constructed on loose sand, and are easily stepped on due to their very cryptic nature. Chicks are known to run between nests and the waterline. Western snowy plover adults forage while wading along the shoreline. California least tern adults dive into the water to forage in shallow, nearshore areas of the open coast, embayments, estuaries, and dune lakes.



**Concerns and Advice to Responders:**

Western snowy plover and California least tern bird-nesting sites are typically shallow depressions scratched out from the sand surface on sandy beaches above the highest tide line. The nest sites are typically very well disguised and difficult to see. Nest sites may contain either eggs, or chicks which are potentially vulnerable to trampling by vehicles or foot traffic. Western snowy plover adults and chicks, and California least tern chicks are known to move between the nest sites and the active water line. Over-wintering Western snowy plover adults may be foraging throughout the response area. To aid in avoiding damage to nests, consider delineation of nesting areas and designating responder “pathways” in discussion with Trustee Agencies and/or the local land manager and their biological monitors. Monitors should be present to observe and prevent any disturbance to birds/nests caused by operations. Vehicle travel on beach should be restricted to wet sand if possible; and should be slow enough to avoid and minimize impacts to wildlife (not to exceed 15 MPH).

**Hazard and Restrictions:**

Watch weather and sea conditions. Strong surf.

**Site Strategies:**

**Strategy: 5-000.1 Objective:** Shoreline Pre-Clean: Resource Specialist Supervision Required

*Strategy:* After approval only, pre-clean beach with hand crews to move and store kelp, driftwood, and vegetative debris above high-tide line. Collect and properly dispose of trash. Redistribute wrack after response efforts are completed. The areas to be protected should be monitored by an assigned biological monitor. Heavy equipment and 4WD vehicles may be used pending approval.

Table of Response Resources

Equipment	Sub-Type	Size	Unit	QTY	Unit	Last Page Update
Staff	Natural Resource Specialist					

**Strategy: 5-000.2 Objective:** Other: See Strategy Box

*Strategy:* In consultation with USFWS and CDFW, Western snowy plover or California least tern eggs may be removed from nests by authorized and qualified personnel and taken to an approved facility to reduce injury.

Table of Response Resources

Equipment	Sub-Type	Size	Unit	QTY	Unit	Last Page Update
Staff	Natural Resource Specialist					

**Logistics:**

*Directions:* Most access from Pacific Coast Highway (PCH or Highway 1).

*Land Access:* Refer to coastal access mapping information to describe the best access point for response and natural resource protection. Access by crews and equipment should occur only through areas specifically designated by authorized monitoring personnel. Access points shall be minimized by size and number to reduce impacts. Site specific information will be developed during a response effort.

*On-Water Limitations:*

*Facilities, Staging Areas, Command Posts, Available Equipment:* All facilities should be selected to minimize disturbances and impacts to wildlife. All responders will be briefed on procedures for avoiding birds and nest sites.

*Communications Problems:* None.

*Additional Operational Comments:* Beaches may be pre-cleaned if given prior authorization. Some beaches have designated fenced areas for nesting. Individual Environmentally Sensitive Sites may have additional Western snowy plover and California least tern information.

County: Orange

ACP Division/Segment: OR - A - S002

NOAA Chart: 18749

Map Book: 826 G5

Decimal Degrees: 33.7313 -118.0811

**Site Description:**

One of the most extensive and valuable wetlands in Orange County. Coastal lagoon, with extensive wetlands and marsh. Opening of bay has been channelized and lined with riprap, but inside bay past the Hwy1/Pacific Coast Highway bridge are extensive wetlands.

**Resources at Risk:**

ESI and Habitat: 10A Salt - and brackish-water marshes

9A Sheltered tidal flats

6B Riprap

**List of Resources at Risk:**

	Resource Name	Status	Presence	Sensitivity
Birds	California least tern	FE, SE	Apr-Sep	
Birds	Western snowy plover	FT, SSC	Year-round	
Birds	California brown pelican	FP, SP	Jun-Oct	
Birds	California Ridgeway's rail	FE, SE	Year-round	
Birds	peregrine falcon	FP, SP	Sep-Apr	
Birds	Belding's savannah sparrow	SE	Year-round	
Birds	black skimmer	FP, SSC	Apr-Oct	
Birds	waterfowl		Sep-May	
Birds	shorebirds		Year-round	
Birds	seabirds		Year-round	
Fish	juvenile fish		Year-round	
Plants	salt marsh bird's beak	FE, SE	Year-round	
Plants	eelgrass		Year-round	
Reptiles	green sea turtle	FT	Year-round	

FT-Federally Threatened, FE-Federally Endangered, FP-Federally Protected, SE-State Endangered, ST-State Threatened, SP -State Protected, SR-State Rare, SSC-Species of Special Concern, BGEPA-Bald and Golden Eagle Protection Act, SSSP-State Special Status Species

**List of Key Contacts:**

Type	Name/Title	Organization	Phone
C	/	Office of Historic Preservation	(916) 445-7000
C	/	South Central Coastal Information Center	(657) 278-5395
T	Hans Sin/California least tern Coordinator	California Department of Fish and Wildlife	(858) 539-9022
T	/	Seal Beach National Wildlife Refuge	(562) 598-1024
T	/Spill Coordinator (24hr)	US Fish and Wildlife Service	(760) 607-9768
T	/7am-4pm	US Navy Environmental Office	(562) 626-7776
T	/after hours	US Navy Naval Weapons Station Seal Beach	(562) 626-7229

C – Cultural, Historic, Archaeological; E – Entry/Owner/Access; O – Other; S – Safety; T – Trustee; X – Exclusion or Security

**Additional Site Summary Comments:**

**Concerns and Advice to Responders:**

To protect endangered and sensitive species and wetland habitat. Responders should watch for and avoid nesting birds and minimize disturbances to vegetation. Avoid the spread of oil into the wetland through response activities.

**Hazard and Restrictions:**

The Navy may impose security restrictions in the event of a spill. This could effectively close off a portion of Anaheim Bay and deployment of the preferred strategies. Strategy 5-310.1 could be delayed until the Navy reopens this area to responders. If the Navy closes this area, alternative strategies 5-310.2 and 5-310.3 will have to be deployed. Watch weather and sea conditions.

**Site Strategies:****Site Validation Level: III****Strategy: 5-310.1 Objective:** Exclude Oil

*Strategy:* Use deflection boom to deflect oil.

Table of Response Resources

Equipment	Sub-Type	Size	Unit	QTY	Unit	Last Page Update
Boom	Harbor Boom	18 or 24 inch		1700	feet	<i>Strategy Updated:</i> 4/28/2023
Anchor	Danforth	40 lbs		4		<i>Last Test:</i> 8/25/2022
Vessel	Boom Boat			1		
Vessel	Skiff			1		
Staff	Staff to Deploy			6		

**Strategy: 5-310.2 Objective:** Exclude Oil

*Strategy:* Use this strategy if the origin of the spill is offshore. Towed boom array using OSRO vessels and vessels of opportunity (each boom 600' to 800') as necessary.

Table of Response Resources

Equipment	Sub-Type	Size	Unit	QTY	Unit	Last Page Update
Boom	Ocean Boom	42 inch		1500	feet	
Vessel	Boom Boat			4		
Staff	Staff to Deploy			4		

**Strategy: 5-310.3 Objective:** Exclude Oil

*Strategy:* Use this strategy if the origin of the spill is from the secure area. Use a single stretch of 18" boom to line the inlets to Anaheim Bay. This strategy can also connect to 5-320.1.

Table of Response Resources

Equipment	Sub-Type	Size	Unit	QTY	Unit	Last Page Update
Boom	Harbor Boom	18 inch		1500	feet	<i>Strategy Updated:</i> 9/26/2014
Anchor	Danforth	40 lbs		4		<i>Last Test:</i> 2/15/2013
Vessel	Boom Boat			2		
Vessel	Skiff or Punt			2		
Stakes				8		
Staff	Staff to Deploy			4		

**Logistics:**

*Directions:* Boat launches available in Huntington Harbour. From Bolsa Chica St. in Huntington Beach, go west on Edinger Ave. until it ends at Sunset Aquatic Marina. Additional launching at PCH and Warner Ave. (next to Huntington Beach Fire Station No. 7).

*Land Access:* Land access on the Seal Beach Naval Weapons Station (SBNWS).

*On-Water Limitations:* Shallow water and strong currents. Heavy small boat traffic. All services available.

*Facilities, Staging Areas, Command Posts, Available Equipment:* Both boat launch locations have adequate space for parking and staging.

*Communications Problems:* None

*Additional Operational Comments:* Primary boom placement is under the control of the SBNWS Commanding Officer.



**County:** Orange**ACP Division/Segment:** OR - A - S002**NOAA Chart:** 18746**Map Book:** 857 B1**Decimal Degrees:** 33.7084 -118.0572**Site Description:**

Coastal lagoon and wetlands complex (an extension of Anaheim Bay). Extensive oil field production at the southern portion of the wetland. Currently no direct connection to the ocean.

**Resources at Risk:***ESI and Habitat:* 10A Salt - and brackish-water marshes

10B Freshwater marshes

**List of Resources at Risk:**

	Resource Name	Status	Presence	Sensitivity
Birds	Belding's savannah sparrow	SE	Year-round	
Birds	California least tern	FE, SE	Apr-Sep	
Birds	Western snowy plover	FT, SSC	Year-round	
Birds	California brown pelican	FP, SP	Jun-Oct	
Birds	peregrine falcon	FP, SP	Sep-Apr	
Birds	black skimmer	FP, SSC	Apr-Oct	
Birds	seabirds		Year-round	
Birds	shorebirds		Year-round	
Birds	waterfowl		Sep-May	
Fish	juvenile fish		Year-round	
Mammals	salt-marsh harvest mouse	FE, SE	Year-round	
Reptiles	green sea turtle	FT	Year-round	

FT-Federally Threatened, FE-Federally Endangered, FP-Federally Protected, SE-State Endangered, ST-State Threatened, SP -State Protected, SR-State Rare, SSC-Species of Special Concern, BGEPA-Bald and Golden Eagle Protection Act, SSSP-State Special Status Species

**List of Key Contacts:**

Type	Name/Title	Organization	Phone
C	/	Office of Historic Preservation	(916) 445-7000
C	/	South Central Coastal Information Center	(657) 278-5395
O	/	Bolsa Chica Conservancy	(714) 846-1114
O	/	Huntington Beach Lifeguards	(714) 536-2581
T	Hans Sin/California least tern Coordinator	California Department of Fish and Wildlife	(858) 539-9022
T	Melissa Borde/DFW Reserve Manager, BCER	California Department of Fish and Wildlife, Reg 5	(714) 421-8496
T	/	Seal Beach National Wildlife Refuge	(562) 598-1024
T	/Spill Coordinator (24hr)	US Fish and Wildlife Service	(760) 607-9768
T	/7am-4pm	US Navy Environmental Office	(562) 626-7776
T	/after hours	US Navy Naval Weapons Station Seal Beach	(562) 626-7229

C – Cultural, Historic, Archaeological; E – Entry/Owner/Access; O – Other; S – Safety; T – Trustee; X – Exclusion or Security

**Additional Site Summary Comments:**

**Concerns and Advice to Responders:**

To protect endangered and sensitive species and wetland habitat. Responders should watch for and avoid nesting birds and minimize disturbances to vegetation. Avoid the spread of oil into the wetland through response activities.

**Hazard and Restrictions:****Site Strategies:****Strategy: 5-320.1 Objective:** Exclude Oil

*Strategy:* Deflection booms in Huntington Harbour. Collection using skimmers and vacuum trucks. This strategy can connect to 5-310.5.

Table of Response Resources

Equipment	Sub-Type	Size	Unit	QTY	Unit	Last Page Update
Boom	Harbor Boom	18 or 24 inch		1500	feet	<i>Strategy Updated:</i> 9/26/2014
Anchor	Danforth	40 lbs		4		<i>Last Test:</i> 2/15/2013
Vessel	Boom Boat			1		
Staff	Staff to Deploy			4		

**Strategy: 5-320.2 Objective:** Exclude Oil

*Strategy:* Exclusion boom(s) at Warner Ave. bridge.

Table of Response Resources

Equipment	Sub-Type	Size	Unit	QTY	Unit	Last Page Update
Boom	Harbor Boom	18 or 24 inch		300	feet	
Vessel	Boom Boat			1		
Staff	Staff to Deploy			4		

**Logistics:**

*Directions:* Boat launches available in Huntington Harbour. From Bolsa Chica St. in Huntington Beach, go west on Edinger Ave. until it ends at Sunset Aquatic Marina. Additional launching at PCH and Warner Ave. (next to Huntington Beach Fire Station No. 7).

*Land Access:* Parking lot for Bolsa Chica Ecological Reserve at PCH and Warner Ave.

*On-Water Limitations:* Shallow water and strong currents. All services available.

*Facilities, Staging Areas, Command Posts, Available Equipment:* Both boat launching locations have adequate space for parking and staging. Additional parking and staging at the Bolsa Chica Ecological Reserve Interpretive Center at 3842 Warner Ave.

*Communications Problems:* None.

*Additional Operational Comments:* If the origin of the spill is offshore, strategies for site 5-310 will have to be deployed also.





**County:** Orange**ACP Division/Segment:** OR - A - S006 OR - A - S007**NOAA Chart:** 18746**Map Book:** 857 E5**Decimal Degrees:** 33.68344 -118.03593**Site Description:**

Restored (2006) coastal lagoon and wetlands complex. Completely surrounded by a levee with road. Extensive oil field production at the eastern portion of the wetland. There is no connection by water to the Inner Bolsa Chica (5-320A) sensitive site. Site is within the following State Marine Protected Area(s): Bolsa Chica Basin SMCA.

**Resources at Risk:***ESI and Habitat:* 6B Riprap

10B Freshwater marshes

10A Salt - and brackish-water marshes

**List of Resources at Risk:**

	Resource Name	Status	Presence	Sensitivity
Birds	California least tern	FE, SE	Apr-Sep	
Birds	Western snowy plover	FT, SSC	Year-round	
Birds	California brown pelican	FP, SP	Jun-Oct	
Birds	Belding's savannah sparrow	SE	Year-round	
Birds	seabirds		Year-round	
Birds	shorebirds		Year-round	
Birds	waterfowl		Sep-May	
Birds	osprey	FP	Year Round	
Plants	cordgrass		Year-round	
Plants	eelgrass		Year-round	
Plants	pickleweed		Year-round	

FT-Federally Threatened, FE-Federally Endangered, FP-Federally Protected, SE-State Endangered, ST-State Threatened, SP -State Protected, SR-State Rare, SSC-Species of Special Concern, BGEPA-Bald and Golden Eagle Protection Act, SSSP-State Special Status Species

**List of Key Contacts:**

Type	Name/Title	Organization	Phone
C	/	Office of Historic Preservation	(916) 445-7000
C	/	South Central Coastal Information Center	(657) 278-5395
E	/Emergency Contact (24hr)	California Resources Corporation	(562) 624-3452
T	Hans Sin/California least tern Coordinator	California Department of Fish and Wildlife	(858) 539-9022
T	Becky Ota/MHCP Manager	California Department of Fish and Wildlife, MPAs	(650) 743-7934
T	Melissa Borde/DFW Reserve Manager, BCER	California Department of Fish and Wildlife, Reg 5	(714) 421-8496
T	/Orange Coast District	California State Parks	(949) 492-0802
T	/Oil Spill Point of Contact	NOAA National Marine Fisheries Service	(707) 480-3496
T	/Spill Coordinator (24hr)	US Fish and Wildlife Service	(760) 607-9768

C – Cultural, Historic, Archaeological; E – Entry/Owner/Access; O – Other; S – Safety; T – Trustee; X – Exclusion or Security

**Additional Site Summary Comments:**

Western Levee Rd will have limited access during nesting season (April-Sept) and will require biological consultation before access during this period. 40-60 Species of finfish are expected to utilize the basin.

**Concerns and Advice to Responders:**

To protect endangered and sensitive species and wetland habitat. Responders should watch for and avoid nesting birds and minimize disturbances to vegetation and mudflats. Avoid the spread of oil into the wetland through response activities.

**Hazard and Restrictions:**

Watch weather and sea conditions such as high energy wave action at the wetland entrance. Watch for shallow sandbars at the wetland entrance, entry channel to the east of the inner bridge, and in the basin near the launch ramp. Tidal currents can be strong and dangerous in the entry channel and throughout the wetland. Loose riprap may be a hazard for shoreline activities.

**Site Strategies:****Site Validation Level: III**

**Strategy: 5-325.1 Objective:** No Onsite Options: Consider Offshore Containment/Recovery/ART  
**Strategy:** a) Recommended primary response strategy is on-water containment and recovery before oil reaches inlet. b) Pursue feasibility of alternative response technologies (e.g. dispersants and in-situ burning) before oil reaches the inlet.

Table of Response Resources

**Last Page Update***Strategy Updated:**Last Test:***Strategy: 5-325.2 Objective:** Divert Oil

**Strategy:** \*\*\*This strategy should only be used when there is enough water to safely deploy. It should be deployed only at higher tides and when there are no sandbars.\*\*\* Use deflection boom as per diagram to deflect oil to collection area at northeast corner of boom.

Table of Response Resources

Equipment	Sub-Type	Size	Unit	QTY	Unit	Last Page Update
Other Boom		18 inch		2400	feet	<i>Strategy Updated:</i>
Anchor	Danforth	40 lbs		4		<i>Last Test: 2/26/2021</i>
Vessel	Skiff or Punt			1		
Stakes				2		
Staff	Staff to Deploy			4		
Vessel	Work Boat			1		

**Strategy: 5-325.3 Objective:** Divert Oil

**Strategy:** Use deflection boom as per diagram to deflect oil to collection area at northeast corner of boom.

Table of Response Resources

Equipment	Sub-Type	Size	Unit	QTY	Unit	Last Page Update
Other Boom		18 inch		1700	feet	<i>Strategy Updated:9/26/2014</i>
Anchor	Danforth	40 lbs		3		<i>Last Test: 2/26/2021</i>
Vessel	Skiff or Punt			1		
Stakes				2		
Staff	Staff to Deploy			4		
Vessel	Work Boat			1		

**Logistics:**

**Directions:** From Pacific Coast Highway in Huntington Beach, access through Bolsa Chica State Beach or access through California Resources Corporation (CRC) one block east of Pacific Coast Highway off Seapoint Dr.

**Land Access:** Parking lot at Bolsa Chica State Beach for oceanside of inlet. Contact CRC for access through tidal basin side of the inlet.

**On-Water Limitations:** Shallow water and strong currents. Boat launch is available on the north side of the oil service bridge. There are no docks. Fuel is available at nearby service stations north and south on Pacific Coast Highway.

*Facilities, Staging Areas, Command Posts, Available Equipment:* Pre-staged booms stored in containers on the north side of the oil service bridge. This boom was originally purchased for spill response during the construction phase and should not be the first choice for the above strategies. It is in metric units and is not easily deployed since it is not on trailers. Contact the DFW Reserve Manager for use of this boom.

*Communications Problems:* No obstructions or limitations to cell phone or radio usage in the area.

*Additional Operational Comments:* As the bottom profile and currents are ever-changing in the new wetland, other options for additional protection could be considered such as berming the mouth with sand and fast water booming techniques.



**County:** Orange**ACP Division/Segment:** OR - B - S003**NOAA Chart:** 18746**Map Book:** 888 D5**Decimal Degrees:** 33.6318 -117.96021**Site Description:**

Coastal lagoon and wetlands complex connected to the ocean by a riprap-lined channel. There is currently no direct connection to the Santa Ana River.

**Resources at Risk:***ESI and Habitat:* 10A Salt - and brackish-water marshes

9A Sheltered tidal flats

6B Riprap

**List of Resources at Risk:**

	<b>Resource Name</b>	<b>Status</b>	<b>Presence</b>	<b>Sensitivity</b>
Birds	California least tern	FE, SE	Apr-Sep	
Birds	California brown pelican	FP, SP	Jun-Oct	
Birds	Belding's savannah sparrow	SE	Year-round	
Birds	shorebirds		Year-round	
Birds	waterfowl		Sep-May	
Birds	Western snowy plover	FT, SSC	Apr - Sep	

FT-Federally Threatened, FE-Federally Endangered, FP-Federally Protected, SE-State Endangered, ST-State Threatened, SP -State Protected, SR-State Rare, SSC-Species of Special Concern, BGEPA-Bald and Golden Eagle Protection Act, SSSP-State Special Status Species

**List of Key Contacts:**

<b>Type</b>	<b>Name/Title</b>	<b>Organization</b>	<b>Phone</b>
C	/	Office of Historic Preservation	(916) 445-7000
C	/	South Central Coastal Information Center	(657) 278-5395
O	/	AES Power	(714) 374-1401
O	/Agency Representative (24hr)	California Coastal Commission	(415) 693-8375
O	/	Huntington Beach Lifeguards	(714) 536-2581
T	Hans Sin/California least tern Coordinator	California Department of Fish and Wildlife	(858) 539-9022
T	/Orange Coast District	California State Parks	(949) 492-0802
T	/Spill Coordinator (24hr)	US Fish and Wildlife Service	(760) 607-9768

C – Cultural, Historic, Archaeological; E – Entry/Owner/Access; O – Other; S – Safety; T – Trustee; X – Exclusion or Security

**Additional Site Summary Comments:**

California least terns use this area during the summer months. Nesting occurs inside and outside fenced area north of the Santa Ana River. Migratory birds use this area during the winter months.

**Concerns and Advice to Responders:**

To protect endangered and sensitive species and wetland habitat responders should watch for and avoid nesting birds and minimize disturbances to vegetation. Avoid the spread of oil into the wetland through response activities.

**Hazard and Restrictions:**

Tidal currents can be strong and dangerous in the entry channel. Strategy 5-330.3 may only be deployed during a 4.5 foot tide or higher.

**Site Strategies:****Site Validation Level: III****Strategy: 5-330.1 Objective:** Exclude Oil

*Strategy:* Sand berm (12' high). Borrow sand from north side of Talbert Marsh channel.

Table of Response Resources

Equipment	Sub-Type	Size	Unit	QTY	Unit	Last Page Update
Bulldozer				1		<i>Strategy Updated:</i>
Staff				2		<i>Last Test:</i>

**Strategy: 5-330.2 Objective:** Exclude Oil

*Strategy:* Deflection boom diagonally across channel.

Table of Response Resources

Equipment	Sub-Type	Size	Unit	QTY	Unit	Last Page Update
Boom	Harbor Boom	18 or 24 inch		600	feet	<i>Strategy Updated:</i>
Vessel	Skiff or Punt			1		<i>Last Test: 8/5/2014</i>
Stakes				2		
Staff	Staff to Deploy			4		

**Strategy: 5-330.3 Objective:** Exclude Oil

*Strategy:* Deflection boom diagonally across wetland.

Table of Response Resources

Equipment	Sub-Type	Size	Unit	QTY	Unit	Last Page Update
Boom	Harbor Boom	18 or 24 inch		1000	feet	
Vessel	Skiff or Punt			1		
Personnel				8		

**Logistics:**

*Directions:* From PCH in Huntington Beach, go south on Magnolia St. for a few yards and you will be at the entrance to Huntington State Beach. Go to the southern end of the parking lot.

*Land Access:* Channel is located between Talbert Marsh and the Pacific Ocean at the southern end of the Huntington State Beach parking lot.

*On-Water Limitations:* Available via channel and along the Orange County Public Works utility road inside the marsh.

*Facilities, Staging Areas, Command Posts, Available Equipment:* Parking and staging available at the southern end of the Huntington State Beach parking lot. Additional parking and staging is available along the Orange County Public Works utility road adjacent to the marsh inside the gate off of Brookhurst St.

*Communications Problems:* None.

*Additional Operational Comments:* Keep all activities to the north side of the Talbert Marsh channel to minimize impacts to the California least tern nesting site. Notify the California Coastal Commission if a sand berm is required.



CDFW - OSPR & USCG Site: 5-330 Name: Talbert Marsh

G. Ewing (OSPR) & B. Stewart (OSPR) Date: 7/9/2021

●●●● Harbor Boom

▒ Dike or Berm

▒ Nesting Site

**5-340-A Site Summary - Newport Slough Wetland****5-340-A****County:** Orange**ACP Division/Segment:** OR - B - S003 OR - B - S004**NOAA Chart:** 18746**Map Book:** 888 E5**Decimal Degrees:** 33.63136 -117.95579**Site Description:**

Coastal lagoon and wetlands complex connected to the Santa Ana River tidal gates.

**Resources at Risk:***ESI and Habitat:* 10B Freshwater marshes

10A Salt - and brackish-water marshes

**List of Resources at Risk:**

	<b>Resource Name</b>	<b>Status</b>	<b>Presence</b>	<b>Sensitivity</b>
Birds	California least tern	FE, SE	Apr-Sep	
Birds	California brown pelican	FP, SP	Jun-Oct	
Birds	Western snowy plover	FT, SSC	Year-round	
Birds	Belding's savannah sparrow	SE	Year-round	
Birds	wading birds		Aug-Apr	
Birds	shorebirds		Year-round	

FT-Federally Threatened, FE-Federally Endangered, FP-Federally Protected, SE-State Endangered, ST-State Threatened, SP -State Protected, SR-State Rare, SSC-Species of Special Concern, BGEPA-Bald and Golden Eagle Protection Act, SSSP-State Special Status Species

**List of Key Contacts:**

<b>Type</b>	<b>Name/Title</b>	<b>Organization</b>	<b>Phone</b>
C	/	Office of Historic Preservation	(916) 445-7000
C	/	South Central Coastal Information Center	(657) 278-5395
E	/24hr	County of Orange Department of Public Works	(714) 955-0200
O	/		(714) 374-1401
O	/7am-6pm	Newport Beach Lifeguards	(949) 644-3177
T	Hans Sin/California least tern Coordinator	California Department of Fish and Wildlife	(858) 539-9022
T	/Spill Coordinator (24hr)	US Fish and Wildlife Service	(760) 607-9768

C – Cultural, Historic, Archaeological; E – Entry/Owner/Access; O – Other; S – Safety; T – Trustee; X – Exclusion or Security

**Additional Site Summary Comments:**

Call County of Orange, Department of Public Works for access to county access road if locked. The 24 hr phone number is listed in the contacts.



**Concerns and Advice to Responders:**

To protect endangered and sensitive species and wetland habitat. Responders should watch for and avoid nesting birds and minimize disturbances to vegetation. Avoid the spread of oil into the wetland through response activities.

**Hazard and Restrictions:**

**Site Strategies:**

**Site Validation Level: III**

**Strategy: 5-340.1 Objective:** Exclude Oil

*Strategy:* Boom (400') to prevent oil entry into culverts.

Table of Response Resources

Equipment	Sub-Type	Size	Unit	QTY	Unit
Staff	Staff to Deploy			4	
Boom	Harbor Boom	18 inch		400	ft
Anchor	Danforth	22 lb		4	
Vessel	Skiff			1	

**Last Page Update**

*Strategy Updated:* 7/1/2022

*Last Test:* 4/1/2022

**Strategy: 5-340.2 Objective:** Exclude Oil

*Strategy:* Boom (300') to prevent oil entry into culverts.

Table of Response Resources

Equipment	Sub-Type	Size	Unit	QTY	Unit
Staff	Staff to Deploy			4	
Boom	Harbor Boom	18 inch		300	ft
Anchor	Danforth	22 lb		4	
Vessel	Skiff			1	

**Last Page Update**

*Strategy Updated:* 7/1/2022

*Last Test:*

**Logistics:**

*Directions:* From northbound PCH in Newport Beach, turn right onto the county access road just before you reach the bridge over the Santa Ana River.

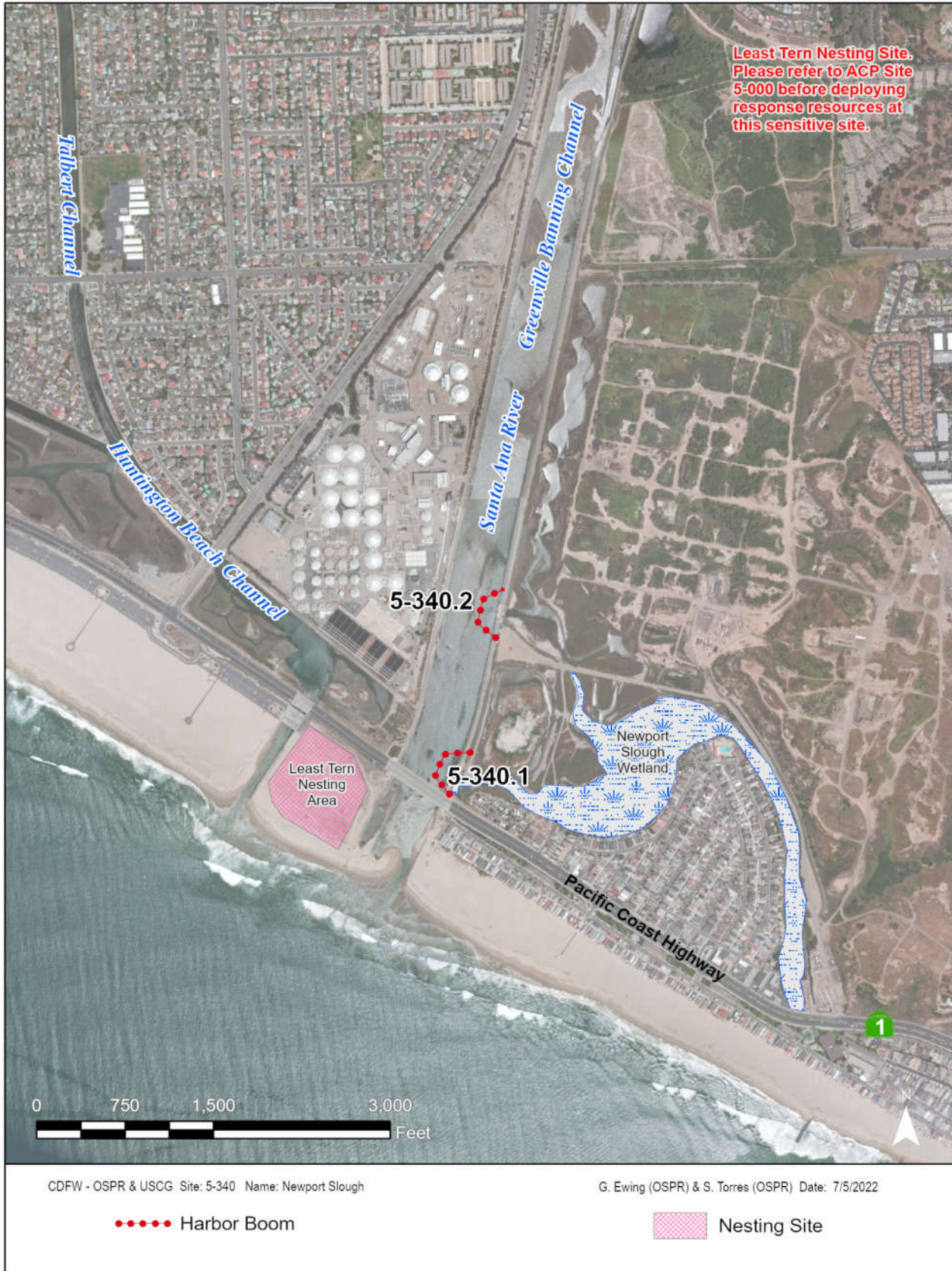
*Land Access:* From parking area at entrance to county access road, proceed on bike path a few yards to gates.

*On-Water Limitations:* There is a small boat ramp on the west side of the Santa Ana River.

*Facilities, Staging Areas, Command Posts, Available Equipment:* There is parking for 2 vehicles at the entrance to the county access road with additional parking along the bike path adjacent to the Santa Ana River.

*Communications Problems:* None.

*Additional Operational Comments:*



*County:* Orange*ACP Division/Segment:* OR - B - S003 OR - B - S004*NOAA Chart:* 18746*Map Book:* 888 E5*Decimal Degrees:* 33.6301 -117.957**Site Description:**

Intermittent river mouth connected to coastal wetlands.

**Resources at Risk:***ESI and Habitat:* 8C Sheltered riprap**List of Resources at Risk:**

	Resource Name	Status	Presence	Sensitivity
Birds	California least tern	FE, SE	Apr-Sep	
Birds	California brown pelican	FP, SP	Jun-Oct	
Birds	Belding's savannah sparrow	SE	Year-round	
Birds	black skimmer	FP, SSC	Apr-Oct	
Birds	seabirds		Year-round	
Birds	waterfowl		Sep-May	
Birds	coastal California gnatcatcher	FT, SSC	Year-round	
Birds	least Bell's vireo	FE, SE	Variable	
Birds	shorebirds		Year-round	
Birds	Western snowy plover	FT, SSC	Year-round	
Birds	burrowing owl	SSC	Year-round	
Fish	juvenile fish		Year-round	

FT-Federally Threatened, FE-Federally Endangered, FP-Federally Protected, SE-State Endangered, ST-State Threatened, SP -State Protected, SR-State Rare, SSC-Species of Special Concern, BGEPA-Bald and Golden Eagle Protection Act, SSSP-State Special Status Species

**List of Key Contacts:**

Type	Name/Title	Organization	Phone
C	/	Office of Historic Preservation	(916) 445-7000
C	/	South Central Coastal Information Center	(657) 278-5395
O	/	AES Power	(714) 374-1401
O	/7am-6pm	Newport Beach Lifeguards	(949) 644-3177
O	/24hr	US Ocean Safety Lifeguards	(949) 276-5050
T	Hans Sin/California least tern Coordinator	California Department of Fish and Wildlife	(858) 539-9022
T	/Orange Coast District	California State Parks	(949) 492-0802
T	/Oil Spill Point of Contact	NOAA National Marine Fisheries Service	(707) 480-3496
T	/Spill Coordinator (24hr)	US Fish and Wildlife Service	(760) 607-9768

C – Cultural, Historic, Archaeological; E – Entry/Owner/Access; O – Other; S – Safety; T – Trustee; X – Exclusion or Security

**Additional Site Summary Comments:**

**Concerns and Advice to Responders:**

To protect endangered and sensitive species nesting and foraging habitat.

**Hazard and Restrictions:****Site Strategies:**

**Strategy: 5-350.1 Objective:** Exclude Oil

*Strategy:* Sand berm (12' high).

Table of Response Resources

Equipment	Sub-Type	Size	Unit	QTY	Unit	Last Page Update
Bulldozer				1		
Staff	Staff to Deploy			2		

**Strategy: 5-350.2 Objective:** Exclude Oil

*Strategy:* Deflection boom diagonally across channel.

Table of Response Resources

Equipment	Sub-Type	Size	Unit	QTY	Unit	Last Page Update
Boom	Harbor Boom	18 or 24 feet		600	feet	
Anchor	Danforth		40 lbs	1		
Vessel	Skiff or Punt			1		
Stakes				2		
Staff	Staff to Deploy			4		

**Logistics:**

*Directions:* From PCH in Huntington Beach, go south on Magnolia St. for a few yards and you will be at the entrance to Huntington State Beach. Go to the southern end of the parking lot.

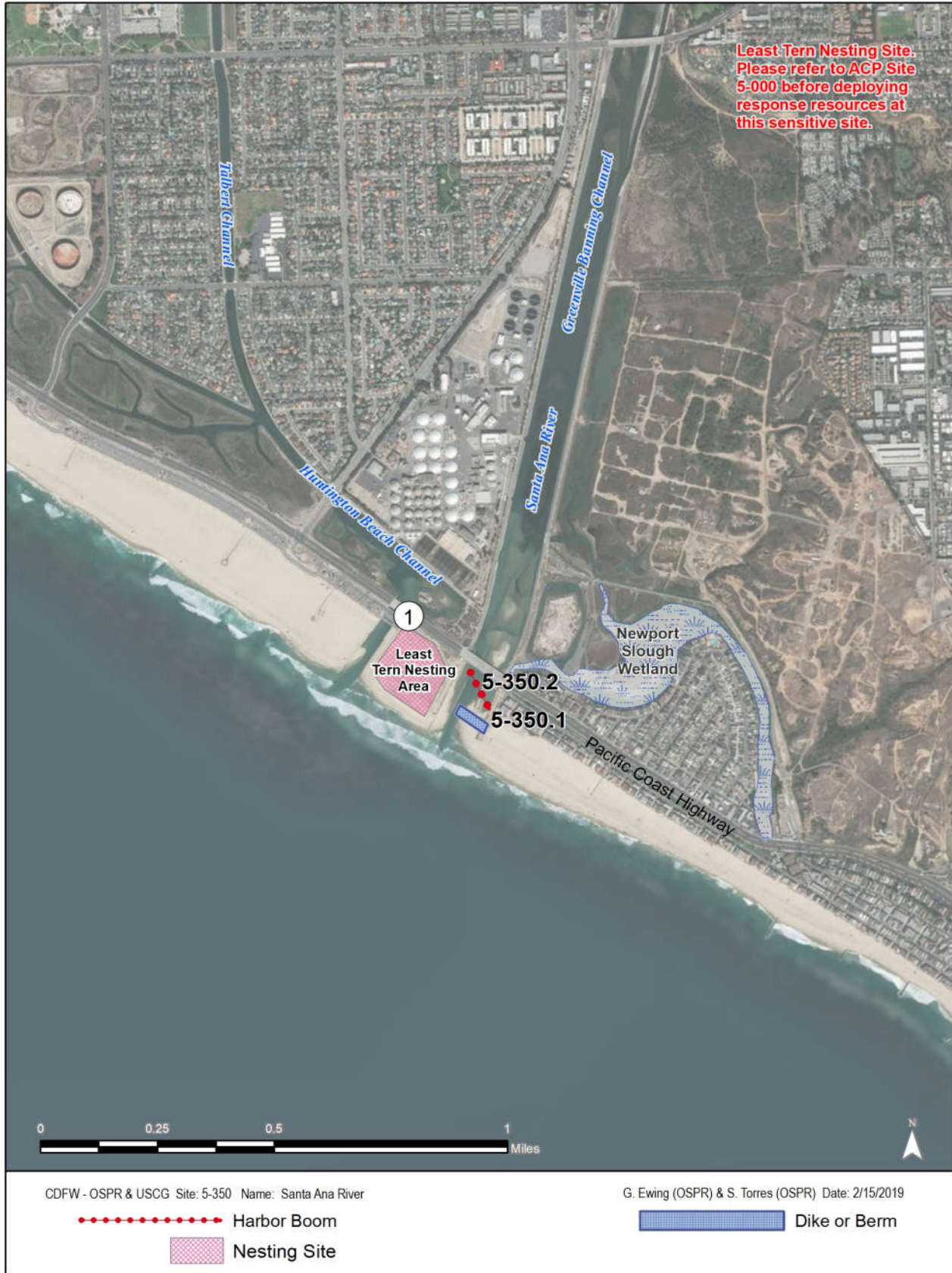
*Land Access:* From parking area, go south to the rivermouth.

*On-Water Limitations:*

*Facilities, Staging Areas, Command Posts, Available Equipment:* Parking and staging at the southern end of the Huntington State Beach parking lot. Access the south bank from Seashore Drive in Newport Beach.

*Communications Problems:* None.

*Additional Operational Comments:* Notify the California Coastal Commission if a sand berm is required.



Least Tern Nesting Site.  
Please refer to ACP Site  
5-000 before deploying  
response resources at  
this sensitive site.

**5-360-A Site Summary - Lower Newport Bay****5-360-A****County :** Orange **ACP Division/Segment :** OR - C - S001**NOAA Chart :** 18754**Map Book :** 919 E2**Decimal Degrees** 33.5949 -117.87973**Site Description:**

Very large coastal embayment - considerable human development with numerous marinas and homes. Shallow water habitat and some shoreline remains undeveloped.

**Resources at Risk:***ESI and Habitat:* 1A Exposed Rocky Shore

8B Sheltered solid man-made structures

10A Salt - and brackish-water marshes

**List of Resources at Risk:**

	<b>Resource Name</b>	<b>Status</b>	<b>Presence</b>
Birds	California least tern	FE, SE	Apr-Sep
Birds	California brown pelican		Jun-Oct
Birds	waterfowl		Sep-May
Birds	shorebirds		Year-round
Birds	seabirds		Year-round
Fish	juvenile fish		Year-round
Plants	eelgrass		Year-round

FT-Federally Threatened, FE-Federally Endangered, FP-Federally Protected, SE-State Endangered, ST-State Threatened, SP -State Protected, SR-State Rare, SSC-Species of Special Concern, BGEPA-Bald and Golden Eagle Protection Act, SSSP-State Special Status Species

**List of Key Contacts:**

<b>Type</b>	<b>Name/Title</b>	<b>Organization</b>	<b>Phone</b>
C	/	Office of Historic Preservation	(916) 445-7000
C	/	South Central Coastal Information Center	(657) 278-5395
O	/7am-6pm	Newport Beach Lifeguards	(949) 644-3177
T	Hans Sin/California least tern Coordinator	California Department of Fish and Wildlife	(858) 539-9022
T	Carla Navarro/Reserve Manager	California Department of Fish and Wildlife, Reg 5	(949) 640-9961

C – Cultural, Historic, Archaeological; E – Entry/Owner/Access; O – Other; S – Safety; T – Trustee; X – Exclusion or Security

**Additional Site Summary Comments:**

**Concerns and Advice to Responders:**

To protect endangered and sensitive species and wetland habitat.

**Hazard and Restrictions:****Site Strategies:**

**Strategy: 5-360.1 Objective:** Exclude Oil

*Strategy:* Use deflection boom at the entrances to deflect the oil to beach fronts. Use additional deflection booms in a cascade pattern in the channel to deflect oil to collection points.

Table of Response Resources

Equipment	Sub-Type	Size	Unit	QTY	Unit	Last Page Update
Boom	Harbor Boom	18 or 24 inch		1600	feet	<i>Strategy Updated: Last Test: 6/6/2013</i>
Vessel	Boom Boat			1		
Staff	Staff to Deploy			4		

**Logistics:**

*Directions:* Boat launch available in Newport Bay. From PCH in Newport Beach, go north on Jamboree Rd. then west on Back Bay Dr. Boat launch is at Newport Dunes Aquatic Park at 1131 Back Bay Dr.

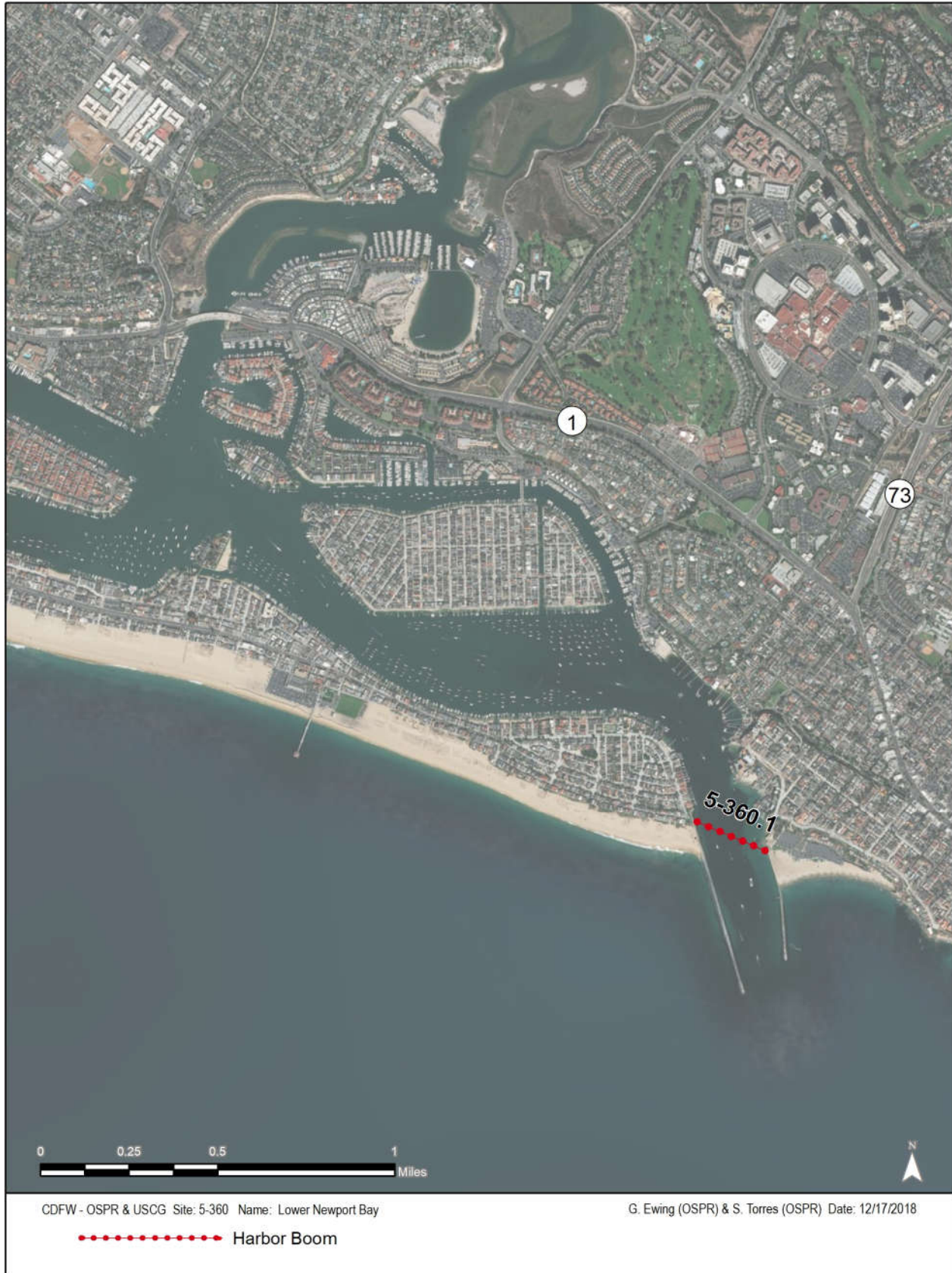
*Land Access:* See Additional Operational Comments.

*On-Water Limitations:* Strong currents. Heavy small boat traffic. All services available.

*Facilities, Staging Areas, Command Posts, Available Equipment:* Currently there is 1200 feet of 24 inch boom staged at the Orange Co. Sheriffs Dept., Newport Beach Harbor Patrol Office.

*Communications Problems:* None.

*Additional Operational Comments:* Land access to the north bank of the Newport Channel is at Balboa Blvd. and Channel Rd. in Newport Beach. Land access to the south bank is at Corona Del Mar State Beach and several points along Bayside Dr. The Newport Beach Harbor Patrol Office is located at 1901 Bayside Dr.





**5-365-A Site Summary - Upper Newport Bay****5-365-A****County :** Orange **ACP Division/Segment :** OR - C - S001**NOAA Chart :** 18754**Map Book :** 889 D5**Decimal Degrees** 33.62393 -117.89169**Site Description:**

Extensive shallow-water habitat - marshland, wetlands, very low energy, soft bottom substrate. Site is within the following State Marine Protected Area(s): Upper Newport Bay SMCA.

**Resources at Risk:**

*ESI and Habitat:* 10A Salt - and brackish-water marshes

**List of Resources at Risk:**

	<b>Resource Name</b>	<b>Status</b>	<b>Presence</b>
Birds	California least tern	FE, SE	Apr-Sep
Birds	California Ridgway's rail	FE, SE	Year-round
Birds	California brown pelican		Jun-Oct
Birds	black skimmer		Apr-Oct
Birds	Belding's savannah sparrow	SE	Year-round
Birds	coastal California gnatcatcher	FT	Year-round
Birds	peregrine falcon		Sep-Apr
Fish	juvenile fish		Year-round
Fish	halibut		Year-round
Plants	salt marsh bird's beak	FE, SE	Year-round
Plants	cordgrass		Year-round

FT-Federally Threatened, FE-Federally Endangered, FP-Federally Protected, SE-State Endangered, ST-State Threatened, SP -State Protected, SR-State Rare, SSC-Species of Special Concern, BGEPA-Bald and Golden Eagle Protection Act, SSSP-State Special Status Species

**List of Key Contacts:**

<b>Type</b>	<b>Name/Title</b>	<b>Organization</b>	<b>Phone</b>
C	/	Office of Historic Preservation	(916) 445-7000
C	/	South Central Coastal Information Center	(657) 278-5395
E	/	Newport Dunes Aquatic Park	(949) 729-3863
O	/7am-6pm	Newport Beach Lifeguards	(949) 644-3177
T	Becky Ota/Marine Conservation Manager	California Department of Fish & Wildlife, MPAs	(650) 631-6789
T	Hans Sin/California least tern Coordinator	California Department of Fish and Wildlife	(858) 539-9022
T	Carla Navarro/Reserve Manager	California Department of Fish and Wildlife, Reg 5	(949) 640-9961
T	/Spill Coordinator (24hr)	US Fish and Wildlife Service	(760) 607-9768

C – Cultural, Historic, Archaeological; E – Entry/Owner/Access; O – Other; S – Safety; T – Trustee; X – Exclusion or Security

**Additional Site Summary Comments:**

**Concerns and Advice to Responders:**

To protect endangered and sensitive species and wetland habitat. Responders should watch for and avoid nesting birds and minimize disturbances to vegetation. Avoid the spread of oil into the wetland through response activities.

**Hazard and Restrictions:****Site Strategies:**

**Strategy: 5-365.1 Objective:** Exclude Oil

*Strategy:* Use deflection boom on the northside of PCH to deflect oil to the beach front north of the Back Bay Science Center at 600 Shellmaker Rd. Use additional deflection booms in a cascade pattern in the channel to deflect oil to collection points.

Table of Response Resources

Equipment	Sub-Type	Size	Unit	QTY	Unit	Last Page Update
Boom	Harbor Boom	18 or 24 inch		1000	feet	<i>Strategy Updated:</i> <i>Last Test: 10/15/2014</i>
Vessel	Boom Boat			1		
Staff	Staff to Deploy			4		

**Logistics:**

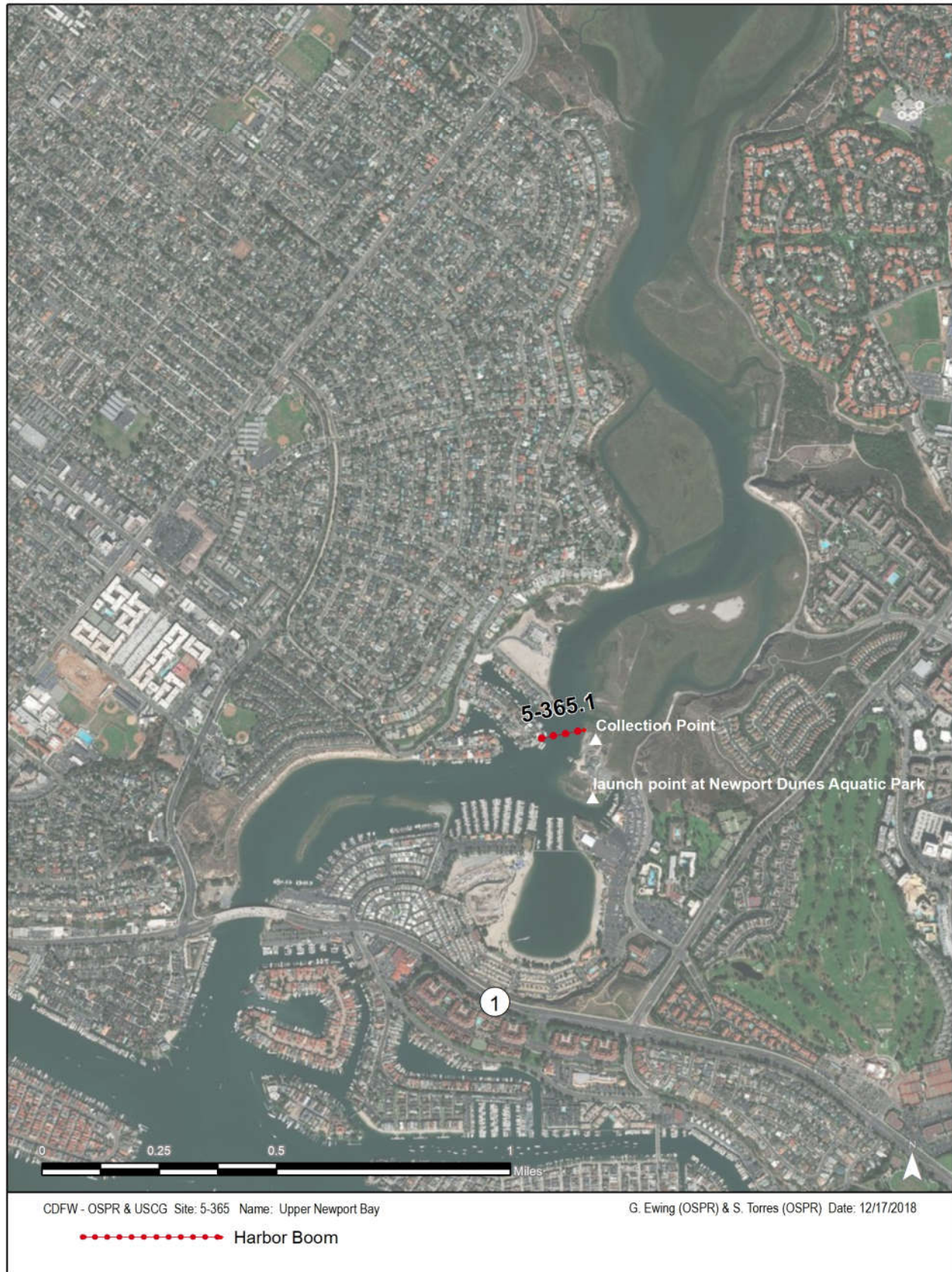
*Directions:* Boat launch available in Newport Bay. From PCH in Newport Beach, go north on Jamboree Rd. then west on Back Bay Dr. Boat launch is at Newport Dunes Aquatic Park at 1131 Back Bay Dr.

*Land Access:* Several points along Back Bay Dr.

*On-Water Limitations:* Shallow water and strong currents. Kayakers. All services available.

*Facilities, Staging Areas, Command Posts, Available Equipment:*

*Communications Problems:* None.



**5-370-A Site Summary - Aliso Creek****5-370-A****County :** Orange **ACP Division/Segment :** OR - D - S006**NOAA Chart :** 18746**Map Book :** 951 B7**Decimal Degrees** 33.51082 -117.75179**Site Description:**

Small creek mouth located in Laguna Beach. During a portion of the year, a sand berm is present which prevents surface flows into the ocean. During winter months, storm water may breach the sand berm at the creek mouth. During this period the lower portion of the creek is subject to tidal flows and wave wash. The area adjacent to the creek mouth is a sandy beach. Site is within the following State Marine Protected Areas(s): Laguna Beach SMCA.

**Resources at Risk:***ESI and Habitat:* 4 Coarse-grained sand beaches**List of Resources at Risk:**

	<b>Resource Name</b>	<b>Status</b>	<b>Presence</b>
Fish	tidewater goby	FE	Year-round

FT-Federally Threatened, FE-Federally Endangered, FP-Federally Protected, SE-State Endangered, ST-State Threatened, SP -State Protected, SR-State Rare, SSC-Species of Special Concern, BGEPA-Bald and Golden Eagle Protection Act, SSSP-State Special Status Species

**List of Key Contacts:**

<b>Type</b>	<b>Name/Title</b>	<b>Organization</b>	<b>Phone</b>
C	/	Office of Historic Preservation	(916) 445-7000
C	/	South Central Coastal Information Center	(657) 278-5395
O	/9am-5pm	Laguna Beach Marine Safety	(949) 494-6571
O	/	Orange County Harbor, Beaches, & Parks (day)	(714) 973-6861
O	/24hr	US Ocean Safety Lifeguards	(949) 276-5050
T	John Kalish/South Coast Field Manager	Bureau of Land Management	(760) 833-7100
T	James Weigand/Ecologist	Bureau of Land Management, Coastal Natl. Monum	(916) 978-4656
T	Becky Ota/Marine Conservation Manager	California Department of Fish & Wildlife, MPAs	(650) 631-6789
T	Joe Dillon/	NOAA National Marine Fisheries Service	(707) 575-6093
T	/Spill Coordinator (24hr)	US Fish and Wildlife Service	(760) 607-9768

C – Cultural, Historic, Archaeological; E – Entry/Owner/Access; O – Other; S – Safety; T – Trustee; X – Exclusion or Security

**Additional Site Summary Comments:**

This site has been identified as being critical for the continued survival of the tidewater goby. An oil spill into this area would be significant in terms of potential impacts on a federally endangered species.

**Concerns and Advice to Responders:**

To protect endangered species critical habitat. Avoid disturbances to the creek. Boom should be staked on the banks, and not anchored.

**Hazard and Restrictions:****Site Strategies:**

**Strategy: 5-370.1 Objective:** Exclude Oil

*Strategy:* Construct sand berm and place harbor boom inside of lagoon to deflect any oil washed over berm to collection site.

Table of Response Resources

Equipment	Sub-Type	Size	Unit	QTY	Unit	Last Page Update
Boom	Harbor Boom	18 or 24 inch		200	feet	<i>Strategy Updated: 12/12/2018</i>
Vessel	Skiff or Punt			1		<i>Last Test: 12/12/2018</i>
Staff	Staff to Deploy			2		
Skiploader						

**Logistics:**

*Directions:* Access to Aliso Creek from the adjacent Aliso County Beach. Aliso Beach is located off Pacific Coast Highway in Laguna Beach.

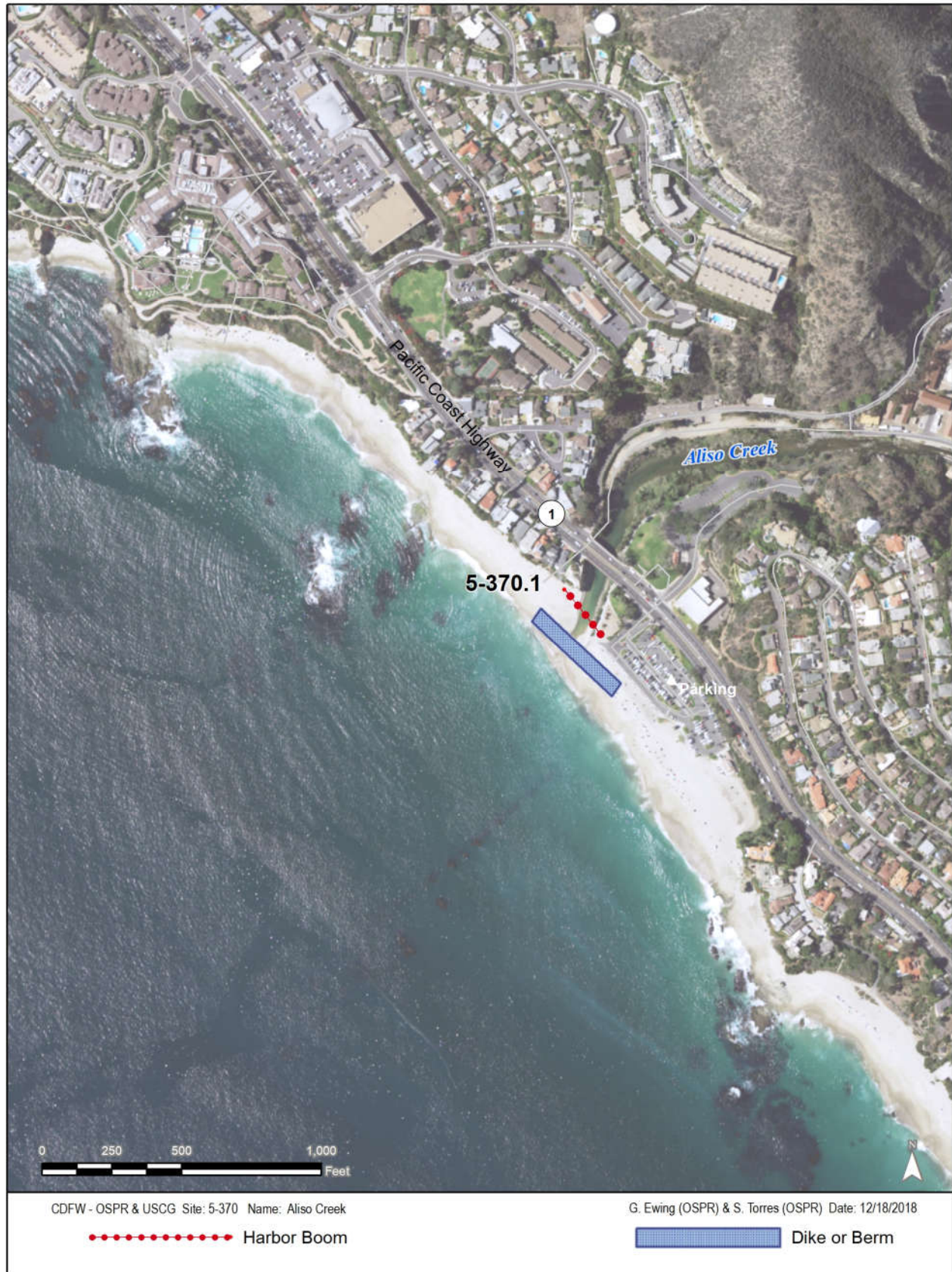
*Land Access:*

*On-Water Limitations:*

*Facilities, Staging Areas, Command Posts, Available Equipment:* Parking lots on both sides of PCH. The lot east of PCH may be the better staging area. Connection to beach is through a pedestrian tunnel.

*Communications Problems:* None.

*Additional Operational Comments:* Notify the California Coastal Commission if a sand berm is required.



**5-380-A Site Summary - Dana Point****5-380-A****County :** Orange **ACP Division/Segment :** OR - D - S009**NOAA Chart :** 18746**Map Book :** 971 F7**Decimal Degrees** 33.4601 -117.7139**Site Description:**

Rocky headland with wave-cut platforms. Harbor seal and California sea lion haul-out area. Site is within the following State Marine Protected Area(s): Dana Point SMCA.

**Resources at Risk:***ESI and Habitat:* 6A Gravel Beach**List of Resources at Risk:**

	<b>Resource Name</b>	<b>Status</b>	<b>Presence</b>
Fishery	spiny lobster - Commercial & Sport		Oct-Mar
Invertebrates	rocky intertidal resources		Year-round
Mammals	marine mammals		Year-round

FT-Federally Threatened, FE-Federally Endangered, FP-Federally Protected, SE-State Endangered, ST-State Threatened, SP -State Protected, SR-State Rare, SSC-Species of Special Concern, BGEPA-Bald and Golden Eagle Protection Act, SSSP-State Special Status Species

**List of Key Contacts:**

<b>Type</b>	<b>Name/Title</b>	<b>Organization</b>	<b>Phone</b>
C	/	Office of Historic Preservation	(916) 445-7000
C	/	South Central Coastal Information Center	(657) 278-5395
O	/24hr	US Ocean Safety Lifeguards	(949) 276-5050
T	John Kalish/South Coast Field Manager	Bureau of Land Management	(760) 833-7100
T	James Weigand/Ecologist	Bureau of Land Management, Coastal Natl. Monum	(916) 978-4656
T	Becky Ota/Marine Conservation Manager	California Department of Fish & Wildlife, MPAs	(650) 631-6789
T	/Orange Coast District	California State Parks	(949) 492-0802
T	Justin Viezbicke/Marine Mammal Stranding	NOAA National Marine Fisheries Service	(562) 506-4315
T	/Spill Coordinator (24hr)	US Fish and Wildlife Service	(760) 607-9768

C – Cultural, Historic, Archaeological; E – Entry/Owner/Access; O – Other; S – Safety; T – Trustee; X – Exclusion or Security

**Additional Site Summary Comments:**

**Concerns and Advice to Responders:**

To protect sensitive species haul-out habitat.

**Hazard and Restrictions:**

Watch weather and sea conditions.

**Site Strategies:**

**Strategy: 5-380.1 Objective:** No Onsite Options: Consider Offshore Containment/Recovery/ART  
*Strategy:* This site is difficult to protect. Mechanical shoreline protection techniques are not likely to be effective because of high wave energy and rocky conditions at the site.

- a) Recommended response strategy is on-water containment and recovery (e.g. towed boom arrays).
- b) Pursue feasibility of alternative response technologies (e.g. dispersants and in-situ burning) to reduce the volume of oil reaching the site.

Table of Response Resources

**Last Page Update**

**Logistics:**

*Directions:* Boat launch available at Dana Pt. Harbor. From PCH in Dana Pt., go south on Del Obispo St. and then left on Embarcadero Pl. to the public boat launch facility.

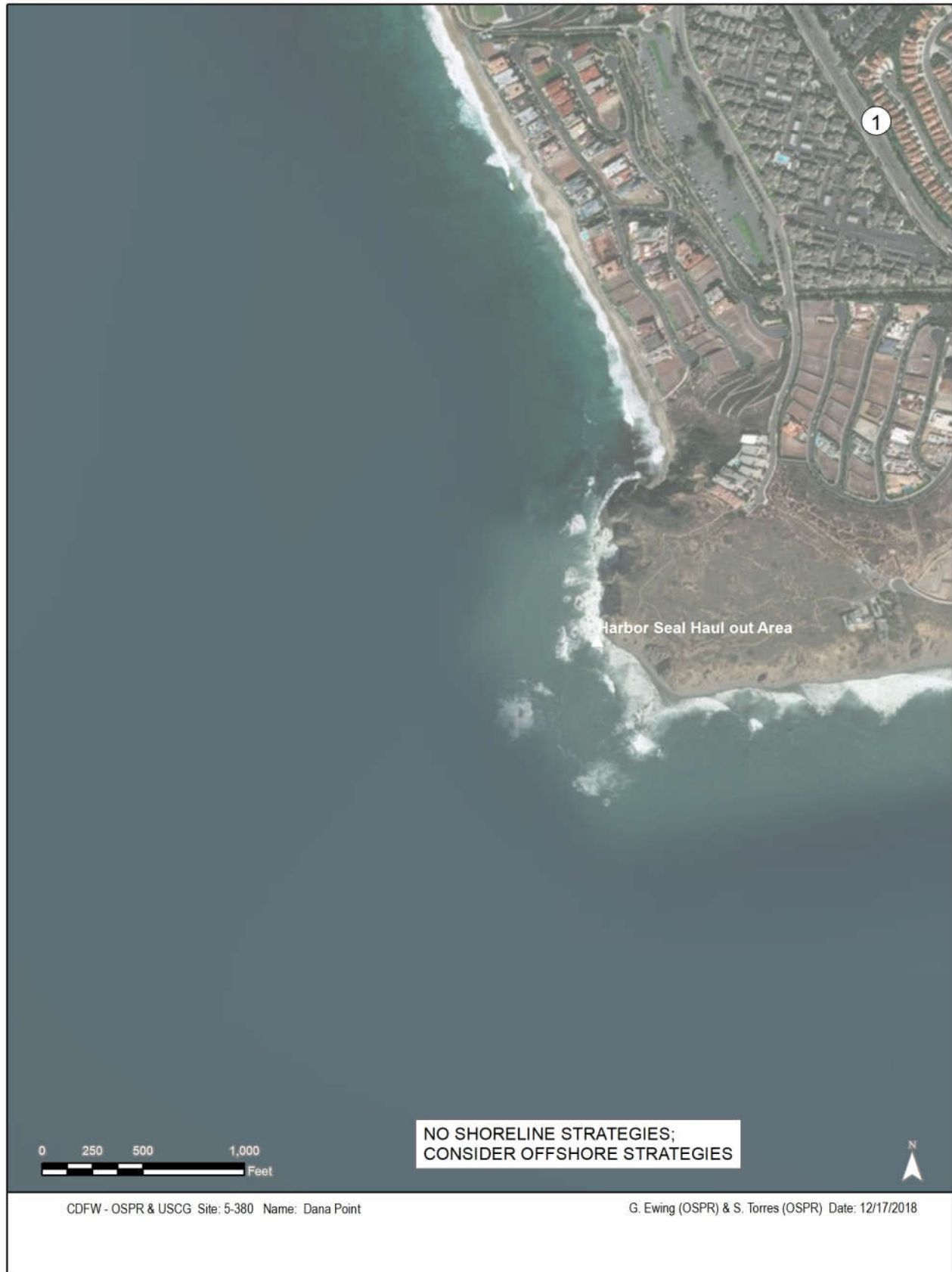
*Land Access:* Access best by boat.

*On-Water Limitations:* Heavy small boat traffic. All services available.

*Facilities, Staging Areas, Command Posts, Available Equipment:* Orange Co. Dept. of Harbor, Beaches and Parks has 1500' of harbor boom staged at the Sheriff's Harbor Patrol Office.

*Communications Problems:* None.





**County** : Orange      **ACP Division/Segment** : OR - E - S001**NOAA Chart** : 18746**Map Book** : 971 H7**Decimal Degrees** 33.4564 -117.69759**Site Description:**

Riprap to 10 feet above mean lower low water.

**Resources at Risk:***ESI and Habitat*: 6B Riprap**List of Resources at Risk:**

Resource Name	Status	Presence
Birds seabirds		Year-round
Birds California brown pelican		Jun-Oct

FT-Federally Threatened, FE-Federally Endangered, FP-Federally Protected, SE-State Endangered, ST-State Threatened, SP -State Protected, SR-State Rare, SSC-Species of Special Concern, BGEPA-Bald and Golden Eagle Protection Act, SSSP-State Special Status Species

**List of Key Contacts:**

Type	Name/Title	Organization	Phone
C	/	Office of Historic Preservation	(916) 445-7000
C	/	South Central Coastal Information Center	(657) 278-5395
O	/24hr	US Ocean Safety Lifeguards	(949) 276-5050
T	John Kalish/South Coast Field Manager	Bureau of Land Management	(760) 833-7100
T	James Weigand/Ecologist	Bureau of Land Management, Coastal Natl. Monum	(916) 978-4656
T	/Orange Coast District	California State Parks	(949) 492-0802
T	/Spill Coordinator (24hr)	US Fish and Wildlife Service	(760) 607-9768

C – Cultural, Historic, Archaeological; E – Entry/Owner/Access; O – Other; S – Safety; T – Trustee; X – Exclusion or Security

**Additional Site Summary Comments:**

During the night, this is a major California brown pelican roosting site.

**Concerns and Advice to Responders:**

To protect endangered and sensitive species roosting habitat.

**Hazard and Restrictions:**

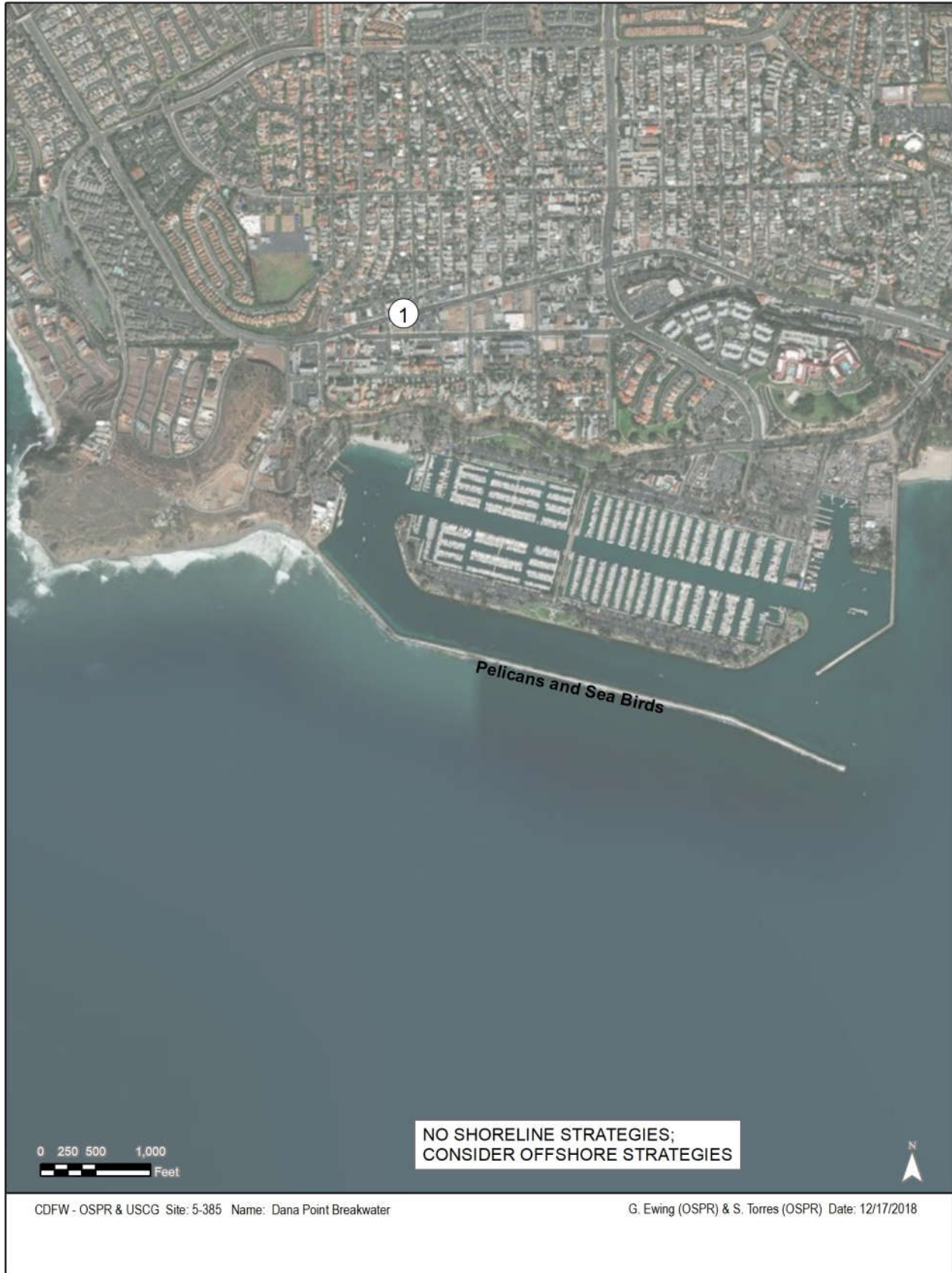
Watch weather and sea conditions. High energy wave action.

**Site Strategies:****Strategy: 5-385.1 Objective:** No Onsite Options: Consider Offshore Containment/Recovery/ART**Strategy:** This site is difficult to protect. Mechanical shoreline protection techniques are not likely to be effective because of high wave energy and rocky conditions at the site.

- Recommended response strategy is on-water containment and recovery (e.g. towed boom arrays).
- Pursue feasibility of alternative response technologies (e.g. dispersants and in-situ burning) to reduce the volume of oil reaching the site.

Table of Response Resources

**Last Page Update****Logistics:***Directions:* Boat launch available at Dana Pt. Harbor. From PCH in Dana Pt., go south on Del Obispo St. and then left on Embarcadero Pl. to the public boat launch facility.*Land Access:* Access best by boat.*On-Water Limitations:* Heavy small boat traffic. All services available.*Facilities, Staging Areas, Command Posts, Available Equipment:**Communications Problems:* None.



**5-390-A Site Summary - San Juan Creek****5-390-A****County :** Orange **ACP Division/Segment :** OR - E - S002 OR - E - S003**NOAA Chart :** 18746 **Map Book :** 972 A7 **Decimal Degrees** 33.46231 -117.6831**Site Description:**

Small coastal creek with marsh and wetlands.

**Resources at Risk:***ESI and Habitat:* 4 Coarse-grained sand beaches**List of Resources at Risk:**

	<b>Resource Name</b>	<b>Status</b>	<b>Presence</b>
Birds	California brown pelican		Jun-Oct
Birds	seabirds		Year-round
Birds	waterfowl		Sep-May
Birds	shorebirds		Year-round

FT-Federally Threatened, FE-Federally Endangered, FP-Federally Protected, SE-State Endangered, ST-State Threatened, SP -State Protected, SR-State Rare, SSC-Species of Special Concern, BGEPA-Bald and Golden Eagle Protection Act, SSSP-State Special Status Species

**List of Key Contacts:**

<b>Type</b>	<b>Name/Title</b>	<b>Organization</b>	<b>Phone</b>
C	/	Office of Historic Preservation	(916) 445-7000
C	/	South Central Coastal Information Center	(657) 278-5395
T	/Orange Coast District	California State Parks	(949) 492-0802
T	/Spill Coordinator (24hr)	US Fish and Wildlife Service	(760) 607-9768

C – Cultural, Historic, Archaeological; E – Entry/Owner/Access; O – Other; S – Safety; T – Trustee; X – Exclusion or Security

**Additional Site Summary Comments:**

**Concerns and Advice to Responders:**

To protect endangered species nesting and foraging habitat.

**Hazard and Restrictions:**

**Site Strategies:**

**Strategy: 5-390.1 Objective:** Exclude Oil

*Strategy:* Sand berm.

Table of Response Resources

Equipment	Sub-Type	Size	Unit	QTY	Unit	Last Page Update
Bulldozer				1		
Staff	Staff to Deploy			2		

**Strategy: 5-390.2 Objective:** Exclude Oil

*Strategy:* Construction of a filter barrier (excellior fence) if shortage of sand or wash-over beach due to high tides or waves.

Table of Response Resources

Equipment	Sub-Type	Size	Unit	QTY	Unit	Last Page Update
Stakes						
	Fencing			1000	feet	
Staff	Staff to Deploy			10		
Staff	Staff to Tend			2		

**Logistics:**

*Directions:* From PCH in Dana Pt., go south on Del Obispo St. and then left into the State Beach.

*Land Access:*

*On-Water Limitations:*

*Facilities, Staging Areas, Command Posts, Available Equipment:*

*Communications Problems:* None.

*Additional Operational Comments:* Notify the California Coastal Commission if a sand berm is required.



### **9817.3 Economic Sensitive Sites**

Refer to Section 9805 for more information.

**9817.3 Economic Sensitive Sites - Orange County****Coastal**

<b>Seal Beach Pier</b>	5-3-OR-100-E	<i>Parks, Beaches, Recreational Areas</i>	<b>E</b>
1 Main St.		Operational Divison: OR-A	33.73995 -118.1058
Seal Beach CA 90740			(562) 430-2613
Pier - fishing and small restaurant.			
<b>Seal Beach</b>	5-3-OR-105-E	<i>Parks, Beaches, Recreational Areas</i>	<b>E</b>
888 Ocean Ave.		Operational Divison: OR-A	33.73836 -118.1047
Seal Beach CA 90740			(562) 430-2613
Beach - day use.			
<b>Sunset Beach</b>	5-3-OR-110-E	<i>Parks, Beaches, Recreational Areas</i>	<b>E</b>
W. of Pacific Ave.		Operational Divison: OR-A	33.7172 -118.0718
Sunset Beach CA 92649			
Beach - day use.			
<b>Huntington Harbor</b>	5-3-OR-115-E	<i>Vessel Traffic Areas</i>	<b>E</b>
E. of Pacific Coast Highway		Operational Divison: OR-A	33.72558 -118.0740
Huntington Beach CA 92649			(714) 433-6400
Harbor- residential harbor, marinas, launch ramps, fuel dock, and restaurants. See following pages for economical sites within Huntington Harbor.			
<b>Bolsa Chica State Beach</b>	5-3-OR-135-E	<i>Parks, Beaches, Recreational Areas</i>	<b>E</b>
17851 Pacific Coast Highway		Operational Divison: OR-A	33.6956 -118.0475
Huntington Beach CA 92649			(714) 846-3460
Beach - day use with parking fee.			
<b>Huntington Beach Pier</b>	5-3-OR-140-E	<i>Parks, Beaches, Recreational Areas</i>	<b>E</b>
60 Main St.		Operational Divison: OR-A	33.65713 -118.0019
Huntington Beach CA 92648			(714) 536-5281
Pier - fishing and restaurants.			
<b>Huntington City Beach</b>	5-3-OR-145-E	<i>Parks, Beaches, Recreational Areas</i>	<b>E</b>
103 Pacific Coast Highway		Operational Divison: OR-B	33.64831 -117.9885
Huntington Beach CA 92648			(714) 536-5281
Beach - day use with parking fee.			
<b>Huntington State Beach</b>	5-3-OR-150-E	<i>Parks, Beaches, Recreational Areas</i>	<b>E</b>
22045 Pacific Coast Highway		Operational Divison: OR-B	33.63937 -117.9737
Huntington Beach CA 92646			(714) 536-1454
Beach - day use with parking fee.			
<b>Newport Beach</b>	5-3-OR-155-E	<i>Parks, Beaches, Recreational Areas</i>	<b>E</b>
West of Ocean Front		Operational Divison: OR-B	33.62233 -117.9430
Newport Beach CA 92663			(949) 644-3309
Beach - day use.			



**9817.3 Economic Sensitive Sites - Orange County****Coastal**

<b>Newport Beach Dory Fishing Fleet</b>	<i>5-3-OR-160-D</i>	<i>Commercial Fishing Areas</i>	<b>D</b>
110 McFadden Place	Operational Divison: OR-B	33.60814	-117.9291
Newport Beach CA 92663		(949) 632-5939	
Fishing fleet that launches from and sells their catch at the north side of the pier.			
<b>Newport Beach Pier</b>	<i>5-3-OR-165-E</i>	<i>Parks, Beaches, Recreational Areas</i>	<b>E</b>
Oceanfront and 21st St.	Operational Divison: OR-B	33.60814	-117.9291
Newport Beach CA 92663		(949) 644-3151	
Pier - fishing.			
<b>Balboa Pier</b>	<i>5-3-OR-170-E</i>	<i>Parks, Beaches, Recreational Areas</i>	<b>E</b>
1 Balboa Pier	Operational Divison: OR-B	33.60111	-117.8999
Newport Beach CA 92661			
Pier - fishing.			
<b>Newport Harbor</b>	<i>5-3-OR-175-E</i>	<i>Vessel Traffic Areas</i>	<b>E</b>
N.E. of Balboa Ave.	Operational Divison: OR-B	33.5949	-117.8797
Newport Beach CA 92661			
Harbor - residential and commercial piers, sport fishing charters, fuel docks, moorings, bait, tackle, marinas, boats, boat repair. See following pages for economical sites within Newport Harbor.			
<b>China Cove Beach</b>	<i>5-3-OR-310-E</i>	<i>Parks, Beaches, Recreational Areas</i>	<b>E</b>
Ocean Blvd. and Fernleaf St.	Operational Divison: OR-C	33.59738	-117.8787
Corona Del Mar CA 92625			
Beach - day use.			
<b>Corona Del Mar State Beach</b>	<i>5-3-OR-315-E</i>	<i>Parks, Beaches, Recreational Areas</i>	<b>E</b>
Iris St. and Ocean Blvd.	Operational Divison: OR-C	33.59454	-117.8747
Corona Del Mar CA 92625		(949) 644-3151	
Beach - day use with fee.			
<b>Crystal Cove State Park</b>	<i>5-3-OR-320-E</i>	<i>Parks, Beaches, Recreational Areas</i>	<b>E</b>
8471 N. Coast Highway	Operational Divison: OR-C	33.58282	-117.8494
Laguna Beach CA 92651		(949) 494-3539	
Beach and recreational park. Marine life refuge offshore.			
<b>Main Beach Park</b>	<i>5-3-OR-325-E</i>	<i>Parks, Beaches, Recreational Areas</i>	<b>E</b>
Broadway St. and Pacific Coast Highway	Operational Divison: OR-D	33.54273	-117.7856
Laguna Beach CA 92651		(949) 497-9229	
Beach - day use.			
<b>Aliso Beach County Park</b>	<i>5-3-OR-330-E</i>	<i>Parks, Beaches, Recreational Areas</i>	<b>E</b>
31131 S. Pacific Coast Highway	Operational Divison: OR-D	33.50989	-117.7514
Laguna Beach CA 92652		(949) 923-2280	
Beach - day use.			

**9817.3 Economic Sensitive Sites - Orange County****Coastal**

<b>Salt Creek Beach Park</b>	5-3-OR-335-E	<i>Parks, Beaches, Recreational Areas</i>	<b>E</b>
33333 S. Coast Highway		Operational Divison: OR-D	33.47709 -117.7192
Dana Point CA 92629			(949) 923-2280
Beach - day use.			
<b>Dana Strand Beach Park</b>	5-3-OR-340-E	<i>Parks, Beaches, Recreational Areas</i>	<b>E</b>
34199 Selva Road		Operational Divison: OR-D	33.4692 -117.7155
Dana Point CA 92629			
Beach - day use.			
<b>Dana Point Harbor</b>	5-3-OR-345-E	<i>Vessel Traffic Areas</i>	<b>E</b>
34571 Golden Lantern		Operational Divison: OR-E	33.45981 -117.6948
Dana Point CA 92629			(949) 388-3663
Harbor - Marinas, sportfishing charters, fuel docks, bait, tackle, boat launch, and marine supplies. See following pages for economical sites within Dana Point Harbor.			
<b>Capistrano Beach Park</b>	5-3-OR-380-E	<i>Parks, Beaches, Recreational Areas</i>	<b>E</b>
35005 Beach Road		Operational Divison: OR-E	33.45536 -117.6683
Capo Beach CA 92675			(949) 923-2280
Beach - day use with fee.			
<b>Doheny State Beach</b>	5-3-OR-385-E	<i>Parks, Beaches, Recreational Areas</i>	<b>E</b>
25300 Dana Point Harbor Dr.		Operational Divison: OR-E	33.46372 -117.6878
Dana Point CA 92629			(949) 496-6171
Beach - day use with fee.			
<b>Poche Beach</b>	5-3-OR-390-E	<i>Parks, Beaches, Recreational Areas</i>	<b>E</b>
2771 N. El Camino Real		Operational Divison: OR-E	33.44144 -117.6447
San Clemente CA 92672			(949) 492-0100
Beach - day use and beach club.			
<b>San Clemente North Beach</b>	5-3-OR-395-E	<i>Parks, Beaches, Recreational Areas</i>	<b>E</b>
1850 Avenida Estacion		Operational Divison: OR-E	33.43082 -117.6317
San Clemente CA 92672			(949) 361-8219
Beach - day use and beach club.			
<b>San Clemente Pier</b>	5-3-OR-400-E	<i>Parks, Beaches, Recreational Areas</i>	<b>E</b>
611 Avenida Victoria		Operational Divison: OR-E	33.41969 -117.6201
San Clemente CA 92672			(949) 361-8237
Pier - fishing and restaurants.			
<b>San Clemente State Beach</b>	5-3-OR-405-E	<i>Parks, Beaches, Recreational Areas</i>	<b>E</b>
225 Avenida Calafia		Operational Divison: OR-E	33.40697 -117.6032
San Clemente CA 92672			(949) 492-3156
Beach - camping and day use with fee.			

**9817.3 Economic Sensitive Sites - Orange County****Huntington Harbor**

---

<b>Sunset Aquatic Marina</b>	<i>5-3-OR-120-E</i>	<i>Marinas/Houseboat Areas</i>	<b>E</b>
2901 Edinger Ave., A		Operational Divison: OR-A	33.7279 -118.0753
Huntington Beach CA 92649			(562) 592-2833
Berthing: 346			
<b>Peter's Landing Marina</b>	<i>5-3-OR-125-E</i>	<i>Marinas/Houseboat Areas</i>	<b>E</b>
16400 Pacific Coast Highway, Ste 108		Operational Divison: OR-A	33.72474 -118.0773
Huntington Beach CA 92649			(562) 592-4441
Berthing: 325			
<b>Huntington Harbor Marina</b>	<i>5-3-OR-130-E</i>	<i>Marinas/Houseboat Areas</i>	<b>E</b>
4281 Warner Ave.		Operational Divison: OR-A	33.712 -118.0524
Huntington Beach CA 92649			(714) 840-5545
Berthing: 168			

**9817.3 Economic Sensitive Sites - Orange County****Newport Harbor**

<b>Davey's Locker Whale Watching/Sportfish</b> 5-3-OR-179-E	<i>Marinas/Houseboat Areas</i> <b>E</b>
400 Main Street	Operational Divison: OR-B 33.60263 -117.8988
Newport Beach CA 92661	(949) 673-1434
Sportfishing charter vessels and whale watching tours.	
<b>Balboa Fun Zone Marina</b> 5-3-OR-180-E	<i>Marinas/Houseboat Areas</i> <b>E</b>
600 E. Bay Ave.	Operational Divison: OR-B 33.6029 -117.8999
Newport Beach CA 92661	(949) 675-8915
Berthing: 22	
<b>Bongos Sportfishing Charters</b> 5-3-OR-185-E	<i>Marinas/Houseboat Areas</i> <b>E</b>
309 Palm St., Suite G	Operational Divison: OR-B 33.60327 -117.9007
Newport Beach CA 92661	(949) 673-2810
Sportfishing charters and 6 pack rentals.	
<b>Newport Landing Sportfishing</b> 5-3-OR-186-E	<i>Marinas/Houseboat Areas</i> <b>E</b>
309 Palm St., #A	Operational Divison: OR-B 33.60363 -117.9007
Newport Beach CA 92661	(949) 675-0550
Sportfishing charter vessels.	
<b>Newport Harbor Yacht Club</b> 5-3-OR-187-E	<i>Marinas/Houseboat Areas</i> <b>E</b>
720 W. Bay Street	Operational Divison: OR-B 33.60547 -117.9097
Newport Beach CA 92661	(949) 673-7730
Private slips and guest moorings.	
<b>American Legion Yacht Club</b> 5-3-OR-190-E	<i>Marinas/Houseboat Areas</i> <b>E</b>
215 15th Street	Operational Divison: OR-B 33.60806 -117.921
Newport Beach CA 92661	(949) 673-5070
Berthing: 48	
<b>Paradiso Yacht Charters</b> 5-3-OR-195-E	<i>Marinas/Houseboat Areas</i> <b>E</b>
632 31st St.	Operational Divison: OR-B 33.61528 -117.9272
Newport Beach CA 92663	(714) 404-0806
Berthing: 6	
<b>Vista Del Lido</b> 5-3-OR-200-E	<i>Marinas/Houseboat Areas</i> <b>E</b>
611 Lido Park Dr.	Operational Divison: OR-B 33.61546 -117.9263
Newport Beach CA 92663	(949) 675-6244
Berthing: 14	
<b>Newport Harbor Shipyard</b> 5-3-OR-205-E	<i>Marinas/Houseboat Areas</i> <b>E</b>
151 Shipyard Way	Operational Divison: OR-B 33.61206 -117.926
Newport Beach CA 92660	(949) 723-6800
Berthing: 264	

**9817.3 Economic Sensitive Sites - Orange County****Newport Harbor**

<b>Lido Yacht Anchorage &amp; Dry Storage</b> 151 Shipyard Way Newport Beach CA 92660 Berthing: 285	5-3-OR-210-E	<i>Marinas/Houseboat Areas</i> <b>E</b> Operational Divison: OR-B 33.61202 -117.9258 (949) 673-9330
<b>Newport Marina</b> 3335 W. Coast Highway Newport Beach CA 92663 Berthing: 34	5-3-OR-215-E	<i>Marinas/Houseboat Areas</i> <b>E</b> Operational Divison: OR-B 33.62067 -117.9276 (949) 642-4644
<b>Port Calypso Marina</b> 2633 W. Coast Highway Newport Beach CA 92663 Berthing: 45	5-3-OR-220-E	<i>Marinas/Houseboat Areas</i> <b>E</b> Operational Divison: OR-B 33.61909 -117.9218 (949) 645-6900
<b>Larsons Shipyard</b> 2705 W. Coast Highway Newport Beach CA 92663 Berthing: 6. Vessel repair.	5-3-OR-225-E	<i>Ship/Boat Repair</i> <b>E</b> Operational Divison: OR-B 33.61987 -117.9238 (949) 548-3641
<b>Charter Yachts of Newport Beach</b> 2547 W. Coast Highway Newport Beach CA 92663 Berthing: 10	5-3-OR-230-E	<i>Marinas/Houseboat Areas</i> <b>E</b> Operational Divison: OR-B 33.61962 -117.9221 (831) 809-1279
<b>Hornblower Cruises</b> 2431 W. Coast Highway Newport Beach CA 92663 Cruise line company.	5-3-OR-235-E	<i>Ferries/Tour Boats</i> <b>E</b> Operational Divison: OR-B 33.6191 -117.9221 (949) 646-0155
<b>Sun Country Yachts</b> 2101 W. Coast Highway Newport Beach CA 92663 Berthing: 18	5-3-OR-240-E	<i>Marinas/Houseboat Areas</i> <b>E</b> Operational Divison: OR-B 33.61812 -117.92 (949) 999-4130
<b>Balboa Bay Club</b> 1221 W. Coast Highway Newport Beach CA 92663 Berthing: 135	5-3-OR-245-E	<i>Marinas/Houseboat Areas</i> <b>E</b> Operational Divison: OR-B 33.61581 -117.9148 (949) 645-5000
<b>Bayshore Marina</b> 2572 Bayshore Dr. Newport Beach CA 92660 Berthing: 134	5-3-OR-250-E	<i>Marinas/Houseboat Areas</i> <b>E</b> Operational Divison: OR-B 33.61595 -117.901 (949) 721-0111

**9817.3 Economic Sensitive Sites - Orange County**

**Newport Harbor**

<b>Bayshore Apartments &amp; Newport Marina</b>	5-3-OR-255-E	<i>Marinas/Houseboat Areas</i>	<b>E</b>
2888 Bay Shore Dr.		Operational Divison: OR-B	33.61591 -117.9075
Newport Beach CA 92663			(949) 825-5250
Berthing: 56			
<b>Balboa Marina</b>	5-3-OR-260-E	<i>Marinas/Houseboat Areas</i>	<b>E</b>
201 E. Coast Highway		Operational Divison: OR-B	33.61592 -117.9001
Newport Beach CA 92660			(949) 721-0111
Berthing: 132			
<b>Bayside Village</b>	5-3-OR-265-E	<i>Marinas/Houseboat Areas</i>	<b>E</b>
300 E. Coast Highway		Operational Divison: OR-B	33.61769 -117.8998
Newport Beach CA 92660			(949) 673-1331
Berthing: 220			
<b>Newport Dunes Marina</b>	5-3-OR-270-E	<i>Marinas/Houseboat Areas</i>	<b>E</b>
1299 N. Bayside Dr.		Operational Divison: OR-B	33.61572 -117.891
Newport Beach CA 92660			(949) 729-1100
Berthing: 430			
<b>Balboa Basin Yacht Club</b>	5-3-OR-275-E	<i>Marinas/Houseboat Areas</i>	<b>E</b>
829 Harbor Island Dr.		Operational Divison: OR-B	33.61069 -117.8947
Newport Beach CA 92660			(714) 746-1341
Berthing: 172			
<b>Villa Cove Marina</b>	5-3-OR-280-E	<i>Marinas/Houseboat Areas</i>	<b>E</b>
1099 Bayside Dr.		Operational Divison: OR-B	33.61054 -117.8905
Newport Beach CA 92660			(949) 721-0111
Berthing: 42			
<b>Bayside Marina</b>	5-3-OR-285-E	<i>Marinas/Houseboat Areas</i>	<b>E</b>
1137 Bayside Dr.		Operational Divison: OR-B	33.61091 -117.8901
Corona Del Mar CA 92625			(949) 721-0111
Berthing: 97			
<b>Bayside Drive County Beach</b>	5-3-OR-289-E	<i>Parks, Beaches, Recreational Areas</i>	<b>E</b>
1401 Bayside Dr.		Operational Divison: OR-B	33.60411 -117.8838
Corona Del Mar CA 92640			(949) 644-3151
Beach - day use.			
<b>Bahia Corinthian Yacht Club</b>	5-3-OR-290-E	<i>Marinas/Houseboat Areas</i>	<b>E</b>
1601 Bayside Dr.		Operational Divison: OR-B	33.60688 -117.8854
Corona Del Mar CA 92625			(949) 644-9530
Berthing: 68			

**9817.3 Economic Sensitive Sites - Orange County**

**Newport Harbor**

---

<b>Balboa Yacht Club</b>	<i>5-3-OR-300-E</i>	<i>Marinas/Houseboat Areas</i>	<b>E</b>
1801 Bayside Dr.		Operational Divison: OR-B	33.6045 -117.8842
Corona Del Mar CA 92625			(949) 673-3515
Berthing: 70			
<b>Kerckhoff Marine Lab</b>	<i>5-3-OR-305-D</i>	<i>Aquariums/Marine Labs</i>	<b>D</b>
101 Dahlia Ave.		Operational Divison: OR-B	33.59735 -117.8779
Corona Del Mar CA 92625			
Research - aquaculture.			

**9817.3 Economic Sensitive Sites - Orange County****Dana Point Harbor**

---

<b>Ocean Institute</b>	<i>5-3-OR-350-D</i>	<i>Aquariums/Marine Labs</i>	<b>D</b>
24200 Dana Point Harbor Dr.	Operational Divison: OR-E	33.46195	-117.7070
Dana Point CA 92629			(949) 496-2274
Research and education center.			
<b>Dana Point Yacht Club</b>	<i>5-3-OR-355-E</i>	<i>Marinas/Houseboat Areas</i>	<b>E</b>
24399 Dana Dr.	Operational Divison: OR-E	33.46057	-117.7043
Dana Point CA 92629			(949) 496-2900
Berthing: 15			
<b>Dana West Yacht Club</b>	<i>5-3-OR-360-E</i>	<i>Marinas/Houseboat Areas</i>	<b>E</b>
24601 Dana Dr.	Operational Divison: OR-E	33.45889	-117.7001
Dana Point CA 92629			(949) 661-1185
Berthing: 1			
<b>Dana Point West Marina</b>	<i>5-3-OR-365-E</i>	<i>Marinas/Houseboat Areas</i>	<b>E</b>
24500 Dana Point Harbor Dr.	Operational Divison: OR-E	33.46233	-117.7001
Dana Point CA 92629			(949) 493-6222
Berthing: 982			
<b>Dana Point Marina Co.</b>	<i>5-3-OR-370-E</i>	<i>Marinas/Houseboat Areas</i>	<b>E</b>
34555 Casitas Place	Operational Divison: OR-E	33.46128	-117.6959
Dana Point CA 92629			(949) 496-6137
Berthing: 1500			
<b>Dana Wharf Whale Watching/Sportfish</b>	<i>5-3-OR-375-E</i>	<i>Marinas/Houseboat Areas</i>	<b>E</b>
34675 Golden Lantern	Operational Divison: OR-E	33.45998	-117.6921
Dana Point CA 92629			(949) 496-5794
Sportfishing charter vessels and whale watching tours.			



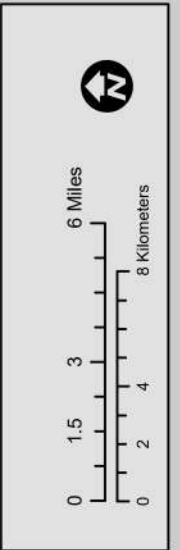
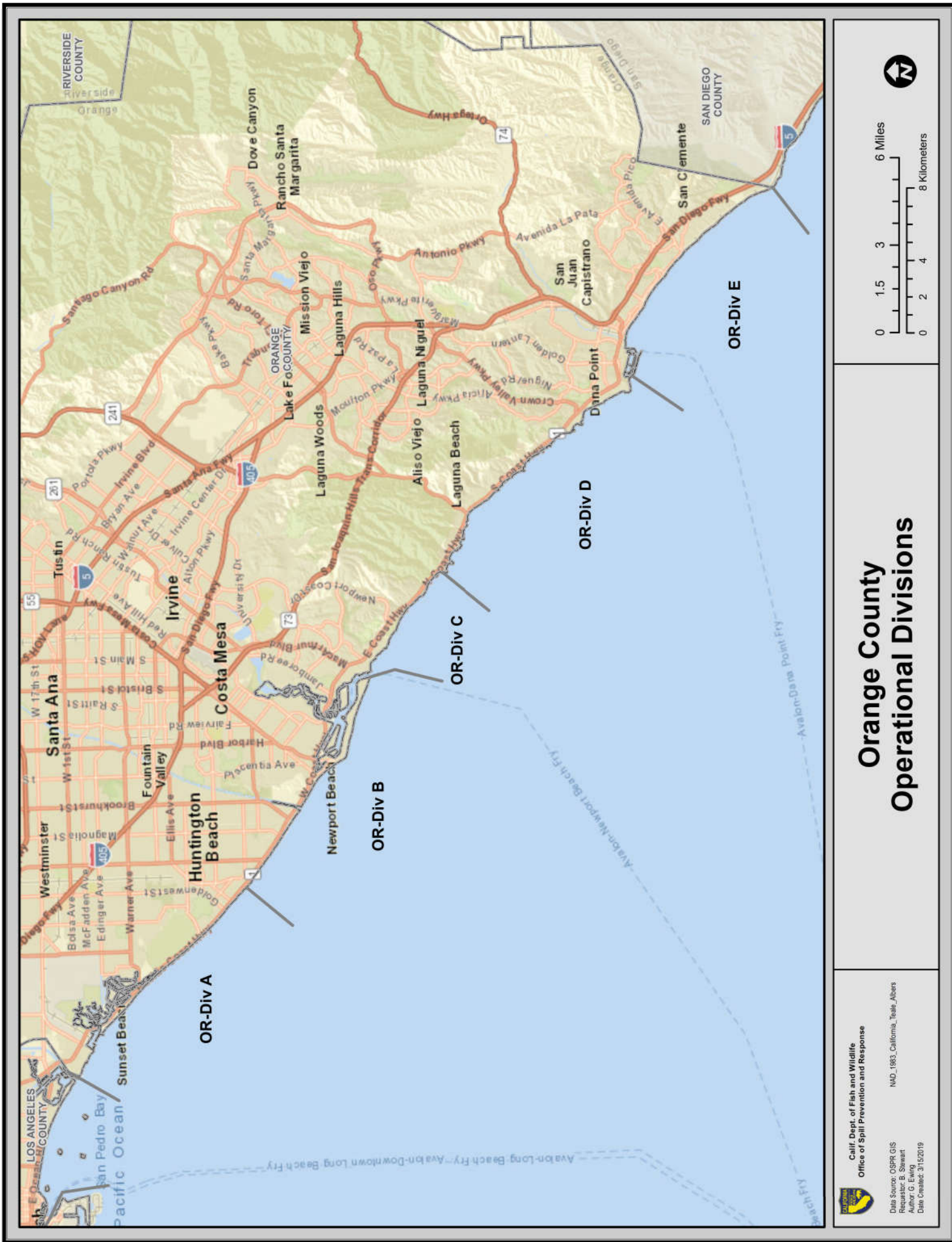
## **9817.3 Economic Sensitive Sites – Orange County Power Plants**

### **AES Huntington Beach**


21730 Newland St.  
Huntington Beach, CA 92646  
(714) 374-1401

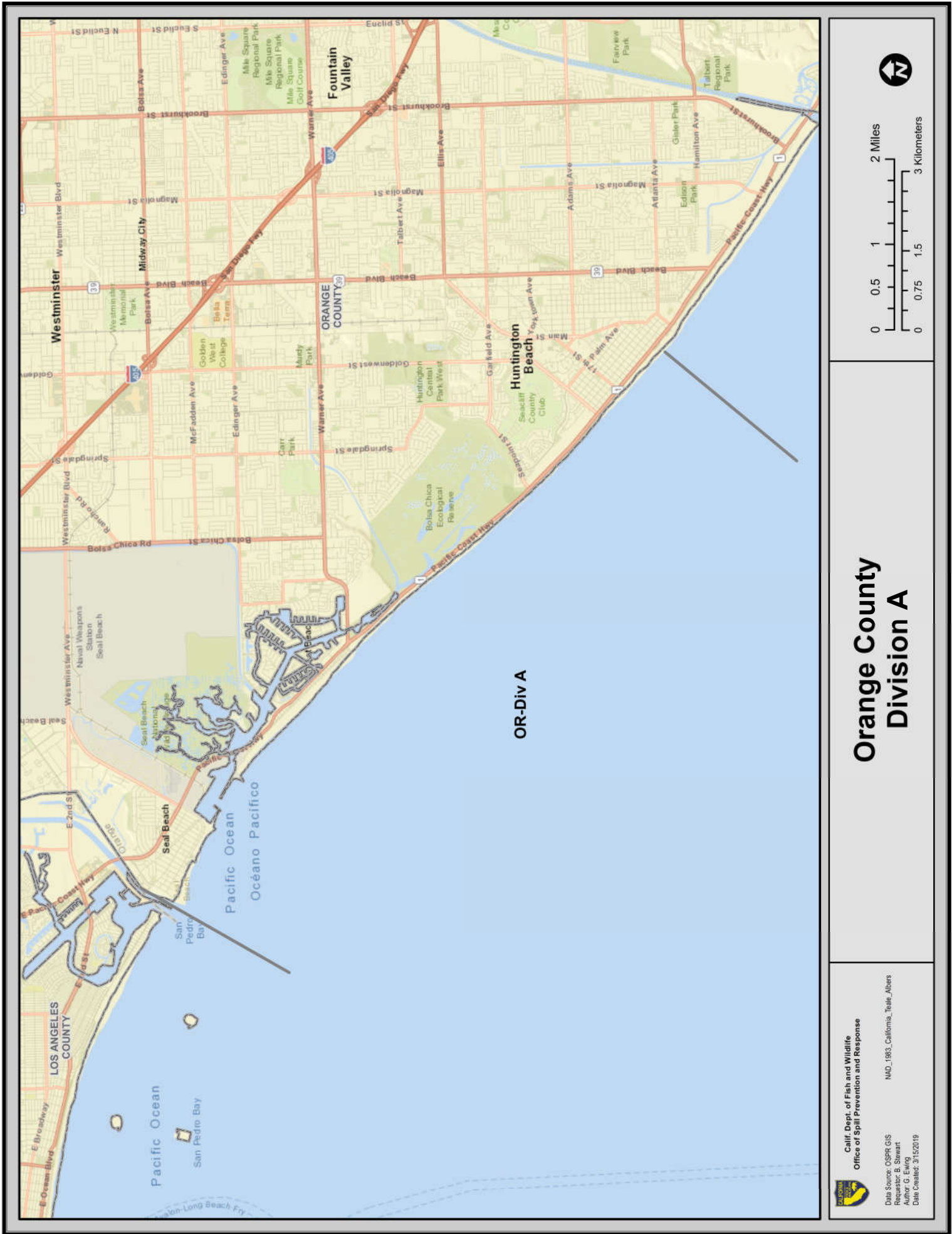
#### **9817.4 Shoreline Operational Divisions**

Refer to Section 9806 for more details.




# Orange County Operational Divisions


**Calif. Dept. of Fish and Wildlife**  
 Office of Spill Prevention and Response  
 NAD: 1983\_California\_Teale\_Abers  
 Data Source: OSPR GIS  
 Prepared by: S. Stewart  
 Author: C. Eickhoff  
 Date Created: 3/15/2019



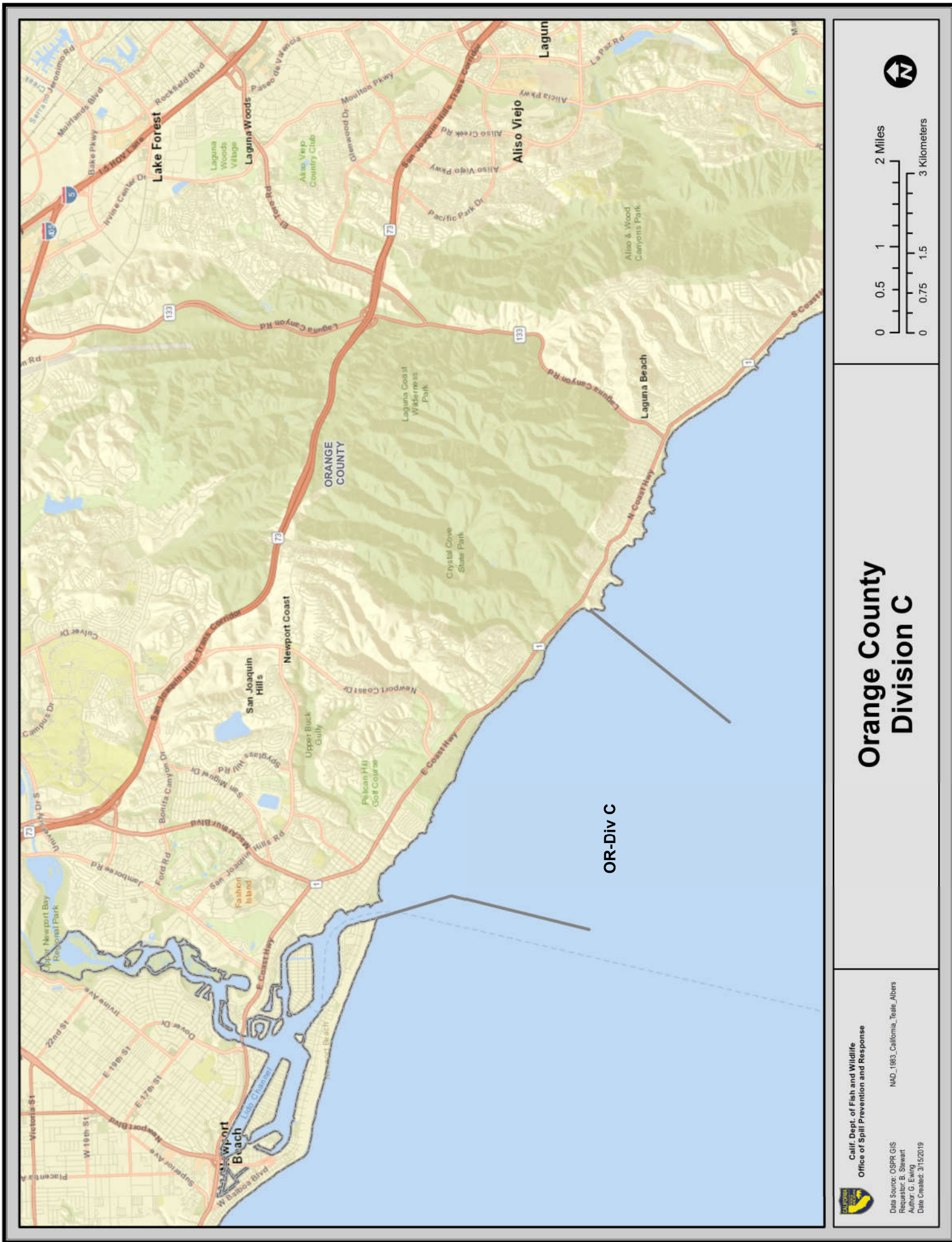
# Orange County Division A


**Calif. Dept. of Fish and Wildlife**  
 Office of Spill Prevention and Response  
 NAD: 1983\_California\_Teale\_Albers  
 Data Source: OSPR GIS  
 Prepared by: S. Stewart  
 Author: C. Fisher  
 Date Created: 3/15/2019



# Orange County Division B


 Calif. Dept. of Fish and Wildlife  
 Office of Spill Prevention and Response  
 NAD: 1983\_California\_Teale\_Albers  
 Data Source: OSPR GIS  
 Prepared by: S. Stewart  
 Author: C. Eakin  
 Date Created: 3/15/2019



# Orange County Division C



 Calif. Dept. of Fish and Wildlife  
 Office of Spill Prevention and Response  
 NAD: 1983\_California\_Teale\_Albers  
 Data Source: OSGPR GIS  
 Prepared by: S. Stewart  
 Author: C. E. Baker  
 Date Created: 3/15/2019



# Orange County Division D


 Calif. Dept. of Fish and Wildlife  
 Office of Spill Prevention and Response  
 NAD\_1983\_California\_Teale\_Albers  
 Data Source: OSPR GIS  
 Prepared by: S. Stewart  
 Author: C. Fisher  
 Date Created: 3/15/2019




 Calif. Dept. of Fish and Wildlife  
 Office of Spill Prevention and Response  
 NAD\_1983\_California\_Teale\_Albers  
 Data Source: OSPR GIS  
 Prepared by: S. Stewart  
 Author: C. Eakin  
 Date Created: 3/15/2019

# Orange County Division E