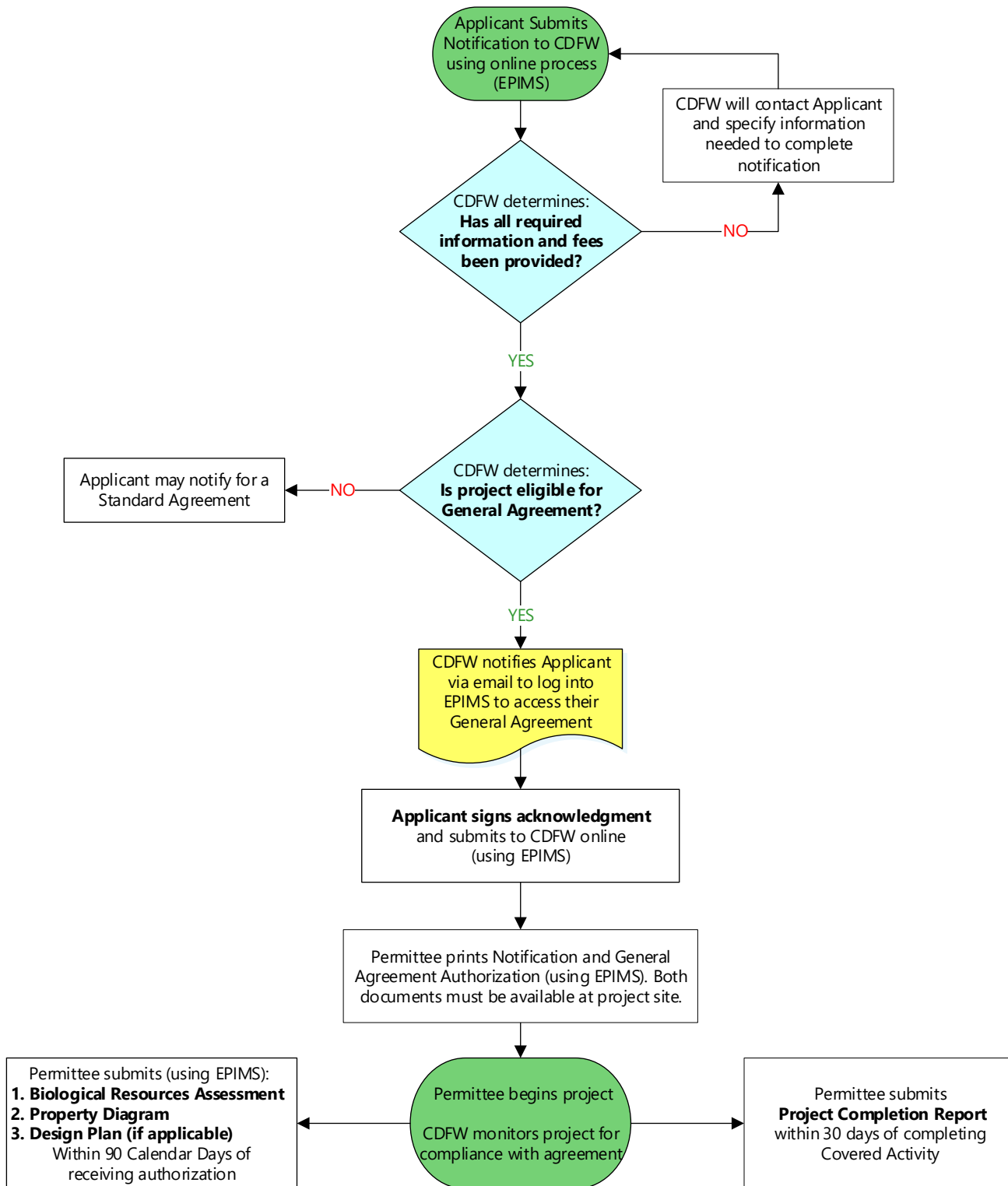


California Department of Fish and Wildlife
**Lake or Streambed Alteration (LSA) Notification Process
 General Agreement for Cannabis Cultivation***



***Applies to the General Agreement for Cannabis Cultivation ONLY:**

- Construction, reconstruction, maintenance, or repair of Stream Crossing (bridge, culvert, or rock ford)
- Water Diversion

The Covered Activities must be on non-fish waters and be used for the purpose of Cannabis Cultivation