

# California Fish and Game Commission

## Wildlife Resources Committee

### Meeting Binder



**January 16, 2020**

**Long Beach**

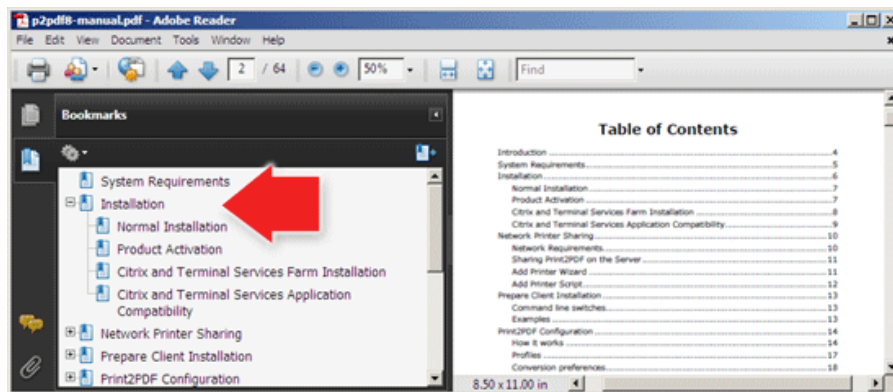
## EASY GUIDE TO USING THE BINDER


Note: We make every effort to ensure that documents we produce are compliant with Americans with Disabilities Act standards, pursuant to state and federal law; however, some materials included in our meeting binders that are produced by other organizations and members of the public may not be compliant.

1. Download and open the binder document using your Adobe Acrobat program/app.
2. If a bookmark panel does not automatically appear on either the top or left side of the screen, click/tap on the “bookmark symbol” located near the top left-hand corner.



3. To make adjustments to the view, use the Page Display option in the View tab. You should see something like:



4. We suggest leaving open the bookmark panel to help you move efficiently among the staff summaries and numerous supporting documents in the binder. It's helpful to think of these bookmarks as a table of contents that allows you to go to specific points in the binder without having to scroll through hundreds of pages.
5. You can resize the two panels by placing your cursor in the dark, vertical line  located between the panels and using a long click /tap to move in either direction.
6. You may also adjust the sizing of the documents by adjusting the sizing preferences located on the Page Display icons found in the top toolbar or in the View tab.
7. Upon locating a staff summary for an agenda item, notice that you can obtain more information by clicking/tapping on any item underlined in blue.
8. Return to the staff summary by simply clicking/tapping on the item in the bookmark panel.
9. Do not hesitate to contact staff if you have any questions or would like assistance.

## OVERVIEW OF FISH AND GAME COMMISSION COMMITTEE MEETING

- Welcome to this meeting of the Wildlife Resources Committee. The Committee is comprised of up to two Commissioners who co-chair each meeting; members are assigned by the Commission annually.
- Our goal today is informed discussion to guide future decision making, and, we need your cooperation to ensure a lively and comprehensive dialogue.
- We are operating under the Bagley-Keene Open Meeting Act, but it is important to note that the Committee chairs cannot take action independent of the full Commission; instead, the chairs make recommendations to the full Commission at regularly scheduled meetings.
- These proceedings may be recorded and posted to our website for reference and archival purposes.
- Items may be heard in any order pursuant to the determination of the Committee Co-Chairs.
- In the unlikely event of an emergency, please locate the nearest emergency exits.
- Restrooms are located \_\_\_\_\_.
- As a general rule, requests for regulatory change need to be redirected to the full Commission and submitted on the required petition form, FGC 1, titled “Petition to the California Fish and Game Commission for Regulation Change” (Section 662, Title 14, CCR). However, at the Committee’s discretion, the Committee may request that staff follow up on items of potential interest to the Committee and possible recommendation to the Commission.
- Committee meetings operate informally and provide opportunity for everyone to provide comment on agenda items. If you wish to speak on an agenda item, please follow these guidelines:
  1. Raise your hand and wait to be recognized by the Committee.
  2. Provide your name, affiliation (if any), and the number of people you represent.
  3. Time is limited; please keep your comments precise to give others time to speak.
  4. If several speakers have the same concerns, please appoint a group spokesperson.
  5. If you would like to present handouts or written materials to the Committee, please provide five copies to the designated staff member just prior to speaking.
  6. If speaking during public comment, the subject matter you present should not be related to any item on the current agenda (public comment on agenda items will be taken at the time the Committee members discuss that item).
- **Warning!** Laser pointers may only be used by a speaker doing a presentation.

# INTRODUCTIONS FOR FISH AND GAME COMMISSION WILDLIFE RESOURCES COMMITTEE MEETINGS

## **Fish and Game Commissioners**

Eric Sklar	Co-Chair (Saint Helena)
Russell Burns	Co-Chair (Napa)

## **Commission Staff**

Melissa Miller-Henson	Executive Director
Ari Cornman	Wildlife Advisor
Craig Castleton	Analyst

## **California Department of Fish and Wildlife**

Stafford Lehr	Deputy Director, Wildlife and Fisheries Division
Kevin Shaffer	Branch Chief, Fisheries Branch
Kari Lewis	Branch Chief, Wildlife Branch
Karen Mitchell	Senior Environmental Scientist, Fisheries Branch
Chris Stoots	Captain, Law Enforcement Division

I would also like to acknowledge special guests who are present:  
*(i.e., elected officials, including tribal chairpersons, and other special guests)*

---

---

---

---

**Commissioners**

**Eric Sklar**, President  
Saint Helena

**Jacque Hostler-Carmesin**, Vice President  
McKinleyville

**Russell E. Burns**, Member  
Napa

**Peter S. Silva**, Member  
Jamul

**Samantha Murray**, Member  
Del Mar

STATE OF CALIFORNIA  
Gavin Newsom, Governor

## Fish and Game Commission



**Melissa Miller-Henson**  
**Executive Director**  
P.O. Box 944209  
Sacramento, CA 94244-2090  
(916) 653-4899  
[fgc@fgc.ca.gov](mailto:fgc@fgc.ca.gov)  
[www.fgc.ca.gov](http://www.fgc.ca.gov)

*Wildlife Heritage and Conservation  
Since 1870*

### WILDLIFE RESOURCES COMMITTEE

Committee Co-chairs: Commissioner Sklar and Commissioner Burns

#### Meeting Agenda

January 16, 2020 at 1:00 p.m.

**Aquarium of the Pacific  
Pacific Visions Conference Room  
100 Aquarium Way, Long Beach, California 90802**

*This meeting will be audio-recorded and made available to the public upon request.*

**Note:** Please see important meeting procedures and information at the end of the agenda. Unless otherwise indicated, the California Department of Fish and Wildlife is identified as Department. All agenda items are informational and/or discussion only. The Committee develops recommendations to the Commission but does not have authority to make policy or regulatory decisions on behalf of the Commission.

Call to order

**1. Approve agenda and order of items**

**2. Public comment for items not on the agenda**

The Committee may not discuss or take action on any matter raised during this item, except to consider whether to recommend that the matter be added to the agenda of a future meeting [Sections 11125, 11125.7(a), Government Code].

**3. Department updates**

The Department will highlight items of note since the last Committee meeting.

- (A) Wildlife Branch
- (B) Fisheries Branch
- (C) Law Enforcement Division

**4. Bullfrogs and non-native turtles**

Receive an update on implementation of the stakeholder engagement plan.

**5. Simplification of statewide inland sport fishing regulations**

Receive an update on the statewide inland sport fishing regulations revision and simplification project, and discuss the proposed changes as they apply to specific waterways.

**6. Future agenda items**

- (A) Review work plan agenda topics and timeline
- (B) Potential new agenda topics for Commission consideration

Adjourn

**California Fish and Game Commission  
2020 Meeting Schedule**

**Note: As meeting dates and locations can change, please visit [www.fgc.ca.gov](http://www.fgc.ca.gov) for the most current list of meeting dates and locations.**

<b>Meeting Date</b>	<b>Commission Meeting</b>	<b>Committee Meeting</b>	<b>Other Meetings</b>
January 17		<b>Tribal</b> Los Angeles area, CA	
February 20 - 21	Natural Resources Building Auditorium, First Floor 1416 Ninth Street Sacramento, CA 95814		
March 5		<b>Wildlife Resources*</b> Natural Resources Building Redwood Room 1416 Ninth Street, 14 <sup>th</sup> Floor Sacramento, CA 95814  (*Purpose of meeting is to discuss 2020 Simplification of Statewide Inland Fishing Regulations proposal)	
March 17		<b>Marine Resources</b> Justice Joseph A. Rattigan Building Conference Room 410 50 D Street, 4 <sup>th</sup> Floor Santa Rosa, CA 95404	
March 18			<b>Annual Tribal Planning</b>
April 15 - 16	Natural Resources Building Auditorium 1416 Ninth Street, 1 <sup>st</sup> Floor Sacramento, CA 95814		
May 14	<b>Teleconference</b> Santa Rosa, Sacramento, Arcata and San Diego		
May 14		<b>Wildlife Resources</b> Justice Joseph A. Rattigan Building Conference Room 410 50 D Street, 4 <sup>th</sup> Floor Santa Rosa, CA 95404	
June 24 - 25	Santa Ana area		
July 21		<b>Marine Resources</b> San Clemente area	

Meeting Date	Commission Meeting	Committee Meeting	Other Meetings
August 18		<b>Tribal</b> Fortuna area	
August 19 - 20	Fortuna area		
September 17		<b>Wildlife Resources</b> Natural Resources Building Redwood Room 1416 Ninth Street, 14 <sup>th</sup> Floor Sacramento, CA 95814	
October 14 - 15	Elihu M Harris Building Auditorium 1515 Clay Street Oakland, CA 94612		
November 9		<b>Tribal</b> Monterey area	
November 10		<b>Marine Resources</b> Monterey area	
December 9 - 10	San Diego area		

### OTHER 2020 MEETINGS OF INTEREST

#### Association of Fish and Wildlife Agencies

- March 8-13, Omaha, NE
- September 13-16, Sacramento, CA

#### Pacific Fishery Management Council

- March 3-9, Rohnert Park, CA
- April 3-10, Vancouver, WA
- June 11-18, San Diego, CA
- September 10-17, Spokane, WA
- November 13-20, Garden Grove, CA

#### Pacific Flyway Council

- March 10 Omaha, NE
- August (date/location TBD)

#### Western Association of Fish and Wildlife Agencies

- January 9-12, Monterey, CA
- July 9-14, Park City, UT

#### Wildlife Conservation Board

- February 26, Sacramento, CA
- May 20, Sacramento, CA
- August 26, Sacramento, CA
- November 18, Sacramento, CA



## IMPORTANT COMMITTEE MEETING PROCEDURES INFORMATION

Welcome to a meeting of the California Fish and Game Commission's Wildlife Resources Committee. The Committee is chaired by up to two Commissioners; these assignments are made by the Commission.

The goal of the Committee is to allow greater time to investigate issues before the Commission than would otherwise be possible. Committee meetings are less formal in nature and provide for additional access to the Commission. The Committee follows the noticing requirements of the Bagley-Keene Open Meeting Act. It is important to note that the Committee chairs cannot take action independent of the full Commission; instead, the chairs make recommendations to the full Commission at regularly scheduled meetings.

The Commission's goal is the preservation of our heritage and conservation of our natural resources through informed decision-making; Committee meetings are vital in developing recommendations to help the Commission achieve that goal. In that spirit, we provide the following information to be as effective and efficient toward that end. Welcome, and please let us know if you have any questions.

### PERSONS WITH DISABILITIES

Persons with disabilities needing reasonable accommodation to participate in public meetings or other Commission activities are invited to contact the Reasonable Accommodation Coordinator at (916) 651-1214. Requests for facility and/or meeting accessibility should be received at least 10 working days prior to the meeting to ensure the request can be accommodated.

### SUBMITTING WRITTEN MATERIALS

The public is encouraged to attend Committee meetings and engage in the discussion about items on the agenda; the public is also welcome to comment on agenda items in writing. You may submit your written comments by one of the following methods (only one is necessary): **Email** to [fgc@fgc.ca.gov](mailto:fgc@fgc.ca.gov); **mail** to California Fish and Game Commission, P.O. Box 944209, Sacramento, CA 94244-2090; **deliver** to California Fish and Game Commission, 1416 Ninth Street, Room 1320, Sacramento, CA 95814; or **hand-deliver to a Committee meeting**.

### COMMENT DEADLINES:

The **Written Comment Deadline** for this meeting is **5:00 p.m. on January 3, 2020**. Written comments received at the Commission office by this deadline will be made available to Commissioners prior to the meeting.

The **Supplemental Comment Deadline** for this meeting is **noon on January 13, 2020**. Comments received by this deadline will be made available to Commissioners at the meeting.

After these deadlines, written comments may be delivered in person to the meeting – please bring five (5) copies of written comments to the meeting.

*The Committee **will not** consider comments regarding proposed changes to regulations that have been noticed by the Commission. If you wish to provide comment on a noticed item, please provide your comments during Commission business meetings, via email, or deliver to the Commission office.*

**Note:** Materials provided to the Committee may be made available to the general public.

## **REGULATION CHANGE PETITIONS**

As a general rule, requests for regulatory change need to be redirected to the full Commission and submitted on the required petition form, FGC 1, *Petition to the California Fish and Game Commission for Regulation Change* (Section 662, Title 14, California Code of Regulations). However, at the Committee's discretion, the Committee may request that staff follow up on items of potential interest to the Committee and possible recommendation to the Commission.

## **SPEAKING AT THE MEETING**

Committee meetings operate informally and provide opportunity for everyone to comment on agenda items. If you wish to speak on an agenda item, please follow these guidelines:

1. Raise your hand and wait to be recognized by the Committee co-chair(s).
2. Once recognized, please begin by giving your name and affiliation (if any) and the number of people you represent.
3. Time is limited; please keep your comments concise so that everyone has an opportunity to speak.
4. If there are several speakers with the same concerns, please try to appoint a spokesperson and avoid repetitive comments.
5. If you would like to present handouts or written materials to the Committee, please provide five copies to the designated staff member just prior to speaking.
6. If speaking during public comment, the subject matter you present should not be related to any item on the current agenda (public comment on agenda items will be taken at the time the Committee members discuss that item). As a general rule, public comment is an opportunity to bring matters to the attention of the Committee, but you may also do so via email or standard mail. At the discretion of the Committee, staff may be requested to follow up on the subject you raise.

## **VISUAL PRESENTATIONS/MATERIALS**

All electronic presentations must be submitted by the **Supplemental Comment Deadline** and approved by the Commission executive director before the meeting.

1. Electronic presentations must be provided by email or delivered to the Commission on a USB flash drive by the deadline.
2. All electronic formats must be Windows PC compatible.
3. It is recommended that a print copy of any electronic presentation be submitted in case of technical difficulties.
4. A data projector, laptop and presentation mouse will be available.

## COMMITTEE STAFF SUMMARY FOR JANUARY 16, 2020 WRC

**2. GENERAL PUBLIC COMMENT****Today's Item****Information** **Action** 

Receive public comments for items not on the agenda.

**Summary of Previous/Future Action (N/A)****Background**

WRC generally receives two types of correspondence or comment under general public comment: requests for WRC to consider new topics, and informational items. As a general rule, requests for regulatory change need to be directed to FGC and submitted on the required petition form, FGC 1, titled "Petition to the California Fish and Game Commission for Regulation Change" (Section 662, Title 14, CCR). However, at the discretion of WRC, staff may be requested to follow up on items of potential interest to WRC and possible recommendation to FGC.

**Significant Public Comments (N/A)****Recommendation**

If WRC wants to recommend any new future agenda items based on issues raised and within FGC's authority, staff recommends holding for discussion under today's Agenda Item 6, *Future agenda items*.

**Exhibits (N/A)****Committee Direction/Recommendation (N/A)**

COMMITTEE STAFF SUMMARY FOR JANUARY 16, 2020 WRC

**3. DEPARTMENT UPDATES**

**Today's Item**

**Information**

**Action**

Receive updates on DFW activities.

**Summary of Previous/Future Actions (N/A)**

**Background**

This is a standing agenda item for DFW to provide updates on activities of interest related to wildlife and inland fisheries.

- (A) Wildlife Branch: Branch Chief Kari Lewis
- (B) Fisheries Branch: Branch Chief Kevin Shaffer
- (C) Law Enforcement Division: Captain Chris Stoots

**Significant Public Comments (N/A)**

**Recommendation (N/A)**

**Exhibits (N/A)**

**Committee Direction/Recommendation (N/A)**

## COMMITTEE STAFF SUMMARY FOR JANUARY 16, 2020 WRC

**4. BULLFROGS AND NON-NATIVE TURTLES****Today's Item****Information** **Action** 

Receive an update on implementation of the bullfrog and non-native turtle stakeholder engagement plan.

**Summary of Previous/Future Actions**

- |                           |                                      |
|---------------------------|--------------------------------------|
| • Project referred to WRC | Dec 12-13, 2018; Oceanside           |
| • Update and discussion   | May 16, 2019; WRC; Sacramento        |
| • Update and discussion   | Sep 10, 2019; WRC; Santa Rosa        |
| • <b>Today's update</b>   | <b>Jan 16, 2020; WRC, Long Beach</b> |

**Background**

Annually there are approximately two million non-native American bullfrogs and 300,000 non-native turtles (mostly red-eared sliders and softshell turtles) imported into California for food and the pet trade. Even though these species are not imported into California with the intention of being released, they have established wild populations that threaten native amphibians, fish, and wildlife by direct predation, competition for resources and habitat, and disease.

In Apr 2017, FGC directed FGC staff, with DFW's assistance, to develop a proposal for stakeholder engagement to further evaluate possible solutions to address the impacts of American bullfrogs and non-native turtles on native wildlife. The staff proposal was presented to FGC in Oct 2017, a revised version was approved by FGC in Oct 2018, and the stakeholder engagement plan was referred to WRC in Dec 2018 to track progress in implementing the plan. WRC received two progress updates in 2019.

Today, staff will provide an update on progress since the Sep 2019 meeting, including planning for future stakeholder meetings.

**Significant Public Comments (N/A)****Recommendation (N/A)****Exhibits (N/A)****Committee Direction/Recommendation (N/A)**

## COMMITTEE STAFF SUMMARY FOR JANUARY 16, 2020 WRC

**5. SIMPLIFICATION OF STATEWIDE INLAND FISHING REGULATIONS****Today's Item****Information** **Action** 

Receive an update on the statewide inland sportfish regulations and simplification project.

**Summary of Previous/Future Actions**

- |                                            |                                      |
|--------------------------------------------|--------------------------------------|
| • Initial WRC introduction                 | Sep 20, 2018; WRC; Sacramento        |
| • Discussed and made “menu” recommendation | Jan 10, 2019; WRC; Ontario           |
| • FGC supported “menu” concept             | Feb 6, 2019; Sacramento              |
| • Update and discussion                    | May 16, 2019; WRC; Sacramento        |
| • <b>Today's update and discussion</b>     | <b>Jan 16, 2020; WRC, Long Beach</b> |
| • Discussion and potential recommendation  | Mar 5, 2020; WRC; Sacramento         |
| • Notice hearing                           | Jun 12-13, 2020; Santa Ana           |

**Background**

A DFW effort to comprehensively simplify inland sportfishing seasons and bag limits for trout waters (excluding anadromous waters) has been underway since 2018. The concept of a “menu” framework on which the rulemaking is based was supported by FGC at its Feb 2019 meeting, following a WRC recommendation. See Exhibit 1 for further background details.

Today, DFW will present its proposal (exhibits 2 – 4), after having incorporated thousands of individual comments from its initial public input period. Three (3) new season and two (2) new bag/possession/gear limit “menu” options have been added since the Feb 2019 draft proposal, for a total of nine (9) season and seven (7) bag/possession/gear limit “menu” options.

To provide additional time for focused discussion of and a potential recommendation on the detailed proposals, FGC approved an additional WRC meeting in Mar 2020. A WRC recommendation would be considered by FGC in Apr 2020 to facilitate a Jun 2020 notice hearing.

**Significant Public Comments (N/A)****Recommendation (N/A)****Exhibits**

1. Staff summary from May 16, 2019 WRC meeting (*for background purposes only*)
2. DFW trout regulations menu overview, received Jan 6, 2020
3. DFW table displaying alphabetical list of waters with current and proposed fishing regulations, received Jan 6, 2020
4. DFW presentation

**Committee Direction/Recommendation (N/A)**

## COMMITTEE STAFF SUMMARY FOR JANUARY 16, 2020 WRC

**6. FUTURE AGENDA ITEMS****Today's Item**Information Action 

Review upcoming agenda items scheduled for the next and future WRC meetings, hear requests from DFW and stakeholders for future agenda items, and identify new items for consideration.

**Summary of Previous/Future Actions**

- |                                                |                                      |
|------------------------------------------------|--------------------------------------|
| • <b>Today's discussion</b>                    | <b>Jan 16, 2020; WRC, Long Beach</b> |
| • FGC potentially approves WRC recommendations | Feb 20-21, 2020; Sacramento          |
| • WRC meeting for single agenda item           | Mar 5, 2020; WRC, Sacramento         |
| • Next regular WRC meeting                     | May 14, 2020; WRC, Santa Rosa        |

**Background**

Committee topics are referred by FGC and scheduled as appropriate. FGC-referred topics and the current schedule are shown in Exhibit 1. WRC agendas currently include two complex and time-intensive topics. The committee has placed emphasis on issues of imminent regulatory importance.

**WRC Work Plan**

*Mar 2020:* The next WRC meeting is an additional meeting added by FGC in Oct 2019 to focus on a single substantive agenda topic, the simplification of statewide inland fishing regulations. Specifically, the meeting will provide for focused discussion of and a potential recommendation on the detailed proposals for simplifying statewide inland fishing regulations.

*May 2020:* Draft agenda topics identified for the May 2020 WRC meeting are shown in Exhibit 1. The list of draft agenda topics for May will be reviewed at the Mar WRC meeting.

**Discuss and Recommend New WRC Topics**

Today provides an opportunity to identify any potential new agenda topics to recommend to FGC for referral to WRC.

**Significant Public Comments (N/A)****Recommendation**

**FGC staff:** Review WRC work plan and current FGC rulemaking timetable (Exhibit 2), and identify any new topics to recommend for WRC evaluation.

**Exhibits**

1. WRC work plan, updated Jan 7, 2020
2. FGC perpetual timetable for anticipated regulatory actions, updated Dec 20, 2019

**Committee Direction/Recommendation (N/A)**

## STAFF SUMMARY FOR MAY 16, 2019

## 6. SIMPLIFICATION OF STATEWIDE INLAND FISHING REGULATIONS

## Today's Item

Information Action 

Receive an update on the simplification of statewide inland fishing regulations rulemaking.

## Summary of Previous/Future Actions

- |                                        |                                      |
|----------------------------------------|--------------------------------------|
| • Initial WRC introduction             | Sep 20, 2018; WRC, Sacramento        |
| • Discussion and “menu” recommendation | Jan 10, 2019; WRC; Ontario           |
| • FGC support of “menu” concept        | Feb 6, 2019; Sacramento              |
| • <b>Today's update and discussion</b> | <b>May 16, 2019; WRC, Sacramento</b> |

## Background

For years, FGC and DFW have received complaints from anglers about the complexity of freshwater sport fishing regulations. Some anglers (or potential anglers) may be dissuaded from fishing due to actual or perceived difficulty in complying with the regulations. For example, currently there are 212 special regulation waters in Section 7.50(b), including 88 different seasons, 13 different size restrictions, 10 different gear restrictions, and 6 different bag and possession limits.

To help address angler concerns, DFW has proposed to change and simplify inland sportfishing seasons and bag limits, for trout waters only; the proposal excludes anadromous waters. The goals for the revisions are:

- maintain or increase angling opportunity;
- improve regulatory consistency across waters;
- align sport fishing regulations with DFW's fisheries management goals and objectives;
- reduce complexity and confusion; and
- protect fishery resources.

In basic terms, DFW designed a framework for the simplification based on a “menu” concept, where one of several predefined season and bag limit combinations would be chosen for specific waterways. In Jan 2019, DFW presented its proposed menu approach to WRC. In Feb 2019, FGC approved WRC's recommendation to support the menu concept, with an expectation that DFW would return to WRC with a more detailed proposal after public outreach meetings.

To date, DFW has held six outreach meetings across the state to solicit input from the public, and has received considerable feedback during and subsequent to the meetings. DFW is currently analyzing and integrating the feedback into its proposal. Today, DFW will update WRC on its efforts to date, outline its future plans for the proposal, and discuss implications for the overall timeline. FGC staff supports the additional effort DFW has made to reach and engage recreational fishermen across the state, and believes that such efforts will ultimately result in a proposal that can be more broadly supported during the rulemaking process.



STAFF SUMMARY FOR MAY 16, 2019

**Significant Public Comments (N/A)**

**Recommendation**

**FGC staff:** Recommend that FGC consider today's discussion regarding potential adjustments to next steps, WRC vetting, and timeline for the statewide inland fishing regulations development and rulemaking. If appropriate, recommend that FGC revise the regulatory timetable to reflect modifications.

**Exhibits (N/A)**

**Committee Direction/Recommendation (N/A)**

**California Department of Fish and Wildlife**  
**Regulations Revision and Simplification Project**  
**Trout Regulations Menu**

History

In 2012, the Department presented to the Commission its proposal to conduct a comprehensive evaluation of the sport fishing regulations to address complaints from anglers regarding the freshwater sport fishing regulations. Many waters have not been monitored for regulation effectiveness and changes in hatchery stocking and angling practices warranted an updated evaluation of the sport fishing regulations. The Commission agreed the regulations were complex and gave its support for this Regulations Revision and Simplification Project (Project). The Department has been working to develop a process to simplify sport fishing regulations guided by five tenets:

1. Maintain or increase angling opportunity;
2. Improve regulatory consistency across waters;
3. Align sport fishing regulations with the Department's current fisheries management goals and objectives;
4. Reduce complexity and confusion; and
5. Protect the resources.

Purpose

As part of the Project, the Department has developed a suite of regulations, or "menu," comprised of angling seasons, bag and possession limits, size limits, and gear restrictions, to standardize and reduce the number of Special Fishing Regulations in Title 14, Section 7.50(b) and eliminate inland waters from the District General Regulations in Title 14, Section 7.00(a-g). This menu is the foundation of the project.

Trout Regulations Menu

After significant review of Special Fishing Regulations in Title 14, Section 7.50(b) it became apparent much of the complexity and associated public frustration stemmed from the diversity of different regulations established over decades that had limited alignment or consistency. The use of District Fishing Regulations in Title 14, Section 7.00 increases confusion and inconsistency by applying political boundaries in contrast to the watershed approach found within the Special Fishing Regulations. Although some of the regulations fit with apparent management objectives, others did not or were no longer valid for current fisheries. The regulations menu described below is the result of a collaborative effort by fisheries biologists throughout the state to standardize the

Special Fishing Regulations based on fisheries management goals, which include maximizing fishing opportunity (most liberal) and protecting sensitive fishery populations (most conservative). The process for developing the menu started with identifying the frequency of the most commonly used special regulations, identifying valid/invalid regulations, and then consolidating the valid regulations into a suite of biologically justifiable regulations that most effectively manage California's trout populations. By achieving statewide consistency across inland trout waters within Special Fishing Regulations, District General Regulations in Title 14 Section 7.00 can be eliminated. District General Regulations will be replaced by a Statewide Regulation for all inland trout waters.

### ***Statewide Regulation***

**Open year-round, 5 fish bag, 10 fish possession limits, no gear restrictions =** Robust, self-sustaining and stocked fisheries w/ maximum sustainable harvest with emphasis on high natural yield and or elevated stocking rates.

### ***Seasons***

- **All year** = Most liberal and focused on maximizing opportunity.
- ***Last Saturday in April through July 31*** = *Alignment with traditional trout opener to support local economic needs, public safety concerns, and local business operations.*
- ***August 1 through October 31*** = *Seasonal protection of fall spawning fish.*
- ***Last Saturday in April through October 31*** = *Alignment with traditional trout opener to support local economic needs, public safety concerns, and local business operations.*
- **Saturday preceding Memorial Day through September 30** = Summer season where both spring and fall spawning fish aggregations occur.
- **Saturday preceding Memorial Day through the last day in February** = Spring fishing closure to protect spring spawning fish.
- **September 1 through November 30** = Fall season to either protect fall spawning fish aggregations or allow angling during the fall when summer temperatures make angling impacts more significant.
- **October 1 through the Friday preceding Memorial Day** = For use in conjunction with a summer season to implement more restrictive bag limits and gear restrictions during spring and fall spawning.
- **Closed to fishing all year** = Most conservative and used to protect populations that are state or federally listed under either Endangered Species Act or imperiled populations that angling could have a significant negative effect.

### ***Bag and Possession Limits and Gear Restrictions***

- **5 trout, no gear restrictions** = (most liberal) Robust, self-sustaining fisheries with low to moderate angling, or stocked fisheries with maximum sustainable harvest.
- **2 trout per day, 4 trout in possession, no gear restrictions** = Limited daily harvest but with additional possession, set for limited effect to hatchery supplemented or productive self-sustaining fisheries to allow some harvest. Moderate concern regarding harvest with no threat to total population or target catch rate.
- **2 trout, artificial lures** = Limited daily harvest without additional possession, set for limited effect to less productive self-sustaining fisheries to allow some harvest. Moderate concern regarding harvest with no threat to total population or target catch rate.
- **2 trout, artificial lures with 14" minimum** = Limited selected harvest with protection for smaller age classes. Allows most individuals to spawn prior to entering the fishery.
- **2 trout, artificial lures with 18" minimum** = Limited selected harvest with protection for smaller age classes in high productivity systems that can produce large fish. Allows individuals to spawn prior to trophy sized harvest.
- **0 trout, barbless artificial lures** = Reduce angling impacts to listed or sensitive populations, mitigate high use areas, seasonally eliminate harvest of spawning fish, or to achieve fast action or trophy fisheries.
- **0 trout, artificial flies with barbless hooks** = (most conservative) Reduce angling impacts to listed or sensitive populations, mitigate high use areas, seasonally eliminate harvest of spawning fish, achieve fast action or trophy fisheries, and or promote/retain unique angling experiences.

**California Department of Fish and Wildlife**  
**Title 14, Section 7.50(b), Alphabetical List of Waters with Special Fishing Regulations**  
**DRAFT for January 2020 Wildlife Resources Committee meeting**  
*New waters are highlighted in green and indicated by "NEW"*

Body of Water	Current Open Season and Special Regulations	Current Daily Bag and Possession Limit	Proposed Open Season	Proposed Daily Bag, Possession Limit, and Gear Restrictions
(1) Alambique Creek (San Mateo Co.).	Last Saturday in Apr. through Nov. 15	5 trout	Saturday preceding Memorial Day through September 30	0 fish bag, artificial lures with barbless hooks
(1.5) Alameda Creek and tributaries (Alameda and Santa Clara cos.).				
(A) Alameda Creek <u>mainstem</u> , and <u>all</u> tributaries downstream of San Antonio, Calaveras, and Del Valle Reservoirs except for Arroyo Del Valle between Bernal Ave. and the Thiessen St. intersection with Vineyard Ave.	Closed to all fishing all year.		Closed to all fishing all year	
(B) Alameda Creek tributaries upstream of San Antonio, Calaveras, and Del Valle Reservoirs.	Last Saturday in Apr. through Nov. 15. Only artificial lures with barbless hooks may be used.	0	Saturday preceding Memorial Day through September 30	0 fish bag, artificial lures with barbless hooks
(4) Almanor Lake tributaries (Lassen, Plumas and Shasta Cos.) upstream to the first lake.	Saturday preceding Memorial Day through Nov. 15	5 per day 10 in possession	Saturday preceding Memorial Day through September 30	5 fish bag, no gear restrictions
(4.5) American River, North Fork, Middle Fork, South Fork and their tributaries above Folsom Lake (Placer, Eldorado, Amador, and Alpine cos.), <u>except Caples Creek. (See Section 7.50(b)(XX.X)</u>	Last Saturday in Apr. through Nov. 15.	5 per day 10 in possession	Saturday preceding Memorial Day through September 30	5 fish bag, no gear restrictions
	Nov. 16 through the Friday preceding the last Saturday in Apr. Only artificial lures with barbless hooks may be used.	0	October 1 through the Friday preceding Memorial Day	0 fish bag, artificial lures with barbless hooks

<b>Body of Water</b>	<b>Current Open Season and Special Regulations</b>	<b>Current Daily Bag and Possession Limit</b>	<b>Proposed Open Season</b>	<b>Proposed Daily Bag, Possession Limit, and Gear Restrictions</b>
(6.5) Antelope Lake tributaries (Plumas Co.).	Saturday preceding Memorial Day through Nov. 15	5 per day 10 in possession	Saturday preceding Memorial Day through September 30	5 fish bag, no gear restrictions
(7) Applegate River and tributaries (Siskiyou Co.).	Last Saturday in Apr. through Nov. 15	5 per day 10 in possession	Move to 7.0 statewide reg	
(9) Arroyo de los Frijoles above Lake Lucerne (San Mateo Co.).	Last Saturday in Apr. through Nov. 15.	5 trout	Move to 7.0 statewide reg	
(12) Arroyo Seco River (Monterey Co.). Also see Section 8.00(c).				
(A) The main stem Arroyo Seco and tributaries above the waterfall located approximately 3.5 miles upstream from the U.S. Forest Service Ranger Station.	Last Saturday in Apr. through Nov. 15.	5	Move to 7.0 statewide reg	
(13.5) Bass Lake (Siskiyou Co.).	Feb. 1 through Sept. 30.	5	Move to 7.0 statewide reg	
(15) Bear Creek and tributaries (Shasta and Siskiyou <del>Co.s</del> .cos.) between Pondosa Way bridge and confluence with Fall River.	Saturday preceding Memorial Day through Nov. 15	5 per day 10 in possession	Saturday preceding Memorial Day through September 30	5 fish bag, no gear restrictions
(18.5) Bear River and tributaries (Placer Co.).				
(A) From Highway 20 south (downstream) 2.5 miles to the abandoned concrete dam (the Boardman Diversion Dam).	Last Saturday in April through Nov. 15 Maximum size limit: 14 inches total length	5 per day 10 in possession	Saturday preceding Memorial Day through the last day in February	5 fish bag, no gear restrictions
(19) Berryessa Lake tributaries (Lake and Napa <del>Co.s</del> .cos.).	Last Saturday in Apr. through Nov. 15	5	Saturday preceding Memorial Day through September 30	2 fish bag, 4 fish in possession, no gear restrictions

Body of Water	Current Open Season and Special Regulations	Current Daily Bag and Possession Limit	Proposed Open Season	Proposed Daily Bag, Possession Limit, and Gear Restrictions
(19.5) Big Bear Lake tributaries (San Bernardino Co.)	Saturday preceding Memorial Day through last day of Feb.	5 per day 10 in possession	Move to 7.0 statewide reg	
(25.5) Boggy Creek (Fresno Co.) and tributaries (tributary to Thomas Edison Lake).	June 1 through October 15.	5 per day 10 in possession	Saturday preceding Memorial Day through September 30	5 fish bag, no gear restrictions
NEW - Boulder Creek (San Diego Co.) upstream of El Capitan Reservoir, and all its tributaries.			All year	2 fish bag, artificial lures
NEW - Bridgeport Reservoir (Mono Co.)			Last Saturday in April through October 31	5 fish bag, no gear restrictions
(26.5) Bridgeport Reservoir Tributaries (Mono Co.). All Bridgeport Reservoir tributaries except Swauger Creek, from Bridgeport Reservoir upstream to Highway 395, and Swauger Creek, from Bridgeport Reservoir upstream to the private property fence line above the Forest Service campground.	Last Saturday in April through the Friday preceding Memorial Day and Oct. 1 through Nov. 15. Minimum size limit: 18 inches total length. Only artificial lures with barbless hooks may be used.	1	Move to 7.0 statewide reg	
	Saturday preceding Memorial Day through Sep. 30.	5 per day 10 in possession		
(27.5) Bucks Lake	All year.	5 trout per day. 10 trout in possession. 10 landlocked salmon per day. 20 landlocked salmon in possession.	Move to 7.0 statewide reg	
(28) Bucks Lake tributaries (Plumas Co.).	Saturday preceding Memorial Day through Sept. 30.	5 per day 10 in possession	Saturday preceding Memorial Day through September 30	5 fish bag, no gear restrictions

<b>Body of Water</b>	<b>Current Open Season and Special Regulations</b>	<b>Current Daily Bag and Possession Limit</b>	<b>Proposed Open Season</b>	<b>Proposed Daily Bag, Possession Limit, and Gear Restrictions</b>
(28.5) Burney Creek (Shasta Co.) from Burney Creek Falls downstream to Lake Britton.	Last Saturday in April through Nov. 15. Only artificial lures with barbless hooks may be used.	2 trout Maximum size limit: 14 inches total length.	All year	0 fish bag, artificial lures with barbless hooks
(29) Butano Creek (San Mateo County)				
(A) Above Butano Falls	Last Saturday in April through Nov. 15	5 per day, 10 in possession	Saturday preceding Memorial Day through September 30	0 fish bag, artificial lures with barbless hooks
(30) Butt Creek and Butt Valley Reservoir Powerhouse Outfall (Plumas Co.).				
(A) Butt Creek.	Saturday preceding Memorial Day through Nov. 15.	5 per day 10 in possession	Saturday preceding Memorial Day through the last day in February	5 fish bag, no gear restrictions
(B) Butt Valley Reservoir powerhouse outfall, from the powerhouse, downstream to a marker adjacent to Ponderosa Flat Campground.	Saturday preceding Memorial Day through Feb. 28.	2	Saturday preceding Memorial Day through the last day in February	2 fish bag, 4 fish possession limit, no gear restrictions
(31) Butt Valley Reservoir (Plumas Co.).	All year	2	All year	2 fish bag, 4 fish possession limit, no gear restrictions
(34) Cache Creek and tributaries (Lake Co.).	Last Saturday in Apr. through Nov. 15	5	Saturday preceding Memorial Day through September 30	5 fish bag, no gear restrictions



Body of Water	Current Open Season and Special Regulations	Current Daily Bag and Possession Limit	Proposed Open Season	Proposed Daily Bag, Possession Limit, and Gear Restrictions
(35.6) Canyon Creek upstream of the falls located about four miles north of the wilderness area boundary. (Trinity Co.)	Last Saturday in April through November 15.	2	Move to 7.0 statewide reg	
NEW - Caples Creek from the confluence with the Silver Fork American River upstream to Caples Lake Dam (El Dorado and Alpine cos.)			All year	0 fish bag, artificial lures with barbless hooks
(35.7) Caribou Reservoir (Plumas County)	Last Saturday in Apr. through Nov. 15	2	Move to 7.0 statewide reg	
(38) Carson River, East Fork and tributaries (Alpine Co.).				
(B) Carson River, East Fork from Hangman's Bridge downstream to Nevada State Line.	All year. Only artificial lures with barbless hooks may be used.	0	All year	2 fish bag, artificial lures, 14 inch minimum
<del>(39) Cassel Forebay (Hat Creek) (Shasta Co.)</del>	See Hat Creek #1 7.50(b)(75).			
<del>(39.3) Castle Creek (Shasta Co.)</del>	<del>Last Saturday in Apr. through Nov. 15. Only artificial lures with barbless hooks may be used.</del>	0		
(39.5) Cedar <del>Cedar</del> Creek and tributaries upstream from Moon Lake access road (Lassen Co.).	Closed to all fishing all year		Saturday preceding Memorial Day through the last day in February	2 fish bag, artificial lures

Body of Water	Current Open Season and Special Regulations	Current Daily Bag and Possession Limit	Proposed Open Season	Proposed Daily Bag, Possession Limit, and Gear Restrictions
(42) Clear Lake tributaries (Lake Co.).	Last Saturday in Apr. through Nov. 15	5	All year	0 fish bag, artificial lures with barbless hooks
(42.5) Cold Creek (Fresno Co.) and tributaries (tributary to Thomas Edison Lake).	June 1 through October 15.	5 per day 10 in possession	Saturday preceding Memorial Day through September 30	5 fish bag, no gear restrictions
(43) Convict Creek (Mono Co.).				
(B) Convict Creek downstream of the U.C. study area.	Last Saturday in April through the Friday preceding Memorial Day and Oct. 1 through Nov. 15. Minimum size limit: 18 inches total length. Only artificial lures with barbless hooks may be used.	2	Saturday preceding Memorial Day through September 30	5 fish bag, no gear restrictions
	Saturday preceding Memorial Day through Sept. 30.	5 per day 10 in possession.		
(C) Convict Creek upstream of the U.C. study area.	Last Saturday in April through Nov. 15.	5 per day 10 in possession.	Move to 7.0 statewide reg	
NEW - Convict Lake (Mono County)			Last Saturday in April through October 31	5 fish bag, no gear restrictions

Body of Water	Current Open Season and Special Regulations	Current Daily Bag and Possession Limit	Proposed Open Season	Proposed Daily Bag, Possession Limit, and Gear Restrictions
(48) Cottonwood Creek (Inyo Co.) <u>and all tributaries upstream from the confluence of the main stem Cottonwood Creek and Little Cottonwood Creek, including the unnamed tributaries flowing through Horseshoe Meadow.</u>			All year	2 fish bag, artificial lures
(A) Cottonwood Creek main stem between mouth of Little Cottonwood Creek and South Fork of Cottonwood Creek.	July 1 through Nov. 15. Only artificial lures with barbless hooks may be used	0		
(B) Cottonwood Creek (1) and tributaries upstream from the confluence of South Fork Cottonwood Creek, (2) Little Cottonwood Creek and tributaries, (3) the South Fork of Cottonwood Creek and tributaries, and (4) the unnamed tributary flowing through Horseshoe Meadow.	July 1 through Nov. 15. Only artificial lures with barbless hooks may be used	5		
(49) Cottonwood Creek drainage lakes (Inyo Co.).				
(A) Cottonwood Lakes 1, 2, 3 and 4 and their tributaries (Inyo Co.).	July 1 through Nov. 15. Only artificial lures with barbless hooks may be used.	0	September 1 through November 30	2 fish bag, artificial lures, 14 inch minimum
(B) All remaining Cottonwood Creek drainage lakes.	July 1 through Nov. 15. Only artificial lures with barbless hooks may be used	5	All year	2 fish bag, artificial lures

Body of Water	Current Open Season and Special Regulations	Current Daily Bag and Possession Limit	Proposed Open Season	Proposed Daily Bag, Possession Limit, and Gear Restrictions
(49.5) Cottonwood Creek and tributaries (Modoc Co.).	Saturday preceding Memorial Day through Nov. 15. Only artificial lures with barbless hooks may be used.	0		
(52) Crooked Creek (Mono Co.).				
(B) Crooked Creek and tributaries above the Los Angeles gauging station.	Last Saturday in April through Nov. 15. Only artificial lures with barbless hooks may be used.	0	All year	0 fish bag, artificial flies and barbless hooks
(53) Crowley Lake (Mono Co.). (See individual listings for regulations on tributary waters which include: Convict, Crooked, Hilton, Hot, McGee, and Whiskey creeks and the upper Owens River).				
(B) Crowley Lake, except for the closed area near the outlet dam (see above).	Last Saturday in Apr. through July 31.	5 per day 10 in possession	Last Saturday in April through July 31	5 fish bag, no gear restrictions
	Aug. 1 through Nov. 15. Minimum size limit: 18 inches total length. Only artificial lures with barbless hooks may be used.	2	August 1 through October 31	2 fish bag, artificial lures, 18 inch minimum
(53.5) Davis Creek ( <u>Goose Lake tributary</u> ) and tributaries (Modoc County)	Saturday preceding Memorial Day through Nov. 15.	0	Saturday preceding Memorial Day through the last day in February	5 fish bag, no gear restrictions
(54) Davis Lake tributaries (Plumas Co.).	Saturday preceding Memorial Day through Nov. 15.	5 per day 10 in possession	Saturday preceding Memorial Day through the last day in February	5 fish bag, no gear restrictions

Body of Water	Current Open Season and Special Regulations	Current Daily Bag and Possession Limit	Proposed Open Season	Proposed Daily Bag, Possession Limit, and Gear Restrictions
(54.5) Deadman Creek (Mono Co.).				
(A) Deadman Creek downstream from Hwy. 395. See Owens River 7.50(b)(134).	Last Saturday in April through Nov. 15. Maximum size limit: 16 inches total length. Only artificial lures with barbless hooks may be used.	2	All year	0 fish bag, artificial lures with barbless hooks
	Nov. 16 through the Friday preceding the last Saturday in Apr. Only artificial lures with barbless hooks may be used	0		
(B) Deadman Creek upstream from Hwy. 395.	Last Saturday in April through Nov. 15.	5 per day 10 in possession.	Move to 7.0 statewide reg	
(58) Diaz Lake (Inyo Co.).	First Saturday in Mar. through Nov. 15.	5 per day 10 in possession	Move to 7.0 statewide reg	
	Nov. 16 through the Friday preceding the first Saturday in Mar.	5		
NEW - Dismal Creek (Modoc County)			Saturday preceding Memorial Day through the last day in February	0 fish bag, artificial lures with barbless hooks
(61) Eagle Lake and tributaries (Lassen Co.).				

Body of Water	Current Open Season and Special Regulations	Current Daily Bag and Possession Limit	Proposed Open Season	Proposed Daily Bag, Possession Limit, and Gear Restrictions
(A) Eagle Lake.	Saturday preceding Memorial Day through Dec. 31.	2 per day 4 in possession.	Saturday preceding Memorial Day through the last day in February	2 fish bag, 4 fish in possession, no gear restrictions
(C) Eagle Lake tributaries, including Pine Creek <del>above State Hwy. 44.</del>	Saturday preceding Memorial Day through Nov. 15.	5 per day 10 in possession	Saturday preceding Memorial Day through the last day in February	5 fish bag, no gear restrictions
<del>(62.5) Edson Creek and all tributaries (Siskiyou Co.).</del>	<del>See McCloud River 7.50(b)(115).</del>			
(63) Eel River (Humboldt, Lake, Mendocino and Trinity cos.).				
<u>Eel River above Lake Pillsbury and tributaries to Lake Pillsbury (Lake Co.).</u>			Saturday preceding Memorial Day through the last day in February	5 fish bag, no gear restrictions
(B) Van Duzen River				
1 Mainstem and tributaries <del>above</del> <u>upstream of Eaton Falls</u> , located about 1/2 mile upstream of the mouth of the South Fork (Little Van Duzen) and 2 1/2 miles <u>downstream</u> of Dinsmore (Humboldt and Trinity cos.)	Last Saturday in Apr. through Nov. 15.	5	Saturday preceding Memorial Day through September 30	5 fish bag, no gear restrictions
(D) Middle Fork Eel River				

Body of Water	Current Open Season and Special Regulations	Current Daily Bag and Possession Limit	Proposed Open Season	Proposed Daily Bag, Possession Limit, and Gear Restrictions
2. <del>Eel River Middle Fork tributaries above Indian Dick/Eel River Ranger Station Road (M1) (Mendocino and Trinity cos.)</del> <u>Eel River Middle Fork tributaries (Hammerhorn Creek, Rattlesnake Creek, Beaver Creek, Fly Creek, and Bar Creek) upstream of USFS M1 Road crossing (Mendocino and Trinity cos.)</u>	Last Saturday in Apr. through Nov. 15. Maximum size limit: 14 inches total length. Only artificial lures with barbless hooks may be used.	5	Saturday preceding Memorial Day through the last day in February	2 fish bag, artificial lures
3. <del>Eel River Middle Fork and tributaries above mouth of Uhl Creek (Trinity Co.)</del> <u>Eel River Middle Fork and tributaries upstream of mouth of Uhl Creek (Trinity Co.)</u>	Last Saturday in Apr. through Nov. 15. Maximum size limit: 14 inches total length. Only artificial lures with barbless hooks may be used.	2	Saturday preceding Memorial Day through the last day in February	2 fish bag, artificial lures
4. <del>Balm of Gilead Creek above falls located 1.2 miles from mouth (Trinity Co.)</del> <u>Balm of Gilead Creek, upstream of falls located 1.2 miles from mouth and one mile downstream of Wright's Valley Trail crossing (Trinity Co.)</u>	Last Saturday in Apr. through Nov. 15. Maximum size limit: 14 inches total length. Only artificial lures with barbless hooks may be used.	2	Saturday preceding Memorial Day through the last day in February	2 fish bag, artificial lures
5. <del>Eel River North Fork of Middle Fork above Willow Creek (Trinity Co.)</del> <u>Eel River North Fork of the Middle Fork upstream of mouth of Willow Creek (Trinity Co.)</u>	Last Saturday in Apr. through Nov. 15. Maximum size limit: 14 inches total length. Only artificial lures with barbless hooks may be used.	2	Saturday preceding Memorial Day through the last day in February	2 fish bag, artificial lures

Body of Water	Current Open Season and Special Regulations	Current Daily Bag and Possession Limit	Proposed Open Season	Proposed Daily Bag, Possession Limit, and Gear Restrictions
(67) Fall River <u>Complex</u> (Shasta Co.).				
(A) Fall River from its origin at Thousand Springs downstream to the <u>PG&amp;E Pit #1 Diversion Dam, including all lakes, tributaries, and springs, excluding Bear Creekmouth of the Tule River and including Spring Creek and excluding all other tributaries.</u>	Last Saturday in Apr. through Nov. 15. Maximum size limit: 14 inches total length. Only artificial lures with barbless hooks may be used.	2	Saturday preceding Memorial Day through September 30	2 fish bag, artificial lures
			October 1 through the Friday preceding Memorial Day	0 fish bag, artificial lures with barbless hooks
(68.1) Feather River, Middle Fork (Plumas Co.), from the Union Pacific Railroad Bridge (1/4 mile upstream of County A-23 bridge) to the Mohawk Bridge.	First Saturday in April through Nov. 15.	5 per day 10 in possession	Move to 7.0 statewide reg	
(68.2) Feather River North Fork from Belden Bridge downstream to Cresta Powerhouse (excluding reservoirs) (Butte and Plumas Co.).	Last Saturday in Apr. through Nov. 15. Only artificial lures with barbless hooks may be used.	0	Saturday preceding Memorial Day through the last day in February	0 fish bag, artificial lures with barbless hooks
(68.3) Fish Slough (Mono Co.).				
(B) All other portions of Fish Slough. Also, see Section 5.00(b)(16) for black bass regulations.	Last Saturday in Apr. through Nov. 15.	5	Move to 7.0 statewide reg	
	Nov. 16 through the Friday preceding the last Saturday in Apr.	0		



Body of Water	Current Open Season and Special Regulations	Current Daily Bag and Possession Limit	Proposed Open Season	Proposed Daily Bag, Possession Limit, and Gear Restrictions
(69.5) Freshwater Lagoon (Humboldt Co.).	All year.	5 per day 10 in possession	Move to 7.0 statewide reg	
(71) Golden Trout Wilderness Area (Tulare Co.), excluding the main stem Kern River (see subsection 7.50(b)(86), and the Tule River drainage (See subsection 7.50(b)(197)).	Last Saturday in Apr. through Nov. 15. Only artificial lures with barbless hooks may be used.	5	Saturday preceding Memorial Day through the last day in February	5 fish bag, no gear restrictions
NEW - Goose Lake and tributaries (Modoc County), excluding Pine Creek and Davis Creek (See subsections 7.50(b)(XX) and (7.50(b)(XX)).			Saturday preceding Memorial Day through the last day in February	0 fish bag, artificial lures with barbless hooks
NEW - Grant Lake (Mono Co.)			Last Saturday in April through October 31	5 fish bag, no gear restrictions
(71.5) Grass Valley Creek Reservoir (Trinity Co.)	All year. Only artificial lures with barbless hooks may be used.	2 trout.	Move to 7.0 statewide reg	
NEW - Gull Lake (Mono Co.)			Last Saturday in April through October 31	5 fish bag, no gear restrictions
(74) Hat Creek (Shasta Co.) from Lake Britton upstream to Baum Lake, exclusive of the concrete Hat No. 2 intake canal between Baum Lake and the Hat No. 2 Powerhouse.	Last Saturday in Apr. through Nov.15. Minimum size limit:18 inches total length. Only artificial lures with barbless hooks may be used. Aquatic invertebrates of the orders Plecoptera (stoneflies), Ephemeroptera (mayflies) and Trichoptera (caddisflies) may not be taken or possessed	2	All year	0 fish bag, artificial lures with barbless hooks

Body of Water	Current Open Season and Special Regulations	Current Daily Bag and Possession Limit	Proposed Open Season	Proposed Daily Bag, Possession Limit, and Gear Restrictions
(75) Hat Creek No.1 and Cassel Forebays (Shasta Co.). Those portions of Hat Creek known as No. 1 Forebay and Cassel Forebay.	Last Saturday in Apr. through Nov. 15	5 per day 10 in possession	Move to 7.0 statewide reg	
(76) Heenan Lake and tributaries (Alpine Co.).				
(A) Heenan Lake.	Only on Fridays, Saturdays, and Sundays from the Friday before Labor Day through the last Sunday in October. Fishing hours: Only from sunrise to sunset. Only artificial lures with barbless hooks may be used.	0	September 1 through November 30	0 fish bag, artificial lures with barbless hooks
(77) Hennessey Lake tributaries (Napa Co.).	Last Saturday in Apr. through Nov. 15	5	Saturday preceding Memorial Day through September 30	2 fish bag, 4 fish possession limit, no gear restrictions
(77.3) Hilton Creek (Mono Co.).				
(A) Hilton Creek downstream from Crowley Lake Drive.	Last Saturday in April through the Friday preceding Memorial Day and Oct. 1 through Nov. 15. Minimum size limit: 18 inches total length. Only artificial lures with barbless hooks may be used.	2	Saturday preceding Memorial Day through September 30	5 fish bag, no gear restrictions
	Saturday preceding Memorial. Day through Sept. 30.	5 per day 10 in possession.		

Body of Water	Current Open Season and Special Regulations	Current Daily Bag and Possession Limit	Proposed Open Season	Proposed Daily Bag, Possession Limit, and Gear Restrictions
(B) Hilton Creek upstream from Crowley Lake Drive.	Last Saturday in April through Nov. 15.	5 per day 10 in possession.	Move to 7.0 statewide reg	
(77.5) Hobart Creek (Tuolumne Co.), tributary to Spicer Meadows Reservoir.	July 1 through Nov. 15.	5 per day, 10 in possession	Move to 7.0 statewide reg	
<b>NEW - Horseshoe Lake (Mono Co.)</b>			Last Saturday in April through October 31	5 fish bag, no gear restrictions
(80) Independence Lake and tributaries (Nevada and Sierra <del>Co.</del> <u>cos.</u> ).	NOTE: ALL LAHONTAN CUTTHROAT TROUT TAKEN SHALL BE IMMEDIATELY RETURNED TO THE WATER			
(B) Independence Lake except Independence Lake within 300 feet of the mouths of all tributaries.	All year Only artificial lures with barbless hooks may be used	5 per day 10 in possession	Saturday preceding Memorial Day through September 30	0 fish bag, artificial lures with barbless hooks
(82) Inyo County, Southwestern Portion, in all waters bounded by the Inyo County line on the south and west, Independence Creek on the north, and Highway 395 on the east (also see Cottonwood Creek Restrictions.)	First Sat. in March through Nov. 15.	5 per day 10 in possession	Move to 7.0 statewide reg	
<b>NEW - June Lake (Mono Co.)</b>			Last Saturday in April through October 31	5 fish bag, no gear restrictions
(84.5) Kaweah River and tributaries (Tulare Co.).	All year.	5 per day 10 in possession	Move to 7.0 statewide reg	
(85) Kent Lake tributaries (Marin Co.).	Last Saturday in Apr. through Nov. 15	5	Saturday preceding Memorial Day through September 30	2 fish bag, 4 fish in possession, no gear restrictions
(86) Kern River (Kern and Tulare <del>Co.</del> <u>cos.</u> ).				

Body of Water	Current Open Season and Special Regulations	Current Daily Bag and Possession Limit	Proposed Open Season	Proposed Daily Bag, Possession Limit, and Gear Restrictions
(A) From Lake Isabella to the Johnsondale bridge.	All year.	5 per day 10 in possession	Move to 7.0 statewide reg	
(B) From Johnsondale bridge upstream to the mouth of Tyndall Creek. <del>point where U.S. Forest Service Trail 33E30 heads east to join the Rincon Trail.</del>	Last Saturday in Apr. through Nov. 15. Minimum size limit: 14 inches total length. Only artificial lures with barbless hooks may be used.	2	Saturday preceding Memorial Day through the last day in February	2 fish bag, artificial lures
	Nov. 16 through the Friday preceding the last Saturday in Apr. Only artificial lures with barbless hooks may be used.	0		
<del>(C) From the point where U.S. Forest Service Trail 33E30 heads east to join the Rincon Trail upstream to the mouth of Tyndall Creek.</del>	<del>Last Saturday in Apr. through Nov. 15. Maximum size limit: 10 inches total length for rainbow trout only. Only artificial lures with barbless hooks may be used.</del>	<del>2</del>		
(87) Kings River (Fresno Co.).				
(A) Kings River, South Fork from its confluence with Copper Creek downstream to the Highway 180 crossing at Boyden Cave.	All year.	2	All year	2 fish bag, 4 fish in possession, no gear restrictions
(C) Kings River, from Garnet Dike Campground downstream to Pine Flat Lake.	All year.	2	All year	2 fish bag, 4 fish in possession, no gear restrictions

Body of Water	Current Open Season and Special Regulations	Current Daily Bag and Possession Limit	Proposed Open Season	Proposed Daily Bag, Possession Limit, and Gear Restrictions
(D) Kings River from Pine Flat Dam downstream to U. S. Army Corps of Engineers Bridge on Pine Flat Road.	Last Saturday in Apr. through Nov. 15.	5	Closed to all fishing all year	
(89) Kirman (Carmen) Lake <u>and tributaries</u> (Mono Co.).	Last Saturday in Apr. through Nov. 15. Minimum size limit: 16 inches total length. Only artificial lures with barbless hooks may be used.	2	All year	2 fish bag, artificial lures, 18 inch minimum
<del>(90) Kirman (Carmen) Lake tributaries (Mono Co.).</del>	Closed to all fishing all year.			
NEW - Kitchen Creek (San Diego Co.) upstream of Lake Morena, and all its tributaries.			All year	2 fish bag, artificial lures
<del>(91) Klamath River Regulations (See Section 1.74 for salmon punch card requirements.</del>				
(A) Klamath River main stem and all tributaries above Iron Gate Dam, <del>except Shovel Creek and tributaries.</del> The Klamath River main stem within 250 feet of the mouth of Shovel Creek is closed to all fishing November 16 through June 15.	Last Saturday in Apr. through Nov. 15	5 per day 10 in possession	Saturday preceding Memorial Day through September 30	5 fish bag, no gear restrictions
			October 1 through the Friday preceding Memorial Day	0 fish bag, artificial lures with barbless hooks
<del>(B) Shovel Creek and tributaries above mouth of Panther Creek.</del>	Last Saturday in Apr. through Nov. 15.	5		

Body of Water	Current Open Season and Special Regulations	Current Daily Bag and Possession Limit	Proposed Open Season	Proposed Daily Bag, Possession Limit, and Gear Restrictions
<del>(C) Shovel Creek and tributaries up to and including Panther Creek.</del>	<del>Closed to all fishing all year</del>			
(92) Klopp Lake (Humboldt Co.).	All year. Only artificial lures with barbless hooks may be used.	2	All year	0 fish bag, artificial lures with barbless hooks
(96) Lagunitas Lake (Marin Co.).	All year. Maximum size limit: 14 inches total length. Only artificial lures with barbless hooks may be used	2	All year	2 fish bag, artificial lures
(96.5) Lane Lake (Mono Co.).	Last Saturday in Apr. through Nov. 15.	2	All year	2 fish bag, artificial lures
<del>(98) Lassen Creek and tributaries (Modoc Co.)</del>	<del>Saturday preceding Memorial Day through Nov. 15. Only artificial lures with barbless hooks may be used.</del>	<del>0</del>		
(98.5) Laurel Lakes and tributaries (Mono Co.)	Last Saturday in Apr. through Nov. 15. Minimum size limit: 14 inches total length. Only artificial lures with barbless hooks may be used.	2	All year	2 fish bag, artificial lures, 14 inch minimum
(98.6) Lee Vining Creek from the Lee Vining conduit downstream to Mono Lake (Mono Co.)	Last Saturday in Apr. through Nov. 15.	2	Saturday preceding Memorial Day through September 30	2 fish bag, 4 fish possession limit, no gear restrictions
			October 1 through the Friday preceding Memorial Day	0 fish bag, artificial lures with barbless hooks

Body of Water	Current Open Season and Special Regulations	Current Daily Bag and Possession Limit	Proposed Open Season	Proposed Daily Bag, Possession Limit, and Gear Restrictions
(100) Little Butano Creek above the diversion dam at Butano State Park (San Mateo Co.).	Last Saturday in Apr. through Nov. 15	5 trout	Saturday preceding Memorial Day through September 30	0 fish bag, artificial lures with barbless hooks
(101) Little Cottonwood Creek and tributaries (Inyo Co.).	See Cottonwood Creek 7.50(b)(48).		All year	2 fish bag, artificial lures
(103.5) Little Truckee River (Sierra and Nevada <del>Co.</del> <u>cos.</u> ) from Stampede Reservoir Dam Downstream to Boca Reservoir.	Last Saturday in Apr. through Nov. 15. Maximum size limit: 14 inches total length. Only artificial lures with barbless hooks may be used.	2	All year	0 fish bag, artificial lures with barbless hooks
	Nov. 16 through the Friday preceding the last Saturday in Apr. Only artificial lures with barbless hooks may be used.	0		
(104.3) Los Angeles Aqueduct from Owens River to Alabama Gates (Inyo County).	First Saturday in Mar. through Nov. 15.	5 per day 10 in possession	Move to 7.0 statewide reg	
	Nov. 16 through the Friday preceding the first Saturday in Mar.	5		
NEW - Los Gatos Creek (Santa Clara Co.) upstream of Camden Avenue drop including Lexington Reservoir and all tributaries.			All year	0 fish bag, artificial lures with barbless hooks
NEW - Lundy Lake (Mono County)			Last Saturday in April through October 31	5 fish bag, no gear restrictions

Body of Water	Current Open Season and Special Regulations	Current Daily Bag and Possession Limit	Proposed Open Season	Proposed Daily Bag, Possession Limit, and Gear Restrictions
(107) Mad River and tributaries (Humboldt Co.).				
(E) Mad River and tributaries above Ruth Dam.	Last Saturday in May through Nov. 15.	5 per day 10 in possession	Move to 7.0 statewide reg	
NEW - Mamie Lake (Mono County)			Last Saturday in April through October 31	5 fish bag, no gear restrictions
(109) Mammoth Pool (Fresno and Madera cos.).	June 16 through Apr. 30.	5 per day 10 in possession	Saturday preceding Memorial Day through the last day in February	5 fish bag, no gear restrictions
(110) Mammoth Pool tributaries (Fresno and Madera Cos.) from their mouths to a point 300 feet upstream.	June 16 through Nov. 15.	5 per day 10 in possession	Saturday preceding Memorial Day through the last day in February	5 fish bag, no gear restrictions
(111) Martis Creek from the Martis Lake dam downstream to the confluence with the Truckee River (Nevada Co.)	Last Saturday in Apr. through Nov. 15. Minimum size limit: 14 inches total length. Only artificial lures with barbless hooks may be used.	2	All year	0 fish bag, artificial lures with barbless hooks
(112) Martis Lake and tributaries (Nevada and Placer Cos.)				
(A) Martis Lake.	Last Saturday in Apr. through Nov. 15. Only artificial lures with barbless hooks may be used.	0	Move to 7.0 statewide reg	
(B) Martis Lake tributaries.	Closed to all fishing all year.		All year	0 fish bag, artificial lures with barbless hooks



Body of Water	Current Open Season and Special Regulations	Current Daily Bag and Possession Limit	Proposed Open Season	Proposed Daily Bag, Possession Limit, and Gear Restrictions
NEW - Mary Lake (Mono County)			Last Saturday in April through October 31	5 fish bag, no gear restrictions
(115) McCloud River and tributaries (Shasta and Siskiyou cos.).				
<del>(B) McKay Creek and all tributaries including Sheepheaven Spring.</del>	Closed to all fishing all year.			
<del>(C) Edson Creek and all tributaries.</del>	Closed to all fishing all year.		Closed to all fishing all year	
(D) Swamp Creek and all tributaries.	Last Saturday in Apr. through Nov. 15. Only artificial lures with barbless hooks may be used.	0	Saturday preceding Memorial Day through the last day in February	0 fish bag, artificial lures with barbless hooks
NEW - Sheephaven Creek			Closed to all fishing all year	
NEW - Bull Creek and tributaries			Closed to all fishing all year	
NEW - Dry Creek south of upper McCloud River			Closed to all fishing all year	
(E) McCloud River from McCloud Dam downstream to confluence of Ladybug Creek.	Last Saturday in Apr. through Nov. 15. Only artificial lures with barbless hooks may be used.	2	Saturday preceding Memorial Day through September 30	2 fish bag, artificial lures
			October 1 through the Friday preceding Memorial Day	0 fish bag, artificial lures with barbless hooks

Body of Water	Current Open Season and Special Regulations	Current Daily Bag and Possession Limit	Proposed Open Season	Proposed Daily Bag, Possession Limit, and Gear Restrictions
(F) McCloud River from confluence of Ladybug Creek downstream to lower boundary of the U.S. Forest Service loop (southern boundary of section 36, T38N, R3W)- <u>Shasta Lake.</u>	Last Saturday in Apr. through Nov. 15. Only artificial lures with barbless hooks may be used.	0	All year	0 fish bag, artificial lures with barbless hooks
<del>(G) McCloud River from the lower boundary of the U.S. Forest Service loop (southern boundary of section 36, T38N, R3W) downstream to the upper boundary of the McCloud River Club (southern boundary of section 14, T37N, R3W).</del>	Closed to all fishing all year.			
(115.3) McGee Creek (Mono Co.).				
(A) McGee Creek downstream from Highway 395.	Last Saturday in April through Friday preceding Memorial Day and Oct. 1 through Nov. 15. Minimum size limit: 18 inches total length. Only artificial lures with barbless hooks may be used.	2	Saturday preceding Memorial Day through September 30	5 fish bag, no gear restrictions
	Saturday preceding Memorial Day through Sept. 30.	5 per day 10 in possession.		
(B) McGee Creek upstream from Highway 395.	Last Saturday in April through Nov. 15.	5 per day 10 in possession	Move to 7.0 statewide reg	
<del>(115.4) McKay Creek and all tributaries (Siskiyou Co.)</del>	<del>See McCloud River 7.50(b)(115).</del>			

<b>Body of Water</b>	<b>Current Open Season and Special Regulations</b>	<b>Current Daily Bag and Possession Limit</b>	<b>Proposed Open Season</b>	<b>Proposed Daily Bag, Possession Limit, and Gear Restrictions</b>
(115.6) McLeod Lake (Mono Co.).	Last Saturday in Apr. through Nov. 15. Only artificial lures with barbless hooks may be used.	0	All year	0 fish bag, artificial lures with barbless hooks
(115.8) Meiss Lake (Alpine Co.).	Closed to all fishing all year		Saturday preceding Memorial Day through September 30	0 fish bag, artificial lures with barbless hooks
(116) Mendocino Lake tributaries (Mendocino Co.).	Last Saturday in Apr. through Nov. 15	5	Move to 7.0 statewide reg	
(117) Merced River (Mariposa Co.).				
(A) From the Happy Isles footbridge downstream to the western boundary of Yosemite National Park at El Portal.	Last Saturday in Apr. through Nov. 15. Only artificial lures with barbless hooks may be used.	0 rainbow trout 5 brown per day 10 brown trout in possession	Move to 7.0 statewide reg	
(B) From the western boundary of Yosemite National Park at El Portal boundary downstream to the Foresta bridge.	All year. Only artificial lures with barbless hooks may be used.	0 rainbow trout 5 brown trout per day 10 brown trout in possession	Move to 7.0 statewide reg	
(C) From Foresta bridge downstream to Lake McClure.	Last Saturday in April through November 15. November 16 through the Friday preceding the last Saturday in April.	5 per day 10 in possession	Move to 7.0 statewide reg	
(118.5) Mill Creek (Mono Co. tributary to West Walker River) and tributaries upstream from confluence with Lost Cannon Creek.	Closed to all fishing all year.		All year	0 fish bag, artificial flies and barbless hooks

Body of Water	Current Open Season and Special Regulations	Current Daily Bag and Possession Limit	Proposed Open Season	Proposed Daily Bag, Possession Limit, and Gear Restrictions
(120) Milton Lake and Middle Fork Yuba River between Milton Lake and Jackson Meadows Dam (Nevada and Sierra cos.).	Last Saturday in Apr. through Nov. 15. Maximum size limit: 12 inches total length. Only artificial lures with barbless hooks may be used.	2	All year	0 fish bag, artificial lures with barbless hooks
(125) Mono Creek (Fresno Co.) and tributaries from Edison Lake upstream to the confluence with the North Fork Mono Creek.	June 1 through October 15.	5 per day 10 in possession	Saturday preceding Memorial Day through the last day in February	5 fish bag, no gear restrictions
<del>(125.5) Moosehead Creek and all tributaries (Shasta and Siskiyou cos.).</del>	<del>See McCloud River 7.50(b)(115)</del>			
(128) Nacimiento River (Monterey and San Luis Obispo cos.) from Nacimiento Reservoir.				
(A) From the headwaters in the Los Padres National Forest, downstream to the southern border of Fort Hunter-Liggett Military Reservation.	Last Saturday in Apr. through Nov. 15.	5	Saturday preceding Memorial Day through the last day in February	5 fish bag, no gear restrictions
(B) Nacimiento Lake, and the main stem Nacimiento River upstream to the southern boundary of Fort Hunter-Liggett.	All year.	5	Move to 7.0 statewide reg	
(130.5) Nelson Corral Reservoir and tributary (Lassen Co.).				
(A) Nelson Corral Reservoir.	All year.	2 trout	All year	2 fish bag, 4 fish possession limit, no gear restrictions

Body of Water	Current Open Season and Special Regulations	Current Daily Bag and Possession Limit	Proposed Open Season	Proposed Daily Bag, Possession Limit, and Gear Restrictions
(130.6) New Bullards Bar Reservoir	All year.	5 trout. 10 landlocked salmon per day. 20 landlocked salmon in possession.	Move to 7.0 statewide reg	
(132) Nicasio Lake tributaries (Marin Co.).	Last Saturday in Apr. through Nov. 15.	5	Saturday preceding Memorial Day through September 30	2 fish bag, 4 fish in possession, no gear restrictions
(134) Owens River (Inyo and Mono Cos.), including Pleasant Valley and Tinemaha lakes, except (A), (B), (C), <del>and (D) and (E) below.</del>	First Saturday in Mar. through Oct. 31.	5 per day 10 in possession	Move to 7.0 statewide reg	
	Nov. 1 through the Friday preceding the first Saturday in Mar.	5		
(A) Upper Owens River from Benton Bridge road crossing upstream to Big Springs. Above Big Springs, see Deadman Creek 7.50(b)(54.5).	Last Saturday in April through Nov. 15. Maximum size limit: 16 inches total length. Only artificial lures with barbless hooks may be used.	2	All year	0 fish bag, artificial flies and barbless hooks
	Nov. 16 through the Friday preceding the last Saturday in Apr. Only artificial lures with barbless hooks may be used.	0		

Body of Water	Current Open Season and Special Regulations	Current Daily Bag and Possession Limit	Proposed Open Season	Proposed Daily Bag, Possession Limit, and Gear Restrictions
<del>(B) Upper Owens River from Benton Bridge road crossing downstream to upper Owens River fishing monument.</del>	<del>Saturday preceding Memorial Day through Sep. 30.</del>	<del>5 per day 10 in possession.</del>		
<del>(C) Upper Owens River from fishing monument (located about 1/4 mile upstream from maximum lake level) to Crowley Lake.</del>	<del>Last Saturday in April through July 31.</del>	<del>5 per day 10 in possession.</del>		
	Aug. 1 through Nov. 15. Minimum size limit: 18 inches total length. Only artificial lures with barbless hooks may be used.	2		
(B) Upper Owens River from Benton Bridge road crossing to Crowley Lake.			Last Saturday in April through July 31	5 fish bag, no gear restrictions
			August 1 through October 31	2 fish bag, artificial lures, 18 inch minimum
<del>(D)</del> (C) From Pleasant Valley Dam downstream to footbridge at lower end of Pleasant Valley Campground.	Jan. 1 through Sept. 30.	2	All year	2 fish bag, artificial lures
	Oct. 1 through Dec. 31. Only artificial lures with barbless hooks may be used.	0		
<del>(E)</del> (D) From footbridge at lower end of Pleasant Valley Campground east (downstream) 3.3 miles along Chalk Bluffs Road to the redwood sport fishing regulations sign to 5 Bridges Road.	All year. Only artificial lures with barbless hooks may be used.	0	All year	0 fish bag, artificial lures with barbless hooks

Body of Water	Current Open Season and Special Regulations	Current Daily Bag and Possession Limit	Proposed Open Season	Proposed Daily Bag, Possession Limit, and Gear Restrictions
(135.4) Lake Pardee.	All year.	5 trout. 10 landlocked salmon per day. 20 landlocked salmon in possession.	Move to 7.0 statewide reg	
(135.5) Parker Creek (Mono Co.). <del>from the Lee Vining Conduit to Rush Creek.</del>	Last Saturday in Apr. through Nov. 15. Only artificial lures with barbless hooks may be used.	0	All year	0 fish bag, artificial lures with barbless hooks
(138) Pillsbury Lake tributaries (Lake Co.).	Last Saturday in Apr. through Nov. 15.	5	Move to 7.0 statewide reg	
<del>(139) Pine Creek and Pine Creek Slough (Lassen Co.) See Eagle Lake 7.50(b)(61).</del>	<del>Closed to all fishing all year.</del>			
<del>(A) Pine Creek Slough and Pine Creek below State Highway 44.</del>	<del>Closed to fishing all year</del>			
<del>(B) Pine Creek above State Highway 44.</del>	<del>Saturday preceding Memorial Day through Nov. 15.</del>	<del>5 per day 10 in possession</del>		
(139.5) Pine Creek (Goose Lake Tributary) and tributaries (Modoc Co.).	Saturday preceding Memorial Day through November 15. Only artificial lures with barbless hooks may be used.	0	Saturday preceding Memorial Day through the last day in February	5 fish bag, no gear restrictions
NEW - Pine Valley Creek (San Diego Co.) upstream of Barrett Lake, and all its tributaries.			All year	2 fish bag, artificial lures

Body of Water	Current Open Season and Special Regulations	Current Daily Bag and Possession Limit	Proposed Open Season	Proposed Daily Bag, Possession Limit, and Gear Restrictions
(141) Pit River (Shasta and Modoc cos.).				
(A) Pit River (Modoc County) from the Hwy 395 bridge/South Fork Pit River crossing near the town of Likely downstream to the Highway 299 (Canby) bridge/Pit River crossing.	All year.	0	Move to 7.0 statewide reg	
NEW - Pit River, South Fork (Modoc Co.) and tributaries upstream of the Highway 395 bridge in Likely.			Saturday preceding Memorial Day through the last day in February	5 fish bag, no gear restrictions
NEW - Pit River, North Fork (Modoc Co.) and tributaries from the confluence with the South Fork in Alturas upstream to (including) Franklin Creek.			Saturday preceding Memorial Day through the last day in February	2 fish bag, artificial lures
(B) From Pit No. 3 (Britton Dam) downstream to the outlet of the Pit No. 3 Powerhouse.	Last Saturday in Apr. through Nov. 15. Minimum size limit: 18 inches total length. Only artificial lures with barbless hooks may be used.	2	All year	0 fish bag, artificial lures with barbless hooks
	Nov. 16 through the Friday preceding the last Saturday in Apr. Only artificial lures with barbless hooks may be used.	0		



Body of Water	Current Open Season and Special Regulations	Current Daily Bag and Possession Limit	Proposed Open Season	Proposed Daily Bag, Possession Limit, and Gear Restrictions
(C) Pit River, from Pit No. 3 Powerhouse downstream to <del>Pit No. 7 dam</del> <u>Shasta Lake</u> .	Last Saturday in Apr. through Nov. 15.	5	All year	2 fish bag, 4 fish possession limit, no gear restrictions
	Nov. 16 through the Friday preceding the last Saturday in Apr. Only artificial lures with barbless hooks may be used.	0		
<del>(D) From Pit No. 7 dam downstream to Shasta Lake.</del>	<del>All year.</del>	<del>5</del>		
(144) Portuguese Creek, West Fork (Madera Co.) from headwaters downstream to confluence with the East Fork Portuguese Creek.	Last Saturday in Apr. through Nov. 15. Only artificial lures with barbless hooks may be used.	0	Saturday preceding Memorial Day through the last day in February	0 fish bag, artificial lures with barbless hooks
(145) Prosser Creek from the Prosser Reservoir dam downstream to the confluence with the Truckee River (Nevada Co.)	Last Saturday in Apr. through Nov. 15. Minimum size limit: 14 inches total length. Only artificial lures with barbless hooks may be used.	2	All year	2 fish bag, 4 fish possession limit, no gear restrictions
(146) Purisima Creek (San Mateo Co.).	Last Saturday in Apr. through Nov. 15	5 trout	Saturday preceding Memorial Day through September 30	0 fish bag, artificial lures with barbless hooks
(147) Putah Creek (Solano and Yolo cos.) <del>from</del> Solano Lake to Monticello Dam.	All year. Only artificial lures <del>and</del> <u>with</u> barbless hooks may be used.	0 trout		

<b>Body of Water</b>	<b>Current Open Season and Special Regulations</b>	<b>Current Daily Bag and Possession Limit</b>	<b>Proposed Open Season</b>	<b>Proposed Daily Bag, Possession Limit, and Gear Restrictions</b>
(150.5) Robinson Creek (Mono Co.).				
(A) From the U.S. Forest Service boundary downstream to Upper Twin Lake.	Last Saturday in April through Sept. 14.	5	Saturday preceding Memorial Day through September 30	5 fish bag, no gear restrictions
	Sept. 15 through Nov. 15. Only artificial lures with barbless hooks may be used.	0		
(B) Between Upper and Lower Twin Lakes.	Last Saturday in April through Sept. 14.	5	Saturday preceding Memorial Day through September 30	5 fish bag, no gear restrictions
<b>NEW - Rock Creek Lake (Mono Co.)</b>			Last Saturday in April through October 31	5 fish bag, no gear restrictions
(152.5) Roosevelt Lake (Mono Co.).	Last Saturday in Apr. through Nov. 15.	2	All year	2 fish bag, artificial lures
(153) Rush Creek (Mono Co.) only from Grant Lake Dam downstream to Mono Lake.	Last Saturday in Apr. through Nov. 15. Only artificial lures with barbless hooks may be used.	0	All year	0 fish bag, artificial lures with barbless hooks
<b>NEW - Rush Creek (Mono Co.) between Silver Lake and Grant Lake</b>			Saturday preceding Memorial Day through September 30	5 fish bag, no gear restrictions
<b>NEW - Russian River East Fork above Lake Mendocino and tributaries to Lake Mendocino (Mendocino Co.)</b>			Saturday preceding Memorial Day through the last day in February	5 trout
<b>NEW - Sabrina Lake (Inyo Co.)</b>			Last Saturday in April through October 31	5 fish bag, no gear restrictions

Body of Water	Current Open Season and Special Regulations	Current Daily Bag and Possession Limit	Proposed Open Season	Proposed Daily Bag, Possession Limit, and Gear Restrictions
(156) Sacramento River and tributaries above Keswick Dam (Shasta, and Siskiyou <del>Cascos.</del> ).	Also see Sierra District General Regulations (See Section 7.00(b)).			
(B) Sacramento River and tributaries <del>excluding Soda Creek</del> from Scarlett Way bridge downstream to the county bridge at Sweetbriar ( <del>See Soda Creek 7.50(b)(180.5)).</del>	Last Saturday in Apr. through Nov. 15.	5 per day 10 in possession	Saturday preceding Memorial Day through September 30	5 fish bag, no gear restrictions
			October 1 through the Friday preceding Memorial Day	2 fish bag, artificial lures
(C) Sacramento River <u>and tributaries</u> mainstem ( <del>excluding tributaries</del> ) from the Scarlett Way bridge downstream to the county bridge at Sweetbriar downstream to Shasta Lake.	Nov. 16 through the Friday preceding the last Saturday in Apr. Only artificial lures with barbless hooks may be used.	0	All year	2 fish bag, artificial lures
(D) Sacramento River and tributaries <del>excluding Castle Creek</del> from the county bridge at Sweetbriar downstream to Shasta Lake ( <del>See Castle Creek 7.50(b)(39.3)).</del>	Last Saturday in Apr. through Nov. 15. Only artificial lures with barbless hooks may be used.	2		
(E) Sacramento River mainstem ( <del>excluding all tributaries</del> ) from the county bridge at Sweetbriar downstream to Shasta Lake.	Nov. 16 through the Friday preceding the last Saturday in Apr. Only artificial lures with barbless hooks may be used.	0		
(157) Sagehen Creek (Nevada Co.).				
(B) From the Highway 89 bridge upstream to the gauging station at the east boundary of the Sagehen Creek Station.	Last Saturday in Apr. through Nov. 15 Only artificial lures with barbless hooks may be used.	0	All year	0 fish bag, artificial lures with barbless hooks

Body of Water	Current Open Season and Special Regulations	Current Daily Bag and Possession Limit	Proposed Open Season	Proposed Daily Bag, Possession Limit, and Gear Restrictions
(160) Salmon Creek and tributaries above Highway 1 (Monterey Co.).	Last Saturday in Apr. through Nov. 15.	5 trout	Saturday preceding Memorial Day through September 30	5 fish bag, no gear restrictions
NEW - San Luis Rey River West Fork (San Diego Co.)			All year	2 fish bag, artificial lures
(171.7) Santa Paula Creek and tributaries above the falls located 3 miles upstream from the Highway 150 bridge (Ventura Co.).	All year.	5	Move to 7.0 statewide reg	
(172.5) Santa Ynez River and tributaries upstream of Gibraltar Dam (Santa Barbara County).	All year.	2	All year	2 fish bag, 4 fish possession limit, no gear restrictions
(174.1) Scotts Flat Reservoir, upper	All year.	5 trout. 10 trout in possession. 10 landlocked salmon per day. 20 landlocked salmon in possession.	Move to 7.0 statewide reg	
(175) Shasta Lake (Shasta Co.).	All year.	5	Move to 7.0 statewide reg	
<del>(176.5) Sheepheaven Spring (Siskiyou Co.).</del>	<del>See McCloud River 7.50(b)(115).</del>			
<del>(177) Shovel Creek and tributaries (Siskiyou Co.).</del>	<del>See Klamath River 7.50(b)(91).</del>			

Body of Water	Current Open Season and Special Regulations	Current Daily Bag and Possession Limit	Proposed Open Season	Proposed Daily Bag, Possession Limit, and Gear Restrictions
(177.5) Silver Creek <del>between Sworinger Lake and Lost Lake</del> and all other tributaries to Sworinger Lake (Modoc and Lassen cos.).	Closed to all fishing all year.		Saturday preceding Memorial Day through the last day in February	2 fish bag, artificial lures
NEW - Silver Lake (Mono Co.)			Last Saturday in April through October 31	5 fish bag, no gear restrictions
(179) Slinkard Creek and tributaries (Mono Co.) upstream from a Department of Fish and <del>Game</del> Wildlife cable crossing located about 2.7 miles south of a point on Highway 89 two miles west of its junction with Highway 395 (the cable is located about 600 feet below a rock dam on Clinkard Creek within the south half of Section 21, T9N, R22E). rock gabbion barrier (38.606976°N, 119.567687°W). The barrier is located approximately 5-6 miles upstream from Hwy 89 and 395 junction.	Aug. 1 through Nov. 15. Only artificial flies with barbless hooks may be used.	0	All year	0 fish bag, artificial flies and barbless hooks
(180.5) Soda Creek (Shasta Co.)	Last Saturday in Apr. through Nov. 15. Only artificial lures with barbless hooks may be used.	0	Move to 7.0 statewide reg	
(181) Sonoma Creek and tributaries (Sonoma Co.). <del>Also see Section 8.00(b).</del>				
(A) Sonoma Creek and tributaries above the Sonoma Creek seasonal waterfall in Sugarloaf Ridge State Park (located 0.2 miles upstream of the west end of the Canyon Trail).	Last Saturday in Apr. through Nov. 15.	5	Saturday preceding Memorial Day through September 30	0 fish bag, artificial lures with barbless hooks

Body of Water	Current Open Season and Special Regulations	Current Daily Bag and Possession Limit	Proposed Open Season	Proposed Daily Bag, Possession Limit, and Gear Restrictions
(181.8) Sonoma Lake (Sonoma Co.).	All year	2	All year	2 fish bag, 4 fish in possession, no gear restrictions
(182) Sonoma Lake tributaries (Sonoma Co.).	Last Saturday in April through Apr. 15.	2	Saturday preceding Memorial Day through September 30	2 fish bag, artificial lures
(184) Soulajoule Lake tributaries (Marin Co.).	Last Saturday in Apr. through Nov. 15.	5	Saturday preceding Memorial Day through September 30	2 fish bag, 4 fish in possession, no gear restrictions
NEW - South Lake (Mono Co.)			Last Saturday in April through October 31	5 fish bag, no gear restrictions
(185) Squaw Valley Creek and tributaries (Shasta Co.) <del>only from the bridge crossing on U.S. Forest Service road (#39N21) located one-eighth mile upstream of the mouth of Cabin Creek (Northwest 1/4 of Section 14, T38N, R3W) downstream to and including Tom Dew Creek.</del>	Last Saturday in Apr. through Nov. 15.	2	All year	0 fish bag, artificial lures with barbless hooks
(187) Stanislaus River, Middle Fork (Tuolumne Co.).				
(A) From Beardsley Dam downstream to the U. S. Forest Service footbridge at Spring Gap.	Last Saturday in Apr. through Nov. 15. Only artificial lures with barbless hooks may be used.	2	All year	2 fish bag, artificial lures
(B) From the U.S. Forest Service footbridge at Spring Gap to New Melones Reservoir.	Last Saturday in Apr. through Nov. 15.	2	All year	2 fish bag, 4 fish in possession, no gear restrictions
NEW - Stevens Creek and all tributaries upstream of Stevens Creek Reservoir (Santa Clara Co.).			All year	0 fish bag, artificial lures with barbless hooks

Body of Water	Current Open Season and Special Regulations	Current Daily Bag and Possession Limit	Proposed Open Season	Proposed Daily Bag, Possession Limit, and Gear Restrictions
(189) Stony Creek, and tributaries (Colusa, Glenn and Lake Cos.).				
(A) From the headwaters downstream to the diversion dam west of Stonyford in the center of Section 35, T18N, R7W, except the portion of Stony Creek Middle Fork from Red Bridge upstream	Last Saturday in April through Nov. 15.	5 per day 10 in possession		
	Nov. 16 through the Friday preceding the last Saturday in April. Only artificial lures with barbless hooks may be used.	0		
(B) (189) Stony Creek Middle Fork from Red Bridge upstream (Colusa, Glenn and Lake cos).	Last Saturday in April through Nov. 15. Only artificial lures with barbless hooks may be used.	2	All year	0 fish bag, artificial lures with barbless hooks
	Nov. 16 through the Friday preceding the last Saturday in April. Only artificial lures with barbless hooks may be used.	0		
(189.5) Susan River (Lassen County) from the confluence of Willard Creek and the Susan River, downstream to the Bizz Johnson trail bridge located approx. 1/4 mi. downstream from the 3 mi. marker on the Bizz Johnson trail. Also, see Section 8.10 for special open season for youths participating in Youth Fishing Derby.	Last Saturday in April through November 15. Only artificial lures with barbless hooks may be used.	0	Saturday preceding Memorial Day through the last day in February	5 fish bag, no gear restrictions

Body of Water	Current Open Season and Special Regulations	Current Daily Bag and Possession Limit	Proposed Open Season	Proposed Daily Bag, Possession Limit, and Gear Restrictions
<del>(189.8) Swamp Creek and all tributaries (Siskiyou Co.)</del>	<del>See McCloud River 7.50(b)(115).</del>			
NEW - Sweetwater River (San Diego Co.) upstream of Sweetwater Reservoir, and all its tributaries.			All year	2 fish bag, artificial lures
<del>(191) Sworinger Lake tributaries (Modoc and Lassen Cos.) upstream to the first lake</del>	Closed to all fishing all year			
(192) Tahoe Lake and tributaries (Placer and El Dorado Cos.).				
(A) Tahoe Lake tributaries upstream to the first lake.	July 1 through Sept. 30.	5 per day 10 in possession	Saturday preceding Memorial Day through September 30	0 fish bag, artificial lures with barbless hooks
(B) Tahoe Lake except (192)(C) below.	All year.	5, but no more than 2 mackinaw trout	Move to 7.0 statewide reg	
(C) Tahoe Lake within 300 feet of the mouth of its tributaries.	July 1 through Sept. 30.	5, but no more than 2 mackinaw trout	Saturday preceding Memorial Day through September 30	0 fish bag, artificial lures with barbless hooks
(194) Topaz Lake (Mono Co.).	Jan. 1 through Sept. 30	5	Move to 7.0 statewide reg	



Body of Water	Current Open Season and Special Regulations	Current Daily Bag and Possession Limit	Proposed Open Season	Proposed Daily Bag, Possession Limit, and Gear Restrictions
(194.6) Trinity Reservoir	All year.	5 trout per day. 10 trout in possession. 10 landlocked salmon per day. 20 landlocked salmon in possession.	Move to 7.0 statewide reg	
(195.1) Trinity River above Trinity Dam Lake (Trinity County) from the confluence with Tangle Blue Creek (Hwy 3) downstream (south) to the mouth of Trinity Lake, approximately 13.8 miles	Last Saturday in April through November 15	5 per day, 10 in possession	Saturday preceding Memorial Day through September 30	5 fish bag, no gear restrictions
	November 16 through the Friday preceding the last Saturday in April. Only artificial lures with barbless hooks may be used.	0 trout	October 1 through the Friday preceding Memorial Day	0 fish bag, artificial lures with barbless hooks
(195.5) Trout Lake (Siskiyou County)	Only Wednesdays and weekends from the last Saturday in April through Sept. 30.	2	Move to 7.0 statewide reg	
(196) Truckee River (Nevada, Placer and Sierra <del>Cos.</del> <u>Cos.</u> ).				
(B) Truckee River from the confluence of Trout Creek downstream to the <del>Glenhire Bridge</del> <u>Glenhire Bridge to the mouth of Prosser Creek.</u>	Last Saturday in Apr. through Nov. 15. Minimum size limit: 14 inches total length. Only artificial lures with barbless hooks may be used.	2	All year	0 fish bag, artificial lures with barbless hooks

Body of Water	Current Open Season and Special Regulations	Current Daily Bag and Possession Limit	Proposed Open Season	Proposed Daily Bag, Possession Limit, and Gear Restrictions
	Nov. 16 through the Friday preceding the last Saturday in Apr. Only artificial lures with barbless hooks may be used.	0		
<del>(C) Truckee River from the Glenshire Bridge downstream to the mouth of Prosser Creek.</del>	<del>Last Saturday in Apr. through Nov. 15. Minimum size limit: 14 inches total length. Only artificial flies with barbless hooks may be used</del>	<del>2</del>		
	<del>Nov. 16 through the Friday preceding the last Saturday in Apr. Only artificial lures with barbless hooks may be used.</del>	<del>0</del>		
<del>(DC) Truckee River from the mouth of Prosser Creek downstream to the Nevada State Line.</del>	<del>Last Saturday in Apr. through Nov. 15. Minimum size limit: 14 inches total length. Only artificial lures with barbless hooks may be used.</del>	<del>2</del>	All year	2 fish bag, artificial lures
	Nov. 16 through the Friday preceding the last Saturday in Apr. Only artificial lures with barbless hooks may be used.	0		
(197) Tule River and tributaries (Tulare Co.).				

Body of Water	Current Open Season and Special Regulations	Current Daily Bag and Possession Limit	Proposed Open Season	Proposed Daily Bag, Possession Limit, and Gear Restrictions
(A) Tule River, North Fork (Tulare Co.), only in the North Fork Tule River and all its forks and tributaries above the confluence with Pine Creek (about 50 yards upstream from the Blue Ridge road bridge, about 12 1/4 miles north of Springville).	All year. Only artificial flies with barbless hooks may be used.	2	All year	2 fish bag, 4 fish in possession, no gear restrictions
(B) All remaining portions of the Tule River and tributaries.	All year.	5 per day 10 in possession.	Move to 7.0 statewide reg	
NEW - Twelvemile Creek (Modoc Co.)			Saturday preceding Memorial Day through the last day in February	0 fish bag, artificial lures with barbless hooks
NEW - Twin Lakes (Mammoth) (Mono Co.)			Last Saturday in April through October 31	5 fish bag, no gear restrictions
NEW - Twin Lakes, Upper and Lower (Bridgeport) (Mono Co.)			Last Saturday in April through October 31	5 fish bag, no gear restrictions
(198) Tuolumne River (Stanislaus and Tuolumne cos.)				
(A) From O'Shaughnessy Dam (Hetch Hetchy Reservoir) downstream to <del>Early Intake Dam</del> Clavey River Falls.	Last Saturday in April through Nov 15. Max size limit: 12 inches total length. Only artificial lures with barbless hooks may be used.	2	All year	2 fish bag, artificial lures
	November 16 through the Friday preceding the last Saturday in April. Only artificial lures with barbless hooks may be used.	0		

Body of Water	Current Open Season and Special Regulations	Current Daily Bag and Possession Limit	Proposed Open Season	Proposed Daily Bag, Possession Limit, and Gear Restrictions
<del>(B) From Early Intake Dam downstream to Lumsden Bridge.</del>	Last Saturday in April through Nov. 15	5		
	Nov. 16 through the Friday preceeding the last Saturday in April. Only artificial lures with barbless hooks may be used.	0		
<del>(C) From Lumsden Bridge downstream to Clavey River Falls.</del>	Last Saturday in April through Nov. 15. Maximum size limit: 12 inches total length. Only artificial lures with barbless hooks may be used.	2		
	Nov. 16 through the Friday preceeding the last Saturday in April. Only artificial lures with barbless hooks may be used.	0		
<del>(199.5) Upper Truckee River and tributaries upstream from confluence with Showers Creek (Alpine and El Dorado Cos.).</del>	July 1 through Sept. 30. Only artificial lures with barbless hooks may be used.	0	Saturday preceding Memorial Day through September 30	0 fish bag, artificial lures with barbless hooks
NEW - Virginia Lakes, Big and Little (Mono Co.)			Last Saturday in April through October 31	5 fish bag, no gear restrictions
<del>(204.5) Walker Creek (Mono Co.) from the Lee Vining Conduit to Rush Creek.</del>	Last Saturday in April through Nov. 15. Only artificial lures with barbless hooks may be used.	0	All year	0 fish bag, artificial lures with barbless hooks

Body of Water	Current Open Season and Special Regulations	Current Daily Bag and Possession Limit	Proposed Open Season	Proposed Daily Bag, Possession Limit, and Gear Restrictions
(205) Walker River, East Fork (Mono County) From Bridgeport Dam to Nevada State Line.	Last Saturday in Apr. through Nov. 15. Minimum size limit: 18 inches total length. Only artificial lures with barbless hooks may be used. NOTE: BOW AND ARROW FISHING FOR CARP ONLY IS PERMITTED.	1	Saturday preceding Memorial Day through September 30	2 fish bag, artificial lures, 18 inch minimum
	Nov. 16 through the Friday preceding the last Saturday in Apr. Only artificial lures with barbless hooks may be used. NOTE: BOW AND ARROW FISHING FOR CARP ONLY IS PERMITTED.	0	October 1 through the Friday preceding Memorial Day	0 fish bag, artificial lures with barbless hooks
(205.5) West Walker River (Mono County) from the confluence with the Little Walker River (Hwy. 395 bridge at mile marker 96) downstream (north) to the inlet of Topaz Lake.	November 16 through the Friday preceding the last Saturday in April. Only artificial lures with barbless hooks may be used.	0 trout	Move to 7.0 statewide reg	
(206.5) Whiskey Creek (Mono Co.)				
(A) Whiskey Creek downstream from Crowley Lake Drive (old Highway 395).	Last Saturday in April through the Friday preceding Memorial Day and Oct. 1 through Nov. 15. Minimum size limit: 18 inches total length. Only artificial lures with barbless hooks may be used.	2	Saturday preceding Memorial Day through September 30	5 fish bag, no gear restrictions

Body of Water	Current Open Season and Special Regulations	Current Daily Bag and Possession Limit	Proposed Open Season	Proposed Daily Bag, Possession Limit, and Gear Restrictions
	Saturday preceding Memorial Day through Sept. 30.	5 per day 10 in possession.		
(B) Whiskey Creek upstream from Crowley Lake Drive.	Last Saturday in April through Nov. 15.	5 per day 10 in possession.	Move to 7.0 statewide reg	
<del>(208) Willow Creek and tributaries (tributary to Goose Lake, Modoc Co.).</del>	<del>Saturday preceding Memorial Day through Nov. 15. Only artificial lures with barbless hooks may be used.</del>	0		
(208.5) Wolf Creek and tributaries (tributary to West Walker River) (Mono Co.).	August 1 through November 15. Only artificial flies with barbless hooks may be used.	0	All year	0 fish bag, artificial lures with barbless hooks
(209) Yellow Creek (Plumas Co.) from Big Springs downstream to the marker at the lower end of Humbug Meadow.	Last Saturday in Apr. through Nov. 15 Maximum size limit: 10 inches total length. Only artificial lures with barbless hooks may be used.	2	Saturday preceding Memorial Day through the last day in February	0 fish bag, artificial lures with barbless hooks
(210) Yuba River, Middle Fork (Nevada and Sierra Cos.) from Jackson Meadows Dam downstream to Milton Lake.	See Milton Lake 7.50(b)(120).			
(211) Yuba River, North Fork (Sierra and Yuba Cos.)				
(A) From the western boundary of Sierra City to the confluence with Ladies Canyon Creek.	Last Saturday in Apr. through Nov. 15 Only artificial lures with barbless hooks may be used.	2	All year	2 fish bag, artificial lures

Body of Water	Current Open Season and Special Regulations	Current Daily Bag and Possession Limit	Proposed Open Season	Proposed Daily Bag, Possession Limit, and Gear Restrictions
	Nov. 16 through the Friday preceding the last Saturday in Apr. Only artificial lures with barbless hooks may be used.	0		
(B) From Ladies Canyon Creek downstream to New Bullards Bar Reservoir.	Last Saturday in Apr. through Nov. 15.	5	Move to 7.0 statewide reg	
	Nov. 16 through the Friday preceding the last Saturday in Apr. Only artificial lures with barbless hooks may be used.	0		

# Sport Fishing Regulations Revision and Simplification Project



Photo by Mike Mamola

Wildlife Resources Committee Meeting  
January 16, 2020  
Karen Mitchell  
Fisheries Branch





# Problem

- Too many special fishing regulations
- Some regulations are too complex
- District boundaries are confusing
- Many regulations are not geared towards management objectives

# Goals Through Revision

- Maintain or increase angling opportunity
- Improve regulatory consistency across waters
- Align sport fishing regulations with the Department's current fisheries management goals and objectives
- Reduce complexity and confusion
- Protect the fishery resources

# Approach

- Reduce/justify number of seasons, gear restrictions, and size limits
- Evaluate and revise trout regulations based on current management goals and objectives
- Eliminate the District regulations
- Create a statewide regulation for trout
- Separate inland waters from anadromous waters and create two booklets

# Public Outreach

- Townhalls/online surveys (2018 and 2019)
- Press release
- Social Media
- Released draft regulatory changes
- Created Interactive Webpage
- Mono County Board of Supervisors meeting

# Revisions

- Regional staff revised proposed regulations based on public input (e.g., social, economic, and safety concerns)
- Added more bins to the Trout Menu
  - Traditional trout opener (last Saturday in April)
  - Artificial lures, flies only
- Updated black bass special regulations to align with new trout regulations

# Regulation Changes: Examples

Body of Water	Current Open Season and Special Regulations	Current Daily Bag and Possession Limit	Proposed Open Season	Proposed Daily Bag, Possession Limit, and Gear Restrictions
Lower Owens River	<u>District Reg</u> Last Saturday in April to November 15	5 per day 10 in possession	Move to 7.0 statewide regulation	
Convict Lake	<u>District Reg</u> Last Saturday in April to November 15	5 per day 10 in possession	Last Saturday through October 31	5 fish bag, no gear restrictions
(150.5) Robinson Creek (Mono Co.).				
(A) From the U.S. Forest Service boundary downstream to Upper Twin Lake.	Last Saturday in April through Sept. 14	5	Saturday preceding Memorial Day through September 30	5 fish bag, no gear restrictions
	Sept. 15 through Nov. 15. Only artificial lures with barbless hooks may be used.	0	October 1 through the Friday preceding Memorial Day	0
(B) Between Upper and Lower Twin Lakes.	Last Saturday in April through Sept. 14.	5	Saturday preceding Memorial Day through September 30	5 fish bag, no gear restrictions
			October 1 through the Friday preceding Memorial Day	0
(78) Hot Creek (Mono Co.). Hot Creek from the State hatchery property line to the confluence with the Owens River.	All year. Only artificial flies with barbless hooks may be used.	0	All year.	0 fish bag, artificial flies and barbless hooks

# Summary of Changes

- Removed the Districts for trout waters
- Reduce seasons from **33 to 9**
- Reduce size limits from 8 to 2
- Reduce the special regulations by 25%
- Expand angling opportunities for 48% of existing special regulated waters
- Aligned current regulations with management

# Next Steps/Timeline

- March – Special WRC meeting; present proposed regulation changes
- June – Commission meeting; request to go to Notice; begin public comment period
- August – Commission meeting; discuss proposed changes; CEQA document due
- October – Commission meeting; Adopt proposed regulations
- March 1, 2021 - regulations go into effect



# Questions / Thank You



**Wildlife Resources Committee (WRC) 2019-20 Work Plan  
Scheduled Topics and Timeline for  
Items Referred to WRC by the California Fish and Game Commission  
Updated January 7, 2020**

Topic	Category	Sep 2019 Santa Rosa	Jan 2020 Long Beach	Mar 2020* Sacramento	May 2020 Santa Rosa
<b>Annual Regulations</b>					
Upland (Resident) Game Birds	Annual	X			
Sport Fishing	Annual				
Mammal Hunting	Annual	X/R			X
Waterfowl	Annual	X/R			X
Central Valley Salmon Sport Fishing	Annual	X/R			X
Klamath River Basin Sport Fishing	Annual	X/R			X
<b>Regulations &amp; Legislative Mandates</b>					
Falconry	Referral for Review				
Simplification of Statewide Inland Fishing Regulations	Regulatory	X	X	X/R	
<b>Special Projects</b>					
American Bullfrog and Non-native Turtle Stakeholder Engagement Project	WRC project	X	X		X

\* Note: The March 2020 meeting is an additional meeting that was added by FGC.

**KEY: X Discussion scheduled X/R Recommendation developed and moved to FGC**

# California Fish and Game Commission: Perpetual Timetable for Anticipated Regulatory Actions

Updated Thursday, January 9, 2020

Regulatory Change Category	Title 14 Section(s)	WRC Long Beach Jan 16, 2020	TC Los Alamitos Jan 17, 2020	FGC Sacramento Feb 20, 2020	FGC Sacramento Feb 21, 2020	WRC Sacramento Mar 5, 2020	MRC Santa Rosa Mar 17, 2020	FGC Sacramento Apr 15, 2020	FGC Sacramento Apr 16, 2020	Teleconference May 14, 2020	WRC Santa Rosa May 14, 2020	FGC Santa Ana Area Jun 24, 2020	FGC Santa Ana Area Jun 25, 2020	MRC San Clemente Area Jul 21, 2020	TC Fortuna Area Aug 18, 2020	FGC Fortuna Area Aug 19, 2020	FGC Fortuna Area Aug 20, 2020	WRC Sacramento Sep 17, 2020	FGC Oakland Oct 14, 2020	FGC Oakland Oct 15, 2020	TC Monterey Area Nov 9, 2020	MRC Monterey Area Nov 10, 2020
Recreational and Commercial Pacific Herring (Fishery Management Plan Implementation)	26.50, 28.50, 28.60, 28.62, 55.00, 55.01, 55.02, 163, 163.1, 163.5, 164 and 705			E 2/1																		
Experimental Fishing Permit (EFP) Program (Phase I)	90 and 704	E 1/1																				
Possession of Nongame Animals (Nutria)	473							E 4/1														
Klamath River Basin 2084 (Emergency) (First 90-day Extension)	7.50(b)(91.2)	E 12/24 through 3/22					EE 3/24															
Klamath River Basin 2084 (Emergency) (Second 90-day Extension)	7.50(b)(91.2)				A		E 3/24 through 6/20				EE 6/22											
Klamath River Basin 2084 (Implementing Certificate of Compliance)	7.50(b)(91.2)				D			A			E 6/22											
Wildlife Areas/Public Lands and Ecological Reserves <sup>1</sup>	550, 550.5, 551, 552, 630 and 702				D			A					E 7/1									
Mammal Hunting	360, 361, 362, 363, 364 and 364.1				D			A					E 7/1									
Waterfowl (Annual)	502, 507				D			A					E 7/1									
Central Valley Sport Fishing (Annual)	2.35, 7.00, 7.50(b)(5), (68), (124), (156.5)				D			A					E 7/16									
Klamath River Basin Sport Fishing (Annual) <sup>2</sup>	5.87(f), 7.50(b)(91.1)				D			A					E 8/15									
Commercial Pacific Herring (Fishery Management Plan Implementation) Eggs on Kelp	163, 164							N			D/A							E 10/1				
Recreational Dungeness Crab Marine Life Protection Measures	1.74, 29.80, 29.85, 29.91			V				N			D				A							
Commercial Kelp and Algae Harvest Management	165, 165.5, 704										N				A			E 10/1				
Simplification of Statewide Inland Fishing Regulations <sup>3</sup>	5.00, 7.00, 7.50, 8.10	V	V			R						N					D			A		

Rulemaking Schedule to be Determined	Title 14 Section(s)	WRC Long Beach Jan 16, 2020	TC Los Alamitos Jan 17, 2020	FGC Sacramento Feb 20, 2020	FGC Sacramento Feb 21, 2020	WRC Sacramento Mar 5, 2020	MRC Santa Rosa Mar 17, 2020	FGC Sacramento Apr 15, 2020	FGC Sacramento Apr 16, 2020	Teleconference May 14, 2020	WRC Santa Rosa May 14, 2020	FGC Santa Ana Area Jun 24, 2020	FGC Santa Ana Area Jun 25, 2020	MRC San Clemente Area Jul 21, 2020	TC Fortuna Area Aug 18, 2020	FGC Fortuna Area Aug 19, 2020	FGC Fortuna Area Aug 20, 2020	WRC Sacramento Sep 17, 2020	FGC Oakland Oct 14, 2020	FGC Oakland Oct 15, 2020	TC Monterey Area Nov 9, 2020	MRC Monterey Area Nov 10, 2020	
Santa Cruz Harbor Salmon Fishing (FGC Petition #2016-018)	TBD																						
European Green Crab (FGC Petition #2017-006)	TBD																						
Wildlife Areas/Public Lands <sup>4</sup>	TBD																						
Experimental Fishing Permit (EFP) Program (Phase II)	TBD						V																
Possess Game / Process Into Food	TBD																						
American Zoological Association / Zoo and Aquarium Association	671.1																						
Night Hunting in Gray Wolf Range (FGC Petition #2015-010)	474																						
Shellfish Aquaculture Best Management Practices	TBD																						
Ban of Neonicotinoid Pesticides on Department Lands (FGC Petition #2017-008)	TBD																						
Commercial Pink Shrimp Trawl	120, 120.1, 120.2																						
Ridgeback Prawn Incidental Take Allowance	120(e)																						

**KEY**  
 FGC = Fish and Game Commission MRC = Marine Resources Committee WRC = Wildlife Resources Committee TC = Tribal Committee  
 EM = Emergency EE = Emergency Expires E = Anticipated Effective Date (RED "X" = expedited OAL review)  
 N = Notice Hearing D = Discussion Hearing A = Adoption Hearing  
 V = Vetting R = Committee Recommendation  
 1 = FGC Petition #2018-005 2 = Includes FGC Petition 2019-020 3 = Includes FGC Petition #2018-008 4 = Includes FGC Petition #2018-003