

Wildlife Conservation Board Meeting

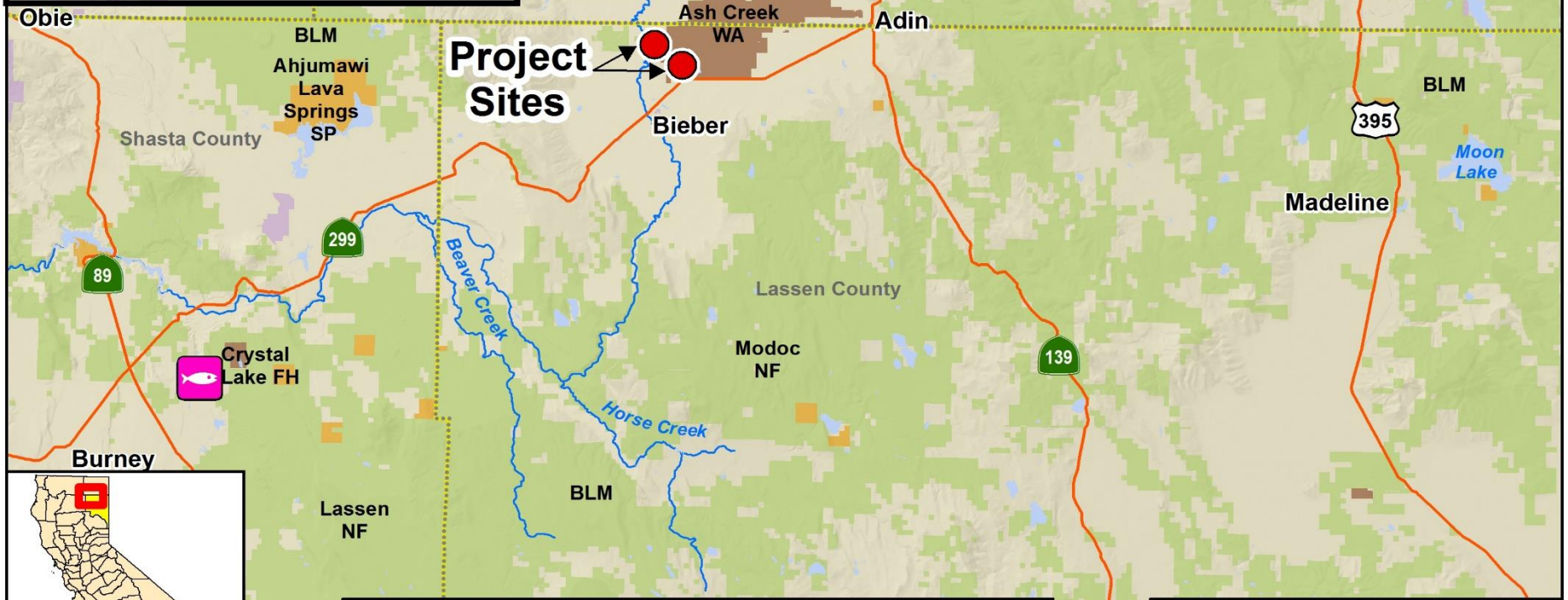
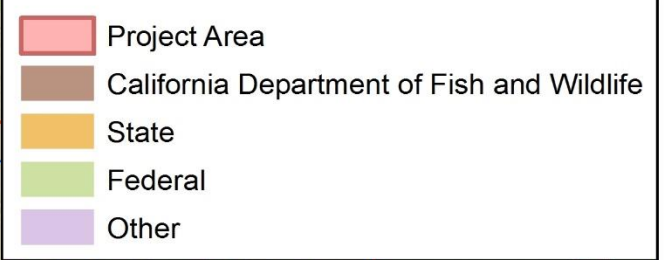
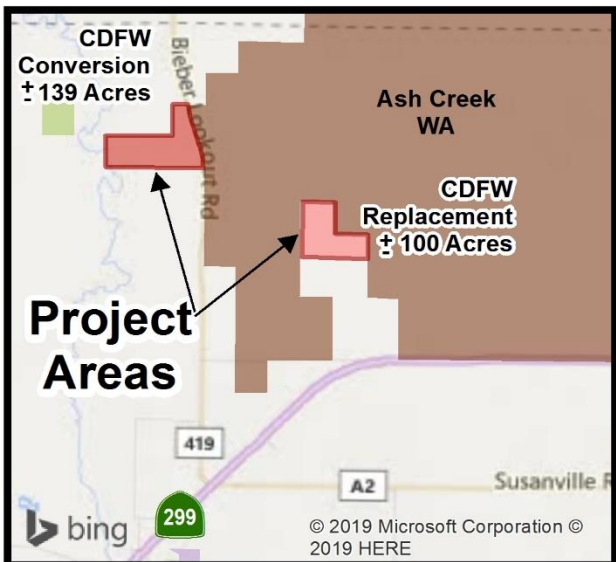
August 28, 2019, 10:00am

Natural Resources Building,

First Floor Auditorium

1416 9th Street, Sacramento, California 95814





**Ash Creek Wildlife Area Land Exchange
Lassen County**

#8. Ash Creek Wildlife Area Land Exchange



View of CDFW property to be exchanged

#8. Ash Creek Wildlife Area Land Exchange



Balance of CDFW property to be exchanged

#8. Ash Creek Wildlife Area Land Exchange



Access to CDFW exchange property

#8. Ash Creek Wildlife Area Land Exchange



Pronghorn Antelope on ACWA

#8. Ash Creek Wildlife Area Land Exchange



Gerig property to be exchanged

#8. Ash Creek Wildlife Area Land Exchange

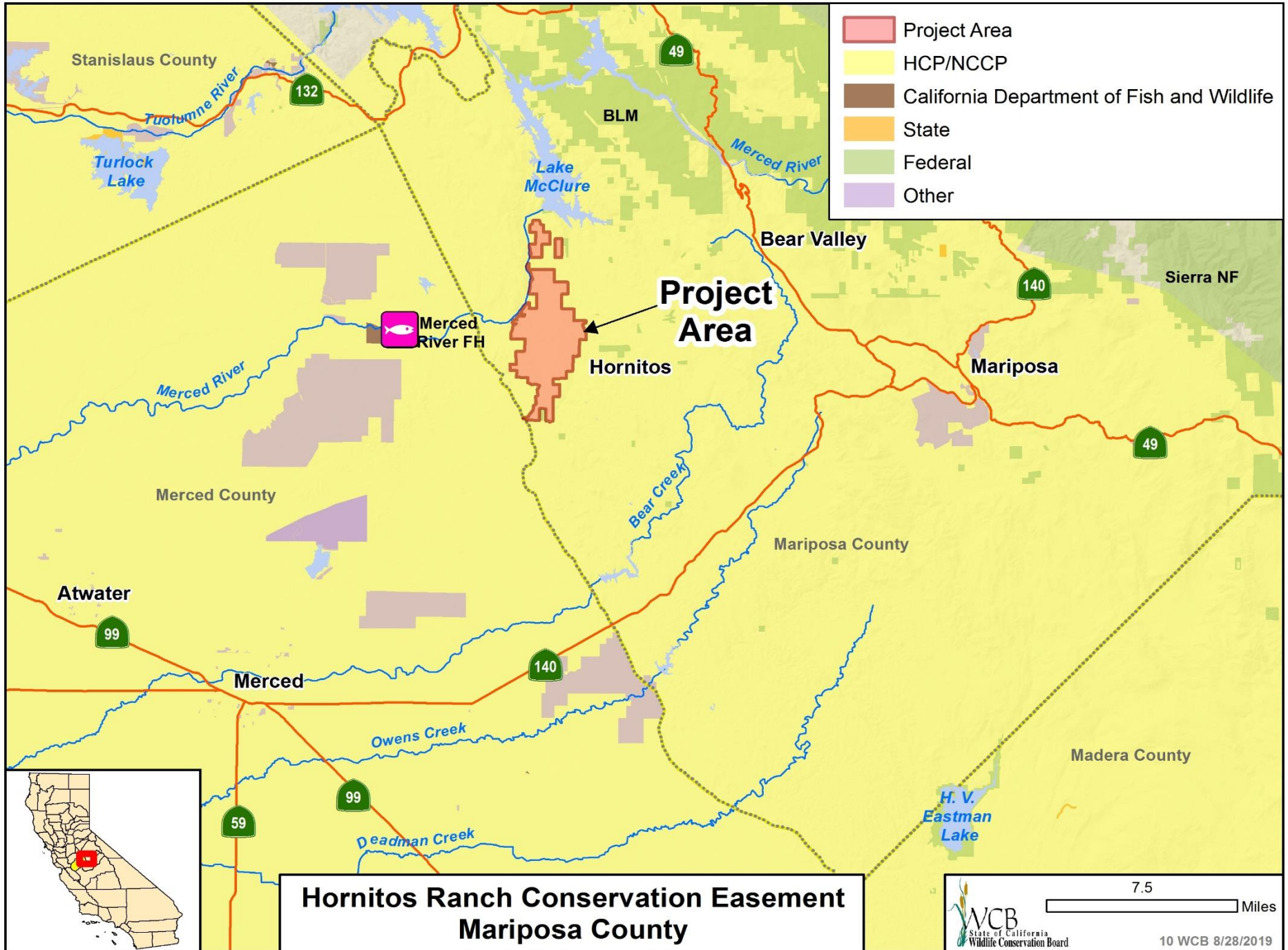


Gerig property to be exchanged

#8. Ash Creek Wildlife Area Land Exchange



Sandhill Crane on
ACWA



**Hornitos Ranch Conservation Easement
Mariposa County**

#10. Hornitos Ranch



Typical Hornitos Ranch oak woodland, grasslands and wetlands associated with California Tiger Salamander habitat.

#10. Hornitos Ranch



North side of Hornitos Ranch looking towards the distant Lake McClure.

#10. Hornitos Ranch



Cattle on the Hornitos Ranch

#10. Hornitos Ranch



The Hornitos Ranch is home to many ephemeral streams flowing into the Merced River.

#10. Hornitos Ranch



The Hornitos Ranch looking across Lake McSwain from Recreational Area. Typical Oak and grasslands Habitat found on the ranch.



#11. Planning for Predicted Sea Level Rise Within the Salinas Valley



Current condition of Old Salinas River – reduced to a drainage ditch.

#11. Planning for Predicted Sea Level Rise Within the Salinas Valley



Old Salinas River, adjacent to farmlands vulnerable to flooding

#11. Planning for Predicted Sea Level Rise Within the Salinas Valley

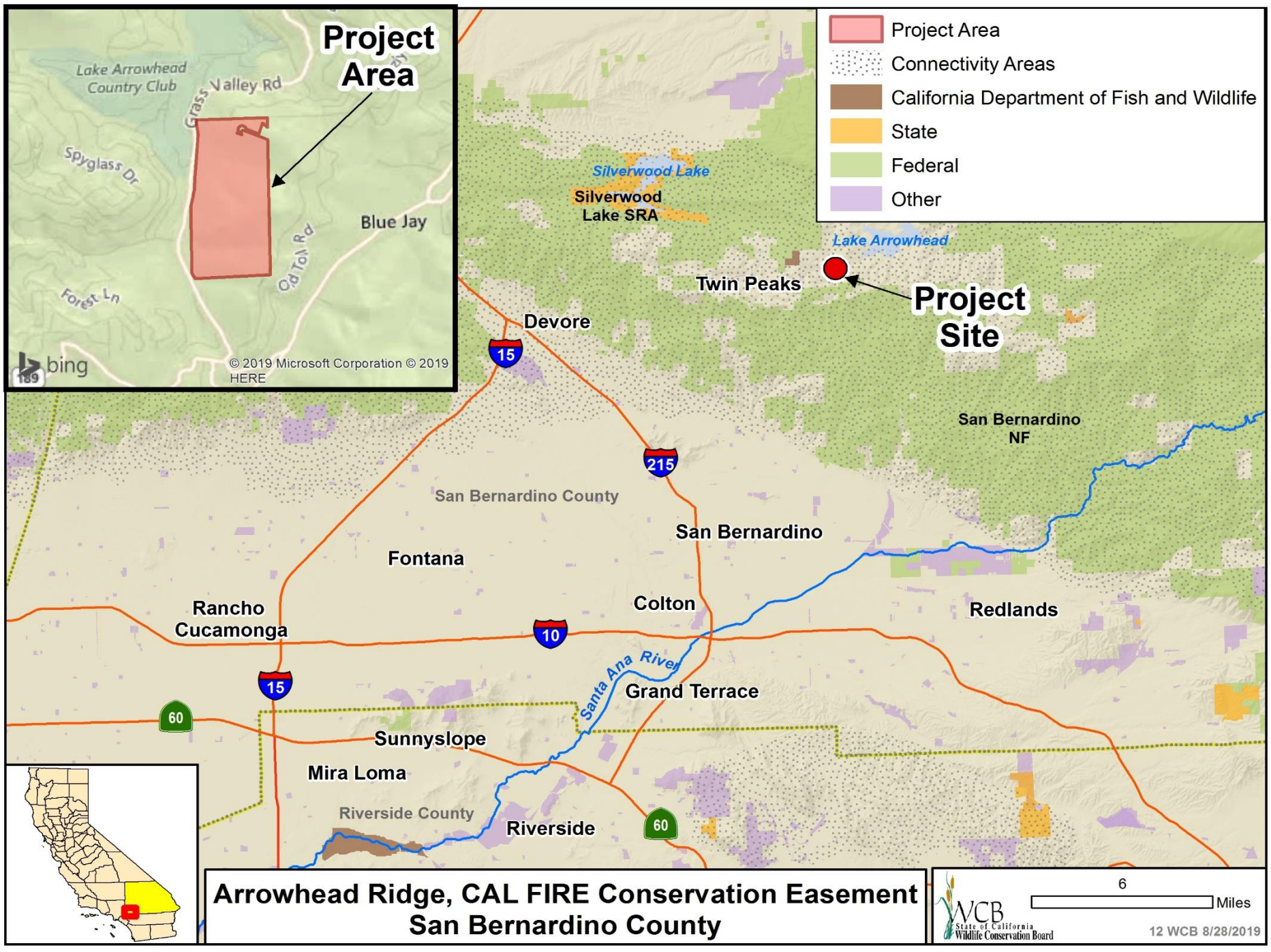


Concept design – integrating habitat and managed retreat into agriculture drainage areas

#11. Planning for Predicted Sea Level Rise Within the Salinas Valley



Location of participating landowner properties within flood hazard zone.



Project Area

- Project Area
- Connectivity Areas
- California Department of Fish and Wildlife
- State
- Federal
- Other

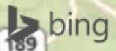
Project Site

**Arrowhead Ridge, CAL FIRE Conservation Easement
San Bernardino County**

6 Miles

WCB
State of California
Wildlife Conservation Board

12 WCB 8/28/2019



© 2019 Microsoft Corporation © 2019 HERE

#12. Arrowhead Ridge, CAL FIRE Conservation Easement



View of abandoned
roadway accessing
interior of property.

#12. Arrowhead Ridge, CAL FIRE Conservation Easement



Erosion from initial development

#12. Arrowhead Ridge, CAL FIRE Conservation Easement



Entrance road to
property

#12. Arrowhead Ridge, CAL FIRE Conservation Easement



Large retaining wall
installed during
development
repurposed as a
“Donor Wall”

#12. Arrowhead Ridge, CAL FIRE Conservation Easement

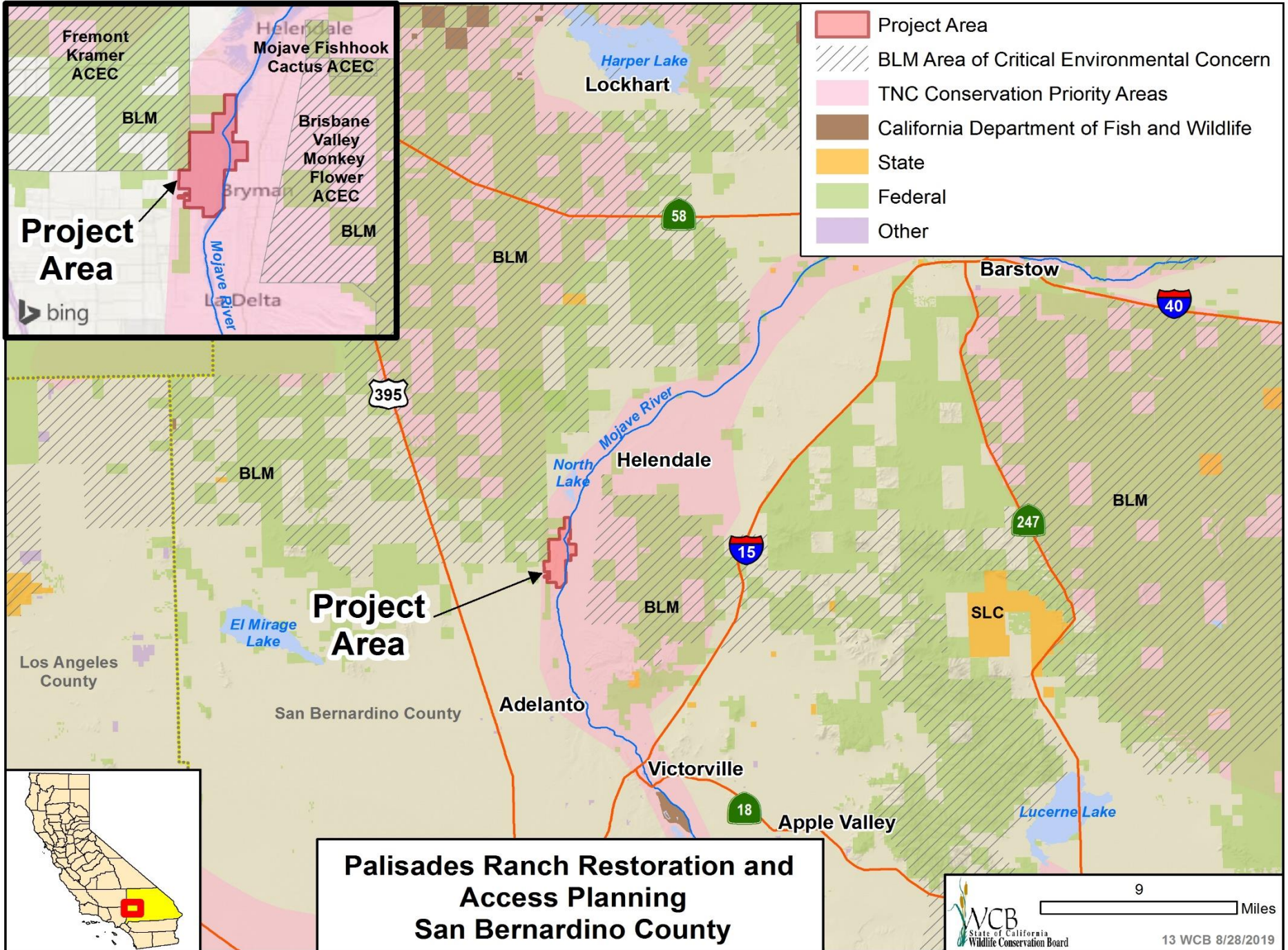


“Donor Wall”

#12. Arrowhead Ridge, CAL FIRE Conservation Easement



Forested upper portion
of the property



- Project Area
- BLM Area of Critical Environmental Concern
- TNC Conservation Priority Areas
- California Department of Fish and Wildlife
- State
- Federal
- Other

Project Area

bing

Project Area

Los Angeles County

San Bernardino County



**Palisades Ranch Restoration and Access Planning
San Bernardino County**

9 Miles

13 WCB 8/28/2019

#13. Palisades Ranch Restoration and Access Planning



Looking NE from top of palisades at 200 acres of fallow agricultural fields with riparian corridor in background.

#13. Palisades Ranch Restoration and Access Planning



Looking E-SE from palisades with fallow fields on the left, infrastructure in the foreground, and the riparian corridor beyond

#13. Palisades Ranch Restoration and Access Planning



Looking west from access road at Palisades

#13. Palisades Ranch Restoration and Access Planning

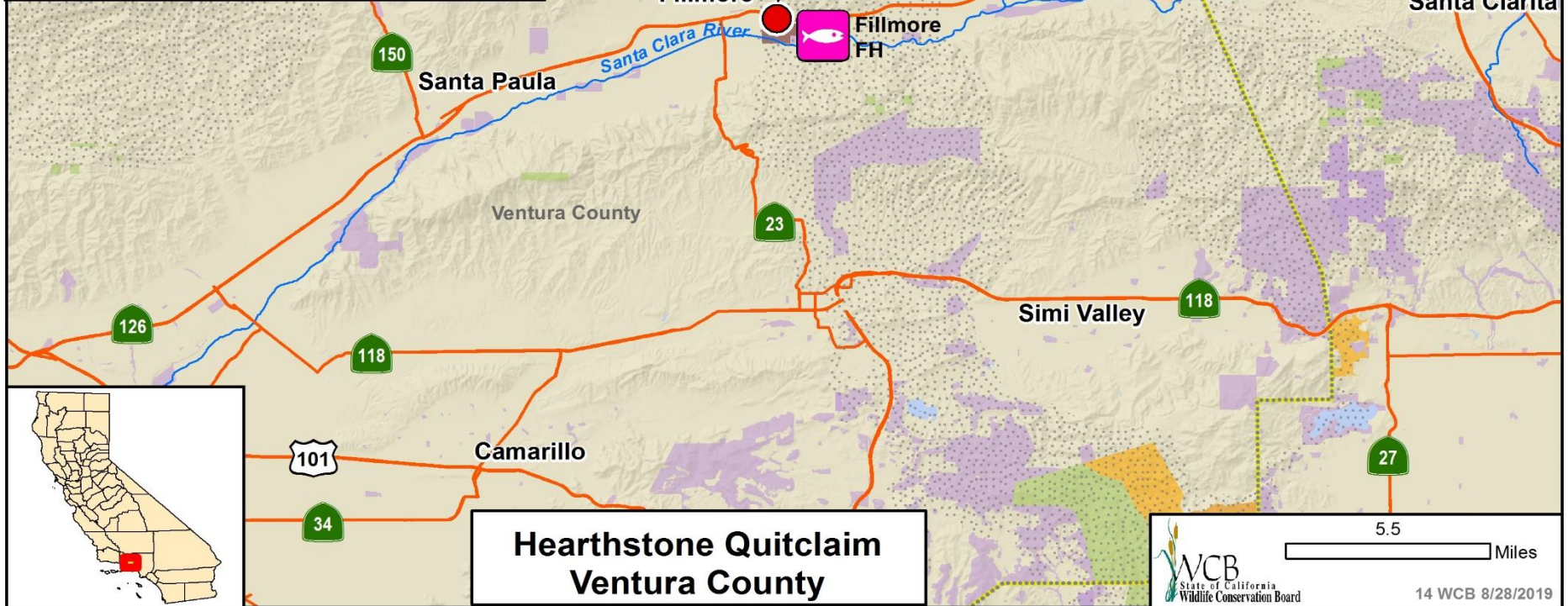
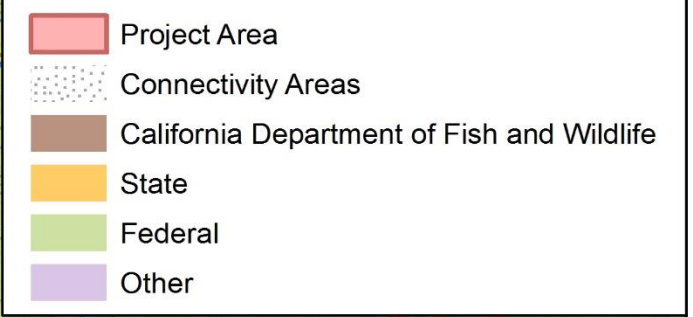


Open water channel within riparian corridor

#13. Palisades Ranch Restoration and Access Planning



Wetland within the braided stream corridor

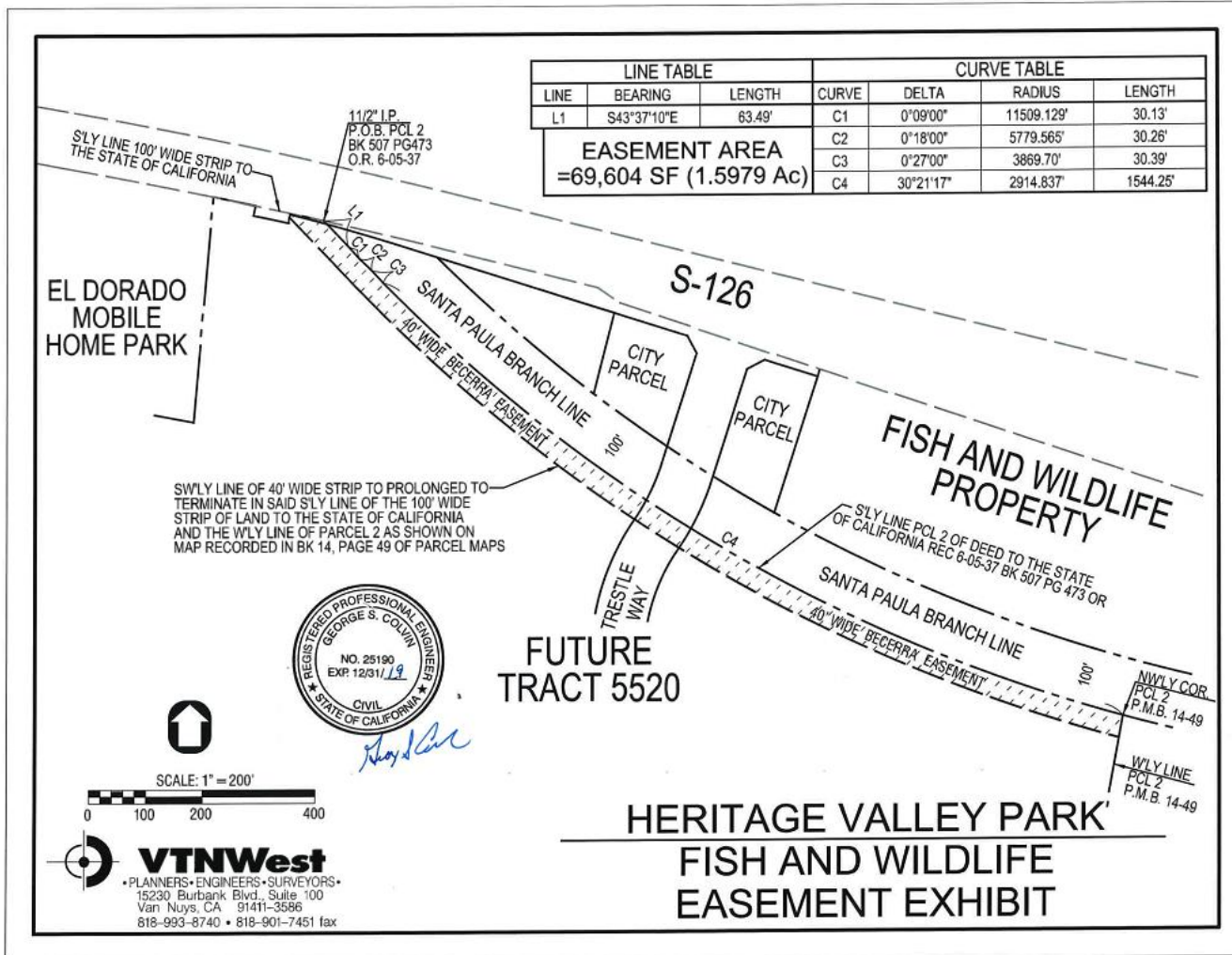


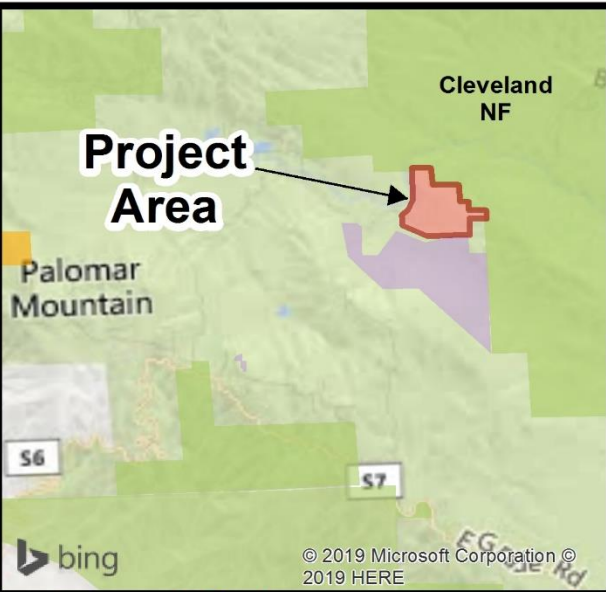
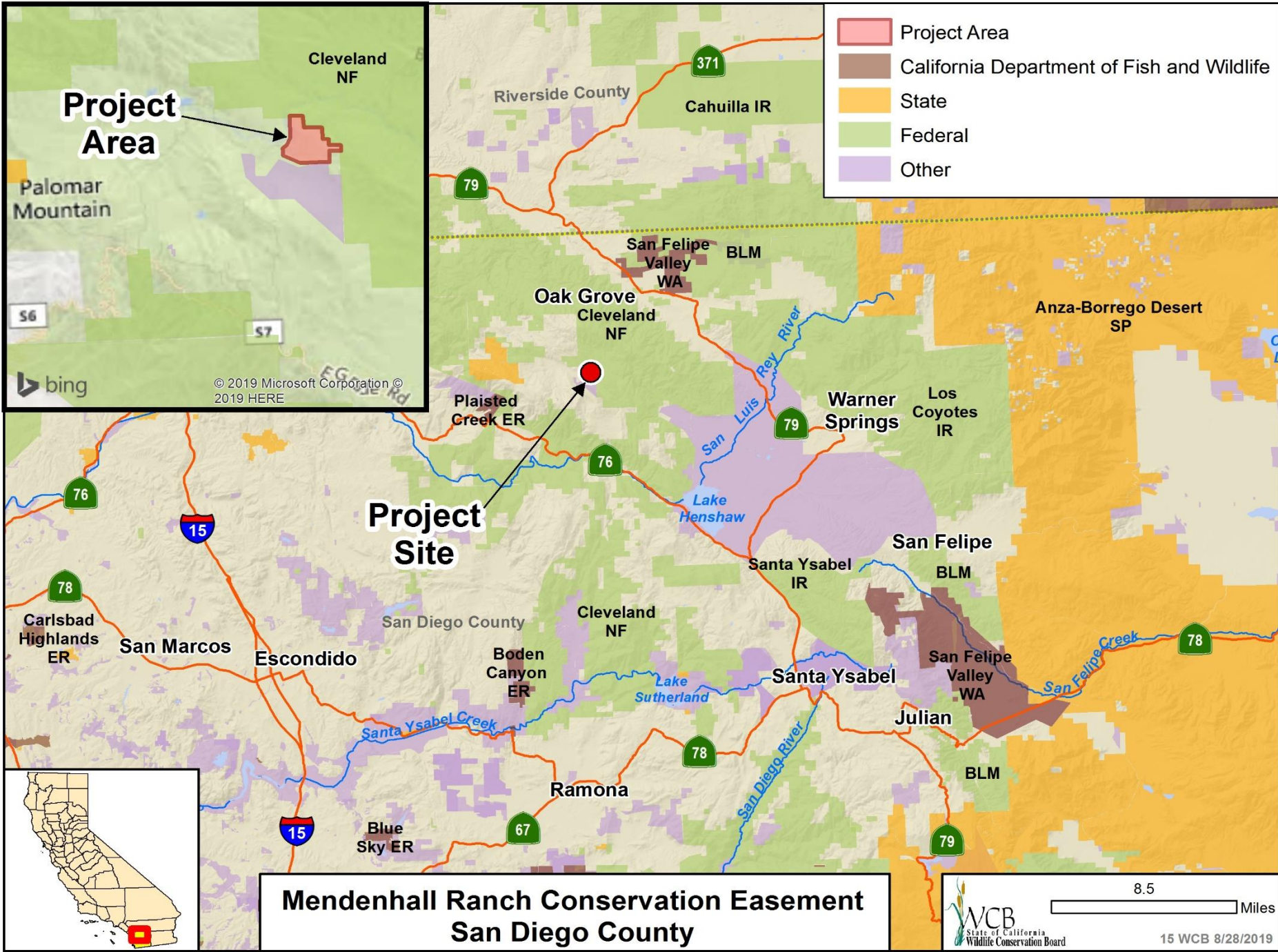
#14. Hearthstone Quitclaim



Easterly view of quitclaim area to the right of the rail

#14. Hearthstone Quitclaim





#15. Mendenhall Ranch Conservation Easement



Southerly view of property.

#15. Mendenhall Ranch Conservation Easement



Easterly view of the property.

#15. Mendenhall Ranch Conservation Easement



Westerly view of the property.

#15. Mendenhall Ranch Conservation Easement



Northerly view of the property.

MONARCH BUTTERFLY AND POLLINATOR RESCUE PROGRAM



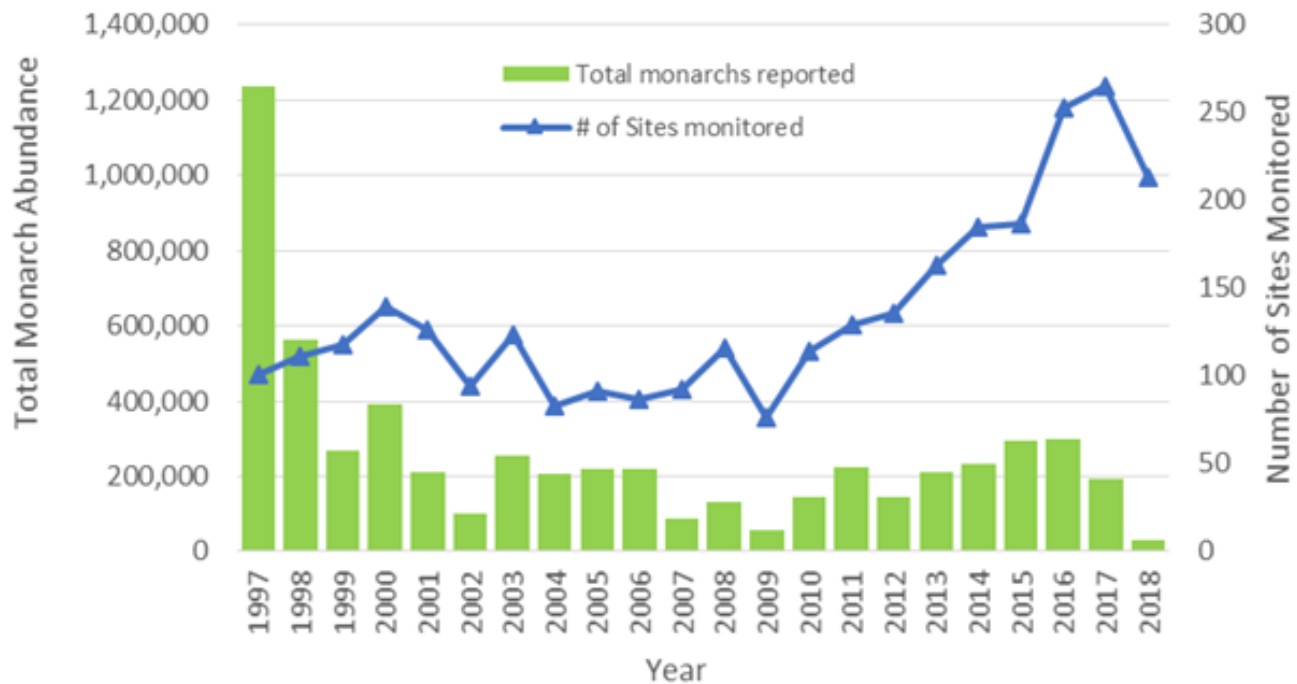
Monarch Butterfly,
Danaus plexippus
plexippus

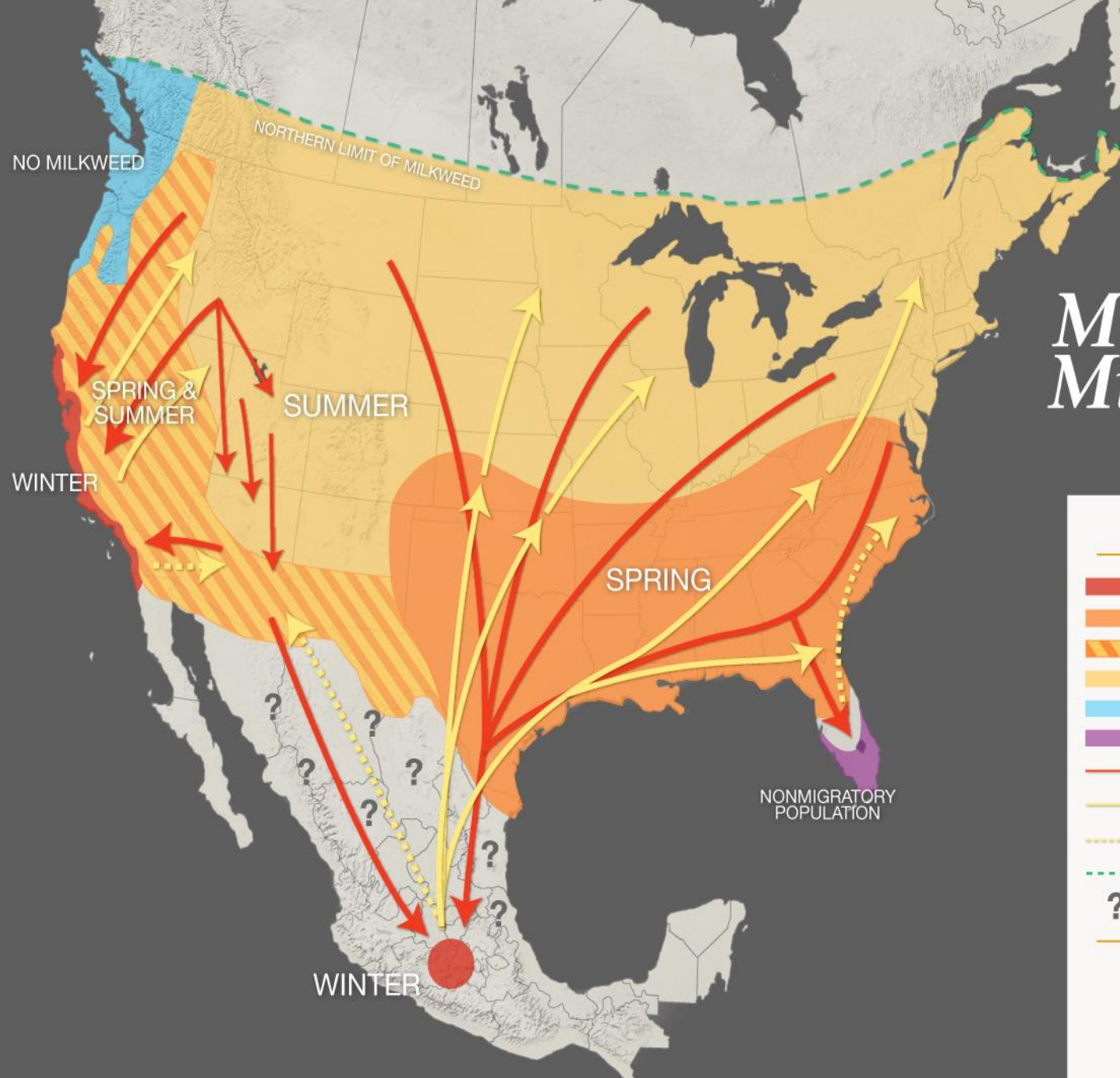
MONARCH BUTTERFLY AND POLLINATOR RESCUE PROGRAM



The Xerces Society Western Monarch Thanksgiving Count
Total Abundance Estimates w/Number of Sites Monitored from 1997-2018

© The Xerces Society for Invertebrate Conservation 2019





Monarch Migration

Spring & Fall



LEGEND

- Overwintering areas
- Spring breeding areas
- Spring & summer breeding areas
- Summer breeding areas
- No milkweed - no breeding area
- Nonmigratory population
- Fall migration
- Spring migration
- Unconfirmed migration
- Northern limit of milkweed
- ? Potential monarch breeding habitat

MONARCH BUTTERFLY AND POLLINATOR RESCUE PROGRAM

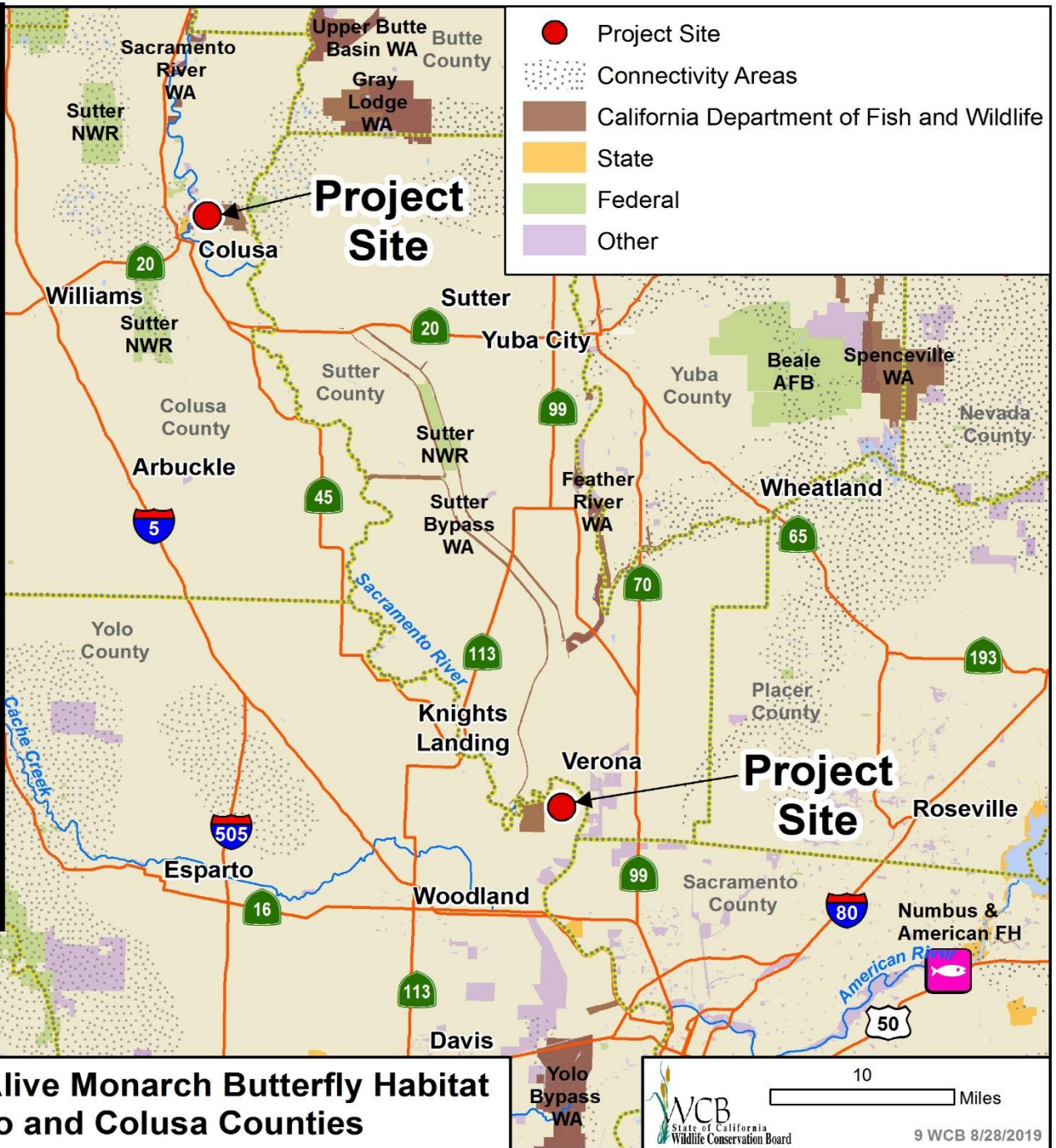
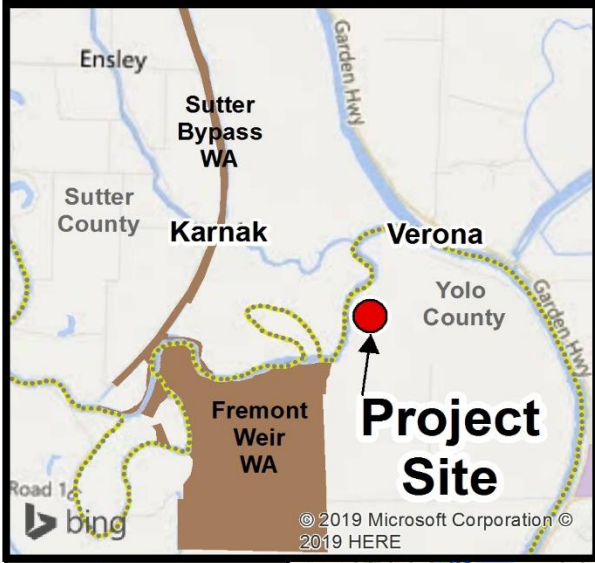
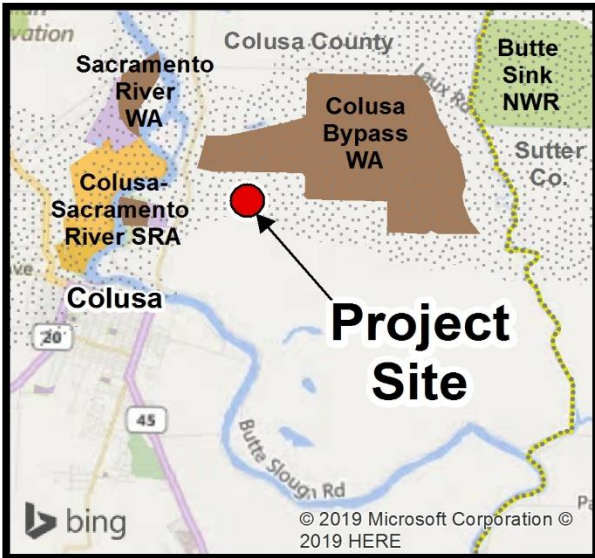


Western Monarch
Butterflies overwinter
in tree groves along
California's coast.

MONARCH BUTTERFLY AND POLLINATOR RESCUE PROGRAM



Monarch Butterfly
migration and breeding
habitat.



**Orchards Alive Monarch Butterfly Habitat
Yolo and Colusa Counties**

#9. Orchards Alive Monarch Butterfly Habitat



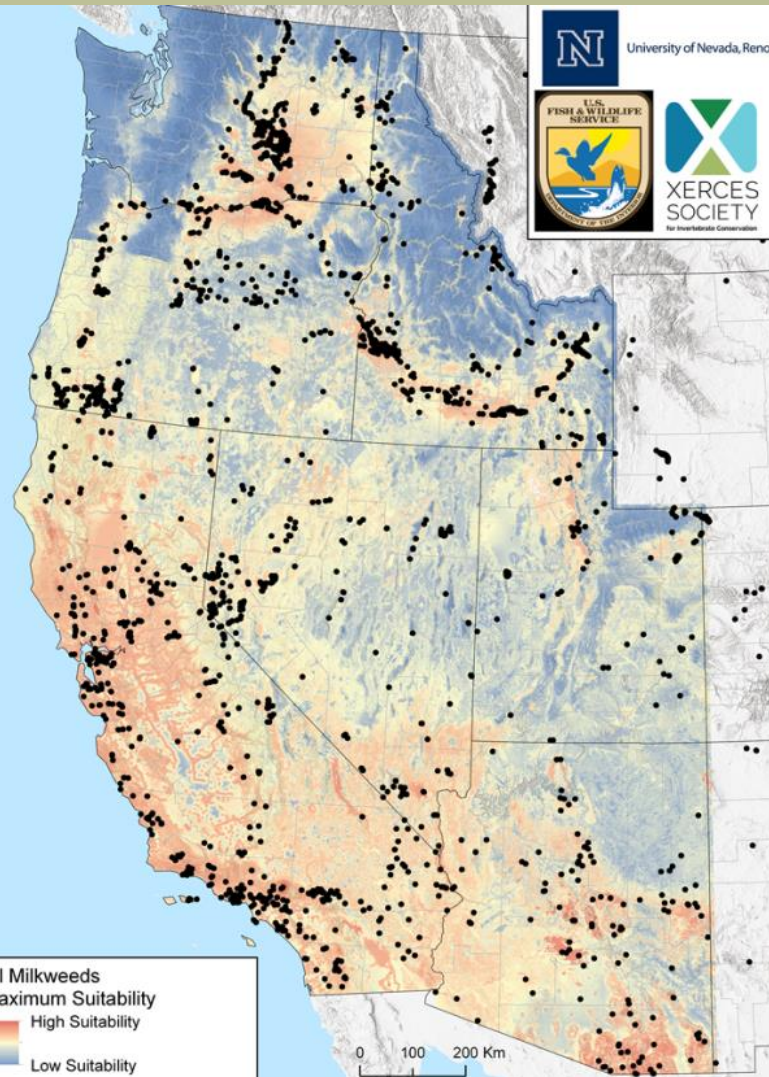
Five-year-old pecan orchard with existing cover crop. The project will enhance this cover crop to provide benefits to monarchs, pollinators, and other beneficial insects to promote ecological pest control, soil health, and pollinator habitat.

#9. Orchards Alive Monarch Butterfly Habitat



Newly planted pecan orchard. This project will transform the bare ground commonly found below rows of pecan trees into a multi-benefit habitat site and a model for orchard management. A specialized cover crop to benefit monarch butterflies, pollinators, and soil health will be planted between rows of pecan trees.

#16. Recovering and Sustaining Monarch and Pollinator Populations



Habitat Suitability Model

- Suitable habitat is widespread in the western states, in particular in the Central Valley of California, southern Idaho and eastern Washington. Smaller areas of highly suitable habitat are evident across northern Nevada, southern Arizona and other areas.
- Areas of relatively high habitat suitability for breeding monarchs can be prioritized for monarch habitat protection and management.

Red = best (most relatively suitable) monarch breeding habitat

Blue = worst (least relatively suitable) monarch breeding habitat

Map: Dilts et al. 2019

#16. Recovering and Sustaining Monarch and Pollinator Populations



Example of a pollinator hedgerow planted by Gold Ridge Resource Conservation District to benefit pollinator species.

#16. Recovering and Sustaining Monarch and Pollinator Populations



Narrow leaf milkweed planted as a companion plant with valley oak.

#16. Recovering and Sustaining Monarch and Pollinator Populations



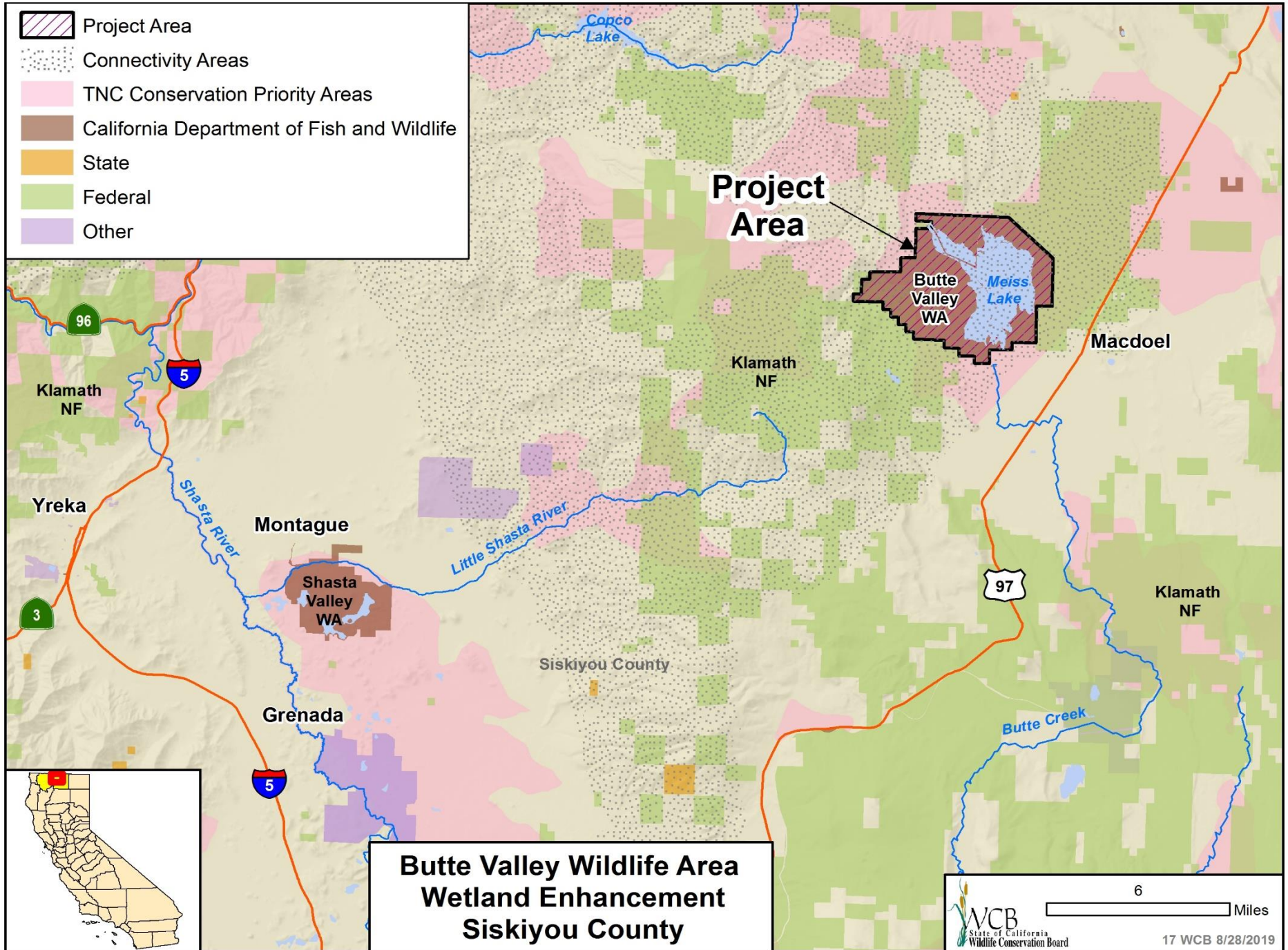
Resource Conservation Districts routinely work with school groups and community organizations as part of their outreach and educational programs.

#16. Recovering and Sustaining Monarch and Pollinator Populations




Pollinator plants
planted by a
Resource
Conservation
District to benefit
pollinator species.

-  Project Area
-  Connectivity Areas
-  TNC Conservation Priority Areas
-  California Department of Fish and Wildlife
-  State
-  Federal
-  Other



**Butte Valley Wildlife Area
Wetland Enhancement
Siskiyou County**



WCB
State of California
Wildlife Conservation Board

6 Miles

17 WCB 8/28/2019

#17. Butte Valley Wildlife Area Wetland Enhancement



Wetland Field within the Butte Valley Wildlife Area

#17. Butte Valley Wildlife Area Wetland Enhancement



Deeply excavated
borrow ditch
within wetland
unit

#17. Butte Valley Wildlife Area Wetland Enhancement



Failing set of screwgates, set at an incorrect elevation

#17. Butte Valley Wildlife Area Wetland Enhancement



Dilapidated corrugated metal riser (water control structure)

#17. Butte Valley Wildlife Area Wetland Enhancement



Swales within wetland field. Swale has been filled with silt, preventing adequate drainage

#17. Butte Valley Wildlife Area Wetland Enhancement



Transition to upland acres used as spring staging and nesting bird habitat.



**American River Ranch Parking Lot
Sacramento County**



3.5 Miles

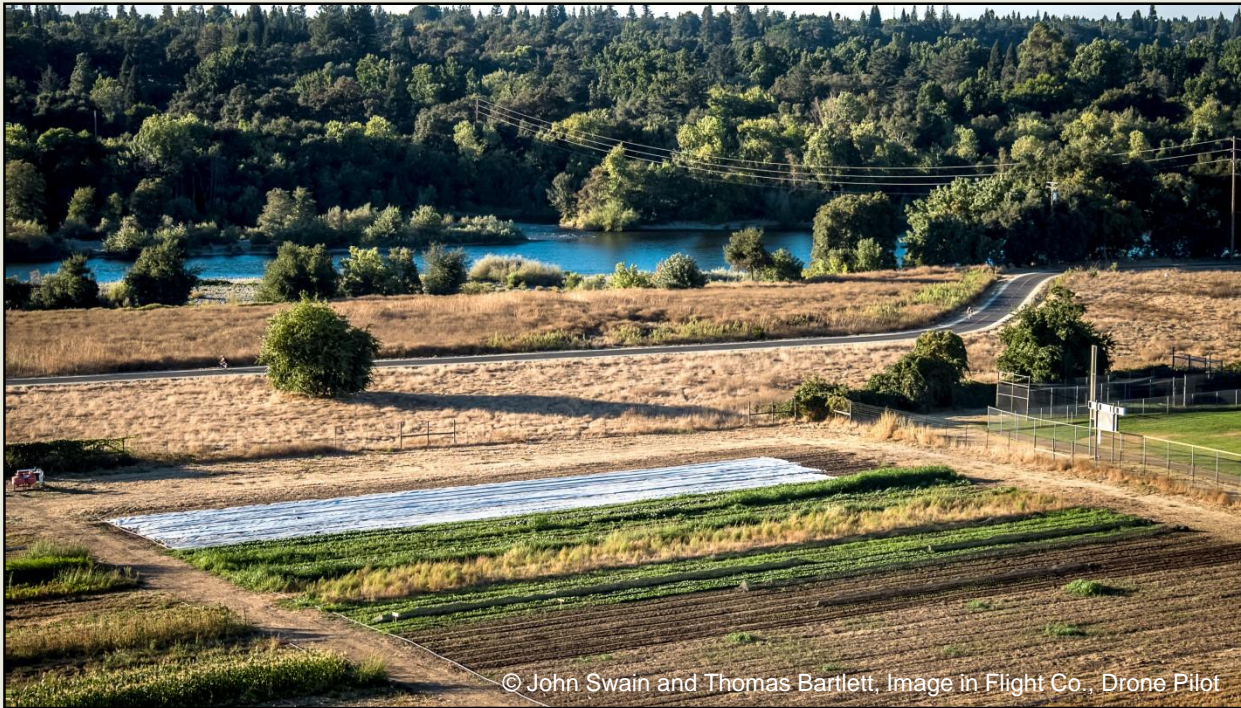


LAND USE DESIGNATIONS	ROADS AND TRAILS	PROPOSED	INFRASTRUCTURE
Property Boundary	Recreation Trail	Proposed Recreation Trail	EXISTING
Developed Recreation Area	Bicycle/Pedestrian Trail	Proposed/Completed Biking	Boat ramp, Trailer boat
Limited Recreation Area	Equestrian/Walking Trail	Naturalized Stormwater Buffer	Car Top Boat Launch
Nature Study Area	Unimproved Hiking Trail		Emergency phone
Open Space Preserve	Parkway Trail		Entry kiosk
Open Water	Interpretive Trail		Equestrian Staging
Protection Area	Stinking Bridge		Information kiosk
Recreation Reserve	Hike Roads		Interpretive kiosk
Area Plan Boundary	Light Rail		Interpretive Center
	Sky Access Trails		Balcony Cleanroom
			Bee Camping
			Parking
			Picnic Area
			Restrooms
			Utility Trees

6.22.12 (partial) Outdoor Classroom designation (OC)
 6.19.12 (partial) Picnic Area in Regan Park
 2.26.14 (partial) Interpretive Center in Chase Area
 8.09.14 (partial) Interpretive Center, Picnic Area
 2.11.15 Parking lot, Restrooms, and Interpretive Area for Camp Fire site



#18. American River Ranch Parking Lot



© John Swain and Thomas Bartlett, Image in Flight Co., Drone Pilot

- Last working ranch on the lower American River
- Acquired by County in 1960s
- Lease agreement with Soil Born Farms 2008
- Open to the public in 2008
- American River Ranch Master Plan 2014

#18. American River Ranch Parking Lot



Situated on mile 15 within the American River Parkway

- 27 acres of organic ag fields
- 20 acres of riparian habitat
- Landscaped with native and edible plants
- Interpretive buildings

Innovative Community Farm Model

#18. American River Ranch Parking Lot



Organic Farming • Environmental Land Stewardship • Future Farmers of America • Interpretive and Educational Activities • Summer Youth Camps • Farm Tours • Classes • Yoga • Farm Stand • CNPS Native Plant Nursery • Native Plant Nursery Workdays • Native Plant Sales

#18. American River Ranch Parking Lot



2017

17,000 Visitors

4,136 Class Participants

500 Farm Tours

3000 Seasonal Educational
Events

2018

18,500 Visitors

4,246 Class Participants

750 Farm Tours

3500 Seasonal Educational
Events

#18. American River Ranch Parking Lot



CHALLENGES



#18. American River Ranch Parking Lot



SOLUTIONS

- Grade existing dirt parking lot (20,703 square feet)
- Place gravel on graded lot
- Construct curbs and pedestrian pavers
- Install deer fence
- Construct and hydroseed bioswale
- Install irrigation system and stub outs
- Retrofit drainage inlet
- Consult with SMUD on relocating guy wires
- Install signage

#18. American River Ranch Parking Lot



OUTCOMES

- Level and manageable parking lot
- Formal walking paths
- Safety for parking patrons
- Stormwater efficiencies
- Signage acknowledging County Parks, WCB, and Proposition 68

Graveling the way to:

- Paved parking lot with 57 designated parking stalls and 3 ADA stalls
- Plantings
- Equity for all walks of life

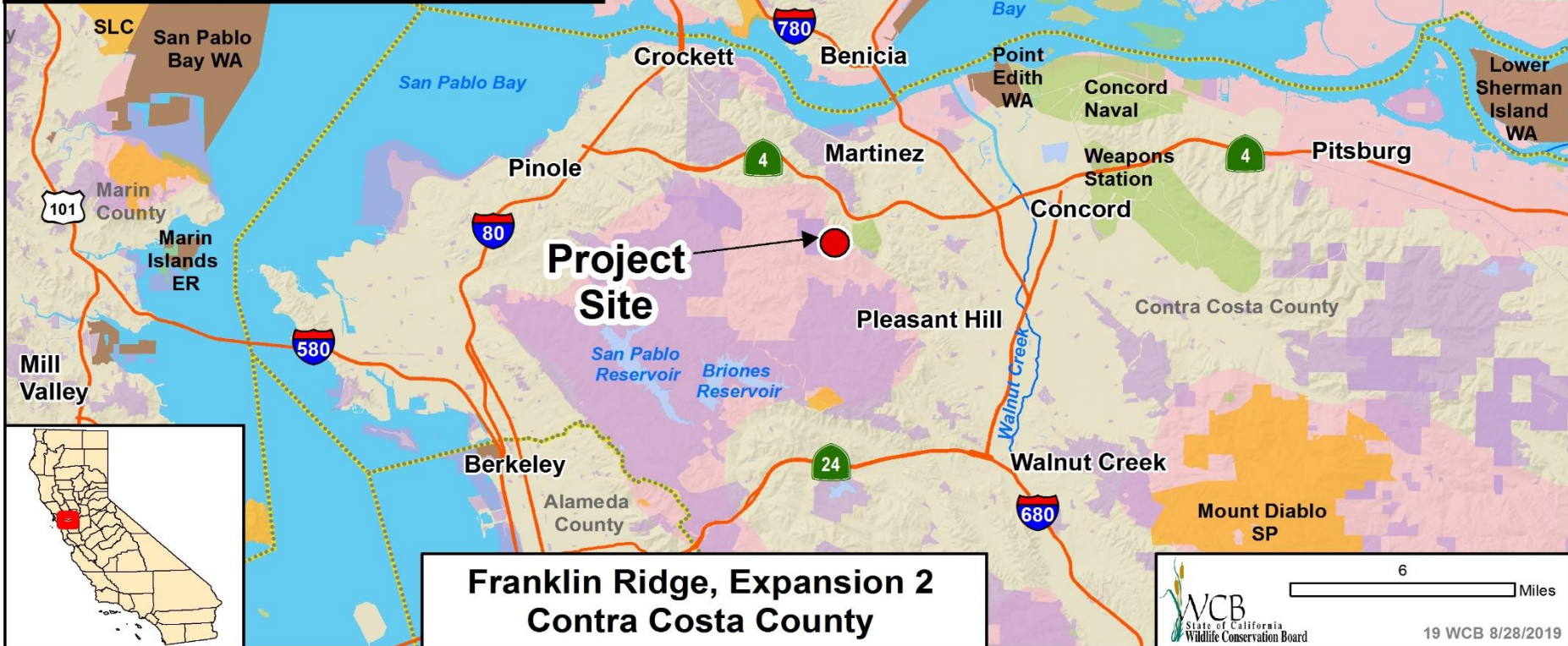
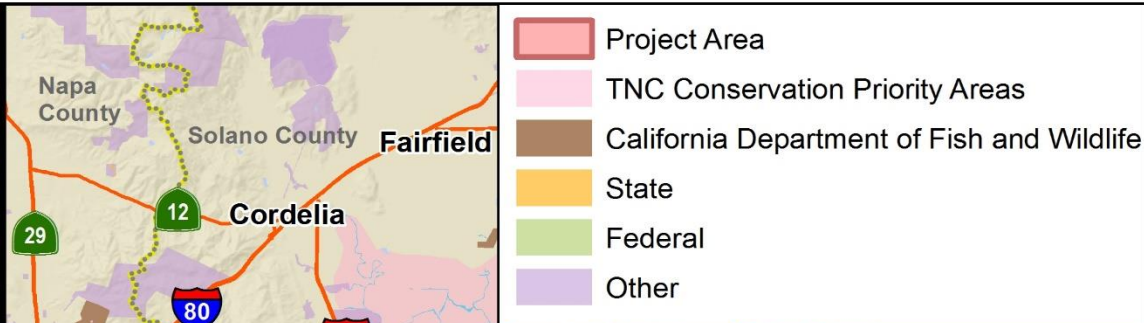
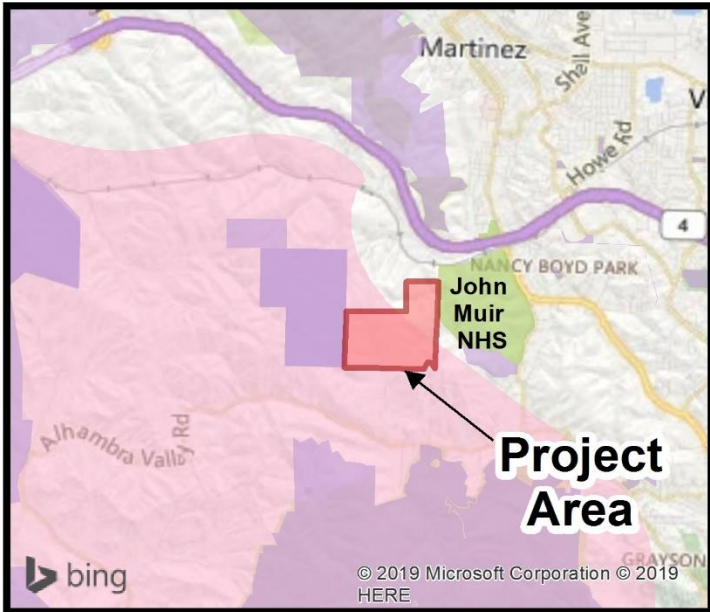
#18. American River Ranch Parking Lot



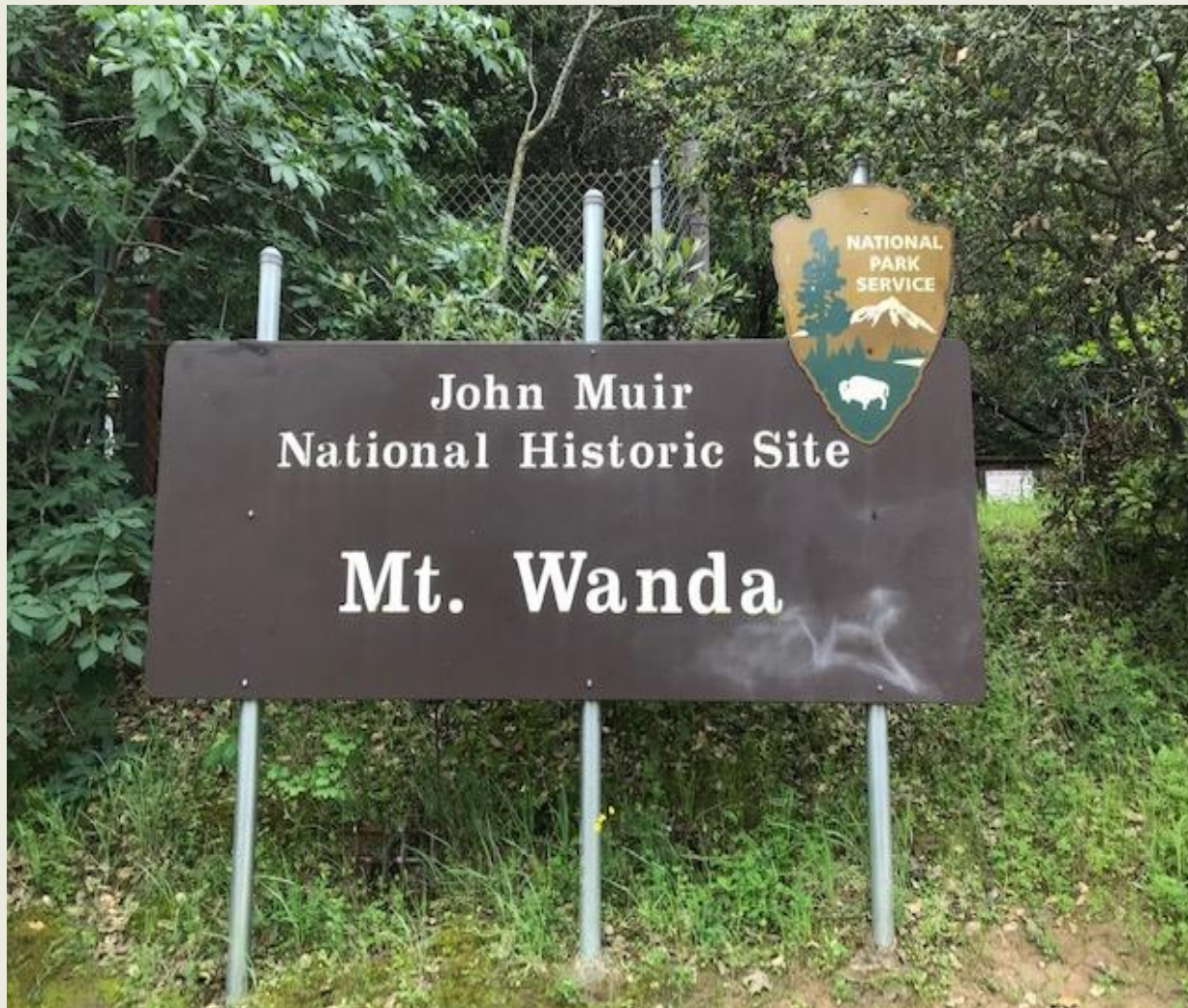
QUESTIONS?



© Jim Wadsworth



#19. Franklin Ridge, Expansion 2



Project is near the historic John Muir Home and Park

#19. Franklin Ridge, Expansion 2



Hiking trails provide a view of the surrounding valley

#19. Franklin Ridge, Expansion 2



Distant ocean views from the ridgetop of the property

#19. Franklin Ridge, Expansion 2



View of the
Carquinez Bridge
from the property

#19. Franklin Ridge, Expansion 2

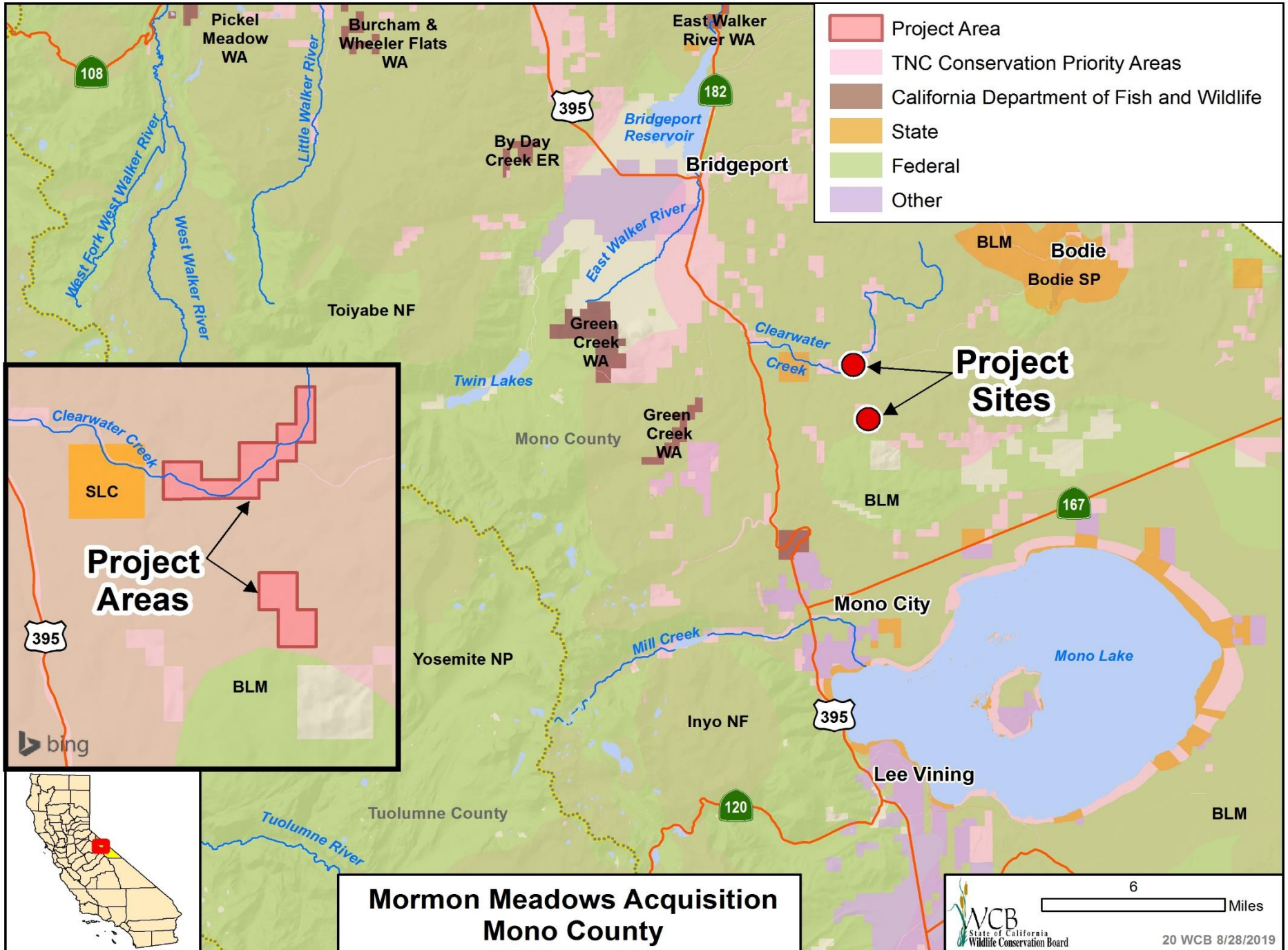


Hiking trails wind through the property

#19. Franklin Ridge, Expansion 2



Tree grove near
an adjacent
riparian corridor



- Project Area
- TNC Conservation Priority Areas
- California Department of Fish and Wildlife
- State
- Federal
- Other

Project Sites

Project Areas

**Mormon Meadows Acquisition
Mono County**

6 Miles

WCB
State of California
Wildlife Conservation Board

20 WCB 8/28/2019



bing

#20. Mormon Meadows



Two male sage-grouse displaying at a strutting ground (lek) to attract females in the Bodie Hills

#20. Mormon Meadows



Mormon Meadow south of Bodie Road looking west.

#20. Mormon Meadows



Mormon Meadow south of Bodie Road looking south toward the two Bridgeport Canyon parcels. Coyote Springs road is shown to the east.

#20. Mormon Meadows



Looking west from Coyote Springs Road at Bridgeport Canyon parcels.

#20. Mormon Meadows



Mormon Meadow south of Bodie Road looking east

#21. Deadman II Forest Resilience Project



- This item has been withdrawn from consideration at this time.

#22. Tricolor Blackbird Wetland Habitat Enhancement



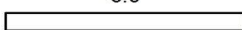

- This item has been withdrawn from consideration at this time.



Project Area
 California Department of Fish and Wildlife
 State
 Federal
 Other



Colton Sand Dunes Acquisition
San Bernardino County

3.5 Miles


 23 WCB 8/28/2019

#23. Colton Sand Dunes



Habitat of the Delhi sands flower-loving fly, view is to the northwest with the San Gabriel Mountains in the distance.

#23. Colton Sand Dunes



The Delhi sands flower-loving fly (*Rhaphiomidas terminatus abdominalis*), an endangered insect found only in the Colton Dunes.

#23. Colton Sand Dunes



Open dunes on the adjacent property located immediately south of the subject property.

#23. Colton Sand Dunes



Open sand within the subject property that has been impacted by unauthorized off-road vehicle activity. View is to the northeast with the San Bernardino Mountains in the distance.

#23. Colton Sand Dunes



Tracks of local wildlife on an adjacent property located immediately south of the subject property.

#23. Colton Sand Dunes

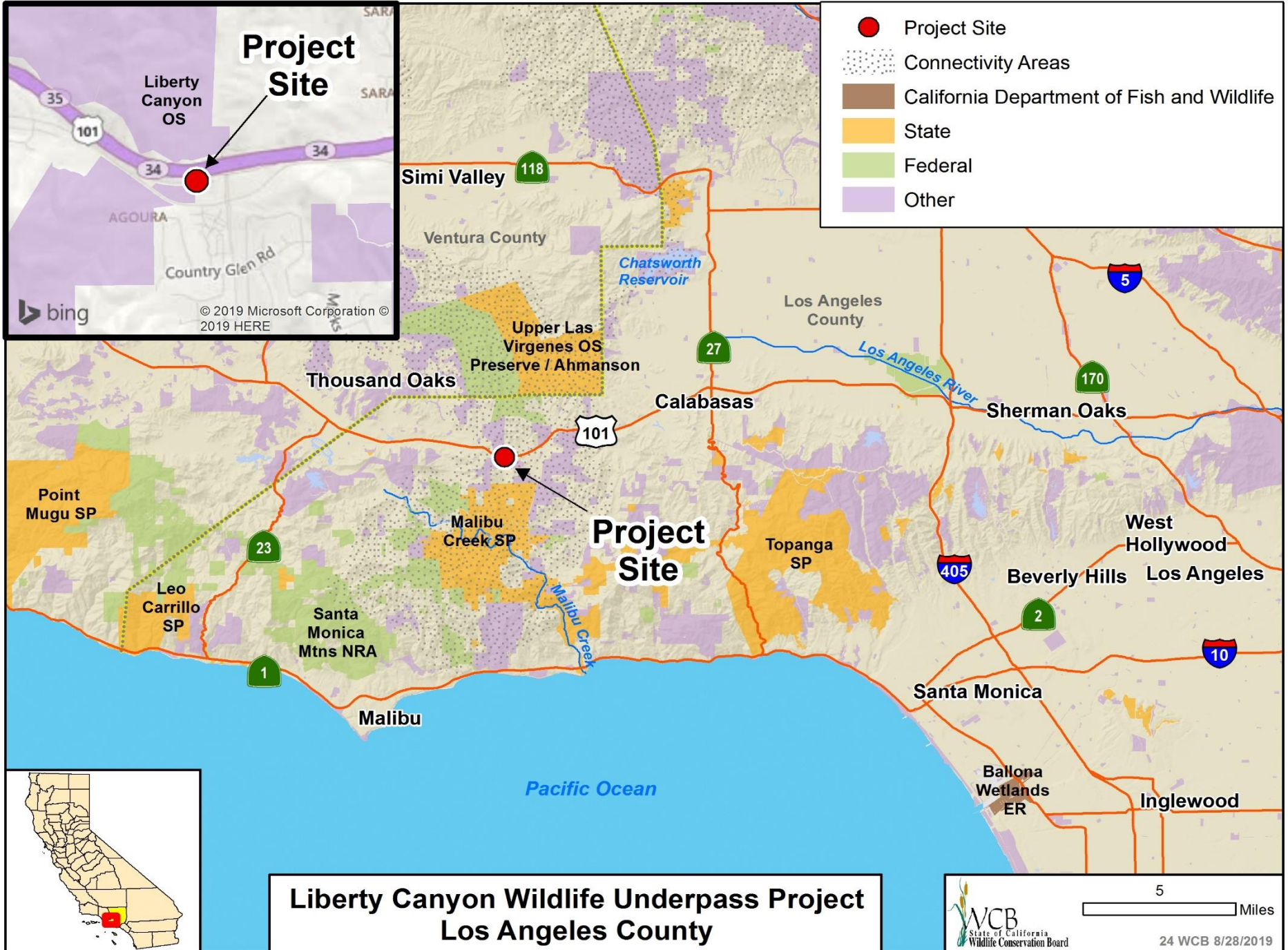


Burrowing owl (*Athene cunicularia*), a CDFW Species of Special Concern is a year-round resident of the Colton Dunes

#23. Colton Sand Dunes



Thurber's Buckwheat (*Eriogonum thurberi*) a native annual found in the Colton Dunes and other arid locations in the southwestern U.S.



- Project Site
- Connectivity Areas
- California Department of Fish and Wildlife
- State
- Federal
- Other

Project Site

Liberty Canyon OS

AGOURA

Country Glen Rd

bing

© 2019 Microsoft Corporation © 2019 HERE

**Liberty Canyon Wildlife Underpass Project
Los Angeles County**

WCB
State of California
Wildlife Conservation Board

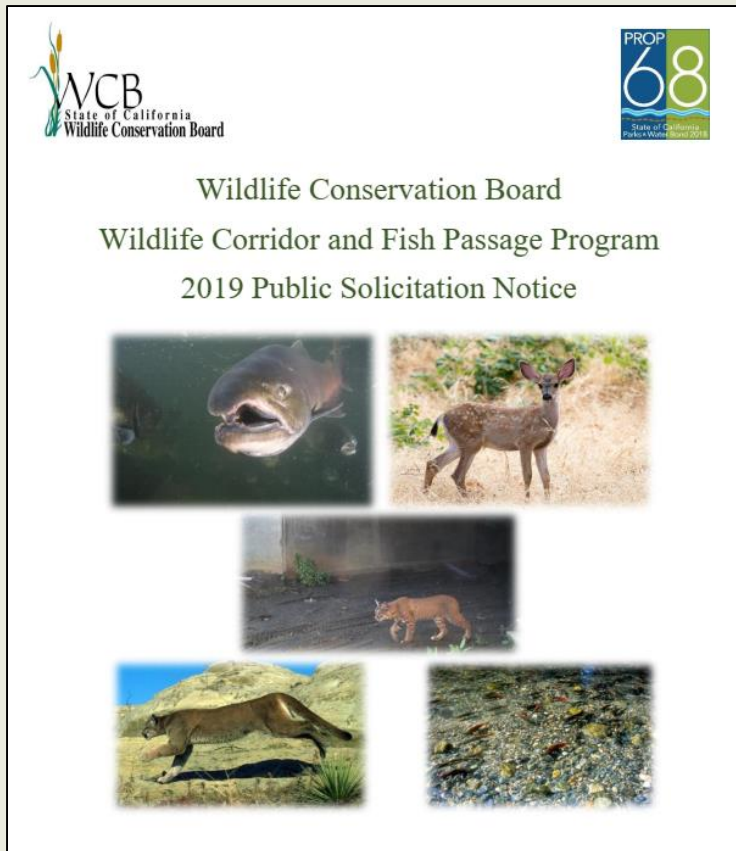
5 Miles

24 WCB 8/28/2019

#24. Liberty Canyon Wildlife Underpass Project



California Drought, Water, Parks, Climate, Coastal Protection, and Outdoor Access For All Act of 2018 (Proposition 68)



The graphic contains the WCB logo in the top left and the Proposition 68 logo in the top right. The text reads: 'Wildlife Conservation Board', 'Wildlife Corridor and Fish Passage Program', and '2019 Public Solicitation Notice'. Below the text are five images: a fish, a deer, a cougar, a mountain lion, and a rocky stream bed.

- \$30 million for projects to construct, repair, modify, or remove transportation infrastructure or water resources infrastructure improving passage for wildlife or fish
- Four Categories of Projects:
 - Wildlife Corridor – Implementation
 - Wildlife Corridor - Planning
 - Fish Passage – Implementation
 - Fish Passage - Planning
- Pre-Application Concept Paper followed by a Full Application for selected projects

TIMELINE

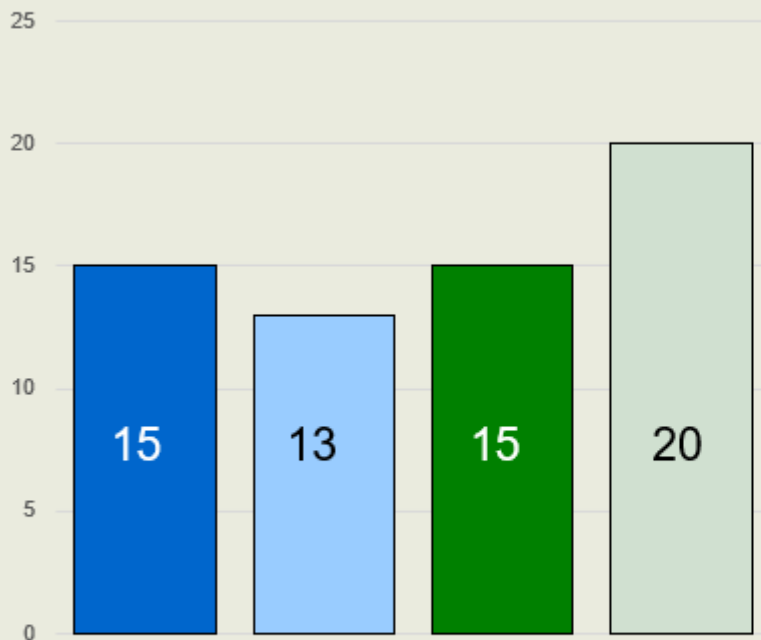
- April 2, 2019: Solicitation Released
- April 26, 2019: Pre-Applications Due
- June 21, 2019: Full Applications Due
- August 5, 2019: Final Selection Meeting

#24. Liberty Canyon Wildlife Underpass Project



Pre-Application Response

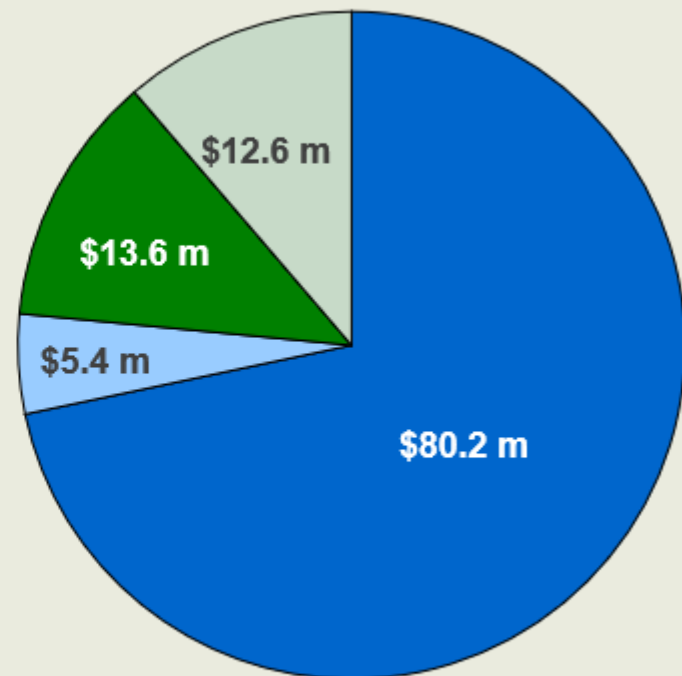
63 Pre-Applications Received



Fish Passage - Implementation

Fish Passage - Planning

\$111,847,000 in Requests



Wildlife Corridor - Implementation

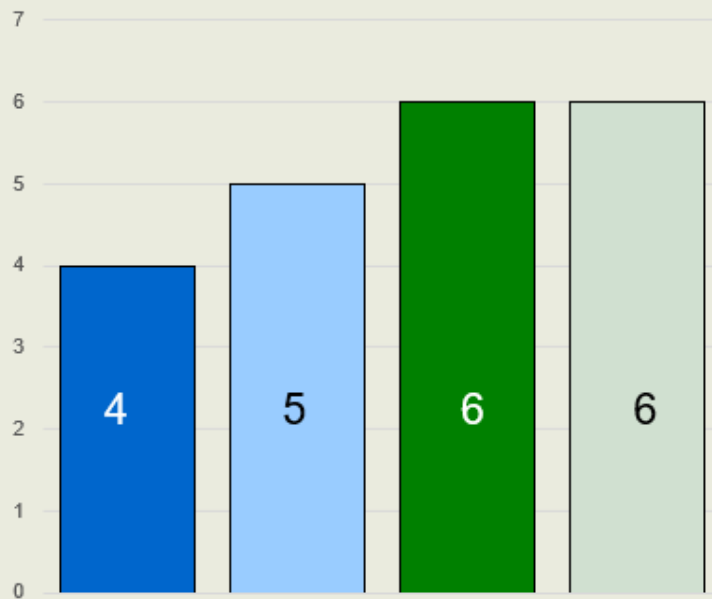
Wildlife Corridor - Planning

#24. Liberty Canyon Wildlife Underpass Project



Full Applications

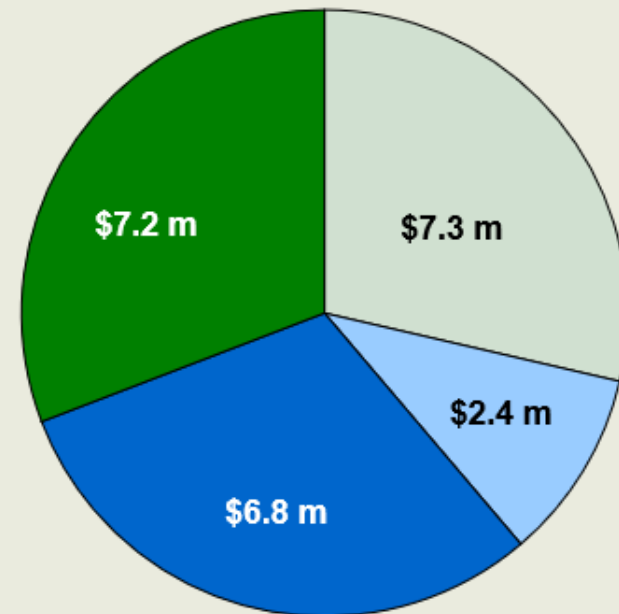
21 Full Applications Received



Fish Passage - Implementation

Fish Passage - Planning

\$23,802,000 in Requests



Wildlife Corridor - Implementation

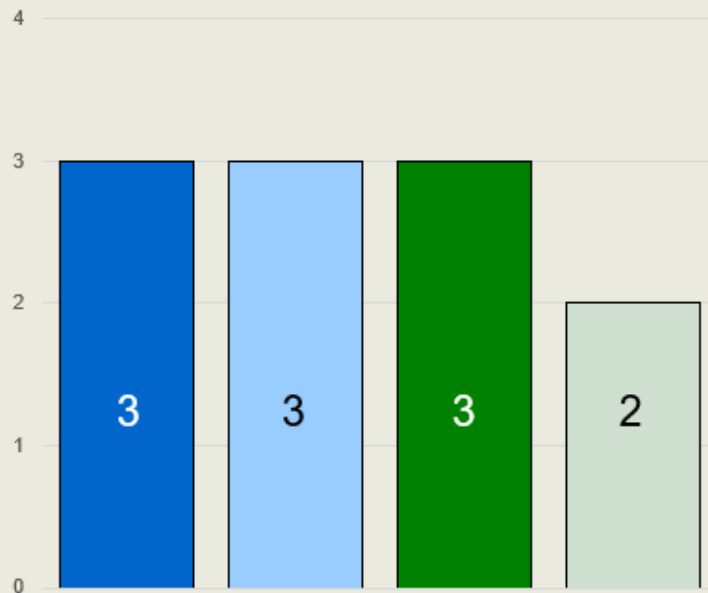
Wildlife Corridor - Planning

#24. Liberty Canyon Wildlife Underpass Project



Final Selection

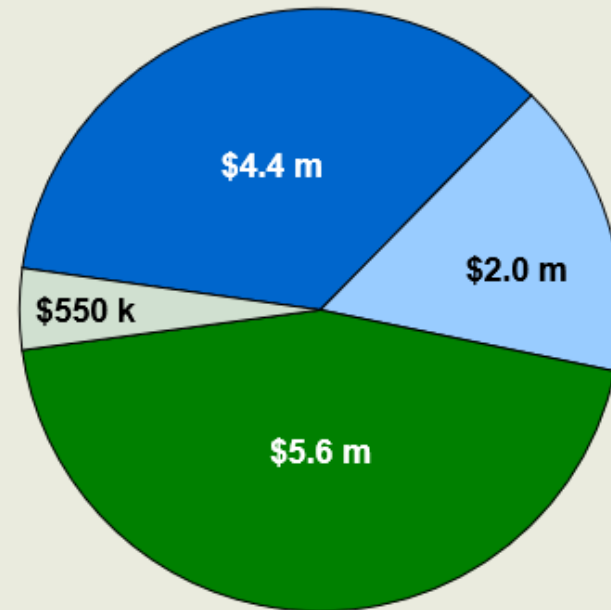
11 Projects Selected



Fish Passage - Implementation

Fish Passage - Planning

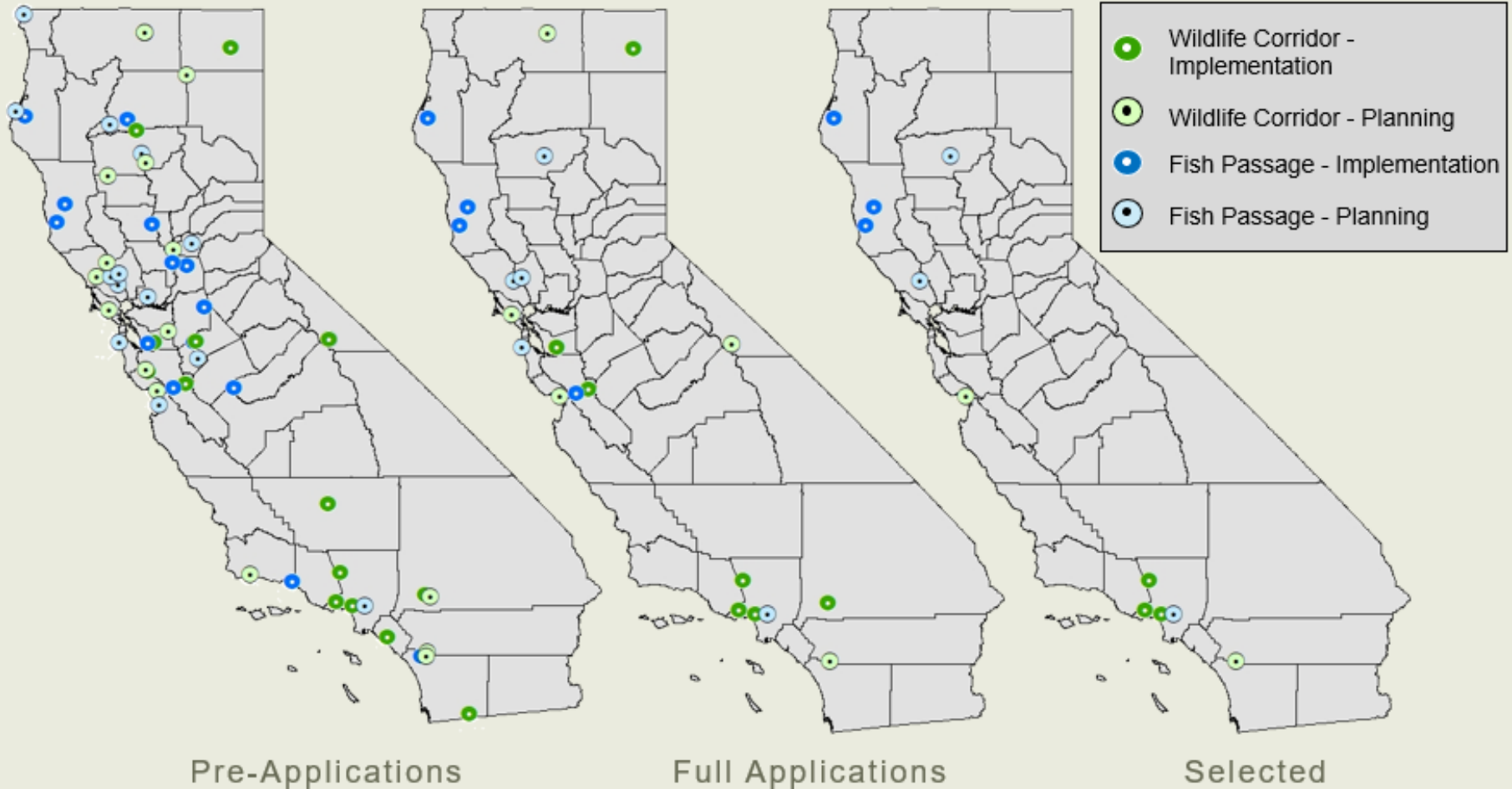
\$12,631,563 in Requests



Wildlife Corridor - Implementation

Wildlife Corridor - Planning

#24. Liberty Canyon Wildlife Underpass Project



#24. Liberty Canyon Wildlife Underpass Project



Liberty Canyon Road Underpass

#24. Liberty Canyon Wildlife Underpass Project



Project Location

#24. Liberty Canyon Wildlife Underpass Project



WCB approved the “Liberty Canyon Wildlife Crossing Project” in November 2014.

- Dry stream bed to simulate a riparian corridor through the Liberty Canyon Road underpass
- Bio-swale to capture, treat, and infiltrate stormwater runoff
- 3,500 native plants installed to create 6.5 acres of habitat
- Reclaimed water irrigation system

November 2018 the Woolsey Fire burned more than 96,000 acres in Southern California

- 80-90 percent of the native plants that were installed
- 20 percent of the stones in the bio-swale.
- Complete loss of the irrigation system
- Trash and debris comprised of burned irrigation pipe and dead vegetation.

#24. Liberty Canyon Wildlife Underpass Project



Plant Establishment Before Woolsey Fire

#24. Liberty Canyon Wildlife Underpass Project



September 17, 2018



January 29, 2019

#24. Liberty Canyon Wildlife Underpass Project



Restoration Work Destroyed By Fire

#24. Liberty Canyon Wildlife Underpass Project



Fire Damaged Bio-swale And Irrigation Lines

#24. Liberty Canyon Wildlife Underpass Project



Conceptual model of proposed wildlife overpass near Liberty Canyon Road

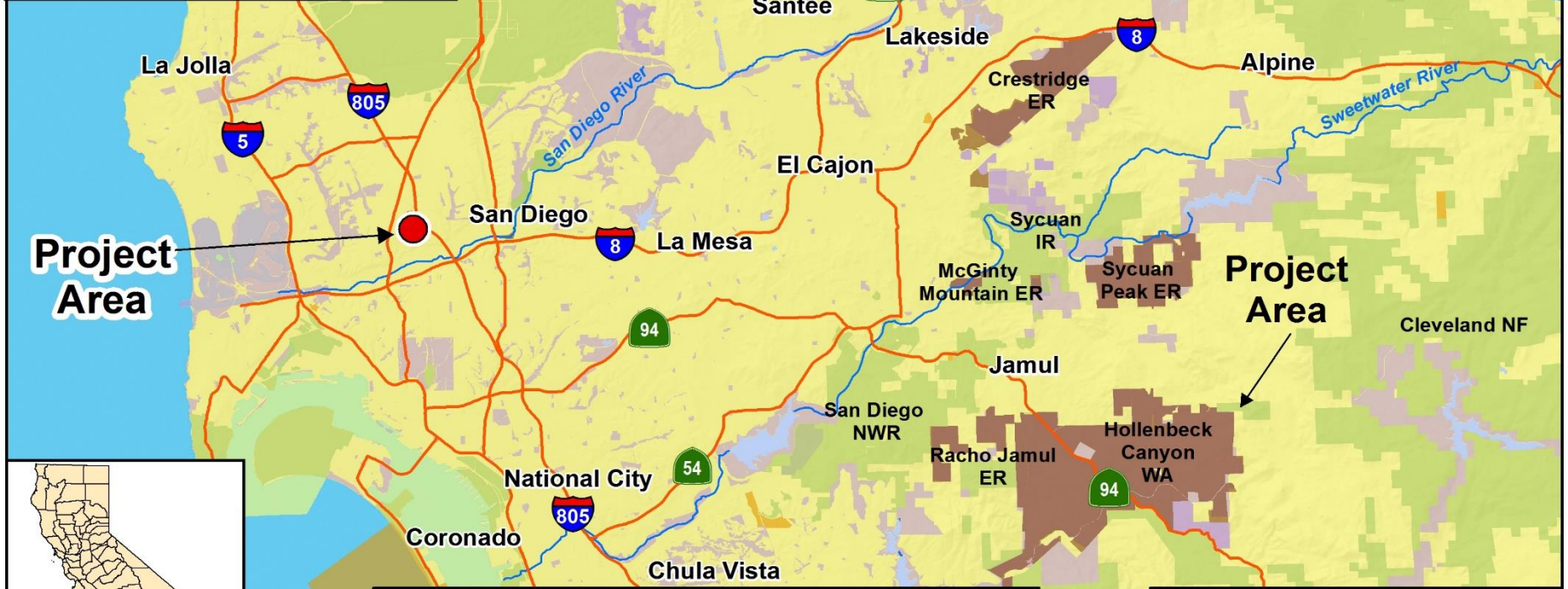
Project Objectives:

- Remove debris from the fire
- Re-install irrigation lines
- Repair damage to the bio-swale
- Restore one acre of riparian, three acres of valley oak grasslands, and three acres of coastal sage scrub habitats

Restoration and passage improvement elements will work in concert with a future wildlife overpass



- Project Area
- HCP/NCCP
- California Department of Fish and Wildlife
- State
- Federal
- Other



**Mission Center Property Acquisition
San Diego County**

WCB
State of California
Wildlife Conservation Board

4.5 Miles

25 WCB 8/28/2019

#25. Mission Center Property



Riparian area running through property

#25. Mission Center Property



Habitat and sloped bank areas on western portion of property

#25. Mission Center Property



Trails wind through north section of property adjacent to City of San Diego property

#25. Mission Center Property



Numerous watering areas for the resident and migratory birds, reptiles and mammals