



# CALIFORNIA'S COVID-19 RESPONSE

July 1, 2020

# Current Status of COVID-19 in California

**COVID-19 continues to spread across California at an alarming rate.**

**Further action is required to stop the spread of the virus and reduce hospitalizations.**

# California is Taking Targeted Action

- Effective immediately, California is instructing **certain sectors to close indoor operations** due to risk of spread.

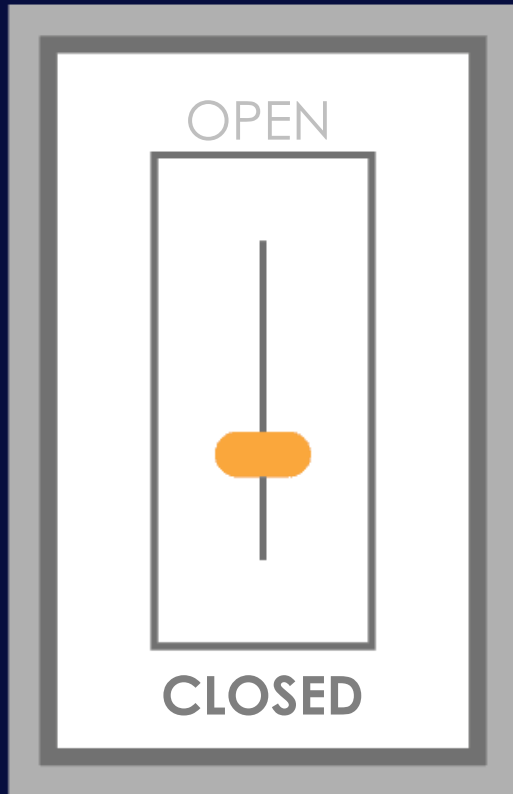
# California is Taking Targeted Action

- Effective immediately, California is instructing **certain sectors to close indoor operations** due to risk of spread.
- This applies to **all counties** that have been **on the County Monitoring List for 3 consecutive days**.

# California is Taking Targeted Action

- Effective immediately, California is instructing **certain sectors to close indoor operations** due to risk of spread.
- This applies to **all counties** that have been **on the County Monitoring List for 3 consecutive days**.
- This guidance will remain in place for **at least 3 weeks**.

# California's Approach is a Dimmer Switch



Dimming is based on local conditions to reduce the spread of the virus.

# 19 Counties Impacted by Action



- Contra Costa
- Fresno
- Glenn
- Imperial
- Kern
- Kings
- Los Angeles
- Merced
- Orange
- Riverside
- Sacramento
- San Bernardino
- San Joaquin
- Santa Barbara
- Santa Clara
- Solano
- Stanislaus
- Tulare
- Ventura

# Sectors to Close Indoor Operations

**Restaurants**

**Wineries and Tasting Rooms**

**Movie Theaters**

**Family Entertainment Centers**

**Zoos and Museums**

**Cardrooms**



# Sectors to Close All Operations

**Bars.**

# State Beach Parking Closures

- All parking facilities at state beaches in Southern California and the Bay Area will be **closed** for upcoming weekend.
- In counties that close local beaches, the State will follow suit and close state beaches.
- Other state parks remain open, with measures in place to reduce visitation and limit overcrowding.

# 4th of July Weekend

- Counties with mandatory closures should consider cancelling firework shows.
- Californians should not gather with people you do not live with.
- Avoid crowds.

# Establishing Enforcement Strike Teams

## California will enforce public health orders with Multi-Agency Strike Teams:

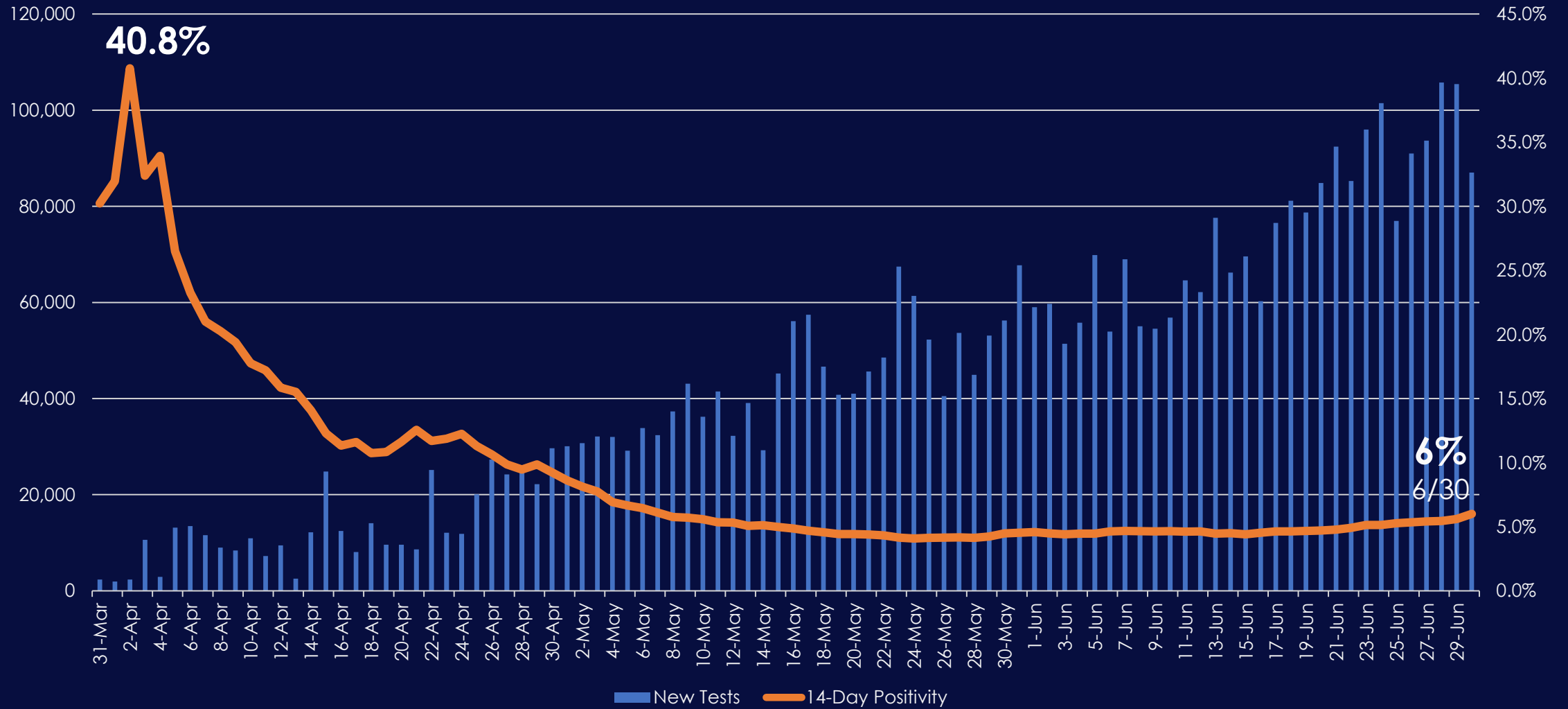
- Teams will target non-compliant workplaces
- Strike Teams include: ABC, CalOSHA, Dept of Business Oversight, Dept of Consumer Affairs, CHP
- Teams will build partnerships with local public health departments and businesses

# Today's COVID-19 Case Numbers

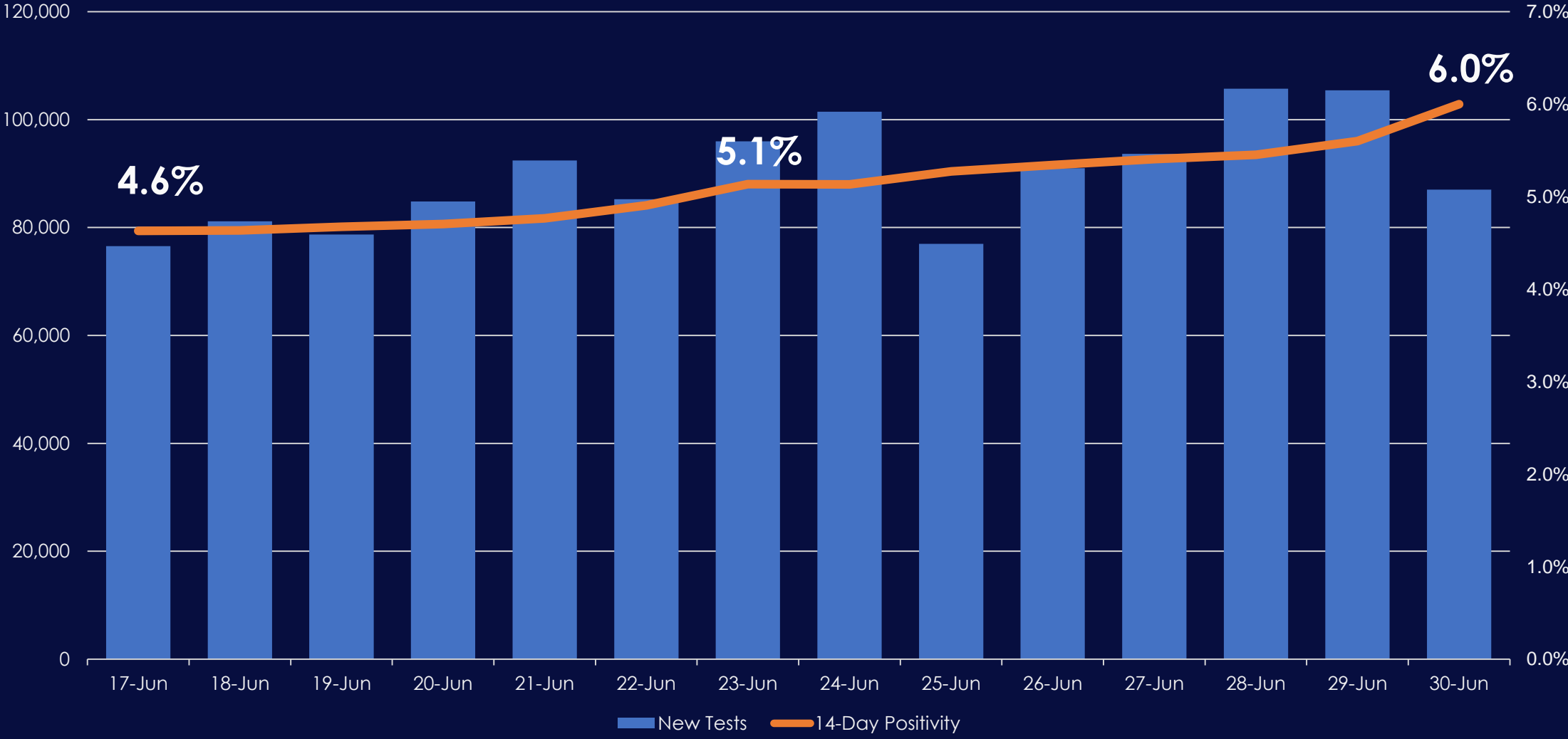
**5,898**

June 30

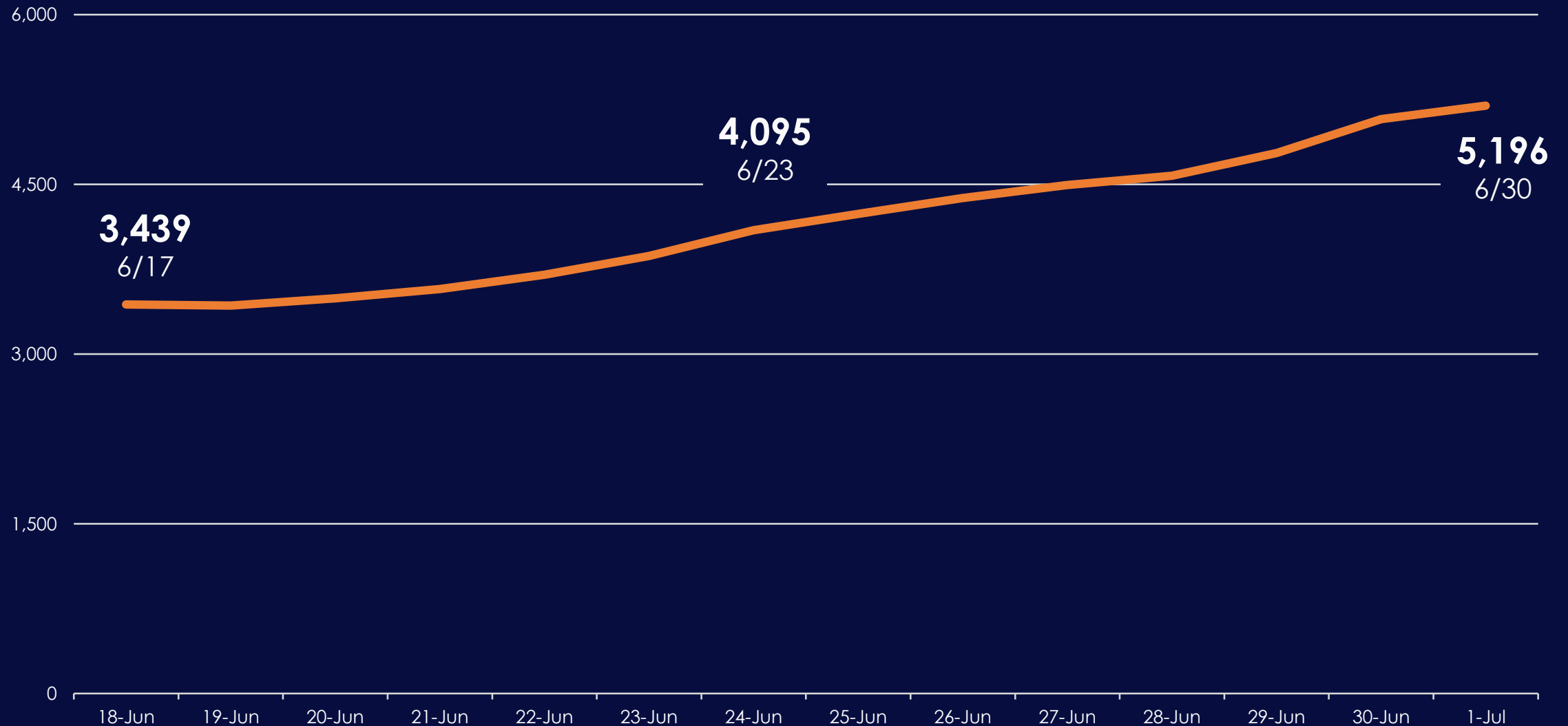
# Total Tests vs. Positivity Rate



# Closer Look at Test Positivity Rate



# COVID-19+ Hospitalizations are Increasing

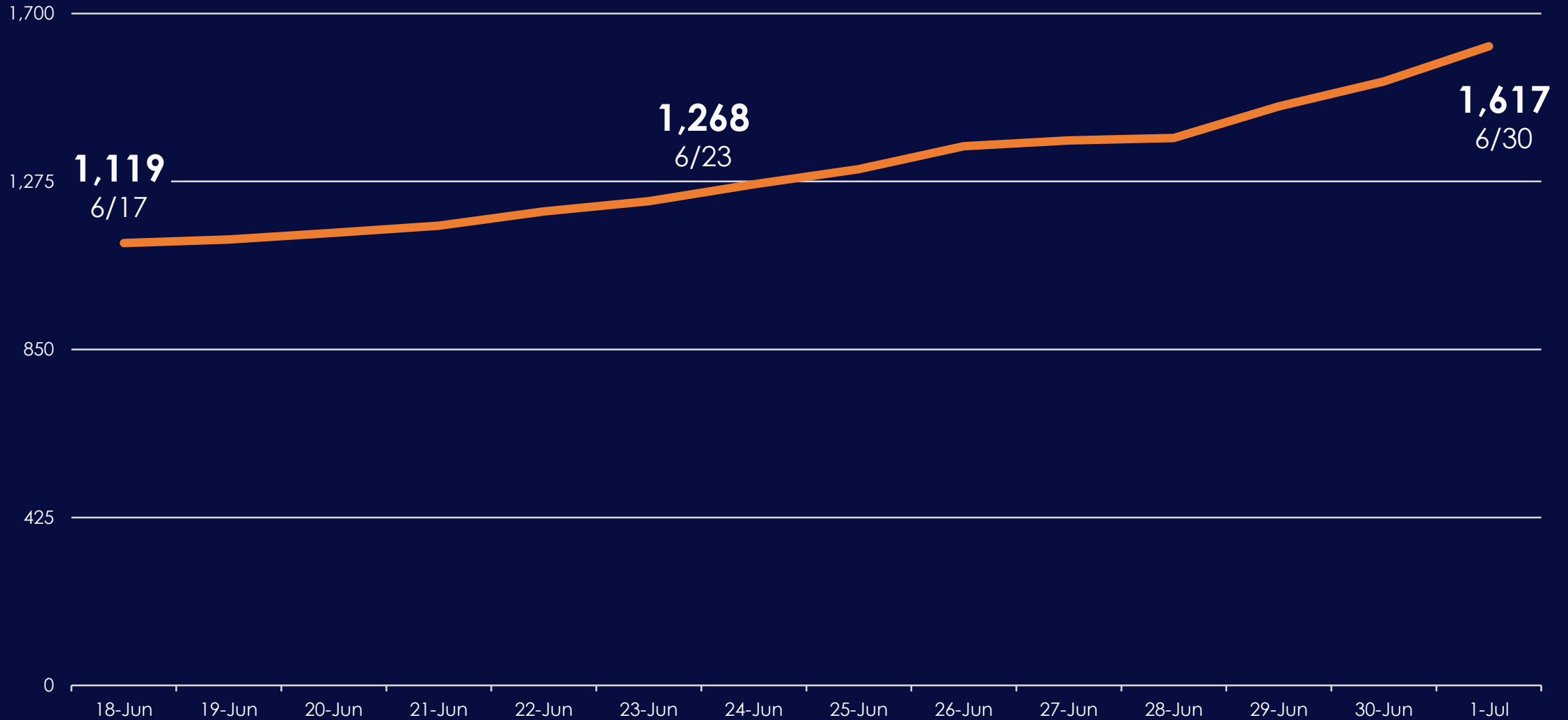




# California's Healthcare System Capacity



# COVID-19+ ICU Admissions are Increasing



# California's Critical Care Capacity

**1,617**

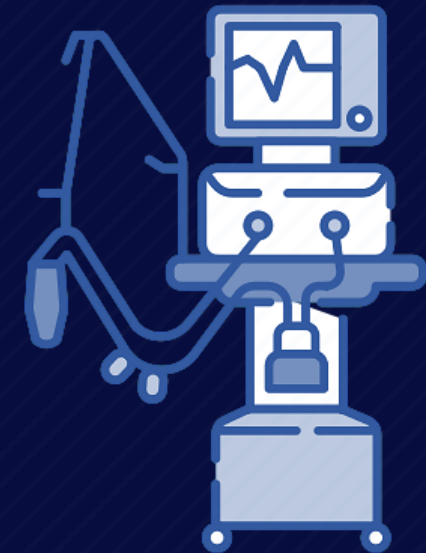
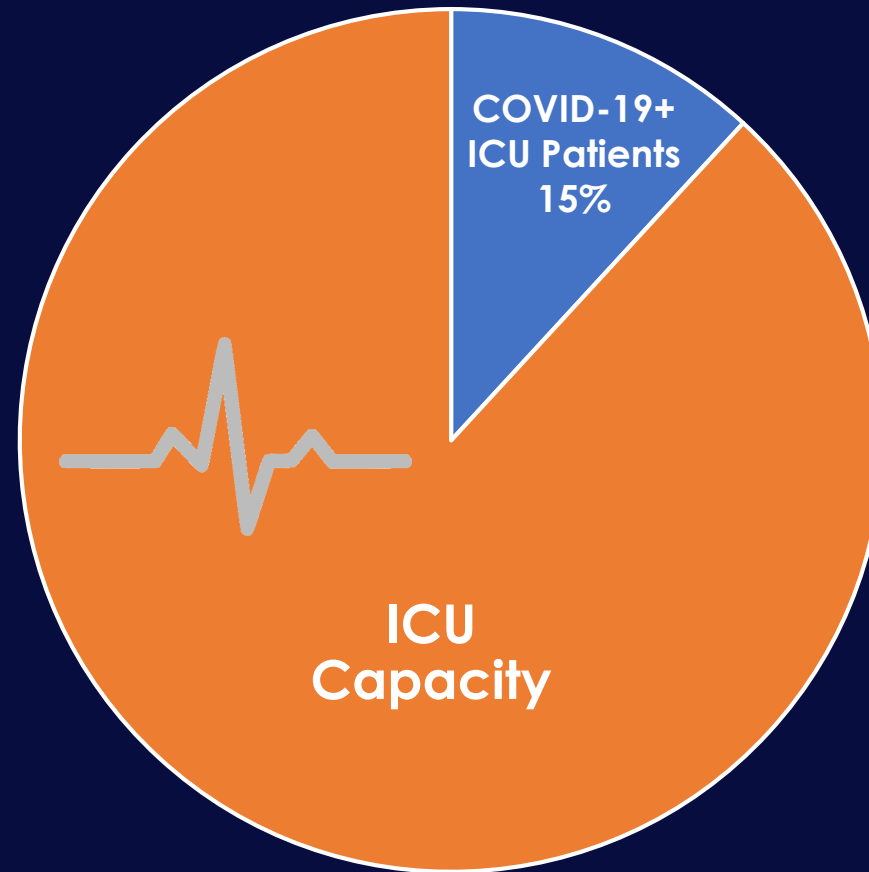
Total ICU  
COVID-19+ Patients

**3,580**

Total ICU Beds  
Available

**10,906**

Total ICU Beds



**11,430**

Ventilators Available

**REMINDER: YOUR ACTIONS CAN SAVE LIVES**

**Wear a face covering**

**Physically distance**

**Wash your hands**



Learn more at  
**[covid19.ca.gov](https://covid19.ca.gov)**