



CENTER for LAND-BASED LEARNING





CENTER for LAND-BASED LEARNING

Our Mission is to inspire, educate, and cultivate future generations of farmers, agricultural leaders and natural resource stewards.





Our Programs





CENTER for LAND-BASED LEARNING

SLEWS PROGRAM

The Student and Landowner Education and Watershed Stewardship Program





The SLEWS Program engages high school students in habitat restoration projects in order to enhance local knowledge and classroom learning, develop leadership skills and effect real, on-the-ground change.

SLEWS

Each high school class adopts a habitat restoration project for the duration of the school year, visiting 3-5 times. Students plant native trees and shrubs, build irrigation systems and participate in ecological field studies. These integrated learning experiences combine teambuilding, science learning, habitat restoration and reflection activities with outdoor exploration.



Partnerships

- **Restoration partners** (often RCDs)
 - Plan project, order supplies, direct restoration work and lead demos, site maintenance
- **Teachers**
 - Connect to school standards, recruit students
- **Mentors**
 - Work with students in small groups, share personal experiences
- **Landowners**
 - Share land with students, work with restoration partner to plan project
- **SLEWS Program Coordinator**



Stewardship Projects

- Riparian habitat
- Grasslands
- Wetlands
- Wildlife and tailwater ponds
- Erosion control
- Hedgerows
- Buffer strips
- Upland plantings, including Oak woodlands



Restoration Activities

- Seed collection
- Collecting cuttings
- Planting trees and shrubs
- Planting grasses
- Irrigation
- Bird boxes
- Planting sedges and rushes
- Maintenance and weed control
- Monitoring

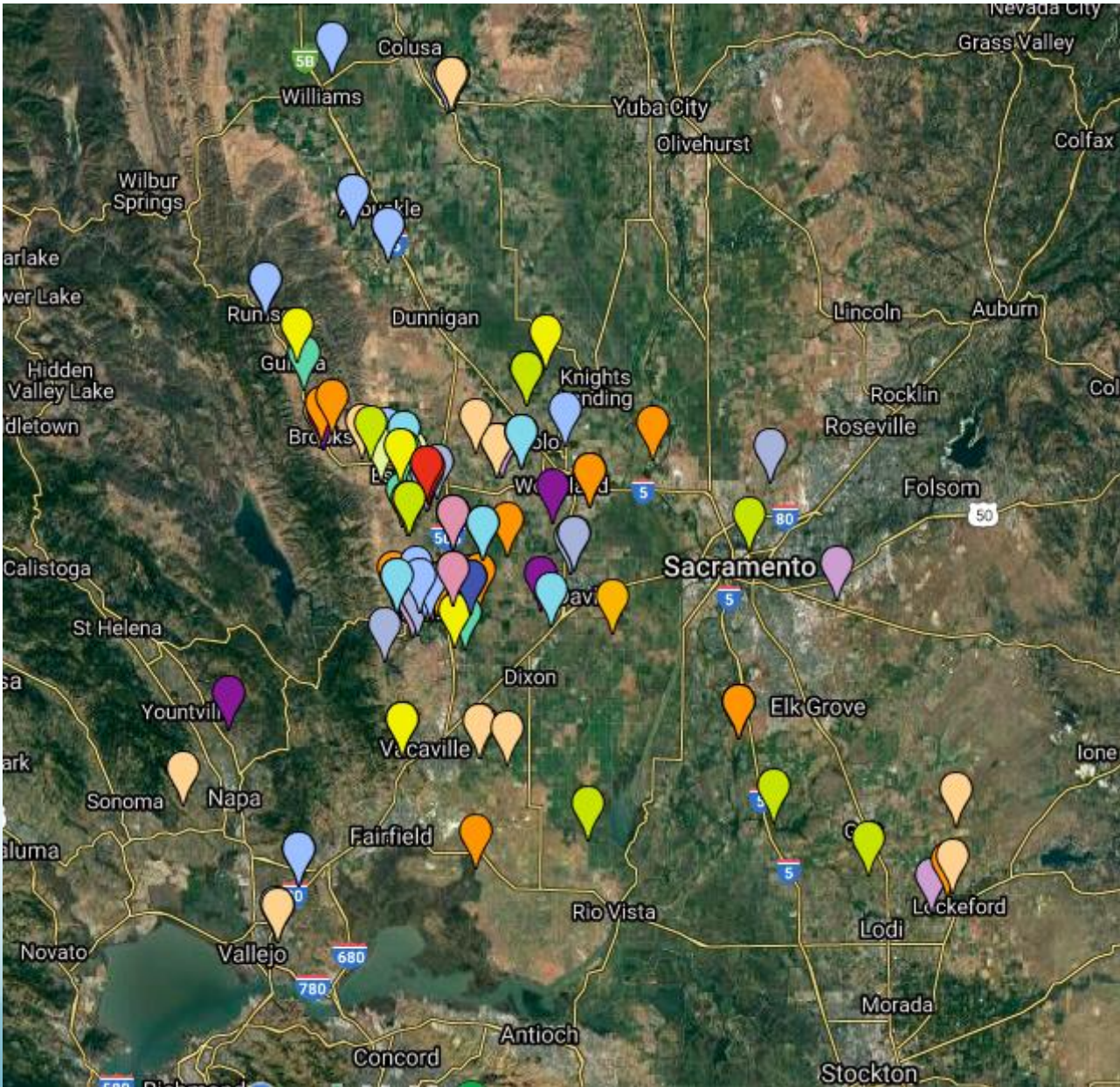


Impact on the Ground

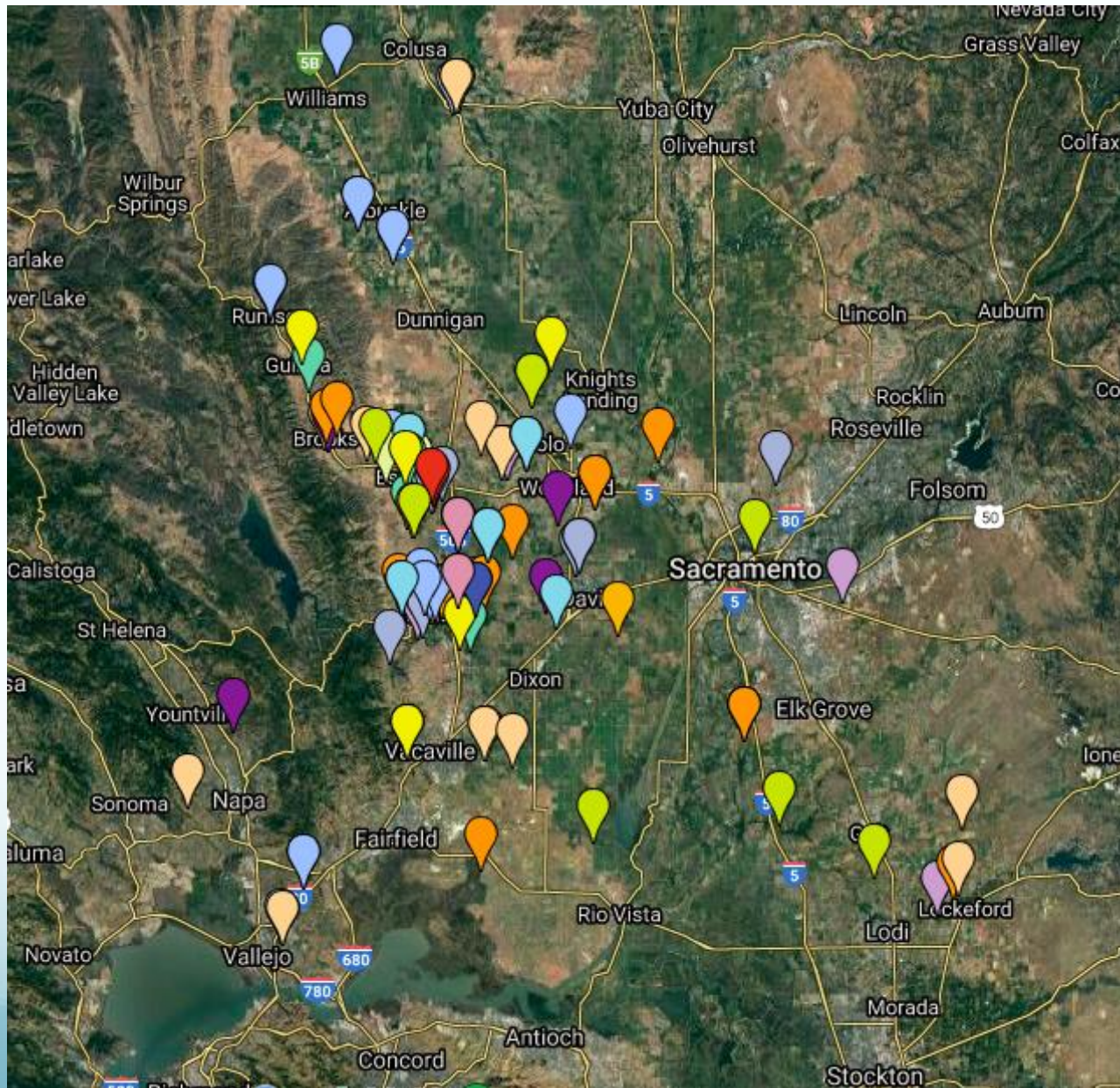
- SLEWS statewide : 2001-2020
 - 275 Projects
 - 8,275 students
 - 75,021 native trees, shrubs, and forbs planted
 - 332,967 native grass, sedge and rush plugs
 - 827 wildlife structures



SLEWS Project Locations

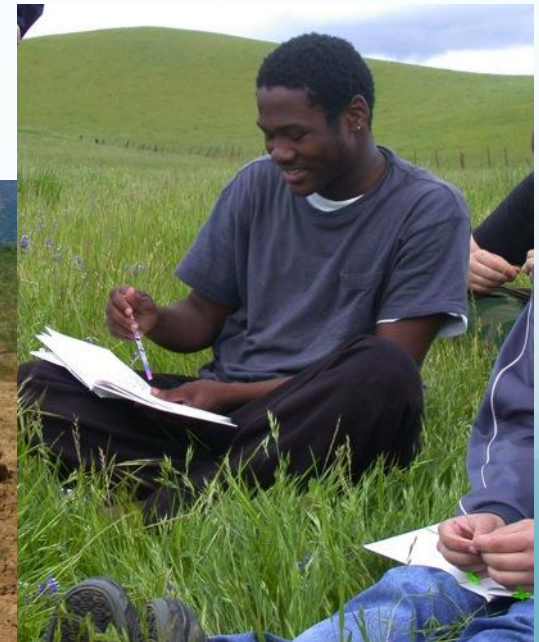


A satellite map of Northern California showing the locations of SLEWS projects. The map covers the area from Colusa in the north to Stockton in the south, and from the Sierra Nevada mountains in the west to the Sacramento-San Joaquin River Delta in the east. Major cities and towns labeled include Colusa, Yuba City, Olivehurst, Colfax, Nevada City, Grass Valley, Wilbur Springs, Dunnigan, Knights Landing, Rocklin, Roseville, Folsom, Sacramento, Elk Grove, Lodi, Morada, Stockton, Antioch, Concord, Vallejo, Fairfield, Vacaville, Dixon, Yountville, Napa, Sonoma, Novato, Richmond, Berkeley, Alameda, Fremont, and San Francisco. The map is overlaid with numerous colored pins (blue, orange, yellow, green, purple, pink, red) indicating project locations. The pins are concentrated in the Sacramento Valley, particularly around Sacramento, Yuba City, and the area between Colusa and Yuba City. There are also pins in the San Francisco Bay Area, particularly around the San Francisco Peninsula and the East Bay. The map shows major highways (Interstates 5, 80, 580, 680, 780, 805, 980) and local roads. The terrain is a mix of urban areas, agricultural land, and forested areas.



More than just “work”

- Teambuilding and Leadership
- Resource professional guest speakers
- Field connection to classroom learning
- Writing and Reflection
- Research projects



Typical Field Day Agenda



8:00am - CLBL staff and mentor arrival

8:15am - Site setup

8:30am - Partner meeting, review agenda

9:00am - Students arrive, breakfast

9:30am - Opening circle, names

9:45am - Ice breaker game

10:00am - Restoration demo

10:15am - Restoration Work

12:00pm - Lunch break

12:30pm - Learning activity

1:15pm - Reflection activity

1:45pm - Closing circle

2:00pm - Students depart

2:15pm - Partner debrief

SLEWS Project Site Selection

Ideal sites:

- Are close to (within 60 minutes of) CLBL Headquarters and participating school
- Have enough work for 3-5 field days
- Are focused on connecting habitat and creating biodiversity
- Have a variety of restoration-related tasks and experiences for students to keep them engaged
- Are accessible in all weather by bus
- Have a landowner who is interested in speaking to students and attending field days
- Have a plan for maintenance for long-term success
- Bonus points if the site is adjacent to previously restored areas, wild spaces, or agriculture

Cost of SLEWS

Cost of a 3-day SLEWS Project: **\$14,409** (\$4,803 per field day)

This includes:

- Project coordination, food, transportation, substitute teacher fees, port-a-potty, educational materials, gear and supplies (raingear, tools)

This does NOT include:

- Restoration project planning, restoration supplies (plants, irrigation, etc.)



Many restoration partners write us into grants to ensure SLEWS student participation.

Project Timeline



July/August/September: site visit, SLEWS site team meetings, schedule Field Days and backup dates for the year

Project Timeline



November/December: Field Day #1

Project Timeline



January/February: Field Day #2

Project Timeline



February/March: Field Day #3

SLEWS Program Coordinator

Contact:

Eva Dwyer

eva@landbasedlearning.org

707-364-2932 (mobile)

530-795-1520 (office)

40140 Best Ranch Rd, Woodland, CA 95776

