



PROTOCOL FOR CALIFORNIA DEPARTMENT OF FISH AND WILDLIFE HATCHERY ANADROMOUS FISH OR EGG REQUESTS FOR RESEARCH AND/OR EDUCATIONAL PURPOSES

California Department of Fish and Wildlife anadromous hatchery fish are raised with limited, dedicated funding. Fish and eggs allocated for research are those produced in excess of the mitigation requirement of each anadromous hatchery. For this reason, it is necessary to have all requests known prior to spawning to so that surpluses for research can be accommodated. Unforeseen circumstances (such as drought or low adult returns) may affect production at hatcheries and may compromise California Department of Fish and Wildlife's ability to supply requested fish/eggs.

To help California Department of Fish and Wildlife review and accommodate egg and fish requests for research and/or educational purposes, REQUESTS FOR ANADROMOUS SPECIES MUST BE SUBMITTED BY AUGUST 1st FOR THE FOLLOWING SPAWNING, INCUBATION, PRODUCTION AND RELEASE CYCLE. Requests for anadromous species received after August 1st will not be considered for the following spawning, incubation, production, and release cycle.

Requests for fish carcasses for educational purposes or raptor rehabilitation will be accepted for review after the August 1st deadline. Please allow at least 2 weeks for review of request for carcasses.

A formal request letter on your company, agency, or university letterhead is required and must include:

- A full proposal describing the proposed activity
 - Number of fish, eggs or fish products requested
 - Size or age
 - Species
 - Date(s) when fish, eggs or fish products are needed
 - Reason for request (i.e. intended use of requested fish or fish products)
 - Disposition of the fish, eggs, or fish materials after the termination of experiments or educational purposes
 - Location where the tests will be conducted
 - Description of potential for hatchery fish to interact with natural biota/ecosystems
 - Includes potential water discharge from aquaria or captive systems
 - Preferred hatchery source with explanation

- If *any* hatchery is acceptable, please indicate so
- A copy of the complete research proposal (as applicable) to describe the intended activity, methods, and anticipated results (data gathered)
 - Proposals for hatchery fish and fish products should identify the main intent of research and its relevance to fishery management issues
- A Scientific Collecting Permit will be required for non-state listed species with the potential to interact with natural biota/ecosystems. A CESA MOU is required for all state listed species with the potential to interact with natural biota/ecosystems.
 - Information on Scientific Collecting Permitting can be found at: <https://wildlife.ca.gov/Explore/Organization/FB/Permitting#476882307-hatchery-fish-or-egg-requests>
 - If applicable, include Scientific Collecting Permit number for the proposed activity.
- All other applicable permitting (e.g. Federal) will still be required
- Any other relevant information

California Department of Fish and Wildlife Fisheries Branch, Hatchery and Regional staff will review proposals after the August 1st deadline and will make research allocation decisions at one meeting. In addition to California Department of Fish and Wildlife review, the owner of the anadromous hatchery (if not owned California Department of Fish and Wildlife) will also be provided an opportunity to review and approve requests.

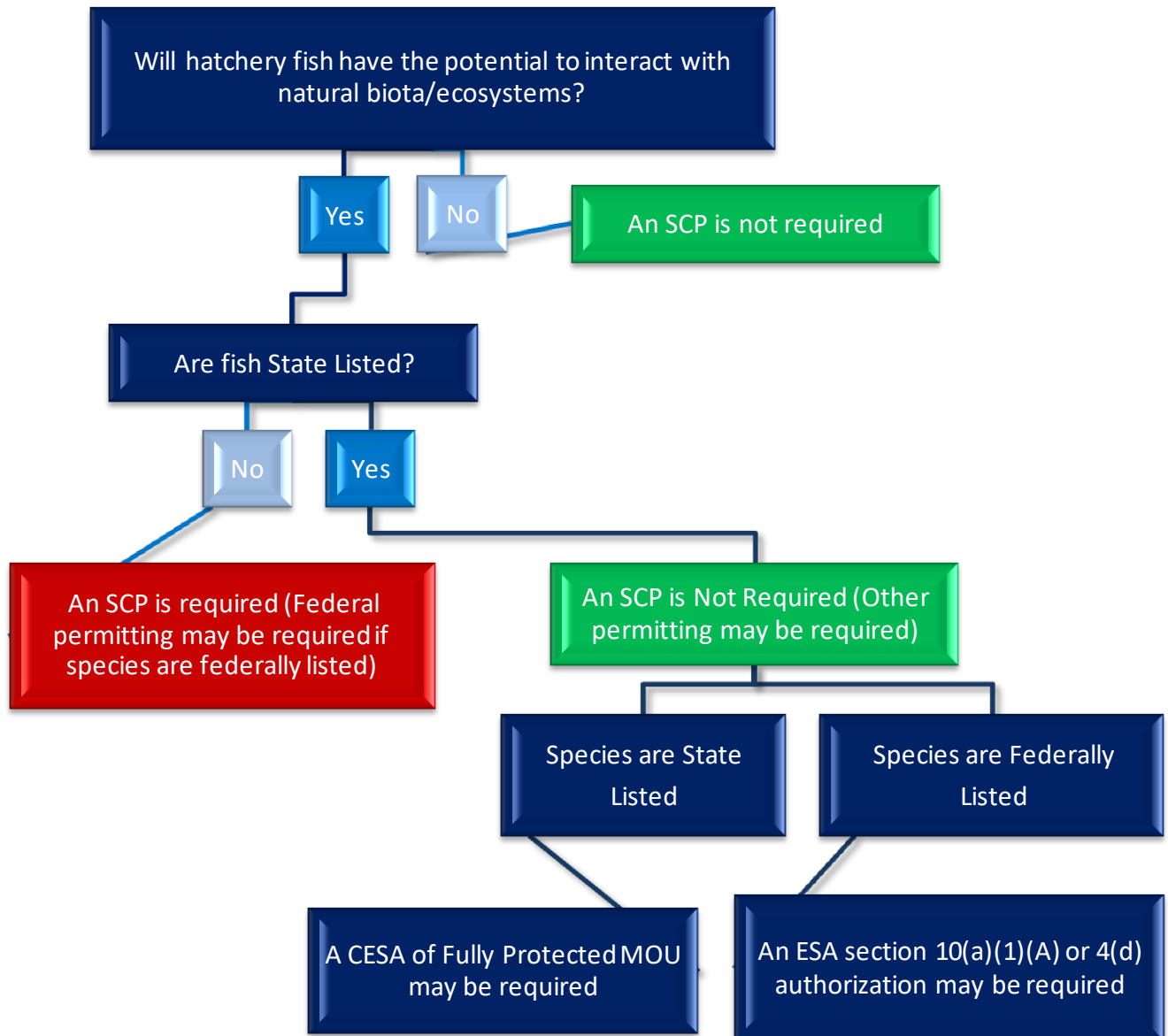
Following Department review of proposals, the Hatchery Coordinator will contact the requestor in writing to notify them of the decision to approve or deny the request.

Approved requests will require that researchers supply reports, data, and/or publications resulting from the conducted research to California Department of Fish and Wildlife for discretionary fishery management applications.

The request packet including proposal, summary of test results, and any publications or reports should be submitted (e-mailed preferred) to:

Frank Riley
Statewide Hatchery Coordinator
frank.riley@wildlife.ca.gov

SCPs for Take of Fish from the Hatchery



Hatchery Fish - Any fish produced and raised in captivity (F&GC 1800).

Natural Origin Fish – Any fish produced in the wild that is brought into the hatchery.