



PROTOCOL FOR CALIFORNIA DEPARTMENT OF FISH AND WILDLIFE HATCHERY TROUT or INLAND FISH OR FISH EGG REQUESTS

Trout and Inland California Department of Fish and Wildlife hatchery fish are raised with limited, dedicated funding. Commercial sources of trout are available and must be considered for the use of for-profit entities, or for research projects with dedicated funding. For a list of registered private aquaculturists in California see:
<https://www.wildlife.ca.gov/Aquaculture>

Requests for California Department of Fish and Wildlife hatchery trout will be considered for research or educational purposes. Valid requests for California Department of Fish and Wildlife hatchery trout will be considered year round.

A formal Request letter of request on your company, agency or university letterhead is required and must include

- Number of fish, eggs or fish products requested
- Size or age
- Species
- Date(s) when fish, eggs or fish products are needed.
- Reason for request (i.e. intended use of requested fish or fish products)
- Disposition of the fish, eggs or fish materials after the termination of experiments
- Location where the tests will be conducted.
- Preferred hatchery source with explanation
 - If *any* hatchery is acceptable, please indicate so
- A copy of the complete research proposal (as applicable) to describe the intended activity, methods, and anticipated results (data gathered)
 - Proposals for hatchery fish and fish products should identify the main intent of research and its relevance to fishery management issues or the benefit of the proposed public education.
- A Scientific Collecting Permit will be required for non-state listed species with the potential to interact with natural biota/ecosystems. A CESA MOU is required for all state listed species with the potential to interact with natural biota/ecosystems.
 - If applicable, include Scientific Collecting Permit number for the proposed activity.
- All other applicable permitting (e.g. Federal) will still be required
- Any other relevant information

California Department of Fish and Wildlife Fisheries Branch, Hatchery and Regional staff will review proposals as they are received. All requests with study proposals (as applicable) are to be sent to the Statewide Hatchery Coordinator (farhat.bajjaliya@wildlife.ca.gov).

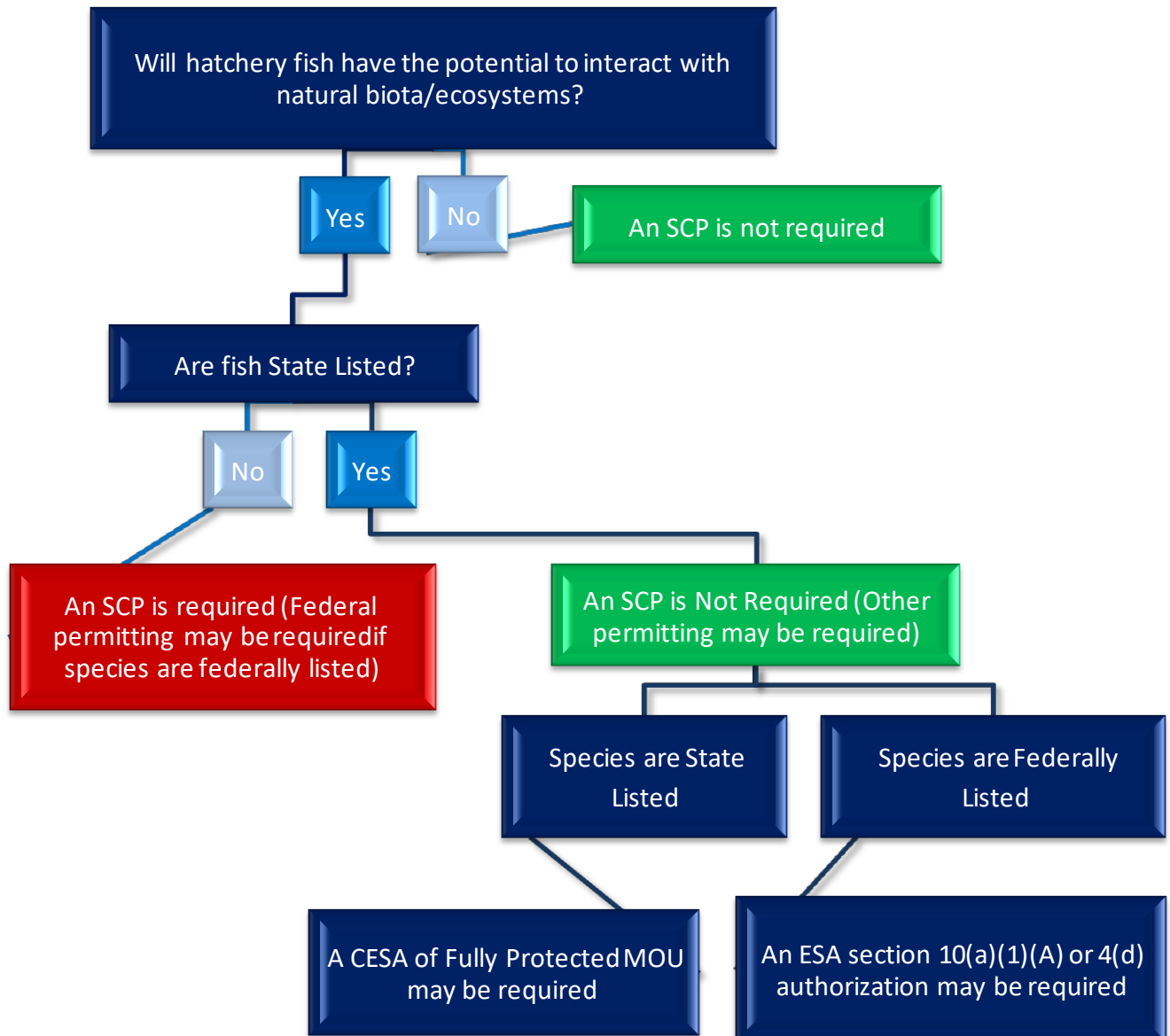
Following Department review of proposals, the Hatchery Coordinator will write a letter to the requestor to notify them of the decision to approve or denying the request.

Approved requests will require that researchers supply reports, data, and/or publications resulting from the conducted research California Department of Fish and Wildlife for discretionary fishery management applications.

The request packet including proposal, summary of test results, and any publications or reports should be submitted (e-mailed preferred) to:

[Frank Riley](#)
[Statewide Hatchery Coordinator](#)
frank.riley@wildlife.ca.gov

SCPs for Take of Fish from the Hatchery



Hatchery Fish - Any fish produced and raised in captivity (F&GC 1800).

Natural Origin Fish – Any fish produced in the wild that is brought into the hatchery.