

State of California
Department of Fish and Wildlife

Memorandum

Date: November 9, 2020

To: Sarah Mussulman
Senior Environmental Scientist; Supervisor
Department of Fish and Wildlife
North Central Region
1701 Nimbus Road, Suite A
Rancho Cordova, CA 95670

Cc: CDFW North Central Region Fish Files

From: Mitch Lockhart; Environmental Scientist
Luc Mitchell; Scientific Aide
Department of Fish and Wildlife
1701 Nimbus Road, Suite A
Rancho Cordova, CA 95670

Subject: Pre-Stocking Evaluation at View Lake (Grouse Ridge), Nevada County

View Lake (Lake ID: 12688) is in Nevada County north of Emigrant Gap on Interstate 80 at an elevation of 6,502 feet above sea level (**Figure 1** and **2**). The lake is accessible by foot beginning at a trailhead at Lindsey Lake Campground. View Lake flows into Upper Lindsey Lake which is managed by Pacific Gas & Electric Company (PG&E) as part of the Drum-Spaulding Hydroelectric Project (FERC# 2310). The California Department of Fish and Wildlife (CDFW) has stocked View Lake with Rainbow Trout (*Oncorhynchus mykiss*; RT) since 1971, with the most recent stocking in 2018 (**Table 1**).

To assess the current status of the sport fishery at View Lake and determine if continued fish plants are warranted, three CDFW Scientific Aides surveyed View Lake on June 9 and 10, 2020. A monofilament

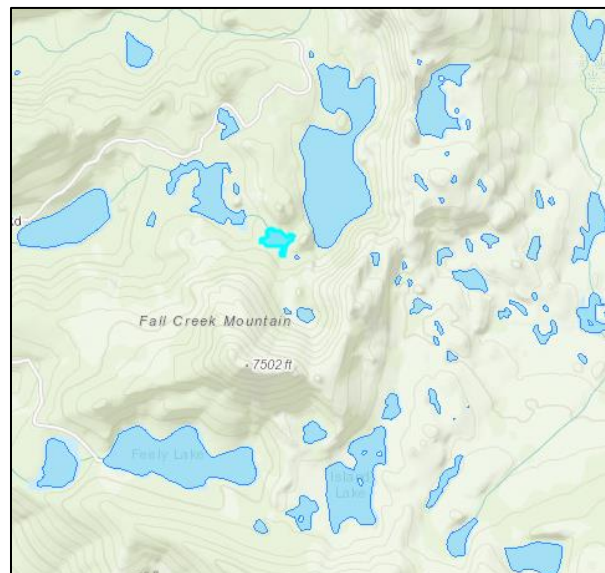


Figure 1. Close-up overview map of Grouse Ridge Non-Motorized Area, Nevada County. View Lake is in cyan (CDFW BIOS Viewer, retrieved August 25, 2020).

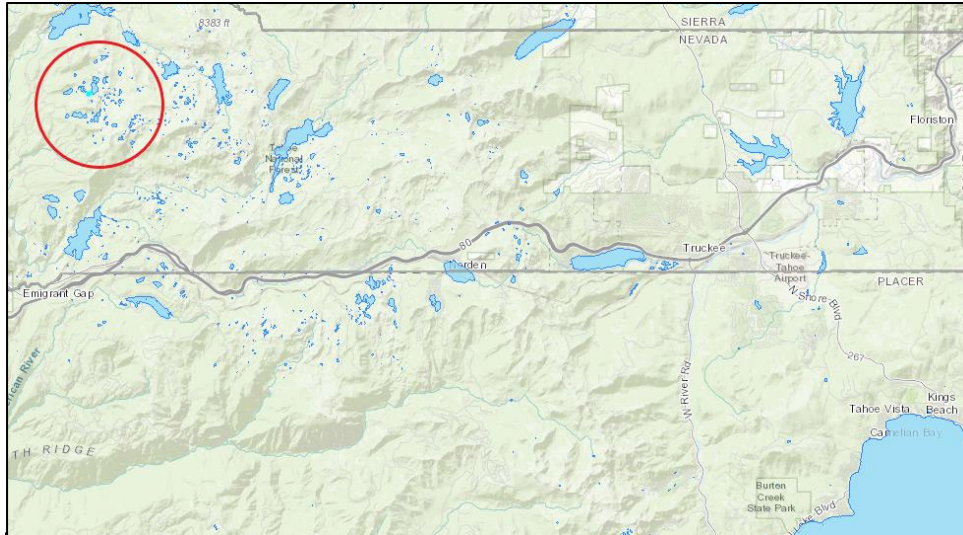


Figure 2. Overview map of Grouse Ridge Non-Motorized Area, Nevada Co. (red circle), in relation to Lake Tahoe and Truckee, California. View Lake is highlighted in cyan (CDFW BIOS Viewer, retrieved. 8.25.20).

gill net was set overnight (June 9–10, 2020) for a survey effort of 12 hours, during which eight Brook Trout (*Salvelinus fontinalis*; BK) were captured (**Table 2, Figure 3**).

Scientific Aides conducted a visual encounter survey (VES) of View Lake, searching for diurnal herpetofauna such as the Federally Endangered Sierra Nevada Yellow-legged Frog (*Rana sierrae*, SNYLF), on June 9, 2020. During the survey, the air temperature was 21 degrees Celsius and the sky was clear. A single adult garter snake (*Thamnophis* spp.; THSP) was observed during the 29-minute survey.

Table 1. CDFW Stocking History of View Lake, from 2009-2018

Year	Species	Number of Fish Planted	Size
2009	RT	1,200	Fingerling
2011	RT	1,500	Fingerling
2012	RT	1,500	Fingerling
2013	RT	1,500	Fingerling
2017	RT	1,500	Fingerling
2018	RT	1,500	Fingerling

The gill net data show View Lake supports a BK sport-fishery. CDFW last planted BK at View Lake in 1969, thus the BK population at View Lake is self-sustaining and wild. Adult and juvenile life stages were represented in the catch and individual fish were of good body condition (**Figure 3**), suggesting the population is healthy and will continue to persist. Despite the presence of a quality BK fishery, View Lake is not a backcountry angling destination. The lake is small, off-trail, and has a heavily vegetated shoreline not well suited for angling (**Figure 4**).



Figure 3. Photograph of Brook Trout captured in a gill net at View Lake, Nevada County (CDFW, June 10, 2020).

CDFW has planted View Lake with RT dating back to 1971 and most recently in 2018 (**Table 1**). No RT were captured during the 2020 survey. If still extant in View Lake, RT are likely low density and may not persist without continued plants. Given that View Lake is likely an infrequently visited backpacking fishing destination, aerial plants are not recommended.

In summary, CDFW will no longer allot RT fingerlings for View Lake and will manage the lake as a self-sustaining BK fishery. CDFW will schedule follow-up monitoring surveys at View Lake two to four years after cessation of aerial plants to determine if the wild BK fishery continues to persist with individuals in good body condition.

Table 2. Length, weight, sex, and egg stage of fish captured during a gill net survey at View Lake, Nevada County, on June 09, 2020.

<i>Species</i>	<i>Length (mm)</i>	<i>Weight (g)</i>	<i>Sex</i>	<i>Egg Stage</i>
BK	170	51	Unknown	-
BK	156	39	Unknown	-
BK	191	80	Unknown	-
BK	296	310	Female	Early
BK	302	345	Male	-
BK	311	370	Male	-
BK	326	410	Male	-
BK	356	410	Female	Early



Figure 4. Overview panoramic photograph of View Lake, Nevada County facing north-east (CDFW, June 09, 2020).