



Northern Spotted Owl Interagency Working Group (NSOIWG) Update



PRESENTER: SUE SNIADO

CALIFORNIA DEPARTMENT OF FISH AND WILDLIFE

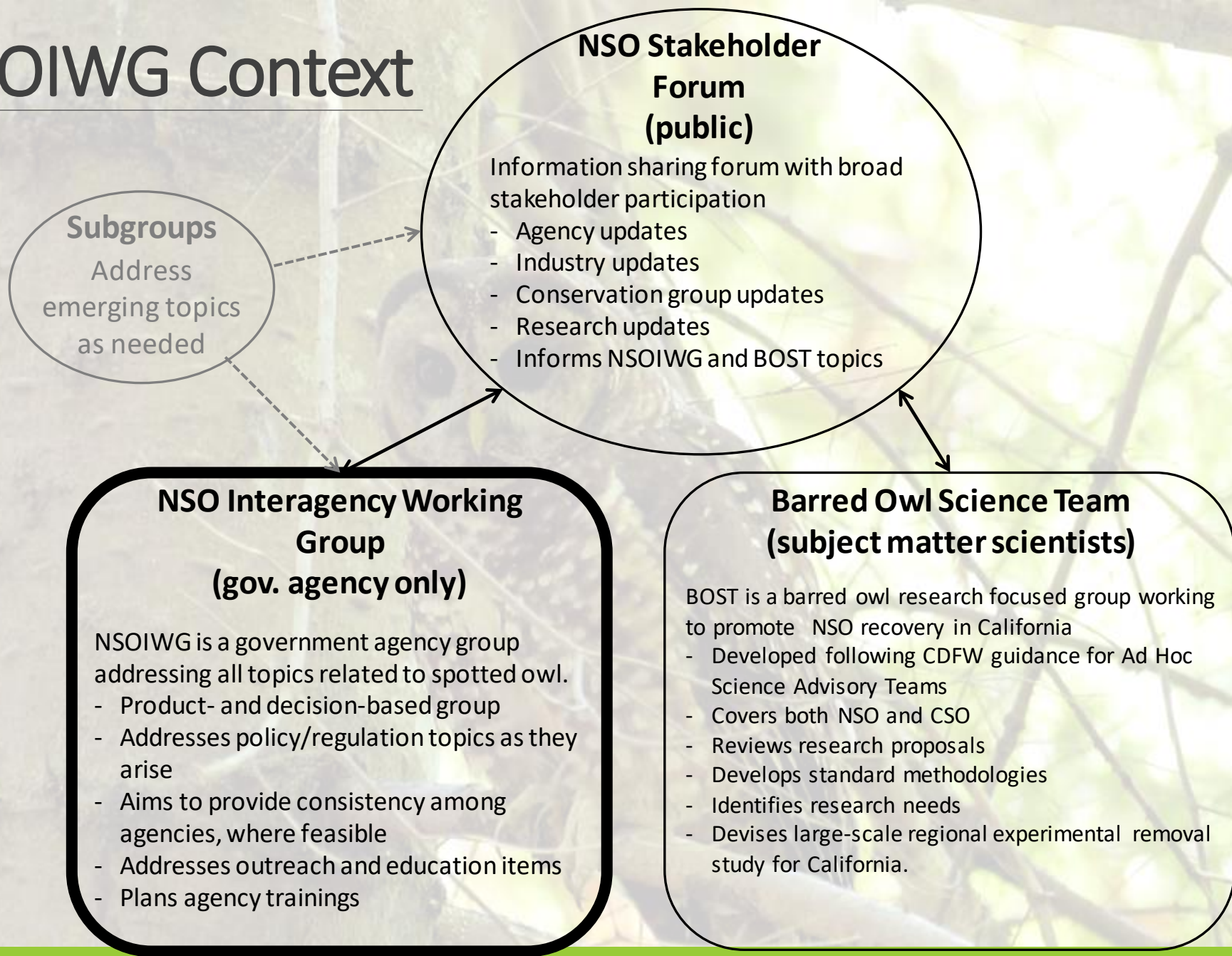
TIMBER CONSERVATION PROGRAM

FEBRUARY 25, 2021

NSOIWG Purpose

Promote recovery of the NSO by facilitating interagency understanding and communications

NSOIWG Context



NSOIWG Web Page



California Department of
Fish and Wildlife



Home



Fishing



Hunting



Licensing



Conservation



Learning

Northern Spotted Owl Interagency Working Group (NSOIWG)

The Northern Spotted Owl Interagency Working Group (NSOIWG) was officially established in 2016. The group first met as a response to public concerns related to Northern Spotted Owl on private timberland. Staff of the U.S. Fish and Wildlife Service (USFWS), California Department of Fish and Wildlife (CDFW), and California Department of Forestry and Fire Protection (CALFIRE) are members of the group and meet regularly throughout the year. The goal of the NSOIWG is to promote recovery of the Northern Spotted Owl in California by facilitating interagency understanding and communications.

Meeting topics include

- the Spotted Owl Observations Database
- agency roles
- post-fire issues
- training needs
- current science
- management and regulatory challenges
- outreach

For further background see the [NSOIWG Purpose Statement \(PDF\)](#) and the [NSOIWG Update at the 2018 Stakeholder Forum meeting \(PDF\)](#).

Meeting Agenda

- 2019
- 2018
- 2017
- 2016

Survey Protocol

The US Fish and Wildlife Service created a consistent survey protocol for Northern Spotted Owls in 1992, revised in 2012. This survey protocol provides a scientifically vetted method for locating owls prior to management activities.

- [Protocol for Surveying Proposed Management Activities that May Impact Northern Spotted Owls \(PDF\)](#) (US Fish Wildlife Service, 2012)



Data Submission

Spotted owl and barred owl data can be emailed directly to owlobs@wildlife.ca.gov. Data entry templates are available upon request.

[CNDDDB Online Field Survey Form](#)

The Spotted Owl Observations Database (SPOWDB) now has a [management framework \(PDF\)](#). This document provides background information about the SPOWDB and the process for receiving and symbolizing spotted owl data.

Related Information

- [Arcata Fish and Wildlife Service, Northern Spotted Owl](#)
- [Yreka Fish and Wildlife Service, Northern Spotted Owl](#)
- [Northern Spotted Owl Take Avoidance Analysis and Guidance for Coast Redwood Region \(Attachment A\) and for Interior California \(Attachment B\) \(PDF\)](#)
- [Status Review of the Northern Spotted Owl, CDFW 2016 \(PDF\)](#)
- [Long-term Rangewide Demography Study, Duggen et al. 2016 \(PDF\)](#)

Activities

- Met remotely to discuss current topics and issues
- Coordinated with respective agency managers and executive team on next steps
- Worked internally to increase interagency communications and refine roles/responsibilities.
- Prioritized “case study” topics related to plan review
- Started conversations regarding the impact of wildfires to NSO (and other forest species)

Future Actions

- Produce additional clarification to the public regarding roles and responsibilities
- Work toward agency calibration on plan review topics
- Explore funding options (e.g. wildfire impacts)
- Coordinate on database topics
- Organize trainings and workshops
- Help inform possible regulation changes

Past and Current Products

NSOIWG Webpage	Public Training
Post-fire guidance	EMC Proposal
Clarify Roles/Responsibility	Literature compilation
Stakeholder Outreach	Internal workshops
Clarify Database Processes	Review of agency products
Assess FPRs related to NSO	Agency plan review calibration

Contacts

NSOIWG POCs

- CDFW: Carie Battistone
carie.battistone@wildlife.ca.gov
- CAL FIRE: Stacy Stanish
Anastasia.Stanish@fire.ca.gov
- USFWS: Jennifer Jones
jennifer_jones@fws.gov

A spotted owl is perched on a tree branch, looking directly at the camera. The owl has a brown and white mottled pattern on its chest and wings, and a dark brown face with large, dark eyes. The background is a dense forest with green foliage and thin tree branches. The owl is positioned in the center-right of the frame, with a thick tree trunk on the left side.

Questions?