

CALIFORNIA

# SUPPLEMENTAL

## SPORT FISHING REGULATIONS



# 2021–2022

Compiled July 1, 2021; See section headers  
for specific regulation effective dates

# Anadromous Fish Identification

## Coastal Rainbow Trout/ Steelhead



White gums and tongue

## Chinook Salmon



Base of teeth all black

## Coho Salmon



Narrow light gray band  
at base of bottom teeth

# 2021–2022

## Supplemental Sport Fishing Regulations

Contains in-season changes to freshwater sport fishing regulations for 2021–2022.

### contact

#### wildlife.ca.gov

##### Headquarters

PO Box 944209, Sacramento, CA 94244  
(916) 445-0411 • [Director@wildlife.ca.gov](mailto:Director@wildlife.ca.gov)

##### License and Revenue Branch

PO Box 944209, Sacramento, CA 94244  
(916) 928-5805 • [LRB@wildlife.ca.gov](mailto:LRB@wildlife.ca.gov)

##### State of California

Governor Gavin Newsom

##### Natural Resources Agency

Secretary Wade Crowfoot

##### Department of Fish and Wildlife

Director Charlton H. Bonham

##### Fish and Game Commission

Peter Silva, President

Jamul

Samantha Murray, Vice President

Del Mar

Erik Sklar, Member

St. Helena

Jacque Hostler-Carmesin, Member

McKinleyville

Erika Zavaleta, Member

Santa Cruz

Melissa Miller-Henson, Executive Director

Sacramento

Alternate communication formats are available upon request. If reasonable accommodation is needed call CDFW at (916) 322-8911. The California Relay Service for the deaf or hearing-impaired can be utilized from TDD phones at (800) 735-2929.

Products or services provided by advertisers are not promoted or endorsed by the Department of Fish and Wildlife.

### This is a Supplement

The regulations in this supplement supersede regulations listed in the 2021–2022 Freshwater and/or Ocean Sport Fishing regulation booklets.

NOTE: This supplement does not contain a complete set of fishing regulations. Refer to your copy of the 2021–2022 Freshwater and/or Ocean Sport Fishing regulation booklet for regulations not included here.

On the cover: Top: Klamath River mouth, CDFW photo. Bottom: wild steelhead, Monterey Co., Matthew M. photo

### regional offices

#### 1 - NORTHERN REGION

Serving Del Norte, Humboldt, Lassen, Mendocino, Modoc, Shasta, Siskiyou, Tehama and Trinity counties

601 Locust Street, Redding 96001 • (530) 225-2300

[AskRegion1@wildlife.ca.gov](mailto:AskRegion1@wildlife.ca.gov)

##### Eureka Field Office

619 Second Street Eureka 95501 • (707) 445-6493

#### 2 - NORTH CENTRAL REGION

Serving Alpine, Amador, Butte, Calaveras, Colusa, El Dorado, Glenn, Lake, Nevada, Placer, Plumas, Sacramento, San Joaquin, Sierra, Sutter, Yolo and Yuba counties

1701 Nimbus Road, Rancho Cordova 95670 • (916) 358-2900

[R2Info@wildlife.ca.gov](mailto:R2Info@wildlife.ca.gov)

#### 3 - BAY DELTA REGION

Serving Alameda, Contra Costa, Marin, Napa, Sacramento, San Mateo, Santa Clara, Santa Cruz, San Francisco, San Joaquin, Solano, Sonoma and Yolo counties

2825 Cordelia Road, Ste. 100, Fairfield 94534 • (707) 428-2002

[AskBDR@wildlife.ca.gov](mailto:AskBDR@wildlife.ca.gov)

##### Stockton Field Office

2109 Arch Airport Road, Suite 100, Stockton 95206 • (209) 234-3420

#### 4 - CENTRAL REGION

Serving Fresno, Kern, Kings, Madera, Mariposa, Merced, Monterey, San Benito, San Luis Obispo, Stanislaus, Tulare and Tuolumne counties

1234 E. Shaw Avenue, Fresno 93710 • (559) 243-4005

[Reg4Assistant@wildlife.ca.gov](mailto:Reg4Assistant@wildlife.ca.gov)

#### 5 - SOUTH COAST REGION

Serving Los Angeles, Orange, San Diego, Santa Barbara and Ventura counties

3883 Ruffin Road, San Diego 92123 • (858) 467-4201

[AskR5@wildlife.ca.gov](mailto:AskR5@wildlife.ca.gov)

##### Los Alamitos Field Office

4665 Lampson Avenue, Suite C, Los Alamitos 90720

(562) 342-7100

#### 6 - INLAND DESERTS REGION

Serving Imperial, Inyo, Mono, Riverside and San Bernardino counties

3602 Inland Empire Blvd., Ste. C-220, Ontario 91764

(909) 484-0167

[AskRegion6@wildlife.ca.gov](mailto:AskRegion6@wildlife.ca.gov)

**Licenses are not sold at this office.**

#### 7 - MARINE REGION

Serving the entire California coast, from border to border and three nautical miles out to sea.

20 Lower Ragsdale Drive, Ste. 100, Monterey 93940

(831) 649-2870

[AskMarine@wildlife.ca.gov](mailto:AskMarine@wildlife.ca.gov)

# TABLE OF CONTENTS

Unlawful Actions.....	5
What's New Since March 2021 - Anadromous Updates.....	7
Ocean Sport Fishing Updates (summary).....	8
Central Valley regulations (starts on page).....	14
Klamath River Basin Fall-Run Chinook.....	27
Klamath River Basin Spring-Run Chinook.....	31

## ONLINE HARVEST REPORTING

Now, it is easier than ever to report your harvest:

- Report your harvest online using the Online License Service at [wildlife.ca.gov/reportcards](http://wildlife.ca.gov/reportcards); or
- Return your report card via mail to the address printed on the report card.

### **Important information—read before you report online**

- Accurate and complete data is required. If you report online, all entries on the report card must be entered in the electronic form, including sport fishing reports of activity where no catches were made.
- Submission of report card data online must be completed within 20 minutes to avoid a system time out.
- Sport fishing report cards may be reported online only after the last day of the report card's validity.
- If you report online, you do not need to mail in your report card. You will be issued a report confirmation number. After reporting, please retain your report card for 90 days for survey purposes and write your report confirmation number on it. Once a report card has been reported, it may no longer be used in the field.

## STAY CONNECTED TO CDFW

Having your email address and mobile number will enable the CDFW to send you information you can use, such as license renewal and courtesy report card deadline reminders, and California fishing information. When purchasing a license from a license agent or when you log in to the Online License Service, update your communication preferences and provide your email address and mobile number. Fish and Game Code, Section 1050.6, and California Government Code, Section 11015.5, prohibit the CDFW from selling or sharing your personal information with any third party.

## FREE FISHING DAYS!

*July 3<sup>rd</sup> and September 4<sup>th</sup>, 2021*

On these days only in 2021, ALL regulations apply and report cards are required—but NO license is required for sport fishing.

# IT IS UNLAWFUL TO DO THE FOLLOWING

- Fish without a valid fishing license if you are 16 years of age or older (FGC 7145); exceptions, fishing from public piers in ocean or bay waters;
- Fail to return a report card by the deadline printed on the report card. Reporting harvest online at [wildlife.ca.gov/reportcards](http://wildlife.ca.gov/reportcards) satisfies the return requirement (CCR T-14, Section 1.74);
- Take or possess fish taken illegally (FGC 2000 and 2002);
- Transfer licenses, tags, validations, permits, applications or reservations to another person (FGC 1052);
- Use or possess any license, tag, validation, permit, application or reservation not lawfully issued to the user (FGC 1052);
- Alter, mutilate, deface, duplicate or counterfeit any license, tag, validation, permit, application or reservation (FGC 1052);
- Fish without the required report card on a free-fishing day (CCR T14 Section 1.74);
- Sell fish taken with a sport fishing license (FGC 7121);
- Cause the deterioration or waste of any fish taken in the waters of this state (CCR T14 Section 1.87);
- Use explosives in state waters inhabited by fish (FGC 5500);
- Use or possess any net in state waters except as is authorized (FGC 8603);
- Disturb legal traps set by another person (FGC 9002);
- Litter into or within 150 feet of state waters (FGC 5652);
- Possess fish where the size or species cannot be determined (FGC 5508 and 5509);
- Fail to exhibit on demand all licenses, tags, validations, permits, applications or reservation to any peace officer or authorized CDFW employee (FGC 2012);
- Fail to exhibit, on demand, all fish, mollusks, crustaceans, amphibians and reptiles and any device or apparatus capable of being used to take them, to any peace officer or authorized CDFW employee (FGC 2012); or
- Prohibit a warden from inspection of any boat, market or receptacle where fish may be found (FGC 1006).



## **STOP AQUATIC HITCHHIKERS!™**

Prevent the transport of nuisance species.

Clean all recreational equipment.

[www.stopaquatichitchhikers.org](http://www.stopaquatichitchhikers.org)

[www.wildlife.ca.gov/Conservation/Invasives](http://www.wildlife.ca.gov/Conservation/Invasives)



# KEEP UP WITH IN-SEASON REGULATIONS CHANGES

## *Quick Steps to Finding the Correct Fishing Regulation*

State sport fishing regulations may change during the year. Before engaging in any sport fishing, please access one of the following sources for up-to-date information:

1. Check the Department's regulations page at [wildlife.ca.gov/regulations](http://wildlife.ca.gov/regulations) for any new changes,
2. Check the Department's News Room at [wildlife.ca.gov/news](http://wildlife.ca.gov/news) for any new announcements, or
3. Call the Department office nearest your fishing location (see page 3) for the latest information before heading out on a fishing trip.

### ONLINE FISHING GUIDE

**California is a great place to fish!**  
**An online fishing guide is available to help plan your fishing trips.**

Use the guide to find:

- Fish planting information
- Historically good fishing locations
- License agents
- Boating facilities
- Marine Protected Areas
- Quagga mussel-infested waters

[www.wildlife.ca.gov/Fishing/Guide](http://www.wildlife.ca.gov/Fishing/Guide)

A mobile guide is available for smart phones at [www.dfg.gov/mobile](http://www.dfg.gov/mobile)

## LIKE US on Facebook

[facebook.com/  
CaliforniaDFW](https://facebook.com/CaliforniaDFW)

California Department of Fish and Wildlife

### R3H3 VIRTUAL SEMINAR SERIES

**Join us at our upcoming  
harvest huddle hours**

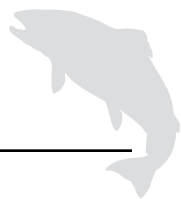
The Harvest Huddle Hour (R3H3) is a live virtual seminar series for beginning adult audiences. The informal huddles are intended to increase knowledge and confidence around skillsets required to harvest wild food in California in a fun and approachable way. Participants are given an opportunity to ask questions and engage with presenters, who are subject matter experts.

Participation is free and open to anyone, but seating is limited and requires registration. Individuals wishing to sign up for any future topics should visit the R3 calendar located on the main part of the R3 web page and follow the registration link in the event listing.

Visit [wildlife.ca.gov/R3](http://wildlife.ca.gov/R3) to learn more and watch our past R3H3 sessions.



# WHAT'S NEW SINCE MARCH 2021?



## *Anadromous Regulations Featured*

Following the simplification of inland sport fishing regulations (effective March 1, 2021), the 2021-2022 Freshwater Sport Fishing booklet features two sections of Title 14, CCR listing the angling seasons (closures), bag and possession limits, size limits, and gear restrictions alphabetically by the name of the inland water:

- Section 7.40 – Special regulations for **Anadromous** inland waters\* for hatchery trout, hatchery steelhead, and salmon. This booklet features the regulations for the full list of Anadromous waters.
- Section 7.50 – Special regulations for Non-Anadromous inland waters for trout

### *Updated Central Valley sport fishing regulations*

*May 2021 - Fish and Game Commission aligned with 2021 federal salmon regulations;  
planned effective date before or on July 16, 2021*

- Subsection 7.40(b)(4) – American River, Subsection 7.40(b)(66) – Mokelumne River, Subsection 7.40(b)(80) – Sacramento River: same Chinook Salmon season, bag & possession limits as 2020 (bag limit of 2 and a possession limit of 4).
- Subsection 7.40(b)(43) – Feather River: Decrease the Chinook Salmon bag and possession limits from 2020 from a bag limit of 3 and a possession limit of 6 to a bag limit of 2 and a possession limit of 4.

### *Updated Lower Klamath River Basin sport fishing regulations (Fall-Run)*

*May 2021 - Fish and Game Commission aligned with 2021 federal salmon regulations;  
planned effective date before or on August 15, 2021*

- Subsection 7.40(b)(50) – Maintain the 2020 bag limit of 2 Chinook Salmon of which no more than 1 fish may be over 23" total length (TL) until the subquota is met, then 0 fish over 23" TL.
- Maintain the 2020 possession limit of 6 Chinook Salmon of which no more than 3 fish may be over than 23" TL when the take of adult fish is allowed.
- Maintain the same season dates as 2020 (Klamath River: August 15 – December 31, Trinity River: September 1 – December 31).

### *Updated Upper Klamath Trinity Spring Chinook Salmon Status*

The Fish and Game Commission voted in June 2021 to list Upper Klamath-Trinity River spring Chinook Salmon as threatened under the California Endangered Species Act, but the spring Chinook Salmon "Special Order" sport fishing regulation listed in 7.40(b)(51) remains unchanged until further regulatory action is taken, and the season opens on July 1, 2021.

Anglers may monitor the quota status of open and closed sections of the Klamath and Trinity rivers by calling the **Klamath information hotline at (800) 564-6479**.

Regulatory language highlighted in grey text throughout the above listed sections signifies regulatory changes that have occurred since the publication of the 2021-2022 Freshwater Sport Fishing regulations booklet. The Supplement may contain any other pertinent regulation updates since the publication of the Freshwater booklet. Anglers are advised to check the CDFW website at <https://wildlife.ca.gov/Regulations> for a summary of changes as well as the most up-to-date regulations prior to each fishing trip.

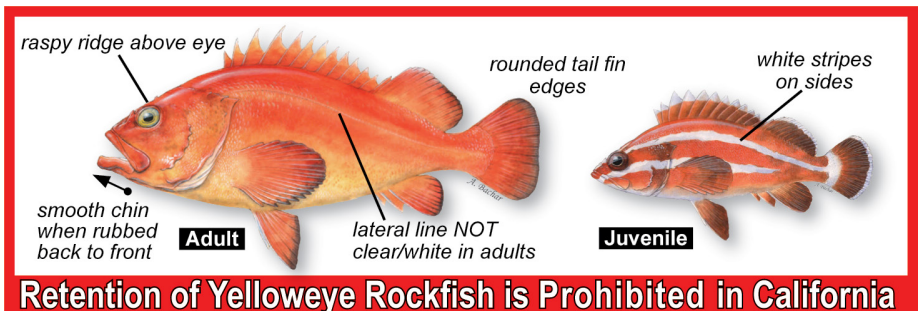
\*Anadromous waters means inland waters that are accessible to fish migrating from the ocean (Section 1.04, Title 14, CCR).

# Ocean Sport Fishing Updates

For changes to ocean fishing regulations please check the following page prior to each fishing trip: <https://wildlife.ca.gov/Fishing/Ocean/Regulations/Inseason#summary>  
[Map of Ocean Sportfishing Regulations \(mobile-friendly\)](#)

.....

CDFW reminds anglers to also review the full set of regulations at <https://wildlife.ca.gov/Fishing/Ocean/Regulations/Sport-Fishing>





## **CDFW Transitioning to Electronic Hunting and Fishing Regulations Booklets in 2021**

As part of a broader effort to go paperless, the California Department of Fish and Wildlife (CDFW) is transitioning to a digital format for its 2021 hunting and fishing regulations booklets. Booklets will no longer be printed and shipped to license agents or customers, but electronic versions of the booklets will continue to be available online.

The transition to paperless regulations booklets follows a two-year effort to reduce the number of hard copy booklets printed and shipped to license agents and is consistent with the governor's directive to reduce paper usage.

As in previous years, digital booklets are available at <https://wildlife.ca.gov/Regulations> and can be downloaded as PDFs to your computer, cellular phone, or other electronic device. Hunters and anglers are encouraged to download the digital booklets to their mobile devices and familiarize themselves with the digital format prior to hunting and/or fishing trips.

# ***REGS ON THE GO...***

Did you know you can now download fishing regulations to your smartphone or other device? By utilizing iBooks on Apple devices or your favorite book reader on the Android platform you can download the freshwater and ocean sport fishing regulations for reference at any time. These and other regulations can be found at [www.wildlife.ca.gov/regulations/](http://www.wildlife.ca.gov/regulations/).

## **Help Wildlife Officers Put an End to Poaching *Report Poachers and Polluters to CalTIP!***

**1-888-334-CalTIP**  
(1 - 888 - 334 - 2258)

**Call 911**

**Text 847411**  
Begin message with "Caltip"  
followed by the details

**CalTIP App**  
free via Google Play Store  
and iTunes App Store



*Californians Turn In Poachers*

Alternate communication formats are available upon request. If reasonable accommodation is needed call CDFW at (916) 322-8911. The California Relay Service for the deaf or hearing-impaired can be utilized from TDD phones at (800) 735-2929.

# 2021 FRESHWATER SPORT FISHING LICENSE FEES

*Purchase Sport Fishing Licenses and Submit Harvest Information Online*

You can purchase California sport fishing licenses, report cards and validations online at [wildlife.ca.gov/licensing/online-sales](https://wildlife.ca.gov/licensing/online-sales). In addition, anglers can submit report card information online. Report cards provide important harvest data critical to helping fishery scientists better manage these fishing programs. Online report card submission makes reporting faster and easier. By providing harvest details more quickly, fishery managers can more promptly put the information to use. Standard mail reporting is still available and can be done through the address printed on the report card. To report online, go to CDFW's harvest reporting site at [wildlife.ca.gov/reportcards](https://wildlife.ca.gov/reportcards). The regulatory deadline to report harvest information is January 31 each year, even if anglers were unsuccessful or did not fish.

## ANNUAL LICENSES

Resident Sport Fishing License .....	\$52.66
Non-Resident Sport Fishing License .....	\$142.05

## SHORT-TERM LICENSES

One-Day Sport Fishing License (resident or nonresident) .....	\$17.02
Two-Day Sport Fishing License* (resident or nonresident) .....	\$26.49
Ten-Day Non-Resident Sport Fishing License** .....	\$52.66

\*Valid for two consecutive calendar days.

\*\*Valid for ten consecutive calendar days.

## VALIDATIONS

Second-Rod Validation .....	\$16.46
-----------------------------	---------

## REPORT CARDS

North Coast Salmon Report Card (all waters of Klamath-Trinity System and Smith River) .....	\$7.30
Steelhead Report Card .....	\$8.13
Sturgeon Fishing Report Card .....	\$9.21

## DUPLICATE FEES

Sport Fishing License (Annual) .....	\$11.62
Second-Rod Validation .....	\$3.24
Sturgeon Fishing Replacement Card (CDFW license sales offices only) .....	\$16.48

## LIFETIME SPORT FISHING LICENSES

Age 9 years or younger .....	\$579.25
Age 10 to 39 years .....	\$946.75
Age 40 to 61 years .....	\$853.00
Age 62 years or older .....	\$579.25

Additional Lifetime Fishing Privileges (includes: Second-Rod Validation, Ocean Enhancement Validation, North Coast Salmon Report Card and Steelhead Report Card) .....	\$391.50
--	----------

*Most fees include 5% license agent handling fee and 3% nonrefundable application fee.*

# 2021 OCEAN SPORT FISHING LICENSE FEES



## CDFW Offices No Longer Accept Cash

CDFW does not accept cash at the License and Revenue Branch or regional license offices. Check, money orders, or any debit or credit card with the Visa or Mastercard logo are accepted. Cash transactions are available for all items sold at authorized local sales agents. Search for a license agent near you at [www.ca.wildlifelicense.com/InternetSales/OutletSearch/FindOutlet](http://www.ca.wildlifelicense.com/InternetSales/OutletSearch/FindOutlet).

## ANNUAL LICENSES

Resident Sport Fishing License .....	\$52.66
Non-Resident Sport Fishing License .....	\$142.05
Reduced-Fee Sport Fishing License.....	\$8.38

## SHORT-TERM LICENSES

One-Day Sport Fishing License (resident or non-resident) .....	\$17.02
Two-Day Sport Fishing License* (resident or non-resident) .....	\$26.49
Ten-Day Non-Resident Sport Fishing License** .....	\$52.66

\*Valid for two consecutive calendar days.

\*\*Valid for ten consecutive calendar days.

## REPORT CARDS AND VALIDATIONS

Sport Ocean Enhancement Validation .....	\$5.97
Spiny Lobster Report Card .....	\$10.54
Spiny Lobster Report Card Non-Reporting Fee.....	\$21.60
Sturgeon Fishing Report Card .....	\$9.21

## OTHER PERMITS

Declaration for Multi-day Fishing Trip .....	\$6.95
--	--------

## DUPLICATE FEES

Sport Fishing License (Annual) .....	\$11.62
Sport Ocean Enhancement Validation* .....	\$3.24
Sturgeon Fishing Replacement Card (CDFW license sales offices only) .....	\$16.48

## LIFETIME SPORT FISHING LICENSES

Age 9 years or younger .....	\$579.25
Age 10 to 39 years .....	\$946.75
Age 40 to 61 years.....	\$853.00
Age 62 years or older.....	\$579.25
Additional Lifetime Fishing Privileges (includes Sport Ocean Enhancement Validation and several freshwater privileges) .....	\$391.50

\*Required to fish in ocean waters south of Point Arguello (Santa Barbara County). An Ocean Enhancement Validation is not required when fishing under the authority of a One or Two-Day Sport Fishing License.

Lifetime licenses are available only at Department of Fish and Wildlife license sales offices.

Most fees include a 5 percent license agent handling fee and 3 percent ALDS application fee.

### **CATCH AND RELEASE ZERO LIMIT WATERS**

In waters where the bag limit for trout is zero, fish for which the bag limit is zero must be released unharmed, and should not be removed from the water.

### **ANGLING REGULATIONS IN NATIONAL PARKS**

Angling regulations in national parks may be more restrictive than State regulations. Anglers should check with the National Park Service to determine if seasons or bag limits differ from State regulations.

### **COHO ALERT**

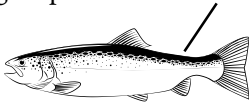
Coho (Silver) Salmon may not be taken in any of the waters of the state. Incidentally hooked Coho (Silver) Salmon must be immediately released unharmed to the waters where they are hooked.

### **STEELHEAD ANGLERS!**

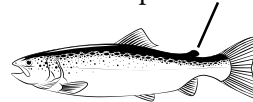
All wild steelhead caught must be released unharmed. Wild steelhead are identified by having an intact adipose fin.

Hatchery steelhead may be kept in selected waters. Hatchery steelhead are identified by a missing adipose fin and a healed scar in the location of the missing fin.

Hatchery steelhead  
missing adipose fin with healed scar.



Wild steelhead  
intact adipose fin.



### **STEELHEAD FISHING REPORT AND RESTORATION CARD**

Anglers must have a nontransferable Steelhead Fishing Report and Restoration Card issued by the department in their possession while fishing for steelhead trout in anadromous waters. For purposes of this regulation, a steelhead trout is defined as any rainbow trout greater than 16 inches in length found in anadromous waters. Anglers must record, with a ball point pen, the month, day, location fished, number of steelhead caught and kept, and number of steelhead caught and released. Month, day and location must be recorded **EVEN IF NO STEELHEAD WERE CAUGHT.**

A report-restoration card shall be valid for the calendar year. When the card is completely filled-in, a person may purchase another card. Anglers are required by law to return Steelhead Fishing Report and Restoration cards to the Department of Fish and Wildlife by January 31 of the year following the card expiration. Example: 2020 cards are to be returned by January 31, 2021.

## **HOW TO RELEASE FISH**

*Follow these five points to release fish unharmed:*

1. Land your fish as carefully and quickly as possible.
2. Try to avoid removing the fish from the water. Underwater unhooking and release is preferred.
3. Do not squeeze the fish, or touch its eyes or gills.
4. Remove only those hooks that you can see and remove easily, otherwise clip the line near the mouth on deep hooked fish.
5. Use artificial lures (no bait) to minimize deep hooking. Barbless hooks or hooks with flattened barbs make unhooking easier and less stressful on the fish.

# Anadromous Regulations

## ARTICLE 3. ALPHABETICAL LIST OF WATERS WITH SPECIAL FISHING REGULATIONS

Section 7.40 constitutes the Special regulations for Anadromous inland waters.

### 7.40. ALPHABETICAL LIST OF HATCHERY TROUT, HATCHERY STEELHEAD, AND SALMON WATERS WITH SPECIAL FISHING REGULATIONS.

(a) General Provisions:

- (1) Every body of water listed in subsection (b) is closed to the take of hatchery trout, hatchery steelhead, and salmon and to fishing for these species, unless otherwise noted.
- (2) Every body of water listed in subsection (b) is closed to all fishing except during the open season as shown. Unless otherwise provided, waters shown as open to hatchery trout, hatchery steelhead, and salmon fishing in subsection (b) are open to fishing for other species. Gear restrictions listed in this section apply to the take of all species of fish covered in subsection (b) unless otherwise noted.
- (3) Unless otherwise provided, waters closed to hatchery trout, hatchery steelhead, or

salmon fishing are closed to fishing for all other species, except that these closures do not apply to fishing for amphibians (see Section 5.05), freshwater clams (see Section 5.20), crayfish (see Section 5.35), and lamprey (see Section 5.40), using legal fishing methods other than hook- and-line fishing, and saltwater clams, crabs, ghost shrimp, and blue mud shrimp (see Ocean Regulations Booklet sections 29.20 to 29.87). Crabs may only be taken using hoop nets or by hand, and Dungeness crab may only be taken within the North Coast District and Sonoma and Mendocino Cos.

- (4) As used in this section and unless otherwise noted, daily bag and possession limits mean the total number of trout in combination, including but not limited to Rainbow, Brown, Golden, and Cutthroat Trout.
- (5) Unless otherwise provided, it is unlawful to possess more than one daily bag limit.
- (6) The waters in subsection (b) may also be subject to restrictions on fishing methods and gear (Sections 2.00 through 2.45), fishing hours (section 3.00), and the use of bait (Sections 4.00 through 4.30).

7.40 (b) ALPHABETICAL LIST OF HATCHERY TROUT, HATCHERY STEELHEAD, AND SALMON WATERS WITH SPECIAL FISHING REGULATIONS		
Body of Water	Open Season and Special Restrictions	Daily Bag and Possession Limit
7.40(b)(1) Alameda Creek and tributaries (Alameda and Santa Clara cos.).		
(A) Alameda Creek and tributaries downstream of San Antonio, Calaveras, and Del Valle Reservoirs except for Arroyo Del Valle between Bernal Ave. and the Thiessen St. intersection with Vineyard Ave.	Closed to all fishing all year.	
1. Arroyo Del Valle between Bernal Ave. and the Thiessen St. intersection with Vineyard Ave.	All year. Only artificial lures with barbless hooks may be used.	0 trout

## 7.40 (b) ALPHABETICAL LIST OF HATCHERY TROUT, HATCHERY STEELHEAD, AND SALMON WATERS WITH SPECIAL FISHING REGULATIONS

<i>Body of Water</i>	<i>Open Season and Special Restrictions</i>	<i>Daily Bag and Possession Limit</i>
7.40(b)(2) <b>Albion River</b> (Mendocino Co.). Also see Section 8.00(b) Low-Flow Restrictions.		
Main stem below the confluence of South Fork Albion.	Fourth Sat. in May through Mar. 31. Only artificial lures with barbless hooks may be used from the fourth Saturday in May through Oct. 31. Only barbless hooks may be used from Nov. 1 through Mar. 31.	2 hatchery trout or hatchery steelhead**. 4 hatchery trout or hatchery steelhead** in possession.
7.40(b)(3) <b>Alder Creek</b> (Mendocino Co.). Also see Section 8.00(b) Low-Flow Restrictions.		
Main stem below Tramway Gulch.	Fourth Sat. in May through Mar. 31. Only artificial lures with barbless hooks may be used from the fourth Sat. in May through Oct. 31. Only barbless hooks may be used from Nov. 1 through Mar. 31.	2 hatchery trout or hatchery steelhead**. 4 hatchery trout or hatchery steelhead** in possession.
7.40(b)(4) <b>American River</b> (Sacramento Co.) (Central Valley Water - regulation pending review, planned effective date before or on July 16, 2021)		
(A) From Nimbus Dam to the U.S. Geological Survey gauging station cable crossing about 300 yards downstream from the Nimbus Hatchery fish rack site.	Closed to all fishing all year.	
(B) From the U.S. Geological Survey gauging station cable crossing about 300 yards downstream from the Nimbus Hatchery fish rack site to the SMUD power line crossing at the southwest boundary of Ancil Hoffman Park.	Jan. 1 through Jul. 15. Only barbless hooks may be used.	2 hatchery trout or hatchery steelhead**. 4 hatchery trout or hatchery steelhead** in possession.
	Jul. 16 through Oct. 31. Only barbless hooks may be used.	2 hatchery trout or hatchery steelhead**. 4 hatchery trout or hatchery steelhead** in possession. 2 Chinook Salmon. 4 Chinook Salmon in possession.



## 7.40 (b) ALPHABETICAL LIST OF HATCHERY TROUT, HATCHERY STEELHEAD, AND SALMON WATERS WITH SPECIAL FISHING REGULATIONS

<i>Body of Water</i>	<i>Open Season and Special Restrictions</i>	<i>Daily Bag and Possession Limit</i>
(C) From the SMUD power line crossing at the southwest boundary of Ancil Hoffman Park downstream to the Jibboom Street bridge.	Jan. 1 through Jul. 15.	2 hatchery trout or hatchery steelhead**. 4 hatchery trout or hatchery steelhead** in possession.
	Jul. 16 through Dec. 31.	2 hatchery trout or hatchery steelhead**. 4 hatchery trout or hatchery steelhead** in possession. 2 Chinook Salmon. 4 Chinook Salmon in possession.
(D) From the Jibboom Street bridge to the mouth.	Jan. 1 through Jul. 15.	2 hatchery trout or hatchery steelhead**. 4 hatchery trout or hatchery steelhead** in possession.
	Jul. 16 through Dec. 16.	2 hatchery trout or hatchery steelhead**. 4 hatchery trout or hatchery steelhead** in possession. 2 Chinook Salmon. 4 Chinook Salmon in possession.
	Dec. 17 through Dec. 31.	2 hatchery trout or hatchery steelhead**. 4 hatchery trout or hatchery steelhead** in possession.
<b>7.40(b)(5) Antelope Creek (Tehama Co.).</b>		
(A) From confluence with North Fork downstream to U.S. Geological Survey gauging station cable crossing at mouth of Antelope Creek Canyon.	Last Sat. in Apr. through Nov. 15. Only artificial lures with barbless hooks may be used.	2 hatchery trout or hatchery steelhead**. 4 hatchery trout or hatchery steelhead** in possession.
(B) From U.S. Geological Survey gauging station cable crossing at mouth of Antelope Creek Canyon downstream to mouth of Antelope Creek.	Jun. 16 through Sep. 30.	2 hatchery trout or hatchery steelhead**. 4 hatchery trout or hatchery steelhead** in possession.

## 7.40 (b) ALPHABETICAL LIST OF HATCHERY TROUT, HATCHERY STEELHEAD, AND SALMON WATERS WITH SPECIAL FISHING REGULATIONS

<i>Body of Water</i>	<i>Open Season and Special Restrictions</i>	<i>Daily Bag and Possession Limit</i>
7.40(b)(6) <b>Aptos Creek</b> (Santa Cruz Co.) from mouth to bridge on Aptos Creek Road (first bridge on Aptos Creek Road). Also see Low-Flow Restrictions, Section 8.00(c)(4).	Dec. 1 through Mar. 7, but only on Sat., Sun., Wed., legal holidays and opening and closing days. Only barbless hooks may be used.	2 hatchery trout or hatchery steelhead**. 4 hatchery trout or hatchery steelhead** in possession
7.40(b)(7) <b>Arroyo Grande Creek</b> (San Luis Obispo Co.) from mouth to Lopez Canyon Dam.	Closed to all fishing all year.	
7.40(b)(8) <b>Arroyo Leon</b> (San Mateo Co.).	Closed to all fishing all year.	
7.40(b)(9) <b>Arroyo Seco River</b> (Monterey Co.). Also see Section 8.00(c) Low Flow Restrictions. The main stem Arroyo Seco and tributaries below the waterfall located approximately 3.5 miles upstream from the U.S. Forest Service Ranger Station.	Dec. 1 through Mar. 7, but only on Sat., Sun., Wed., legal holidays and opening and closing days. Only barbless hooks may be used.	2 hatchery trout or hatchery steelhead**. 4 hatchery trout or hatchery steelhead** in possession.
7.40(b)(10) <b>Auburn Ravine Creek</b> and tributaries (Placer Co.) east of Nelson Lane.	Fourth Sat. in May through Oct. 15.	2 hatchery trout or hatchery steelhead**. 4 hatchery trout or hatchery steelhead** in possession.
7.40(b)(11) <b>Battle Creek</b> (Shasta and Tehama cos.).		
(A) From mouth to Coleman Fish Hatchery weir.	Closed to all fishing all year.	
(B) From 250 feet upstream from the Coleman Fish Hatchery upstream to Angel Falls (near Mineral) on the South Fork and to Ponderosa Way Bridge on the North Fork.	Last Sat. in Apr. through Nov. 15. Only artificial lures with barbless hooks may be used.	2 hatchery trout or hatchery steelhead**. 4 hatchery trout or hatchery steelhead** in possession.
7.40(b)(12) <b>Bear River</b> (Humboldt Co.) downstream from County Road Bridge at Capetown, excluding tributaries.	Fourth Sat. in May through Mar. 31. Only artificial lures with barbless hooks may be used.	2 hatchery trout or hatchery steelhead**. 4 hatchery trout or hatchery steelhead** in possession.
7.40(b)(13) <b>Bear River</b> and tributaries (Placer Co.) from Highway 65 to the South Sutter Irrigation District Diversion Dam.	Fourth Sat. in May through Oct. 15.	2 hatchery trout or hatchery steelhead**. 4 hatchery trout or hatchery steelhead** in possession.

## 7.40 (b) ALPHABETICAL LIST OF HATCHERY TROUT, HATCHERY STEELHEAD, AND SALMON WATERS WITH SPECIAL FISHING REGULATIONS

<i>Body of Water</i>	<i>Open Season and Special Restrictions</i>	<i>Daily Bag and Possession Limit</i>
<b>7.40(b)(14) Big Chico Creek</b> (Butte Co.).		
(A) From mouth to Bear Hole, located approximately one mile downstream from the upper end of Bidwell Park.	Jun. 16 through Feb. 15. Only artificial lures with barbless hooks may be used from Oct. 16 through Feb. 15.	2 hatchery trout or hatchery steelhead**. 4 hatchery trout or hatchery steelhead** in possession.
(B) From Bear Hole to the upper boundary of the Big Chico Creek Ecological Reserve.	Nov. 1 through Apr. 30. Only artificial lures with barbless hooks may be used.	2 hatchery trout or hatchery steelhead**. 4 hatchery trout or hatchery steelhead** in possession.
(C) From the upper boundary of the Big Chico Creek Ecological Reserve to Higgins Hole Falls, located about ½ mile upstream from Ponderosa Way.	Closed to all fishing all year.	
<b>7.40(b)(15) Big Lagoon</b> (Humboldt Co.). For purposes of this regulation, the boundary between Big Lagoon and Maple Creek is the first private road bridge, located approximately 1/2 mile southeast of the Highway 101 bridge crossing.	All year. Only barbless hooks may be used. Cutthroat Trout minimum size limit: 10 inches.	2 Cutthroat Trout. 2 hatchery trout or hatchery steelhead**. 4 hatchery trout or hatchery steelhead** in possession.
<b>7.40(b)(16) Big River</b> (Mendocino Co.). Also see Section 8.00(b) Low-Flow Restrictions. Main stem below the confluence of Two Log Creek.	Fourth Sat. in May through Mar. 31. Only artificial lures with barbless hooks may be used from the fourth Sat. in May through Oct. 31. Only barbless hooks may be used from Nov. 1 through Mar. 31.	2 hatchery trout or hatchery steelhead**. 4 hatchery trout or hatchery steelhead** in possession.
<b>7.40(b)(17) Big Sur River</b> (Monterey Co.). Big Sur River within Pfeiffer Big Sur State Park, east of the Highway 1 bridge, to its boundary within the Ventana Wilderness Area.	Closed to all fishing all year.	
<b>7.40(b)(18) Black Butte River</b> and tributaries (Glenn Co.) except Cold Creek.	Closed to all fishing all year.	
<b>7.40(b)(19) Bodfish Creek</b> and tributaries (Santa Clara Co.).	Closed to all fishing all year.	
<b>7.40(b)(20) Bogus Creek</b> (Siskiyou Co.).	See Klamath River, subsection (b)(50).	

## 7.40 (b) ALPHABETICAL LIST OF HATCHERY TROUT, HATCHERY STEELHEAD, AND SALMON WATERS WITH SPECIAL FISHING REGULATIONS

<i>Body of Water</i>	<i>Open Season and Special Restrictions</i>	<i>Daily Bag and Possession Limit</i>
7.40(b)(21) <b>Brush Creek</b> (Mendocino Co.). Main stem below the Lawson bridge. Also see Section 8.00(c) Low-Flow Restrictions.	Fourth Sat. in May through Mar. 31. Only artificial lures with barbless hooks may be used from the fourth Sat. in May through Oct. 31. Only barbless hooks may be used from Nov. 1 through Mar. 31.	2 hatchery trout or hatchery steelhead**. 4 hatchery trout or hatchery steelhead** in possession.
7.40(b)(22) <b>Butano Creek</b> (San Mateo Co.). From mouth to county bridge on Pescadero- Bean Hollow Road. Also see Section 8.00(c)(2), Low-Flow Restrictions.	Dec. 1 through Mar. 7, but only on Sat., Sun., Wed., legal holidays and opening and closing days. Only barbless hooks may be used.	2 hatchery trout or hatchery steelhead**. 4 hatchery trout or hatchery steelhead** in possession.
7.40(b)(23) <b>Butte Creek</b> (Butte and Sutter cos.).		
(A) From Oro-Chico Road bridge crossing south of Chico to the Centerville Head Dam, located 300 yards downstream from the DeSabra Powerhouse below DeSabra Reservoir.	Nov. 15 through Feb.15. Only artificial lures with barbless hooks may be used.	2 hatchery trout or hatchery steelhead**. 4 hatchery trout or hatchery steelhead** in possession.
(B) From the Oro-Chico Road bridge crossing south of Chico to the point that Butte Creek enters the Sacramento River both via Butte Slough outfall gates at Moon's Bend and through Butte Slough, thence both the East and West Canals of the Sutter Bypass, thence Sacramento Slough.	All year.	Open to fishing for non-salmonids only. Closed to the take of trout and steelhead.
7.40(b)(24) <b>Calaveras River</b> downstream from New Hogan Dam and the diverting canal (Mormon Slough) from Bellota Weir downstream to Interstate Highway 5 (Calaveras and San Joaquin cos.).	Fourth Sat. in May through Mar. 31. Only artificial lures with barbless hooks may be used.	2 hatchery trout or hatchery steelhead**. 4 hatchery trout or hatchery steelhead** in possession.
7.40(b)(25) <b>Carmel River</b> and tributaries above Los Padres Dam (Monterey Co.).	Last Saturday in Apr. through Nov. 15. No Rainbow Trout less than 10 inches or greater than 16 inches total length may be kept. Only artificial lures with barbless hooks may be used.	5 trout, no more than 2 of which may be Rainbow Trout

## 7.40 (b) ALPHABETICAL LIST OF HATCHERY TROUT, HATCHERY STEELHEAD, AND SALMON WATERS WITH SPECIAL FISHING REGULATIONS

<i>Body of Water</i>	<i>Open Season and Special Restrictions</i>	<i>Daily Bag and Possession Limit</i>
7.40(b)(26) <b>Carmel River</b> below Los Padres Dam. (Monterey Co.).		
(A) Carmel River tributaries below Los Padres Dam and main stem from Los Padres Dam to the bridge at Robles Del Rio/Esquiline Roads (Rosie's Bridge).	Closed to all fishing all year.	
(B) Carmel River main stem below the bridge at Robles Del Rio/ Esquiline Roads (Rosie's Bridge). Also, see Section 8.00 (c) Low-Flow Restrictions.	Dec. 1 through Mar. 7, but only on Sat., Sun., Wed., legal holidays and opening and closing days. Only artificial lures with barbless hooks may be used.	2 hatchery trout or hatchery steelhead**. 4 hatchery trout or hatchery steelhead** in possession.
7.40(b)(27) <b>Chorro Creek</b> (San Luis Obispo Co.) from the point that Chorro creek enters Midway Marina in Morro Bay upstream to the twin bridges on South Bay Boulevard.	Dec. 1 through Mar. 7, but only on Sat., Sun., Wed., legal holidays and opening and closing days. Only barbless hooks may be used.	2 hatchery trout or hatchery steelhead**. 4 hatchery trout or hatchery steelhead** in possession.
7.40(b)(28) <b>Codornices Creek</b> (Alameda Co.).	Closed to all fishing all year.	
7.40(b)(29) <b>Coon Creek</b> and tributaries (Placer Co.) east of Highway 65.	Fourth Sat. in May through Oct. 15.	2 hatchery trout or hatchery steelhead**. 4 hatchery trout or hatchery steelhead** in possession.
7.40(b)(30) <b>Coon Creek</b> (San Luis Obispo Co.).	Closed to all fishing all year.	
7.40(b)(31) <b>Corralitos Creek</b> (Santa Cruz Co.) from mouth to Browns Valley Road. Also see Section 8.00(c)(5), Low- Flow Restrictions.	Dec. 1 through Mar. 7, but only on Sat., Sun., Wed., legal holidays and opening and closing days. Only barbless hooks may be used.	2 hatchery trout or hatchery steelhead**. 4 hatchery trout or hatchery steelhead** in possession.
7.40(b)(32) <b>Cosumnes River</b> (Sacramento Co.) from Highway 99 bridge upstream to the Latrobe vehicle bridge.	Jan. 1 through Oct. 15. Only barbless hooks may be used.	2 hatchery trout or hatchery steelhead**. 4 hatchery trout or hatchery steelhead** in possession.
7.40(b)(33) <b>Cottoneva Creek</b> (Mendocino Co.). Main stem below the confluence of South Fork Cottoneva Creek. Also see Section 8.00(b), Low-Flow Restrictions.	Fourth Sat. in May through Mar. 31. Only artificial lures with barbless hooks may be used from the fourth Saturday in May through Oct. 31. Only barbless hooks may be used from Nov. 1 through Mar. 31.	2 hatchery trout or hatchery steelhead**. 4 hatchery trout or hatchery steelhead** in possession.

## 7.40 (b) ALPHABETICAL LIST OF HATCHERY TROUT, HATCHERY STEELHEAD, AND SALMON WATERS WITH SPECIAL FISHING REGULATIONS

<i>Body of Water</i>	<i>Open Season and Special Restrictions</i>	<i>Daily Bag and Possession Limit</i>
7.40(b)(34) <b>Coyote Creek</b> (Santa Clara Co.) Also see Section 8.00(c) (1), Low-Flow Restrictions.	Last Sat. in Apr. through Nov. 15. Only artificial lures with barbless hooks may be used.	2 hatchery trout or hatchery steelhead**. 4 hatchery trout or hatchery steelhead** in possession.
7.40(b)(35) <b>Deer Creek</b> (Tehama Co.).		
(A) From 250 feet below Upper Deer Creek Falls and fishway (located 1.5 miles upstream from Potato Patch Campground) downstream 31 miles to U.S. Geological Survey gauging station cable crossing at mouth of Deer Creek Canyon (see Section 2.35 for closure at Upper Deer Creek Falls).	Last Sat. in Apr. through Nov. 15. Only artificial lures with barbless hooks may be used.	2 hatchery trout or hatchery steelhead**. 4 hatchery trout or hatchery steelhead** in possession.
(B) From U.S. Geological Survey gauging station cable crossing at mouth of Deer Creek Canyon downstream to mouth of Deer Creek.	Jun. 16 through Sep. 30.	2 hatchery trout or hatchery steelhead**. 4 hatchery trout or hatchery steelhead** in possession.
7.40(b)(36) <b>Deer Creek</b> (Yuba and Nevada cos.) from mouth to Smartville-Englebright Dam road crossing.	Fourth Sat. in May through Oct. 15. Only artificial lures with barbless hooks may be used.	2 hatchery trout or hatchery steelhead**. 4 hatchery trout or hatchery steelhead** in possession.
7.40(b)(37) <b>Dry Creek</b> and tributaries (Placer Co.) east of the Atkinson Street Bridge in Roseville.	Fourth Sat. in May through Oct. 15.	2 hatchery trout or hatchery steelhead**. 4 hatchery trout or hatchery steelhead** in possession.
7.40(b)(38) <b>Dry Creek</b> (Yuba and Nevada cos.) from mouth to Sid Smith Dam about one mile above junction of Scott Forbes and Peoria Roads.	Fourth Sat. in May through Oct. 15.	2 hatchery trout or hatchery steelhead**. 4 hatchery trout or hatchery steelhead** in possession.
7.40(b)(39) <b>Earl Lake/Talawa</b> (Del Norte Co.).	All year. Only barbless hooks may be used. Cutthroat Trout minimum size limit: 10 inches.	2 Cutthroat Trout. 2 hatchery trout or hatchery steelhead**. 4 hatchery trout or hatchery steelhead** in possession



## 7.40 (b) ALPHABETICAL LIST OF HATCHERY TROUT, HATCHERY STEELHEAD, AND SALMON WATERS WITH SPECIAL FISHING REGULATIONS

<i>Body of Water</i>	<i>Open Season and Special Restrictions</i>	<i>Daily Bag and Possession Limit</i>
7.40(b)(40) <b>Eel River</b> (Humboldt, Lake, Mendocino and Trinity cos.) Section 8.00 Low-Flow Restrictions also apply. <b>ALL WATERS OF THE EEL RIVER DRAINAGE EXCEPT THOSE LISTED BELOW ARE CLOSED TO ALL FISHING</b>		
(A) Main stem.		
1. From the mouth to Fulmor Road, at its paved junction with the south bank of Eel River.	All year. Only artificial lures with barbless hooks may be used from Apr. 1 through the Fri. preceding the fourth Sat. in May. Only barbless hooks may be used from fourth Sat. in May through Mar. 31.	Catch and release of Chinook Salmon. 2 hatchery trout or hatchery steelhead**. 4 hatchery trout or hatchery steelhead** in possession.
2. From Fulmor Road, at its paved junction with the south bank of the Eel River, to South Fork Eel River. Also see Section 8.00(a)(1), Low- Flow Restrictions.	All year. Only artificial lures with barbless hooks may be used from Apr. 1 through Sep. 30. Only barbless hooks may be used from Oct. 1 through Mar. 31.	Catch and release of Chinook Salmon 2 hatchery trout or hatchery steelhead** 4 hatchery trout or hatchery steelhead** in possession
3. From South Fork Eel River to Cape Horn Dam.	Jan. 1 through Mar. 31 and Fourth Sat. in May through Sep. 30. Only artificial lures with barbless hooks may be used.	Catch and release of Chinook Salmon. 2 hatchery trout or hatchery steelhead**. 4 hatchery trout or hatchery steelhead** in possession.
	Apr. 1 through the fourth Fri. in May and Oct. 1 through Dec. 31.	Closed to all fishing.
(B) Van Duzen River.		
1. Main stem from its junction with the Eel River to the end of Golden Gate Drive near Bridgeville (approximately 4,000 feet upstream from the Little Golden Gate Bridge). Also see Low- Flow Restrictions, Section 8.00(a)(3).	Fourth Sat. in May through Mar. 31. Only artificial lures with barbless hooks may be used from the fourth Sat. in May through Sep. 30. Only barbless hooks may be used from Oct. 1 through Mar. 31.	Catch and release of Chinook Salmon. 2 hatchery trout or hatchery steelhead**. 4 hatchery trout or hatchery steelhead** in possession.
	Apr.1 to fourth Friday in May.	Closed to all fishing.

## 7.40 (b) ALPHABETICAL LIST OF HATCHERY TROUT, HATCHERY STEELHEAD, AND SALMON WATERS WITH SPECIAL FISHING REGULATIONS

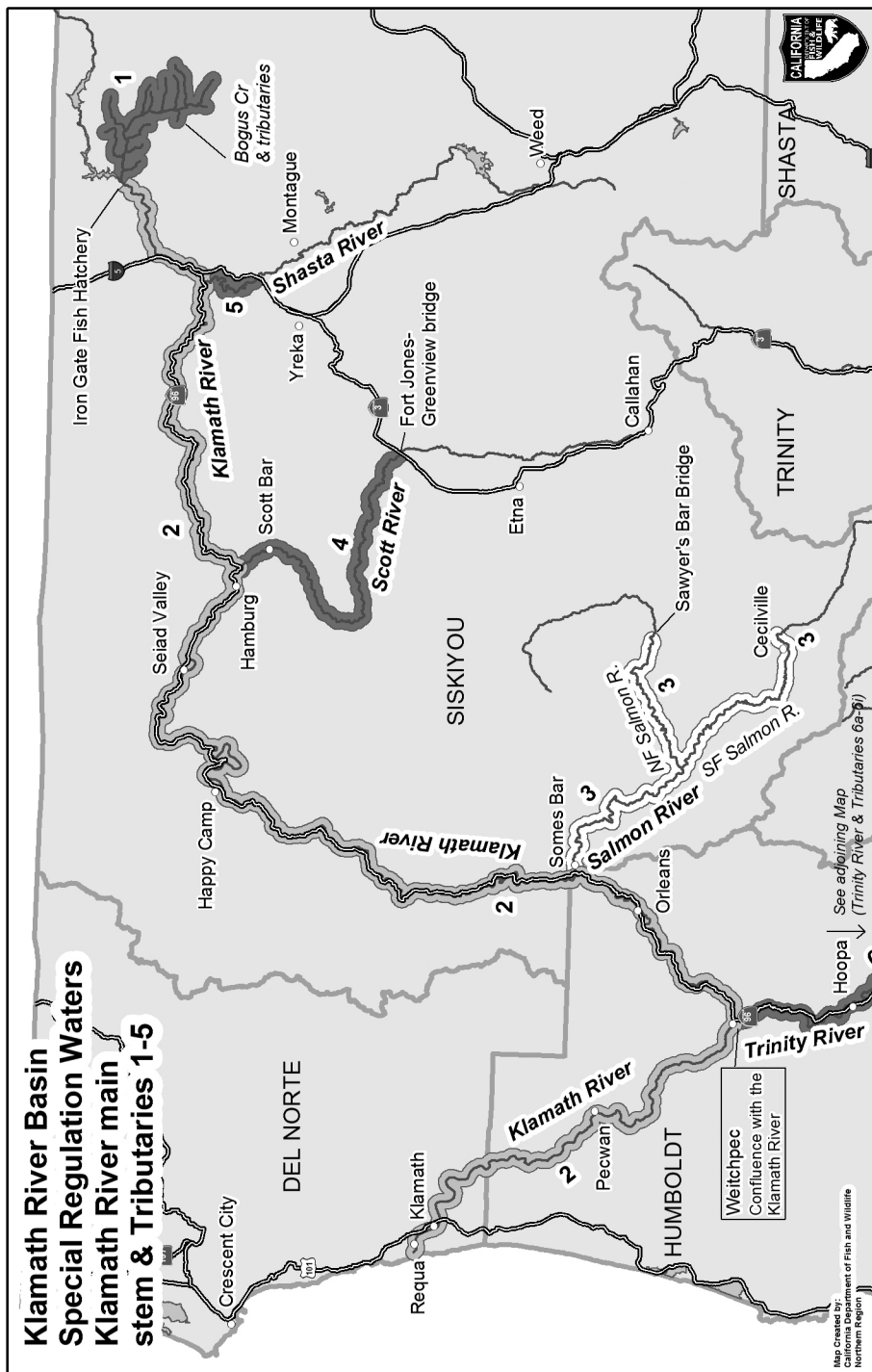
<i>Body of Water</i>	<i>Open Season and Special Restrictions</i>	<i>Daily Bag and Possession Limit</i>
(C) South Fork Eel River from mouth to Rattlesnake Creek. Also see Low-Flow Restrictions, Section 8.00(a)(2).	Fourth Sat. in May through Mar. 31. Only artificial lures with barbless hooks may be used from the fourth Saturday in May through Sep. 30. Only barbless hooks may be used from Oct. 1 through Mar. 31.	Catch and release of Chinook Salmon. 2 hatchery trout or hatchery steelhead**. 4 hatchery trout or hatchery steelhead** in possession.
	Apr.1 to fourth Fri. in May.	Closed to all fishing.
(D) Middle Fork Eel River.		
1. Middle Fork main stem from mouth to Bar Creek. Also see Section 8.00(a)(2), Low-Flow Restrictions.	Jan. 1 to May 31 and July 16 through Sep. 30. At all times, only artificial lures with barbless hooks may be used.	2 hatchery trout or hatchery steelhead**. 4 hatchery trout or hatchery steelhead** in possession.
	Jun. 1 through July 15 and Oct. 1 through Dec. 31.	Closed to all fishing.
7.40(b)(41) <b>Elk Creek</b> (Mendocino Co.). Also see Section 8.00(b), Low-Flow Restrictions. Main stem below the confluence of South Fork Elk Creek.	Fourth Sat. in May through Mar. 31. Only artificial lures with barbless hooks may be used from the fourth Sat. in May through Oct. 31. Only barbless hooks may be used from Nov. 1 through Mar. 31.	2 hatchery trout or hatchery steelhead**. 4 hatchery trout or hatchery steelhead** in possession.
7.40(b)(42) <b>Elk River</b> (Humboldt Co.) downstream from Highway 101 bridge, excluding tributaries.	Fourth Sat. in May through Mar. 31. Only artificial lures with barbless hooks may be used from the fourth Sat. in May through Oct. 31. Only barbless hooks may be used from Nov. 1 through Mar. 31.	2 hatchery trout or hatchery steelhead**. 4 hatchery trout or hatchery steelhead** in possession.
7.40(b)(43) <b>Feather River below Fish Barrier Dam</b> (Butte, Sutter and Yuba cos.). (Central Valley Water - regulation pending review, planned effective date before or on July 16, 2021)		
(A) From Fish Barrier Dam to Table Mountain bicycle bridge in Oroville.	Closed to all fishing all year.	
(B) From Table Mountain bicycle bridge to Highway 70 bridge.	Jan. 1 through Jul. 15. Only barbless hooks may be used.	2 hatchery trout or hatchery steelhead**. 4 hatchery trout or hatchery steelhead** in possession.

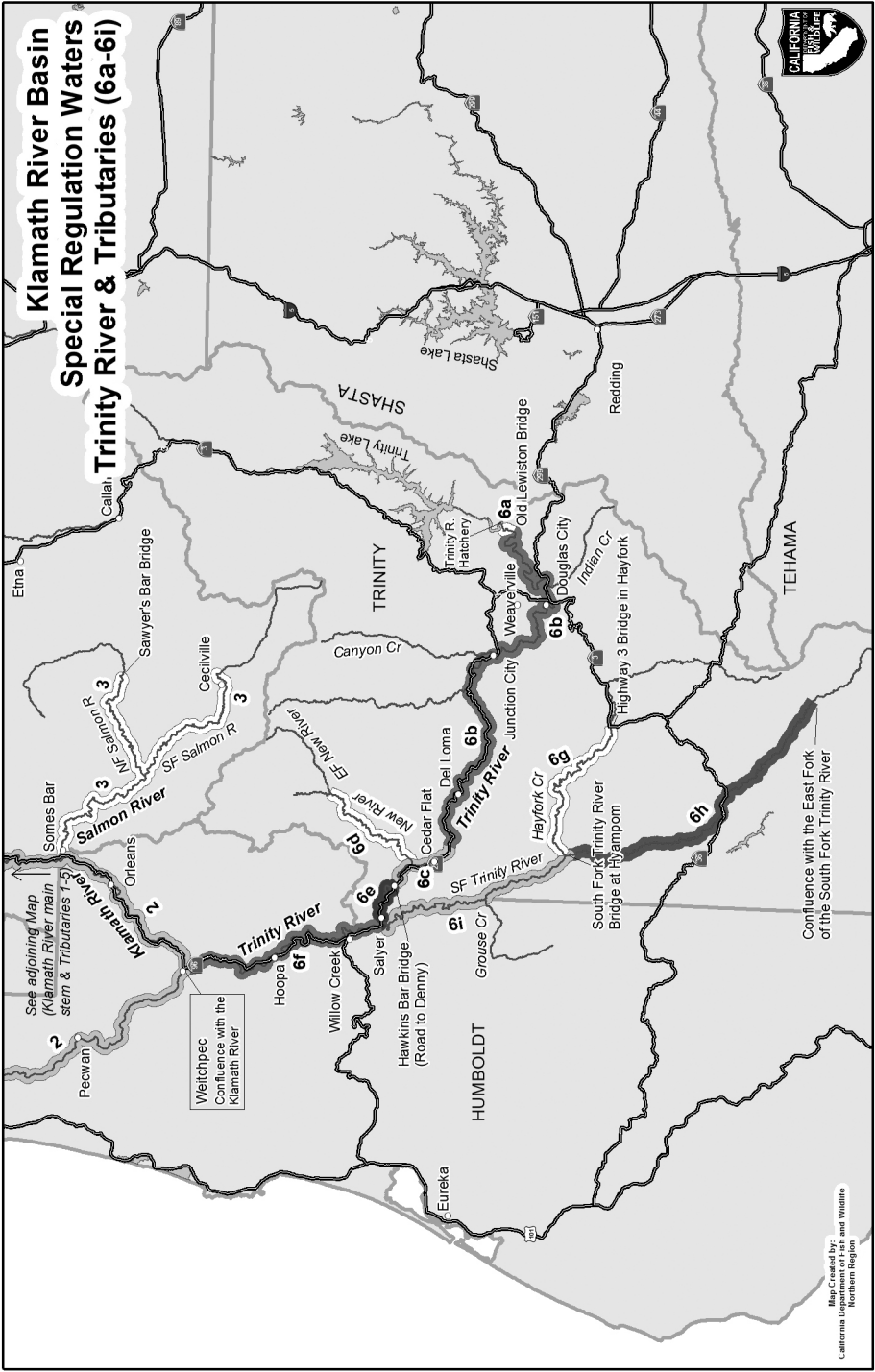
## 7.40 (b) ALPHABETICAL LIST OF HATCHERY TROUT, HATCHERY STEELHEAD, AND SALMON WATERS WITH SPECIAL FISHING REGULATIONS

<i>Body of Water</i>	<i>Open Season and Special Restrictions</i>	<i>Daily Bag and Possession Limit</i>
(C) From Highway 70 bridge to the unimproved boat ramp above the Thermalito Afterbay Outfall.	All year.	2 hatchery trout or hatchery steelhead**. 4 hatchery trout or hatchery steelhead** in possession.
(D) From the unimproved boat ramp above the Thermalito Afterbay Outfall to 200 yards above the Live Oak boat ramp.	Jan. 1 through Jul. 15.	2 hatchery trout or hatchery steelhead**. 4 hatchery trout or hatchery steelhead** in possession.
	Jul. 16 through Oct. 31.	2 hatchery trout or hatchery steelhead**. 4 hatchery trout or hatchery steelhead** in possession. 2 Chinook Salmon. 4 Chinook Salmon in possession.
	Nov. 1 through Dec. 31.	2 hatchery trout or hatchery steelhead**. 4 hatchery trout or hatchery steelhead** in possession.
(E) From 200 yards above Live Oak boat ramp to the mouth. For purposes of this regulation, the lower boundary is defined as a straight line drawn from the peninsula point on the west bank to the Verona Marine boat ramp.	Jan. 1 through Jul. 15.	2 hatchery trout or hatchery steelhead**. 4 hatchery trout or hatchery steelhead** in possession.
	Jul. 16 through Dec. 16.	2 hatchery trout or hatchery steelhead**. 4 hatchery trout or hatchery steelhead** in possession. 2 Chinook Salmon. 4 Chinook Salmon in possession.
	Dec. 17 to Dec. 31.	2 hatchery trout or hatchery steelhead**. 4 hatchery trout or hatchery steelhead** in possession.

## 7.40 (b) ALPHABETICAL LIST OF HATCHERY TROUT, HATCHERY STEELHEAD, AND SALMON WATERS WITH SPECIAL FISHING REGULATIONS

<i>Body of Water</i>	<i>Open Season and Special Restrictions</i>	<i>Daily Bag and Possession Limit</i>
7.40(b)(44) <b>Freshwater Creek</b> (Humboldt Co.) downstream from bridge at "3 Corners" on the Old Arcata Road, excluding tributaries.	Fourth Sat. in May through Mar. 31. Only artificial lures with barbless hooks may be used from the fourth Sat. in May through Oct. 31. Only barbless hooks may be used from Nov. 1 through Mar. 31.	2 hatchery trout or hatchery steelhead**. 4 hatchery trout or hatchery steelhead** in possession.
7.40(b)(45) <b>Garcia River</b> (Mendocino Co.). Also see Section 8.00(b), Low-Flow Restrictions. Main stem below the Eureka Hill Road bridge.	Fourth Sat. in May through Mar. 31. Only artificial lures with barbless hooks may be used from the fourth Sat. in May through Oct. 31. Only barbless hooks may be used from Nov. 1 through Mar. 31.	2 hatchery trout or hatchery steelhead**. 4 hatchery trout or hatchery steelhead** in possession.
7.40(b)(46) <b>Greenwood Creek</b> (Mendocino Co.). Also see Section 8.00(b), Low-Flow Restrictions. Main stem below the log bridge about 1-1/2 miles east of Highway 1.	Fourth Sat. in May through Mar. 31. Only artificial lures with barbless hooks may be used from the fourth Sat. in May through Oct. 31. Only barbless hooks may be used from Nov. 1 through Mar. 31.	2 hatchery trout or hatchery steelhead**. 4 hatchery trout or hatchery steelhead** in possession.
7.40(b)(47) <b>Guadalupe River</b> below Guadalupe Reservoir (Santa Clara Co.) including Los Gatos Creek below Vasona Lake, and Alamitos Creek and Arroyo Calero below Calero Reservoir.	Last Sat. in Apr. through Nov. 15. Only artificial lures and barbless hooks may be used.	2 hatchery trout or hatchery steelhead**. 4 hatchery trout or hatchery steelhead** in possession.
7.40(b)(48) <b>Gualala River</b> (Mendocino and Sonoma cos.). Also see Section 8.00(b). Main stem below the confluence of Wheatfield and South Forks.	Fourth Sat. in May through Mar. 31. Only artificial lures with barbless hooks may be used from the fourth Sat. in May through Oct. 31. Only barbless hooks may be used from Nov. 1 through Mar. 31. Fishing from a flotation device is prohibited from Nov. 15 through Feb. 28 from the confluence of the North Fork to the Highway 1 bridge.	2 hatchery trout or hatchery steelhead**. 4 hatchery trout or hatchery steelhead** in possession.
7.40(b)(49) <b>Islay Creek</b> (San Luis Obispo Co.).	Closed to all fishing all year.	







# Klamath River Basin Regulations

Subsection 7.40(b)(50) includes the fall-run Chinook Regulation (planned effective date before or on August 15, 2021). See also maps on pages 25-26.

Subsection 7.40(b)(51) constitutes the Special Order for spring-run Chinook Salmon regulation. The season opens July 1, 2021; see also Update on page 7.

Please call the Klamath hotline (1-800-564-6479) for the latest on Chinook Salmon angling.

**NOTE:** SHADED TEXT INDICATES REGULATIONS THAT HAVE CHANGED FOR 2021-2022

## (50) KLAMATH RIVER BASIN REGULATIONS

Anadromous Waters of the Klamath River Basin Downstream of Iron Gate and Lewiston dams. This subsection applies only to waters of the Klamath River Basin that are accessible to anadromous salmonids. This subsection does not apply to waters of the Klamath River Basin that are inaccessible to anadromous salmon and trout, portions of the Klamath River system upstream of Iron Gate Dam, portions of the Trinity River system upstream of Lewiston Dam, and the Shasta River and tributaries upstream of Dwinell Dam.

### (A) Restrictions and Requirements.

- (1) Only barbless hooks may be used. (For definitions regarding legal hook types, hook gaps and rigging see Chapter 2, Article 1, Section 2.10.)
- (2) During closures to the take of adult salmon, it shall be unlawful to remove any adult Chinook Salmon from the water by any means.
- (3) See Section 1.74 for sport fish report card requirements.

### (B) General Area Closures.

- (1) No fishing is allowed within 750 feet of any department fish-counting weir.
- (2) No fishing is allowed from the Ishi Pishi Road bridge upstream to and including Ishi Pishi Falls from Aug. 15 through Dec. 31. Exception: members of the Karuk Tribe listed on the current Karuk Tribal Roll may fish at Ishi Pishi Falls using hand-held dip nets.
- (3) No fishing is allowed from Sep. 15 through Dec. 31 in the Klamath River within 500 feet of the mouths of the Salmon, Shasta and Scott rivers and Blue Creek.
- (4) No fishing is allowed from Jun. 15 through Sep. 14 in the Klamath River from 500 feet above the mouth of Blue Creek to 500 feet downstream of the mouth of Blue Creek.

### (C) Klamath River Basin Possession Limits.

- (1) Trout Possession Limits.
  - (a) The Brown Trout possession limit is 20.
  - (b) The hatchery trout or hatchery steelhead possession limits are as follows:
    - (i) Klamath River - 4 hatchery trout or hatchery steelhead.

- (ii) Trinity River - 4 hatchery trout or hatchery steelhead.

### (2) Chinook Salmon Possession Limits.

- (a) Klamath River downstream of the Highway 96 bridge at Weitchpec from Jan. 1 to Aug. 14 and the Trinity River downstream of the Old Lewiston Bridge to the confluence of the South Fork Trinity River from Jan. 1 to Aug. 31: 2 Chinook Salmon.
- (b) Klamath River from Aug. 15 to Dec. 31 and Trinity River from Sep. 1 to Dec. 31: 6 Chinook Salmon. No more than 3 Chinook Salmon over 23 inches total length may be retained when the take of salmon over 23 inches total length is allowed.

### (D) Klamath River Basin Chinook Salmon Quotas.

Klamath River fall-run Chinook Salmon take is regulated using quotas. Accounting of the tribal and non-tribal harvest is closely monitored from Aug. 15 through Dec. 31 each year. Quota areas are noted in subsection (b)(50)(E) with "Fall Run Quota" in the Open Season and Special Restrictions column.

- (1) Quota for Entire Basin. The 2021 Klamath River Basin quota is 1,221 Klamath River fall-run Chinook Salmon over 23 inches total length. The department shall inform the commission, and the public via the news media, prior to any implementation of restrictions triggered by the quotas. (NOTE: A department status report on progress toward the quotas for the various river sections is updated weekly, and available at 1-800-564-6479.)
- (2) Subquota Percentages.
  - (a) The subquota for the Klamath River upstream of the Highway 96 bridge at Weitchpec and the Trinity River is 50% of the total Klamath River Basin quota.
    - (i) The subquota for the Klamath River from 3,500 feet downstream of the Iron Gate Dam to the Highway 96 bridge at Weitchpec is 17% of the total Klamath River Basin quota.
    - (ii) The subquota for the Trinity River main stem downstream of the Old

- Lewiston Bridge to the Highway 299 West bridge at Cedar Flat is 16.5% of the total Klamath River Basin quota.
- (iii) The subquota for the Trinity River main stem downstream of the Denny Road bridge at Hawkins Bar to the confluence with the Klamath River is 16.5% of the total Klamath River Basin quota.
- (b) The subquota for the lower Klamath River downstream of the Highway 96 bridge at Weitchpec is 50% of the total Klamath River Basin quota.

- (i) The Spit Area (within 100 yards of the channel through the sand spit formed at the Klamath River mouth) will close when 15% of the total Klamath River Basin quota is taken downstream of the Highway 101 bridge.

**(E) Klamath River Basin Open Seasons and Bag Limits.**

All anadromous waters of the Klamath River Basin are closed to all fishing for all year except those areas listed in the following table. Bag limits are for trout and Chinook Salmon in combination unless otherwise specified.

<b>7.40 (b) ALPHABETICAL LIST OF HATCHERY TROUT, HATCHERY STEELHEAD, AND SALMON WATERS WITH SPECIAL FISHING REGULATIONS</b>		
<i>Body of Water</i>	<i>Open Season and Special Restrictions</i>	<i>Daily Bag and Possession Limit</i>
7.40(b)(50) <b>Klamath River</b> all anadromous waters in the Lower Klamath River Basin downstream of Iron Gate and Lewiston Dams (Del Norte, Humboldt, Siskiyou, and Trinity cos.). (See North Coast District Regulations, Section 7.00(a) for the non-anadromous waters of the Lower Klamath River Basin, and 7.50(b)(73))		
1. Bogus Creek and tributaries.	Fourth Sat. in May through Aug. 31. Only artificial lures with barbless hooks may be used.	2 hatchery trout or hatchery steelhead**.
2. Klamath River main stem from 3,500 feet downstream of Iron Gate Dam to the mouth.		
a. Klamath River from 3,500 feet downstream of the Iron Gate Dam to the Highway 96 bridge at Weitchpec.	Jan. 1 to Aug. 14.	0 Chinook Salmon. 2 hatchery trout or hatchery steelhead**.
	Fall-run Quota: 208 Chinook Salmon Aug. 15 to Dec. 31, 2021.	2 Chinook Salmon - no more than 1 fish over 23 inches total length until subquota is met, then 0 fish over 23 inches total length. 2 hatchery trout or hatchery steelhead**.
<b>Fall Run Quota Exception:</b> Chinook Salmon over 23 inches total length may be retained from 3,500 feet downstream of Iron Gate Dam to the Interstate Highway 5 bridge when the department determines that the adult fall-run Chinook Salmon spawning escapement at Iron Gate Hatchery exceeds 8,000 fish. Daily bag and possession limits specified for fall-run Chinook Salmon apply during this exception.		

## 7.40 (b) ALPHABETICAL LIST OF HATCHERY TROUT, HATCHERY STEELHEAD, AND SALMON WATERS WITH SPECIAL FISHING REGULATIONS

<i>Body of Water</i>	<i>Open Season and Special Restrictions</i>	<i>Daily Bag and Possession Limit</i>
b. Klamath River downstream of the Highway 96 bridge at Weitchpec.	Jan. 1 to Aug. 14.	2 Chinook Salmon. 2 hatchery trout or hatchery steelhead**.
	Fall-run Quota: 611 Chinook Salmon Aug. 15 to Dec. 31, 2021.	2 Chinook Salmon - no more than 1 fish over 23 inches total length until subquota is met, then 0 fish over 23 inches total length. 2 hatchery trout or hatchery steelhead**.
<b>Fall Run Quota Exception:</b> Chinook Salmon over 23 inches total length may be retained downstream of the Old Lewiston Bridge to the mouth of Indian Creek when the department determines that the adult fall-run Chinook Salmon spawning escapement at Trinity River Hatchery exceeds 4,800 fish. Daily bag and possession limits specified for fall-run Chinook Salmon apply during this exception.		
b. Klamath River downstream of the Highway 96 bridge at Weitchpec.	Jan. 1 to Aug. 14.	2 Chinook Salmon. 2 hatchery trout or hatchery steelhead**.
	Fall-run Quota: 611 Chinook Salmon Aug. 15 to Dec. 31, 2021.	2 Chinook Salmon - no more than 1 fish over 23 inches total length until subquota is met, then 0 fish over 23 inches total length. 2 hatchery trout or hatchery steelhead**.
<b>Fall Run Quota Exception:</b> Spit Area (within 100 yards of the channel through the sand spit formed at the Klamath River mouth). This area will be closed to all fishing after 15% of the total Klamath River Basin quota has been taken. All legally caught Chinook Salmon must be retained. Once the adult (greater than 23 inches) component of the total daily bag limit has been retained, anglers must cease fishing in the spit area.		
3. Salmon River main stem, main stem of North Fork downstream of Sawyer's Bar bridge, and main stem of South Fork downstream of the confluence of the East Fork of the South Fork.	Nov. 1 through Feb. 28.	2 hatchery trout or hatchery steelhead**.
4. Scott River main stem downstream of the Fort Jones-Greenville bridge to the confluence with the Klamath River.	Fourth Sat. in May through Feb. 28.	2 hatchery trout or hatchery steelhead**.
5. Shasta River main stem downstream of the Interstate Highway 5 bridge north of Yreka to the confluence with the Klamath River.	Fourth Sat. in May through Aug. 31 and Nov. 16 through Feb. 28.	2 hatchery trout or hatchery steelhead**.

## 7.40 (b) ALPHABETICAL LIST OF HATCHERY TROUT, HATCHERY STEELHEAD, AND SALMON WATERS WITH SPECIAL FISHING REGULATIONS

<i>Body of Water</i>	<i>Open Season and Special Restrictions</i>	<i>Daily Bag and Possession Limit</i>
6. Trinity River and tributaries.		
a. Trinity River main stem from 250 feet downstream of Lewiston Dam to the Old Lewiston Bridge.	Apr. 1 through Sep. 15. Only artificial flies with barbless hooks may be used.	2 hatchery trout or hatchery steelhead**.
b. Trinity River main stem downstream of the Old Lewiston Bridge to the Highway 299 West bridge at Cedar Flat.	Jan. 1 to Aug. 31.	2 Chinook Salmon. 10 Brown Trout. 2 hatchery trout or hatchery steelhead**.
	Fall-run Quota: 201 Chinook Salmon Sep. 1 to Dec. 31, 2021.	2 Chinook Salmon - no more than 1 fish over 23 inches total length until subquota is met, then 0 fish over 23 inches total length. 10 Brown Trout. 2 hatchery trout or hatchery steelhead**.
<b>Fall Run Quota Exception:</b> Chinook Salmon over 23 inches total length may be retained downstream of the Old Lewiston Bridge to the mouth of Indian Creek when the department determines that the adult fall-run Chinook Salmon spawning escapement at Trinity River Hatchery exceeds 4,800 fish. Daily bag and possession limits specified for fall-run Chinook Salmon apply during this exception.		
c. Trinity River main stem downstream of the Highway 299 West bridge at Cedar Flat to the Denny Road bridge at Hawkins Bar.	Jan. 1 through Aug. 31.	2 Chinook Salmon. 10 Brown Trout. 2 hatchery trout or hatchery steelhead**.
	Sep. 1 through Dec. 31.	Closed to all fishing.
d. New River main stem downstream of the confluence of the East Fork to the confluence with the Trinity River.	Sep. 15 through Nov. 15. Only artificial lures with barbless hooks may be used.	2 hatchery trout or hatchery steelhead**.
e. Trinity River main stem downstream of the Denny Road bridge at Hawkins Bar to the mouth of the South Fork Trinity River.	Jan. 1 to Aug. 31.	2 Chinook Salmon. 10 Brown Trout. 2 hatchery trout or hatchery steelhead**.
	Fall-run Quota: 201 Chinook Salmon Sep. 1 through Dec. 31, 2021. This is the cumulative quota for subsections 6.e. and 6.f. of this table.	2 Chinook Salmon - no more than 1 fish over 23 inches total length until subquota is met, then 0 fish over 23 inches total length. 10 Brown Trout. 2 hatchery trout or hatchery steelhead**.

## 7.40 (b) ALPHABETICAL LIST OF HATCHERY TROUT, HATCHERY STEELHEAD, AND SALMON WATERS WITH SPECIAL FISHING REGULATIONS

<i>Body of Water</i>	<i>Open Season and Special Restrictions</i>	<i>Daily Bag and Possession Limit</i>
f. Trinity River main stem downstream of the mouth of the South Fork Trinity River to the confluence with the Klamath River.	Jan. 1 to Aug. 31.	0 Chinook Salmon. 10 Brown Trout. 2 hatchery trout or hatchery steelhead**.
	Fall-run Quota: 201 Chinook Salmon Sep. 1 through Dec. 31, 2021. This is the cumulative quota for subsections 6.e. and 6.f. of this table.	2 Chinook Salmon - no more than 1 fish over 23 inches total length until subquota is met, then 0 fish over 23 inches total length. 10 Brown Trout. 2 hatchery trout or hatchery steelhead**.
g. Hayfork Creek main stem downstream of the Highway 3 bridge in Hayfork to the confluence with the South Fork Trinity River.	Nov. 1 through Mar. 31. Only artificial lures with barbless hooks may be used.	2 hatchery trout or hatchery steelhead**.
h. South Fork Trinity River downstream of the confluence with the East Fork of the South Fork Trinity River to the South Fork Trinity River bridge at Hyampom.	Nov. 1 through Mar. 31. Only artificial lures with barbless hooks may be used.	2 hatchery trout or hatchery steelhead**.
i. South Fork Trinity River downstream of the South Fork Trinity River bridge at Hyampom to the confluence with the Trinity River.	Nov. 1 through Mar. 31.	0 Chinook Salmon. 2 hatchery trout or hatchery steelhead**.
<p>* Wild Chinook Salmon are those not showing a healed adipose fin clip and not showing a healed left ventral fin clip.</p> <p>** Hatchery trout or steelhead in anadromous waters are those showing a healed adipose fin clip (adipose fin is absent). Unless otherwise provided, all other trout and steelhead must be immediately released. Wild trout or steelhead are those not showing a healed adipose fin clip (adipose fin is present).</p> <p>Note: Authority cited: Sections 200, 205, 265, 270, 315, 316.5 and 399, Fish and Game Code.</p> <p>Reference: Sections 200, 205, 265, 270 and 316.5, Fish and Game Code.</p>		
<p>7.40(b)(51) Special Order Regarding Take of Chinook Salmon in <b>Anadromous Waters of the Klamath River Basin</b> Downstream of Iron Gate and Lewiston Dams.</p> <p>Notwithstanding subsection (b)(50) of Section 7.40, between Jan. 1 and Aug. 14 on the Klamath River and between January 1 and August 31 on the Trinity River, South Fork Trinity River, Chinook Salmon may not be taken or possessed except as authorized on the identified segments of rivers as listed in the following table. All other restrictions apply.</p>		
(A) Klamath River segment identified in subsection 7.50(b)(50)(E)2.b.	Jul. 1 through Aug. 14	1 Chinook Salmon. 2 Chinook Salmon in possession.
(B) Trinity River segment identified in subsection 7.50(b)(50)(E)6.b	Jul. 1 through Aug. 31	1 Chinook Salmon. 2 Chinook Salmon in possession.

## 7.40 (b) ALPHABETICAL LIST OF HATCHERY TROUT, HATCHERY STEELHEAD, AND SALMON WATERS WITH SPECIAL FISHING REGULATIONS

<i>Body of Water</i>	<i>Open Season and Special Restrictions</i>	<i>Daily Bag and Possession Limit</i>
(C) Trinity River segment identified in subsection 7.50(b)(50)(E)6.c.	Jul. 1 through Aug. 31	1 Chinook Salmon. 2 Chinook Salmon in possession.
(D) Trinity River segment identified in subsection 7.50(b)(50)(E)6.e.	Jul. 1 through Aug. 31	1 Chinook Salmon. 2 Chinook Salmon in possession.
7.40(b)(52) <b>Laguna de Santa Rosa</b> (Sonoma Co. tributary to Russian River) upstream from Guerneville Road bridge.	Last Saturday in Apr. through Nov. 15.	Open to fishing for non-salmonids only. Closed to the take of trout and steelhead.
7.40(b)(53) <b>Lagunitas Creek</b> and tributaries (Marin Co.).	Closed to all fishing all year.	
7.40(b)(54) <b>Limekiln Creek</b> and tributaries above Highway 1 (Monterey Co.). Also see Section 8.00(c)(9), Low- Flow Restrictions.	Dec. 1 through Mar. 7, but only on Sat., Sun., Wed., legal holidays and opening and closing days. Only barbless hooks may be used.	2 hatchery trout or hatchery steelhead**. 4 hatchery trout or hatchery steelhead** in possession.
7.40(b)(55) <b>Little River</b> (Humboldt Co.) downstream from the County Road bridge at Crannell, excluding tributaries.	Fourth Sat. in May through Mar. 31. Cutthroat Trout minimum size limit: 10 inches total length. Only artificial lures with barbless hooks may be used from the fourth Sat. in May through Oct. 31. Only barbless hooks may be used from Nov. 1 through Mar. 31.	2 Cutthroat Trout. 2 hatchery trout or hatchery steelhead**. 4 hatchery trout or hatchery steelhead** in possession.
7.40(b)(56) <b>Little Sur River</b> and tributaries above Coast Road (Monterey Co.).	Fourth Sat. in May through Oct. 31. Only artificial lures with barbless hooks may be used.	2 hatchery trout or hatchery steelhead**. 4 hatchery trout or hatchery steelhead** in possession.
	Nov. 16 through the Fri. preceding the last Sat. in Apr. Only artificial lures with barbless hooks may be used.	0 trout.
7.40(b)(57) <b>Llagas Creek</b> (Santa Clara Co.). Also see Section 8.00(c)(5), Low-Flow Restrictions.		
(A) From mouth to Monterey Highway Bridge.	Dec. 1 through Mar. 7, but only on Sat., Sun., Wed., legal holidays and opening and closing days. Only barbless hooks may be used.	2 hatchery trout or hatchery steelhead**. 4 hatchery trout or hatchery steelhead** in possession.
(B) From Monterey Highway bridge to Cheshbro Dam.	Closed to all fishing all year.	
7.40(b)(58) <b>Los Osos Creek</b> (San Luis Obispo Co.).	Closed to all fishing all year.	

## 7.40 (b) ALPHABETICAL LIST OF HATCHERY TROUT, HATCHERY STEELHEAD, AND SALMON WATERS WITH SPECIAL FISHING REGULATIONS

<i>Body of Water</i>	<i>Open Season and Special Restrictions</i>	<i>Daily Bag and Possession Limit</i>
7.40(b)(59) <b>Los Padres Reservoir</b> (Monterey Co.).	Last Saturday in Apr. through Nov. 15. Only artificial lures with barbless hooks may be used.	5 Brown Trout. 0 Rainbow Trout.
7.40(b)(60) <b>Mad River</b> and tributaries (Humboldt Co.).		
(A) Mad River from the mouth to 200 yards upstream.	Jan. 1 through Mar. 31. Only artificial lures with barbless hooks may be used.	2 hatchery trout or hatchery steelhead**. 4 hatchery trout or hatchery steelhead** in possession.
(B) Mad River main stem, from 200 yards above its mouth upstream to the confluence with Cowan Creek, excluding tributaries. Also see Low-Flow Restrictions, Section 8.00(a)(4).	Fourth Sat. in May through Mar. 31. Only artificial lures with barbless hooks may be used from the fourth Sat. in May through Oct. 31. Only barbless hooks may be used from Nov 1 through Mar. 31.	2 hatchery trout or hatchery steelhead**. 4 hatchery trout or hatchery steelhead** in possession.
(C) Mad River main stem, from the confluence with Cowan Creek to the confluence with Deer Creek, excluding tributaries.	Closed to all fishing all year.	
(D) Mad River main stem from the confluence with Deer Creek to Ruth Dam.	Fourth Sat. in May through Oct. 31. Only artificial lures with barbless hooks may be used.	2 hatchery trout or hatchery steelhead**. 4 hatchery trout or hatchery steelhead** in possession.
7.40(b)(61) <b>Mattole River</b> (Humboldt Co.). Also see Section 8.00(a), Low-Flow Restrictions.		
(A) Mattole River main stem from mouth to 200 yards upstream.	Closed to all fishing all year.	
(B) Mattole River main stem from 200 yards upstream of mouth to confluence with Stansberry Creek.	Jan. 1 through Mar. 31. Only artificial lures with barbless hooks may be used.	2 hatchery trout or hatchery steelhead**. 4 head** in possession.
(C) Mattole River main stem from confluence with Stansberry Creek to confluence with Honeydew Creek.	Jan. 1 through Mar. 31 and fourth Sat. in May through Aug. 31. Only artificial lures with barbless hooks may be used.	2 hatchery trout or hatchery steelhead**. 4 hatchery trout or hatchery steelhead** in possession.
7.40(b)(62) <b>McDonald Creek</b> (Humboldt Co.).	Closed to all fishing all year.	
7.40(b)(63) <b>Merced River</b> (Merced Co.)		
(A) From Crocker-Huffman Dam downstream to the Schaffer Bridge on Oakdale Road.	Jan. 1 through Oct. 31. Only artificial lures with barbless hooks may be used.	2 hatchery trout or hatchery steelhead**. 4 hatchery trout or hatchery steelhead** in possession.



## 7.40 (b) ALPHABETICAL LIST OF HATCHERY TROUT, HATCHERY STEELHEAD, AND SALMON WATERS WITH SPECIAL FISHING REGULATIONS

Body of Water	Open Season and Special Restrictions	Daily Bag and Possession Limit
(B) From the Schaffer Bridge on Oakdale Road downstream to the mouth.	Jan. 1 through Oct. 31. Bait may be used from Jan. 1 through Oct. 31. However, from Apr. 1 through the Fri. preceding the fourth Sat. in May, bait may be used only with single hooks having a gap between 1/2 and 1 inch, or with multiple hooks having a gap between 1/4 and 1/2 inch.	2 hatchery trout or hatchery steelhead**. 4 hatchery trout or hatchery steelhead** in possession.
7.40(b)(64) Mill Creek (Tehama Co.)		
(A) From the Lassen National Park boundary downstream to the U.S. Geological Survey gauging station cable crossing at the mouth of Mill Creek Canyon.	Last Sat. in Apr. through Nov. 15. Only artificial lures with barbless hooks may be used.	2 hatchery trout or hatchery steelhead**. 4 hatchery trout or hatchery steelhead** in possession.
(B) From U.S. Geological Survey gauging station cable crossing at mouth of Mill Creek Canyon downstream to the mouth of Mill Creek.	Jun. 16 through Sep. 30.	2 hatchery trout or hatchery steelhead**. 4 hatchery trout or hatchery steelhead** in possession.
7.40(b)(65) Mitchell Creek and tributaries (Contra Costa Co.).	Closed to all fishing all year.	
7.40(b)(66) Mokelumne River (San Joaquin Co.). (Central Valley Water - regulation pending review, planned effective date before or on July 16, 2021)		
(A) From Camanche Dam to Elliot Road.	Jan. 1 through Mar. 31.	1 hatchery trout or hatchery steelhead**.
	Fourth Sat. in in May through Jul. 15.	1 hatchery trout or hatchery steelhead**.
	Jul. 16 through Oct. 15.	1 hatchery trout or hatchery steelhead**. 2 Chinook Salmon. 4 Chinook Salmon in possession.
(B) From Elliot Road to the Woodbridge Irrigation District Dam including Lodi Lake.	Jan. 1 through Jul. 15.	1 hatchery trout or hatchery steelhead**.
	Jul. 16 through Dec. 31.	1 hatchery trout or hatchery steelhead**. 2 Chinook Salmon. 4 Chinook Salmon in possession.
(C) Between the Woodbridge Irrigation District Dam and the Lower Sacramento Road bridge.	Closed to all fishing all year.	

## 7.40 (b) ALPHABETICAL LIST OF HATCHERY TROUT, HATCHERY STEELHEAD, AND SALMON WATERS WITH SPECIAL FISHING REGULATIONS

<i>Body of Water</i>	<i>Open Season and Special Restrictions</i>	<i>Daily Bag and Possession Limit</i>
(D) From the Lower Sacramento Road bridge to the mouth. For purposes of this subsection, this river segment is defined as Mokelumne River and its tributary sloughs downstream of the Lower Sacramento Road bridge and east of Highway 160 and north of Highway 12.	Jan. 1 through Jul. 15.	1 hatchery trout or hatchery steelhead**.
	Jul. 16 through Dec. 16.	1 hatchery trout or hatchery steelhead**. 2 Chinook Salmon. 4 Chinook Salmon in possession.
	Dec. 17 through Dec. 31.	1 hatchery trout or hatchery steelhead**.
<b>7.40(b)(67) Nacimiento River</b> (Monterey and San Luis Obispo cos.)		
Main stem below Nacimiento Dam, downstream to its confluence with the Salinas River.	Sat. preceding Memorial Day through Oct. 31. Only artificial lures with barbless hooks may be used.	2 hatchery trout or hatchery steelhead**. 4 hatchery trout or hatchery steelhead** in possession.
<b>7.40(b)(68) Napa River</b> and tributaries (Napa Co.). Also see Section 8.00(b) Low-Flow Restrictions.		
(A) Main stem above the Oakville Cross Road Bridge near Yountville and all Napa River tributaries.	Closed to all fishing all year.	
(B) From the Oakville Cross Road Bridge near Yountville to the Trancas Bridge. Note: The Napa River below the Trancas Bridge is tidewater, and is under the regulations for the Ocean and San Francisco Bay District (see Sections 1.53 and 27.00).	Fourth Sat. in May through Mar. 31. Only artificial lures with barbless hooks may be used from the fourth Sat. in May through Oct. 31. Only barbless hooks may be used from Nov. 1 through Mar. 31.	2 hatchery trout or hatchery steelhead**. 4 hatchery trout or hatchery steelhead** in possession.
<b>7.40(b)(69) Navarro River</b> (Mendocino Co.). Also see Section 8.00(b)(1) Low-Flow Restrictions. Main stem below the Greenwood Road bridge.	Fourth Sat. in May through Mar. 31. Only artificial lures with barbless hooks may be used from the fourth Sat. in May through Oct. 31. Only barbless hooks may be used from Nov. 1 through Mar. 31.	2 hatchery trout or hatchery steelhead**. 4 hatchery trout or hatchery steelhead** in possession.
<b>7.40(b)(70) Noyo River</b> (Mendocino Co.). Also see Section 8.00(b)(1) Low-Flow Restrictions.		
(A) Noyo River main stem from the mouth to the Georgia-Pacific logging road bridge one mile east of Highway 1.	Fourth Sat. in May through Mar. 31. Only artificial lures with barbless hooks may be used from the fourth Sat. in May through Oct. 31. Only barbless hooks may be used from Nov. 1 through Mar. 31.	2 hatchery trout or hatchery steelhead**. 4 hatchery trout or hatchery steelhead** in possession.
(B) Noyo River main stem from the Georgia-Pacific logging road bridge one mile east of Highway 1 to the confluence with the South Fork Noyo River.	Fourth Sat. in May through Oct. 1. Only artificial lures with barbless hooks may be used.	2 hatchery trout or hatchery steelhead**. 4 hatchery trout or hatchery steelhead** in possession.

## 7.40 (b) ALPHABETICAL LIST OF HATCHERY TROUT, HATCHERY STEELHEAD, AND SALMON WATERS WITH SPECIAL FISHING REGULATIONS

Body of Water	Open Season and Special Restrictions	Daily Bag and Possession Limit
(C) Noyo River main stem from the confluence with the South Fork Noyo River to the Sonoma/Mendicino Boy Scout Council Camp.	Fourth Sat. in May through Mar. 31. Only artificial lures with barbless hooks may be used from the fourth Sat. in May through Oct. 31. Only barbless hooks may be used from Nov. 1 through Mar. 31.	2 hatchery trout or hatchery steelhead**. 4 hatchery trout or hatchery steelhead** in possession.
7.40(b)(71) <b>Pajaro River</b> (Monterey, Santa Clara, Santa Cruz and San Benito cos.) from mouth to Uvas Creek. Also see Section 8.00(c)(5) Low-Flow Restrictions.	Dec. 1 through Mar. 7, but only on Sat., Sun., Wed., legal holidays and opening and closing days. Only barbless hooks may be used.	2 hatchery trout or hatchery steelhead**. 4 hatchery trout or hatchery steelhead** in possession.
7.40(b)(72) <b>Upper Penitencia Creek</b> (Santa Clara Co.) a tributary to Coyote Creek. Also see Section 8.00(c) Low-Flow Restrictions.	Closed to all fishing all year.	
7.40(b)(73) <b>Pescadero Creek</b> (San Mateo Co.) from mouth to the Stage Road bridge at Pescadero. Also see Section 8.00(c)(2) Low-Flow Restrictions.	Dec. 1 through Mar. 7, but only on Sat., Sun., Wed., legal holidays and opening and closing days. Only barbless hooks may be used.	2 hatchery trout or hatchery steelhead**. 4 hatchery trout or hatchery steelhead** in possession.
7.40(b)(74) <b>Pescadero Creek</b> tributaries and main stem above the Stage Road bridge at Pescadero (Santa Clara and San Mateo cos.).	Closed to all fishing all year.	
7.40(b)(75) <b>Pinole Creek</b> (Contra Costa Co.) and tributaries.	Closed to all fishing all year.	
7.40(b)(76) <b>Redwood Creek</b> and tidewaters (Marin Co.).	Closed to all fishing all year.	
7.40(b)(77) <b>Redwood Creek</b> (Humboldt Co.). Also see Section 8.00(a) Low-Flow Restrictions.		
(A) Redwood Creek main stem, within a radius of 200 yards of its mouth.	Jan. 1 through Mar. 31. Only artificial lures with barbless hooks may be used.	2 hatchery trout or hatchery steelhead**. 4 hatchery trout or hatchery steelhead** in possession.
(B) Redwood Creek main stem, from 200 yards above the mouth to the mouth of Prairie Creek.	Fourth Sat. in May through Mar. 31. Only barbless hooks may be used.	2 hatchery trout or hatchery steelhead**. 4 hatchery trout or hatchery steelhead** in possession.
(C) Redwood Creek main stem, from the mouth of Prairie Creek to the mouth of Bond Creek.	Fourth Sat. in May through Mar. 31. Only artificial lures with barbless hooks may be used.	2 hatchery trout or hatchery steelhead**. 4 hatchery trout or hatchery steelhead** in possession.

## 7.40 (b) ALPHABETICAL LIST OF HATCHERY TROUT, HATCHERY STEELHEAD, AND SALMON WATERS WITH SPECIAL FISHING REGULATIONS

Body of Water	Open Season and Special Restrictions	Daily Bag and Possession Limit
(D) Redwood Creek and tributaries, above the mouth of Bond Creek.	Closed to all fishing all year.	
7.40(b)(78) <b>Russian Gulch</b> and tributaries (Sonoma Co.). Main stem below the confluence of the East Branch. Also see Section 8.00(b) Low-Flow Restrictions.	Fourth Sat. in May through Mar. 31. Only artificial lures with barbless hooks may be used from the fourth Sat. in May through Oct. 31. Only barbless hooks may be used from Nov. 1 through Mar. 31.	2 hatchery trout or hatchery steelhead**. 4 hatchery trout or hatchery steelhead** in possession.
7.40(b)(79) <b>Russian River</b> and tributaries (Sonoma and Mendocino cos.). Also see Section 8.00(b) Low- Flow Restrictions.		
(A) Russian River main stem below the confluence of the East Branch Russian River.	All year. Only artificial lures with barbless hooks may be used from Apr. 1 through Oct. 31 Only barbless hooks may be used from Nov. 1 through Mar. 31.	2 hatchery trout or hatchery steelhead**. 4 hatchery trout or hatchery steelhead** in possession.
(B) Russian River main stem above the confluence of the East Branch and all River tributaries. (See Laguna de Santa Rosa subsection (b)(52) and Santa Rosa Creek subsection (b)(98) for non-salmonids only.)	Closed to all fishing all year.	
(C) Russian River within 250 feet of the Healdsburg Memorial Dam.	Closed to all fishing all year.	
7.40(b)(80) <b>Sacramento River</b> and tributaries below Keswick Dam (Butte, Colusa, Contra Costa, Glenn, Sacramento, Shasta, Solano, Sutter, Tehama and Yolo cos.). (Central Valley Water - regulation pending review, planned effective date before or on July 16, 2021)		
(A) Sacramento River from Keswick Dam to 650 feet below Keswick Dam.	Closed to all fishing all year.	
(B) Sacramento River from 650 feet below Keswick Dam to the Deschutes Road bridge.		
1. Sacramento River from 650 feet below Keswick Dam to the Highway 44 bridge.	Closed to all fishing from Apr. 1 through Jul. 31.	
	Jan. 1 to Mar. 31. Only barbless hooks may be used.	2 hatchery trout or hatchery steelhead**. 4 hatchery trout or hatchery steelhead** in possession.
	Aug. 1 to Dec. 31. Only barbless hooks may be used.	2 hatchery trout or hatchery steelhead**. 4 hatchery trout or hatchery steelhead** in possession.

## 7.40 (b) ALPHABETICAL LIST OF HATCHERY TROUT, HATCHERY STEELHEAD, AND SALMON WATERS WITH SPECIAL FISHING REGULATIONS

<i>Body of Water</i>	<i>Open Season and Special Restrictions</i>	<i>Daily Bag and Possession Limit</i>
2. Sacramento River from the Highway 44 bridge to the Deschutes Road bridge.	All year. Only barbless hooks may be used.	2 hatchery trout or hatchery steelhead**. 4 hatchery trout or hatchery steelhead** in possession.
(C) Sacramento River from the Deschutes Road bridge to the Red Bluff Diversion Dam.	Jan. 1 through Jul. 31.	2 hatchery trout or hatchery steelhead**. 4 hatchery trout or hatchery steelhead** in possession.
	Aug. 1 through Dec. 31.	2 hatchery trout or hatchery steelhead**. 4 hatchery trout or hatchery steelhead** in possession. 2 Chinook Salmon. 4 Chinook Salmon in possession.
(D) Sacramento River from the Red Bluff Diversion Dam to the Highway 113 bridge near Knights Landing.	Jan. 1 through Jul. 15.	2 hatchery trout or hatchery steelhead**. 4 hatchery trout or hatchery steelhead** in possession.
	Jul. 16 through Dec. 16.	2 hatchery trout or hatchery steelhead**. 4 hatchery trout or hatchery steelhead** in possession. 2 Chinook Salmon. 4 Chinook Salmon in possession.
	Dec. 17 through Dec. 31.	2 hatchery trout or hatchery steelhead**. 4 hatchery trout or hatchery steelhead** in possession.
7.40(b)(81) <b>Salinas River</b> and tributaries (Monterey and San Luis Obispo cos.). Also see Section 8.00(c) Low-Flow Restrictions.		
(A) The main stem Salinas River.	Dec. 1 through Mar. 7, but only on Sat., Sun., Wed., legal holidays and opening and closing days. Only barbless hooks may be used.	2 hatchery trout or hatchery steelhead**. 4 hatchery trout or hatchery steelhead** in possession.

## 7.40 (b) ALPHABETICAL LIST OF HATCHERY TROUT, HATCHERY STEELHEAD, AND SALMON WATERS WITH SPECIAL FISHING REGULATIONS

<i>Body of Water</i>	<i>Open Season and Special Restrictions</i>	<i>Daily Bag and Possession Limit</i>
(B) All Salinas River tributaries upstream of Arroyo Seco River confluence (including the San Antonio River below San Antonio Reservoir and Dam, Paso Robles Creek and tributaries, Atascadero Creek, and Santa Margarita Creek and tributaries but excluding the Nacimiento River). See subsection (b)(67).	Last Sat. in Apr. through Nov. 15. Only barbless hooks may be used.	2 hatchery trout or hatchery steelhead**. 4 hatchery trout or hatchery steelhead** in possession.
7.40(b)(82) <b>Salmon Creek</b> and tributaries (Sonoma Co.). Also see Section 8.00(b) Low-Flow Restrictions.		
(A) Salmon Creek main stem below Highway 1.	Fourth Sat. in May through Mar. 31. Only artificial lures with barbless hooks may be used from the fourth Sat. in May through Oct. 31. Only barbless hooks may be used from Nov. 1 through Mar. 31.	2 hatchery trout or hatchery steelhead**. 4 hatchery trout or hatchery steelhead** in possession.
(B) Salmon Creek main stem above Highway 1 and all Salmon Creek tributaries.	Closed to all fishing all year.	
7.40(b)(83) <b>Salmon River</b> (Siskiyou Co.).	See Klamath River subsection (b)(50).	
7.40(b)(84) <b>San Benito River</b> and tributaries (San Benito Co.).	Last Sat. in Apr. through Nov. 15.	2 hatchery trout or hatchery steelhead**. 4 hatchery trout or hatchery steelhead** in possession.
7.40(b)(85) <b>San Clemente Creek</b> and tributaries (Monterey Co.) except for Trout Lake.	Last Sat. in Apr. through Nov. 15 Only artificial lures with barbless hooks may be used.	2 hatchery trout or hatchery steelhead**. 4 hatchery trout or hatchery steelhead** in possession.
7.40(b)(86) <b>San Diego Creek</b> (Orange Co.). Downstream of the MacArthur Blvd. bridge only.	Sat. preceding Memorial Day through Nov. 30. Only artificial lures with barbless hooks may be used.	Open to fishing for non-salmonids only. Closed to the take of trout, and steelhead.
7.40(b)(87) <b>San Francisquito Creek</b> and tributaries (Santa Clara and San Mateo cos.)	Closed to all fishing all year.	
7.40(b)(88) <b>San Gabriel River</b> (Los Angeles and Orange cos.) Upstream of the Highway 22 bridge to the start of concrete-lined portion of the river channel.	Sat. preceding Memorial Day through Nov. 30. Only artificial lures with barbless hooks may be used.	Open to fishing for non-salmonids only. Closed to the take of trout and steelhead.

## 7.40 (b) ALPHABETICAL LIST OF HATCHERY TROUT, HATCHERY STEELHEAD, AND SALMON WATERS WITH SPECIAL FISHING REGULATIONS

<i>Body of Water</i>	<i>Open Season and Special Restrictions</i>	<i>Daily Bag and Possession Limit</i>
7.40(b)(89) <b>San Gregorio Creek</b> (San Mateo Co.) from the mouth to the Stage Road bridge at San Gregorio. Also see Section 8.00(c)(2) Low-Flow Restrictions.	Dec. 1 through Mar. 7, but only on Sat., Sun., Wed., legal holidays and opening and closing days. Only barbless hooks may be used.	2 hatchery trout or hatchery steelhead**. 4 hatchery trout or hatchery steelhead** in possession.
7.40(b)(90) <b>San Joaquin River</b> (Fresno, Madera, Merced, San Joaquin, and Stanislaus cos.).		
(A) From Friant Dam downstream to the Highway 140 bridge.	All year.	2 hatchery trout or hatchery steelhead**. 4 hatchery trout or hatchery steelhead** in possession.
(B) From the Highway 140 bridge downstream to the Interstate Highway 5 bridge at Mossdale.	All year.	2 hatchery trout or hatchery steelhead**. 4 hatchery trout or hatchery steelhead** in possession.
7.40(b)(91) <b>San Juan Creek</b> main stem (Orange Co.).	Closed to all fishing all year.	
7.40(b)(92) <b>San Lorenzo River</b> (Santa Cruz Co.) from the mouth to the Lomond Street bridge in the town of Boulder Creek. Also see Section 8.00(c) Low-Flow Restrictions.	Dec. 1 through Mar. 7, but only on Sat., Sun., Wed., legal holidays and opening and closing days. Only barbless hooks may be used.	2 hatchery trout or hatchery steelhead**. 4 hatchery trout or hatchery steelhead** in possession.
7.40(b)(93) <b>San Luis Obispo Creek</b> (San Luis Obispo Co.) from mouth to the first and most southwestern Highway 1/101 bridge.	Dec. 1 through Mar. 7, but only Sat., Sun., Wed., legal holidays and opening and closing days. Only barbless hooks may be used.	2 hatchery trout or hatchery steelhead**. 4 hatchery trout or hatchery steelhead** in possession.
7.40(b)(94) <b>San Luis Rey River</b> (San Diego Co.).	Closed to all fishing all year.	
7.40(b)(95) <b>San Mateo Creek</b> and tributaries downstream from the falls between the Tenaja Road crossing and Fisherman's Camp (San Diego and Riverside cos.).	Closed to all fishing all year.	
7.40(b)(96) <b>San Simeon Creek</b> (San Luis Obispo Co.) from mouth to the pedestrian bridge in San Simeon Beach State Park.	Dec. 1 through Mar. 7, but only Sat., Sun., Wed., legal holidays and opening and closing days. Only barbless hooks may be used.	2 hatchery trout or hatchery steelhead**. 4 hatchery trout or hatchery steelhead** in possession.
7.40(b)(97) <b>Santa Margarita River</b> and tributaries downstream from the Interstate Highway 15 bridge (San Diego and Riverside cos.).	Closed to all fishing all year.	

## 7.40 (b) ALPHABETICAL LIST OF HATCHERY TROUT, HATCHERY STEELHEAD, AND SALMON WATERS WITH SPECIAL FISHING REGULATIONS

<i>Body of Water</i>	<i>Open Season and Special Restrictions</i>	<i>Daily Bag and Possession Limit</i>
7.40(b)(98) <b>Santa Rosa Creek</b> (Sonoma Co. tributary to Russian River) from Laguna de Santa Rosa to Highway 12 bridge.	Last Sat. in Apr. through Nov. 15.	Open to fishing for non-salmonids only. Closed to the take of trout, and steelhead.
7.40(b)(99) <b>Santa Ynez River</b> and tributaries downstream from Bradbury Dam (Santa Barbara Co.).	Closed to all fishing all year.	
7.40(b)(100) <b>Scott Creek</b> (Santa Cruz Co.) from mouth to confluence with Big Creek. Also see Section 8.00(c)(3) Low- Flow Restrictions.	Dec. 1 through Mar. 7, but only Sat., Sun., Wed., legal holidays and opening and closing days. Only barbless hooks may be used.	0 trout
7.40(b)(101) <b>Scott River</b> (Siskiyou Co.).	See Klamath River subsection (b)(50).	
7.40(b)(102) <b>See Canyon Creek</b> (San Luis Obispo Co.).	Closed to all fishing all year.	
7.40(b)(103) <b>Shasta River</b> (Siskiyou Co.).	See Klamath River subsection (b)(50).	
7.40(b)(104) <b>Sisquoc River</b> and tributaries (Santa Barbara Co.).	Closed to all fishing all year.	
7.40(b)(105) <b>Smith River</b> (Del Norte Co.) Yearly limits apply for entire river.	Section 8.00 Low-Flow Restrictions, also apply.	
(A) Main stem from the mouth to confluence of Middle and South forks. Also see Section 8.00(a)(7) Low-Flow Restrictions.	Fourth Sat. in May through Apr. 30. Only artificial lures with barbless hooks may be used from the fourth Sat. in May through Aug. 31. Only barbless hooks may be used from Sep. 1 through Apr. 30.	2 hatchery trout or hatchery steelhead**. 4 hatchery trout or hatchery steelhead** in possession. 2 Cutthroat Trout minimum size limit: 10 inches total length. 1 Chinook Salmon and no more than 5 wild Chinook Salmon* over 22 inches per year.
(B) Middle Fork Smith River		
1. From mouth to Patrick Creek Also see Section 8.00(a)(7) Low-Flow Restrictions.	Fourth Sat. in May through Apr. 30. Only artificial lures with barbless hooks may be used from the fourth Sat. in May through Aug. 31. Only barbless hooks may be used from Sep. 1 through Apr. 30.	2 hatchery trout or hatchery steelhead**. 4 hatchery trout or hatchery steelhead** in possession. 2 Cutthroat Trout minimum size limit: 10 inches total length. 1 Chinook Salmon and no more than 5 wild Chinook Salmon* over 22 inches per year.



## 7.40 (b) ALPHABETICAL LIST OF HATCHERY TROUT, HATCHERY STEELHEAD, AND SALMON WATERS WITH SPECIAL FISHING REGULATIONS

<i>Body of Water</i>	<i>Open Season and Special Restrictions</i>	<i>Daily Bag and Possession Limit</i>
2. Above the mouth of Patrick Creek. Also see Section 8.00(a)(7) Low-Flow Restrictions.	Fourth Sat. in May through Oct. 31. Only artificial lures with barbless hooks may be used.	2 Cutthroat Trout minimum size limit: 10 inches total length. 2 hatchery trout or hatchery steelhead**. 4 hatchery trout or hatchery steelhead** in possession.
(C) South Fork Smith River		
1. From the mouth upstream approximately 1,000 feet to the County Road (George Tryon) bridge and Craigs Creek to Jones Creek. Also see Section 8.00(a)(7) Low-Flow Restrictions.	Fourth Sat. in May through Apr. 30. Only artificial lures with barbless hooks may be used from the fourth Sat. in May through Aug. 31. Only barbless hooks may be used from Sep. 1 through Apr. 30.	2 hatchery trout or hatchery steelhead**. 4 hatchery trout or hatchery steelhead** in possession. 2 Cutthroat Trout minimum size limit: 10 inches total length. 1 Chinook Salmon and no more than 5 wild Chinook Salmon* over 22 inches per year.
2. From the George Tryon bridge upstream to the mouth of Craigs Creek. Also see Section 8.00(a)(7) Low-Flow Restrictions.	Closed to all fishing all year.	
3. Above the mouth of Jones Creek. Also see Section 8.00(a)(7) Low-Flow Restrictions.	Fourth Sat. in May through Oct. 31. Only artificial lures with barbless hooks may be used.	2 Cutthroat Trout minimum size limit: 10 inches total length. 2 hatchery trout or hatchery steelhead**. 4 hatchery trout or hatchery steelhead** in possession.
(D) North Fork Smith River.		
1. From the mouth to Stony Creek. Also see Section 8.00(a)(7) Low-Flow Restrictions.	Fourth Sat. in May through Mar. 31. Only artificial lures with barbless hooks may be used from the fourth Sat. in May through Aug. 31. Only barbless hooks may be used from Sep. 1 through Mar. 31.	2 hatchery trout or hatchery steelhead**. 4 hatchery trout or hatchery steelhead** in possession. 2 Cutthroat Trout minimum size limit: 10 inches total length. 1 Chinook salmon and no more than 5 wild Chinook salmon* over 22 inches per year.

## 7.40 (b) ALPHABETICAL LIST OF HATCHERY TROUT, HATCHERY STEELHEAD, AND SALMON WATERS WITH SPECIAL FISHING REGULATIONS

<i>Body of Water</i>	<i>Open Season and Special Restrictions</i>	<i>Daily Bag and Possession Limit</i>
2. Above the mouth of Stony Creek.	Fourth Sat. in May through Oct. 31. Only artificial lures with barbless hooks may be used.	2 Cutthroat Trout minimum size limit: 10 inches total length. 2 hatchery trout or hatchery steelhead**. 4 hatchery trout or hatchery steelhead** in possession.
7.40(b)(106) <b>Sonoma Creek</b> and tributaries (Sonoma Co.).		
Sonoma Creek and tributaries between the Sonoma Creek seasonal waterfall in Sugarloaf Ridge State Park (located 0.2 miles upstream of the west end of the Canyon Trail) and the Highway 121 bridge. Note: Sonoma Creek below the Highway 121 bridge is tidewater, and is under regulations for the Ocean and San Francisco Bay District (see Sections 1.53 and 27.00).	Closed to all fishing all year.	
7.40(b)(107) <b>Soquel Creek</b> (Santa Cruz Co.) from mouth to confluence of East and West branch. Also see Section 8.00(c)(4) Low-Flow Restrictions.	Dec. 1 through Mar. 7, but only on Sat., Sun., Wed., legal holidays and opening and closing days. Only barbless hooks maybe used.	2 hatchery trout or hatchery steelhead**. 4 hatchery trout or hatchery steelhead** in possession.
7.40(b)(108) <b>Stanislaus River</b>		
(A) From Goodwin Dam downstream to the Highway 120 bridge in Oakdale.	Jan. 1 through Oct. 31. Only artificial lures with barbless hooks may be used.	2 hatchery trout or hatchery steelhead**. 4 hatchery trout or hatchery steelhead** in possession.
(B) From the Highway 120 bridge in Oakdale to the mouth.	Jan. 1 through Oct. 31. Bait may be used from Jan. 1 through Oct. 31. However, from Apr. 1 through the Fri. preceding the fourth Sat. in May, bait may be used only with single hooks having a gap between 1/2 and 1 inch, or with multiple hooks having a gap between 1/4 and 1/2 inch.	2 hatchery trout or hatchery steelhead**. 4 hatchery trout or hatchery steelhead** in possession.
7.40(b)(109) <b>Stevens Creek</b> (Santa Clara Co.) downstream of Stevens Reservoir.	Last Sat. in Apr. through Nov. 15. Only artificial lures with barbless hooks may be used.	2 hatchery trout or hatchery steelhead**. 4 hatchery trout or hatchery steelhead** in possession.

## 7.40 (b) ALPHABETICAL LIST OF HATCHERY TROUT, HATCHERY STEELHEAD, AND SALMON WATERS WITH SPECIAL FISHING REGULATIONS

<i>Body of Water</i>	<i>Open Season and Special Restrictions</i>	<i>Daily Bag and Possession Limit</i>
7.40(b)(110) <b>Stone Lagoon</b> (Humboldt Co.).	All year. Only artificial lures with barbless hooks may be used. Cutthroat Trout minimum size limit: 14 inches.	2 Cutthroat Trout 2 hatchery trout or hatchery steelhead**. 4 hatchery trout or hatchery steelhead** in possession.
7.40(b)(111) <b>Ten Mile River</b> (Mendocino Co.). Also see Section 8.00(b)(1) Low-Flow Restrictions. Ten Mile River main stem below the confluence with the Ten Mile River North Fork, and the Ten Mile River North Fork below the confluence with Bald Hill Creek.	Fourth Sat. in May through Mar. 31. Only artificial lures with barbless hooks may be used from the fourth Sat. in May through Oct 31. Only barbless hooks may be used from Nov. 1 through May 31.	2 hatchery trout or hatchery steelhead**. 4 hatchery trout or hatchery steelhead** in possession.
7.40(b)(112) <b>Topanga Canyon Creek</b> and tributaries (Los Angeles Co.).	Closed to all fishing all year.	
7.40(b)(113) <b>Trabuco Creek</b> (a.k.a. Arroyo Trabuco Creek) (Orange Co.). Downstream of the Interstate Highway 5 bridge to the confluence with San Juan Creek	Closed to all fishing all year.	
7.40(b)(114) <b>Trinity River</b> and tributaries downstream of Lewiston Dam.	See Klamath River subsection (b)(50).	
7.40(b)(115) <b>Tuolumne River</b> (Stanislaus and Tuolumne cos.).		
(A) From La Grange Dam downstream to Hickman Bridge.	Jan. 1 through Oct. 31. Only artificial lures with barbless hooks may be used.	2 hatchery trout or hatchery steelhead**. 4 hatchery trout or hatchery steelhead** in possession.
(B) From Hickman Bridge to the mouth.	Jan. 1 through Oct. 31. Bait may be used from Jan. 1 through Oct. 31. However, from Apr. 1 through the Fri. preceding the fourth Sat. in May, bait may be used only with single hooks having a gap between 1/2 and 1 inch, or with multiple hooks having a gap between 1/4 and 1/2 inch.	2 hatchery trout or hatchery steelhead**. 4 hatchery trout or hatchery steelhead** in possession.

## 7.40 (b) ALPHABETICAL LIST OF HATCHERY TROUT, HATCHERY STEELHEAD, AND SALMON WATERS WITH SPECIAL FISHING REGULATIONS

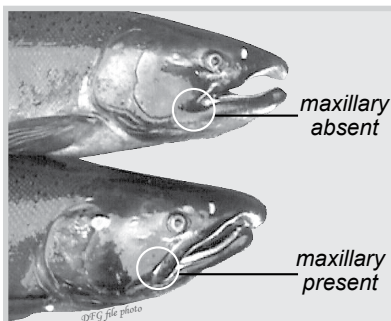
<i>Body of Water</i>	<i>Open Season and Special Restrictions</i>	<i>Daily Bag and Possession Limit</i>
7.40(b)(116) <b>Usal Creek</b> and tributaries (Mendocino Co.). Also see Section 8.00(b) Low-Flow Restrictions. Usal Creek main stem below the Usal-Shelter Cove Road	Fourth Sat. in May through Mar. 31. Only artificial lures with barbless hooks may be used from the fourth Sat. in May through Oct. 31. Only barbless hooks may be used from Nov. 1 through Mar. 31.	2 hatchery trout or hatchery steelhead**. 4 hatchery trout or hatchery steelhead** in possession.
7.40(b)(117) <b>Uvas or Carnadero Creek</b> (Santa Clara Co.) Also see Section 8.00(c)(5) Low-Flow Restrictions.		
(A) From Highway 152 bridge to Uvas Dam.	Closed to all fishing all year.	
(B) From mouth to Highway 152 bridge.	Dec. 1 through Mar. 7, but only on Sat., Sun., Wed., legal holidays and opening and closing days. Only barbless hooks may be used.	2 hatchery trout or hatchery steelhead**. 4 hatchery trout or hatchery steelhead** in possession.
7.40(b)(118) <b>Van Duzen River</b> (Humboldt Co.).	See Eel River subsection (b)(40) and Section 8.00(a) Low-Flow Restrictions.	
7.40(b)(119) <b>Waddell Creek</b> (Santa Cruz Co.) from mouth to Highway 1 bridge. Also see Section 8.00(c)(3) Low- Flow Restrictions.	Dec. 1 through Mar. 7, but only Sat., Sun., Wed., legal holidays and opening and closing days. Only barbless hooks may be used.	2 hatchery trout or hatchery steelhead**. 4 hatchery trout or hatchery steelhead** in possession.
7.40(b)(120) <b>Walker Creek</b> and tributaries (Marin Co.) Also see Section 8.00(b) Low-Flow Restrictions.		
(A) Walker Creek main stem below Highway 1.	Fourth Sat. in May through Mar. 31. Only artificial lures with barbless hooks may be used from the fourth Sat. in May through Oct. 31. Only barbless hooks may be used from Nov. 1 through Mar. 31.	2 hatchery trout or hatchery steelhead**. 4 hatchery trout or hatchery steelhead** in possession.
(B) Walker Creek main stem above Highway 1 and all Walker Creek tributaries.	Closed to all fishing all year.	
7.40(b)(121) <b>Walnut Creek</b> (Contra Costa Co.).		
(A) Upstream of the confluence with Grayson Creek.	Fourth Sat. in May through Mar. 31. Only artificial lure with barbless hooks may be used.	2 hatchery trout or hatchery steelhead**. 4 hatchery trout or hatchery steelhead** in possession.
(B) Downstream of the confluence with Grayson Creek.	All year.	2 hatchery trout or hatchery steelhead**. 4 hatchery trout or hatchery steelhead** in possession.

## 7.40 (b) ALPHABETICAL LIST OF HATCHERY TROUT, HATCHERY STEELHEAD, AND SALMON WATERS WITH SPECIAL FISHING REGULATIONS

<i>Body of Water</i>	<i>Open Season and Special Restrictions</i>	<i>Daily Bag and Possession Limit</i>
7.40(b)(122) <b>Wildcat Creek</b> and tributaries (Contra Costa Co.).	Closed to all fishing all year.	
7.40(b)(123) <b>Yuba River</b> (Yuba and Nevada cos.) from mouth to Englebright Dam.		
(A) From mouth to the Highway 20 bridge.	All year. Only artificial lures with barbless hooks may be used.	2 hatchery trout or hatchery steelhead**. 4 hatchery trout or hatchery steelhead** in possession.
(B) From Highway 20 bridge to Englebright Dam.	Dec. 1 through Aug. 31. Only artificial lures with barbless hooks may be used.	2 hatchery trout or hatchery steelhead**. 4 hatchery trout or hatchery steelhead** in possession.

## 7.50 ALPHABETICAL LIST OF TROUT WATERS WITH SPECIAL FISHING REGULATIONS

*See the 2021-2022 Freshwater Sport Fishing Regulations Booklet for the inland non-anadromous (trout) special regulations.*



**Maxillary or No Maxillary?**  
**Report the Presence or Absence of**  
**Maxillary on Coho Salmon**  
**when fishing the**  
**Klamath-Trinity River System**  
**see Section 5.87(c)**



**HELP PUT AN END TO**  
**POACHING AND POLLUTING.**  
**1-888-334-CalTIP**

(1-888-334-2258)

Now you can text anonymous tips, including photographs, to the CalTIP program. For more information, please visit [wildlife.ca.gov/Enforcement/CalTIP](https://wildlife.ca.gov/Enforcement/CalTIP)

# Report Card Requirements

*The below sections are replicated for convenience but there are no changes since release of the Freshwater Sport Fishing booklet in March 2021.*

## 1.73. SALMON

- (a) Salmon includes Chinook, coho, pink, chum, and sockeye salmon.
- (b) Any person in possession of a recreationally taken salmon with a missing adipose fin (the small, fleshy fin on the back of the fish between the back fin and tail) shall immediately relinquish the head of the salmon, upon request by an authorized agent or employee of the department, to facilitate the recovery of any coded-wire tag. The head may be removed by the fish owner or, if removed by the official department representative, the head shall be removed in a manner to minimize loss of salmon flesh and the salmon shall immediately be returned to the fish owner.

## 1.74. SPORT FISHING REPORT CARD AND TAGGING REQUIREMENTS.

- (a) Purpose. These regulations are designed to improve recreational fishing effort and catch information in some or all areas where the fisheries operate. Many of these species are of high commercial value, and therefore, additional enforcement mechanisms are needed to improve compliance with existing bag limits and other regulations, and to reduce the potential for poaching.
- (b) Report card requirements apply to any person fishing for or taking the following species regardless of whether a sport fishing license is required:

- (1) Salmon, in the anadromous waters of the Klamath, Trinity, and Smith river basins. Anadromous waters are defined in Section 1.04 of these regulations.
- (2) Steelhead trout.
- (3) White sturgeon.
- (4) Red abalone. [*Season closed through March 2026*]
- (5) California spiny lobster.
- (c) General Report Card Requirements.
  - (1) Any person fishing for or taking any of the species identified in this Section shall have in his immediate possession a valid non-transferable report card issued by the department for the particular species. See special exemption regarding possession of report cards for lobster divers in Section 29.91 of these regulations.
  - (2) All entries made on any report card or tag shall be legible and in indelible ink.
  - (3) A report card holder fishing with a one, two, or ten-day sport fishing license, may replace the expired fishing license without purchasing a new report card so long as the report card is still valid.
  - (4) Report cards are not transferable and shall not be transferred to another person. No person shall possess any report card other than his own.
  - (5) A person may only obtain one abalone report card and one sturgeon report card per report card period.
  - (6) Any report card holder who fills in all available lines on his steelhead, salmon or lobster report card shall return or report the card to the department pursuant to subsection 1.74(e) prior to purchasing a second card.
  - (7) Data recording and tagging procedures vary between report cards and species. See specific regulations in sections 5.79, 5.87, 5.88, 27.92, 29.16, and 29.91 that apply in addition to the regulations of this Section.
- (d) Report Card Return and Reporting Requirements.
  - (1) Report card holders shall return or report their salmon, steelhead, sturgeon, or abalone report cards to the department pursuant to subsection 1.74(e) by January 31 of the following year.
    - (a) Any report card holder who fails to return or report his salmon, steelhead, sturgeon, or abalone report card to the department by the deadline may be restricted from

### *Inland Salmon Informational Note*

All inland anadromous waters that are listed as "closed to take of salmon" in the district or special regulations are also closed to any catch and release fishing that results in hooking or attempting to hook a salmon.

As a reminder, Section 1.80 defines take as "Hunt, pursue, catch, capture or kill fish, amphibians, reptiles, mollusks, crustaceans or invertebrates, or attempting to do so."

There will be no allowance for any catch and release fishing that targets salmon when the river or stream is closed to salmon fishing.

obtaining the same card in a subsequent license year or may be subject to an additional fee for the issuance of the same card in a subsequent license year.

- (2) Report card holders shall return or report their lobster report cards pursuant to subsection 1.74(e) by April 30 following the close of the lobster season for which the card was issued.
  - (a) Any report card holder who fails to return or report his or her lobster report card by April 30 following the close of the lobster season specified on the card shall be subject to a nonrefundable non-return fee specified in Section 701, in addition to the annual report card fee, for the issuance of a lobster report card in the subsequent fishing season.
- (e) Report Card Return and Reporting Mechanisms:
  - (1) By mail or in person at the address specified on the card. A report card returned by mail shall be postmarked by the date applicable to that card as specified in subsection 1.74(d)(1) or 1.74(d)(2).
  - (2) Online through the department's license sales service website by the date applicable to that card as specified in subsection 1.74(d)(1), 1.74(d)(2), or 1.74(d)(3). Report card holders reporting online will be provided a confirmation number upon successful submission. The report card holder must record the provided confirmation number in the space provided on the report card and retain the report card for 90 days after the reporting deadline. Report cards submitted online must be surrendered to the department on demand.
  - (3) If a report card is submitted by mail and not received by the department, it is considered not returned unless the report card holder reports his or her report card as lost pursuant to subsection 1.74(f).
- (f) Lost report cards.
  - (1) Lobster, salmon, and steelhead. Notwithstanding subsection 1.74(c)(5), any report card holder who loses his or her report card during the report card period for which it is valid may purchase an additional report card by submitting payment to an authorized license agent or department license sales office. Catch information from the lost report card shall not be transferred to the new card. Information from lost lobster, salmon, and steelhead report cards shall be reported as specified in subsection 1.74(f)(3).
  - (2) Abalone and sturgeon. Notwithstanding subsection 1.74(c)(5), any report card holder who loses his or her report card during the period for which it is valid may purchase a replacement report card. The Department may issue a replacement report card for abalone and sturgeon upon completion of the following:
    - (a) Submitting an affidavit to any department license sales office containing all the information specified in subsection 1.74(f)(3)(B); and
    - (b) Submitting payment of the report card fee and the non-refundable replacement-processing fee specified in Section 701.
  - (c) Department staff shall enter the harvest information from the affidavit to the replacement report card.
  - (d) Based on the information provided on the affidavit, Department staff shall remove tags reported as used and issue only the number of tags that were reported as unused on the lost original report card.
  - (e) Report card holders shall verify that the harvest information has been accurately transferred from the affidavit to his or her replacement report card.
  - (f) The replacement report card shall be reported pursuant to the requirement for the original report card as specified in subsection 1.74(d). Note: the original report card should not be reported.
- (3) Reporting requirements. Except for lost abalone and sturgeon report cards for which a replacement card was purchased, all lost report cards shall be reported by the harvest report submission deadline date applicable to that card as specified in subsection 1.74(d)(1) or 1.74(d)(2) by one of the following methods:
  - (a) Online through the department's license sales service website; or
  - (b) Submitting an affidavit, signed under penalty of perjury, to a department license sales office containing the following information:
    1. The report card holder's full name, GOID#, and a statement confirming that the originally issued report card is lost and cannot be recovered.
    2. A statement containing the report card holder's best recollection of the prior catch records that were entered on the report card that was lost.
    3. A statement describing the factual circumstances surrounding the loss of the report card.

## **5.87. NORTH COAST SALMON REPORT CARD REQUIREMENT**

- (a) Report Card Required in Waters of the Klamath-Trinity River System and the Smith River. All anglers must have a North Coast Salmon Report Card in their possession while fishing for or taking salmon in waters of the Klamath-Trinity River System and the Smith River, and must complete and return the card pursuant to regulations in this Section and in Section 1.74.
- (b) Prior to beginning fishing activity, the cardholder shall record the month, day, and fishing location on the first available line on the report card.
- (c) For the Klamath-Trinity River System: Whenever the cardholder lands (either retains or releases) a Chinook salmon, the angler shall immediately record whether the fish was an adult or a jack, and whether the fish has an adipose fin present. Whenever the cardholder releases a coho salmon, the angler shall immediately record whether the maxillary is present or absent.
- (d) For the Smith River: Whenever the cardholder lands (either retains or releases) a Chinook salmon, the angler shall immediately record whether the fish was an adult or a jack, and whether the fish has an adipose fin or left ventral fin present.
- (e) Whenever the cardholder moves to another fishing location, the angler shall record the month, day, and location on the next line on the report card.
- (f) In the Klamath-Trinity River System and Smith River, a jack Chinook salmon is defined as any Chinook salmon that is less than 22 inches total length.
- (g) In the event an angler fills in all lines and returns a North Coast Salmon Report Card, an additional card may be purchased. See Section 1.74.
- (h) The annual fee for the North Coast Salmon Report Card is specified in Section 701, Title 14, CCR.

## **5.88. STEELHEAD REPORT AND RESTORATION CARD REQUIREMENTS FOR INLAND WATERS**

- (a) Steelhead Fishing Report and Restoration Card Required. All anglers must have a Steelhead Fishing Report and Restoration Card in their possession while fishing for or taking steelhead in anadromous waters, as defined in Section 1.04. Anglers must complete and return the card pursuant to regulations in this Section and in Section 1.74. For purposes of these regulations, a steelhead trout is defined as any rainbow trout greater than 16 inches in length found in anadromous waters.

- (b) Prior to beginning fishing activity, the cardholder must record the month, day, and location code on the first available line on the report card.
- (c) When a steelhead is retained, the cardholder must immediately fill in a circle indicating whether the fish is a wild fish or a hatchery fish.
- (d) When the cardholder moves to another location code, or finishes fishing for the day, the angler must immediately record on the card the number of wild and hatchery fish that were released from that location and the number of hours fished for steelhead to the nearest hour.
- (e) In the event an angler fills in all lines and returns a Steelhead Fishing Report and Restoration Card, an additional card may be purchased. See Section 1.74.
- (f) The annual fee for the Steelhead Fishing Report and Restoration Card is specified in Section 7380 of the Fish and Game Code.

## **5.89. SALMON.**

See Chapter 3, Trout, Salmon and Special Regulations.

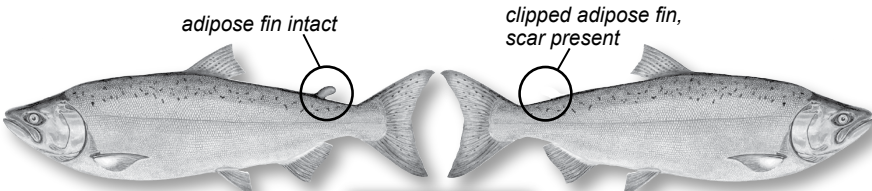
## **8.01. SPECIAL MEASURES FOR FISHERIES AT RISK**

- (a) The commission has established a quick response process to temporarily close fisheries experiencing degraded habitat quality and or quantity or extremely low population size within waters of the state. The criteria set forth in subsections (b) and (c) are intended to ensure that fisheries are protected under critical environmental conditions. These criteria will be monitored in statewide inland fisheries, and they will be evaluated on a water by water basis over time as conditions change.
- (b) The department may close to angling any waters of the state not currently listed in Section 8.00 of these regulations if the director, or his or her designee, finds one or more of the following conditions have been met:
  - (1) Water temperatures in occupied habitat exceed 70 degrees Fahrenheit for over eight hours a day for three consecutive days.
  - (2) Dissolved oxygen levels in occupied habitat drop below 5 mg/L for any period of time over two consecutive days.
  - (3) Fish passage is impeded or blocked for fish species that rely on migration as part of a life history trait.
  - (4) Water levels for ponds, lakes and reservoirs drop below 10 percent of their capacity.
  - (5) Adult breeding population levels are estimated to be below 50 individuals for a sub-population and 500 individuals for a standard population.



- (c) Waters closed pursuant to subsection (b) shall be reopened by the department when the director, or his or her designee, determines the initial closure-based criteria are no longer met and water temperatures do not exceed 70 degrees Fahrenheit for over eight hours a day for 14 consecutive days and dissolved oxygen remains above 5 mg/L for 14 consecutive days.
- (d) It shall be unlawful to take fish in any waters of the state closed to angling pursuant to this Section.
- (e) Notification of department actions.

- (1) The department shall maintain a list of closed waters of the state and update that list on Wednesday of each week by 1 p.m. In the event that water conditions change later in the week, the fishing status for each specific water will not change until the day following the next Wednesday. It shall be the responsibility of the angler to use the telephone number provided below or go to the department's website at [www.wildlife.ca.gov/Regulations](http://www.wildlife.ca.gov/Regulations) to obtain the current status of any water. The number to call for information is (916) 445-7600.

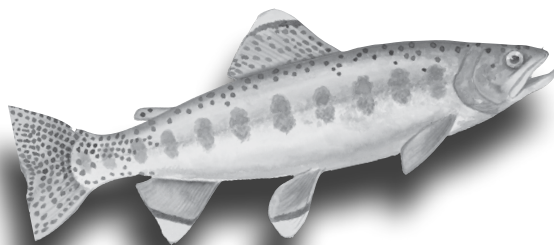


**Report Chinook Salmon With Clipped Adipose Fins**  
when fishing the Klamath-Trinity and Smith River Systems — see Section 5.87(c and d)

# PROTECT OUR RIVERS... ...PRESERVE OUR FISH

Rock Snot (Didymo) is an invasive freshwater alga that smothers streambeds and decreases fishing opportunities.

Rock Snot clings to fishing gear, waders, boots, and boats.



## Always CLEAN, DRAIN, & DRY.

Clean gear thoroughly before leaving every waterbody.

Freeze gear a minimum of eight hours at 26°F OR dry completely and wait an additional 24 hours prior to the next use. *For more information on invasive species visit [wildlife.ca.gov/Conservation/Invasives](http://wildlife.ca.gov/Conservation/Invasives)*