



A Focused Discussion for the Recreational Sector



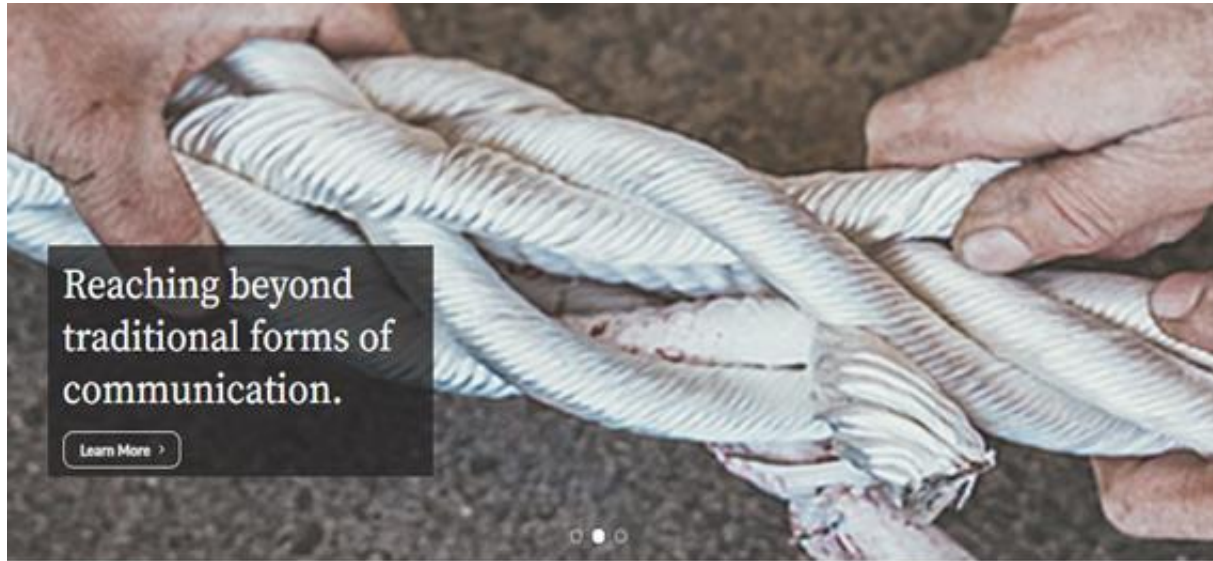
Exploring Scaled Management for the California Halibut Fishery Public Webinar Series

Thursday, August 12, 2021 | 4:00 PM - 6:00 PM PDT

Welcome! The webinar will begin momentarily. Please email Avery at avery@strategicearth.com or send a message in the chat if you are experiencing technical difficulties.



Third-party, Neutral Facilitation



Strategic Earth Consulting specializes in developing effective ways to link science and policy with community outreach and engagement.

We help our clients understand, navigate, and successfully implement effective science-based, policy-driven participatory processes. Our approach is multidisciplinary, highly collaborative, and focuses on the value of open lines of communication.



Webinar Considerations

- Technical difficulties viewing the screen share or calling in?
 - Email Avery at avery@strategiearth.com or send a message in the chat
- Webinar is being recorded and closed-captioned
- Poll and survey are optional and anonymous
- Welcome video on
- All participants are muted until facilitation team opens lines for discussion
- Raise hand (🙋) or wave to indicate you wish to share a question or comment
 - If unable, please use chat
 - You will be addressed at the appropriate time by the facilitation team

Zoom Reminders

- Chat: **For support needs and/or to submit a question/comment**
 - Click “Chat” in meeting controls (bottom panel in Zoom window)
- Raise Hand: **To indicate question or comment, desire to speak**
 - Click “Participants” in meeting controls and then “Raise Hand” button or
 - If you have “Reactions” in meeting controls, click and select the hand icon

Zoom Reminders, Continued

- Unmuting: **To speak**
 - Click “Accept” when the message “The host would like to unmute you” appears
- Renaming: **To help identify yourself and other participants**
 - Click “Participants” in meeting controls
 - Locate your name and click “More” and choose “Rename”
 - Enter your full name (first and last) and an identifier (CPFV, H&L, etc.)

Webinar Agreements

- Listen to build understanding and respect other perspectives
- Openly discuss ideas with others
- Explore ideas where common ground is the goal
- Contribute to an inclusive and collaborative environment
- Keep comments concise and focused
- Limit distractions and multi-tasking
- Address any concerns about the webinar with the facilitation team
- Personal attacks and disrespectful behavior will not be tolerated



Webinar Series

Exploring Scaled Management for the California Halibut Fishery Three-Part Public Webinar Series

- Focused Discussion for the Recreational Sector | Thursday, August 12, 2021
- Focused Discussion for the Commercial Sector | Thursday, September 16, 2021
- Webinar Highlights and Looking Ahead | Thursday, September 23, 2021

Welcome & Intentions

CDFW Team

Julia Coates
Miranda Haggerty
Kristine Lesyna
Kirsten Ramey
Paul Reilly
Craig Shuman
Travis Tanaka
Chuck Valle

Support Team

Resources Legacy Fund
Huff McGonigal

Strategic Earth Consulting
Avery Kaplan
Kelly Sayce
Sara Shen

Opening remarks by Craig Shuman, CDFW Marine Region Manager



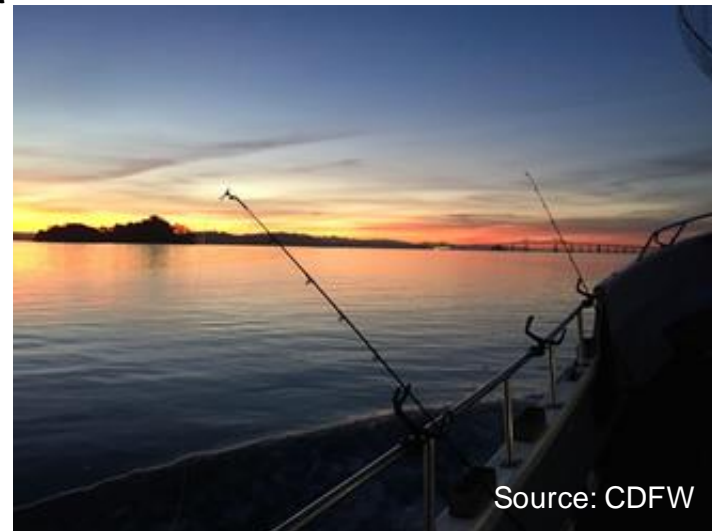
Webinar Goals

- Engage in a focused discussion about the California halibut recreational fishery to explore shared priorities and concerns for the long-term sustainability of the species, ecosystem, and fishing community.
- Share information about how to become involved in CDFW's scaled management process for California halibut.
- Learn of CDFW's current priorities for assessing and managing California halibut across sectors and statewide.
- Look ahead to CDFW's next steps in designing a science-based, stakeholder-involved scaled management process for California halibut.



Webinar Agenda

- Welcome & Intentions
 - Optional poll
- Understanding California Halibut Scaled Management
- Exploring Shared Priorities & Concerns
 - Small group discussions via breakout rooms
 - Sharing discussion highlights in plenary
- Looking Ahead
 - Optional survey





What to Expect

- CDFW is **not** proposing a Fishery Management Plan for the California halibut fishery at this time
- CDFW is **not** suggesting new regulations at this time
- CDFW **is** looking to learn from webinar participants about their priorities and concerns for the fishery and any questions regarding the scaled management approach

Understanding California Halibut Scaled Management

Presentation by Kirsten Ramey, CDFW Environmental Program Manager



Source: CDFW

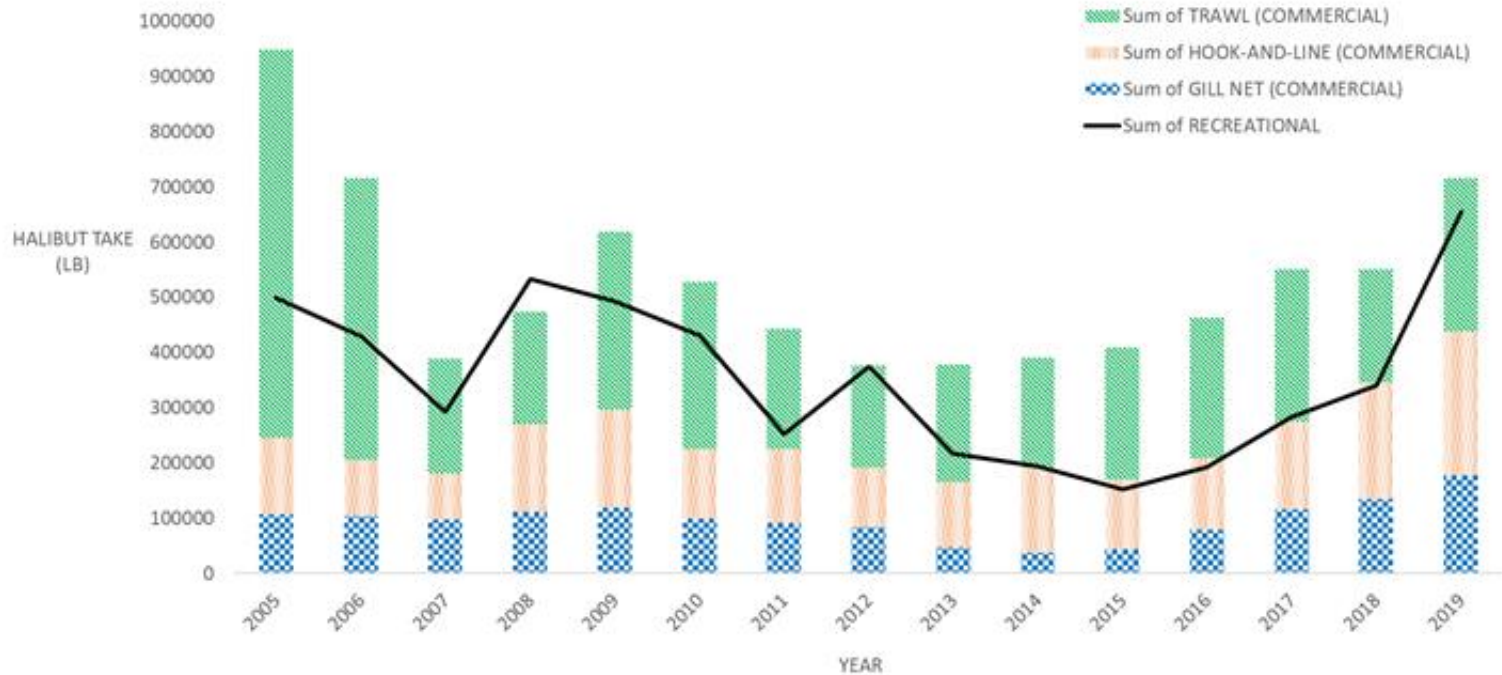


California Halibut at a Glance

- Occur statewide in California on shallow soft bottom habitat
- Reach 22 inches at 3 to 5 years, halibut greater than 45 inches/15 years are rare
- Broadcast spawners with high fecundity, egg/larval survival associated with water temperature
- Commercial fishery types: H&L, trawl, gill net/Recreational fishery types: H&L (CPFV, private boat, shore), spear
- Market is local to CA, primarily sold fresh in restaurants/grocery stores/farmers markets
- Current Management: Minimum legal size limits, bag/possession limits, gear/area restrictions, permits, season



Source: CDFW



Annual halibut take in pounds for the recreational fishery (estimated) and for the commercial fishery separated by gear type (MLDS and RecFIN, December 2020). Figure 2-17 from draft ESR.

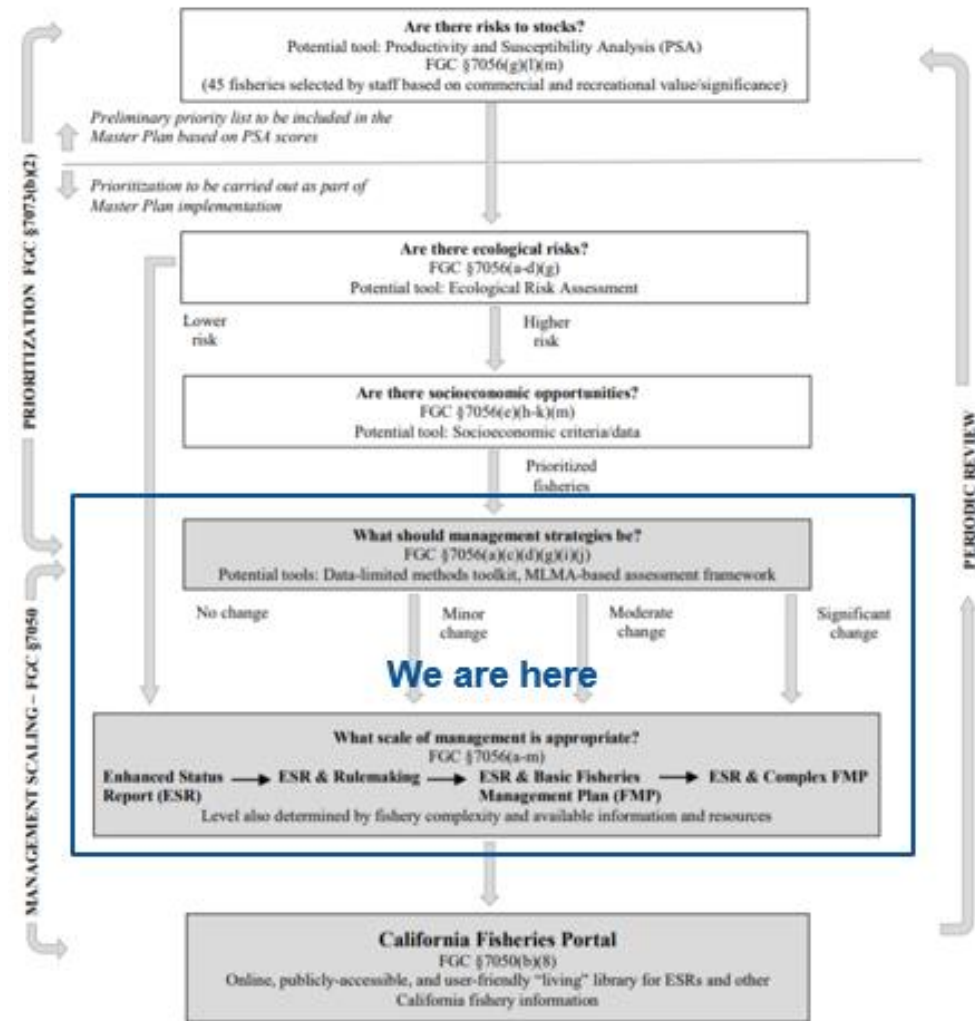


Why is California halibut a high priority?

- CDFW assessed the state's fisheries under the **2018 Master Plan for Fisheries** framework
- Through a **prioritization process**, California halibut was identified as a high priority fishery for management attention
 - Potential risks to bycatch species, including sub legal-sized halibut
 - Potential risk to the habitat



Framework for MLMA-based Management



- This framework has two components: prioritization and management scaling
- CDFW is implementing the Master Plan
 - Prioritization is complete
 - Management scaling is an ongoing effort across fisheries
 - CDFW is beginning with California halibut



What is scaled management?

- The complexity of a fishery, available information and resources, CDFW capacity and stakeholder interests — together with identified priority level — all contribute to determining **the degree, or scale**, of management needed to benefit the species, fishery, and ecosystem

What scale of management is appropriate?

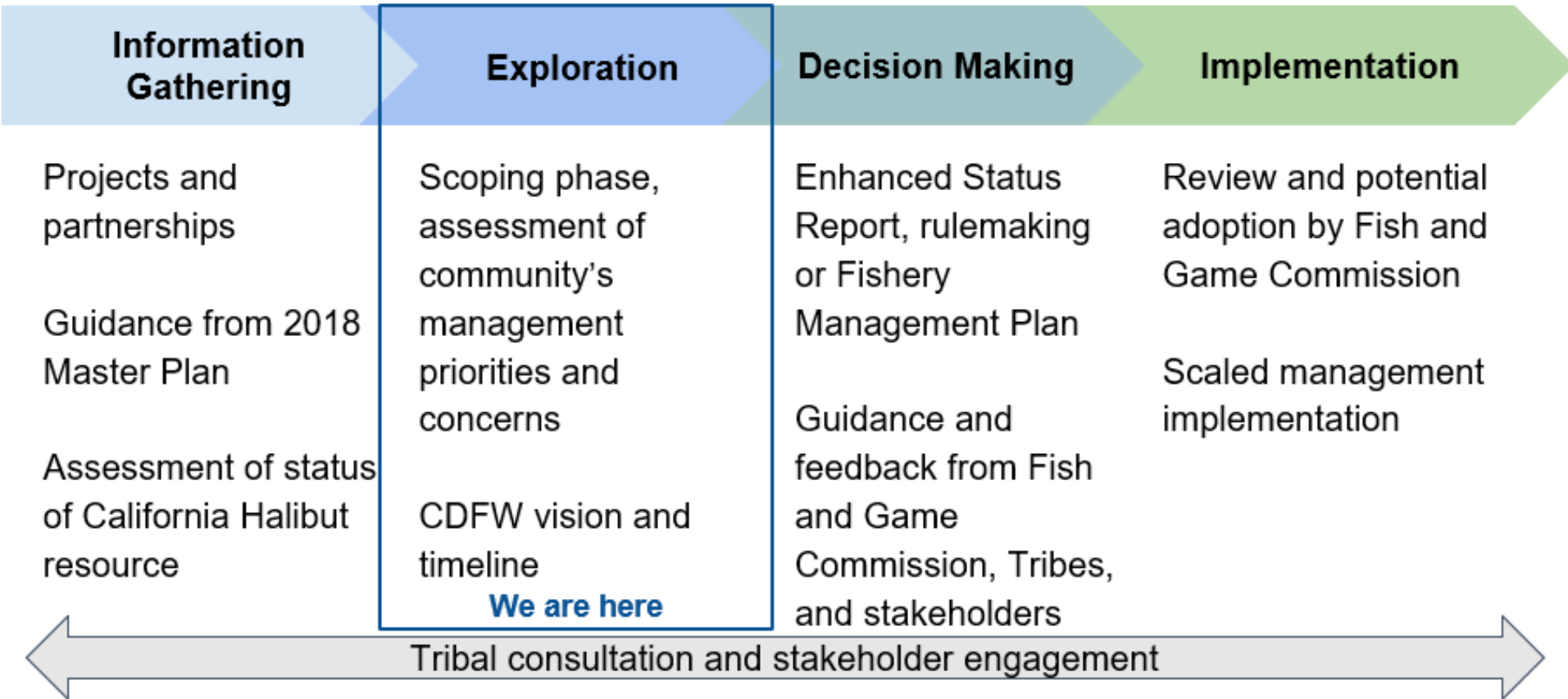
FGC §7056(a-m)

Enhanced Status Report (ESR) → ESR & Rulemaking → ESR & Basic Fisheries Management Plan (FMP) → ESR & Complex FMP

Level also determined by fishery complexity and available information and resources



Scaled Management Development Process





What We Know About the Fishery Across Sectors and Statewide

- Northern and southern stocks are inferred to be broadly sustainable at different levels
- Fresh halibut essential to local economies; local consumption and recreation
- Minimal impact of halibut fishing to habitat
- Current and anticipated climate change impacts
 - Latitudinal shifts, impacts to reproduction, prey availability, bycatch interactions, etc.
- Bycatch includes sensitive and non-target species
 - Sub-legal sized halibut are encountered by all sectors
 - Other bycatch species vary by sector, as do mortality rates of bycatch



CDFW Priorities for California Halibut Fishery

- Maximize fishing opportunities while upholding conservation objectives
- Determine the maximum sustainable yield and manage the fishery at or near maximum sustainable yield
- Maintain a healthy age structure for population
- Minimize bycatch to acceptable types and amounts
- Minimize threats to habitat
- Continue and expand upon data collection
- Integrate the knowledge, expertise, and needs of stakeholders into management



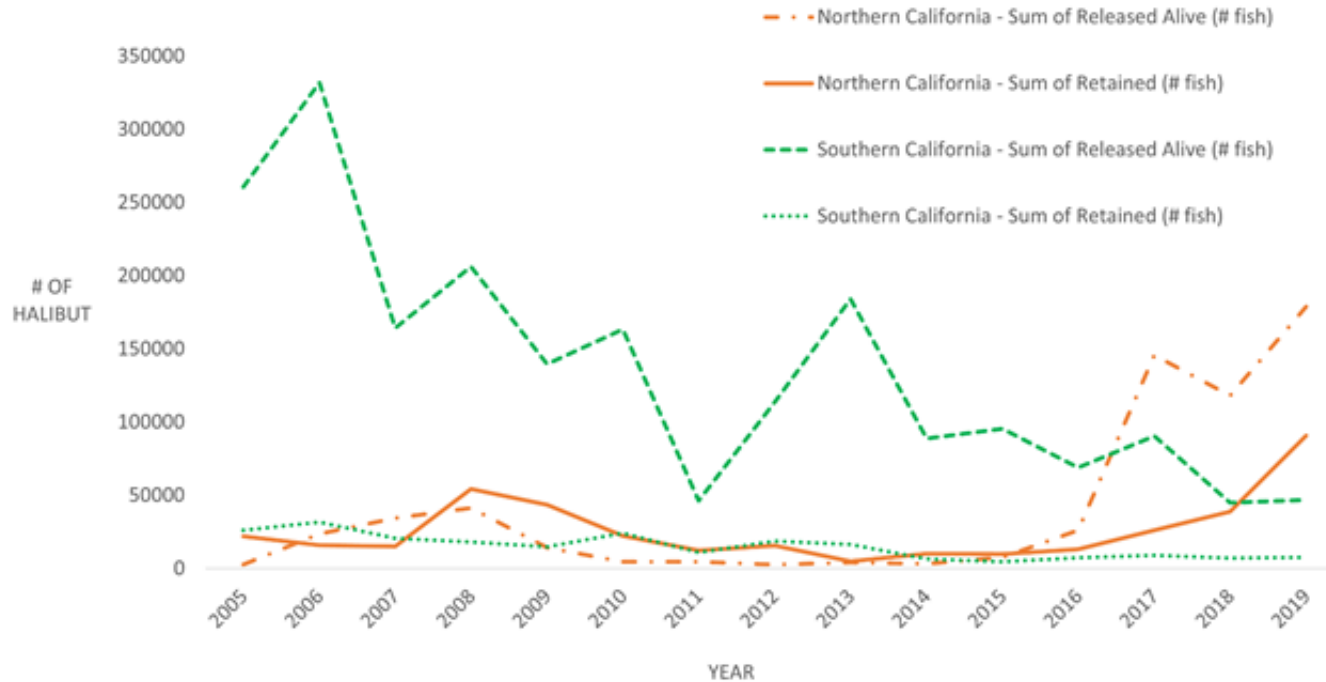
Source: www.romania2019.eu



Recreational Fishery Bycatch Definitions

- Bycatch: “Fish or other marine life that are taken in a fishery, but which are not the target of the fishery. Bycatch includes discards”
- Incidental catch: Fish caught incidentally during the pursuit of the primary target species, but legal and desirable to be kept for consumption”
- Acceptable bycatch considers legality of take, potential threat to sustainability, impacts to other fisheries and the ecosystem
- Guidance by Master Plan to determine acceptable bycatch

Recreational Fishery: Sublegal Halibut Bycatch



Annual CRFS estimates of kept and released halibut (number of fish) for all modes combined in northern and southern California. (RecFIN, December 2020). Figure 2-21 from draft ESR



Opportunities to Learn More

- Sustainability
 - Life history and catch (including sub-legals)
 - Recruitment and environment conditions
- Habitat
 - Habitat preferences and seasonal movement
- Bycatch
 - Quantity and species composition
 - Post-release mortality
 - Non-target species and sublegal bycatch



Source: CDFW




Opportunities to Learn More, Cont'd

- Climate Change
 - Biology and recruitment
 - Movement, population shifts
 - Bycatch
- Socioeconomics
 - Participation
 - Operations
 - Economic support



Source: CDFW

Questions?

- Raise hand () or wave to indicate you wish to share a question or comment
 - If unable, please use chat
 - You will be addressed at the appropriate time by the facilitation team
- Please ask clarifying questions only
 - Discussion and general questions are welcome in the next agenda item

Exploring Shared Priorities & Concerns

- Small Group Discussions
 - Discuss topical questions and share perspectives and questions with participants of similar backgrounds in breakout rooms
 - Breakout rooms are being recorded
 - Notes are being taken in a shared Google Document
- Large Group Discussion/ Plenary
 - Each breakout room with share discussion highlights
 - Address any questions and continue discussion



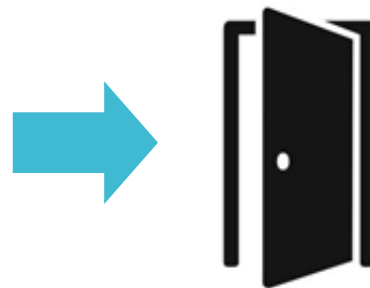
Small Group Discussions, Breakout Rooms

- ***Room 1: Commercial Passenger Fishing Vessel (CPFV) Owners and Operators***
 - Facilitation Team: Kristine Lesyna, Sara Shen, Chuck Valle
- ***Room 2: Environmental Governmental and Non-Governmental Organizations, and Native Nations***
 - Facilitation Team: Julia Coates, Paul Reilly, Huff McGonigal, Kirsten Ramey
- ***Room 3: Recreational Anglers (Including Spear, Shore, Pier, CPFV and Private Boat Customers)***
 - Facilitators: Travis Tanaka, Miranda Haggerty, Kelly Sayce



Joining Breakout Rooms

- If you have not been assigned to a breakout room, please let us know which is of most interest:
 - A message from the host will appear inviting you to join a breakout room
 - Click Join, then confirm by clicking Join once more



Discussion Questions

- How does California halibut contribute to your personal livelihood?
- Based on the definition within the MLMA, what does sustainability mean to you?
Based on your experience, is California halibut a sustainable fishery?
- How, if at all, is bycatch a concern for the California halibut fishery and/or your livelihood?
- How, if at all, are changing ocean conditions (in the past 20 years) impacting the California halibut fishery and/or your livelihood?
- Based on your understanding of the California halibut fishery, do you have recommendations related to the sustainability of the resource, bycatch, habitat, climate change, and/or socioeconomics?



Looking Ahead



Webinar Series

Exploring Scaled Management for the California Halibut Fishery Three-Part Public Webinar Series

- Focused Discussion for the Recreational Sector | Thursday, August 12, 2021
- Focused Discussion for the Commercial Sector | Thursday, September 16, 2021
- Webinar Highlights and Looking Ahead | Thursday, September 23, 2021



Webinar Series Outputs

Visit the CDFW 'California Halibut Scaled Management' webpage:
<https://wildlife.ca.gov/Conservation/Marine/CA-Halibut-Scaled-Management>

The following resources will be available to the public:

- Summary of key themes of the webinar series
- Agendas, powerpoint presentations, and recordings
- Frequently Asked Questions (FAQ) document, if needed
- Optional survey responses (Anonymous)

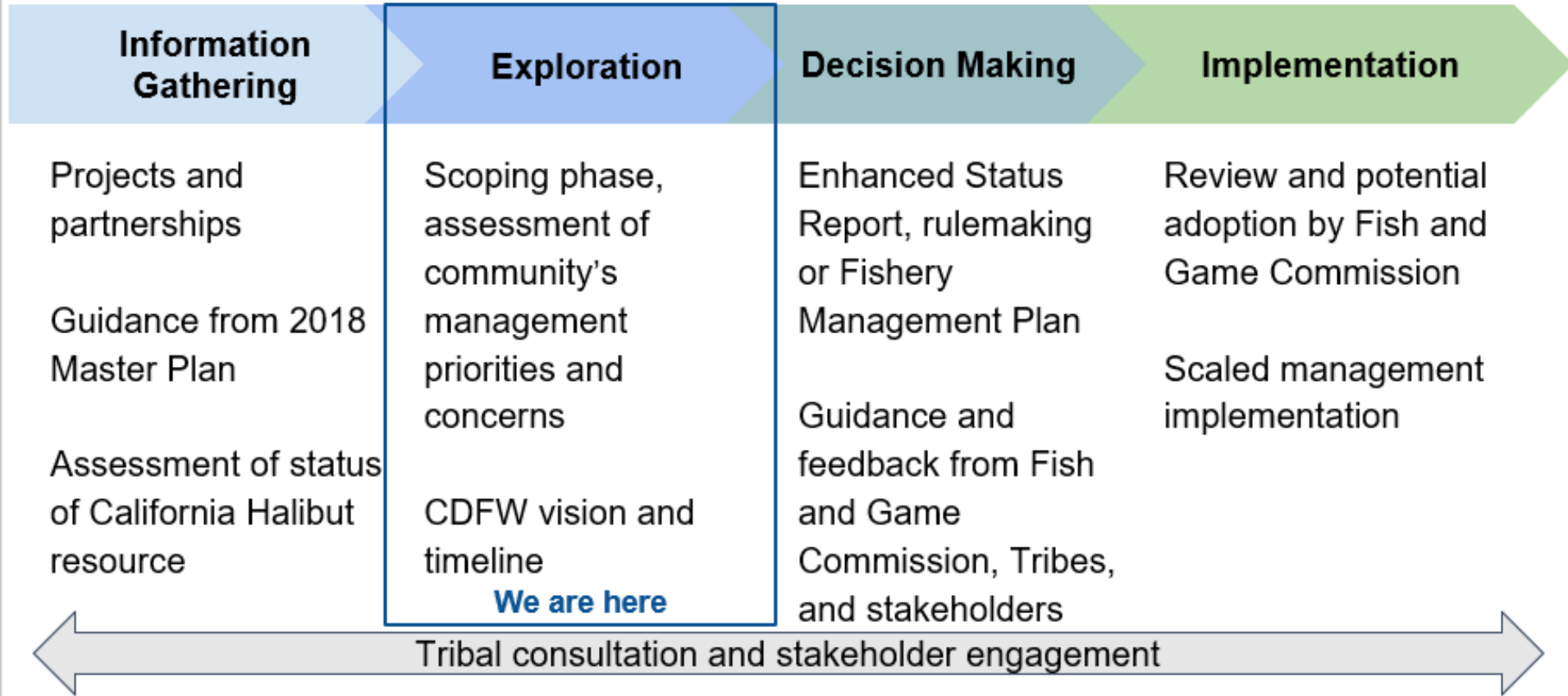


Share Your Feedback, Optional Survey

- We welcome constructive feedback on your webinar experience by completing the optional survey here: <https://forms.gle/X32oqX463uUor7vD8> by **Wednesday, September 1**
 - Survey responses are anonymous
 - Your feedback will help the Project Team to plan for upcoming webinars and continued scoping phase engagement efforts



Scaled Management Development Process



Thank You

Visit the CDFW 'California Halibut Scaled Management' webpage:
<https://wildlife.ca.gov/Conservation/Marine/CA-Halibut-Scaled-Management>

- To RSVP for this webinar series, email MLMAFisheriesMgmt@wildlife.ca.gov
- Connect with Kirsten Ramey, Marine Region Environmental Program Manager at Kirsten.Ramey@wildlife.ca.gov

