

U. S. Army Corps of Engineers American River Ecosystem Restoration Project

Presentation to
Lower American River Conservancy Advisory Committee
March 16,2022



Ecosystem Restoration Project

- Authorized by Congress in 2003 as part of a multi-objective improvement program for Folsom Dam and the Lower American River described in a feasibility study prepared by USACE in collaboration with SAFCA, California Department of Water Resources, and California Valley Flood Protection Board
- The authorized program calls for flood risk reduction to be achieved by raising Folsom Dam and ecosystem restoration to be achieved by:
 - Modifications to Folsom Dam's temperature control facilities (TCF) to better manage water temperature conditions affecting the salmon and steelhead fisheries in the Lower American River; and
 - Modifications to the landscape in the Woodlake and Bushy Lake/Cal Expo areas of the American River Parkway to enhance grassland, riparian forest and wetland habitats in these areas
- Ecosystem restoration is a primary USACE mission. In this instance, although covered by a single authorization, the TCF and landscape modifications are functionally independent and separable.
- The TCF modifications are currently being pursued in concert with the Folsom Dam Raise Project.
- Due to funding and organizational capacity constraints, the Woodlake and Bushy Lake landscape modifications will likely not be implemented for another 5 to 10 years if funding is provided.

Woodlake Area

Woodlake area owned by Sacramento County.

Existing conditions:

- Unusually high flood plain that infrequently receives overbank flows;
- Much of its original vegetation removed to make way for agriculture; and
- Dominated by nonnative invasive plant species.

Conceptual restoration plan includes:

- Maintaining existing high-quality habitat;
- Management of nonnative invasive plant species;
- Restoration of the hydrologic interaction between the river and the floodplain;
- Reestablish native grasslands; and
- Recontouring and establishment of riparian forest oak woodland and oak savanna.

Woodlake Area Map



Bushy Lake Area

Bushy Lake owned by the State of California (Cal Expo).

Existing conditions include unusually high floodplain and remnant topography of a planned golf course, including a lake feature – Bushy Lake – fed by pumped groundwater.

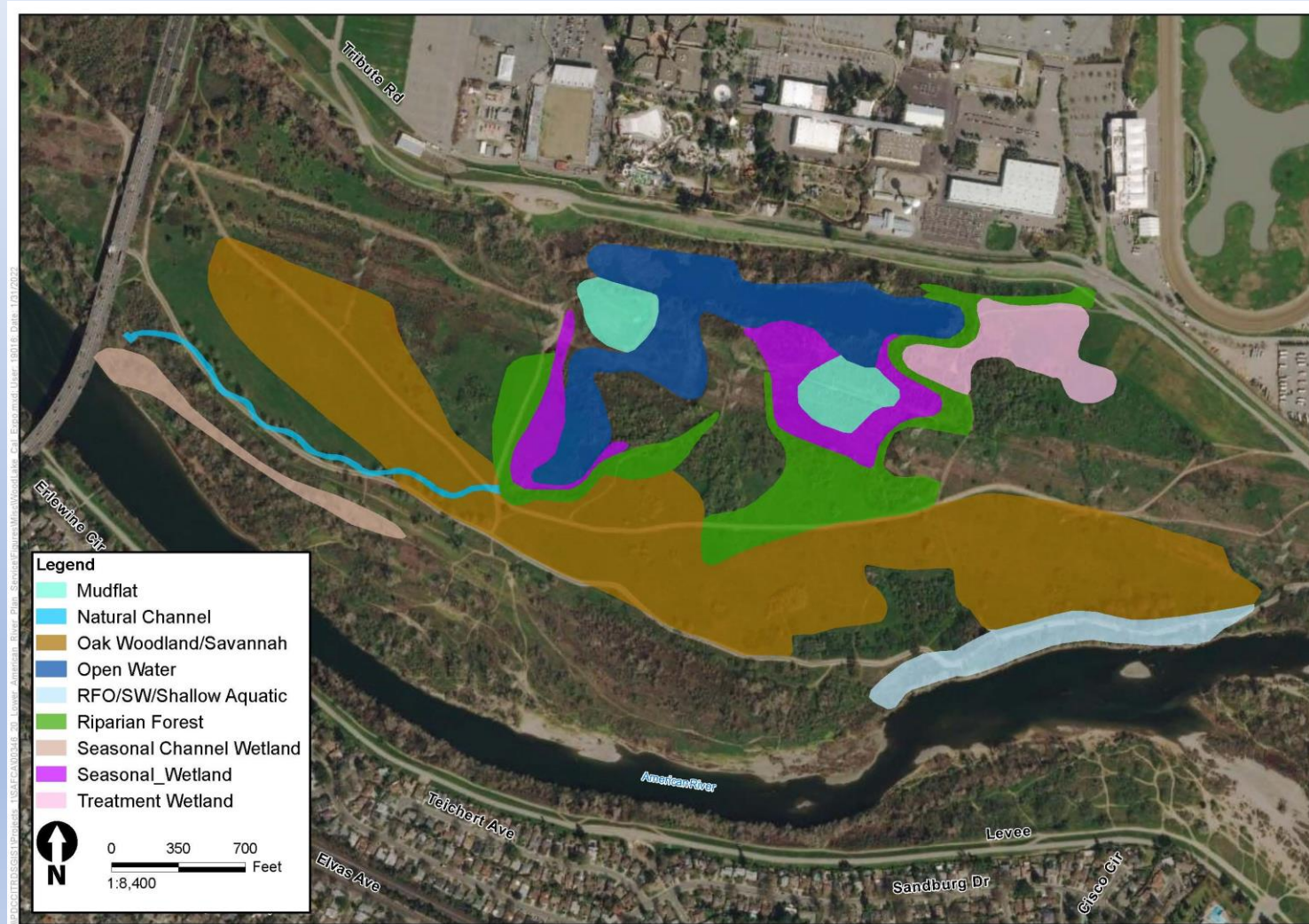
Conceptual restoration plan includes:

- Maintaining existing high-quality habitat;
- Addressing water quality issues in Bushy Lake;
- Management of nonnative invasive plant species;
- Creation of an ephemeral channel from the lake to convey high flows to the river;
- Terracing steep banks; and
- Planting riparian forest, oak woodland, and oak savanna plant species on newly graded site areas.

Requires integration with restoration planning and analysis being carried out by CSUS.



Bushy Lake Area Map



Path Forward

- TCF Modifications will likely be completed in the next 3 years
- Thereafter a federal funding commitment will be needed to proceed with the Woodlake and Bushy Lake landscape modifications
- These modifications are being referenced and accommodated in the Natural Resource Management Plan (NRMP) for the American River Parkway
- SAFCA remains committed to pursuing these modifications once the ongoing flood risk reduction program along the American and Sacramento Rivers is substantially completed
- Post-authorization studies will be required to account for landscape changes that have occurred since 2003 and to incorporate the policy recommendations of the NRMP
- State support for these projects could affect their readiness to move forward and their prospects for renewed federal funding