



Sausalito Community Boating Center - Expanding Public Recreation at Sausalito's Shoreline: Final Programmatic Report (AMENDED)

Recipient Organization/Agency: Cass Gidley Marina - Sausalito Community Boating Center

Date Submitted: 8/30/2021

Project Period: July 1, 2019 to February 26, 2022

Award Amount: \$175,000

Matching Contributions: \$144,000

Total Disbursements: \$175,000

Easygrants ID: 63901

1. Summary of Accomplishments

On behalf of everyone involved with the Sausalito Community Boating Center (SCBC)- thank you! We are pleased to submit this final progress report on our grant of \$175,000 from the Recreational Use Grant Program to the National Fish and Wildlife Foundation and Cosco Busan Oil Spill Trustee Council. With your support we have constructed a new public recreational boating and paddling facility along the Sausalito Shoreline. Once we are open, SCBC will provide affordable access to boats and the water, educational programs, a dock where the public can fish, and a connection to the local bay ecosystem.

To date we have completed all our major construction activities by completing our concrete abutment, installing our 80' ADA ramp, and constructing/improving 150' of docks with electrical, water, fire, and pump out systems. The recreational benefits provided by this project are yet to be realized as due to the pandemic we were not able to open in 2020 and now anticipate opening in 2022. During 2021, we will do a "soft opening". We expect that tremendous interest in this site exists as a facility to launch kayaks and paddleboards given the expansion of the Dunphy Park parking lot, in addition to the traditional boating activities that will be offered onsite.

2. Project Activities & Outcomes

Activities

Our construction work began with the installation of our concrete abutment that the ramp attaches to. With volunteer labor and NFWF funds for materials, we installed rebar, poured concrete, and attached the hardware that receives the ramp. On land, we began fire protection work to bring a 4" water line to the abutment, allowing us to bring water to the dock and hook up fire protection equipment.

Next, we ordered and installed the aluminum ramp that came from Seattle and was custom designed with decking that allows light to pass through to the water and support eel grass habitat. Prior to the ramp installation, we purchased material and constructed our lower docks which the ramp sets on. The lower docks were constructed from redwood and plastic floats. Our ramp was installed and attached to the lower docks.

Finally the dock infrastructure was constructed or improved and all docks were connected cohesively with fire, water, and pump out systems that were also connected to onshore infrastructure to allow for operations.

To complement this grant, SCBC was awarded a \$65,000 grant from the Bay Area Water Trail to install a lower floating dock section outfitted with two ADA options for launching kayaks and other small boats. With this grant we are able to ensure accessibility for all at our site and accommodate wheelchair users to independently launch kayaks.

We had anticipated that the completion of the construction elements would allow SCBC to commence operations. We have yet to commence operations and await final sign-offs from the City of Sausalito for our fire lines as well as a new requirement for a security gate and a related permit.

Benefits

As our facility has yet to be finalized we have not yet opened or started delivering on any of the recreational benefits described in our proposal. In 2022 SCBC will offer access and education for youth and the public to explore Richardson Bay on recreational boats (including paddleboards and kayaks), a connection to Sausalito's maritime heritage through traditional wooden boats, and opportunities to engage in principles of environmental stewardship. We have a robust program committee that meets biweekly and has developed courses, curriculum and activities that feature safe recreational boating in non-motorized small boats.

Due to the renovations at Dunphy park (adjacent to the SCBC site) and expanded parking area that was built during renovations the area is seeing more visitation than ever. Anecdotally more kayaks and paddleboards than ever are being launched at Dunphy Park which translates to increased demand and projected utilization for our facility.

3. The Future

The next phase of this project is opening and operating. We are excited to have literally laid the foundation with this grant to open and operate our community boating center!

4. Lessons Learned

Most of the greatest challenges associated with this park are related to the City of Sausalito and the pandemic. Due to the COVID pandemic our timeline was pushed back twice and it has also been hard to perform a construction project while demand for various trades we needed to accomplish our project was higher than ever in the area.

Also, as a lessee of the City of Sausalito our hands were tied as the city dealt with a homeless encampment at Dunphy Park (adjacent to our site). The City has now required we have a security gate installed prior to opening. Permits for the gate and other operations our permits were given additional scrutiny as our plans and timelines changed slightly once we were awarded the Water Trail grant. We worked closely with the city and remain to work towards full sign off on the project so the public can come out and enjoy the new docks.

5. Project Documents

Project photos included below.



Image 1: This photo depicts the end of the main aluminum ramp and wooden docks that were supported by this grant. The black surface of the aluminum ramp is a fiberglass grate allowing sunlight to feed the eelgrass habitat under the ramp. The ramp connects to the lower wooden docks which have an inset with a plastic non-motorized small boat launch (ADA accessible by the smaller aluminum ramp). The small ramp and plastic ADA lower launch were funded by Water Trail Grant. Further away, the wooden dock extending to the right (south dock) was rebuilt with funds from this grant, as were portions of the left dock (north dock) and the perpendicular dock connecting the two main docks. Prior to the grant, we had no ramp to access the docks. Now we have a terrific and long lasting ramp that's ADA accessible (Photo credit: Sausalito Community Boating Center).

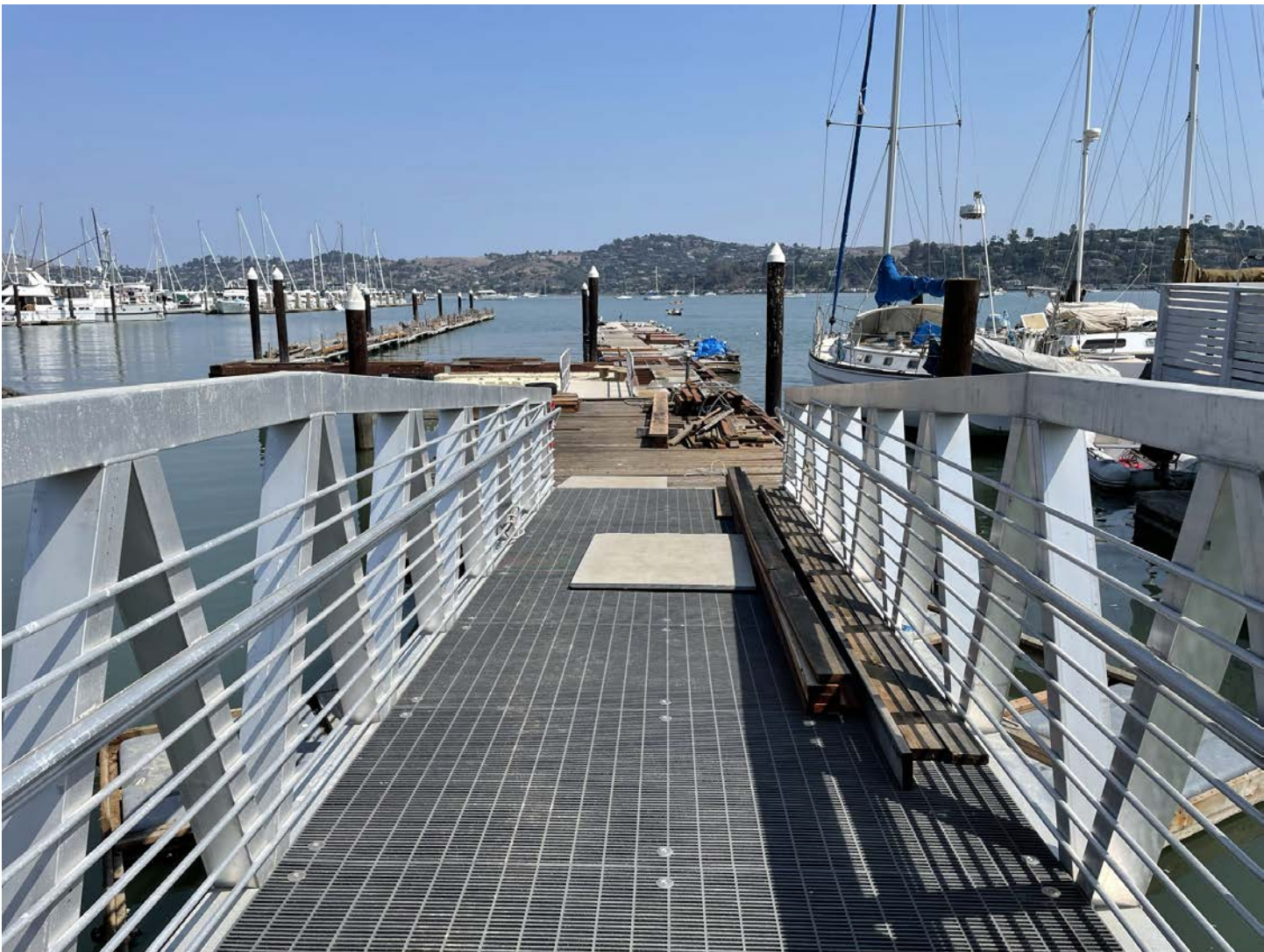


Image 2: The picture below captures the fiberglass grate of the ramp that allows sunlight to access the eelgrass habitat below the ramp (Photo credit: Sausalito Community Boating Center).



Image 3: This photo is a meeting of our ADA advisory group which brought in experts from the bay area disabled kayaking and sailing communities. They helped us design the lower plastic docks including the launching areas and a transfer bench system. This photo is while the project was a work in progress and the transfer bench (to transfer from wheelchair into kayak or small sailboat) was being completed. While funding from the NFWF and Cosco Busan Trustees were not applied directly to this aspect of the project, it was only because we received Cosco Busan funding that we were also able to complete this important aspect of our overall project design (Photo credit: Sausalito Community Boating Center).



Image 4: Photo of a small el-toro sailboard demonstrating the transfer bench steps. The gap between the plastic and wooden docks behind it is where the small aluminum ramp was placed (Photo credit: Sausalito Community Boating Center).



Image 5: Photo of kayaker practicing using the ADA accessible kayak launch. The docks floating in the background were temporarily used for installing dock infrastructure (Photo credit: Sausalito Community Boating Center).



Image 6: Photo of smaller aluminum ramp installed to access lower plastic docks. Other wooden docks were under construction at the time of this picture (Photo credit: Sausalito Community Boating Center).



Image 7: The North docks on the right were nearly finalized at this point with electrical and plumbing installed underneath the decking. New redwood decking was installed along with the dock infrastructure being composed of redwood and supported by this grant. The south docks (to the left) have pinniped protections installed (Photo credit: Sausalito Community Boating Center).

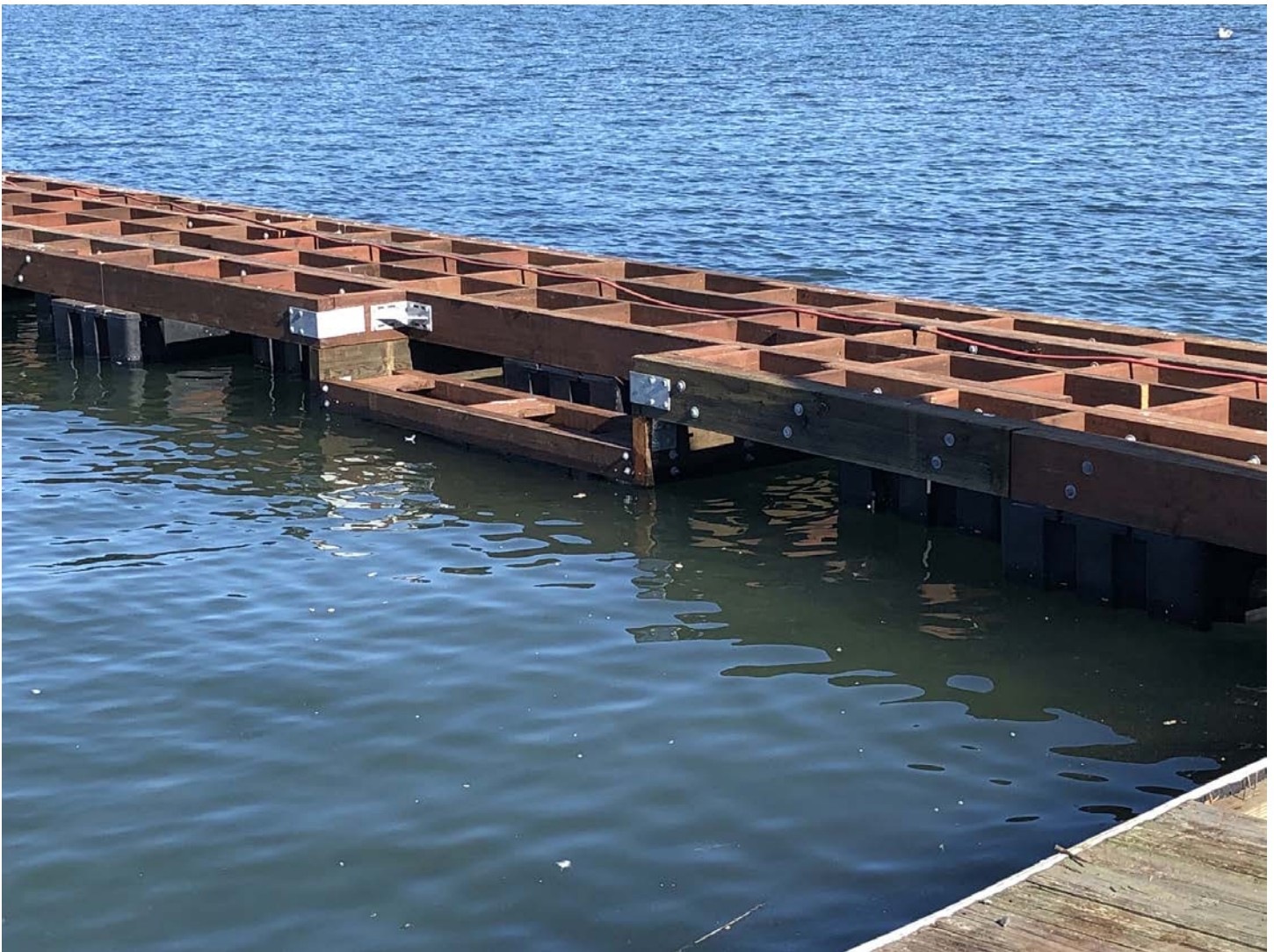


Image 8: This photo shows the underlying dock infrastructure and floats that were supported by this grant. The inset was created to allow for a lower freeboard launching area for kayaks. This provides kayakers without mobility barriers a dedicated space to launch without using the plastic docks and creates more access points for lower freeboard vessel loading and unloading (Photo credit: Sausalito Community Boating Center).



Image 9: South dock underlying infrastructure that was supported by this grant (Photo credit: Sausalito Community Boating Center).



Image 10: Redwood decking installed on the south dock (Photo credit: Sausalito Community Boating Center).

POSTING OF FINAL REPORT: *This report and attached project documents may be shared by the Foundation and any Funding Source for the Project via their respective websites. In the event that the Recipient intends to claim that its final report or project documents contains material that does not have to be posted on such websites because it is protected from disclosure by statutory or regulatory provisions, the Recipient shall clearly mark all such potentially protected materials as “PROTECTED” and provide an explanation and complete citation to the statutory or regulatory source for such protection.*