

Inyo rock daisy
(*Laphamia/Perityle inyoensis*)



Fish and Game Commission Meeting

August 17, 2022

Maria Jesus, petitioner

Photo by Cheryl Birker

Today's Presentation

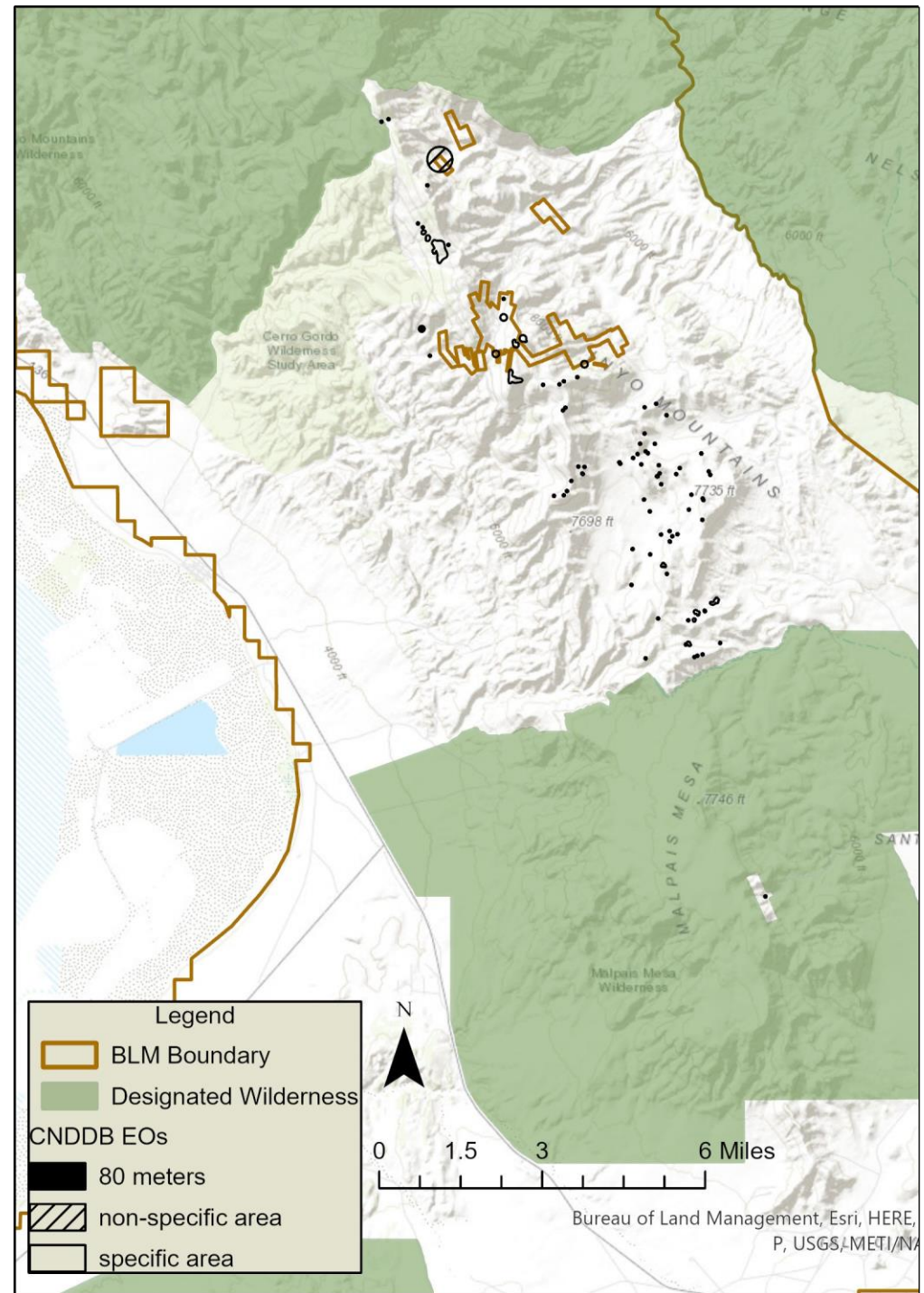
- Petition Background
- Petition Summary
- Threats



Photo by Maria Jesus

Petition Background

- Recent rock daisy research
- Extensive field surveys 2018 – 2020
- Threats rapidly increasing



Petition Summary

- Calcareous rock outcrops, cliffs
- Self-incompatible
- Limited dispersal
- Range ~20 square miles in southern Inyo Mountains



Narrow endemic

~96% Inyo rock daisy population



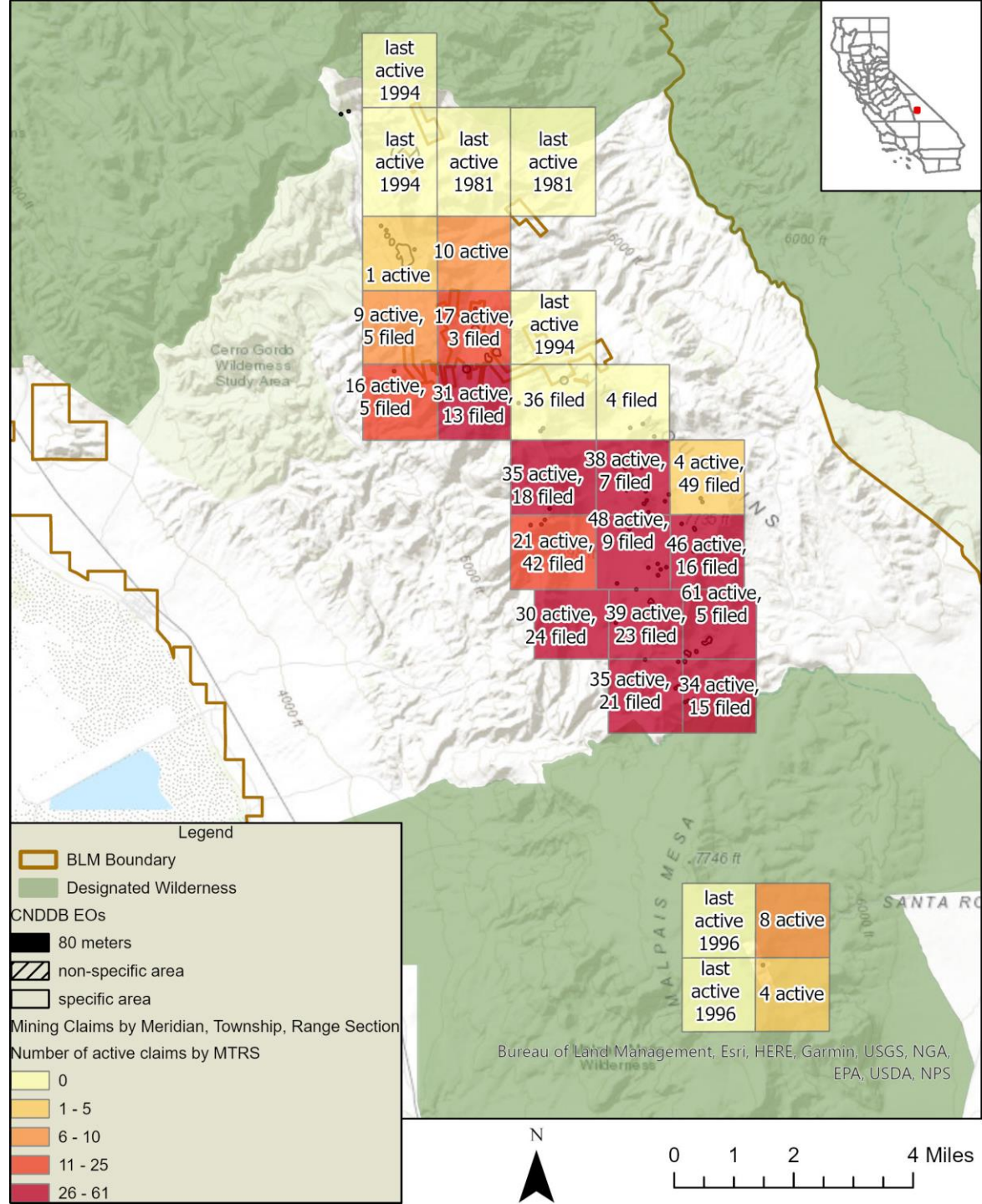
Threats: Drought

- Many plants in 2022 failed to produce shoots or flowers
- Global population subject to similar local conditions



Threats: Mining

- Most of population subject to mining claims
- Number of claims by Meridian, Township, Range, Section



Mining: Exploration

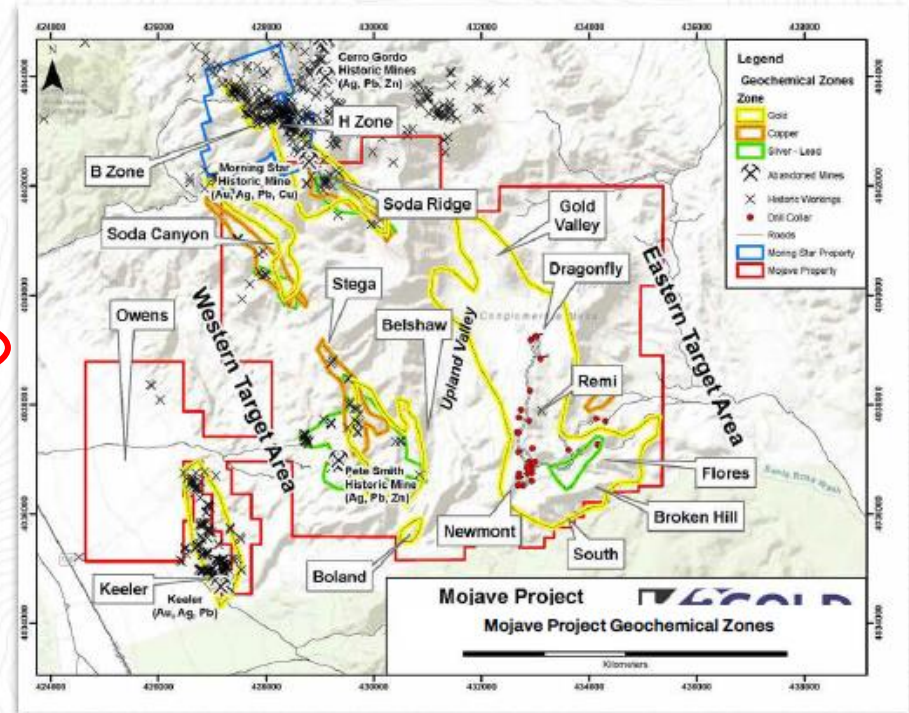
- K2 Gold (2018 to present)
- Phase I completed
- Environmental Impact Statement (EIS) announced at May 2022 Desert Advisory Council meeting



Mining: Industrial-scale

Mojave Project: Overview

- Near surface, oxide gold targets in 5 distinct areas
- Structurally Controlled:
 - Mineralization focused along lithologic contacts and high angle faults
- Sediment-Hosted Gold – low sulfidation epithermal system with some affinities to Carlin style deposits
- Oxide gold from surface in the first three holes of 2020 drill program





Gold Quarry Mine (Carlin Trend ore) in Eureka, NV.

Mining: Industrial-scale

- Significant portion (approx. 60-80%) of pop. in K2 boundary
- Threat compounded by self-incompatibility and limited dispersal

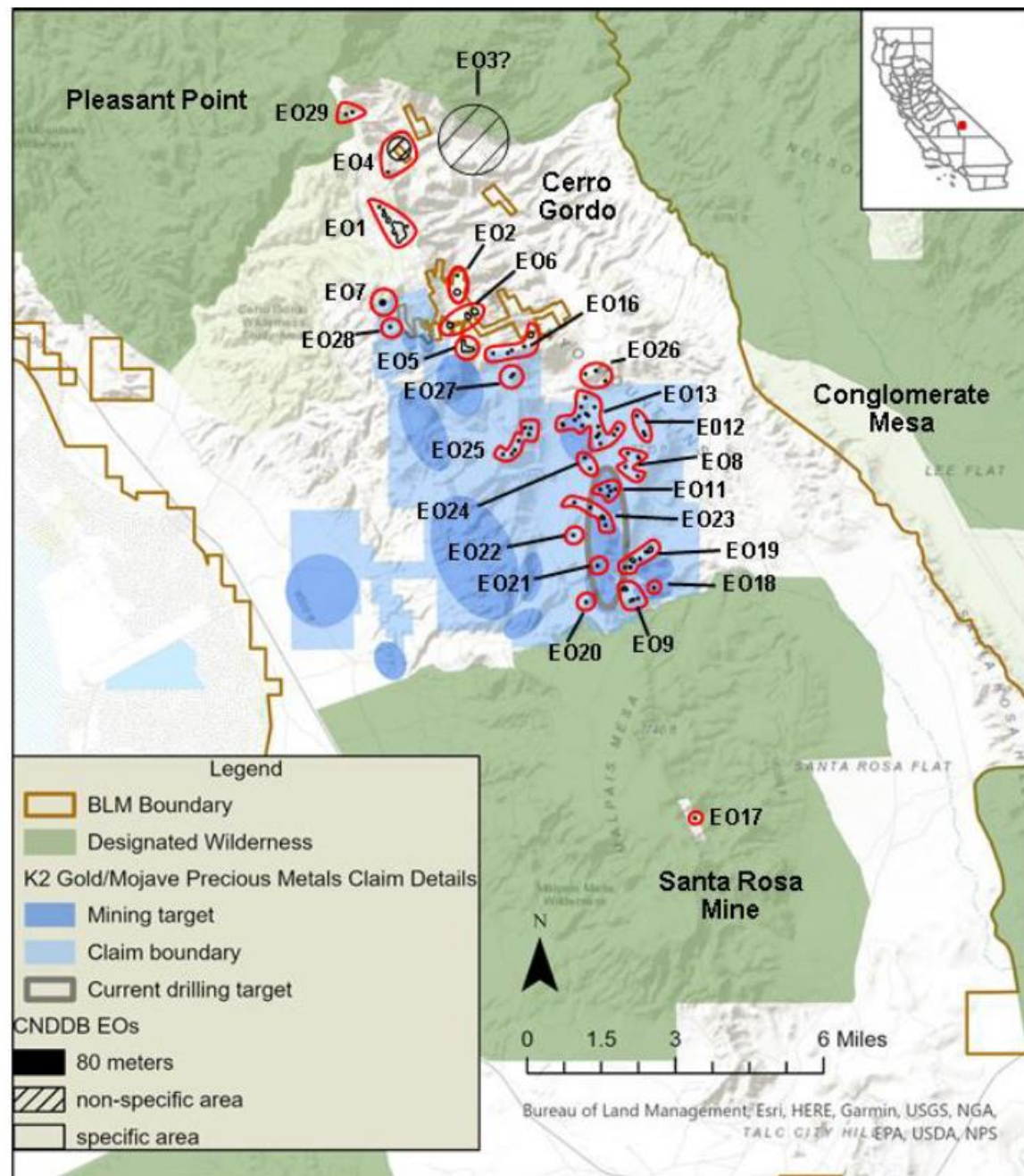


Fig. 8. Map of Inyo rock daisy range, all known occurrences (CNDDDB EOs), and K2 Gold/Mojave Precious Metals project area (K2 Gold 2021c; CDFW 2022). EOs often consist of multiple polygons (black) which are outlined here (red) for clarity.

Questions?



Budding Inyo rock daisy

Photo by Maria Jesus