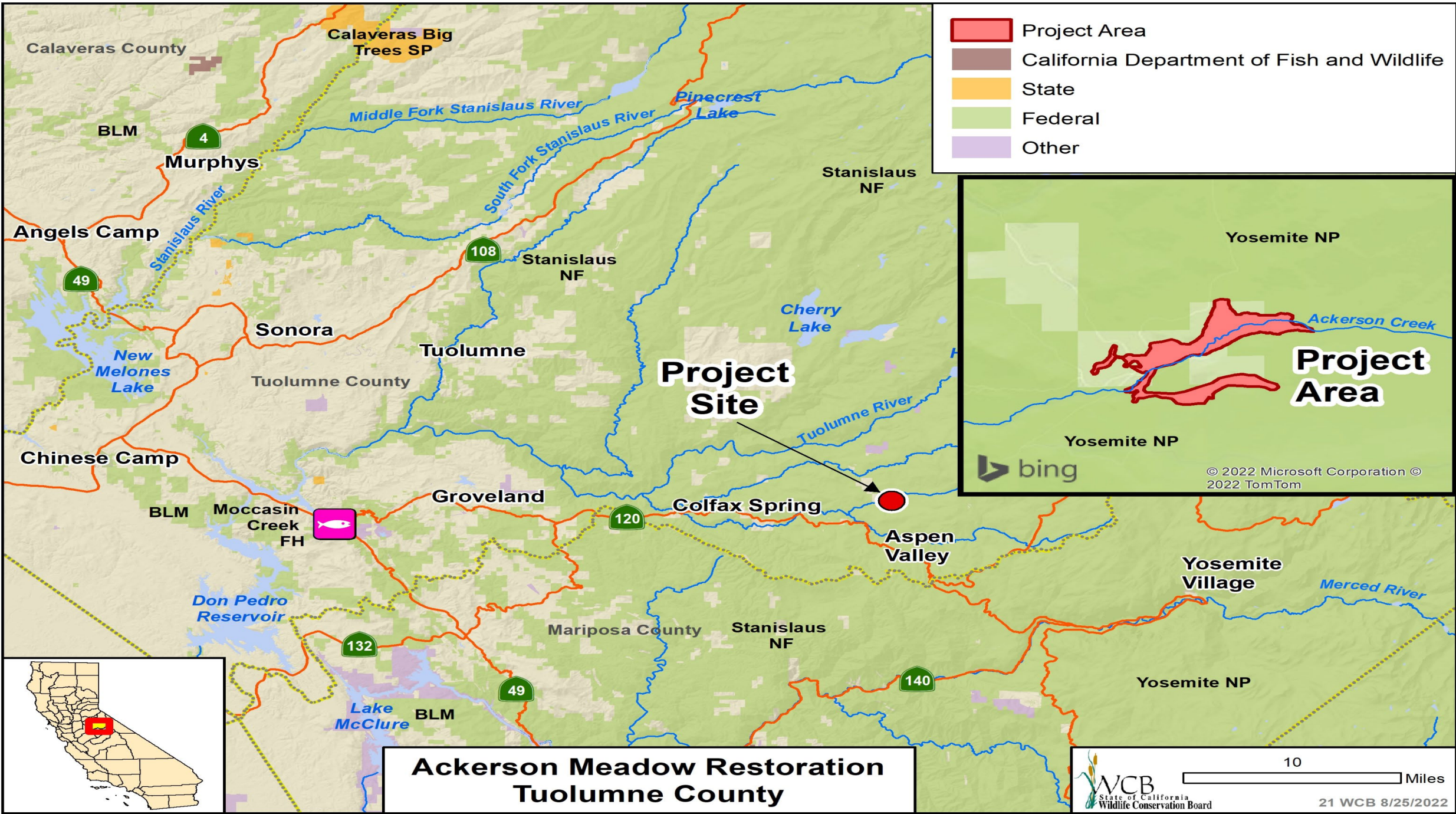


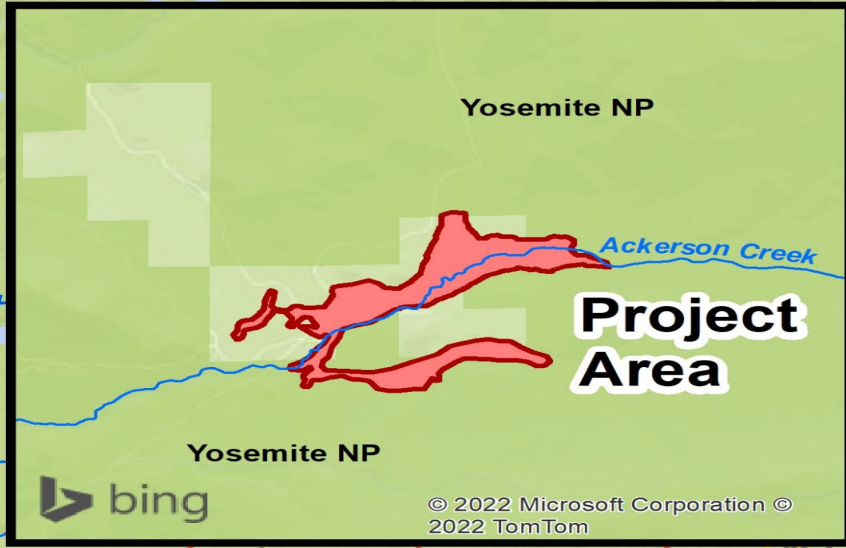


**Wildlife Conservation Board
September 30, 2022, 9:00 am Board Meeting
First Floor Auditorium, CNRA Headquarters Building**

Año Nuevo



- Project Area
- California Department of Fish and Wildlife
- State
- Federal
- Other



**Ackerson Meadow Restoration
Tuolumne County**



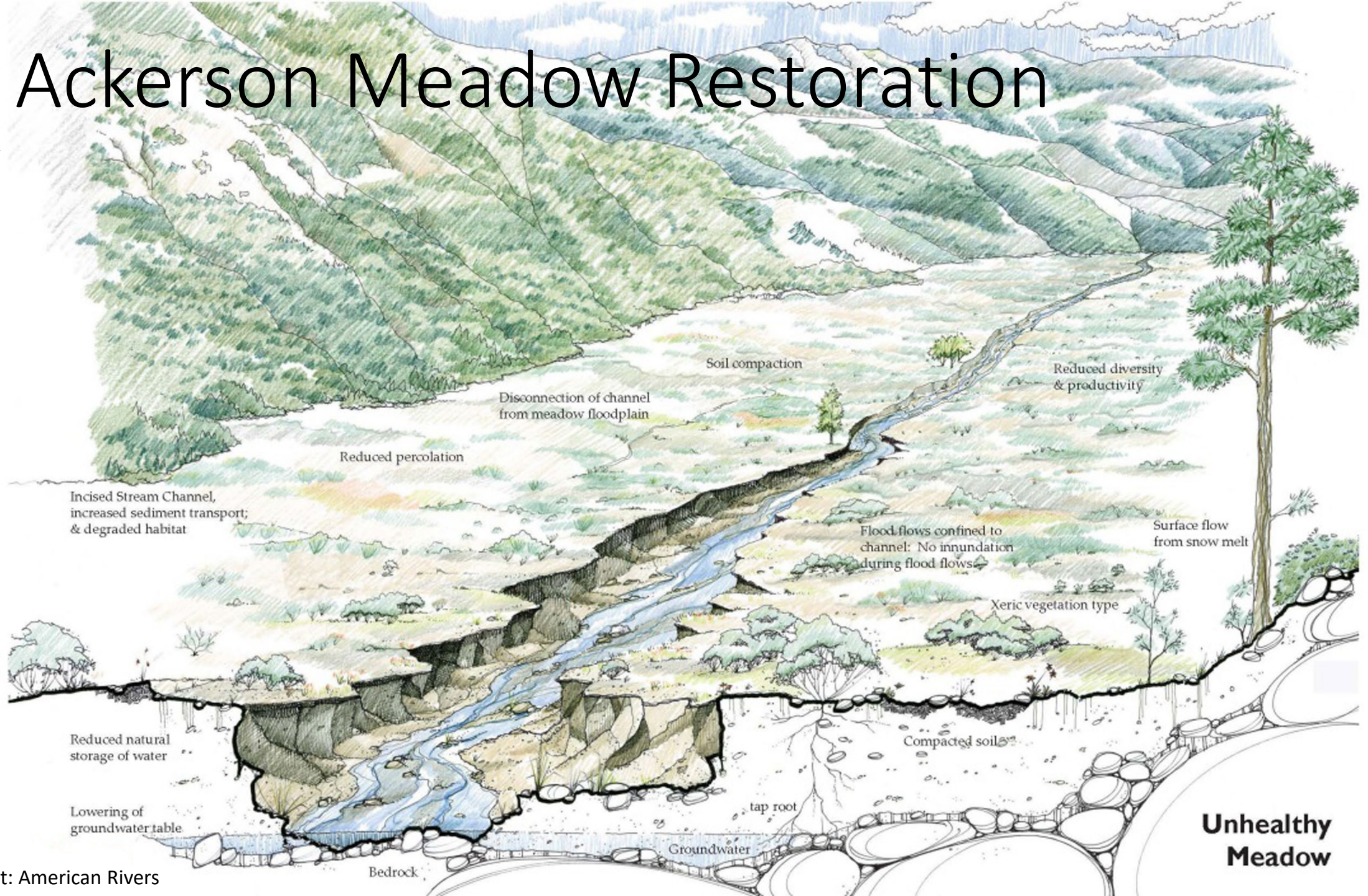
2. Ackerson Meadow Restoration

Slide 1

Ackerson Meadow viewed from the west (Evergreen Road).

2. Ackerson Meadow Restoration

Slide 2



2. Ackerson Meadow Restoration

Slide 3





2. Ackerson Meadow Restoration

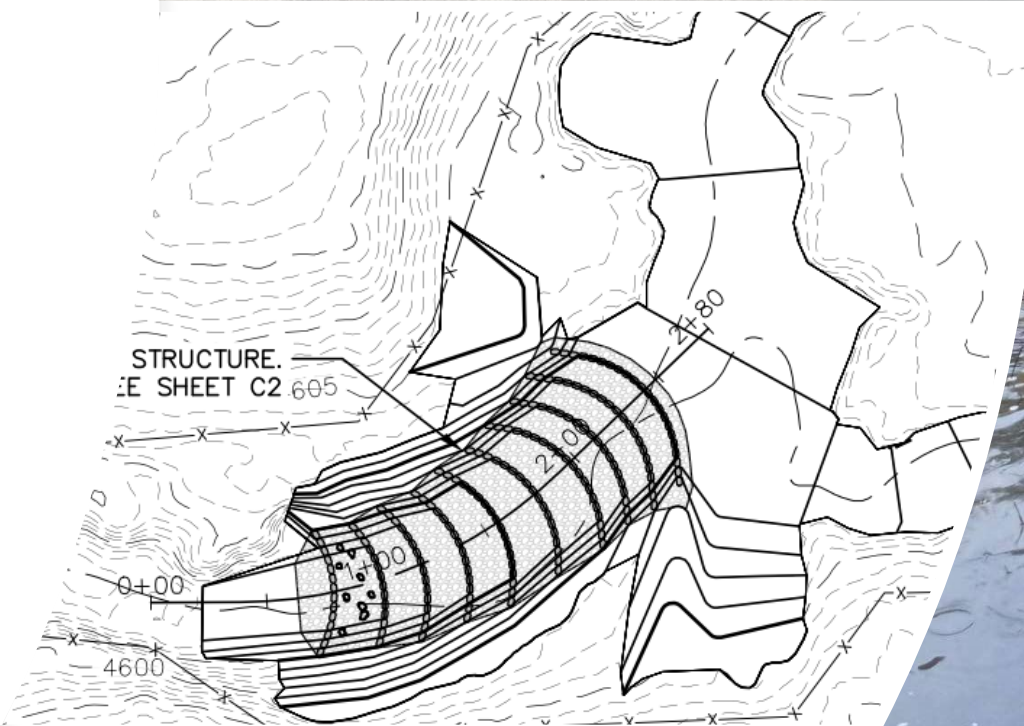
Slide 4

Channel cut bank near
confluence between
North and South
Ackerson.

2. Ackerson Meadow Restoration

Slide 5

Incised channel passing through Ackerson Meadow (top and right). Design drawing excerpt (bottom). Image credit: American Rivers

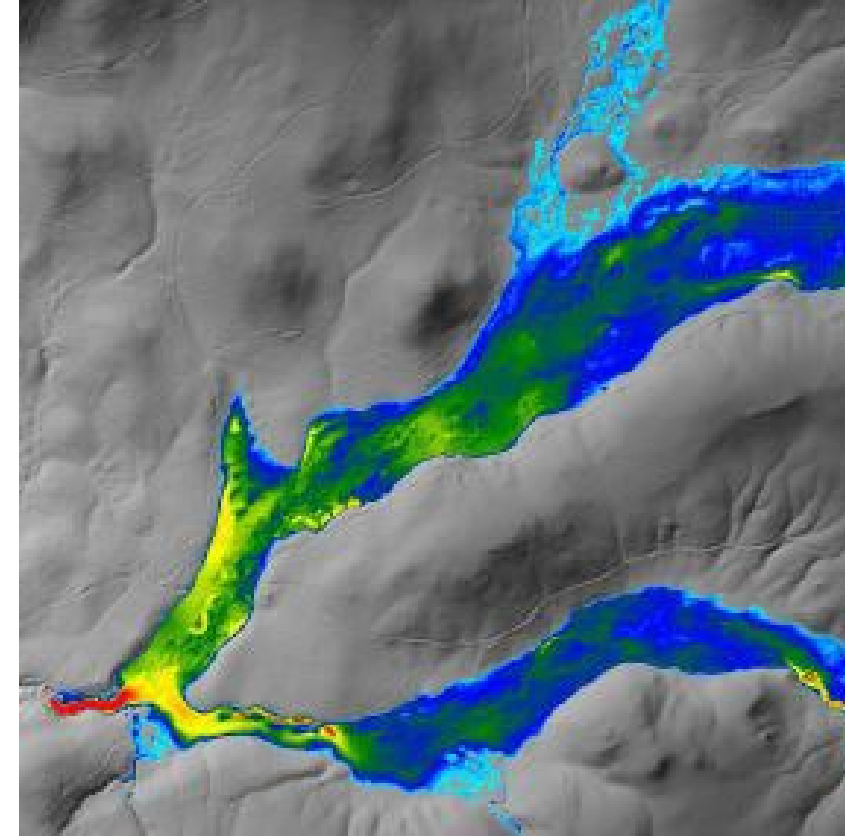
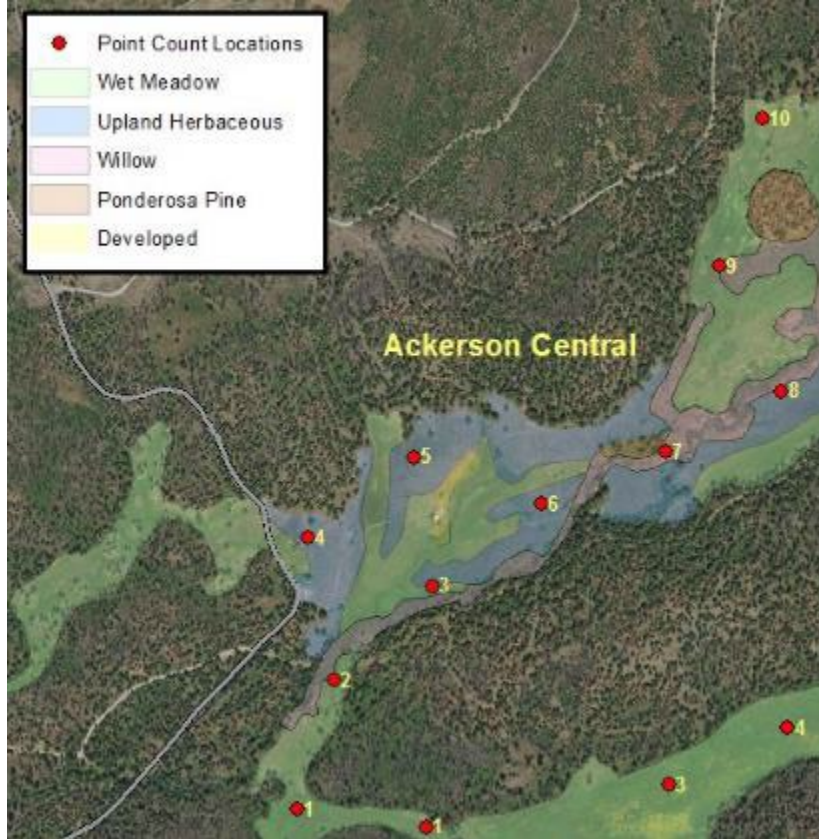
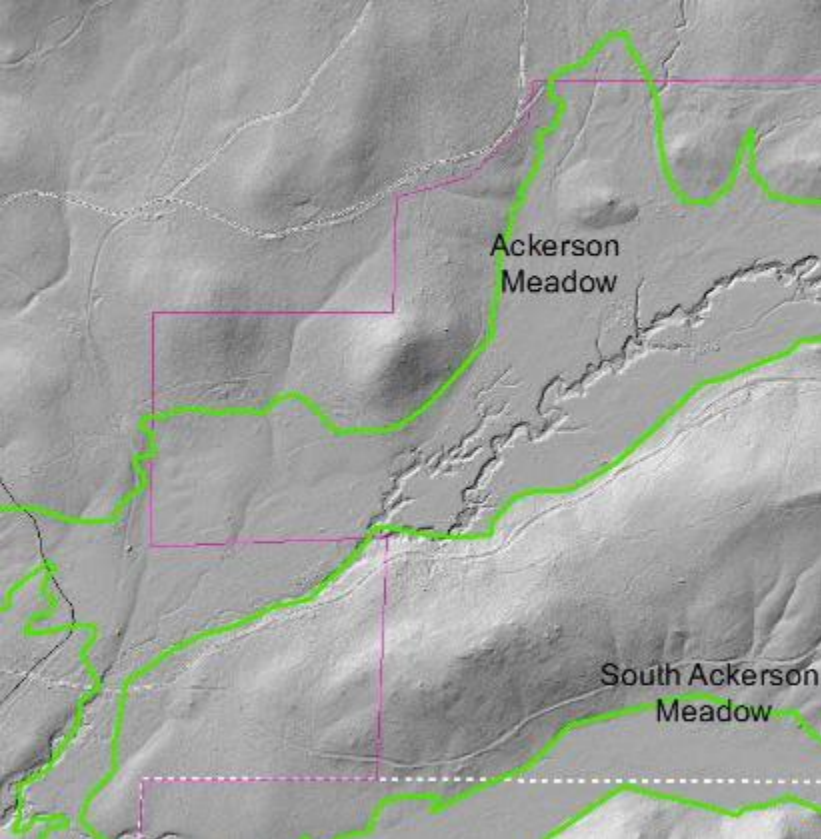




2. Ackerson Meadow Restoration

Slide 6

South Ackerson – example of target condition.



2. Ackerson Meadow Restoration

Slide 7

Ackerson Meadow Restoration Monitoring Plan excerpts. Image credit: American Rivers.



2. Ackerson Meadow Restoration

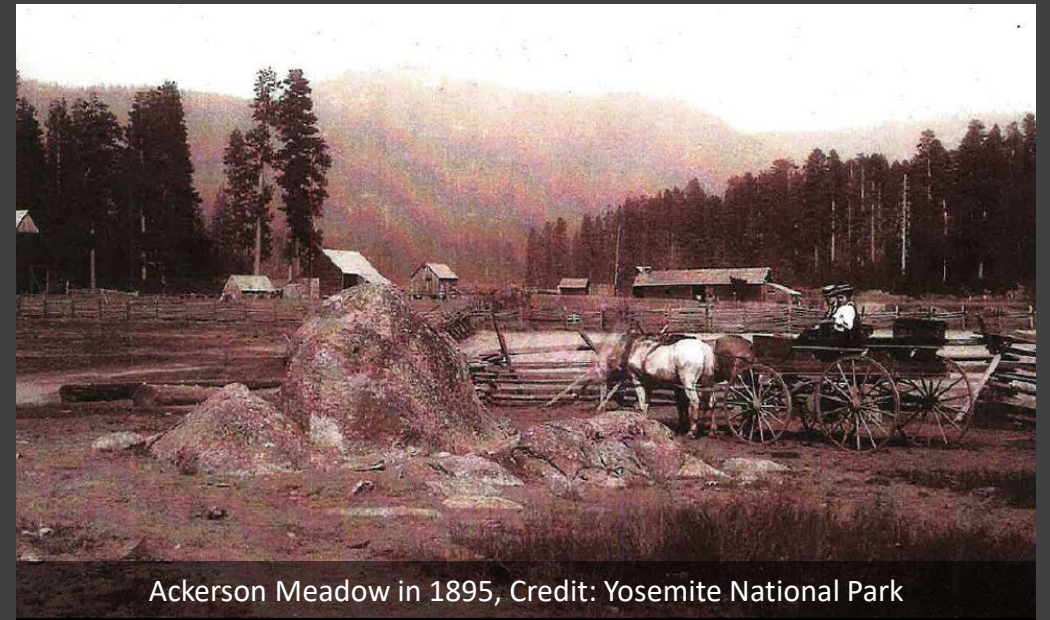
Slide 8

Ackerson Meadow.

2. Ackerson Meadow Restoration Project

Slide 9

- 160-year private land use history, 2016 acquisition by Yosemite NP
- Loss of 110 acres of wetland, massive incised gully system
- Retains immense biodiversity
- Project goal to restore geomorphic landforms, hydrologic processes, and vegetation to support wetland communities within historic extents



Ackerson Meadow in 1895, Credit: Yosemite National Park



South Ackerson Meadow in 2022; Credit: American Rivers

4.4.4.2 Removal of Exotic Species Already Present

All exotic plant and animal species that are not maintained to meet an identified park purpose will be managed—up to and including eradication—if (1) control is prudent and feasible, and (2) the exotic species

- ◆ interferes with natural processes and the perpetuation of natural features, native species or natural habitats, or
- ◆ disrupts the genetic integrity of native species, or
- ◆ disrupts the accurate presentation of a cultural landscape, or
- ◆ damages cultural resources, or
- ◆ significantly hampers the management of park or adjacent lands, or
- ◆ poses a public health hazard as advised by the U.S. Public Health Service (which includes the Centers for Disease Control and the NPS public health program), or
- ◆ creates a hazard to public safety.

Federal Register / Vol. 64, No. 25 / Monday, February 8, 1999 / Presidential Documents

Sec. 2. Federal Agency Duties. (a) Each Federal agency whose actions may affect the status of invasive species shall, to the extent practicable and permitted by law,

(1) identify such actions;

(2) subject to the availability of appropriations, and within Administration budgetary limits, use relevant programs and authorities to: (i) prevent the introduction of invasive species; (ii) detect and respond rapidly to and control populations of such species in a cost-effective and environmentally sound manner; (iii) monitor invasive species populations accurately and reliably; (iv) provide for restoration of native species and habitat conditions in ecosystems that have been invaded; (v) conduct research on invasive species and develop technologies to prevent introduction and provide for environmentally sound control of invasive species; and (vi) promote public education on invasive species and the means to address them; and

2. Ackerson Meadow Restoration Invasive Plant Management

Slide 10

- **Not funded by WCB or any state funds**
- Completed by YNP as part of ongoing conservation work as directed by NPS Management Policy 4.4.4.2 (2006) and Executive Order 13112
- Completed by Stanislaus NF per Forest Service Manual (2011) and Stanislaus NF Forest Plan (1991) goals and objectives
- **Would be completed with or without Ackerson Meadow Restoration Project**
- YNP Invasive Plant Management Plan (IPMP) 2010 NEPA → Finding of No Significant Impact
 - USFWS Consultation— May affect, but not likely to adversely affect
- Ackerson Meadow Restoration 2021 NEPA → Finding of No Significant Impact
 - USFWS Consultation—May affect, but not likely to adversely affect

2. Ackerson Meadow Restoration Invasive Plant Management

Slide 11

- Includes manual, mechanical, and chemical treatments based on efficacy for each species and environmental context
- Annual work plan reviewed by YNP biologists
- 13 known invasive plants species, 8 planned for treatment
 - 6 treated with combination of manual, mechanical, and chemical
 - 2 perennial species are treated with herbicides only due to ineffectiveness of manual methods
- Non-chemical only treatments are practically infeasible.

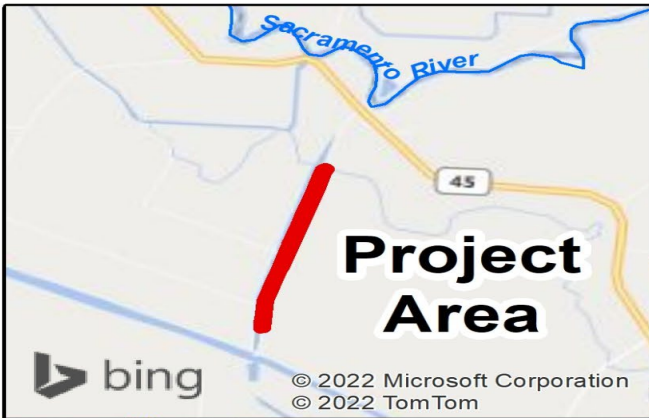


Medusahead grass; Image Credit: 2001 Julie Kierstead
Nelson

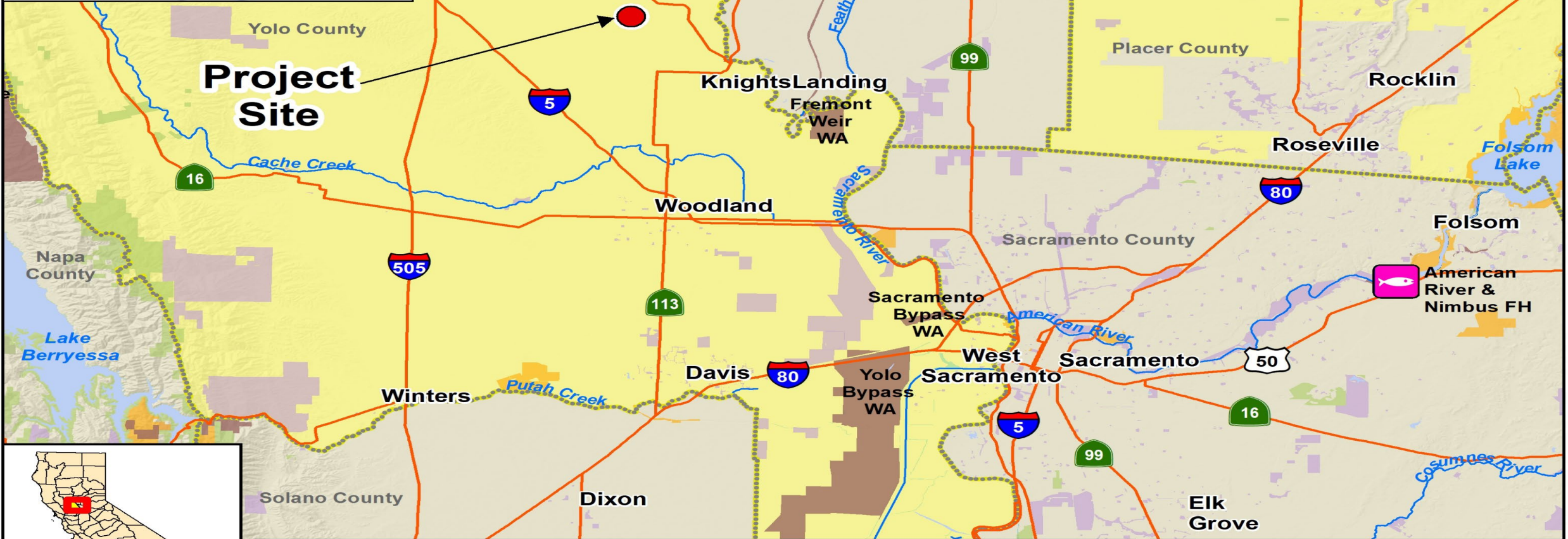


2. Ackerson Meadow Restoration Project Slide 12

- Photo Credit: Yosemite National Park

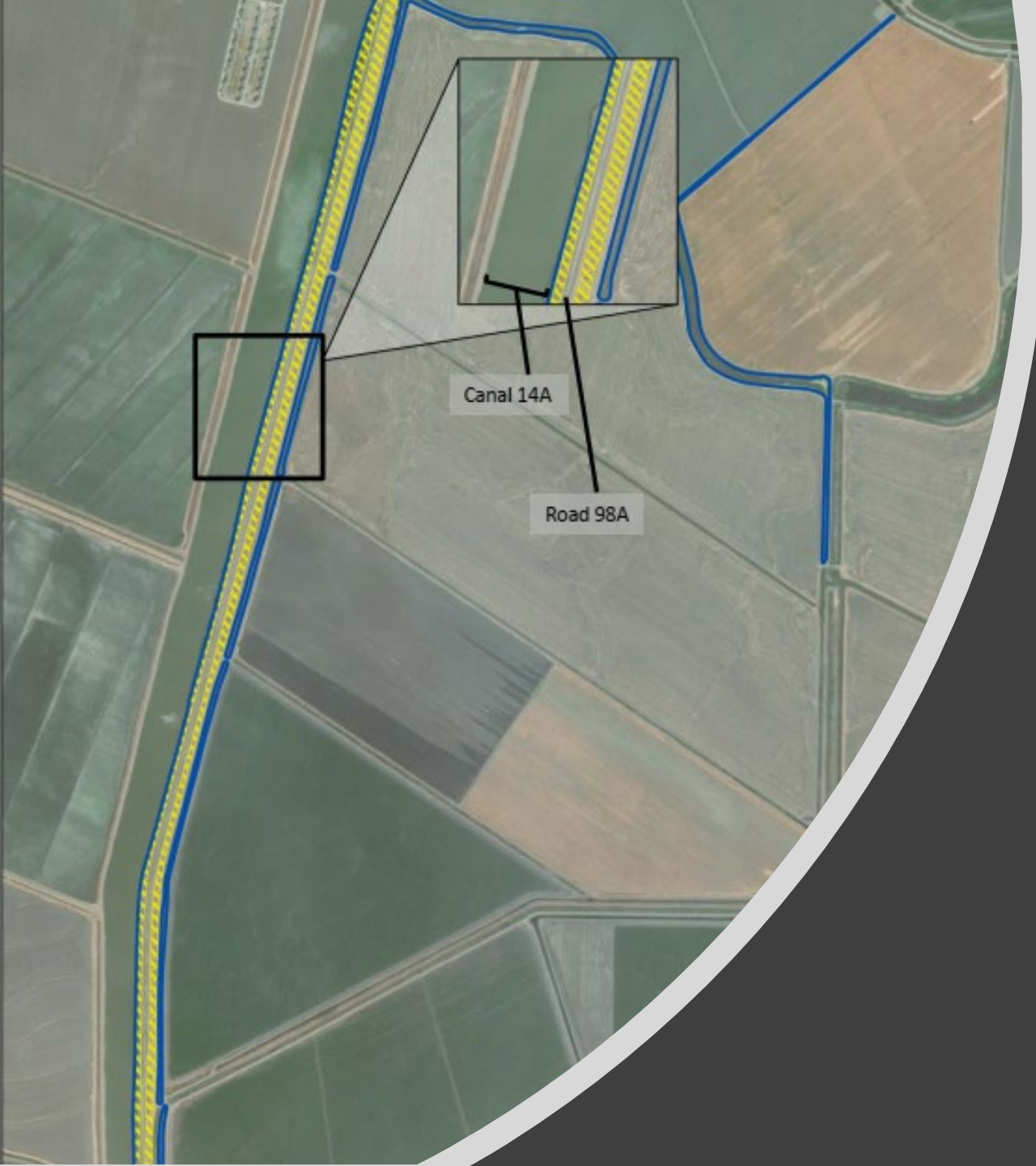


- Project Area
- HCP/NCCP
- California Department of Fish and Wildlife
- State
- Federal
- Other



**Climate Smart Restoration at River Garden Farms
Yolo County**

10 Miles
 20 WCB 8/25/2022



3. Climate Smart Restoration at River Garden Farms

Slide 1

Aerial view of project area.
Project site highlighted in yellow.



20. Climate Smart Restoration at River Garden Farms
Slide 2 : Hedgerow example

3. Climate Smart Restoration at River Garden Farms

Slide 3



Sustainable Stewardship.
Farming for the 21st century.

River Garden Farms covers 15,000 acres of some of the most fertile ground on the planet.

Photos: River Garden Farms and Yolo Audubon



A landscape photograph showing a canal on the left, a road on the right, and a white pickup truck parked on the road. The foreground is dominated by tall, dry, golden-brown grasses. In the background, there are some trees and a clear blue sky.

3. Climate Smart Restoration at River Garden Farms

Slide 4

- Canal side of project area, facing west

A wide gravel road leads from the foreground towards a large, flat field. The field is divided into sections of green crops and areas of dry, yellowish-brown grasses and shrubs. The sky is blue with scattered white clouds. In the distance, a line of trees is visible.

3. Climate Smart Restoration at River Garden Farms

Slide 5

- Project site between Road 98A and River Garden Farms, facing east.



3. Climate Smart Restoration at River Garden Farms

Slide 6

- Hedgerow vegetation along east side of project site.



3. Climate Smart Restoration at River Garden Farms Slide 7

- **Community participation**

Photo Credit: Saxon Holt



3. Climate Smart Restoration at River Garden Farms

Slide 8

Education/Volunteer Opportunities:

Student and Landowner Education and Watershed
Stewardship (SLEWS) program.

Photo Credit: Audubon California

3. Climate Smart Restoration at River Garden Farms

Slide 9

- Previous hedgerow plantings, to be augmented through the project.
- Photo Credit: Saxon Holt



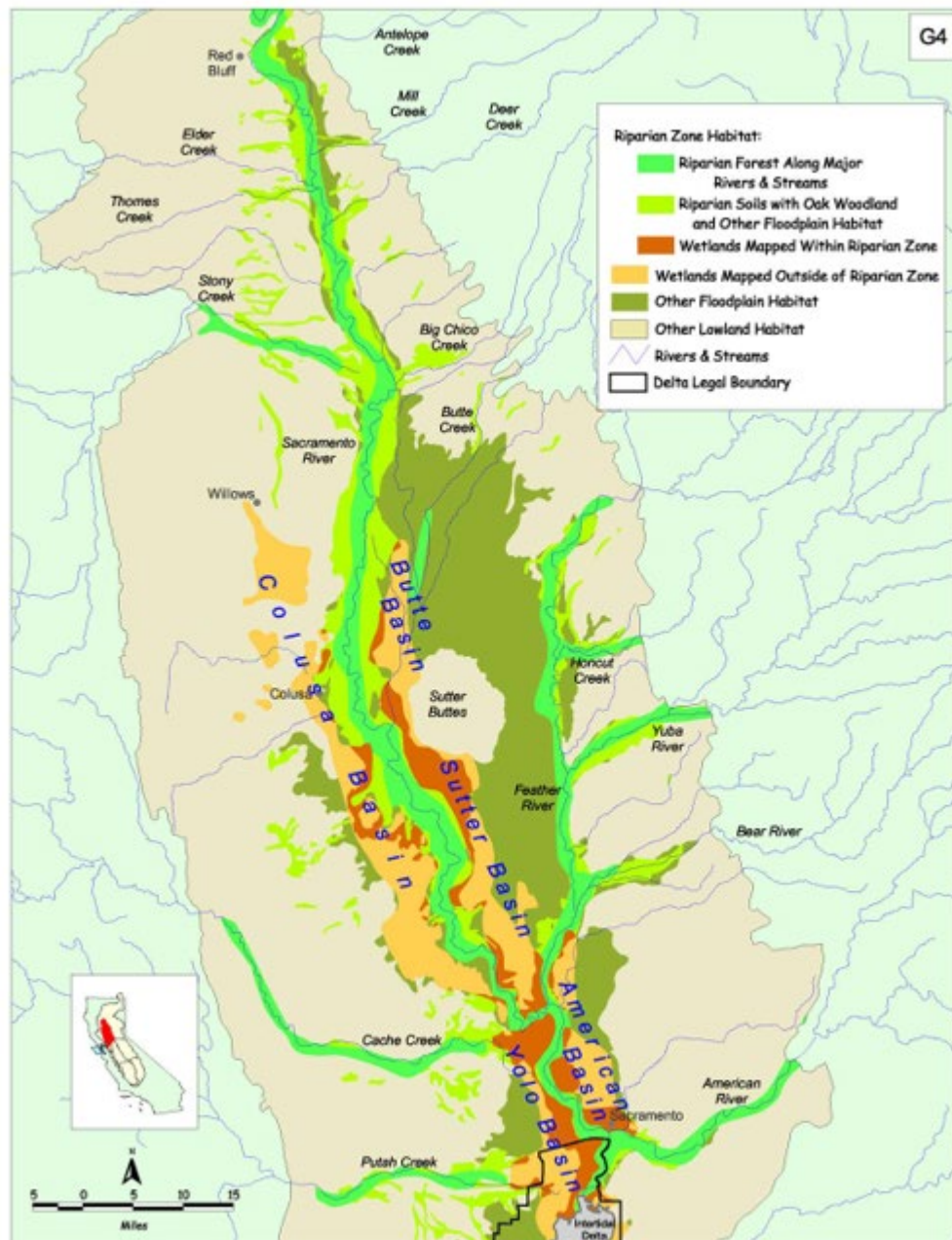


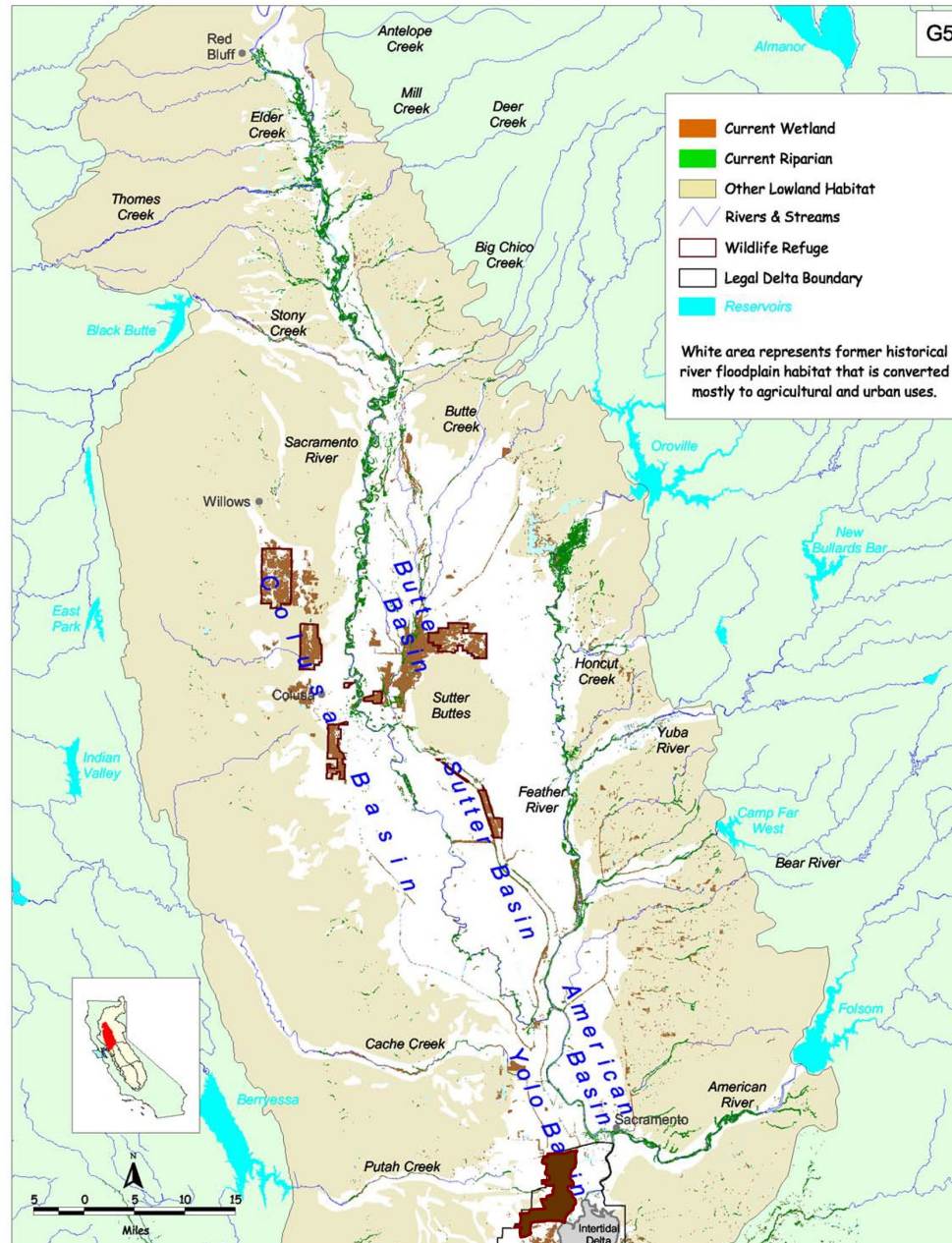
SPECIAL REPORT

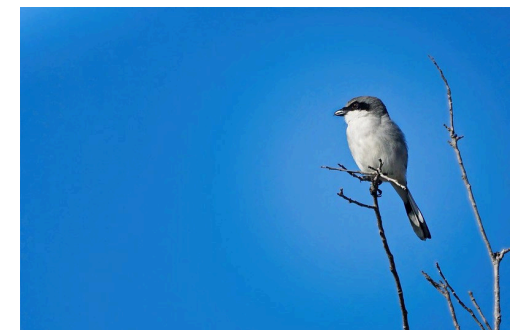
BIRDS CAN'T FIGHT CLIMATE CHANGE. WE CAN.

389 bird species are at risk of extinction in a warming world. Many can still be protected—if we act now.











Restoration Actions

- 1. Establish diverse native plant community for birds and other wildlife**
- 2. Control invasive plant species**
- 3. Conduct ecological monitoring**
- 4. Complete maintenance and adaptive management**

Restoration Actions Cont.

Integrated Pest Management

- Evaluation of site
- Monitoring and assessment of pest numbers and damage
- Pest prevention
- Manual, mechanical, chemical management
- Monitoring and adaptive management





4. Scoping Discussion for Herbicide Use in Restoration Projects

Does the Board need more information to better understand herbicide use in a restoration setting?

Would an overview document on the use of herbicide in restoration be useful (e.g. FAQ)?

Are changes needed to the existing herbicide questionnaire?



Stay Safe and Healthy, Enjoy the Rest of Your Day!

Next Board meeting – Tuesday, November 15, 2022, 10:00 am – CNRA HQ