

STAFF SUMMARY FOR DECEMBER 14-15, 2022

17. ELK HUNTING**Today's Item****Information** ☐**Action** ☒

Consider authorizing publication of notice of intent to amend elk hunting regulations.

Summary of Previous/Future Actions

- | | |
|---------------------------------|--|
| • WRC vetting | Sep 15, 2022; WRC, Arcadia |
| • Today's notice hearing | Dec 14-15, 2022; San Diego |
| • Discussion hearing | Feb 8-9, 2023; Sacramento |
| • Adoption hearing | Apr 19-20, 2023; Fresno/Bakersfield area |

Background

Current regulations in Section 364 provide definitions, hunting zone descriptions, season opening and closing dates, methods of take (e.g., general methods, archery only, muzzleloader only), tag designations (e.g., bull, spike bull, antlerless, and either-sex), tag quotas (total number of hunting tags to be made available), and bag and possession limits for elk hunting. Section 364.1 provides season opening and closing dates, methods of take, tag designations, tag quotas, and bag and possession limits for elk hunting administered through the Shared Habitat Alliance for Recreational Enhancement (SHARE) hunt program. Individuals are awarded an elk hunting tag through DFW's big game drawing or SHARE Program drawing.

Harvest of an elk is authorized for an individual awarded a tag for a respective hunt zone or SHARE property and season. Tag quotas are established based on a variety of factors including population density and abundance, age and sex composition, elk distribution, and human-elk conflict levels, among other population objectives, factors, and considerations. DFW has identified areas where increased public elk hunting opportunities are feasible and support population objectives; it recommends regulation changes as described in the draft initial statement of reasons (ISOR; Exhibit 2) and proposed regulatory text (Exhibit 3).

Tejon Rocky Mountain Elk Management Unit

- *Current (2022) regulations:* No hunt zone established which authorizes public elk harvest in the Tejon Rocky Mountain Elk Management Unit.
- *Proposed changes:* Create a Tehachapi Rocky Mountain Elk Hunt Zone and General Methods Hunt, with tag allowances set at 5 bull and 10 antlerless.

Bear Valley and Cache Creek Tule Elk Hunt Zones

- *Current regulations:* Public tag quota for these zones are 1 antlerless tag and 2 bull tags (Bear Valley), and 1 apprentice bull tag, 2 antlerless tags, and 2 bull tags (Cache Creek).
- *Proposed changes:* Modify adjacent hunt zone boundaries to bound demographically and genetically interacting populations.

STAFF SUMMARY FOR DECEMBER 14-15, 2022

Siskiyou Roosevelt Elk Hunt Zone

- *Current regulations:* Public tag quota is 20 antlerless tags and 20 bull tags. The bull and antlerless hunt periods are concurrent.
- *Proposed changes:* Set public tag quota to 20 bull tags and 30 antlerless tags and shift the bull season from September to October.

Northwestern Roosevelt Elk Hunt Zone

- *Current regulations:* Public tag quota is 15 antlerless tags, 3 bull tags, and 3 either-sex tags.
- *Proposed changes:* Set public tag quota to 25 bull tags, 15 antlerless tags, and 3 either-sex tags.

La Panza Tule Elk Hunt Zone and Central Coast Tule Elk Management Unit

- *Current regulations:* Public tag quotas for the La Panza Hunt Zone is 1 apprentice antlerless tag, 11 antlerless tags across two hunt periods (5 and 6 tags, respectively), and 12 bull tags across two hunt periods (6 and 6, respectively). There is currently no authorized public elk harvest in the Central Coast Tule Elk Management Unit.
- *Proposed changes:* Decrease the size of the La Panza Hunt Zone, create a new Gabilan Tule Elk Hunt Zone, and create a new Central Coast Tule Elk Zone, which incorporates the existing Camp Roberts Tule Elk Management Unit. For each of the new hunt zones, create a general methods hunt, with tag allowances set at 6 bull and 5 antlerless (La Panza Period 1), 6 bull and 5 antlerless (La Panza Period 2), 10 bull and 10 antlerless (Central Coast), and 4 bull and 6 antlerless (Gabilan).

Additional Non-Substantive Proposed Changes

The proposal also makes several non-substantive changes to provide consistency among Title 14 sections, such as corrections to spelling, grammar, and reference terminology.

Significant Public Comments

A commenter requests that the notice hearing for this rulemaking be postponed to the Feb 2023 meeting because DFW materials were not available prior to the public comment deadline (Exhibit 6).

Recommendation

FGC staff: Authorize publication of a notice of intent to amend regulations related to elk hunting, as recommended by DFW and supported by WRC.

WRC: Support the proposed regulation changes related to elk hunting.

DFW: Authorize publication of a notice of intent to amend regulations as detailed in the draft ISOR.

Exhibits

1. [DFW memo, received Nov 21, 2022](#)
2. [Draft ISOR](#)

STAFF SUMMARY FOR DECEMBER 14-15, 2022

3. [Proposed regulatory text](#)
4. [Draft economic and fiscal impact statement \(STD. 399\)](#)
5. [DFW presentation](#)
6. [Email from Phoebe Lenhart, received Dec 1, 2022.](#)

Motion

Moved by _____ and seconded by _____ that the Commission authorizes publication of a notice of its intent to amend sections 364 and 364.1 related to elk hunting.

Memorandum

Date: November 16, 2022

To: Melissa Miller-Henson
Executive Director
Fish and Game Commission

From: Charlton H. Bonham
Director

Subject: **December meeting agenda item: Submission of Initial Statement of Reasons to Amend Title 14, California Code of Regulations (CCR), Section 364 and 364.1 Elk Hunts, Seasons, and Number of Tags and Department Administered Shared Habitat Alliance for Recreational Enhancement (SHARE) Elk Hunts**

The Department of Fish and Wildlife (Department) requests that the Fish and Game Commission (Commission) authorize publishing notice of its intent to amend Sections 364 and 364.1, Title 14, CCR. Tag quotas are established based on a variety of factors including population density and abundance, age and sex composition, elk distribution, and human-elk conflict levels, among other population objectives, factors, and considerations. Based on elk population data, the Department is proposing changes to elk hunt zone boundaries, seasons, and tag allocations for areas where increased public elk hunting opportunities support achievement of population objectives:

- Tejon Rocky Mountain Elk Management Unit;
- Bear Valley and Cache Creek Tule Elk Hunt Zones;
- Siskiyou Roosevelt Elk Hunt Zone;
- Northwestern Roosevelt Elk Hunt Zone; and
- La Panza Tule Elk Hunt Zone and Central Coast Tule Elk Management Unit.

If you have any questions regarding these items, please contact Scott Gardner, Wildlife Branch Chief, at (916) 801-6257. The public notices for these rulemakings should identify Environmental Scientist Tom Batter as the Department's point of contact. He can be reached at (916) 801-0649.

ec: Chad Dibble, Deputy Director
Wildlife and Fisheries Division

Scott Gardner, Branch Chief
Wildlife Branch
Wildlife and Fisheries Division

Tom Batter, Elk and Pronghorn Coordinator
Wildlife Branch

Melissa Miller-Henson, Executive Director
Fish and Game Commission
November 16, 2022
Page 2

Wildlife and Fisheries Division

Chris Stoots, Assistant Chief
Law Enforcement Division

Ona Alminas, Manager
Regulations Unit
Wildlife and Fisheries Division

Chelle Temple-King, Senior Regulatory Analyst
Regulations Unit
Wildlife and Fisheries Division

Ari Cornman, Wildlife Advisor
Fish and Game Commission

David Haug, Analyst
Fish and Game Commission

David Thesell, Manager
FGC Regulations Unit

State of California
Fish and Game Commission
Initial Statement of Reasons for Regulatory Action

Amend Sections 364 and 364.1
Title 14, California Code of Regulations
Re: Elk Hunting

I. Date of Initial Statement of Reasons:

II. Dates and Locations of Scheduled Hearings

(a) Notice Hearing

Date: December 15, 2022

Location: San Diego

(b) Discussion Hearing

Date: February 8, 2023

Location: Sacramento

(c) Adoption Hearing

Date: April 19, 2023

Location: Fresno/Bakersfield

III. Description of Regulatory Action

(a) Statement of Specific Purpose of Regulatory Change and Factual Basis for Determining that Regulation Change is Reasonably Necessary.

Unless otherwise specified, all section references in this document are to Title 14 of the California Code of Regulations.

Background

The California Department of Fish and Wildlife (Department) has identified regulated hunting as a preferred tool to both manage elk populations and provide public recreation opportunities. The Fish and Game Commission (Commission) periodically considers the recommendations of the Department in establishing elk hunting regulations. Considerations include recommendations for adjusting tag quotas, setting hunt periods, modifying zone boundaries, and authorizing methods of take, among others, to help achieve management goals and objectives.

To maintain appropriate harvest levels, it is necessary to periodically adjust elk hunting regulations, including tag quotas and hunt zone boundaries, in response to dynamic environmental, biological, and social conditions. Current regulations in Section 364 specify elk tag quotas for each hunt zone and establish hunt zone boundaries in accordance with management goals and objectives described in the Department's Elk Conservation and Management Plan. Similarly, current regulations in Section 364.1 specify elk tag quotas for each hunt zone that may be distributed to the public to allow access to hunt elk on specific properties that enter into the Shared Habitat Alliance for Recreational Enhancement (SHARE) program. A limited number of public elk hunting tags are offered annually via the

Big Game Drawing and SHARE program drawing, and public demand for elk hunting tags (as indicated by elk tag draw applications) has annually exceeded tag availability for the last ten years. In addition to harvest opportunity, public elk hunting also provides data that enhances the Department's ability to monitor elk populations including spatial, age, genetic, and disease information. As described in the Department's Elk Conservation and Management Plan (2018), the Department's goal is to increase elk hunting opportunities where feasible and compatible with population objectives, in which case recommendations will be offered to the Commission.

Current Regulations

Section 364 provides definitions, hunting zone descriptions, season opening and closing dates, methods of take (e.g., general methods, archery only, muzzleloader only), tag designations (e.g., bull, spike bull, antlerless, and either-sex), tag quotas (total number of hunting tags to be made available), and bag and possession limits for elk hunting. Section 364.1 provides season opening and closing dates, methods of take, tag designations, tag quotas, and bag and possession limits for elk hunting administered through the SHARE hunt program. Individuals are awarded an elk hunting tag through the Department's Big Game Drawing or SHARE hunt program drawing.

Harvest of an elk is authorized for an individual awarded a tag for a respective hunt zone or SHARE property and season. Tag quotas are established based on a variety of factors including population density and abundance, age and sex composition, elk distribution, and human-elk conflict levels, among other population objectives, factors, and considerations. The Department has identified the following areas where increased public elk hunting opportunities are feasible and support achievement of population objectives:

- Tejon Rocky Mountain Elk Management Unit. Currently there is no hunt zone established which authorizes public elk harvest in the Tejon Rocky Mountain Elk Management Unit.
- Bear Valley and Cache Creek Tule Elk Hunt Zones. Current (2022) public tag quota for these zones are 1 antlerless tag and 2 bull tags (Bear Valley), and 1 apprentice bull tag, 2 antlerless tags, and 2 bull tags (Cache Creek).
- Siskiyou Roosevelt Elk Hunt Zone. Current (2022) public tag quota for the Siskiyou Hunt Zone is 20 antlerless tags and 20 bull tags. The bull and antlerless hunt periods are concurrent.
- Northwestern Roosevelt Elk Hunt Zone. Current (2022) public tag quota for the Northwestern Hunt Zone is 15 antlerless tags, 3 bull tags, and 3 either-sex tags.
- La Panza Tule Elk Hunt Zone and Central Coast Tule Elk Management Unit. Current (2022) public tag quotas for the La Panza Hunt Zone is 1 apprentice antlerless tag, 11 antlerless tags across two hunt periods (5 and 6 tags, respectively), and 12 bull tags across two hunt periods (6 and 6, respectively). There is currently no authorized public elk harvest in the Central Coast Tule Elk Management Unit.

Figure 1 below outlines the affected elk management units and proposed hunt zones.

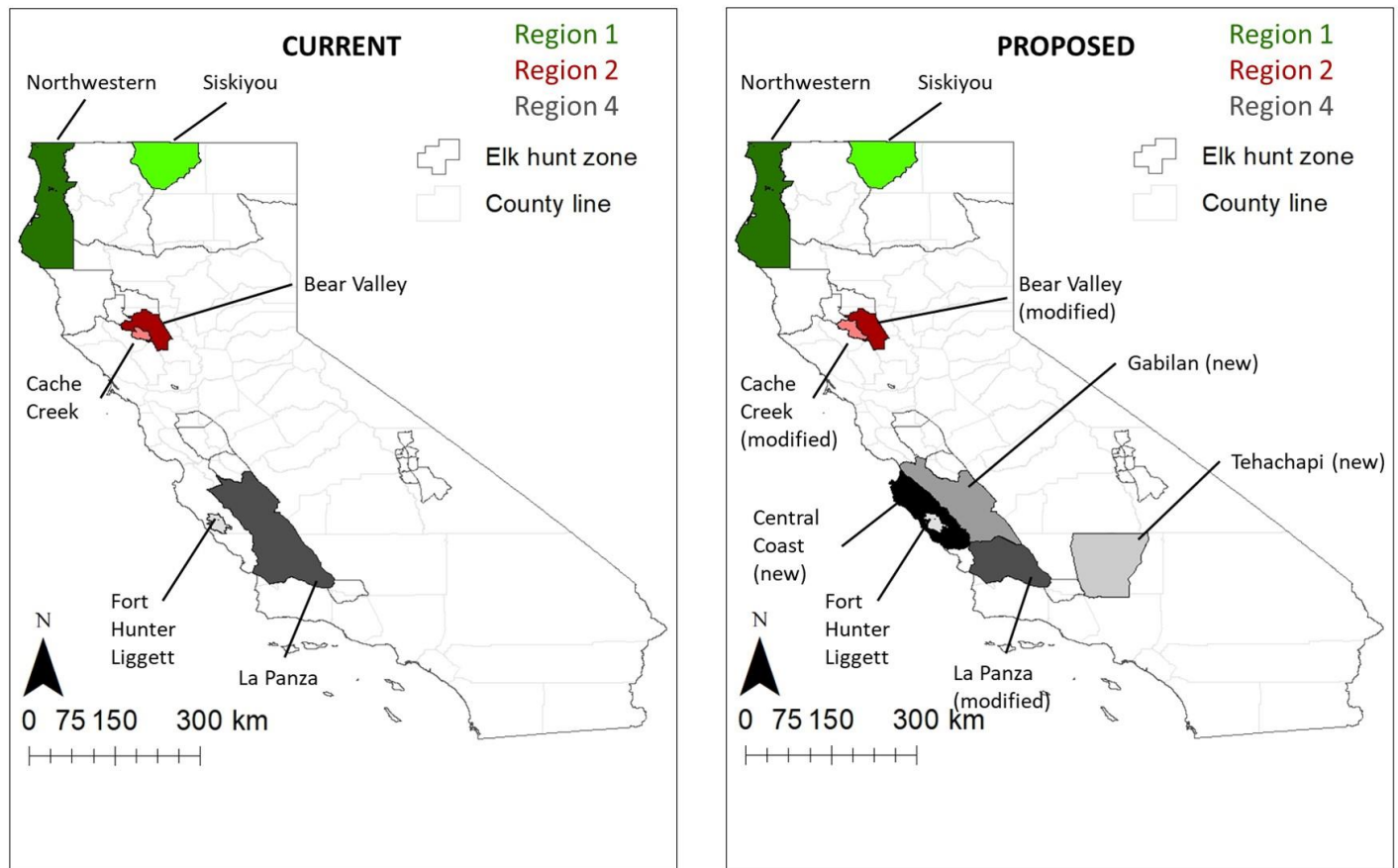


Figure 1. Elk management units affected by proposed regulation. Map on left outlines current hunt zones, and the map on the right shows the proposed revisions to existing hunt zone boundaries and new hunt zones.

Proposed Regulations

The regulatory changes the Department is proposing are described below by subsection.

The proposed changes to Section 364 and Section 364.1 include the following:

Tejon Rocky Mountain Elk Management Unit

- Add subsection 364(b)(2)(A) to establish the Tehachapi Rocky Mountain Elk Hunt.
- Add subsection 364.1(j)(2)(1), 364.1(j)(2)(2), and 364.1(j)(2)(B) to authorize bull harvest, antlerless harvest, and hunt area for the Tehachapi General Methods SHARE Rocky Mountain Elk hunt.

Tejon Rocky Mountain Elk Management Unit: currently there is no hunt zone established which authorizes public elk harvest within the Tejon Rocky Mountain Elk Management Unit. Regulated elk harvest occurs on the Tejon Ranch operated under the Private Lands Management program. Non-native Rocky Mountain elk were imported to the Rex C. Ellsworth Ranch in 1967, in what is now the community of Stallion Springs. The importation was permitted as part of a fenced game farming operation. Elk escaped the enclosure and persisted on adjacent properties, particularly Tejon Ranch. Elk populations have since increased in abundance and expanded beyond the Tejon Ranch into surrounding communities in Kern County and the Southern Sierras. Human-

elk conflict has exceeded tolerable levels in some areas. Current abundance levels are above objectives outlined in the 2018 Elk Conservation and Management Plan. Observed bull:cow ratios (47mm:100ff) are also above the Elk Conservation and Management Plan objective (25mm:100ff). Continued range expansion may result in non-native Rocky Mountain elk overlapping with endemic tule elk in the Owens Valley, resulting in hybridization between the two subspecies. This presents a threat to genetic integrity of the endemic tule elk population, and it is desirable to prevent hybridization between these subspecies from occurring as described in the Elk Conservation and Management Plan.

To help address these concerns for the Tejon Elk Management Unit, the Department recommends establishing a Tehachapi Rocky Mountain Elk Hunt Zone and General Methods Hunt to help achieve goals and objectives outlined in the 2018 Elk Conservation and Management Plan.

Bear Valley and Cache Creek Tule Elk Hunt Zones

- Amend subsections 364(d)(1)(A) and 364(d)(17)(A) to modify the boundaries of the Cache Creek General Methods Tule Elk Hunt and the adjacent Bear Valley General Methods Tule Elk Hunt.

Bear Valley and Cache Creek Tule Elk Hunt Zones: current (2022) public tag quota for these zones is one antlerless tag and two bull tags (Bear Valley) and one apprentice bull tag, two antlerless tags, and two bull tags (Cache Creek). Current Hunt Zone boundaries are outdated relative to observed population dynamics including spatial and genetic data; additionally, a problematic and potentially exploitative protrusion of the Bear Valley Hunt Zone into the western portion of Cache Creek Hunt Zone needs to be addressed.

The Department recommends modifying the adjacent Hunt Zone boundaries to bound closed populations (i.e., demographically and genetically interacting populations). The intended results of this recommendation will enhance regulated harvest assessment towards achieving management objectives and eliminate a problematic boundary protrusion.

Siskiyou Roosevelt Elk Hunt Zone

- Amend subsection 364(r)(1)(A)(2) to increase antlerless tag quota in the Siskiyou Roosevelt Elk Hunt Zone.
- Add subsection 364(r)(1)(B)(5) to adjust the Siskiyou Bull hunt season from September to October.

Siskiyou Roosevelt Elk Hunt Zone: current (2022) public tag quota for the Siskiyou Hunt Zone is 20 antlerless tags and 20 bull tags. The bull and antlerless hunt periods are concurrent. Elk populations in this Hunt Zone tend to concentrate on private property and human-elk conflict has exceeded tolerable levels in some areas. The observed bull:cow ratio (3mm:100ff) is below the Elk Conservation and Management Plan objective (25mm:100ff). The concurrent bull and antlerless hunt seasons have resulted in bull and antlerless hunter conflict and poor hunt experiences.

The Department recommends increased antlerless harvest and shifting the bull season to a later hunt period. The intended results of this recommendation will provide more public hunt opportunity, reduce elk density, reduce conflict, achieve sex ratio objective, and distribute bull and antlerless hunters across different hunt seasons, increasing quality of the hunt experience.

Northwestern Roosevelt Elk Hunt Zone

- Amend subsection 364(r)(2)(A)(1) to increase bull tag quota in the Northwestern Roosevelt Elk Hunt Zone.

Northwestern Roosevelt Elk Hunt Zone: current (2022) public tag quota for the Northwestern Hunt Zone is 15 antlerless tags, three bull tags, and three either-sex tags. Elk populations in this Hunt Zone tend to concentrate on private property and human-elk conflict has exceeded tolerable levels in some areas. High elk density may also contribute to increased disease transmission. The observed bull:cow ratios (32mm:100ff) are above the Elk Conservation and Management Plan objective (15mm:100ff).

The Department recommends increasing public bull harvest in this hunt zone. The intended results of this recommendation include increased public hunt opportunity, reduced population density, reduced disease transmission, reduced conflict, and trend toward achieving the sex ratio objective.

La Panza Tule Elk Hunt Zone and Central Coast Tule Elk Management Unit

- Amend subsection 364(d)(2)(A) to modify the boundaries of the La Panza General Methods Tule Elk Hunt.
- Amend subsection 364(d)(3)(A) to establish the Central Coast General Methods Tule Elk Hunt.
- Amend subsection 364(d)(4)(A) to establish the Gabilan General Methods Tule Elk Hunt.
- Add subsections 364(s)(2)(A)(1), 364(s)(2)(A)(2), and 364(s)(2)(A)(5) to authorize bull harvest, antlerless harvest, and establish season dates for the Tehachapi General Methods Rocky Mountain Elk Hunt.
- Add subsections 364(u)(3)(A)(1), 364(u)(3)(A)(2), and 364(u)(3)(A)(5) to authorize bull harvest, antlerless harvest, and establish season dates for the Central Coast General Methods Tule Elk Hunt.
- Add subsections 364(u)(4)(A)(1), 364(u)(4)(A)(2), and 364(u)(4)(A)(5) to authorize bull harvest, antlerless harvest, and establish season dates for the Gabilan General Methods Tule Elk Hunt.

La Panza Tule Elk Hunt Zone and Central Coast Tule Elk Management Unit: current (2022) public tag quotas for the La Panza Hunt Zone include 1 apprentice antlerless tag, 11 antlerless tags across two hunt periods (5 and 6 tags, for La Panza Periods 1 and 2, respectively), and 12 bull tags across two hunt periods (6 and 6 tags, for La Panza Periods 1 and 2, respectively). The tule elk population has expanded into the Central Coast Tule Elk Management Unit and increased substantially within the Camp Roberts and Salinas/Fremont Peak Tule Elk Management Units. There is no authorized

public elk harvest in those three units. Elk conflict has exceeded tolerable levels in some areas. The observed bull:cow ratios for the modified La Panza (33mm:100ff) and new Gabilan (41mm:100ff) Hunt Zones are above the Elk Conservation and Management Plan objective (25mm:100ff) for the La Panza and Salinas/Fremont Peak Tule Elk Management Units. The observed bull:cow ratio for the new Central Coast Hunt Zone (29mm:100ff) is above the the Elk Conservation and Management Plan objective (25mm:100ff).

The Department recommends modifying the La Panza hunt zone to a smaller area, creating a new Gabilan Tule Elk Hunt Zone and General Methods Hunt from most of the Salinas/Fremont Peak Elk Management Unit and the full extent of the remaining La Panza Hunt Zone, and creating a new Central Coast Tule Elk Hunt Zone and General Methods Hunt, which will incorporate the Camp Roberts Tule Elk Management Unit. The modified and new zones will bound closed populations which will enhance regulated harvest assessment towards achieving management objectives outlined in the 2018 Elk Conservation and Management Plan.

Other changes

- Several non-substantive changes are proposed to provide consistency among Title 14 sections. These revisions are necessary to provide consistency and clarity in the regulatory language across the section
 - Amend subsections 364(a) through 364(q) to:
 - Consistently use a hyphen between place names, such as state and county lines.
 - Consistently use “along” for non-road boundaries, such as state and county lines, creeks, and the coastline.
 - Consistently use “on” for road boundaries.
 - Consistently refer to Interstates as “Interstate #.”
 - Consistently end zone boundary segments with a semicolon.
 - Consistently capitalize “County” when in reference to one or more specific counties; use lowercase “county line” when in reference to the county line.
 - Remove the word “California” from hunt names, as all hunts are located in California.
 - Consistently use “intersection” in zone boundaries in which roads meet; use “junction” when at least one non-road forms the boundary.
 - Consistently reference a numbered road first, then in parentheses, reference the name of the road, if applicable.
 - Consistently begin a hunt zone description with “In that (singular)/those (plural) portions...” and follow the county name(s) with “within a line.”
 - Consistently capitalize “Section” in zone boundaries.
 - Amend section 364(i) to:
 - Correct the spelling of “fundraising.”
 - Replace en- and em-dashes with hypens.
 - Insert colon after the hunt name.
 - Amend Section 364(r) to:

- Clarify that apprentice hunt tagholders under 18 years of age shall be accompanied by a nonhunting, licensed adult chaperone 18 years of age or older.
- Correct the spelling of “chaperone.”
- Amend Sections 364(r) through 364(aa) to:
 - Standardize season language.
 - Insert zeros in place of blank cells.
 - Remove the word “California” from hunt names, as all hunts are located in California.
 - Consistently use “continue” to describe the hunt season length.
 - Capitalize “Period” in reference to a hunt period, followed by a numeral.
 - Specify section number and hunt name for all hunts.
- Amend Sections 364(u), 364(w), and 364.1(l) to correct the spelling of “Tinemaha.”
- Amend Section 364(x) to correct the spelling of “muzzleloader.”
- Amend Section 364(z) to correct the spelling of “fundraising/er.”

(b) Goals and Benefits of the Regulation

The goals and benefits of the regulations are to help achieve management objectives related to current environmental, biological, and social conditions related to relevant elk populations.

(c) Authority and Reference Sections from Fish and Game Code for Regulation

Authority: Section(s) 200, 203, 203.1, 265, 332 and 1050, Fish and Game Code

Reference: Section(s) 325,332,1050,1570,1571, 1572, 1573 and 1574, Fish and Game Code

(d) Specific Technology or Equipment Required by Regulatory Change

None

(e) Identification of Reports or Documents Supporting Regulation Change

California Department of Fish and Wildlife. (2018). [2018 Elk Management Plan](https://nrm.dfg.ca.gov/FileHandler.ashx?DocumentID=162912&inline).
<https://nrm.dfg.ca.gov/FileHandler.ashx?DocumentID=162912&inline>

(f) Public Discussions of Proposed Regulations Prior to Notice Publication

Wildlife Resources Committee, May 19, 2022

Wildlife Resources Committee, September 15, 2022

IV. Description of Reasonable Alternatives to Regulatory Action

(a) Alternatives to Regulation Change

No alternatives were identified by or brought to the attention of Commission staff that would have the same desired regulatory effect.

(b) No Change Alternative

If the proposed amendments are not adopted, elk conflict will continue and may increase in some areas, and result in increased requests for elk depredation permits to alleviate conflict; disease, including treponeme associated hoof disease (TAHD), may continue to spread resulting in significant animal welfare issues; non-native Rocky Mountain elk may continue to expand their range and result in overlap with endemic tule elk in the Owens Valley; hunt experience may continue to be poor for some hunters if the relevant antlerless and bull periods remain concurrent; hunt zone boundaries may not accurately reflect observed biological processes, resulting in inaccurate interpretation of harvest metrics, and a problematic boundary protrusion may be exploited in the future by hunters with a tag for the adjacent hunt zone. The Department will miss opportunity to gain additional age and genetic data, among other information, from harvested elk to assist in population monitoring, lessening the Department's ability to better understand and manage the populations that are currently unharvested.

V. Mitigation Measures Required by Regulatory Action

The proposed regulatory action will have no significant adverse effect on the environment, and therefore, no mitigation measures are required.

VI. Impact of Regulatory Action

The potential for significant statewide adverse economic impacts that might result from the proposed regulatory action has been assessed, and the following initial determinations relative to the required statutory categories have been made:

(a) Significant Statewide Adverse Economic Impact Directly Affecting Businesses, Including the Ability of California Businesses to Compete with Businesses in Other States

The proposed regulation will not have a significant statewide adverse economic impact directly affecting business, including the ability of California businesses to compete with businesses in other states. This regulatory action will not impose cost impacts that a representative business would necessarily incur in reasonable compliance with the proposed regulation.

(b) Impact on the Creation or Elimination of Jobs Within the State, the Creation of New Businesses or the Elimination of Existing Businesses, or the Expansion of Businesses in California; Benefits of the Regulation to the Health and Welfare of California Residents, Worker Safety, and the State's Environment.

The Commission does not anticipate impacts on the creation or elimination of jobs within the state, the creation of new business, the elimination of existing businesses, or the expansion of businesses in California because the expected economic impacts of the proposed regulations are unlikely to be substantial enough to substantially stimulate demand for goods or services related to elk hunting. If greater numbers of hunters visit the areas in the state with increased opportunities, businesses that provide goods and services to elk hunters could benefit from small increases in sales. The Commission does not anticipate direct benefits to the general health and welfare of California residents, the environment, or to worker safety, however California residents will benefit generally through access to the expanded recreational opportunities created by the proposed changes.

(c) Cost Impacts on a Representative Private Person or Business

The Commission is not aware of any cost impacts that a representative private person or business would necessarily incur in reasonable compliance with the proposed action.

(d) Costs or Savings to State Agencies or Costs/Savings in Federal Funding to the State

The Department anticipates an estimated \$57,891 increase in tag sales revenue with the implementation of the proposed regulation for the potential sale of 111 resident elk tags and 1 non-resident elk tag.

(e) Nondiscretionary Costs/Savings to Local Agencies

None.

(f) Programs Mandated on Local Agencies or School Districts

None.

(g) Costs Imposed on Any Local Agency or School District that is Required to be Reimbursed Under Part 7 (commencing with Section 17500) of Division 4, Government Code

None.

(h) Effect on Housing Costs

None.

VII. Economic Impact Assessment

(a) Effects of the Regulation on the Creation or Elimination of Jobs Within the State

The Commission does not anticipate impacts on the creation or elimination of jobs within the state.

(b) Effects of the Regulation on the Creation of New Businesses or the Elimination of Existing Businesses Within the State

The Commission does not anticipate impacts on the creation of new business, the elimination of existing businesses within the state because the expected economic impacts of the proposed regulations are unlikely to be substantial enough to stimulate demand for goods or services related to elk hunting.

(c) Effects of the Regulation on the Expansion of Businesses Currently Doing Business Within the State

The Commission does not anticipate impacts on the expansion of businesses currently doing business within the state because the expected economic impacts of the proposed regulations are unlikely to be substantial enough to stimulate demand for goods or services related to elk hunting.

(d) Benefits of the Regulation to the Health and Welfare of California Residents

(e) Hunting is an outdoor activity that can provide several health and welfare benefits to California residents. Hunters and their families benefit from fresh game to eat, and from the

benefits of outdoor recreation, including exercise. People who hunt have a special connection with the outdoors and an awareness of the relationships between wildlife, habitat, and humans, and can be a family tradition and a bonding activity. Benefits of the Regulation to Worker Safety

The Commission does not anticipate impacts on worker safety.

(f) Benefits of the Regulation to the State's Environment

As set forth in Fish and Game Code section 1700, it is the policy of the state to encourage the conservation, maintenance, and utilization of fish and wildlife resources for the benefit of all the citizens of the state. The objectives of this policy include, but are not limited to, the maintenance of populations of elk to ensure their continued existence and supporting recreational opportunity. Adoption of scientifically-based elk seasons and tag quotas provides for the maintenance of elk populations to ensure those objectives are met. The fees that hunters pay for licenses and tags help fund wildlife conservation.

Informative Digest/Policy Statement Overview

Current regulations in Section 364 provide definitions, hunting zone descriptions, season opening and closing dates, methods of take (e.g., general methods, archery only, muzzleloader only), tag designations (e.g., bull, spike bull, antlerless, and either-sex), tag quotas (total number of hunting tags to be made available), and bag and possession limits for elk hunting. Section 364.1 provides season opening and closing dates, methods of take, tag designations, tag quotas, and bag and possession limits for elk hunting administered through the SHARE hunt program. Individuals are awarded an elk hunting tag through the Department's Big Game Drawing or SHARE hunt program drawing.

Harvest of an elk is authorized for an individual awarded a tag for a respective hunt zone or SHARE property and season. Tag quotas are established based on a variety of factors including population density and abundance, age and sex composition, elk distribution, and human-elk conflict levels, among other population objectives, factors, and considerations. The Department has identified the following areas where increased public elk hunting opportunities are feasible and support achievement of population objectives:

Tejon Rocky Mountain Elk Management Unit. Currently there is no hunt zone established which authorizes public elk harvest in the Tejon Rocky Mountain Elk Management Unit

Bear Valley and Cache Creek Tule Elk Hunt Zones. Current (2022) public tag quota for these zones are 1 antlerless tag and 2 bull tags (Bear Valley), and 1 apprentice bull tag, 2 antlerless tags, and 2 bull tags (Cache Creek).

Siskiyou Roosevelt Elk Hunt Zone. Current (2022) public tag quota for the Siskiyou Hunt Zone is 20 antlerless tags and 20 bull tags. The bull and antlerless hunt periods are concurrent.

Northwestern Roosevelt Elk Hunt Zone. Current (2022) public tag quota for the Northwestern Hunt Zone is 15 antlerless tags, 3 bull tags, and 3 either-sex tags.

La Panza Tule Elk Hunt Zone and Central Coast Tule Elk Management Unit. Current (2022) public tag quotas for the La Panza Hunt Zone is 1 apprentice antlerless tag, 11 antlerless tags across two hunt periods (5 and 6 tags, respectively), and 12 bull tags across two hunt periods (6 and 6, respectively). There is currently no authorized public elk harvest in the Central Coast Tule Elk Management Unit.

The proposed regulatory changes will:

Siskiyou Roosevelt Elk Hunt Zone. Set public tag quota for the Siskiyou Hunt Zone to 20 bull tags and 30 antlerless tags. Shift the bull season from September to October.

Northwestern Roosevelt Elk Hunt Zone. Set public tag quota for the Northwestern Hunt Zone to 25 bull tags, 15 antlerless tags, and 3 either-sex tags.

Bear Valley and Cache Creek Tule Elk Hunt Zones. Modify adjacent Hunt Zone boundaries to bound demographically and genetically interacting populations.

The goals and benefits of the regulations are to help achieve management objectives related to current environmental, biological, and social conditions related to relevant elk populations.

Tejon Rocky Mountain Elk Management Unit. Create a Tehachapi Rocky Mountain Elk Hunt Zone and General Methods Hunt, with tag allowances set at 5 bull and 10 antlerless.

La Panza Tule Elk Hunt Zone and Central Coast Tule Elk Management Unit. Decrease the size of the La Panza Hunt Zone, create a new Gabilan Tule Elk Hunt Zone, and create a new Central Coast Tule Elk Zone, which incorporates the existing Camp Roberts Tule Elk Management Unit. For each of the new Hunt Zones, create a General Methods Hunt, with tag allowances set at: 6 bull and 5 antlerless (La Panza Period 1), 6 bull and 5 antlerless (La Panza Period 2), 10 bull and 10 antlerless (Central Coast), and 4 bull and 6 antlerless (Gabilan).

Benefit of the Regulations:

The proposed regulatory action is designed to help achieve management objectives related to current environmental, biological, and social conditions, as outlined in the Elk Conservation and Management Plan.

Consistency and Compatibility with Existing Regulations:

Article IV, Section 20 of the State Constitution specifies that the Legislature may delegate to Commission such powers relating to the protection and propagation of fish and game as the Legislature sees fit. Commission staff has searched the California Code of Regulations and has found no other state regulations that address the definitions, hunting zone descriptions, season opening and closing dates, methods of take (e.g., general methods, archery only, muzzleloader only), tag designations (e.g., bull, spike bull, antlerless, and either-sex), tag quotas (total number of hunting tags to be made available), and bag and possession limits for elk hunting. The Commission has reviewed its own regulations and finds that the proposed regulations are consistent with other big game mammal regulations in Title 14, CCR, and therefore finds that the proposed regulations are neither inconsistent nor incompatible with existing state regulations.

Proposed Regulatory Language

Section 364, Title 14, CCR, is amended to read:

§ 364. Elk Hunts, Seasons, and Number of Tags.

(a) Department Administered General Methods Roosevelt Elk Hunts:

(1) Siskiyou General Methods Roosevelt Elk Hunt:

(A) Area: In that portion of Siskiyou County within a line beginning at the junction of Interstate Highway 5 ~~with and~~ the ~~California-Oregon~~ California-Oregon state line; east along the California-Oregon state line to Hill Road at Ainsworth Corner; south ~~along on~~ on Hill Road to Lava Beds National Monument Road; south ~~along on~~ on Lava Beds National Monument Road to USDA Forest Service Road 49; south ~~along on~~ on USDA Forest Service Road 49 to USDA Forest Service Road 77; west ~~along on~~ on USDA Forest Service Road 77 to USDA Forest Service Road 15 (Harris Spring Road); south ~~along on~~ on USDA Forest Service Road 15 to USDA Forest Service Road 13 (Pilgrim Creek Road); southwest ~~along on~~ on USDA Forest Service Road 13 to Highway 89; northwest ~~along on~~ on Highway 89 to Interstate Highway 5; north ~~along on~~ on Interstate Highway 5 to the point of beginning.

(2) Northwestern ~~California~~ Roosevelt Elk Hunt:

(A) Area: In those portions of Humboldt and Del Norte ~~counties~~ Counties within a line beginning at the intersection of Highway 299 and Highway 96; north ~~along on~~ on Highway 96 to the ~~Del Norte-Siskiyou~~ Del Norte-Siskiyou county line; north along the ~~Del Norte-Siskiyou~~ Del Norte-Siskiyou county line to the ~~California-Oregon~~ California-Oregon state line; west along the California-Oregon state line to the Pacific ~~Coastline~~, coastline; south along the Pacific coastline to the ~~Humboldt-Mendocino~~ Humboldt-Mendocino county line; east along the ~~Humboldt-Mendocino~~ Humboldt-Mendocino county line to the ~~Humboldt-Trinity~~ Humboldt-Trinity county line; north along the ~~Humboldt-Trinity~~ Humboldt-Trinity county line to Highway 299; west ~~along on~~ on Highway 299 to the point of beginning.

(3) Marble Mountains General Methods Roosevelt Elk Hunt:

(A) Area: In those portions of Humboldt, Tehama, Trinity, Shasta and Siskiyou ~~counties~~ Counties within a line beginning at the intersection of Interstate Highway 5 and the ~~California-Oregon~~ California-Oregon state line; west along the California-Oregon state line to the Del Norte ~~County~~ county line; south along the Del Norte ~~County~~ county line to the ~~intersection~~ junction of the ~~Siskiyou-Humboldt~~ Siskiyou-Humboldt county line ~~lines~~; east along the ~~Siskiyou-Humboldt~~ Siskiyou-Humboldt county line ~~lines~~ line to Highway 96; south ~~along on~~ on Highway 96 to Highway 299; south ~~along on~~ on Highway 299 to the ~~Intersection of the~~ Humboldt-Trinity County Humboldt-Trinity county line; south along the ~~Humboldt Trinity County~~ Humboldt-Trinity county line to the ~~intersection of~~ intersection of Highway 36; east ~~along on~~ on Highway 36 to the ~~intersection of~~ intersection of Interstate 5; north on Interstate Highway 5 to the point of beginning.

(b) Department Administered General Methods Rocky Mountain Elk Hunts:

(1) Northeastern ~~California~~ General Methods Rocky Mountain Elk Hunt:

(A) Area: Those portions of Siskiyou, Modoc, Lassen, and Shasta ~~counties~~ Counties within a line beginning in Siskiyou County at the junction of the ~~California-Oregon~~ California-

Oregon state line and Hill Road at Ainsworth Corner; east along the ~~California-Oregon~~ California-Oregon state line to the ~~California-Nevada~~ California-Nevada state line; south along the ~~California-Nevada~~ California-Nevada state line to the ~~Tuledad-Red Rock-Clarks Valley Road~~ Tuledad-Red Rock-Clarks Valley Road (Lassen County Roads Road 506, 512 and 510) (Tuledad Road); west along the ~~Tuledad-Red Rock-Clarks Valley Road~~ on Lassen County Road 506 to Lassen County Road 512 (Red Rock Road); west on Lassen County Road 512 to Lassen County Road 510 (Clark's Valley Road); west on Lassen County Road 510 to Highway 395 at Madeline; west on Lassen County Road 527 (Ash Valley Road) to Highway 139/299 in Adin; south on Highway 139 Highway 299/139, then Highway 139 to the intersection of Highway 36 in Susanville; west on Highway 36 to the intersection of Interstate 5 in Red Bluff; north on Interstate 5 to Highway 89; southeast along on Highway 89 to USDA Forest Service Road 13 (Pilgrim Creek Road); northeast along on USDA Forest Service Road 13 to USDA Forest Service Road 15 (Harris Spring Road); north along on USDA Forest Service Road 15 to USDA Forest Service Road 77; east along on USDA Forest Service Road 77 to USDA Forest Service Road 49; north along on USDA Forest Service Road 49 to Lava Beds National Monument Road; north along on Lava Beds National Monument Road to Hill Road; north along on Hill Road to the point of beginning.

(2) Tehachapi Rocky Mountain Elk Hunt:

(A) Area: In those portions of Kern and Los Angeles Counties within a line beginning at the intersection of Highways 99 and 65; north on Highway 65 to the Kern-Tulare county line; east along the Kern-Tulare county line to Highway 395; south on Highway 395 to Highway 14; southwest on Highway 14 to Highway 138; west on Highway 138 to Interstate 5; north on Interstate 5 to Highway 99; north on Highway 99 to the point of beginning.

(c) Department Administered General Methods Roosevelt/Tule Elk Hunt:

(1) Mendocino General Methods Roosevelt/Tule Elk Hunt:

(A) Area: These portions in In that portion of Mendocino County within a line beginning at the Pacific Coastline coastline and the Mendocino/Humboldt County Mendocino-Humboldt county line south of Shelter Cove; east along the Mendocino/Humboldt County Mendocino-Humboldt county line to the intersection of the Humboldt, Mendocino, and Trinity County lines the Mendocino-Trinity county line; south and east along the Mendocino/Trinity County Mendocino-Trinity county line to the intersection of the Mendocino, Trinity, and Tehama County lines Mendocino-Tehama county line; south along the Mendocino County Mendocino-Glen county line, then the Mendocino-Lake county line to the intersection of Highway 20; north and west along on Highway 20 to the intersection of Highway 101 near Calpella; south along on Highway 101 to the intersection of Highway 253; southwest along on Highway 253 to the intersection of Highway 128; north along on Highway 128 to the intersection of Mountain View Road near the town of Boonville; west along on Mountain View Road to the intersection of Highway 1; south along on Highway 1 to the intersection junction of the Garcia River; west along the Garcia River to the Pacific Coastline coastline; north along the Pacific Coastline coastline to the point of beginning.

(d) Department Administered General Methods Tule Elk Hunts:

(1) Cache Creek General Methods Tule Elk Hunt:

(A) Area: ~~These~~ In those portions of Lake, Colusa and Yolo ~~counties~~ Counties within the following line: a line beginning at the junction of Highway 20 and Highway 16 the Colusa-Lake county line (County Line Ridge); south along the Colusa-Lake county line to the Yolo county line; east along the Yolo County line to Highway 16; south on Highway 16 to Reiff-Rayhouse Road; west on Reiff-Rayhouse Road to Morgan Valley Road; west on Morgan Valley Road to Highway 53; north on Highway 53 to Highway 20; west on Highway 20 to Forest Road 303; east on Highway 20 to the fork of Cache Creek; north on the north fork of Cache Creek to Indian Valley Reservoir; east on the south shore of Indian Valley Reservoir to Walker Ridge-Indian Valley Reservoir Access Road; east on Walker Ridge-Indian Valley Reservoir Access Road to Walker Ridge Road; north and east on Forest Road 303 to Walker Ridge Road; south on Walker Ridge Road to Highway 20; east on Highway 20 to the point of beginning.

(B) Special Conditions: All tagholders will be required to attend a mandatory orientation. Tagholders will be notified of the time and location of the orientation meeting upon receipt of their elk license tags.

(2) La Panza General Methods Tule Elk Hunt:

(A) Area: ~~In those portions of San Luis Obispo, Kern, Monterey, Kings, Fresno, San Benito, and Santa Barbara counties~~ Counties within a line beginning in ~~San Benito County~~ at the junction of Highway 25 and County Highway J1 near the town Pacines, south along Highway 25 to La Gloria road, west along La Gloria road, ~~La Gloria road becomes Gloria road,~~ west along Gloria road to Highway 101 near Gonzales, San Luis Obispo County at the intersection of Highway 101 and Highway 46; south along on Highway 101 to Highway 166 in San Luis Obispo County; east along on Highway 166 to Highway 33 at Maricopa in Kern County; north and west along on Highway 33 to Highway 198 at Coalinga in Fresno 46 in Kern County; north along Highway 33 to Interstate 5 in Fresno County, north along Interstate 5 to Little Panoche road/County Highway J1, southwest along Little Panoche road/County Highway J1 to the intersection of Little Panoche road/ County Highway J1 and Panoche road/County Highway J1 in San Benito County, northwest along Panoche road/County Highway J1; west on Highway 46 to the point of beginning.

(B) Special Conditions: All tagholders will be required to attend a mandatory orientation. Tagholders will be notified of the time and location of the orientation meeting upon receipt of their elk license tags.

(3) Central Coast General Methods Tule Elk Hunt:

(A) Area: In those portions of Monterey and San Luis Obispo Counties within a line beginning in Monterey County at the junction of Highway 1 and Elkhorn Slough; westward to the Pacific coastline at the Moss Landing Harbor mouth entrance; south along the Pacific coastline to the junction of the mouth of Santa Rosa Creek in San Luis Obispo County; south and east along Santa Rosa Creek to the bridge at Highway 1; south on Highway 1 to Highway 46; east on Highway 46 to Highway 101; north on Highway 101 to North Main Street in Salinas in Monterey County; south on North Main Street to Highway 183; north on Highway 183 to Highway 1; north on Highway 1 to the point of beginning, excluding the full extent of the Fort Hunter Liggett military installation.

(B) Special Conditions: All tagholders will be required to attend a mandatory orientation. Tagholders will be notified of the time and location of the orientation meeting upon receipt of their elk license tags.

(4) Gabilan General Methods Tule Elk Hunt:

(A) Area: In those portions of Monterey, San Benito, and Fresno Counties within a line beginning in Monterey County at the junction of the Pajaro River and the Pacific coastline; east along the Pajaro River to Highway 25; south on Highway 25 to San Felipe Road; south on San Felipe Road to San Benito Street; south on San Benito Street to Nash Road; east on Nash Road to Highway 25; south on Highway 25 to County Road J1 (Panoche Road) near the town of Paicines; southeast on County Road J1 to County Road J1 (Little Panoche Road); north on County Road J1 to Interstate 5 in Fresno County; south on Interstate 5 to Highway 33; south on Highway 33 to Highway 46; west on Highway 46 to Highway 101; north on Highway 101 to North Main Street in Salinas in Monterey County; south on North Main Street to Highway 183; north on Highway 183 to Highway 1; north on Highway 1 to the junction with Elkhorn Slough; westward to the Pacific coastline at the Moss Landing Harbor mouth entrance; north along the Pacific coastline to the point of beginning.

(B) Special Conditions: All tagholders will be required to attend a mandatory orientation. Tagholders will be notified of the time and location of the orientation meeting upon receipt of their elk license tags.

(3)(5) Bishop General Methods Tule Elk Hunt:

(A) Area: In that portion of Inyo County within a line beginning at the junction intersection of Highway 395 and Highway 6 in the town of Bishop; north and east along on Highway 6 to the junction of Silver Canyon Road; east along on Silver Canyon Road to the White Mountain Road (Forest Service Road 4S01) Forest Service Road 4S01 (White Mountain Road); south along the on White Mountain Road Forest Service Road 4S01 to Highway 168 at Westgard Pass; south and west along on Highway 168 to the junction of Highway 395; north on Highway 395 to the point of beginning.

(4)(6) Independence General Methods Tule Elk Hunt:

(A) Area: In that portion of Inyo County within a line beginning at the junction intersection of Highway 395 and Aberdeen Station Road; east on Aberdeen Station Road to its terminus at the southern boundary of Section 5, Township 11S, Range 35E; east along the southern boundary of sections 5, 4, 3, and 2, Township 11S, Range 35E to the Papoose Flat Road at Papoose Flat; south and east on Papoose Flat Road to Mazourka Canyon Road; south, south and then west on Mazourka Canyon Road to Highway 395; north along on Highway 395 to the point of beginning.

(5)(7) Lone Pine General Methods Tule Elk Hunt:

(A) Area: In that portion of Inyo County within a line beginning at the junction intersection of Highway 395 and Mazourka Canyon Road; east, east and then north on Mazourka Canyon Road to the Inyo National Forest Boundary at the junction of the southern boundary of Township 12S and the northern boundary of Township 13S; east along the southern boundary of Township 12S to Saline Valley Road; south on Saline Valley Road to

Highway 190; north, and then southwest on Highway 190 to the junction of Highway 395 at Olancho; north on Highway 395 to the point of beginning.

~~(6)~~(8) Tinemaha General Methods Tule Elk Hunt:

(A) Area: In that portion of Inyo County within a line beginning at the ~~junction~~ intersection of Highway 395 and Highway 168 in the town of Big Pine; north and east ~~along on~~ along on Highway 168 to the ~~junction of the~~ Death Valley Road; south and east ~~along the on~~ along on Death Valley Road to the ~~junction of the~~ Papoose Flat Road; south ~~along the on~~ along on Papoose Flat Road to the southern boundary of Section 2, Township 11S, Range 35E; west along the southern boundaries of ~~sections 2, 3, 4 and 5~~ Sections 2, 3, 4, and 5 to the terminus of the Aberdeen Station Road in Section 5, Township 11S, Range 35E; south and west ~~along the on~~ along on Aberdeen Station Road to Highway 395; north ~~along on~~ along on Highway 395 to the point of beginning.

~~(7)~~(9) West Tinemaha General Methods Tule Elk Hunt:

(A) Area: In that portion of Inyo County within a line beginning at the ~~junction~~ intersection of Highway 395 and Highway 168 in the town of Big Pine; south ~~along on~~ along on Highway 395 to the north junction of Fish Springs Road; south ~~along on~~ along on Fish Springs Road to the ~~junction of~~ Highway 395; south ~~along on~~ along on Highway 395 to Taboose Creek in Section 14, Township 11S, Range 34E; west along Taboose Creek to the Inyo County county line; north and west along the Inyo County county line to the ~~intersection~~ junction of Tinemaha Creek; east along Tinemaha Creek to the ~~intersection of~~ junction with McMurray Meadow Road; north on McMurray Meadow Road to the ~~intersection of~~ Glacier Lodge Road; north and east on Glacier Lodge Road to Crocker Avenue; east ~~along on~~ along on Crocker Avenue to Highway 395; north ~~along on~~ along on Highway 395 to the point of beginning.

~~(8)~~(10) Tinemaha Mountain General Methods Tule Elk Hunt:

(A) Area: In that portion of Inyo County ~~with a~~ within a line beginning at the intersection of Forest Service Road 9S21 (Glacier Lodge Road) (9S21) and Forest Service Road 9S03 (McMurray Meadow Road) (9S03); south on ~~McMurray Meadow Road~~ Forest Service Road 9S03 to the junction of Tinemaha Creek; west along Tinemaha Creek to the ~~Inyo County Inyo-Fresno county~~ Inyo-Tulare county line; north and west along the Inyo County county line to the southeast corner of Section 23, Township 10S, Range 32E; north along the eastern boundaries of sections 23, 14, 11, 2, Township 10S, Range 32E, and the eastern boundary of Section 36, Township 9S, Range 32E to Glacier Lodge Road; east ~~along on~~ along on Glacier Lodge Road to the point of beginning.

~~(9)~~(11) Whitney General Methods Tule Elk Hunt:

(A) Area: In that portion of Inyo County ~~with a~~ within a line beginning at the intersection of Highway 395 and Onion Valley Road; south on Highway 395 to the ~~intersection of~~ Whitney Portal Road; west ~~along on~~ along on Whitney Portal Road to the northern boundary of Section 36, Township 15S, Range 34E; west along the northern boundary of sections 36, 35, 34 and 33 Township 15S, Range 34 E to the ~~Inyo County Line~~ Inyo-Tulare county line; north along the ~~Inyo County Line~~ Inyo-Tulare county line to the ~~intersection~~ junction of Section 27 Township 13S, range 33E; east along the southern boundary of sections 27, 26 and 25 Township 13S, Range 33E; north along the eastern boundary of Section 25 Township 13S,

Range 33E to the ~~intersection of~~ Onion Valley Road; east ~~along on~~ Onion Valley Road to the point of beginning.

~~(10)~~(12) Goodale General Methods Tule Elk Hunt:

(A) Area: In that portion of Inyo County within a line beginning at the ~~junction~~ intersection of Highway 395 and Onion Valley Road; west ~~along on~~ Onion Valley Road to the ~~intersection~~ junction of the eastern boundary of Section 25 Township 13S, Range 33E; south along the eastern boundary of Section 25 Township 13S, Range 33E to the southern boundary of Section 25 Township 13S, Range 33E; west along the southern boundary of sections 27, 26, 25 Township 13S, Range 33E to the ~~Inyo County line~~ Inyo-Fresno county line; ~~North north~~ along the ~~Inyo County Line~~ Inyo-Fresno county line to Taboose Creek; east along Taboose Creek to the ~~intersection~~ junction of Highway 395; south ~~along on~~ Highway 395 to the point of beginning.

~~(11)~~(13) Grizzly Island General Methods Tule Elk Hunt:

(A) Area: Those lands owned and managed by the Department of Fish and Wildlife as the Grizzly Island Wildlife Area.

(B) Special Conditions: All tagholders will be required to attend a mandatory orientation. Tagholders will be notified of the time and location of the orientation meeting after receipt of their elk license tags.

~~(12)~~(14) Fort Hunter Liggett General Public General Methods Tule Elk Hunt:

(A) Area: That portion of Monterey County lying within the exterior boundaries of Fort Hunter Liggett, except as restricted by the Commanding Officer.

(B) Fort Hunter Liggett Special Conditions: See subsection 364(p).

~~(13)~~(15) East Park Reservoir General Methods Tule Elk Hunt:

(A) Area: In those portions of Glenn and Colusa ~~counties~~ Counties within a line beginning in Glenn County at the ~~junction~~ intersection of Interstate Highway 5 and Highway 162 at Willows; west ~~along on~~ Highway 162 (Highway 162 becomes Alder Springs Road) to the ~~Glenn-Mendocino County~~ Glenn-Mendocino county line; south along the ~~Glenn-Mendocino County~~ Glenn-Mendocino county line to the ~~Glenn-Lake County~~ Glenn-Lake county line; east and then south along the ~~Glenn-Lake County~~ Glenn-Lake county line to the ~~Colusa-Lake County~~ Colusa-Lake county line; west, then southeast along the ~~Colusa-Lake County~~ Colusa-Lake county line to Goat Mountain Road; north and east ~~along on~~ Goat Mountain Road to the ~~Lodoga-Stonyford Road~~ Lodoga-Stonyford Road; east ~~along the~~ on ~~Lodoga-Stonyford Road~~ Lodoga-Stonyford Road to the ~~Sites-Lodoga Road~~ Sites-Lodoga Road at Lodoga; east ~~along the~~ on ~~Sites-Lodoga Road~~ Sites-Lodoga Road to the ~~Maxwell-Sites Road~~ Maxwell-Sites Road at Sites; east ~~along the~~ on ~~Maxwell-Sites Road~~ Maxwell-Sites Road to Interstate Highway-5 at Maxwell; north ~~along on~~ Interstate Highway 5 to the point of beginning.

(B) Special Conditions:

1. All tagholders will be required to attend a mandatory orientation. Tagholders will be notified of the time and location of the orientation meeting after receipt of their elk license tags.

2. Access to private land may be restricted or require payment of an access fee.

3. A Colusa County ordinance prohibits firearms on land administered by the USDI Bureau of Reclamation in the vicinity of East Park Reservoir. A county variance currently allows for the use of muzzleloaders (as defined in Section 353) on Bureau of Reclamation land within the hunt ~~zone, hunters zone~~. Hunters are responsible for checking with county authorities for any change in the variance.

~~(14)~~(16) San Luis Reservoir General Methods Tule Elk Hunt:

(A) Area: In those portions of Merced, Fresno, San Benito, and Santa Clara ~~counties~~ Counties within a line beginning in Merced County at the ~~junction~~ intersection of Highway 152 and Interstate 5 near the town of Santa Nella, ~~Nella~~; west ~~along on~~ Highway 152 to Highway 156 in Santa Clara ~~County~~, County; southwest ~~along on~~ Highway 156 to Highway 25 near the town of Hollister in San Benito ~~County~~, County; south ~~along on~~ Highway 25 to County Road J1 (Panoche Road) in the town of ~~Paicine~~, Paicines; south and east ~~along on~~ County Road J1 to County Road J1 (Little Panoche Road, Road); North ~~north~~ and east ~~along on~~ County Road J1 (Little Panoche Road) to Interstate 5 in Fresno ~~County~~, County; north ~~along on~~ Interstate 5 to the point of beginning.

~~(15)~~(17) Bear Valley General Methods Tule Elk Hunt

(A) Area: in ~~In~~ those portions of Colusa, Lake, and Yolo ~~counties~~ Counties within a line beginning in Colusa County at the ~~junction~~ intersection of Interstate Highway 5 and ~~Maxwell Sites~~ Maxwell-Sites Road at Maxwell; west ~~along on~~ Maxwell-Sites Maxwell-Sites Road to the ~~Sites-Lodoga~~ Sites-Lodoga Road; west ~~along the Sites-Lodoga~~ on Sites-Lodoga Road to ~~Lodoga-Stonyford~~ Lodoga-Stonyford Road; west ~~along Lodoga-Stonyford~~ on Lodoga-Stonyford Road to Goat Mountain Road; west and south ~~along on~~ Goat Mountain Road to the Colusa-Lake ~~County~~ county line; south and west along the Colusa-Lake ~~County~~ county line to Forest Route M5; south ~~along on~~ Forest Route M5 to ~~Bartlett Springs Road~~ Forest Road 303; east ~~along Bartlett Springs Road to Highway 20~~ on Forest Road 303 to Walker Ridge Road; south ~~on Walker Ridge Road to Highway 20~~ on Walker Ridge Road to Highway 20; east on Highway 20 ~~to the fork of Cache Creek to the~~ Colusa-Lake county line (County Line Ridge); south along the Colusa-Lake county line to the Yolo county line; east along the Yolo county line to Highway 16; north ~~on the north fork of Cache Creek to Indian Valley Reservoir to Walker Ridge-Indian Valley Reservoir Access Road~~ on Walker Ridge-Indian Valley Reservoir Access Road to Walker Ridge Road; south ~~on Walker Ridge Road to Highway 20~~ on Walker Ridge Road to Highway 20; east ~~on Highway 20 to Highway 16~~ on Highway 20 to Highway 16; south on Highway 16 to Rayhouse Road; south and west on Rayhouse Road to the Yolo-Napa ~~County~~ county line; east and south along the Yolo-Napa ~~County~~ county line to Road 8053; east on Road 8053 to County Road 78A; east on County Road 78A to Highway 16; east on Highway 16 to Route E4 at Capay; north and east on Route E4 to Interstate Highway 5; north on Interstate Highway 5 to the point of beginning.

~~(16)~~(18) Lake Pillsbury General Methods Tule Elk Hunt:

(A) Area: in ~~these portions~~ In that portion of Lake County within a line beginning at the ~~junction of the Glenn-Lake County~~ Glenn-Lake-Mendocino county line and the ~~Mendocino County~~ Mendocino-Lake county line; south and west along the ~~Mendocino-Lake County~~ Mendocino-Lake county line to Highway 20; southeast on Highway 20 to the ~~intersection of Bartlett Springs Road~~; north and

east along on Bartlett Springs Road to the intersection of Forest Route M5; northwest on Forest Route M5 to the ~~colusa-Lake County Line~~ Colusa-Lake county line; northwest and east ~~on~~ along the ~~Colusa-Lake County Line~~ Colusa-Lake county line to the junction of the ~~Glenn-Colusa County Line~~ and the ~~Lake-Glenn County Line~~ Glenn county line; north and west ~~on~~ along the ~~Lake-Glenn County Line~~ Lake-Glenn County Line to the point of beginning.

~~(17)~~(19) Santa Clara General Methods Tule Elk Hunt:

(A) Area: ~~These~~ In those portions of Merced, Santa Clara, and Stanislaus Counties within the following line: a line beginning at the intersection junction of the Interstate 5 and the ~~San Joaquin/Stanislaus County~~ San Joaquin-Stanislaus county line; southeast along on Interstate 5 to the intersection of Highway 152; west along on Highway 152 to the intersection of Highway 101 near the town of Gilroy; north along on Highway 101 to the intersection of Interstate 680 near San Jose; north along on Interstate 680 to the intersection of the ~~Alameda/Santa Clara County~~ Alameda-Santa Clara county line; east along the ~~Alameda/Santa Clara County~~ Alameda-Santa Clara county line to the intersection of the ~~San Joaquin, Stanislaus, Alameda, Santa Clara County lines~~ junction of the San Joaquin-Stanislaus-Alameda-Santa Clara county lines; northeast along the ~~San Joaquin/Stanislaus County~~ San Joaquin-Stanislaus county line to the point of beginning.

~~(18)~~(20) Alameda General Methods Tule Elk Hunt:

(A) Area: ~~These~~ In those portions of Alameda and San Joaquin Counties within the following line: a line beginning at the intersection junction of the Interstate 5 and the ~~San Joaquin/Stanislaus County~~ San Joaquin-Stanislaus county line; southwest along the ~~San Joaquin/Stanislaus County~~ San Joaquin-Stanislaus county line to the intersection of the ~~San Joaquin, Stanislaus, Alameda, Santa Clara County lines~~ junction of the San Joaquin-Stanislaus-Alameda-Santa Clara county lines; west along the ~~Alameda/Santa Clara County Line~~ Alameda-Santa Clara county line to the intersection of Interstate 680; north along on Interstate 680 to the intersection of Interstate 580; east and south along on Interstate 580 to the intersection of Interstate 5; south along on Interstate 5 to the point of beginning.

(e) Department Administered General Methods Apprentice Elk Hunts:

(1) Marble Mountains General Methods Roosevelt Elk Apprentice Hunt:

(A) Area: The tag shall be valid in the area described in subsection 364(a)(3)(A).

(B) Special Conditions: Only persons possessing valid junior hunting licenses may apply for Apprentice Hunt license tags. Apprentice Hunt tagholders under 18 years of age shall be accompanied by a nonhunting, licensed adult ~~chaperon~~ chaperone 18 years of age or older while hunting.

(2) Northeastern ~~California~~ General Methods Rocky Mountain Elk Apprentice Hunt:

(A) Area: The tag shall be valid in the area described in subsection 364(b)(1)(A).

(B) Special Conditions: Only persons possessing valid junior hunting licenses may apply for Apprentice Hunt license tags. Apprentice Hunt tagholders under 18 years of age shall be accompanied by a nonhunting, licensed adult ~~chaperon~~ chaperone 18 years of age or older while hunting.

(3) Cache Creek General Methods Tule Elk Apprentice Hunt:

(A) Area: The tag shall be valid in the area described in subsection 364(d)(1)(A).

~~(B) Special Conditions:~~

~~1.~~

(B) Special Conditions: Only persons possessing valid junior hunting licenses may apply for Apprentice Hunt license tags. Apprentice Hunt tagholders under 18 years of age shall be accompanied by a nonhunting, licensed adult ~~chaperon~~ chaperone 18 years of age or older while hunting.

(4) La Panza General Methods Tule Elk Apprentice Hunt:

(A) Area: The tag shall be valid in the area described in subsection 364(d)(2)(A).

(B) Special Conditions:

1. All tagholders will be required to attend a mandatory orientation. Tagholders will be notified of the time and location of the orientation meeting after receipt of their elk license tags.

2. Only persons possessing valid junior hunting licenses may apply for Apprentice Hunt license tags. Apprentice Hunt tagholders under 18 years of age shall be accompanied by a nonhunting, licensed adult ~~chaperon~~ chaperone 18 years of age or older while hunting.

(5) Bishop General Methods Tule Elk Apprentice Hunt:

(A) Area: The tag shall be valid in the area described in subsection 364(d)~~(3)~~(5)(A).

(B) Special Conditions: Only persons possessing valid junior hunting licenses may apply for Apprentice Hunt license tags. Apprentice Hunt tagholders under 18 years of age shall be accompanied by a nonhunting, licensed adult ~~chaperon~~ chaperone 18 years of age or older while hunting.

(6) Grizzly Island General Methods Tule Elk Apprentice Hunt:

(A) Area: The tag shall be valid in the area described in subsection 364(d)~~(11)~~(13)(A).

(B) Special Conditions:

1. All tagholders will be required to attend a mandatory orientation. Tagholders will be notified of the time and location of the orientation meeting after receipt of their elk license tags.

2. Only persons possessing valid junior hunting licenses may apply for Apprentice Hunt license tags. Apprentice Hunt tagholders under 18 years of age shall be accompanied by a nonhunting, licensed adult ~~chaperon~~ chaperone 18 years of age or older while hunting.

(7) Fort Hunter Liggett General Methods General Public Tule Elk Apprentice Hunt:

(A) Area: The tag shall be valid in the area described in subsection 364(d)~~(12)~~(14)(A).

~~(B) Special Conditions: See subsection 364(p).~~

~~(f)~~

(B) Special Conditions:

1. See subsection 364(p).

2. Only persons possessing valid junior hunting licenses may apply for Apprentice Hunt license tags. Apprentice Hunt tagholders under 18 years of age shall be accompanied by a nonhunting, licensed adult ~~chaperon~~ chaperone 18 years of age or older while hunting.

(f) Department Administered Archery Only Elk Hunts:

(1) Northeastern ~~California~~ Archery Only Rocky Mountain Elk Hunt:

(A) Area: The tag shall be valid in the area described in subsection 364(b)(1)(A).

(B) Special Conditions: Elk may be taken with Archery Equipment only as specified in Section 354.

(2) Owens Valley Multiple Zone Archery Only Tule Elk Hunt:

(A) Area: The tag shall be valid in Bishop, Independence, Lone Pine, and Goodale, as areas described in subsections 364(d)(~~3~~)(5)(A), (d)(~~4~~)(6)(A), (d)(~~5~~)(7)(A) and (d)(~~10~~)(12)(A).

(B) Special Conditions: Elk may be taken with Archery Equipment only as specified in Section 354.

(3) Lone Pine Archery Only Tule Elk Hunt:

(A) Area: The tag shall be valid in the area described in subsection 364(d)(~~5~~)(7)(A).

(B) Special Conditions: Elk may be taken with Archery Equipment only as specified in Section 354.

(4) Tinemaha Archery Only Tule Elk Hunt:

(A) Area: The tag shall be valid in the area described in subsection 364(d)(~~6~~)(8)(A).

(B) Special Conditions: Elk may be taken with Archery Equipment only as specified in Section 354.

(5) Whitney Archery Only Tule Elk Hunt:

(A) Area: The tag shall be valid in the area described in subsection 364(d)(~~9~~)(11)(A).

(B) Special Conditions: Elk may be taken with Archery Equipment only as specified in Section 354.

(6) Fort Hunter Liggett General Public Archery Only Tule Elk Hunt:

(A) Area: The tag shall be valid in the area described in subsection 364(d)(~~12~~)(14)(A).

(B) Special Conditions:

1. See subsection 364(p).

~~(C)~~ 2. Elk may be taken with Archery Equipment only as specified in Section 354.

(g) Department Administered Muzzleloader Only Elk Hunts:

(1) Bishop Muzzleloader Only Tule Elk Hunt:

(A) Area: The tag shall be valid in the area described in subsection 364(d)(3)(5)(A).

(B) Special Conditions: Elk may be taken with muzzleloader equipment only as specified in Section 353.

(2) Independence Muzzleloader Only Tule Elk Hunt:

(A) Area: The tag shall be valid in the area described in subsection 364(d)(4)(6)(A).

(B) Special Conditions: Elk may be taken with muzzleloader equipment only as specified in Section 353.

(3) Fort Hunter Liggett General Public Muzzleloader Only Tule Elk Hunt:

(A) Area: The tag shall be valid in the area described in subsection 364(d)(12)(14)(A).

~~(B) Special Conditions: See subsection 364(p).~~

(B) Special Conditions:

1. See subsection 364(p).

~~(C) 2.~~ Elk may be taken with Muzzleloader Equipment only as specified in Section 353.

(h) Department Administered Muzzleloader/Archery Only Roosevelt Elk Hunts:

(1) Marble Mountains Muzzleloader/Archery Only Roosevelt Elk ~~Hunt.~~ Hunt:

(A) Area: The tag shall be valid in the area described in subsection 364(a)(3)(A).

(B) Special Conditions: Elk may be taken with archery or muzzleloader equipment only as specified in Sections 353 and 354.

(i) ~~Fund Raising~~ Fundraising Elk Hunts:

(1) ~~Multi-zone Fund Raising Elk Hunt.~~ Multi-zone Fundraising Elk Hunt:

(A) Area: The tag shall be valid in the areas described in subsections 364(a)(1)(A), (a)(2)(A), (a)(3)(A), (b)(1)(A), and (d)(2)(A).

(2) Grizzly Island ~~Fund Raising~~ Fundraising Tule Elk ~~Hunt.~~ Hunt:

(A) Area: The tag shall be valid in the area described in subsection 364(d)(11)(13)(A).

(B) Special Conditions: Advance reservations required by contacting the Grizzly Island Wildlife Area by telephone at (707) 425-3828.

(3) Owens Valley ~~Fund Raising~~ Fundraising Tule Elk ~~Hunt.~~ Hunt:

(A) Area: The tag shall be valid in Bishop, Independence, Lone Pine, Tinemaha, West Tinemaha, Tinemaha Mountain, Whitney, and Goodale as areas described in subsections 364(d)(3)(5)(A), (d)(4)(6)(A), (d)(5)(7)(A), (d)(6)(8)(A), (d)(7)(9)(A), (d)(8)(10)(A), (d)(9)(11)(A), and (d)(10)(12)(A).

(j) Military Only Elk ~~Hunts.~~ Hunts:

These hunts are sponsored by and tag quotas are set by the Department. The tags are assigned by and the hunts are administered by the Department of Defense.

(1) Fort Hunter Liggett Military Only General Methods Tule Elk Hunt:

(A) Area: The tag shall be valid in the area described in subsection 364(d)(12)(14)(A).

(B) Special Conditions: See subsection 364(p).

(2) Fort Hunter Liggett Military Only General Methods Tule Elk Apprentice Hunt:

(A) Area: The tag shall be valid in the area described in subsection 364(d)(12)(14)(A).

(B) Special Conditions:

1. See subsection 364(p).

~~(C)~~ 2. Only persons possessing valid junior hunting licenses may apply for Apprentice Hunt license tags. Apprentice Hunt tagholders shall be accompanied by a nonhunting, licensed adult ~~chaperon~~ chaperone 18 years of age or older while hunting.

(3) Fort Hunter Liggett Military Only Archery Only Tule Elk Hunt:

(A) Area: The tag shall be valid in the area described in subsection 364(d)(12)(14)(A).

(B) Special Conditions:

1. See subsection 364(p).

~~(C)~~ 2. Elk may be taken with Archery Equipment only as specified in Section 354.

(4) Fort Hunter Liggett Military Only Muzzleloader Only Tule Elk Hunt:

(A) Area: The tag shall be valid in the area described in subsection 364(d)(12)(14)(A).

(B) Special Conditions: See subsection 364(p).

(k) Bag and Possession Limit: Each elk tag is valid only for one elk per season and only in the hunt area ~~drawn~~ drawn, and an individual shall only be eligible for one elk tag per season through section 364.

~~(A)(l)~~ Definitions:

(1) Bull elk: Any elk having an antler or antlers at least four inches in length as measured from the top of the skull.

(2) Spike bull: A bull elk having no more than one point on each antler. An antler point is a projection of the antler at least one inch long and longer than the width of its base.

(3) Antlerless elk: Any elk, with the exception of spotted calves, with antlers less than four inches in length as measured from the top of the skull.

(4) ~~Either-sex~~ Either-sex elk: For the purposes of these regulations, ~~either-sex~~ either-sex is defined as bull elk, spike elk, or antlerless elk.

(m) Method of Take: Only methods for taking elk as defined in Sections 353 and 354 may be used.

(n) Tagholder Responsibilities:

(1) No tagholder shall take or possess any elk or parts thereof governed by the regulations except herein provided.

(2) The department reserves the right to use any part of the tagholder's elk for biological analysis as long as the amount of edible meat is not appreciably decreased.

(3) Any person taking an elk which has a collar or other marking device attached to it shall provide the department with such marking device within 10 days of taking the elk.

(o) The use of dogs to take or attempt to take elk is prohibited.

(p) Fort Hunter Liggett Special Conditions:

(1) All tagholders hunting within the exterior boundaries of Fort Hunter Liggett will be required to attend a mandatory hunter orientation. Tagholders will be notified of the time and location of the orientation meeting upon receipt of their elk license tags.

(2) Tagholders hunting within the exterior boundaries of Fort Hunter Liggett shall be required to purchase an annual hunting pass available from Fort Hunter Liggett.

(3) All successful tagholders hunting within the exterior boundaries of Fort Hunter will be required to have their tags validated on Fort Hunter Liggett prior to leaving.

(4) Due to military operations and training, the specified season dates within the exterior boundaries of Fort Hunter Liggett are subject to further restriction, cancellation, or may be rescheduled, between August 1 and January 31, by the Commanding Officer.

(q) [subsection reserved]

(r) Department Administered General Methods Roosevelt Elk Hunts

§	Hunt	1. Bull Tags	2. Antlerless Tags	3. Either-Sex Tags	4. Spike Tags	5. Season
(1)(A)	<u>Siskiyou Antlerless</u>	0	20 <u>30</u>	<u>0</u>	<u>0</u>	Shall open on the Wednesday preceding the second Saturday in September and continue for 12 consecutive days.
<u>(1)(B)</u>	<u>Siskiyou Bull</u>	<u>20</u>	<u>0</u>	<u>0</u>	<u>0</u>	<u>Shall open on the Wednesday preceding the second Saturday in October and continue for 12 consecutive days.</u>

§	Hunt	1. Bull Tags	2. Antlerless Tags	3. Either-Sex Tags	4. Spike Tags	5. Season
(2)(A)	Northwestern	3 <u>25</u>	15	3	<u>0</u>	Shall open on the first Wednesday in September and continue for 23 consecutive days.
(3)(A)	Marble Mountains	34	8	<u>0</u>	<u>0</u>	Shall open on the Wednesday preceding the second Saturday in September and continue for 12 consecutive days.

(s) Department Administered General Methods Rocky Mountain Elk Hunts

§	Hunt	1. Bull Tags	2. Antlerless Tags	3. Either-Sex Tags	4. Spike Tags	5. Season
(1)(A)	Northwestern <u>Northeastern</u> California Bull	15	<u>0</u>	<u>0</u>	<u>0</u>	The bull season shall <u>Shall</u> open on the Wednesday preceding the third Saturday in September and continue for 12 consecutive days <u>days</u> .
(2)(A) <u>(1)(B)</u>	Northeastern California Antlerless	<u>0</u>	10	<u>0</u>	<u>0</u>	The antlerless season shall <u>Shall</u> open on the second Wednesday in November and continue for 12 consecutive days.
<u>(2)(A)</u>	<u>Tehachapi</u>	<u>5</u>	<u>10</u>	<u>0</u>	<u>0</u>	<u>Shall open on the first Saturday in September and continue for 30 consecutive days.</u>

(t) Department Administered General Methods Roosevelt/Tule Elk Hunts

§	Hunt	1. Bull Tags	2. Antlerless Tags	3. Either-Sex Tags	4. Spike Tags	5. Season
(1)(A)	Mendocino	2	0	<u>0</u>	<u>0</u>	The season shall <u>Shall</u> open on the Wednesday preceding the fourth Saturday in September and continue for 12 consecutive days.

(u) Department Administered General Methods Tule Elk Hunts

§	Hunt	1. Bull Tags	2. Antlerless Tags	3. Either-Sex Tags	4. Spike Tags	5. Season
(1)(A)	Cache Creek Bull	2	<u>0</u>	<u>0</u>	<u>0</u>	The Bull season shall <u>Shall</u> open on the second Saturday in October and continue for 16 consecutive days.
<u>(1)(B)</u>	<u>Cache Creek Antlerless</u>	<u>0</u>	2	<u>0</u>	<u>0</u>	The Antlerless season shall <u>Shall</u> open on the third Saturday in October and continue for 16 consecutive days.
(2)(A)	La Panza Period 1	6	5	<u>0</u>	<u>0</u>	Shall open on the second Saturday in October and extend <u>continue</u> for 23 consecutive day <u>days</u> .
<u>(2)(B)</u>	<u>La Panza Period 2</u>	6	6	<u>0</u>	<u>0</u>	Shall open on the second Saturday in November and extend <u>continue</u> for 23 consecutive days.
<u>(3)(A)</u>	<u>Central Coast</u>	<u>10</u>	<u>10</u>	<u>0</u>	<u>0</u>	<u>Shall open on the first Saturday in October and continue for 60 consecutive days.</u>

§	Hunt	1. Bull Tags	2. Antlerless Tags	3. Either-Sex Tags	4. Spike Tags	5. Season
<u>(4)(A)</u>	<u>Gabilan</u>	<u>4</u>	<u>6</u>	<u>0</u>	<u>0</u>	<u>Shall open on the second Saturday in November and continue for 23 consecutive days.</u>
(3) <u>(5)(A)</u>	Bishop Period 3	0	0	<u>0</u>	<u>0</u>	Shall open on the third Saturday in October and extend <u>continue</u> for 9 <u>nine</u> consecutive days.
<u>(5)(B)</u>	<u>Bishop</u> Period 4	0	0	<u>0</u>	<u>0</u>	Shall open on the first Saturday in November and extend <u>continue</u> for 9 <u>nine</u> consecutive days.
<u>(5)(C)</u>	<u>Bishop</u> Period 5	0	0	<u>0</u>	<u>0</u>	Shall open on the first Saturday in December and continue for 9 <u>nine</u> consecutive days.
(4) <u>(6)(A)</u>	Independence Period 2	1	1	<u>0</u>	<u>0</u>	Shall open on the first Saturday in October and extend <u>continue</u> for 9 <u>nine</u> consecutive days.
<u>(6)(B)</u>	<u>Independence</u> Period 3	0	1	<u>0</u>	<u>0</u>	Shall open on the third Saturday in October and extend <u>continue</u> for 9 <u>nine</u> consecutive days.
<u>(6)(C)</u>	<u>Independence</u> Period 4	0	0	<u>0</u>	<u>0</u>	Shall open on the first Saturday in November and extend <u>continue</u> for 9 <u>nine</u> consecutive days.
<u>(6)(D)</u>	<u>Independence</u> Period 5	0	0	<u>0</u>	<u>0</u>	Shall open on the first Saturday in December and continue for 9 <u>nine</u> consecutive days.

§	Hunt	1. Bull Tags	2. Antlerless Tags	3. Either-Sex Tags	4. Spike Tags	5. Season
(5) (7)(A)	Lone Pine Period 2	1	0	<u>0</u>	<u>0</u>	Shall open on the first Saturday in Period 2 October and extend <u>continue</u> for 9 <u>nine</u> consecutive days.
(7)(B)	<u>Lone Pine</u> Period 3	0	0	<u>0</u>	<u>0</u>	Shall open on the first Saturday in Period 2 October and extend <u>continue</u> for 9 <u>nine</u> consecutive days.
(7)(C)	<u>Lone Pine</u> Period 4	0	0	<u>0</u>	<u>0</u>	Shall open on the first Saturday in November and extend <u>continue</u> for 9 <u>nine</u> consecutive days.
(7)(D)	<u>Lone Pine</u> Period 5	0	0	<u>0</u>	<u>0</u>	Shall open on the first Saturday in December and continue for 9 <u>nine</u> consecutive days.
(6) (8)(A)	Tinehama <u>Tinemaha</u> Period 2	0	0	<u>0</u>	<u>0</u>	Shall open on the first Saturday in October and extend <u>continue</u> for 9 <u>nine</u> consecutive days.
(8)(B)	<u>Tinemaha</u> Period 3	0	0	<u>0</u>	<u>0</u>	Shall open on the third Saturday in October and extend <u>continue</u> for 9 <u>nine</u> consecutive days.
(8)(C)	<u>Tinemaha</u> Period 4	0	0	<u>0</u>	<u>0</u>	Shall open on the first Saturday in November and extend <u>continue</u> for 9 <u>nine</u> consecutive days.
(8)(D)	<u>Tinemaha</u> Period 5	0	0	<u>0</u>	<u>0</u>	Shall open on the first Saturday in December and continue for 9 <u>nine</u> consecutive days.

§	Hunt	1. Bull Tags	2. Antlerless Tags	3. Either-Sex Tags	4. Spike Tags	5. Season
(7) (9)(A)	West Tinehama <u>Tinemaha</u> Period 1	1	0	<u>0</u>	<u>0</u>	Shall open on the second Saturday in September and extend <u>continue</u> for 16 consecutive days.
(9)(B)	<u>West Tinemaha</u> Period 2	0	0	<u>0</u>	<u>0</u>	Shall open on the first Saturday in October and extend <u>continue</u> for 9 <u>nine</u> consecutive days.
(9)(C)	<u>West Tinemaha</u> Period 3	0	0	<u>0</u>	<u>0</u>	Shall open on the third Saturday in October and extend <u>continue</u> for 9 <u>nine</u> consecutive days.
(9)(D)	<u>West Tinemaha</u> Period 4	0	0	<u>0</u>	<u>0</u>	Shall open on the first Saturday in November and extend <u>continue</u> for 9 <u>nine</u> consecutive days.
(9)(E)	<u>West Tinemaha</u> Period 5	0	0	<u>0</u>	<u>0</u>	Shall open on the first Saturday in December and extend <u>continue</u> for 9 <u>nine</u> consecutive days.
(8) (10)(A)	Tinehama <u>Tinemaha</u> Mountain Period 1	0	<u>0</u>	<u>0</u>	<u>0</u>	Shall open on the second Saturday in September and extend <u>continue</u> for 16 consecutive days.
(10)(B)	<u>Tinemaha</u> Mountain Period 2	0	<u>0</u>	<u>0</u>	<u>0</u>	Shall open on the first Saturday in October and extend <u>continue</u> for 9 <u>nine</u> consecutive days.

§	Hunt	1. Bull Tags	2. Antlerless Tags	3. Either-Sex Tags	4. Spike Tags	5. Season
(10)(C)	<u>Tinemaha Mountain</u> Period 3	0	<u>0</u>	<u>0</u>	<u>0</u>	Shall open on the third Saturday in October and extend <u>continue</u> for 9 <u>nine</u> consecutive days <u>days</u> .
(10)(D)	<u>Tinemaha Mountain</u> Period 4	0	<u>0</u>	<u>0</u>	<u>0</u>	Shall open on the first Saturday in November and extend <u>continue</u> for 9 <u>nine</u> consecutive days.
(10)(E)	<u>Tinemaha Mountain</u> Period 5	0	<u>0</u>	<u>0</u>	<u>0</u>	Shall open on the first Saturday in December and continue for 9 <u>nine</u> consecutive days.
(9) (11)(A)	Whitney Period 2	1	0	<u>0</u>	<u>0</u>	Shall open on the first Saturday in October and extend <u>continue</u> for 9 <u>nine</u> consecutive days.
(11)(B)	<u>Whitney</u> Period 3	0	1	<u>0</u>	<u>0</u>	Shall open on the third Saturday in October and extend <u>continue</u> for 9 <u>nine</u> consecutive days <u>days</u> .
(11)(C)	<u>Whitney</u> Period 4	0	0	<u>0</u>	<u>0</u>	Shall open on the first Saturday in November and extend <u>continue</u> for 9 <u>nine</u> consecutive days.
(11)(D)	<u>Whitney</u> Period 5	0	0	<u>0</u>	<u>0</u>	Shall open on the first Saturday in December and continue for 9 <u>nine</u> consecutive days.

§	Hunt	1. Bull Tags	2. Antlerless Tags	3. Either-Sex Tags	4. Spike Tags	5. Season
(10) (12)(A)	Goodale Period 1	1	0	<u>0</u>	<u>0</u>	Shall open on the second Saturday in September and extend <u>continue</u> for 16 consecutive days.
(12)(B)	<u>Goodale</u> Period 2	0	1	<u>0</u>	<u>0</u>	Shall open on the first Saturday in October and extend <u>continue</u> for 9 <u>nine</u> consecutive days.
(12)(C)	<u>Goodale</u> Period 3	0	1	<u>0</u>	<u>0</u>	Shall open on the third Saturday in October and extend <u>continue</u> for 9 <u>nine</u> consecutive days.
(12)(D)	<u>Goodale</u> Period 4	0	0	<u>0</u>	<u>0</u>	Shall open on the first Saturday in November and extend <u>continue</u> for 9 <u>nine</u> consecutive days.
(12)(E)	<u>Goodale</u> Period 5	0	0	<u>0</u>	<u>0</u>	Shall open on the first Saturday in December and continue for 9 <u>nine</u> consecutive days.
(11) (13)(A)	Grizzly Island Period 1	0	2	<u>0</u>	0	Shall open on the second Tuesday after the first Saturday in August and continue for 4 four consecutive days.
(13)(B)	<u>Grizzly Island</u> Period 2	0	0	<u>0</u>	2	Shall open on the first Thursday following the opening of period one <u>Period 1</u> and continue for 4 four consecutive days.

§	Hunt	1. Bull Tags	2. Antlerless Tags	3. Either-Sex Tags	4. Spike Tags	5. Season
<u>(13)</u> (C)	<u>Grizzly Island</u> Period 3	0	0	<u>0</u>	0	Shall open on the first Tuesday following the opening of period two Period 2 and continue for 4 <u>four</u> consecutive days <u>days</u> .
<u>(13)</u> (D)	<u>Grizzly Island</u> Period 4	0	0	<u>0</u>	0	Shall open on the first Thursday following the opening of period three Period 3 and continue for 4 <u>four</u> consecutive days.
<u>(13)</u> (E)	<u>Grizzly Island</u> Period 5	0	0	<u>0</u>	0	Shall open on the first Tuesday following the opening of period four Period 4 and continue for 4 <u>four</u> consecutive days <u>days</u> .
<u>(13)</u> (F)	<u>Grizzly Island</u> Period 6	0	0	<u>0</u>	0	Shall open on the first Thursday following the opening of period five Period 5 and continue for 4 <u>four</u> consecutive days.
<u>(13)</u> (G)	<u>Grizzly Island</u> Period 7	0	0	<u>0</u>	0	Shall open on the first Tuesday following the opening of period six Period 6 and continue for 4 <u>four</u> consecutive days <u>days</u> .
<u>(13)</u> (H)	<u>Grizzly Island</u> Period 8	0	0	<u>0</u>	6	Shall open on the first Thursday following the opening of period seven Period 7 and continue for 4 <u>four</u> consecutive days <u>days</u> .

§	Hunt	1. Bull Tags	2. Antlerless Tags	3. Either-Sex Tags	4. Spike Tags	5. Season
<u>(13)</u> (I)	<u>Grizzly Island</u> Period 9	0	4	<u>0</u>	0	Shall open on the first Tuesday following the opening of period eight <u>Period 8</u> and continue for 4 <u>four</u> consecutive days.
<u>(13)</u> (J)	<u>Grizzly Island</u> Period 10	3	0	<u>0</u>	0	Shall open on the first Thursday following the opening of period nine <u>Period 9</u> and continue for 4 <u>four</u> consecutive days.
<u>(13)</u> (K)	<u>Grizzly Island</u> Period 11	0	4	<u>0</u>	0	Shall open on the first Tuesday following the opening of period ten <u>Period 10</u> and continue for 4 <u>four</u> consecutive days.
<u>(13)</u> (L)	<u>Grizzly Island</u> Period 12	3	<u>0</u>	<u>0</u>	0	Shall open on the first Thursday following the opening of period eleven <u>Period 11</u> and continue for 4 <u>four</u> consecutive days.
<u>(13)</u> (M)	<u>Grizzly Island</u> Period 13	0	4	<u>0</u>	0	Shall open on the first Tuesday following the opening of period twelve <u>Period 12</u> and continue for 4 <u>four</u> consecutive days.
(12) <u>(14)</u> (A)	Fort Hunter Liggett-General Public Period 1	0	0	<u>0</u>	<u>0</u>	Shall open on the first Thursday in General Public November and continue for 9 <u>nine</u> consecutive days.

§	Hunt	1. Bull Tags	2. Antlerless Tags	3. Either-Sex Tags	4. Spike Tags	5. Season
(14) (B)	<u>Fort Hunter Liggett General Public Period 2</u>	0	6	<u>0</u>	<u>0</u>	Shall open <u>on</u> November 25 and continue for 9 <u>nine</u> consecutive days.
(14) (C)	<u>Fort Hunter Liggett General Public Period 3</u>	8	0	<u>0</u>	<u>0</u>	Shall open on the fourth Tuesday in December and continue for 13 consecutive days.
(13) <u>(15)</u> (A)	East Park Reservoir	2	2	<u>0</u>	<u>0</u>	Shall open <u>on</u> the first Saturday in September and continue for 27 consecutive days.
(14) <u>(16)</u> (A)	San Luis Reservoir	0	0	5	<u>0</u>	Shall open on the first Saturday in October and continue for 23 consecutive days.
(15) <u>(17)</u> (A)	Bear Valley	2	1	<u>0</u>	<u>0</u>	Shall open on the second Saturday in October and continue for 9 <u>nine</u> consecutive days.
(16) <u>(18)</u> (A)	Lake Pillsbury Period 1	<u>0</u>	4	<u>0</u>	<u>0</u>	Shall open on the Wednesday preceding the second Saturday in September and continue for 10 <u>ten</u> consecutive days.
(18) (B)	<u>Lake Pillsbury Period 2</u>	2	<u>0</u>	<u>0</u>	<u>0</u>	Shall open <u>on the</u> Monday following the fourth Saturday in September and continue for 10 <u>ten</u> consecutive days.
(17) <u>(19)</u> (A)	Santa Clara	0	0	<u>0</u>	<u>0</u>	Shall open on the second Saturday in October and continue for 16 consecutive days.

§	Hunt	1. Bull Tags	2. Antlerless Tags	3. Either-Sex Tags	4. Spike Tags	5. Season
(18) (20)(A)	Alameda	0	0	<u>0</u>	<u>0</u>	Shall open on the second Saturday in October and continue for 16 consecutive days.

(v) Department Administered Apprentice Hunts

§	Hunt	1. Bull Tags	2. Antlerless Tags	3. Either-Sex Tags	4. Spike Tags	5. Season
(1)(A)	Marble Mountain General Methods Roosevelt Elk Apprentice	<u>0</u>	<u>0</u>	4	<u>0</u>	Shall open on the Wednesday preceding the second Saturday in September and continue for 12 consecutive days.
(2)(A)	<u>Northeastern California</u> General Methods Rocky Mountain Elk Apprentice	<u>0</u>	<u>0</u>	2	<u>0</u>	Shall open on the Wednesday preceding the third Saturday in September and continue for 12 consecutive days.
(3)(A)	Cache Creek General Methods Tule Elk Apprentice	1	0	<u>0</u>	<u>0</u>	Shall open on the second Saturday in October and continue for 16 consecutive days.
(4)(A)	La Panza General Methods Tule Elk Apprentice	0	1	<u>0</u>	<u>0</u>	Shall open on the second Saturday in October and extend <u>continue</u> for 23 consecutive days.
(5)(A)	Bishop General Methods Tule Elk Apprentice Period 2	0	0	<u>0</u>	<u>0</u>	Shall open on the first Saturday in October and extend <u>continue</u> for 9 <u>nine</u> consecutive days.

§	Hunt	1. Bull Tags	2. Antlerless Tags	3. Either-Sex Tags	4. Spike Tags	5. Season
(6)(A)	Grizzly Island General Methods Tule Elk Apprentice Period 1	<u>0</u>	2	<u>0</u>	0	Shall open on the second Tuesday after the first Saturday in August and continue for 4 <u>four</u> consecutive <u>days</u> <u>days</u> .
(6)(B)	<u>Grizzly Island</u> <u>General Methods</u> <u>Tule Elk Apprentice</u> Period 2	<u>0</u>	0	<u>0</u>	<u>0</u>	Shall open on the first Thursday following the opening of period one <u>Period 1</u> and continue for 4 <u>four</u> consecutive days.
(6)(C)	<u>Grizzly Island</u> <u>General Methods</u> <u>Tule Elk Apprentice</u> Period 3	<u>0</u>	0	<u>0</u>	0	Shall open on the first Tuesday following the opening of period two <u>Period 2</u> and continue for 4 <u>four</u> consecutive days.
(6)(D)	<u>Grizzly Island</u> <u>General Methods</u> <u>Tule Elk Apprentice</u> Period 4	<u>0</u>	0	<u>0</u>	0	Shall open on the first Thursday following the opening of period three <u>Period 3</u> and continue for 4 <u>four</u> consecutive days.
(7)(A)	Fort Hunter Liggett General Public General Methods Apprentice	1	1	<u>0</u>	<u>0</u>	Shall open on the fourth Tuesday in December and continue for 13 consecutive days.

(w) Department Administered Archery Only Hunts

§	Hunt	1. Bull Tags	2. Antlerless Tags	3. Either-Sex Tags	4. Spike Tags	5. Season
(1)(A)	Northeastern California Archery Only	0	0	10	<u>0</u>	Shall open on the Wednesday preceding the first Saturday in September and continue for 12 consecutive days.

§	Hunt	1. Bull Tags	2. Antlerless Tags	3. Either-Sex Tags	4. Spike Tags	5. Season
(2)(A)	Owens Valley Multiple Zone Archery Only	3	0	<u>0</u>	<u>0</u>	Shall open on the second Saturday in August and extend <u>continue</u> for 9 <u>nine</u> consecutive days.
(3)(A)	Lone Pine Archery Only Period 1	0	1	<u>0</u>	<u>0</u>	Shall open on the second Saturday in September and extend <u>continue</u> for 16 consecutive days.
(4)(A)	Tinehama Tinemaha Archery Only Period 1	0	0	<u>0</u>	<u>0</u>	Shall open on the second Saturday in September and extend <u>extend</u> for 16 consecutive days.
(5)(A)	Whitney Archery Only Period 1	0	0	<u>0</u>	<u>0</u>	Shall open on the second Saturday in September and extend <u>continue</u> for 16 consecutive days.
(6)(A)	Fort Hunter Liggett General Public Archery Only Either Sex	<u>0</u>	<u>0</u>	6	<u>0</u>	Shall open on the last Saturday in July and continue for 9 <u>nine</u> consecutive days.
<u>(6)(B)</u>	Fort Hunter Liggett General Public Archery Only Antlerless	<u>0</u>	8	<u>0</u>	<u>0</u>	Shall open on the First <u>first</u> Saturday in November and continue for 9 <u>nine</u> consecutive days.

(x) Department Administered Muzzleloader Only Tule Elk Hunts

§	Hunt	1. Bull Tags	2. Antlerless Tags	3. Either-Sex Tags	4. Spike Tags	5. Season
(1)(A)	Bishop Muzzleloader Only Period 1	0	0	<u>0</u>	<u>0</u>	Shall open on the second Saturday in September and extend <u>continue</u> for 16 consecutive days.
(2)(A)	Independence Muzzleloader Muzzleloader Only Period 1	1	0	<u>0</u>	<u>0</u>	Shall open on the second Saturday in September and extend <u>continue</u> for 16 consecutive days.

§	Hunt	1. Bull Tags	2. Antlerless Tags	3. Either-Sex Tags	4. Spike Tags	5. Season
(3)(A)	Goodale Muzzleloader Only Period 1	0	0	<u>0</u>	<u>0</u>	Shall open on the second Saturday in September and extend <u>continue</u> for 16 consecutive days.
(4)(A)	Fort Hunter Liggett General Public Muzzleloader Only	0	0	<u>0</u>	<u>0</u>	Shall open on the fourth Saturday in November and continue for 9 <u>nine</u> consecutive days.

(y) Department Administered Muzzleloader/Archery Only Hunts

§	Hunt	1. Bull Tags	2. Antlerless Tags	3. Either-Sex Tags	4. Spike Tags	5. Season
(1)(A)	Marble Mountain Muzzleloader/ Archery Roosevelt Elk	<u>0</u>	<u>0</u>	10	<u>0</u>	Shall open on the last Saturday in October and extend <u>continue</u> for 9 <u>nine</u> consecutive days.

(z) ~~Fund Raising~~ Fundraising Elk tags

§	Hunt	1. Bull Tags	2. Antlerless Tags	3. Either-Sex Tags	4. Spike Tags	5. Season
(1)(A)	Multi-zone Fund-Raising Fundraising Tags	1	<u>0</u>	<u>0</u>	<u>0</u>	Siskiyou and Marble Mountains Roosevelt Elk Season shall open on the Wednesday preceding the first Saturday in September and continue for 19 consecutive days. Northwestern Roosevelt Elk Season shall open on the last Wednesday in August and continue for 30 consecutive days. Northeastern Rocky Mountain Elk Season shall open on the Wednesday preceding the last Saturday in August and continue for 33 consecutive days. La Panza Tule Elk Season shall open on the first Saturday in October and extend <u>continue</u> for 65 consecutive days.
(2) (A)	Grizzly Island Fund-Raising Fundraising Tags	1	<u>0</u>	<u>0</u>	<u>0</u>	Shall open on the first Saturday in August and continue for 30 consecutive days.
(3) <u>(4)</u> (A)	Owens Valley Fund-Raising Fundraising Tags	1	<u>0</u>	<u>0</u>	<u>0</u>	Shall open on the last Saturday in July and extend <u>continue</u> for 30 consecutive day <u>days</u> .

(aa) Military Only Tule Elk Hunts

§	Hunt	1. Bull Tags	2. Antlerless Tags	3. Either-Sex Tags	4. Spike Tags	5. Season
(1)(A)	Fort Hunter Liggett Military Only General Methods Early Season	0	0	<u>0</u>	<u>0</u>	The early season shall <u>Shall</u> open on the second Monday in August and continue for 5 <u>five</u> consecutive days and reopen on the fourth Monday in August and continue for 5 <u>five</u> consecutive days <u>days</u> .
(1)(B)	<u>Fort Hunter Liggett Military Only General Methods Period 1</u>	<u>0</u>	0	<u>0</u>	<u>0</u>	Shall open on the first Thursday in November and continue for 9 <u>nine</u> consecutive days.
(1)(C)	<u>Fort Hunter Liggett Military Only General Methods Period 2</u>	<u>0</u>	0	<u>0</u>	<u>0</u>	Shall open <u>on</u> November 22 and continue for 9 <u>nine</u> consecutive days.
(1)(D)	<u>Fort Hunter Liggett Military Only General Methods Period 3</u>	0	<u>0</u>	<u>0</u>	<u>0</u>	Shall open on the third Saturday in December and continue for 12 consecutive days.
(2)(A)	Fort Hunter Liggett Military Only General Methods Apprentice	0	0	<u>0</u>	<u>0</u>	Shall open on the third Saturday in December and continue for 12 consecutive days.
(3)(A)	Fort Hunter Liggett Military Only Archery Only Either Sex	<u>0</u>	<u>0</u>	0	<u>0</u>	Shall open on the last Saturday in July and continue for 9 <u>nine</u> consecutive days.
(4)(A)	Fort Hunter Liggett Military Only Muzzleloader Only	0	<u>0</u>	<u>0</u>	<u>0</u>	Shall open on the third Saturday in November and continue for 9 <u>nine</u> consecutive days.

NOTE: Authority cited: Sections 200, 203, 203.1, 265, 332 and 1050, Fish and Game Code.

Reference: Sections 332, 1050, 1570, 1571, 1572, 1573 and 1574, Fish and Game Code.

Section 364.1, Title 14, CCR, is amended to read:

§ 364.1. Department Administered Shared Habitat Alliance for Recreational Enhancement (SHARE) Elk Hunts

(a) Season: The overall season shall open on the August 15 and continue through January 31. Individual SHARE properties will be assigned seasons corresponding with management goals.

(b) Bag and Possession Limit: Each elk tag is valid only for one elk per season and only in the SHARE hunt area drawn, and persons shall only be eligible for one elk tag per season through ~~sections 364 or~~ 364.1.

(c) Individual property boundaries will be identified in the SHARE application package.

(d) Method of Take: Only methods for taking elk as defined in Sections 353 and 354 may be used.

(e) Tagholder Responsibilities: See subsection 364(n).

(f) The use of dogs to take or attempt to take elk is prohibited.

(g) Applicants shall apply for a SHARE Access Permit, and pay a nonrefundable application fee as specified in Section 602, through the department's Automated License Data System terminals at any department license agent, department license sales office, or online.

(h) Upon receipt of winner notification, successful applicants shall submit the appropriate tag fee as specified in Section 702 through any department license sales office or online through the department's Automated License Data System.

(i) Department Administered SHARE Roosevelt Elk Hunts

§	(A) Hunts	1. Bull Tags	2. Antlerless Tags	3. Either-Sex Tags	4. Spike Tags	(B) Area
(1)	Siskiyou	2	2	<u>0</u>	<u>0</u>	(B) Area: The tag shall be valid in the area described in subsection 364(a)(1)(A).
(2)	Northwestern	34	34	<u>0</u>	<u>0</u>	(B) Area: The tag shall be valid in the area described in subsection 364(a)(2)(A).
(3)	Marble Mountain	1	2	<u>0</u>	<u>0</u>	(B) Area: The tag shall be valid in the area described in subsection 364(a)(3)(A).

~~(j)~~ (i) Department Administered General Methods SHARE Rocky Mountain Elk Hunts

§	(A) Hunts	1. Bull Tags	2. Antlerless Tags	3. Either-Sex Tags	4. Spike Tags	(B) Area
(1)	Northwest California <u>Northeastern</u>	2	0	2	<u>0</u>	(B) Area: The tag shall be valid in the area described in subsection 364(b)(1)(A).

§	(A) Hunts	1. Bull Tags	2. Antlerless Tags	3. Either-Sex Tags	4. Spike Tags	(B) Area
<u>(2)</u>	<u>Tehachapi</u>	<u>20</u>	<u>15</u>	<u>0</u>	<u>0</u>	<u>The tag shall be valid in the area described in subsection 364(b)(2)(A).</u>

(k) Department Administered SHARE Roosevelt/Tule Elk Hunts

§	(A) Hunts	1. Bull Tags	2. Antlerless Tags	3. Either-Sex Tags	4. Spike Tags	(B) Area
(1)	Mendocino	2	4	<u>0</u>	<u>0</u>	(B) Area: The tag shall be valid in the area described in subsection 364(c)(1)(A).

~~(k)~~ (l) Department Administered SHARE Tule Elk Hunts

§	(A) Hunts	1. Bull Tags	2. Antlerless Tags	3. Either-Sex Tags	4. Spike Tags	(B) Area
(1)	Cache Creek	2	1	<u>0</u>	<u>0</u>	(B) Area: The tag shall be valid in the area described in subsection 364(d)(1)(A).
(2)	La Panza	5	10	<u>0</u>	<u>0</u>	(B) Area: The tag shall be valid in the area described in subsection 364(d)(2)(A).
<u>(3)</u>	<u>Central Coast</u>	<u>0</u>	<u>0</u>	<u>0</u>	<u>0</u>	<u>The tag shall be valid in the area described in subsection 364(d)(3)(A).</u>
<u>(4)</u>	<u>Gabilan</u>	<u>0</u>	<u>0</u>	<u>0</u>	<u>0</u>	<u>The tag shall be valid in the area described in subsection 364(d)(4)(A).</u>
(3) <u>(5)</u>	Bishop	0	0	<u>0</u>	<u>0</u>	(B) Area: The tag shall be valid in the area described in subsection 364(d) (3) <u>(5)</u> (A).
(4) <u>(6)</u>	Independence	0	0	<u>0</u>	<u>0</u>	(B) Area: The tag shall be valid in the area described in subsection 364(d) (4) <u>(6)</u> (A).
(5) <u>(7)</u>	Lone Pine Period 2	0	0	<u>0</u>	<u>0</u>	(B) Area: The tag shall be valid in the area described in subsection 364(d) (5) <u>(7)</u> (A).
(6) <u>(8)</u>	Tinehama <u>Tinemaha</u>	0	0	<u>0</u>	<u>0</u>	(B) Area: The tag shall be valid in the area described in subsection 364(d) (6) <u>(8)</u> (A).

§	(A) Hunts	1. Bull Tags	2. Antlerless Tags	3. Either-Sex Tags	4. Spike Tags	(B) Area
(7) <u>(9)</u>	West Tinehama <u>Tinemaha</u>	0	0	<u>0</u>	<u>0</u>	(B) Area: The tag shall be valid in the area described in subsection 364(d) (7) <u>(9)</u> (A).
(8) <u>(10)</u>	Tinehama <u>Tinemaha</u> Mountain	0	<u>0</u>	<u>0</u>	<u>0</u>	(B) Area: The tag shall be valid in the area described in subsection 364(d) (8) <u>(10)</u> (A).
(9) <u>(11)</u>	Whitney	0	0	<u>0</u>	<u>0</u>	(B) Area: The tag shall be valid in the area described in subsection 364(d) (9) <u>(11)</u> (A).
(10) <u>(12)</u>	Goodale	0	0	<u>0</u>	<u>0</u>	(B) Area: The tag shall be valid in the area described in subsection 364(d) (10) <u>(12)</u> (A).
(11) <u>(13)</u>	Grizzly Island	0	0	<u>0</u>	0	(B) Area: The tag shall be valid in the area described in subsection 364(d) (11) <u>(13)</u> (A).
(12) <u>(14)</u>	Fort Hunter Liggett	0	0	<u>0</u>	<u>0</u>	(B) Area: The tag shall be valid in the area described in subsection 364(d) (12) <u>(14)</u> (A).
(13) <u>(15)</u>	East Park Reservoir	1	1	<u>0</u>	<u>0</u>	(B) Area: The tag shall be valid in the area described in subsection 364(d) (13) <u>(15)</u> (A).
(14) <u>(16)</u>	San Luis Reservoir	2	3	<u>0</u>	<u>0</u>	(B) Area: The tag shall be valid in the area described in subsection 364(d) (14) <u>(16)</u> (A).
(15) <u>(17)</u>	Bear Valley	2	1	<u>0</u>	<u>0</u>	(B) Area: The tag shall be valid in the area described in subsection 364(d) (15) <u>(17)</u> (A).
(16) <u>(18)</u>	Lake Pillsbury	0	0	<u>0</u>	<u>0</u>	(B) Area: The tag shall be valid in the area described in subsection 364(d) (16) <u>(18)</u> (A).
(17) <u>(19)</u>	Santa Clara	0	<u>0</u>	<u>0</u>	<u>0</u>	(B) Area: The tag shall be valid in the area described in subsection 364(d) (17) <u>(19)</u> (A).

§	(A) Hunts	1. Bull Tags	2. Antlerless Tags	3. Either-Sex Tags	4. Spike Tags	(B) Area
(18) (20)	Alameda	0	<u>0</u>	<u>0</u>	<u>0</u>	(B) Area: The tag shall be valid in the area described in subsection 364(d) (18) (20)(A).

NOTE: Authority cited: Sections 332 and 1050, Fish and Game Code.

Reference: Sections 332, 1050 and 1574, Fish and Game Code.

**ECONOMIC AND FISCAL IMPACT STATEMENT
(REGULATIONS AND ORDERS)**

STD. 399 (Rev. 10/2019)

ECONOMIC IMPACT STATEMENT

DEPARTMENT NAME Fish and Game Commission	CONTACT PERSON David Thesell	EMAIL ADDRESS fgc@fgc.ca.gov	TELEPHONE NUMBER 916 902-9291
DESCRIPTIVE TITLE FROM NOTICE REGISTER OR FORM 400 Amend Section 364, Title 14, California Code of Regulations, Re: Elk Hunting			NOTICE FILE NUMBER Z

A. ESTIMATED PRIVATE SECTOR COST IMPACTS *Include calculations and assumptions in the rulemaking record.*

1. Check the appropriate box(es) below to indicate whether this regulation:

- | | |
|--|---|
| <input type="checkbox"/> a. Impacts business and/or employees | <input type="checkbox"/> e. Imposes reporting requirements |
| <input type="checkbox"/> b. Impacts small businesses | <input type="checkbox"/> f. Imposes prescriptive instead of performance |
| <input type="checkbox"/> c. Impacts jobs or occupations | <input type="checkbox"/> g. Impacts individuals |
| <input type="checkbox"/> d. Impacts California competitiveness | <input checked="" type="checkbox"/> h. None of the above (Explain below): |

No new private sector compliance costs necessarily incurred***If any box in Items 1 a through g is checked, complete this Economic Impact Statement.******If box in Item 1.h. is checked, complete the Fiscal Impact Statement as appropriate.***2. The _____ estimates that the economic impact of this regulation (which includes the fiscal impact) is:
(Agency/Department)

- ☐ Below \$10 million
- ☐ Between \$10 and \$25 million
- ☐ Between \$25 and \$50 million
- ☐ Over \$50 million *[If the economic impact is over \$50 million, agencies are required to submit a [Standardized Regulatory Impact Assessment](#) as specified in Government Code Section 11346.3(c)]*

3. Enter the total number of businesses impacted: _____

Describe the types of businesses (Include nonprofits): _____

Enter the number or percentage of total
businesses impacted that are small businesses: _____

4. Enter the number of businesses that will be created: _____ eliminated: _____

Explain: _____

5. Indicate the geographic extent of impacts: ☐ Statewide
☐ Local or regional (List areas): _____

6. Enter the number of jobs created: _____ and eliminated: _____

Describe the types of jobs or occupations impacted: _____

7. Will the regulation affect the ability of California businesses to compete with
other states by making it more costly to produce goods or services here? ☐ YES ☐ NO

If YES, explain briefly: _____

**ECONOMIC AND FISCAL IMPACT STATEMENT
(REGULATIONS AND ORDERS)**

STD. 399 (Rev. 10/2019)

ECONOMIC IMPACT STATEMENT (CONTINUED)**B. ESTIMATED COSTS** *Include calculations and assumptions in the rulemaking record.*

1. What are the total statewide dollar costs that businesses and individuals may incur to comply with this regulation over its lifetime? \$ _____

a. Initial costs for a small business: \$ _____ Annual ongoing costs: \$ _____ Years: _____

b. Initial costs for a typical business: \$ _____ Annual ongoing costs: \$ _____ Years: _____

c. Initial costs for an individual: \$ _____ Annual ongoing costs: \$ _____ Years: _____

d. Describe other economic costs that may occur: _____

2. If multiple industries are impacted, enter the share of total costs for each industry: _____

3. If the regulation imposes reporting requirements, enter the annual costs a typical business may incur to comply with these requirements.
Include the dollar costs to do programming, record keeping, reporting, and other paperwork, whether or not the paperwork must be submitted. \$ _____4. Will this regulation directly impact housing costs? ☐ YES ☐ NO

If YES, enter the annual dollar cost per housing unit: \$ _____

Number of units: _____

5. Are there comparable Federal regulations? ☐ YES ☐ NO

Explain the need for State regulation given the existence or absence of Federal regulations: _____

Enter any additional costs to businesses and/or individuals that may be due to State - Federal differences: \$ _____

C. ESTIMATED BENEFITS *Estimation of the dollar value of benefits is not specifically required by rulemaking law, but encouraged.*

1. Briefly summarize the benefits of the regulation, which may include among others, the health and welfare of California residents, worker safety and the State's environment: _____

2. Are the benefits the result of: ☐ specific statutory requirements, or ☐ goals developed by the agency based on broad statutory authority?

Explain: _____

3. What are the total statewide benefits from this regulation over its lifetime? \$ _____

4. Briefly describe any expansion of businesses currently doing business within the State of California that would result from this regulation: _____

D. ALTERNATIVES TO THE REGULATION *Include calculations and assumptions in the rulemaking record. Estimation of the dollar value of benefits is not specifically required by rulemaking law, but encouraged.*

1. List alternatives considered and describe them below. If no alternatives were considered, explain why not: _____

**ECONOMIC AND FISCAL IMPACT STATEMENT
(REGULATIONS AND ORDERS)**

STD. 399 (Rev. 10/2019)

ECONOMIC IMPACT STATEMENT (CONTINUED)

2. Summarize the total statewide costs and benefits from this regulation and each alternative considered:

Regulation: Benefit: \$ _____ Cost: \$ _____

Alternative 1: Benefit: \$ _____ Cost: \$ _____

Alternative 2: Benefit: \$ _____ Cost: \$ _____

3. Briefly discuss any quantification issues that are relevant to a comparison of estimated costs and benefits for this regulation or alternatives: _____

4. Rulemaking law requires agencies to consider performance standards as an alternative, if a regulation mandates the use of specific technologies or equipment, or prescribes specific actions or procedures. Were performance standards considered to lower compliance costs? ☐ YES ☐ NOExplain: _____
_____**E. MAJOR REGULATIONS** *Include calculations and assumptions in the rulemaking record.****California Environmental Protection Agency (Cal/EPA) boards, offices and departments are required to submit the following (per Health and Safety Code section 57005). Otherwise, skip to E4.***1. Will the estimated costs of this regulation to California business enterprises **exceed \$10 million**? ☐ YES ☐ NO***If YES, complete E2. and E3******If NO, skip to E4***

2. Briefly describe each alternative, or combination of alternatives, for which a cost-effectiveness analysis was performed:

Alternative 1: _____

Alternative 2: _____

(Attach additional pages for other alternatives)

3. For the regulation, and each alternative just described, enter the estimated total cost and overall cost-effectiveness ratio:

Regulation: Total Cost \$ _____ Cost-effectiveness ratio: \$ _____

Alternative 1: Total Cost \$ _____ Cost-effectiveness ratio: \$ _____

Alternative 2: Total Cost \$ _____ Cost-effectiveness ratio: \$ _____

4. Will the regulation subject to OAL review have an estimated economic impact to business enterprises and individuals located in or doing business in California exceeding \$50 million in any 12-month period between the date the major regulation is estimated to be filed with the Secretary of State through 12 months after the major regulation is estimated to be fully implemented?

☐ YES ☐ NO*If YES, agencies are required to submit a [Standardized Regulatory Impact Assessment \(SRIA\)](#) as specified in Government Code Section 11346.3(c) and to include the SRIA in the Initial Statement of Reasons.*

5. Briefly describe the following:

The increase or decrease of investment in the State: _____

The incentive for innovation in products, materials or processes: _____

The benefits of the regulations, including, but not limited to, benefits to the health, safety, and welfare of California residents, worker safety, and the state's environment and quality of life, among any other benefits identified by the agency: _____

**ECONOMIC AND FISCAL IMPACT STATEMENT
(REGULATIONS AND ORDERS)**

STD. 399 (Rev. 10/2019)

DRAFT DOCUMENT**FISCAL IMPACT STATEMENT****A. FISCAL EFFECT ON LOCAL GOVERNMENT** *Indicate appropriate boxes 1 through 6 and attach calculations and assumptions of fiscal impact for the current year and two subsequent Fiscal Years.*

- ☐ 1. Additional expenditures in the current State Fiscal Year which are reimbursable by the State. (Approximate)
(Pursuant to Section 6 of Article XIII B of the California Constitution and Sections 17500 et seq. of the Government Code).

\$ _____

- ☐ a. Funding provided in _____
Budget Act of _____ or Chapter _____, Statutes of _____

- ☐ b. Funding will be requested in the Governor's Budget Act of _____
Fiscal Year: _____

- ☐ 2. Additional expenditures in the current State Fiscal Year which are NOT reimbursable by the State. (Approximate)
(Pursuant to Section 6 of Article XIII B of the California Constitution and Sections 17500 et seq. of the Government Code).

\$ _____

Check reason(s) this regulation is not reimbursable and provide the appropriate information:

- ☐ a. Implements the Federal mandate contained in _____
- ☐ b. Implements the court mandate set forth by the _____ Court.

Case of: _____ vs. _____

- ☐ c. Implements a mandate of the people of this State expressed in their approval of Proposition No. _____

Date of Election: _____

- ☐ d. Issued only in response to a specific request from affected local entity(s).

Local entity(s) affected: _____

- ☐ e. Will be fully financed from the fees, revenue, etc. from: _____

Authorized by Section: _____ of the _____ Code;

- ☐ f. Provides for savings to each affected unit of local government which will, at a minimum, offset any additional costs to each;

- ☐ g. Creates, eliminates, or changes the penalty for a new crime or infraction contained in _____

- ☐ 3. Annual Savings. (approximate)

\$ _____

- ☐ 4. No additional costs or savings. This regulation makes only technical, non-substantive or clarifying changes to current law regulations.

- ☒ 5. No fiscal impact exists. This regulation does not affect any local entity or program.

- ☐ 6. Other. Explain _____

**ECONOMIC AND FISCAL IMPACT STATEMENT
(REGULATIONS AND ORDERS)**

STD. 399 (Rev. 10/2019)

FISCAL IMPACT STATEMENT (CONTINUED)**B. FISCAL EFFECT ON STATE GOVERNMENT** *Indicate appropriate boxes 1 through 4 and attach calculations and assumptions of fiscal impact for the current year and two subsequent Fiscal Years.*☐ 1. Additional expenditures in the current State Fiscal Year. (Approximate)

\$ _____

It is anticipated that State agencies will:☐ a. Absorb these additional costs within their existing budgets and resources.☐ b. Increase the currently authorized budget level for the _____ Fiscal Year☐ 2. Savings in the current State Fiscal Year. (Approximate)

\$ _____

☐ 3. No fiscal impact exists. This regulation does not affect any State agency or program.☒ 4. Other. Explain The Department of Fish and Wildlife expects an additional \$57,891 in revenue from elk tag sales in FY 2023/24 and ongoing until regulation change is superceded.**C. FISCAL EFFECT ON FEDERAL FUNDING OF STATE PROGRAMS** *Indicate appropriate boxes 1 through 4 and attach calculations and assumptions of fiscal impact for the current year and two subsequent Fiscal Years.*☐ 1. Additional expenditures in the current State Fiscal Year. (Approximate)

\$ _____

☐ 2. Savings in the current State Fiscal Year. (Approximate)

\$ _____

☒ 3. No fiscal impact exists. This regulation does not affect any federally funded State agency or program.☐ 4. Other. Explain _____

FISCAL OFFICER SIGNATURE

DocuSigned by:

6658B761E2D347D...

DATE

11/9/2022

The signature attests that the agency has completed the STD. 399 according to the instructions in SAM sections 6601-6616, and understands the impacts of the proposed rulemaking. State boards, offices, or departments not under an Agency Secretary must have the form signed by the highest ranking official in the organization.

AGENCY SECRETARY



DATE

Finance approval and signature is required when SAM sections 6601-6616 require completion of Fiscal Impact Statement in the STD. 399.

DEPARTMENT OF FINANCE PROGRAM BUDGET MANAGER



DATE

STD 399 Addendum

Amend Section 364
Title 14, California Code of Regulations
Re: Elk Hunting

ECONOMIC IMPACT STATEMENT**Summary**

The proposed amendments would increase available elk tags (112 tags) and expand total elk hunt zones acreage (12,528,989 acres), resulting in increases in elk hunting opportunities, and potential reductions in private property owner conflicts with elk.

Table 1. Proposed Additional Elk Tags and Hunt Zone Acreage

Hunt Zone	Number of Additional Tags	Hunt Zone Acreage
Northwestern	22	2,412,822
Siskiyou	10	1,362,945
Bear Valley (modified)	0	496,865
Cache Creek (modified)	0	178,481
Gabilan (new)	10	2,370,013
Central Coast (new)	20	1,581,657
La Panza (modified)	0	1,657,396
Tehachapi (new)	50	2,468,810
Totals	112	12,528,989

A. ESTIMATED PRIVATE SECTOR COSTS IMPACTS

1. Answer (from STD 399): h. None of the above

No new private sector cost impacts are necessarily incurred by representative persons or businesses in reasonable compliance with the proposed regulatory amendments.

Individuals

The Department regulates hunting as a tool to both manage elk populations and provide public recreation opportunities. No change in fees or other nondiscretionary costs are introduced by the proposed amendments.

Over the previous ten years in which separate elk tag draw applications have been offered, there has been a substantial shortfall in number of tags issued compared to the

applications for the elk tag draws. The additional (112) elk tags offered may, all other things equal, improve the tag drawing odds. If the number of draw applications increase in kind, the odds may remain unchanged. However in the end, more hunters will receive tags as a result of the increased tag quotas and hunt zone acreage.

Businesses

If greater numbers of hunters visit the areas with increased opportunities, businesses that provide goods and services to hunters (fuel, food, accommodations, sporting goods and general retail) should benefit from increased sales. However, the net increase in hunting trips associated with 112 additional tags and is not anticipated to be substantial enough to significantly increase retail revenues across the state. A number of outside influences may impact the decision to hunt such as: weather, game abundance, gas prices, competing recreational activities, and other unknown factors beside tag availability. Some private property owners may benefit from the potential reduction in damage caused by elk herds as a result of proposed increases in tag quotas and hunting zone acreage.

FISCAL IMPACT STATEMENT

A. FISCAL EFFECT ON LOCAL GOVERNMENT

Answer: 5. No fiscal impact exists. This regulation does not affect any local entity or program.

B. FISCAL EFFECT ON STATE GOVERNMENT

4. Other. Explain:

The Commission estimates that the Department may have increased tag sales revenue totaling approximately \$57,891.40, in the 2023 elk hunting season.

Table 3. Department Potential Additional Elk Tag Revenue

Potential Additional Tag Revenue	2023 Proposed additional tags	2023 Fee	Total
Resident Elk Tag	+111	\$507.41	\$56,322.00
Non-Resident Elk Tag	+1	\$1,569.40	\$1,569.40
Grand Total			\$57,891.40

Notes: Estimates using data from CDFW License and Revenue Branch, 2022.

C. FISCAL EFFECT ON FEDERAL FUNDING OF STATE PROGRAMS

Answer: 3. No fiscal impact exists. This regulation does not affect any federally funded State agency or program.



Proposed Elk Hunting Regulation Changes for 2023-24

Dr. Tom Batter

Elk and Pronghorn Coordinator

Game Conservation Program – Wildlife Branch

California Department of Fish and Wildlife

Fish and Game Commission Meeting

December 15, 2022

San Diego, CA

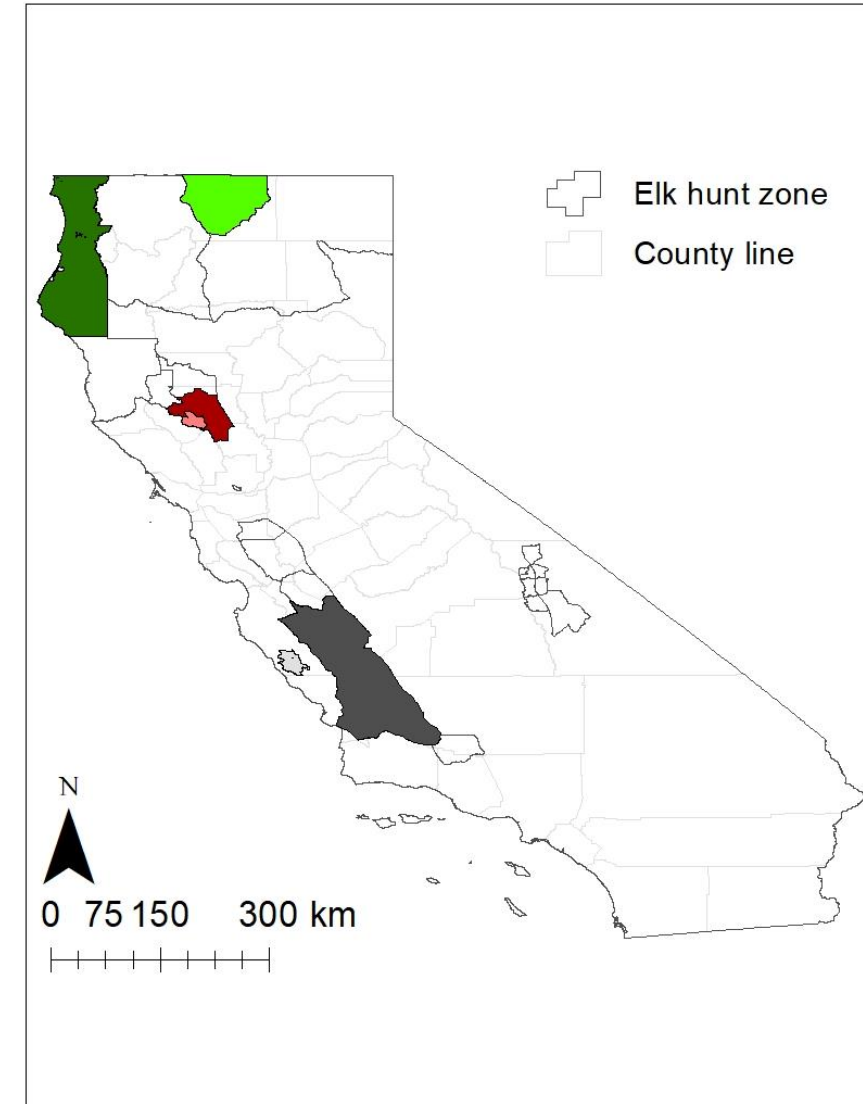
Background

- Elk populations are increasing and expanding/shifting range
- Human-elk conflict above tolerable levels
- Threat of disease and potential hybridization
- Bull:cow objectives not being met

Region 1 – Northern Region

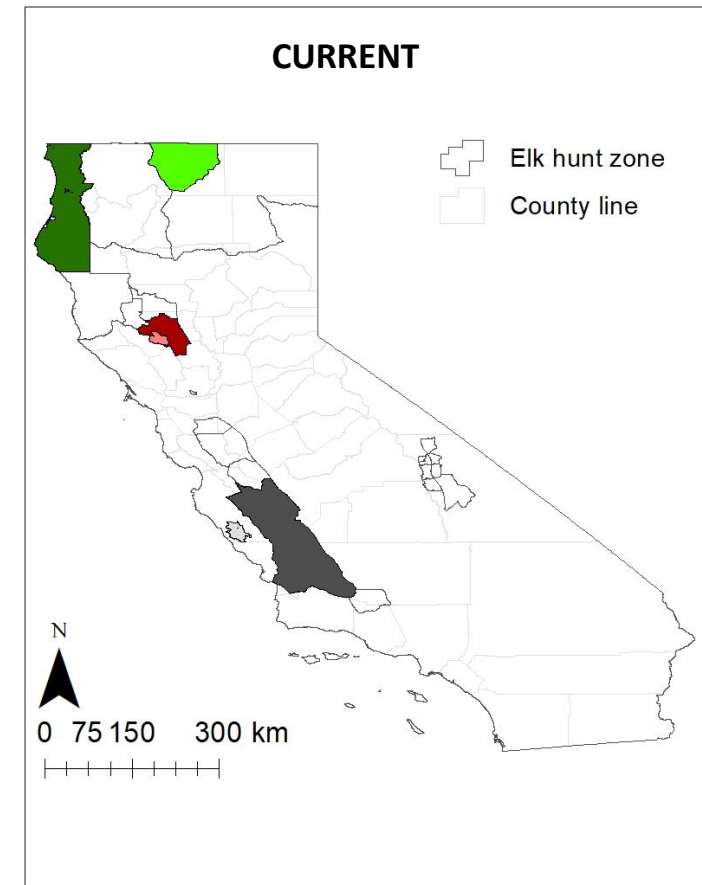
Region 2 – North Central Region

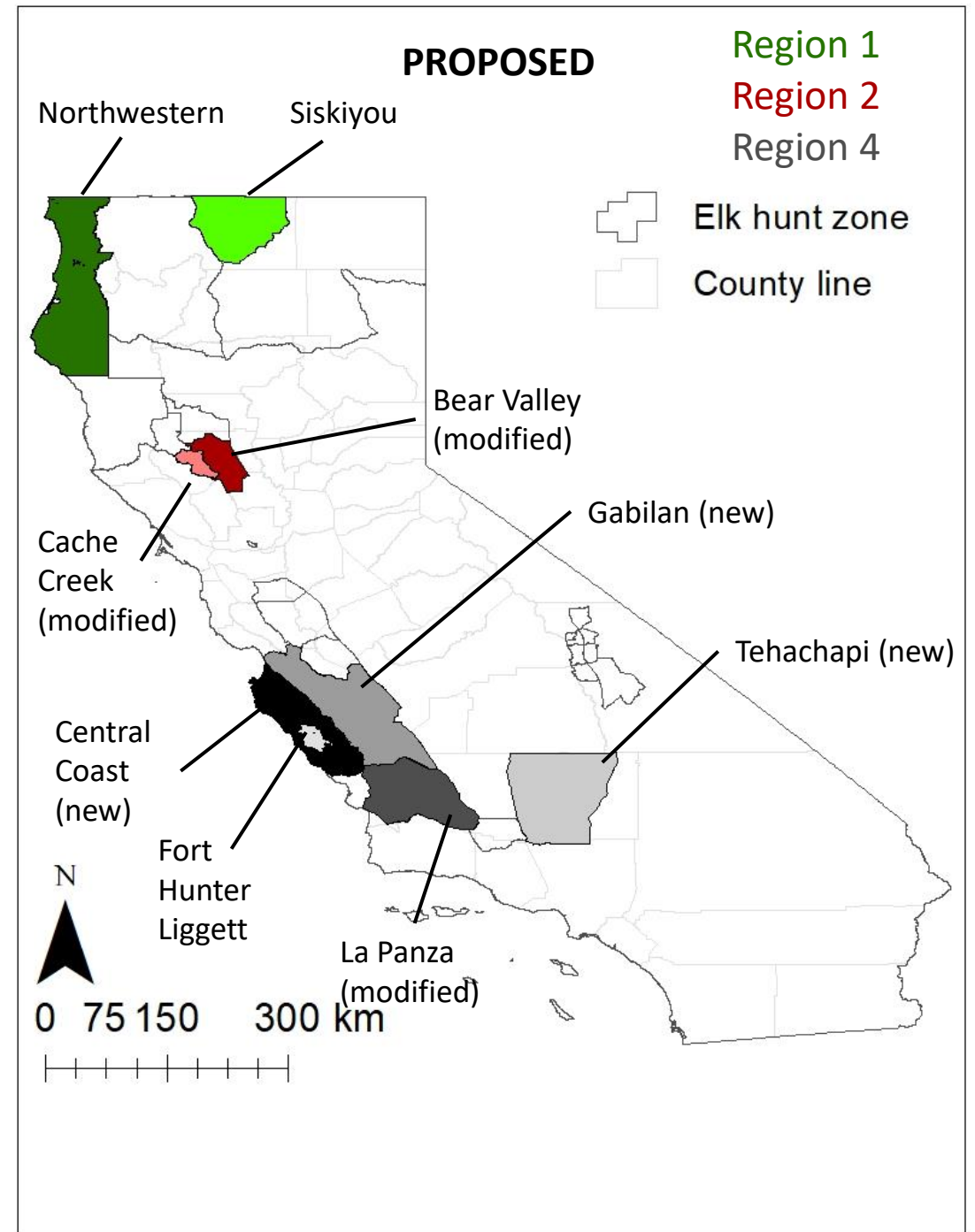
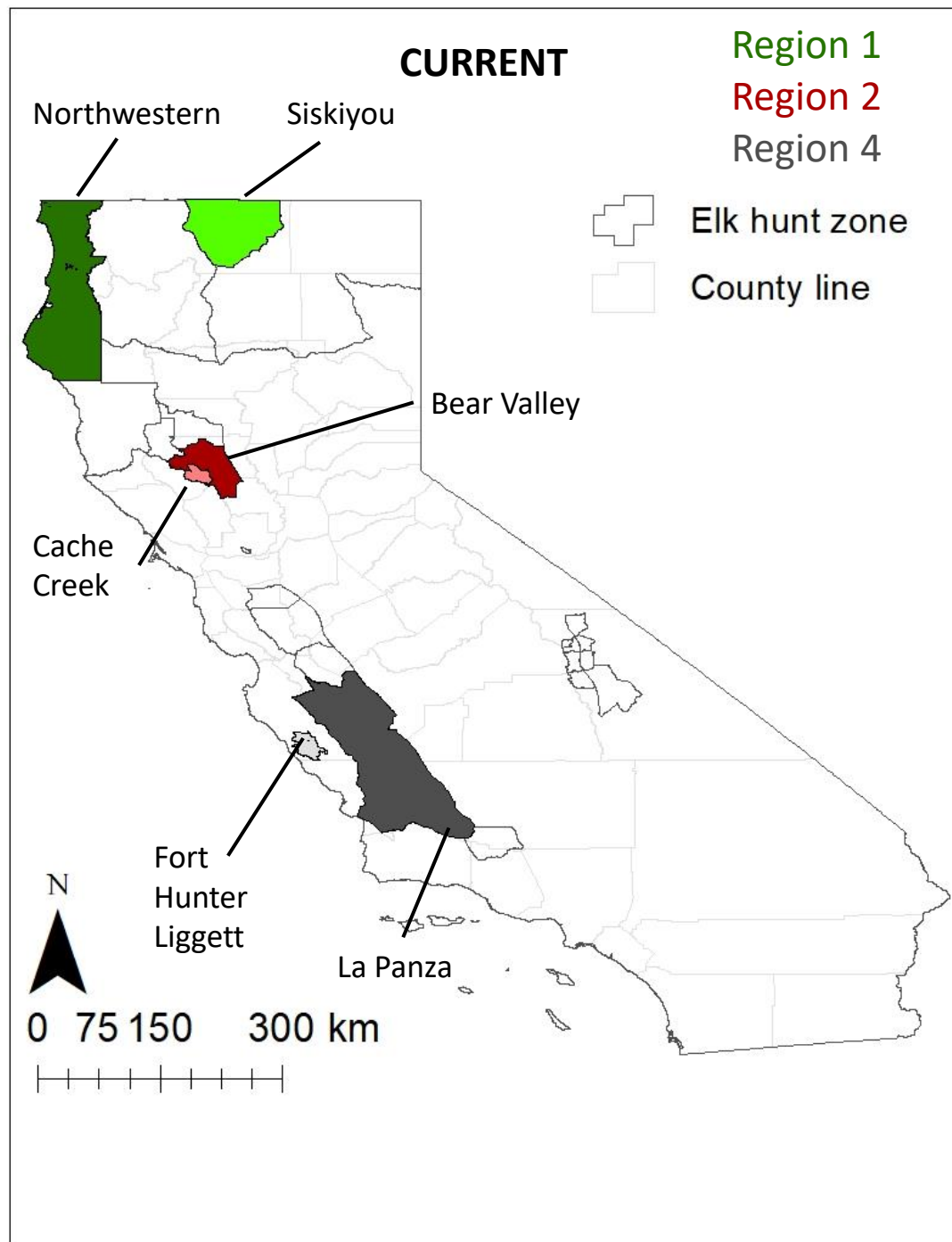
Region 4 – Central Region



2023-24 Elk Hunting Regulation Change Proposals

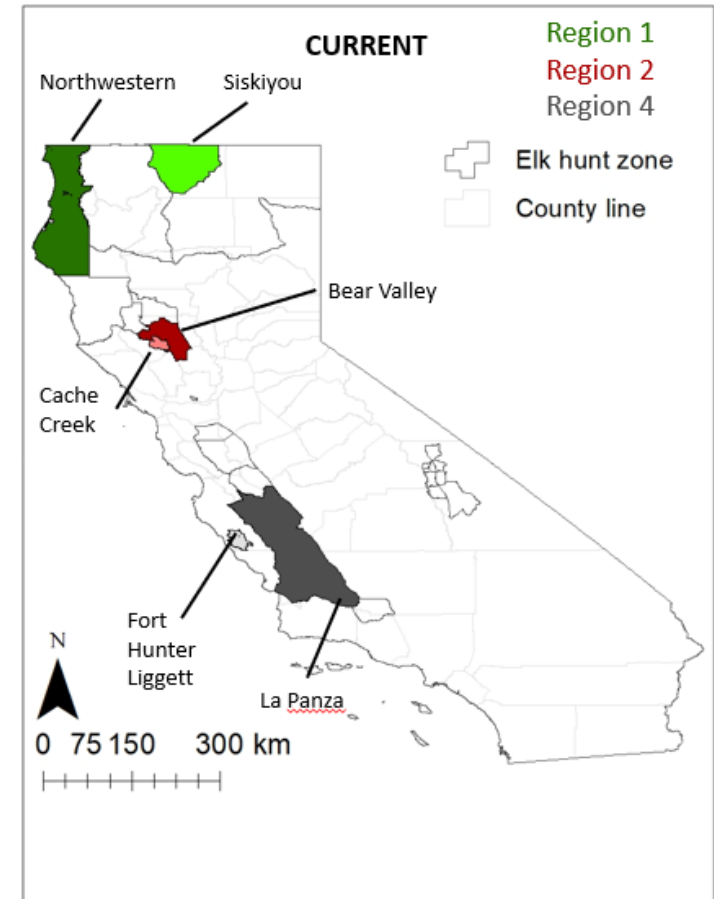
- Region 1 – **Northern Region:**
 - Increase tag quotas for 2 Roosevelt Elk Hunt Zones
 - Adjust season dates for 1 Roosevelt Elk Hunt Zone
- Region 2 – **North Central Region:**
 - Modify hunt zone boundaries for 2 adjacent Tule Elk Hunt Zones
- Region 4 – **Central Region:**
 - Establish 2 new Tule Elk Hunt Zones/General Methods hunts and modify boundary of 1 Tule Elk Hunt Zone
 - Establish 1 new Rocky Mountain Elk Hunt Zone/General Methods hunt





Current Public Tag Quotas

	2022 Quota	2022 Quota
Hunt Zone	Bull	Antlerless
Northwestern	3	15
Siskiyou	20	20
Bear Valley	2	1
Cache Creek	3 [^]	2
Gabilan	0	0
Central Coast	0	0
La Panza	12	12
Tehachapi	0	0



[^]1 bull apprentice tag

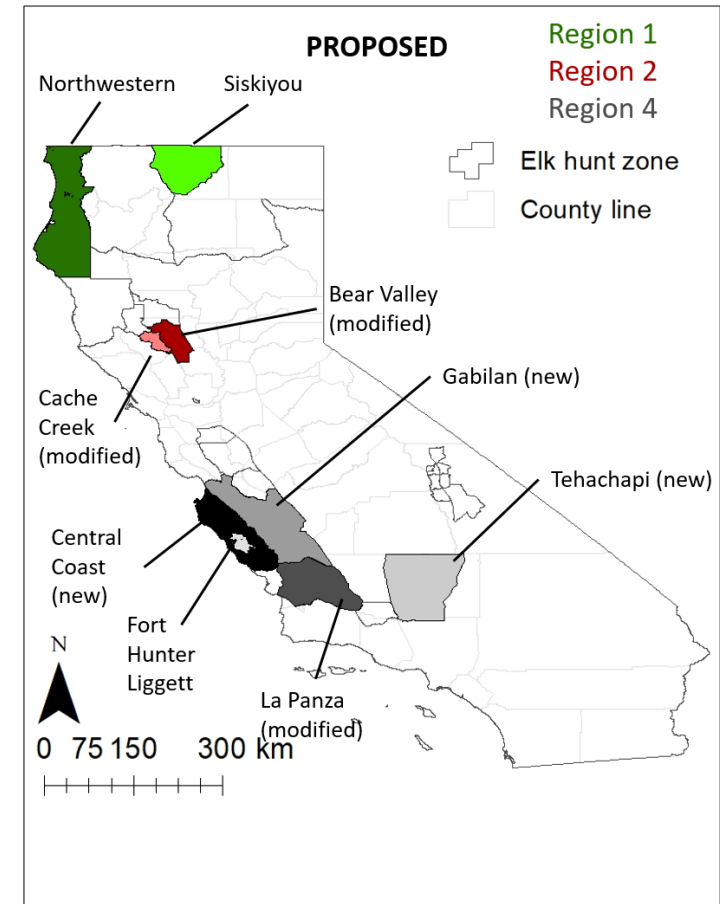


Proposed Changes to Public Tag Quotas

	2022 Quota	2022 Quota	Proposed Change	Proposed Change
Hunt Zone	Bull	Antlerless	Bull	Antlerless
Northwestern	3	15	+22	0
Siskiyou	20	20	0	+10
Bear Valley	2	1	0	0
Cache Creek	3^	2	0	0
Gabilan	0	0	+4	+6
Central Coast	0	0	+10	+10
La Panza	12	12	0	0
Tehachapi	0	0	+25*	+25*

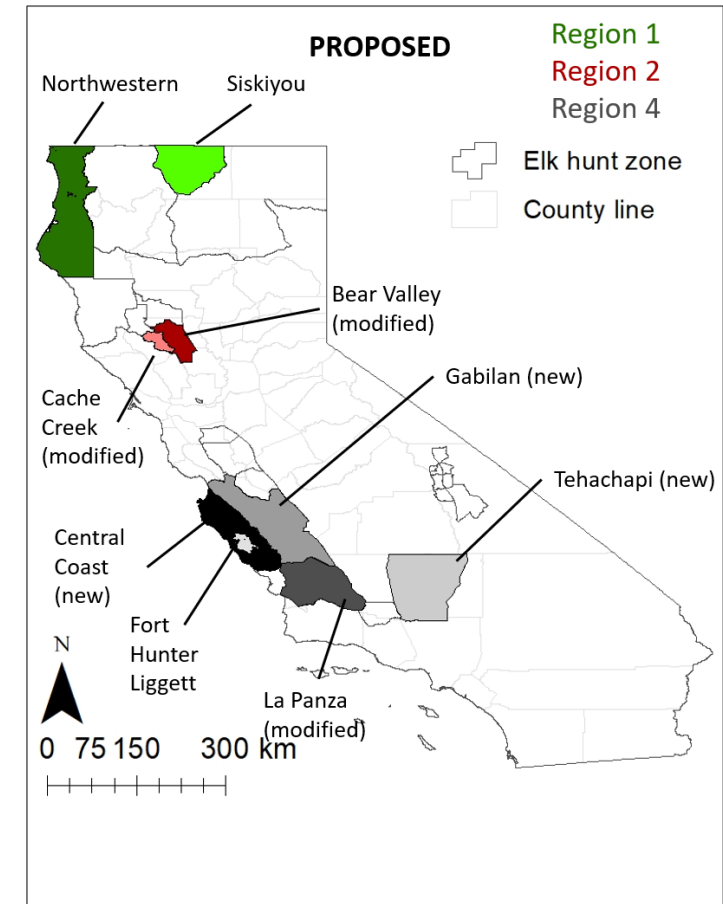
^1 bull apprentice tag

*20 bull and 15 antlerless will be assigned to the 364.1 SHARE program



Current and Proposed Public Tag Quotas

	2022 Quota		Proposed Change		2023 Quota	2023 Quota
Hunt Zone	Bull	Antlerless	Bull	Antlerless	Bull	Antlerless
Northwestern	3	15	+22	0	25	15
Siskiyou	20	20	0	+10	20	30
Bear Valley	2	1	0	0	2	1
Cache Creek	3^	2	0	0	3^	2
Gabilan	0	0	+4	+6	4	6
Central Coast	0	0	+10	+10	10	10
La Panza	12	12	0	0	12	12
Tehachapi	0	0	+25*	+25*	25*	25*



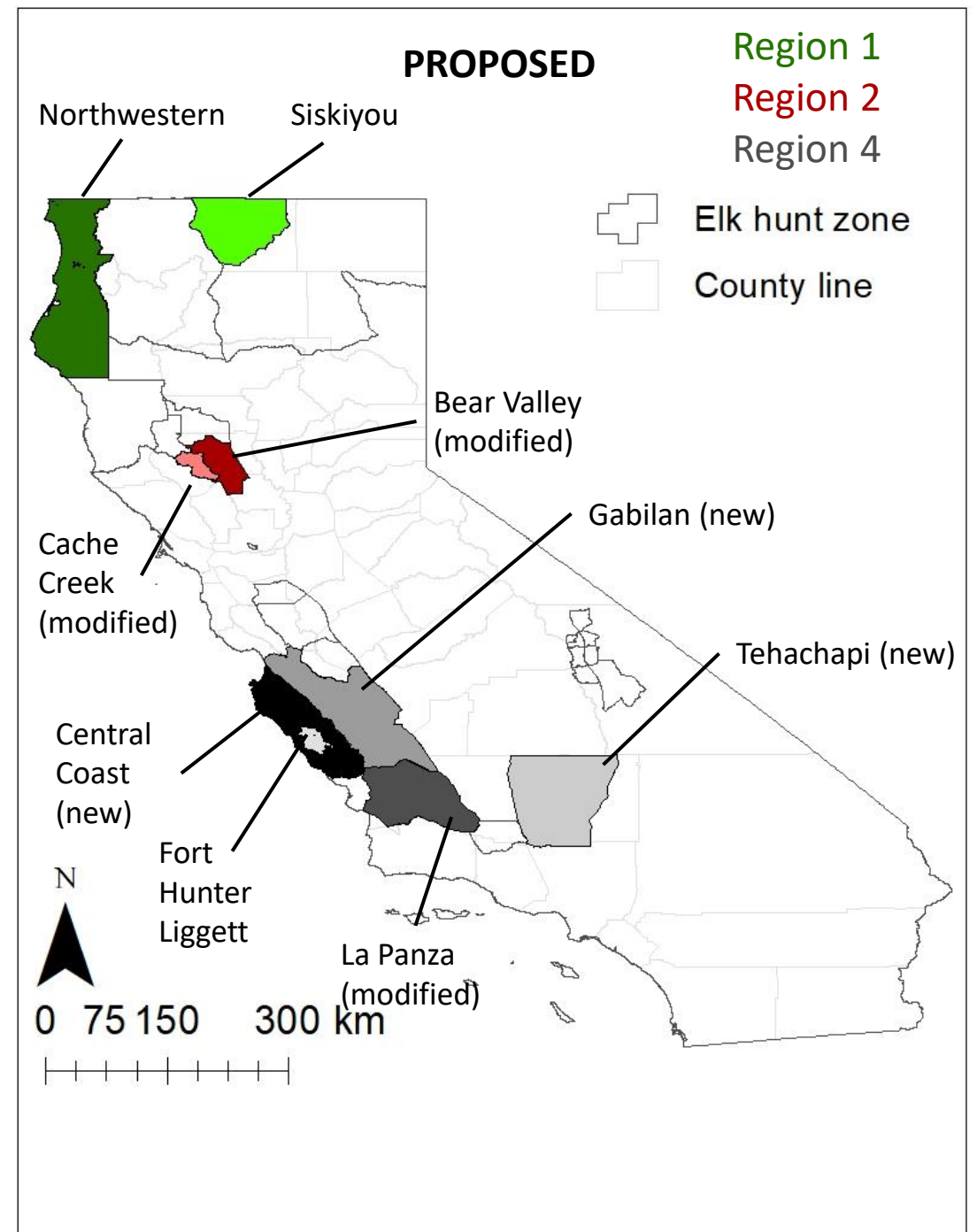
^1 bull apprentice tag

*20 bull and 15 antlerless will be assigned to the 364.1 SHARE program



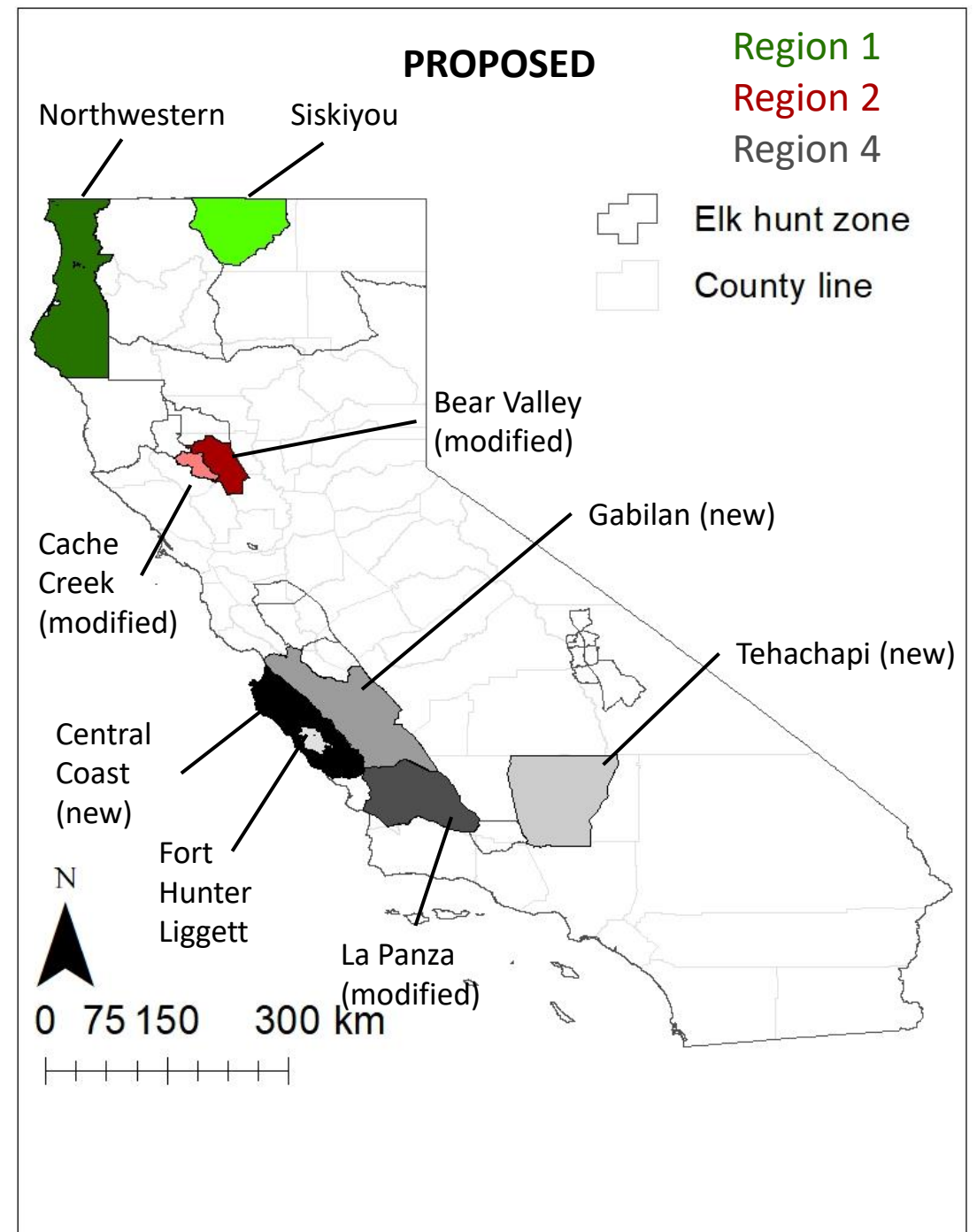
Intended Outcomes

- Provide increased public hunt opportunity
- Alleviate human-elk conflict
- Establish boundaries that reflect population dynamics
- Achieve bull:cow objectives
- Reduce disease transmission
- Prevent range overlap/hybridization across subspecies



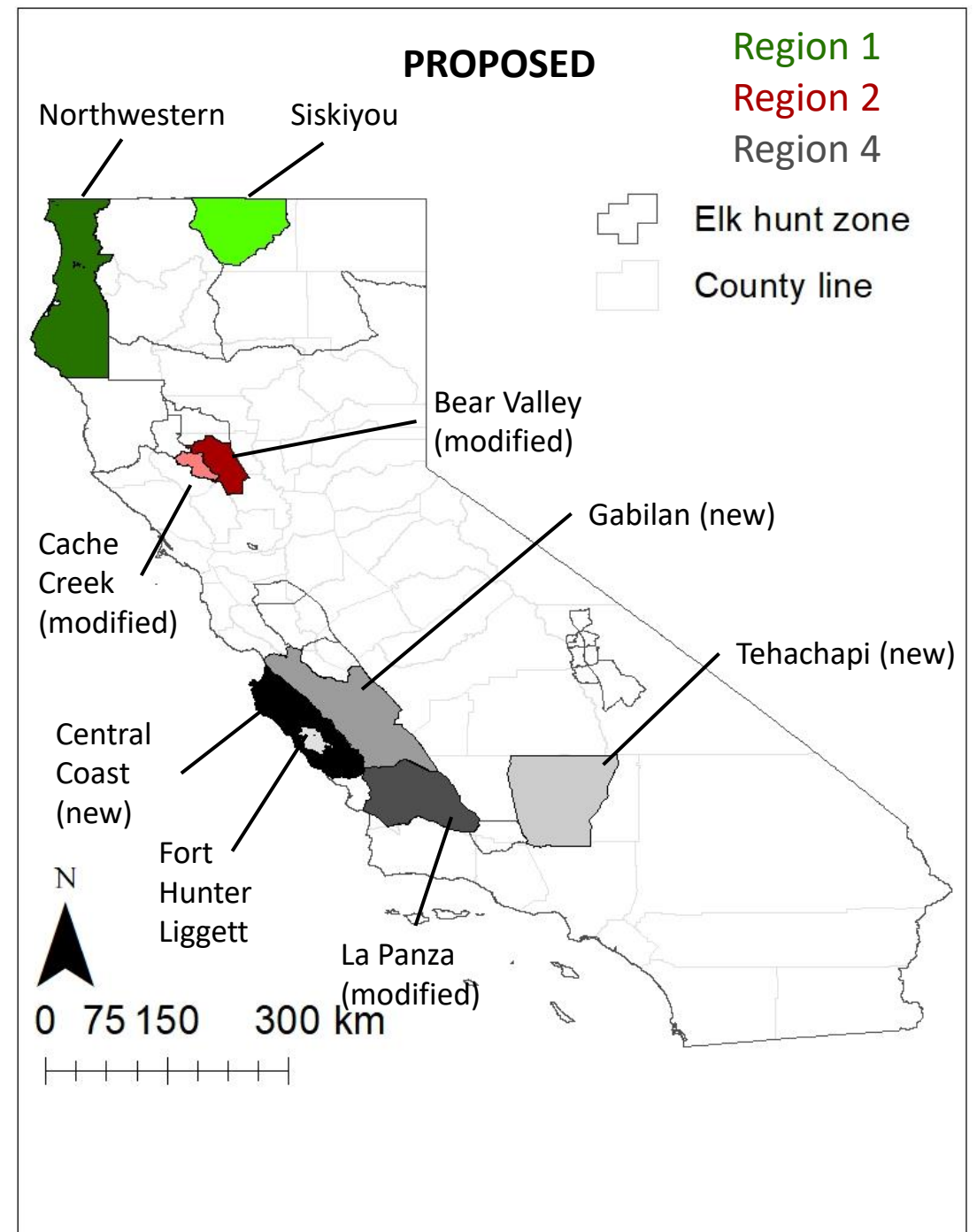
Tribal Outreach

- E-mail notice and hard copy letters sent to 315 Tribal representatives of 182 Tribes
- Response received from 10 Tribes to date
- 3 Tribes requested formal consultation



General Public Outreach

- E-mail notice to 105 local agencies, NGOs, and members of the general public
- Response received from 1 member of the general public
- Public member suggested longer season lengths





Dr. Tom Batter

Thomas.Batter@wildlife.ca.gov

Elk and Pronghorn Coordinator

Game Conservation Program – Wildlife Branch

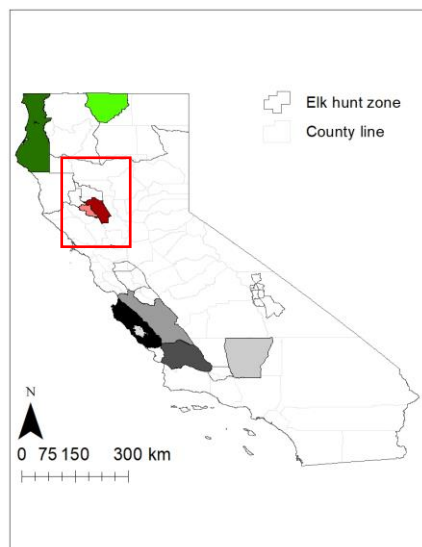
California Department of Fish and Wildlife

Fish and Game Commission Meeting

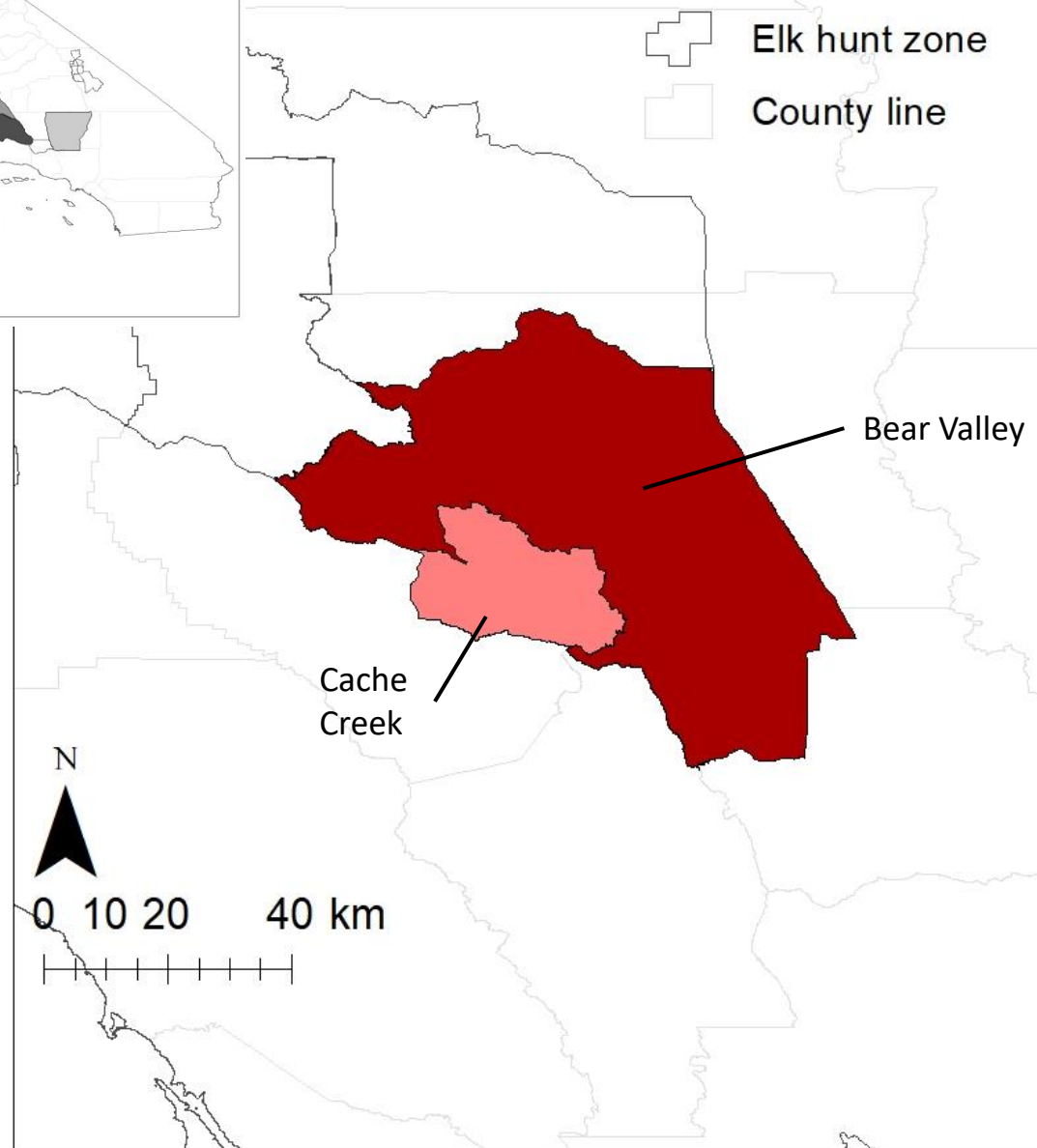
December 15, 2022

San Diego, CA

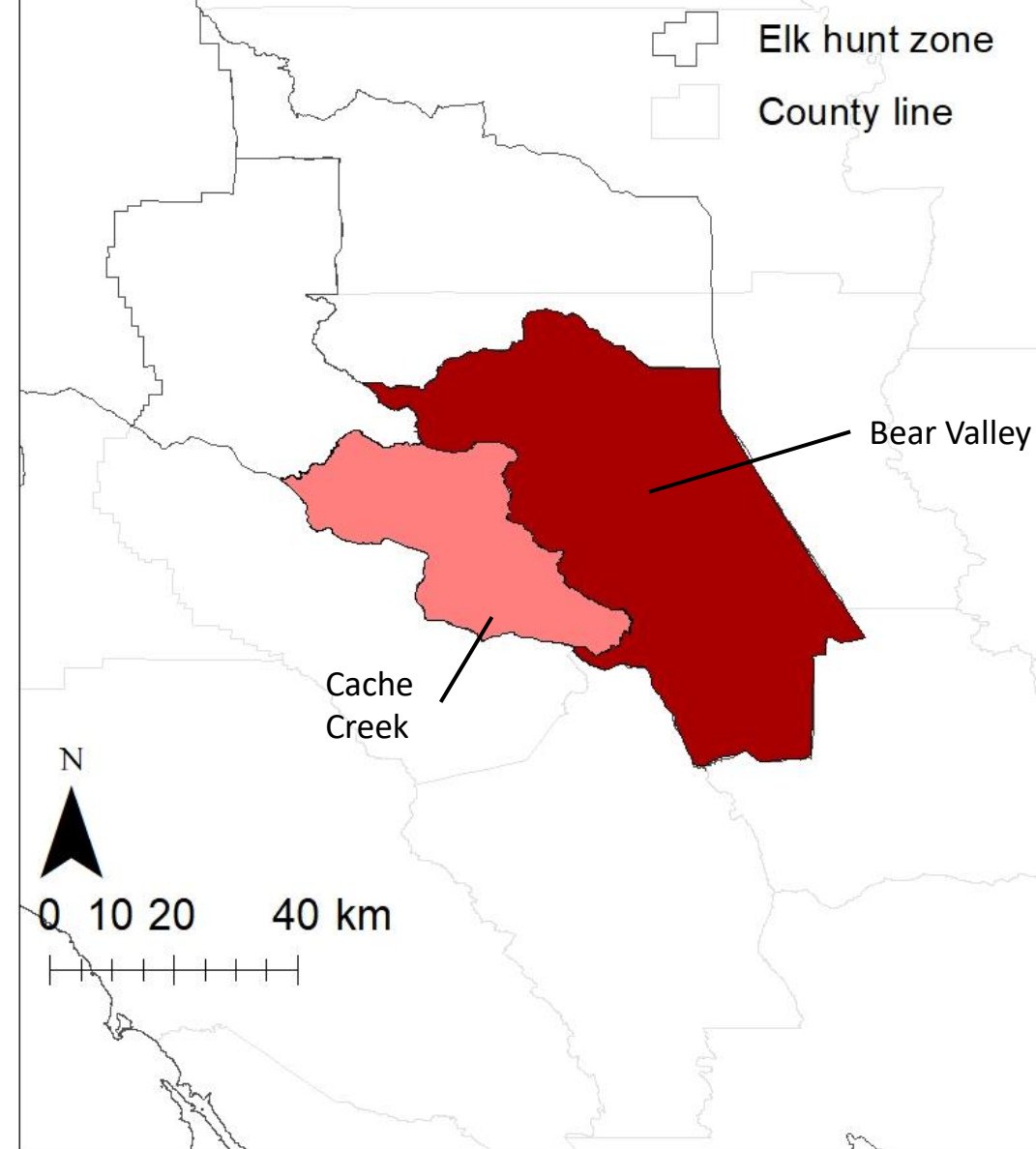


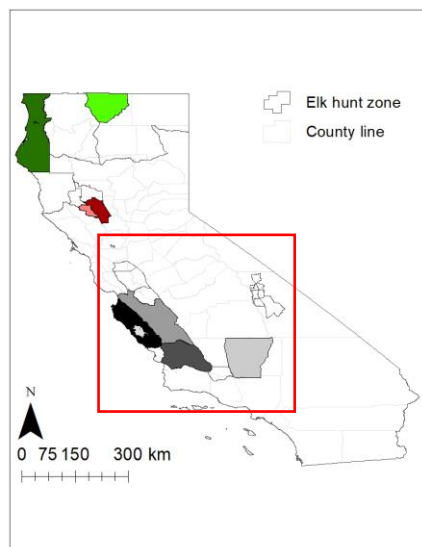


CURRENT



PROPOSED



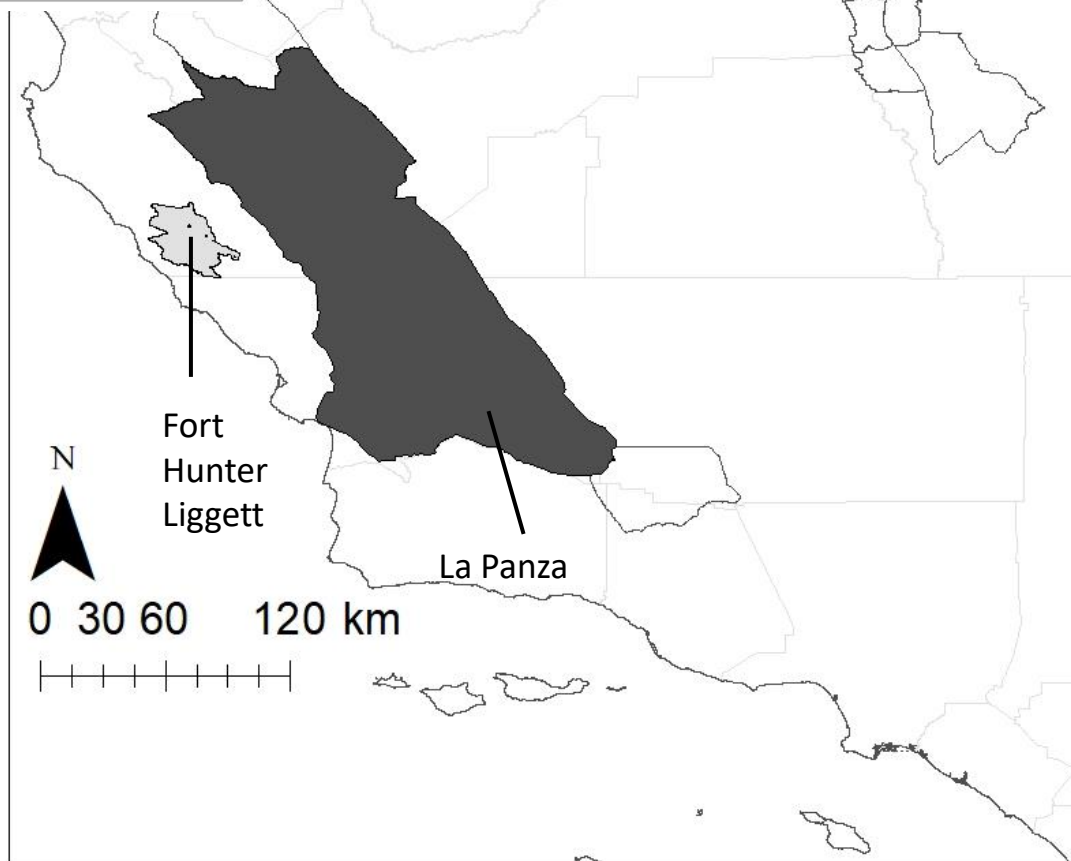


CURRENT



Elk hunt zone

County line

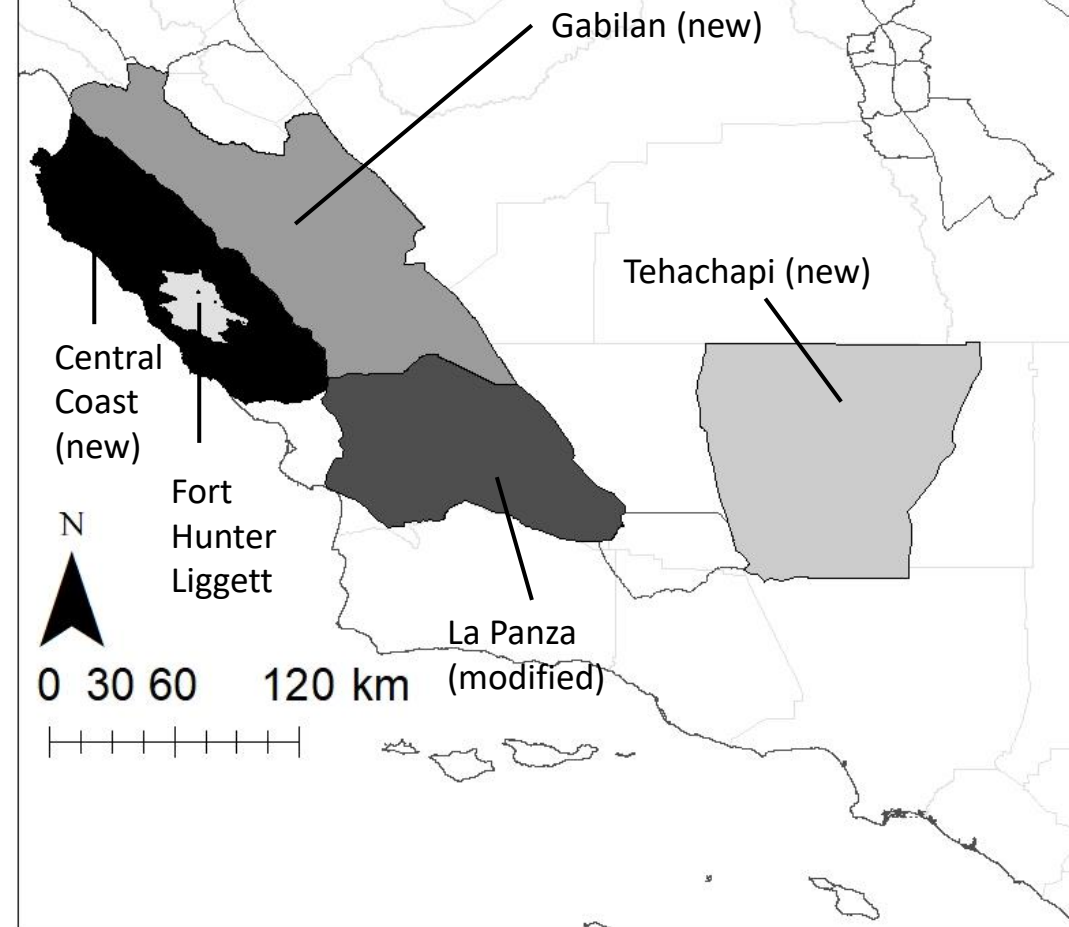


PROPOSED



Elk hunt zone

County line



FGC meeting, December 15, 2022, Agenda item # 17, "Elk Hunting"

Phoebe Lenhart [REDACTED]

Thu 12/01/2022 01:02 PM

To: FGC@public.govdelivery.com <FGC@public.govdelivery.com>;FGC <FGC@fgc.ca.gov>

Dear FGC,

In all due respect, I am requesting that any discussion "to amend" (Agenda item #17) "Elk Hunting" be re-scheduled to the FGC's February, 2023 meeting. The DFW has not provided the FGC and the public with their "materials" before the deadline for public comment, December 1, 2022. The DFW's "materials" are imperative in order to make an educated, scientific decision on the matter "to amend" the Roosevelt elk hunting regulations. Per the DFW, their "materials" regarding their request to amend 364 and 364.1 will not be available to the public and to the FGC until "shortly before or after the December 15, 2022 meeting".

Commissioners, the DFW is not submitting "materials" that are critical for informed decision making until 15 days AFTER the deadline for the public to submit comments! It even reads that the FGC, themselves, may or may not receive the DFW's materials in time for the FGC's meeting on December 15. I believe the negligent DFW and their untimely documents are an interference with the public's rights to fully participate in this government process (and in the FGC's ability to make sound decisions).

Further, Commissioners, this is NOT the first time that the DFW has been remiss in providing "materials" for the public to review before the deadline for public comments. If you will refer to a FGC meeting 3 years ago, the DFW submitted their report to the FGC one week after the deadline for public comment. Again, in the DFW's remiss, the department is obstructing the public's right to fully participate in this government process.

I think it is important that the FGC and the public have information on the population of the herds which will not be available until the elk hunting season ends on December 20, 2022. How can any science based increase in elk hunting quotas for the bulls and cows be determined without accurate populations of the small herds in Del Norte County? I believe a few of these herds are so small or underrepresented by bulls, that hunting should not be allowed. Thus, rescheduling any discussion about amending "elk hunting" would be more responsibly addressed by the public and the FGC in February, 2023.

Further, I think that it is crucial that the public and the FGC have current data on the number of Roosevelt elk (by gender and site) who have been euthanized due to TAHD. How is it possible to approve any increase in elk hunting quotas without knowing how quickly and where the TAHD is spreading? Again, rescheduling any discussion about amending "elk hunting" would be more accountable incorporating the number and location of euthanized Roosevelt elk.

In conclusion, I believe it is appropriate and absolutely necessary to postpone any discussion and decision on "amending" Elk Hunting (Agenda item #17) to the next FGC meeting in 2023. It is the public's right to have the DFW's "materials" available BEFORE the deadline for public comments. As, I

think the FGC, themselves, would appreciate having the DFW's documents before the day of the agenda item, December 15, 2022. Please, also, consider that this is not the first time the DFW has been late submitting their "materials", thus obstructing transparency and the public's ability to participate.

Sincerely,

Phoebe Lenhart

A solid black rectangular box used to redact the signature of Phoebe Lenhart.

Supporters for Del Norte Roosevelt Elk

Sent from my iPad