

Decadal Management Review: Appendix D Partner Reports



Surfer catching a wave.
Credit - Bryce Bradford, CC BY-NC-ND 2.0

About this Document

The Decadal Management Review (Review) includes available sources of information about the Marine Protected Area (MPA) Network. The California Department of Fish and Wildlife solicited reports from MPA Management Program partners to gather their input for the Review. This Appendix contains links to these reports, received in February 2022, from partner agencies and organizations listed alphabetically.

Appendix D Contents

1. California Cooperative Fisheries Investigation Partner Report
2. California Department of Parks and Recreation Partner Report
3. California Marine Sanctuary Foundation Partner Report
4. California State Lands Commission Partner Report
5. California State Water Resources Control Board Partner Report
6. Center for Community and Citizen Science Partner Reports
 - a. Examining the Role of Community and Citizen Science in MPA Monitoring
 - b. Using MPA Watch Data to Analyze Human Activities Along the California Coast
7. Heal the Bay Partner Report
8. Integrated Ocean Observing System Partner Report
9. Los Angeles Waterkeeper Partner Report
10. Marine Applied Research and Exploration Partner Report
11. Marine Protected Area Collaborative Network Partner Report
12. MPA Watch Partner Report
13. National Oceanic and Atmospheric Administration Partner Reports
 - a. Channel Islands National Marine Sanctuary Contributions to the MPA Review
 - b. Monterey Bay National Marine Sanctuary Contributions to the MPA Review
14. Orange County Coastkeeper Partner Report
15. Partnership for the Interdisciplinary Studies of Coastal Oceans Partner Report
16. ProtectedSeas Marine Monitor Partner Report
17. Reef Check Partner Report
18. Resources Legacy Fund Partner Report
19. Seabird Protection Network Partner Report

1. California Cooperative Fisheries Investigations

The California Cooperative Oceanic Fisheries Investigations (CalCOFI) is one of the world's longest-running integrated ocean ecosystem sampling programs. CalCOFI is a collaborative program of state, federal, and academic partners that samples and collects biological, chemical, and physical observations and specimens in state, federal, and international waters from San Diego to north of San Francisco.



- [Assessing Climate Change, Oceanographic Context, Larval Abundance and Distribution, and Pelagic Habitat Characteristics in the Context of the California MPA Network.](#)

2. California Department of Parks and Recreation

The California Department of Parks and Recreation (State Parks) is a member of the MPA Statewide Leadership Team and has been an integral contributor in outreach and education efforts for California's MPAs. With 42 coastal California State Park units adjacent to 35 MPAs, California State Parks interpreters use traditional in-person interpretation and cutting-edge digital technologies to engage audiences and deliver MPA messaging both near and far from the California coast.



- [California Department of Parks and Recreation Marine Protected Area Outreach and Education Report](#)

3. California Marine Sanctuary Foundation

The California Marine Sanctuary Foundation (CMSF) works to protect coastal ecosystems in partnership with local communities, government agencies, tribal communities, harbors and marinas, and non-government organizations. Focused on MPA education and outreach efforts, CMSF develops standardized educational products, and increases stewardship through novel outreach and education approaches.



- [California Marine Sanctuary Foundation Accomplishments and Lessons Learned](#)

4. California State Lands Commission

The State Lands Commission (SLC) has jurisdiction over the state's tide and submerged lands extending seaward three nautical miles from shore, and manages these lands for activities related to fisheries, navigation, commerce, recreation, and environmental stewardship. The SLC has worked to integrate MPA considerations into its practices and programs so that its leases reflect the conservation and protection goals and regulations of the MPA Network.



- [MPA Decadal Management Review – State Lands Commission](#)

5. California State Water Resources Control Board

The State Water Resources Control Board (State Water Board), along with the nine Regional Water Quality Control Boards (Regional Water Boards), work to preserve, protect, enhance, and restore water quality in California’s waters, including 1,000 miles of coastline and 1,300,000 acres of bays and estuaries. The State Water Board plays an important role in regulating water quality in California’s ocean waters, and several of their projects and programs support the goals of the MLPA: protecting water quality, marine life, and marine habitat.



- [MPA Decadal Management Review – State Water Resources Control Board](#)

6. Center for Community and Citizen Science

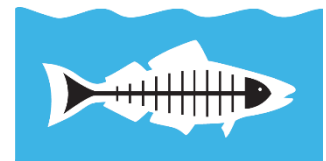
The Center for Community and Citizen Science (Center), based at the University of California, Davis – School of Education, helps scientists, communities, and citizens collaborate on science to address environmental problems as a part of civic life. The Center engages a wide array of on- and off-campus partners to advance research, practice, and dialog on community and citizen science, and submitted two reports to support the MPA Decadal Management Review.



- [Examining the Role of Community and Citizen Science in MPA Implementation](#)
- [Using MPA Watch Data to Analyze Human Activities Along the California Coast](#)

7. Heal the Bay

Heal the Bay is an environmental non-profit organization based in Los Angeles. Since the inception of California’s MPA Network, Heal the Bay has worked to spearhead educational programs and outreach opportunities, and collaborated across unique and diverse stakeholders to engage with the community, increase compliance, and contribute to enforcement activity.



Heal the Bay

- [A Ten-year Summary of MPA Outreach, Education, Research, Monitoring, and Stakeholder Engagement in Los Angeles County](#)

8. Integrated Ocean Observing System

Spatial and temporal variability in California’s marine ecosystems occurs both from environmental variation and from human impacts including fisheries. Central and Northern California Ocean Observing System and Southern California Coastal Ocean Observing System used the Integrated Ocean Observing System framework to curate collections of MPA-relevant datasets and develop data visualization and exploration tools.



- [Integrated Ocean Observing Systems for Assessing MPAs Across California](#)

9. Los Angeles Waterkeeper

Los Angeles Waterkeeper is a chapter of Waterkeeper Alliance, which works for swimmable, drinkable, and fishable waterways worldwide. This report focuses on the boat-based patrols off mainland Los Angeles County using MPA Watch style surveys.

- [Connecting Community Through MPA Watch Boat-based Surveys and the MPA Collaborative Network](#)



10. Marine Applied Research and Exploration

Marine Applied Research and Exploration (MARE) was founded as a non-profit organization to explore and document deep-water ecosystems to assist in their conservation and management. To date, MARE has documented over 1,678 miles of seafloor off California's coast, most of which had never been viewed before.

- [A Time-series of Remotely Operated Vehicle Surveys Reveals MPA Effects and Regional Trends in Mid-depth Reef Across California's MPA Network](#)



11. Marine Protected Area Collaborative Network

The Marine Protected Area Collaborative Network is an organization formed to help ensure local constituents have a voice in the management of their local MPAs. With 14 individual "Collaboratives" representing California's coastal counties, the MPA Collaborative Network provides a forum for any interested parties to work together to enhance awareness and understanding about their local MPAs.

- [MPA Collaborative Network – Fostering Local Stewardship in Marine Resource Management](#)



12. MPA Watch

MPA Watch is a community science program that was created in 2008 to establish a coordinated effort to collect human use data in and around California MPAs. Then in 2012, MPA Watch recruited an advisory group of scientists to standardize protocol and make human use data collection directly comparable across the state expanding upon work began in 2008.

- [MPA Watch – Community Science for Stewardship of Ocean Resources](#)



13. National Oceanic and Atmospheric Administration

The National Oceanic and Atmospheric Administration (NOAA) oversees all national marine sanctuaries including the three directly off California's coast and overlapping with state waters. Two of the three national marine sanctuaries in California submitted reports detailing key programs and activities implemented to support management of California's MPA Network.



**NATIONAL MARINE
SANCTUARIES**

- [NOAA's Channel Islands National Marine Sanctuary Contributions to the MPA Review](#)
- [NOAA's Monterey Bay National Marine Sanctuary Contributions and Recommendations to the MPA Review](#)

14. Orange County Coastkeeper

Orange County Coastkeeper is a chapter of Waterkeeper Alliance, which works for swimmable, drinkable, and fishable waterways worldwide. This report focuses on the work done to date in Orange County MPAs.



**ORANGE COUNTY
COASTKEEPER®**

- [Orange County Coastkeeper Decadal Review Data Submission](#)

15. Partnership for the Interdisciplinary Studies of Coastal Oceans

The Partnership for Interdisciplinary Studies of Coastal Oceans (PISCO) is a consortium of four academic institutions which conduct research that advances scientific understanding of coastal marine ecosystems of the California Current System. PISCO researchers engage in outreach geared toward informing academic, management, policymaker, stakeholder, and general public audiences, and contributed extensively to the science and policy of California's MPA Network.

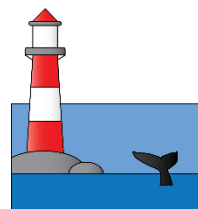


PISCO

- [PISCO Contributions, Challenges, and Recommendations for the Marine Life Protection Act \(MLPA\) Decadal Evaluation Review](#)

16. ProtectedSeas Marine Monitor

ProtectedSeas is a California-based organization that works to provide open data and monitoring solutions to enhance awareness of and compliance with ocean protections. The ProtectedSeas Marine Monitor (M2) utilizes commercial off-the-shelf marine radar to track vessels continuously and autonomously on the water out to five nautical miles from shore to advance enforcement and compliance of California's MPAs.



protectedseas

- [Marine Monitor \(M2\) Shore-based Radar Data in California MPAs](#)

17. Reef Check

The Reef Check Foundation is a California-based 501(c)(3) non-profit organization working to protect and improve the health and sustainability of the world's reefs using citizen science and community-based conservation, both of which are effective and innovative approaches to integrating scientific research, public education, and ocean conservation. Reef Check California is a chapter focused on conserving California's kelp forest ecosystems through community-based monitoring.



- Partner Report: [Reef Check California – Citizen Science MPA Monitoring](#)

18. Resources Legacy Fund

Resources Legacy Fund (RLF) is an independent non-profit organization that partners with leaders in philanthropy, communities, government, science, and business to promote smart policies and secure equitable public funding for the environment, climate change resilience, and healthy communities. Since 2012, RLF has managed approximately \$2 million annually in philanthropic funds to support MPA monitoring, outreach and education, and compliance-related projects.



RESOURCES LEGACY FUND®
CREATIVE SOLUTIONS. LASTING RESULTS.

- [Resources Legacy Fund Key Partner Report](#)

19. Seabird Protection Network

The Seabird Protection Network (SPN) is a multi-organization collaborative led by the Greater Farallones National Marine Sanctuary. SPN works to help restore sensitive seabird colonies along California's Coast, mainly through the reduction of human disturbance.



- [Using Seabird Disturbance Monitoring to Inform Increasing Knowledge of and Compliance with Special Closures on the North Central Coast of California](#)