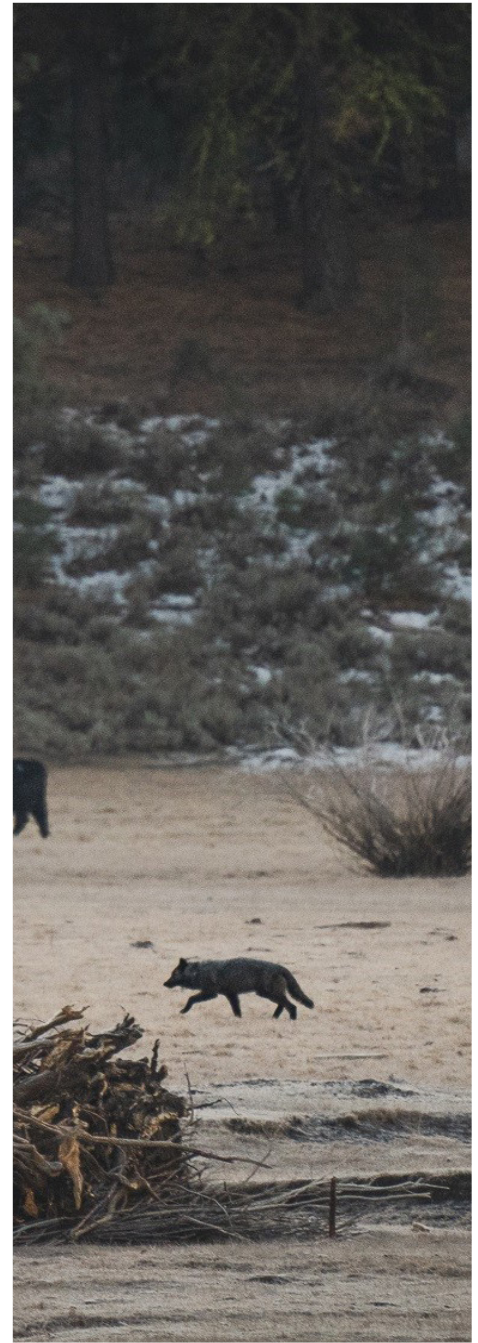
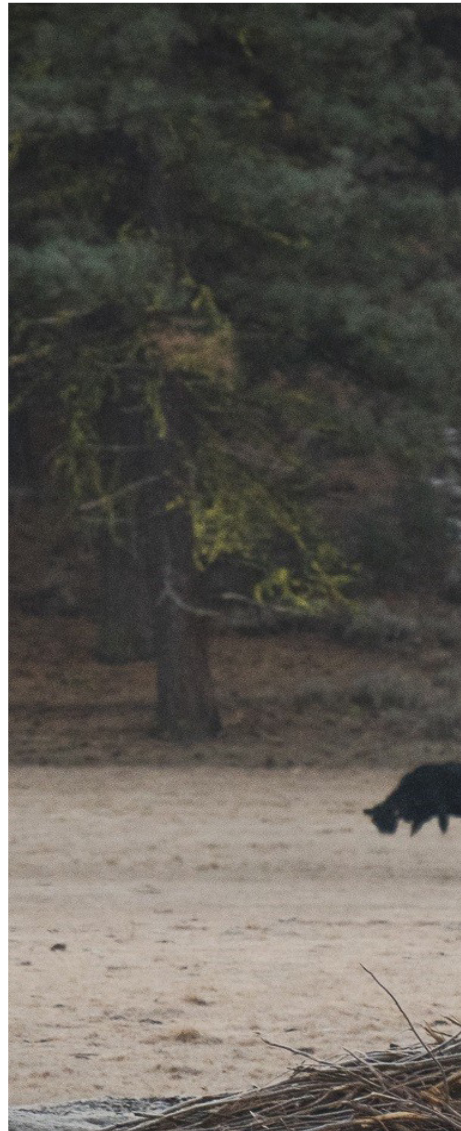


Photo Credit: Morgan Heim



Wolf-Livestock Compensation Pilot Program Summary Report

CALIFORNIA DEPARTMENT OF FISH AND WILDLIFE

APRIL 2024



COMPENSATION FUNDING

In 2021, the California Legislature appropriated \$3 million to the Department of Fish and Wildlife (CDFW) to develop a grant process to compensate eligible livestock producers for:

DIRECT LOSS	DETERRENT METHODS	PAY FOR PRESENCE
Verified loss of livestock occurring on or after September 23, 2021 (Prong 1)	Nonlethal deterrence of wolf presence near livestock (Prong 2)	Indirect impacts of wolf presence on livestock (Prong 3)

An interim program was launched to receive applications for Prong 1 compensation in February 2022 and Prong 2 compensation in May 2022. The pilot program for compensation of all three prongs launched in June 2023. All \$3 million in funding was exhausted by March 8, 2024. Eligible producers received 100% of all funds allocated by the Legislature.

PROGRAM OUTREACH

During development of the wolf-livestock compensation pilot program, CDFW convened a wolf stakeholder working group (SWG) of interested parties with diverse perspectives, experience, and expertise to gather information and provide input to CDFW. CDFW convened a final Wolf SWG Meeting on November 17, 2022.

During the program implementation phase, CDFW co-hosted several Wolf Compensation Pilot Program Technical Assistance workshops with County agency partners in March, April, and October 2023; and provided several presentations to local groups. Interested producers and all applicants were offered one-on-one technical assistance sessions via Microsoft Teams, in-person, telephone, and email as needed.

APPLICATION REVIEW PROCESS

Applications were processed on a first-come basis and underwent a tiered, multi-step internal review process performed by a small team of CDFW staff to confirm eligibility. Funds were not proportionally allocated by compensation type (prong), county, or known wolf pack. Applicants were approved for payment based solely on eligibility, submission of required documents, and processing of completed application packages. Participation in the pilot program was voluntary and open to all eligible producers.

COMPENSATION BY COUNTIES WITH KNOWN WOLF ACTIVITY

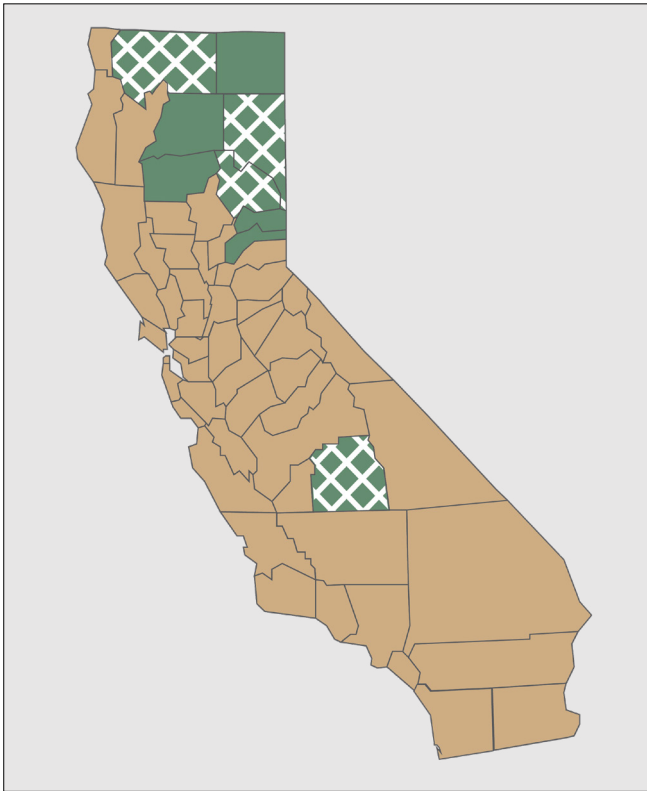


FIGURE 1. California's counties with awarded grants (crosshatched) and known wolf activity (solid green).

A total of 109 wolf compensation grants were awarded through the pilot program.

These grants were awarded to 36 individual producers with livestock operations in 4 of the 9 counties with known wolf activity in California (Figure 1):

- Siskiyou
- Lassen
- Plumas
- Tulare

In these four counties, the following wolf packs are known to have established pack territories: Whaleback, Lassen, Harvey, Beckwourth, Beyem Seyo, and Yowlumni packs.

The Whaleback pack (Siskiyou County) and the Lassen pack (Lassen, Plumas counties) were known to CDFW throughout the interim and pilot program period.

COMPENSATION BY PRONG AND COUNTY

Of the 109 wolf compensation grants, livestock producers received funds for all three prongs: 26 Direct Loss grants (Prong 1) worth \$135,043.95; 56 Nonlethal Deterrent grants (Prong 2) worth \$1,919,825.12; and 27 Pay for Presence grants (Prong 3) worth \$945,130.93 (Figure 2).

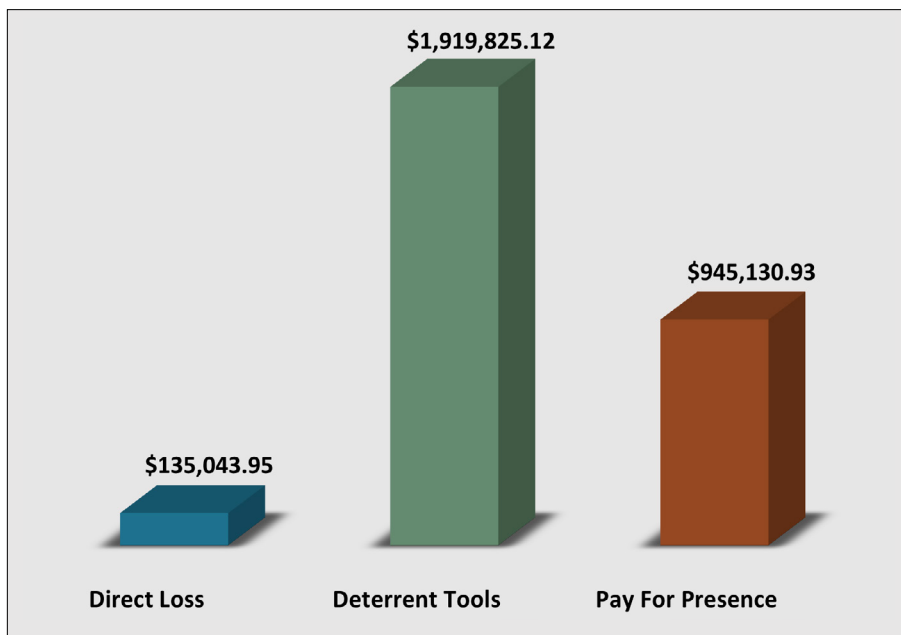


FIGURE 2. Compensation awarded by prong type.

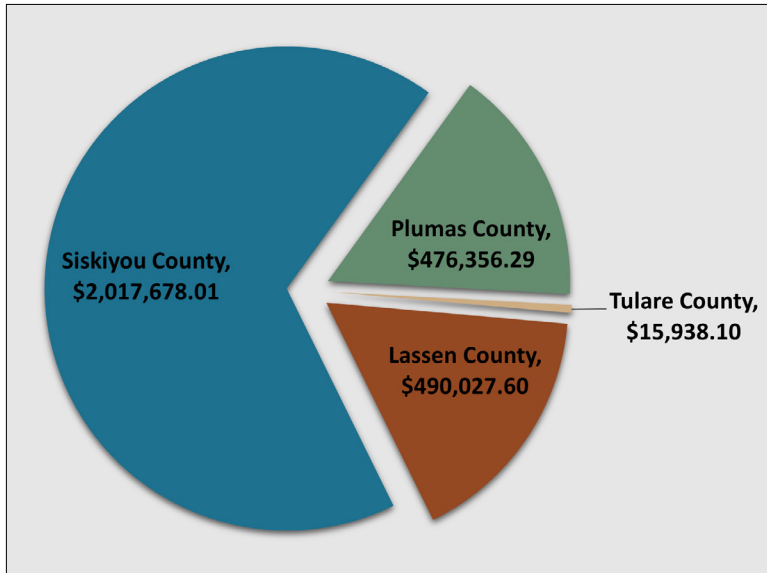
In Siskiyou County, a total of 62 grants worth \$2,017,678.01 (67.3% of the \$3 million funds) were awarded to producers (Figure 3):

- Prong 1 - 17 grants
- Prong 2 - 36 grants
- Prong 3 - 9 grants

In Lassen County, a total of 23 grants worth \$490,027.60 (16.3% of all funds) were awarded to producers (Figure 3):

- Prong 1 - 5 grants
- Prong 2 - 8 grants
- Prong 3 - 10 grants

COMPENSATION BY PRONG AND COUNTY, CONT.



In Plumas County, a total of 23 grants worth \$476,356.29 (15.9% of all funds) were awarded to producers (Figure 3):

- Prong 1 - 4 grants
- Prong 2 - 11 grants
- Prong 3 - 8 grants

In Tulare County, one grant worth \$15,938.10 (0.5% of all funds) was awarded to a producer for Prong 2 (Figure 3).

Producers submitted grant applications based on their current and anticipated needs to reduce wolf-livestock conflict (Prong 2) and eligibility for Prongs 1 and 3 (Figure 4).

FIGURE 3. Compensation awarded by county.

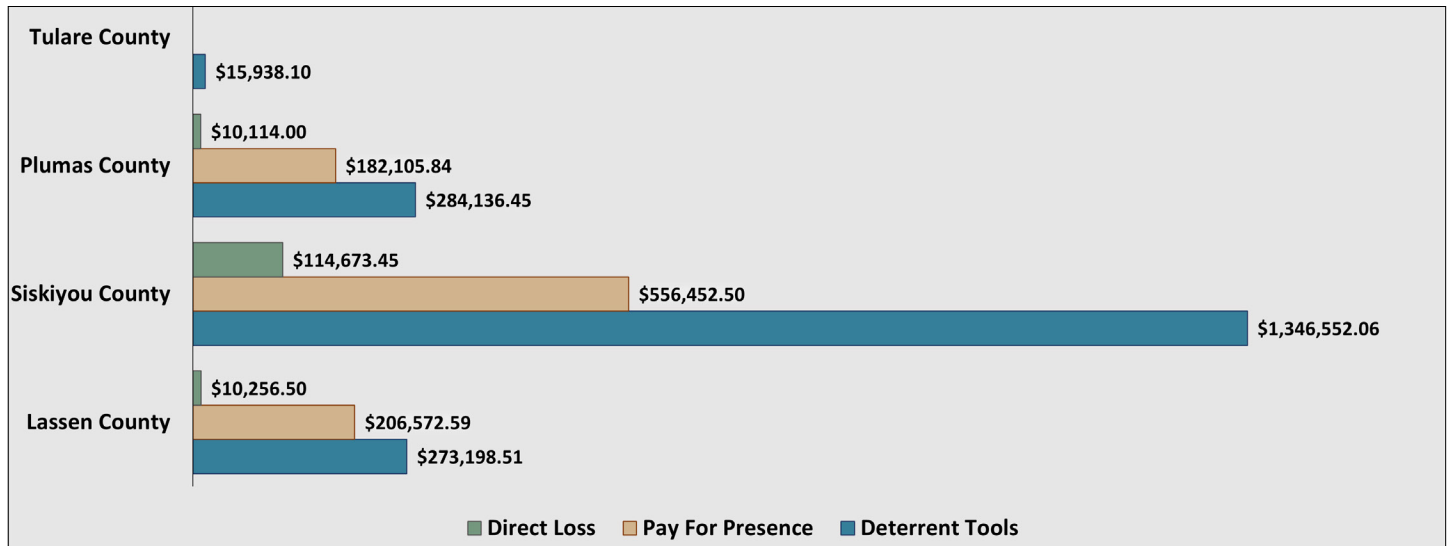


FIGURE 4. Total compensation by prong for each county.

COMPENSATION BY WOLF PACK AREA AND COUNTY

Producers affected by the Whaleback pack in Siskiyou County received 67.3% of all funds. These producers were awarded \$116,809.45 for Direct Loss (Prong 1); \$1,346,552.06 for Nonlethal Deterrents (Prong 2); \$556,452.50 for Pay for Presence (Prong 3) (Figure 5).

Producers affected by the Lassen pack in Lassen and Plumas counties received 28.2% of all funds. These producers were awarded \$15,724.00 for Prong 1; \$464,653.53 for Prong 2; and \$365,686.70 for Prong 3 (Figure 5).

Producers affected by other wolf packs received just under 5% of all grant funds (4.5%). Producers affected by the Harvey pack in Lassen and Shasta County were awarded \$1,600.00 for Prong 1; \$42,496.88 for Prong 2; and \$22,991.73 for Prong 3. Producers affected by the Beckwourth pack in Plumas and Sierra counties, and the Yowlumni pack in Tulare County, used 100% of their funds for Prong 2. All grants awarded to producers affected by the Beckwourth pack in Plumas and Sierra counties, and the Yowlumni pack in Tulare County, were for Prong 2; all grants awarded to producers affected by the Beyem Seyo pack in Plumas County were for Prong 1 (Figure 5).

COMPENSATION BY WOLF PACK AREA AND COUNTY, CONT.

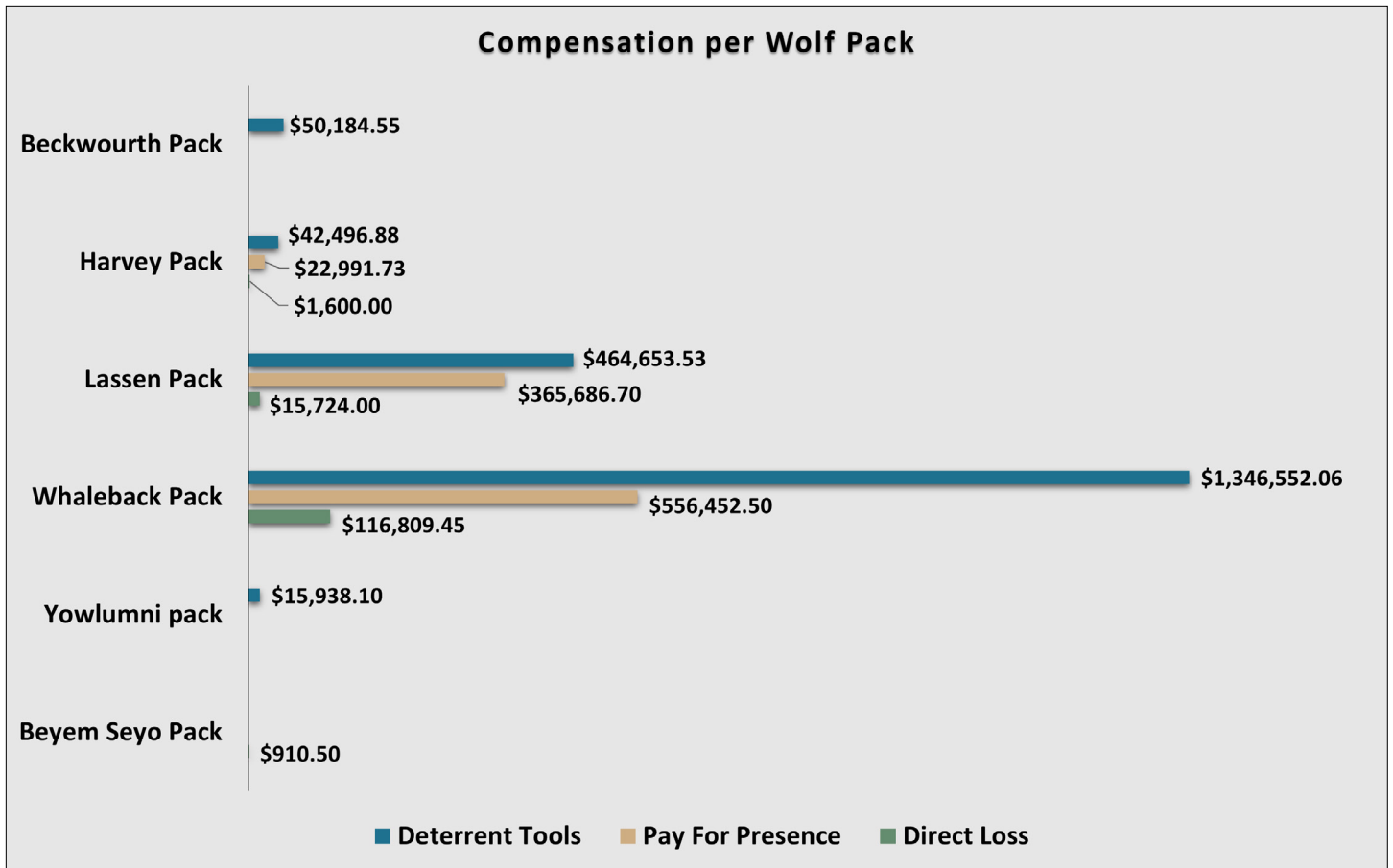


FIGURE 5. Total compensation awarded by known wolf pack areas in California.

During the pilot program period, substantially more confirmed and probable wolf-livestock depredation events occurred in Siskiyou County than any other county in California (Figure 6): 57 wolf depredations in Siskiyou County, 10 wolf depredations in Lassen County, and one wolf depredation in Plumas County.

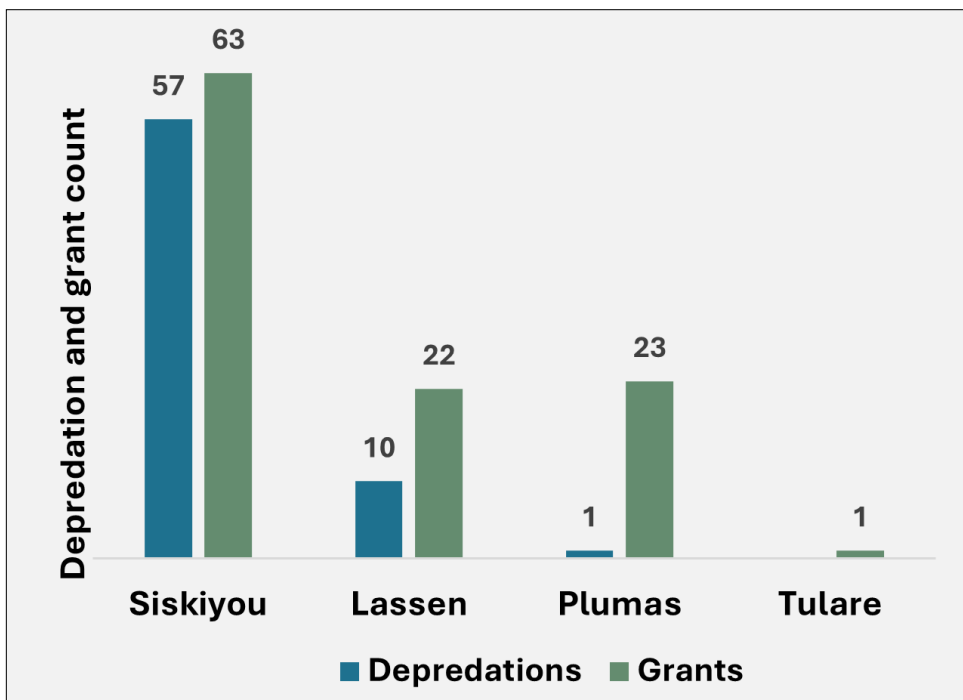


FIGURE 6. Wolf-livestock depredations (confirmed probable during Sept. 23, 2021 - Feb. 29, 2024) and total grants by county.