

Results of Camera Studies and Observations in 2020 & 2021

Ed LaRue, Jr., M.S.

Circle Mountain Biological Consultants, Inc.

P.O. Box 3197, Wrightwood, CA 92397

ed.larue@verizon.net

Cell: (760) 964-0012



Olancha 2021, 1 grid, 5 days = 3 "adult" MGS

4 trap or camera sites with MGS

5 incidental sightings of MGS

7 trap or camera sites without MGS

Lyons 2021, 34 cameras, April 30-June 1 = 4,576 MGS on 2 of 27 cameras (so far)

15 cameras, April 23-May 30 = 1,048 images on 12 of 15 cameras

Lyons 2020, 1 grid, 3 days, 100 traps = 1 adult MGS

Kudu 2020, 3 grids, 45 days, 300 traps = 2 juvenile MGS

Incidental adult MGS on 6/8/2020 (GW)

Incidental juvenile MGS on 5/30/2020 (EL)

Incidental adult MGS on 4/18/2020 (GW)

Incidental adult MGS on 2/12/2020 (PS)

Incidental adult MGS on 6/19/2020 (GW)

Lyons 2021, 25 cameras, April 30-June 1 = 0 images

Phacelia 2021, 1 grid, 5 days, 100 traps (LC)

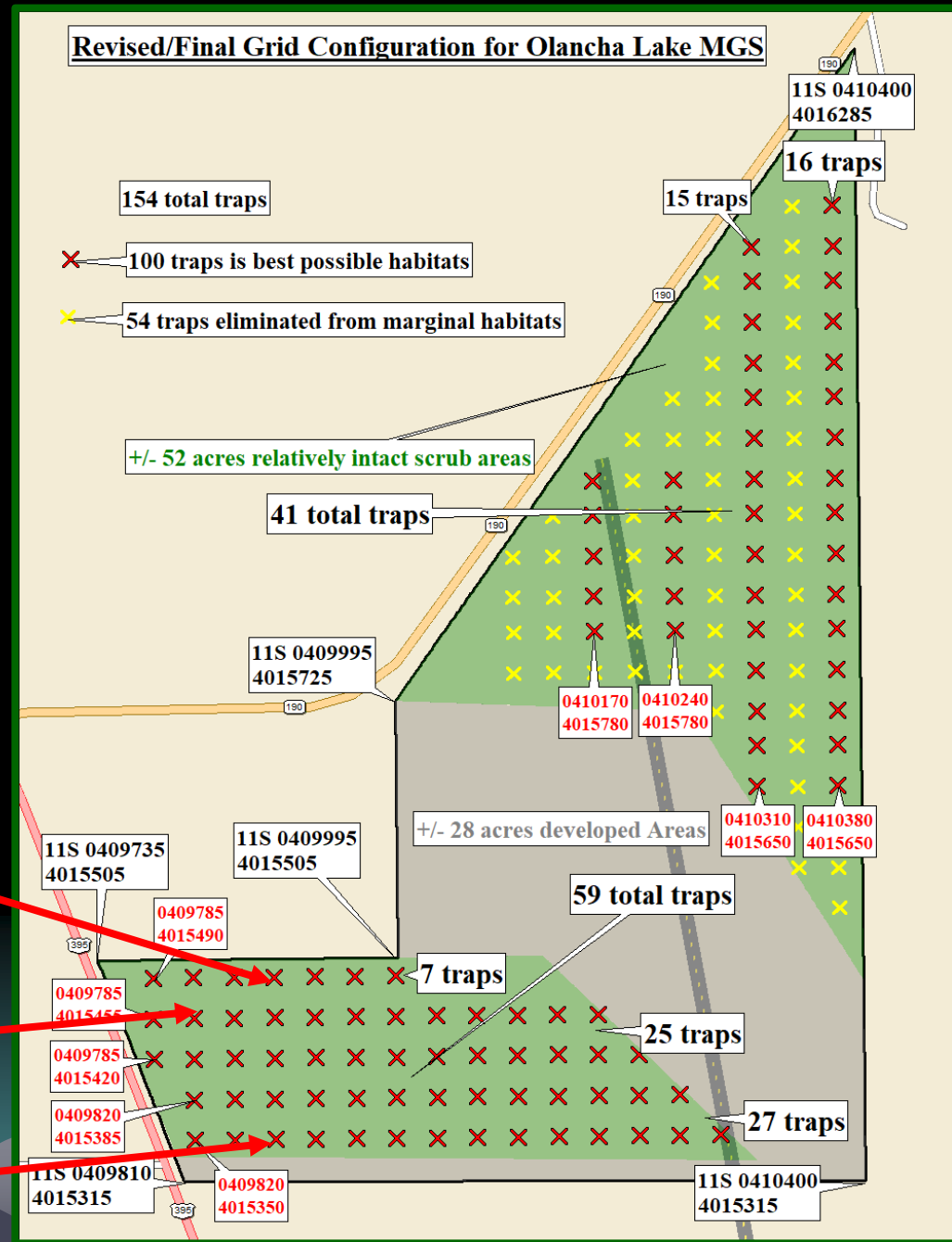
Lyons 2020, 24 cameras, April 30-May 30 = 0 images

MDLT Palisades 2020, 1 grid, 5 days, 100 traps = 0 MGS

Palmdale 2021, 1 grid, 15 days, 100 traps = 0 MGS

Map produced by Ed LaRue on 10/18/2021

Olancha Protocol Grid – 2021



Olancha Protocol Grid – 2021

Weird or what?



83 g female



67 g female



78 g female

**Captured on March 25 & 26, 2021
... should weigh 110+ grams?**



Stump the Meister?

Adult or juvenile?

What about 180 g?

Tissue collected

Lyons Fort Irwin - 2021

Mohave Ground Squirrel Camera Grid - 1 to 34

1=26	5=30	10=35	15=40	20=45
0503975 3891610	0504300 3891610	0504620 3891610	0504940 3891610	0505260 3891610
2=27	6=31	11=36	16=41	21=46
0503975 3891300	0504300 3891300	0504620 3891300	0504940 3891300	0505260 3891300
3=28	7=32	12=37	17=42	22=47
0503975 3890970	0504300 3890970	0504620 3890970	0504940 3890970	0505260 3890970
4=29	8=33	13=38	18=43	23=48
0503975 3890650	0504300 3890650	0504620 3890650	0504940 3890650	0505260 3890650
	9=34	14=39	19=44	24=49
	0504300 3890330	0504620.0 3890330	0504940 3890330	0505260 3890330



1 of 5 double MGS images

4,225 MGS images

348 MGS images

25=50	28=53	32=57	
0505580 3890000	0505900 3890000	0506550 3890000	
26=51	29=54	33=58	
0505580 3889680	0505900 3889680	0506550 3889680	
27=52	30=55	31=56	34=59
0505580 3889360	0505900 3889360	0506230 3889360	0506550 3889360

Out for the Count?



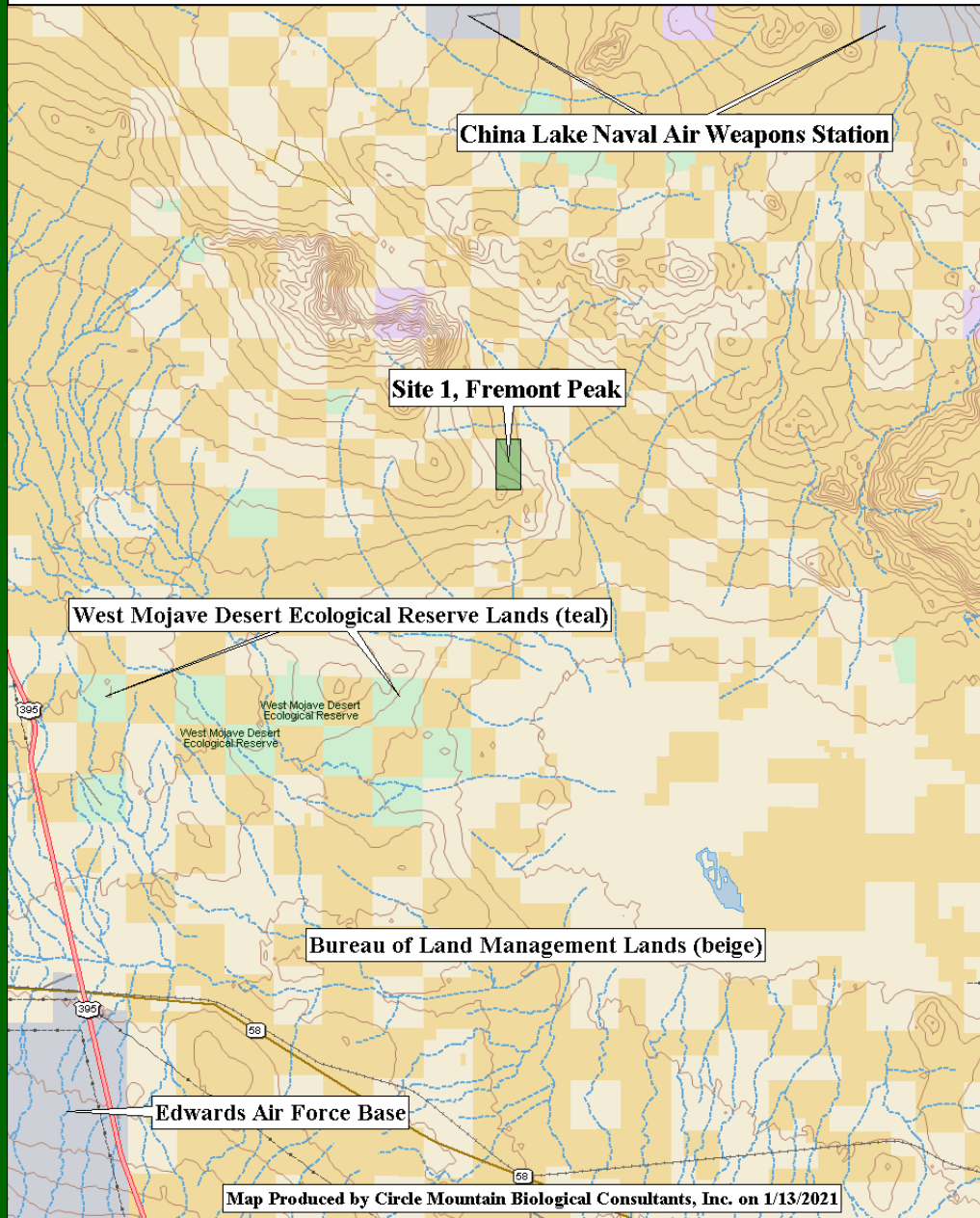
Lyons Fort Irwin – So many bobcats!



MGS at risk?



Figure 1. Mojave Desert Tortoise Conservation Bank: Vicinity Map



Lyons – Fremont Peak 2020

**Rejected by
CDFW until
proof of MGS
ascertained...**

Lyons – Fremont Peak 2020

Figure 6. Trapping Grid and Motion Camera Locations in 2020

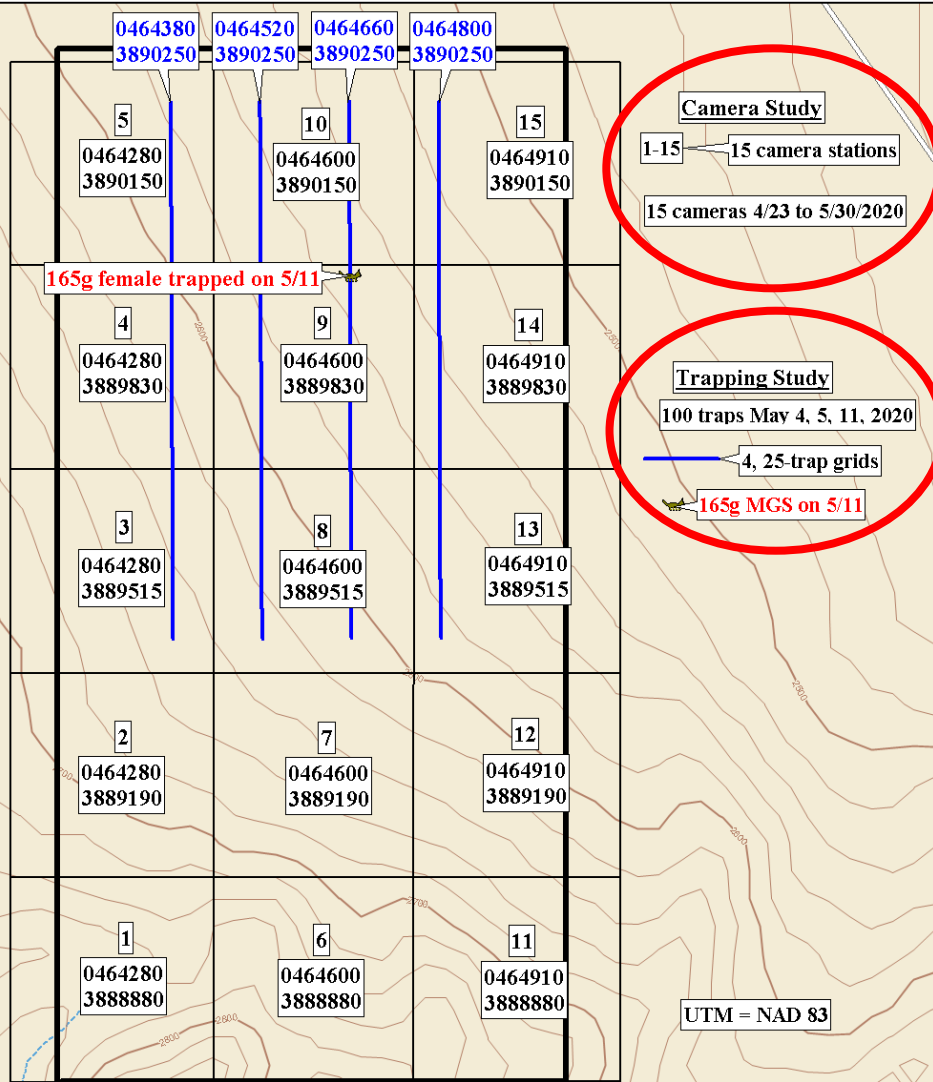
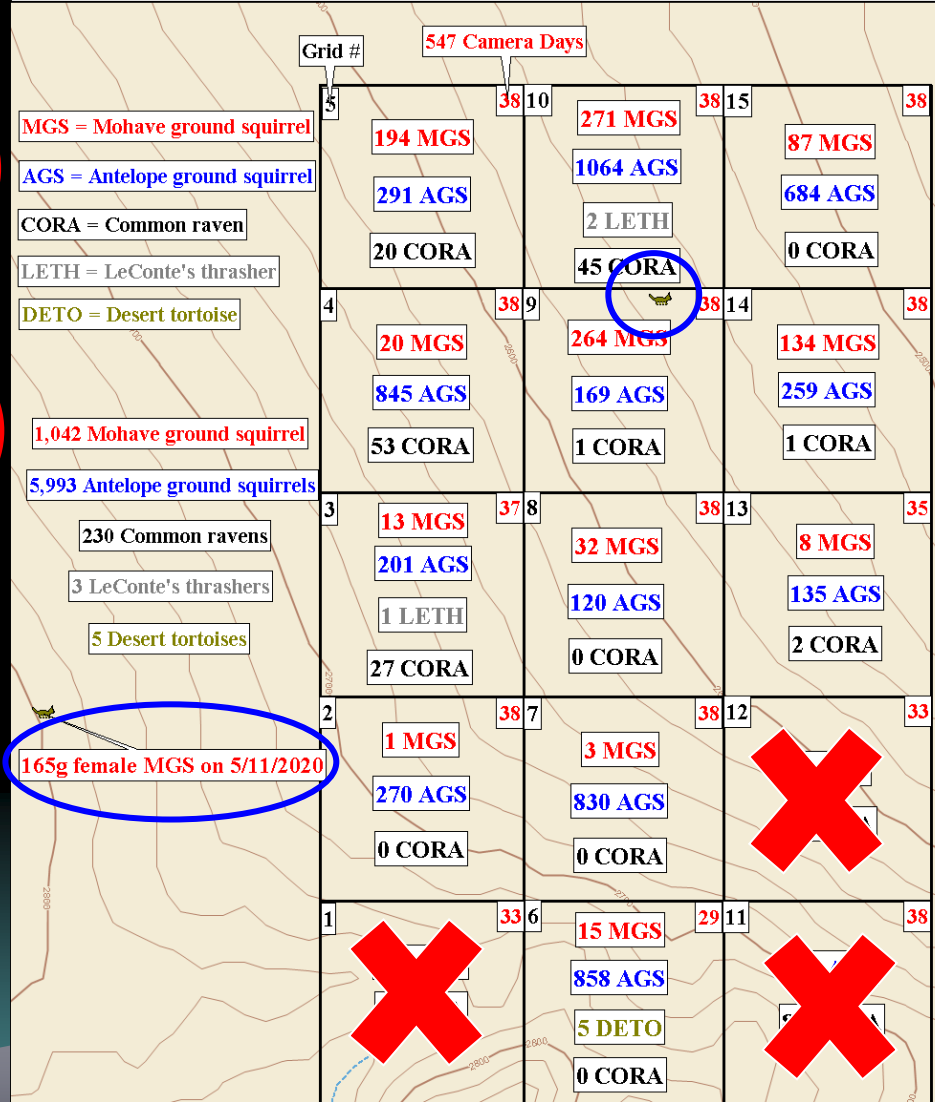


Figure 7. Partial Results of Camera Trapping in 2020



Spotted Skunk



Kudu - 2020

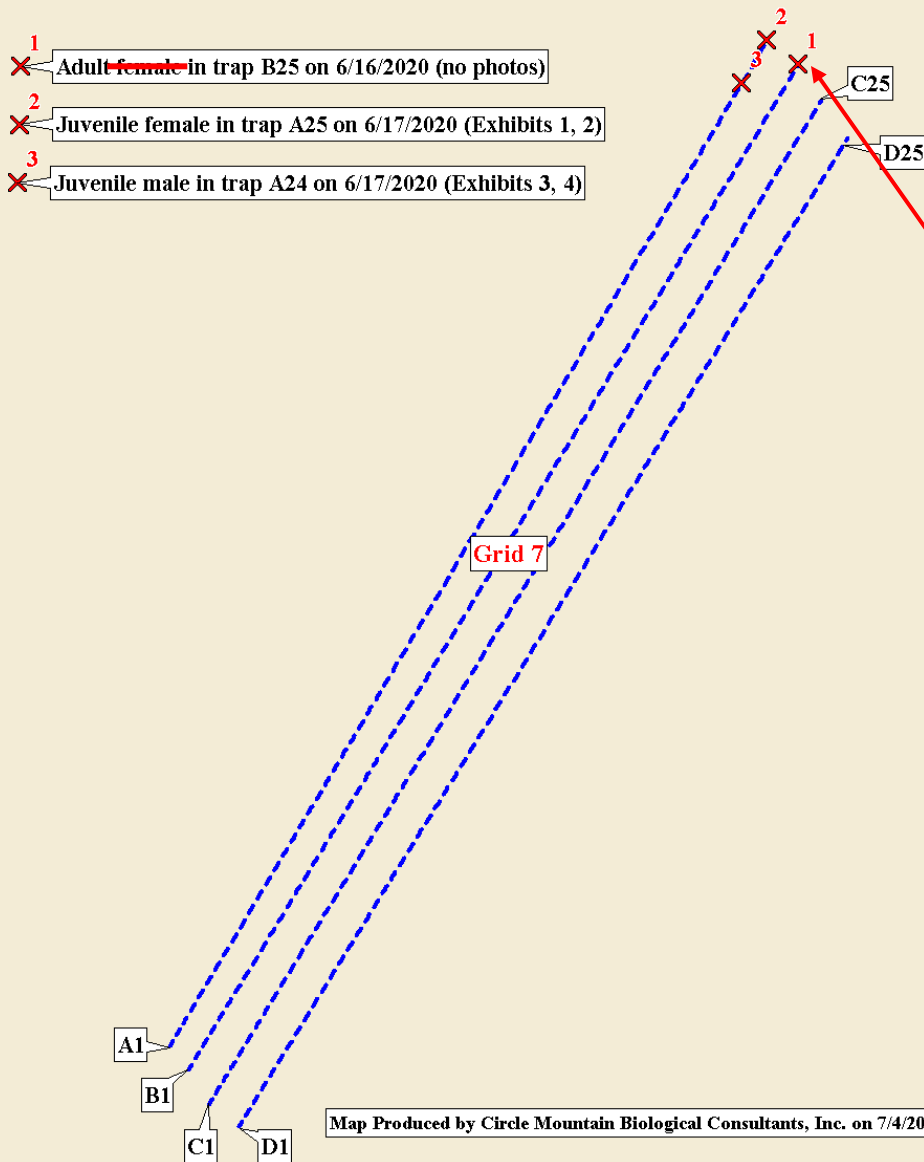


**Juvenile female
on 6/17/20 in A25**



**Juvenile male on
6/17/20 in A24**

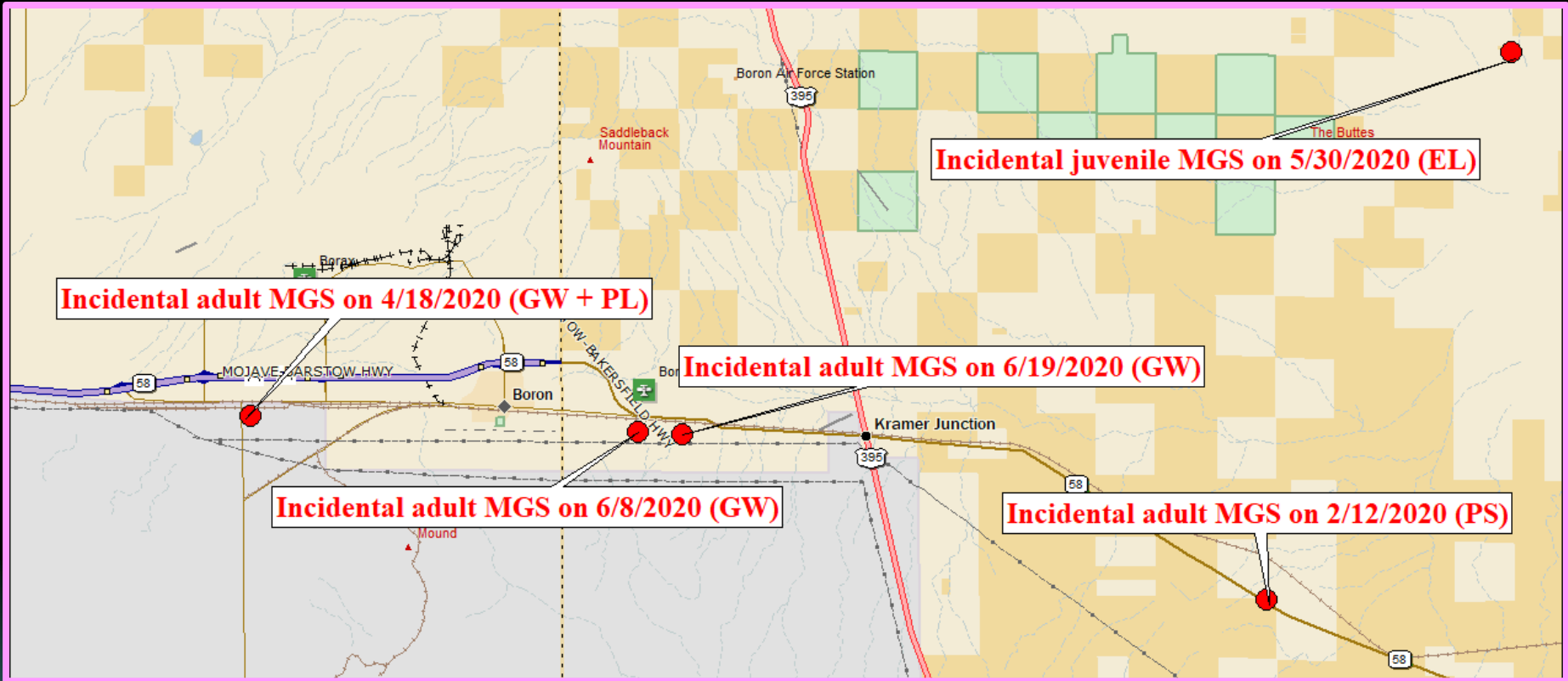
Figure 3. Locations of Three Mohave Ground Squirrels in June 2020



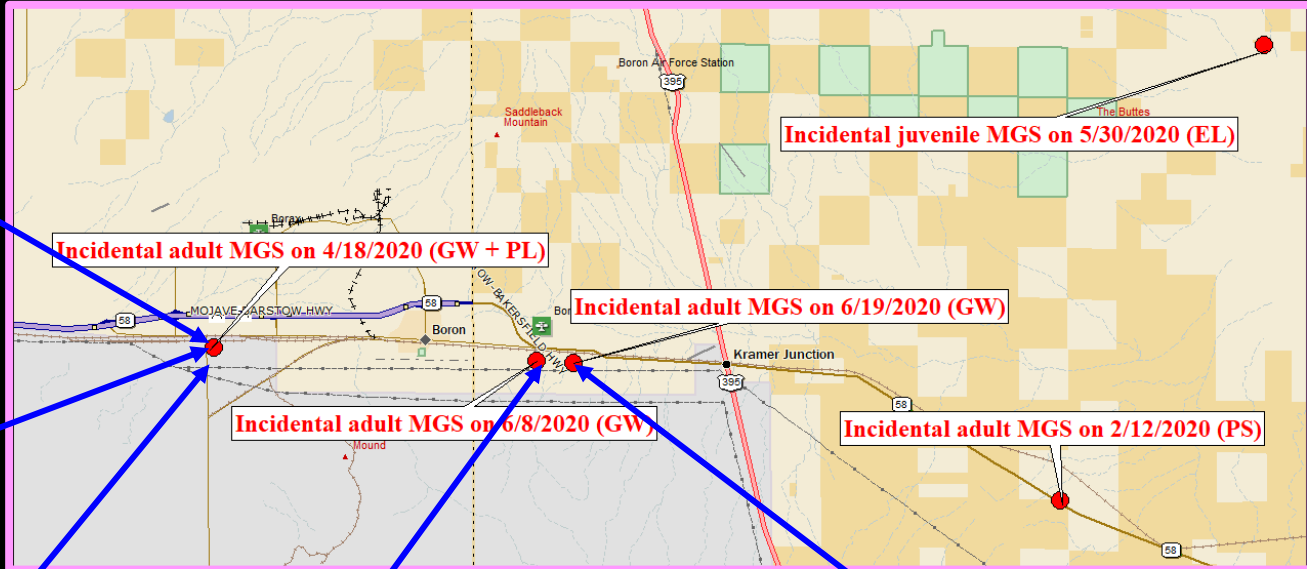
Family Group? Dispersers?

A third, likely adult was captured and released without processing (B25 on 6/16). Was this a family group? Phil thinks dispersal from east of Neuralia (2.7 miles east). Should we be taking tissue from all MGS?

Incidental Observations



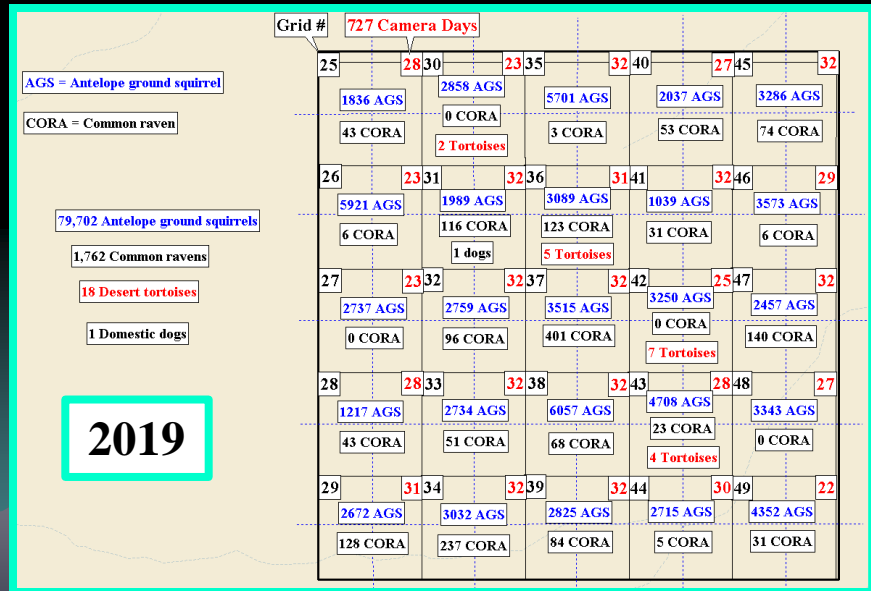
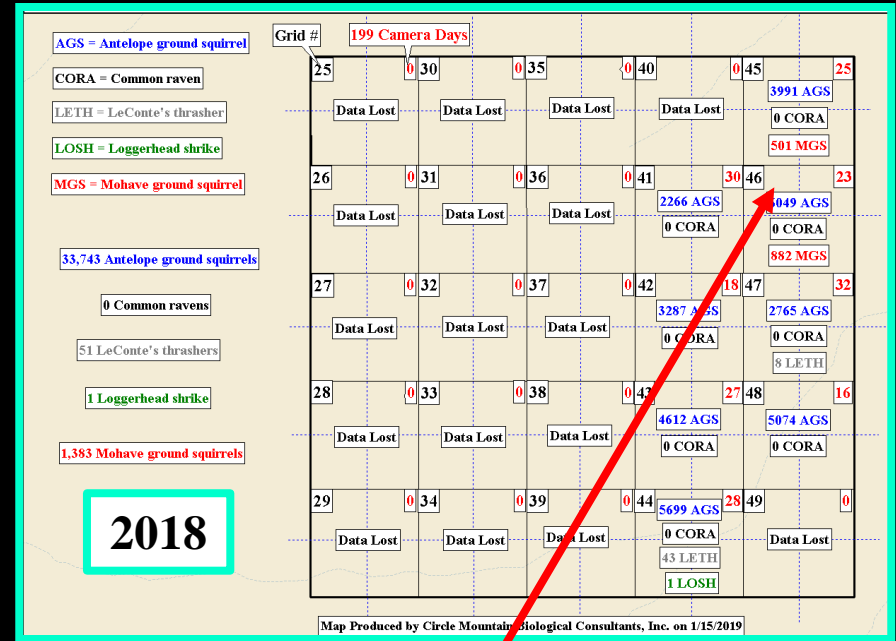
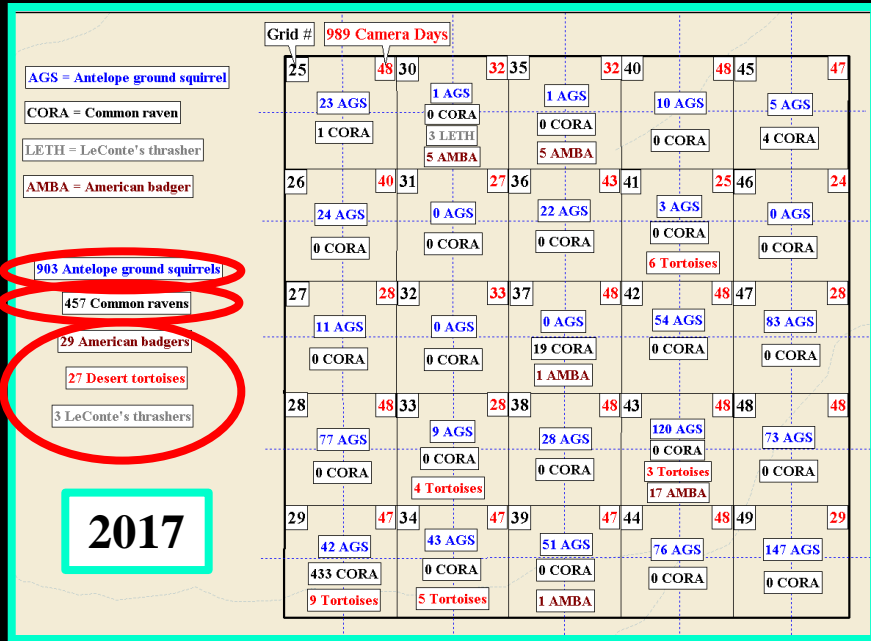
Incidental Observations



Incidental Observations – MGS later trapped by Phil



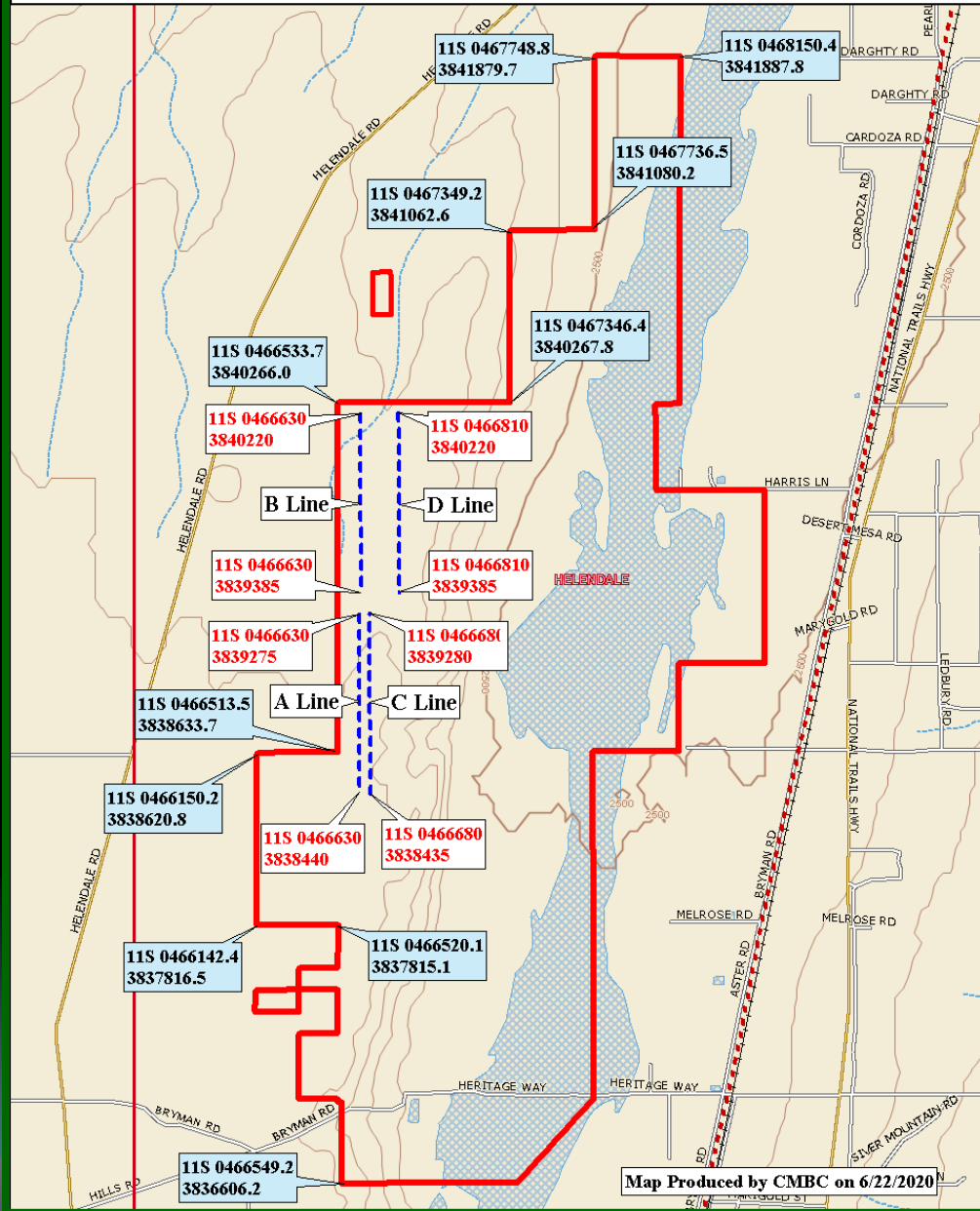
Lyons Site 2: 2017-2021



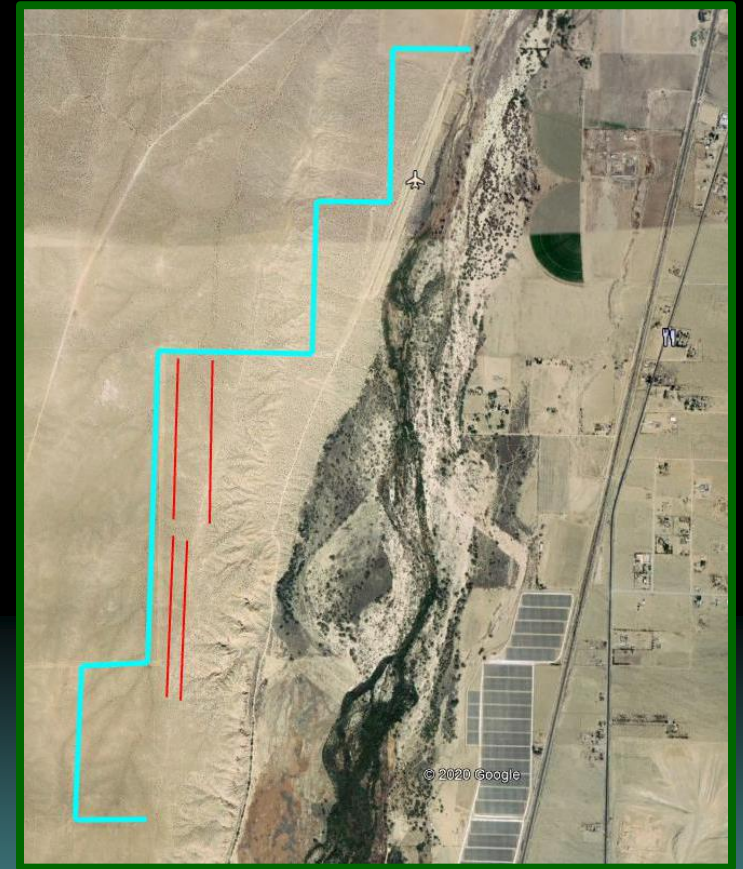
1,383 MGS images at 2 cameras in 2018 – dry year

No MGS images in 2021

Figure 1. Locations of Mohave Ground Squirrel Grids in June 2020



Palisades Ranch: MDLT - 2020



Phacelia Wildflower Sanctuary: Lehong Chow, 2021



Special Status Species Observed at Phacelia Sanctuary in May 2014

