

1

Marine Life Protection Act Initiative




Overview of Round 2 North Coast Draft Recommendations for Special Closures

Presentation to the MLPA Blue Ribbon Task Force
July 21, 2010 • Fort Bragg, California

Dominique Monié, Marine Planner • California MLPA Initiative

2

Special Closures



- Designated by the California Fish and Game Commission
- May offer additional, geographically-specific protection to marine species such as seabirds and marine mammals
- May coincide with, overlap, or be separate from proposed marine protected areas (MPAs)
- May be designated as seasonal or year-round
- Typically designated as no-access areas



Previous Guidance

- California Department of Fish and Game recommends that any no-access regulations be proposed as special closures
- MLPA Blue Ribbon Task Force guidance to include recommendations for special closures sparingly
- Use distance-from-shore boundary, generally 300 or 1000 feet
- Only proposed if other state and federal regulations inadequate to provide protections to marine species
- Only be used to address water-based concerns, such as boat disturbance



Special Closures Work Group

- Special closures work group made up of MLPA North Coast Regional Stakeholder Group (NCRSG) members and interested members of the public
- Work group supported by MLPA Initiative staff
- Met twice via conference call and once in-person
- Developed 10 special closure options for NCRSG to consider
 - 2 special closures have marine mammal protection focus and 8 have a marine bird focus
 - All special closures suggested as year round closures
 - All special closures suggested as 300 foot no-entry zones



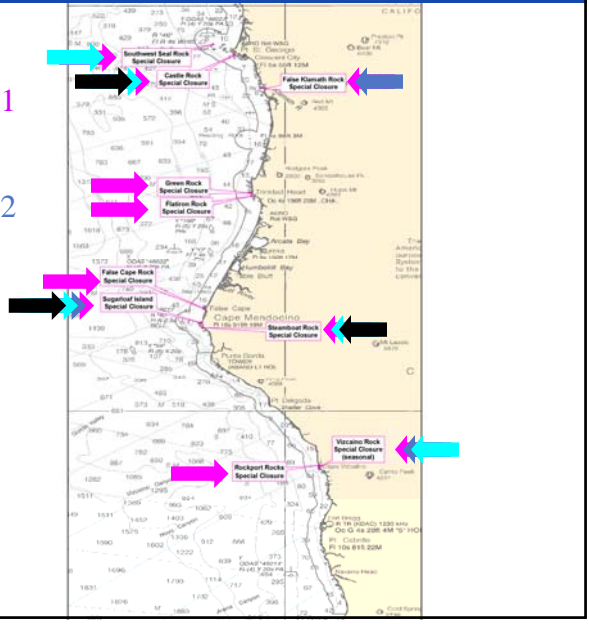
MPA Proposals and Special Closures

- Each draft MPA proposal has associated set of proposed special closures
- No special closures in Proposal 0 (existing MPAs)
- Ruby addressed special closures during the May meeting and work session
 - Ruby 1 includes all 10 options
 - Ruby 2 includes 3 options
- Sapphire addressed in a conference call following the May meeting and work session
 - Sapphire 1 includes 5 options
 - Sapphire 2 includes 3 options
- Some modifications were made to recommendations from the work group



Draft Recommended Special Closures

- Ruby Draft MPA Proposal 1 (Ruby 1)
- Ruby Draft MPA Proposal 2 (Ruby 2)
- Sapphire Draft MPA Proposal 1 (Sapphire 1)
- Sapphire Draft MPA Proposal 2 (Sapphire 2)





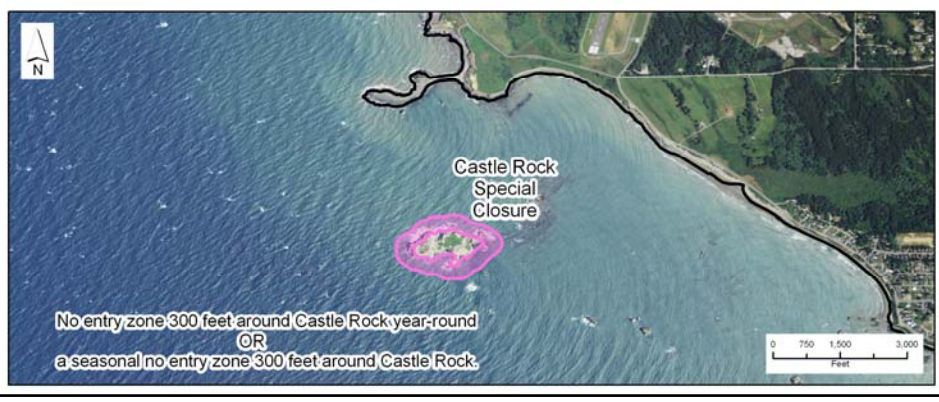
Draft Special Closure: SW Seal Rock

- Included in Ruby 1 and Sapphire 1
- 300 foot, year-round closure
- Steller sea lion rookery



Draft Special Closure: Castle Rock

- Included in Ruby 1 and Sapphire 1 as a 300 foot, year-round closure
- Included in Sapphire 2 as a 300 foot, seasonal closure (dates not specified)





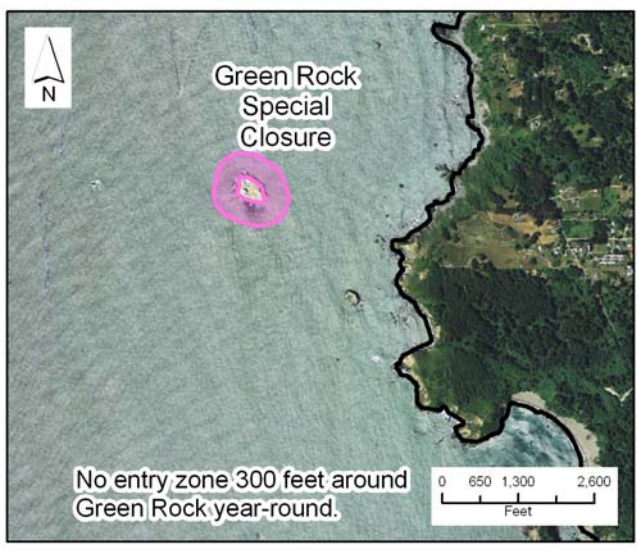
Draft Special Closure: False Klamath Rock

- Included in Ruby 1 and Ruby 2
- 300 foot, year-round closure



Draft Special Closure: Green Rock

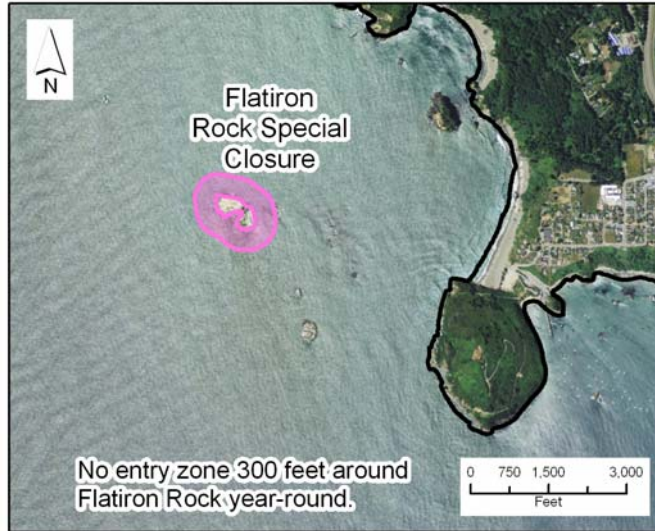
- Included in Ruby 1
- 300 foot, year-round closure





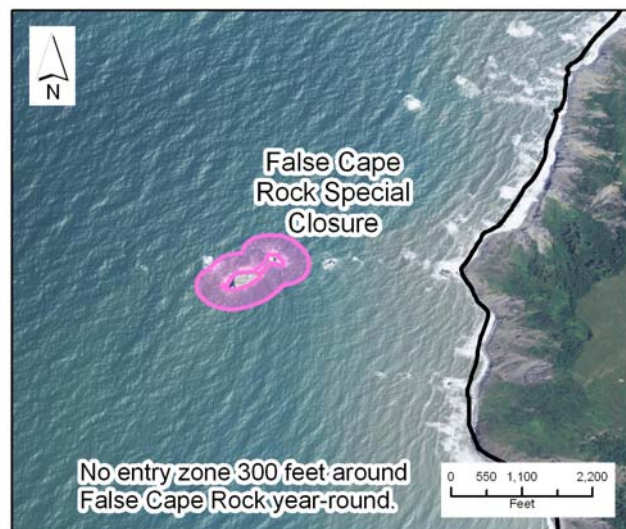
Draft Special Closure: Flatiron Rock

- Included in Ruby 1
- 300 foot, year-round closure



Draft Special Closure: False Cape Rock

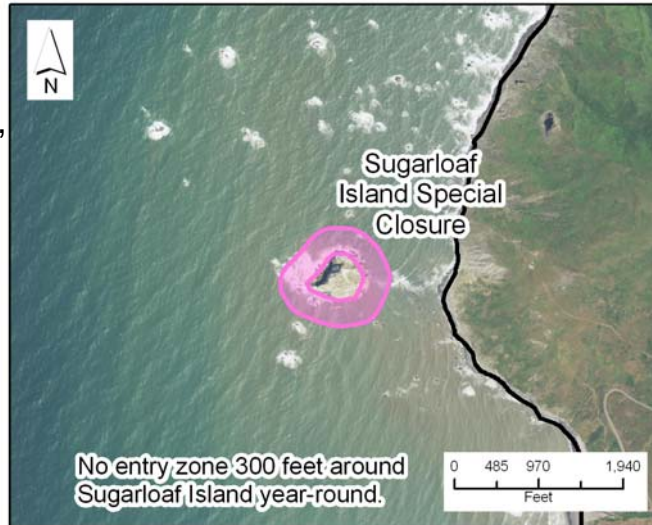
- Included in Ruby 1
- 300 foot, year-round closure





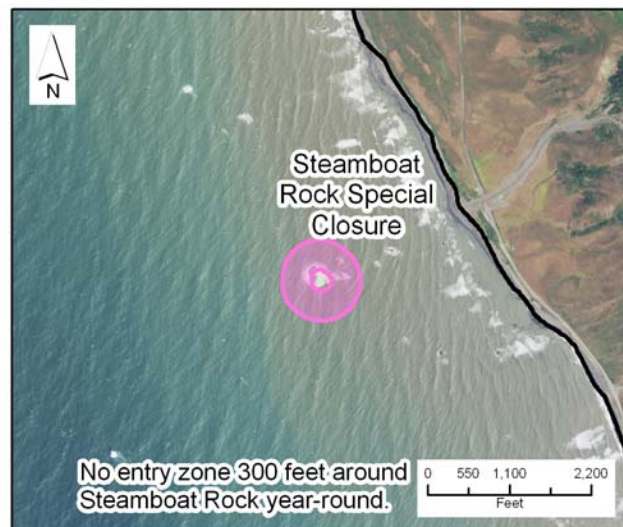
Draft Special Closure: Sugarloaf Island

- Included in Ruby 1, Ruby 2, Sapphire 1 and Sapphire 2
- 300 foot, year-round closure
- Steller sea lion rookery



Draft Special Closure: Steamboat Rock

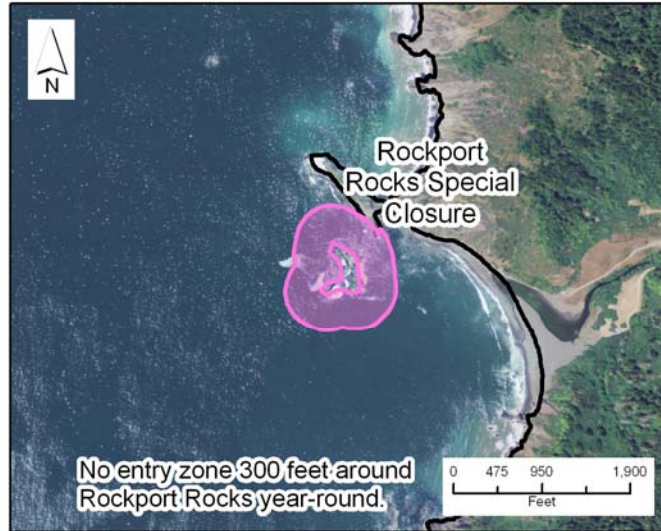
- Included in Ruby 1, Sapphire 1 and Sapphire 2
- 300 foot, year-round closure





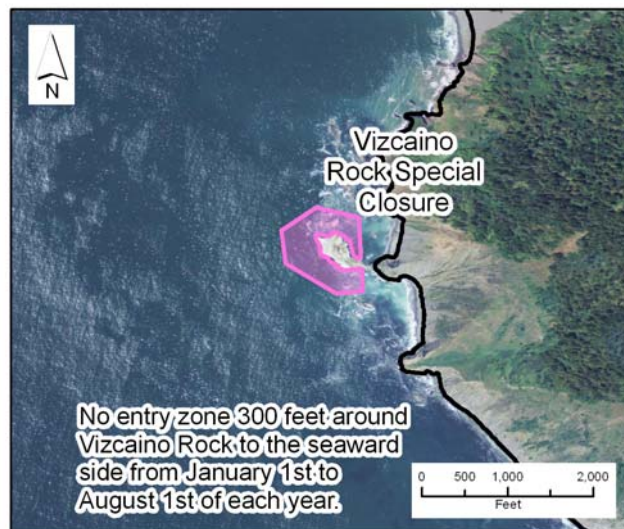
Draft Special Closure: Rockport Rocks

- Included in Ruby 1
- 300 foot, year-round closure



Draft Special Closure: Vizcaino

- Included in Ruby 1, Ruby 2 and Sapphire 1
- 300 foot, seasonal closure from Jan. 1 to Aug. 1





Next Steps

- Potential BRTF comment and guidance on range of draft recommended special closures
- Special closures work group to further refine special closure options based on BRTF guidance and Round 2 feedback
- Work group presents recommended special closure(s) to the NCRSG
- NCRSG considers special closures to accompany Round 3 NCRSG MPA proposal(s)