



CCR 679 Wildlife Rehabilitation

Attachment 10

Compilation of Photographic Evidence
Meeting or Exceeding Current
Regulations.

California Department of Fish and Wildlife 2024

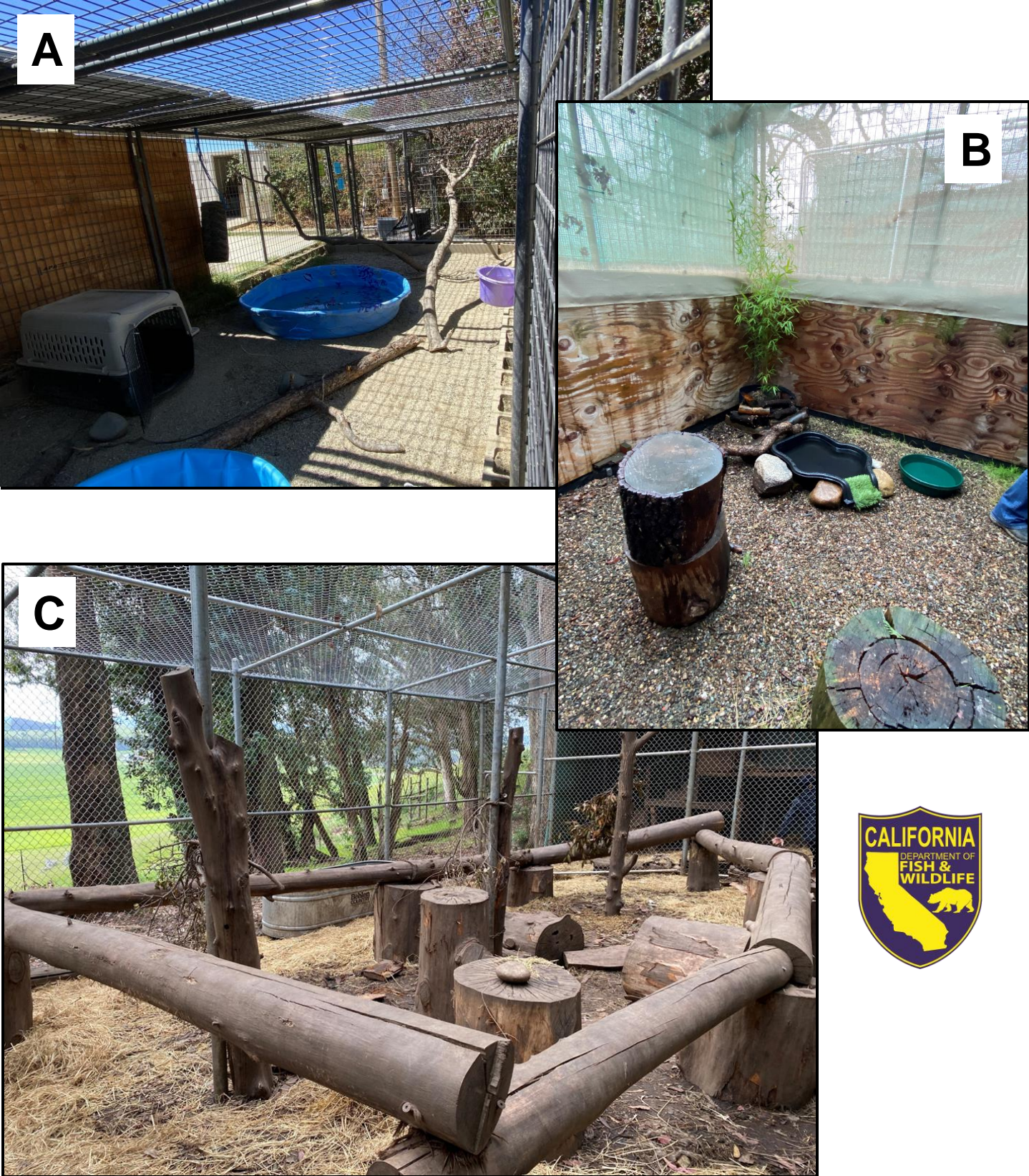


Figure 1. Demonstrates enrichment for raccoons (A: Gold County Wildlife Rescue), raptor (B: Tri County Wildlife Care) and black bear cubs (C: Sonoma County Wildlife Rescue).



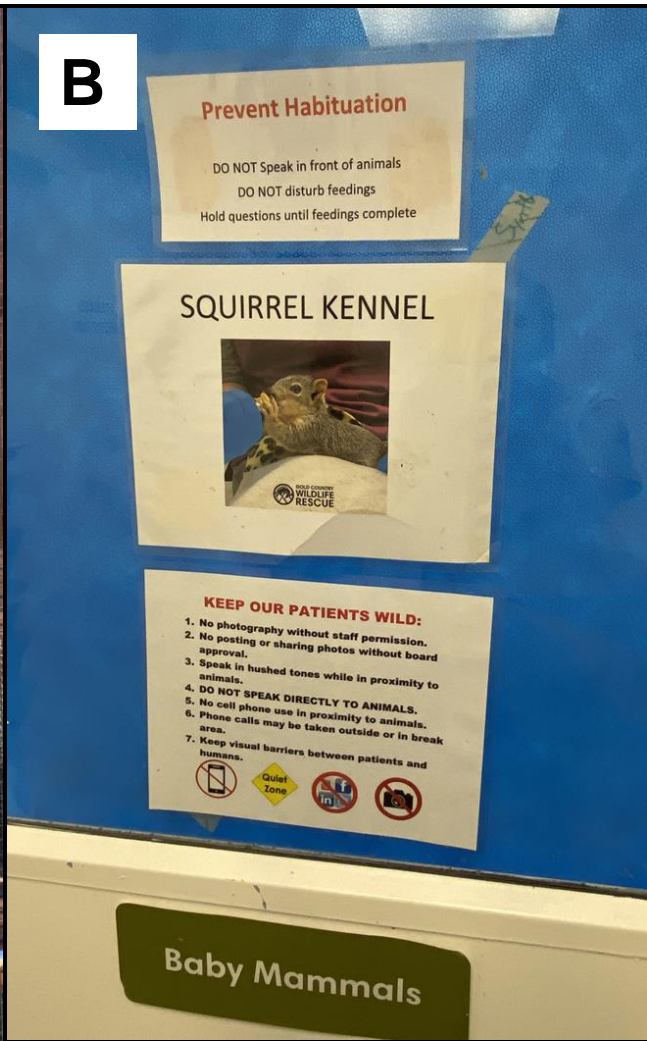


Figure 2. Images show properly labeled enclosures at Gold Country Wildlife Rescue: skunk (A), neonate squirrels (B), and triage patients (C).



Figure 3. Images showing shade cloth as a visual barrier to prevent an animal from becoming habituated to people: deer fawns (A: Kindred Spirit Fawn Rescue) and coyotes (B: Sonoma County Wildlife Rescue).

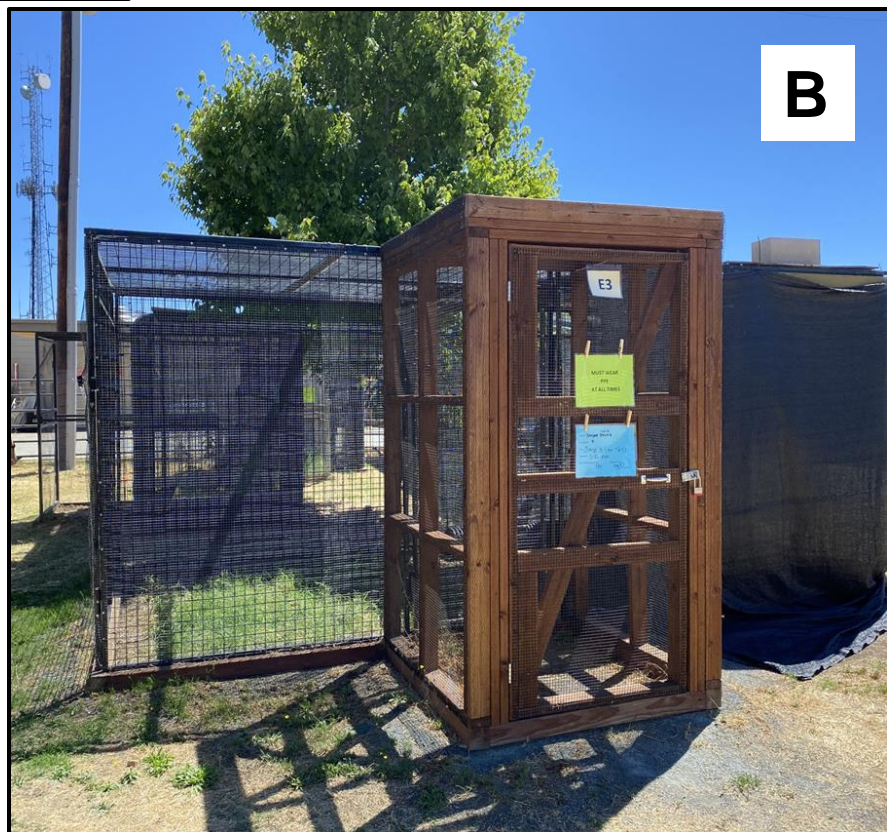


Figure 4. Images showing an enclosure double door entry: hummingbird (A: Orangewood Wildlife) and skunk (B: Gold Country Wildlife Recue).



Figure 5. Appropriate enclosure materials – hardware cloth (A), shade cloth (B)



Figure 6. Security measures: Outdoor small mammal (A: Gold Country Wildlife Rescue); black bear access includes double lock, window for viewing, signage (B: Lake Tahoe Wildlife Care); large carnivore hospital enclosure locked viewing window and signage (C: Project Wildlife Ramona)

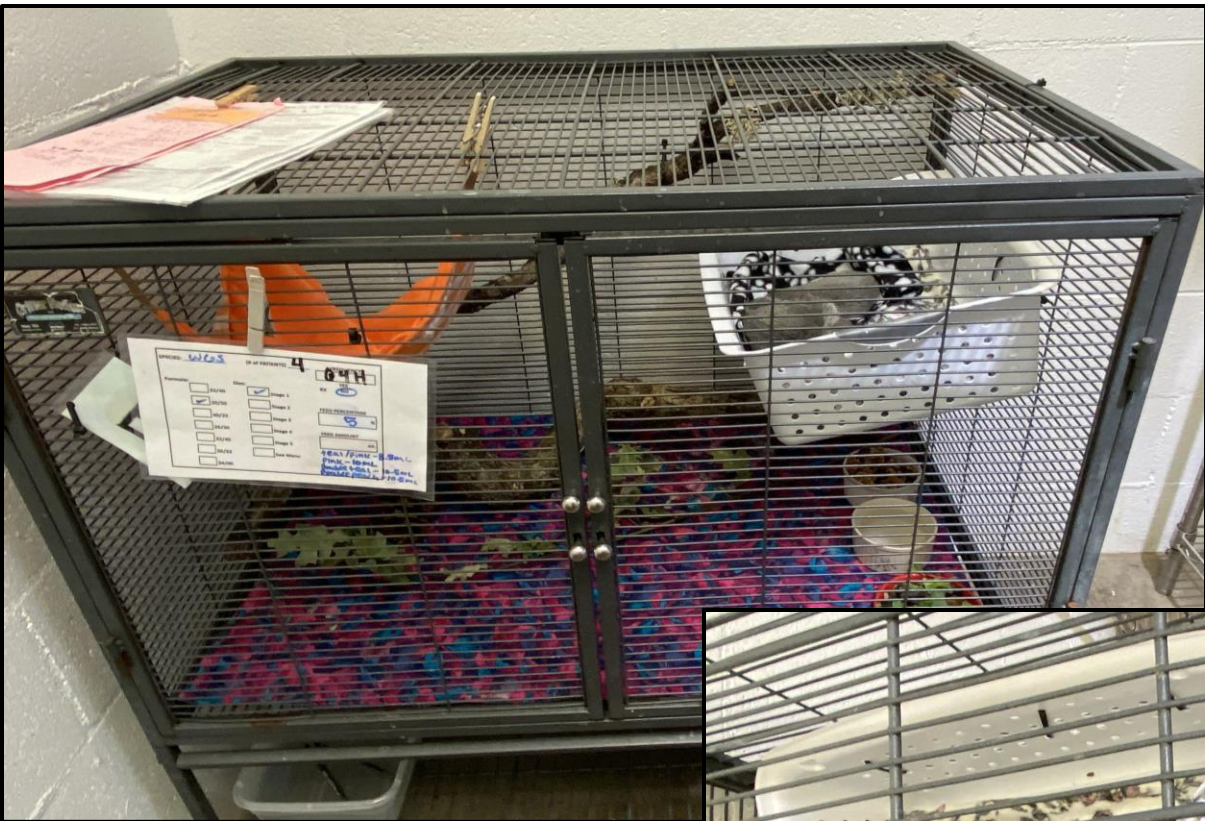


Figure 7. Gold Country Wildlife Rescue neonate squirrel enclosure, demonstrates proper caging, artificial nests, proper bedding, and enrichment. Inset photo is enlarged to show artificial nest.



A**B**

Figure 8. Clearly posted protocols in food prep (A) and enclosure set up area (B) for staff and volunteers at Gold Country Wildlife Rescue.

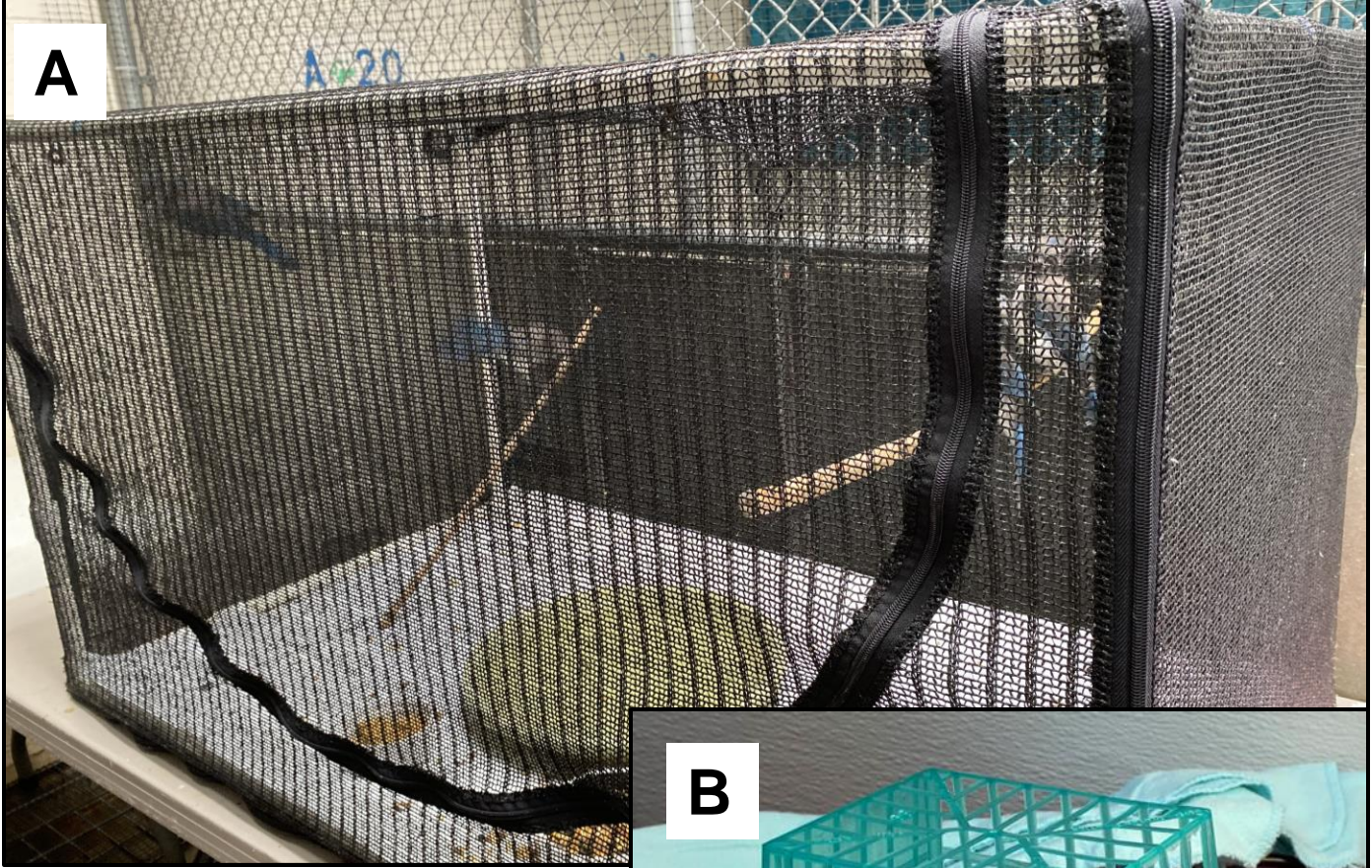
A**B**

Figure 9. Avian enclosure options: fledgling with perches and free feeding (A: Gold Country Wildlife Rescue) and nestling on heating pad in artificial nest that limits animal's ability to escape (B: Project Wildlife San Diego).



Figure 10. Fox enclosure enrichment: elevated platform, artificial grass/mat, and hide/shelter at Fresno Wildlife Rescue and Rehabilitation.



A

Figure 11. Outdoor flight aviaries allows for access to natural light patterns: raptors with arched roof and hide boxes (A: Coachella Valley Bird Center) and waterbirds with pool and proper substrates to protect sensitive feet (B: International Bird Rescue).



Attachment 10: 679 ISOR

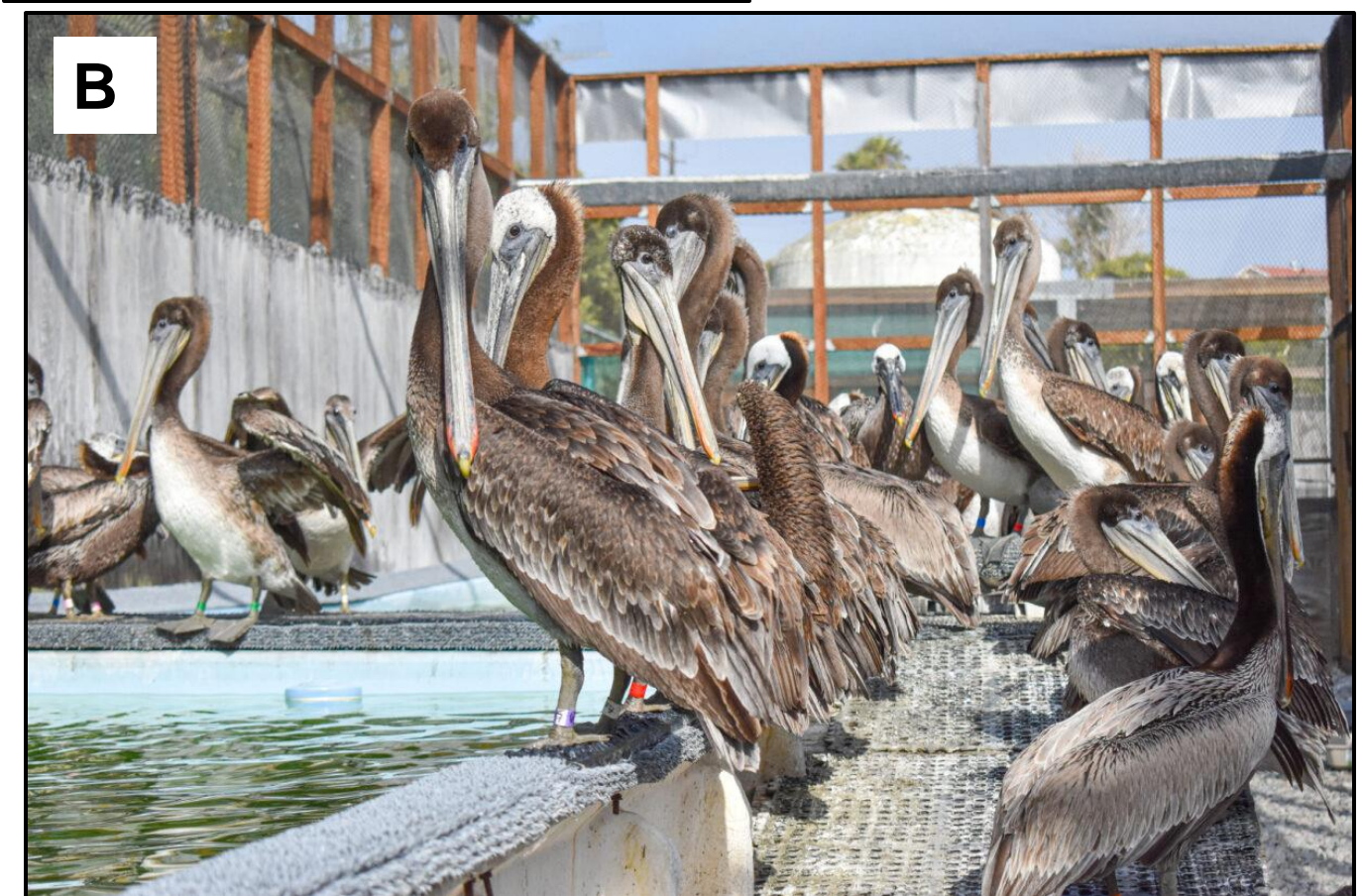
B

Figure 12. Proper PPE while handling wildlife: juvenile albinistic raccoon (A: Sierra Wildlife Rescue); oiled loon (B: International Bird Rescue); injured great horned owl (C: Project Wildlife San Diego).

Attachment 10: 679 ISOR

