



Northern California Fisheries Chart

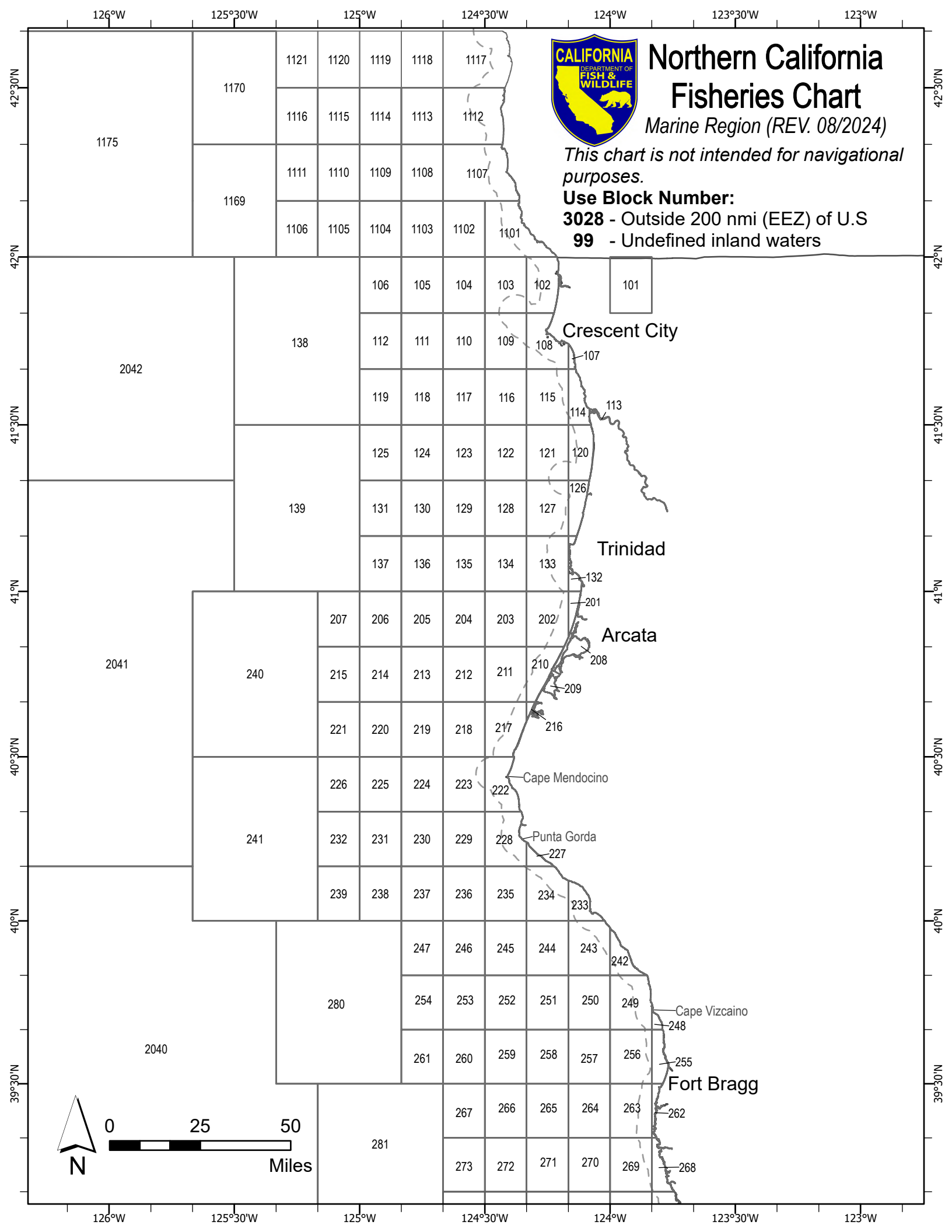
Marine Region (REV. 08/2024)

This chart is not intended for navigational purposes.

Use Block Number:

3028 - Outside 200 nmi (EEZ) of U.S

99 - Undefined inland waters



1170

1121 1120 1119 1118 1117

1116 1115 1114 1113 1112

1169

1111 1110 1109 1108 1107

1106 1105 1104 1103 1102 1101

106 105 104 103 102

101

Crescent City

138

112 111 110 109 108

2042

119 118 117 116 115

139

125 124 123 122 121 120

Trinidad

131 130 129 128 127

137 136 135 134 133

240

207 206 205 204 203 202

Arcata

2041

215 214 213 212 211 210

221 220 219 218 217

Cape Mendocino

241

226 225 224 223

Punta Gorda

232 231 230 229 228

239 238 237 236 235 234

242

280

247 246 245 244 243

Cape Vizcaino

254 253 252 251 250

Fort Bragg

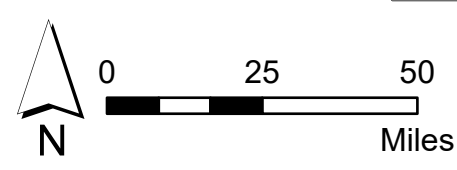
261 260 259 258 257 256

267 266 265 264 263

2040

273 272 271 270 269

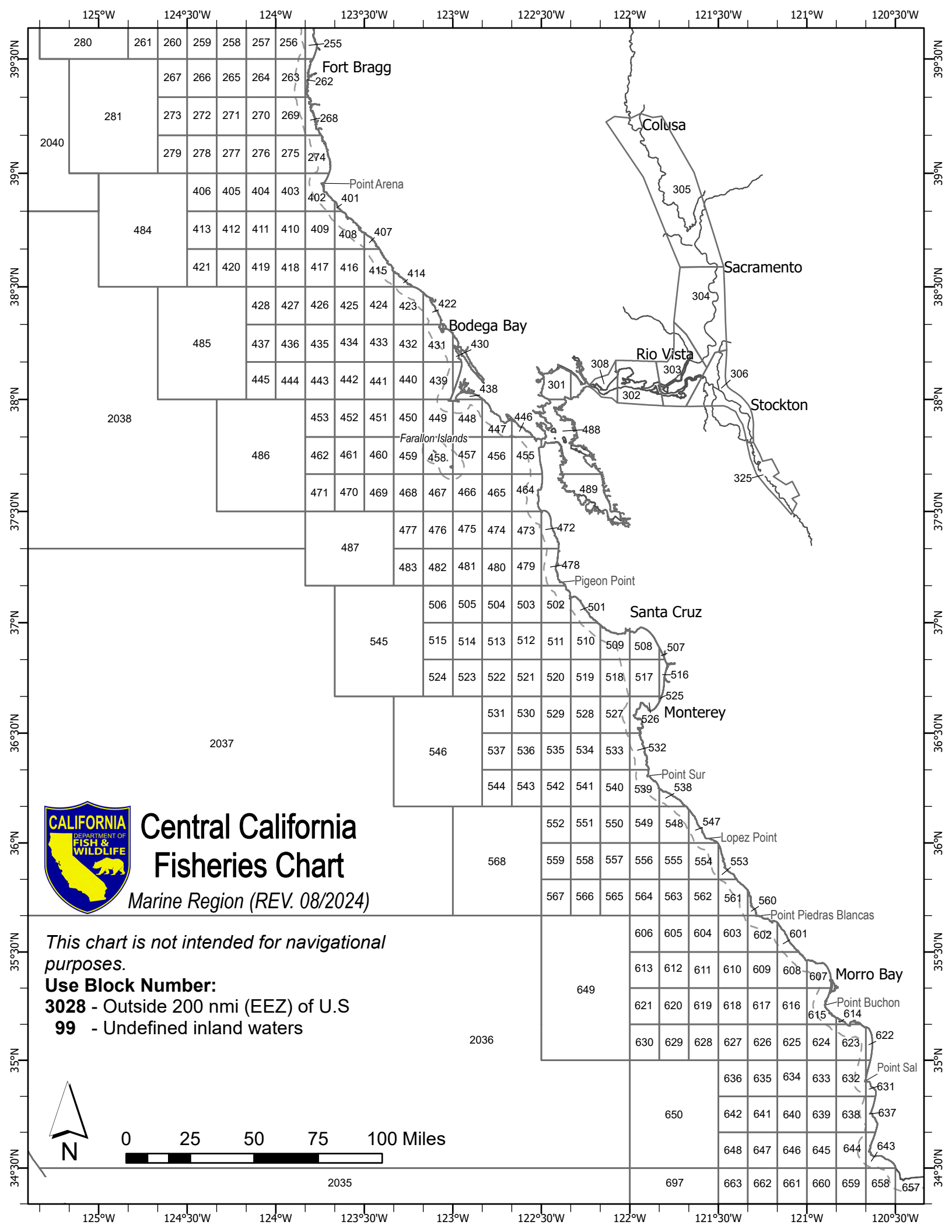
281



126°W 125°30'W 125°W 124°30'W 124°W 123°30'W 123°W

42°30'N 42°N 41°30'N 41°N 40°30'N 40°N 39°30'N

42°30'N 42°N 41°30'N 41°N 40°30'N 40°N 39°30'N



Central California Fisheries Chart

Marine Region (REV. 08/2024)

This chart is not intended for navigational purposes.

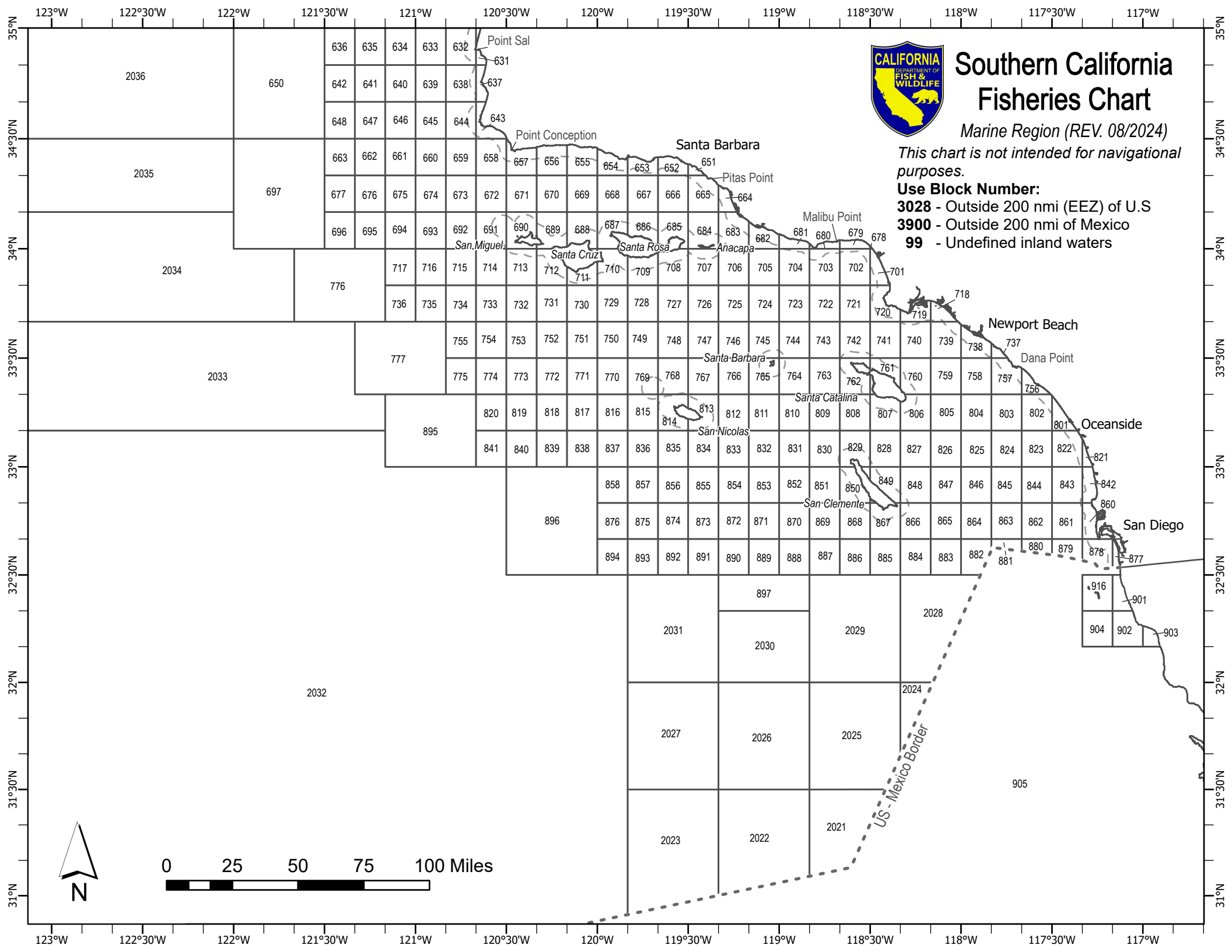
Use Block Number:

3028 - Outside 200 nmi (EEZ) of U.S

99 - Undefined inland waters



2035



Southern California Fisheries Chart

Marine Region (REV. 08/2024)

This chart is not intended for navigational purposes.

Use Block Number:

3028 - Outside 200 nmi (EEZ) of U.S

3900 - Outside 200 nmi of Mexico

99 - Undefined inland waters

