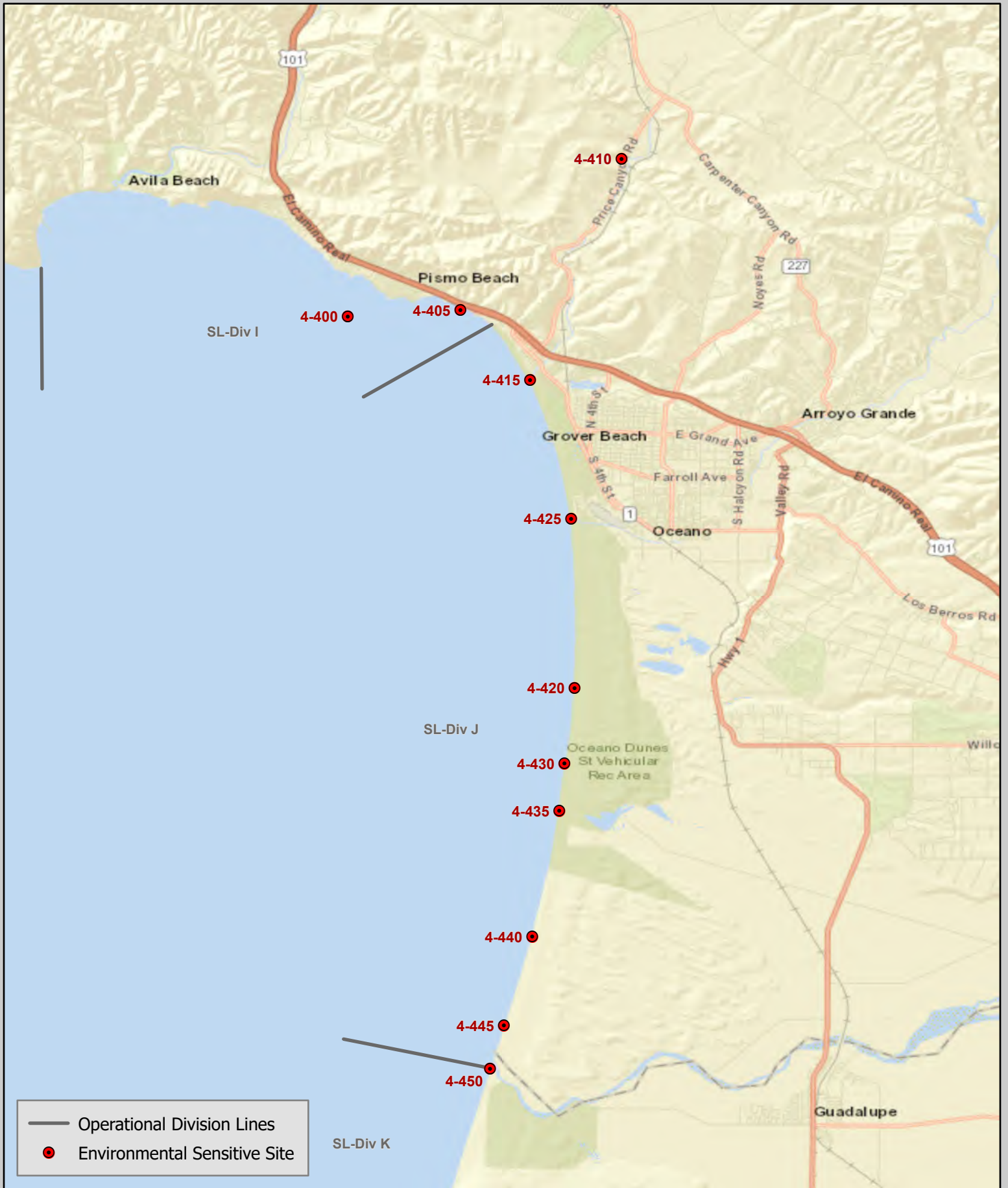



2400 South San Luis Obispo County (GRA 4)

South San Luis Obispo County GRA 4 extends from Bird Rock and Rocks Offshore Margo Dodd Park to the Santa Maria River with approximately 14 miles of shoreline. There are 11 Environmental Sensitive Sites. The Oceano Dunes State Vehicular Recreation Area and the United States Fish and Wildlife Service Guadalupe-Nipomo Dunes National Wildlife Refuge are within GRA 4. Most of the shoreline is a mix of salt and brackish-water marshes and fine to medium-grain sand beaches. There are multiple creeks of varying sizes. Except for these creeks, no shoreline response strategies exist for the additional Environmental Sensitive Sites. The recommendation is to consider offshore strategies during spill response.



Operational Division Lines
 Environmental Sensitive Site


 Calif. Dept. of Fish and Wildlife
 Office of Spill Prevention and Response

Data Source: OSPR, CDFW
 Author: OSPR, CDFW
 Created 7/19/2023 at 1:16 PM

ACP 4 - GRA 4


Environmental Sensitive Sites

San Luis Obispo County

0 1 3 4 Kilometers
 0 1 2 Miles

Map center coordinates:
 120.6474°W 35.0823°N

58



2410 South San Luis Obispo County (GRA 4) GRS Site Index

Site #	Site Name	Link to Strategy	Link to Area Photos
4-000-A	Typical SLO/Santa Barbara/Vent Sandy Beach	4-000-A	Not Available
4-400-A	Bird Rock & Rocks Offshore Margo Dodd Park	4-400-A	Bird Rock & Rocks Offshore Margo Dodd Park
4-405-B	Rocky Intertidal - Shell Beach	4-405-B	Rocky Intertidal - Shell Beach
4-410-A	Pismo Creek Upstream	4-410-A	Pismo Creek Upstream
4-415-A	Pismo Creek	4-415-A	Pismo Creek
4-420-A	Pismo State Beach	4-420-A	Pismo State Beach
4-425-A	Arroyo Grande Creek	4-425-A	Arroyo Grande Creek
4-430-A	Oceano Dunes State Vehicular Recreation Area	4-430-A	Oceano Dunes State Vehicular Recreation Area
4-435-A	Oso Flaco Creek	4-435-A	Oso Flaco Creek
4-440-A	USFWS Guadalupe-Nipomo Dunes NWR	4-440-A	USFWS Guadalupe-Nipomo Dunes NWR
4-445-A	Guadalupe Oil Field	4-445-A	Guadalupe Oil Field
4-450-A	Santa Maria River	4-450-A	Santa Maria River

County: San Luis Obispo**ACP Division/Segment:***NOAA Chart:**Map Book:**Decimal Degrees:***Site Description:****Resources at Risk:***ESI and Habitat:* 3A Fine- to medium-grained sand beaches**List of Resources at Risk:**

	Resource Name	Status	Presence	Sensitivity
Birds	Western snowy plover	FT, SSC	Year-round	
Birds	California least tern	FE, SE	Apr-Sep	

FT-Federally Threatened, FE-Federally Endangered, FP-Federally Protected, SE-State Endangered, ST-State Threatened, SP -State Protected, SR-State Rare, SSC-Species of Special Concern, BGEPA-Bald and Golden Eagle Protection Act, SSSP-State Special Status Species

List of Key Contacts:

Type	Name/Title	Organization	Phone
C	/	Central Coast Information Center	(805) 682-4711
C	/Coordinator	Native American Heritage Commission	(916) 373-3710
C	/	South Central Coast Information Center	(657) 278-5395
T	/Spill Response Coordinator	US Fish and Wildlife Service, Federal T&E Species	(805) 644-1766

C – Cultural, Historic, Archaeological; E – Entry/Owner/Access; O – Other; S – Safety; T – Trustee; X – Exclusion or Security

Additional Site Summary Comments:

WESTERN SNOWY PLOVERS NEST FROM MAR-SEP AND CALIFORNIA LEAST TERNS NEST FROM APR-SEP. Western snowy plovers are small, white and tan colored shorebirds. California least terns are small, gray, white and black colored diving birds. Western snowy plovers conceal their nests in the upper rack line above the high tide line while California least terns generally nest on open beaches and/or along estuary shorelines. Nests are usually constructed on loose sand and are easily stepped on due to their very cryptic nature. Chicks are known to run between nests and the waterline. Western snowy plover adults forage while wading along the shoreline. California least tern adults dive into the water to forage in shallow, nearshore areas of the open coast, embayments, estuaries, and dune lakes.

Concerns and Advice to Responders:

Hazard and Restrictions:

Site Strategies:

Site Validation Level: II

Strategy: 4-000.1 Objective: Shoreline Pre-Clean: Resource Specialist Supervision Required

Strategy: After approval only, pre-clean beach with hand crews to move and store kelp, driftwood, and vegetative debris above high-tide line. Collect and properly dispose of trash. Redistribute wrack after response efforts are completed. The areas to be protected should be monitored by an assigned biological monitor. Heavy equipment and 4WD vehicles may be used pending approval.

Table of Response Resources

Equipment	Sub-Type	Size	Unit	QTY	Unit	Last Page Update
Staff	Natural Resource Specialist					

Strategy: 4-000.2 Objective: Other: See Strategy Box

Strategy: In consultation with USFWS and CDFW, western snowy plover or California least tern eggs may be removed from nests by authorized and qualified personnel and taken to an approved facility to reduce injury.

Table of Response Resources

Equipment	Sub-Type	Size	Unit	QTY	Unit	Last Page Update
Staff	Natural Resource Specialist					

Logistics:

Additional Operational Comments: Beaches may be pre-cleaned if given prior authorization. Some beaches have designated fenced areas for nesting. Individual Environmentally Sensitive Sites may have additional western snowy plover and California least tern information.

2420 Lists of Economic Resources Susceptible to Oiling

A summary of Human Health and Safety Sites and Economic Resources is listed by GRA.

Economic Sites -South San Luis Obispo County

Site Information	Site Number & Location	Lat/Long & Priority
<p>Pismo Pier 158 Hinds Ave. Pismo Beach CA 93449 Phone: (805) 574-4100 Site Description: Municipal pier.</p>	<p>Site Number: 4-4-SL-100-D Operational Division: SL - J</p>	<p>Parks, Beaches, Recreational Areas D Lat/Long: 35.13862 -120.64321</p>
<p>Pismo State Beach 158 Hinds Ave. Pismo Beach CA 93449 Phone: (805) 574-4100 Site Description: Beach - day use. Public vehicles permitted on beach.</p>	<p>Site Number: 4-4-SL-110-D Operational Division: SL - J</p>	<p>Parks, Beaches, Recreational Areas D Lat/Long: 35.13862 -120.64321</p>
<p>Oceano Dunes State VRA 100 Pier Ave. Oceano CA 93445 Phone: (805) 574-4100</p>	<p>Site Number: 4-4-SL-120-D Operational Division: SL - J</p>	<p>Parks, Beaches, Recreational Areas D Lat/Long: 35.06324 -120.62586</p>
<p>Site Description: Beach - camping and day use. Public vehicles permitted on beach. Off-highway vehicles permitted on beach and dunes between beach post markers 2 and 8.</p>		

2430 Shoreline Operational Divisions



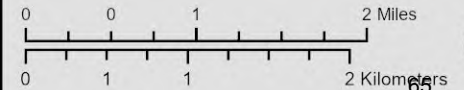
Calif. Dept. of Fish and Wildlife
Office of Spill Prevention and Response

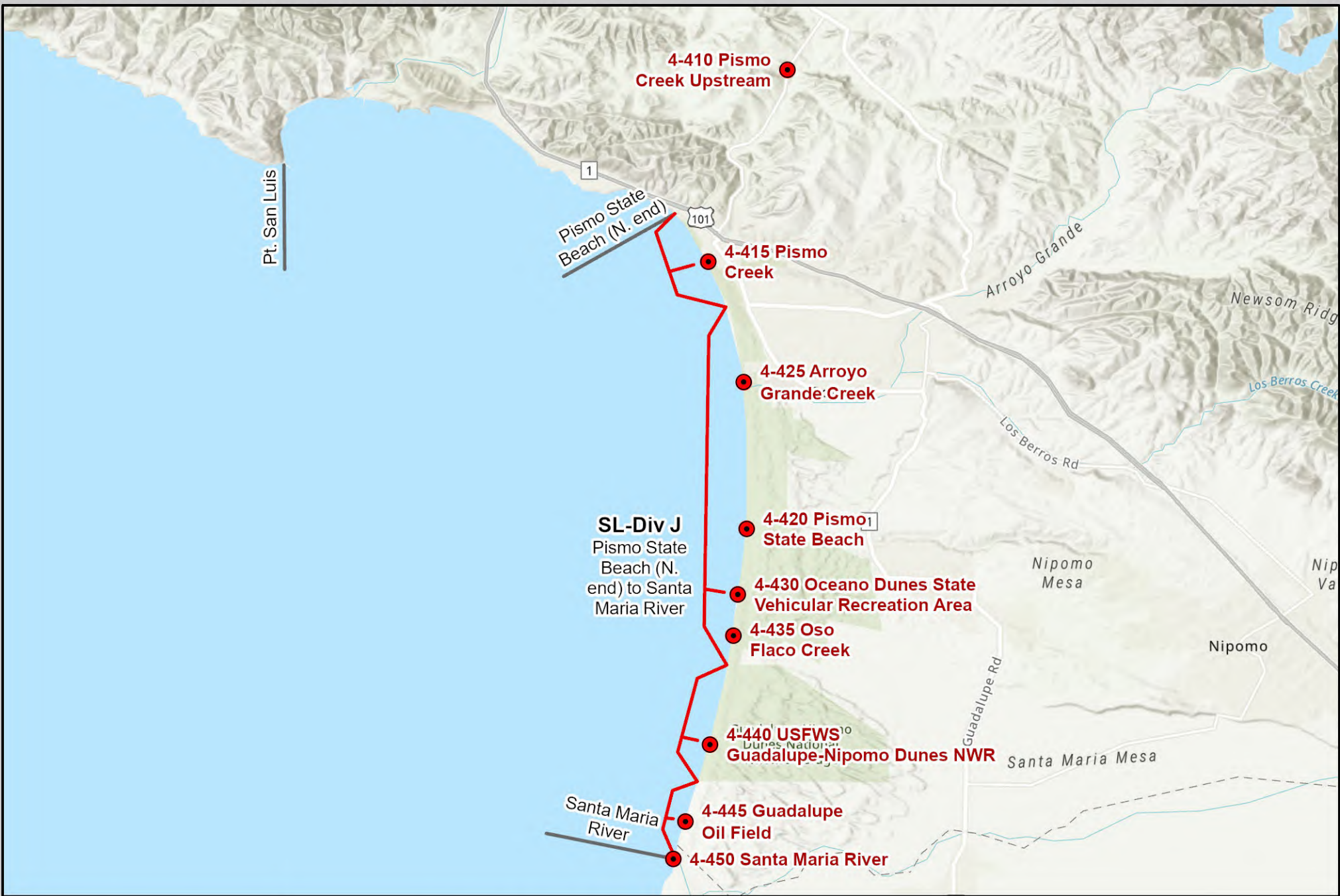
Data Source: OSPR, CDFW
Author: OSPR, CDFW
Created: 1/18/2024

NAD_1983_California_Teale_Albers

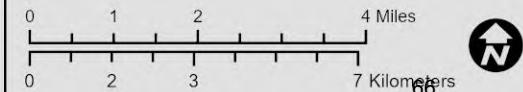
ACP 4/5 Annex C

San Luis Obispo (SL) County Operational Division I Environmental Sensitive Sites





San Luis Obispo (SL) County Operational Division J Environmental Sensitive Sites





Santa Maria River

Rancho Guadalupe Dunes Park

SL-Div K
Santa Maria River
to Mussel Rock

North of Mussel Point

458 ft



Calif. Dept. of Fish and Wildlife
Office of Spill Prevention and Response

Data Source: OSPR, CDFW NAD_1983_California_Teale_Albers
Author: OSPR, CDFW
Created: 1/18/2024

ACP 4/5 Annex C

Santa Barbara (SL) County Operational Division K Environmental Sensitive Sites

