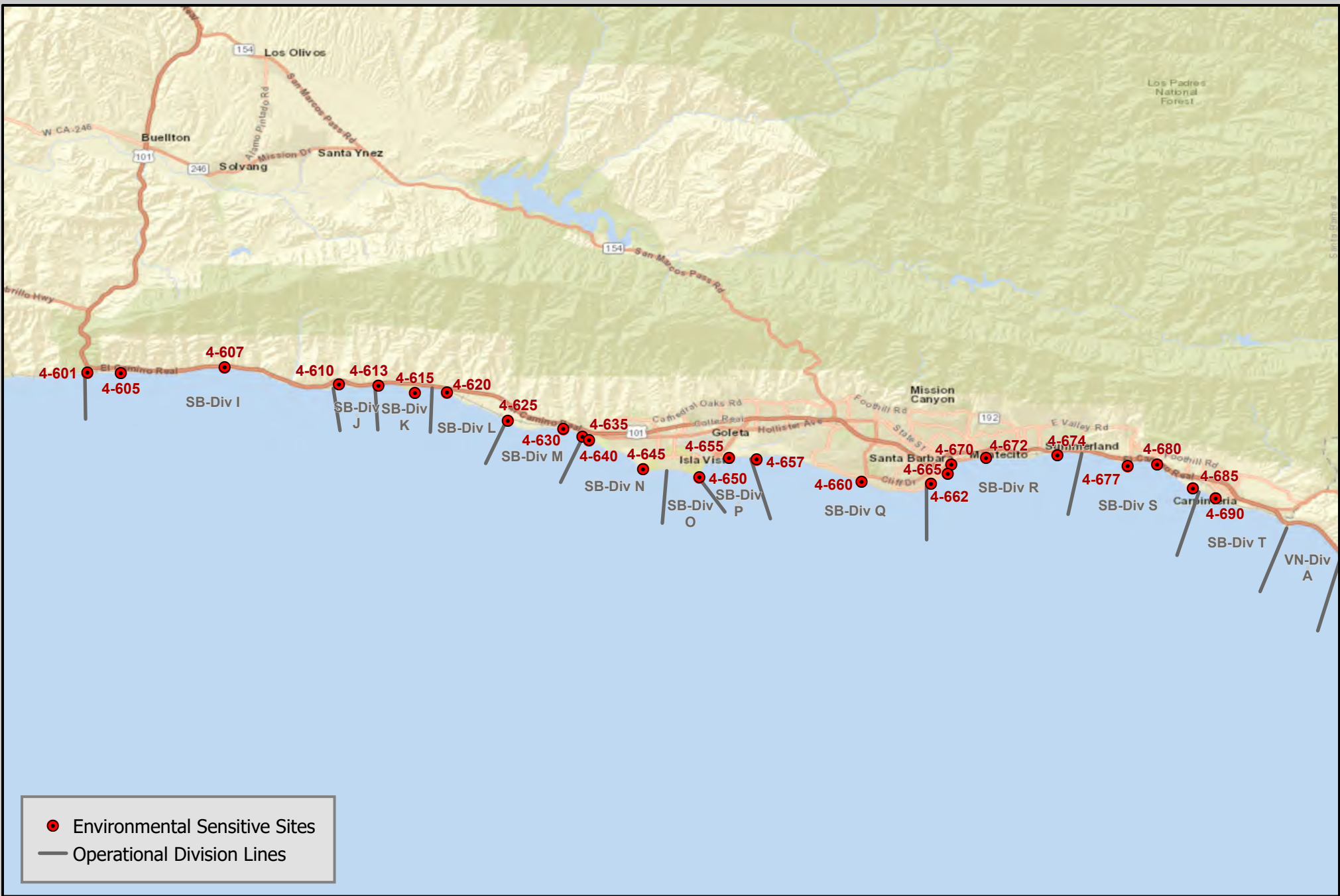



## **2600 South/East Santa Barbara County (GRA 6)**

South/East Santa Barbara County GRA 6 extends from Gaviota to Rincon Point for approximately 47 miles to the border with Ventura County. There are 25 Environmental Sensitive Sites. Most of the shoreline is a mix of exposed rocky shore, exposed wave-cut platforms in bedrock, fine to medium-grain sand beach, cobble, and boulder beaches. There are several coastal estuaries and wetlands of varying size with Goleta Slough and Carpinteria Marsh being the largest. Most of the shoreline is exposed except for Santa Barbara Harbor.



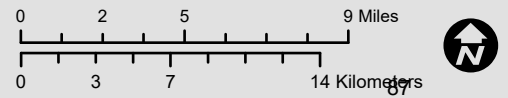
- Environmental Sensitive Sites
- Operational Division Lines


 Calif. Dept. of Fish and Wildlife  
 Office of Spill Prevention and Response  
 Data Source: OSPR, CDFW      NAD\_1983\_California\_Teale\_Albers  
 Author: OSPR, CDFW  
 Created: 7/24/2023      ACP 4/5 Annex C

## ACP 4 - GRA 6

### Environmental Sensitive Sites

### San Luis Obispo County



## 2610 South/East Santa Barbara County (GRA 6) GRS Site Index

Site #	Site Name	Link to Strategy	Link to Area Photos
4-000-A	Typical SLO/Santa Barbara/Vent Sandy Beach	4-000-A	Not Available
4-601-A	Gaviota Creek	<a href="#">4-601-A</a>	<a href="#">Gaviota Creek</a>
4-605-C	Canada Del Alcatraz & Cementario Creeks	<a href="#">4-605-C</a>	<a href="#">Canada Del Alcatraz &amp; Cementario Creeks</a>
4-607-A	Arroyo Hondo Preserve & Creek	<a href="#">4-607-A</a>	Not Available
4-610-A	Refugio Creek	<a href="#">4-610-A</a>	<a href="#">Refugio Creek</a>
4-613-A	Corral-Las Flores Creeks	<a href="#">4-613-A</a>	<a href="#">Corral-Las Flores Creeks</a>
4-615-A	El Capitan Creek	<a href="#">4-615-A</a>	<a href="#">El Capitan Creek</a>
4-620-A	Las Llagas (El Capitan Ranch Beach)	<a href="#">4-620-A</a>	<a href="#">Las Llagas (El Capitan Ranch Beach)</a>
4-625-A	Naples	<a href="#">4-625-A</a>	<a href="#">Naples</a>
4-630-A	Eagle Canyon Creek	<a href="#">4-630-A</a>	<a href="#">Eagle Canyon Creek</a>
4-635-A	Tecolote Creek	<a href="#">4-635-A</a>	<a href="#">Tecolote Creek</a>
4-640-A	Bell Canyon Creek	<a href="#">4-640-A</a>	<a href="#">Bell Canyon Creek</a>
4-645-A	Devereux Slough	<a href="#">4-645-A</a>	<a href="#">Devereux Slough</a>
4-650-C	Goleta Point & Campus Lagoon	<a href="#">4-650-C</a>	<a href="#">Goleta Point &amp; Campus Lagoon</a>
4-655-A	Goleta Slough & Beach	<a href="#">4-655-A</a>	<a href="#">Goleta Slough &amp; Beach</a>
4-657-B	More Mesa & Goleta Rocks	<a href="#">4-657-B</a>	<a href="#">More Mesa &amp; Goleta Rocks</a>
4-660-A	Arroyo Burro Creek	<a href="#">4-660-A</a>	<a href="#">Arroyo Burro Creek</a>
4-662-C	Leadbetter Beach	<a href="#">4-662-C</a>	<a href="#">Leadbetter Beach</a>
4-665-C	Santa Barbara Harbor	<a href="#">4-665-C</a>	<a href="#">Santa Barbara Harbor</a>
4-670-A	Mission Creek: Laguna Channel	<a href="#">4-670-A</a>	<a href="#">Mission Creek: Laguna Channel</a>
4-672-A	Sycamore Creek & Andree Clark Bird Refuge	<a href="#">4-672-A</a>	<a href="#">Sycamore Creek &amp; Andree Clark Bird Refuge</a>
4-674-C	Fernald Point	<a href="#">4-674-C</a>	<a href="#">Fernald Point</a>
4-677-C	Loon Point & Toro Canyon Creek	<a href="#">4-677-C</a>	<a href="#">Loon Point &amp; Toro Canyon Creek</a>
4-680-A	Arroyo Paredon Creek & Sandyland	<a href="#">4-680-A</a>	<a href="#">Arroyo Paredon Creek &amp; Sandyland</a>
4-685-A	Carpinteria Marsh	<a href="#">4-685-A</a>	<a href="#">Carpinteria Marsh</a>
4-690-A	Carpinteria Creek & State Beach	<a href="#">4-690-A</a>	<a href="#">Carpinteria Creek &amp; State Beach</a>

*County:* San Luis Obispo**ACP Division/Segment:***NOAA Chart:**Map Book:**Decimal Degrees:***Site Description:****Resources at Risk:***ESI and Habitat:* 3A Fine- to medium-grained sand beaches**List of Resources at Risk:**

	Resource Name	Status	Presence	Sensitivity
Birds	Western snowy plover	FT, SSC	Year-round	
Birds	California least tern	FE, SE	Apr-Sep	

FT-Federally Threatened, FE-Federally Endangered, FP-Federally Protected, SE-State Endangered, ST-State Threatened, SP -State Protected, SR-State Rare, SSC-Species of Special Concern, BGEPA-Bald and Golden Eagle Protection Act, SSSP-State Special Status Species

**List of Key Contacts:**

Type	Name/Title	Organization	Phone
C	/	Central Coast Information Center	(805) 682-4711
C	/Coordinator	Native American Heritage Commission	(916) 373-3710
C	/	South Central Coast Information Center	(657) 278-5395
T	/Spill Response Coordinator	US Fish and Wildlife Service, Federal T&E Species	(805) 644-1766

C – Cultural, Historic, Archaeological; E – Entry/Owner/Access; O – Other; S – Safety; T – Trustee; X – Exclusion or Security

**Additional Site Summary Comments:**

WESTERN SNOWY PLOVERS NEST FROM MAR-SEP AND CALIFORNIA LEAST TERNS NEST FROM APR-SEP. Western snowy plovers are small, white and tan colored shorebirds. California least terns are small, gray, white and black colored diving birds. Western snowy plovers conceal their nests in the upper rack line above the high tide line while California least terns generally nest on open beaches and/or along estuary shorelines. Nests are usually constructed on loose sand and are easily stepped on due to their very cryptic nature. Chicks are known to run between nests and the waterline. Western snowy plover adults forage while wading along the shoreline. California least tern adults dive into the water to forage in shallow, nearshore areas of the open coast, embayments, estuaries, and dune lakes.

**Concerns and Advice to Responders:**

**Hazard and Restrictions:**

**Site Strategies:**

**Site Validation Level: II**

**Strategy: 4-000.1 Objective:** Shoreline Pre-Clean: Resource Specialist Supervision Required

**Strategy:** After approval only, pre-clean beach with hand crews to move and store kelp, driftwood, and vegetative debris above high-tide line. Collect and properly dispose of trash. Redistribute wrack after response efforts are completed. The areas to be protected should be monitored by an assigned biological monitor. Heavy equipment and 4WD vehicles may be used pending approval.

Table of Response Resources

Equipment	Sub-Type	Size	Unit	QTY	Unit	Last Page Update
Staff	Natural Resource Specialist					

**Strategy: 4-000.2 Objective:** Other: See Strategy Box

**Strategy:** In consultation with USFWS and CDFW, western snowy plover or California least tern eggs may be removed from nests by authorized and qualified personnel and taken to an approved facility to reduce injury.

Table of Response Resources

Equipment	Sub-Type	Size	Unit	QTY	Unit	Last Page Update
Staff	Natural Resource Specialist					

**Logistics:**

**Additional Operational Comments:** Beaches may be pre-cleaned if given prior authorization. Some beaches have designated fenced areas for nesting. Individual Environmentally Sensitive Sites may have additional western snowy plover and California least tern information.

## **2620 Lists of Economic Resources Susceptible to Oiling**

A summary of Human Health and Safety Sites and Economic Resources is listed by GRA.

Economic Sites - South/East Santa Barbara County

Site Information	Site Number & Location	Lat/Long & Priority
<p><b>Gaviota State Park</b> 17620 Gaviota Beach Rd. Gaviota CA Phone: (951) 443-2969</p> <p><b>Site Description:</b> Beach - fishing pier with boat hoist, camping and day use with fee.</p>	<p>Site Number: 4-6-SB-100-D Operational Division: SB - I</p>	<p>Parks, Beaches, Recreational Areas <b>D</b> Lat/Long: 34.4722 -120.2269</p>
<p><b>Refugio State Beach</b> 10 Refugio Beach Rd. Goleta Ca Phone: (951) 443-2969</p> <p><b>Site Description:</b> Beach - camping and day use with fee.</p>	<p>Site Number: 4-6-SB-110-D Operational Division: SB - J</p>	<p>Parks, Beaches, Recreational Areas <b>D</b> Lat/Long: 34.46274 -120.06959</p>
<p><b>El Capitan State Beach</b> El Capitan State Beach Rd Goleta Ca Phone: (951) 443-2969</p> <p><b>Site Description:</b> Beach - camping and day use with fee.</p>	<p>Site Number: 4-6-SB-120-D Operational Division: SB - K</p>	<p>Parks, Beaches, Recreational Areas <b>D</b> Lat/Long: 34.46127 -120.01885</p>
<p><b>The Cultured Abalone</b> 9580 Dos Pueblos Canyon Rd. Goleta CA 93117 Phone: (805) 685-1956</p> <p><b>Site Description:</b> Mariculture- red abalone growing area Dos Pueblos Ranch, Goleta. Email: info@culturedabalone.com</p>	<p>Site Number: 4-6-SB-130-D Operational Division: SB - M</p>	<p>Aquaculture and Mariculture <b>D</b> Lat/Long: 34.43996 -119.96249</p>
<p><b>Sunnyside Sea Farms</b> Ellwood Pier Goleta CA 93117 Phone: (805) 964-5844</p> <p><b>Site Description:</b> Mariculture - macro algae cultivation research and education growing area two parcels by Ellwood pier near Eagle Creek.</p>	<p>Site Number: 4-6-SB-140-D Operational Division: SB - M</p>	<p>Aquaculture and Mariculture <b>D</b> Lat/Long: 34.43074 -119.92345</p>
<p><b>Santa Barbara Shores Beach Access</b> Hollister Ave. Goleta Ca Phone: (805) 681-5526</p> <p><b>Site Description:</b> Beach - day use.</p>	<p>Site Number: 4-6-SB-150-D Operational Division: SB - N</p>	<p>Parks, Beaches, Recreational Areas <b>D</b> Lat/Long: 34.42086 -119.89661</p>
<p><b>Isla Vista Beach</b> South of Del Playa Dr. Isla Vista CA Phone: (805) 681-5526</p> <p><b>Site Description:</b> Beach - day use.</p>	<p>Site Number: 4-6-SB-160-D Operational Division: SB - O</p>	<p>Parks, Beaches, Recreational Areas <b>D</b> Lat/Long: 34.40853 -119.8548</p>
<p><b>UCSB Seawater System Intakes</b> two intakes 0.33 miles southeast of Campus Point  Phone: (805) 893-8300</p> <p><b>Site Description:</b> intakes are 55 ft deep, marked by surface buoys</p>	<p>Site Number: 4-6-SB-170-D Operational Division: SB - P</p>	<p>Aquariums and Marine Labs <b>D</b> Lat/Long: 34.401317 -119.83985</p>
<p><b>Goleta Beach County Park</b> 5986 Sandspit Rd. Goleta Ca 93117 Phone: (805) 686-5059</p> <p><b>Site Description:</b> Beach - fishing pier and day use.</p>	<p>Site Number: 4-6-SB-180-D Operational Division: SB - P</p>	<p>Parks, Beaches, Recreational Areas <b>D</b> Lat/Long: 34.41604 -119.83042</p>
<p><b>Arroyo Burro Beach County Park</b> 2981 Cliff Dr. Santa Barbara Ca 93109 Phone: (805) 686-5059</p> <p><b>Site Description:</b> Beach - day use and restaurant.</p>	<p>Site Number: 4-6-SB-190-D Operational Division: SB - Q</p>	<p>Parks, Beaches, Recreational Areas <b>D</b> Lat/Long: 34.40313 -119.74387</p>

Economic Sites - South/East Santa Barbara County

Site Information	Site Number & Location	Lat/Long & Priority
<p><b>Santa Barbara Mariculture</b>                      939 North Patterson Ave.                      Santa Barbara CA 93111                      Phone: (805) 886-1283</p>	<p>Site Number: 4-6-SB-200-D                      Operational Division: SB-Q</p>	<p>Aquaculture and Mariculture <b>D</b>                      Lat/Long: 34.37768 -119.74585</p>
<p><b>Site Description:</b> Mariculture - Hope Ranch mussels growing area is offshore of Arroyo Burro Creek.</p>		
<p><b>Leadbetter Beach</b>                      801 Shoreline Dr.                      Santa Barbara Ca 93109                      Phone: (805) 564-5418</p>	<p>Site Number: 4-6-SB-210-D                      Operational Division: SB-R</p>	<p>Parks, Beaches, Recreational Areas <b>D</b>                      Lat/Long: 34.40071 -119.69946</p>
<p><b>Site Description:</b> Beach - day use, picnic area, restaurant, city beach.</p>		
<p><b>West Beach</b>                      Seaward of Cabrillo Blvd.                      Santa Barbara CA                      Phone: (805) 564-5418</p>	<p>Site Number: 4-6-SB-220-D                      Operational Division: SB-R</p>	<p>Parks, Beaches, Recreational Areas <b>D</b>                      Lat/Long: 34.41075 -119.69065</p>
<p><b>Site Description:</b> Beach - day use, recreational city beach.</p>		
<p><b>Santa Barbara Harbor &amp; Waterfront</b>                      132-A Harbor Way                      Santa Barbara CA 93109                      Phone: (805) 564-5530</p>	<p>Site Number: 4-6-SB-230-D                      Operational Division: SB-R</p>	<p>Public Marinas and Harbors <b>D</b>                      Lat/Long: 34.40395 -119.69175</p>
<p><b>Site Description:</b> Harbor- Berthing: 1000, Mooring: 12, marina, launch ramp, fuel dock, boat services, and restaurants.</p>		
<p><b>Stearns Wharf</b>                      State St. at Cabrillo Blvd.                      Santa Barbara CA                      Phone: (805) 564-5530</p>	<p>Site Number: 4-6-SB-240-D                      Operational Division: SB-R</p>	<p>Parks, Beaches, Recreational Areas <b>D</b>                      Lat/Long: 34.40888 -119.68492</p>
<p><b>Site Description:</b> Fishing area, restaurants, shopping, and museums.</p>		
<p><b>Chase Palm Park</b>                      236 E. Cabrillo Ave.                      Santa Barbara CA 93101                      Phone: (805) 564-5418</p>	<p>Site Number: 4-6-SB-250-D                      Operational Division: SB-R</p>	<p>Parks, Beaches, Recreational Areas <b>D</b>                      Lat/Long: 34.41566 -119.68252</p>
<p><b>Site Description:</b> Recreational arts and crafts show, picnic area, playground.</p>		
<p><b>Charles E. Meyer Desalination Plant</b>                      Intake - 1/2 mile off Stearns Wharf                      Santa Barbara CA                      Phone: (805) 564-5460</p>	<p>Site Number: 4-6-SB-260-HHS                      Operational Division: SB-R</p>	<p>Human Health and Safety or Critical Infrastructure                      Lat/Long: 34.41891 -119.68702</p>
<p><b>Site Description:</b> Water intake.</p>		
<p><b>East Beach Butterfly Lane</b>                       Phone: (805) 564-5418</p>	<p>Site Number: 4-6-SB-270-D                      Operational Division: SB-R</p>	<p>Parks, Beaches, Recreational Areas <b>D</b>                      Lat/Long: 34.41687 -119.66588</p>
<p><b>Site Description:</b> Beach - day use, beach access.</p>		
<p><b>Hammonds Beach</b>                      End of Eucalyptus Ln.                      Montecito CA                      Phone: (805) 686-5059</p>	<p>Site Number: 4-6-SB-280-D                      Operational Division: SB-R</p>	<p>Parks, Beaches, Recreational Areas <b>D</b>                      Lat/Long: 34.415655 -119.637639</p>
<p><b>Site Description:</b> Beach - day use, recreational.</p>		
<p><b>Eucalyptus Lane</b>                      End of Eucalyptus Ln.                      Montecito CA                      Phone: (805) 686-5059</p>	<p>Site Number: 4-6-SB-290-D                      Operational Division: SB-R</p>	<p>Parks, Beaches, Recreational Areas <b>D</b>                      Lat/Long: 34.41864 -119.631527</p>
<p><b>Site Description:</b> Beach access.</p>		



Economic Sites - South/East Santa Barbara County

Site Information	Site Number & Location	Lat/Long & Priority
<p><b>Miramar Beach</b> End of Eucalyptus Ln. Montecito CA Phone: (805) 686-5059 <b>Site Description:</b> Beach - day use, recreational.</p>	<p>Site Number: 4-6-SB-300-D Operational Division: SB-R</p>	<p>Parks, Beaches, Recreational Areas <b>D</b> Lat/Long: 34.419216 -119.6295</p>
<p><b>Lookout County Park</b> Lookout Park Rd. Summerland CA 93067 Phone: (805) 686-5059 <b>Site Description:</b> Beach - day use, picnic area, volleyball court.</p>	<p>Site Number: 4-6-SB-310-D Operational Division: SB-S</p>	<p>Parks, Beaches, Recreational Areas <b>D</b> Lat/Long: 34.42027 -119.60112</p>
<p><b>Loon Point Access</b> 2731 Padaro Ln. Carpinteria Ca 93013 Phone: (805) 686-5059 <b>Site Description:</b> Beach - day use, beach access.</p>	<p>Site Number: 4-6-SB-320-D Operational Division: SB-S</p>	<p>Parks, Beaches, Recreational Areas <b>D</b> Lat/Long: 34.41276 -119.57514</p>
<p><b>Carpinteria City Beach</b> End of Linden Ave. and Ash Ave. Carpinteria CA 03013 Phone: (805) 684-5405 <b>Site Description:</b> Beach - day use, recreational.</p>	<p>Site Number: 4-6-SB-330-D Operational Division: SB-T</p>	<p>Parks, Beaches, Recreational Areas <b>D</b> Lat/Long: 34.39458 -119.52608</p>
<p><b>Carpinteria State Beach</b> End of Palm Ave. Carpinteria CA Phone: (951) 443-2969 <b>Site Description:</b> Beach - camping, day use with fee, Tomol Interpretive play area.</p>	<p>Site Number: 4-6-SB-340-D Operational Division: SB-T</p>	<p>Parks, Beaches, Recreational Areas <b>D</b> Lat/Long: 34.3918 -119.52128</p>
<p><b>Rincon Beach County Park</b> Bates Rd. and Hwy 101 Carpinteria CA 93105 Phone: (805) 686-5059 <b>Site Description:</b> Beach - day use.</p>	<p>Site Number: 4-6-SB-350-D Operational Division: SB-T</p>	<p>Parks, Beaches, Recreational Areas <b>D</b> Lat/Long: 34.37802 -119.48075</p>

## **2630 Shoreline Operational Divisions**

### **Division I Description**

This 9.1 mile stretch of coast is characterized by isolated narrow cobble and sand beaches and is backed by high wave washed coastal bluffs. The shoreline is obstructed along much of its length by exposed bedrock outcroppings, rocky promontories that extend well into intertidal areas (east of Gaviota State Park, Cementerio and Alcatraz Creeks, and cliffs at west end of Refugio State Beach). This topography blocks access for equipment and vehicles along much of the coastline. There are only seven access points along this shoreline. The configuration and nature of shorelines in this area change depending upon ocean and weather conditions and sand loss and replenishment.

### **Division J Description**

This 1.6 mile stretch of shoreline includes Refugio State Beach. The western portion of the shoreline is a protected cove accessible from the campground. From the west end of Refugio beach, there is 1 mile of unobstructed fine to medium grain sand beach. The beach is blocked by rocky outcroppings at the east end of the division. Beginning immediately east of the campground, the shoreline is backed by coastal cliffs and is inaccessible except by longshore travel. There is a paved bike path along the top of the coastal bluffs which extends 2.6 miles, from Refugio to El Capitan Beach. The bike path is damaged and through vehicular traffic between Refugio and El Capitan is not possible.

### **Division K Description**

This 2.4 mile stretch of shoreline includes El Capitan State Beach. The western portion of the shoreline, from the end of Refugio State Beach, is 1 mile of unobstructed fine to medium grain sand beach. The shoreline through access is blocked by rocky outcroppings at the east end of the division. There is a paved bike path along the top of the coastal bluffs which extends 2.6 miles, from Refugio to El Capitan Beach. The bike path is damaged and through vehicular traffic between Refugio and El Capitan is not possible.

### **Division L Description**

This 3.2 mile stretch of shoreline is characterized by narrow fine to medium grained sand beaches backed by steep cliffs. The western boundary of this division is a large rock on the beach located 0.6 mile west of El Capitan Ranch at Las Llagas Creek. The eastern boundary of the division is the bluffs just west of Dos Pueblos Creek. Vehicular traffic along the Division L shoreline is possible only during low tides due to intermittent narrowing of the beach.

### **Division M Description**

This 2.9 mile stretch of shoreline is characterized by narrow to moderately wide fine to medium grained sand beaches backed by steep cliffs. Access Points are few and on private property. Access to Eagle Canyon Creek is located on the road to Haskell's pier. Vehicular traffic along the Division M shoreline is possible but only during lower low tides due to intermittent narrowing of the beach, exposed rocks, cobbles, or beach profile. Obstructions and narrow beaches occur immediately east of Dos Pueblos Creek, west of Eagle Creek and west of the pier. Most roadways are dirt. Ellwood pier and the Bacara Resort are in the SE

section of this division. There is a public access point to Haskell's Beach at Tecolote Creek just east of the Bacara Resort.

#### **Division N Description**

This 3.6 mile stretch of shoreline is characterized by fine to medium grained sand beaches backed by steep cliffs. Vehicular traffic along the division N shoreline is possible during most tides. There are two vehicular beach accesses, from north to south at Tecolote Creek immediately SE of Bacara Resort, Bell Creek through the decommissioned Ellwood Onshore Facility, two-foot paths - one from Santa Barbara Shores Park and one from Sands Beach just east of Devereux Slough. The two intertidal oil facilities on piers below Sand Piper Golf Course have been removed. There is an area of upper beach, about 1200 ft long within the Coal Oil Point Ecological Reserve which is closed along Devereux Slough to protect nesting western snowy plovers. Obtain instructions and guidance from the reserve manager.

#### **Division O Description**

This 1.2 mile stretch of shoreline from western Isla Vista to Goleta Point is characterized by fine to medium grained sand beaches backed by steep cliffs. The beaches are narrow in the westernmost about 300 yards of the Division and are accessible to vehicular traffic only at lower tides. Beaches are relatively wide and accessible to vehicular traffic along the eastern shoreline of Isla Vista and continue to widen toward Goleta Point. The best vehicle access for this Division is from the west arm of the UCSB Campus Lagoon where there are no cliffs. There are four sets of stairs in Isla Vista within this Division. Parking is difficult in Isla Vista. Authorization to park on campus or to operate on the shorelines within this area must be obtained from the UCSB campus police. Under low tidal and high sand conditions vehicular traffic is possible around Goleta Point into Division P.

#### **Division P Description**

This 2.3 mile stretch of shoreline from Goleta Point to the tar seep on the shoreline is characterized by fine to medium grained sand beaches backed by steep cliffs. There is a 0.9-mile-long stretch of uninterrupted sandy shoreline from Goleta Point to a rocky prominence which extends out into the water at the west end of the County Park. There is one stairway down to the beach in this segment. Goleta Beach County Park is in this division. There is good parking, staging areas, and access points to the beach along the county park. Vehicular access from the west end of Goleta Beach County Park to the large tar seep can be continuous if the mouth of the Goleta Slough is closed.

#### **Division Q Description**

This 6.75 mile stretch of shoreline from the large beach tar seep on the Goleta shoreline along Hope Ranch and Mesa shorelines to Santa Barbara Point, just west of Leadbetter Beach, is characterized by fine to medium grained sand beaches backed by steep cliffs. The westmost 0.45 mile section of Division Q has four larger and several smaller tar seeps along this section of shoreline which may obstruct vehicular traffic. Sand is underlain in many places by cobbles and low bedrock outcroppings which may obstruct vehicle access when sand levels are low. Vehicles can access this shoreline through Hope Ranch and at Arroyo Burro Beach.

### **Division R Description**

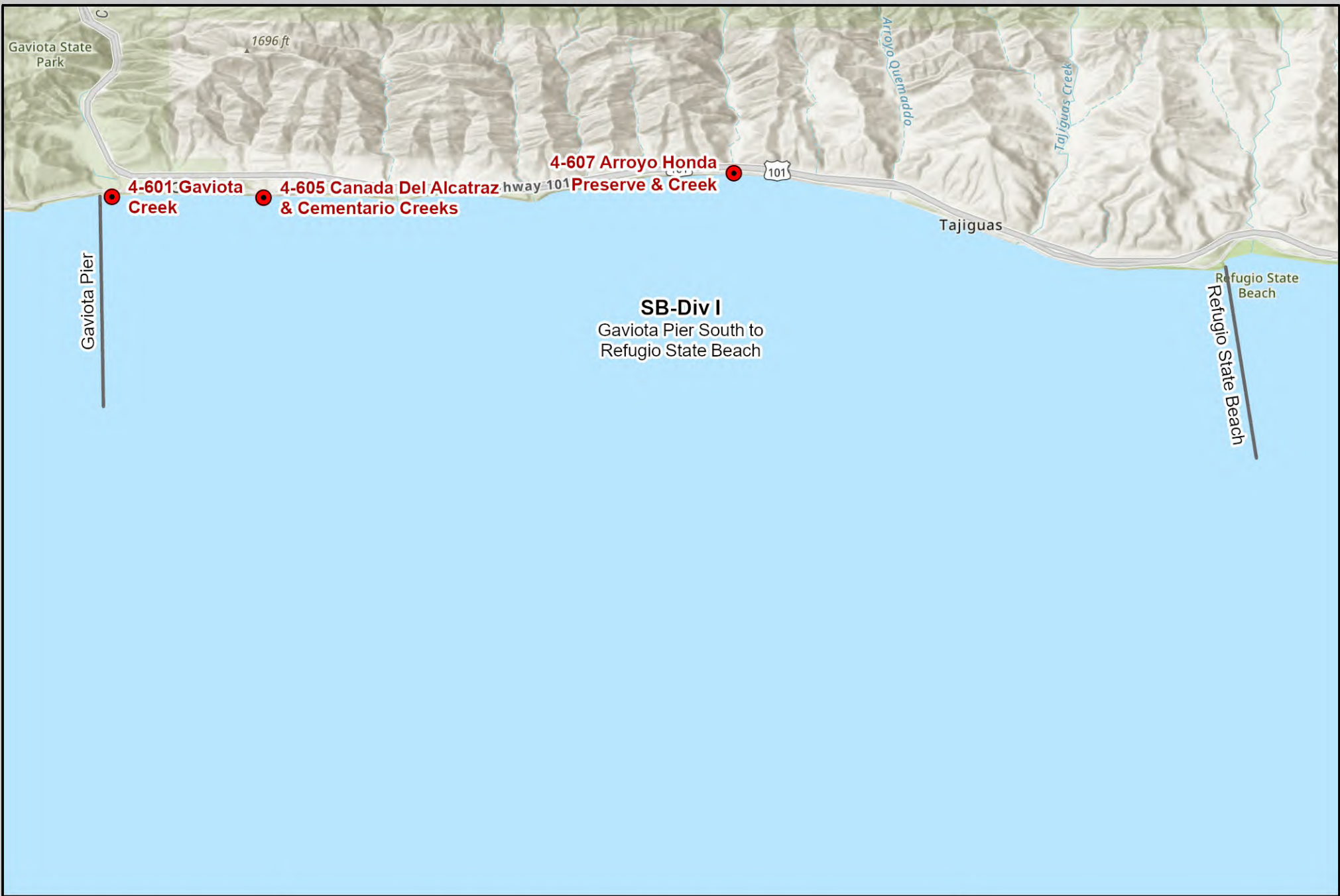
This 6.2 mile stretch of shoreline extends from Santa Barbara Point to the Brown House on the beach west of Lookout Park in Summerland. The western 1/2 of the division is characterized by fine to medium grained sand beaches along a 3.0 mile stretch of high use shoreline from Santa Barbara Point to the Andree Clark Bird Refuge. This area is overseen by the City of Santa Barbara and includes the Harbor, Stearns Wharf, Hotel Row on Cabrillo Blvd and heavily used local beaches and parking areas where shoreline access for personnel and equipment is excellent. In large spill situations traffic and public use will have to be controlled. East of Andree Clark Bird Refuge the beaches become narrower and subject to wave wash. Although the beach is useable for vehicular traffic, access to and along the shoreline for vehicular traffic is more difficult because of steep cliffs, lack of roads and ramps, and extensive stretches of private property predominated by single family dwellings. During higher tides and/or low sand conditions, vehicular traffic along the beach may be impeded by cobbles and bedrock particularly around Fernald Point. Between Fernald Point and the end of Division R, the beach narrows and through passage for vehicular traffic to Summerland Beach is generally impeded by wave-wash.

### **Division S Description**

This 4.7 mile stretch of shoreline extends from the Brown House on the beach, west of Lookout Park in Summerland, east to the seaward end of Sandyland Cove Road just west of Carpinteria. The western 1.7 miles of the division, from just west of the brown house to Loon Point, is characterized by fine to medium grained sand beaches backed by cliffs. There are two paved vehicular accesses in this segment and one foot pathway at Padaro Lane. From Loon Point to Beach Club Drive in the Serena area, the beach narrows under low sand conditions and may be covered by cobbles. During moderate tides, this shoreline becomes wave washed. The remainder of the division from west Serena to the foot of Sandyland Cove Road is generally a wide fine to medium grain sand beach. The beach in this 2 mile segment narrows in two locations and is likely to be impassible at high tide at the SE end of Santa Claus Lane and at the mouth of Carpinteria Salt Marsh.

### **Division T Description**

This 3.6 mile stretch of shoreline is characterized by wide fine to medium grained sand beaches along the westernmost 1.5 mile segment from just west of Ash Street to just west of Dump Road in Carpinteria. From Dump Road and Casitas Pier, there is a 1.6 mile segment of narrow, often obstructed sandy shoreline. The beach widens for 0.4 mile near Rincon Beach Park to Rincon Creek mouth. There is a paved access road from Rincon Beach Park to the beach. The shoreline narrows around the Southern and Eastern exposures of Rincon Point and becomes wave-washed at most tides.



**SB-Div I**  
 Gaviota Pier South to  
 Refugio State Beach



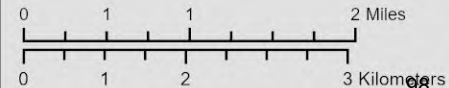
Calif. Dept. of Fish and Wildlife  
 Office of Spill Prevention and Response

Data Source: OSPR, CDFW  
 Author: OSPR, CDFW  
 Created: 1/22/2024

NAD\_1983\_California\_Teale\_Albers

ACP 4/5 Annex C

## Santa Barbara (SB) County Operational Division I Environmental Sensitive Sites





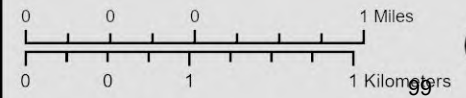
Calif. Dept. of Fish and Wildlife  
Office of Spill Prevention and Response

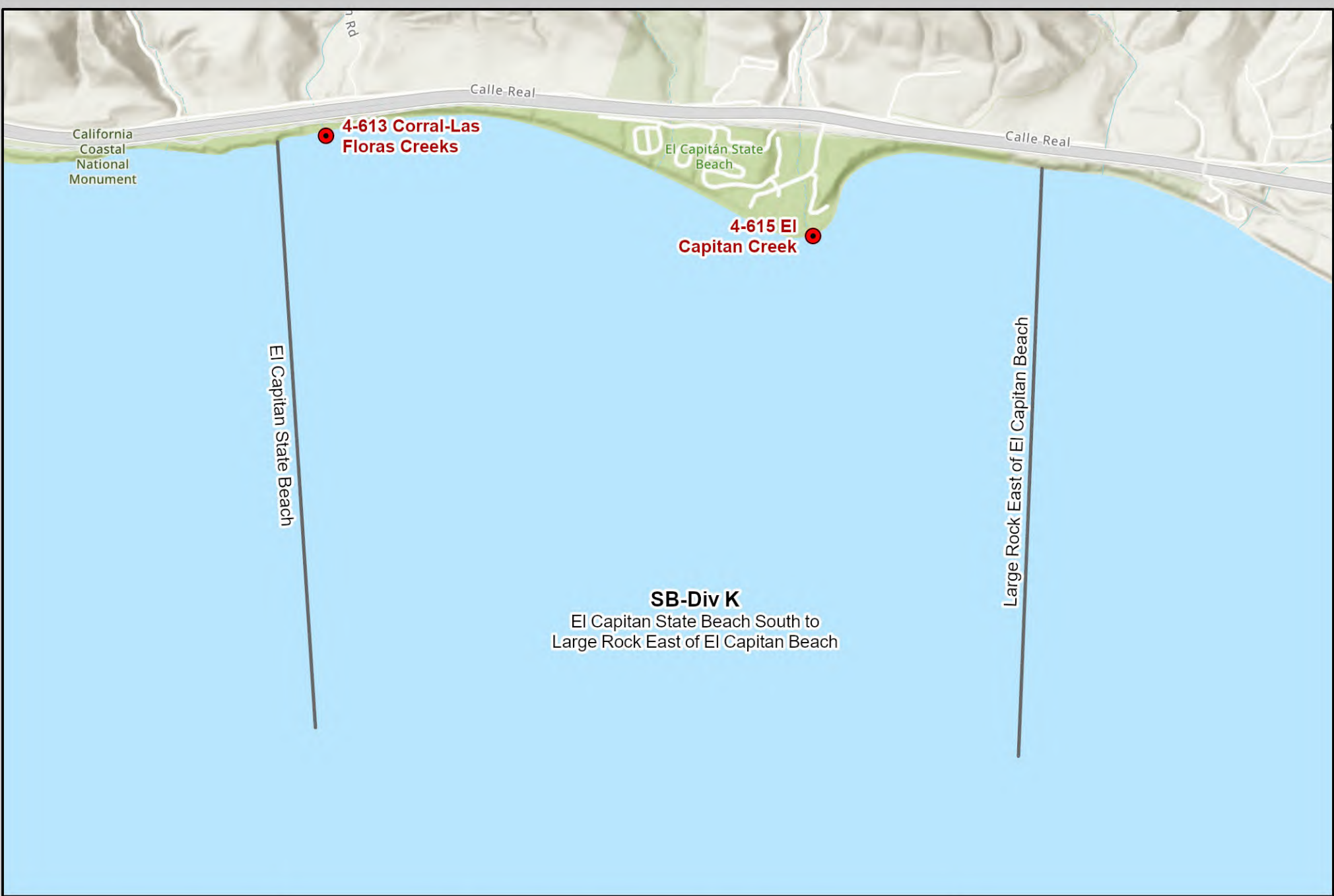
Data Source: OSPR, CDFW  
Author: OSPR, CDFW  
Created: 1/22/2024

NAD\_1983\_California\_Teale\_Albers

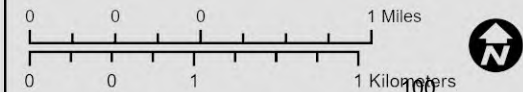
ACP 4/5 Annex C

## Santa Barbara (SB) County Operational Division J Environmental Sensitive Sites



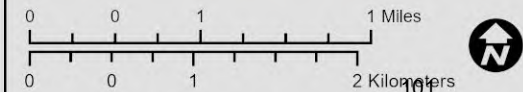


**Santa Barbara (SB) County**  
**Operational Division K**  
**Environmental Sensitive Sites**





**Santa Barbara (SB) County**  
**Operational Division L**  
**Environmental Sensitive Sites**







**SB-Div M**  
 West of Dos Pueblos  
 Creek South to Tecolote Creek

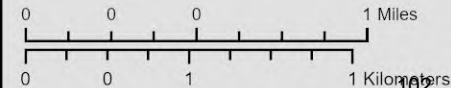


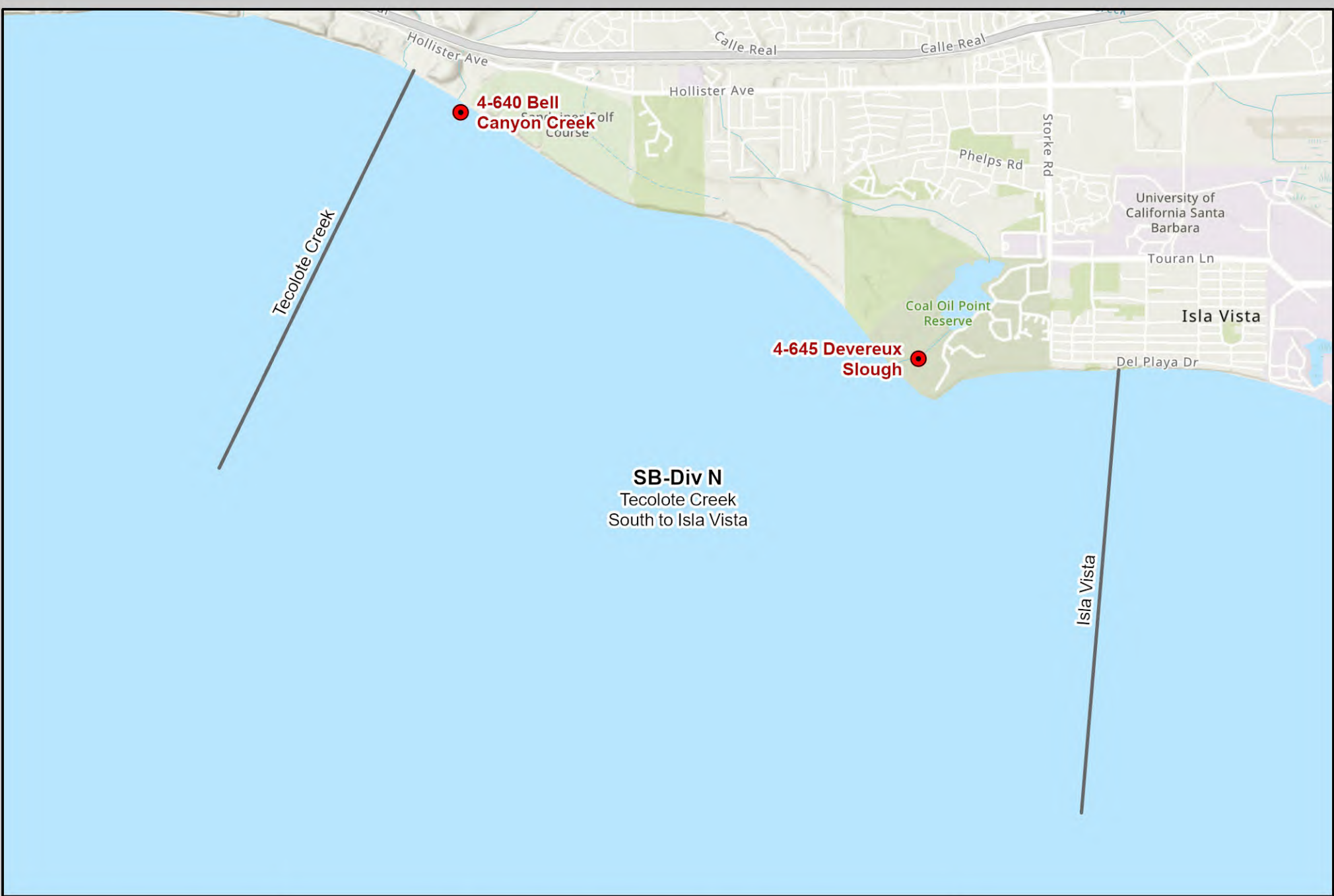
Calif. Dept. of Fish and Wildlife  
 Office of Spill Prevention and Response

Data Source: OSPR, CDFW  
 Author: OSPR, CDFW  
 Created: 1/29/2024

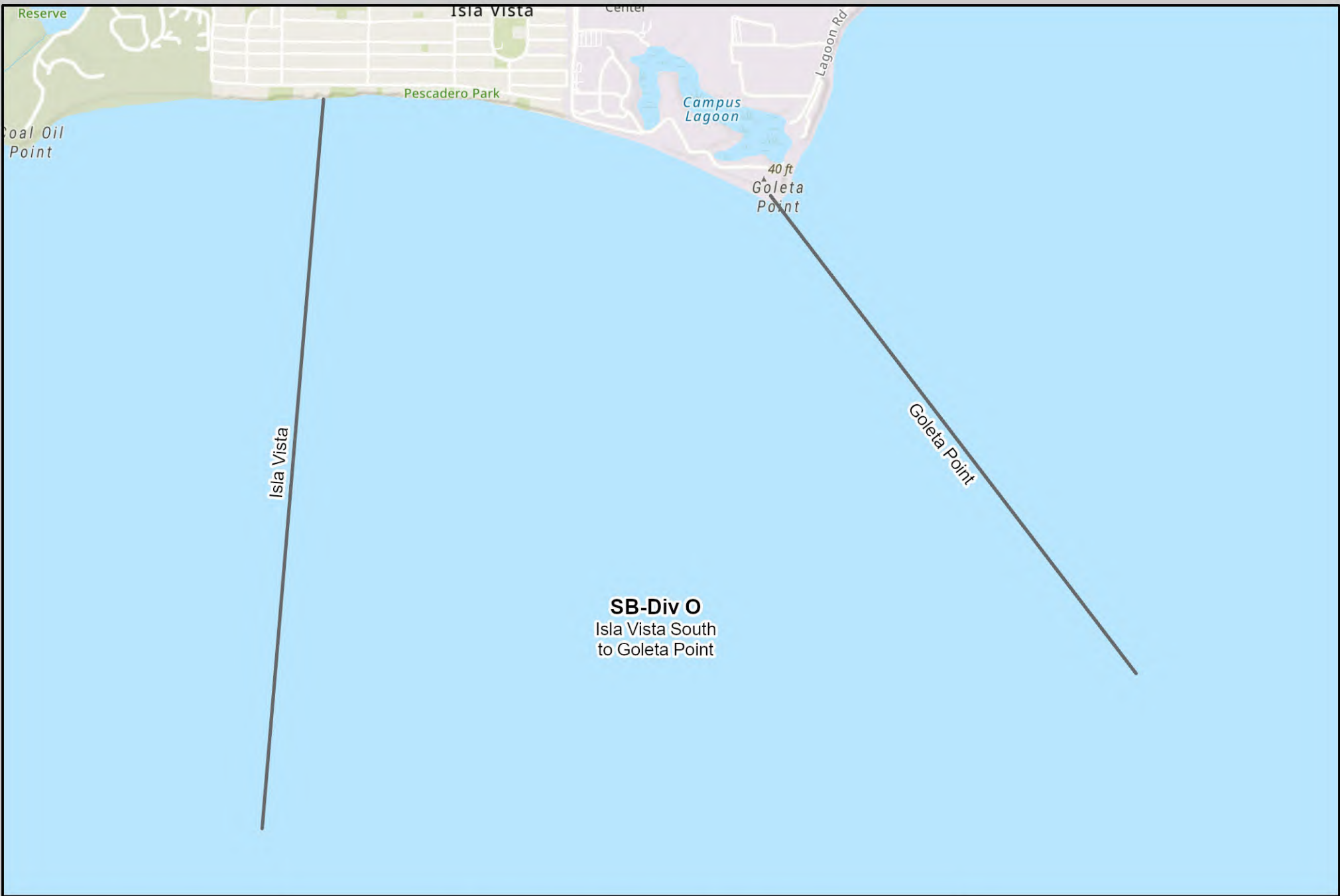
ACP 4/5 Annex C

## Santa Barbara (SB) County Operational Division M Environmental Sensitive Sites

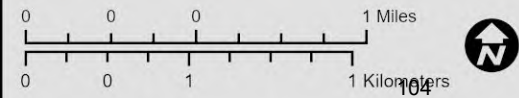




## Santa Barbara (SB) County Operational Division N Environmental Sensitive Sites

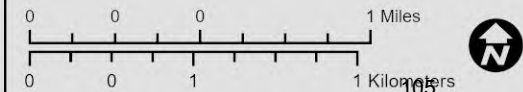


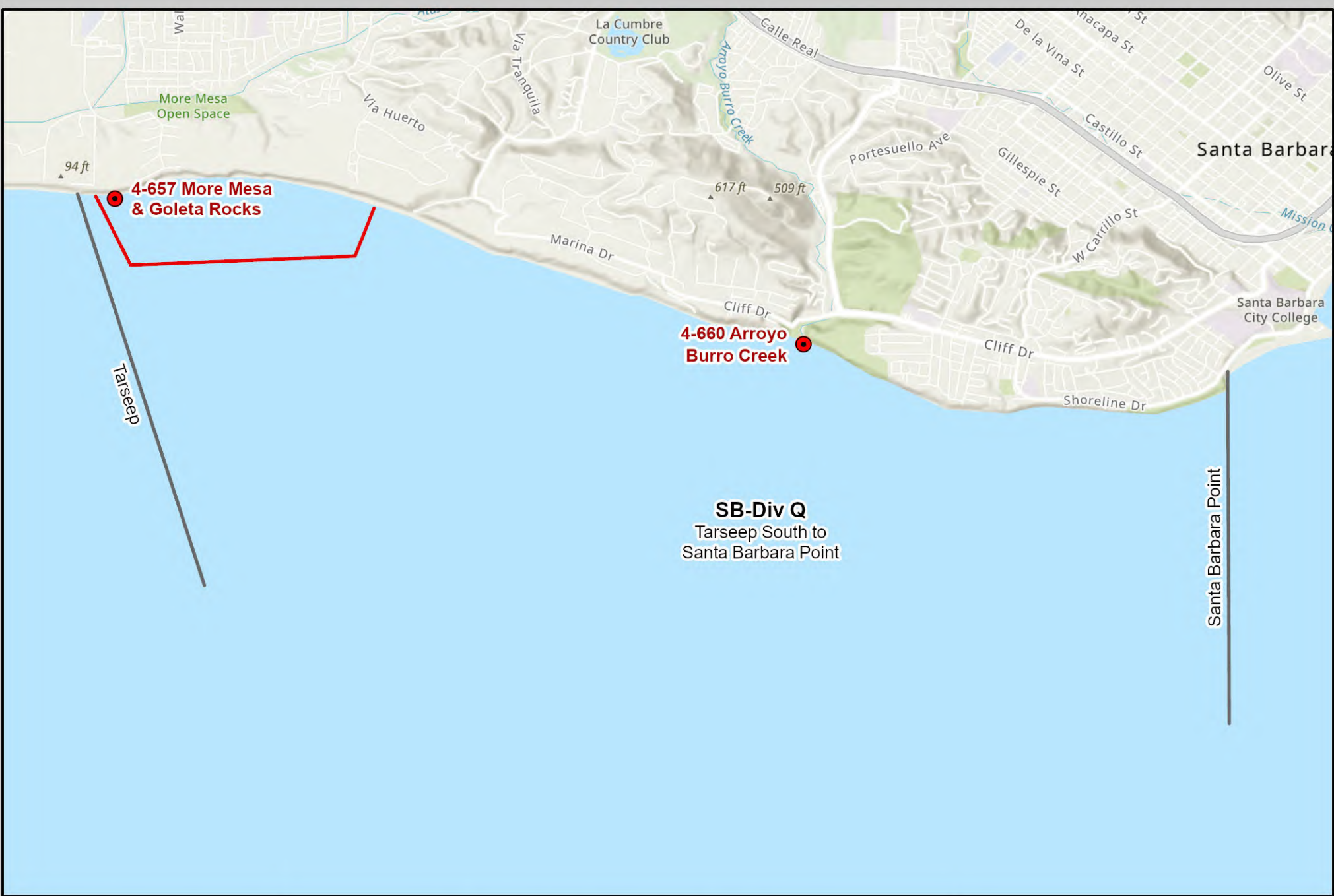
**Santa Barbara (SB) County**  
**Operational Division O**  
**Environmental Sensitive Sites**





## Santa Barbara (SB) County Operational Division P Environmental Sensitive Sites





**4-660 Arroyo  
Burro Creek**

**SB-Div Q**  
Tarseep South to  
Santa Barbara Point

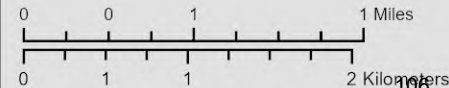


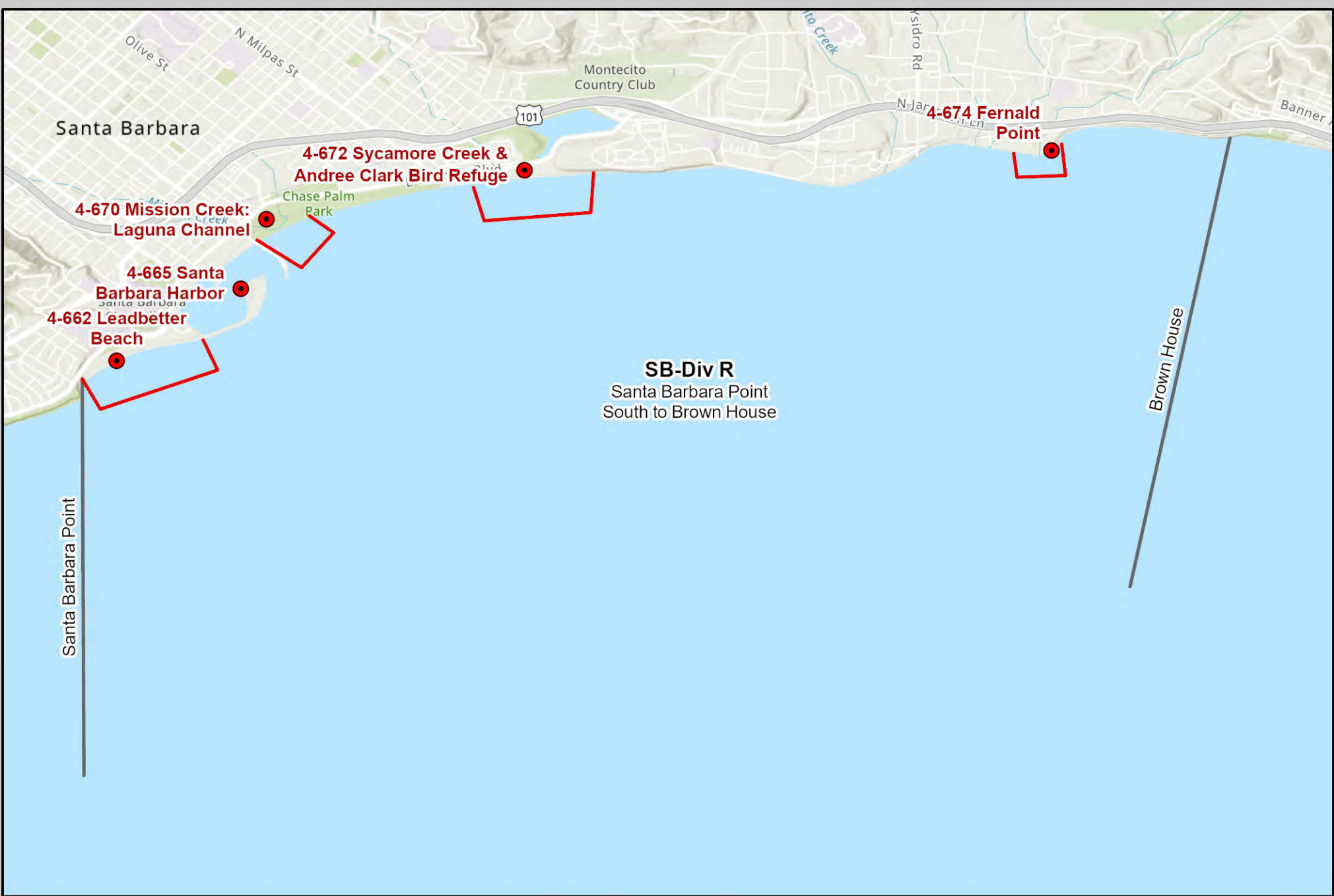
Calif. Dept. of Fish and Wildlife  
Office of Spill Prevention and Response

Data Source: OSPR, CDFW  
Author: OSPR, CDFW  
Created: 1/29/2024

ACP 4/5 Annex C

# Santa Barbara (SB) County Operational Division Q Environmental Sensitive Sites





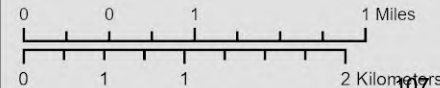
Calif. Dept. of Fish and Wildlife  
Office of Spill Prevention and Response

Data Source: OSPR, CDFW  
Author: OSPR, CDFW  
Created: 1/22/2024

NAD\_1983\_California\_Teale\_Albers

ACP 4/5 Annex C

## Santa Barbara (SB) County Operational Division R Environmental Sensitive Sites





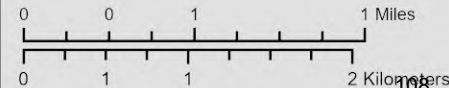
Calif. Dept. of Fish and Wildlife  
Office of Spill Prevention and Response

Data Source: OSPR, CDFW  
Author: OSPR, CDFW  
Created: 1/22/2024

NAD\_1983\_California\_Teale\_Albers

ACP 4/5 Annex C

## Santa Barbara (SB) County Operational Division S Environmental Sensitive Sites





**Santa Barbara (SB) County**  
**Operational Division T**  
**Environmental Sensitive Sites**

