



REGIONAL CONSERVATION INVESTMENT STRATEGY SUBPROGRAM

Public Webinar 2024

Ami Olson, Statewide RCIS Coordinator
California Department of Fish & Wildlife

Agenda

- What is the RCIS Program?
- What is the RCIS Subprogram?
 - RCIS Benefits and Considerations
 - Development, Review, & Approval Timelines and Requirements
 - Available Funding
- For More Information...



The RCIS Program's 3 Subprograms

- **Regional Conservation Assessment (RCA)**
 - *Ecoregional conditions assessment*
- **Regional Conservation Investment Strategy (RCIS)**
 - *Regional conditions assessment*
 - *Conservation strategy (goals, objectives, actions, and priorities)*
- **Mitigation Credit Agreement (MCA)**
 - *One option for implementing RCIS actions*
 - *Advance mitigation credits to offset CESA, CEQA, LSA Agreement, & other impacts*



The RCIS Program's 3 Subprograms

- **Regional Conservation Assessment (RCA)**
 - *Ecoregional conditions assessment*
- **Regional Conservation Investment Strategy (RCIS)**
 - *Regional conditions assessment*
 - *Conservation strategy (goals, objectives, actions, and priorities)*
- **Mitigation Credit Agreement (MCA)**
 - *One option for implementing RCIS actions*
 - *Advance mitigation credits to offset CESA, CEQA, LSA Agreement, & other impacts*



RCIS Uses

- Enable the creation of mitigation credits through an MCA
- Identify possible locations for mitigation
- Identify possible conservation projects
- Often make grant applications more competitive
- Identify needed research
- Assist in identifying possible development areas
- Help address other local issues/needs

RCIS Facts

- Identify, and provide guidance for, the sensitive biological resource in the area
- Developed using best available information
- Prepared by a public agency or federally recognized tribe
- Developed with input from interested parties and the public
- Public document; may be used by anyone

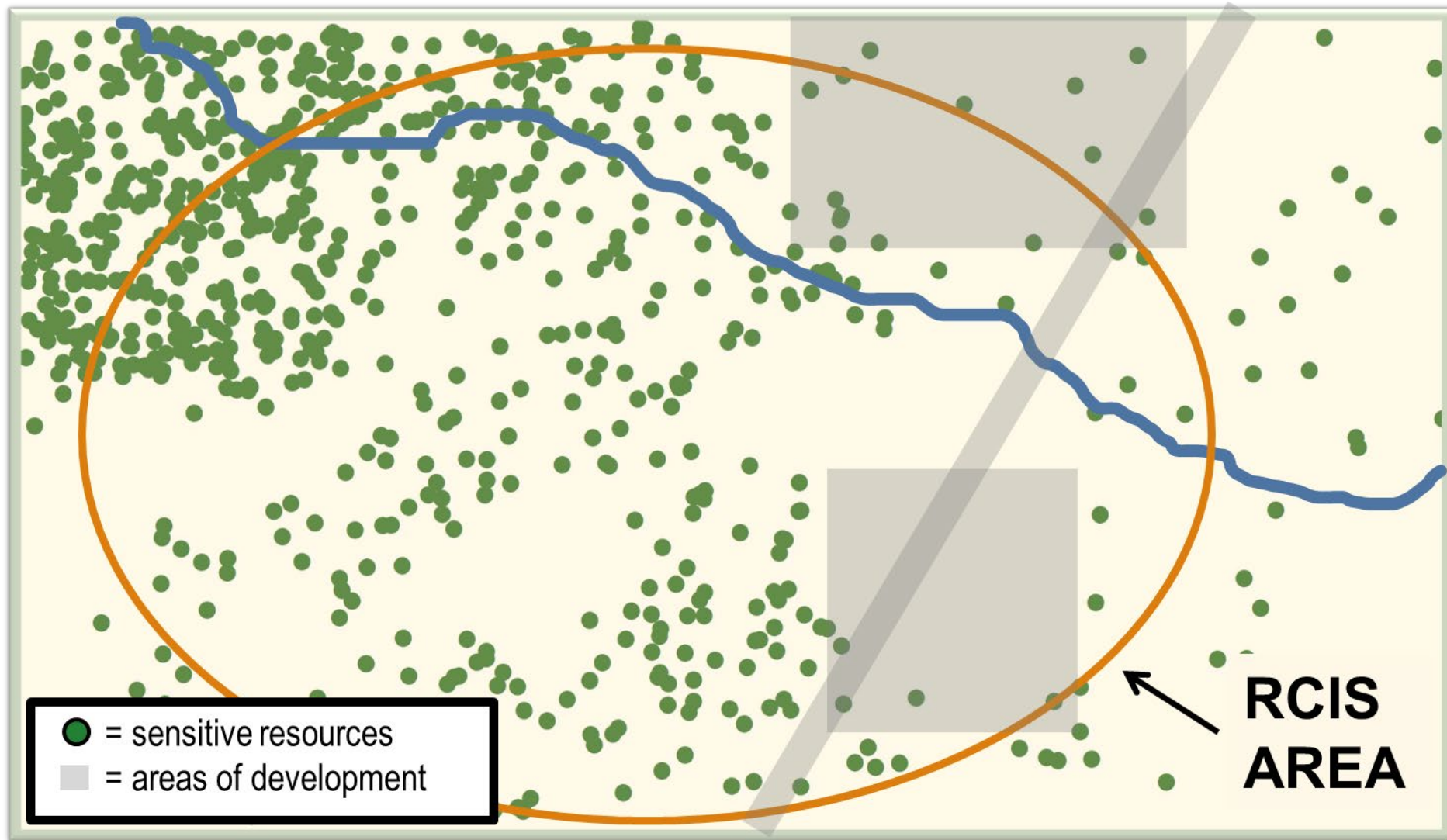


Important RCIS Terms

- **RCIS Proponent** – Public agency or federally recognized tribe proposing the RCIS.
- **Focal Species** – Species discussed in detail in an RCIS. Have their own goals, objectives, actions, and priorities. Eligible for MCA credits.
- **Other Conservation Elements** (OCEs) – Important biological resources or processes in the RCIS area. Have their own goals, objectives, actions, and priorities. Eligible for MCA credits.
- **Non-focal Species** (AKA Associated Species) – Not required. Strongly associated with focal species and/or other conservation elements. Rely on strategies for associated focal species and OCEs. Eligible for MCA credits.

Note: “Conservation Species,” “Co-benefited Species,” “Non-focal OCEs” – Not official in the program and not eligible for MCA credits.

RCIS Regional Conditions Assessment

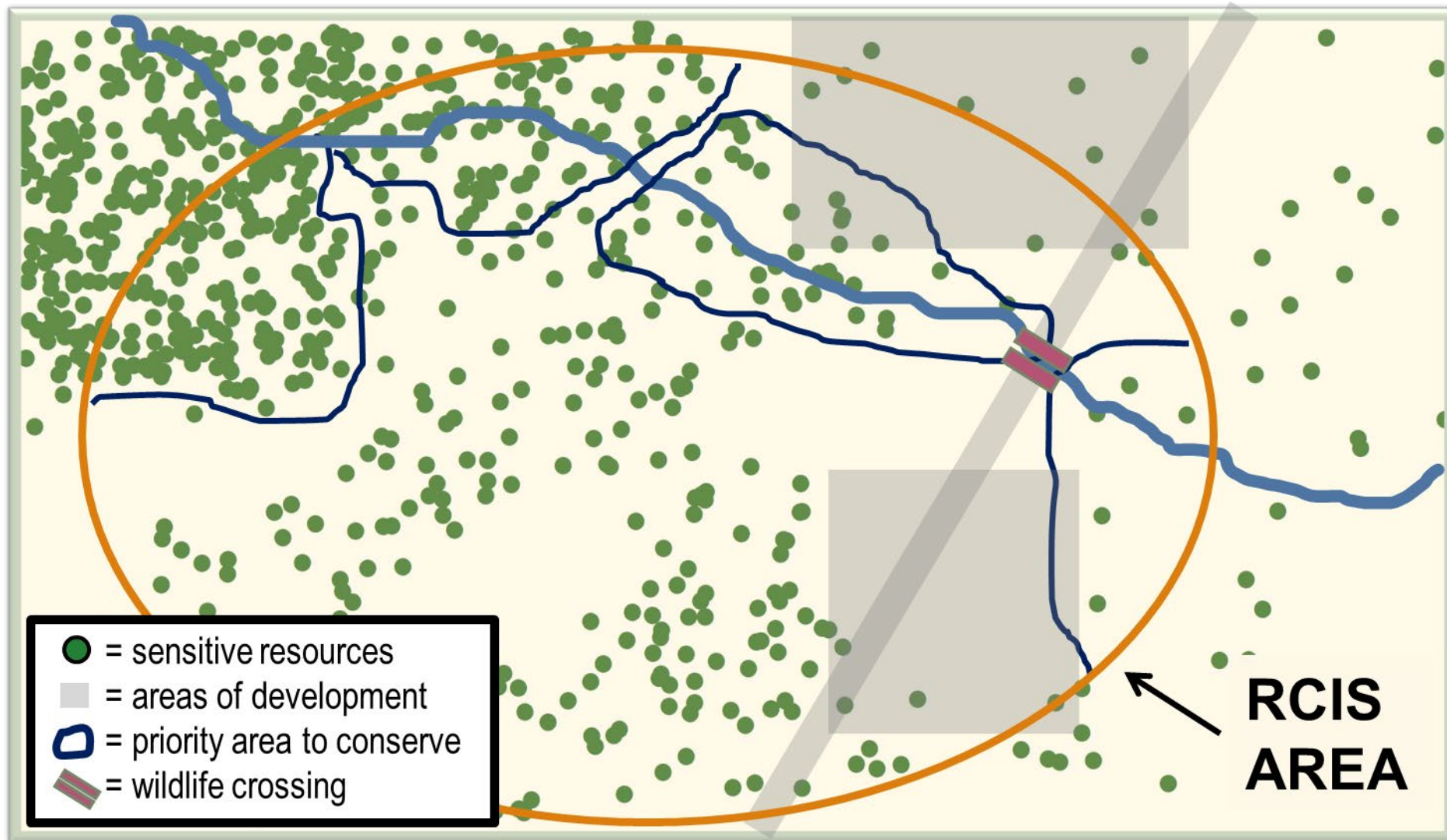




RCIS Regional Conditions

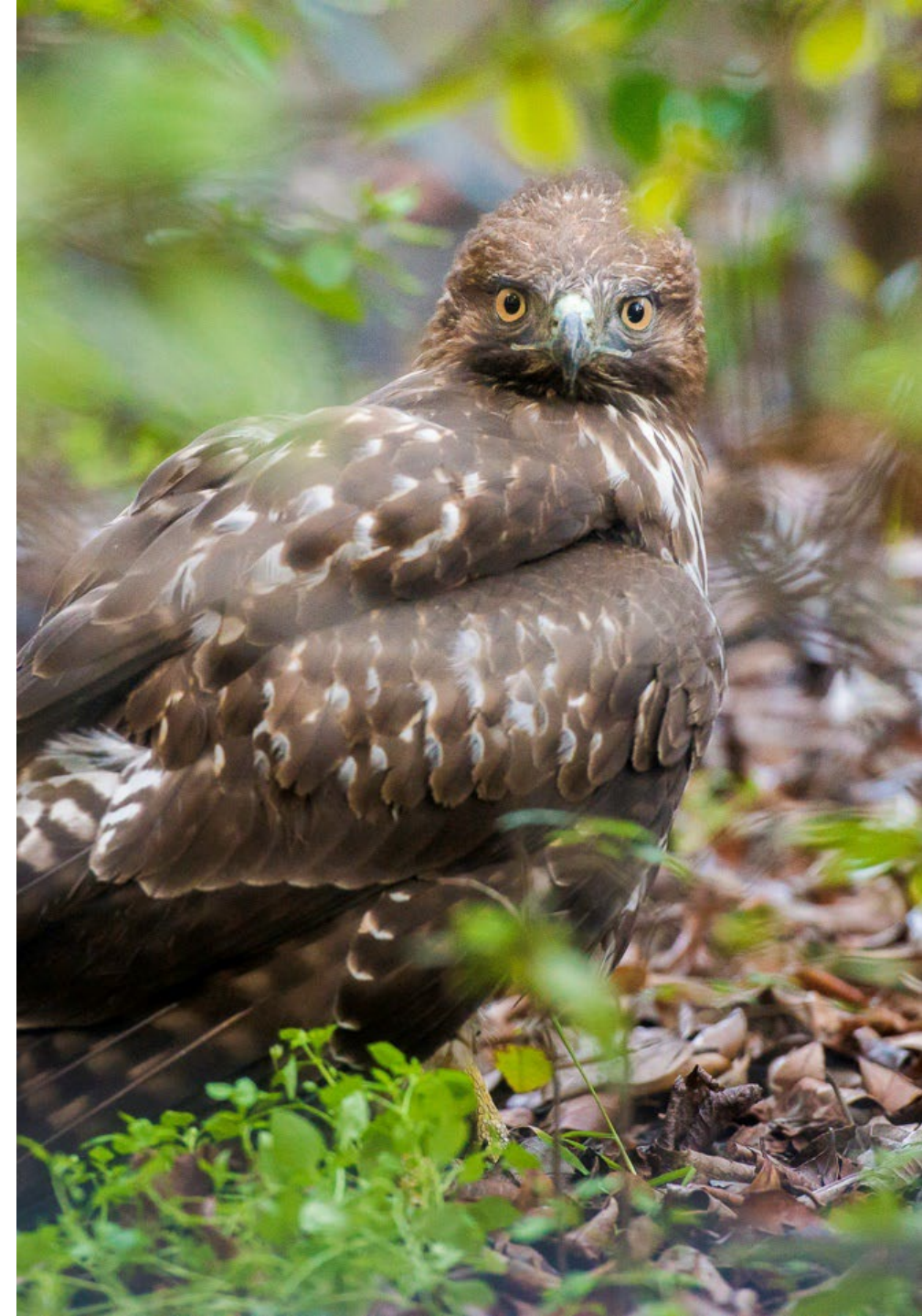
- Existing habitats/land cover types
- Occurrence information for focal species and other conservation elements (OCEs)
- Existing protected areas
- Wildlife movement corridors
- Existing & foreseeable future development
- Pressures and stressors, including climate change
- Gaps in scientific information

RCIS Strategy with Priorities

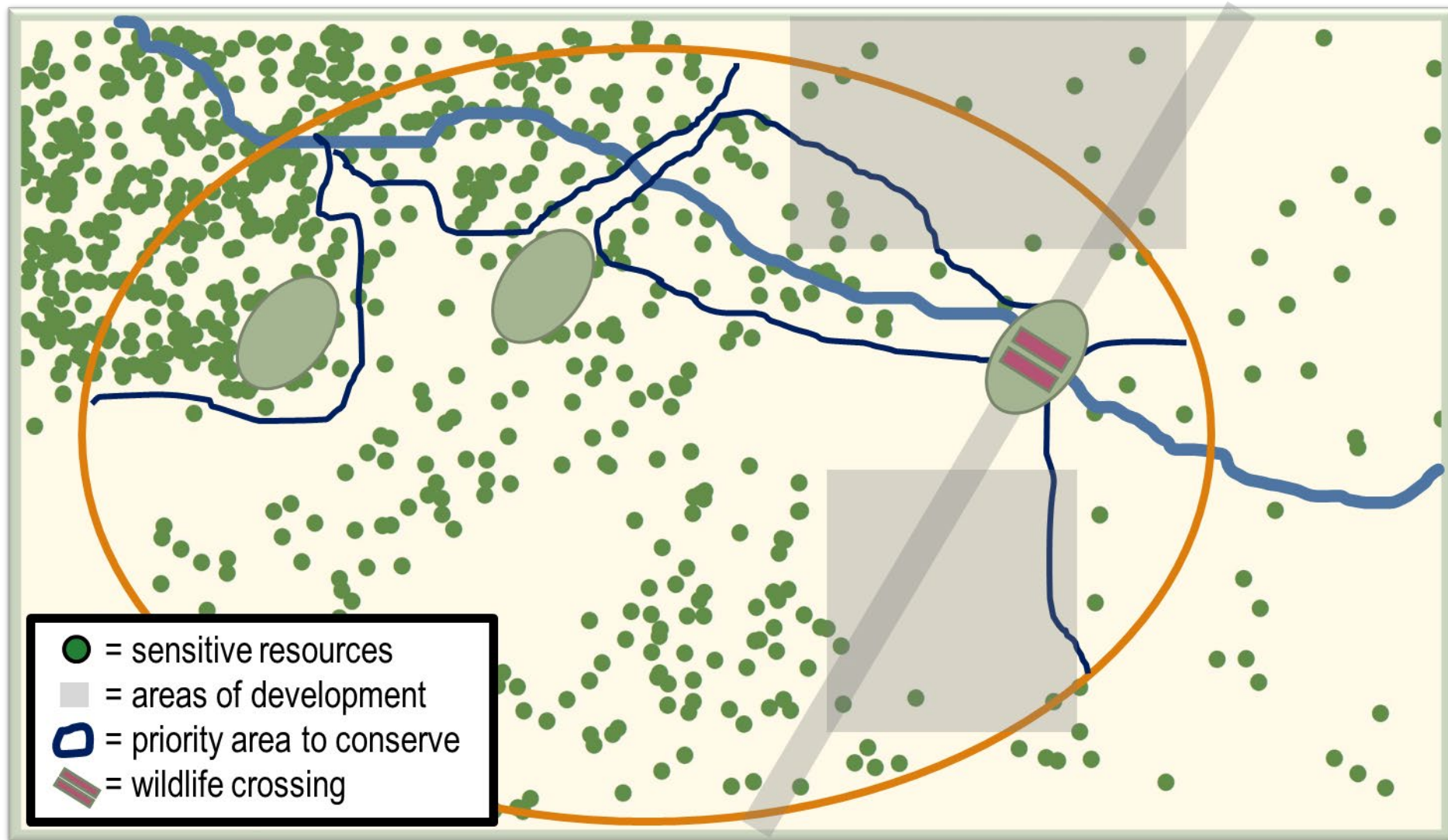


RCIS Strategy

- Includes goals, objectives, actions, and priorities for focal species and OCEs
- Addresses the area's pressures and stressors
- Addresses the area's conservation needs, not just mitigation needs
- Not parcel-specific
- Address gaps in scientific information
- Considers the ecological benefits of working lands



RCIS Implementation





Mitigation Credit Agreement (MCA)

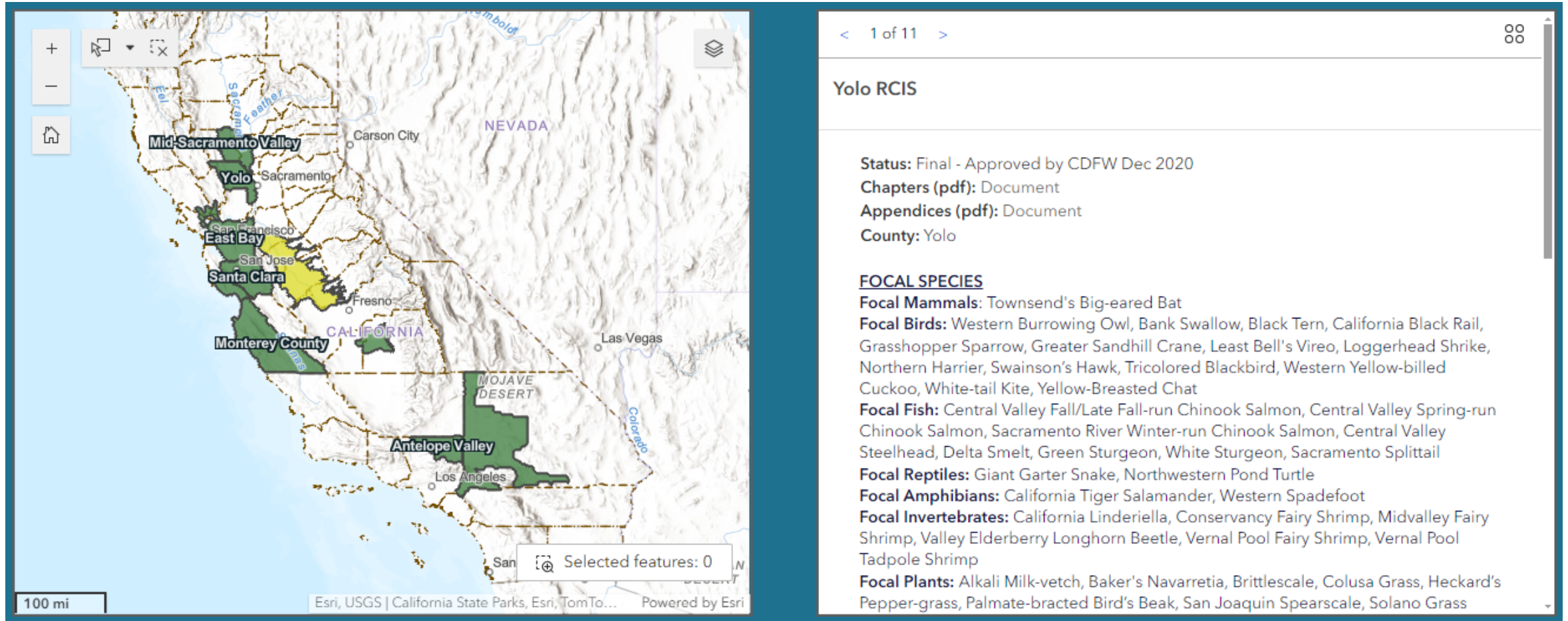
- May be developed by anyone
- Focal species, non-focal species, and OCEs eligible for credits
- Implements actions within an RCIS
- Results in advance mitigation credits similar to a conservation/mitigation bank, with flexibilities
 - Non-permanent credits
 - Credits for excess mitigation
 - Framework MCA

Current Status of RCISs

RCIS	Proponent	Status
Santa Clara County	Santa Clara Valley Open Space Authority	Approved
Yolo	Yolo Habitat Conservancy & DWR	Approved
Mid-Sac Valley	Reclamation District 108	Approved
East Bay	California State Coastal Conservancy	Approved
Antelope Valley	Desert Mountains Conservation Authority	Approved
Monterey County	Transportation Agency for Monterey County	Approved
Kaweah Subbasin	East Kaweah Groundwater Sustainability Agency	Approved
Santa Cruz County	Santa Cruz County Regional Transportation Commission	Approved
San Bernardino County	San Bernardino County Transportation Authority	Approved
North Bay Baylands	Metropolitan Transportation Commission	Approved
San Joaquin Basin	Reclamation District 2092 (River Partners)	In development



RCIS Interactive Map



The screenshot displays the RCIS Interactive Map interface. On the left is a map of California with several regions highlighted in green: Mid-Sacramento Valley, Yolo, East Bay, Santa Clara, Monterey County, and Antelope Valley. The map includes a scale bar for 100 miles and a legend indicating 'Selected features: 0'. On the right is a sidebar for the 'Yolo RCIS'. The sidebar shows the status as 'Final - Approved by CDFW Dec 2020', links to 'Chapters (pdf): Document' and 'Appendices (pdf): Document', and lists the 'County: Yolo'. Below this, under the heading 'FOCAL SPECIES', are lists for Focal Mammals, Focal Birds, Focal Fish, Focal Reptiles, Focal Amphibians, Focal Invertebrates, and Focal Plants.

Yolo RCIS

Status: Final - Approved by CDFW Dec 2020
Chapters (pdf): Document
Appendices (pdf): Document
County: Yolo

FOCAL SPECIES

Focal Mammals: Townsend's Big-eared Bat

Focal Birds: Western Burrowing Owl, Bank Swallow, Black Tern, California Black Rail, Grasshopper Sparrow, Greater Sandhill Crane, Least Bell's Vireo, Loggerhead Shrike, Northern Harrier, Swainson's Hawk, Tricolored Blackbird, Western Yellow-billed Cuckoo, White-tail Kite, Yellow-Breasted Chat

Focal Fish: Central Valley Fall/Late Fall-run Chinook Salmon, Central Valley Spring-run Chinook Salmon, Sacramento River Winter-run Chinook Salmon, Central Valley Steelhead, Delta Smelt, Green Sturgeon, White Sturgeon, Sacramento Splittail

Focal Reptiles: Giant Garter Snake, Northwestern Pond Turtle

Focal Amphibians: California Tiger Salamander, Western Spadefoot

Focal Invertebrates: California Linderella, Conservancy Fairy Shrimp, Midvalley Fairy Shrimp, Valley Elderberry Longhorn Beetle, Vernal Pool Fairy Shrimp, Vernal Pool Tadpole Shrimp

Focal Plants: Alkali Milk-vetch, Baker's Navarretia, Brittsescale, Colusa Grass, Heckard's Pepper-grass, Palmate-bracted Bird's Beak, San Joaquin Spearscale, Solano Grass

[RCIS Interactive Map](#)

Additional RCIS Facts

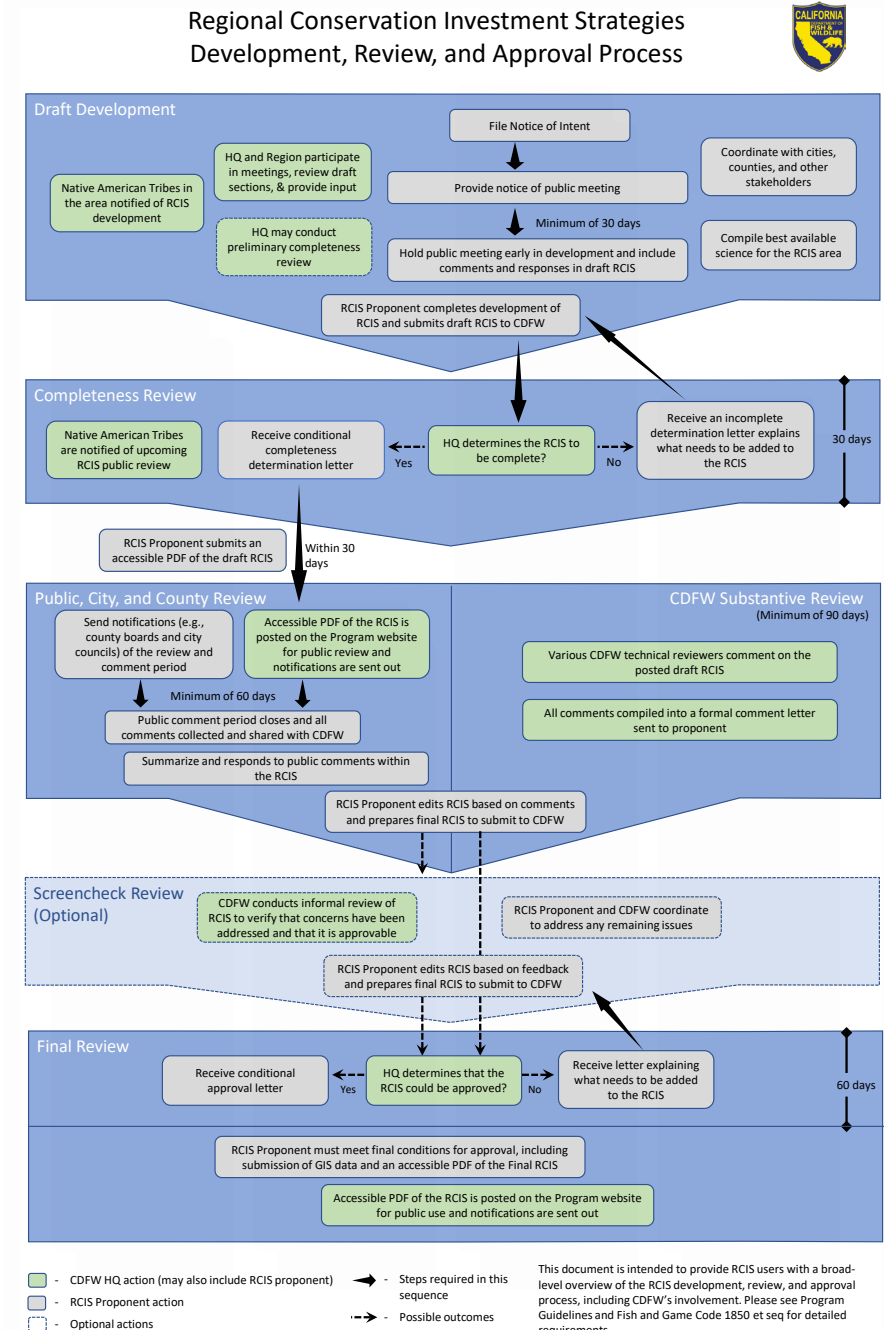
- No conservation commitment
- Non-binding on land use authority
- Does not result in permits or approvals for actions
- Can overlap with an NCCP
- Boundary not limited by land ownership or jurisdiction
- Can NOT overlap another RCIS
- 10-year term; can be extended



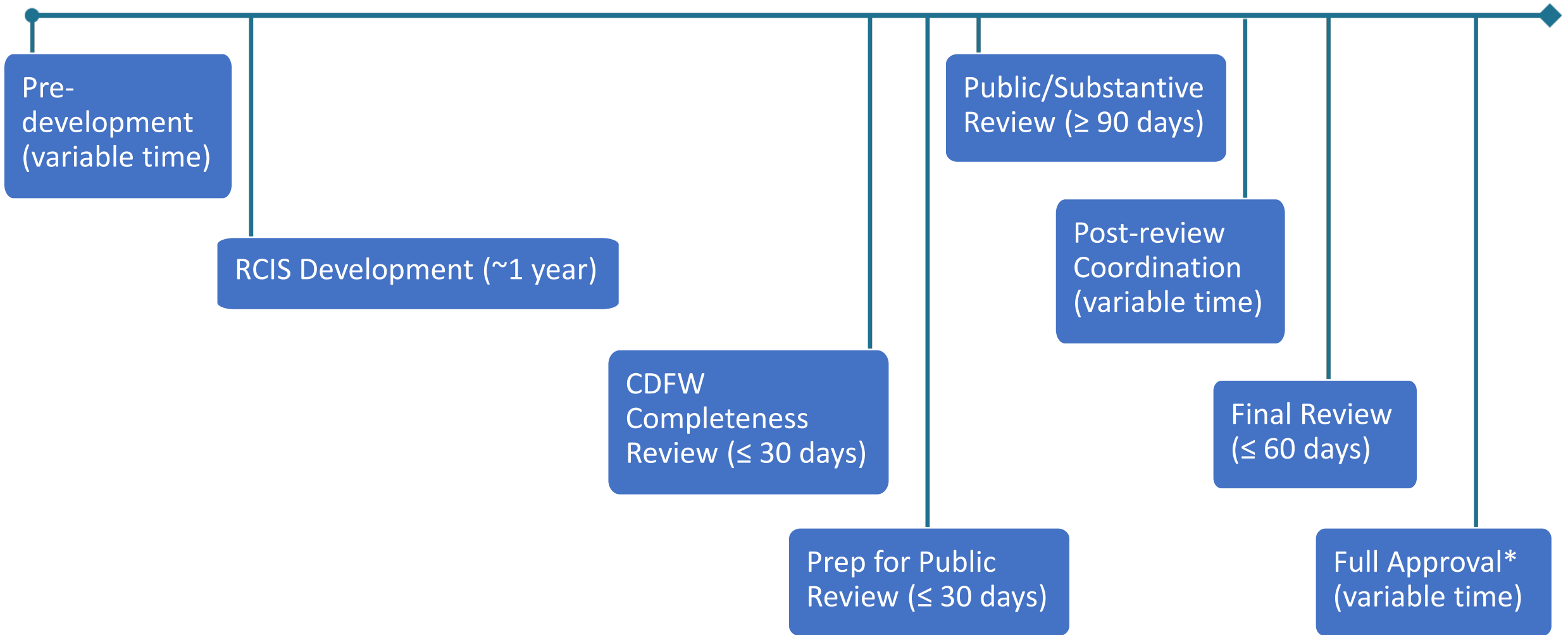
RCIS Requirements

Fish & Game Code 1850-1860 & RCIS Program Guidelines (Section 4)

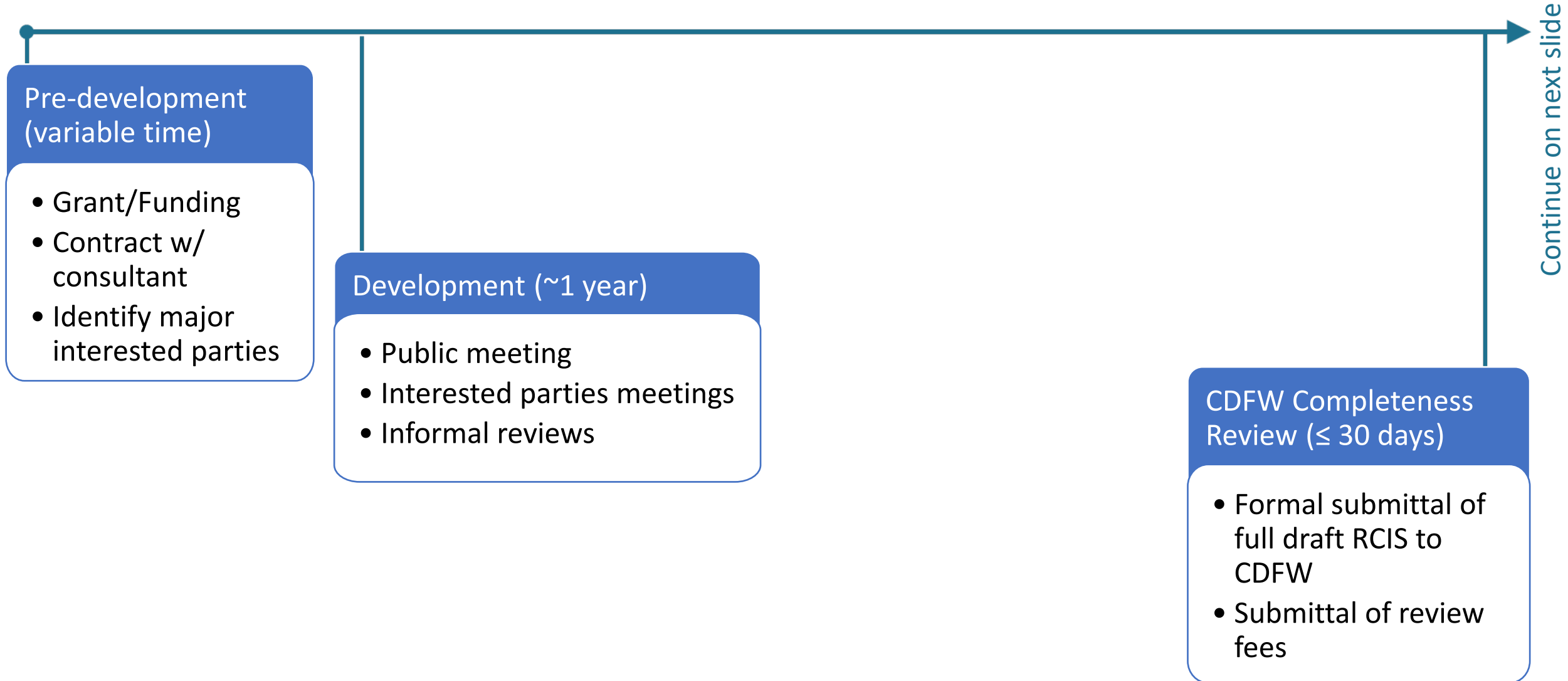
- Required document content
- Local land use authority involvement
- Interested parties involvement
- Public meeting
- Public review period
- CDFW review



RCIS Development Timeline (2~3 years)

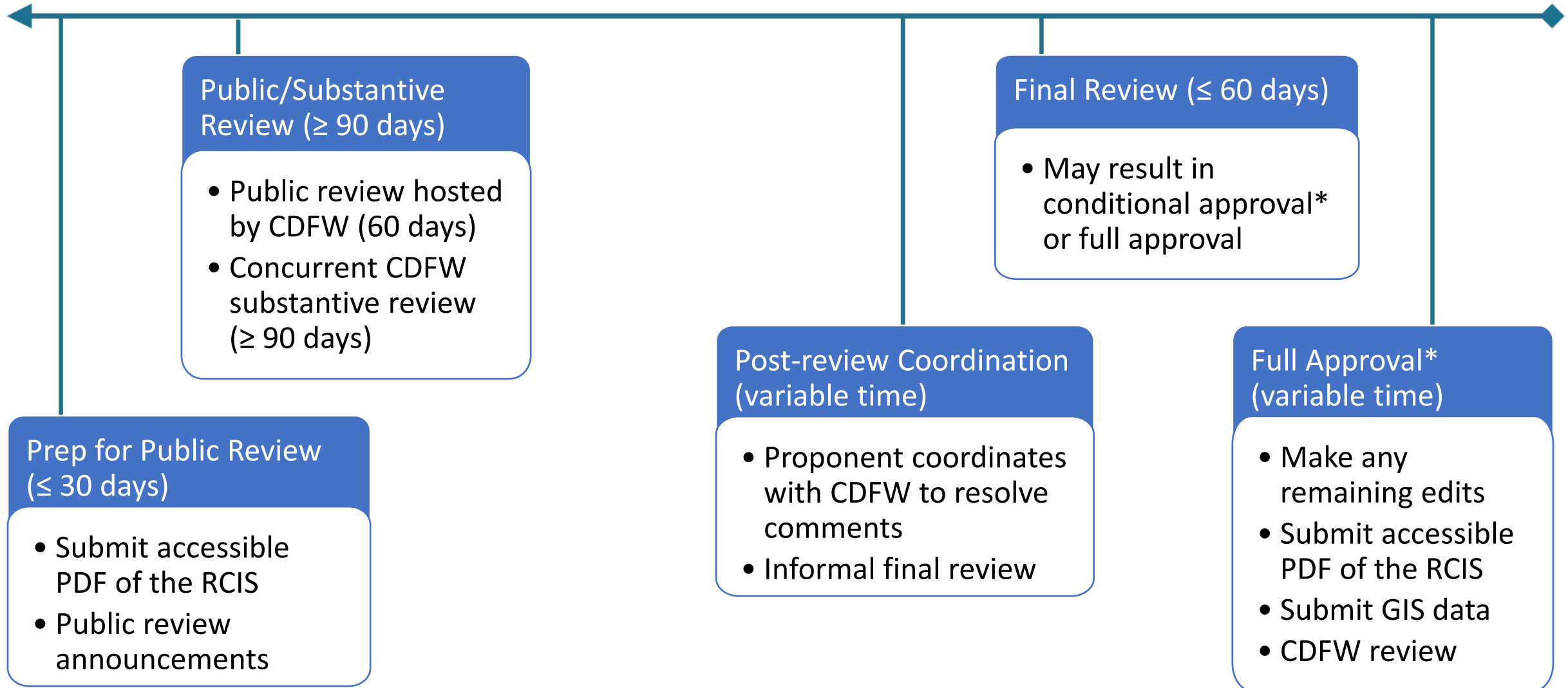


RCIS Development Timeline (2~3 years)



RCIS Development Timeline (2~3 years)

Continue on prior slide



Wildlife Conservation Board Funding for RCISs

wcb.ca.gov/Grants

- \$1.6 million for RCIS development
- Other grant funds may be used for [Non-MCA] implementation

Shannon Lucas

WCB Restoration Supervisor

Shannon.Lucas@wildlife.ca.gov



For Further RCIS Program Information

Please visit: www.wildlife.ca.gov/Conservation/Planning/Regional-Conservation

- Links to RCIS and MCA Subprogram pages
- Link to join the RCIS Program Notifications List
- Recordings of the Advance Mitigation (MCA and Banking) and CAM Public Webinars (coming soon)
- FAQ and other resources

RCIS Subprogram Contacts:

Ami Olson, RCIS Coordinator

Karen Weiss, Environmental Program
Manager

MCA Subprogram Contacts:

Brandon Amrhein, MCA Coordinator

Suzanne Gilmore, Sr. ES, Supervisor

Email us at: rcis@wildlife.ca.gov