



REGIONAL CONSERVATION INVESTMENT STRATEGY SUBPROGRAM

Tribal Outreach

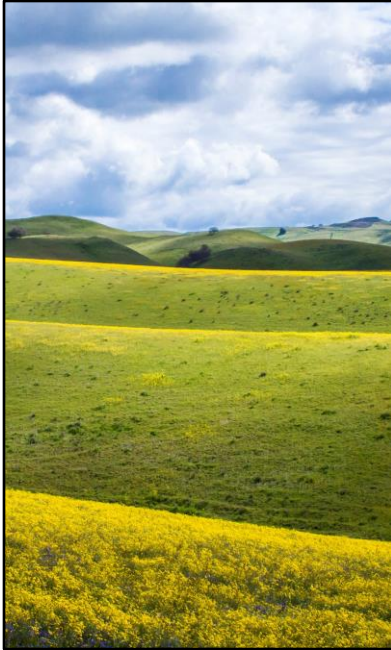
PRESENTED BY

Ami Olson, Statewide RCIS Coordinator
California Department of Fish & Wildlife

Goal for talk: To inform tribes about the opportunity to participate in the RCIS Program and to provide tribes with a broad understanding of the uses and benefits of the program.

Agenda

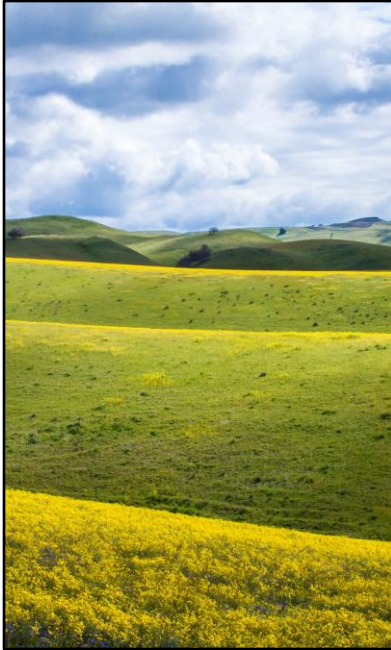
- What is the RCIS Program?
- What is the RCIS Subprogram?
 - Benefits and Considerations for an RCIS
 - Development, Review, & Approval Timelines and Requirements
 - Available Funding
- For More Information...
 - Follow-up Virtual Meetings



The RCIS Program's 3 Subprograms

- **Regional Conservation Assessment (RCA)**
 - *Ecoregional conditions assessment*
- **Regional Conservation Investment Strategy (RCIS)**
 - *Regional conditions assessment*
 - *Conservation strategy (goals, objectives, actions, and priorities)*
- **Mitigation Credit Agreement (MCA)**
 - *One option for implementing RCIS actions*
 - *Advance mitigation credits to offset CESA, CEQA, LSA Agreement, & other impacts*

The Regional Conservation Investment Strategies Program includes 3 Subprograms. Please note, MCAs can only be developed in areas where there is an approved RCIS.



The RCIS Program's 3 Subprograms

- **Regional Conservation Assessment (RCA)**
 - *Ecoregional conditions assessment*
- **Regional Conservation Investment Strategy (RCIS)**
 - *Regional conditions assessment*
 - *Conservation strategy (goals, objectives, actions, and priorities)*
- **Mitigation Credit Agreement (MCA)**
 - *One option for implementing RCIS actions*
 - *Advance mitigation credits to offset CESA, CEQA, LSA Agreement, & other impacts*

This presentation focuses specifically on the RCIS Subprogram.



RCIS Uses

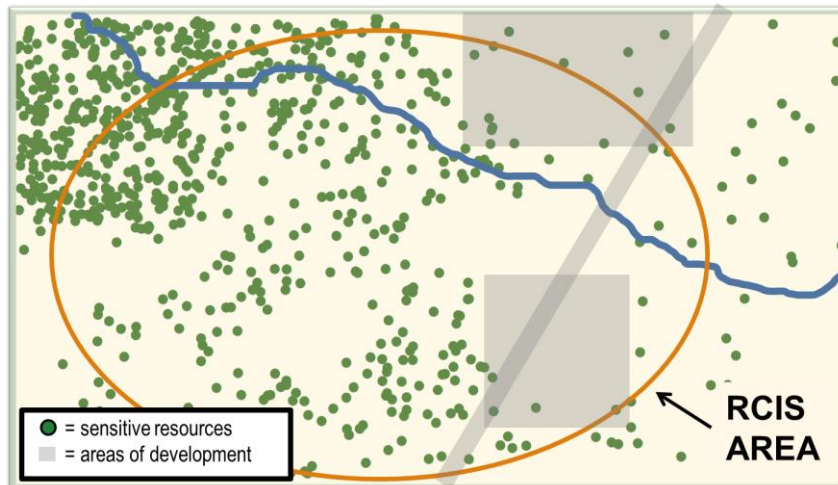
- Call attention to conservation needs of the area
- Identify possible restoration projects
- Often makes grant applications more competitive
- Identify needed research
- Help address other local issues/needs
- Enable the creation of mitigation credits through an MCA

RCIS Facts

- Identifies, and provides guidance for, the sensitive biological resource in the area
- Developed using best available information
- Prepared by a public entity or federally recognized tribe
- Developed with input from California Native American Tribes, interested parties, and public
- Public document; may be used by anyone

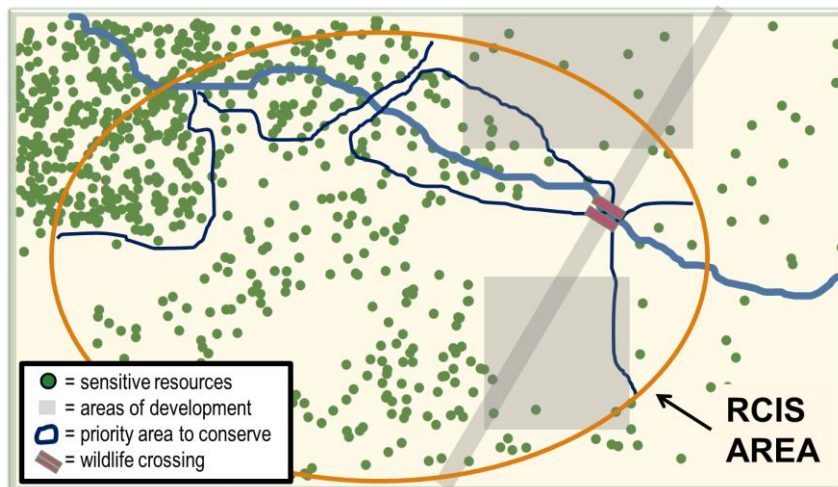


RCIS Regional Conditions Assessment



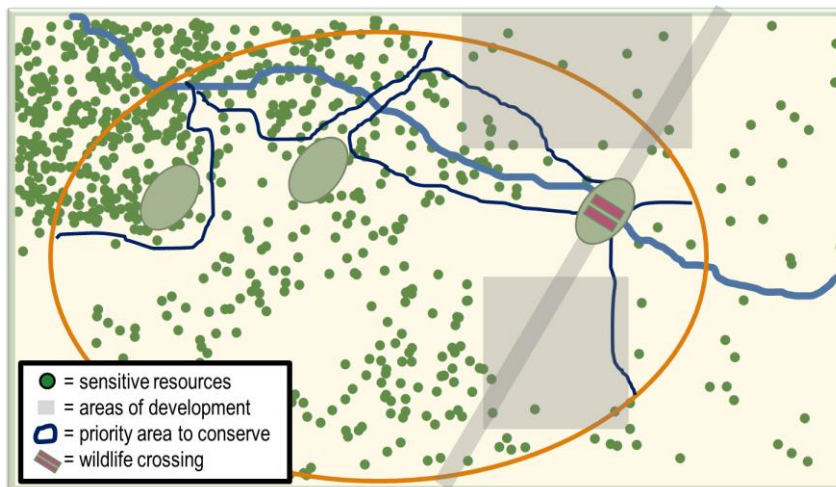
An RCIS includes two main sections of the document. The first main section is the regional conditions assessment, which uses the best available scientific information to identify the sensitive species and biological resources that are present within the RCIS area. Additionally, available information, such as city or county general plans, is used to identify areas of development and infrastructure within the RCIS area. No new surveys, studies, or modeling is required to develop the regional conditions assessment.

RCIS Strategy with Priorities



The second main section of the RCIS is the strategy, which includes goals, objectives, actions, and priorities for the sensitive species and resources within the RCIS area. The strategy provides guidance for the types and locations of actions needed in the RCIS area that could result in effective, efficient conservation. This guidance is the end result of RCIS development. The RCIS then becomes a public document that may be used and implemented by anyone. Implementation of RCIS actions would then be a separate project.

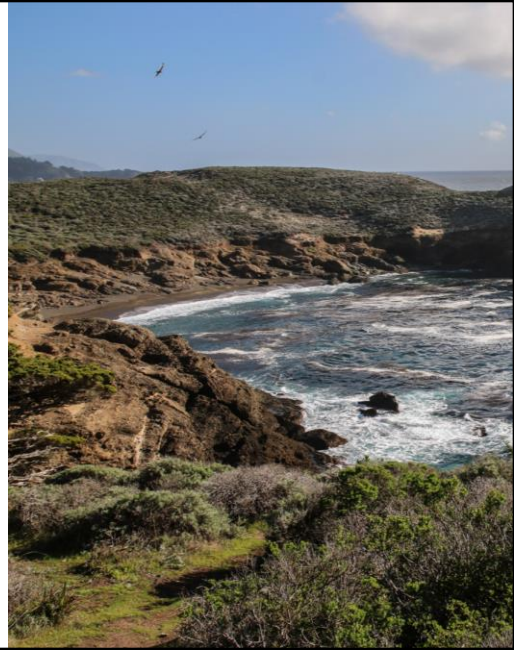
RCIS Implementation



The goal of the RCIS Program is for many people/entities to then use the RCIS to identify what types of conservation actions they should implement (and where). Ideally, the projects would be implemented within priority areas (represented by the right and left green ovals). However, the RCIS does not restrict land use in any way; therefore, projects could still be implemented outside of priority areas (represented by the middle green oval).

Additional RCIS Facts

- Voluntary to develop & to implement
- Non-binding on land use authority
- Does not result in permits or approvals for actions
- Boundary not limited by land ownership or jurisdiction
- Can NOT overlap another RCIS
- 10-year term; can be extended



Current Status of RCISs

RCIS	Proponent	Status
Santa Clara County	Santa Clara Valley Open Space Authority	Approved
Yolo	Yolo Habitat Conservancy & DWR	Approved
Mid-Sac Valley	Reclamation District 108	Approved
East Bay	California State Coastal Conservancy	Approved
Antelope Valley	Desert Mountains Conservation Authority	Approved
Monterey County	Transportation Agency for Monterey County	Approved
Kaweah Subbasin	East Kaweah Groundwater Sustainability Agency	Approved
Santa Cruz County	Santa Cruz County Regional Transportation Commission	Approved
San Bernardino County	San Bernardino County Transportation Authority	Approved
North Bay Baylands	Metropolitan Transportation Commission	Approved
San Joaquin Basin	Reclamation District 2092 (River Partners)	In development



Within Areas of Approved & Draft RCISs

➤ Approved RCISs (green areas)

- Any Native American Tribe may implement an RCIS action
- Grant funding may be available, depending on the action

➤ Draft RCIS (yellow area)

- Still opportunities to review and comment (e.g., public review period expected to start in February)



Within Areas Lacking RCISs

➤ No Current RCISs (white areas)

- Federally recognized tribes may propose an RCIS
- Any tribe may participate in the development
- Must be developed in coordination with local interested parties and with public review
- RCIS boundary is not restricted by land ownership
- RCIS must address species and biological resources that have conservation needs in the area
- Becomes a public document (should not include specific sensitive information)



RCIS Interactive Map

The screenshot shows a web-based interactive map of California. The map highlights several regions: Mid-Sacramento Valley, Yolo, East Bay, Santa Clara, Monterey County, and Antelope Valley. A sidebar on the right provides details for the selected 'Yolo RCIS'.

Yolo RCIS

Status: Final - Approved by CDFW Dec 2020
Chapters (pdf): Document
Appendices (pdf): Document
County: Yolo

FOCAL SPECIES

Focal Mammals: Townsend's Big-eared Bat
Focal Birds: Western Burrowing Owl, Bank Swallow, Black Tern, California Black Rail, Grasshopper Sparrow, Greater Sandhill Crane, Least Bell's Vireo, Loggerhead Shrike, Northern Harrier, Swainson's Hawk, Tricolored Blackbird, Western Yellow-billed Cuckoo, White-tail Kite, Yellow-Breasted Chat
Focal Fish: Central Valley Fall/Late Fall-run Chinook Salmon, Central Valley Spring-run Chinook Salmon, Sacramento River Winter-run Chinook Salmon, Central Valley Steelhead, Delta Smelt, Green Sturgeon, White Sturgeon, Sacramento Splittail
Focal Reptiles: Giant Garter Snake, Northwestern Pond Turtle
Focal Amphibians: California Tiger Salamander, Western Spadefoot
Focal Invertebrates: California Linderiella, Conservancy Fairy Shrimp, Midvalley Fairy Shrimp, Valley Elderberry Longhorn Beetle, Vernal Pool Fairy Shrimp, Vernal Pool Tadpole Shrimp
Focal Plants: Alkali Milk-vetch, Baker's Navarretia, Brittle-scale, Colusa Grass, Heckard's Pepper-grass, Palmate-bracted Bird's Beak, San Joaquin Spearscale, Solano Grass

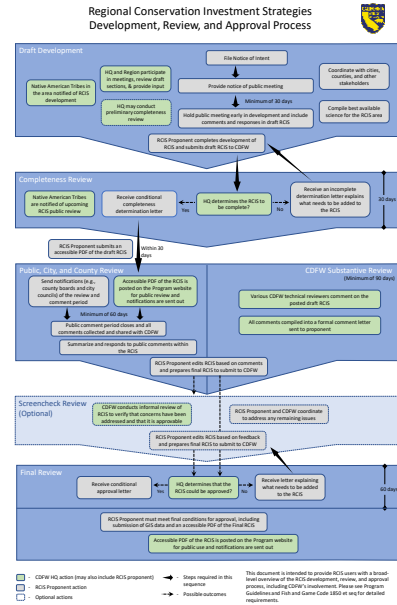
[RCIS Interactive Map](#)

Slide includes usable hyperlink to the RCIS Interactive Map. By clicking on a polygon on the map, the right side of the web page will provide a summary of information about that RCIS, including which species and biological resources are discussed in the RCIS. Links to the full RCIS document(s) are included at the top (see “Chapters (pdf): Document” and “Appendices (pdf): Document” in this example)

RCIS Requirements

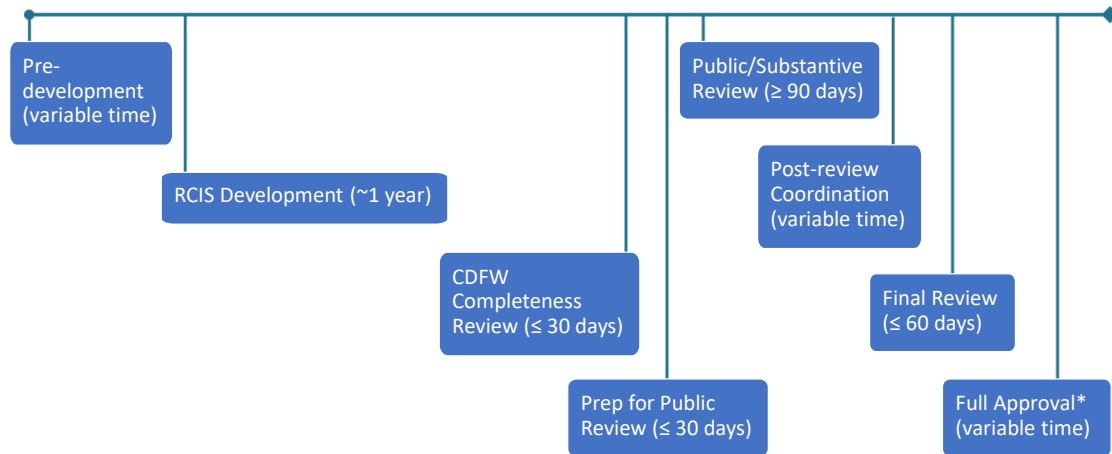
[Fish & Game Code 1850-1860 & RCIS Program Guidelines](#) (Section 4)

- Required document content
- Interested parties involvement
- Public meeting
- Public review period
- CDFW review



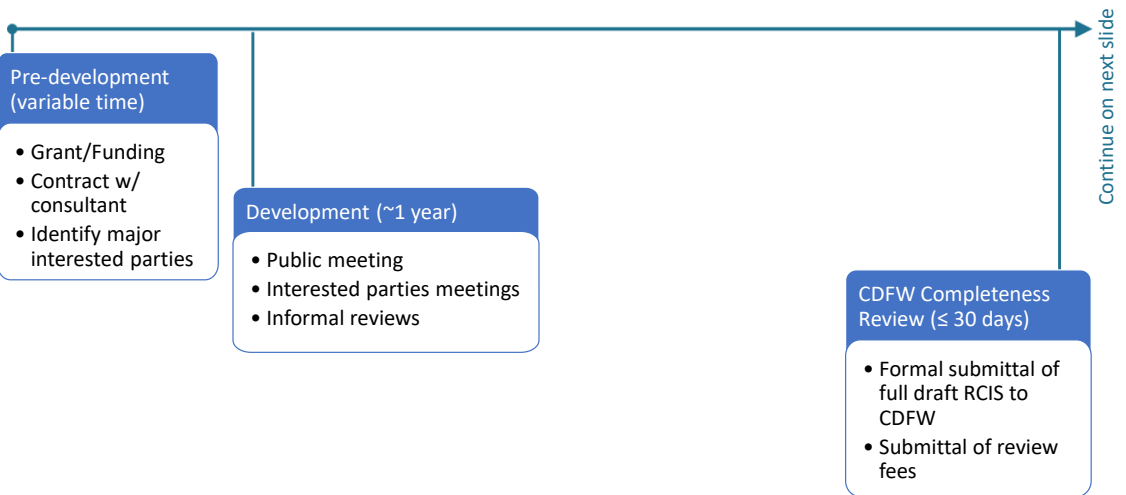
The RCIS program is based in law (Fish & Game Code 1850-1860; slide includes useable hyperlink) and includes RCIS Program Guidelines (slide includes useable hyperlink) that have the force of regulation. Therefore, development of an RCIS has specific requirements for document content as well as process steps. The flowchart summarizes the entire process for RCIS development, review, and approval. A readable version of this flowchart is available in Section 4.5 of the RCIS Program Guidelines.

RCIS Development Timeline (2~3 years)



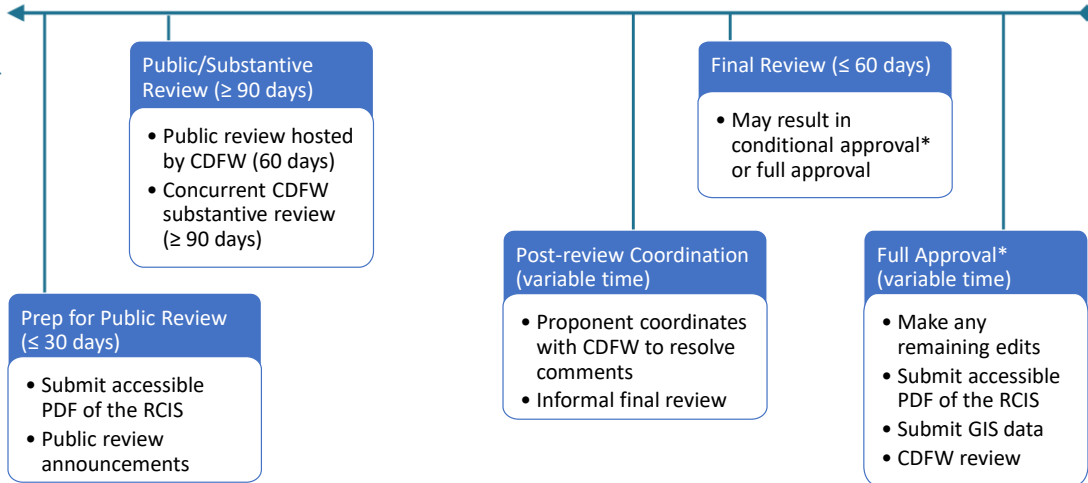
This figure depicts approximate timeline for the RCIS development, review, and approval timeline, which is typically 2 to 3 years. The figure includes various phases in the timeline. The next two slides include example tasks that occur in each of these phases. Further about the phases and tasks can be found in Section 4.5 of the RCIS Program Guidelines.

RCIS Development Timeline (2~3 years)



RCIS Development Timeline (2~3 years)

Continue on prior slide



Wildlife Conservation Board Funding for RCISs

- \$1.6 million for RCIS development
- New Prop 4 funding for development or implementation
- Other grant funds may be used for implementation

wcb.ca.gov/Grants

For RCIS development funding contact:
Shannon Lucas
WCB Restoration Supervisor
Shannon.Lucas@wildlife.ca.gov



Several pots of money are available through the Wildlife Conservation Board for RCIS development and/or implementation. Information about applying for WCB grant funding is available on their web page (usable hyperlink included). If you are interested specifically in RCIS development funding, you may contact Shannon Lucas for more information.

For Further RCIS Program Information

FOLLOW-UP VIRTUAL Q&A SESSION

Dates, times, and registration info included in RCIS Info Letter

RCIS Subprogram Contacts:

Ami Olson, RCIS Coordinator

Karen Weiss, Environmental Program
Manager

MCA Subprogram Contacts:

Brandon Amrhein, MCA Coordinator

Suzanne Gilmore, Sr. ES, Supervisor

Email us at: rcis@wildlife.ca.gov

Slide Deck: <https://nrm.dfg.ca.gov/FileHandler.ashx?DocumentID=227225>

Web page: www.wildlife.ca.gov/Conservation/Planning/Regional-Conservation
(and to join the RCIS Program Notifications List)