



# *California Offshore Wind Port Development*



Schatz Energy Research Center

***December 11, 2024***

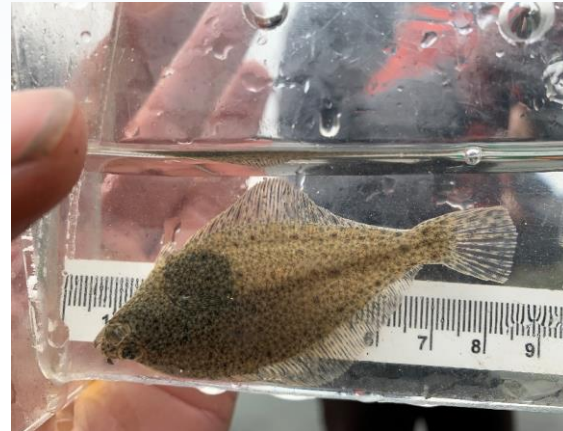
***California Fish and Game Commission  
Presentation on the Humboldt Bay Offshore Wind Heavy Lift  
Marine Terminal Project***

***Corianna Flannery  
Senior Environmental Scientist (Supervisor)  
Marine Region Statewide Offshore Renewable Energy Project***



# CDFW Trustee Agency Role

- Trustee agency with jurisdiction over conservation, protection, and management of wildlife, native plants, and the habitat necessary to maintain biologically sustainable populations.
- Provide biological expertise during public environmental review efforts (CEQA, NEPA) on impacts to biological resources & mitigation measures.
- Inter-agency coordination & participation in working groups.





# CDFW Responsible Agency Role

- Regulatory authority under the CA Endangered Species Act (CESA)
  - 2081(b) CESA Incidental Take Permit
  - 2081(a) CESA MOU





# Incidental Take Permits (ITP)

## When is an ITP recommended?

- Take of a California threatened or endangered species from project activities
  - e.g., pile driving, suction dredging

## CDFW can authorize take and issue an ITP if:

- The take is incidental to an otherwise lawful activity,
- The impacts of the authorized take are minimized and fully mitigated,
- The applicant has ensured adequate funding for the minimization and mitigation measures to be adopted,
- The take will not jeopardize the continued existence of the species.





# Scientific Collecting Permits (SCPs) & CESA MOUs

## When is an SCP required?

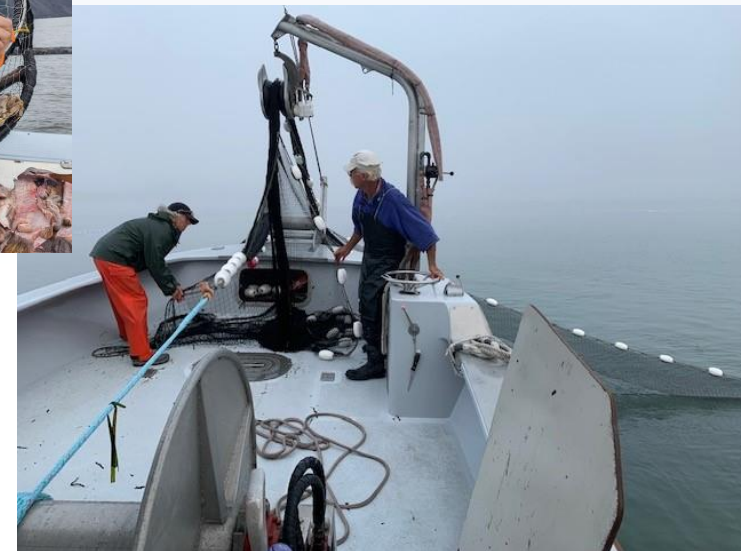
- When scientific research will result in “take” of wildlife
  - e.g., baseline biological studies, eelgrass mitigation
  - SCP and CESA MOU required if scientific research will result in "take" of state-listed species





# Management of State Fisheries

- Responsible for sustainable management of fishery resources within state waters
- Potential impacts from port development to commercial and recreational fisheries:
  - Vessel safety
  - Port usage/access
  - Loss of fishing grounds
  - Direct impacts to species targeted





# CDFW Aquaculture Program

## CDFW's role in managing & regulating aquaculture:

- Annual registration of all commercial aquaculture operations (inland and coastal)
- Oversight governing the collection of wild specimens to start or enhance commercial farm breeding stocks
- Importation regulation
- Fish and shellfish health management
  - Aquaculture Disease Committee



## Potential Impacts to aquaculture industry:

- Increased vessel traffic, ballast/bilge water discharge, maintenance & decommissioning activities, dredging
  - Risk of introducing diseases and/or invasive species
  - Water quality impacts



Thank You

Contact:

**Corianna Flannery**

[Corianna.Flannery@wildlife.ca.gov](mailto:Corianna.Flannery@wildlife.ca.gov)

