



Northern California Fisheries Chart

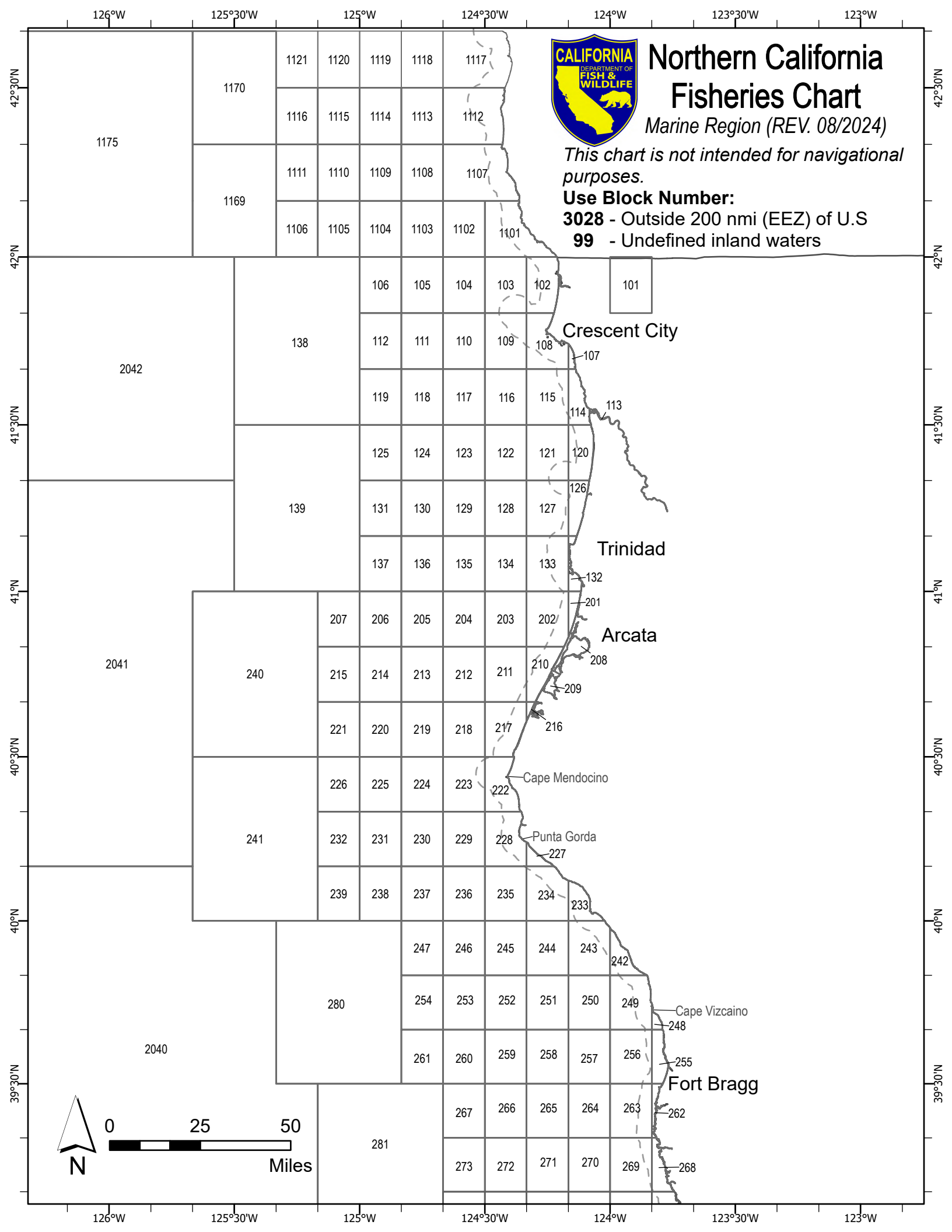
Marine Region (REV. 08/2024)

This chart is not intended for navigational purposes.

Use Block Number:

3028 - Outside 200 nmi (EEZ) of U.S

99 - Undefined inland waters



1170	1121	1120	1119	1118	1117
	1116	1115	1114	1113	1112
1169	1111	1110	1109	1108	1107
	1106	1105	1104	1103	1102

Crescent City

Trinidad

Arcata

Cape Mendocino

Punta Gorda

Cape Vizcaino

Fort Bragg

2042

2041

2040

138

139

240

241

280

281

101

106

105

104

103

102

112

111

110

109

108

119

118

117

116

115

125

124

123

122

121

131

130

129

128

127

137

136

135

134

133

207

206

205

204

203

202

215

214

213

212

211

221

220

219

218

217

226

225

224

223

232

231

230

229

239

238

237

236

235

247

246

245

244

243

254

253

252

251

250

261

260

259

258

257

267

266

265

264

263

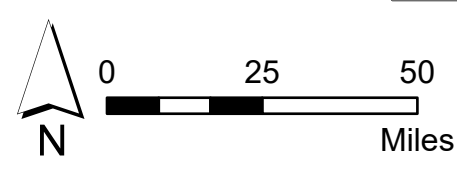
273

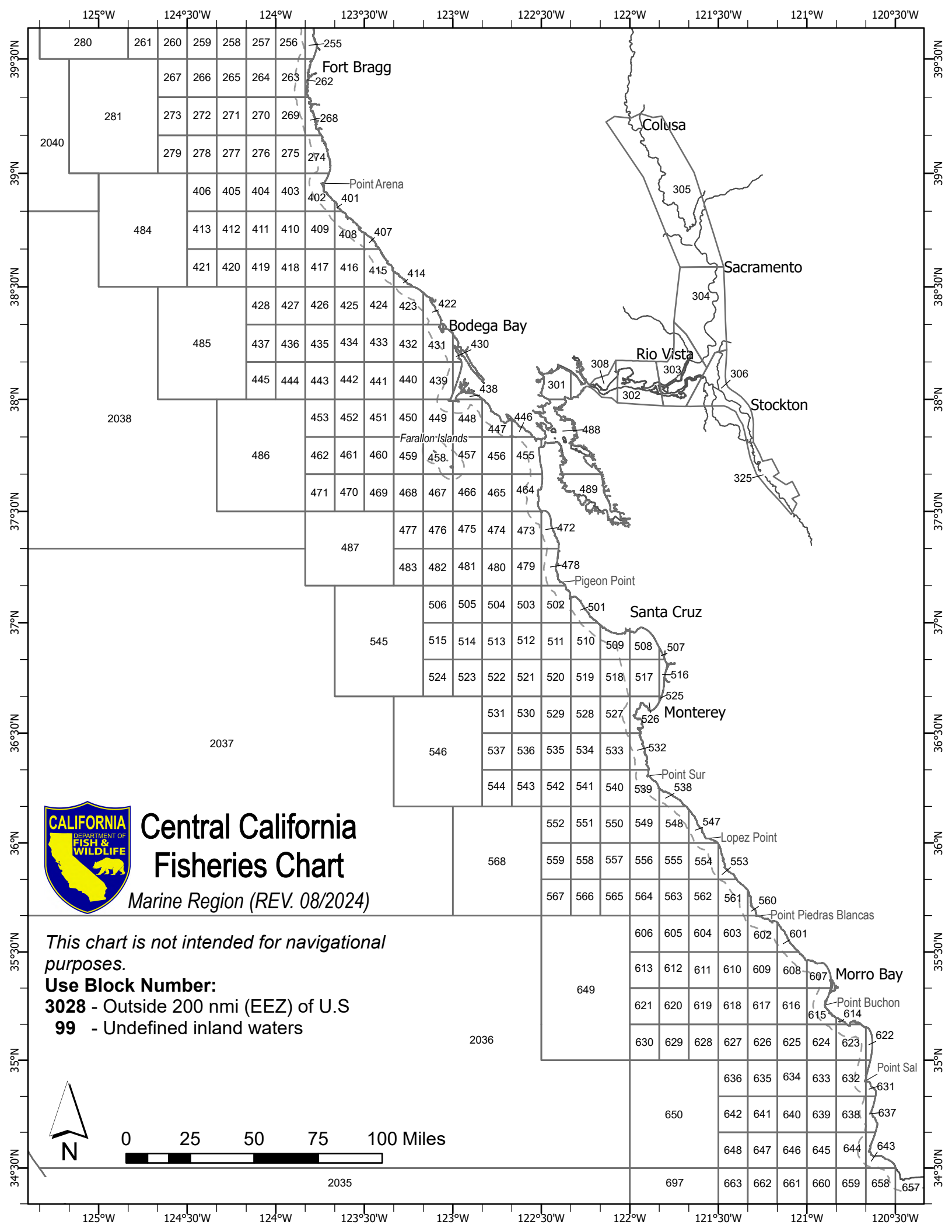
272

271

270

269





Central California Fisheries Chart

Marine Region (REV. 08/2024)

This chart is not intended for navigational purposes.

Use Block Number:

3028 - Outside 200 nmi (EEZ) of U.S

99 - Undefined inland waters





Southern California Fisheries Chart

Marine Region (REV. 08/2024)

This chart is not intended for navigational purposes.

Use Block Number:

3028 - Outside 200 nmi (EEZ) of U.S

3900 - Outside 200 nmi of Mexico

99 - Undefined inland waters

